

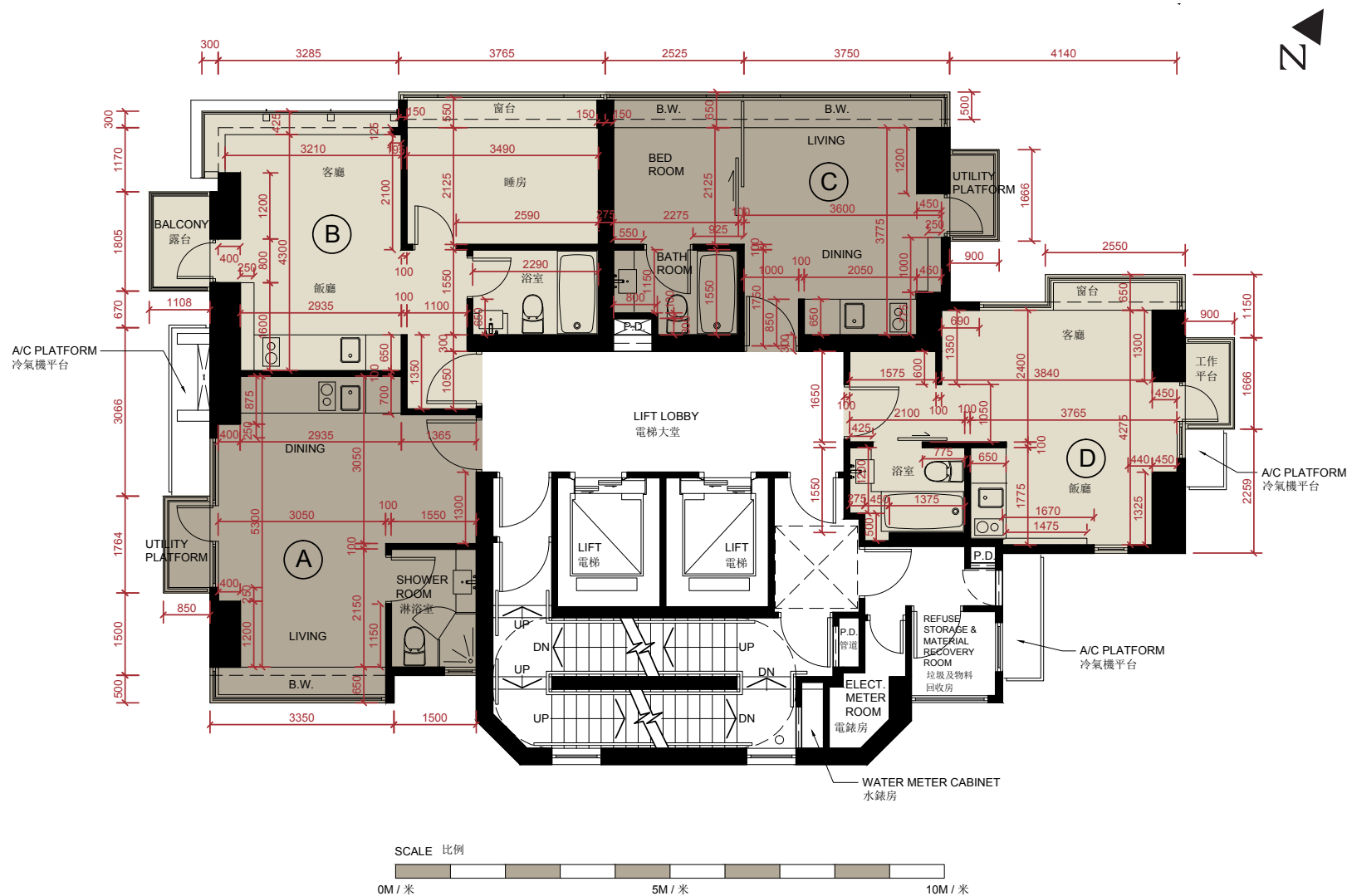


FLOOR PLANS
樓面平面圖

FLOOR PLANS OF RESIDENTIAL PROPERTIES IN THE DEVELOPMENT

發展項目的住宅物業的樓面平面圖

5/F TO 12/F, 15/F TO 18/F, 20/F TO 23/F, 25/F TO 33/F AND 35/F FLOOR PLAN 5樓至12樓、15樓至18樓、20樓至23樓、25樓至33樓及35樓樓面平面圖



The dimensions in floor plans are all structural dimensions in millimeter.
平面圖所列之數字為以毫米標示之建築結構尺寸。

Floor-to-floor height (i.e. the height between the top surface of the structural slab of a floor and the top surface of the structural slab of its immediate upper floor) of each residential property on 5/F to 12/F, 15/F to 18/F, 20/F to 23/F and 25/F to 33/F is 3.150m and 35/F is 3.5m.
5樓至12樓、15樓至18樓、20樓至23樓及25樓至33樓每個住宅單位的層與層之間的高度(指該樓層之石屎地台面與上一層之石屎地台面之高度距離)為3.150米，35樓住宅單位的層與層之間的高度為3.5米。

The thickness of the floor slabs (excluding plaster) of each residential property on 5/F to 12/F, 15/F to 18/F, 20/F to 23/F, 25/F to 33/F and 35/F is 150mm.
5樓至12樓、15樓至18樓、20樓至23樓、25樓至33樓及35樓每個住宅單位的樓板(不包括灰泥)的厚度為150毫米。

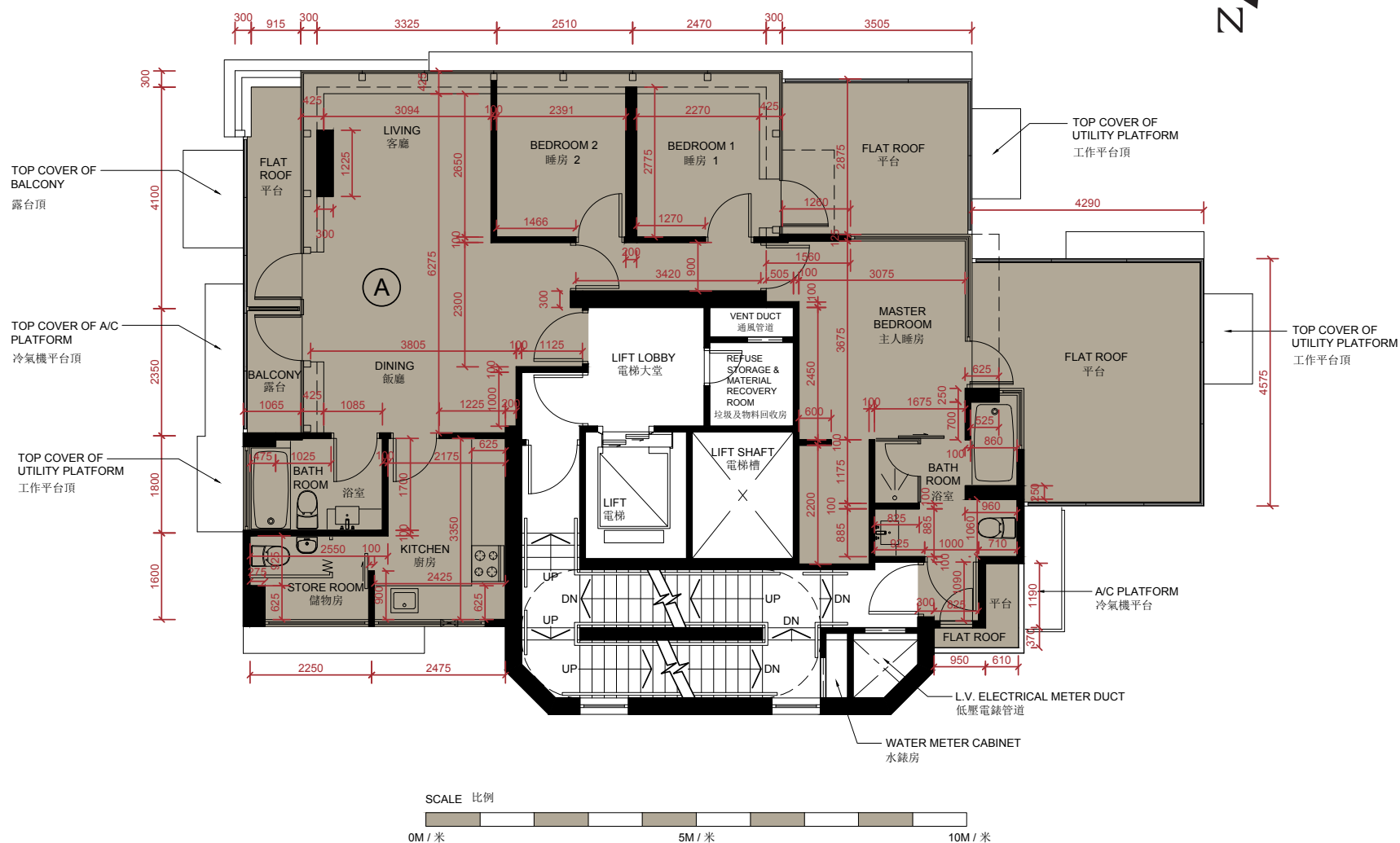
The internal areas of the residential properties on the upper floors will generally be slightly larger than those on the lower floors because of the reducing thickness of structural walls on the upper floors.
因住宅物業的較高樓層的結構牆的厚度遞減，較高樓層的內部面積，一般比較低樓層的內部面積稍大。

The external and internal dimensions, thickness of the internal partitions and external dimensions of individual compartments of each residential property as shown on the floor plan is derived from the information provided in the approved building plans for the Development.
平面圖中顯示之住宅物業的外部及內部尺寸、內部間隔的厚度及個別分隔室的外部尺寸乃根據發展項目經批准的建築圖則所顯示之資料計算出來。

A/C PLATFORM = AIR-CONDITIONER PLATFORM 冷氣機平台 BALCONY = 露台 BATHROOM = 浴室 BEDROOM = 睡房 B.W. = BAY WINDOW 窗台
DINING = DINING ROOM 飯廳 ELECT. METER ROOM = ELECTRICAL METER ROOM 電錶房 FLAT ROOF = 平台 LIFT = 電梯 LIFT LOBBY = 電梯大堂
LIVING = LIVING ROOM 客廳 P.D. = PIPE DUCT 管道 REFUSE STORAGE & MATERIAL RECOVERY ROOM = 垃圾及物料回收房 SHOWER ROOM = 淋浴室
WATER METER CABINET = 水錶房 UTILITY PLATFORM = 工作平台 UP = 向上 DN = 向下

36/F FLOOR PLAN

36樓樓面平面圖



The dimensions in floor plans are all structural dimensions in millimeter.
 平面圖所列之數字為以毫米標示之建築結構尺寸。

Floor-to-floor height (i.e. the height between the top surface of the structural slab of a floor and the top surface of the structural slab of its immediate upper floor) of each residential property on 36/F is 3.50m.

36樓每個住宅單位的層與層之間的高度(指該樓層之石屎地台面與上一層之石屎地台面之高度距離)為3.50米。

The thickness of the floor slabs (excluding plaster) of each residential property on 36/F is 150mm.

36樓每個住宅單位的樓板(不包括灰泥)的厚度為150毫米。

The internal areas of the residential properties on the upper floors will generally be slightly larger than those on the lower floors because of the reducing thickness of structural walls on the upper floors.

因住宅物業的較高樓層的結構牆的厚度遞減，較高樓層的內部面積，一般比較低樓層的內部面積稍大。

The external and internal dimensions, thickness of the internal partitions and external dimensions of individual compartments of each residential property as shown on the floor plan is derived from the information provided in the approved building plans for the Development.

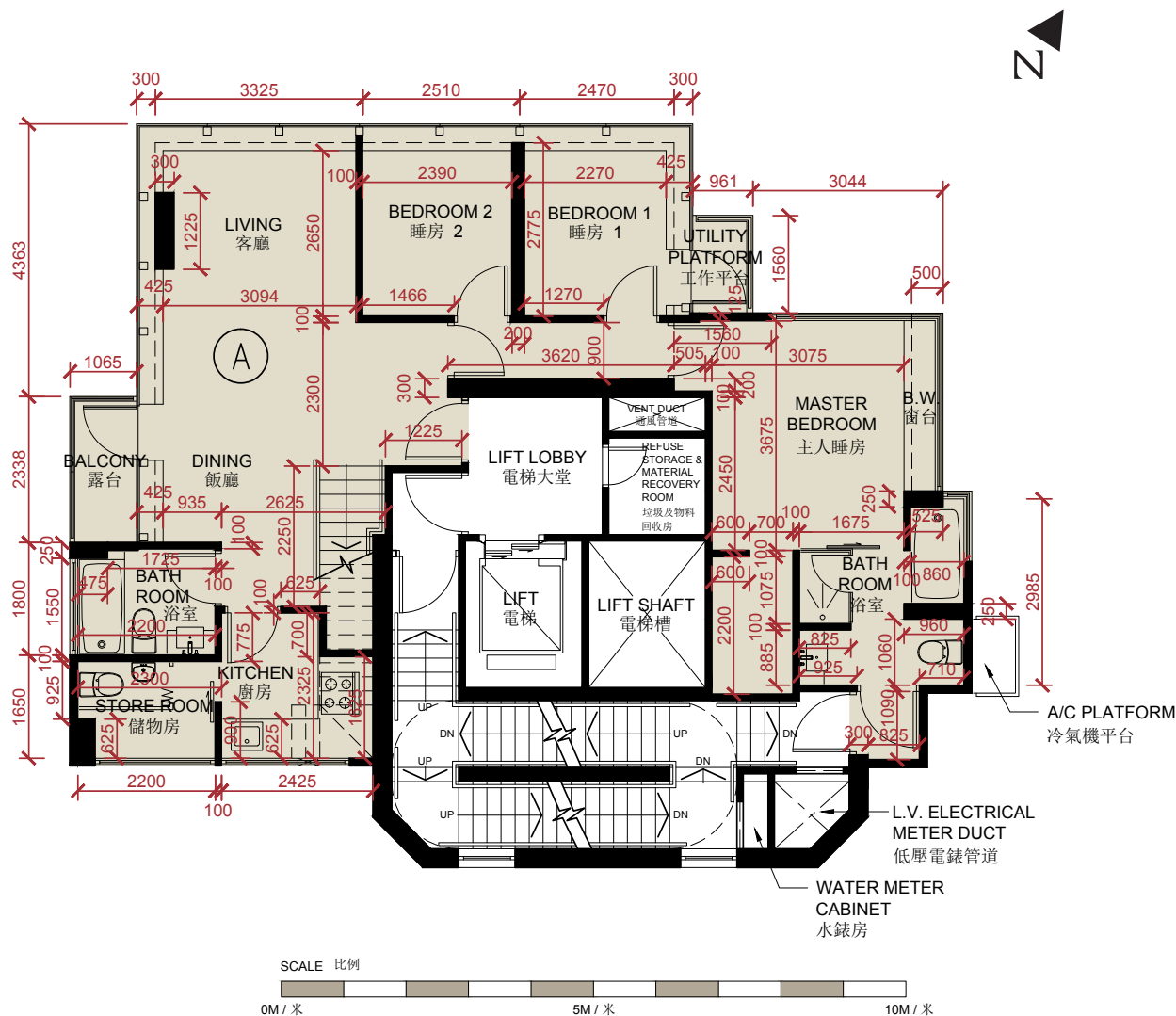
平面圖中顯示之住宅物業的外部及內部尺寸、內部間隔的厚度及個別分隔室的外部尺寸乃根據發展項目經批准的建築圖則所顯示之資料計算出來。

A/C PLATFORM = AIR-CONDITIONER PLATFORM 冷氣機平台 BALCONY = 露台 BATHROOM = 浴室 BEDROOM = 睡房 B.W. = BAY WINDOW 窗台
 DINING = DINING ROOM 飯廳 ELECT. METER ROOM = ELECTRICAL METER ROOM 電錶房 FLAT ROOF = 平台 KITCHEN = 廚房 LIFT = 電梯
 LIFT LOBBY = 電梯大堂 LIFT SHAFT = 電梯槽 LIVING = LIVING ROOM 客廳 L.V. ELECTRICAL METER DUCT = LOW VOLTAGE ELECTRICAL METER DUCT 低壓電錶管道
 REFUSE STORAGE & MATERIAL RECOVERY ROOM = 垃圾及物料回收房 SHOWER ROOM = 淋浴室 STORE ROOM = 儲物房
 WATER METER CABINET = 水錶房 UTILITY PLATFORM = 工作平台 UP = 向上 DN = 向下 VENT DUCT = 通風管道

FLOOR PLANS OF RESIDENTIAL PROPERTIES IN THE DEVELOPMENT

發展項目的住宅物業的樓面平面圖

37/F FLOOR PLAN 37樓樓面平面圖



The dimensions in floor plans are all structural dimensions in millimeter.
平面圖所列之數字為以毫米標示之建築結構尺寸。

Floor-to-floor height (i.e. the height between the top surface of the structural slab of a floor and the top surface of the structural slab of its immediate upper floor) of each residential property on 37/F is 3.5m.

37樓每個住宅單位的層與層之間的高度(指該樓層之石屎地台面與上一層之石屎地台面之高度距離)為3.5米。

The thickness of the floor slabs (excluding plaster) of each residential property on 37/F is 150mm & 200mm.

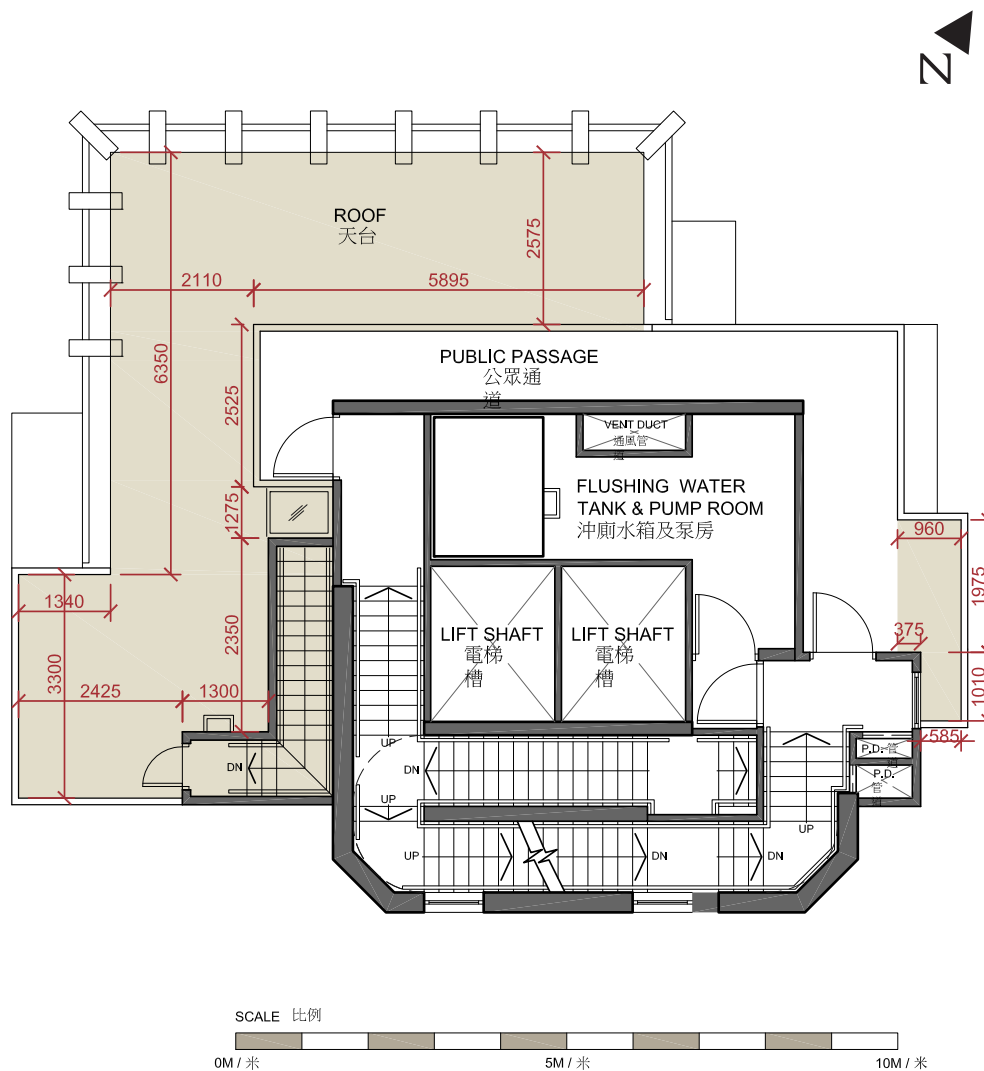
37樓每個住宅單位的樓板(不包括灰泥)的厚度為150毫米及200毫米。

The external and internal dimensions, thickness of the internal partitions and external dimensions of individual compartments of each residential property as shown on the floor plan is derived from the information provided in the approved building plans for the Development.

平面圖中顯示之住宅物業的外部及內部尺寸、內部間隔的厚度及個別分隔室的外部尺寸乃根據發展項目經批准的建築圖則所顯示之資料計算出來。

A/C PLATFORM = AIR-CONDITIONER PLATFORM 冷氣機平台 BALCONY = 露台 BATHROOM = 浴室 BEDROOM = 睡房 B.W. = BAY WINDOW 窗台
DINING = DINING ROOM 飯廳 ELECT. METER ROOM = ELECTRICAL METER ROOM 電錶房 FLAT ROOF = 平台 KITCHEN = 廚房 LIFT = 電梯
LIFT LOBBY = 電梯大堂 LIFT SHAFT = 電梯槽 LIVING = LIVING ROOM 客廳 L.V. ELECTRICAL METER DUCT = LOW VOLTAGE ELECTRICAL METER DUCT
低壓電錶管道 MASTER BEDROOM = 主人睡房 REFUSE STORAGE & MATERIAL RECOVERY ROOM = 垃圾及物料回收房 STORE ROOM = 儲物房
WATER METER CABINET = 水錶房 UTILITY PLATFORM = 工作平台 UP = 向上 DN = 向下 VENT DUCT = 通風管道

R/F ROOF PLAN 天台樓面平面圖



The dimensions in floor plans are all structural dimensions in millimeter.
平面圖所列之數字為以毫米標示之建築結構尺寸。

The thickness of the floor slabs (excluding plaster) of each residential property on R/F is 150mm.
天台每個住宅單位的樓板(不包括灰泥)的厚度為150毫米。

The external and internal dimensions, thickness of the internal partitions and external dimensions of individual compartments of each residential property as shown on the floor plan is derived from the information provided in the approved building plans for the Development.
平面圖中顯示之住宅物業的外部及內部尺寸、內部間隔的厚度及個別分隔室的外部尺寸乃根據發展項目經批准的建築圖則所顯示之資料計算出來。

LIFT SHAFT = 電梯槽 P.D. = PIPE DUCT 管道 POTABLE WATER & PUMP ROOM = 食水泵房 PUBLIC PASSAGE = 公眾通道 ROOF = 天台
WATER METER CABINET = 水錶房 UTILITY PLATFORM = 工作平台 UP = 向上 DN = 向下 VENT DUCT = 通風管道