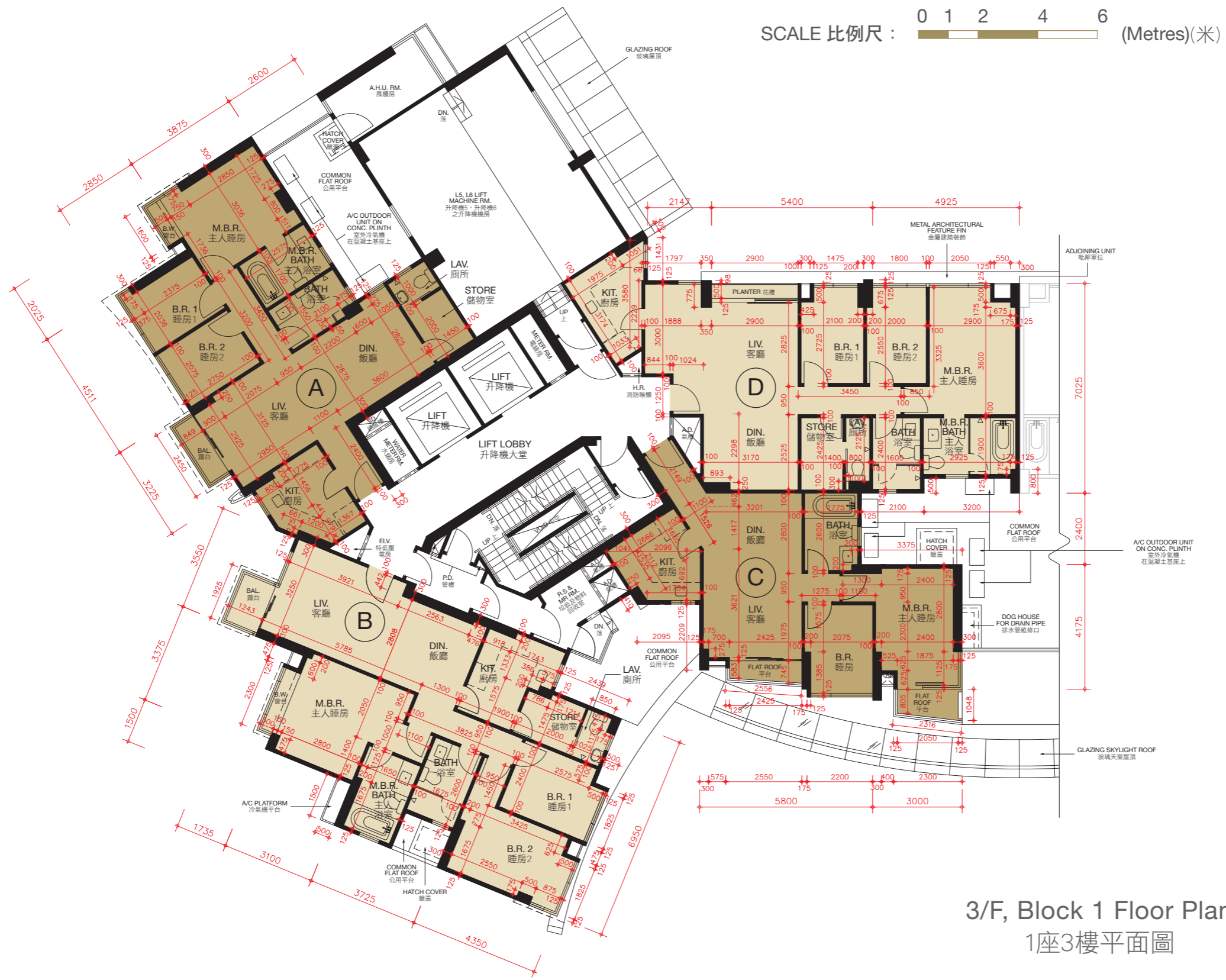


# FLOOR PLANS OF RESIDENTIAL PROPERTIES IN THE DEVELOPMENT

## 發展項目的住宅物業的樓面平面圖



3/F, Block 1 Floor Plan  
1座3樓平面圖

# FLOOR PLANS OF RESIDENTIAL PROPERTIES IN THE DEVELOPMENT

## 發展項目的住宅物業的樓面平面圖

The thickness of the floor slabs (excluding plaster) of each residential property on 3/F of Block 1 is 125mm, 150mm, 170mm and 200mm.

The floor-to-floor height of each residential property on 3/F of Block 1 is 3.15m.

The internal areas of the residential properties on the upper floors will generally be slightly larger than those on the lower floors because of the reducing thickness of the structural walls on the upper floors.

第1座3樓每個住宅物業的樓板(不包括灰泥)的厚度為125毫米、150毫米、170毫米及200毫米。

第1座3樓每個住宅物業的層與層之間的高度為3.15米。

因住宅物業的較高樓層的結構牆的厚度遞減，較高樓層的內部面積，一般比較低樓層的內部面積稍大。

### Abbreviation 縮寫

A/C PLATFORM = Air-conditioner Platform 冷氣機平台

A.D. = Air Duct 氣槽

A.H.U. RM. = Air Handling Unit Room 風櫃房

BAL. = Balcony 露台

BATH = Bathroom 浴室

B.R. = Bedroom 睡房

B.W. = Bay Window 窗台

DIN. = Dining Room 飯廳

DN. = Down 落

ELV. = Extra Low Voltage Room 特低壓電房

H.R. = Hose Reel 消防喉轆

KIT. = Kitchen 廚房

LAV. = Lavatory 廁所

LIV. = Living Room 客廳

L5, L6 LIFT MACHINE RM. = L5, L6 Lift Machine Room

升降機5，升降機6之升降機機房

M.B.R. = Master Bedroom 主人睡房

M.B.R. BATH = Master Bathroom 主人浴室

METER RM. = Meter Room 電錶房

A/C OUTDOOR UNIT ON CONC. PLINTH = Air-conditioner

Outdoor unit on Concrete Plinth 室外冷氣機在混凝土基座上

P.D. = Pipe Duct 管槽

RS & MR RM. = Refuse Storage and Material Recovery Room

垃圾及物料回收室

STORE = Store Room 儲物室

V.D. = Ventilation Duct 通風槽

WATER METER RM. = Water Meter Room 水錶房

Remarks:

The dimensions in floor plans are all structural dimensions in millimetre.

備註:

平面圖所列之數字為以毫米標示之建築結構呎吋。

# FLOOR PLANS OF RESIDENTIAL PROPERTIES IN THE DEVELOPMENT

## 發展項目的住宅物業的樓面平面圖



# FLOOR PLANS OF RESIDENTIAL PROPERTIES IN THE DEVELOPMENT

## 發展項目的住宅物業的樓面平面圖

The thickness of the floor slabs (excluding plaster) of each residential property on 5/F-7/F of Block 1 is 125mm, 150mm, 170mm and 200mm.

The floor-to-floor height of each residential property on 5/F-7/F of Block 1 is 3.00m.

The internal areas of the residential properties on the upper floors will generally be slightly larger than those on the lower floors because of the reducing thickness of the structural walls on the upper floors.

第1座5樓至7樓每個住宅物業的樓板(不包括灰泥)的厚度為125毫米、150毫米、170毫米及200毫米。

第1座5樓至7樓每個住宅物業的層與層之間的高度為3.00米。

因住宅物業的較高樓層的結構牆的厚度遞減，較高樓層的內部面積，一般比較低樓層的內部面積稍大。

### Abbreviation 縮寫

A/C PLATFORM = Air-conditioner Platform 冷氣機平台

A.D. = Air Duct 氣槽

BAL. = Balcony 露台

BATH = Bathroom 浴室

B.R. = Bedroom 睡房

B.W. = Bay Window 窗台

DIN. = Dining Room 飯廳

DN. = Down 落

ELV. = Extra Low Voltage Room 特低壓電房

H.R. = Hose Reel 消防喉轆

KIT. = Kitchen 廚房

LAV. = Lavatory 廁所

LIV. = Living Room 客廳

M.B.R. = Master Bedroom 主人睡房

M.B.R. BATH = Master Bathroom 主人浴室

METER RM. = Meter Room 電錶房

P.D. = Pipe Duct 管槽

RS & MR RM. = Refuse Storage and Material Recovery Room  
垃圾及物料回收室

STORE = Store Room 儲物室

V.D. = Ventilation Duct 通風槽

WATER METER RM. = Water Meter Room 水錶房

Remarks:

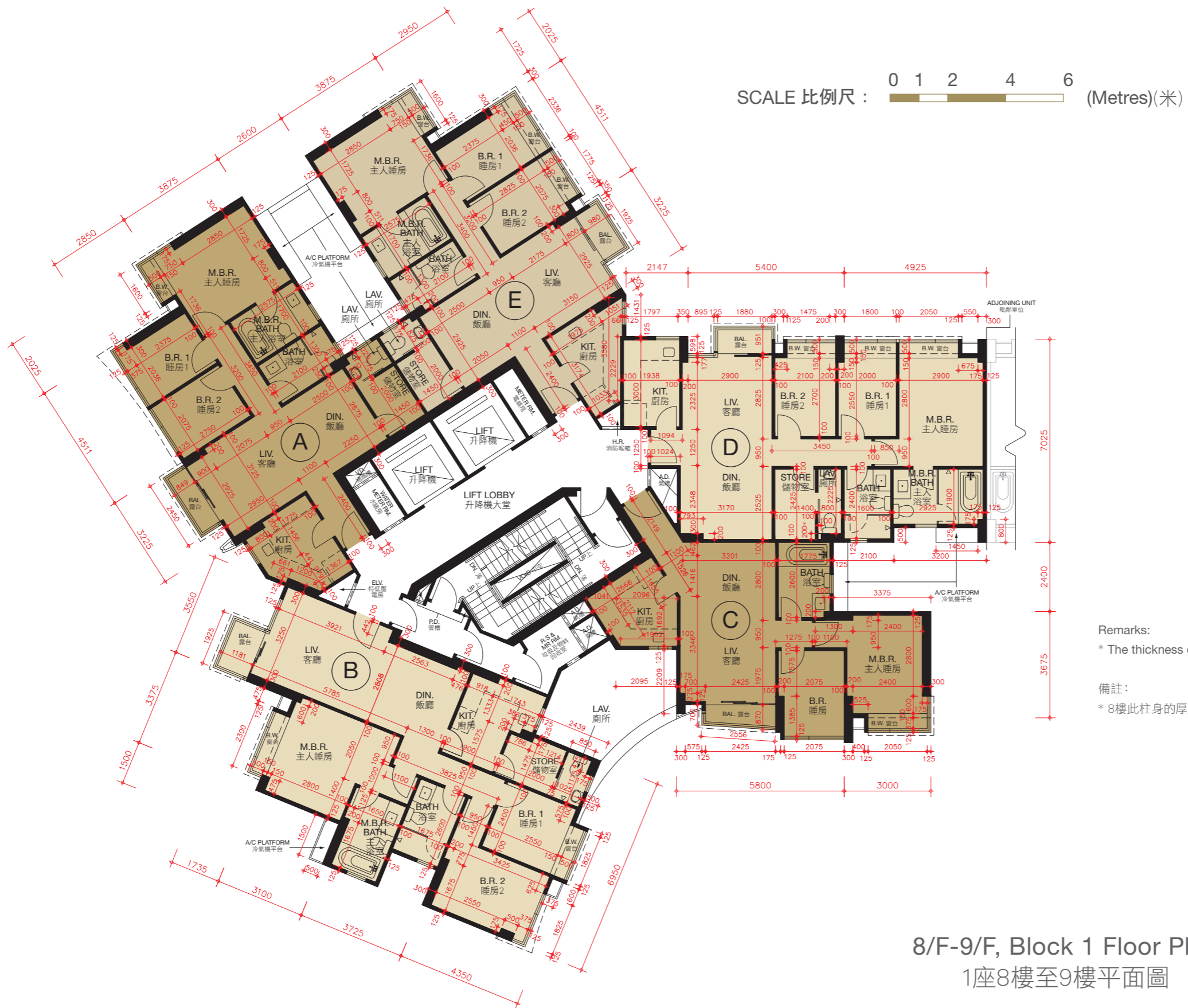
The dimensions in floor plans are all structural dimensions in millimetre.

備註:

平面圖所列之數字為以毫米標示之建築結構呎吋。

# FLOOR PLANS OF RESIDENTIAL PROPERTIES IN THE DEVELOPMENT

## 發展項目的住宅物業的樓面平面圖



8/F-9/F, Block 1 Floor Plan  
1座8樓至9樓平面圖

# FLOOR PLANS OF RESIDENTIAL PROPERTIES IN THE DEVELOPMENT

## 發展項目的住宅物業的樓面平面圖

The thickness of the floor slabs (excluding plaster) of each residential property on 8/F-9/F of Block 1 is 125mm, 150mm, 170mm and 200mm.

The floor-to-floor height of each residential property on 8/F-9/F of Block 1 is 3.00m.

The internal areas of the residential properties on the upper floors will generally be slightly larger than those on the lower floors because of the reducing thickness of the structural walls on the upper floors.

第1座8樓至9樓每個住宅物業的樓板(不包括灰泥)的厚度為125毫米、150毫米、170毫米及200毫米。

第1座8樓至9樓每個住宅物業的層與層之間的高度為3.00米。

因住宅物業的較高樓層的結構牆的厚度遞減，較高樓層的內部面積，一般比較低樓層的內部面積稍大。

### Abbreviation 縮寫

A/C PLATFORM = Air-conditioner Platform 冷氣機平台

A.D. = Air Duct 氣槽

BAL. = Balcony 露台

BATH = Bathroom 浴室

B.R. = Bedroom 睡房

B.W. = Bay Window 窗台

DIN. = Dining Room 飯廳

DN. = Down 落

ELV. = Extra Low Voltage Room 特低壓電房

H.R. = Hose Reel 消防喉轆

KIT. = Kitchen 廚房

LAV. = Lavatory 廁所

LIV. = Living Room 客廳

M.B.R. = Master Bedroom 主人睡房

M.B.R. BATH = Master Bathroom 主人浴室

METER RM. = Meter Room 電錶房

P.D. = Pipe Duct 管槽

RS & MR RM. = Refuse Storage and Material Recovery Room  
垃圾及物料回收室

STORE = Store Room 儲物室

V.D. = Ventilation Duct 通風槽

WATER METER RM. = Water Meter Room 水錶房

Remarks:

The dimensions in floor plans are all structural dimensions in millimetre.

備註:

平面圖所列之數字為以毫米標示之建築結構呎吋。

# FLOOR PLANS OF RESIDENTIAL PROPERTIES IN THE DEVELOPMENT

## 發展項目的住宅物業的樓面平面圖



# FLOOR PLANS OF RESIDENTIAL PROPERTIES IN THE DEVELOPMENT

## 發展項目的住宅物業的樓面平面圖

The thickness of the floor slabs (excluding plaster) of each residential property on 10/F-17/F of Block 1 is 125mm, 150mm, 170mm and 200mm.

The floor-to-floor height of each residential property on 10/F-12/F & 15/F-16/F of Block 1 is 3.00m. The floor-to-floor height of Flat A, B, D and E on 17/F of Block 1 is 3.15m; the floor-to-floor height of Flat C on 17/F of Block 1 is 2.875m and 3.15m.

The internal areas of the residential properties on the upper floors will generally be slightly larger than those on the lower floors because of the reducing thickness of the structural walls on the upper floors.

第1座10樓至17樓每個住宅物業的樓板(不包括灰泥)的厚度為125毫米、150毫米、170毫米及200毫米。

第1座10樓至12樓及15樓至16樓每個住宅物業的層與層之間的高度為3.00米。第1座17樓A, B, D及E室的層與層之間的高度為3.15米;第1座17樓C室的層與層之間的高度為2.875米及3.15米。

因住宅物業的較高樓層的結構牆的厚度遞減,較高樓層的內部面積,一般比較低樓層的內部面積稍大。

### Abbreviation 縮寫

A/C PLATFORM = Air-conditioner Platform 冷氣機平台

A.D. = Air Duct 氣槽

BAL. = Balcony 露台

BATH = Bathroom 浴室

B.R. = Bedroom 睡房

B.W. = Bay Window 窗台

DIN. = Dining Room 飯廳

DN. = Down 落

ELV. = Extra Low Voltage Room 特低壓電房

H.R. = Hose Reel 消防喉轆

KIT. = Kitchen 廚房

LAV. = Lavatory 廁所

LIV. = Living Room 客廳

M.B.R. = Master Bedroom 主人睡房

M.B.R. BATH = Master Bathroom 主人浴室

METER RM. = Meter Room 電錶房

P.D. = Pipe Duct 管槽

RS & MR RM. = Refuse Storage and Material Recovery Room  
垃圾及物料回收室

STORE = Store Room 儲物室

V.D. = Ventilation Duct 通風槽

WATER METER RM. = Water Meter Room 水錶房

Remarks:

The dimensions in floor plans are all structural dimensions in millimetre.

備註:

平面圖所列之數字為以毫米標示之建築結構呎吋。



# FLOOR PLANS OF RESIDENTIAL PROPERTIES IN THE DEVELOPMENT

## 發展項目的住宅物業的樓面平面圖



# FLOOR PLANS OF RESIDENTIAL PROPERTIES IN THE DEVELOPMENT

## 發展項目的住宅物業的樓面平面圖

The thickness of the floor slabs (excluding plaster) of each residential property on 18/F of Block 1 is 125mm, 150mm and 170mm.

The floor-to-floor height of each residential property on 18/F of Block 1 is 2.875m and 3.15m.

The internal areas of the residential properties on the upper floors will generally be slightly larger than those on the lower floors because of the reducing thickness of the structural walls on the upper floors.

第1座18樓每個住宅物業的樓板(不包括灰泥)的厚度為125毫米、150毫米及170毫米。

第1座18樓每個住宅物業的層與層之間的高度為2.875米及3.15米。

因住宅物業的較高樓層的結構牆的厚度遞減，較高樓層的內部面積，一般比較低樓層的內部面積稍大。

### Abbreviation 縮寫

A/C PLATFORM = Air-conditioner Platform 冷氣機平台

A.D. = Air Duct 氣槽

BAL. = Balcony 露台

BATH = Bathroom 浴室

B.R. = Bedroom 睡房

B.W. = Bay Window 窗台

DIN. = Dining Room 飯廳

DN. = Down 落

ELV. = Extra Low Voltage Room 特低壓電房

H.R. = Hose Reel 消防喉轆

KIT. = Kitchen 廚房

LAV. = Lavatory 廁所

LIV. = Living Room 客廳

M.B.R. = Master Bedroom 主人睡房

M.B.R. BATH = Master Bathroom 主人浴室

METER RM. = Meter Room 電錶房

P.D. = Pipe Duct 管槽

RS & MR RM. = Refuse Storage and Material Recovery Room  
垃圾及物料回收室

STORE = Store Room 儲物室

V.D. = Ventilation Duct 通風槽

WATER METER RM. = Water Meter Room 水錶房

Remarks:

The dimensions in floor plans are all structural dimensions in millimetre.

備註:

平面圖所列之數字為以毫米標示之建築結構呎吋。

# FLOOR PLANS OF RESIDENTIAL PROPERTIES IN THE DEVELOPMENT

## 發展項目的住宅物業的樓面平面圖



# FLOOR PLANS OF RESIDENTIAL PROPERTIES IN THE DEVELOPMENT

## 發展項目的住宅物業的樓面平面圖

The thickness of the floor slabs (excluding plaster) of each residential property on 19/F of Block 1 is 150mm, 170mm and 175mm.

The floor-to-floor height of each residential property on 19/F of Block 1 is 3.15m.

The internal areas of the residential properties on the upper floors will generally be slightly larger than those on the lower floors because of the reducing thickness of the structural walls on the upper floors.

第1座19樓每個住宅物業的樓板(不包括灰泥)的厚度為150毫米、170毫米及175毫米。

第1座19樓每個住宅物業的層與層之間的高度為3.15米。

因住宅物業的較高樓層的結構牆的厚度遞減，較高樓層的內部面積，一般比較低樓層的內部面積稍大。

### Abbreviation 縮寫

A/C PLATFORM = Air-conditioner Platform 冷氣機平台

A/C = Air-conditioner 冷氣機

A.D. = Air Duct 氣槽

BAL. = Balcony 露台

BATH = Bathroom 浴室

B.R. = Bedroom 睡房

B.W. = Bay Window 窗台

DIN. = Dining Room 飯廳

DN. = Down 落

ELV. = Extra Low Voltage Room 特低壓電房

ELV. METER & CONTROL R.M. = Extra Low Voltage Meter and Control Room

特低壓電房及控制室

H.R. = Hose Reel 消防喉轆

KIT. = Kitchen 廚房

LAV. = Lavatory 廁所

LIV. = Living Room 客廳

M.B.R. = Master Bedroom 主人睡房

M.B.R. BATH = Master Bathroom 主人浴室

METER RM. = Meter Room 電錶房

P.D. = Pipe Duct 管槽

RS & MR RM. = Refuse Storage and Material Recovery Room

垃圾及物料回收室

STORE = Store Room 儲物室

V.D. = Ventilation Duct 通風槽

WATER METER RM. = Water Meter Room 水錶房

Remarks:

The dimensions in floor plans are all structural dimensions in millimetre.

備註:

平面圖所列之數字為以毫米標示之建築結構呎吋。

# FLOOR PLANS OF RESIDENTIAL PROPERTIES IN THE DEVELOPMENT

## 發展項目的住宅物業的樓面平面圖



\* This "Flat Roof" means the uppermost roof slab of the Development.

\* 這個「平台」指發展項目最高的天台樓板。

Roof, Block 1 Floor Plan  
1座天台平面圖

# FLOOR PLANS OF RESIDENTIAL PROPERTIES IN THE DEVELOPMENT

## 發展項目的住宅物業的樓面平面圖

---

The thickness of the floor slabs (excluding plaster) of each residential property on Roof Floor of Block 1: Not applicable.

The floor-to-floor height of each residential property on Roof Floor of Block 1: Not applicable.

The internal areas of the residential properties on the upper floors will generally be slightly larger than those on the lower floors because of the reducing thickness of the structural walls on the upper floors.

第1座天台每個住宅物業的樓板(不包括灰泥)的厚度: 不適用。

第1座天台每個住宅物業的層與層之間的高度: 不適用。

因住宅物業的較高樓層的結構牆的厚度遞減, 較高樓層的內部面積, 一般比較低樓層的內部面積稍大。

### Abbreviation 縮寫

A/C = Air-conditioner 冷氣機

A.D. = Air Duct 氣槽

DN. = Down 落

P.D. = Pipe Duct 管槽

POTABLE WATER TANK & PUMP RM. = Potable Water Tank and Pump Room 食水缸及泵房

Remarks:

The dimensions in floor plans are all structural dimensions in millimetre.

備註:

平面圖所列之數字為以毫米標示之建築結構呎吋。

# FLOOR PLANS OF RESIDENTIAL PROPERTIES IN THE DEVELOPMENT

## 發展項目的住宅物業的樓面平面圖

SCALE 比例尺: 0 1 2 4 6 (Metres)(米)



3/F, Block 2 Floor Plan  
2座3樓平面圖

# FLOOR PLANS OF RESIDENTIAL PROPERTIES IN THE DEVELOPMENT

## 發展項目的住宅物業的樓面平面圖

The thickness of the floor slabs (excluding plaster) of each residential property on 3/F of Block 2 is 125mm, 150mm, 170mm and 200mm.

The floor-to-floor height of each residential property on 3/F of Block 2 is 3.15m.

The internal areas of the residential properties on the upper floors will generally be slightly larger than those on the lower floors because of the reducing thickness of the structural walls on the upper floors.

第2座3樓每個住宅物業的樓板(不包括灰泥)的厚度為125毫米、150毫米、170毫米及200毫米。

第2座3樓每個住宅物業的層與層之間的高度為3.15米。

因住宅物業的較高樓層的結構牆的厚度遞減，較高樓層的內部面積，一般比較低樓層的內部面積稍大。

### Abbreviation 縮寫

A/C PLATFORM = Air-conditioner Platform 冷氣機平台

A.D. = Air Duct 氣槽

A.H.U. RM.= Air Handling Unit Room 風櫃房

BAL. = Balcony 露台

BATH = Bathroom 浴室

B.R. = Bedroom 睡房

B.W. = Bay Window 窗台

DIN. = Dining Room 飯廳

DN. = Down 落

ELV. = Extra Low Voltage Room 特低壓電房

H.R. = Hose Reel 消防喉轆

KIT. = Kitchen 廚房

LAV. = Lavatory 廁所

LIV. = Living Room 客廳

L5, L6 LIFT MACHINE RM. = L5, L6 Lift Machine Room

升降機5，升降機6之升降機機房

M.B.R. = Master Bedroom 主人睡房

M.B.R. BATH = Master Bathroom 主人浴室

METER RM. = Meter Room 電錶房

A/C OUTDOOR UNIT ON CONC. PLINTH = Air-conditioner Outdoor unit on Concrete Plinth 室外冷氣機在混凝土基座上

P.D. = Pipe Duct 管槽

RS & MR RM. = Refuse Storage and Material Recovery Room 垃圾及物料回收室

STORE = Store Room 儲物室

V.D. = Ventilation Duct 通風槽

WATER METER RM. = Water Meter Room 水錶房

Remarks:

The dimensions in floor plans are all structural dimensions in millimetre.

備註：

平面圖所列之數字為以毫米標示之建築結構呎吋。



# FLOOR PLANS OF RESIDENTIAL PROPERTIES IN THE DEVELOPMENT

## 發展項目的住宅物業的樓面平面圖

SCALE 比例尺: 0 1 2 4 6 (Metres)(米)



5/F, Block 2 Floor Plan  
2座5樓平面圖

# FLOOR PLANS OF RESIDENTIAL PROPERTIES IN THE DEVELOPMENT

## 發展項目的住宅物業的樓面平面圖

The thickness of the floor slabs (excluding plaster) of each residential property on 5/F of Block 2 is 125mm, 150mm, 170mm and 200mm.

The floor-to-floor height of each residential property on 5/F of Block 2 is 3.00m.

The internal areas of the residential properties on the upper floors will generally be slightly larger than those on the lower floors because of the reducing thickness of the structural walls on the upper floors.

第2座5樓每個住宅物業的樓板(不包括灰泥)的厚度為125毫米、150毫米、170毫米及200毫米。

第2座5樓每個住宅物業的層與層之間的高度為3.00米。

因住宅物業的較高樓層的結構牆的厚度遞減，較高樓層的內部面積，一般比較低樓層的內部面積稍大。

### Abbreviation 縮寫

A/C PLATFORM = Air-conditioner Platform 冷氣機平台

A.D. = Air Duct 氣槽

BAL. = Balcony 露台

BATH = Bathroom 浴室

B.R. = Bedroom 睡房

B.W. = Bay Window 窗台

DIN. = Dining Room 飯廳

DN. = Down 落

ELV. = Extra Low Voltage Room 特低壓電房

H.R. = Hose Reel 消防喉轆

KIT. = Kitchen 廚房

LAV. = Lavatory 廁所

LIV. = Living Room 客廳

M.B.R. = Master Bedroom 主人睡房

M.B.R. BATH = Master Bathroom 主人浴室

METER RM. = Meter Room 電錶房

P.D. = Pipe Duct 管槽

RS & MR RM. = Refuse Storage and Material Recovery Room  
垃圾及物料回收室

STORE = Store Room 儲物室

V.D. = Ventilation Duct 通風槽

WATER METER RM. = Water Meter Room 水錶房

Remarks:

The dimensions in floor plans are all structural dimensions in millimetre.

備註:

平面圖所列之數字為以毫米標示之建築結構呎吋。

# FLOOR PLANS OF RESIDENTIAL PROPERTIES IN THE DEVELOPMENT

## 發展項目的住宅物業的樓面平面圖

SCALE 比例尺 :  (Metres)(米)



6/F-7/F, Block 2 Floor Plan  
2座6樓至7樓平面圖

# FLOOR PLANS OF RESIDENTIAL PROPERTIES IN THE DEVELOPMENT

## 發展項目的住宅物業的樓面平面圖

The thickness of the floor slabs (excluding plaster) of each residential property on 6/F-7/F of Block 2 is 125mm, 150mm, 170mm and 200mm.

The floor-to-floor height of each residential property on 6/F-7/F of Block 2 is 3.00m.

The internal areas of the residential properties on the upper floors will generally be slightly larger than those on the lower floors because of the reducing thickness of the structural walls on the upper floors.

第2座6樓至7樓每個住宅物業的樓板(不包括灰泥)的厚度為125毫米、150毫米、170毫米及200毫米。

第2座6樓至7樓每個住宅物業的層與層之間的高度為3.00米。

因住宅物業的較高樓層的結構牆的厚度遞減，較高樓層的內部面積，一般比較低樓層的內部面積稍大。

### Abbreviation 縮寫

A/C PLATFORM = Air-conditioner Platform 冷氣機平台

A.D. = Air Duct 氣槽

BAL. = Balcony 露台

BATH = Bathroom 浴室

B.R. = Bedroom 睡房

B.W. = Bay Window 窗台

DIN. = Dining Room 飯廳

DN. = Down 落

ELV. = Extra Low Voltage Room 特低壓電房

H.R. = Hose Reel 消防喉轆

KIT. = Kitchen 廚房

LAV. = Lavatory 廁所

LIV. = Living Room 客廳

M.B.R. = Master Bedroom 主人睡房

M.B.R. BATH = Master Bathroom 主人浴室

METER RM. = Meter Room 電錶房

P.D. = Pipe Duct 管槽

RS & MR RM. = Refuse Storage and Material Recovery Room  
垃圾及物料回收室

STORE = Store Room 儲物室

V.D. = Ventilation Duct 通風槽

WATER METER RM. = Water Meter Room 水錶房

Remarks:

The dimensions in floor plans are all structural dimensions in millimetre.

備註:

平面圖所列之數字為以毫米標示之建築結構呎吋。

# FLOOR PLANS OF RESIDENTIAL PROPERTIES IN THE DEVELOPMENT

## 發展項目的住宅物業的樓面平面圖

SCALE 比例尺:  (Metres)(米)



Remarks:

\* The thickness of this column on 8/F is 300mm.

備註:

\* 8樓此柱身的厚度為300毫米。



8/F-9/F, Block 2 Floor Plan  
2座8樓至9樓平面圖

# FLOOR PLANS OF RESIDENTIAL PROPERTIES IN THE DEVELOPMENT

## 發展項目的住宅物業的樓面平面圖

The thickness of the floor slabs (excluding plaster) of each residential property on 8/F-9/F of Block 2 is 125mm, 150mm, 170mm and 200mm.

The floor-to-floor height of each residential property on 8/F-9/F of Block 2 is 3.00m.

The internal areas of the residential properties on the upper floors will generally be slightly larger than those on the lower floors because of the reducing thickness of the structural walls on the upper floors.

第2座8樓至9樓每個住宅物業的樓板(不包括灰泥)的厚度為125毫米、150毫米、170毫米及200毫米。

第2座8樓至9樓每個住宅物業的層與層之間的高度為3.00米。

因住宅物業的較高樓層的結構牆的厚度遞減，較高樓層的內部面積，一般比較低樓層的內部面積稍大。

### Abbreviation 縮寫

A/C PLATFORM = Air-conditioner Platform 冷氣機平台

A.D. = Air Duct 氣槽

BAL. = Balcony 露台

BATH = Bathroom 浴室

B.R. = Bedroom 睡房

B.W. = Bay Window 窗台

DIN. = Dining Room 飯廳

DN. = Down 落

ELV. = Extra Low Voltage Room 特低壓電房

H.R. = Hose Reel 消防喉轆

KIT. = Kitchen 廚房

LAV. = Lavatory 廁所

LIV. = Living Room 客廳

M.B.R. = Master Bedroom 主人睡房

M.B.R. BATH = Master Bathroom 主人浴室

METER RM. = Meter Room 電錶房

P.D. = Pipe Duct 管槽

RS & MR RM. = Refuse Storage and Material Recovery Room  
垃圾及物料回收室

STORE = Store Room 儲物室

V.D. = Ventilation Duct 通風槽

WATER METER RM. = Water Meter Room 水錶房

Remarks:

The dimensions in floor plans are all structural dimensions in millimetre.

備註:

平面圖所列之數字為以毫米標示之建築結構呎吋。

# FLOOR PLANS OF RESIDENTIAL PROPERTIES IN THE DEVELOPMENT

## 發展項目的住宅物業的樓面平面圖

SCALE 比例尺 : 0 1 2 4 6 (Metres)(米)



10/F-17/F, Block 2 Floor Plan  
2座10樓至17樓平面圖

# FLOOR PLANS OF RESIDENTIAL PROPERTIES IN THE DEVELOPMENT

## 發展項目的住宅物業的樓面平面圖

The thickness of the floor slabs (excluding plaster) of each residential property on 10/F-17/F of Block 2 is 125mm, 150mm, 170mm and 200mm.

The floor-to-floor height of each residential property on 10/F-12/F and 15/F-16/F of Block 2 is 3.00m. The floor-to-floor height of Flat A, B, D and E on 17/F of Block 2 is 3.15; the floor-to-floor height of Flat C on 17/F of Block 2 is 2.875m and 3.15m.

The internal areas of the residential properties on the upper floors will generally be slightly larger than those on the lower floors because of the reducing thickness of the structural walls on the upper floors.

第2座10樓至17樓每個住宅物業的樓板(不包括灰泥)的厚度為125毫米、150毫米、170毫米及200毫米。

第2座10樓至12樓及15樓至16樓每個住宅物業的層與層之間的高度為3.00米。第2座17樓A, B, D 及E室的層與層之間的高度為3.15米;第2座17樓C室的層與層之間的高度為2.875米及3.15米。

因住宅物業的較高樓層的結構牆的厚度遞減,較高樓層的內部面積,一般比較低樓層的內部面積稍大。

### Abbreviation 縮寫

A/C PLATFORM = Air-conditioner Platform 冷氣機平台

A.D. = Air Duct 氣槽

BAL. = Balcony 露台

BATH = Bathroom 浴室

B.R. = Bedroom 睡房

B.W. = Bay Window 窗台

DIN. = Dining Room 飯廳

DN. = Down 落

ELV. = Extra Low Voltage Room 特低壓電房

H.R. = Hose Reel 消防喉轆

KIT. = Kitchen 廚房

LAV. = Lavatory 廁所

LIV. = Living Room 客廳

M.B.R. = Master Bedroom 主人睡房

M.B.R. BATH = Master Bathroom 主人浴室

METER RM. = Meter Room 電錶房

P.D. = Pipe Duct 管槽

RS & MR RM. = Refuse Storage and Material Recovery Room  
垃圾及物料回收室

STORE = Store Room 儲物室

V.D. = Ventilation Duct 通風槽

WATER METER RM. = Water Meter Room 水錶房

Remarks:

The dimensions in floor plans are all structural dimensions in millimetre.

備註:

平面圖所列之數字為以毫米標示之建築結構呎吋。



# FLOOR PLANS OF RESIDENTIAL PROPERTIES IN THE DEVELOPMENT

## 發展項目的住宅物業的樓面平面圖

SCALE 比例尺:  (Metres)(米)



18/F (Lower Duplex), Block 2 Floor Plan  
2座18樓(複式下層)平面圖

# FLOOR PLANS OF RESIDENTIAL PROPERTIES IN THE DEVELOPMENT

## 發展項目的住宅物業的樓面平面圖

The thickness of the floor slabs (excluding plaster) of each residential property on 18/F of Block 2 is 125mm, 150mm and 170mm.

The floor-to-floor height of each residential property on 18/F of Block 2 is 2.875m and 3.15m.

The internal areas of the residential properties on the upper floors will generally be slightly larger than those on the lower floors because of the reducing thickness of the structural walls on the upper floors.

第2座18樓每個住宅物業的樓板(不包括灰泥)的厚度為125毫米、150毫米及170毫米。

第2座18樓每個住宅物業的層與層之間的高度為2.875米及3.15米。

因住宅物業的較高樓層的結構牆的厚度遞減，較高樓層的內部面積，一般比較低樓層的內部面積稍大。

### Abbreviation 縮寫

A/C PLATFORM = Air-conditioner Platform 冷氣機平台

A.D. = Air Duct 氣槽

BAL. = Balcony 露台

BATH = Bathroom 浴室

B.R. = Bedroom 睡房

B.W. = Bay Window 窗台

DIN. = Dining Room 飯廳

DN. = Down 落

ELV. = Extra Low Voltage Room 特低壓電房

H.R. = Hose Reel 消防喉轆

KIT. = Kitchen 廚房

LAV. = Lavatory 廁所

LIV. = Living Room 客廳

M.B.R. = Master Bedroom 主人睡房

M.B.R. BATH = Master Bathroom 主人浴室

METER RM. = Meter Room 電錶房

P.D. = Pipe Duct 管槽

RS & MR RM. = Refuse Storage and Material Recovery Room  
垃圾及物料回收室

STORE = Store Room 儲物室

V.D. = Ventilation Duct 通風槽

WATER METER RM. = Water Meter Room 水錶房

Remarks:

The dimensions in floor plans are all structural dimensions in millimetre.

備註:

平面圖所列之數字為以毫米標示之建築結構呎吋。

# FLOOR PLANS OF RESIDENTIAL PROPERTIES IN THE DEVELOPMENT

## 發展項目的住宅物業的樓面平面圖

SCALE 比例尺 :  (Metres)(米)



19/F (Upper Duplex), Block 2 Floor Plan  
2座19樓(複式上層)平面圖

# FLOOR PLANS OF RESIDENTIAL PROPERTIES IN THE DEVELOPMENT

## 發展項目的住宅物業的樓面平面圖

The thickness of the floor slabs (excluding plaster) of each residential property on 19/F of Block 2 is 150mm, 170mm and 175mm.

The floor-to-floor height of each residential property on 19/F of Block 2 is 3.15m.

The internal areas of the residential properties on the upper floors will generally be slightly larger than those on the lower floors because of the reducing thickness of the structural walls on the upper floors.

第2座19樓每個住宅物業的樓板(不包括灰泥)的厚度為150毫米、170毫米及175毫米。

第2座19樓每個住宅物業的層與層之間的高度為3.15米。

因住宅物業的較高樓層的結構牆的厚度遞減，較高樓層的內部面積，一般比較低樓層的內部面積稍大。

### Abbreviation 縮寫

A/C PLATFORM = Air-conditioner Platform 冷氣機平台

A/C = Air-conditioner 冷氣機

A.D. = Air Duct 氣槽

BAL. = Balcony 露台

BATH = Bathroom 浴室

B.R. = Bedroom 睡房

B.W. = Bay Window 窗台

DIN. = Dining Room 飯廳

DN. = Down 落

ELV. METER & CONTROL R.M. = Extra Low Voltage Meter and Control Room 特低壓電房及控制室

H.R. = Hose Reel 消防喉轆

KIT. = Kitchen 廚房

LAV. = Lavatory 廁所

LIV. = Living Room 客廳

M.B.R. = Master Bedroom 主人睡房

M.B.R. BATH = Master Bathroom 主人浴室

METER RM. = Meter Room 電錶房

P.D. = Pipe Duct 管槽

RS & MR RM. = Refuse Storage and Material Recovery Room  
垃圾及物料回收室

STORE = Store Room 儲物室

V.D. = Ventilation Duct 通風槽

WATER METER RM. = Water Meter Room 水錶房

Remarks:

The dimensions in floor plans are all structural dimensions in millimetre.

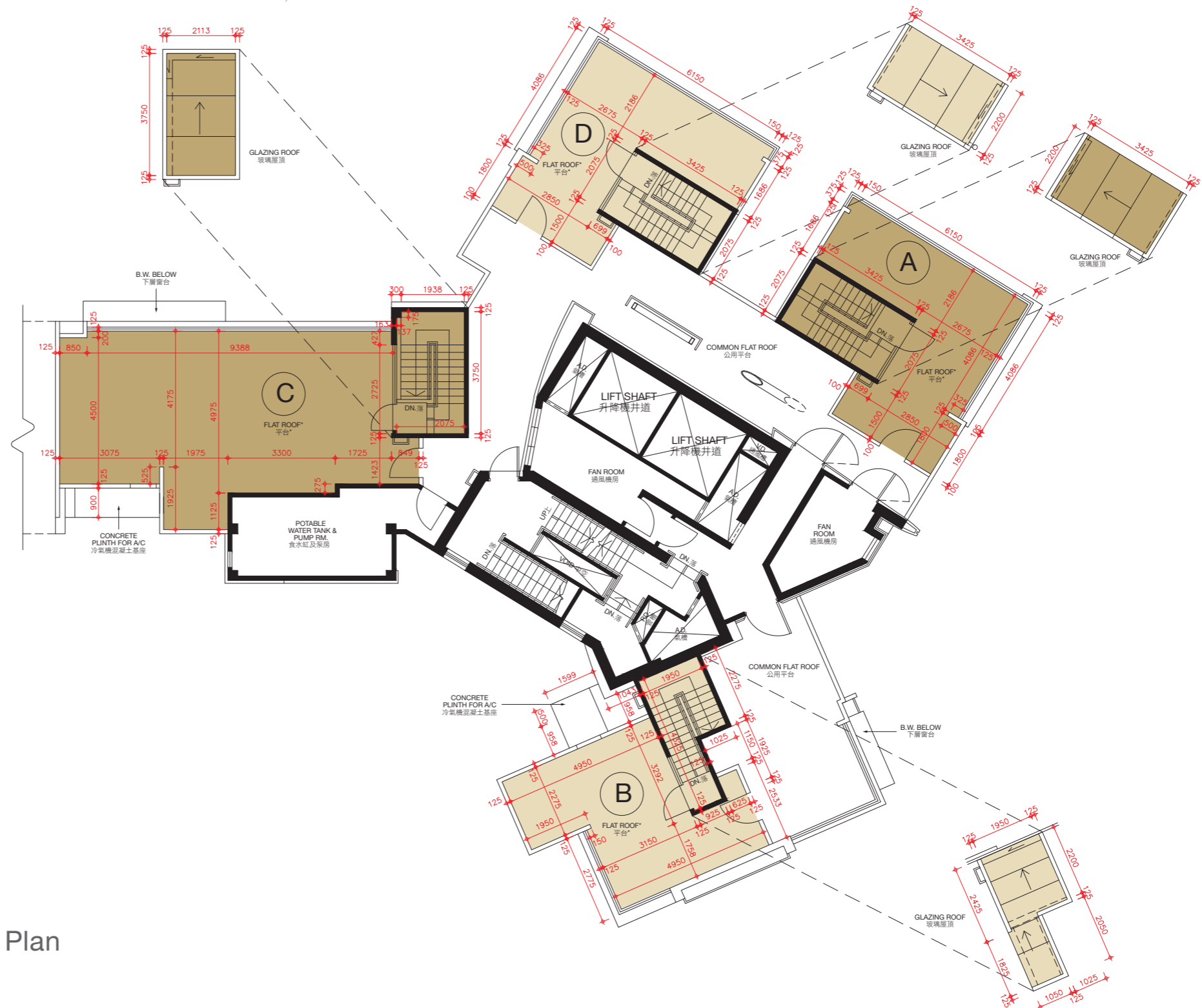
備註：

平面圖所列之數字為以毫米標示之建築結構呎吋。

# FLOOR PLANS OF RESIDENTIAL PROPERTIES IN THE DEVELOPMENT

## 發展項目的住宅物業的樓面平面圖

SCALE 比例尺：  (Metres)(米)



\* This "Flat Roof" means the uppermost roof slab of the Development.

\* 這個「平台」指發展項目最高的天台樓板。

Roof, Block 2 Floor Plan  
2座天台平面圖

# FLOOR PLANS OF RESIDENTIAL PROPERTIES IN THE DEVELOPMENT

## 發展項目的住宅物業的樓面平面圖

---

The thickness of the floor slabs (excluding plaster of each residential property on Roof Floor of Block 2: Not applicable.

The floor-to-floor height of each residential property on Roof Floor of Block 2: Not applicable.

The internal areas of the residential properties on the upper floors will generally be slightly larger than those on the lower floors because of the reducing thickness of the structural walls on the upper floors.

第2座天台每個住宅物業的樓板(不包括灰泥)的厚度：不適用。

第2座天台每個住宅物業的層與層之間的高度：不適用。

因住宅物業的較高樓層的結構牆的厚度遞減，較高樓層的內部面積，一般比較低樓層的內部面積稍大。

### Abbreviation 縮寫

A/C = Air-conditioner 冷氣機

A.D. = Air Duct 氣槽

DN. = Down 落

P.D. = Pipe Duct 管槽

POTABLE WATER TANK & PUMP RM. = Potable Water Tank and Pump Room 食水缸及泵房

Remarks:

The dimensions in floor plans are all structural dimensions in millimetre.

備註：

平面圖所列之數字為以毫米標示之建築結構呎吋。