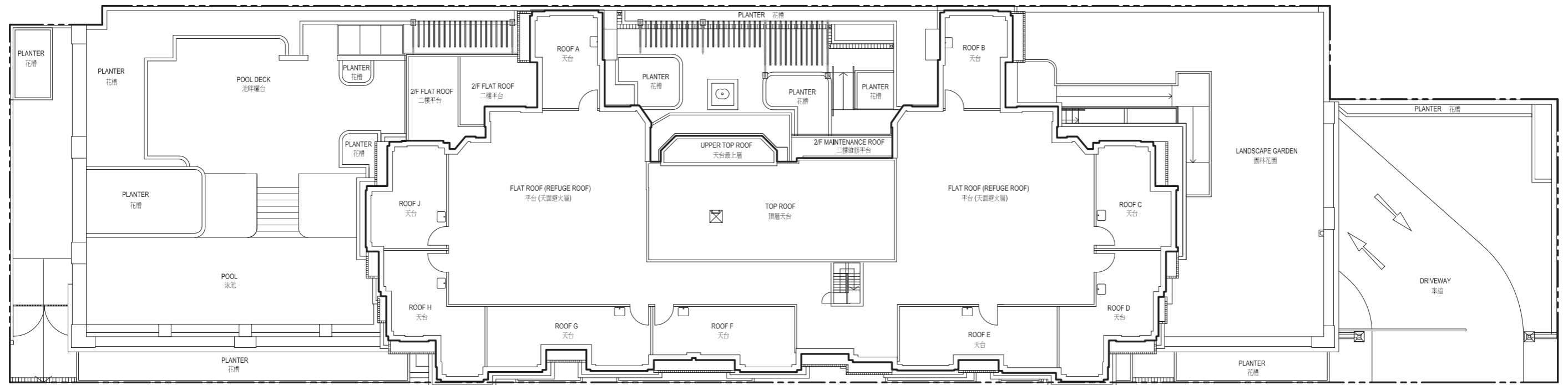
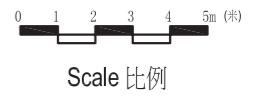


發展項目的布局圖 LAYOUT PLAN OF THE DEVELOPMENT



----- BOUNDARY OF THE DEVELOPMENT
 發展項目邊界



發展項目的認可人士提供的未落成建築物或設施的預計落成日期：2016年6月30日

THE ESTIMATED DATE OF COMPLETION OF THE UNCOMPLETED BUILDINGS OR FACILITIES AS PROVIDED BY THE AUTHORIZED PERSON FOR THE DEVELOPMENT: 30th June 2016