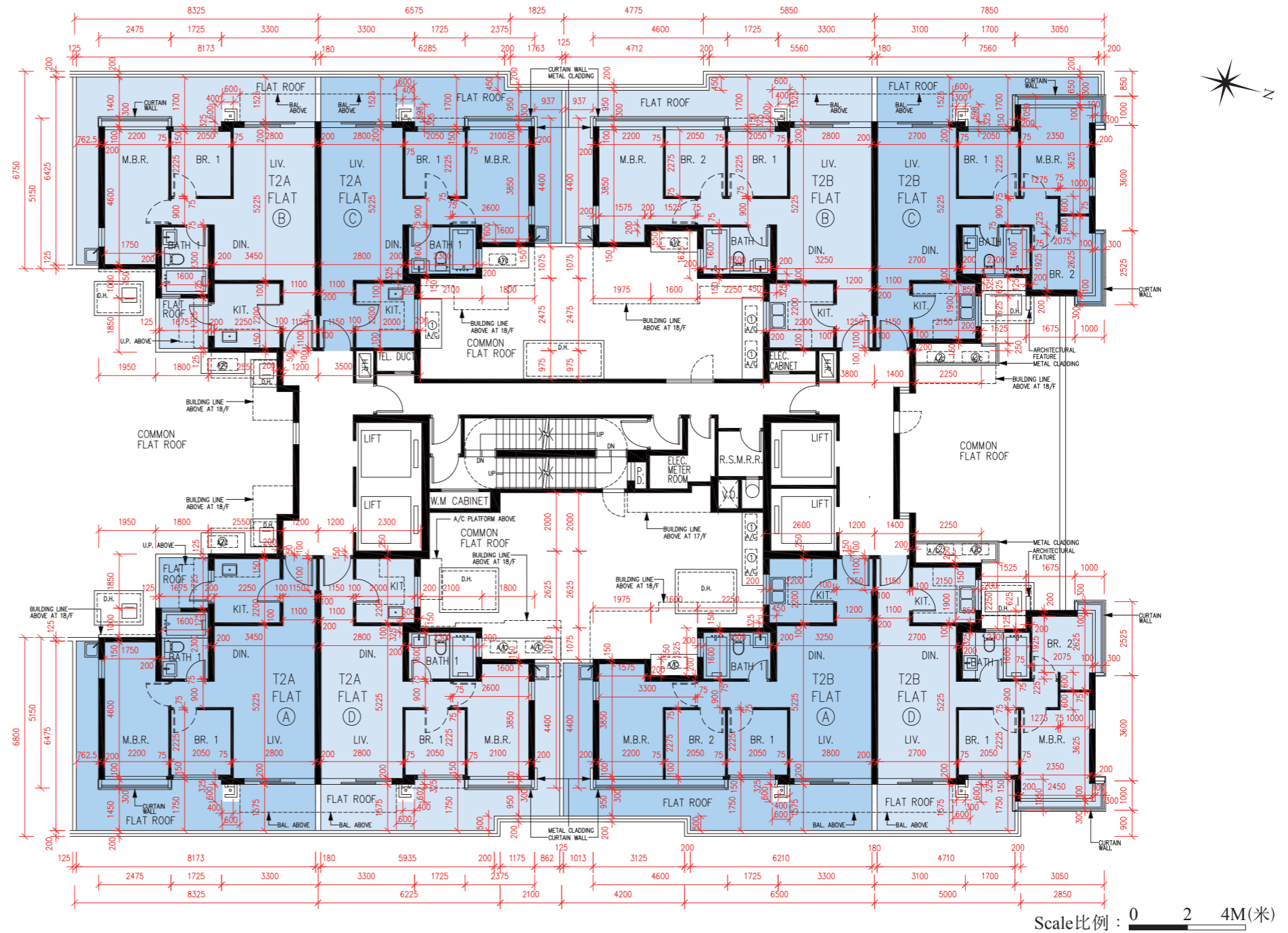


# FLOOR PLANS OF RESIDENTIAL PROPERTIES IN THE PHASE 期數的住宅物業的樓面平面圖

Towers 2A & 2B  
2/F

第2A座及第2B座  
2樓



- The internal areas of the residential properties on the upper floors will generally be slightly larger than those on the lower floors because of the reducing thickness of the structural walls on the upper floors.
  - Please refer to page AL21-AL22 of this sales brochure for legend of the terms and abbreviations shown on the floor plan above and the explanatory notes that are applicable thereto.
- 因住宅物業的較高樓層的結構牆的厚度遞減，較高樓層的內部面積，一般比較低樓層的內部面積稍大。
  - 以上平面圖中顯示之名詞、簡稱及其適用的附註，請參閱本售樓說明書第 AL21 至 AL22 頁。

Note: The dimensions of the floor plans are all structural dimensions in millimeter.

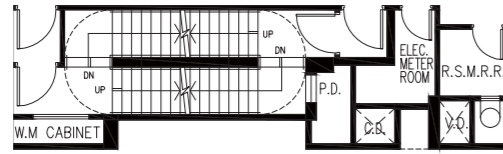
備註：樓面平面圖之尺規所列數字為以毫米標示之建築結構尺寸。

Flat 單位	Tower 2A 第2A座				Tower 2B 第2B座			
	A	B	C	D	A	B	C	D
The thickness of the floor slabs (excluding plaster) of each residential property (mm) 每個住宅物業的樓板 (不包括灰泥) 的厚度 (毫米)	150, 175	150, 175	150	150	150, 175	150, 175	150	150
The floor-to-floor height of each residential property (mm) 每個住宅物業的層與層之間的高度 (毫米)	3000	3000	3000	3000	3000	3000	3000	3000

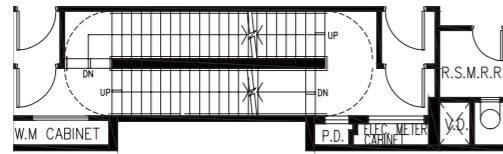
# FLOOR PLANS OF RESIDENTIAL PROPERTIES IN THE PHASE 期數的住宅物業的樓面平面圖

Towers 2A & 2B  
3/F, 5/F-12/F, 15/F-17/F

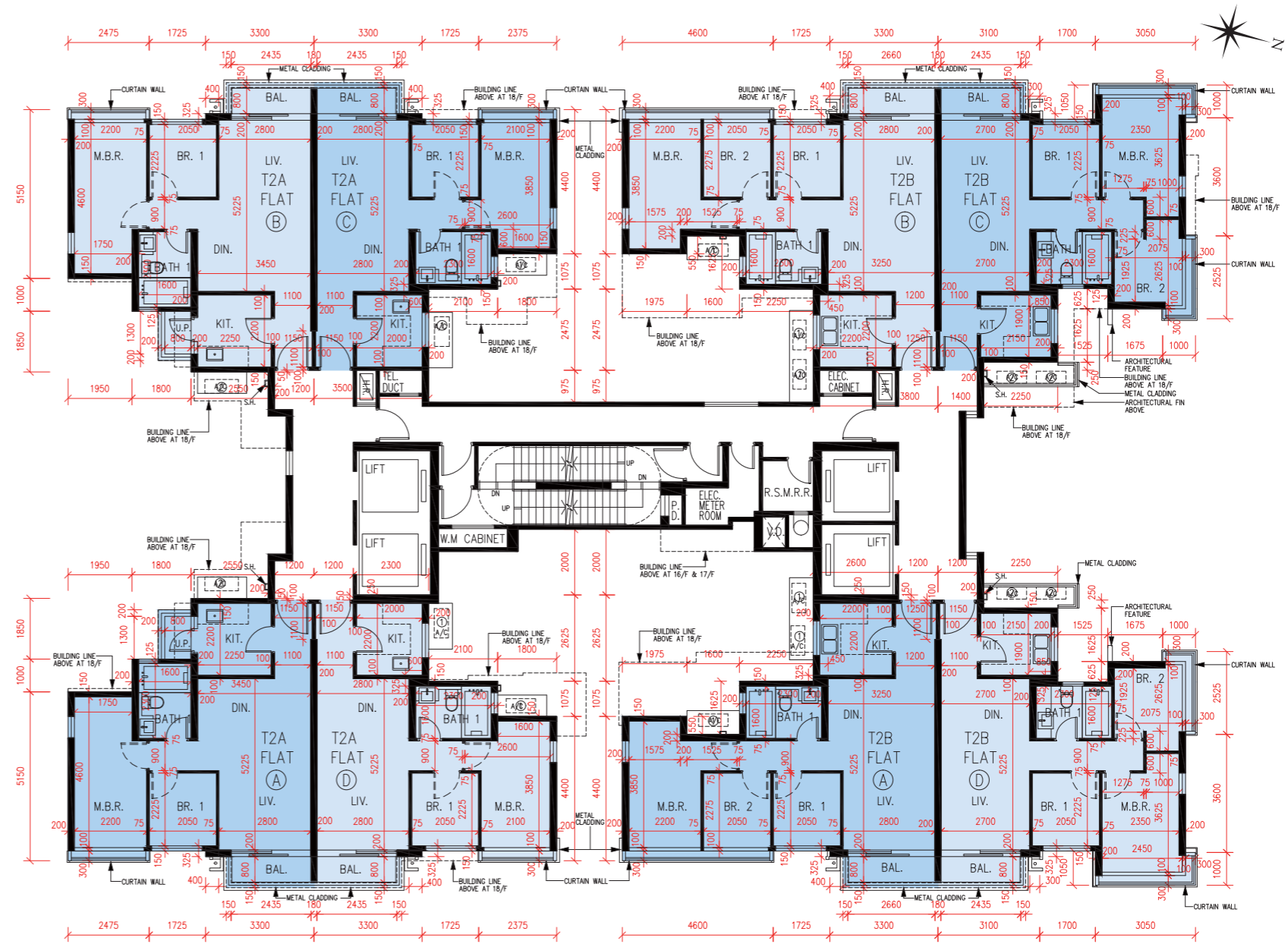
第2A座及第2B座  
3樓、5樓至12樓、15樓至17樓



16/F PART PLAN  
16樓之局部平面圖



17/F PART PLAN  
17樓之局部平面圖



1. The internal areas of the residential properties on the upper floors will generally be slightly larger than those on the lower floors because of the reducing thickness of the structural walls on the upper floors.

2. Please refer to page AL21-AL22 of this sales brochure for legend of the terms and abbreviations shown on the floor plan above and the explanatory notes that are applicable thereto.

1. 因住宅物業的較高樓層的結構牆的厚度遞減，較高樓層的內部面積，一般比較低樓層的內部面積稍大。

2. 以上平面圖中顯示之名詞、簡稱及其適用的附註，請參閱本售樓說明書第AL21至AL22頁。

Note: The dimensions of the floor plans are all structural dimensions in millimeter.

備註：樓面平面圖之尺規所列數字為以毫米標示之建築結構尺寸。

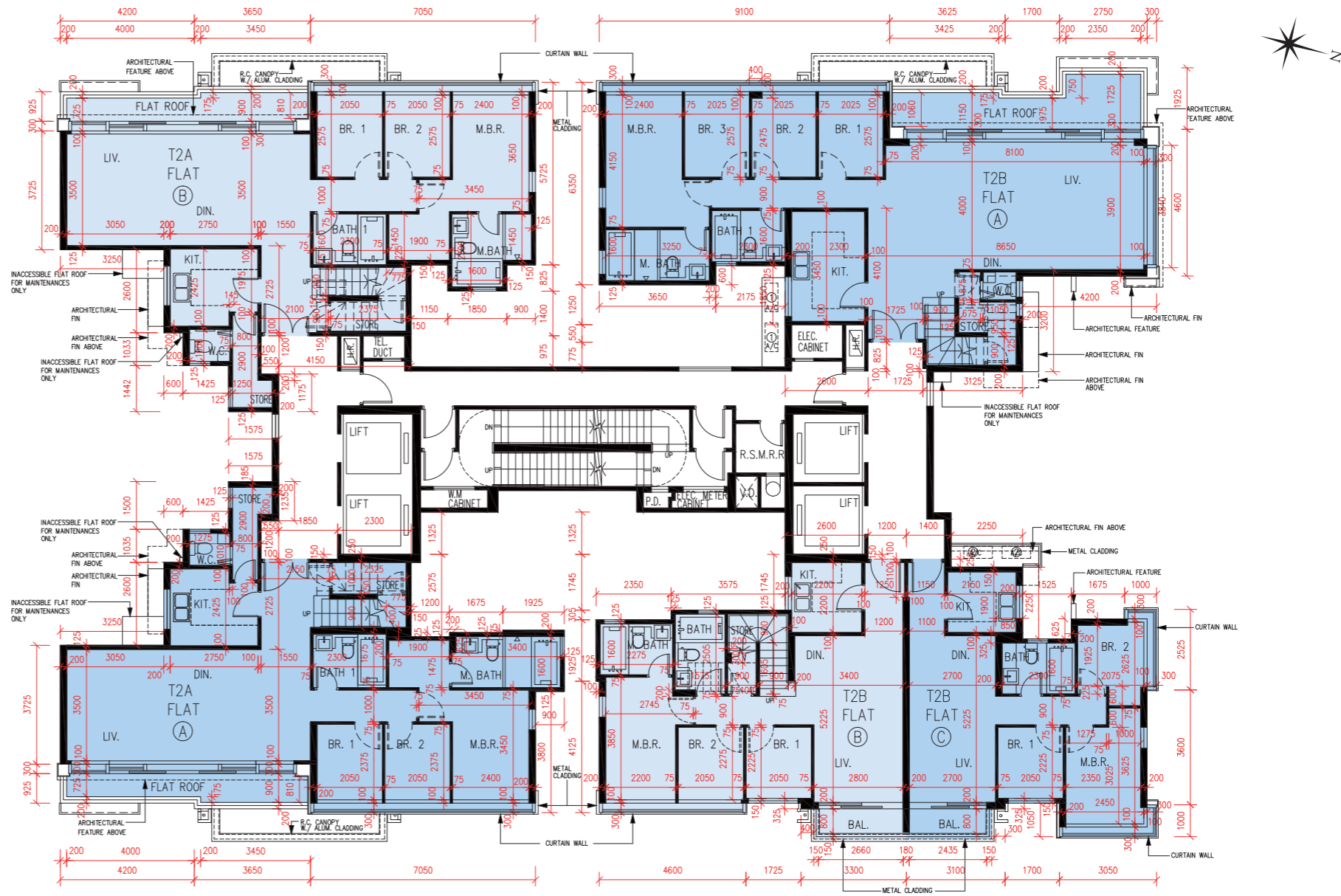
Scale比例：0 2 4M(米)

Floor 樓層	Tower 2A 第2A座								Tower 2B 第2B座							
	3/F, 5/F-12/F, 15/F-16/F 3樓、5樓至12樓、15樓至16樓				17/F 17樓				3/F, 5/F-12/F, 15/F-16/F 3樓、5樓至12樓、15樓至16樓				17/F 17樓			
Flat 單位	A	B	C	D	A	B	C	D	A	B	C	D	A	B	C	D
The thickness of the floor slabs (excluding plaster) of each residential property (mm) 每個住宅物業的樓板(不包括灰泥)的厚度(毫米)	150, 175	150, 175	150	150	150, 175, 300	150, 175, 300	150, 175, 225, 300	150, 175, 225, 300	150, 175	150, 175	150	150	150, 175	150, 225, 300	150	150
The floor-to-floor height of each residential property (mm) 每個住宅物業的層與層之間的高度(毫米)	3000	3000	3000	3000	3150, 3300	3150, 3300	3000, 3150, 3240, 3300	3000, 3150, 3240, 3300	3000	3000	3000	3000	3060, 3300	3000, 3060, 3150, 3300	3060, 3150, 3200, 3300	3060, 3300

# FLOOR PLANS OF RESIDENTIAL PROPERTIES IN THE PHASE 期數的住宅物業的樓面平面圖

Towers 2A & 2B  
18/F

第2A座及第2B座  
18樓



Scale比例: 0 2 4M(米)

- The internal areas of the residential properties on the upper floors will generally be slightly larger than those on the lower floors because of the reducing thickness of the structural walls on the upper floors.
- Please refer to page AL21-AL22 of this sales brochure for legend of the terms and abbreviations shown on the floor plan above and the explanatory notes that are applicable thereto.
  - 因住宅物業的較高樓層的結構牆的厚度遞減，較高樓層的內部面積，一般比較低樓層的內部面積稍大。
  - 以上平面圖中顯示之名詞、簡稱及其適用的附註，請參閱本售樓說明書第 AL21 至 AL22 頁。

Note: The dimensions of the floor plans are all structural dimensions in millimeter.

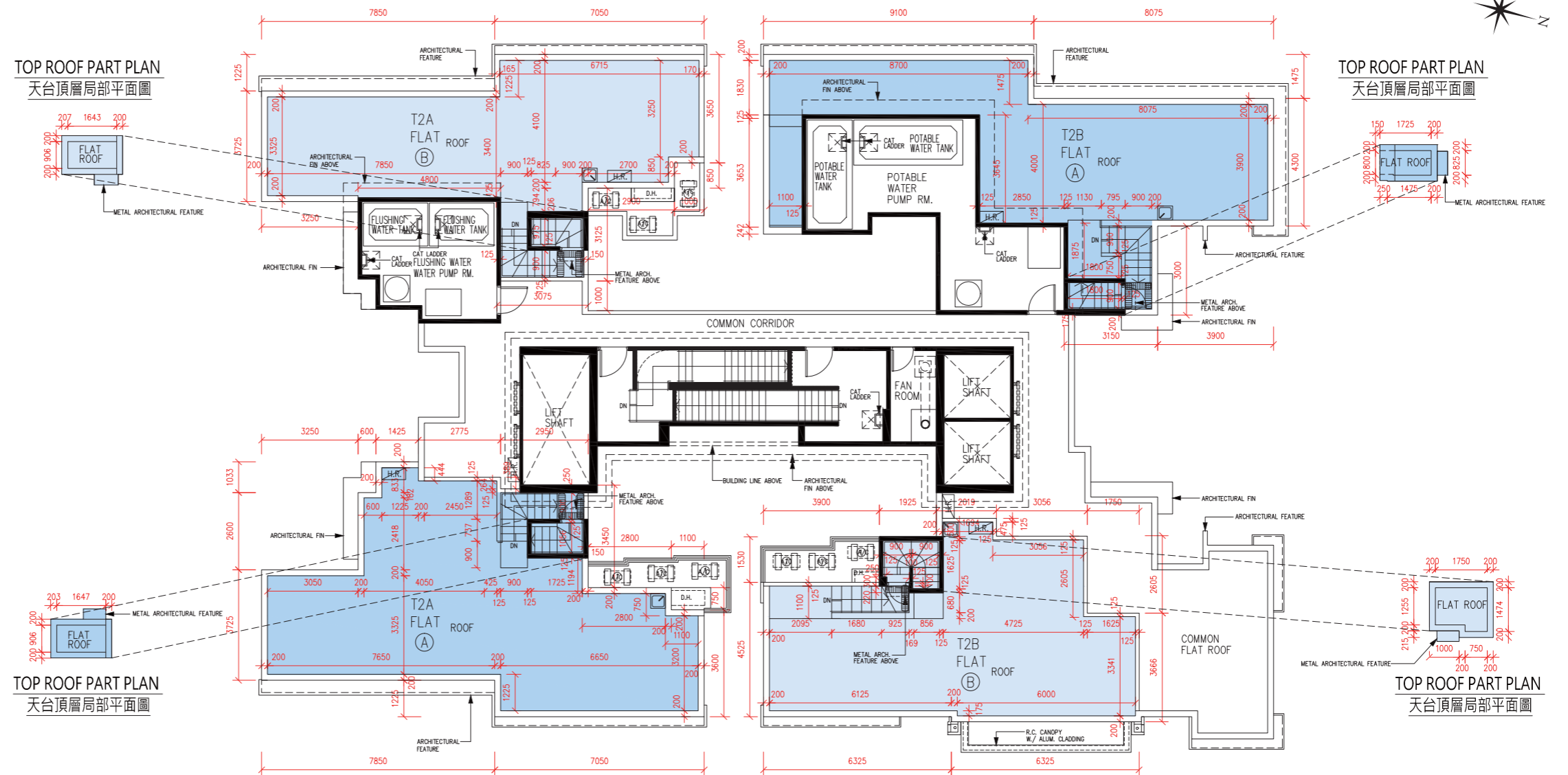
備註：樓面平面圖之尺規所列數字為以毫米標示之建築結構尺寸。

Flat 單位	Tower 2A 第2A座		Tower 2B 第2B座		
	A	B	A	B	C
The thickness of the floor slabs (excluding plaster) of each residential property (mm) 每個住宅物業的樓板(不包括灰泥)的厚度(毫米)	150	150	150	150	150
The floor-to-floor height of each residential property (mm) 每個住宅物業的層與層之間的高度(毫米)	3300	3300	3300	3300	3300

# FLOOR PLANS OF RESIDENTIAL PROPERTIES IN THE PHASE 期數的住宅物業的樓面平面圖

## Towers 2A & 2B Roof

### 第2A座及第2B座 天台



Scale比例: 0 2 4M(米)

- The internal areas of the residential properties on the upper floors will generally be slightly larger than those on the lower floors because of the reducing thickness of the structural walls on the upper floors.
- Please refer to page AL21-AL22 of this sales brochure for legend of the terms and abbreviations shown on the floor plan above and the explanatory notes that are applicable thereto.

- 因住宅物業的較高樓層的結構牆的厚度遞減，較高樓層的內部面積，一般比較低樓層的內部面積稍大。
- 以上平面圖中顯示之名詞、簡稱及其適用的附註，請參閱本售樓說明書第 AL21 至 AL22 頁。

Note: The dimensions of the floor plans are all structural dimensions in millimeter.

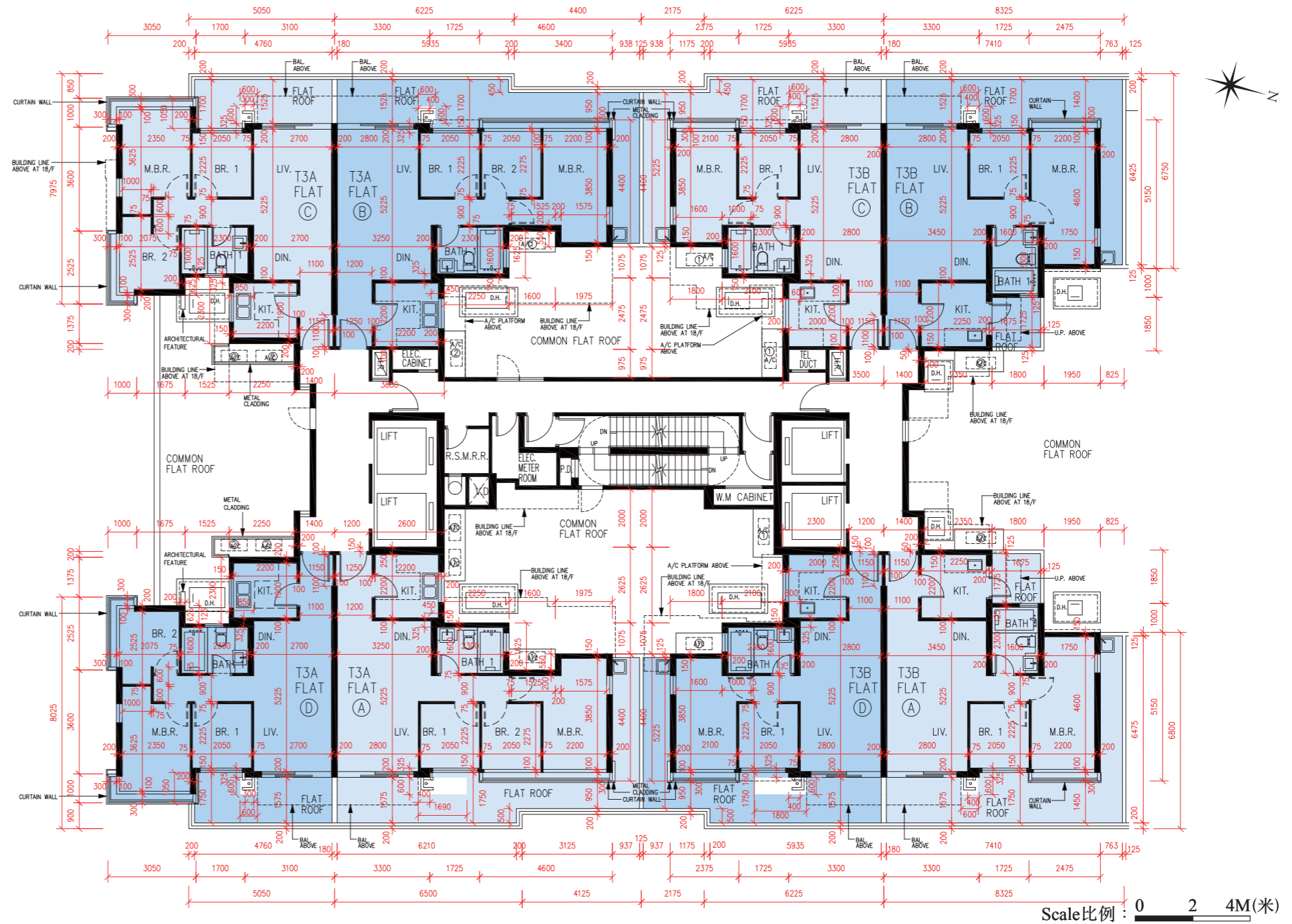
備註：樓面平面圖之尺規所列數字為以毫米標示之建築結構尺寸。

Flat 單位	Tower 2A 第2A座		Tower 2B 第2B座	
	A	B	A	B
The thickness of the floor slabs (excluding plaster) of each residential property (mm) 每個住宅物業的樓板(不包括灰泥)的厚度(毫米)	Not Applicable 不適用	Not Applicable 不適用	Not Applicable 不適用	Not Applicable 不適用
The floor-to-floor height of each residential property (mm) 每個住宅物業的層與層之間的高度(毫米)	Not Applicable 不適用	Not Applicable 不適用	Not Applicable 不適用	Not Applicable 不適用

# FLOOR PLANS OF RESIDENTIAL PROPERTIES IN THE PHASE 期數的住宅物業的樓面平面圖

Towers 3A & 3B  
2/F

第3A座及第3B座  
2樓



- The internal areas of the residential properties on the upper floors will generally be slightly larger than those on the lower floors because of the reducing thickness of the structural walls on the upper floors.
- Please refer to page AL21-AL22 of this sales brochure for legend of the terms and abbreviations shown on the floor plan above and the explanatory notes that are applicable thereto.

- 因住宅物業的較高樓層的結構牆的厚度遞減，較高樓層的內部面積，一般比較低樓層的內部面積稍大。
- 以上平面圖中顯示之名詞、簡稱及其適用的附註，請參閱本售樓說明書第 AL21 至 AL22 頁。

Note: The dimensions of the floor plans are all structural dimensions in millimeter.

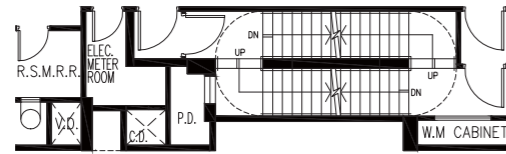
備註：樓面平面圖之尺規所列數字為以毫米標示之建築結構尺寸。

Flat 單位	Tower 3A 第3A座				Tower 3B 第3B座			
	A	B	C	D	A	B	C	D
The thickness of the floor slabs (excluding plaster) of each residential property (mm) 每個住宅物業的樓板 (不包括灰泥) 的厚度 (毫米)	150, 175	150, 175	150	150	150, 175	150, 175	150	150
The floor-to-floor height of each residential property (mm) 每個住宅物業的層與層之間的高度 (毫米)	3000	3000	3000	3000	3000	3000	3000	3000

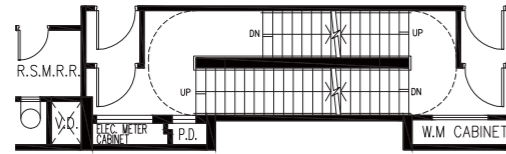
# FLOOR PLANS OF RESIDENTIAL PROPERTIES IN THE PHASE 期數的住宅物業的樓面平面圖

Towers 3A & 3B  
3/F, 5/F-12/F, 15/F-17/F

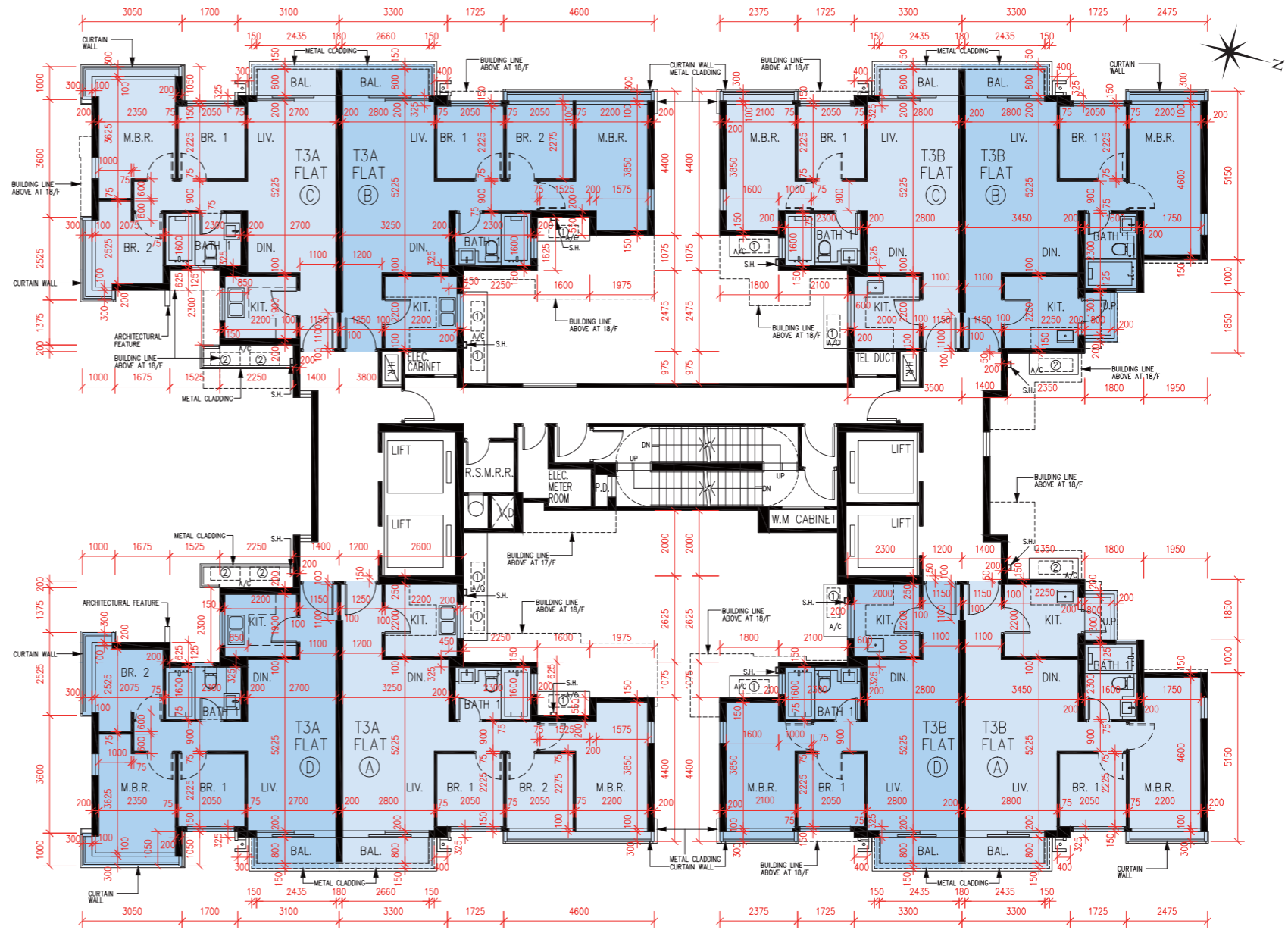
第3A座及第3B座  
3樓、5樓至12樓、15樓至17樓



16/F PART PLAN  
16樓之局部平面圖



17/F PART PLAN  
17樓之局部平面圖



1. The internal areas of the residential properties on the upper floors will generally be slightly larger than those on the lower floors because of the reducing thickness of the structural walls on the upper floors.

2. Please refer to page AL21-AL22 of this sales brochure for legend of the terms and abbreviations shown on the floor plan above and the explanatory notes that are applicable thereto.

1. 因住宅物業的較高樓層的結構牆的厚度遞減，較高樓層的內部面積，一般比較低樓層的內部面積稍大。

2. 以上平面圖中顯示之名詞、簡稱及其適用的附註，請參閱本售樓說明書第AL21至AL22頁。

Note: The dimensions of the floor plans are all structural dimensions in millimeter.

備註：樓面平面圖之尺規所列數字為以毫米標示之建築結構尺寸。

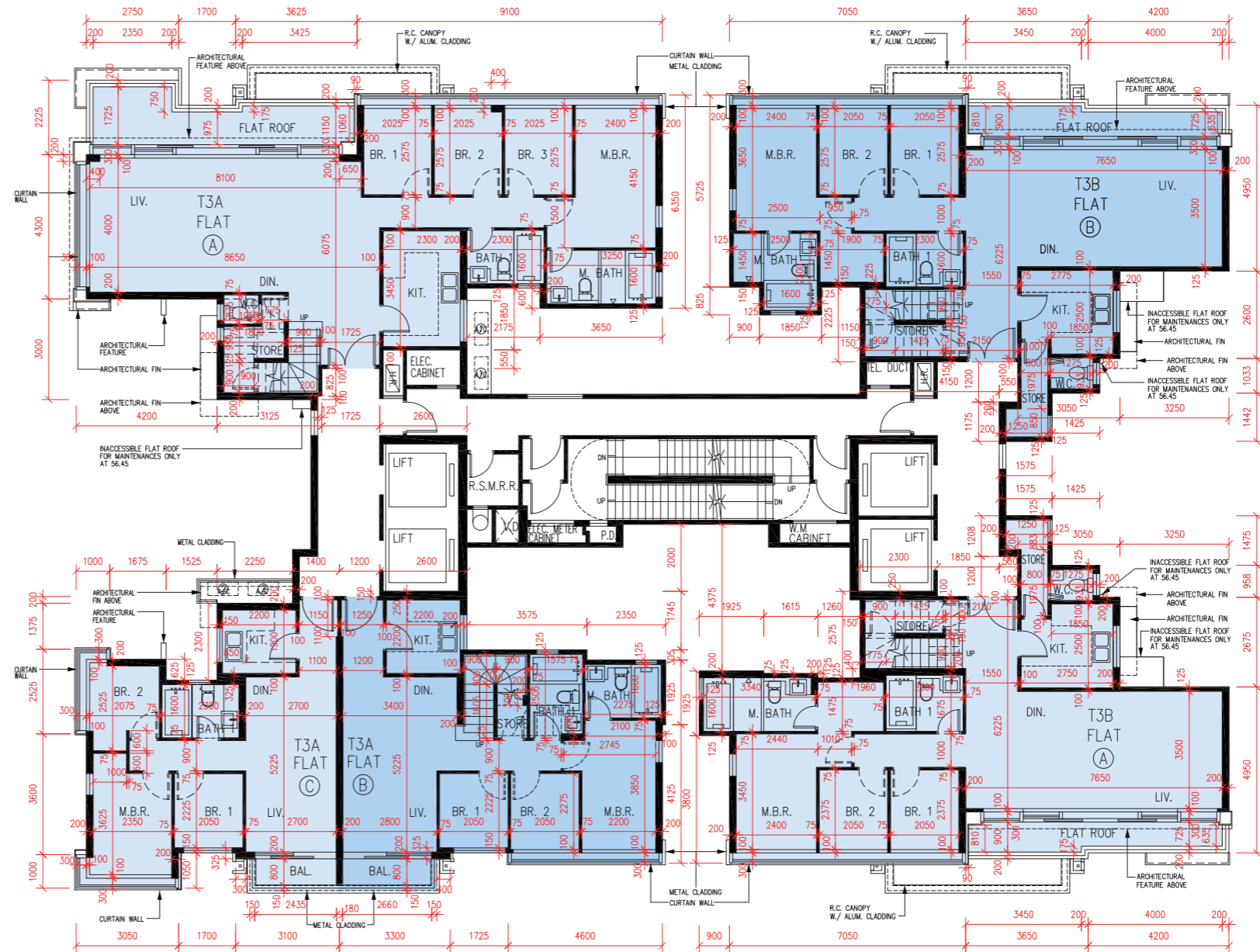
Scale比例：0 2 4M(米)

Floor 樓層	Tower 3A 第3A座								Tower 3B 第3B座							
	3/F, 5/F-12/F, 15/F-16/F 3樓、5樓至12樓、15樓至16樓				17/F 17樓				3/F, 5/F-12/F, 15/F-16/F 3樓、5樓至12樓、15樓至16樓				17/F 17樓			
Flat 單位	A	B	C	D	A	B	C	D	A	B	C	D	A	B	C	D
The thickness of the floor slabs (excluding plaster) of each residential property (mm) 每個住宅物業的樓板(不包括灰泥)的厚度(毫米)	150, 175	150, 175	150	150	150, 175	150, 225, 300	150	150	150, 175	150, 175	150	150	150, 175, 300	150, 175, 300	150, 175, 225, 300	150, 175, 225, 300
The floor-to-floor height of each residential property (mm) 每個住宅物業的層與層之間的高度(毫米)	3000	3000	3000	3000	3060, 3300	3000, 3060, 3150, 3300	3060, 3150, 3200, 3300	3300	3000	3000	3000	3000	3150, 3300	3150, 3300	3000, 3150, 3240, 3300	3000, 3150, 3240, 3300

# FLOOR PLANS OF RESIDENTIAL PROPERTIES IN THE PHASE 期數的住宅物業的樓面平面圖

Towers 3A & 3B  
18/F

第3A座及第3B座  
18樓



Scale比例: 0 2 4M(米)

- The internal areas of the residential properties on the upper floors will generally be slightly larger than those on the lower floors because of the reducing thickness of the structural walls on the upper floors.
  - Please refer to page AL21-AL22 of this sales brochure for legend of the terms and abbreviations shown on the floor plan above and the explanatory notes that are applicable thereto.
- 因住宅物業的較高樓層的結構牆的厚度遞減，較高樓層的內部面積，一般比較低樓層的內部面積稍大。
  - 以上平面圖中顯示之名詞、簡稱及其適用的附註，請參閱本售樓說明書第 AL21 至 AL22 頁。

Note: The dimensions of the floor plans are all structural dimensions in millimeter.

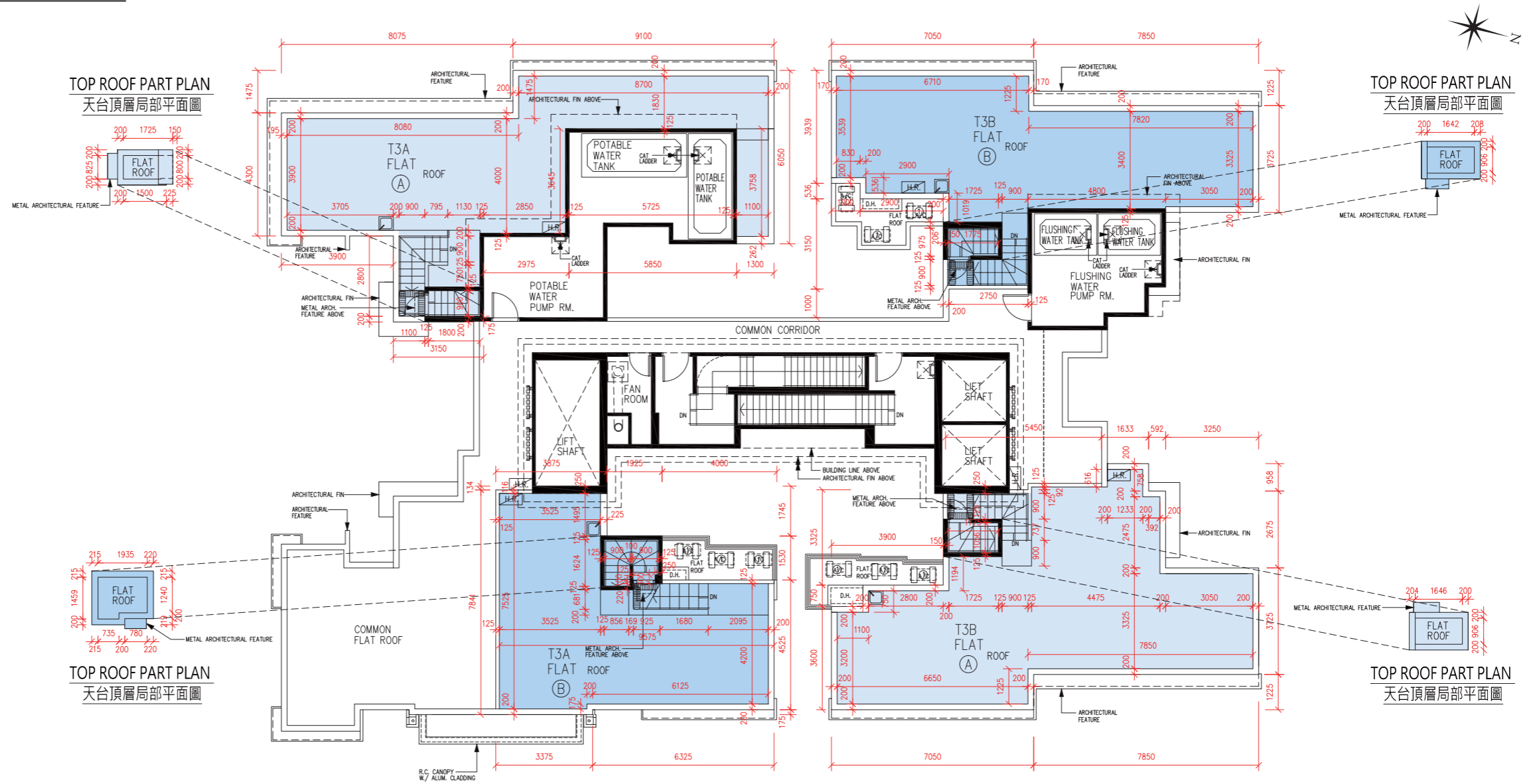
備註：樓面平面圖之尺規所列數字為以毫米標示之建築結構尺寸。

Flat 單位	Tower 3A 第3A座			Tower 3B 第3B座	
	A	B	C	A	B
The thickness of the floor slabs (excluding plaster) of each residential property (mm) 每個住宅物業的樓板(不包括灰泥)的厚度(毫米)	150	150	150	150	150
The floor-to-floor height of each residential property (mm) 每個住宅物業的層與層之間的高度(毫米)	3300	3300	3300	3300	3300

# FLOOR PLANS OF RESIDENTIAL PROPERTIES IN THE PHASE 期數的住宅物業的樓面平面圖

## Towers 3A & 3B Roof

### 第3A座及第3B座 天台



Scale比例: 0 2 4M(米)

- The internal areas of the residential properties on the upper floors will generally be slightly larger than those on the lower floors because of the reducing thickness of the structural walls on the upper floors.
- Please refer to page AL21-AL22 of this sales brochure for legend of the terms and abbreviations shown on the floor plan above and the explanatory notes that are applicable thereto.

- 因住宅物業的較高樓層的結構牆的厚度遞減，較高樓層的內部面積，一般比較低樓層的內部面積稍大。
- 以上平面圖中顯示之名詞、簡稱及其適用的附註，請參閱本售樓說明書第 AL21 至 AL22 頁。

Note: The dimensions of the floor plans are all structural dimensions in millimeter.

備註：樓面平面圖之尺規所列數字為以毫米標示之建築結構尺寸。

Flat 單位	Tower 3A 第3A座		Tower 3B 第3B座	
	A	B	A	B
The thickness of the floor slabs (excluding plaster) of each residential property (mm) 每個住宅物業的樓板(不包括灰泥)的厚度(毫米)	Not Applicable 不適用	Not Applicable 不適用	Not Applicable 不適用	Not Applicable 不適用
The floor-to-floor height of each residential property (mm) 每個住宅物業的層與層之間的高度(毫米)	Not Applicable 不適用	Not Applicable 不適用	Not Applicable 不適用	Not Applicable 不適用

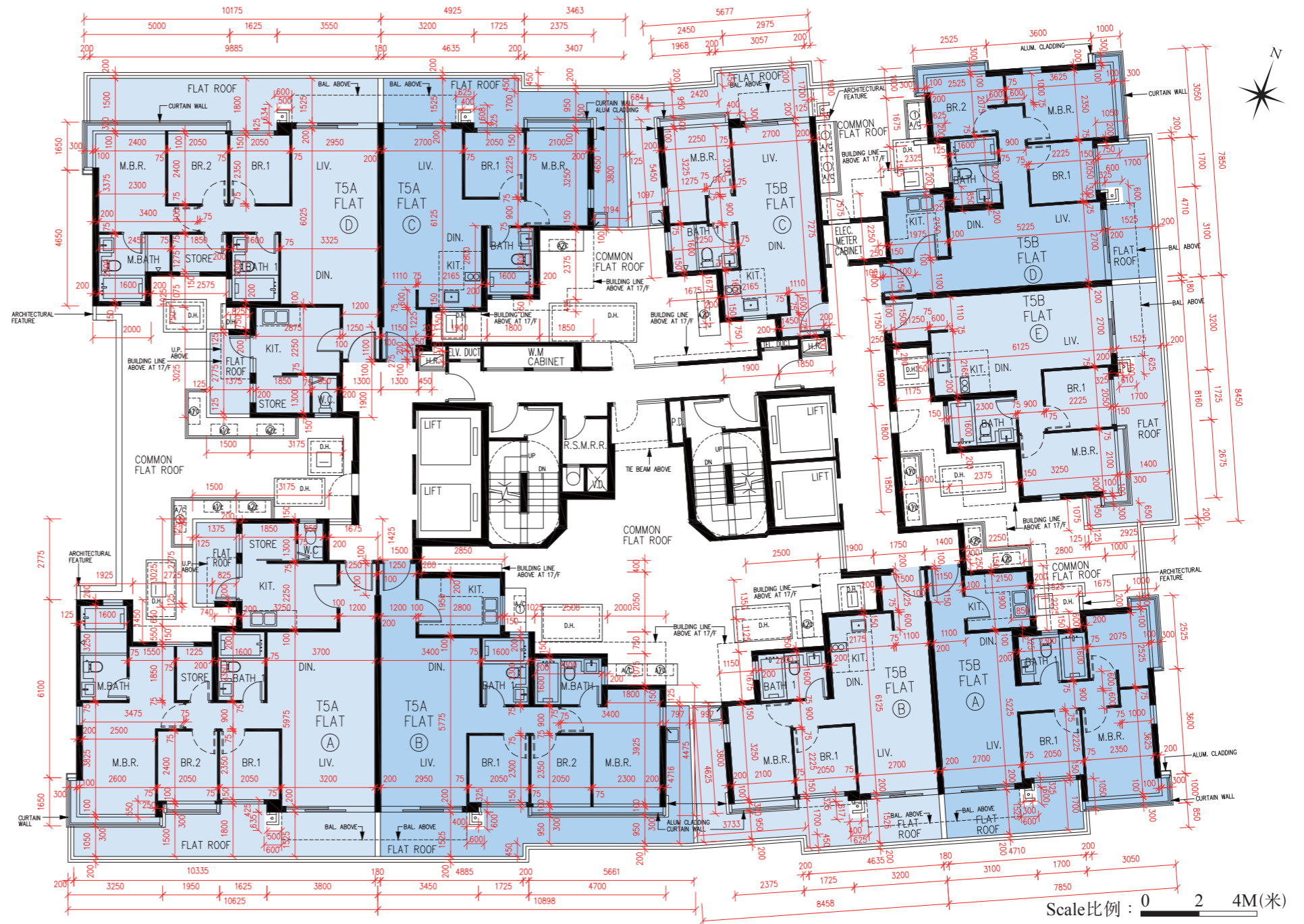


# FLOOR PLANS OF RESIDENTIAL PROPERTIES IN THE PHASE 期數的住宅物業的樓面平面圖

Towers 5A & 5B

2/F

第5A座及第5B座  
2樓



- The internal areas of the residential properties on the upper floors will generally be slightly larger than those on the lower floors because of the reducing thickness of the structural walls on the upper floors.
  - Please refer to page AL21-AL22 of this sales brochure for legend of the terms and abbreviations shown on the floor plan above and the explanatory notes that are applicable thereto.
- 因住宅物業的較高樓層的結構牆的厚度遞減，較高樓層的內部面積，一般比較低樓層的內部面積稍大。
  - 以上平面圖中顯示之名詞、簡稱及其適用的附註，請參閱本售樓說明書第 AL21 至 AL22 頁。

Note: The dimensions of the floor plans are all structural dimensions in millimeter.

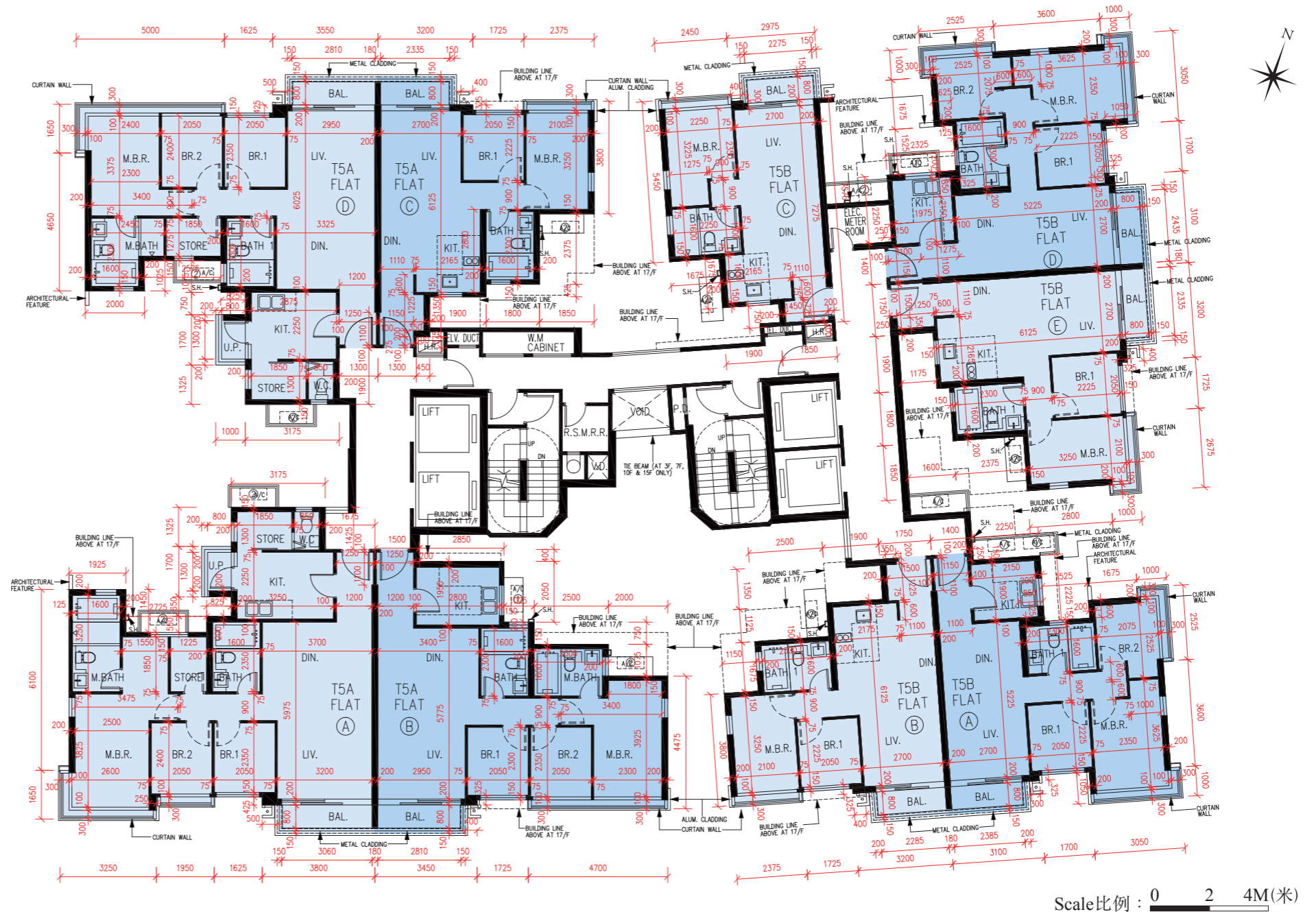
備註：樓面平面圖之尺規所列數字為以毫米標示之建築結構尺寸。

Flat 單位	Tower 5A 第5A座				Tower 5B 第5B座				
	A	B	C	D	A	B	C	D	E
The thickness of the floor slabs (excluding plaster) of each residential property (mm) 每個住宅物業的樓板 (不包括灰泥) 的厚度 (毫米)	150, 175	150, 175	150, 175	150, 175	150	150, 175	150, 175	150	150
The floor-to-floor height of each residential property (mm) 每個住宅物業的層與層之間的高度 (毫米)	3000	3000	3000	3000	3000	3000	3000	3000	3000

# FLOOR PLANS OF RESIDENTIAL PROPERTIES IN THE PHASE 期數的住宅物業的樓面平面圖

Towers 5A & 5B  
3/F, 5/F-12/F, 15/F-16/F

第5A座及第5B座  
3樓、5樓至12樓、15樓至16樓



1. The internal areas of the residential properties on the upper floors will generally be slightly larger than those on the lower floors because of the reducing thickness of the structural walls on the upper floors.
2. Please refer to page AL21-AL22 of this sales brochure for legend of the terms and abbreviations shown on the floor plan above and the explanatory notes that are applicable thereto.

1. 因住宅物業的較高樓層的結構牆的厚度遞減，較高樓層的內部面積，一般比較低樓層的內部面積稍大。
2. 以上平面圖中顯示之名詞、簡稱及其適用的附註，請參閱本售樓說明書第 AL21 至 AL22 頁。

Note: The dimensions of the floor plans are all structural dimensions in millimeter.

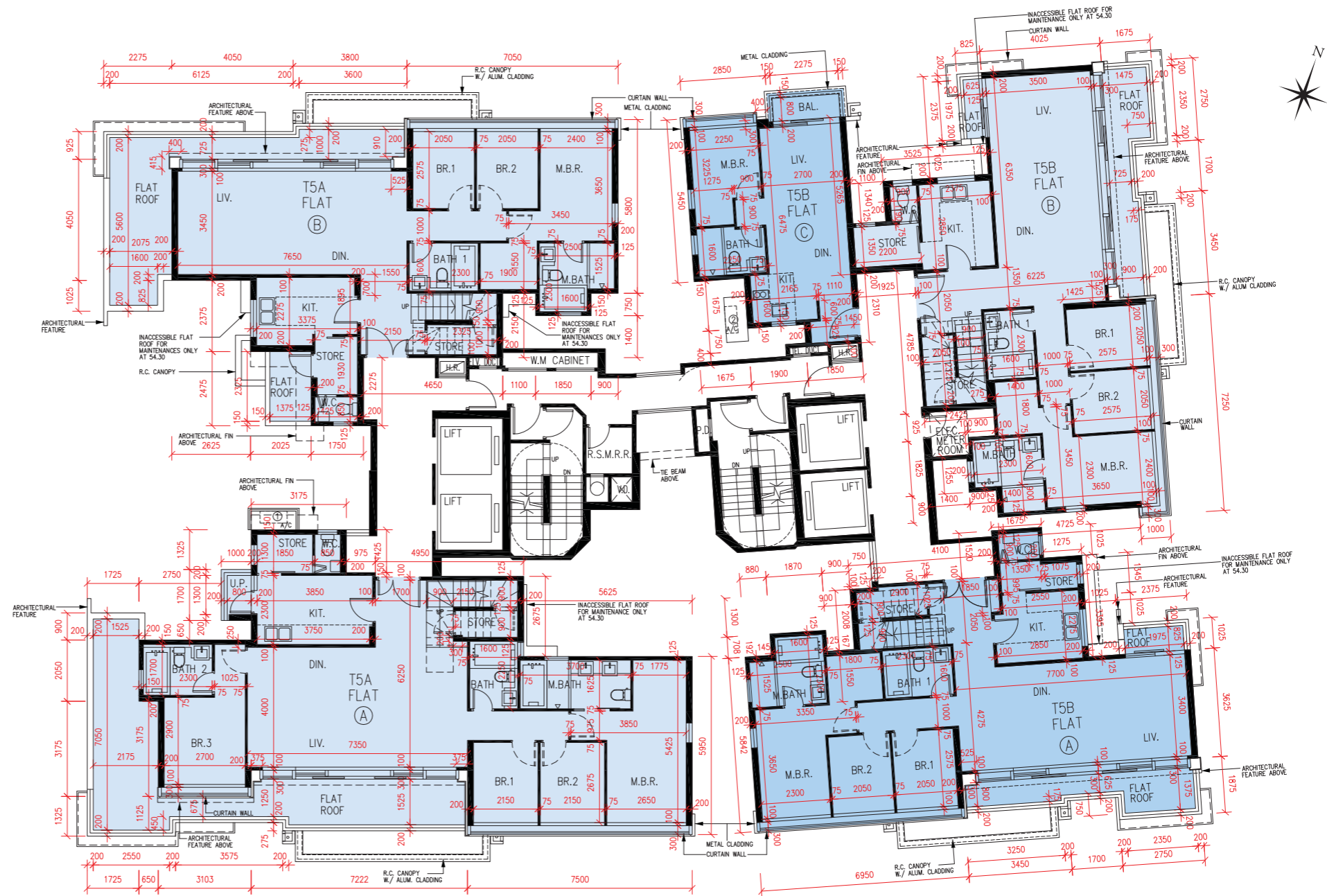
備註：樓面平面圖之尺規所列數字為以毫米標示之建築結構尺寸。

Floor 樓層	Tower 5A 第5A座								Tower 5B 第5B座									
	3/F, 5/F-12/F & 15/F 3樓、5樓至12樓及15樓				16/F 16樓				3/F, 5/F-12/F & 15/F 3樓、5樓至12樓及15樓				16/F 16樓					
Flat 單位	A	B	C	D	A	B	C	D	A	B	C	D	E	A	B	C	D	E
The thickness of the floor slabs (excluding plaster) of each residential property (mm) 每個住宅物業的樓板(不包括灰泥)的厚度(毫米)	150, 175	150, 175	150, 175	150, 175	150, 300	150, 300	150, 225, 300	150, 300	150	150, 175	150, 175	150	150	150	150, 225, 300	150, 175	150	150, 225, 300
The floor-to-floor height of each residential property (mm) 每個住宅物業的層與層之間的高度(毫米)	3000	3000	3000	3000	3000, 3150, 3300	3000, 3150, 3300	3000, 3150, 3240, 3300	3150, 3200, 3240, 3300	3000	3000	3000	3000	3000	3150, 3300	3000, 3150, 3240, 3300	3300	3150, 3300	2900, 3000, 3150, 3240, 3300

# FLOOR PLANS OF RESIDENTIAL PROPERTIES IN THE PHASE 期數的住宅物業的樓面平面圖

Towers 5A & 5B  
17/F

第5A座及第5B座  
17樓



Scale比例: 0 2 4M(米)

- The internal areas of the residential properties on the upper floors will generally be slightly larger than those on the lower floors because of the reducing thickness of the structural walls on the upper floors.
  - Please refer to page AL21-AL22 of this sales brochure for legend of the terms and abbreviations shown on the floor plan above and the explanatory notes that are applicable thereto.
- 因住宅物業的較高樓層的結構牆的厚度遞減，較高樓層的內部面積，一般比較低樓層的內部面積稍大。
  - 以上平面圖中顯示之名詞、簡稱及其適用的附註，請參閱本售樓說明書第 AL21 至 AL22 頁。

Note: The dimensions of the floor plans are all structural dimensions in millimeter.

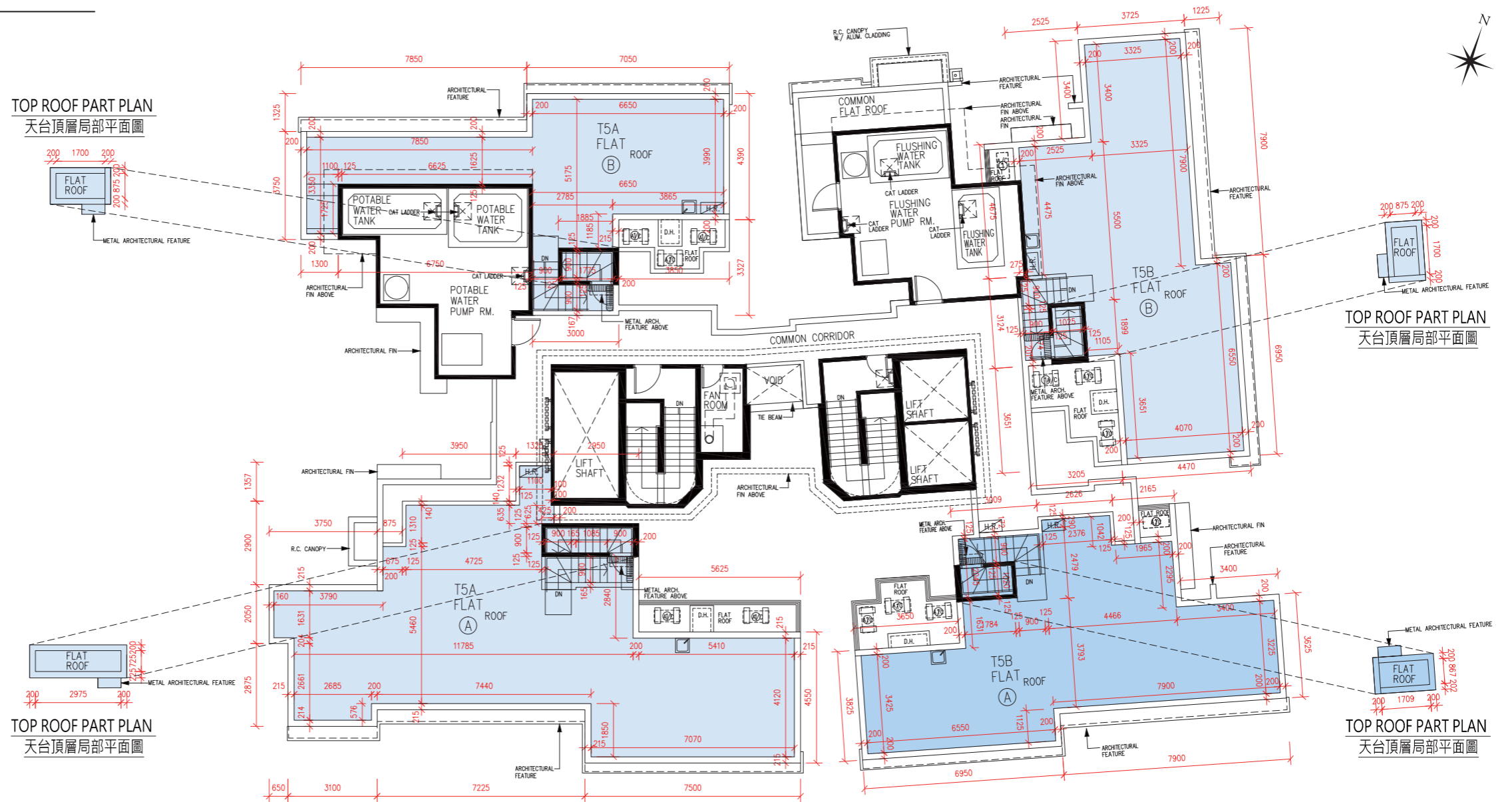
備註：樓面平面圖之尺規所列數字為以毫米標示之建築結構尺寸。

Flat 單位	Tower 5A 第5A座		Tower 5B 第5B座		
	A	B	A	B	C
The thickness of the floor slabs (excluding plaster) of each residential property (mm) 每個住宅物業的樓板(不包括灰泥)的厚度(毫米)	150	150	150, 175	150	150
The floor-to-floor height of each residential property (mm) 每個住宅物業的層與層之間的高度(毫米)	3300	3300	3300	3300	3300

# FLOOR PLANS OF RESIDENTIAL PROPERTIES IN THE PHASE 期數的住宅物業的樓面平面圖

## Towers 5A & 5B Roof

### 第5A座及第5B座 天台



Scale比例: 0 2 4M(米)

- The internal areas of the residential properties on the upper floors will generally be slightly larger than those on the lower floors because of the reducing thickness of the structural walls on the upper floors.
- Please refer to page AL21-AL22 of this sales brochure for legend of the terms and abbreviations shown on the floor plan above and the explanatory notes that are applicable thereto.

- 因住宅物業的較高樓層的結構牆的厚度遞減，較高樓層的內部面積，一般比較低樓層的內部面積稍大。
- 以上平面圖中顯示之名詞、簡稱及其適用的附註，請參閱本售樓說明書第 AL21 至 AL22 頁。

Note: The dimensions of the floor plans are all structural dimensions in millimeter.

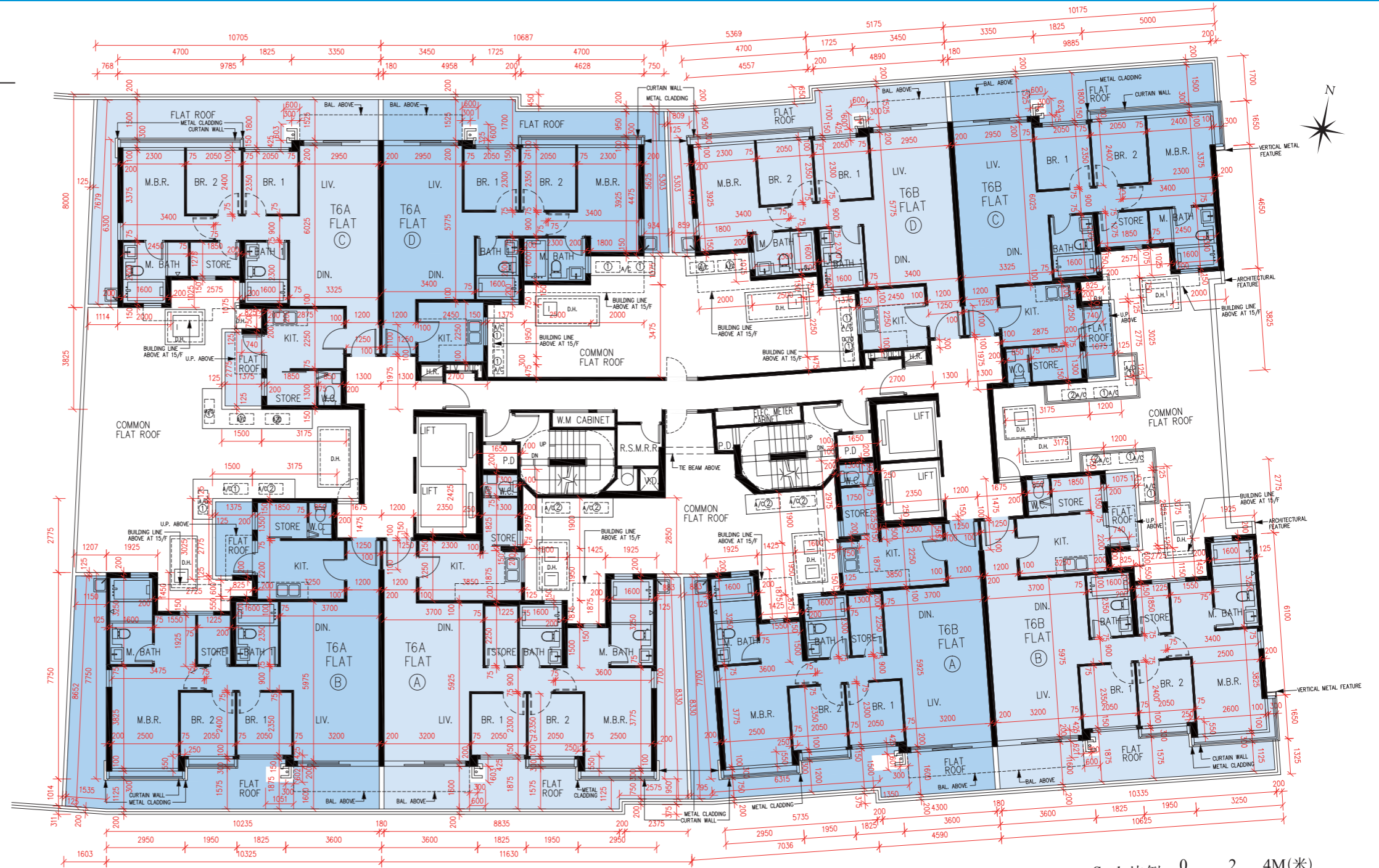
備註：樓面平面圖之尺規所列數字為以毫米標示之建築結構尺寸。

Flat 單位	Tower 5A 第5A座		Tower 5B 第5B座	
	A	B	A	B
The thickness of the floor slabs (excluding plaster) of each residential property (mm) 每個住宅物業的樓板(不包括灰泥)的厚度(毫米)	Not Applicable 不適用	Not Applicable 不適用	Not Applicable 不適用	Not Applicable 不適用
The floor-to-floor height of each residential property (mm) 每個住宅物業的層與層之間的高度(毫米)	Not Applicable 不適用	Not Applicable 不適用	Not Applicable 不適用	Not Applicable 不適用

# FLOOR PLANS OF RESIDENTIAL PROPERTIES IN THE PHASE 期數的住宅物業的樓面平面圖

Towers 6A & 6B  
2/F

第6A座及第6B座  
2樓



Scale比例: 0 2 4M(米)

- The internal areas of the residential properties on the upper floors will generally be slightly larger than those on the lower floors because of the reducing thickness of the structural walls on the upper floors.
- Please refer to page AL21-AL22 of this sales brochure for legend of the terms and abbreviations shown on the floor plan above and the explanatory notes that are applicable thereto.

- 因住宅物業的較高樓層的結構牆的厚度遞減，較高樓層的內部面積，一般比較低樓層的內部面積稍大。
- 以上平面圖中顯示之名詞、簡稱及其適用的附註，請參閱本售樓說明書第 AL21 至 AL22 頁。

Note: The dimensions of the floor plans are all structural dimensions in millimeter.

備註：樓面平面圖之尺規所列數字為以毫米標示之建築結構尺寸。

Flat 單位	Tower 6A 第6A座				Tower 6B 第6B座			
	A	B	C	D	A	B	C	D
The thickness of the floor slabs (excluding plaster) of each residential property (mm) 每個住宅物業的樓板(不包括灰泥)的厚度(毫米)	150, 175	150, 175	150, 175	150, 175	150, 175	150, 175	150, 175	150, 175
The floor-to-floor height of each residential property (mm) 每個住宅物業的層與層之間的高度(毫米)	3000	3000	3000	3000	3000	3000	3000	3000

# FLOOR PLANS OF RESIDENTIAL PROPERTIES IN THE PHASE 期數的住宅物業的樓面平面圖

Towers 6A & 6B  
3/F, 5/F-12/F

第6A座及第6B座  
3樓、5樓至12樓



- The internal areas of the residential properties on the upper floors will generally be slightly larger than those on the lower floors because of the reducing thickness of the structural walls on the upper floors.
- Please refer to page AL21-AL22 of this sales brochure for legend of the terms and abbreviations shown on the floor plan above and the explanatory notes that are applicable thereto.

- 因住宅物業的較高樓層的結構牆的厚度遞減，較高樓層的內部面積，一般比較低樓層的內部面積稍大。
- 以上平面圖中顯示之名詞、簡稱及其適用的附註，請參閱本售樓說明書第AL21至AL22頁。

Note: The dimensions of the floor plans are all structural dimensions in millimeter.

備註：樓面平面圖之尺規所列數字為以毫米標示之建築結構尺寸。

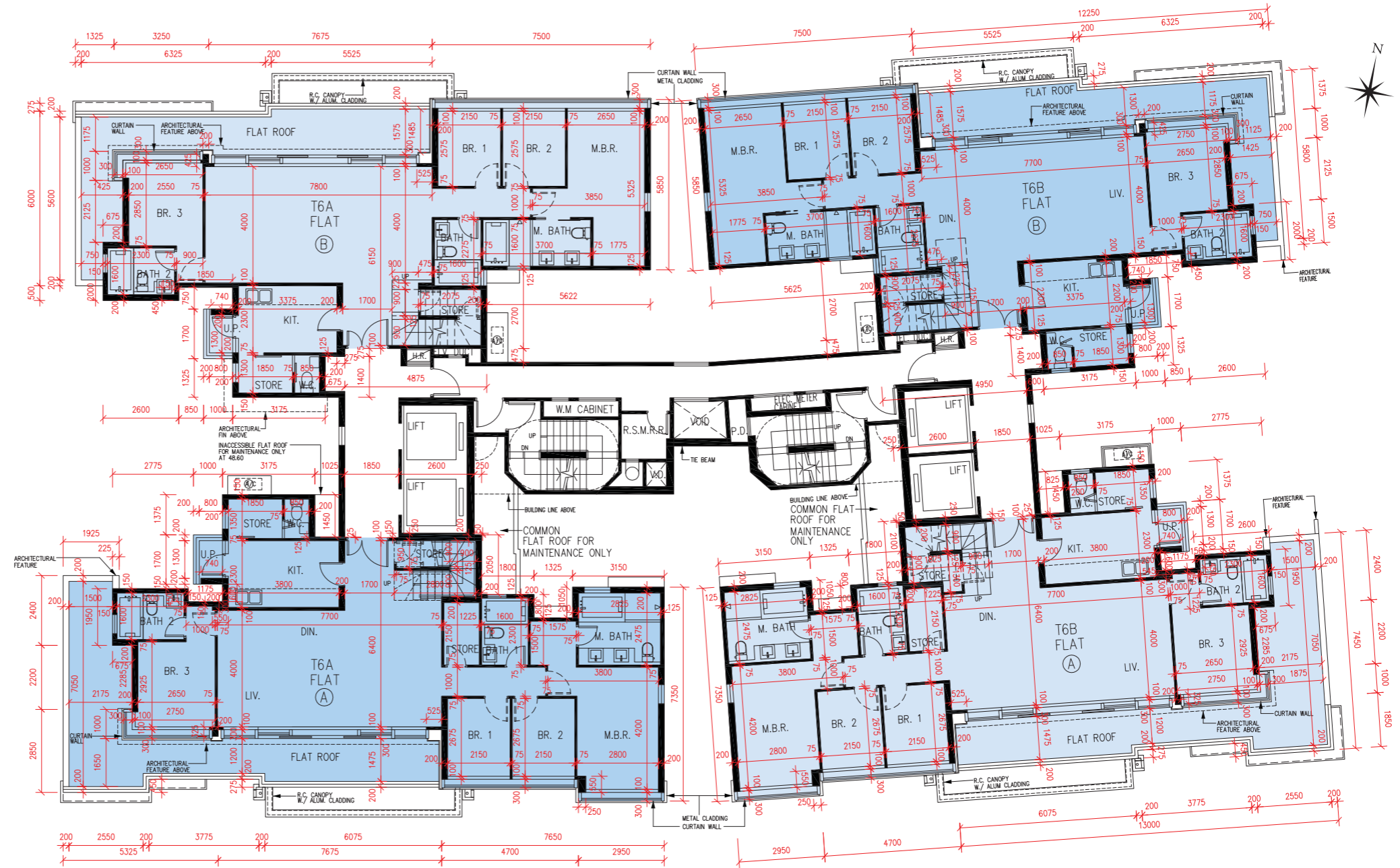
Scale比例：0 2 4M(米)

Floor 樓層	Tower 6A 第6A座								Tower 6B 第6B座							
	3/F, 5/F-11/F 3樓、5樓至11樓				12/F 12樓				3/F, 5/F-11/F 3樓、5樓至11樓				12/F 12樓			
Flat 單位	A	B	C	D	A	B	C	D	A	B	C	D	A	B	C	D
The thickness of the floor slabs (excluding plaster) of each residential property (mm) 每個住宅物業的樓板(不包括灰泥)的厚度(毫米)	150, 175	150, 175	150, 175	150, 175	150, 300	150, 300	150, 300	150, 175, 300	150, 175	150, 175	150, 175	150, 175	150, 300	150, 300	150, 300	150, 175, 300
The floor-to-floor height of each residential property (mm) 每個住宅物業的層與層之間的高度(毫米)	3000	3000	3000	3000	3000, 3150, 3225, 3240, 3300	3060, 3150, 3300	3000, 3060, 3150, 3300	3000, 3150, 3240, 3300	3000	3000	3000	3000	3000, 3150, 3225, 3240, 3300	3060, 3150, 3300	3000, 3060, 3150, 3300	3000, 3150, 3240, 3300

# FLOOR PLANS OF RESIDENTIAL PROPERTIES IN THE PHASE 期數的住宅物業的樓面平面圖

Towers 6A & 6B  
15/F

第6A座及第6B座  
15樓



Scale比例: 0 2 4M(米)

- The internal areas of the residential properties on the upper floors will generally be slightly larger than those on the lower floors because of the reducing thickness of the structural walls on the upper floors.
- Please refer to page AL21-AL22 of this sales brochure for legend of the terms and abbreviations shown on the floor plan above and the explanatory notes that are applicable thereto.

- 因住宅物業的較高樓層的結構牆的厚度遞減，較高樓層的內部面積，一般比較低樓層的內部面積稍大。
- 以上平面圖中顯示之名詞、簡稱及其適用的附註，請參閱本售樓說明書第 AL21 至 AL22 頁。

Note: The dimensions of the floor plans are all structural dimensions in millimeter.

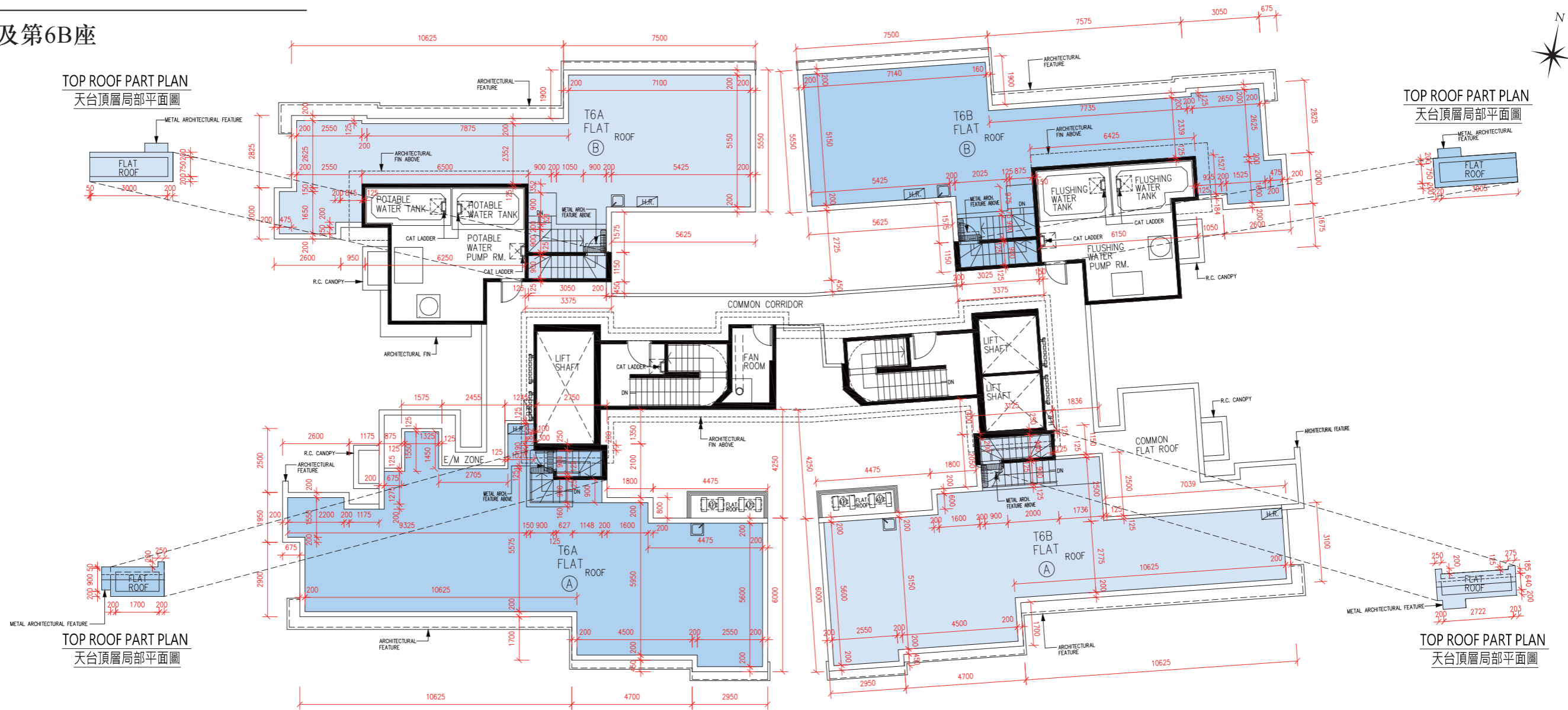
備註：樓面平面圖之尺規所列數字為以毫米標示之建築結構尺寸。

Flat 單位	Tower 6A 第6A座		Tower 6B 第6B座	
	A	B	A	B
The thickness of the floor slabs (excluding plaster) of each residential property (mm) 每個住宅物業的樓板(不包括灰泥)的厚度(毫米)	150	150	150	150
The floor-to-floor height of each residential property (mm) 每個住宅物業的層與層之間的高度(毫米)	3300	3300	3300	3300

# FLOOR PLANS OF RESIDENTIAL PROPERTIES IN THE PHASE 期數的住宅物業的樓面平面圖

## Towers 6A & 6B Roof

### 第6A座及第6B座 天台



Scale比例: 0 2 4M(米)

- The internal areas of the residential properties on the upper floors will generally be slightly larger than those on the lower floors because of the reducing thickness of the structural walls on the upper floors.
- Please refer to page AL21-AL22 of this sales brochure for legend of the terms and abbreviations shown on the floor plan above and the explanatory notes that are applicable thereto.

- 因住宅物業的較高樓層的結構牆的厚度遞減，較高樓層的內部面積，一般比較低樓層的內部面積稍大。
- 以上平面圖中顯示之名詞、簡稱及其適用的附註，請參閱本售樓說明書第 AL21 至 AL22 頁。

Note: The dimensions of the floor plans are all structural dimensions in millimeter.

備註：樓面平面圖之尺規所列數字為以毫米標示之建築結構尺寸。

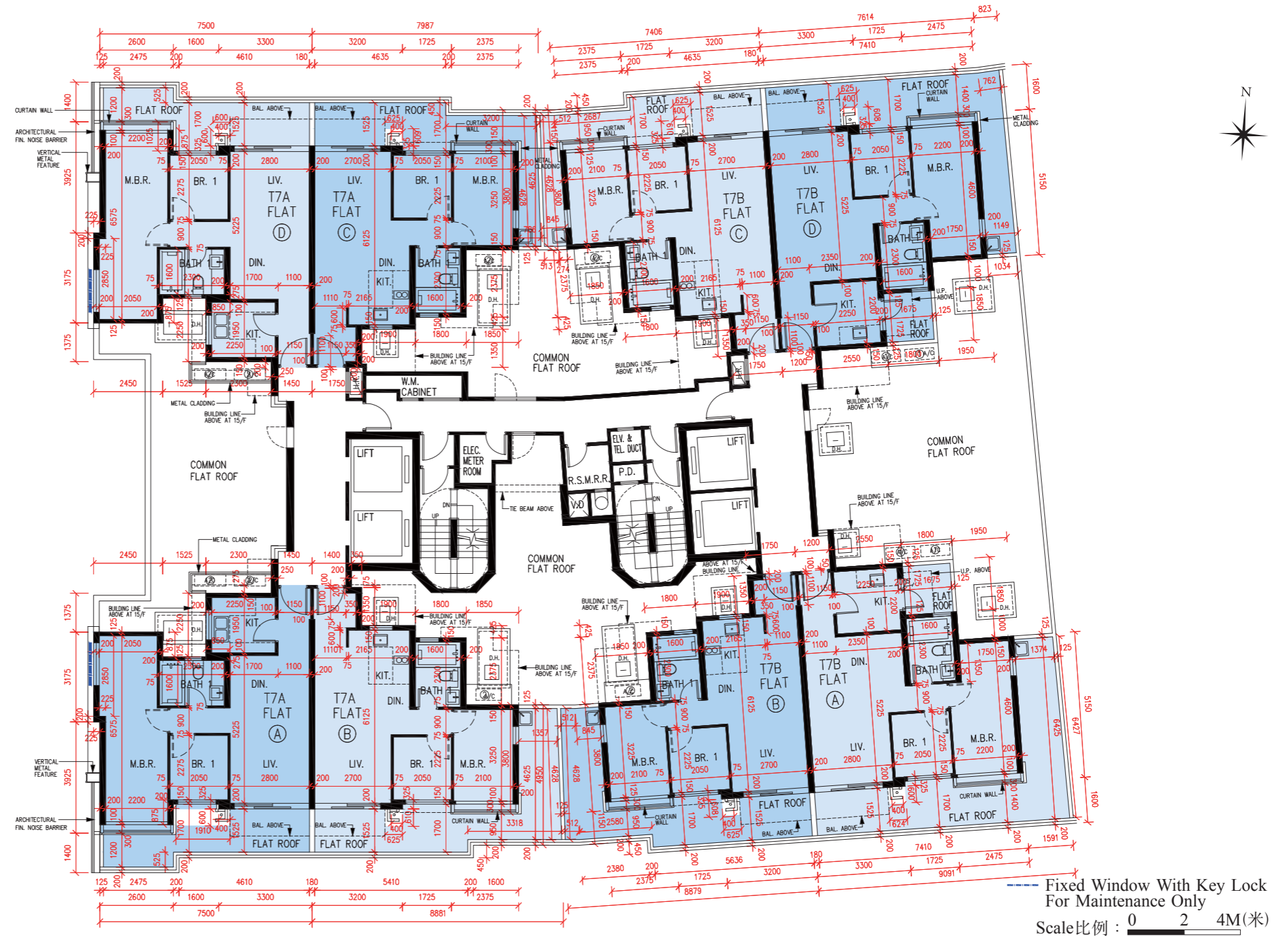
Flat 單位	Tower 6A 第6A座		Tower 6B 第6B座	
	A	B	A	B
The thickness of the floor slabs (excluding plaster) of each residential property (mm) 每個住宅物業的樓板(不包括灰泥)的厚度(毫米)	Not Applicable 不適用	Not Applicable 不適用	Not Applicable 不適用	Not Applicable 不適用
The floor-to-floor height of each residential property (mm) 每個住宅物業的層與層之間的高度(毫米)	Not Applicable 不適用	Not Applicable 不適用	Not Applicable 不適用	Not Applicable 不適用



# FLOOR PLANS OF RESIDENTIAL PROPERTIES IN THE PHASE 期數的住宅物業的樓面平面圖

Towers 7A & 7B  
2/F

第7A座及第7B座  
2樓



- The internal areas of the residential properties on the upper floors will generally be slightly larger than those on the lower floors because of the reducing thickness of the structural walls on the upper floors.
- Please refer to page AL21-AL22 of this sales brochure for legend of the terms and abbreviations shown on the floor plan above and the explanatory notes that are applicable thereto.

- 因住宅物業的較高樓層的結構牆的厚度遞減，較高樓層的內部面積，一般比較低樓層的內部面積稍大。
- 以上平面圖中顯示之名詞、簡稱及其適用的附註，請參閱本售樓說明書第 AL21 至 AL22 頁。

Note: The dimensions of the floor plans are all structural dimensions in millimeter.

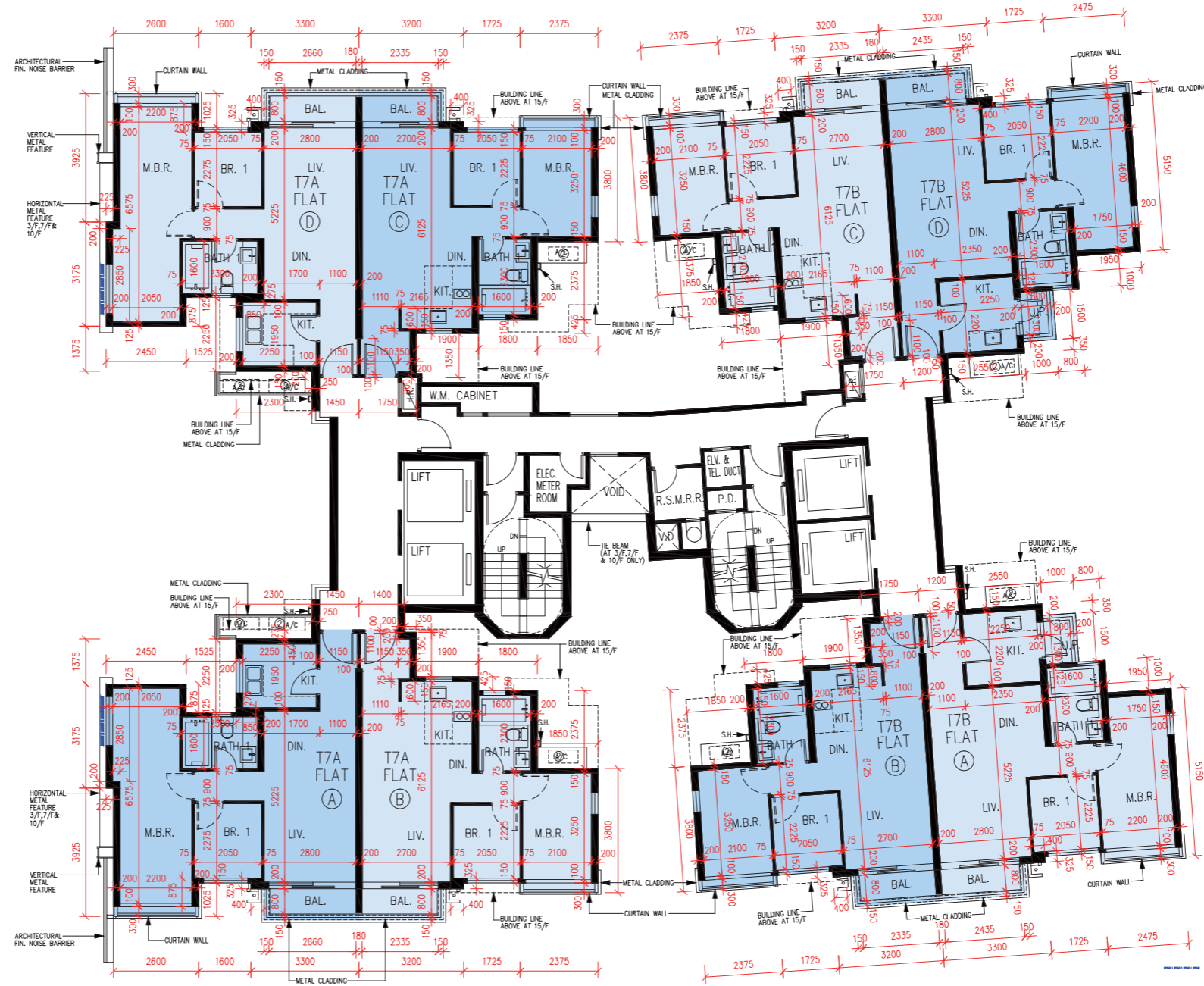
備註：樓面平面圖之尺規所列數字為以毫米標示之建築結構尺寸。

Flat 單位	Tower 7A 第7A座				Tower7B 第7B座			
	A	B	C	D	A	B	C	D
The thickness of the floor slabs (excluding plaster) of each residential property (mm) 每個住宅物業的樓板 (不包括灰泥) 的厚度 (毫米)	150	150, 175	150, 175	150	150, 175	150, 175	150, 175	150, 175
The floor-to-floor height of each residential property (mm) 每個住宅物業的層與層之間的高度 (毫米)	3000	3000	3000	3000	3000	3000	3000	3000

# FLOOR PLANS OF RESIDENTIAL PROPERTIES IN THE PHASE 期數的住宅物業的樓面平面圖

Towers 7A & 7B  
3/F, 5/F-12/F

第7A座及第7B座  
3樓、5樓至12樓



- The internal areas of the residential properties on the upper floors will generally be slightly larger than those on the lower floors because of the reducing thickness of the structural walls on the upper floors.
- Please refer to page AL21-AL22 of this sales brochure for legend of the terms and abbreviations shown on the floor plan above and the explanatory notes that are applicable thereto.

- 因住宅物業的較高樓層的結構牆的厚度遞減，較高樓層的內部面積，一般比較低樓層的內部面積稍大。
- 以上平面圖中顯示之名詞、簡稱及其適用的附註，請參閱本售樓說明書第 AL21 至 AL22 頁。

Note: The dimensions of the floor plans are all structural dimensions in millimeter.

備註：樓面平面圖之尺規所列數字為以毫米標示之建築結構尺寸。

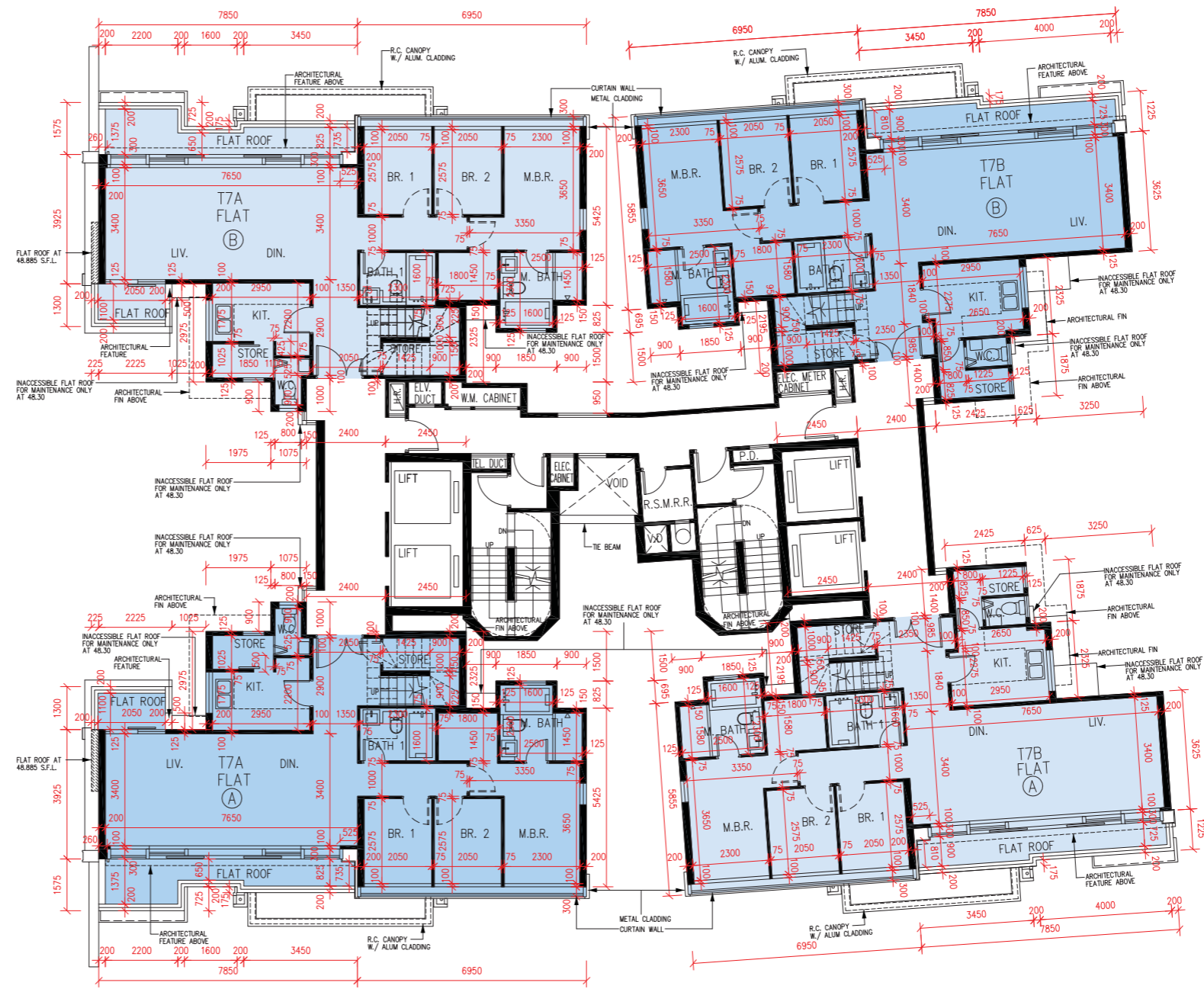
--- Fixed Window With Key Lock For Maintenance Only  
Scale比例：0 2 4M(米)

Floor 樓層	Tower 7A 第7A座								Tower 7B 第7B座							
	3/F, 5/F-11/F 3樓、5樓至11樓				12/F 12樓				3/F, 5/F-11/F 3樓、5樓至11樓				12/F 12樓			
Flat 單位	A	B	C	D	A	B	C	D	A	B	C	D	A	B	C	D
The thickness of the floor slabs (excluding plaster) of each residential property (mm) 每個住宅物業的樓板(不包括灰泥)的厚度(毫米)	150	150, 175	150, 175	150	150, 175	150, 225, 300	150, 225, 300	150, 175	150, 175	150, 175	150, 175	150, 175	150, 175, 300	150, 225, 300	150, 225, 300	150, 175, 300
The floor-to-floor height of each residential property (mm) 每個住宅物業的層與層之間的高度(毫米)	3000	3000	3000	3000	3150, 3300	3000, 3150, 3240, 3300	3000, 3150, 3240, 3300	3150, 3300	3000	3000	3000	3000	3150, 3300	3000, 3150, 3240, 3300	3000, 3150, 3240, 3300	3150, 3300

# FLOOR PLANS OF RESIDENTIAL PROPERTIES IN THE PHASE 期數的住宅物業的樓面平面圖

Towers 7A & 7B  
15/F

第7A座及第7B座  
15樓



Scale比例: 0 2 4M(米)

- The internal areas of the residential properties on the upper floors will generally be slightly larger than those on the lower floors because of the reducing thickness of the structural walls on the upper floors.
- Please refer to page AL21-AL22 of this sales brochure for legend of the terms and abbreviations shown on the floor plan above and the explanatory notes that are applicable thereto.

- 因住宅物業的較高樓層的結構牆的厚度遞減，較高樓層的內部面積，一般比較低樓層的內部面積稍大。
- 以上平面圖中顯示之名詞、簡稱及其適用的附註，請參閱本售樓說明書第 AL21 至 AL22 頁。

Note: The dimensions of the floor plans are all structural dimensions in millimeter.

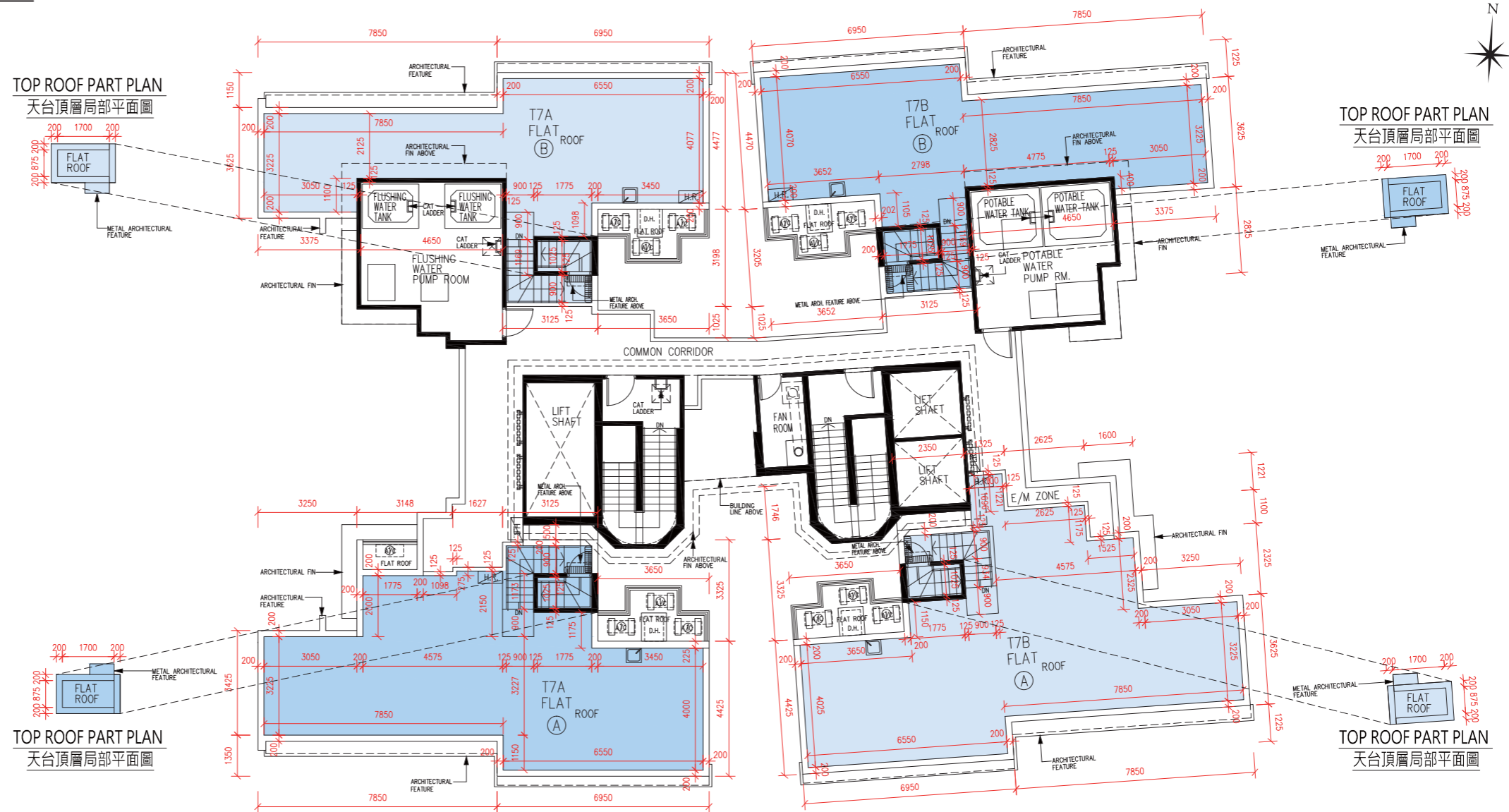
備註：樓面平面圖之尺規所列數字為以毫米標示之建築結構尺寸。

Flat 單位	Tower 7A 第7A座		Tower7B 第7B座	
	A	B	A	B
The thickness of the floor slabs (excluding plaster) of each residential property (mm) 每個住宅物業的樓板(不包括灰泥)的厚度(毫米)	150	150, 250	150	150
The floor-to-floor height of each residential property (mm) 每個住宅物業的層與層之間的高度(毫米)	3300	3300	3300	3300

# FLOOR PLANS OF RESIDENTIAL PROPERTIES IN THE PHASE 期數的住宅物業的樓面平面圖

## Towers 7A & 7B Roof

### 第7A座及第7B座 天台



Scale比例: 0 2 4M(米)

- The internal areas of the residential properties on the upper floors will generally be slightly larger than those on the lower floors because of the reducing thickness of the structural walls on the upper floors.
- Please refer to page AL21-AL22 of this sales brochure for legend of the terms and abbreviations shown on the floor plan above and the explanatory notes that are applicable thereto.

- 因住宅物業的較高樓層的結構牆的厚度遞減，較高樓層的內部面積，一般比較低樓層的內部面積稍大。
- 以上平面圖中顯示之名詞、簡稱及其適用的附註，請參閱本售樓說明書第 AL21 至 AL22 頁。

Note: The dimensions of the floor plans are all structural dimensions in millimeter.

備註：樓面平面圖之尺規所列數字為以毫米標示之建築結構尺寸。

Flat 單位	Tower 7A 第7A座		Tower7B 第7B座	
	A	B	A	B
The thickness of the floor slabs (excluding plaster) of each residential property (mm) 每個住宅物業的樓板 (不包括灰泥) 的厚度 (毫米)	Not Applicable 不適用	Not Applicable 不適用	Not Applicable 不適用	Not Applicable 不適用
The floor-to-floor height of each residential property (mm) 每個住宅物業的層與層之間的高度 (毫米)	Not Applicable 不適用	Not Applicable 不適用	Not Applicable 不適用	Not Applicable 不適用

# FLOOR PLANS OF RESIDENTIAL PROPERTIES IN THE PHASE 期數的住宅物業的樓面平面圖

Legend of Terms and Abbreviations used on Floor Plans 樓面平面圖中所使用名詞及簡稱之圖例

A/C = AIR-CONDITIONING PLATFORM = 冷氣機平台  
 A/C PLATFORM ABOVE = AIR-CONDITIONING PLATFORM ABOVE = 冷氣機平台置上  
 A/C PLATFORM ABOVE AT \*/F = AIR-CONDITIONING PLATFORM ABOVE AT \*/FLOOR = 冷氣機平台置上於第\*樓  
 ALUM. CLADDING = ALUMINIUM CLADDING = 鋁覆蓋層  
 ARCHITECTURAL FEATURE = 建築裝飾  
 ARCHITECTURAL FEATURE ABOVE = 建築裝飾置上  
 ARCHITECTURAL FIN = 建築鰭  
 ARCHITECTURAL FIN ABOVE = 建築鰭置上  
 ARCHITECTURAL FIN. NOISE BARRIER = ARCHITECTURAL FIN NOISE BARRIER = 建築鰭隔音屏障  
 BAL. = BALCONY = 露台  
 BAL. ABOVE = BALCONY ABOVE = 露台置上  
 BATH 1 = BATHROOM 1 = 浴室 1  
 BR. 1 = BEDROOM 1 = 睡房 1  
 BR. 2 = BEDROOM 2 = 睡房 2  
 BR. 3 = BEDROOM 3 = 睡房 3  
 BUILDING LINE ABOVE = 樓宇外牆線置上  
 BUILDING LINE ABOVE AT \*/F = 於第\*樓樓宇外牆線置上  
 C.D. = CABLE DUCT = 電線槽  
 CAT LADDER = 豎梯  
 COMMON CORRIDOR = 公用走廊  
 COMMON FLAT ROOF = 公共平台  
 COMMON FLAT ROOF FOR MAINTENANCE ONLY = 公共平台予維修用途  
 CURTAIN WALL = 玻璃幕牆  
 DIN. = DINING ROOM = 飯廳  
 DN = DOWN = 下  
 D.H. = DOG HOUSE = 管道房  
 ELEC. CABINET = ELECTRIC CABINET = 電錶櫃

ELEC. METER CABINET = ELECTRIC METER CABINET = 電錶櫃  
 ELEC. METER ROOM = ELECTRIC METER ROOM = 電錶房  
 E/M ZONE = ELECTRICAL AND MECHANICAL ZONE = 機電區  
 ELV. DUCT = EXTRA-LOW VOLTAGE DUCT = 特低電壓槽  
 ELV. & TEL. DUCT = EXTRA-LOW VOLTAGE AND TELEPHONE DUCT = 特低電壓槽及電話線槽  
 FAN ROOM = 風機室  
 FIXED WINDOW WITH KEY LOCK FOR MAINTENANCE ONLY = 固定窗戶 (附帶只供維護時用的鎖)  
 FLAT ROOF = 平台  
 FLUSHING WATER TANK = 沖廁水缸房  
 FLUSHING WATER PUMP RM. / FLUSHING WATER WATER PUMP RM. = FLUSHING WATER PUMP ROOM = 沖廁水泵房  
 INACCESSIBLE FLAT ROOF FOR MAINTENANCES ONLY = 無法進入的平台予維修用途  
 H.R. = HOSE REEL = 消防喉轆  
 HORIZONTAL METAL FEATURE 3/F, 7/F & 10/F = 橫置金屬裝飾 3 樓、7 樓及 10 樓  
 KIT. = KITCHEN = 廚房  
 LIFT = 升降機  
 LIFT SHAFT = 升降機槽  
 LIV. = LIVING ROOM = 客廳  
 M. BATH = MASTER BATHROOM = 主人浴室  
 M.B.R. = MASTER BEDROOM = 主人睡房  
 METAL ARCHITECTURAL FEATURE = 金屬建築裝飾  
 METAL ARCH. FEATURE ABOVE = METAL ARCHITECTURAL FEATURE ABOVE = 金屬建築裝飾置上  
 METAL CLADDING = 金屬覆蓋層  
 P.D/ P.D. = PIPE DUCT = 管道槽  
 POTABLE WATER TANK = 食用水缸房  
 POTABLE WATER PUMP RM. = POTABLE WATER PUMP ROOM = 食用水泵房  
 R.C. CANOPY = REINFORCED CONCRETE CANOPY = 鋼筋混凝土簷篷

Explanatory note:

1. Symbols of fittings and fitments shown on the floor plans, such as bathtubs, sink, water closets, shower, sink counter, etc, are architectural symbols retrieved from the latest approved general building plans and for general indication only.
2. There may be architectural features and exposed pipes on external walls.
3. There may be ceiling bulkheads and sunken slab of the above units at living room, dining room, bedrooms, bathrooms, water closet, stores, kitchen, open kitchen and/or corridors of some residential units for the air-conditioning system and/or mechanical and electrical services.
4. The internal ceiling height within some units may vary due to structural, architectural and/or decoration design variations.
5. There may be communal pipes and/or mechanical and electrical services within the balconies, utility platforms, flat roofs and roofs of some residential units.
6. Balconies and utility platforms are non-enclosed areas.

附註：

1. 樓面平面圖上所顯示的形象裝置符號，例如浴缸、洗滌盆、坐廁、花灑、洗滌盆櫃等乃摘自最新的經批准的建築圖則，只作一般性標誌。
2. 外牆或設有建築裝飾及外露喉管道。
3. 部份住宅單位之客廳、飯廳、睡房、浴室、廁所、儲物室、廚房、開放式廚房及 / 或走廊，或設有假天花及上層跌級樓板，內裝有冷氣及 / 或其他機電設備。
4. 部份單位之天花高度將會因應上層單位之結構、建築設計及 / 或裝修設計上的需要而有差異。
5. 部份住宅單位之露台、工作平台、平台及天台內或裝有公用喉管及 / 或其他機電設備。
6. 露台及工作平台為不可封閉的地方。

Legend of Terms and Abbreviations used on Floor Plans 樓面平面圖中所使用名詞及簡稱之圖例

R.C. CANOPY W/ ALUM. CLADDING = REINFORCED CONCRETE CANOPY WITH ALUMINIUM CLADDING = 鋼筋混凝土連鋁覆蓋層簷篷
ROOF = 天台
R.S.M.R.R. = REFUSE STORAGE AND MATERIAL RECOVERY ROOM = 垃圾及物料回收房
S.H. = SAFETY HOOK = 安全掛鉤
STORE = 儲物室
TEL. DUCT / TEL DUCT = TELEPHONE DUCT = 電話線槽
TIE BEAM = 系樑
TIE BEAM ABOVE = 系樑置上
TIE BEAM (AT *F ONLY) / TIE BEAM (AT */F ONLY) = 系樑 (只於第 * 樓)
U.P. = UTILITY PLATFORM = 工作平台
U.P. ABOVE = UTILITY PLATFORM ABOVE = 工作平台置上
UP = 上
V.D / V.D. = VENTILATION DUCT = 通風管道槽
VERTICAL METAL FEATURE = 垂直金屬裝飾
VOID = 中空
W.C. = WATER CLOSET = 廁所
W.M. CABINET / W.M CABINET = WATER METER CABINET = 水錶櫃

Explanatory note:

1. Symbols of fittings and fitments shown on the floor plans, such as bathtubs, sink, water closets, shower, sink counter, etc, are architectural symbols retrieved from the latest approved general building plans and for general indication only.
2. There may be architectural features and exposed pipes on external walls.
3. There may be ceiling bulkheads and sunken slab of the above units at living room, dining room, bedrooms, bathrooms, water closet, stores, kitchen, open kitchen and/or corridors of some residential units for the air-conditioning system and/or mechanical and electrical services.
4. The internal ceiling height within some units may vary due to structural, architectural and/or decoration design variations.
5. There may be communal pipes and/or mechanical and electrical services within the balconies, utility platforms, flat roofs and roofs of some residential units.
6. Balconies and utility platforms are non-enclosed areas.

附註：

1. 樓面平面圖上所顯示的形象裝置符號，例如浴缸、洗滌盆、坐廁、花灑、洗滌盆櫃等乃摘自最新的經批准的建築圖則，只作一般性標誌。
2. 外牆或設有建築裝飾及外露喉管道。
3. 部份住宅單位之客廳、飯廳、睡房、浴室、廁所、儲物室、廚房、開放式廚房及 / 或走廊，或設有假天花及上層跌級樓板，內裝有冷氣及 / 或其他機電設備。
4. 部份單位之天花高度將會因應上層單位之結構、建築設計及 / 或裝修設計上的需要而有差異。
5. 部份住宅單位之露台、工作平台、平台及天台內或裝有公用喉管及 / 或其他機電設備。
6. 露台及工作平台為不可封閉的地方。