

# 發展項目的住宅物業的樓面平面圖 FLOOR PLANS OF RESIDENTIAL PROPERTIES IN THE DEVELOPMENT

## 圖例 Legend

A.A.F.	= 鋁質建築裝飾	ALUMINIUM ARCHITECTURAL FEATURE
A/C PLATFORM	= 空調機平台	AIR-CONDITIONING PLATFORM
BATH	= 浴室	BATHROOM
CABD ROOM	= 公共天線系統房	COMMUNAL AERIAL BROADCAST DISTRIBUTION ROOM
DIN.	= 飯廳	DINING ROOM
HR	= 消防喉轆	HOSE REEL
KIT.	= 廚房	KITCHEN
LIV.	= 客廳	LIVING ROOM
OPEN KIT.	= 開放式廚房	OPEN KITCHEN
P.D.	= 管道槽	PIPE DUCT
R.C.A.F.	= 鋼筋混凝土建築裝飾	REINFORCED CONCRETE ARCHITECTURAL FEATURE
RSMRR	= 垃圾及物料回收室	REFUSE STORAGE MATERIAL RECOVERY ROOM
SMATV	= 衛星天線設備房	SATELLITE MASTER ANTENNA TELEVISION ROOM
UTIL	= 工作平台	UTILITY PLATFORM
W.M.C.	= 水錶櫃	WATER METER CABINET

## 發展項目的住宅物業的樓面平面圖

### FLOOR PLANS OF RESIDENTIAL PROPERTIES IN THE DEVELOPMENT

#### 五樓平面圖 5/F Floor Plan

按發展項目的經批准的建築圖則所規定，發展項目五樓的每個住宅物業的樓板（不包括灰泥）的厚度為：

The thickness of the floor slabs (excluding plaster) of each residential property on 5/F of the Development as provided in the approved building plans is:

單位 Flat	單位（不包括露台及工作平台） Flat (excluding balcony and utility platform)	露台 Balcony	工作平台 Utility Platform
A	150毫米(mm)	150毫米(mm)	150毫米(mm)
B	150毫米(mm)	150毫米(mm)	150毫米(mm)
C	150毫米(mm)	150毫米(mm)	150毫米(mm)
D	150毫米(mm)	150毫米(mm)	-
E	150毫米(mm)	150毫米(mm)	-
F	150毫米(mm)	150毫米(mm)	150毫米(mm)
G	150毫米(mm)	150毫米(mm)	150毫米(mm)

按發展項目的經批准的建築圖則所規定，發展項目五樓每個住宅物業的層與層之間的高度為 3.15 米。

The floor-to-floor height of each residential property on 5/F of the Development as provided in the approved building plans of the Development is 3.15m.

因住宅物業的較高樓層的結構牆的厚度遞減，較高樓層的內部面積，一般比較低樓層的內部面積稍大。

The internal areas of the residential properties on the upper floors will generally be slightly larger than those on the lower floors because of the reducing thickness of the structural walls on the upper floors.

附註：

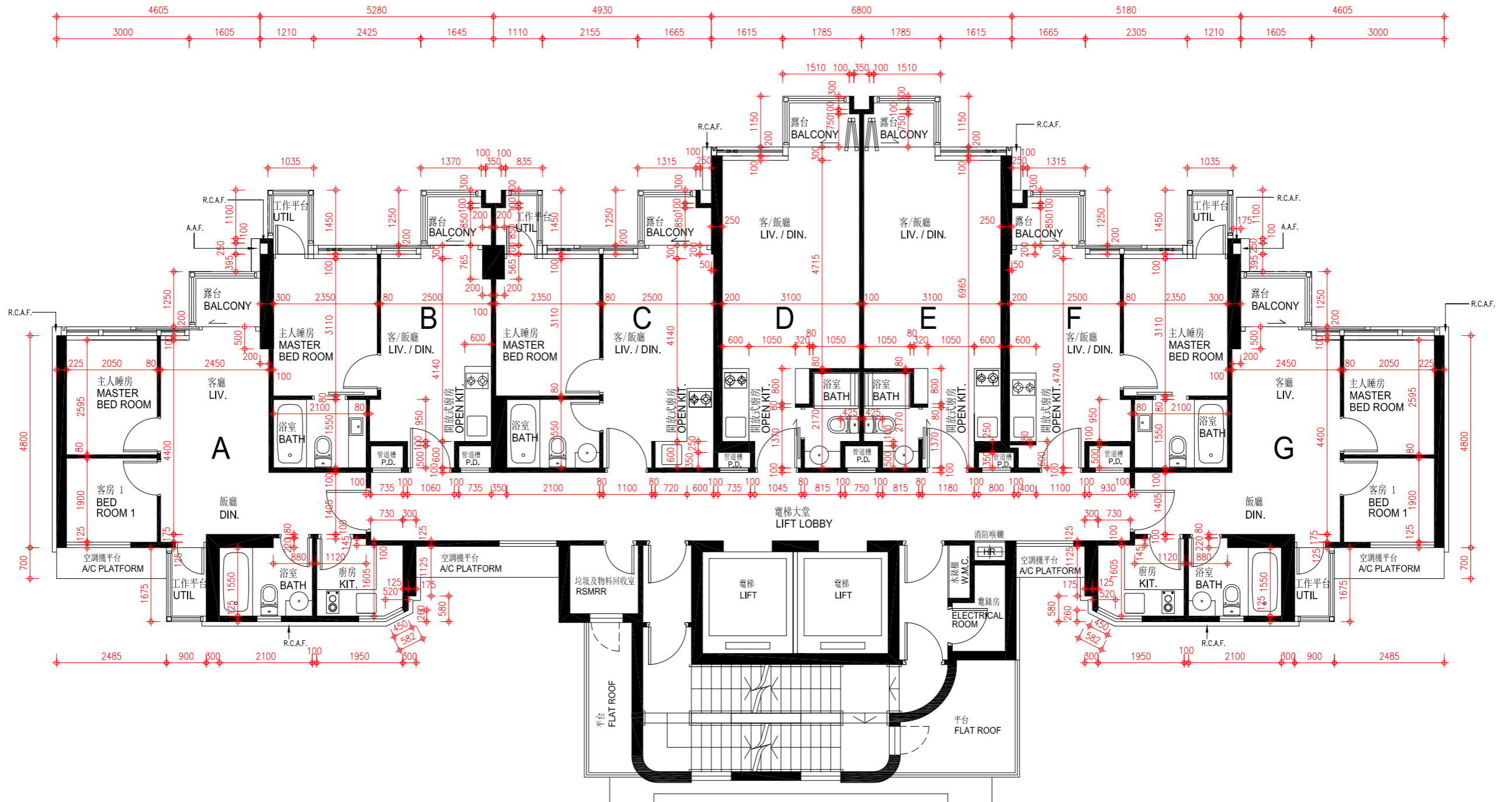
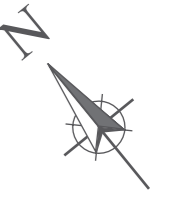
1. 平面圖所列之尺寸數字為以毫米標示之建築尺寸。
2. 外牆設有建築裝飾及/或外露喉管。詳細資料請參考最新批准之建築圖則。
3. 平台及/或外牆設有外露及/或外牆裝飾板內藏之公用喉管。詳細資料請參考最新批准的建築圖則。
4. 部分住宅物業天花有跌級樓板(用以安裝樓上物業之機電設備)。
5. 客/飯廳、睡房、走廊、浴室及/或廚房有假天花以內藏冷氣系統及/或機電設備。
6. 平面圖中顯示之名詞及簡稱請參閱本售樓書第16頁。

Note:

1. The dimensions of floor plans are all structural dimensions in millimeter.
2. There may be architectural features and/or exposed pipes on external walls. For details, please refer to the latest approved building plans.
3. Common pipes exposed and/or enclosed in cladding are located at/adjacent to flat roof and/or external wall. For details, please refer to the latest approved building plans.
4. There are sunken slabs (for mechanical & electrical services of properties above) at some residential properties.
5. There are ceiling bulkheads at living/dining rooms, bedrooms, corridors, bathrooms and/or kitchens enclosing air-conditioning systems and/or mechanical and electrical services.
6. Please refer to page 16 of this sales brochure for legend of the terms and abbreviations shown in the floor plan.

發展項目的住宅物業的樓面平面圖  
 FLOOR PLANS OF RESIDENTIAL PROPERTIES IN THE DEVELOPMENT

五樓平面圖 5/F Floor Plan



0米/M  
 比例: Scale:  
 5米/M

## 發展項目的住宅物業的樓面平面圖

### FLOOR PLANS OF RESIDENTIAL PROPERTIES IN THE DEVELOPMENT

#### 六樓平面圖 6/F Floor Plan

按發展項目的經批准的建築圖則所規定，發展項目六樓的每個住宅物業的樓板（不包括灰泥）的厚度為：

The thickness of the floor slabs (excluding plaster) of each residential property on 6/F of the Development as provided in the approved building plans is:

單位 Flat	單位（不包括露台及工作平台） Flat (excluding balcony and utility platform)	露台 Balcony	工作平台 Utility Platform
A	150毫米(mm)	150毫米(mm)	150毫米(mm)
B	150毫米(mm)	150毫米(mm)	150毫米(mm)
C	150毫米(mm)	150毫米(mm)	150毫米(mm)
D	150毫米(mm)	150毫米(mm)	-
E	150毫米(mm)	150毫米(mm)	-
F	150毫米(mm)	150毫米(mm)	150毫米(mm)
G	150毫米(mm)	150毫米(mm)	150毫米(mm)

按發展項目的經批准的建築圖則所規定，發展項目六樓每個住宅物業的層與層之間的高度為 3.15 米。

The floor-to-floor height of each residential property on 6/F of the Development as provided in the approved building plans of the Development is 3.15m.

因住宅物業的較高樓層的結構牆的厚度遞減，較高樓層的內部面積，一般比較低樓層的內部面積稍大。

The internal areas of the residential properties on the upper floors will generally be slightly larger than those on the lower floors because of the reducing thickness of the structural walls on the upper floors.

附註：

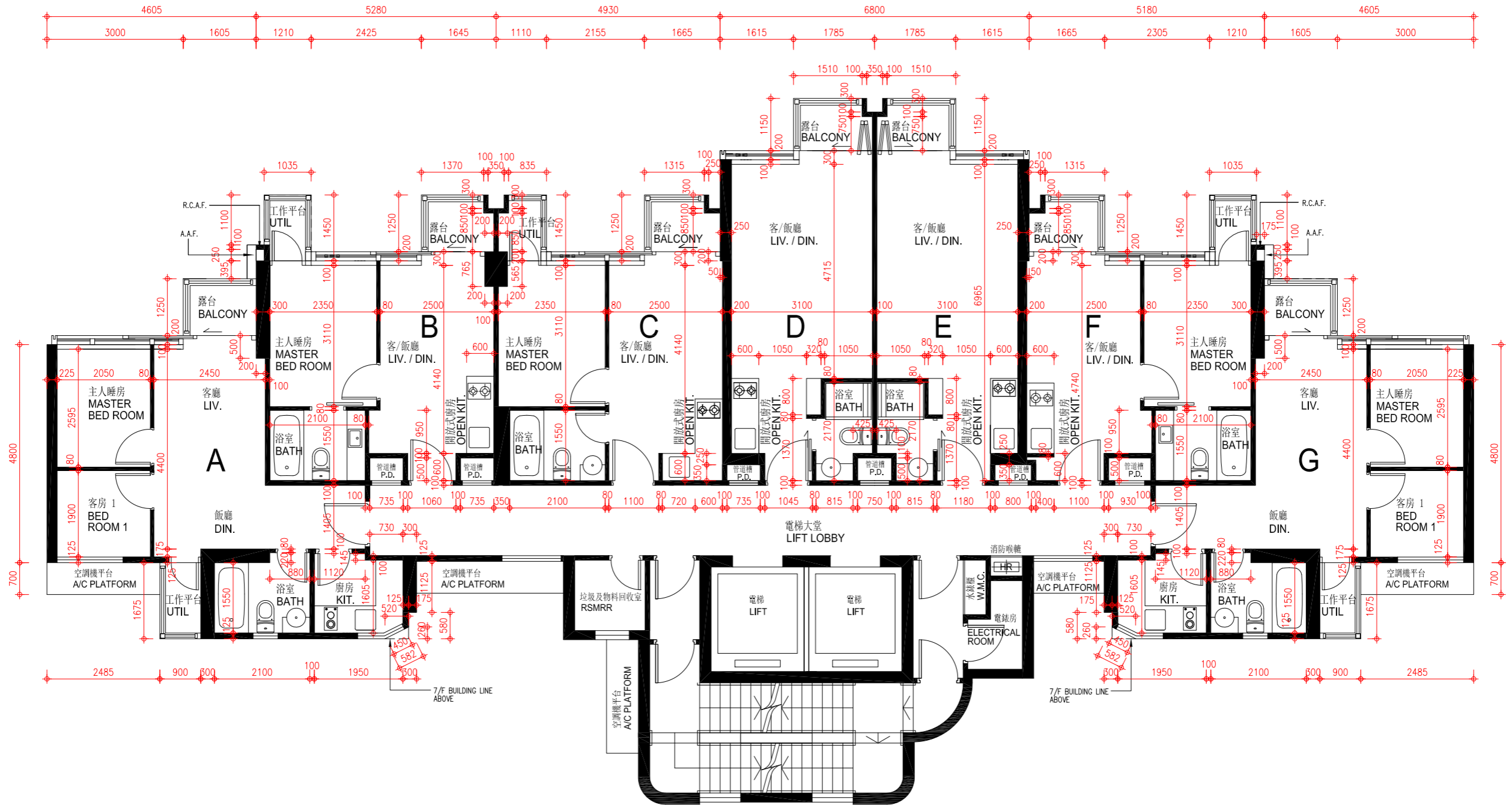
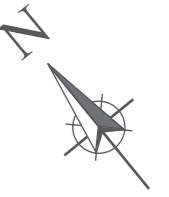
1. 平面圖所列之尺寸數字為以毫米標示之建築尺寸。
2. 外牆設有建築裝飾及/或外露喉管。詳細資料請參考最新批准之建築圖則。
3. 平台及/或外牆設有外露及/或外牆裝飾板內藏之公用喉管。詳細資料請參考最新批准的建築圖則。
4. 部分住宅物業天花有跌級樓板(用以安裝樓上物業之機電設備)。
5. 客/飯廳、睡房、走廊、浴室及/或廚房有假天花以內藏冷氣系統及/或機電設備。
6. 平面圖中顯示之名詞及簡稱請參閱本售樓書第16頁。

Note:

1. The dimensions of floor plans are all structural dimensions in millimeter.
2. There may be architectural features and/or exposed pipes on external walls. For details, please refer to the latest approved building plans.
3. Common pipes exposed and/or enclosed in cladding are located at/adjacent to flat roof and/or external wall. For details, please refer to the latest approved building plans.
4. There are sunken slabs (for mechanical & electrical services of properties above) at some residential properties.
5. There are ceiling bulkheads at living/dining rooms, bedrooms, corridors, bathrooms and/or kitchens enclosing air-conditioning systems and/or mechanical and electrical services.
6. Please refer to page 16 of this sales brochure for legend of the terms and abbreviations shown in the floor plan.

發展項目的住宅物業的樓面平面圖  
FLOOR PLANS OF RESIDENTIAL PROPERTIES IN THE DEVELOPMENT

六樓平面圖 6/F Floor Plan



0米/M  
比例: 5米/M  
Scale:

## 發展項目的住宅物業的樓面平面圖

### FLOOR PLANS OF RESIDENTIAL PROPERTIES IN THE DEVELOPMENT

#### 七樓至十二樓及十五樓至十七樓平面圖 7/F to 12/F and 15/F to 17/F Floor Plan

按發展項目的經批准的建築圖則所規定，發展項目七樓至十二樓及十五樓至十七樓的每個住宅物業的樓板（不包括灰泥）的厚度為：

The thickness of the floor slabs (excluding plaster) of each residential property on 7/F to 12/F and 15/F to 17/F of the Development as provided in the approved building plans is:

單位 Flat	單位（不包括露台及工作平台） Flat (excluding balcony and utility platform)	露台 Balcony	工作平台 Utility Platform
A	150毫米(mm)	150毫米(mm)	150毫米(mm)
B	150毫米(mm)	150毫米(mm)	150毫米(mm)
C	150毫米(mm)	150毫米(mm)	150毫米(mm)
D	150毫米(mm)	150毫米(mm)	-
E	150毫米(mm)	150毫米(mm)	-
F	150毫米(mm)	150毫米(mm)	150毫米(mm)
G	150毫米(mm)	150毫米(mm)	150毫米(mm)

按發展項目的經批准的建築圖則所規定，發展項目七樓至十二樓及十五樓至十七樓每個住宅物業的層與層之間的高度為 3.15 米。

The floor-to-floor height of each residential property on 7/F to 12/F and 15/F to 17/F of the Development as provided in the approved building plans of the Development is 3.15m.

因住宅物業的較高樓層的結構牆的厚度遞減，較高樓層的內部面積，一般比較低樓層的內部面積稍大。

The internal areas of the residential properties on the upper floors will generally be slightly larger than those on the lower floors because of the reducing thickness of the structural walls on the upper floors.

附註：

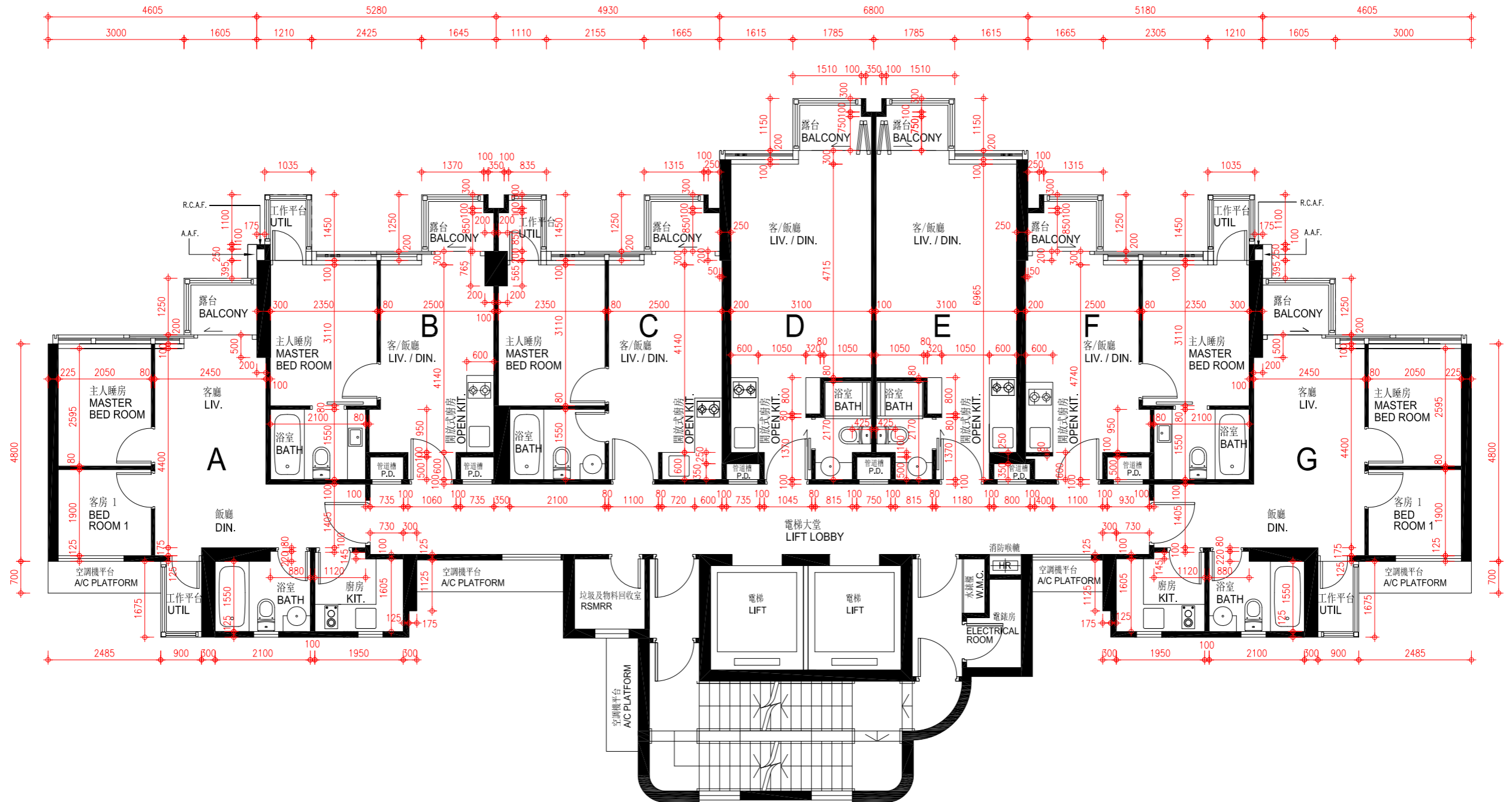
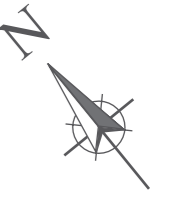
1. 平面圖所列之尺寸數字為以毫米標示之建築尺寸。
2. 外牆設有建築裝飾及/或外露喉管。詳細資料請參考最新批准之建築圖則。
3. 平台及/或外牆設有外露及/或外牆裝飾板內藏之公用喉管。詳細資料請參考最新批准的建築圖則。
4. 部分住宅物業天花有跌級樓板(用以安裝樓上物業之機電設備)。
5. 客/飯廳、睡房、走廊、浴室及/或廚房有假天花以內藏冷氣系統及/或機電設備。
6. 平面圖中顯示之名詞及簡稱請參閱本售樓書第16頁。

Note:

1. The dimensions of floor plans are all structural dimensions in millimeter.
2. There may be architectural features and/or exposed pipes on external walls. For details, please refer to the latest approved building plans.
3. Common pipes exposed and/or enclosed in cladding are located at/adjacent to flat roof and/or external wall. For details, please refer to the latest approved building plans.
4. There are sunken slabs (for mechanical & electrical services of properties above) at some residential properties.
5. There are ceiling bulkheads at living/dining rooms, bedrooms, corridors, bathrooms and/or kitchens enclosing air-conditioning systems and/or mechanical and electrical services.
6. Please refer to page 16 of this sales brochure for legend of the terms and abbreviations shown in the floor plan.

發展項目的住宅物業的樓面平面圖  
 FLOOR PLANS OF RESIDENTIAL PROPERTIES IN THE DEVELOPMENT

七樓至十二樓及十五樓至十七樓平面圖 7/F to 12/F and 15/F to 17/F Floor Plan



0米/M  
 比例: Scale:  
 5米/M

## 發展項目的住宅物業的樓面平面圖 FLOOR PLANS OF RESIDENTIAL PROPERTIES IN THE DEVELOPMENT

### 十八樓至二十三樓及二十五樓至二十六樓平面圖 18/F to 23/F and 25/F to 26/F Floor Plan

按發展項目的經批准的建築圖則所規定，發展項目十八樓至二十三樓及二十五樓的每個住宅物業的樓板（不包括灰泥）的厚度為：

The thickness of the floor slabs (excluding plaster) of each residential property on 18/F to 23/F and 25/F of the Development as provided in the approved building plans is:

單位 Flat	單位（不包括露台及工作平台） Flat (excluding balcony and utility platform)	露台 Balcony	工作平台 Utility Platform
A	150毫米(mm)	150毫米(mm)	150毫米(mm)
B	150毫米(mm)	150毫米(mm)	150毫米(mm)
C	150毫米(mm)	150毫米(mm)	150毫米(mm)
D	150毫米(mm)	150毫米(mm)	-
E	150毫米(mm)	150毫米(mm)	-
F	150毫米(mm)	150毫米(mm)	150毫米(mm)
G	150毫米(mm)	150毫米(mm)	150毫米(mm)

按發展項目的經批准的建築圖則所規定，發展項目十八樓至二十三樓及二十五樓每個住宅物業的層與層之間的高度為 3.15 米。

The floor-to-floor height of each residential property on 18/F to 23/F and 25/F of the Development as provided in the approved building plans of the Development is 3.15m.

因住宅物業的較高樓層的結構牆的厚度遞減，較高樓層的內部面積，一般比較低樓層的內部面積稍大。

The internal areas of the residential properties on the upper floors will generally be slightly larger than those on the lower floors because of the reducing thickness of the structural walls on the upper floors.

附註：

1. 平面圖所列之尺寸數字為以毫米標示之建築尺寸。
2. 外牆設有建築裝飾及/或外露喉管。詳細資料請參考最新批准之建築圖則。
3. 平台及/或外牆設有外露及/或外牆裝飾板內藏之公用喉管。詳細資料請參考最新批准的建築圖則。
4. 部分住宅物業天花有跌級樓板(用以安裝樓上物業之機電設備)。
5. 客/飯廳、睡房、走廊、浴室及/或廚房有假天花以內藏冷氣系統及/或機電設備。
6. 平面圖中顯示之名詞及簡稱請參閱本售樓書第16頁。

Note:

1. The dimensions of floor plans are all structural dimensions in millimeter.
2. There may be architectural features and/or exposed pipes on external walls. For details, please refer to the latest approved building plans.
3. Common pipes exposed and/or enclosed in cladding are located at/adjacent to flat roof and/or external wall. For details, please refer to the latest approved building plans.
4. There are sunken slabs (for mechanical & electrical services of properties above) at some residential properties.
5. There are ceiling bulkheads at living/dining rooms, bedrooms, corridors, bathrooms and/or kitchens enclosing air-conditioning systems and/or mechanical and electrical services.
6. Please refer to page 16 of this sales brochure for legend of the terms and abbreviations shown in the floor plan.

按發展項目的經批准的建築圖則所規定，發展項目二十六樓的每個住宅物業的樓板（不包括灰泥）的厚度為：

The thickness of the floor slabs (excluding plaster) of each residential property on 26/F of the Development as provided in the approved building plans is:

單位 Flat	單位（不包括露台及工作平台） Flat (excluding balcony and utility platform)	露台 Balcony	工作平台 Utility Platform
A	175毫米(mm)	150毫米(mm)	150毫米(mm)
B	150毫米(mm)	150毫米(mm)	150毫米(mm)
C	150毫米(mm)	150毫米(mm)	150毫米(mm)
D	150毫米(mm)	150毫米(mm)	-
E	150毫米(mm)	150毫米(mm)	-
F	150毫米(mm)	150毫米(mm)	150毫米(mm)
G	175毫米(mm)	150毫米(mm)	150毫米(mm)

按發展項目的經批准的建築圖則所規定，發展項目二十六樓每個住宅物業的層與層之間的高度為 3.15 米（除 A 及 G 單位），A 單位為 2.9 米及 3.15 米，G 單位為 2.9 米及 3.15 米。

The floor-to-floor height of each residential property on 26/F of the Development as provided in the approved building plans of the Development are 3.15m (except Flat A & G), Flat A are 2.9m and 3.15m, Flat G are 2.9m and 3.15m.

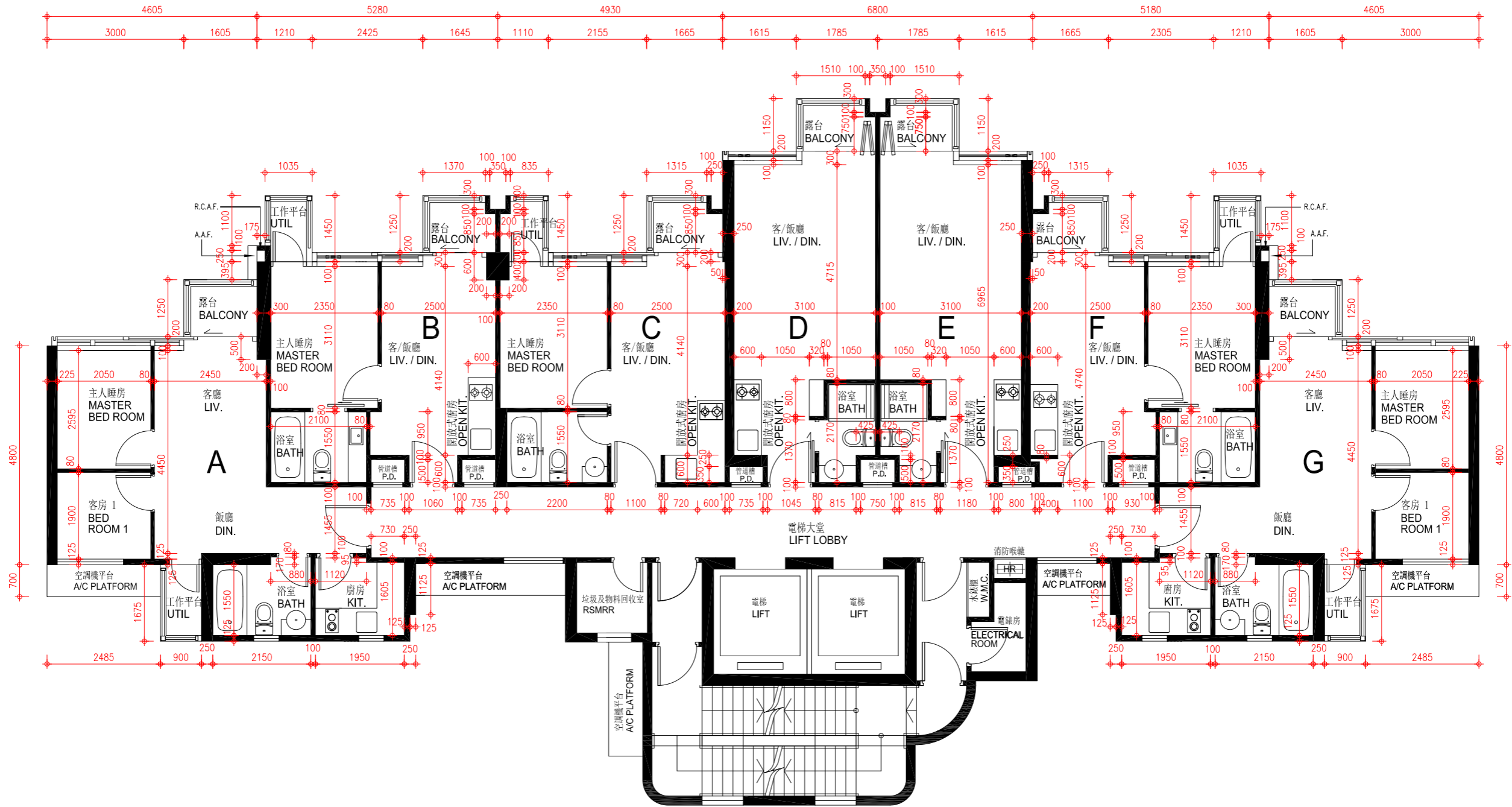
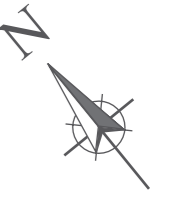
因住宅物業的較高樓層的結構牆的厚度遞減，較高樓層的內部面積，一般比較低樓層的內部面積稍大。

The internal areas of the residential properties on the upper floors will generally be slightly larger than those on the lower floors because of the reducing thickness of the structural walls on the upper floors.



發展項目的住宅物業的樓面平面圖  
FLOOR PLANS OF RESIDENTIAL PROPERTIES IN THE DEVELOPMENT

十八樓至二十三樓及二十五樓至二十六樓平面圖 18/F to 23/F and 25/F to 26/F Floor Plan



0米/M  
比例: Scale:  
5米/M

## 發展項目的住宅物業的樓面平面圖

### FLOOR PLANS OF RESIDENTIAL PROPERTIES IN THE DEVELOPMENT

#### 二十七樓平面圖 27/F Floor Plan

按發展項目的經批准的建築圖則所規定，發展項目二十七樓的每個住宅物業的樓板（不包括灰泥）的厚度為：

The thickness of the floor slabs (excluding plaster) of each residential property on 27/F of the Development as provided in the approved building plans is:

單位 Flat	單位（不包括露台及工作平台） Flat (excluding balcony and utility platform)	露台 Balcony	工作平台 Utility Platform
A	150毫米(mm)	150毫米(mm)	150毫米(mm)
B	150毫米(mm)	150毫米(mm)	150毫米(mm)
C	150毫米(mm)	150毫米(mm)	150毫米(mm)
D	150毫米(mm)	150毫米(mm)	-
E	150毫米(mm)	150毫米(mm)	-
F	150毫米(mm)	150毫米(mm)	150毫米(mm)
G	150毫米(mm)	150毫米(mm)	150毫米(mm)

按發展項目的經批准的建築圖則所規定，發展項目二十七樓每個住宅物業的層與層之間的高度為 3.15 米。

The floor-to-floor height of each residential property on 27/F of the Development as provided in the approved building plans of the Development is 3.15m.

因住宅物業的較高樓層的結構牆的厚度遞減，較高樓層的內部面積，一般比較低樓層的內部面積稍大。

The internal areas of the residential properties on the upper floors will generally be slightly larger than those on the lower floors because of the reducing thickness of the structural walls on the upper floors.

附註：

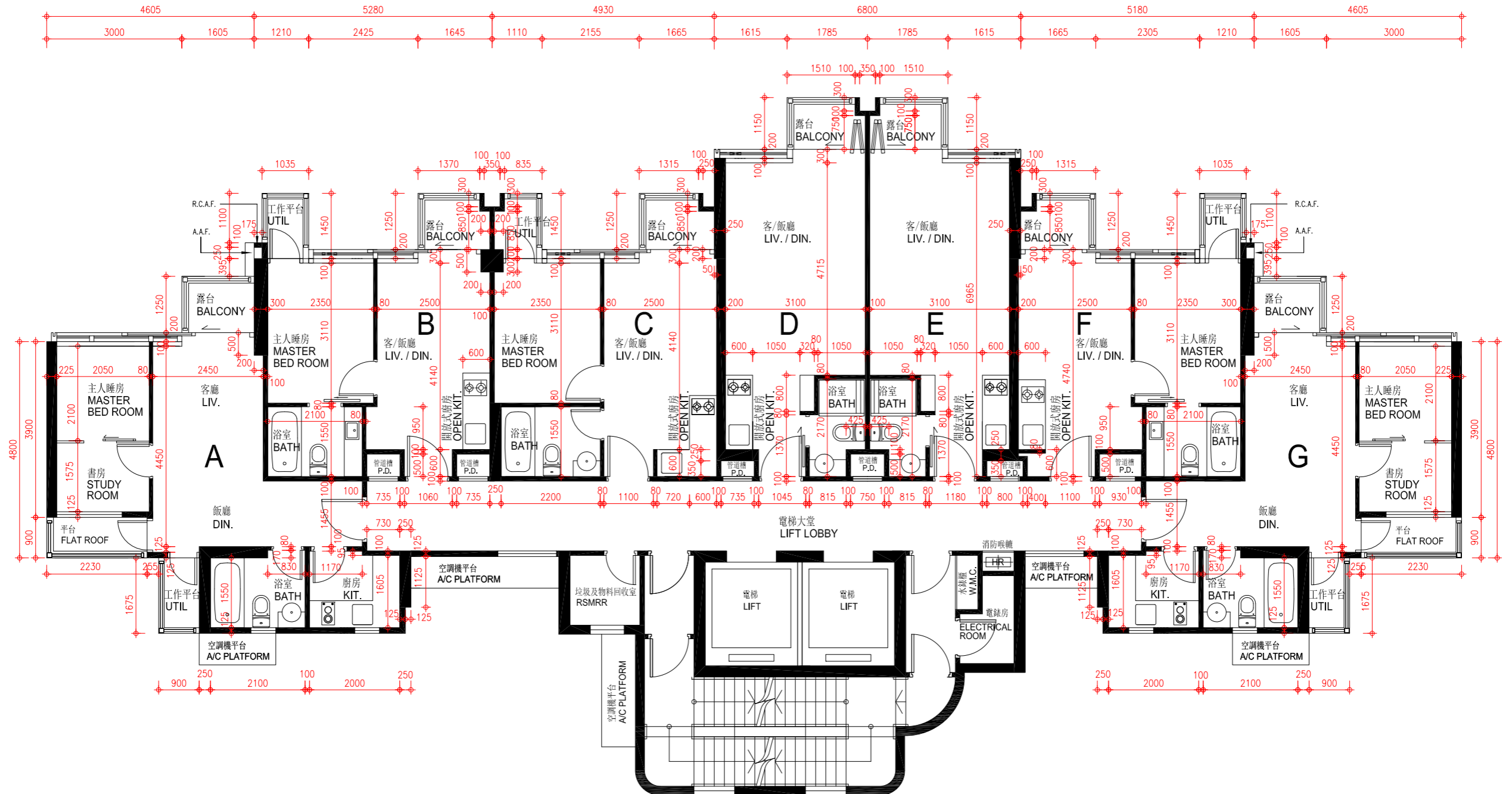
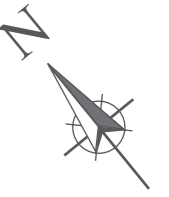
1. 平面圖所列之尺寸數字為以毫米標示之建築尺寸。
2. 外牆設有建築裝飾及/或外露喉管。詳細資料請參考最新批准之建築圖則。
3. 平台及/或外牆設有外露及/或外牆裝飾板內藏之公用喉管。詳細資料請參考最新批准的建築圖則。
4. 部分住宅物業天花有跌級樓板(用以安裝樓上物業之機電設備)。
5. 客/飯廳、睡房、走廊、浴室及/或廚房有假天花以內藏冷氣系統及/或機電設備。
6. 平面圖中顯示之名詞及簡稱請參閱本售樓書第16頁。

Note:

1. The dimensions of floor plans are all structural dimensions in millimeter.
2. There may be architectural features and/or exposed pipes on external walls. For details, please refer to the latest approved building plans.
3. Common pipes exposed and/or enclosed in cladding are located at/adjacent to flat roof and/or external wall. For details, please refer to the latest approved building plans.
4. There are sunken slabs (for mechanical & electrical services of properties above) at some residential properties.
5. There are ceiling bulkheads at living/dining rooms, bedrooms, corridors, bathrooms and/or kitchens enclosing air-conditioning systems and/or mechanical and electrical services.
6. Please refer to page 16 of this sales brochure for legend of the terms and abbreviations shown in the floor plan.

發展項目的住宅物業的樓面平面圖  
FLOOR PLANS OF RESIDENTIAL PROPERTIES IN THE DEVELOPMENT

二十七樓平面圖 27/F Floor Plan



0米/M  
比例: Scale:  
5米/M

## 發展項目的住宅物業的樓面平面圖

### FLOOR PLANS OF RESIDENTIAL PROPERTIES IN THE DEVELOPMENT

#### 二十八樓平面圖 28/F Floor Plan

按發展項目的經批准的建築圖則所規定，發展項目二十八樓的每個住宅物業的樓板（不包括灰泥）的厚度為：

The thickness of the floor slabs (excluding plaster) of each residential property on 28/F of the Development as provided in the approved building plans is:

單位 Flat	單位（不包括露台及工作平台） Flat (excluding balcony and utility platform)	露台 Balcony	工作平台 Utility Platform
A	150毫米(mm)	150毫米(mm)	150毫米(mm)
B	150毫米(mm)	150毫米(mm)	150毫米(mm)
C	150毫米(mm)	150毫米(mm)	150毫米(mm)
D	150毫米(mm)	150毫米(mm)	-
E	150毫米(mm)	150毫米(mm)	-
F	150毫米(mm)	150毫米(mm)	150毫米(mm)
G	150毫米(mm)	150毫米(mm)	150毫米(mm)

按發展項目的經批准的建築圖則所規定，發展項目二十八樓每個住宅物業的層與層之間的高度為3.15米（除A、B、F及G單位），A單位為2.9米及3.15米，B單位為2.9米及3.15米，F單位為2.9米及3.15米，G單位為2.9米及3.15米。

The floor-to-floor height of each residential property on 28/F of the Development as provided in the approved building plans of the Development are 3.15m (except Flat A, B, F & G), Flat A are 2.9m and 3.15m, Flat B are 2.9m and 3.15m, Flat F are 2.9m and 3.15m, Flat G are 2.9m and 3.15m.

因住宅物業的較高樓層的結構牆的厚度遞減，較高樓層的內部面積，一般比較低樓層的內部面積稍大。

The internal areas of the residential properties on the upper floors will generally be slightly larger than those on the lower floors because of the reducing thickness of the structural walls on the upper floors.

附註：

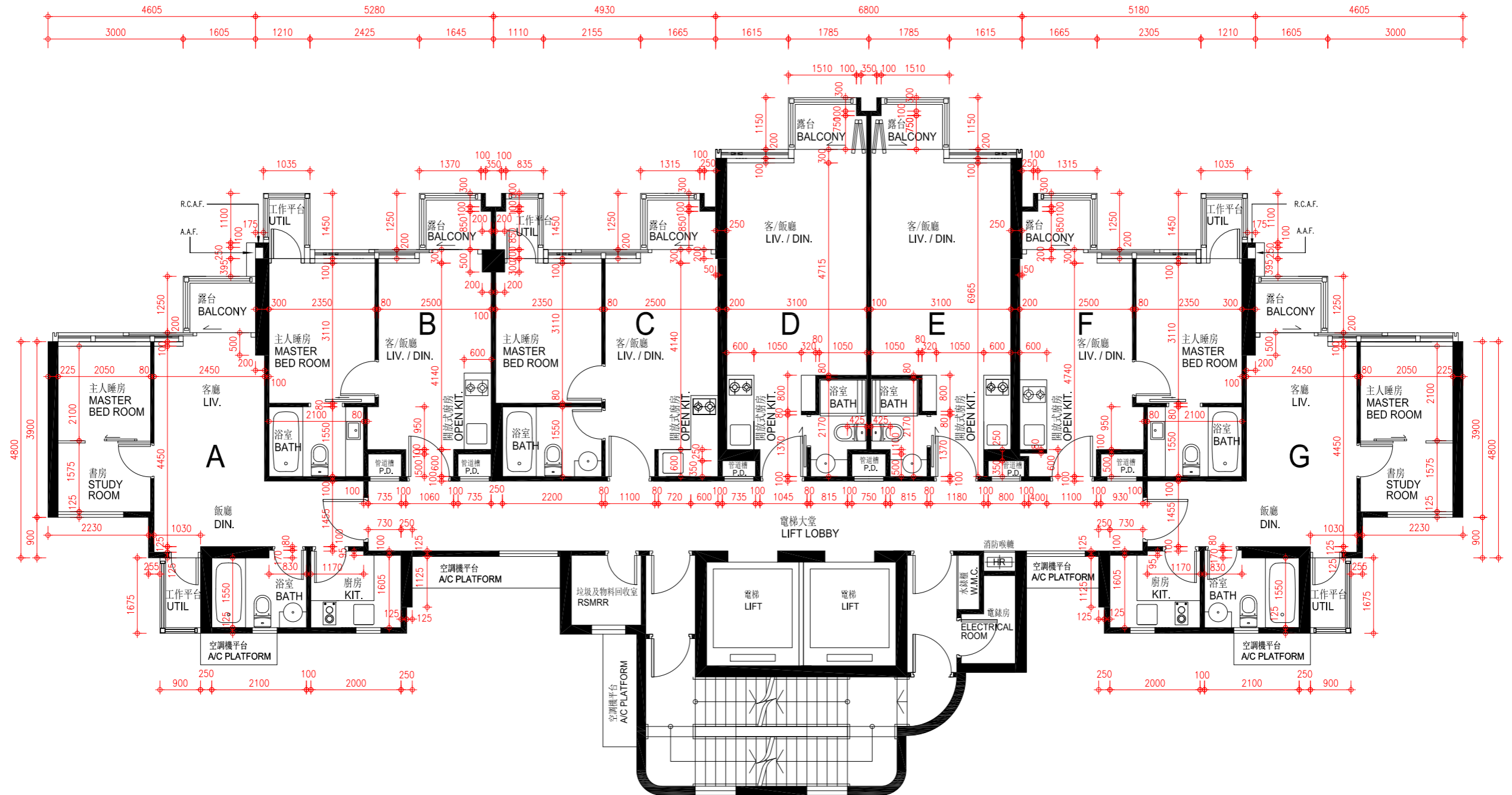
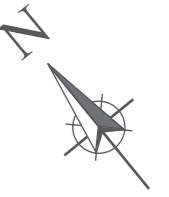
1. 平面圖所列之尺寸數字為以毫米標示之建築尺寸。
2. 外牆設有建築裝飾及/或外露喉管。詳細資料請參考最新批准之建築圖則。
3. 平台及/或外牆設有外露及/或外牆裝飾板內藏之公用喉管。詳細資料請參考最新批准的建築圖則。
4. 部分住宅物業天花有跌級樓板(用以安裝樓上物業之機電設備)。
5. 客/飯廳、睡房、走廊、浴室及/或廚房有假天花以內藏冷氣系統及/或機電設備。
6. 平面圖中顯示之名詞及簡稱請參閱本售樓書第16頁。

Note:

1. The dimensions of floor plans are all structural dimensions in millimeter.
2. There may be architectural features and/or exposed pipes on external walls. For details, please refer to the latest approved building plans.
3. Common pipes exposed and/or enclosed in cladding are located at/adjacent to flat roof and/or external wall. For details, please refer to the latest approved building plans.
4. There are sunken slabs (for mechanical & electrical services of properties above) at some residential properties.
5. There are ceiling bulkheads at living/dining rooms, bedrooms, corridors, bathrooms and/or kitchens enclosing air-conditioning systems and/or mechanical and electrical services.
6. Please refer to page 16 of this sales brochure for legend of the terms and abbreviations shown in the floor plan.

發展項目的住宅物業的樓面平面圖  
 FLOOR PLANS OF RESIDENTIAL PROPERTIES IN THE DEVELOPMENT

二十八樓平面圖 28/F Floor Plan



0米/M  
 比例: Scale:  
 5米/M

## 發展項目的住宅物業的樓面平面圖

### FLOOR PLANS OF RESIDENTIAL PROPERTIES IN THE DEVELOPMENT

#### 二十九樓平面圖 29/F Floor Plan

按發展項目的經批准的建築圖則所規定，發展項目二十九樓的每個住宅物業的樓板（不包括灰泥）的厚度為：

The thickness of the floor slabs (excluding plaster) of each residential property on 29/F of the Development as provided in the approved building plans is:

單位 Flat	單位（不包括露台及工作平台） Flat (excluding balcony and utility platform)	露台 Balcony	工作平台 Utility Platform
A	150毫米(mm)	-	150毫米(mm)
B	150毫米(mm)	150毫米(mm)	150毫米(mm)
C	150毫米(mm)	150毫米(mm)	-
D	150毫米(mm)	150毫米(mm)	-
E	150毫米(mm)	-	150毫米(mm)

按發展項目的經批准的建築圖則所規定，發展項目二十九樓每個住宅物業的層與層之間的高度為 3.15 米。

The floor-to-floor height of each residential property on 29/F of the Development as provided in the approved building plans of the Development is 3.15m.

因住宅物業的較高樓層的結構牆的厚度遞減，較高樓層的內部面積，一般比較低樓層的內部面積稍大。

The internal areas of the residential properties on the upper floors will generally be slightly larger than those on the lower floors because of the reducing thickness of the structural walls on the upper floors.

附註：

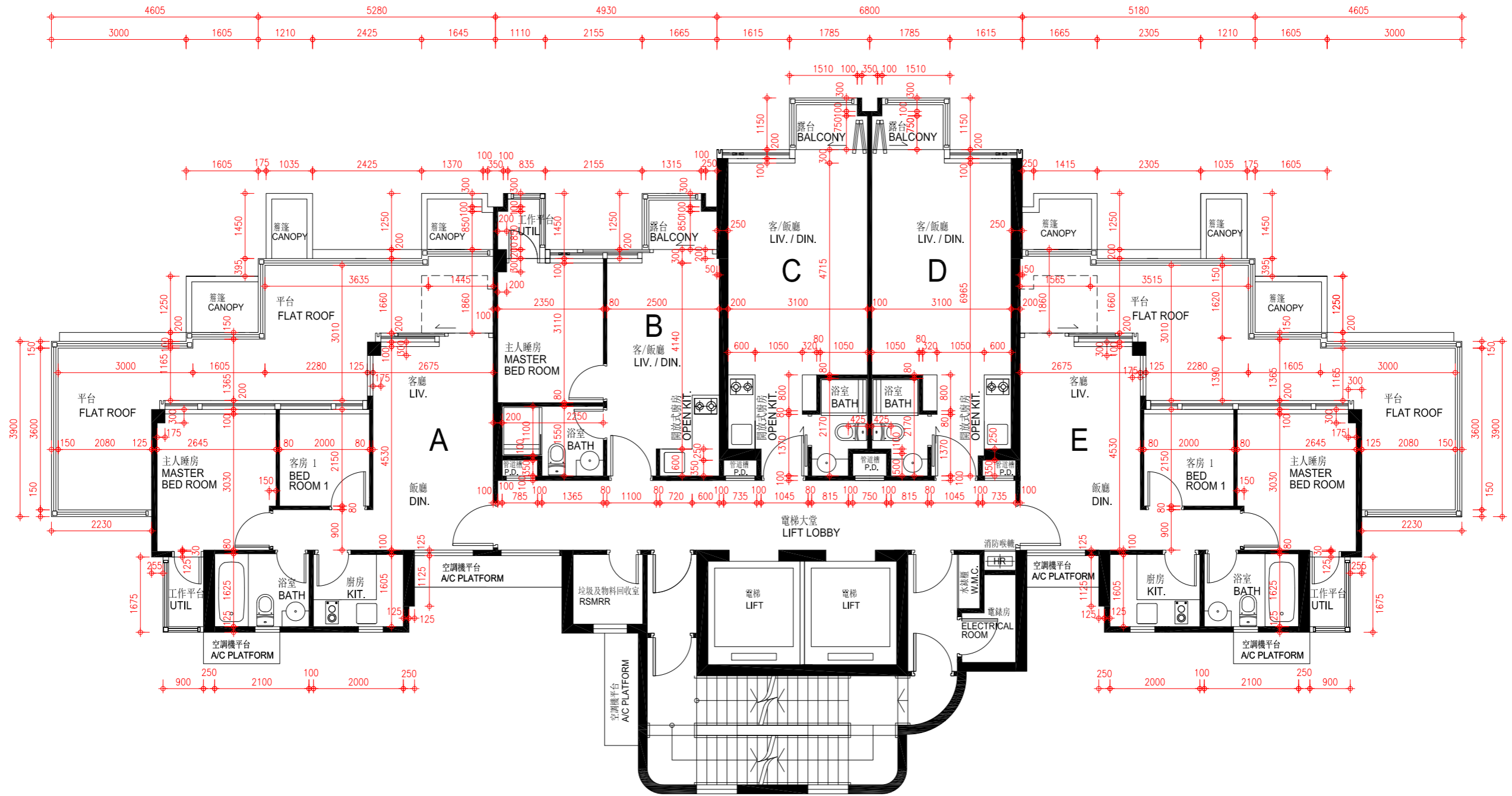
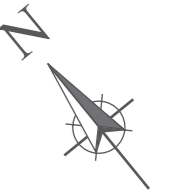
1. 平面圖所列之尺寸數字為以毫米標示之建築尺寸。
2. 外牆設有建築裝飾及/或外露喉管。詳細資料請參考最新批准之建築圖則。
3. 平台及/或外牆設有外露及/或外牆裝飾板內藏之公用喉管。詳細資料請參考最新批准的建築圖則。
4. 部分住宅物業天花有跌級樓板(用以安裝樓上物業之機電設備)。
5. 客/飯廳、睡房、走廊、浴室及/或廚房有假天花以內藏冷氣系統及/或機電設備。
6. 平面圖中顯示之名詞及簡稱請參閱本售樓書第16頁。

Note:

1. The dimensions of floor plans are all structural dimensions in millimeter.
2. There may be architectural features and/or exposed pipes on external walls. For details, please refer to the latest approved building plans.
3. Common pipes exposed and/or enclosed in cladding are located at/adjacent to flat roof and/or external wall. For details, please refer to the latest approved building plans.
4. There are sunken slabs (for mechanical & electrical services of properties above) at some residential properties.
5. There are ceiling bulkheads at living/dining rooms, bedrooms, corridors, bathrooms and/or kitchens enclosing air-conditioning systems and/or mechanical and electrical services.
6. Please refer to page 16 of this sales brochure for legend of the terms and abbreviations shown in the floor plan.

發展項目的住宅物業的樓面平面圖  
 FLOOR PLANS OF RESIDENTIAL PROPERTIES IN THE DEVELOPMENT

二十九樓平面圖 29/F Floor Plan



0米/M  
 比例: Scale:  
 5米/M

## 發展項目的住宅物業的樓面平面圖

### FLOOR PLANS OF RESIDENTIAL PROPERTIES IN THE DEVELOPMENT

#### 三十樓平面圖 30/F Floor Plan

按發展項目的經批准的建築圖則所規定，發展項目三十樓的每個住宅物業的樓板（不包括灰泥）的厚度為：

The thickness of the floor slabs (excluding plaster) of each residential property on 30/F of the Development as provided in the approved building plans is:

單位 Flat	單位（不包括露台及工作平台） Flat (excluding balcony and utility platform)	露台 Balcony	工作平台 Utility Platform
A	150毫米(mm)	150毫米(mm)	150毫米(mm)
B	150毫米(mm)	150毫米(mm)	150毫米(mm)
C	150毫米(mm)	150毫米(mm)	-
D	150毫米(mm)	150毫米(mm)	-
E	150毫米(mm)	150毫米(mm)	150毫米(mm)

按發展項目的經批准的建築圖則所規定，發展項目三十樓每個住宅物業的層與層之間的高度為 3.25 米。

The floor-to-floor height of each residential property on 30/F of the Development as provided in the approved building plans of the Development is 3.25m.

因住宅物業的較高樓層的結構牆的厚度遞減，較高樓層的內部面積，一般比較低樓層的內部面積稍大。

The internal areas of the residential properties on the upper floors will generally be slightly larger than those on the lower floors because of the reducing thickness of the structural walls on the upper floors.

附註：

1. 平面圖所列之尺寸數字為以毫米標示之建築尺寸。
2. 外牆設有建築裝飾及/或外露喉管。詳細資料請參考最新批准之建築圖則。
3. 平台及/或外牆設有外露及/或外牆裝飾板內藏之公用喉管。詳細資料請參考最新批准的建築圖則。
4. 部分住宅物業天花有跌級樓板(用以安裝樓上物業之機電設備)。
5. 客/飯廳、睡房、走廊、浴室及/或廚房有假天花以內藏冷氣系統及/或機電設備。
6. 平面圖中顯示之名詞及簡稱請參閱本售樓書第16頁。

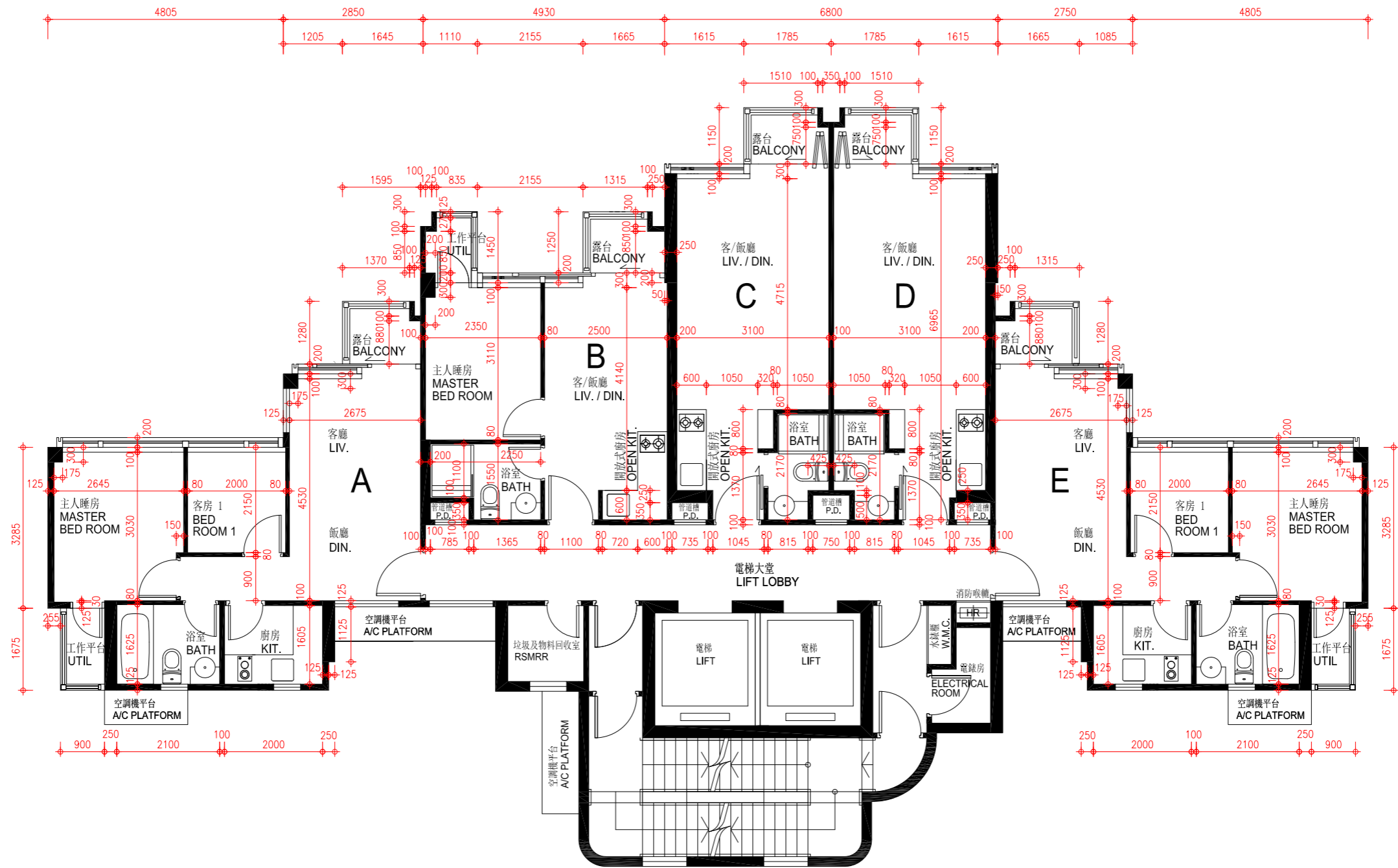
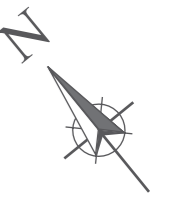
Note:

1. The dimensions of floor plans are all structural dimensions in millimeter.
2. There may be architectural features and/or exposed pipes on external walls. For details, please refer to the latest approved building plans.
3. Common pipes exposed and/or enclosed in cladding are located at/adjacent to flat roof and/or external wall. For details, please refer to the latest approved building plans.
4. There are sunken slabs (for mechanical & electrical services of properties above) at some residential properties.
5. There are ceiling bulkheads at living/dining rooms, bedrooms, corridors, bathrooms and/or kitchens enclosing air-conditioning systems and/or mechanical and electrical services.
6. Please refer to page 16 of this sales brochure for legend of the terms and abbreviations shown in the floor plan.



發展項目的住宅物業的樓面平面圖  
 FLOOR PLANS OF RESIDENTIAL PROPERTIES IN THE DEVELOPMENT

三十樓平面圖 30/F Floor Plan



0米/M  
 比例: 5米/M  
 Scale:

## 發展項目的住宅物業的樓面平面圖

### FLOOR PLANS OF RESIDENTIAL PROPERTIES IN THE DEVELOPMENT

#### 天台平面圖 Roof Floor Plan

按發展項目的經批准的建築圖則所規定，發展項目天台的每個住宅物業的樓板（不包括灰泥）的厚度為：不適用

The thickness of the floor slabs (excluding plaster) of each residential property on Roof of the Development as provided in the approved building plans is: Not Applicable

按發展項目的經批准的建築圖則所規定，發展項目天台每個住宅物業的層與層之間的高度為：不適用

The floor-to-floor height of each residential property on Roof of the Development as provided in the approved building plans of the Development is: Not Applicable

因住宅物業的較高樓層的結構牆的厚度遞減，較高樓層的內部面積，一般比較低樓層的內部面積稍大。

The internal areas of the residential properties on the upper floors will generally be slightly larger than those on the lower floors because of the reducing thickness of the structural walls on the upper floors.

#### 附註：

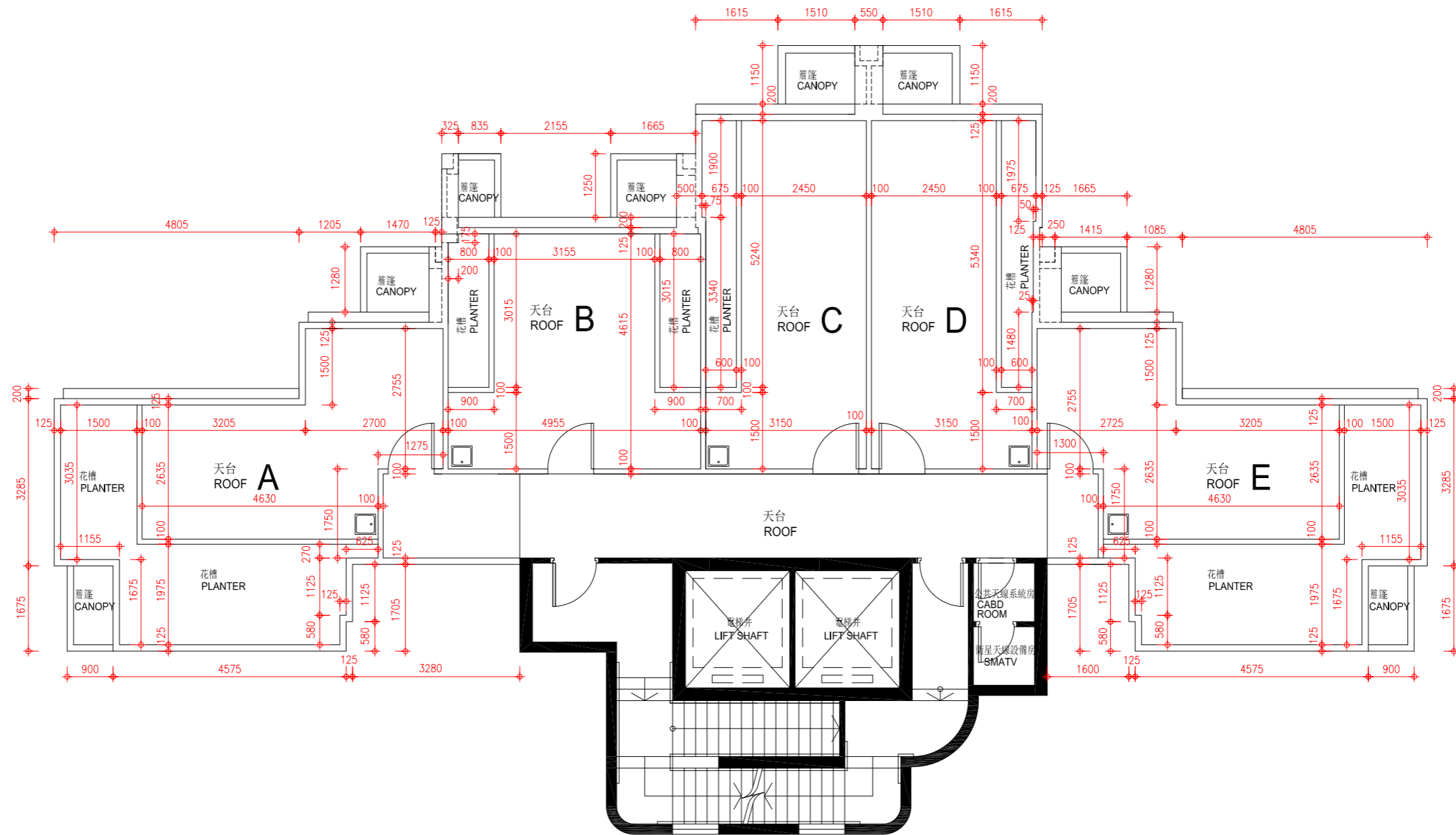
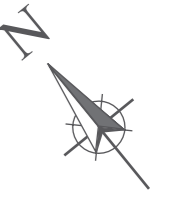
1. 平面圖所列之尺寸數字為以毫米標示之建築尺寸。
2. 外牆設有建築裝飾及/或外露喉管。詳細資料請參考最新批准之建築圖則。
3. 平台及/或外牆設有外露及/或外牆裝飾板內藏之公用喉管。詳細資料請參考最新批准的建築圖則。
4. 部分住宅物業天花有跌級樓板(用以安裝樓上物業之機電設備)。
5. 客/飯廳、睡房、走廊、浴室及/或廚房有假天花以內藏冷氣系統及/或機電設備。
6. 平面圖中顯示之名詞及簡稱請參閱本售樓書第16頁。

#### Note:

1. The dimensions of floor plans are all structural dimensions in millimeter.
2. There may be architectural features and/or exposed pipes on external walls. For details, please refer to the latest approved building plans.
3. Common pipes exposed and/or enclosed in cladding are located at/adjacent to flat roof and/or external wall. For details, please refer to the latest approved building plans.
4. There are sunken slabs (for mechanical & electrical services of properties above) at some residential properties.
5. There are ceiling bulkheads at living/dining rooms, bedrooms, corridors, bathrooms and/or kitchens enclosing air-conditioning systems and/or mechanical and electrical services.
6. Please refer to page 16 of this sales brochure for legend of the terms and abbreviations shown in the floor plan.

發展項目的住宅物業的樓面平面圖  
 FLOOR PLANS OF RESIDENTIAL PROPERTIES IN THE DEVELOPMENT

天台平面圖 Roof Floor Plan



0米/M  
 比例: 5米/M  
 Scale: