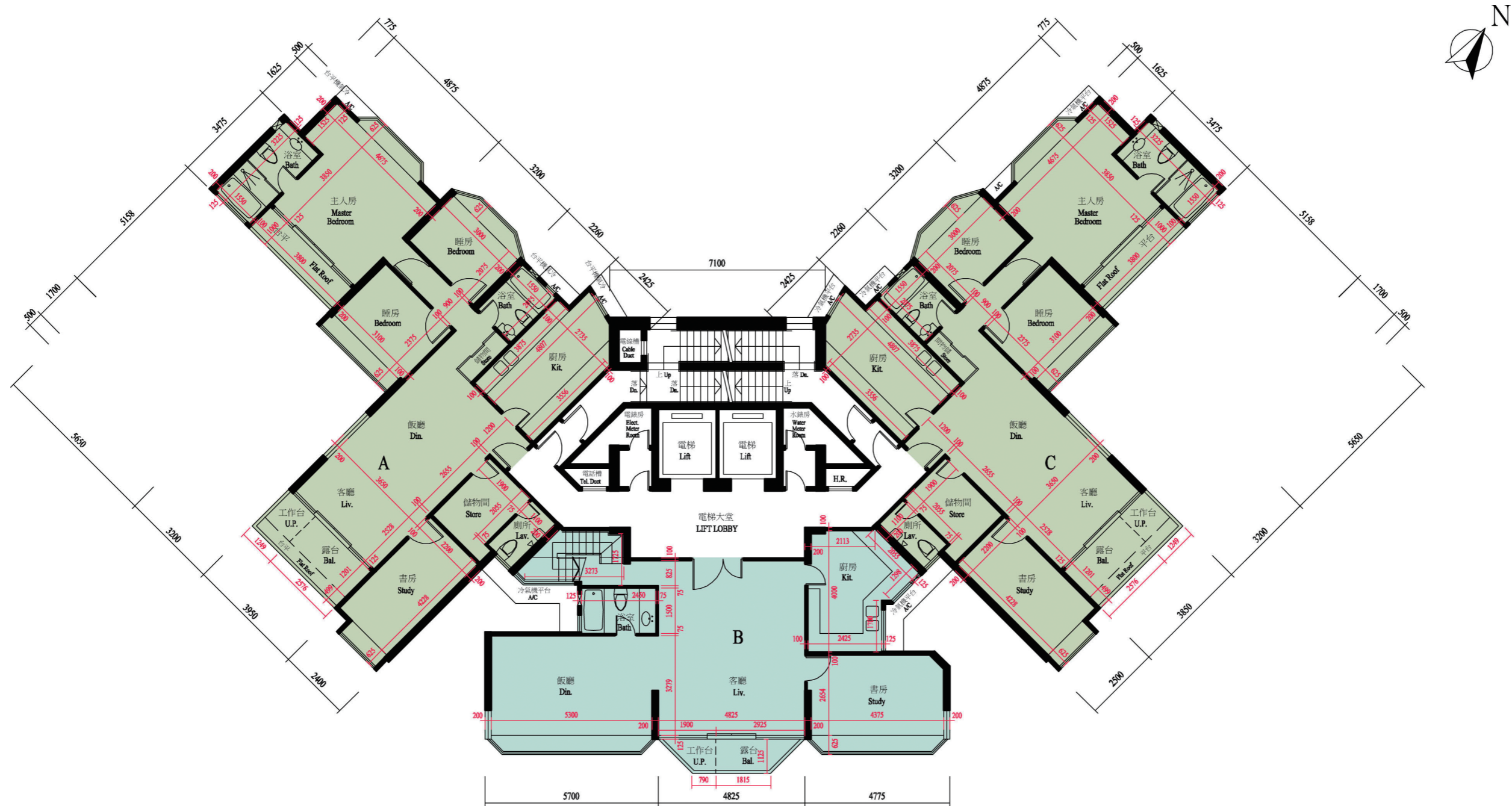


發展項目期數的住宅物業樓面平面圖
 FLOOR PLANS OF RESIDENTIAL PROPERTIES IN THE PHASE OF THE DEVELOPMENT

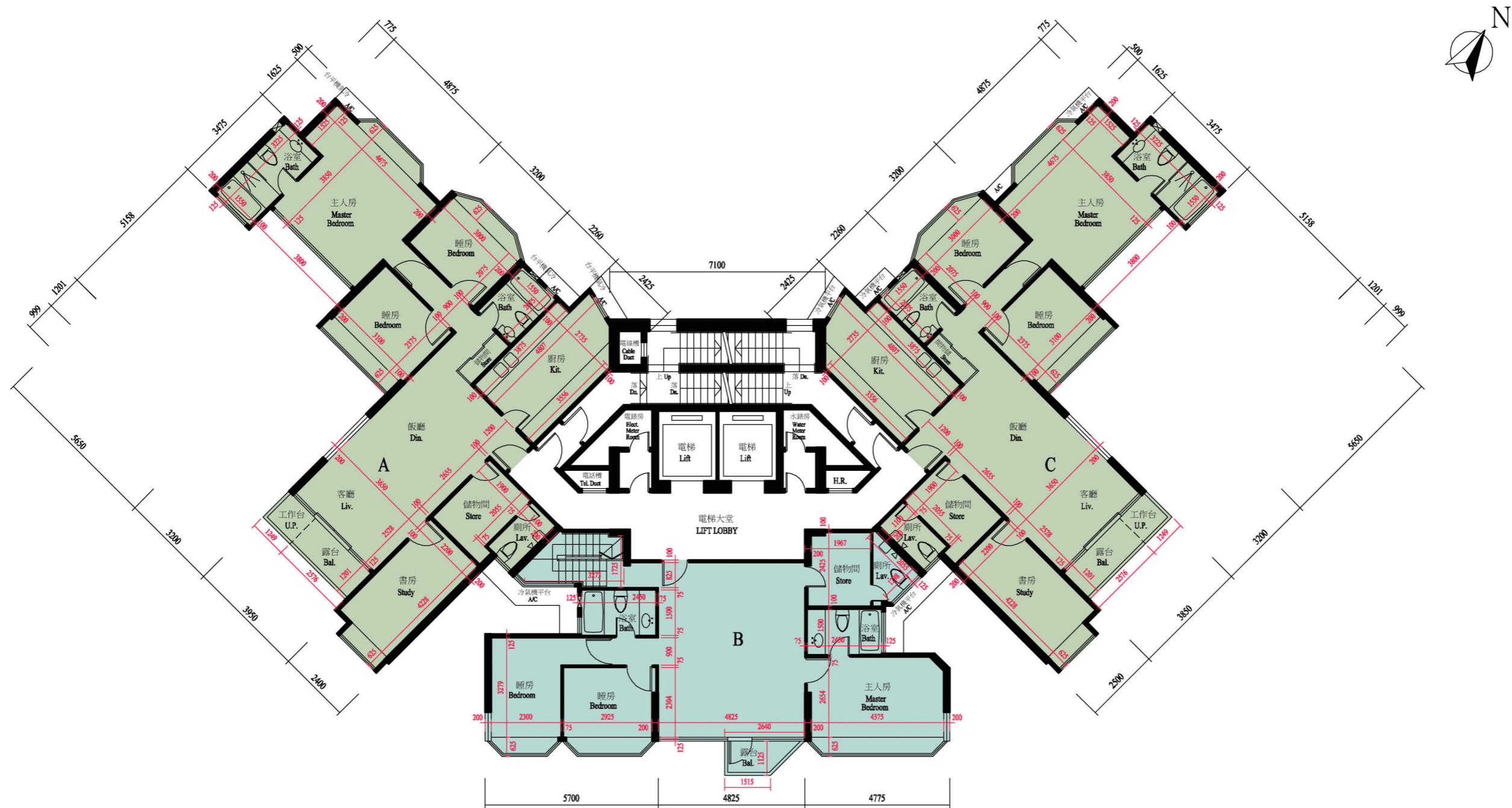


十二樓平面圖
 12TH FLOOR PLAN

十二樓住宅單位的樓板(不包括灰泥)的厚度為125毫米
 十二樓住宅單位的層與層之間的高度為3.15米
 因住宅物業的較高樓層的結構牆的厚度遞減,較高樓層的內部面積,一般比較低樓層的內部面積稍大

The thickness of the floor slabs (excluding plaster) of 12/F residential is 125 mm
 Floor-to-floor height of 12/F residential is 3.15 m
 The internal areas of the residential properties on the upper floor will generally be slightly larger than those on the lower floors because of the reducing thickness of the structural walls on the upper floors

發展項目期數的住宅物業樓面平面圖
FLOOR PLANS OF RESIDENTIAL PROPERTIES IN THE PHASE OF THE DEVELOPMENT

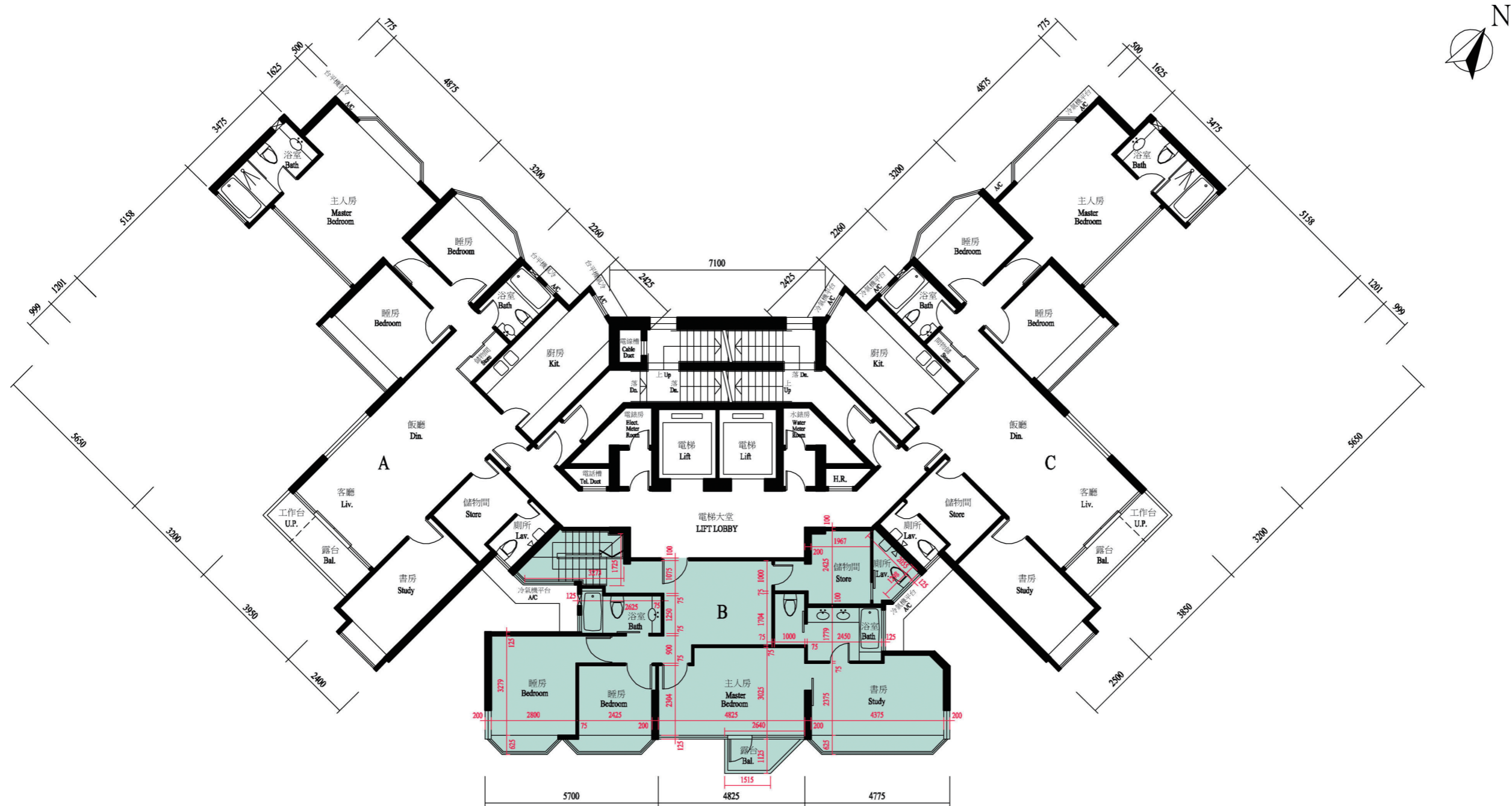


十三樓及十七樓平面圖
13TH & 17TH FLOOR PLAN

十三樓及十七樓住宅單位的樓板(不包括灰泥)的厚度為125毫米
十三樓及十七樓住宅單位的層與層之間的高度為3.15米
因住宅物業的較高樓層的結構牆的厚度遞減,較高樓層的內部面積,一般比較低樓層的內部面積稍大

The thickness of the floor slabs (excluding plaster) of 13/F & 17/F residential is 125 mm
Floor-to-floor height of 13/F & 17/F residential is 3.15 m
The internal areas of the residential properties on the upper floor will generally be slightly larger than those on the lower floors because of the reducing thickness of the structural walls on the upper floors

發展項目期數的住宅物業樓面平面圖
FLOOR PLANS OF RESIDENTIAL PROPERTIES IN THE PHASE OF THE DEVELOPMENT

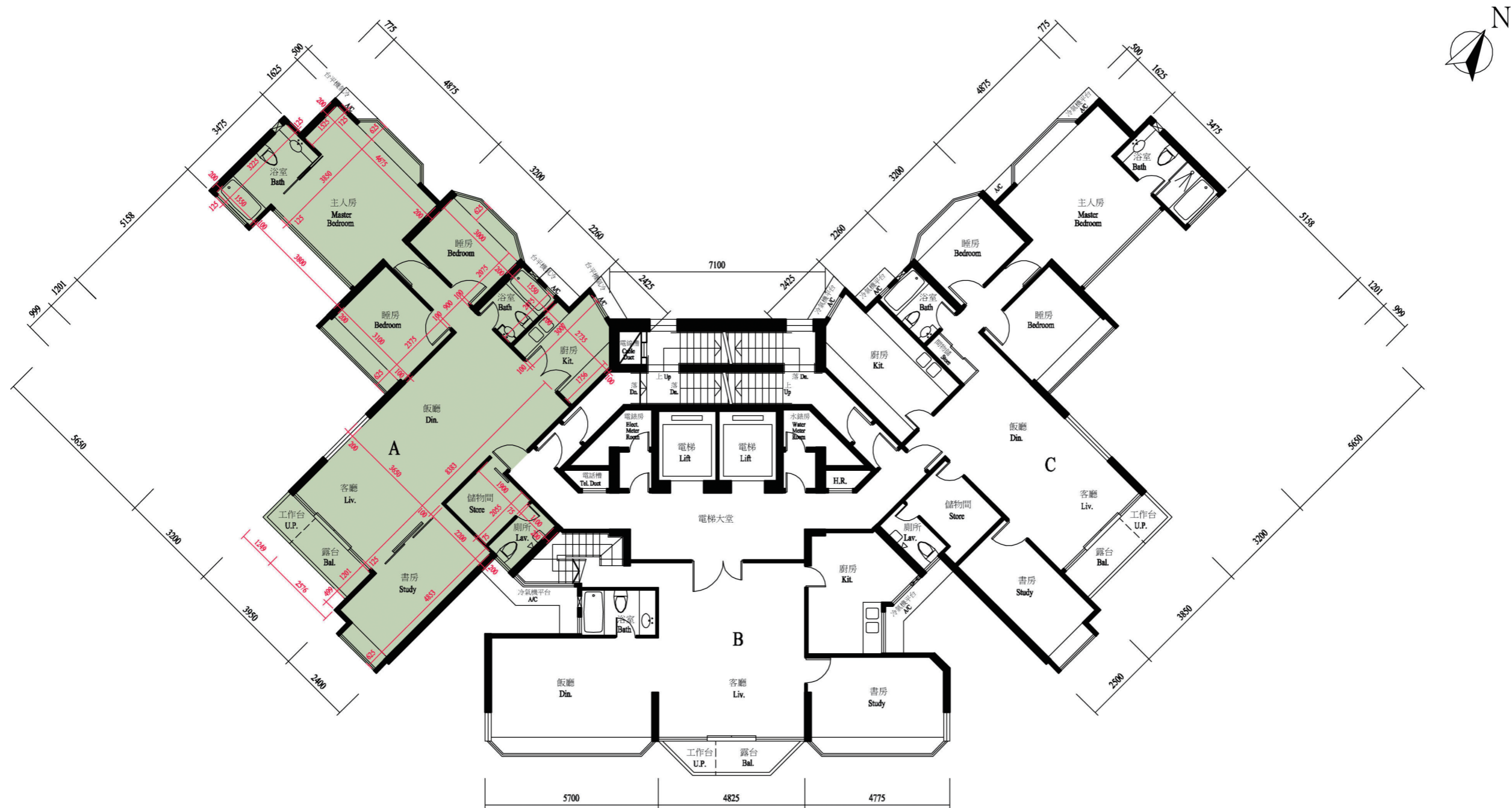


十五樓平面圖
15TH FLOOR PLAN

十五樓住宅單位的樓板(不包括灰泥)的厚度為125毫米
十五樓住宅單位的層與層之間的高度為3.15米
因住宅物業的較高樓層的結構牆的厚度遞減,較高樓層的內部面積,一般比較低樓層的內部面積稍大

The thickness of the floor slabs (excluding plaster) of 15/F residential is 125 mm
Floor-to-floor height of 15/F residential is 3.15 m
The internal areas of the residential properties on the upper floor will generally be slightly larger than those on the lower floors because of the reducing thickness of the structural walls on the upper floors

發展項目期數的住宅物業樓面平面圖
FLOOR PLANS OF RESIDENTIAL PROPERTIES IN THE PHASE OF THE DEVELOPMENT

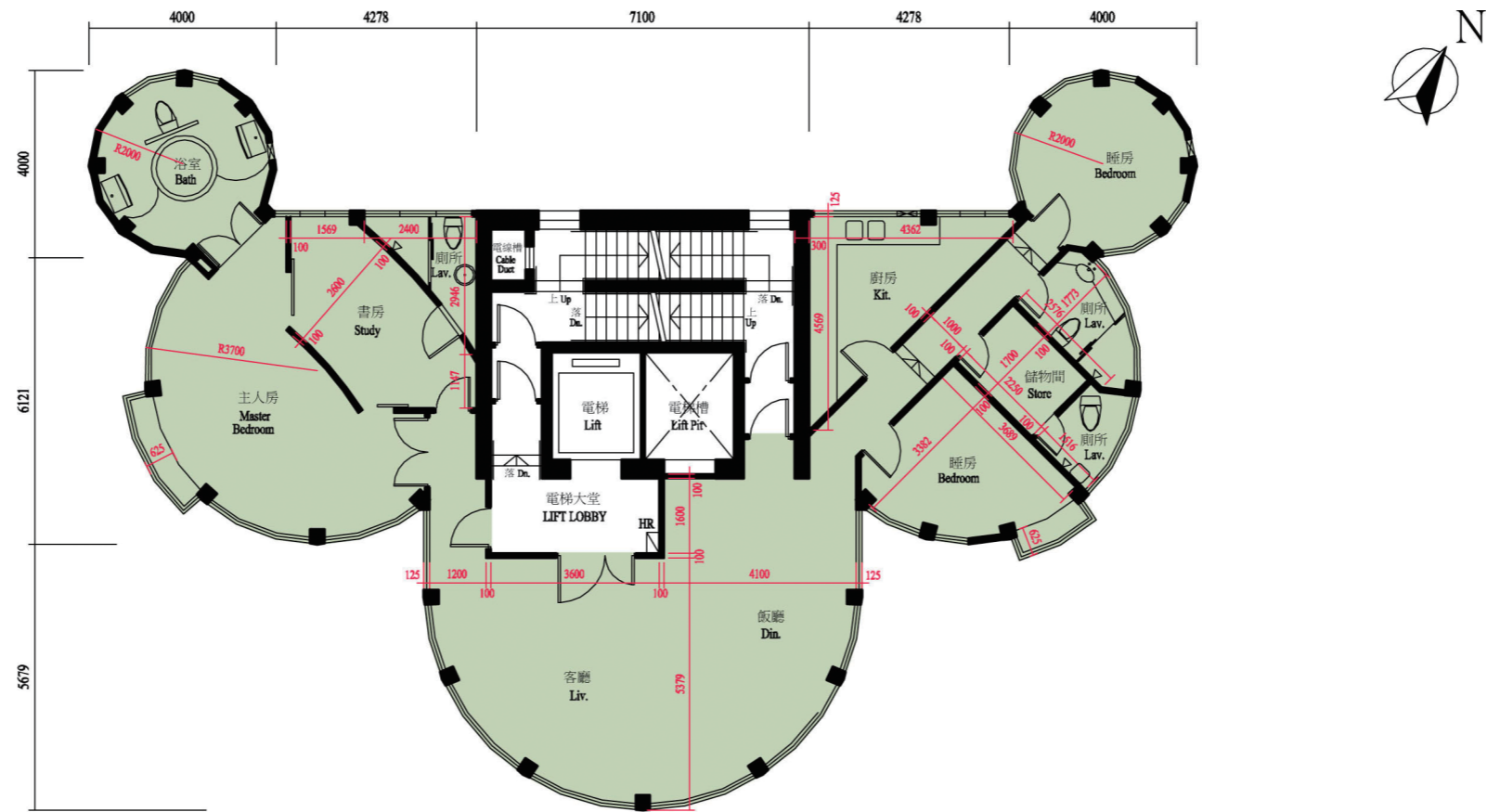


十六樓平面圖
16TH FLOOR PLAN

十六樓住宅單位的樓板(不包括灰泥)的厚度為125毫米
十六樓住宅單位的層與層之間的高度為3.15米
因住宅物業的較高樓層的結構牆的厚度遞減,較高樓層的內部面積,一般比較低樓層的內部面積稍大

The thickness of the floor slabs (excluding plaster) of 16/F residential is 125 mm
Floor-to-floor height of 16/F residential is 3.15 m
The internal areas of the residential properties on the upper floor will generally be slightly larger than those on the lower floors because of the reducing thickness of the structural walls on the upper floors

發展項目期數的住宅物業樓面平面圖
FLOOR PLANS OF RESIDENTIAL PROPERTIES IN THE PHASE OF THE DEVELOPMENT

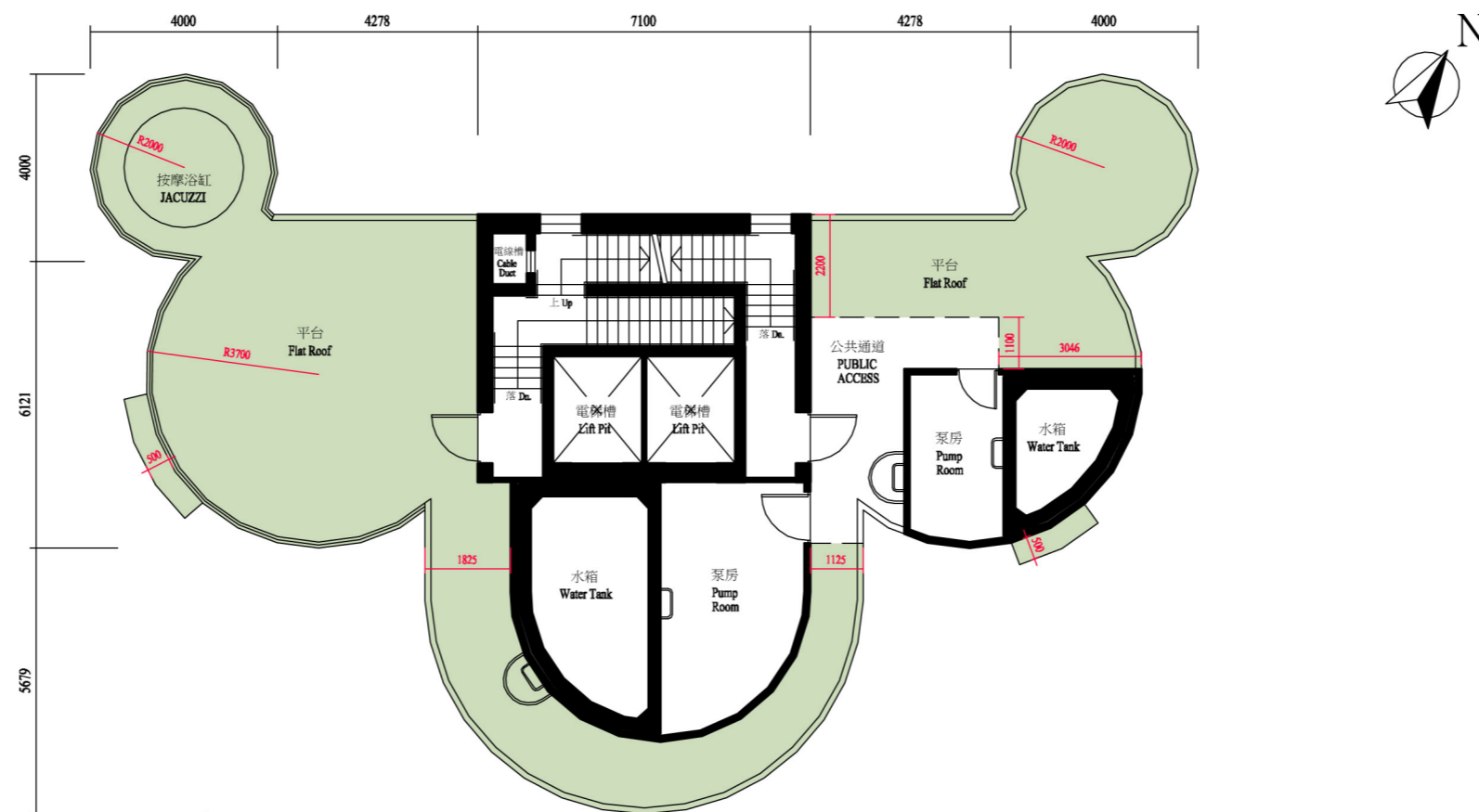


十九樓平面圖
19TH FLOOR PLAN

十九樓住宅單位的樓板(不包括灰泥)的厚度為125毫米
十九樓住宅單位的層與層之間的高度為3.15米
因住宅物業的較高樓層的結構牆的厚度遞減,較高樓層的內部面積,一般比較低樓層的內部面積稍大

The thickness of the floor slabs (excluding plaster) of 19/F residential is 125 mm
Floor-to-floor height of 19/F residential is 3.15 m
The internal areas of the residential properties on the upper floor will generally be slightly larger than those on the lower floors because of the reducing thickness of the structural walls on the upper floors

發展項目期數的住宅物業樓面平面圖
 FLOOR PLANS OF RESIDENTIAL PROPERTIES IN THE PHASE OF THE DEVELOPMENT



天台平面圖
 ROOF PLAN

樓板 (不包括灰泥) 的厚度：不適用
 層與層之間的高度為：不適用
 因住宅物業的較高樓層的結構牆的厚度遞減，較高樓層的內部面積，一般比較低樓層的內部面積稍大

The thickness of the floor slabs (excluding plaster): Not applicable
 Floor-to-floor height: Not applicable
 The internal areas of the residential properties on the upper floor will generally be slightly larger than those on the lower floors because of the reducing thickness of the structural walls on the upper floors