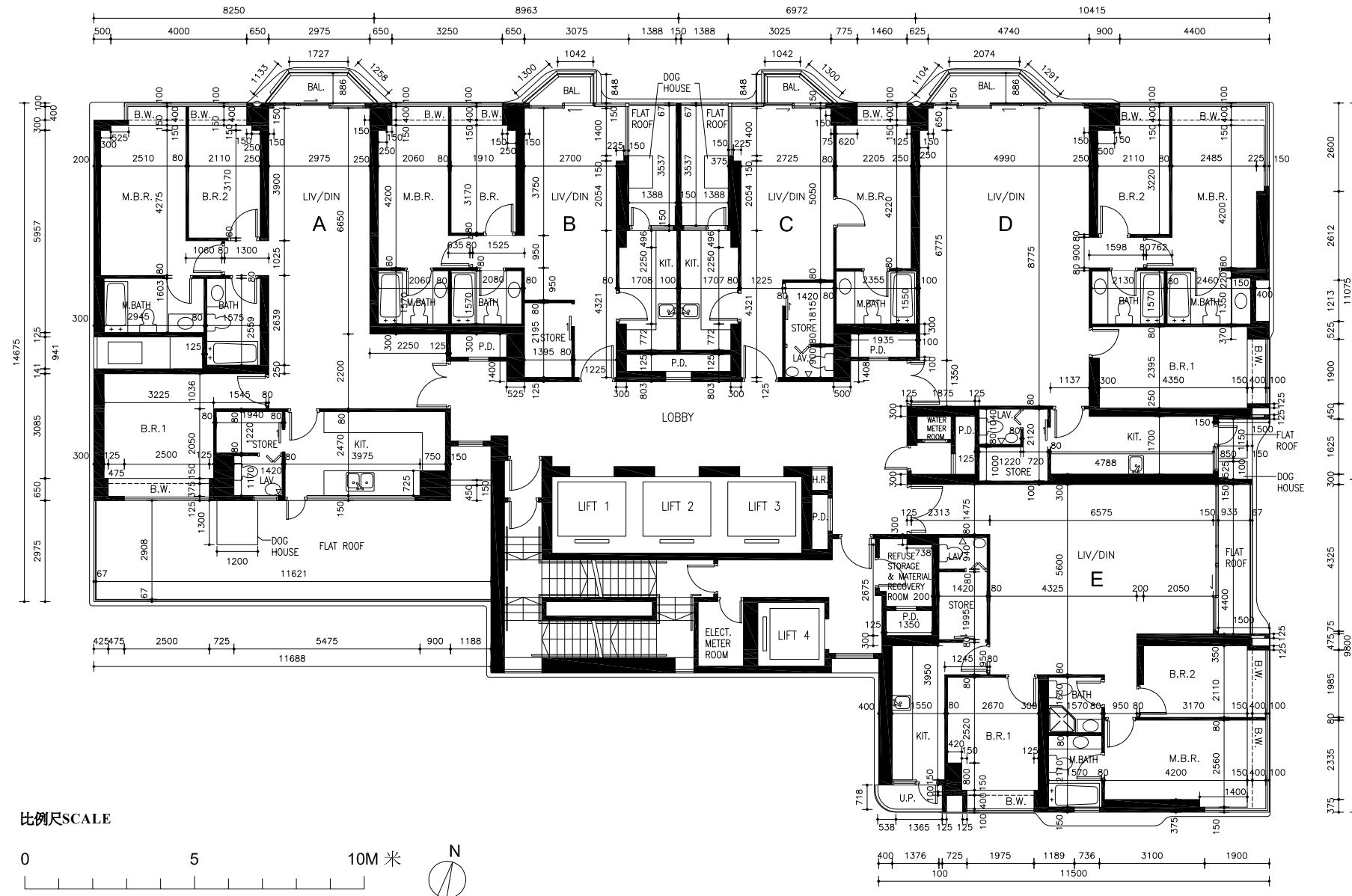


六樓
6th Floor



比例尺SCALE



- M.B.R. = Master Bedroom
 - M.B.R.1 = Master Bedroom 1
 - M.B.R.2 = Master Bedroom 2
 - M.B.R.3 = Master Bedroom 3
 - B.R. = Bedroom
 - B.R.1 = Bedroom 1
 - B.R.2 = Bedroom 2
 - B.R.3 = Bedroom 3
 - BATH = Bathroom
 - M.BATH = Master Bathroom
 - M.BATH 1 = Master Bathroom 1
 - M.BATH 2 = Master Bathroom 2
 - M.BATH 3 = Master Bathroom 3
 - KIT. = Kitchen
 - LAV. = Lavatory
 - LAV.1 = Lavatory 1
 - LAV.2 = Lavatory 2
 - STORE = Store
 - LIV. = Living Room
 - DIN. = Dining Room
 - BAL. = Balcony
 - CAN. = Canopy
 - U.P. = Utility platform
 - A.C. PLATFORM = Air-conditioning Platform
 - P.D. = Pipe Duct
 - C.D. = Cable Duct
 - H.R. = Hose Reel
 - B.W. = Bay Window
 - LIFT 1 = Lift 1
 - LIFT 2 = Lift 2
 - LIFT 3 = Lift 3
 - LIFT 4 = Lift 4
 - LOBBY = Lobby
 - WATER METER ROOM = Water Meter Room
 - ELECT. METER ROOM = Electric Meter Room
 - REFUSE STORAGE & MATERIAL RECOVERY ROOM = Refuse Storage & Material Recovery Room
 - FLAT ROOF = Flat Roof
 - MAIN ROOF = Main Roof
 - OUTDOOR POOL = Outdoor Pool
 - POOL DECK = Pool Deck
 - DOG HOUSE = Dog House
 - WALK-IN CLOSET = Walk-In Closet
 - ELECT. CABLE DUCT = Electric Cable Duct
 - OPEN A/C & HEATER PLANT AREA = Open Air-conditioning and Heater Plant Area
 - UNCOVERED DESIGNATED COMMON AREA AS DMC = Uncovered Designated common area as Deed of Mutual Covenant
- 主人房
 - 主人房 1
 - 主人房 2
 - 主人房 3
 - 睡房
 - 睡房1
 - 睡房2
 - 睡房3
 - 浴室
 - 主人房浴室
 - 主人房浴室1
 - 主人房浴室2
 - 主人房浴室3
 - 廚房
 - 洗手間
 - 洗手間1
 - 洗手間2
 - 儲物間
 - 客廳
 - 飯廳
 - 露台
 - 簷篷
 - 工作平台
 - 空調機平台
 - 管槽
 - 線槽
 - 消防喉轆
 - 窗台
 - 升降機1
 - 升降機2
 - 升降機3
 - 升降機4
 - 大堂
 - 水錶房
 - 電錶房
 - 垃圾及物料回收房
 - 平台
 - 天台
 - 室外泳池
 - 游泳池甲板
 - 機電小屋
 - 步入式衣帽間
 - 電線槽
 - 戶外空調機及熱水爐區域
 - 無蓋的公契訂明的公用地方

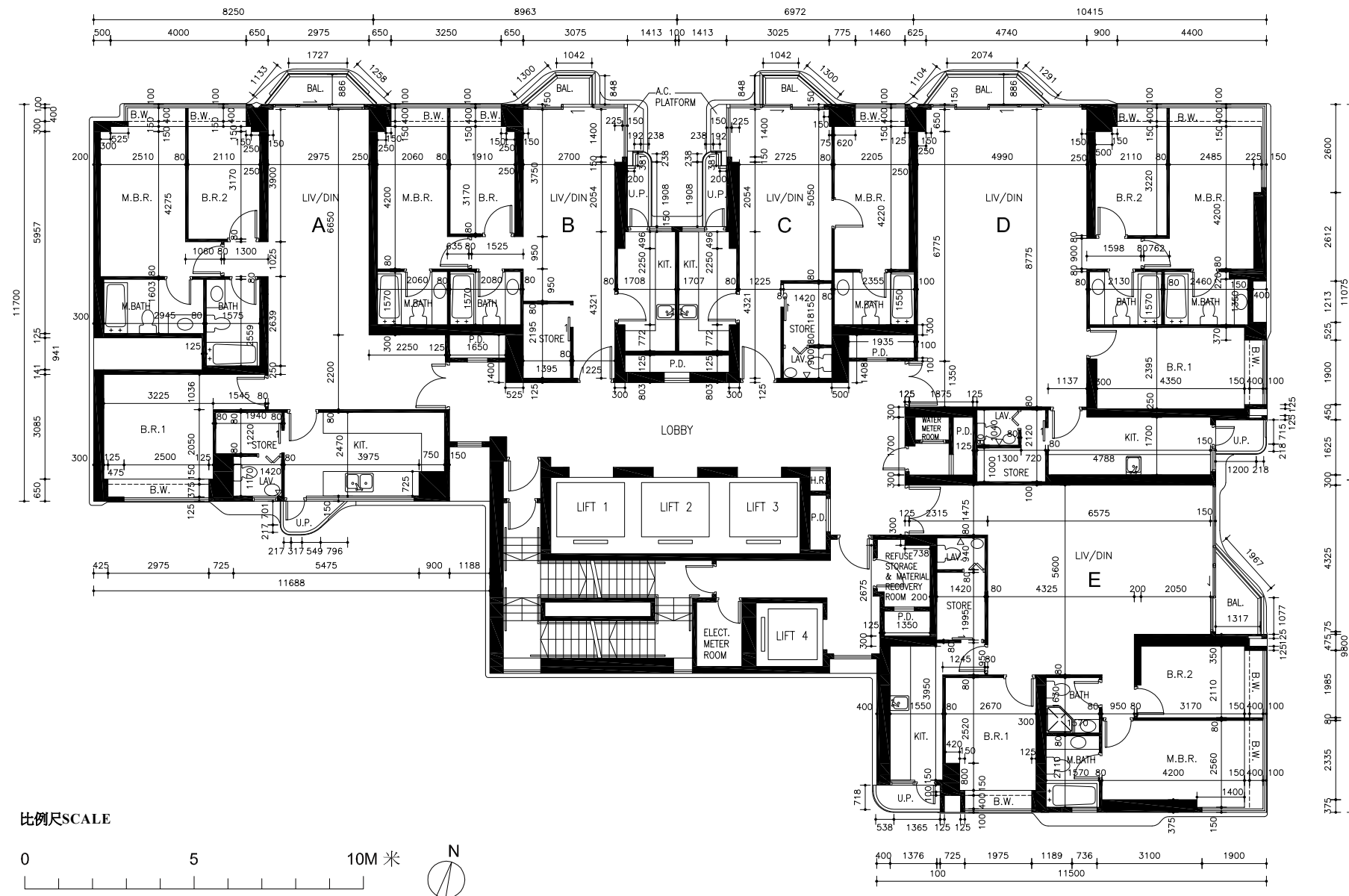
備註

1. 六樓住宅物業之層與層之間高度為3.5米。
2. 每個住宅單位的樓板(不包括灰泥)的厚度為:
六樓A單位: 150毫米、175毫米、200毫米;
六樓B單位: 150毫米、200毫米;
六樓C單位: 150毫米、200毫米;
六樓D單位: 150毫米、175毫米、250毫米;
六樓E單位: 150毫米、175毫米、250毫米。
3. 因住宅物業的較高樓層的結構牆的厚度遞減, 較高層的內部面積, 一般比較低層的內部面積稍大。
4. 平面圖所列之數字以毫米標示之建築結構呎吋, 並以2015年6月19日經屋宇署批准的建築圖則為基礎。

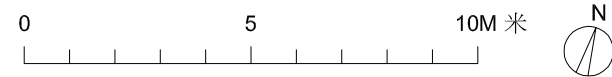
NOTE

1. The floor-to-floor height of 6/F residential property is 3.5m.
2. The thickness of the floor slabs (excluding plaster) of each residential property are:
6/F Unit A: 150mm, 175mm, 200mm;
6/F Unit B: 150mm, 200mm;
6/F Unit C: 150mm, 200mm;
6/F Unit D: 150mm, 175mm, 250mm;
6/F Unit E: 150mm, 175mm, 250mm.
3. The internal area of the residential properties on the upper floor will generally be slightly larger than those on the lower floors because of the reducing thickness of the structural walls on the upper floors.
4. The dimensions in floor plans are all structural dimensions in millimeter which were prepared on the basis of General Building Plan approved by the Buildings Department on 19 June 2015.

七樓至十二樓、十五樓至十六樓
7th-12th, 15th-16th Floor



比例尺SCALE



- M.B.R. = Master Bedroom
 - M.B.R.1 = Master Bedroom 1
 - M.B.R.2 = Master Bedroom 2
 - M.B.R.3 = Master Bedroom 3
 - B.R. = Bedroom
 - B.R.1 = Bedroom 1
 - B.R.2 = Bedroom 2
 - B.R.3 = Bedroom 3
 - BATH = Bathroom
 - M.BATH = Master Bathroom
 - M.BATH 1 = Master Bathroom 1
 - M.BATH 2 = Master Bathroom 2
 - M.BATH 3 = Master Bathroom 3
 - KIT. = Kitchen
 - LAV. = Lavatory
 - LAV.1 = Lavatory 1
 - LAV.2 = Lavatory 2
 - STORE = Store
 - LIV. = Living Room
 - DIN. = Dining Room
 - BAL. = Balcony
 - CAN. = Canopy
 - U.P. = Utility platform
 - A.C. PLATFORM = Air-conditioning Platform
 - P.D. = Pipe Duct
 - C.D. = Cable Duct
 - H.R. = Hose Reel
 - B.W. = Bay Window
 - LIFT 1 = Lift 1
 - LIFT 2 = Lift 2
 - LIFT 3 = Lift 3
 - LIFT 4 = Lift 4
 - LOBBY = Lobby
 - WATER METER ROOM = Water Meter Room
 - ELECT. METER ROOM = Electric Meter Room
 - REFUSE STORAGE & MATERIAL RECOVERY ROOM = Refuse Storage & Material Recovery Room
 - FLAT ROOF = Flat Roof
 - MAIN ROOF = Main Roof
 - OUTDOOR POOL = Outdoor Pool
 - POOL DECK = Pool Deck
 - DOG HOUSE = Dog House
 - WALK-IN CLOSET = Walk-In Closet
 - ELECT. CABLE DUCT = Electric Cable Duct
 - OPEN A/C & HEATER PLANT AREA = Open Air-conditioning and Heater Plant Area
 - UNCOVERED DESIGNATED COMMON AREA AS DMC = Uncovered Designated common area as Deed of Mutual Covenant
- 主人房
 - 主人房 1
 - 主人房 2
 - 主人房 3
 - 睡房
 - 睡房1
 - 睡房2
 - 睡房3
 - 浴室
 - 主人房浴室
 - 主人房浴室1
 - 主人房浴室2
 - 主人房浴室3
 - 廚房
 - 洗手間
 - 洗手間1
 - 洗手間2
 - 儲物間
 - 客廳
 - 飯廳
 - 露台
 - 簷篷
 - 工作平台
 - 空調機平台
 - 管槽
 - 線槽
 - 消防喉轆
 - 窗台
 - 升降機1
 - 升降機2
 - 升降機3
 - 升降機4
 - 大堂
 - 水錶房
 - 電錶房
 - 垃圾及物料回收房
 - 平台
 - 天台
 - 室外泳池
 - 游泳池甲板
 - 機電小屋
 - 步入式衣帽間
 - 電線槽
 - 戶外空調機及熱水爐區域
 - 無蓋的公契訂明的公用地方

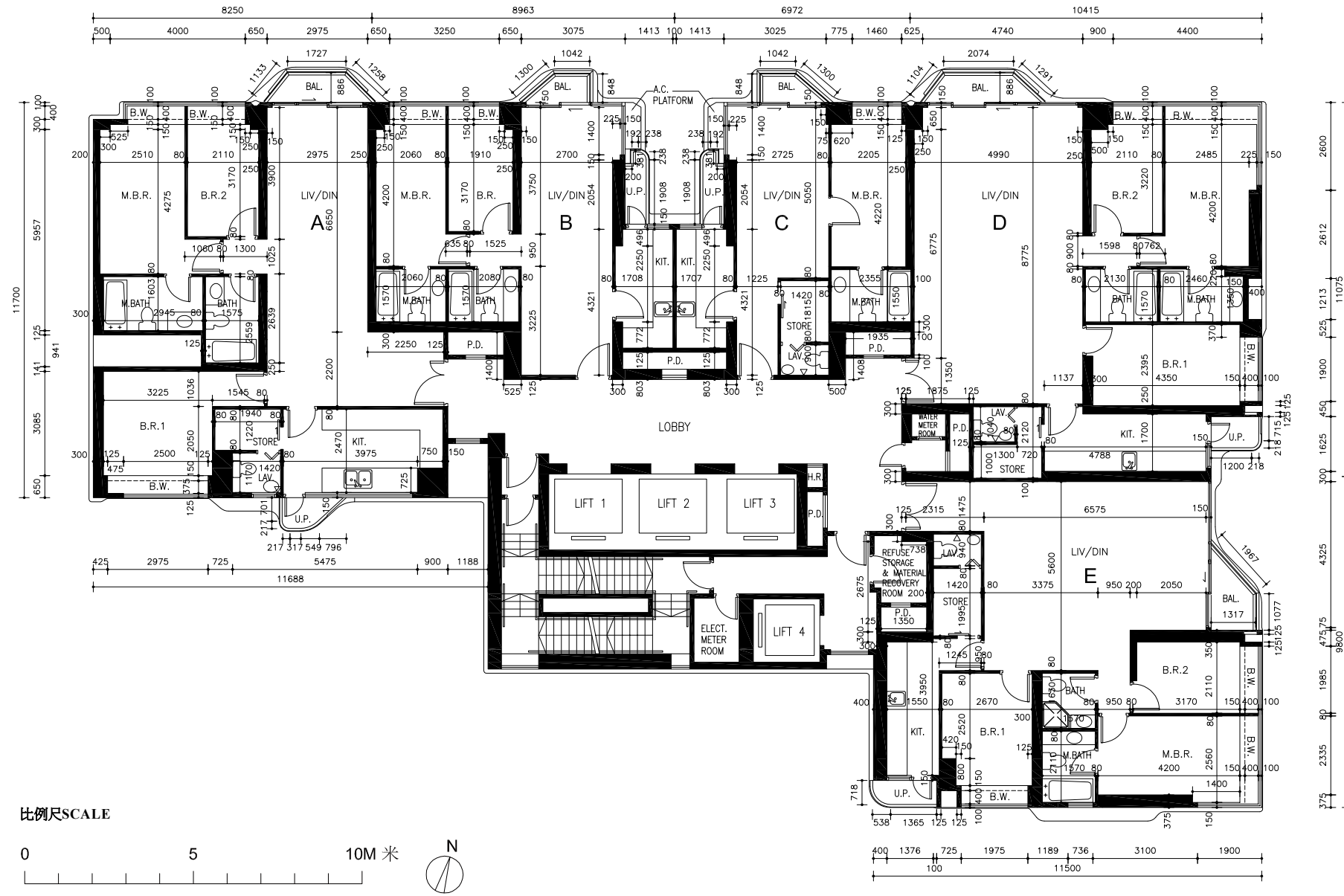
備註

1. 七樓至十二樓、十五樓至十六樓住宅物業之層與層之間高度為3.5米。
2. 每個住宅單位的樓板(不包括灰泥)的厚度為:
七樓至十二樓、十五樓至十六樓A單位: 150毫米、175毫米、200毫米;
七樓至十二樓、十五樓至十六樓B單位: 150毫米、200毫米;
七樓至十二樓、十五樓至十六樓C單位: 150毫米、200毫米;
七樓至十二樓、十五樓至十六樓D單位: 150毫米、175毫米、250毫米;
七樓至十二樓、十五樓至十六樓E單位: 150毫米、175毫米、250毫米。
3. 因住宅物業的較高樓層的結構牆的厚度遞減, 較高層的內部面積, 一般比較低層的內部面積稍大。
4. 平面圖所列之數字以毫米標示之建築結構呎吋, 並以2015年6月19日經屋宇署批准的建築圖則為基礎。

NOTE

1. The floor-to-floor height of 7/F-12/F, 15/F-16/F residential properties is 3.5m.
2. The thickness of the floor slabs (excluding plaster) of each residential property are:
7/F-12/F, 15/F-16/F Unit A: 150mm, 175mm, 200mm;
7/F-12/F, 15/F-16/F Unit B: 150mm, 200mm;
7/F-12/F, 15/F-16/F Unit C: 150mm, 200mm;
7/F-12/F, 15/F-16/F Unit D: 150mm, 175mm, 250mm;
7/F-12/F, 15/F-16/F Unit E: 150mm, 175mm, 250mm.
3. The internal area of the residential properties on the upper floor will generally be slightly larger than those on the lower floors because of the reducing thickness of the structural walls on the upper floors.
4. The dimensions in floor plans are all structural dimensions in millimeter which were prepared on the basis of General Building Plan approved by the Buildings Department on 19 June 2015.

十七樓
17th Floor



- M.B.R. = Master Bedroom
- M.B.R.1 = Master Bedroom 1
- M.B.R.2 = Master Bedroom 2
- M.B.R.3 = Master Bedroom 3
- B.R. = Bedroom
- B.R.1 = Bedroom 1
- B.R.2 = Bedroom 2
- B.R.3 = Bedroom 3
- BATH = Bathroom
- M.BATH = Master Bathroom
- M.BATH 1 = Master Bathroom 1
- M.BATH 2 = Master Bathroom 2
- M.BATH 3 = Master Bathroom 3
- KIT. = Kitchen
- LAV. = Lavatory
- LAV.1 = Lavatory 1
- LAV.2 = Lavatory 2
- STORE = Store
- LIV. = Living Room
- DIN. = Dining Room
- BAL. = Balcony
- CAN. = Canopy
- U.P. = Utility platform
- A.C. PLATFORM = Air-conditioning Platform
- P.D. = Pipe Duct
- C.D. = Cable Duct
- H.R. = Hose Reel
- B.W. = Bay Window
- LIFT 1 = Lift 1
- LIFT 2 = Lift 2
- LIFT 3 = Lift 3
- LIFT 4 = Lift 4
- LOBBY = Lobby
- WATER METER ROOM = Water Meter Room
- ELECT. METER ROOM = Electric Meter Room
- REFUSE STORAGE & MATERIAL RECOVERY ROOM = Refuse Storage & Material Recovery Room
- FLAT ROOF = Flat Roof
- MAIN ROOF = Main Roof
- OUTDOOR POOL = Outdoor Pool
- POOL DECK = Pool Deck
- DOG HOUSE = Dog House
- WALK-IN CLOSET = Walk-In Closet
- ELECT. CABLE DUCT = Electric Cable Duct
- OPEN A/C & HEATER PLANT AREA = Open Air-conditioning and Heater Plant Area
- UNCOVERED DESIGNATED COMMON AREA AS DMC = Uncovered Designated common area as Deed of Mutual Covenant

- 主人房
- 主人房 1
- 主人房 2
- 主人房 3
- 睡房
- 睡房1
- 睡房2
- 睡房3
- 浴室
- 主人房浴室
- 主人房浴室1
- 主人房浴室2
- 主人房浴室3
- 廚房
- 洗手間
- 洗手間1
- 洗手間2
- 儲物間
- 客廳
- 飯廳
- 露台
- 簷篷
- 工作平台
- 空調機平台
- 管槽
- 線槽
- 消防喉轆
- 窗台
- 升降機1
- 升降機2
- 升降機3
- 升降機4
- 大堂
- 水錶房
- 電錶房
- 垃圾及物料回收房
- 平台
- 天台
- 室外泳池
- 游泳池甲板
- 機電小屋
- 步入式衣帽間
- 電線槽
- 戶外空調機及熱水爐區域
- 無蓋的公契訂明的公用地方

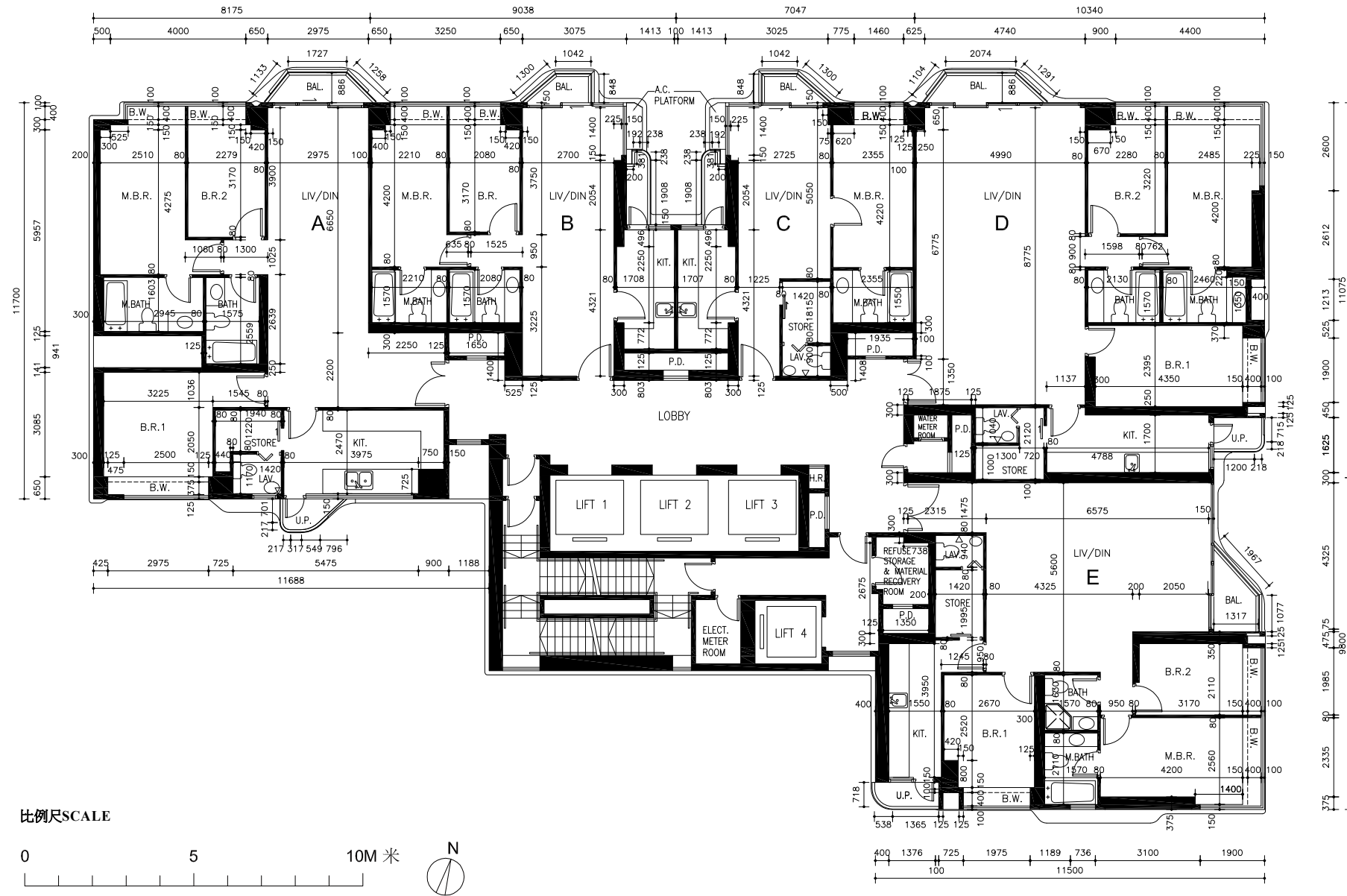
備註

1. 十七樓住宅物業之層與層之間高度為3.5米。
2. 每個住宅單位的樓板(不包括灰泥)的厚度為:
十七樓A單位: 150毫米、175毫米、200毫米;
十七樓B單位: 150毫米、200毫米;
十七樓C單位: 150毫米、200毫米;
十七樓D單位: 150毫米、175毫米、250毫米;
十七樓E單位: 150毫米、175毫米、250毫米。
3. 因住宅物業的較高樓層的結構牆的厚度遞減, 較高層的內部面積, 一般比較低層的內部面積稍大。
4. 平面圖所列之數字以毫米標示之建築結構呎吋, 並以2015年6月19日經屋宇署批准的建築圖則為基礎。

NOTE

1. The floor-to-floor height of 17/F residential properties is 3.5m.
2. The thickness of the floor slabs (excluding plaster) of each residential property are:
17/F Unit A: 150mm, 175mm, 200mm;
17/F Unit B: 150mm, 200mm;
17/F Unit C: 150mm, 200mm;
17/F Unit D: 150mm, 175mm, 250mm;
17/F Unit E: 150mm, 175mm, 250mm.
3. The internal area of the residential properties on the upper floor will generally be slightly larger than those on the lower floors because of the reducing thickness of the structural walls on the upper floors.
4. The dimensions in floor plans are all structural dimensions in millimeter which were prepared on the basis of General Building Plan approved by the Buildings Department on 19 June 2015.

十八樓至二十二樓
18th-22nd Floor



- M.B.R. = Master Bedroom
 - M.B.R.1 = Master Bedroom 1
 - M.B.R.2 = Master Bedroom 2
 - M.B.R.3 = Master Bedroom 3
 - B.R. = Bedroom
 - B.R.1 = Bedroom 1
 - B.R.2 = Bedroom 2
 - B.R.3 = Bedroom 3
 - BATH = Bathroom
 - M.BATH = Master Bathroom
 - M.BATH 1 = Master Bathroom 1
 - M.BATH 2 = Master Bathroom 2
 - M.BATH 3 = Master Bathroom 3
 - KIT. = Kitchen
 - LAV. = Lavatory
 - LAV.1 = Lavatory 1
 - LAV.2 = Lavatory 2
 - STORE = Store
 - LIV. = Living Room
 - DIN. = Dining Room
 - BAL. = Balcony
 - CAN. = Canopy
 - U.P. = Utility platform
 - A.C. PLATFORM = Air-conditioning Platform
 - P.D. = Pipe Duct
 - C.D. = Cable Duct
 - H.R. = Hose Reel
 - B.W. = Bay Window
 - LIFT 1 = Lift 1
 - LIFT 2 = Lift 2
 - LIFT 3 = Lift 3
 - LIFT 4 = Lift 4
 - LOBBY = Lobby
 - WATER METER ROOM = Water Meter Room
 - ELECT. METER ROOM = Electric Meter Room
 - REFUSE STORAGE & MATERIAL RECOVERY ROOM = Refuse Storage & Material Recovery Room
 - FLAT ROOF = Flat Roof
 - MAIN ROOF = Main Roof
 - OUTDOOR POOL = Outdoor Pool
 - POOL DECK = Pool Deck
 - DOG HOUSE = Dog House
 - WALK-IN CLOSET = Walk-In Closet
 - ELECT. CABLE DUCT = Electric Cable Duct
 - OPEN A/C & HEATER PLANT AREA = Open Air-conditioning and Heater Plant Area
 - UNCOVERED DESIGNATED COMMON AREA AS DMC = Uncovered Designated common area as Deed of Mutual Covenant
- 主人房
 - 主人房 1
 - 主人房 2
 - 主人房 3
 - 睡房
 - 睡房1
 - 睡房2
 - 睡房3
 - 浴室
 - 主人房浴室
 - 主人房浴室1
 - 主人房浴室2
 - 主人房浴室3
 - 廚房
 - 洗手間
 - 洗手間1
 - 洗手間2
 - 儲物間
 - 客廳
 - 飯廳
 - 露台
 - 簷篷
 - 工作平台
 - 空調機平台
 - 管槽
 - 線槽
 - 消防喉轆
 - 窗台
 - 升降機1
 - 升降機2
 - 升降機3
 - 升降機4
 - 大堂
 - 水錶房
 - 電錶房
 - 垃圾及物料回收房
 - 平台
 - 天台
 - 室外泳池
 - 游泳池甲板
 - 機電小屋
 - 步入式衣帽間
 - 電線槽
 - 戶外空調機及熱水爐區域
 - 無蓋的公契訂明的公用地方

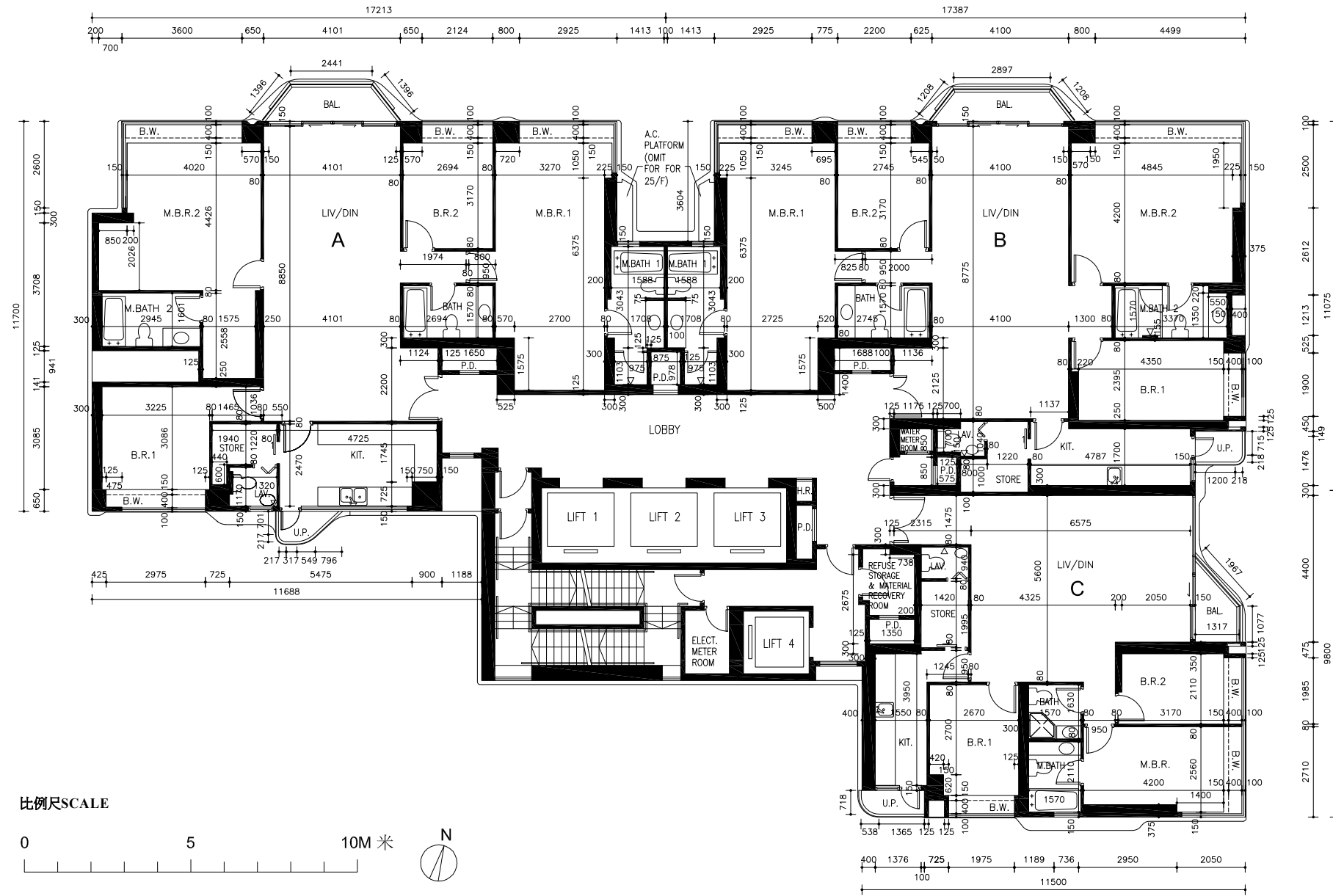
備註

1. 十八樓至二十二樓住宅物業之層與層之間高度為3.5米。
2. 每個住宅單位的樓板(不包括灰泥)的厚度為：
十八樓至二十二樓A單位：150毫米、175毫米、200毫米；
十八樓至二十二樓B單位：150毫米、200毫米；
十八樓至二十二樓C單位：150毫米、200毫米；
十八樓至二十二樓D單位：150毫米、175毫米、250毫米；
十八樓至二十二樓E單位：150毫米、175毫米、250毫米。
3. 因住宅物業的較高樓層的結構牆的厚度遞減，較高層的內部面積，一般比較低層的內部面積稍大。
4. 平面圖所列之數字以毫米標示之建築結構呎吋，並以2015年6月19日經屋宇署批准的建築圖則為基礎。

NOTE

1. The floor-to-floor height of 18/F-22/F residential properties is 3.5m.
2. The thickness of the floor slabs (excluding plaster) of each residential property are
18/F-22/F Unit A: 150mm, 175mm, 200mm;
18/F-22/F Unit B: 150mm, 200mm;
18/F-22/F Unit C: 150mm, 200mm;
18/F-22/F Unit D: 150mm, 175mm, 250mm;
18/F-22/F Unit E: 150mm, 175mm, 250mm.
3. The internal area of the residential properties on the upper floor will generally be slightly larger than those on the lower floors because of the reducing thickness of the structural walls on the upper floors.
4. The dimensions in floor plans are all structural dimensions in millimeter which were prepared on the basis of General Building Plan approved by the Buildings Department on 19 June 2015.

二十五樓至三十三樓、三十五樓至三十七樓
25th-33rd, 35th-37th Floor



- M.B.R. = Master Bedroom
- M.B.R.1 = Master Bedroom 1
- M.B.R.2 = Master Bedroom 2
- M.B.R.3 = Master Bedroom 3
- B.R. = Bedroom
- B.R.1 = Bedroom 1
- B.R.2 = Bedroom 2
- B.R.3 = Bedroom 3
- BATH = Bathroom
- M.BATH = Master Bathroom
- M.BATH 1 = Master Bathroom 1
- M.BATH 2 = Master Bathroom 2
- M.BATH 3 = Master Bathroom 3
- KIT. = Kitchen
- LAV. = Lavatory
- LAV.1 = Lavatory 1
- LAV.2 = Lavatory 2
- STORE = Store
- LIV. = Living Room
- DIN. = Dining Room
- BAL. = Balcony
- CAN. = Canopy
- U.P. = Utility platform
- A.C. PLATFORM = Air-conditioning Platform
- P.D. = Pipe Duct
- C.D. = Cable Duct
- H.R. = Hose Reel
- B.W. = Bay Window
- LIFT 1 = Lift 1
- LIFT 2 = Lift 2
- LIFT 3 = Lift 3
- LIFT 4 = Lift 4
- LOBBY = Lobby
- WATER METER ROOM = Water Meter Room
- ELECT. METER ROOM = Electric Meter Room
- REFUSE STORAGE & MATERIAL RECOVERY ROOM = Refuse Storage & Material Recovery Room
- FLAT ROOF = Flat Roof
- MAIN ROOF = Main Roof
- OUTDOOR POOL = Outdoor Pool
- POOL DECK = Pool Deck
- DOG HOUSE = Dog House
- WALK-IN CLOSET = Walk-In Closet
- ELECT. CABLE DUCT = Electric Cable Duct
- OPEN A/C & HEATER PLANT AREA = Open Air-conditioning and Heater Plant Area
- UNCOVERED DESIGNATED COMMON AREA AS DMC = Uncovered Designated common area as Deed of Mutual Covenant

- 主人房
- 主人房 1
- 主人房 2
- 主人房 3
- 睡房
- 睡房1
- 睡房2
- 睡房3
- 浴室
- 主人房浴室
- 主人房浴室1
- 主人房浴室2
- 主人房浴室3
- 廚房
- 洗手間
- 洗手間1
- 洗手間2
- 儲物間
- 客廳
- 飯廳
- 露台
- 簷篷
- 工作平台
- 空調機平台
- 管槽
- 線槽
- 消防喉轆
- 窗台
- 升降機1
- 升降機2
- 升降機3
- 升降機4
- 大堂
- 水錶房
- 電錶房
- 垃圾及物料回收房
- 平台
- 天台
- 室外泳池
- 游泳池甲板
- 機電小屋
- 步入式衣帽間
- 電線槽
- 戶外空調機及熱水爐區域
- 無蓋的公契訂明的公用地方

備註

1. 二十五樓至三十三樓、三十五樓至三十七樓住宅物業之層與層之間高度為3.5米。
2. 每個住宅單位的樓板(不包括批灰泥)的厚度為:
二十五樓至三十三樓、三十五樓至三十六樓A單位: 150毫米、175毫米、225毫米;
二十五樓至三十三樓、三十五樓至三十六樓B單位: 150毫米、175毫米、225毫米;
二十五樓至三十三樓、三十五樓至三十七樓C單位: 150毫米、175毫米、250毫米;
三十七樓A單位: 150毫米、175毫米、200毫米、225毫米、250毫米;
三十七樓B單位: 150毫米、175毫米、200毫米、225毫米、250毫米
3. 因住宅物業的較高樓層的結構牆的厚度遞減, 較高層的內部面積, 一般比較低層的內部面積稍大。
4. 平面圖所列之數字以毫米標示之建築結構呎吋, 並以2015年6月19日經屋宇署批准的建築圖則為基礎。

NOTE

1. The floor-to-floor height of 25/F-33/F, 35/F-37/F residential properties is 3.5m.
2. The thickness of the floor slabs (excluding plaster) of each residential property are:
25/F-33/F, 35/F-36/F Unit A: 150mm, 175mm, 225mm;
25/F-33/F, 35/F-36/F Unit B: 150mm, 175mm, 225mm;
25/F-33/F, 35/F-37/F Unit C: 150mm, 175mm, 250mm;
37/F Unit A: 150mm, 175mm, 200mm, 225mm, 250mm;
37/F Unit B: 150mm, 175mm, 200mm, 225mm, 250mm.
3. The internal area of the residential properties on the upper floor will generally be slightly larger than those on the lower floors because of the reducing thickness of the structural walls on the upper floors.
4. The dimensions in floor plans are all structural dimensions in millimeter which were prepared on the basis of General Building Plan approved by the Buildings Department on 19 June 2015.

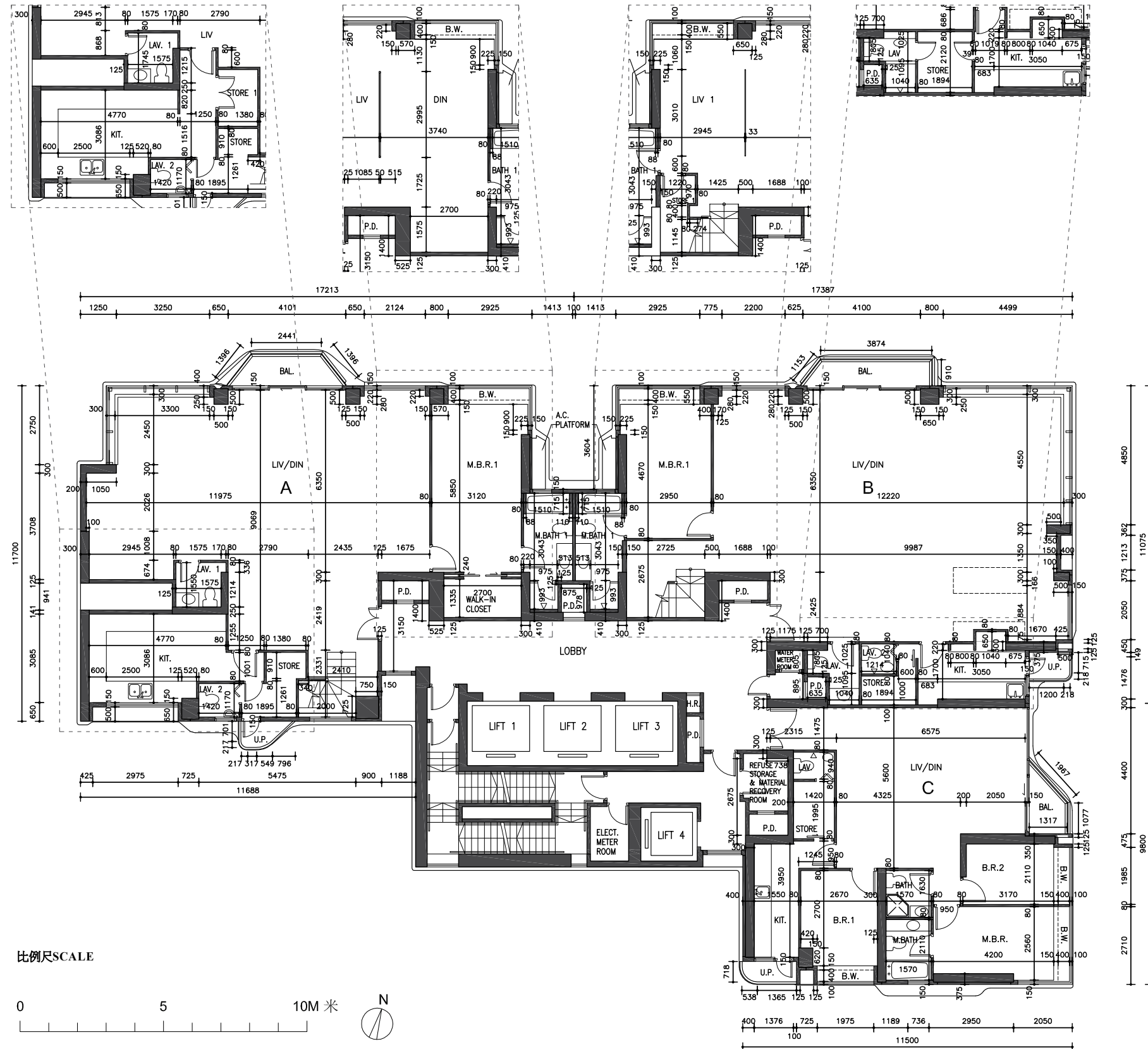
三十八樓、四十樓及四十二樓
38th, 40th & 42nd Floor

As-built Part Plan for 38/F ONLY
只適用於38樓之實際建造部份平面圖

As-built Part Plan for 38/F ONLY
只適用於38樓之實際建造部份平面圖

As-built Part Plan for 38/F ONLY
只適用於38樓之實際建造部份平面圖

As-built Part Plan for 38/F ONLY
只適用於38樓之實際建造部份平面圖

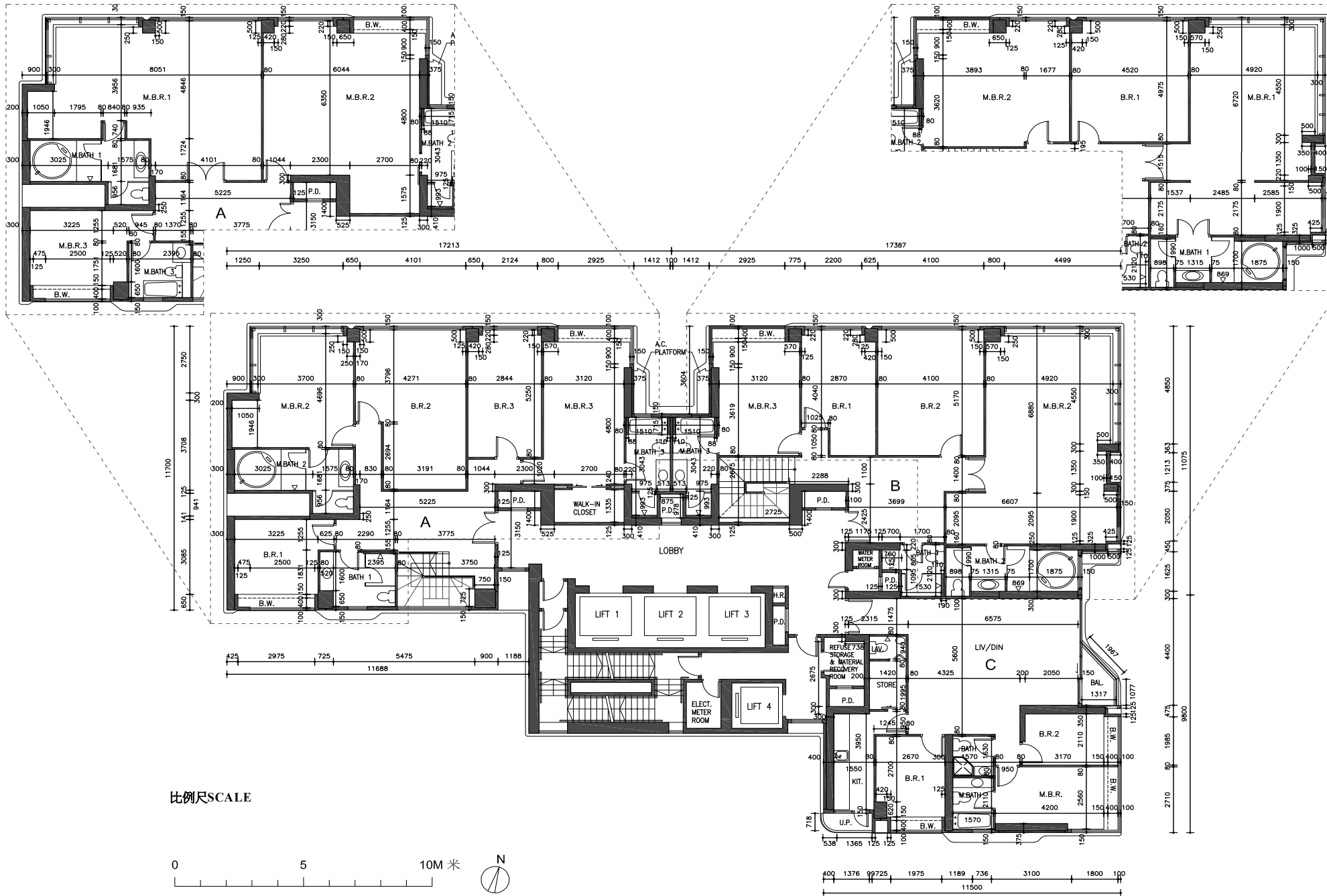


- M.B.R. = Master Bedroom
 - M.B.R.1 = Master Bedroom 1
 - M.B.R.2 = Master Bedroom 2
 - M.B.R.3 = Master Bedroom 3
 - B.R. = Bedroom
 - B.R.1 = Bedroom 1
 - B.R.2 = Bedroom 2
 - B.R.3 = Bedroom 3
 - BATH = Bathroom
 - M.BATH = Master Bathroom
 - M.BATH 1 = Master Bathroom 1
 - M.BATH 2 = Master Bathroom 2
 - M.BATH 3 = Master Bathroom 3
 - KIT. = Kitchen
 - LAV. = Lavatory
 - LAV.1 = Lavatory 1
 - LAV.2 = Lavatory 2
 - STORE = Store
 - STORE 1 = Store 1
 - LIV. = Living Room
 - LIV. 1 = Living Room 1
 - DIN. = Dining Room
 - BAL. = Balcony
 - CAN. = Canopy
 - U.P. = Utility platform
 - A.C. PLATFORM = Air-conditioning Platform
 - P.D. = Pipe Duct
 - C.D. = Cable Duct
 - H.R. = Hose Reel
 - B.W. = Bay Window
 - LIFT 1 = Lift 1
 - LIFT 2 = Lift 2
 - LIFT 3 = Lift 3
 - LIFT 4 = Lift 4
 - LOBBY = Lobby
 - WATER METER ROOM = Water Meter Room
 - ELECT. METER ROOM = Electric Meter Room
 - REFUSE STORAGE & MATERIAL RECOVERY ROOM = Refuse Storage & Material Recovery Room
 - FLAT ROOF = Flat Roof
 - MAIN ROOF = Main Roof
 - OUTDOOR POOL = Outdoor Pool
 - POOL DECK = Pool Deck
 - DOG HOUSE = Dog House
 - WALK-IN CLOSET = Walk-In Closet
 - ELECT. CABLE DUCT = Electric Cable Duct
 - OPEN A/C & HEATER PLANT AREA = Open Air-conditioning and Heater Plant Area
 - UNCOVERED DESIGNATED COMMON AREA AS DMC = Uncovered Designated common area as Deed of Mutual Covenant
- 主人房
 - 主人房 1
 - 主人房 2
 - 主人房 3
 - 睡房
 - 睡房1
 - 睡房2
 - 睡房3
 - 浴室
 - 主人房浴室
 - 主人房浴室1
 - 主人房浴室2
 - 主人房浴室3
 - 廚房
 - 洗手間
 - 洗手間1
 - 洗手間2
 - 儲物間
 - 儲物間1
 - 客廳
 - 客廳1
 - 飯廳
 - 露台
 - 簷篷
 - 工作平台
 - 空調機平台
 - 管槽
 - 線槽
 - 消防喉轆
 - 窗台
 - 升降機1
 - 升降機2
 - 升降機3
 - 升降機4
 - 大堂
 - 水錶房
 - 電錶房
 - 垃圾及物料回收房
 - 平台
 - 天台
 - 室外泳池
 - 游泳池甲板
 - 機電小屋
 - 步入式衣帽間
 - 電線槽
 - 戶外空調機及熱水爐區域
 - 無蓋的公契訂明的公用地方

三十九樓、四十一樓及四十三樓
39th, 41st & 43rd Floor

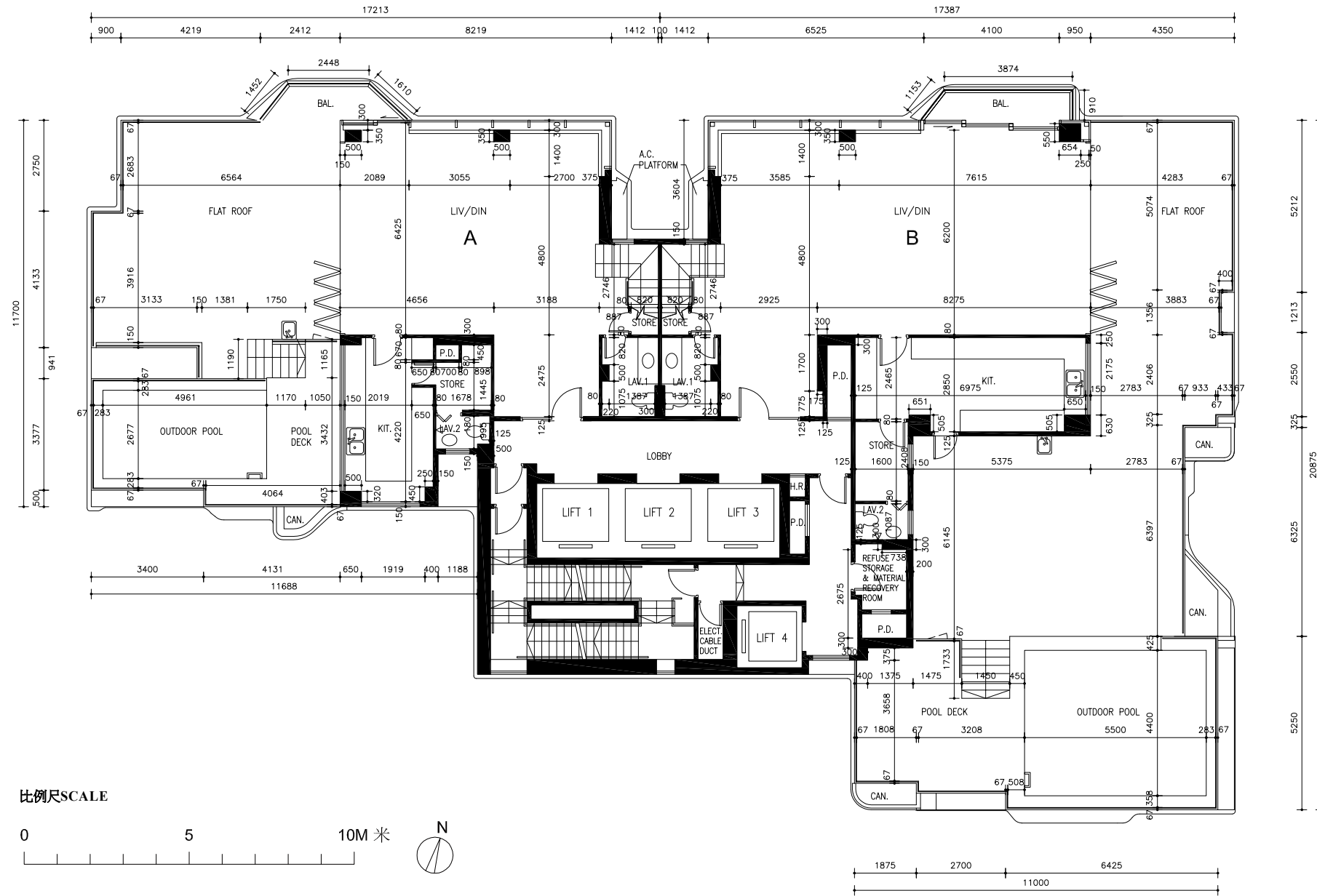
As-built Part Plan for 39/F ONLY
只適用於39樓之實際建造部份平面圖

As-built Part Plan for 39/F ONLY
只適用於39樓之實際建造部份平面圖



- M.B.R. = Master Bedroom
 - M.B.R.1 = Master Bedroom 1
 - M.B.R.2 = Master Bedroom 2
 - M.B.R.3 = Master Bedroom 3
 - B.R. = Bedroom
 - B.R.1 = Bedroom 1
 - B.R.2 = Bedroom 2
 - B.R.3 = Bedroom 3
 - BATH = Bathroom
 - BATH 1 = Bathroom 1
 - BATH 2 = Bathroom 2
 - M.BATH = Master Bathroom
 - M.BATH 1 = Master Bathroom 1
 - M.BATH 2 = Master Bathroom 2
 - M.BATH 3 = Master Bathroom 3
 - KIT. = Kitchen
 - LAV. = Lavatory
 - LAV.1 = Lavatory 1
 - LAV.2 = Lavatory 2
 - STORE = Store
 - LIV. = Living Room
 - DIN. = Dining Room
 - BAL. = Balcony
 - CAN. = Canopy
 - U.P. = Utility platform
 - A.C. PLATFORM = Air-conditioning Platform
 - P.D. = Pipe Duct
 - C.D. = Cable Duct
 - H.R. = Hose Reel
 - B.W. = Bay Window
 - LIFT 1 = Lift 1
 - LIFT 2 = Lift 2
 - LIFT 3 = Lift 3
 - LIFT 4 = Lift 4
 - LOBBY = Lobby
 - WATER METER ROOM = Water Meter Room
 - ELECT. METER ROOM = Electric Meter Room
 - REFUSE STORAGE & MATERIAL RECOVERY ROOM = Refuse Storage & Material Recovery Room
 - FLAT ROOF = Flat Roof
 - MAIN ROOF = Main Roof
 - OUTDOOR POOL = Outdoor Pool
 - POOL DECK = Pool Deck
 - DOG HOUSE = Dog House
 - WALK-IN CLOSET = Walk-In Closet
 - ELECT. CABLE DUCT = Electric Cable Duct
 - OPEN A/C & HEATER PLANT AREA = Open Air-conditioning and Heater Plant Area
 - UNCOVERED DESIGNATED COMMON AREA AS DMC = Uncovered Designated common area as Deed of Mutual Covenant
- 主人房
 - 主人房 1
 - 主人房 2
 - 主人房 3
 - 睡房
 - 睡房1
 - 睡房2
 - 睡房3
 - 浴室
 - 浴室1
 - 浴室2
 - 主人房浴室
 - 主人房浴室1
 - 主人房浴室2
 - 主人房浴室3
 - 廚房
 - 洗手間
 - 洗手間1
 - 洗手間2
 - 儲物間
 - 客廳
 - 飯廳
 - 露台
 - 簷篷
 - 工作平台
 - 空調機平台
 - 管槽
 - 線槽
 - 消防喉轆
 - 窗台
 - 升降機1
 - 升降機2
 - 升降機3
 - 升降機4
 - 大堂
 - 水錶房
 - 電錶房
 - 垃圾及物料回收房
 - 平台
 - 天台
 - 室外泳池
 - 游泳池甲板
 - 機電小屋
 - 步入式衣帽間
 - 電線槽
 - 戶外空調機及熱水爐區域
 - 無蓋的公契訂明的公用地方

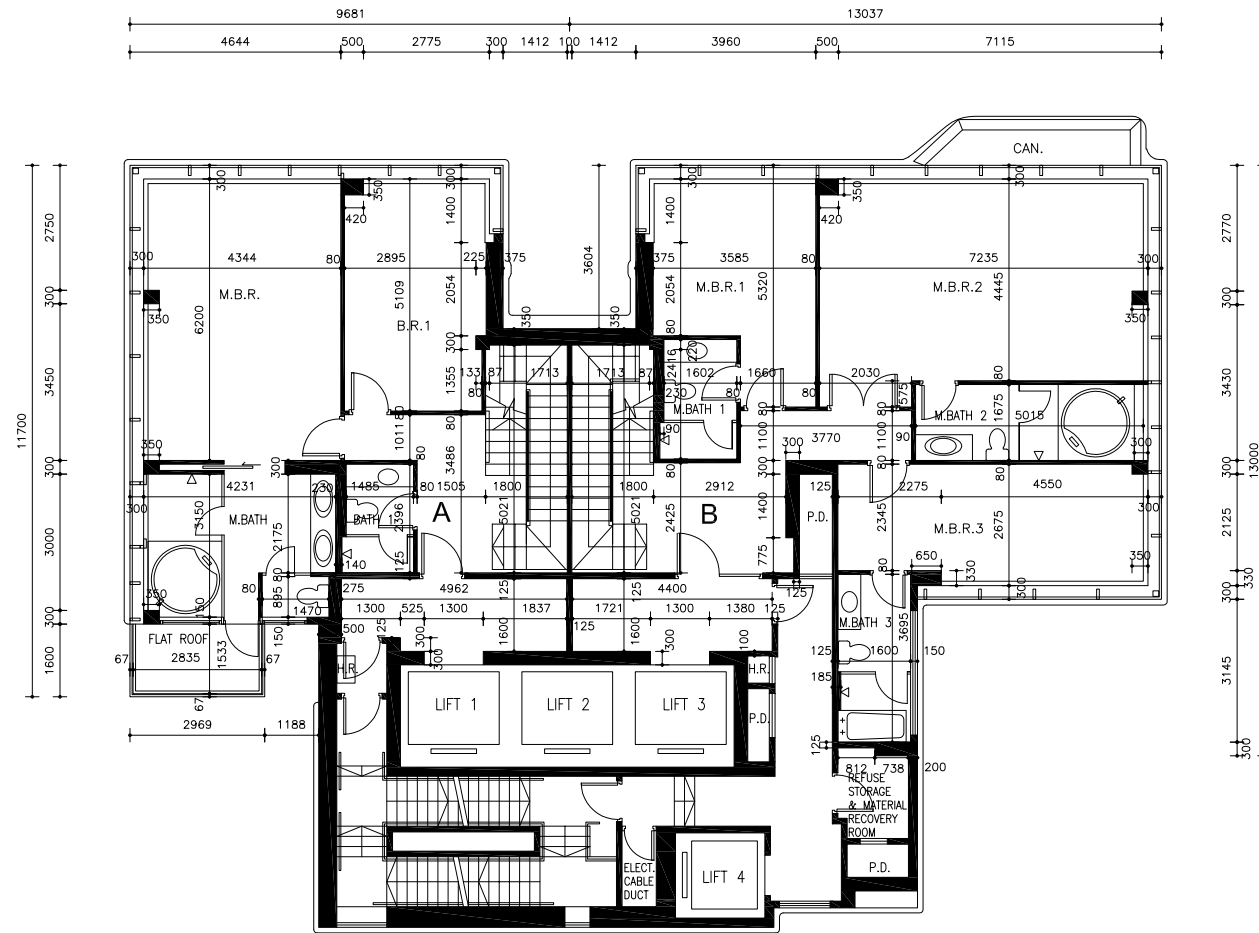
四十五樓
45th Floor



- M.B.R. = Master Bedroom
- M.B.R.1 = Master Bedroom 1
- M.B.R.2 = Master Bedroom 2
- M.B.R.3 = Master Bedroom 3
- B.R. = Bedroom
- B.R.1 = Bedroom 1
- B.R.2 = Bedroom 2
- B.R.3 = Bedroom 3
- BATH = Bathroom
- M.BATH = Master Bathroom
- M.BATH 1 = Master Bathroom 1
- M.BATH 2 = Master Bathroom 2
- M.BATH 3 = Master Bathroom 3
- KIT. = Kitchen
- LAV. = Lavatory
- LAV.1 = Lavatory 1
- LAV.2 = Lavatory 2
- STORE = Store
- LIV. = Living Room
- DIN. = Dining Room
- BAL. = Balcony
- CAN. = Canopy
- U.P. = Utility platform
- A.C. PLATFORM = Air-conditioning Platform
- P.D. = Pipe Duct
- C.D. = Cable Duct
- H.R. = Hose Reel
- B.W. = Bay Window
- LIFT 1 = Lift 1
- LIFT 2 = Lift 2
- LIFT 3 = Lift 3
- LIFT 4 = Lift 4
- LOBBY = Lobby
- WATER METER ROOM = Water Meter Room
- ELECT. METER ROOM = Electric Meter Room
- REFUSE STORAGE & MATERIAL RECOVERY ROOM = Refuse Storage & Material Recovery Room
- FLAT ROOF = Flat Roof
- MAIN ROOF = Main Roof
- OUTDOOR POOL = Outdoor Pool
- POOL DECK = Pool Deck
- DOG HOUSE = Dog House
- WALK-IN CLOSET = Walk-In Closet
- ELECT. CABLE DUCT = Electric Cable Duct
- OPEN A/C & HEATER PLANT AREA = Open Air-conditioning and Heater Plant Area
- UNCOVERED DESIGNATED COMMON AREA AS DMC = Uncovered Designated common area as Deed of Mutual Covenant

- 主人房
- 主人房 1
- 主人房 2
- 主人房 3
- 睡房
- 睡房1
- 睡房2
- 睡房3
- 浴室
- 主人房浴室
- 主人房浴室1
- 主人房浴室2
- 主人房浴室3
- 廚房
- 洗手間
- 洗手間1
- 洗手間2
- 儲物間
- 客廳
- 飯廳
- 露台
- 簷篷
- 工作平台
- 空調機平台
- 管槽
- 線槽
- 消防喉轆
- 窗台
- 升降機1
- 升降機2
- 升降機3
- 升降機4
- 大堂
- 水錶房
- 電錶房
- 垃圾及物料回收房
- 平台
- 天台
- 室外泳池
- 游泳池甲板
- 機電小屋
- 步入式衣帽間
- 電線槽
- 戶外空調機及熱水爐區域
- 無蓋的公契訂明的公用地方

四十六樓
46th Floor



比例尺SCALE



- M.B.R. = Master Bedroom
 - M.B.R.1 = Master Bedroom 1
 - M.B.R.2 = Master Bedroom 2
 - M.B.R.3 = Master Bedroom 3
 - B.R. = Bedroom
 - B.R.1 = Bedroom 1
 - B.R.2 = Bedroom 2
 - B.R.3 = Bedroom 3
 - BATH = Bathroom
 - M.BATH = Master Bathroom
 - M.BATH 1 = Master Bathroom 1
 - M.BATH 2 = Master Bathroom 2
 - M.BATH 3 = Master Bathroom 3
 - KIT. = Kitchen
 - LAV. = Lavatory
 - LAV.1 = Lavatory 1
 - LAV.2 = Lavatory 2
 - STORE = Store
 - LIV. = Living Room
 - DIN. = Dining Room
 - BAL. = Balcony
 - CAN. = Canopy
 - U.P. = Utility platform
 - A.C. PLATFORM = Air-conditioning Platform
 - P.D. = Pipe Duct
 - C.D. = Cable Duct
 - H.R. = Hose Reel
 - B.W. = Bay Window
 - LIFT 1 = Lift 1
 - LIFT 2 = Lift 2
 - LIFT 3 = Lift 3
 - LIFT 4 = Lift 4
 - LOBBY = Lobby
 - WATER METER ROOM = Water Meter Room
 - ELECT. METER ROOM = Electric Meter Room
 - REFUSE STORAGE & MATERIAL RECOVERY ROOM = Refuse Storage & Material Recovery Room
 - FLAT ROOF = Flat Roof
 - MAIN ROOF = Main Roof
 - OUTDOOR POOL = Outdoor Pool
 - POOL DECK = Pool Deck
 - DOG HOUSE = Dog House
 - WALK-IN CLOSET = Walk-In Closet
 - ELECT. CABLE DUCT = Electric Cable Duct
 - OPEN A/C & HEATER PLANT AREA = Open Air-conditioning and Heater Plant Area
 - UNCOVERED DESIGNATED COMMON AREA AS DMC = Uncovered Designated common area as Deed of Mutual Covenant
- 主人房
 - 主人房 1
 - 主人房 2
 - 主人房 3
 - 睡房
 - 睡房1
 - 睡房2
 - 睡房3
 - 浴室
 - 主人房浴室
 - 主人房浴室1
 - 主人房浴室2
 - 主人房浴室3
 - 廚房
 - 洗手間
 - 洗手間1
 - 洗手間2
 - 儲物間
 - 客廳
 - 飯廳
 - 露台
 - 簷篷
 - 工作平台
 - 空調機平台
 - 管槽
 - 線槽
 - 消防喉轆
 - 窗台
 - 升降機1
 - 升降機2
 - 升降機3
 - 升降機4
 - 大堂
 - 水錶房
 - 電錶房
 - 垃圾及物料回收房
 - 平台
 - 天台
 - 室外泳池
 - 游泳池甲板
 - 機電小屋
 - 步入式衣帽間
 - 電線槽
 - 戶外空調機及熱水爐區域
 - 無蓋的公契訂明的公用地方

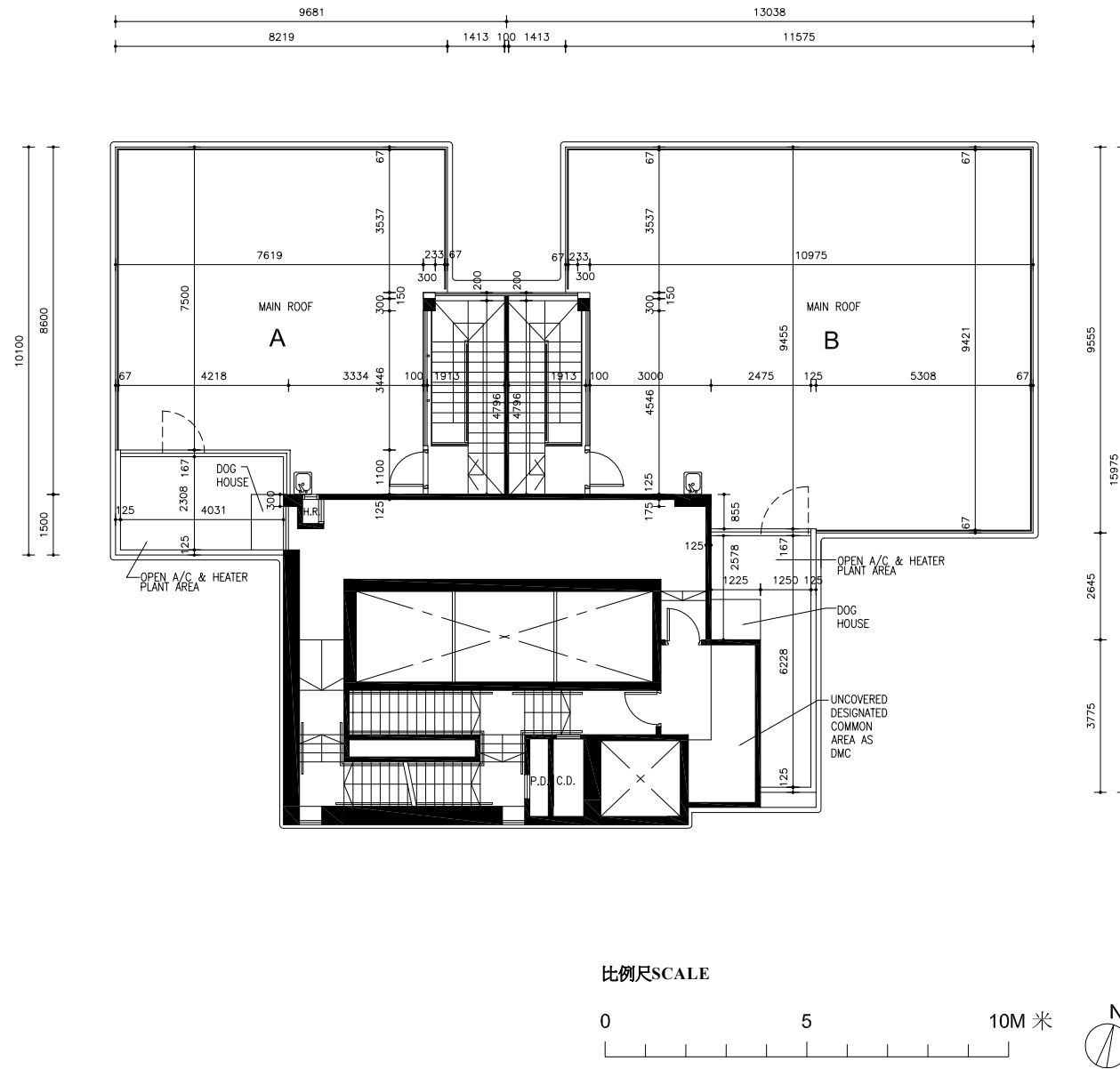
備註

1. 四十六樓住宅物業之層與層之間高度為3.75米。
2. 每個住宅單位的樓板(不包括灰泥)的厚度為：
四十六樓A單位：150毫米、200毫米、300毫米；
四十六樓B單位：150毫米、200毫米、350毫米。
3. 因住宅物業的較高樓層的結構牆的厚度遞減，較高層的內部面積，一般比較低層的內部面積稍大。
4. 平面圖所列之數字以毫米標示之建築結構呎吋，並以2015年6月19日經屋宇署批准的建築圖則為基礎。

NOTE

1. The floor-to-floor height of 46/F residential property is 3.75m.
2. The thickness of the floor slabs (excluding plaster) of each residential property are:
46/F Unit A: 150mm, 200mm, 300mm;
46/F Unit B: 150mm, 200mm, 350mm.
3. The internal area of the residential properties on the upper floor will generally be slightly larger than those on the lower floors because of the reducing thickness of the structural walls on the upper floors.
4. The dimensions in floor plans are all structural dimensions in millimeter which were prepared on the basis of General Building Plan approved by the Buildings Department on 19 June 2015.

天台
Roof



- M.B.R. = Master Bedroom
 - M.B.R.1 = Master Bedroom 1
 - M.B.R.2 = Master Bedroom 2
 - M.B.R.3 = Master Bedroom 3
 - B.R. = Bedroom
 - B.R.1 = Bedroom 1
 - B.R.2 = Bedroom 2
 - B.R.3 = Bedroom 3
 - BATH = Bathroom
 - M.BATH = Master Bathroom
 - M.BATH 1 = Master Bathroom 1
 - M.BATH 2 = Master Bathroom 2
 - M.BATH 3 = Master Bathroom 3
 - KIT. = Kitchen
 - LAV. = Lavatory
 - LAV.1 = Lavatory 1
 - LAV.2 = Lavatory 2
 - STORE = Store
 - LIV. = Living Room
 - DIN. = Dining Room
 - BAL. = Balcony
 - CAN. = Canopy
 - U.P. = Utility platform
 - A.C. PLATFORM = Air-conditioning Platform
 - P.D. = Pipe Duct
 - C.D. = Cable Duct
 - H.R. = Hose Reel
 - B.W. = Bay Window
 - LIFT 1 = Lift 1
 - LIFT 2 = Lift 2
 - LIFT 3 = Lift 3
 - LIFT 4 = Lift 4
 - LOBBY = Lobby
 - WATER METER ROOM = Water Meter Room
 - ELECT. METER ROOM = Electric Meter Room
 - REFUSE STORAGE & MATERIAL RECOVERY ROOM = Refuse Storage & Material Recovery Room
 - FLAT ROOF = Flat Roof
 - MAIN ROOF = Main Roof
 - OUTDOOR POOL = Outdoor Pool
 - POOL DECK = Pool Deck
 - DOG HOUSE = Dog House
 - WALK-IN CLOSET = Walk-In Closet
 - ELECT. CABLE DUCT = Electric Cable Duct
 - OPEN A/C & HEATER PLANT AREA = Open Air-conditioning and Heater Plant Area
 - UNCOVERED DESIGNATED COMMON AREA AS DMC = Uncovered Designated common area as Deed of Mutual Covenant
- 主人房
 - 主人房 1
 - 主人房 2
 - 主人房 3
 - 睡房
 - 睡房1
 - 睡房2
 - 睡房3
 - 浴室
 - 主人房浴室
 - 主人房浴室1
 - 主人房浴室2
 - 主人房浴室3
 - 廚房
 - 洗手間
 - 洗手間1
 - 洗手間2
 - 儲物間
 - 客廳
 - 飯廳
 - 露台
 - 簷篷
 - 工作平台
 - 空調機平台
 - 管槽
 - 線槽
 - 消防喉轆
 - 窗台
 - 升降機1
 - 升降機2
 - 升降機3
 - 升降機4
 - 大堂
 - 水錶房
 - 電錶房
 - 垃圾及物料回收房
 - 平台
 - 天台
 - 室外泳池
 - 游泳池甲板
 - 機電小屋
 - 步入式衣帽間
 - 電線槽
 - 戶外空調機及熱水爐區域
 - 無蓋的公契訂明的公用地方

備註

平面圖所列之數字以毫米標示之建築結構呎吋，並以2015年6月19日經屋宇署批准的建築圖則為基礎。

NOTE

The dimensions in floor plans are all structural dimensions in millimeter which were prepared on the basis of General Building Plan approved by the Buildings Department on 19 June 2015.