

10 FLOOR PLANS OF RESIDENTIAL PROPERTIES IN THE DEVELOPMENT

發展項目的住宅物業的樓面平面圖

下列平面圖圖例及備註適用於「發展項目的住宅物業的樓面平面圖」中所有頁數。

The legend for floor plans and notes are applicable for all pages in "Floor Plans of Residential Properties in the Development".

Legend for floor plans 平面圖圖例

A/C	=	Air-conditioner 空調機
A/C Plant Room	=	Air-conditioner Plant Room 空調機房
Bath	=	Bathroom 浴室
B.W.	=	Bay Window 窗台
E.M.R.	=	Electrical Meter Room 電錶房
EMC	=	Electricity Meter Cabinet 電錶箱
H.R.	=	Hose Reel 消防喉轆
Lav.	=	Lavatory 洗手間
MAID WC	=	Maid Water Closet 工人廁所
P.D.	=	Pipe Duct 槽位
Store	=	Store Room 儲物室
U.P.	=	Utility Platform 工作平台
W.M.C. AT L/L	=	Water Meter Cabinet At Low Level 水錶箱在低位

備註:

- 部分樓層外牆範圍設有建築裝飾、金屬格柵及/或外露喉管，詳細資料請參考最新批准的建築圖則。
- 部分住宅物業的露台及/或平台及/或空調機平台及/或外牆上/附近設有外露及/或外牆裝飾板內藏之公用喉管，詳細資料請參考最新批准的建築圖則及/或排水設施圖則。
- 部分住宅物業天花板有跌級樓板(用以安裝樓上單位之機電設備)及/或假天花內裝置空調裝置及/或其他機電設備。
- 露台為不可封閉的地方。

Notes:

- There are architectural features, metal grilles and/or exposed pipes on the external walls of some of the floors. For details, please refer to the latest approved building plans.
- Common pipes exposed and/or enclosed in cladding are located at/adjacent to the balcony and/or flat roof and/or air-conditioner platform and/or external wall of some residential units. For details, please refer to the latest approved building plans and/or approved drainage plans.
- There are sunken slabs (for M&E services of units above) and/or ceiling bulkheads for the air-conditioning fittings and/or M&E services at some residential properties.
- Balconies are non-enclosed areas.

第1座 - 5樓平面圖
Block 1 - 5th Floor Plan



比例 SCALE : 0M(米) 5M(米)

每個住宅物業 Each Residential Property	單位 Unit	A	B	C
	樓層 Floor			
樓板(不包括灰泥)的厚度(毫米) Thickness of Floor Slab (excluding plaster) (mm)	5/F	125, 150, 200, 250, 350	125, 150, 175, 250, 350	125, 150, 200, 250, 300
層與層之間的高度(毫米) Floor-to-Floor Height (mm)		2850, 2920, 3120, 3300	2850, 2920, 3120, 3300	2920, 3300

因住宅物業的較高樓層的結構牆的厚度遞減，較高樓層的內部面積，一般比較低樓層的內部面積稍大。
The internal areas of the residential properties on the upper floors will generally be slightly larger than those on the lower floors because of the reducing thickness of the structural walls on the upper floors.

備註：平面圖之尺規所列數字為以毫米標示之建築結構尺寸。
Note: The dimensions of floor plans are all structural dimensions in millimeter.

10 FLOOR PLANS OF RESIDENTIAL PROPERTIES IN THE DEVELOPMENT

發展項目的住宅物業的樓面平面圖

第1座 - 6樓至13樓平面圖
Block 1 - 6th to 13th Floor Plan



比例 SCALE : 0M(米) 5M(米)

每個住宅物業 Each Residential Property	單位 Unit	A	B	C
	樓層 Floor			
樓板(不包括灰泥)的厚度(毫米) Thickness of Floor Slab (excluding plaster) (mm)	6/F - 13/F	125, 150, 200, 250, 350	125, 150, 175, 250, 350	125, 150, 200, 250, 300
層與層之間的高度(毫米) Floor-to-Floor Height (mm)		2850, 2920, 3120, 3300	2850, 2920, 3120, 3300	2920, 3300

因住宅物業的較高樓層的結構牆的厚度遞減，較高樓層的內部面積，一般比較低樓層的內部面積稍大。
The internal areas of the residential properties on the upper floors will generally be slightly larger than those on the lower floors because of the reducing thickness of the structural walls on the upper floors.

備註：平面圖之尺規所列數字為以毫米標示之建築結構尺寸。
Note: The dimensions of floor plans are all structural dimensions in millimeter.

第1座 - 15樓至25樓平面圖
Block 1 - 15th to 25th Floor Plan



比例 SCALE : 0M(米) 5M(米)

每個住宅物業 Each Residential Property	單位 Unit	A	B	C
	樓層 Floor			
樓板(不包括灰泥)的厚度(毫米) Thickness of Floor Slab (excluding plaster) (mm)	15/F - 25/F	125, 150, 200, 250, 350	125, 150, 175, 250, 350	125, 150, 200, 250, 300
層與層之間的高度(毫米) Floor-to-Floor Height (mm)		2850, 2920, 3120, 3300	2850, 2920, 3120, 3300	2920, 3300

因住宅物業的較高樓層的結構牆的厚度遞減，較高樓層的內部面積，一般比較低樓層的內部面積稍大。
The internal areas of the residential properties on the upper floors will generally be slightly larger than those on the lower floors because of the reducing thickness of the structural walls on the upper floors.

備註：平面圖之尺規所列數字為以毫米標示之建築結構尺寸。
Note: The dimensions of floor plans are all structural dimensions in millimeter.

第1座 - 26樓至27樓平面圖
Block 1 - 26th to 27th Floor Plan



比例 SCALE : 0M(米) 5M(米)

每個住宅物業 Each Residential Property	單位 Unit	A	B	C
	樓層 Floor			
樓板(不包括灰泥)的厚度(毫米) Thickness of Floor Slab (excluding plaster) (mm)	26/F - 27/F	125, 150, 200, 250, 350	125, 150, 175, 250, 350	125, 150, 200, 250, 300
層與層之間的高度(毫米) Floor-to-Floor Height (mm)		2850, 2920, 3120, 3300	2850, 2920, 3120, 3300	2920, 3300

因住宅物業的較高樓層的結構牆的厚度遞減，較高樓層的內部面積，一般比較低樓層的內部面積稍大。
The internal areas of the residential properties on the upper floors will generally be slightly larger than those on the lower floors because of the reducing thickness of the structural walls on the upper floors.

備註：平面圖之尺規所列數字為以毫米標示之建築結構尺寸。
Note: The dimensions of floor plans are all structural dimensions in millimeter.

第1座 - 28樓平面圖
Block 1 - 28th Floor Plan



比例 SCALE : 0M(米) 5M(米)

每個住宅物業 Each Residential Property	單位 Unit	A	B	C
	樓層 Floor			
樓板(不包括灰泥)的厚度(毫米) Thickness of Floor Slab (excluding plaster) (mm)	28/F	125, 150, 200, 250, 350	125, 150, 175, 250, 350	125, 150, 200, 250, 300
層與層之間的高度(毫米) Floor-to-Floor Height (mm)		2750, 2820, 3020, 3200, 4000	2750, 2820, 3020, 3200, 4000	3620, 4000

因住宅物業的較高樓層的結構牆的厚度遞減，較高樓層的內部面積，一般比較低樓層的內部面積稍大。
The internal areas of the residential properties on the upper floors will generally be slightly larger than those on the lower floors because of the reducing thickness of the structural walls on the upper floors.

備註：平面圖之尺規所列數字為以毫米標示之建築結構尺寸。
Note: The dimensions of floor plans are all structural dimensions in millimeter.

第1座 - 29樓平面圖
Block 1 - 29th Floor Plan



比例 SCALE : 0M(米) 5M(米)

每個住宅物業 Each Residential Property	單位 Unit	A	B	C
	樓層 Floor			
樓板(不包括灰泥)的厚度(毫米) Thickness of Floor Slab (excluding plaster) (mm)	29/F	125, 150, 200, 250, 350	125, 150, 175, 250, 350	125, 150, 200, 250, 300
層與層之間的高度(毫米) Floor-to-Floor Height (mm)		2750, 2820, 3200, 4000	2750, 2820, 3020, 3200, 3620, 4000	3620, 3820, 4000

因住宅物業的較高樓層的結構牆的厚度遞減，較高樓層的內部面積，一般比較低樓層的內部面積稍大。
The internal areas of the residential properties on the upper floors will generally be slightly larger than those on the lower floors because of the reducing thickness of the structural walls on the upper floors.

備註：平面圖之尺規所列數字為以毫米標示之建築結構尺寸。
Note: The dimensions of floor plans are all structural dimensions in millimeter.

第1座 - 30樓平面圖
Block 1 - 30th Floor Plan



比例 SCALE : 0M(米) 5M(米)

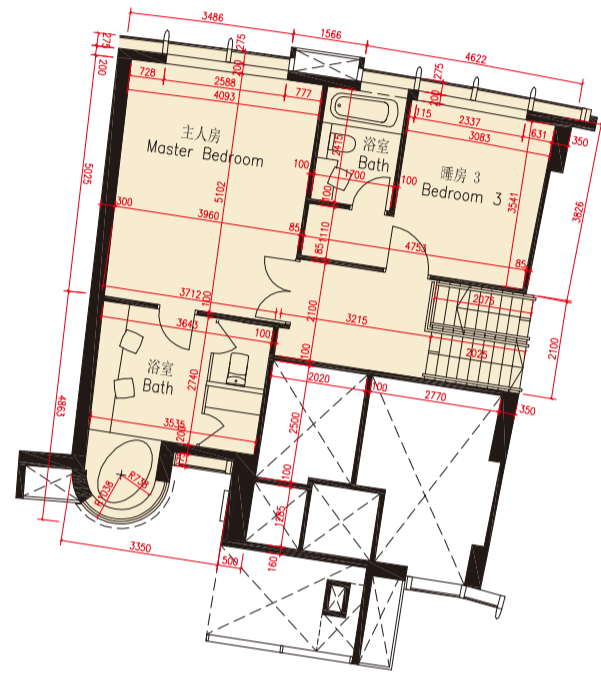
每個住宅物業 Each Residential Property	單位 Unit	A	B	C
	樓層 Floor			
樓板(不包括灰泥)的厚度(毫米) Thickness of Floor Slab (excluding plaster) (mm)	30/F	125, 150, 200, 250, 350	125, 150, 175, 250, 350	125, 200, 250, 300
層與層之間的高度(毫米) Floor-to-Floor Height (mm)		2750, 2820, 3020, 3200, 3620, 4000	2750, 2820, 3020, 3200, 3620, 4000	3620, 3820, 4000

因住宅物業的較高樓層的結構牆的厚度遞減，較高樓層的內部面積，一般比較低樓層的內部面積稍大。
The internal areas of the residential properties on the upper floors will generally be slightly larger than those on the lower floors because of the reducing thickness of the structural walls on the upper floors.

備註：平面圖之尺規所列數字為以毫米標示之建築結構尺寸。
Note: The dimensions of floor plans are all structural dimensions in millimeter.

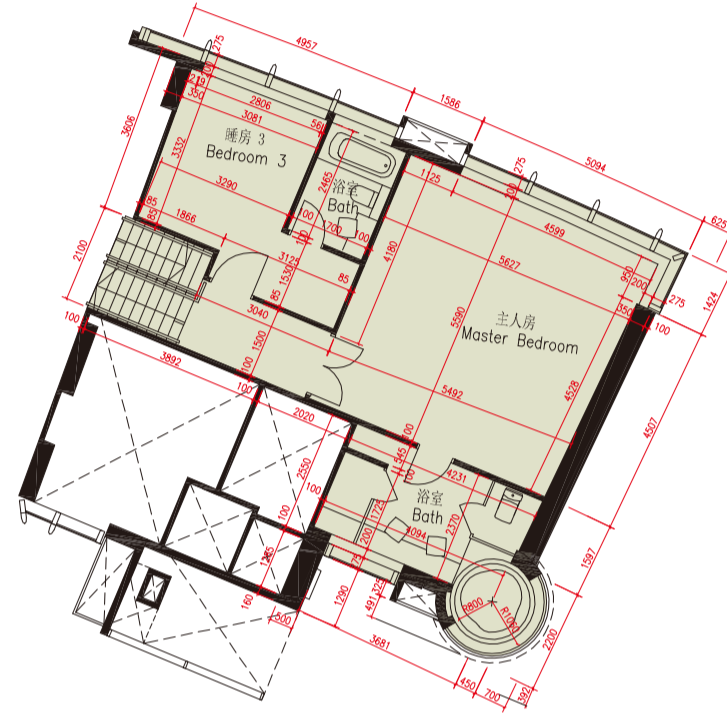
第1座 - 30樓B單位上層平面圖

Block 1 - Upper Part of Unit B, 30th Floor Plan



第1座 - 30樓A單位上層平面圖

Block 1 - Upper Part of Unit A, 30th Floor Plan



第1座 - 31樓平面圖

Block 1 - 31st Floor Plan



比例 SCALE : 0M(米) 5M(米)

每個住宅物業 Each Residential Property	單位 Unit	A	B
	樓層 Floor		
樓板(不包括灰泥)的厚度(毫米) Thickness of Floor Slab (excluding plaster) (mm)	30/F上層 Upper Part of 30/F	125, 150, 200	125, 150, 175
層與層之間的高度(毫米) Floor-to-Floor Height (mm)		2750, 2820, 3020, 3200	2750, 2820, 3020, 3025, 3200, 4000

因住宅物業的較高樓層的結構牆的厚度遞減，較高樓層的內部面積，一般比較低樓層的內部面積稍大。
The internal areas of the residential properties on the upper floors will generally be slightly larger than those on the lower floors because of the reducing thickness of the structural walls on the upper floors.

備註：平面圖之尺規所列數字為以毫米標示之建築結構尺寸。
Note: The dimensions of floor plans are all structural dimensions in millimeter.

比例 SCALE : 0M(米) 5M(米)

每個住宅物業 Each Residential Property	單位 Unit	A	B	C
	樓層 Floor			
樓板(不包括灰泥)的厚度(毫米) Thickness of Floor Slab (excluding plaster) (mm)	31/F	125, 150, 200, 250, 350	125, 150, 175, 200, 250, 350	125, 150, 175, 200, 250, 300
層與層之間的高度(毫米) Floor-to-Floor Height (mm)		3200, 3620, 4000	3200, 3620, 4000	4000

因住宅物業的較高樓層的結構牆的厚度遞減，較高樓層的內部面積，一般比較低樓層的內部面積稍大。
The internal areas of the residential properties on the upper floors will generally be slightly larger than those on the lower floors because of the reducing thickness of the structural walls on the upper floors.

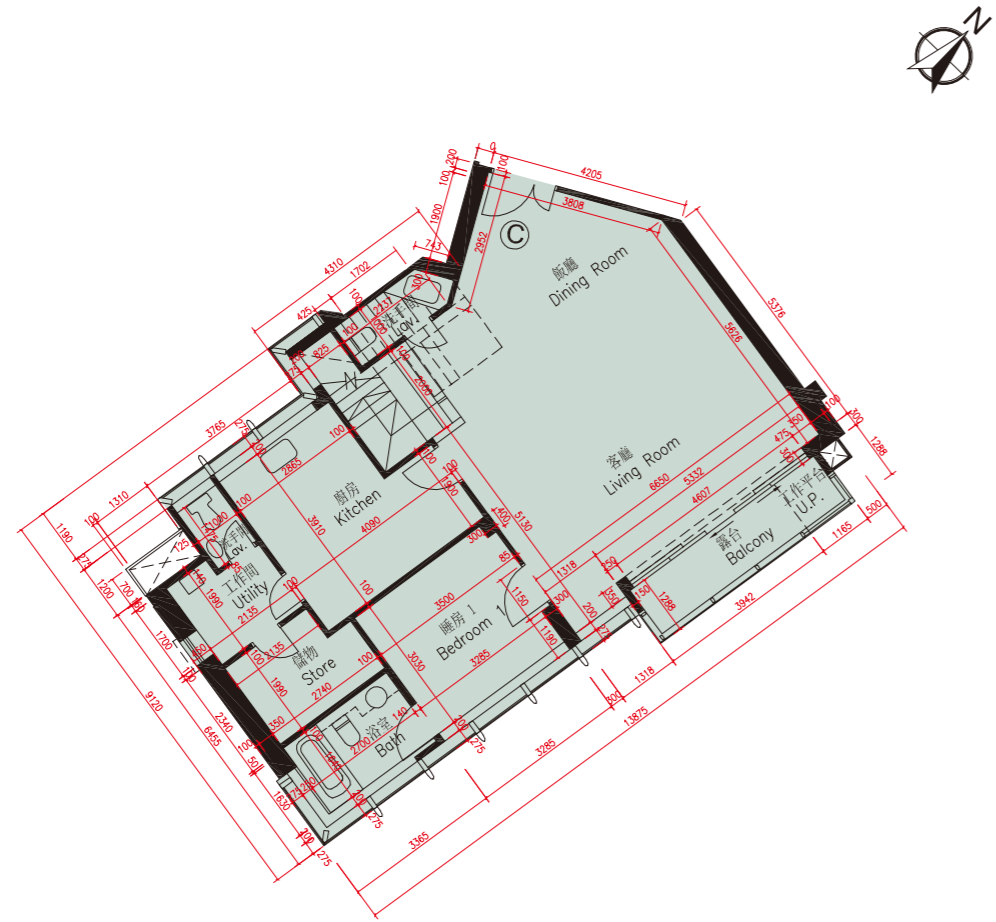
備註：平面圖之尺規所列數字為以毫米標示之建築結構尺寸。
Note: The dimensions of floor plans are all structural dimensions in millimeter.

第1座31樓C單位在發展項目落成後因進行小型工程或獲《建築物條例》豁免的工程而有所改動。該等改動大概位於本樓面平面圖中標出。
Unit C on 31/F, Block 1 has been altered by way of minor works or exempted works under the Buildings Ordinance after the completion of the Development. The approximate location of the alterations are indicated in this floor plan.

- (A) 門移位或改動，並以不同位置或不同設計之門取代。
Door relocated or altered and replaced by a door at a different location or different design.
- (B) 浴室原本的牆或裝置移位或改動，並以不同位置或不同設計之牆及裝置取代。
Original walls or fittings of bathroom are relocated or altered, replaced with walls or fittings with different location or different design.
- (C) 增設牆。
Wall added.

第1座 - 31樓C單位現狀平面圖
Block 1 - Unit C 31st Floor As-is Floor Plan

此版乃特意留白 This page is deliberately left in blank



比例 SCALE : 0M(米) 5M(米)

每個住宅物業 Each Residential Property	單位 Unit	C
	樓層 Floor	
樓板(不包括灰泥)的厚度(毫米) Thickness of Floor Slab (excluding plaster) (mm)	31/F	125, 150, 175, 200, 250, 300
層與層之間的高度(毫米) Floor-to-Floor Height (mm)		4000

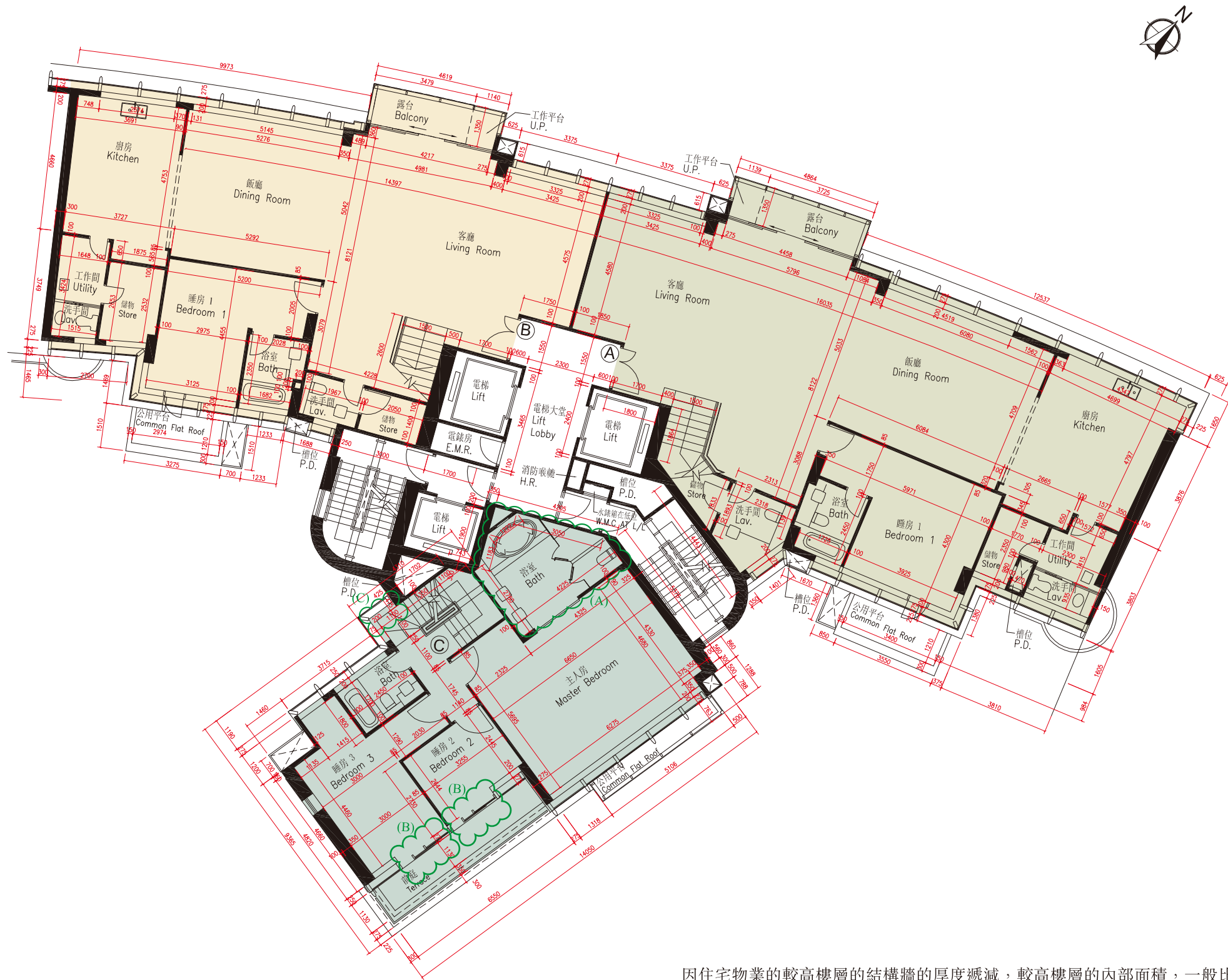
因住宅物業的較高樓層的結構牆的厚度遞減，較高樓層的內部面積，一般比較低樓層的內部面積稍大。
The internal areas of the residential properties on the upper floors will generally be slightly larger than those on the lower floors because of the reducing thickness of the structural walls on the upper floors.

備註：平面圖之尺規所列數字為以毫米標示之建築結構尺寸。
Note: The dimensions of floor plans are all structural dimensions in millimeter.

10 FLOOR PLANS OF RESIDENTIAL PROPERTIES IN THE DEVELOPMENT

發展項目的住宅物業的樓面平面圖

第1座 - 32樓平面圖
Block 1 - 32nd Floor Plan



比例 SCALE : 0M(米) 5M(米)

每個住宅物業 Each Residential Property	單位 Unit		
	A	B	C
樓板(不包括灰泥)的厚度(毫米) Thickness of Floor Slab (excluding plaster) (mm)	150, 200, 250, 275	150, 200, 250, 275	150, 175, 200, 300
層與層之間的高度(毫米) Floor-to-Floor Height (mm)	4000	4000	4000

因住宅物業的較高樓層的結構牆的厚度遞減，較高樓層的內部面積，一般比較低樓層的內部面積稍大。
The internal areas of the residential properties on the upper floors will generally be slightly larger than those on the lower floors because of the reducing thickness of the structural walls on the upper floors.

備註：平面圖之尺規所列數字為以毫米標示之建築結構尺寸。
Note: The dimensions of floor plans are all structural dimensions in millimeter.

第1座32樓C單位在發展項目落成後因進行小型工程或獲《建築物條例》豁免的工程而有所改動。該等改動大概位於本樓面平面圖中標出。
Unit C on 32/F, Block 1 has been altered by way of minor works or exempted works under the Buildings Ordinance after the completion of the Development. The approximate location of the alterations are indicated in this floor plan.

- (A) 浴室原本的牆或裝置移位或改動，並以不同位置或不同設計之牆及裝置取代。
Original walls or fittings of bathroom are relocated or altered, replaced with walls or fittings with different location or different design.
- (B) 門移位或改動，並以不同位置或不同設計之門取代。
Door relocated or altered and replaced by a door at a different location or different design.
- (C) 增設牆。
Wall added.

第1座 - 32樓C單位現狀平面圖
Block 1 - Unit C 32nd Floor As-is Floor Plan



比例 SCALE : 0M(米) 5M(米)

每個住宅物業 Each Residential Property	單位 Unit	
	C	
樓板(不包括灰泥)的厚度(毫米) Thickness of Floor Slab (excluding plaster) (mm)	150, 175, 200, 300	
層與層之間的高度(毫米) Floor-to-Floor Height (mm)	4000	

因住宅物業的較高樓層的結構牆的厚度遞減，較高樓層的內部面積，一般比較低樓層的內部面積稍大。
The internal areas of the residential properties on the upper floors will generally be slightly larger than those on the lower floors because of the reducing thickness of the structural walls on the upper floors.

備註：平面圖之尺規所列數字為以毫米標示之建築結構尺寸。
Note: The dimensions of floor plans are all structural dimensions in millimeter.

此版乃特意留白 This page is deliberately left in blank

第1座 - 33樓平面圖
Block 1 - 33rd Floor Plan



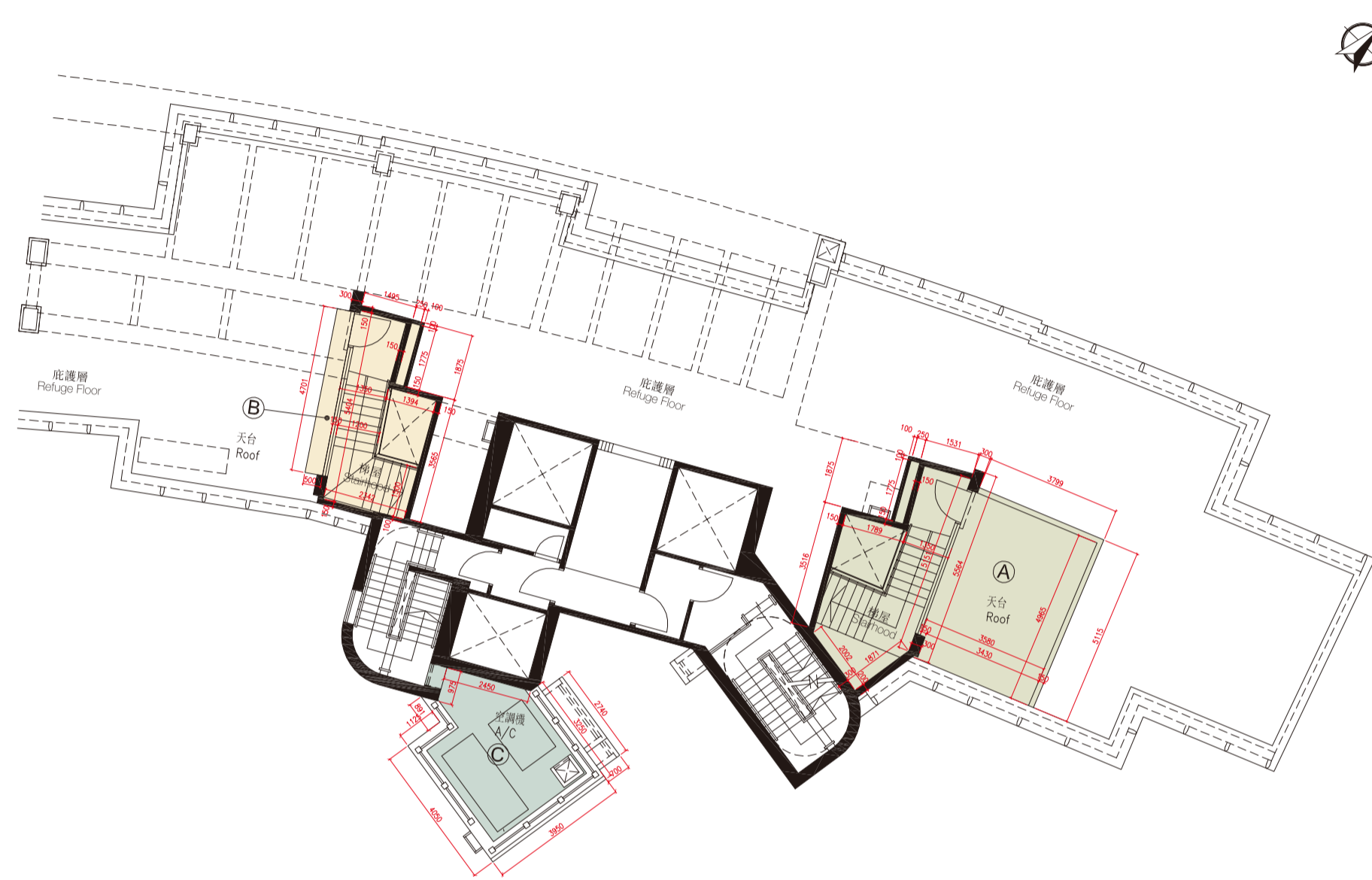
比例 SCALE : 0M(米) 5M(米)

每個住宅物業 Each Residential Property	單位 Unit	A	B	C
	樓層 Floor			
樓板(不包括灰泥)的厚度(毫米) Thickness of Floor Slab (excluding plaster) (mm)	33/F	150, 175, 200, 225	150, 175, 225, 250	不適用 Not Applicable
層與層之間的高度(毫米) Floor-to-Floor Height (mm)		4000	4000	

因住宅物業的較高樓層的結構牆的厚度遞減，較高樓層的內部面積，一般比較低樓層的內部面積稍大。
The internal areas of the residential properties on the upper floors will generally be slightly larger than those on the lower floors because of the reducing thickness of the structural walls on the upper floors.

備註：平面圖之尺規所列數字為以毫米標示之建築結構尺寸。
Note : The dimensions of floor plans are all structural dimensions in millimeter.

第1座 - 天台平面圖
Block 1 - Roof Plan



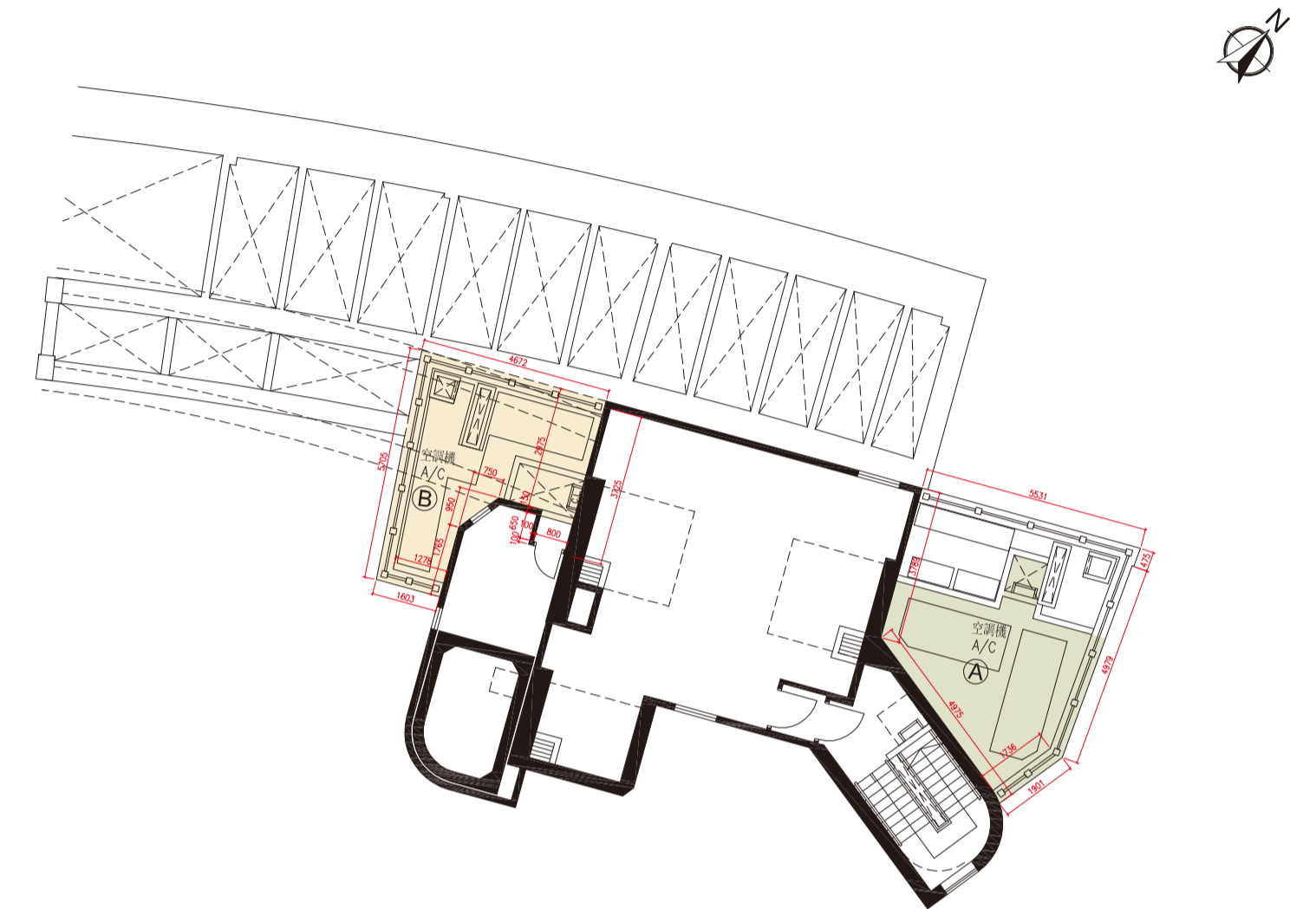
比例 SCALE : 0M(米) 5M(米)

每個住宅物業 Each Residential Property	單位 Unit			
	樓層 Floor	A	B	C
樓板(不包括灰泥)的厚度(毫米) Thickness of Floor Slab (excluding plaster) (mm)	天台 Roof	不適用 Not Applicable		
層與層之間的高度(毫米) Floor-to-Floor Height (mm)				

因住宅物業的較高樓層的結構牆的厚度遞減，較高樓層的內部面積，一般比較低樓層的內部面積稍大。
The internal areas of the residential properties on the upper floors will generally be slightly larger than those on the lower floors because of the reducing thickness of the structural walls on the upper floors.

備註：平面圖之尺規所列數字為以毫米標示之建築結構尺寸。
Note : The dimensions of floor plans are all structural dimensions in millimeter.

第1座 - 高層天台平面圖
Block 1 - Upper Roof Plan



比例 SCALE : 0M(米) 5M(米)

每個住宅物業 Each Residential Property	單位 Unit		
	樓層 Floor	A	B
樓板(不包括灰泥)的厚度(毫米) Thickness of Floor Slab (excluding plaster) (mm)	高層天台 Upper Roof	不適用 Not Applicable	
層與層之間的高度(毫米) Floor-to-Floor Height (mm)			

因住宅物業的較高樓層的結構牆的厚度遞減，較高樓層的內部面積，一般比較低樓層的內部面積稍大。
The internal areas of the residential properties on the upper floors will generally be slightly larger than those on the lower floors because of the reducing thickness of the structural walls on the upper floors.

備註：平面圖之尺規所列數字為以毫米標示之建築結構尺寸。
Note : The dimensions of floor plans are all structural dimensions in millimeter.

10 FLOOR PLANS OF RESIDENTIAL PROPERTIES IN THE DEVELOPMENT

發展項目的住宅物業的樓面平面圖

第2座 - 5樓平面圖
Block 2 - 5th Floor Plan



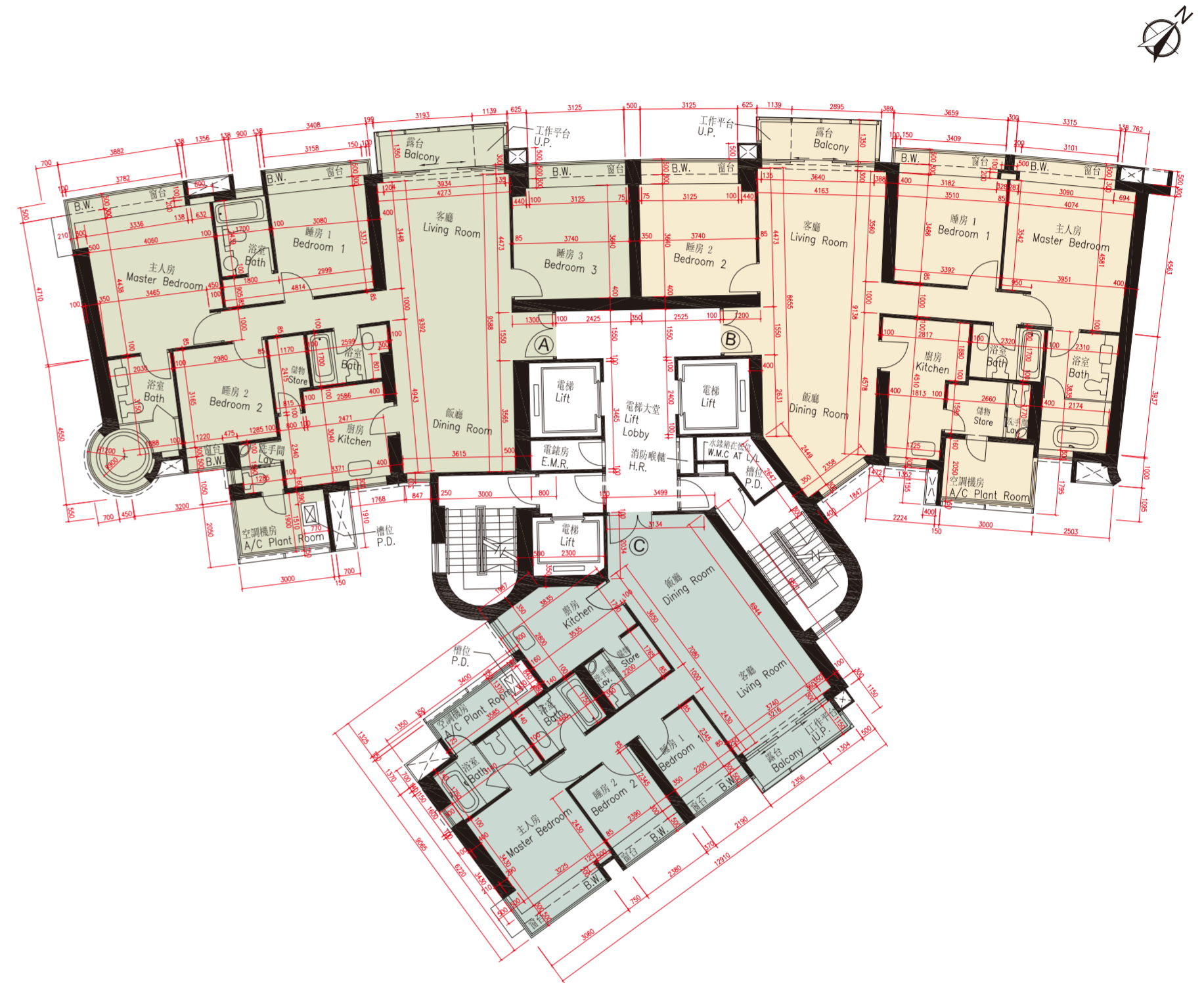
比例 SCALE : 0M(米) 5M(米)

每個住宅物業 Each Residential Property	單位 Unit	
	A	B
樓板(不包括灰泥)的厚度(毫米) Thickness of Floor Slab (excluding plaster) (mm)	125, 150, 175, 250, 350	125, 150, 175, 250, 350
層與層之間的高度(毫米) Floor-to-Floor Height (mm)	2850, 2920, 3120, 3300	2920, 3120, 3300

因住宅物業的較高樓層的結構牆的厚度遞減，較高樓層的內部面積，一般比較低樓層的內部面積稍大。
The internal areas of the residential properties on the upper floors will generally be slightly larger than those on the lower floors because of the reducing thickness of the structural walls on the upper floors.

備註：平面圖之尺規所列數字為以毫米標示之建築結構尺寸。
Note: The dimensions of floor plans are all structural dimensions in millimeter.

第2座 - 6樓、7樓、11樓至13樓平面圖
Block 2 - 6th, 7th, 11th to 13th Floor Plan



比例 SCALE : 0M(米) 5M(米)

每個住宅物業 Each Residential Property	單位 Unit		
	A	B	C
樓板(不包括灰泥)的厚度(毫米) Thickness of Floor Slab (excluding plaster) (mm)	125, 150, 175, 250, 350	125, 150, 175, 250, 350	125, 150, 200, 250, 300
層與層之間的高度(毫米) Floor-to-Floor Height (mm)	2850, 2920, 3120, 3300	2920, 3120, 3300	2920, 3300

因住宅物業的較高樓層的結構牆的厚度遞減，較高樓層的內部面積，一般比較低樓層的內部面積稍大。
The internal areas of the residential properties on the upper floors will generally be slightly larger than those on the lower floors because of the reducing thickness of the structural walls on the upper floors.

備註：平面圖之尺規所列數字為以毫米標示之建築結構尺寸。
Note: The dimensions of floor plans are all structural dimensions in millimeter.

第2座 - 8樓至10樓平面圖
Block 2 - 8th to 10th Floor Plan



比例 SCALE : 0M(米) 5M(米)

每個住宅物業 Each Residential Property	單位 Unit	A	B	C
	樓層 Floor			
樓板(不包括灰泥)的厚度(毫米) Thickness of Floor Slab (excluding plaster) (mm)	8/F - 10/F	125, 150, 175, 250, 350	125, 150, 175, 250, 350	125, 150, 200, 250, 300
層與層之間的高度(毫米) Floor-to-Floor Height (mm)		2850, 2920, 3120, 3300	2920, 3120, 3300	2920, 3300

因住宅物業的較高樓層的結構牆的厚度遞減，較高樓層的內部面積，一般比較低樓層的內部面積稍大。
The internal areas of the residential properties on the upper floors will generally be slightly larger than those on the lower floors because of the reducing thickness of the structural walls on the upper floors.

備註：平面圖之尺規所列數字為以毫米標示之建築結構尺寸。
Note: The dimensions of floor plans are all structural dimensions in millimeter.

第2座 - 15樓至17樓及21樓至23樓平面圖
Block 2 - 15th to 17th & 21st to 23rd Floor Plan



比例 SCALE : 0M(米) 5M(米)

每個住宅物業 Each Residential Property	單位 Unit	A	B	C
	樓層 Floor			
樓板(不包括灰泥)的厚度(毫米) Thickness of Floor Slab (excluding plaster) (mm)	15/F - 17/F & 21/F - 23/F	125, 150, 175, 250, 350	125, 150, 175, 250, 350	125, 150, 200, 250, 300
層與層之間的高度(毫米) Floor-to-Floor Height (mm)		2850, 2920, 3120, 3300	2920, 3120, 3300	2920, 3300

因住宅物業的較高樓層的結構牆的厚度遞減，較高樓層的內部面積，一般比較低樓層的內部面積稍大。
The internal areas of the residential properties on the upper floors will generally be slightly larger than those on the lower floors because of the reducing thickness of the structural walls on the upper floors.

備註：平面圖之尺規所列數字為以毫米標示之建築結構尺寸。
Note: The dimensions of floor plans are all structural dimensions in millimeter.

第2座 - 18樓至20樓及25樓平面圖
Block 2 - 18th to 20th & 25th Floor Plan



比例 SCALE : 0M(米) 5M(米)

每個住宅物業 Each Residential Property	單位 Unit	A	B	C
	樓層 Floor			
樓板(不包括灰泥)的厚度(毫米) Thickness of Floor Slab (excluding plaster) (mm)	18/F - 20/F & 25/F	125, 150, 175, 250, 350	125, 150, 175, 250, 350	125, 150, 200, 250, 300
層與層之間的高度(毫米) Floor-to-Floor Height (mm)		2850, 2920, 3120, 3300	2920, 3120, 3300	2920, 3300

因住宅物業的較高樓層的結構牆的厚度遞減，較高樓層的內部面積，一般比較低樓層的內部面積稍大。
The internal areas of the residential properties on the upper floors will generally be slightly larger than those on the lower floors because of the reducing thickness of the structural walls on the upper floors.

備註：平面圖之尺規所列數字為以毫米標示之建築結構尺寸。
Note: The dimensions of floor plans are all structural dimensions in millimeter.

第2座 - 26樓至27樓平面圖
Block 2 - 26th to 27th Floor Plan



比例 SCALE : 0M(米) 5M(米)

每個住宅物業 Each Residential Property	單位 Unit	A	B	C
	樓層 Floor			
樓板(不包括灰泥)的厚度(毫米) Thickness of Floor Slab (excluding plaster) (mm)	26/F - 27/F	125, 150, 175, 250, 350	125, 150, 175, 250, 350	125, 150, 200, 250, 300
層與層之間的高度(毫米) Floor-to-Floor Height (mm)		2850, 2920, 3120, 3300	2920, 3120, 3300	2920, 3300

因住宅物業的較高樓層的結構牆的厚度遞減，較高樓層的內部面積，一般比較低樓層的內部面積稍大。
The internal areas of the residential properties on the upper floors will generally be slightly larger than those on the lower floors because of the reducing thickness of the structural walls on the upper floors.

備註：平面圖之尺規所列數字為以毫米標示之建築結構尺寸。
Note: The dimensions of floor plans are all structural dimensions in millimeter.

第2座 - 28樓平面圖
Block 2 - 28th Floor Plan



比例 SCALE : 0M(米) 5M(米)

每個住宅物業 Each Residential Property	單位 Unit	A	B	C
	樓層 Floor			
樓板(不包括灰泥)的厚度(毫米) Thickness of Floor Slab (excluding plaster) (mm)	28/F	125, 150, 175, 250, 350	125, 150, 175, 250, 350	125, 150, 200, 250, 300
層與層之間的高度(毫米) Floor-to-Floor Height (mm)		2750, 2820, 3020, 3200, 4000	2920, 3020, 3200, 4000	3620, 4000

因住宅物業的較高樓層的結構牆的厚度遞減，較高樓層的內部面積，一般比較低樓層的內部面積稍大。
The internal areas of the residential properties on the upper floors will generally be slightly larger than those on the lower floors because of the reducing thickness of the structural walls on the upper floors.

備註：平面圖之尺規所列數字為以毫米標示之建築結構尺寸。
Note: The dimensions of floor plans are all structural dimensions in millimeter.

第2座 - 29樓平面圖
Block 2 - 29th Floor Plan



比例 SCALE : 0M(米) 5M(米)

每個住宅物業 Each Residential Property	單位 Unit	A	B	C
	樓層 Floor			
樓板(不包括灰泥)的厚度(毫米) Thickness of Floor Slab (excluding plaster) (mm)	29/F	125, 150, 175, 250, 350	125, 150, 175, 250, 350	125, 150, 200, 250, 300
層與層之間的高度(毫米) Floor-to-Floor Height (mm)		2750, 2820, 3020, 3200, 4000	2820, 3020, 3200, 4000	3550, 4000

因住宅物業的較高樓層的結構牆的厚度遞減，較高樓層的內部面積，一般比較低樓層的內部面積稍大。
The internal areas of the residential properties on the upper floors will generally be slightly larger than those on the lower floors because of the reducing thickness of the structural walls on the upper floors.

備註：平面圖之尺規所列數字為以毫米標示之建築結構尺寸。
Note: The dimensions of floor plans are all structural dimensions in millimeter.

第2座 - 30樓平面圖
Block 2 - 30th Floor Plan



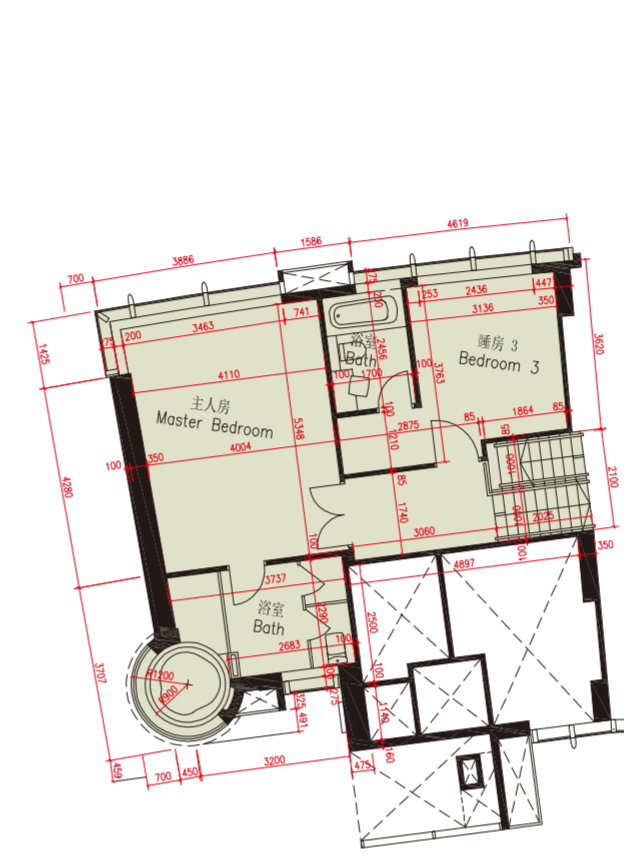
比例 SCALE : 0M(米) 5M(米)

每個住宅物業 Each Residential Property	單位 Unit			
	樓層 Floor	A	B	C
樓板(不包括灰泥)的厚度(毫米) Thickness of Floor Slab (excluding plaster) (mm)	30/F	125, 150, 175, 250, 350	125, 150, 175, 250, 350	125, 175, 200, 250, 300
層與層之間的高度(毫米) Floor-to-Floor Height (mm)		2750, 2820, 3020, 3200, 3620, 4000	2820, 3020, 3200, 4000	3620, 3720, 4000

因住宅物業的較高樓層的結構牆的厚度遞減，較高樓層的內部面積，一般比較低樓層的內部面積稍大。
The internal areas of the residential properties on the upper floors will generally be slightly larger than those on the lower floors because of the reducing thickness of the structural walls on the upper floors.

備註：平面圖之尺規所列數字為以毫米標示之建築結構尺寸。
Note: The dimensions of floor plans are all structural dimensions in millimeter.

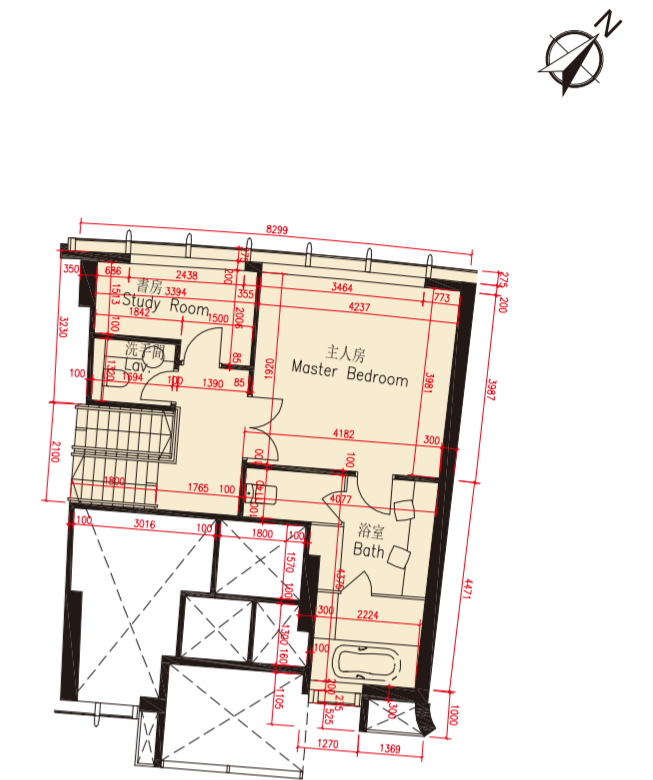
第2座 - 30樓A單位上層平面圖
Block 2 - Upper Part of Unit A, 30th Floor Plan



比例 SCALE : 0M(米) 5M(米)

每個住宅物業 Each Residential Property	單位 Unit		
	樓層 Floor	A	B
樓板(不包括灰泥)的厚度(毫米) Thickness of Floor Slab (excluding plaster) (mm)	30/F上層 Upper Part of 30/F	125, 150, 175	125, 150, 175
層與層之間的高度(毫米) Floor-to-Floor Height (mm)		2750, 2820, 3020, 3200	3020, 3200

第2座 - 30樓B單位上層平面圖
Block 2 - Upper Part of Unit B, 30th Floor Plan



因住宅物業的較高樓層的結構牆的厚度遞減，較高樓層的內部面積，一般比較低樓層的內部面積稍大。
The internal areas of the residential properties on the upper floors will generally be slightly larger than those on the lower floors because of the reducing thickness of the structural walls on the upper floors.

備註：平面圖之尺規所列數字為以毫米標示之建築結構尺寸。
Note: The dimensions of floor plans are all structural dimensions in millimeter.

10 FLOOR PLANS OF RESIDENTIAL PROPERTIES IN THE DEVELOPMENT

發展項目的住宅物業的樓面平面圖

第2座 - 31樓平面圖
Block 2 - 31st Floor Plan



比例 SCALE : 0M(米) 5M(米)

每個住宅物業 Each Residential Property	單位 Unit	A	B	C
	樓層 Floor			
樓板(不包括灰泥)的厚度(毫米) Thickness of Floor Slab (excluding plaster) (mm)	31/F	125, 150, 175, 250, 350	125, 150, 175, 250, 300	125, 150, 175, 200, 250, 275, 300
層與層之間的高度(毫米) Floor-to-Floor Height (mm)		3200, 3620, 4000	2820, 3200, 3620, 4000	4000

因住宅物業的較高樓層的結構牆的厚度遞減，較高樓層的內部面積，一般比較低樓層的內部面積稍大。

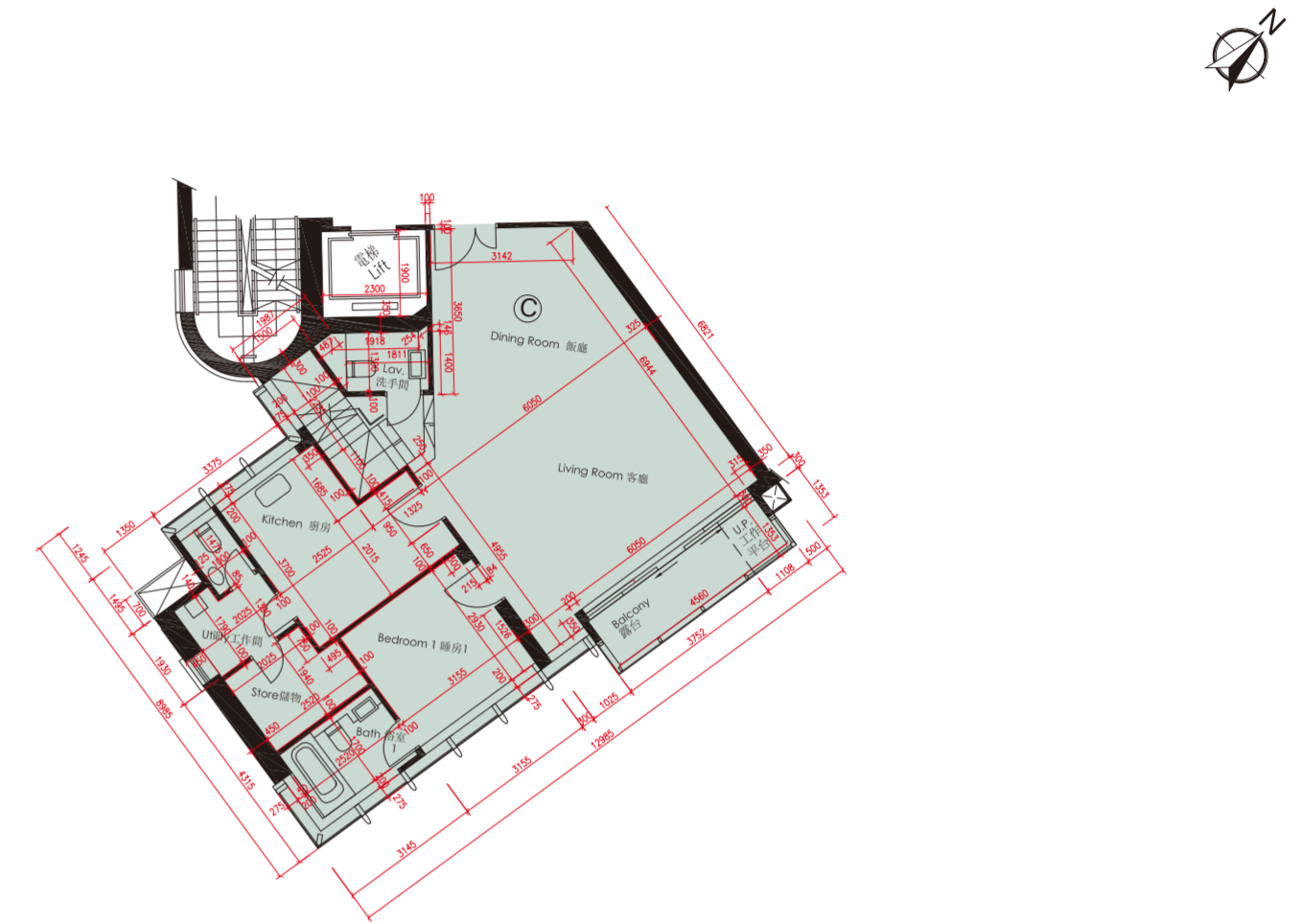
The internal areas of the residential properties on the upper floors will generally be slightly larger than those on the lower floors because of the reducing thickness of the structural walls on the upper floors.

備註：平面圖之尺規所列數字為以毫米標示之建築結構尺寸。
Note : The dimensions of floor plans are all structural dimensions in millimeter.

第2座31樓C單位在發展項目落成後因進行小型工程或獲《建築物條例》豁免的工程而有所改動。該等改動大概位於本樓面平面圖中標出。
Unit C on 31/F, Block 2 has been altered by way of minor works or exempted works under the Buildings Ordinance after the completion of the Development. The approximate location of the alterations are indicated in this floor plan.

(A) 門移位或改動，並以不同位置或不同設計之門取代。
Door relocated or altered and replaced by a door at a different location or different design.

第2座 - 31樓C單位現狀平面圖
Block 2 - Unit C 31st Floor As-is Floor Plan



比例 SCALE : 0M(米) 5M(米)

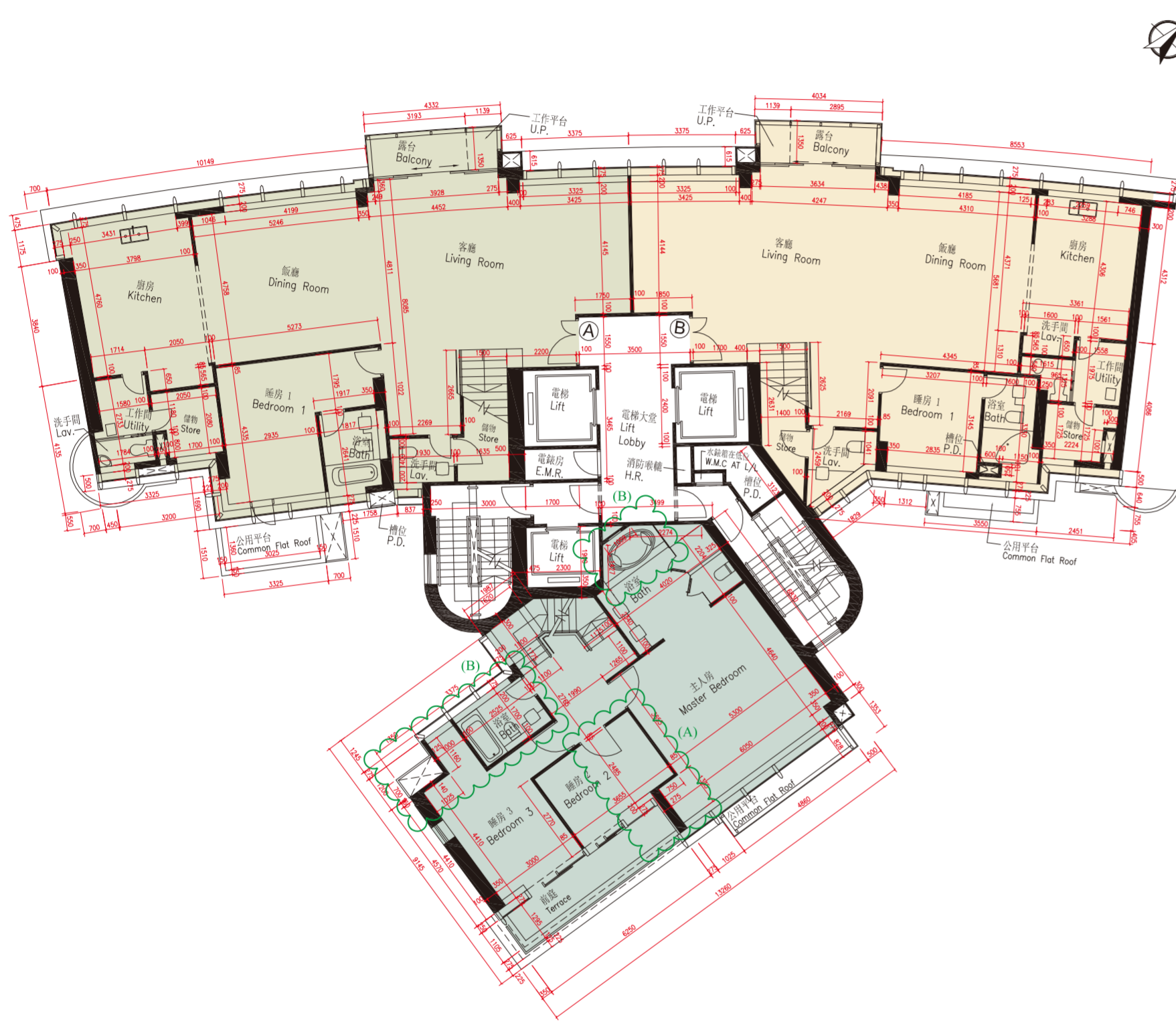
每個住宅物業 Each Residential Property	單位 Unit	C
	樓層 Floor	
樓板(不包括灰泥)的厚度(毫米) Thickness of Floor Slab (excluding plaster) (mm)	31/F	125, 150, 175, 200, 250, 275, 300
層與層之間的高度(毫米) Floor-to-Floor Height (mm)		4000

因住宅物業的較高樓層的結構牆的厚度遞減，較高樓層的內部面積，一般比較低樓層的內部面積稍大。

The internal areas of the residential properties on the upper floors will generally be slightly larger than those on the lower floors because of the reducing thickness of the structural walls on the upper floors.

備註：平面圖之尺規所列數字為以毫米標示之建築結構尺寸。
Note : The dimensions of floor plans are all structural dimensions in millimeter.

第2座 - 32樓平面圖
Block 2 - 32nd Floor Plan



比例 SCALE : 0M(米) 5M(米)

每個住宅物業 Each Residential Property	單位 Unit	A	B	C
	樓層 Floor			
樓板(不包括灰泥)的厚度(毫米) Thickness of Floor Slab (excluding plaster) (mm)	32/F	150, 200, 250, 275	150, 200, 250, 275	150, 175, 200, 300
層與層之間的高度(毫米) Floor-to-Floor Height (mm)		4000	4000	4000

因住宅物業的較高樓層的結構牆的厚度遞減，較高樓層的內部面積，一般比較低樓層的內部面積稍大。

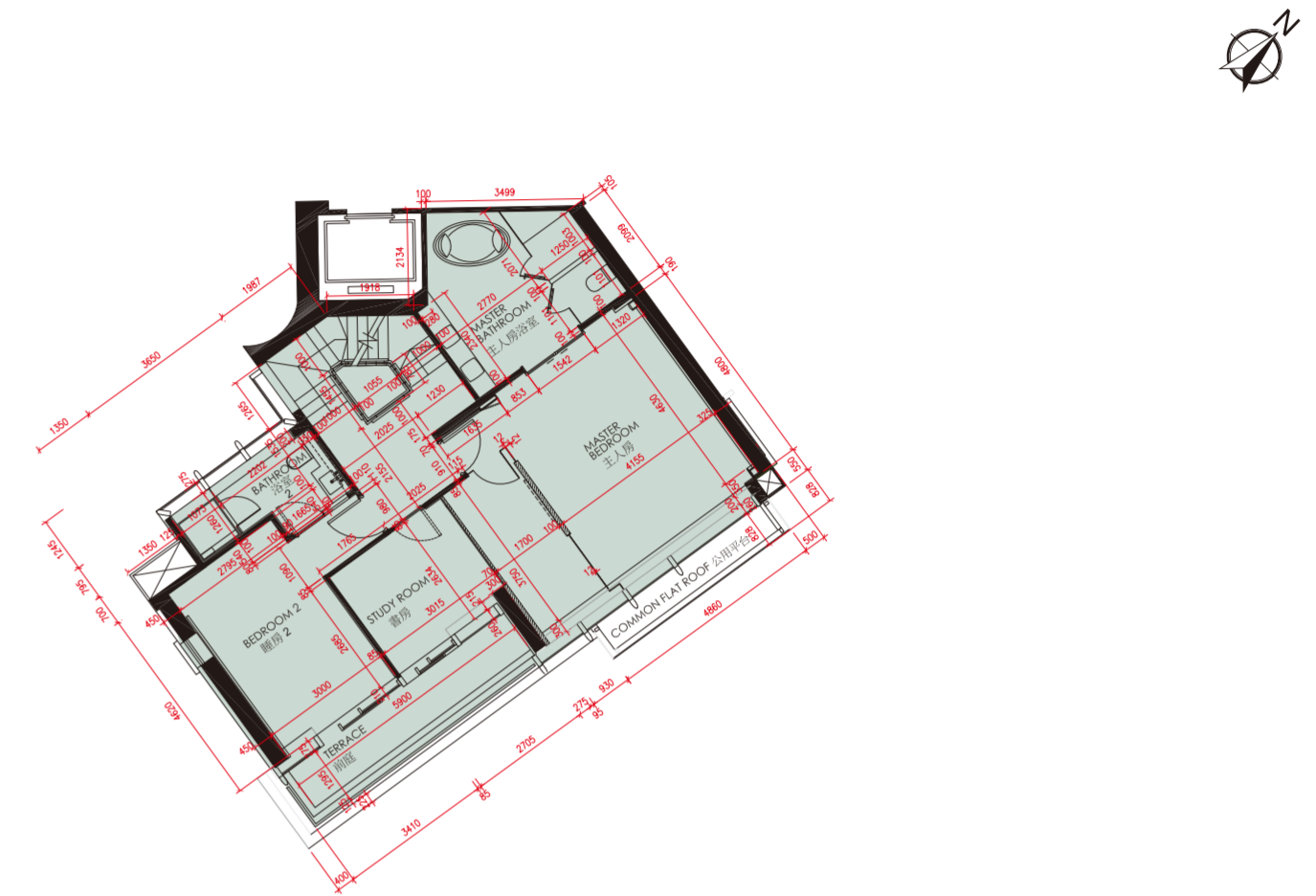
The internal areas of the residential properties on the upper floors will generally be slightly larger than those on the lower floors because of the reducing thickness of the structural walls on the upper floors.

備註：平面圖之尺規所列數字為以毫米標示之建築結構尺寸。
Note: The dimensions of floor plans are all structural dimensions in millimeter.

第2座32樓C單位在發展項目落成後因進行小型工程或獲《建築物條例》豁免的工程而有所改動。該等改動大概位於本樓面平面圖中標出。
Unit C on 32/F, Block 2 has been altered by way of minor works or exempted works under the Buildings Ordinance after the completion of the Development. The approximate location of the alterations are indicated in this floor plan.

- (A) 內牆移位或改動，並以不同位置或不同設計之內牆取代。
Internal partition walls relocated or altered and replaced by another internal partition walls at different location or different design.
- (B) 浴室原本的牆或裝置移位或改動，並以不同位置或不同設計之牆及裝置取代。
Original walls or fittings of bathroom are relocated or altered, replaced with walls or fittings with different location or different design.

第2座 - 32樓C單位現狀平面圖
Block 2 - Unit C 32nd Floor As-is Floor Plan



比例 SCALE : 0M(米) 5M(米)

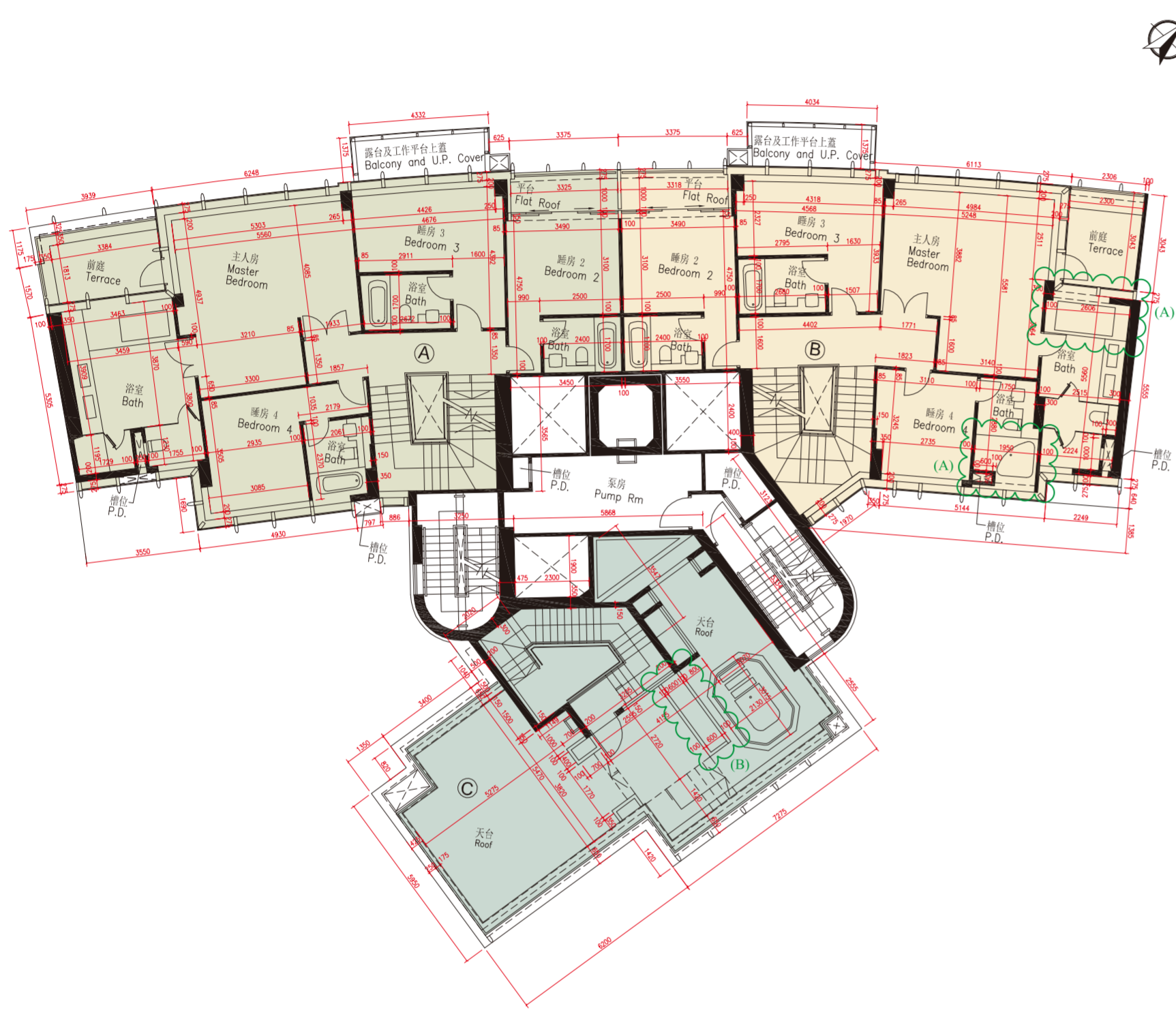
每個住宅物業 Each Residential Property	單位 Unit	C
	樓層 Floor	
樓板(不包括灰泥)的厚度(毫米) Thickness of Floor Slab (excluding plaster) (mm)	32/F	150, 175, 200, 300
層與層之間的高度(毫米) Floor-to-Floor Height (mm)		4000

因住宅物業的較高樓層的結構牆的厚度遞減，較高樓層的內部面積，一般比較低樓層的內部面積稍大。

The internal areas of the residential properties on the upper floors will generally be slightly larger than those on the lower floors because of the reducing thickness of the structural walls on the upper floors.

備註：平面圖之尺規所列數字為以毫米標示之建築結構尺寸。
Note: The dimensions of floor plans are all structural dimensions in millimeter.

第2座 - 33樓平面圖
Block 2 - 33rd Floor Plan



比例 SCALE : 0M(米) 5M(米)

每個住宅物業 Each Residential Property	單位 Unit	A	B	C
	樓層 Floor			
樓板(不包括灰泥)的厚度(毫米) Thickness of Floor Slab (excluding plaster) (mm)	33/F	150, 175, 200, 225	150, 175, 200, 225	不適用 Not Applicable
層與層之間的高度(毫米) Floor-to-Floor Height (mm)		4000	4000	

因住宅物業的較高樓層的結構牆的厚度遞減，較高樓層的內部面積，一般比較低樓層的內部面積稍大。

The internal areas of the residential properties on the upper floors will generally be slightly larger than those on the lower floors because of the reducing thickness of the structural walls on the upper floors.

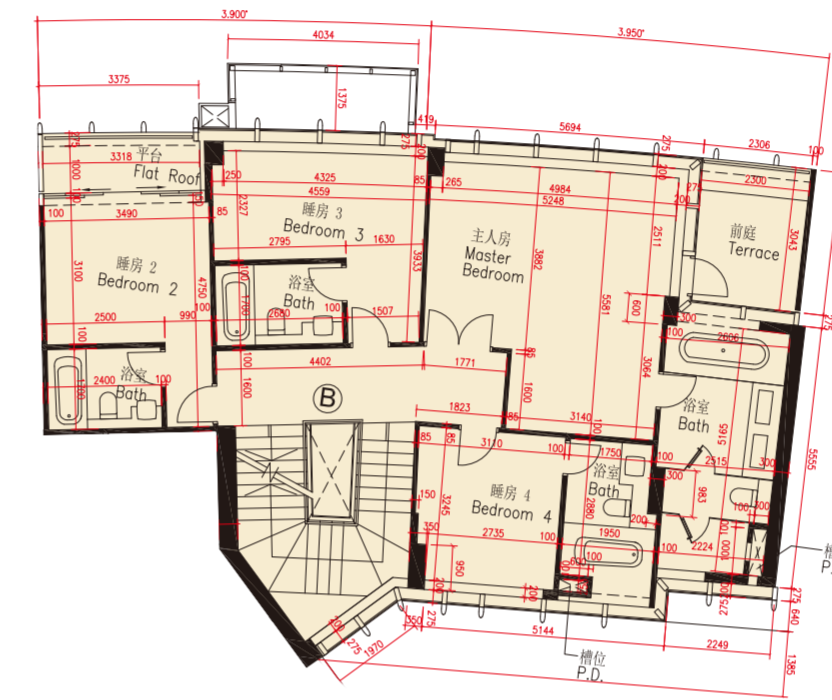
備註：平面圖之尺規所列數字為以毫米標示之建築結構尺寸。
Note: The dimensions of floor plans are all structural dimensions in millimeter.

第2座33樓B單位及第2座天台C單位在發展項目落成後因進行小型工程或獲《建築物條例》豁免的工程而有所改動。該等改動大概位置於本樓面平面圖中標出。
Unit B on 33/F and Unit C on the roof, Block 2 have been altered by way of minor works or exempted works under the Buildings Ordinance after the completion of the Development. The approximate location of the alterations are indicated in this floor plan.

(A) 浴室原本的牆或裝置移位或改動，並以不同位置或不同設計之牆及裝置取代。
Original walls or fittings of bathroom are relocated or altered, replaced with walls or fittings with different location or different design.

(B) 花槽移位。
Relocation of planters.

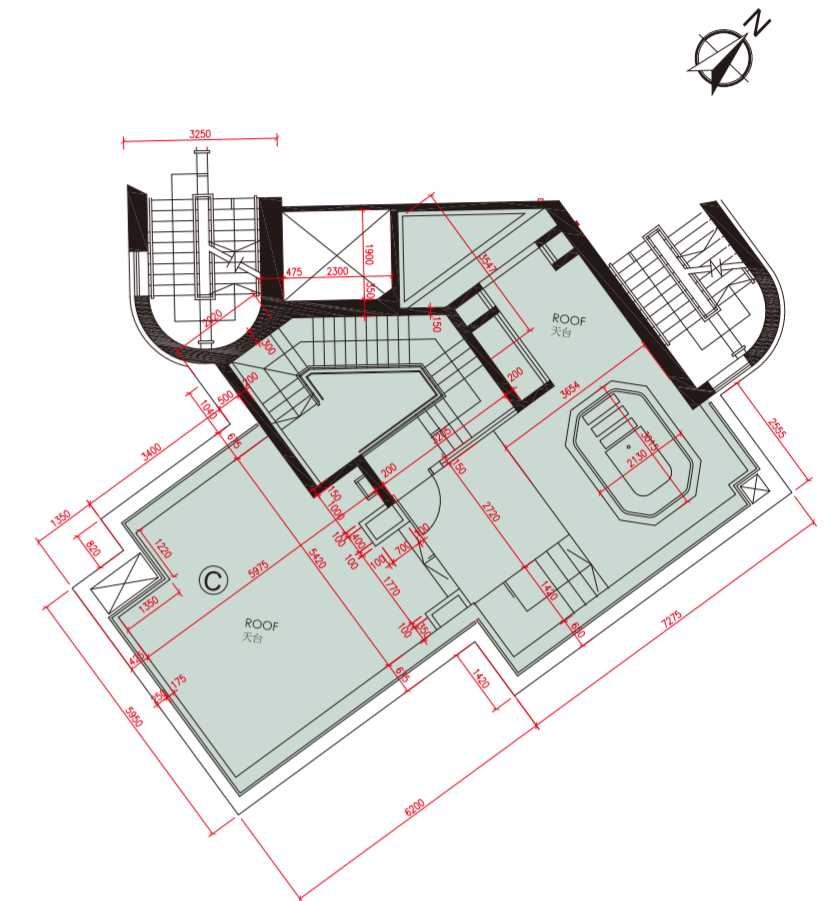
第2座 - 33樓B單位現狀平面圖
Block 2 - Unit B 33rd Floor As-is Floor Plan



比例 SCALE : 0M(米) 5M(米)

每個住宅物業 Each Residential Property	單位 Unit	B	C
	樓層 Floor		
樓板(不包括灰泥)的厚度(毫米) Thickness of Floor Slab (excluding plaster) (mm)	33/F	150, 175, 200, 225	不適用 Not Applicable
層與層之間的高度(毫米) Floor-to-Floor Height (mm)		4000	

第2座 - C單位天台現狀平面圖
Block 2 - The roof on Unit C As-is Floor Plan

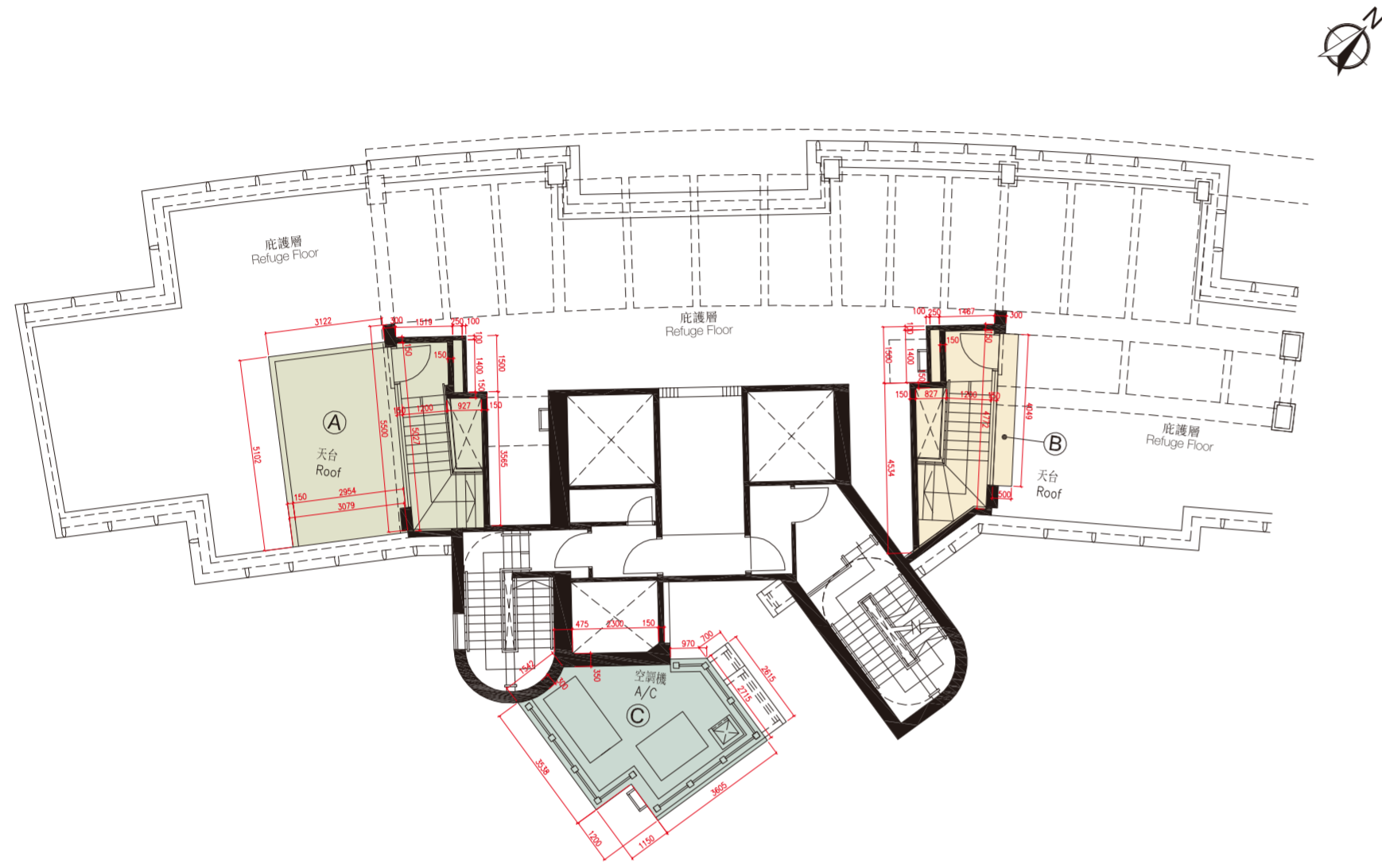


因住宅物業的較高樓層的結構牆的厚度遞減，較高樓層的內部面積，一般比較低樓層的內部面積稍大。

The internal areas of the residential properties on the upper floors will generally be slightly larger than those on the lower floors because of the reducing thickness of the structural walls on the upper floors.

備註：平面圖之尺規所列數字為以毫米標示之建築結構尺寸。
Note: The dimensions of floor plans are all structural dimensions in millimeter.

第2座 - 天台平面圖
Block 2 - Roof Plan



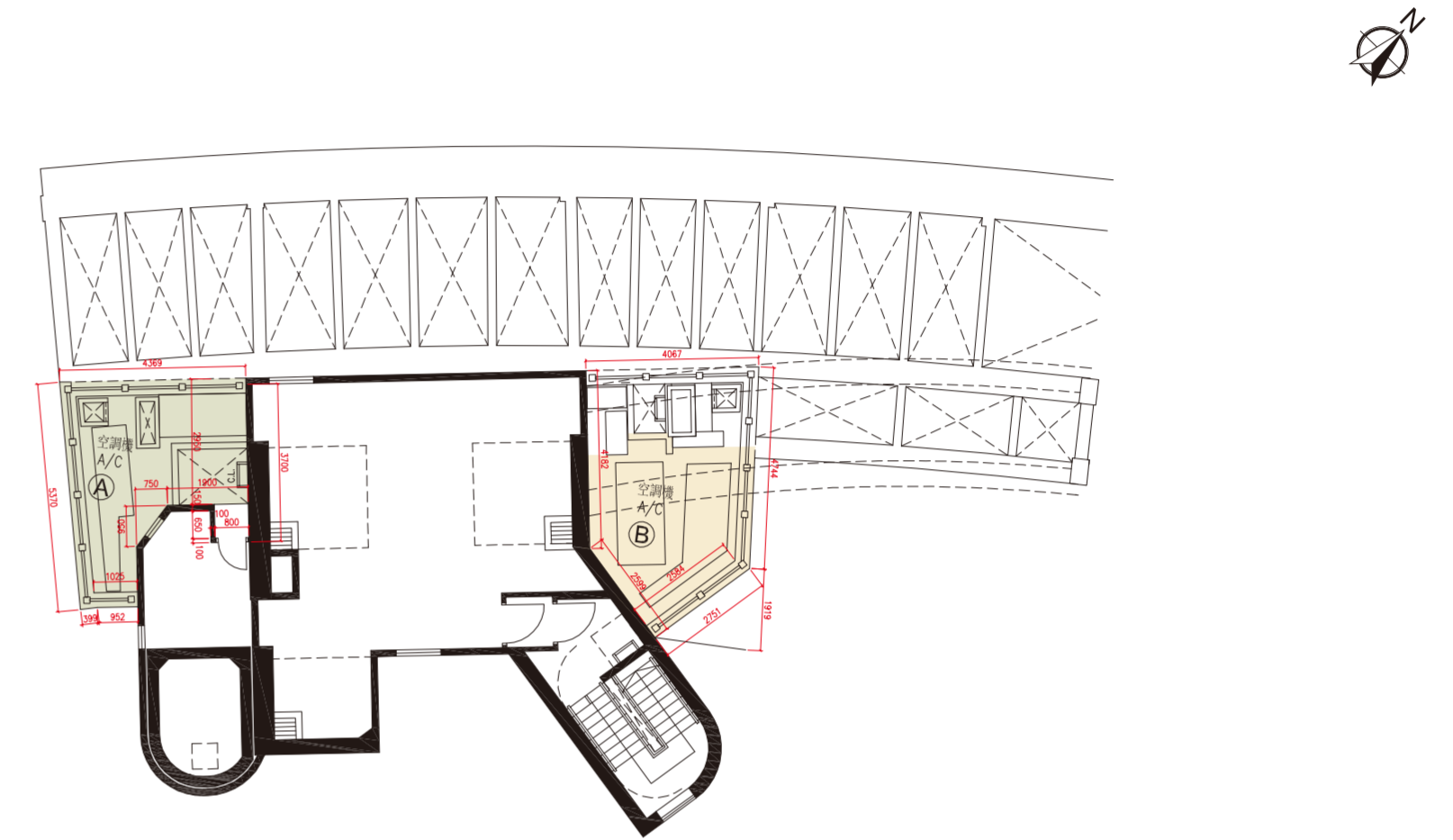
比例 SCALE : 0M(米) 5M(米)

每個住宅物業 Each Residential Property	單位 Unit	A	B	C
	樓層 Floor			
樓板(不包括灰泥)的厚度(毫米) Thickness of Floor Slab (excluding plaster) (mm)	天台 Roof	不適用 Not Applicable		
層與層之間的高度(毫米) Floor-to-Floor Height (mm)				

因住宅物業的較高樓層的結構牆的厚度遞減，較高樓層的內部面積，一般比較低樓層的內部面積稍大。
The internal areas of the residential properties on the upper floors will generally be slightly larger than those on the lower floors because of the reducing thickness of the structural walls on the upper floors.

備註：平面圖之尺規所列數字為以毫米標示之建築結構尺寸。
Note: The dimensions of floor plans are all structural dimensions in millimeter.

第2座 - 高層天台平面圖
Block 2 - Upper Roof Plan



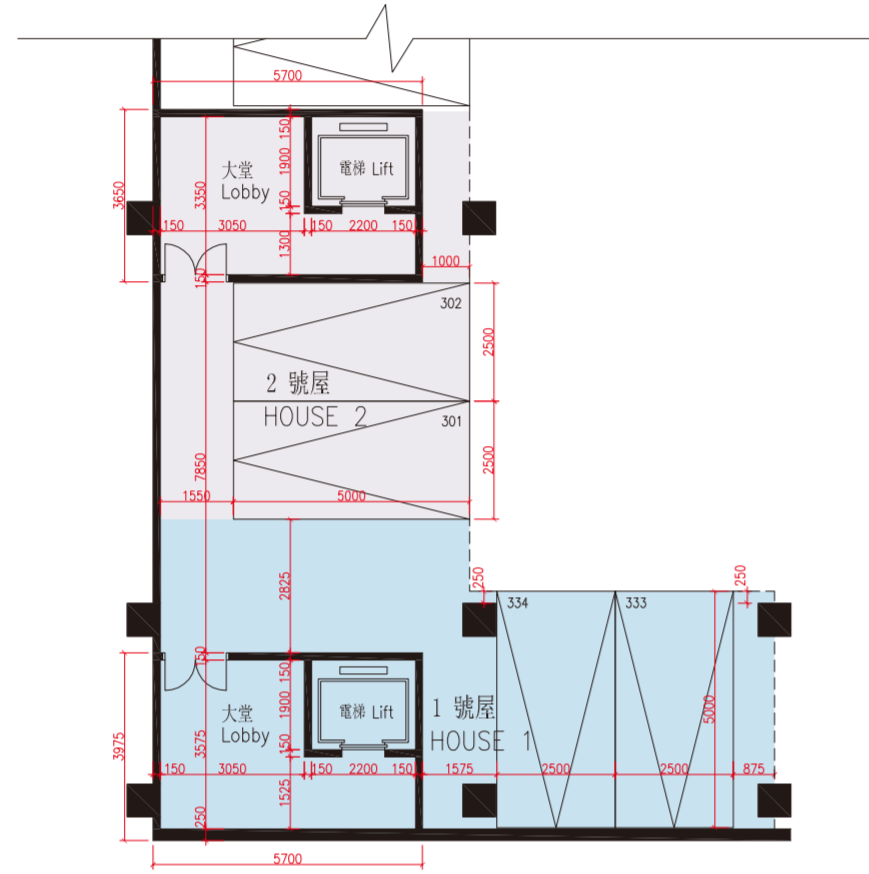
比例 SCALE : 0M(米) 5M(米)

每個住宅物業 Each Residential Property	單位 Unit	A	B
	樓層 Floor		
樓板(不包括灰泥)的厚度(毫米) Thickness of Floor Slab (excluding plaster) (mm)	高層天台 Upper Roof	不適用 Not Applicable	
層與層之間的高度(毫米) Floor-to-Floor Height (mm)			

因住宅物業的較高樓層的結構牆的厚度遞減，較高樓層的內部面積，一般比較低樓層的內部面積稍大。
The internal areas of the residential properties on the upper floors will generally be slightly larger than those on the lower floors because of the reducing thickness of the structural walls on the upper floors.

備註：平面圖之尺規所列數字為以毫米標示之建築結構尺寸。
Note: The dimensions of floor plans are all structural dimensions in millimeter.

1號屋及2號屋 - L3層平面圖
House 1 & 2 - L3 Plan



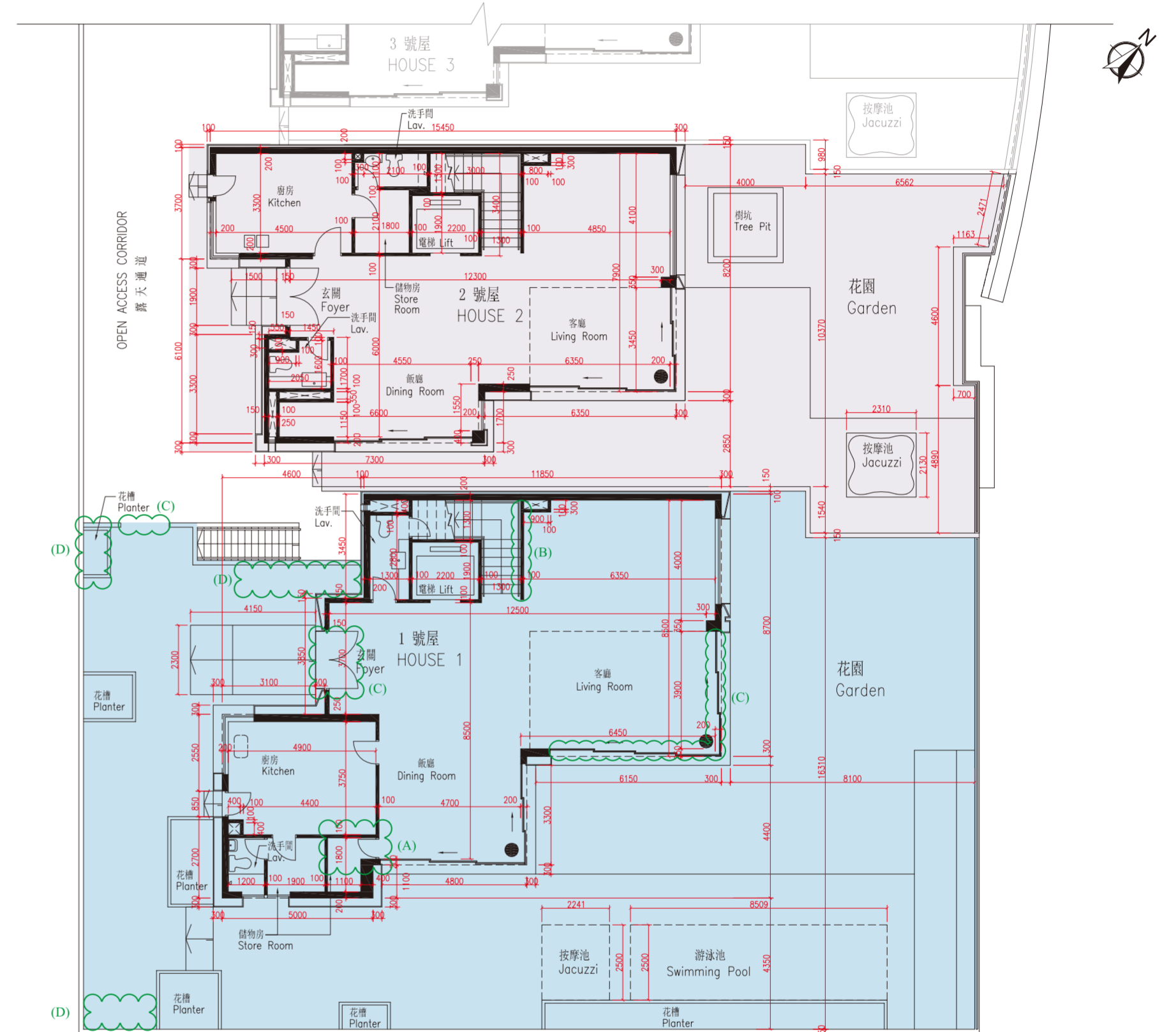
比例 SCALE : 0M(米) 5M(米)

每個住宅物業 Each Residential Property	獨立屋 House	
	1	2
樓板(不包括灰泥)的厚度(毫米) Thickness of Floor Slab (excluding plaster) (mm)	150	150
層與層之間的高度(毫米) Floor-to-Floor Height (mm)	4500	4500

因住宅物業的較高樓層的結構牆的厚度遞減，較高樓層的內部面積，一般比較低樓層的內部面積稍大。
The internal areas of the residential properties on the upper floors will generally be slightly larger than those on the lower floors because of the reducing thickness of the structural walls on the upper floors.

備註 Notes :
1. 平面圖之尺規所列數字為以毫米標示之建築結構尺寸。
2. 貼鄰住客停車位的面積(不計算入停車位面積或實用面積) : 1號屋為 29.64平方米 (319平方呎), 2號屋為 11.564平方米 (124平方呎)。
1. The dimensions of floor plans are all structural dimensions in millimeter.
2. Area adjoining residential parking space (not included in the area of parking space or saleable area) : House 1 is 29.64sq.m. (319sq.ft.), House 2 is 11.564sq.m (124sq.ft.).

1號屋及2號屋 - 地面層平面圖
House 1 & 2 - Ground Floor Plan



比例 SCALE : 0M(米) 5M(米)

每個住宅物業 Each Residential Property	獨立屋 House	
	1	2
樓板(不包括灰泥)的厚度(毫米) Thickness of Floor Slab (excluding plaster) (mm)	150, 175, 200	150, 175
層與層之間的高度(毫米) Floor-to-Floor Height (mm)	3620, 4000, 7750, 8000	3620, 4000, 7750, 8000

1號屋在發展項目落成後進行小型工程或獲《建築物條例》豁免的工程而有所改動。該等改動大概位於本樓面平面圖中標出。
House 1 has been altered by way of minor works or exempted works under the Buildings Ordinance after completion of the Development. The approximate location of the alterations is indicated in this floor plan.

地面層改動工程包括:
(A) 儲物房2門口位置改動。
(B) 原本的牆移除，並以不同尺寸的裝飾取代。
(C) 增設或改建門。
(D) 花槽移除或增建。

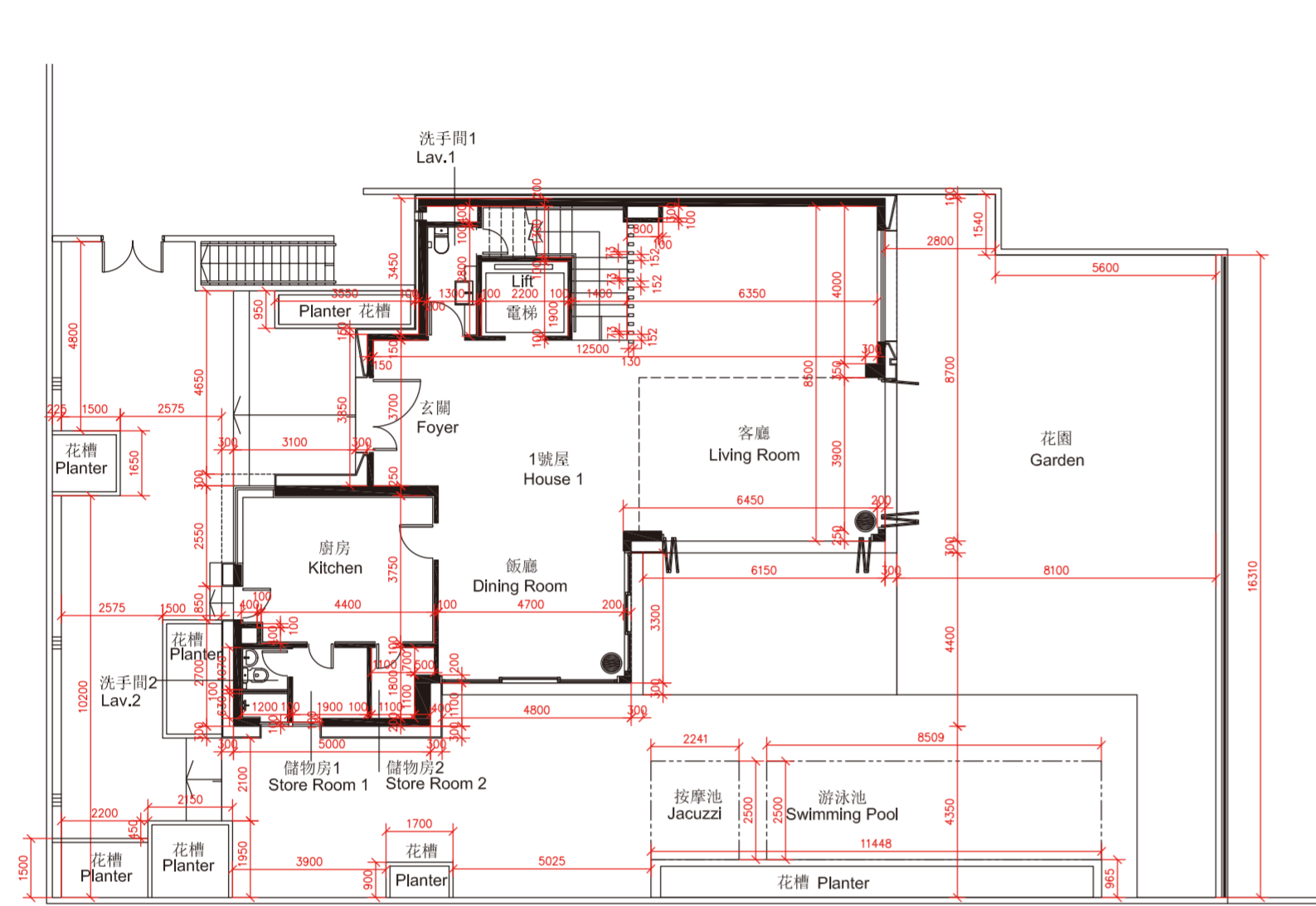
Alteration works on Ground Floor include:
(A) Location of the door in store room 2 altered.
(B) Original wall is demolished, and replaced with different fittings.
(C) Addition or alteration of doors.
(D) Planter demolished or added.

因住宅物業的較高樓層的結構牆的厚度遞減，較高樓層的內部面積，一般比較低樓層的內部面積稍大。
The internal areas of the residential properties on the upper floors will generally be slightly larger than those on the lower floors because of the reducing thickness of the structural walls on the upper floors.

備註 : 平面圖之尺規所列數字為以毫米標示之建築結構尺寸。
Note : The dimensions of floor plans are all structural dimensions in millimeter.

1號屋 - 地面層現狀間隔平面圖
House 1 - Ground Floor As-Is Plan

此版乃特意留白 This page is deliberately left in blank



比例 SCALE : 0M(米) 5M(米)

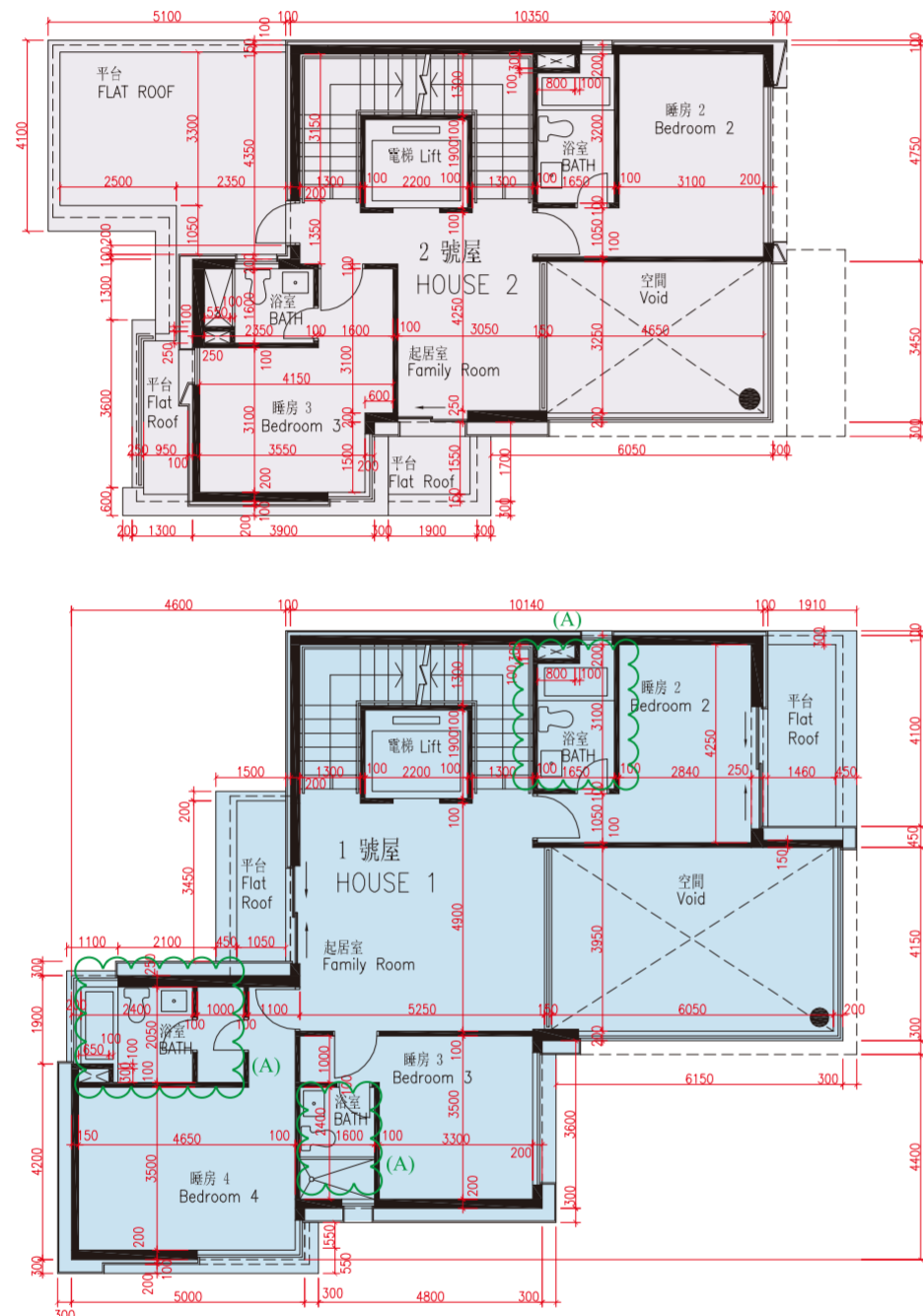
每個住宅物業 Each Residential Property	獨立屋 House	1
	樓層 Floor	
樓板(不包括灰泥)的厚度(毫米) Thickness of Floor Slab (excluding plaster) (mm)	G/F	150, 175, 200
層與層之間的高度(毫米) Floor-to-Floor Height (mm)		3620, 4000, 7750, 8000

因住宅物業的較高樓層的結構牆的厚度遞減，較高樓層的內部面積，一般比較低樓層的內部面積稍大。

The internal areas of the residential properties on the upper floors will generally be slightly larger than those on the lower floors because of the reducing thickness of the structural walls on the upper floors.

備註：平面圖之尺規所列數字為以毫米標示之建築結構尺寸。
Note: The dimensions of floor plans are all structural dimensions in millimeter.

1號屋及2號屋 - 1樓平面圖
House 1 & 2 - 1st Floor Plan



比例 SCALE : 0M(米) 5M(米)

每個住宅物業 Each Residential Property	獨立屋 House	
	1	2
樓板(不包括灰泥)的厚度(毫米) Thickness of Floor Slab (excluding plaster) (mm)	150, 175	150
層與層之間的高度(毫米) Floor-to-Floor Height (mm)	3620, 4000	3620, 4000

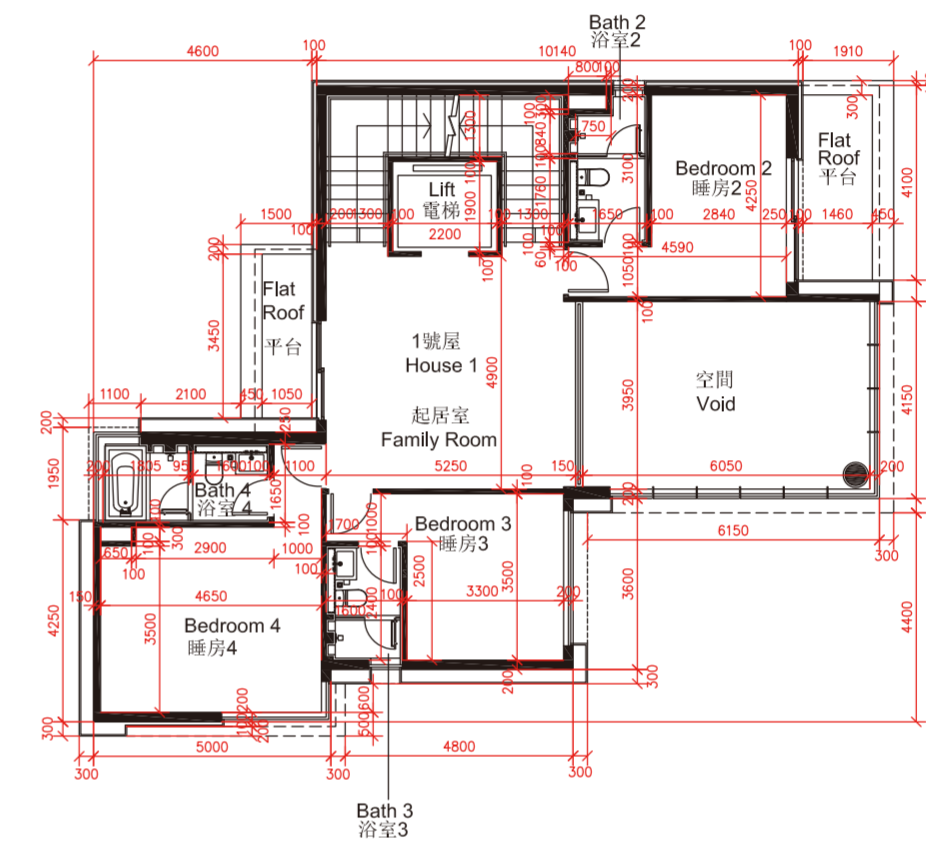
1號屋在發展項目落成後進行小型工程或獲《建築物條例》豁免的工程而有所改動。該等改動大概位於本樓面平面圖中標出。
House 1 has been altered by way of minor works or exempted works under the Buildings Ordinance after completion of the Development. The approximate location of the alterations is indicated in this floor plan.

一樓改動工程包括:
(A) 浴室原本的牆或裝置移除或移位, 並以不同尺寸的牆及裝置取代。
Alteration works on 1/F include:
(A) Original walls or fittings of bathrooms are demolished or relocated, and replaced with walls of different dimension and fitted with different fittings.

因住宅物業的較高樓層的結構牆的厚度遞減, 較高樓層的內部面積, 一般比較低樓層的內部面積稍大。
The internal areas of the residential properties on the upper floors will generally be slightly larger than those on the lower floors because of the reducing thickness of the structural walls on the upper floors.

備註: 平面圖之尺規所列數字為以毫米標示之建築結構尺寸。
Note: The dimensions of floor plans are all structural dimensions in millimeter.

1號屋 - 1樓現狀間隔平面圖
House 1 - 1st Floor As-Is Plan



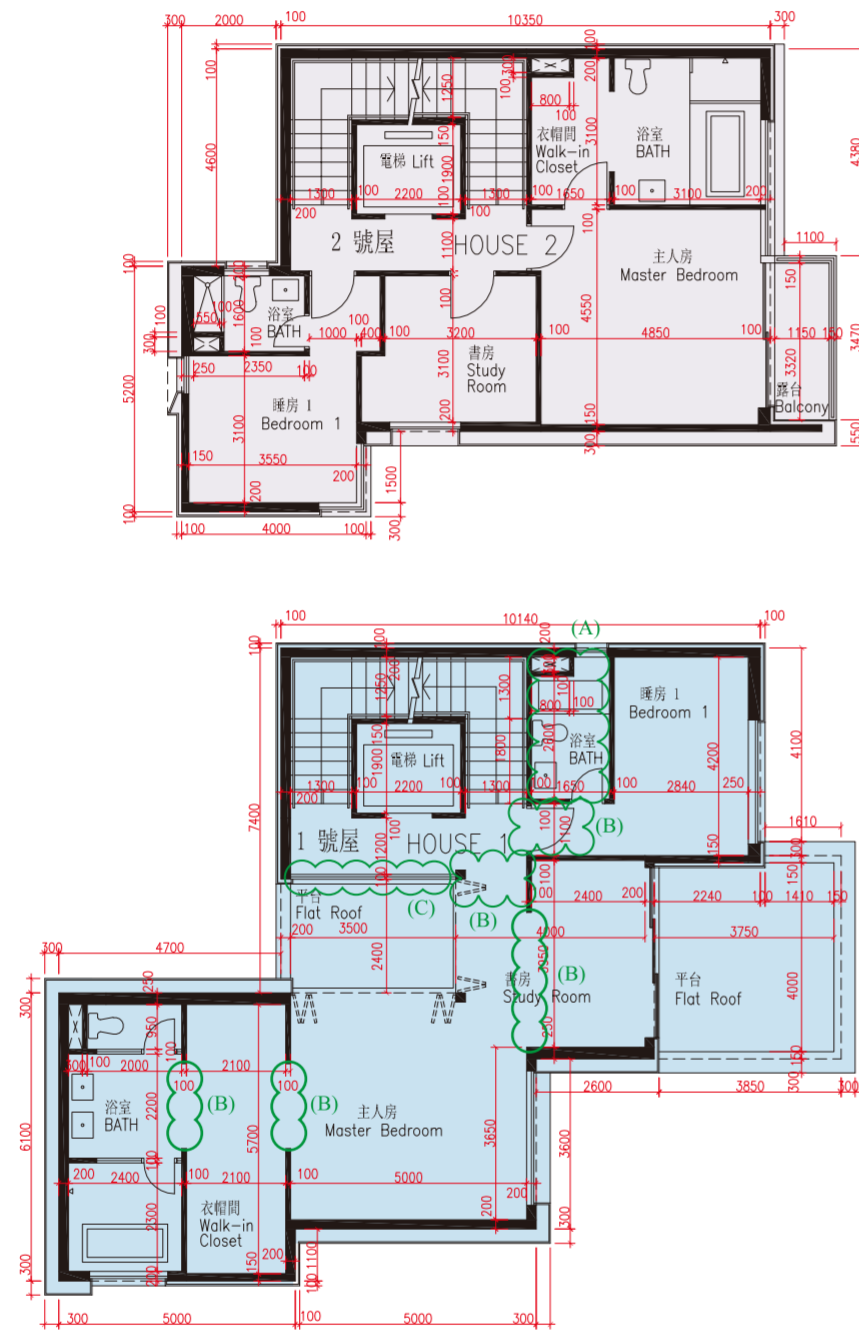
比例 SCALE : 0M(米) 5M(米)

每個住宅物業 Each Residential Property	獨立屋 House	
	1	
樓板(不包括灰泥)的厚度(毫米) Thickness of Floor Slab (excluding plaster) (mm)	150, 175	
層與層之間的高度(毫米) Floor-to-Floor Height (mm)	3620, 4000	

因住宅物業的較高樓層的結構牆的厚度遞減, 較高樓層的內部面積, 一般比較低樓層的內部面積稍大。
The internal areas of the residential properties on the upper floors will generally be slightly larger than those on the lower floors because of the reducing thickness of the structural walls on the upper floors.

備註: 平面圖之尺規所列數字為以毫米標示之建築結構尺寸。
Note: The dimensions of floor plans are all structural dimensions in millimeter.

1號屋及2號屋 - 2樓平面圖
House 1 & 2 - 2nd Floor Plan



比例 SCALE : 0M(米) 5M(米)

每個住宅物業 Each Residential Property	獨立屋 House	
	1	2
樓板(不包括灰泥)的厚度(毫米) Thickness of Floor Slab (excluding plaster) (mm)	150, 175	150, 175
層與層之間的高度(毫米) Floor-to-Floor Height (mm)	4000	4000

1號屋在發展項目落成後進行小型工程或獲《建築物條例》豁免的工程而有所改動。該等改動大概位於本樓面平面圖中標出。

House 1 has been altered by way of minor works or exempted works under the Buildings Ordinance after completion of the Development. The approximate location of the alterations is indicated in this floor plan.

二樓改動工程包括:

- (A) 浴室1原本的牆或裝置移除或移位, 並以不同尺寸的牆及裝置取代。
- (B) 增設或改建門。
- (C) 2樓走廊原本的牆移除, 並以不同物料的牆取代。

Alteration works on 2/F includes:

- (A) Original walls or fittings of bathroom 1 is demolished or relocated, and replaced with walls of different dimension and fitted with different fittings.
- (B) Addition or alteration of doors.
- (C) Original wall in corridor is demolished, and replaced with walls of different material.

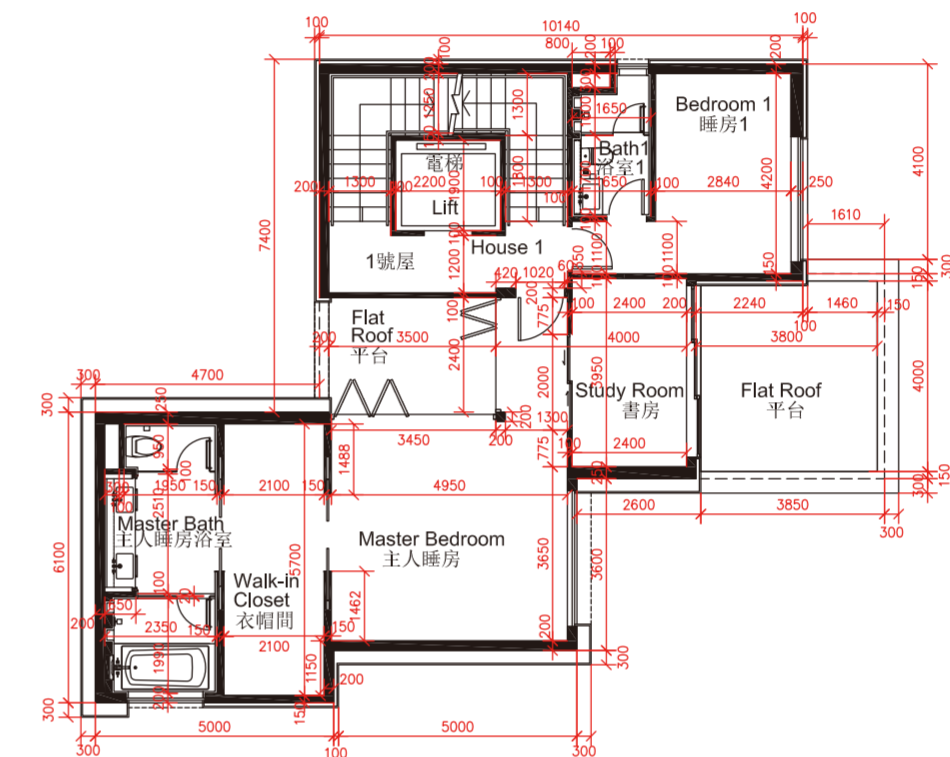
因住宅物業的較高樓層的結構牆的厚度遞減, 較高樓層的內部面積, 一般比較低樓層的內部面積稍大。

The internal areas of the residential properties on the upper floors will generally be slightly larger than those on the lower floors because of the reducing thickness of the structural walls on the upper floors.

備註: 平面圖之尺規所列數字為以毫米標示之建築結構尺寸。

Note: The dimensions of floor plans are all structural dimensions in millimeter.

1號屋 - 2樓現狀間隔平面圖
House 1 - 2nd Floor As-Is Plan



比例 SCALE : 0M(米) 5M(米)

每個住宅物業 Each Residential Property	獨立屋 House	
	1	
樓板(不包括灰泥)的厚度(毫米) Thickness of Floor Slab (excluding plaster) (mm)	150, 175	
層與層之間的高度(毫米) Floor-to-Floor Height (mm)	4000	

因住宅物業的較高樓層的結構牆的厚度遞減, 較高樓層的內部面積, 一般比較低樓層的內部面積稍大。

The internal areas of the residential properties on the upper floors will generally be slightly larger than those on the lower floors because of the reducing thickness of the structural walls on the upper floors.

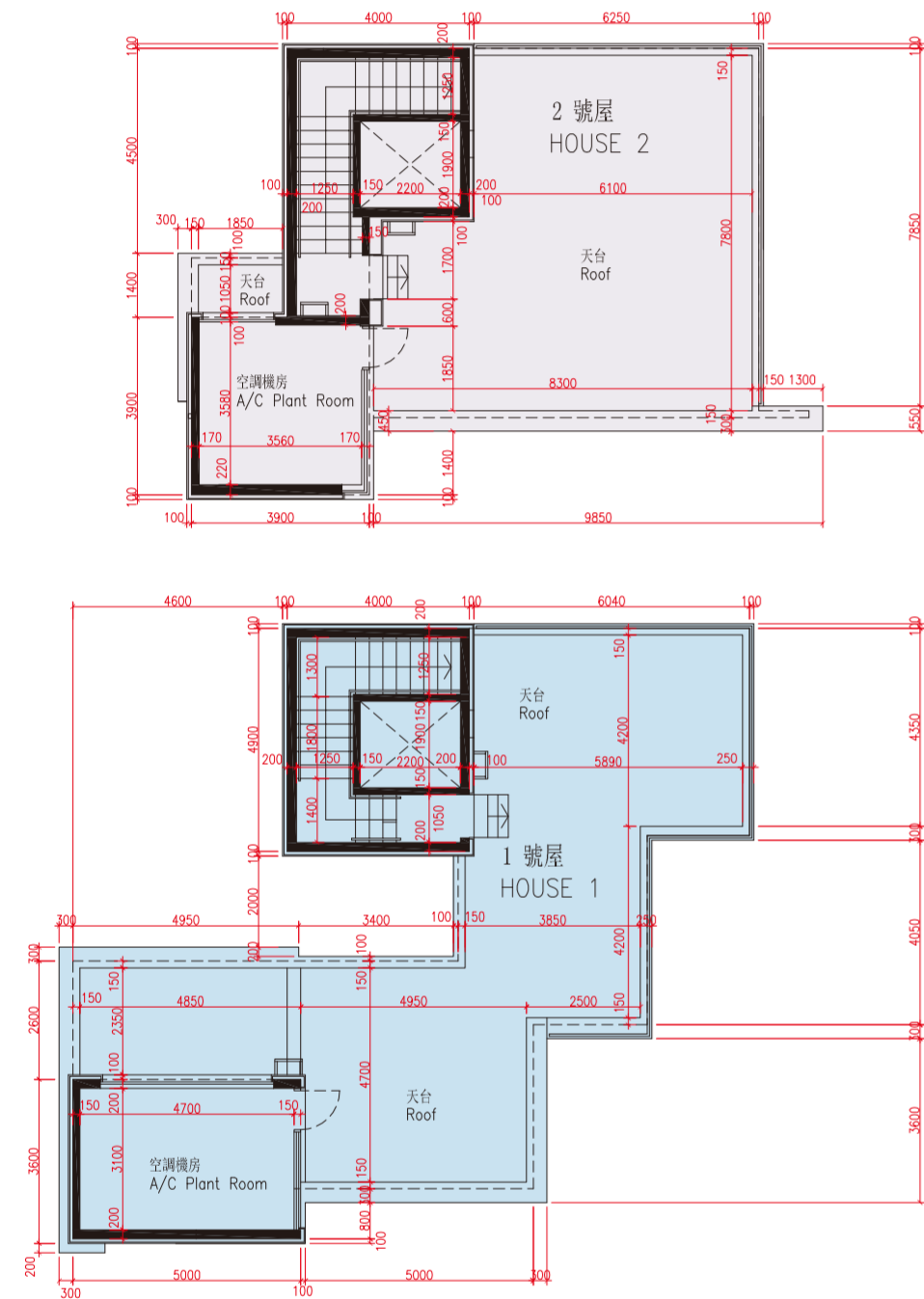
備註: 平面圖之尺規所列數字為以毫米標示之建築結構尺寸。

Note: The dimensions of floor plans are all structural dimensions in millimeter.

10 FLOOR PLANS OF RESIDENTIAL PROPERTIES IN THE DEVELOPMENT

發展項目的住宅物業的樓面平面圖

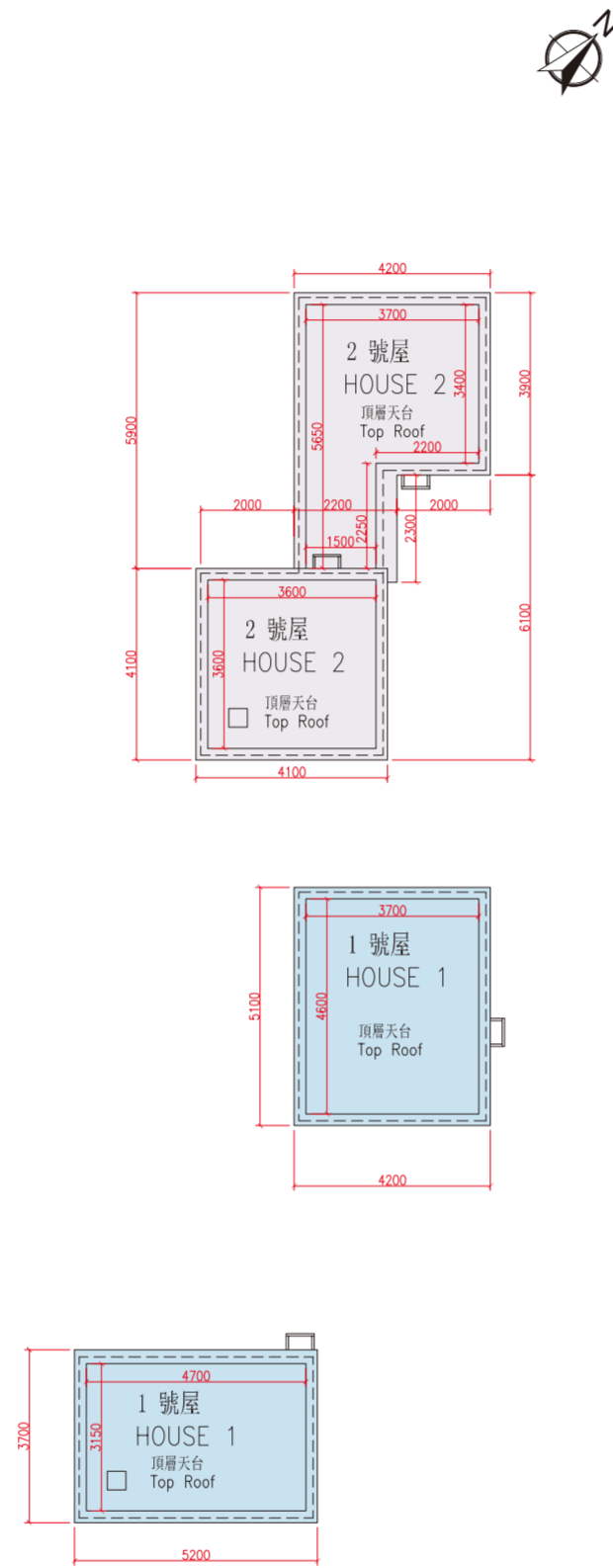
1號屋及2號屋 - 天台平面圖
House 1 & 2 - Roof Floor Plan



比例 SCALE : 0M(米) 5M(米)

每個住宅物業 Each Residential Property	獨立屋 House	
	1	2
樓層 Floor		
樓板(不包括灰泥)的厚度(毫米) Thickness of Floor Slab (excluding plaster) (mm)	不適用 Not Applicable	
層與層之間的高度(毫米) Floor-to-Floor Height (mm)	不適用 Not Applicable	

1號屋及2號屋 - 頂層天台平面圖
House 1 & 2 - Top Roof Floor Plan



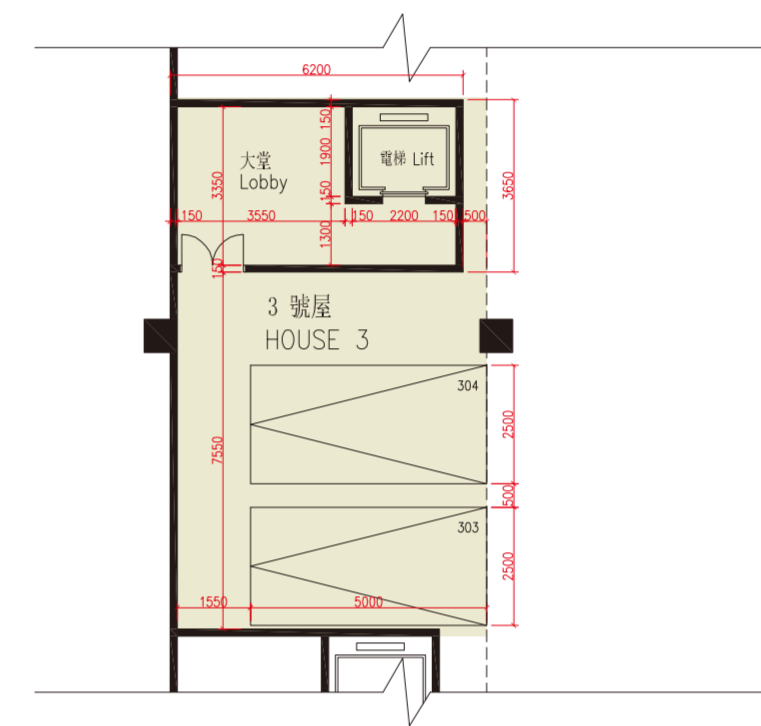
比例 SCALE : 0M(米) 5M(米)

每個住宅物業 Each Residential Property	獨立屋 House	
	3	
樓層 Floor		
樓板(不包括灰泥)的厚度(毫米) Thickness of Floor Slab (excluding plaster) (mm)	L3層 L3	150
層與層之間的高度(毫米) Floor-to-Floor Height (mm)		4500

因住宅物業的較高樓層的結構牆的厚度遞減，較高樓層的內部面積，一般比較低樓層的內部面積稍大。
The internal areas of the residential properties on the upper floors will generally be slightly larger than those on the lower floors because of the reducing thickness of the structural walls on the upper floors.

備註： 1. 平面圖之尺規所列數字為以毫米標示之建築結構尺寸。
2. 頂層天台之面積不包括於天台面積之內。
Notes : 1. The dimensions of floor plans are all structural dimensions in millimeter.
2. The area of top roof is not included in the area of roof.

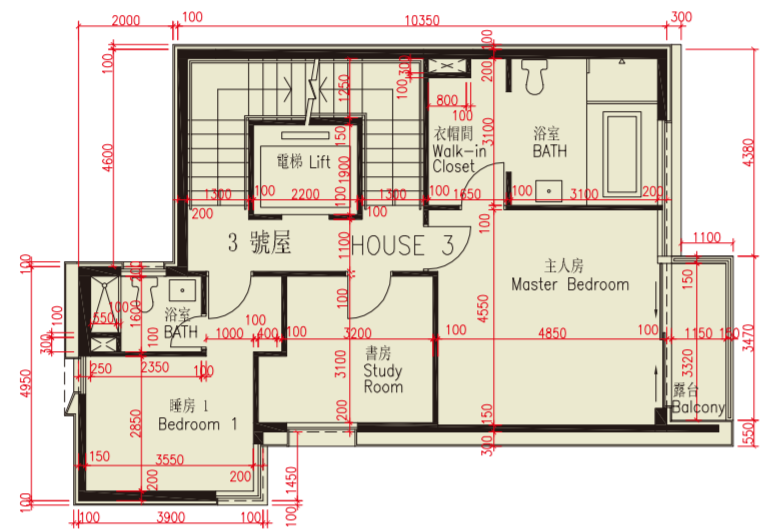
3號屋 - L3層平面圖
House 3 - L3 Plan



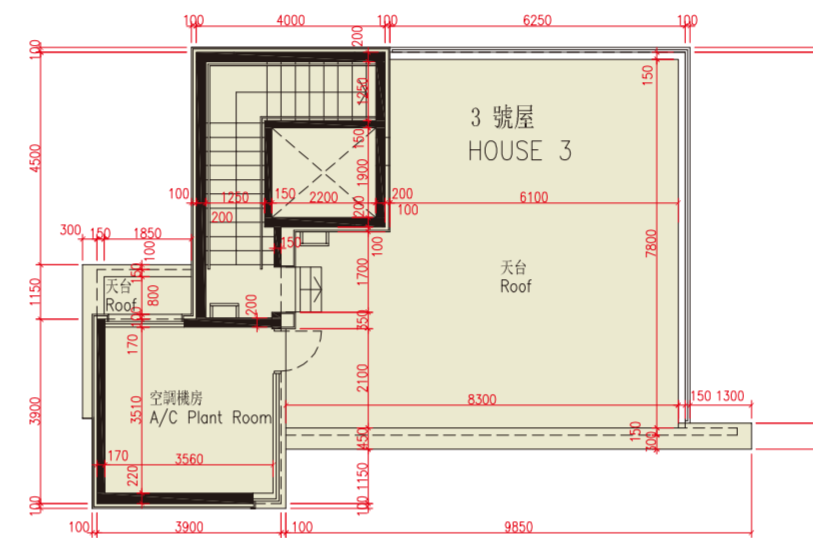
因住宅物業的較高樓層的結構牆的厚度遞減，較高樓層的內部面積，一般比較低樓層的內部面積稍大。
The internal areas of the residential properties on the upper floors will generally be slightly larger than those on the lower floors because of the reducing thickness of the structural walls on the upper floors.

備註 Notes :
1. 平面圖之尺規所列數字為以毫米標示之建築結構尺寸。
2. 貼鄰住客停車位的面積(不計算入停車位面積或實用面積) : 3號屋為 26.277平方米 (283平方呎)。
1. The dimensions of floor plans are all structural dimensions in millimeter.
2. Area adjoining residential parking space (not included in the area of parking space or saleable area) : House 3 is 26.277sq.m. (283sq.ft.).

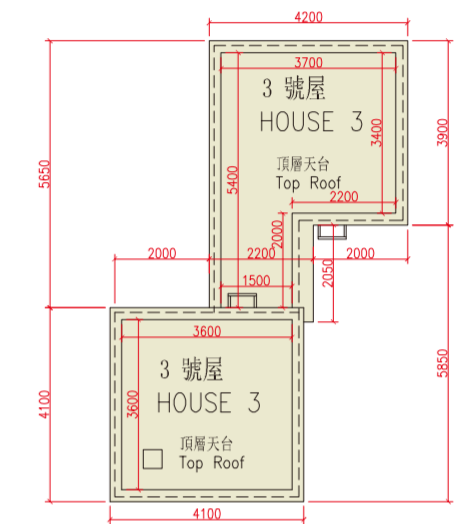
3號屋 - 2樓平面圖
House 3 - 2nd Floor Plan



3號屋 - 天台平面圖
House 3 - Roof Floor Plan



3號屋 - 頂層天台平面圖
House 3 - Top Roof Floor Plan



比例 SCALE : 0M(米) 5M(米)

每個住宅物業 Each Residential Property	獨立屋 House	3
樓板(不包括灰泥)的厚度(毫米) Thickness of Floor Slab (excluding plaster) (mm)	樓層 Floor	150, 175
層與層之間的高度(毫米) Floor-to-Floor Height (mm)	2/F	4000

因住宅物業的較高樓層的結構牆的厚度遞減，較高樓層的內部面積，一般比較低樓層的內部面積稍大。
The internal areas of the residential properties on the upper floors will generally be slightly larger than those on the lower floors because of the reducing thickness of the structural walls on the upper floors.

備註：平面圖之尺規所列數字為以毫米標示之建築結構尺寸。
Note: The dimensions of floor plans are all structural dimensions in millimeter.

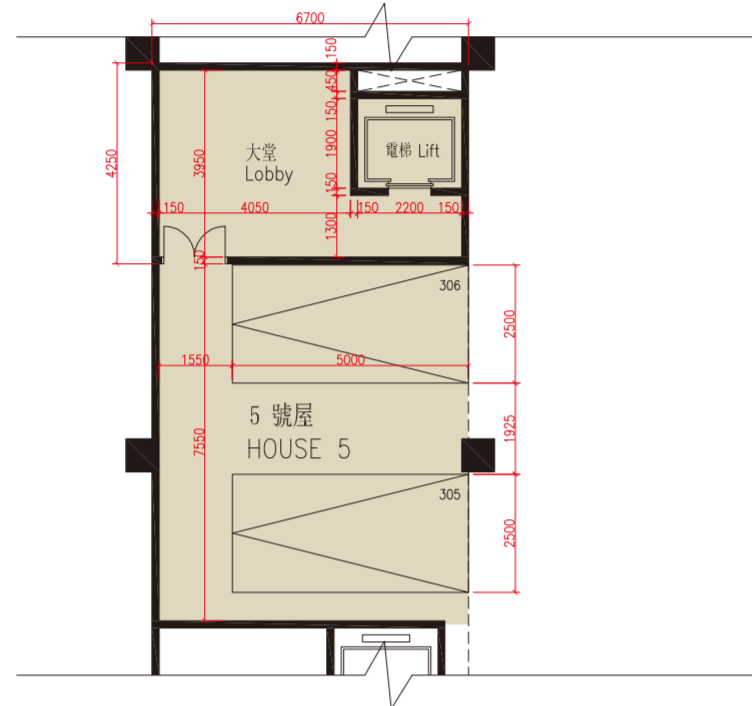
比例 SCALE : 0M(米) 5M(米)

每個住宅物業 Each Residential Property	獨立屋 House	3
樓板(不包括灰泥)的厚度(毫米) Thickness of Floor Slab (excluding plaster) (mm)	樓層 Floor	不適用 Not Applicable
層與層之間的高度(毫米) Floor-to-Floor Height (mm)	天台/頂層天台 Roof / Top Roof	不適用 Not Applicable

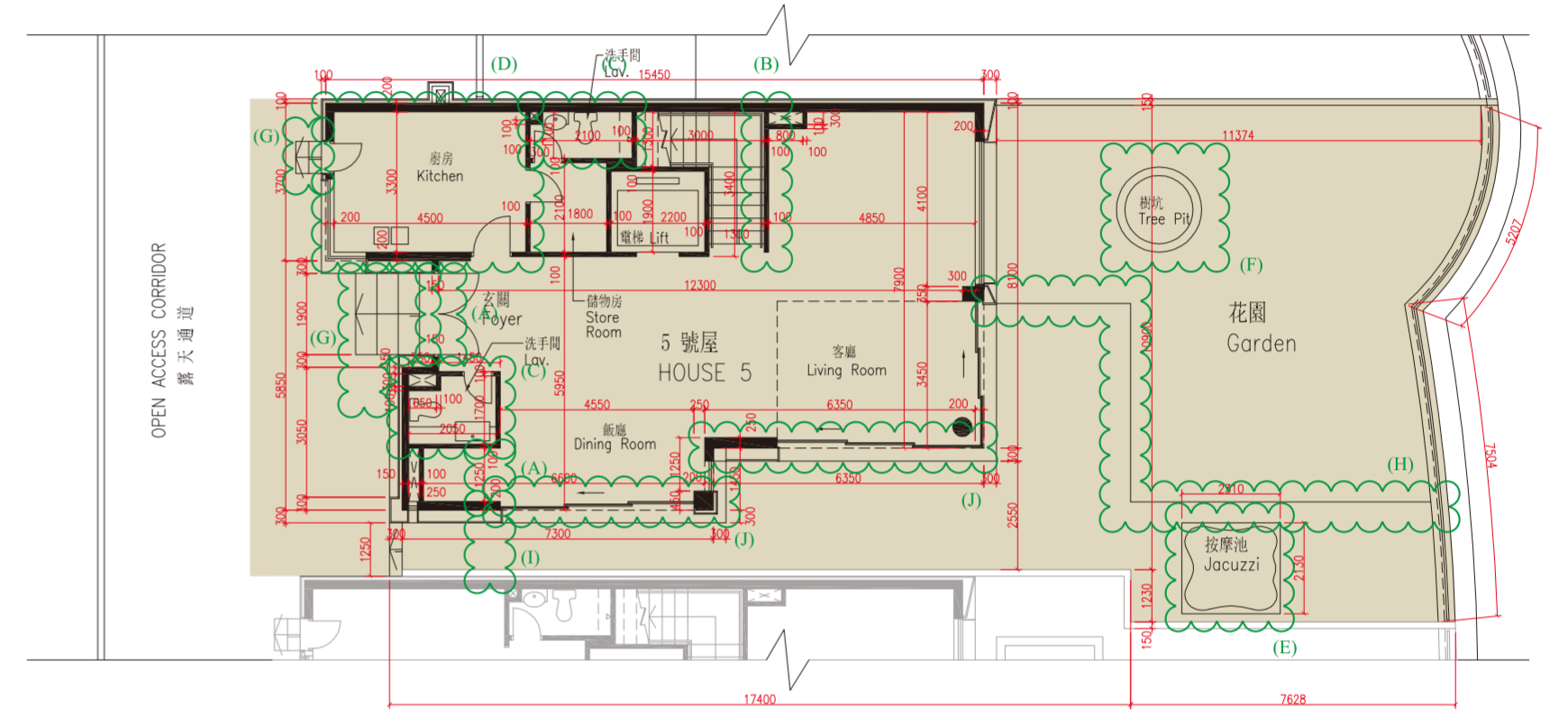
因住宅物業的較高樓層的結構牆的厚度遞減，較高樓層的內部面積，一般比較低樓層的內部面積稍大。
The internal areas of the residential properties on the upper floors will generally be slightly larger than those on the lower floors because of the reducing thickness of the structural walls on the upper floors.

備註：1. 平面圖之尺規所列數字為以毫米標示之建築結構尺寸。
2. 頂層天台之面積不包括於天台面積之內。
Notes: 1. The dimensions of floor plans are all structural dimensions in millimeter.
2. The area of top roof is not included in the area of roof.

5號屋 - L3層平面圖
House 5 - L3 Plan



5號屋 - 地面平面圖
House 5 - Ground Floor Plan



比例 SCALE : 0M(米) 5M(米)

每個住宅物業 Each Residential Property	獨立屋 House	5
樓板(不包括灰泥)的厚度(毫米) Thickness of Floor Slab (excluding plaster) (mm)	樓層 Floor	150
層與層之間的高度(毫米) Floor-to-Floor Height (mm)	L3層 L3	4500

因住宅物業的較高樓層的結構牆的厚度遞減，較高樓層的內部面積，一般比較低樓層的內部面積稍大。
The internal areas of the residential properties on the upper floors will generally be slightly larger than those on the lower floors because of the reducing thickness of the structural walls on the upper floors.

備註 Notes :
1. 平面圖之尺規所列數字為以毫米標示之建築結構尺寸。
2. 貼鄰住客停車位的面積(不計算入停車位面積或實用面積) : 5號屋為 24.453平方米 (263平方呎)。
1. The dimensions of floor plans are all structural dimensions in millimeter.
2. Area adjoining residential parking space (not included in the area of parking space or saleable area) : House 5 is 24.453sq.m. (263sq.ft.).

比例 SCALE : 0M(米) 5M(米)

每個住宅物業 Each Residential Property	獨立屋 House	5
樓板(不包括灰泥)的厚度(毫米) Thickness of Floor Slab (excluding plaster) (mm)	G/F	150, 175
層與層之間的高度(毫米) Floor-to-Floor Height (mm)		3620, 4000, 8000

- (A) 門移位或拆除，並以不同位置或不同設計之門取代。
Door relocated or removed and replaced by a door at a different location or different design.
- (B) 內牆拆除，並以不同尺寸的牆及不同的裝置取代。
Original walls removed, replaced with walls of different dimensions and fitted with different fittings.
- (C) 浴室原本的牆及裝置移除或移位，並以不同尺寸的牆及不同的裝置取代。
Original walls and fittings of bathroom were demolished or relocated, replaced with walls of different dimension and fitted with different fittings.
- (D) 廚房原本的牆及裝置移除或移位，並以不同尺寸的牆及不同的裝置取代。
Original walls and fittings of kitchen were demolished or relocated, replaced with walls of different dimensions and fitted with different fittings.

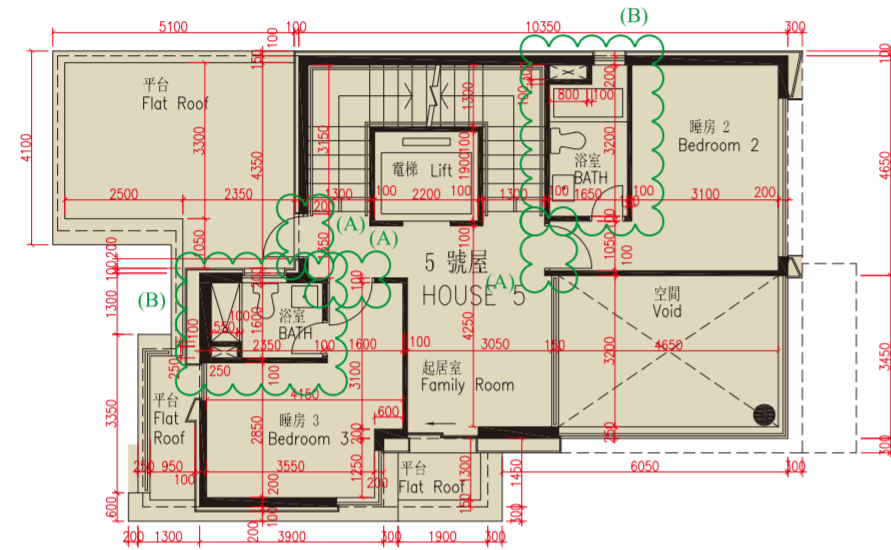
因住宅物業的較高樓層的結構牆的厚度遞減，較高樓層的內部面積，一般比較低樓層的內部面積稍大。
The internal areas of the residential properties on the upper floors will generally be slightly larger than those on the lower floors because of the reducing thickness of the structural walls on the upper floors.

備註 : 平面圖之尺規所列數字為以毫米標示之建築結構尺寸。
Note : The dimensions of floor plans are all structural dimensions in millimeter.

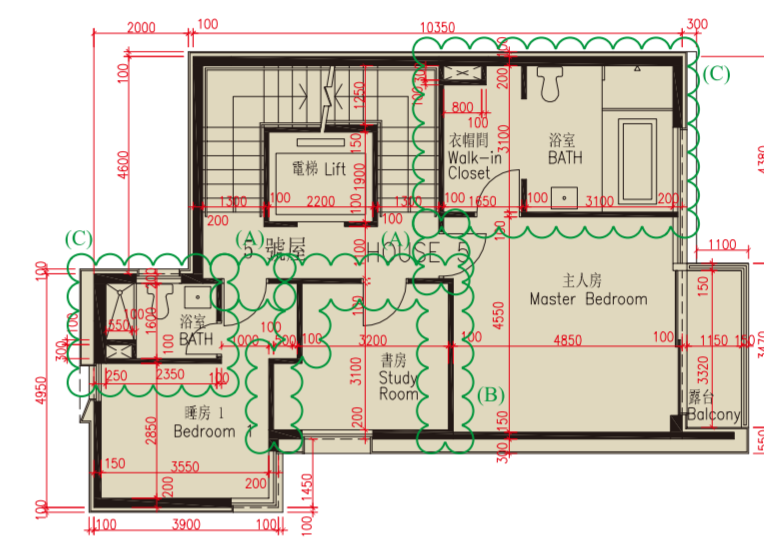
5號屋在發展項目落成後因進行小型工程或獲《建築物條例》豁免的工程而有所改動。該等改動大概位於本樓面平面圖中標出。
House 5 has been altered by way of minor works or exempted works under the Buildings Ordinance after completion of the Development. The approximate location of the alterations are indicated in this floor plan.

- (E) 按摩池裝置移位。
Fittings of jacuzzi relocated.
- (F) 綠化裝置改動。
Eco-friendly device adjusted.
- (G) 梯級改動。
Staircase adjusted.
- (H) 地台飾面移位或移除，或有飾面更改。
Floor finish relocated or removed, or change of finish material.
- (I) 增設閘門。
Gate added.
- (J) 玻璃趟門改動。
Glass sliding door altered.

5號屋 - 1樓平面圖
House 5 - 1st Floor Plan



5號屋 - 2樓平面圖
House 5 - 2nd Floor Plan



因住宅物業的較高樓層的結構牆的厚度遞減，較高樓層的內部面積，一般比較低樓層的內部面積稍大。
The internal areas of the residential properties on the upper floors will generally be slightly larger than those on the lower floors because of the reducing thickness of the structural walls on the upper floors.

備註：平面圖之尺規所列數字為以毫米標示之建築結構尺寸。
Note: The dimensions of floor plans are all structural dimensions in millimeter.

5號屋在發展項目落成後進行小型工程或獲《建築物條例》豁免的工程而有所改動。該等改動大概位置於本樓面平面圖中標出。
House 5 has been altered by way of minor works or exempted works under the Buildings Ordinance after completion of the Development. The approximate location of the alterations are indicated in this floor plan.

- (A) 門移位或拆除，並以不同位置或不同設計之門取代。
Door relocated or removed and replaced by a door at a different location or different design.
- (B) 浴室原本的牆及裝置移除或移位，並以不同尺寸的牆及不同的裝置取代。
Original walls and fittings of bathroom were demolished or relocated, replaced with walls of different dimensions and fitted with different fittings.

比例 SCALE : 0M(米) 5M(米)

每個住宅物業 Each Residential Property	獨立屋 House	5
樓板(不包括灰泥)的厚度(毫米) Thickness of Floor Slab (excluding plaster) (mm)	樓層 Floor	150
層與層之間的高度(毫米) Floor-to-Floor Height (mm)	1/F	3620, 4000

比例 SCALE : 0M(米) 5M(米)

每個住宅物業 Each Residential Property	獨立屋 House	5
樓板(不包括灰泥)的厚度(毫米) Thickness of Floor Slab (excluding plaster) (mm)	樓層 Floor	150, 175
層與層之間的高度(毫米) Floor-to-Floor Height (mm)	2/F	4000

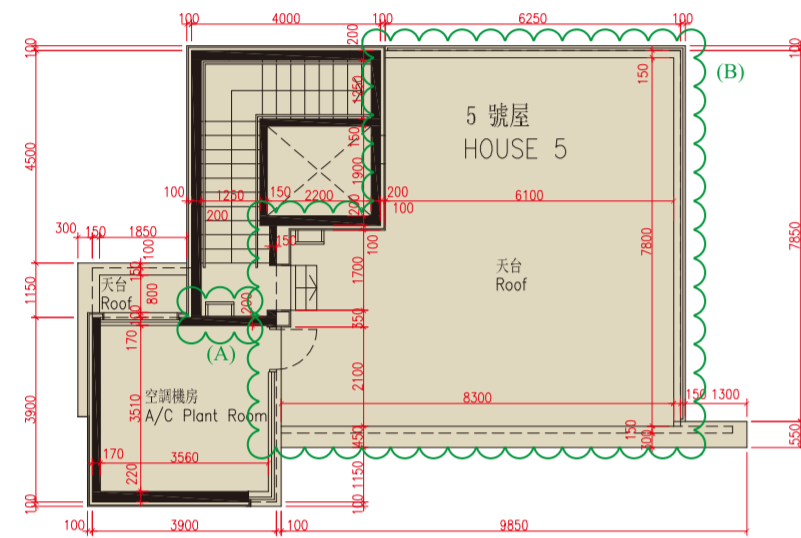
因住宅物業的較高樓層的結構牆的厚度遞減，較高樓層的內部面積，一般比較低樓層的內部面積稍大。
The internal areas of the residential properties on the upper floors will generally be slightly larger than those on the lower floors because of the reducing thickness of the structural walls on the upper floors.

備註：平面圖之尺規所列數字為以毫米標示之建築結構尺寸。
Note: The dimensions of floor plans are all structural dimensions in millimeter.

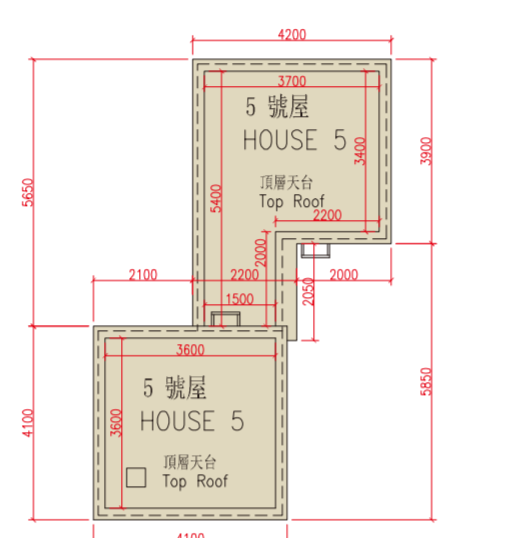
5號屋在發展項目落成後進行小型工程或獲《建築物條例》豁免的工程而有所改動。該等改動大概位置於本樓面平面圖中標出。
House 5 has been altered by way of minor works or exempted works under the Buildings Ordinance after completion of the Development. The approximate location of the alterations are indicated in this floor plan.

- (A) 門移位或拆除，並以不同位置或不同設計之門取代。
Door relocated or removed and replaced by a door at a different location or different design.
- (B) 內牆拆除，並以不同尺寸的牆及不同的裝置取代。
Original walls removed, replaced with walls of different dimensions and fitted with different fittings.
- (C) 浴室原本的牆及裝置移除或移位，並以不同尺寸的牆及不同的裝置取代。
Original walls and fittings of bathroom were demolished or relocated, replaced with walls of different dimensions and fitted with different fittings.

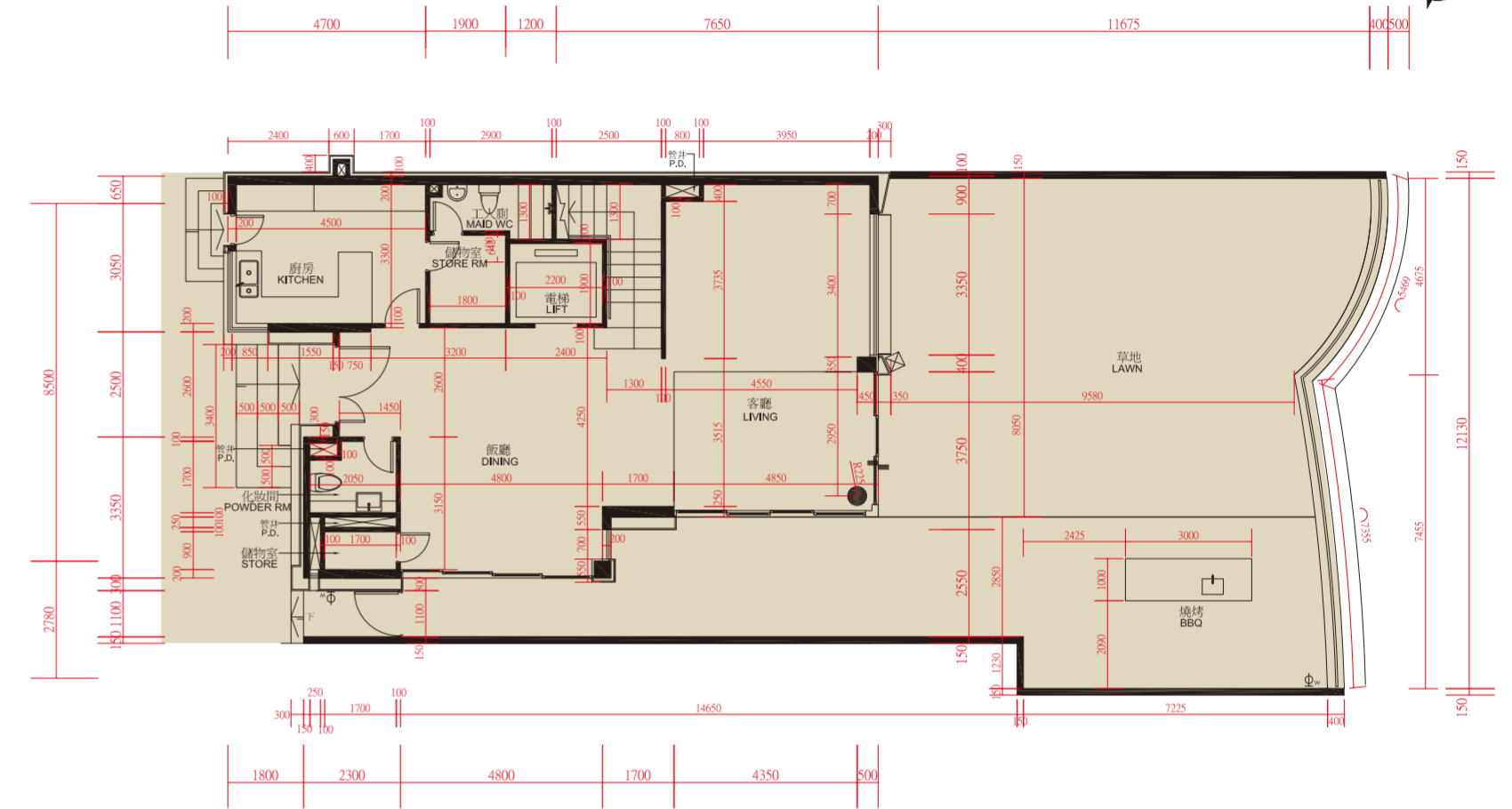
5號屋 - 天台平面圖
House 5 - Roof Floor Plan



5號屋 - 頂層天台平面圖
House 5 - Top Roof Floor Plan



5號屋 - 現狀平面圖
House 5 - As-is Floor Plan
地面層 Ground Floor



因住宅物業的較高樓層的結構牆的厚度遞減，較高樓層的內部面積，一般比較低樓層的內部面積稍大。
The internal areas of the residential properties on the upper floors will generally be slightly larger than those on the lower floors because of the reducing thickness of the structural walls on the upper floors.

備註：1. 平面圖之尺規所列數字為以毫米標示之建築結構尺寸。
2. 頂層天台之面積不包括於天台面積之內。
Notes : 1. The dimensions of floor plans are all structural dimensions in millimeter.
2. The area of top roof is not included in the area of roof.

5號屋在發展項目落成後因進行小型工程或獲《建築物條例》豁免的工程而有所改動。該等改動大概位置於本樓面平面圖中標出。
House 5 has been altered by way of minor works or exempted works under the Buildings Ordinance after completion of the Development. The approximate location of the alterations are indicated in this floor plan.

- (A) 維修梯裝置移位或拆除。
Maintenance stair relocated or removed.
- (B) 天台地台飾面更改，及加設平台，梯級與其裝置。
Roof floor finish changed and flat roof, staircase and its devices added.

比例 SCALE : 0M(米) 5M(米)

每個住宅物業 Each Residential Property	獨立屋 House	5
樓板(不包括灰泥)的厚度(毫米) Thickness of Floor Slab (excluding plaster) (mm)	樓層 Floor	不適用 Not Applicable
層與層之間的高度(毫米) Floor-to-Floor Height (mm)	天台/頂層天台 Roof / Top Roof	不適用 Not Applicable

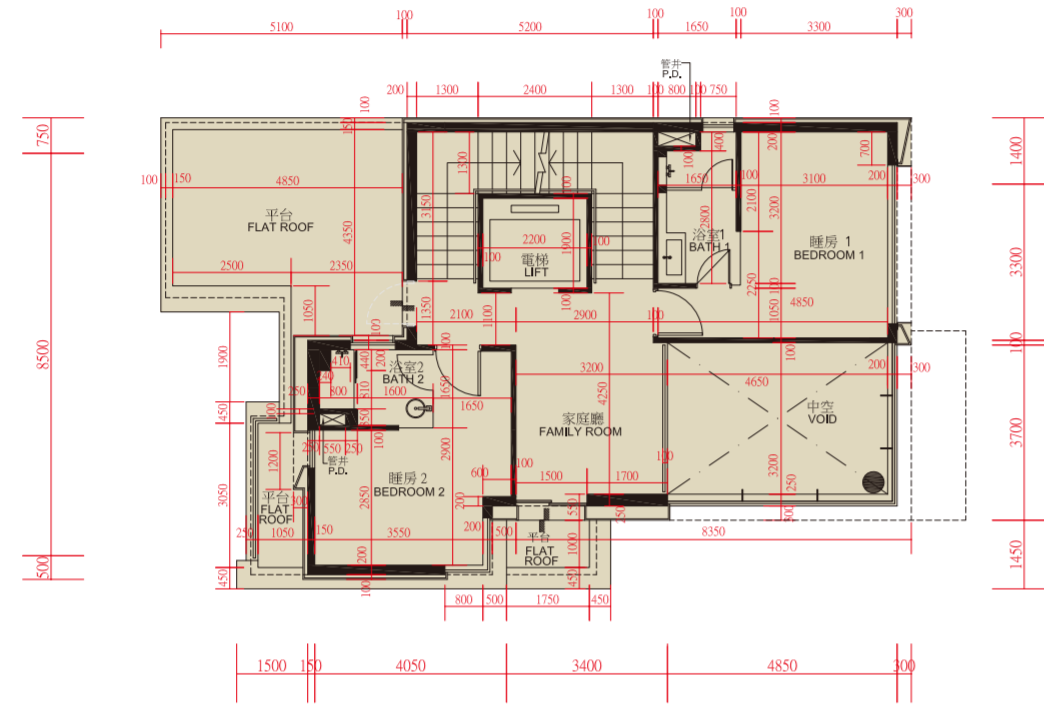
比例 SCALE : 0M(米) 5M(米)

每個住宅物業 Each Residential Property	獨立屋 House	5
樓板(不包括灰泥)的厚度(毫米) Thickness of Floor Slab (excluding plaster) (mm)	樓層 Floor	150, 175
層與層之間的高度(毫米) Floor-to-Floor Height (mm)	G/F	3620, 4000, 8000

因住宅物業的較高樓層的結構牆的厚度遞減，較高樓層的內部面積，一般比較低樓層的內部面積稍大。
The internal areas of the residential properties on the upper floors will generally be slightly larger than those on the lower floors because of the reducing thickness of the structural walls on the upper floors.

備註：平面圖之尺規所列數字為以毫米標示之建築結構尺寸。
Note : The dimensions of floor plans are all structural dimensions in millimeter.

5號屋 - 現狀平面圖
House 5 - As-is Floor Plan
1樓 1st Floor



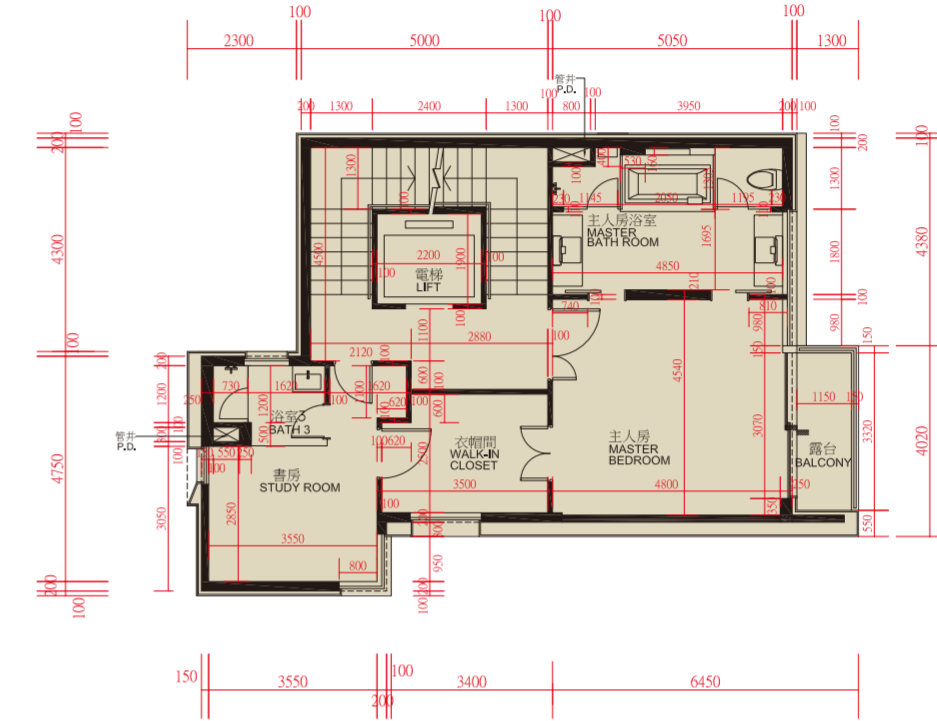
比例 SCALE : 0M(米) 5M(米)

每個住宅物業 Each Residential Property	獨立屋 House	5
	樓層 Floor	
樓板(不包括灰泥)的厚度(毫米) Thickness of Floor Slab (excluding plaster) (mm)	1/F	150
層與層之間的高度(毫米) Floor-to-Floor Height (mm)		3620, 4000

因住宅物業的較高樓層的結構牆的厚度遞減，較高樓層的內部面積，一般比較低樓層的內部面積稍大。
The internal areas of the residential properties on the upper floors will generally be slightly larger than those on the lower floors because of the reducing thickness of the structural walls on the upper floors.

備註：平面圖之尺規所列數字為以毫米標示之建築結構尺寸。
Note : The dimensions of floor plans are all structural dimensions in millimeter.

5號屋 - 現狀平面圖
House 5 - As-is Floor Plan
2樓 2nd Floor



比例 SCALE : 0M(米) 5M(米)

每個住宅物業 Each Residential Property	獨立屋 House	5
	樓層 Floor	
樓板(不包括灰泥)的厚度(毫米) Thickness of Floor Slab (excluding plaster) (mm)	2/F	150, 175
層與層之間的高度(毫米) Floor-to-Floor Height (mm)		4000

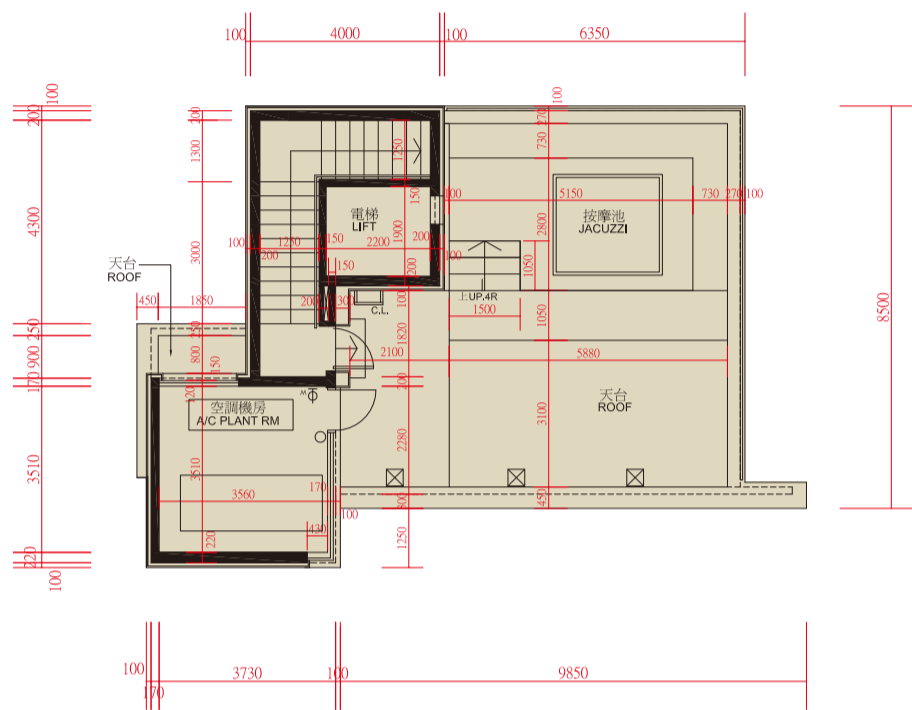
因住宅物業的較高樓層的結構牆的厚度遞減，較高樓層的內部面積，一般比較低樓層的內部面積稍大。
The internal areas of the residential properties on the upper floors will generally be slightly larger than those on the lower floors because of the reducing thickness of the structural walls on the upper floors.

備註：平面圖之尺規所列數字為以毫米標示之建築結構尺寸。
Note : The dimensions of floor plans are all structural dimensions in millimeter.

10 FLOOR PLANS OF RESIDENTIAL PROPERTIES IN THE DEVELOPMENT

發展項目的住宅物業的樓面平面圖

5號屋 - 現狀平面圖
House 5 - As-is Floor Plan
天台 Roof



比例 SCALE : 0M(米) 5M(米)

每個住宅物業 Each Residential Property	獨立屋 House	5
樓板(不包括灰泥)的 厚度(毫米) Thickness of Floor Slab (excluding plaster) (mm)	天台 Roof	不適用 Not Applicable
層與層之間的高度(毫米) Floor-to-Floor Height (mm)		

因住宅物業的較高樓層的結構牆的厚度遞減，較高樓層的內部面積，一般比較低樓層的內部面積稍大。
The internal areas of the residential properties on the upper floors will generally be slightly larger than those on the lower floors because of the reducing thickness of the structural walls on the upper floors.

備註：平面圖之尺規所列數字為以毫米標示之建築結構尺寸。
Note : The dimensions of floor plans are all structural dimensions in millimeter.