

# Floor Plans of Residential Properties in the Development

## 發展項目的住宅物業的樓面平面圖

### Legend of Terms and Abbreviations used on floor plans: 平面圖中所使用名詞及簡稱之圖例：

BATH = BATHROOM = 浴室

BALCONY = 露台

BEDROOM = 睡房

CLOAK ROOM = 衣帽室

C.L. = CAT LADDER = 爬梯

DINING AREA = 飯廳

DN = DOWN = 落

E/M AREA = ELECTRICAL & MECHANICAL AREA = 機電空間

FILTRATION PLANT WITH GRILLE ON TOP = 濾水系統空間配格柵頂蓋

FLAT ROOF = 平台

FOYER = 休息廳

GAME ROOM = 娛樂室

GARDEN = 花園

GENUINE STORE = GENUINE STORE ROOM = 儲物室

H.R. = HOSE REEL = 消防喉轆

KITCHEN = 廚房

LAV. = LAVATORY = 洗手間

LIFT = 升降機

LIFT LOBBY = 升降機大堂

LIVING AREA = 客廳

LOUNGE ROOM = 雅座

MAID ROOM = 工人房

MASTER BEDROOM = 主人睡房

MASTER BATHROOM = 主人浴室

PANTRY = 茶水間

P & F WATER PUMP ROOM = POTABLE AND FLUSH WATER PUMP ROOM = 食水及沖廁水泵房

P.D. = PIPE DUCT = 管槽

POWDER = POWDER ROOM = 化粧間

P. = PLANTER = 花槽

ROOF = 天台

STORE = GENUINE STORE ROOM = 儲物室

SUITE = 套房

SWIMMING POOL = 游泳池

TOP ROOF = 頂層天台

UP = 上

UTILITY = UTILITY ROOM = 多用途房

WALK-IN CLOSET = 衣帽間

#### Remarks:

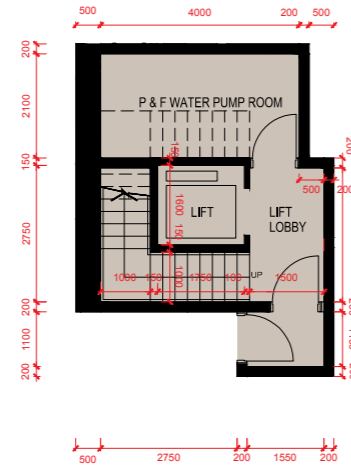
1. There may be architectural features e.g. stone claddings and metal claddings on external walls of some of the houses.
2. There are sunken slabs and/ or ceiling bulkheads at living areas, dining areas, master bedrooms, suites, bedrooms, foyers, bathrooms, kitchen, genuine store rooms, lifts, game rooms, lounge rooms, maid rooms, utility rooms, cloak rooms, pantry, powder rooms, walk-in closets and lavatories of some houses for the air-conditioning system and/ or M&E services. There are exposed pipes/ ductings for air-conditioning system and/ or M&E services within some genuine store rooms, maid rooms and utility rooms.
3. Balconies are non-enclosed areas.

#### 附註:

1. 部份洋房外牆範圍設有建築裝飾，如石材外層裝飾及金屬外層裝飾。
2. 部份洋房單位客廳、飯廳、主人睡房、套房、睡房、休息廳、浴室、廚房、儲物室、升降機、娛樂室、雅座、工人房、多用途房、衣帽室、茶水間、化粧間、衣帽間及洗手間天花有跌級樓板及/或假天花用以裝置冷氣系統及/或其他機電設備。部份儲物室、工人房及多用途房內設有冷氣及/或機電設備之外露喉管/管道。
3. 露台為不可封閉的地方。

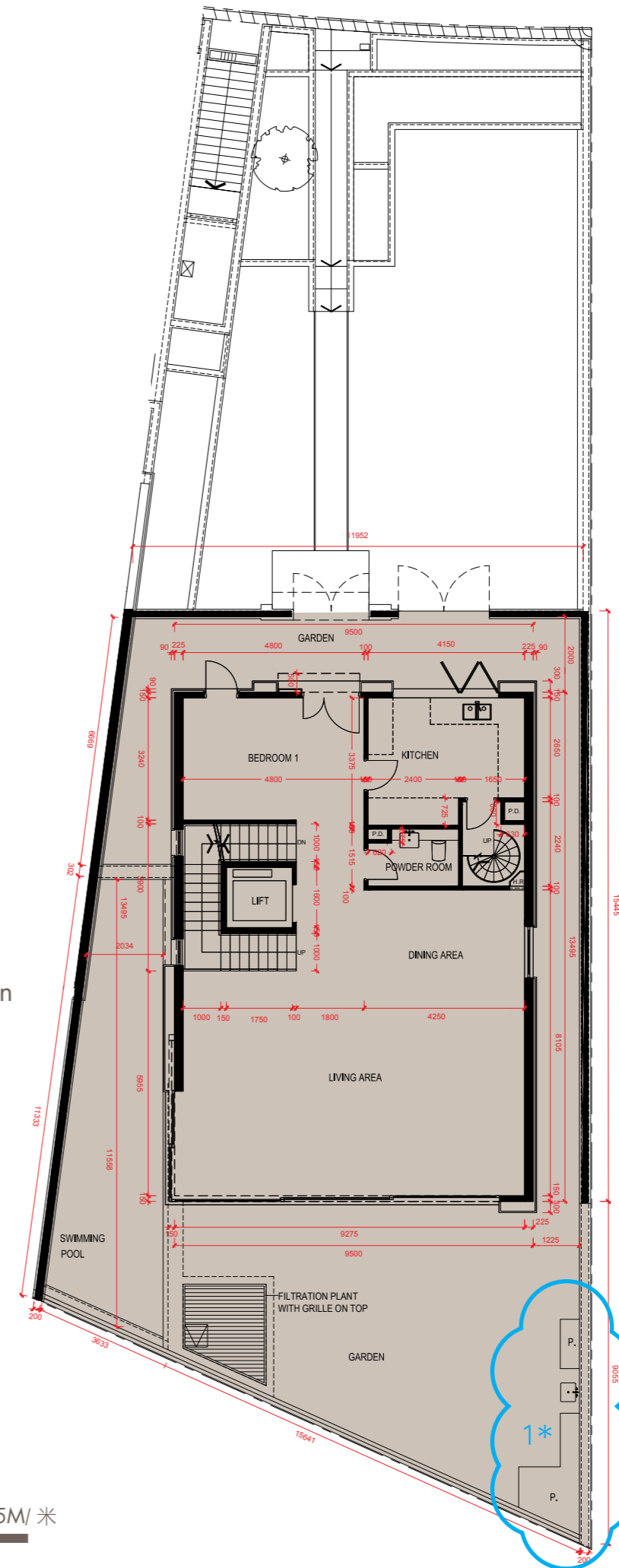
# Floor Plans of Residential Properties in the Development 發展項目的住宅物業的樓面平面圖

**39 Lai Ping Road**  
麗坪路39號



Carpark Floor Plan  
停車場平面圖

Ground Floor Plan  
地下平面圖



1. The floor-to-floor height of 39 Lai Ping Road: 4250mm for Carpark Floor, 4250mm for G/F, 3500mm for 1/F and 3500mm for 2/F.
2. The thickness of the floor slabs (excluding plaster) of 39 Lai Ping Road: 150mm, 175mm, 200mm, 225mm and 250mm.
3. The internal areas of the residential properties on the upper floors will generally be slightly larger than those on the lower floors because of the reducing thickness of the structural walls on the upper floors.
4. Please refer to page 17 of this sales brochure for remarks, legend of the terms and abbreviations shown in the floor plans.
5. The dimensions of floor plans are all structural dimensions in millimeter.

1. 麗坪路39號的層與層之間的高度：停車場為4250毫米、地下為4250毫米、1樓為3500毫米、2樓為3500毫米。
2. 麗坪路39號的樓板（不包括灰泥）的厚度：150毫米、175毫米、200毫米、225毫米及250毫米。
3. 因住宅物業的較高樓層的結構牆的厚度遞減，較高樓層的內部面積，一般比較低樓層的內部面積稍大。
4. 平面圖中顯示之附註、名詞及簡稱請參閱本售樓說明書第17頁。
5. 平面圖之尺規所列寸。

**Notes 備註:**

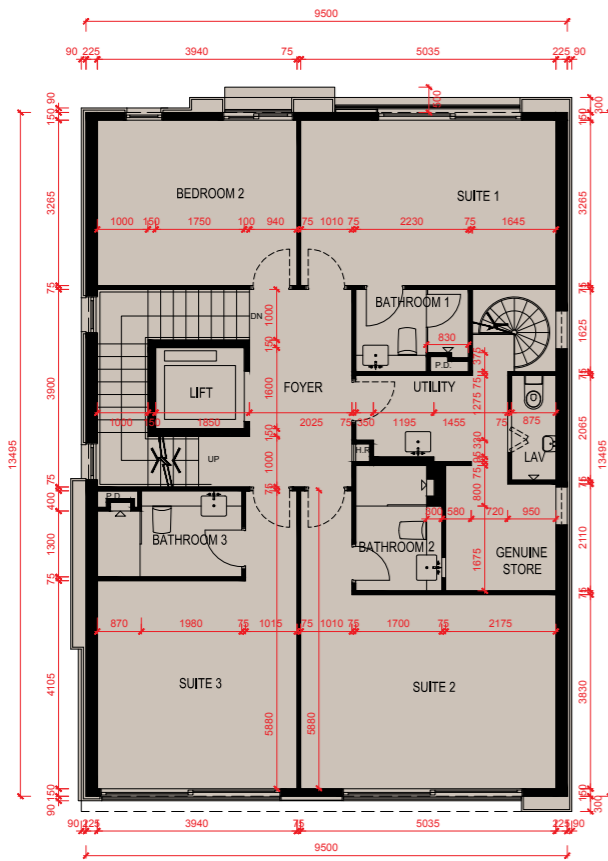
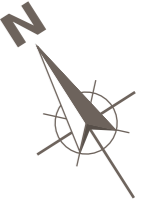
- \* This part in this house has been altered by way of minor works or exempted works under the Buildings Ordinance after completion of the development. Please refer to the floor plan on p.20 & p.21 for the latest condition.
- \* 此洋房此部份因在發展項目落成後進行小型工程或獲《建築物條例》豁免的工程而有所改動，現狀請參閱第20頁及第21頁之平面圖。



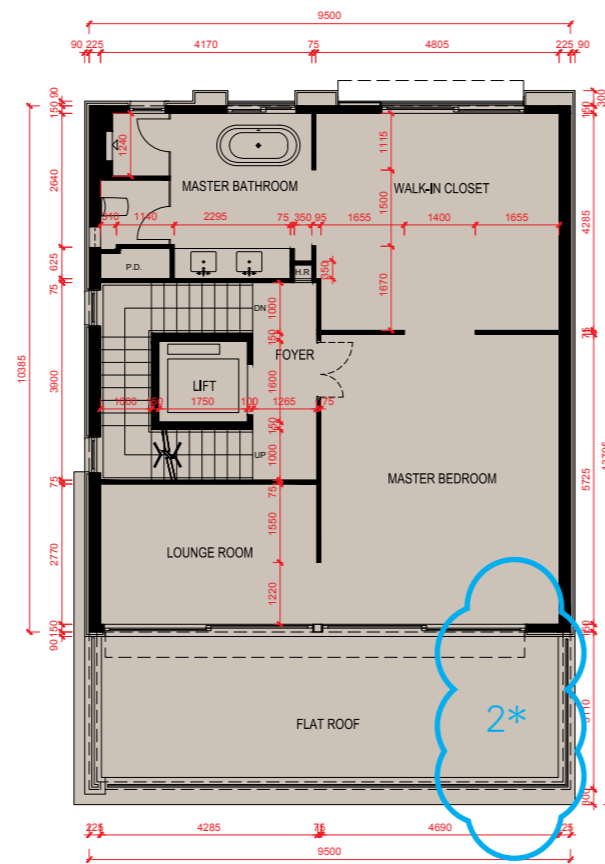
# Floor Plans of Residential Properties in the Development

## 發展項目的住宅物業的樓面平面圖

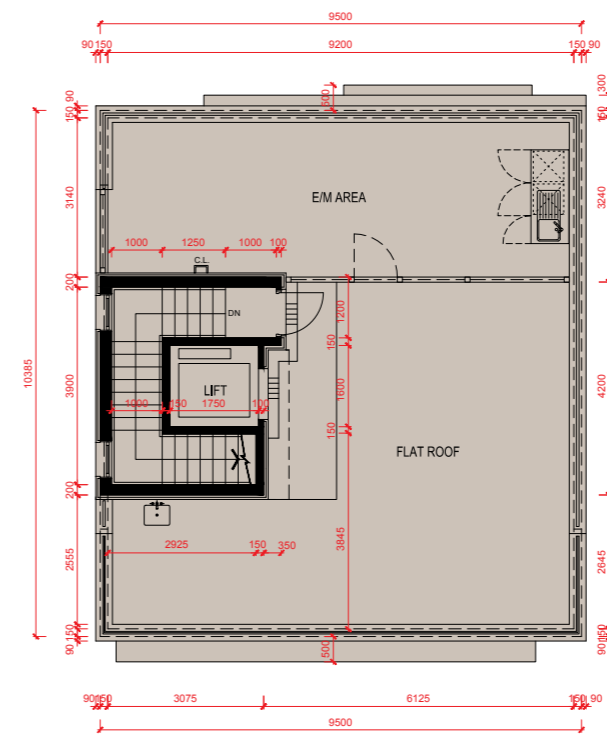
39 Lai Ping Road  
麗坪路39號



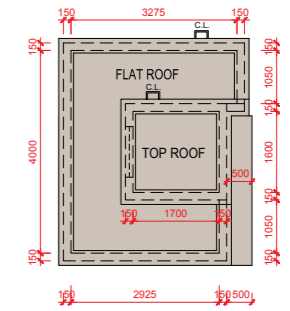
First Floor Plan  
1樓平面圖



Second Floor Plan  
2樓平面圖



Roof Plan  
天台平面圖



Top Roof Plan  
頂層天台平面圖

0M/米      5M/米  
Scale:      比例

# Floor Plans of Residential Properties in the Development 發展項目的住宅物業的樓面平面圖

## Floor plan of 39 Lai Ping Road showing latest layout 麗坪路39號現狀間隔平面圖

### Alteration Work

1. The existing sink is demolished and a longer new planter is built.
2. A new lattice is added.

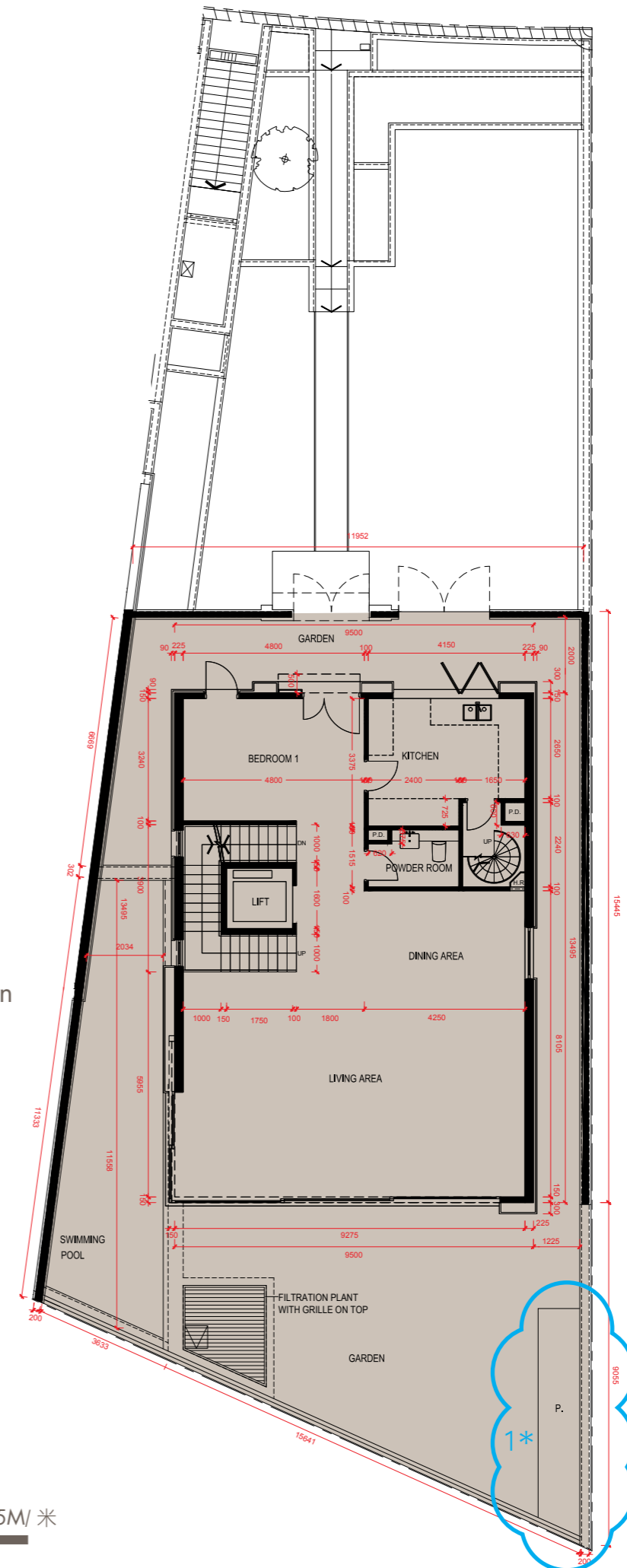
### 經改動工程

1. 原有洗手盆已拆除，新建更長的花槽。
2. 新增柵欄。

Ground Floor Plan  
地下平面圖

1. The floor-to-floor height of 39 Lai Ping Road: 4250mm for Carpark Floor, 4250mm for G/F, 3500mm for 1/F and 3500mm for 2/F.
2. The thickness of the floor slabs (excluding plaster) of 39 Lai Ping Road: 150mm, 175mm, 200mm, 225mm and 250mm.
3. The internal areas of the residential properties on the upper floors will generally be slightly larger than those on the lower floors because of the reducing thickness of the structural walls on the upper floors.
4. Please refer to page 17 of this sales brochure for remarks, legend of the terms and abbreviations shown in the floor plans.
5. The dimensions of floor plans are all structural dimensions in millimeter.

1. 麗坪路39號的層與層之間的高度：停車場為4250毫米、地下為4250毫米、1樓為3500毫米、2樓為3500毫米。
2. 麗坪路39號的樓板（不包括灰泥）的厚度：150毫米、175毫米、200毫米、225毫米及250毫米。
3. 因住宅物業的較高樓層的結構牆的厚度遞減，較高樓層的內部面積，一般比較低樓層的內部面積稍大。
4. 平面圖中顯示之附註、名詞及簡稱請參閱本售樓說明書第17頁。
5. 平面圖之尺規所列數字為以毫米標示之建築結構尺寸。



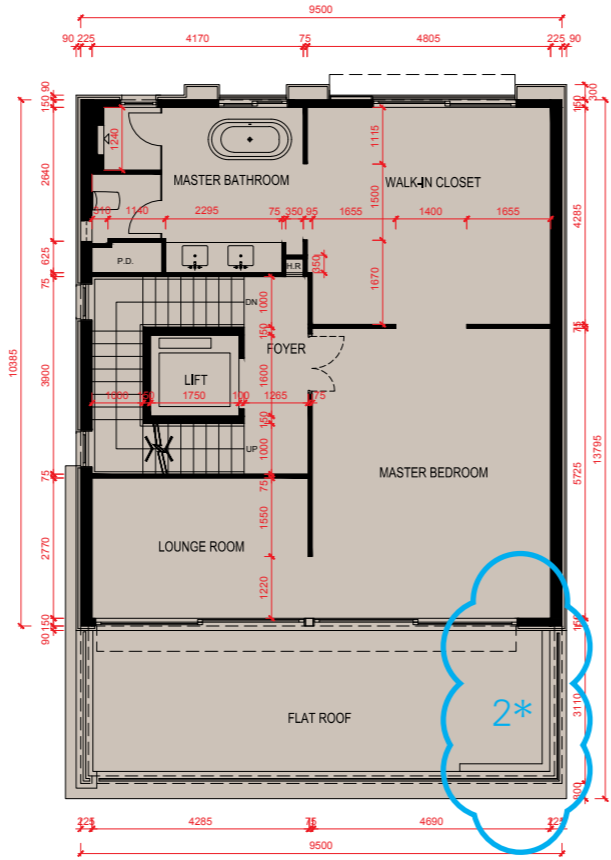
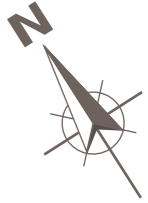
0M/米  
Scale:  
比例

5M/米

# Floor Plans of Residential Properties in the Development

## 發展項目的住宅物業的樓面平面圖

Floor plan of 39 Lai Ping Road showing latest layout  
麗坪路39號現狀間隔平面圖



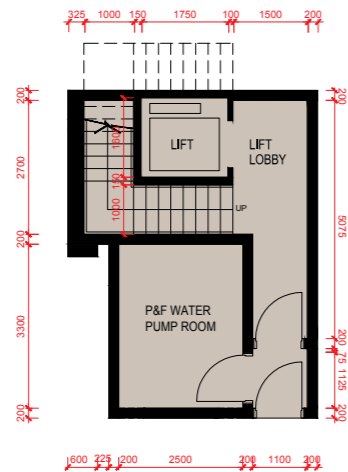
Second Floor Plan  
2樓平面圖

0M/米      5M/米  
Scale:      比例

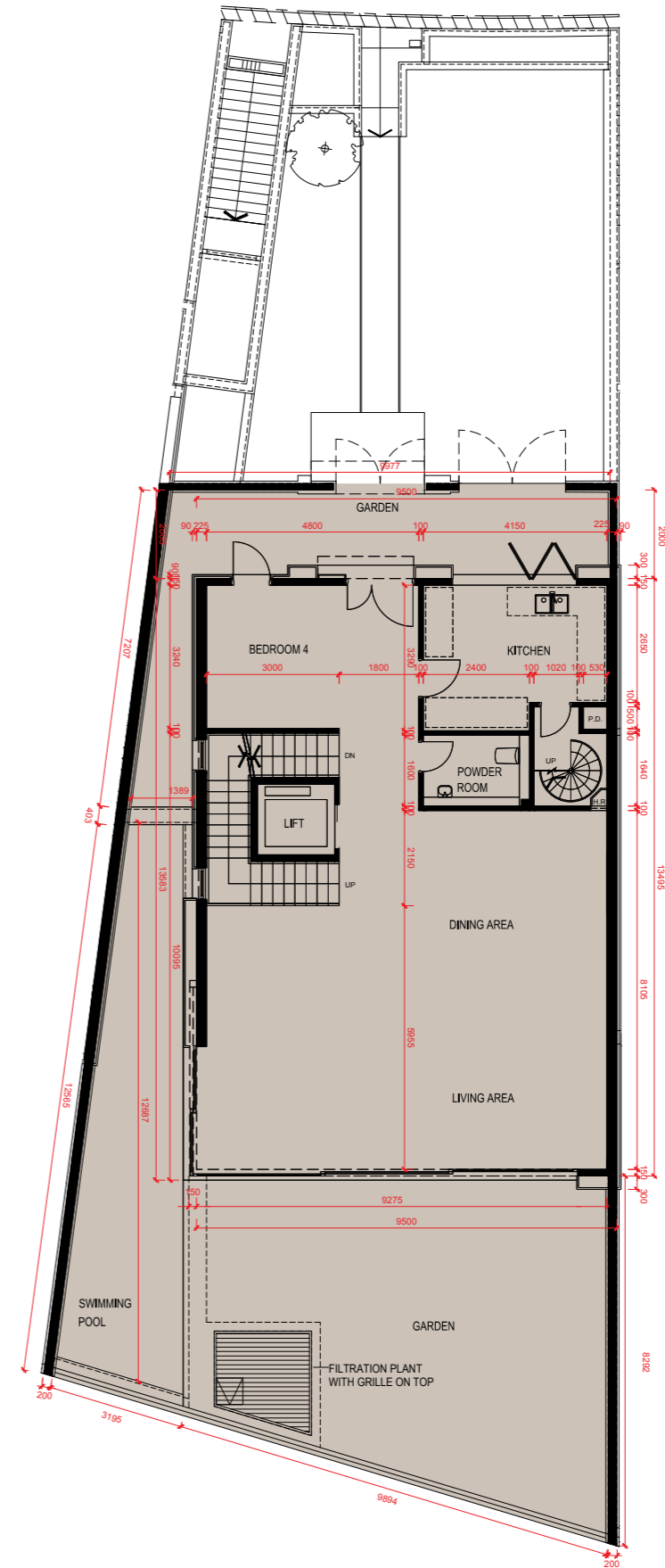
# Floor Plans of Residential Properties in the Development

## 發展項目的住宅物業的樓面平面圖

**41 Lai Ping Road**  
麗坪路41號



Carpark Floor Plan  
停車場平面圖



Ground Floor Plan  
地下平面圖

1. The floor-to-floor height of 41 Lai Ping Road: 4250mm for Carpark Floor, 4250mm for G/F, 3500mm for 1/F and 3500mm for 2/F.
2. The thickness of the floor slabs (excluding plaster) of 41 Lai Ping Road: 150mm, 175mm, 200mm, 225mm and 250mm.
3. The internal areas of the residential properties on the upper floors will generally be slightly larger than those on the lower floors because of the reducing thickness of the structural walls on the upper floors.
4. Please refer to page 17 of this sales brochure for remarks, legend of the terms and abbreviations shown in the floor plans.
5. The dimensions of floor plans are all structural dimensions in millimeter.

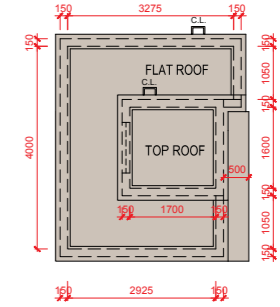
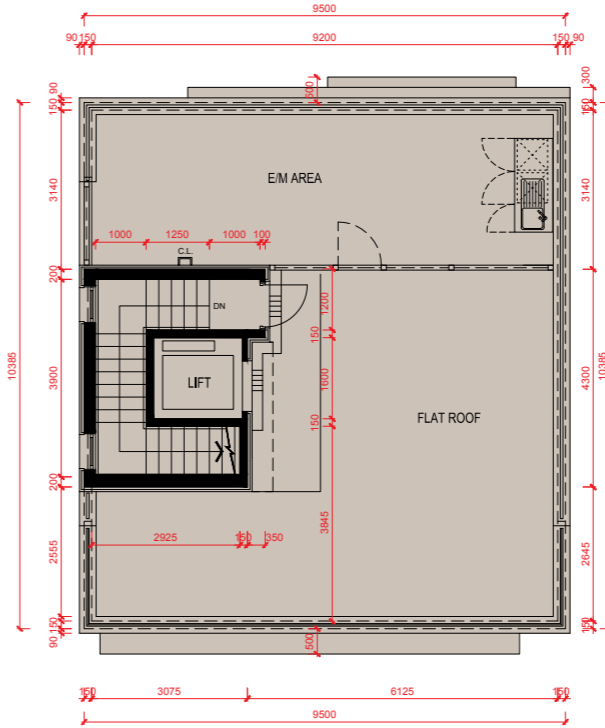
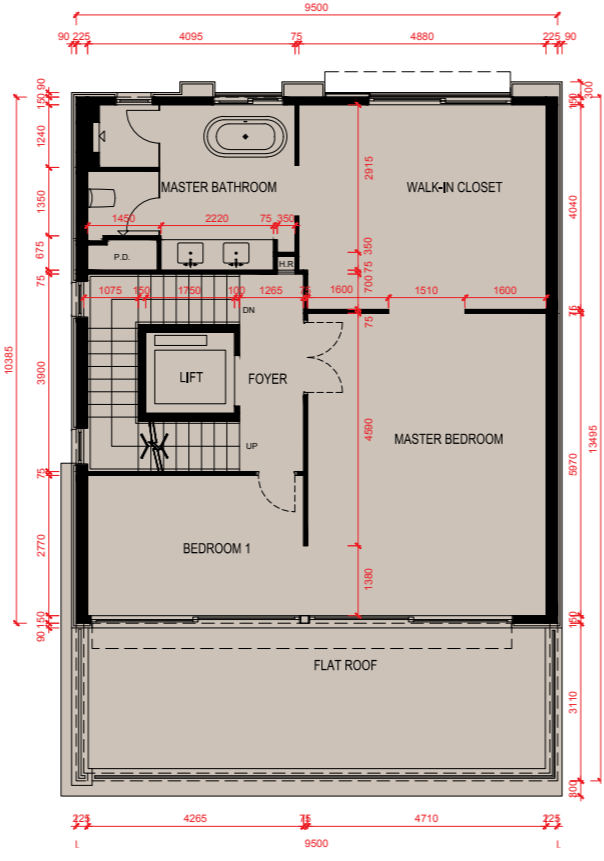
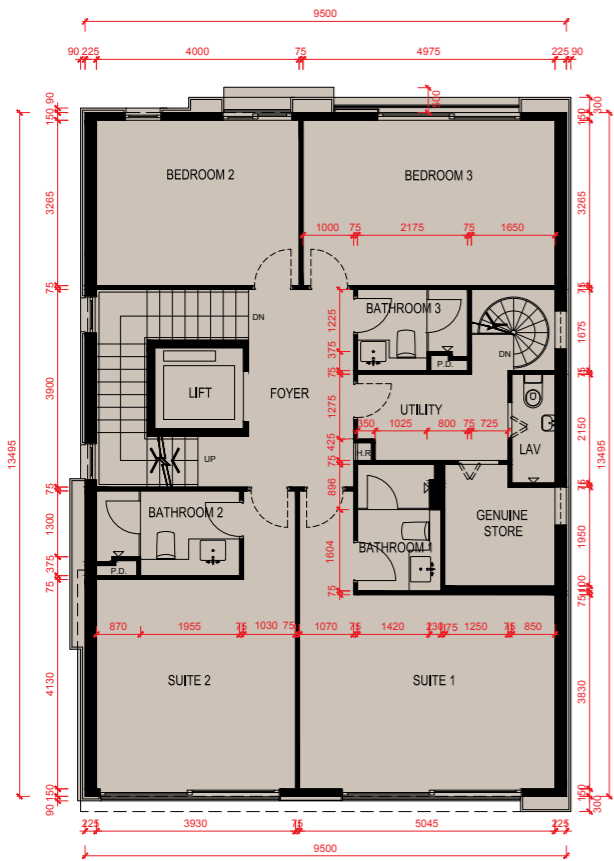
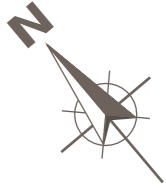
1. 麗坪路41號的層與層之間的高度：停車場為4250毫米、地下為4250毫米、1樓為3500毫米、2樓為3500毫米。
2. 麗坪路41號的樓板（不包括灰泥）的厚度：150毫米、175毫米、200毫米、225毫米及250毫米。
3. 因住宅物業的較高樓層的結構牆的厚度遞減，較高樓層的內部面積，一般比較低樓層的內部面積稍大。
4. 平面圖中顯示之附註、名詞及簡稱請參閱本售樓說明書第17頁。
5. 平面圖之尺規所列數字為以毫米標示之建築結構尺寸。

0M/米  
Scale:  
比例

5M/米

# Floor Plans of Residential Properties in the Development 發展項目的住宅物業的樓面平面圖

41 Lai Ping Road  
麗坪路41號

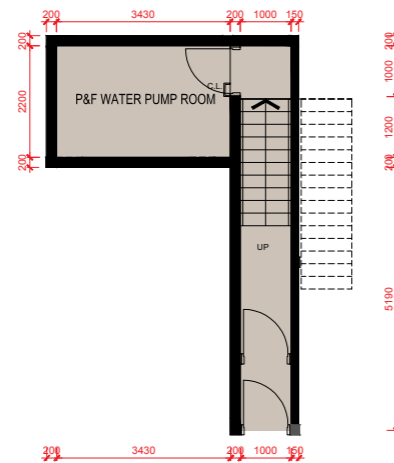


0M/米      5M/米  
Scale: 比例

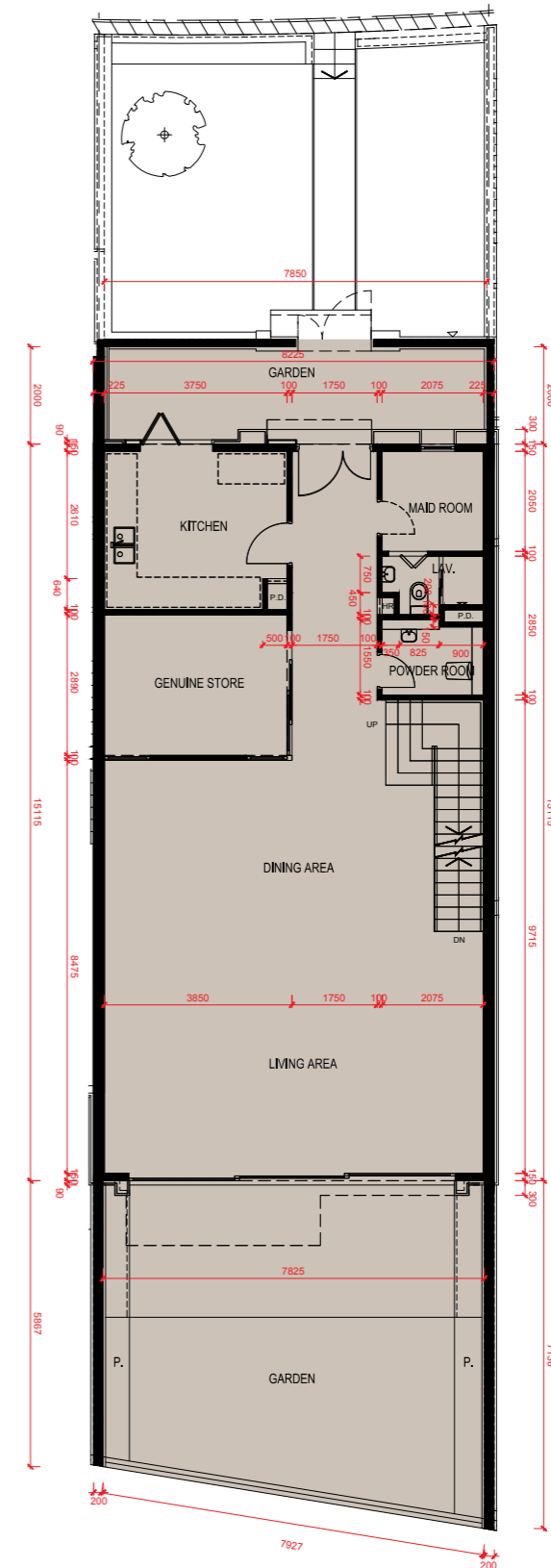
# Floor Plans of Residential Properties in the Development 發展項目的住宅物業的樓面平面圖

## 43 Lai Ping Road

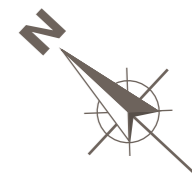
麗坪路43號



Carpark Floor Plan  
停車場平面圖



Ground Floor Plan  
地下平面圖



1. The floor-to-floor height of 43 Lai Ping Road: 4290mm for Carpark Floor, 4250mm for G/F and 3500mm for 1/F.
2. The thickness of the floor slabs (excluding plaster) of 43 Lai Ping Road: 150mm, 175mm, 200mm and 300mm.
3. The internal areas of the residential properties on the upper floors will generally be slightly larger than those on the lower floors because of the reducing thickness of the structural walls on the upper floors.
4. Please refer to page 17 of this sales brochure for remarks, legend of the terms and abbreviations shown in the floor plans.
5. The dimensions of floor plans are all structural dimensions in millimeter.

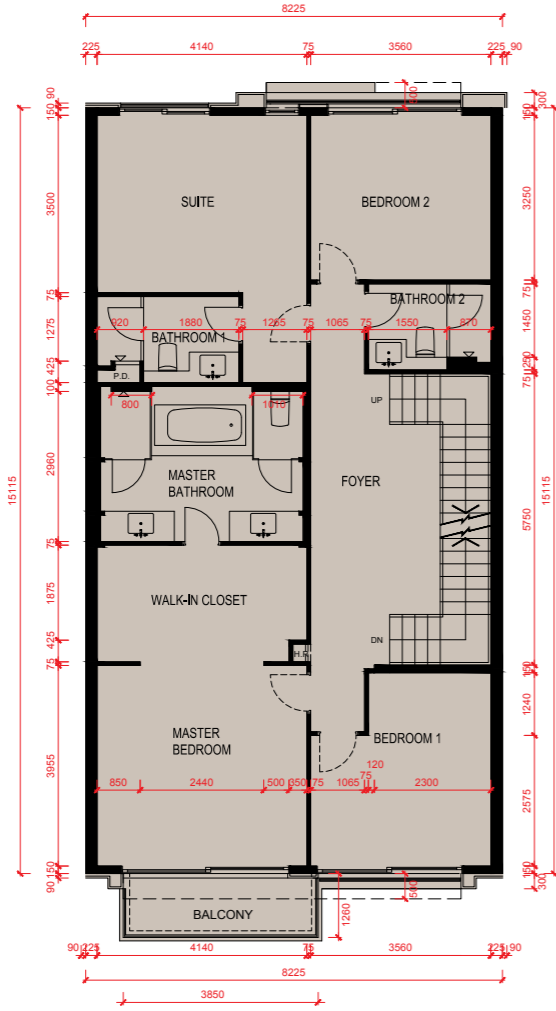
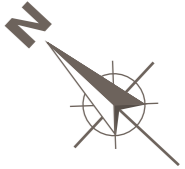
1. 麗坪路43號的層與層之間的高度：停車場為4290毫米、地下為4250毫米及1樓為3500毫米。
2. 麗坪路43號的樓板（不包括灰泥）的厚度：150毫米、175毫米、200毫米及300毫米。
3. 因住宅物業的較高樓層的結構牆的厚度遞減，較高樓層的內部面積，一般比較低樓層的內部面積稍大。
4. 平面圖中顯示之附註、名詞及簡稱請參閱本售樓說明書第17頁。
5. 平面圖之尺規所列數字為以毫米標示之建築結構尺寸。

0M/米      5M/米  
Scale:      比例

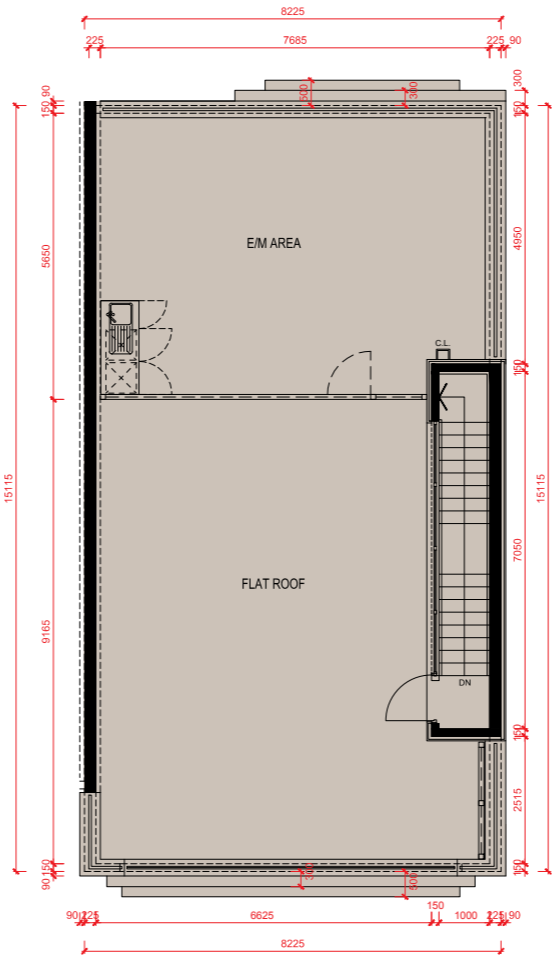


# Floor Plans of Residential Properties in the Development 發展項目的住宅物業的樓面平面圖

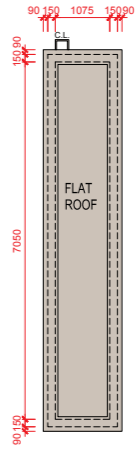
43 Lai Ping Road  
麗坪路43號



First Floor Plan  
1樓平面圖



Roof Plan  
天台平面圖



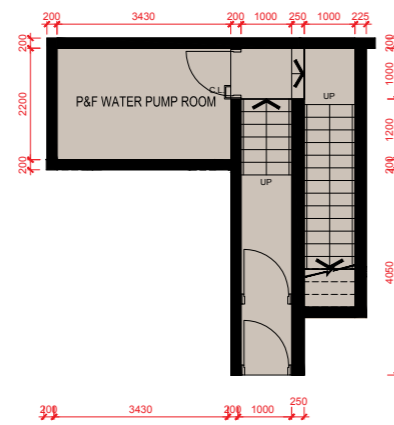
Top Roof Plan  
頂層天台平面圖

0M/米      5M/米  
Scale:      比例

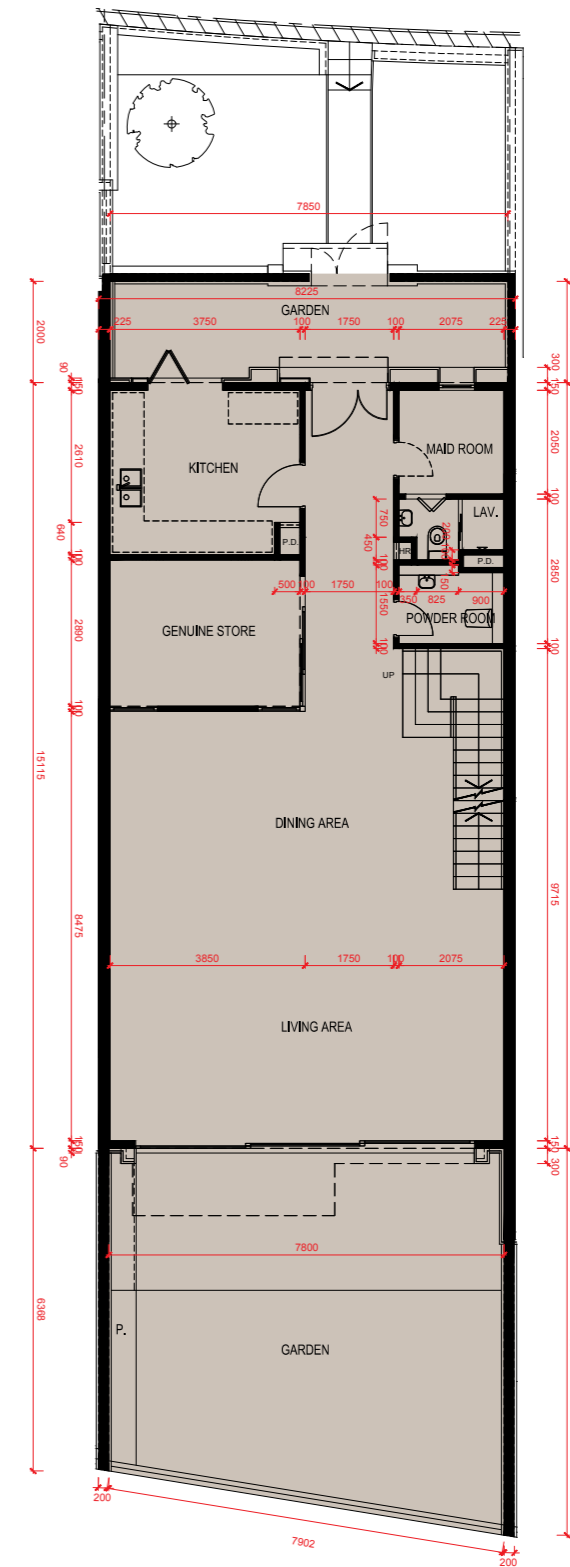
# Floor Plans of Residential Properties in the Development 發展項目的住宅物業的樓面平面圖

## 45 Lai Ping Road

麗坪路45號



Carpark Floor Plan  
停車場平面圖



Ground Floor Plan  
地下平面圖

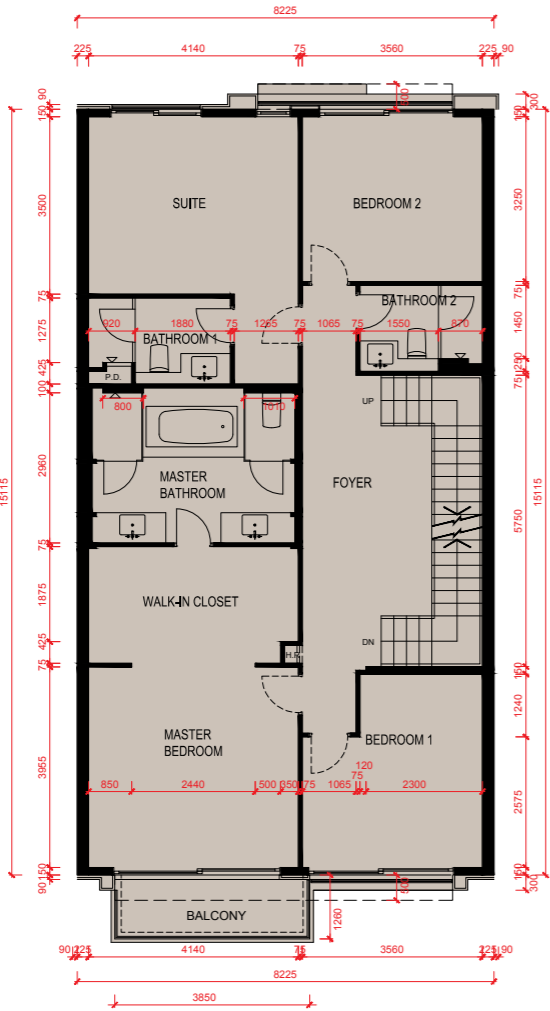
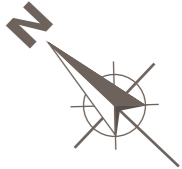
1. The floor-to-floor height of 45 Lai Ping Road: 4600mm for Carpark Floor, 4250mm for G/F and 3500mm for 1/F.
2. The thickness of the floor slabs (excluding plaster) of 45 Lai Ping Road: 150mm, 175mm, 200mm and 300mm.
3. The internal areas of the residential properties on the upper floors will generally be slightly larger than those on the lower floors because of the reducing thickness of the structural walls on the upper floors.
4. Please refer to page 17 of this sales brochure for remarks, legend of the terms and abbreviations shown in the floor plans.
5. The dimensions of floor plans are all structural dimensions in millimeter.

1. 麗坪路45號的層與層之間的高度：停車場為4600毫米、地下為4250毫米及1樓為3500毫米。
2. 麗坪路45號的樓板（不包括灰泥）的厚度：150毫米、175毫米、200毫米及300毫米。
3. 因住宅物業的較高樓層的結構牆的厚度遞減，較高樓層的內部面積，一般比較低樓層的內部面積稍大。
4. 平面圖中顯示之附註、名詞及簡稱請參閱本售樓說明書第17頁。
5. 平面圖之尺規所列數字為以毫米標示之建築結構尺寸。

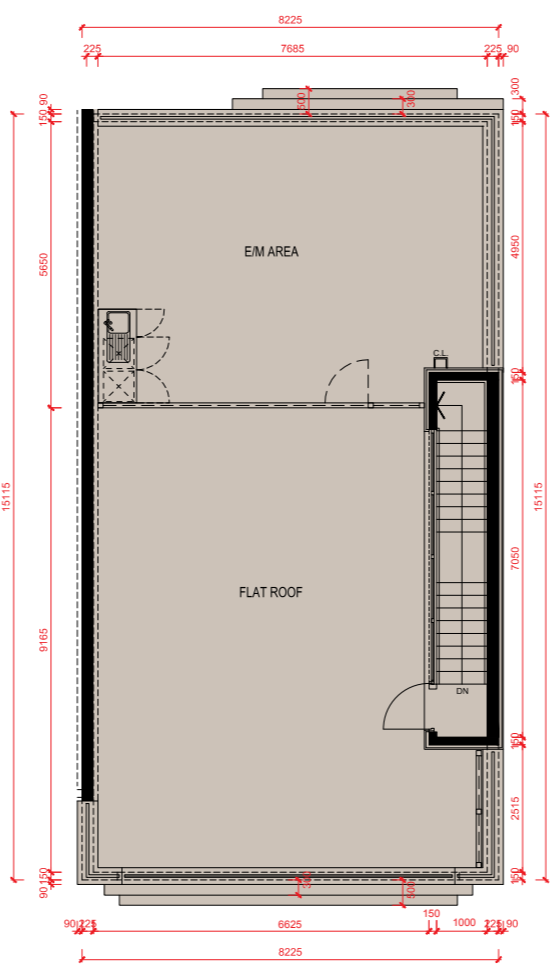
0M/米      5M/米  
Scale:      比例

# Floor Plans of Residential Properties in the Development 發展項目的住宅物業的樓面平面圖

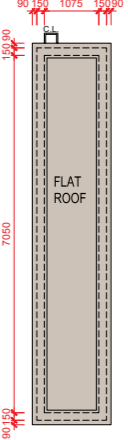
45 Lai Ping Road  
麗坪路45號



First Floor Plan  
1樓平面圖



Roof Plan  
天台平面圖



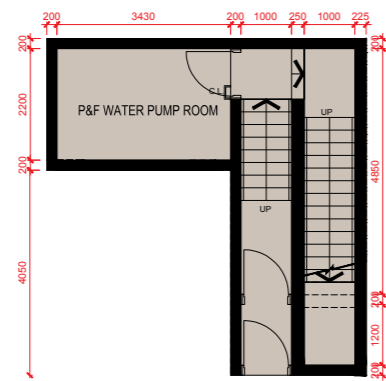
Top Roof Plan  
頂層天台平面圖

0M/米      5M/米  
Scale:      比例

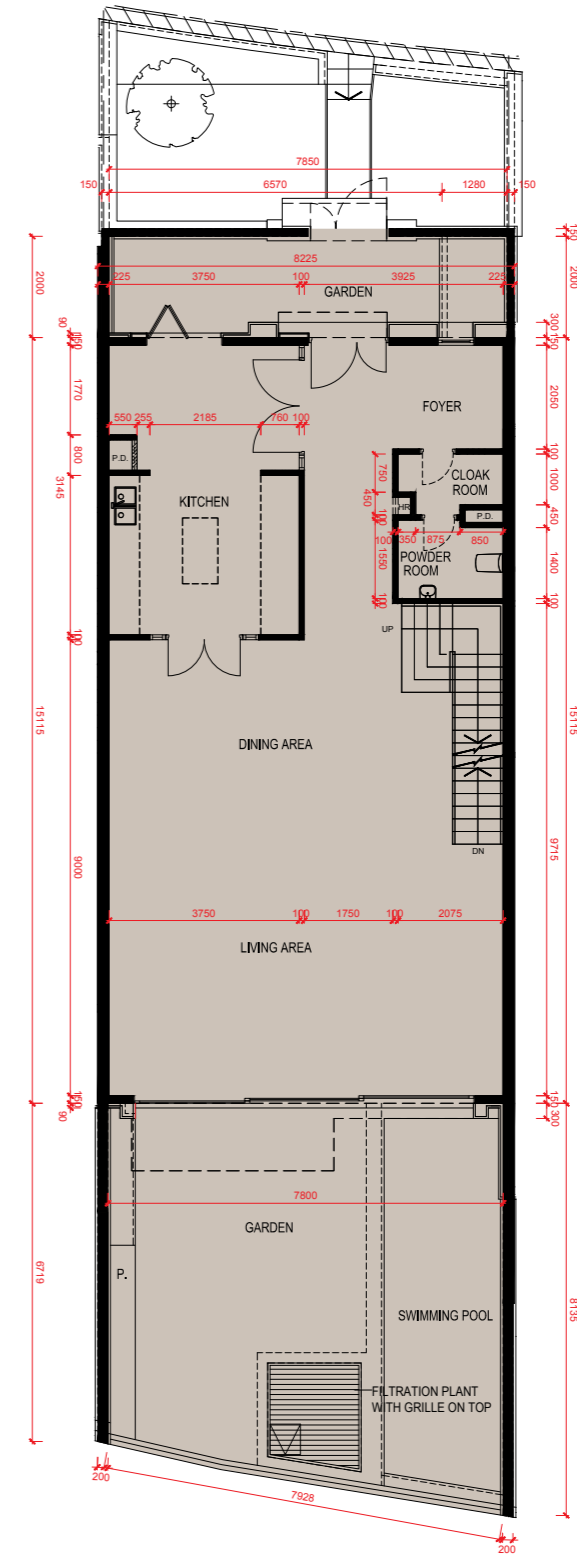
# Floor Plans of Residential Properties in the Development 發展項目的住宅物業的樓面平面圖

47 Lai Ping Road

麗坪路47號



Carpark Floor Plan  
停車場平面圖



Ground Floor Plan  
地下平面圖

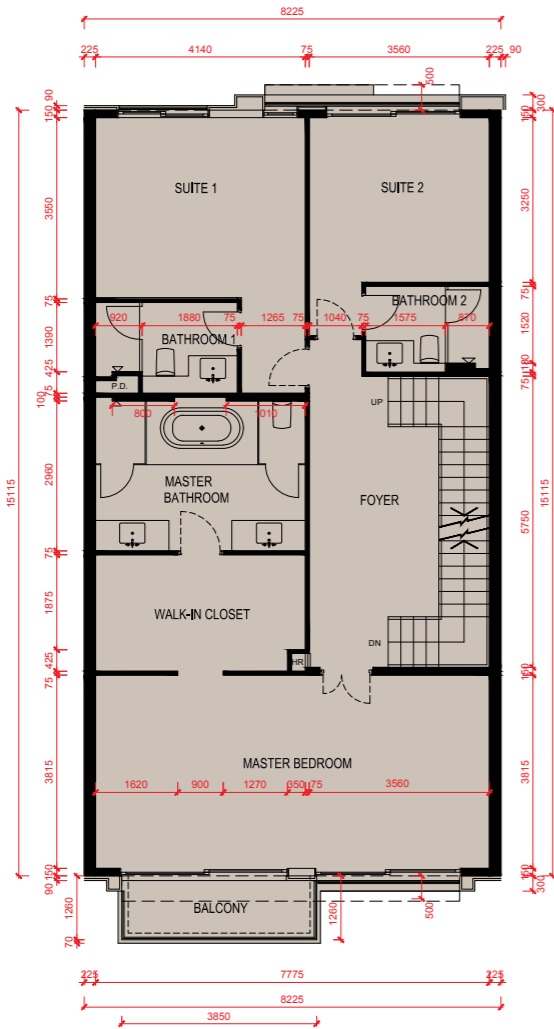
1. The floor-to-floor height of 47 Lai Ping Road: 4490mm for Carpark Floor, 4250mm for G/F and 3500mm for 1/F.
2. The thickness of the floor slabs (excluding plaster) of 47 Lai Ping Road: 150mm, 175mm, 200mm and 300mm.
3. The internal areas of the residential properties on the upper floors will generally be slightly larger than those on the lower floors because of the reducing thickness of the structural walls on the upper floors.
4. Please refer to page 17 of this sales brochure for remarks, legend of the terms and abbreviations shown in the floor plans.
5. The dimensions of floor plans are all structural dimensions in millimeter.

1. 麗坪路47號的層與層之間的高度：停車場為4490毫米、地下為4250毫米及1樓為3500毫米。
2. 麗坪路47號的樓板（不包括灰泥）的厚度：150毫米、175毫米、200毫米及300毫米。
3. 因住宅物業的較高樓層的結構牆的厚度遞減，較高樓層的內部面積，一般比較低樓層的內部面積稍大。
4. 平面圖中顯示之附註、名詞及簡稱請參閱本售樓說明書第17頁。
5. 平面圖之尺規所列數字為以毫米標示之建築結構尺寸。

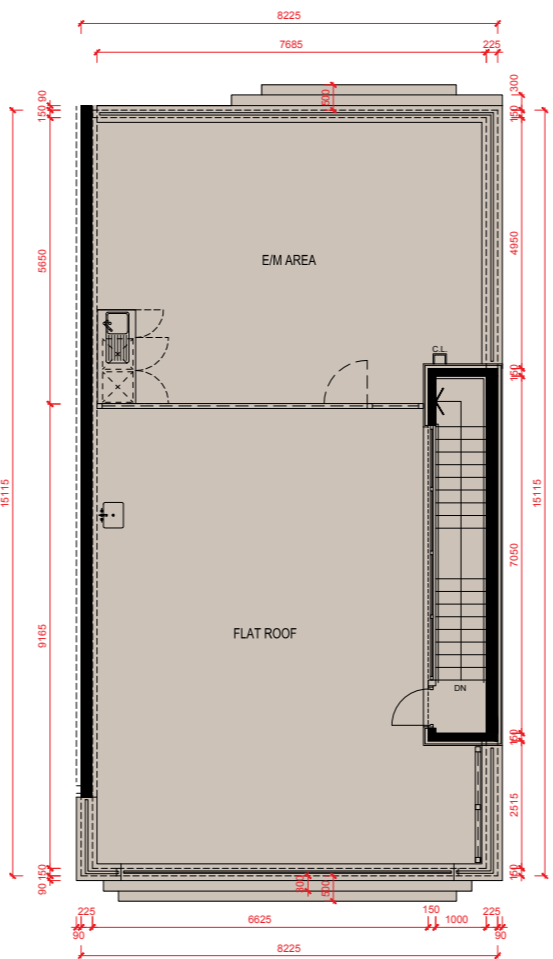
0M/米      5M/米  
Scale:   
比例

# Floor Plans of Residential Properties in the Development 發展項目的住宅物業的樓面平面圖

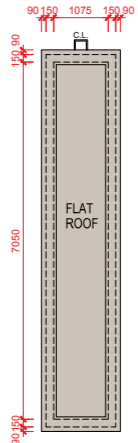
47 Lai Ping Road  
麗坪路47號



First Floor Plan  
1樓平面圖



Roof Plan  
天台平面圖



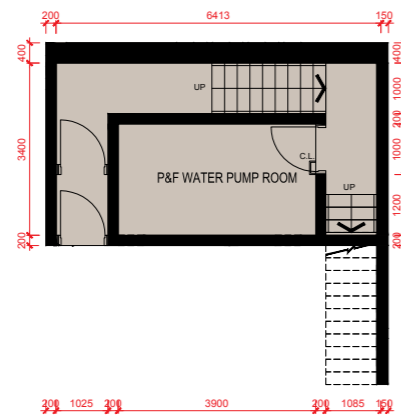
Top Roof Plan  
頂層天台平面圖

0M/米 5M/米  
Scale: 比例

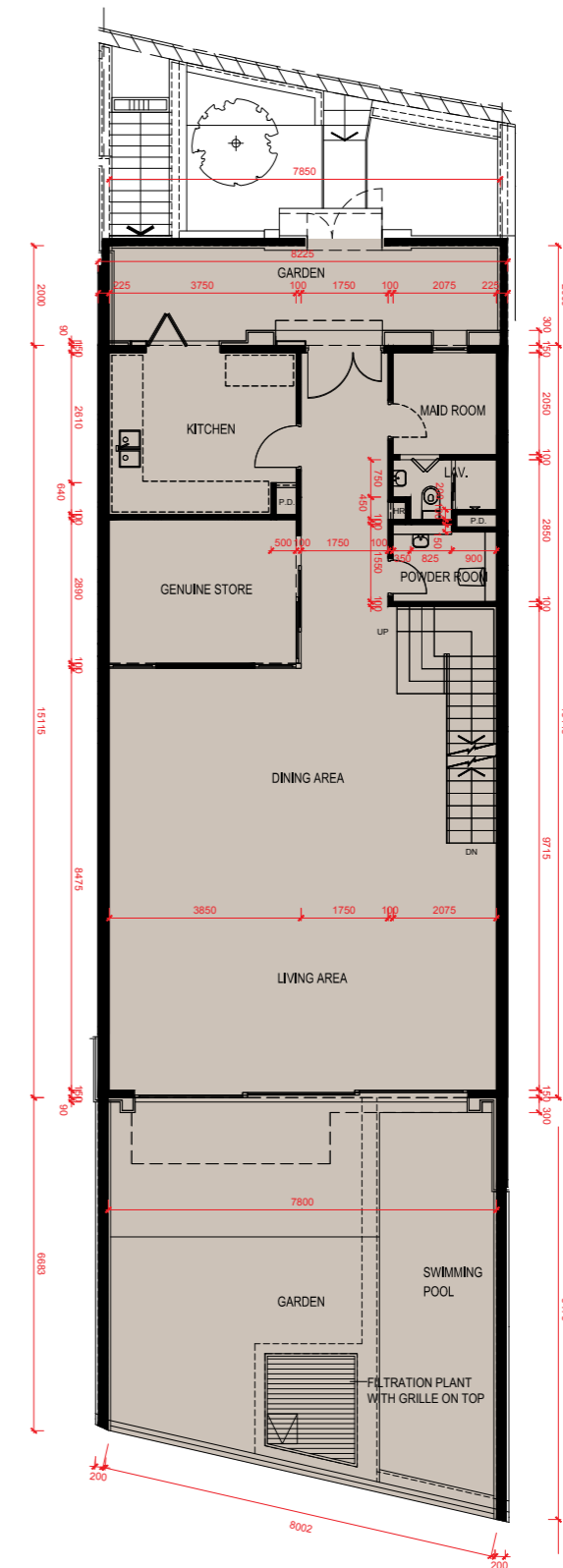
# Floor Plans of Residential Properties in the Development 發展項目的住宅物業的樓面平面圖

49 Lai Ping Road

麗坪路49號



Carpark Floor Plan  
停車場平面圖



Ground Floor Plan  
地下平面圖

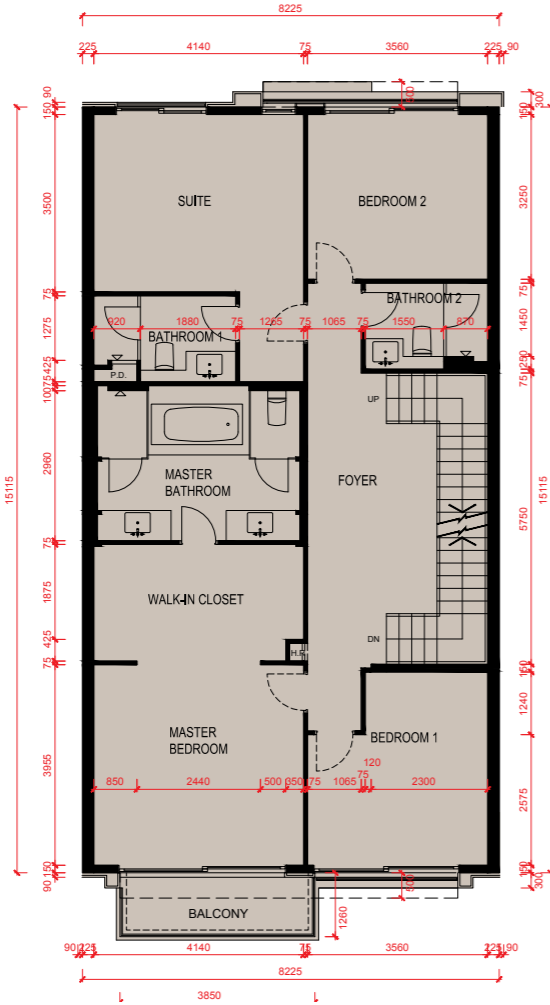
1. The floor-to-floor height of 49 Lai Ping Road: 4320mm for Carpark Floor, 4250mm for G/F and 3500mm for 1/F.
2. The thickness of the floor slabs (excluding plaster) of 49 Lai Ping Road: 150mm, 175mm, 200mm and 300mm.
3. The internal areas of the residential properties on the upper floors will generally be slightly larger than those on the lower floors because of the reducing thickness of the structural walls on the upper floors.
4. Please refer to page 17 of this sales brochure for remarks, legend of the terms and abbreviations shown in the floor plans.
5. The dimensions of floor plans are all structural dimensions in millimeter.

1. 麗坪路49號的層與層之間的高度：停車場為4320毫米、地下為4250毫米及1樓為3500毫米。
2. 麗坪路49號的樓板（不包括灰泥）的厚度：150毫米、175毫米、200毫米及300毫米。
3. 因住宅物業的較高樓層的結構牆的厚度遞減，較高樓層的內部面積，一般比較低樓層的內部面積稍大。
4. 平面圖中顯示之附註、名詞及簡稱請參閱本售樓說明書第17頁。
5. 平面圖之尺規所列數字為以毫米標示之建築結構尺寸。

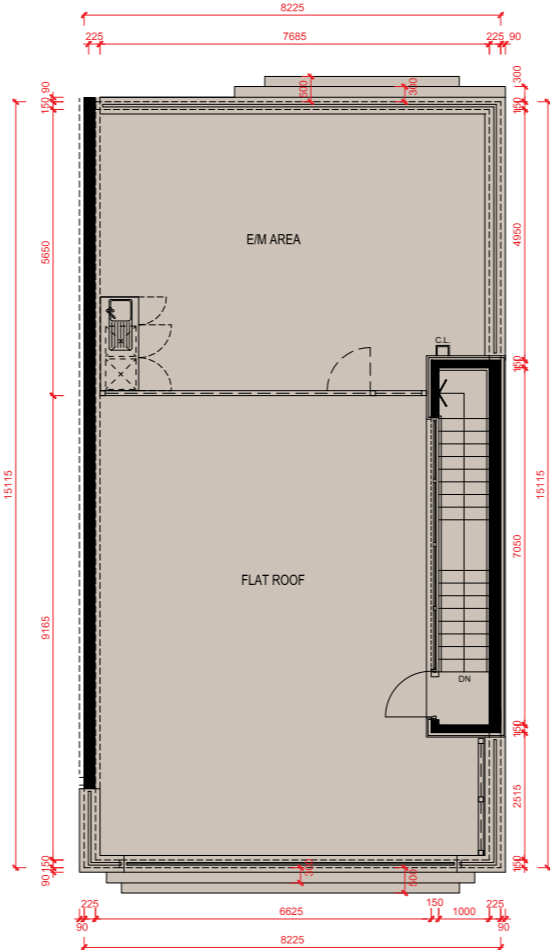
0M/米      5M/米  
Scale:      比例

# Floor Plans of Residential Properties in the Development 發展項目的住宅物業的樓面平面圖

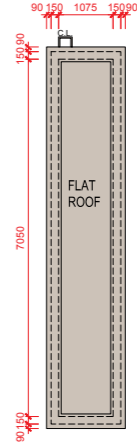
49 Lai Ping Road  
麗坪路49號



First Floor Plan  
1樓平面圖



Roof Plan  
天台平面圖

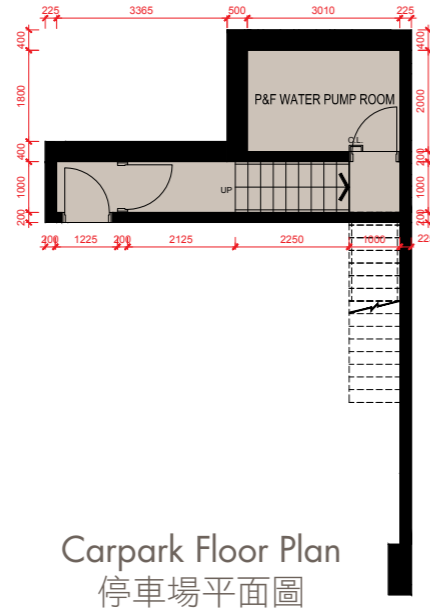
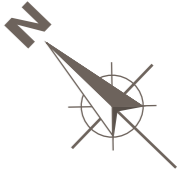


Top Roof Plan  
頂層天台平面圖

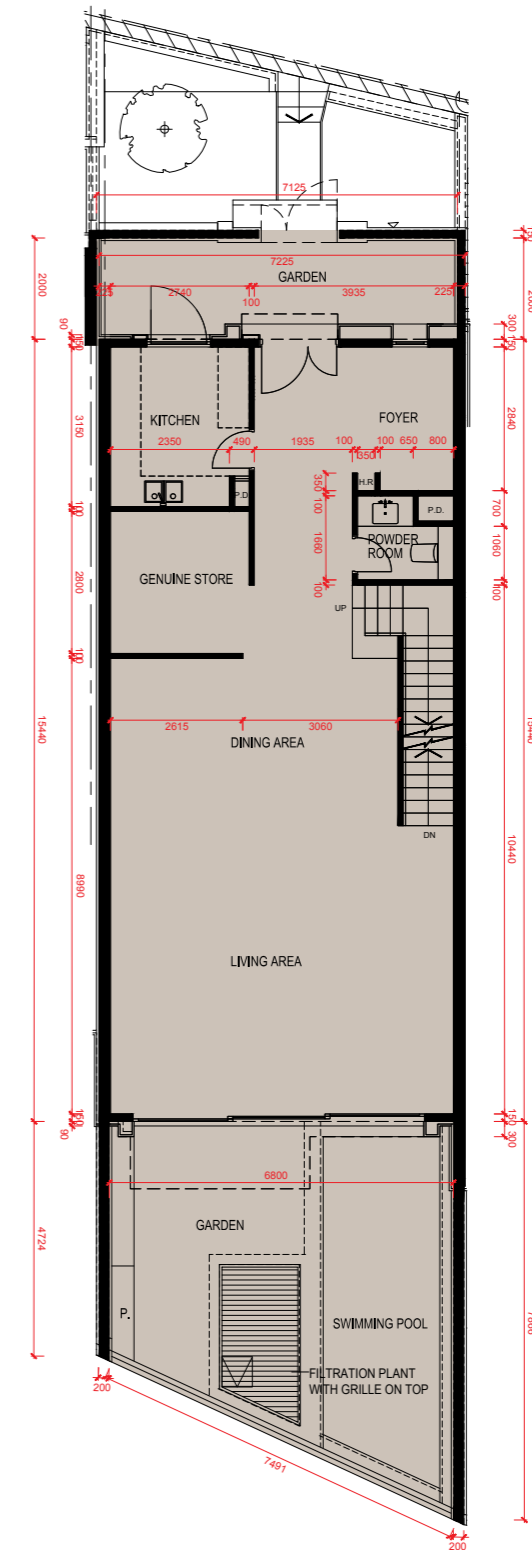
0M/米      5M/米  
Scale:      比例

# Floor Plans of Residential Properties in the Development 發展項目的住宅物業的樓面平面圖

**51 Lai Ping Road**  
麗坪路51號



Ground Floor Plan  
地下平面圖



1. The floor-to-floor height of 51 Lai Ping Road: 4210mm for Carpark Floor, 4250mm for G/F and 3500mm for 1/F.
2. The thickness of the floor slabs (excluding plaster) of 51 Lai Ping Road: 150mm, 175mm, 200mm and 300mm.
3. The internal areas of the residential properties on the upper floors will generally be slightly larger than those on the lower floors because of the reducing thickness of the structural walls on the upper floors.
4. Please refer to page 17 of this sales brochure for remarks, legend of the terms and abbreviations shown in the floor plans.
5. The dimensions of floor plans are all structural dimensions in millimeter.

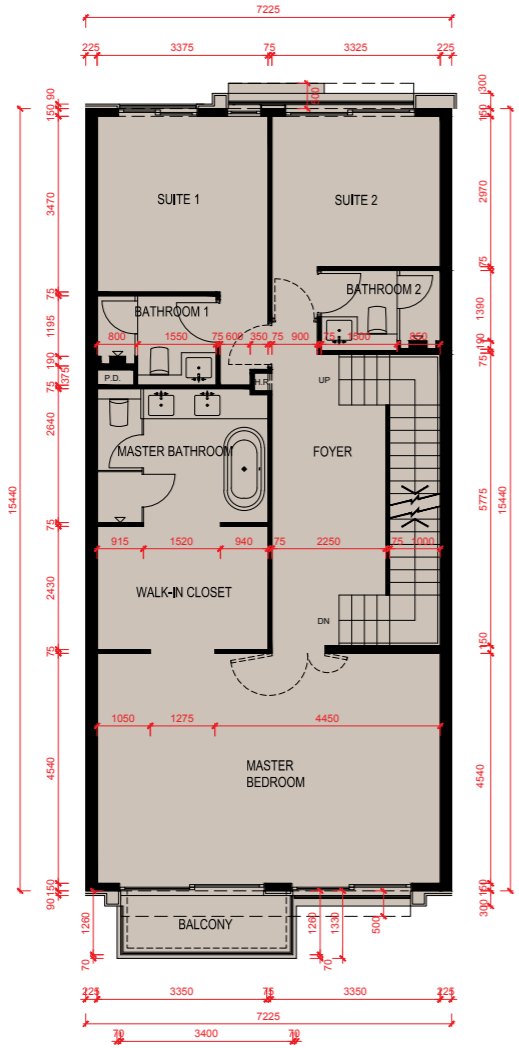
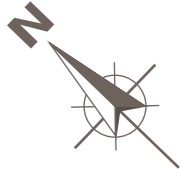
1. 麗坪路51號的層與層之間的高度：停車場為4210毫米、地下為4250毫米及1樓為3500毫米。
2. 麗坪路51號的樓板（不包括灰泥）的厚度：150毫米、175毫米、200毫米及300毫米。
3. 因住宅物業的較高樓層的結構牆的厚度遞減，較高樓層的內部面積，一般比較低樓層的內部面積稍大。
4. 平面圖中顯示之附註、名詞及簡稱請參閱本售樓說明書第17頁。
5. 平面圖之尺規所列數字為以毫米標示之建築結構尺寸。

0M/米      5M/米  
Scale:   
比例

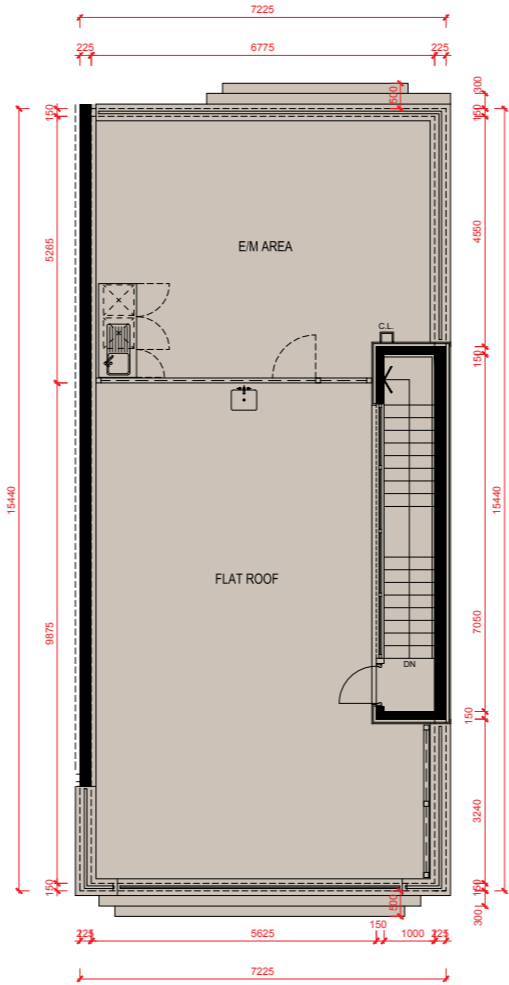


# Floor Plans of Residential Properties in the Development 發展項目的住宅物業的樓面平面圖

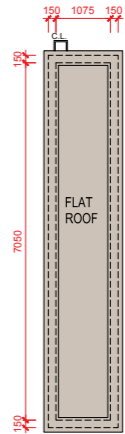
51 Lai Ping Road  
麗坪路51號



First Floor Plan  
1樓平面圖



Roof Plan  
天台平面圖



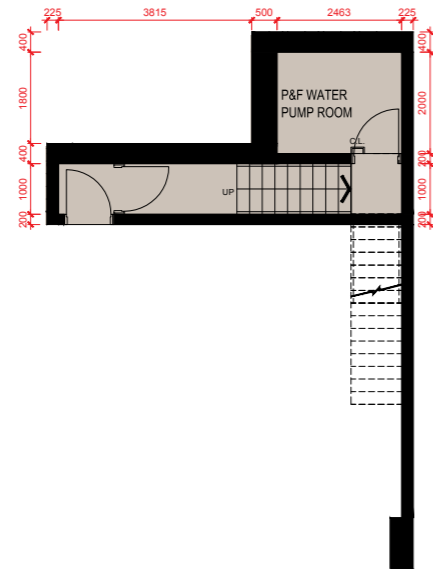
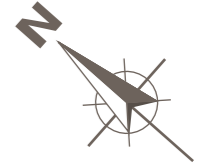
Top Roof Plan  
頂層天台平面圖

0M/米      5M/米  
Scale:      比例

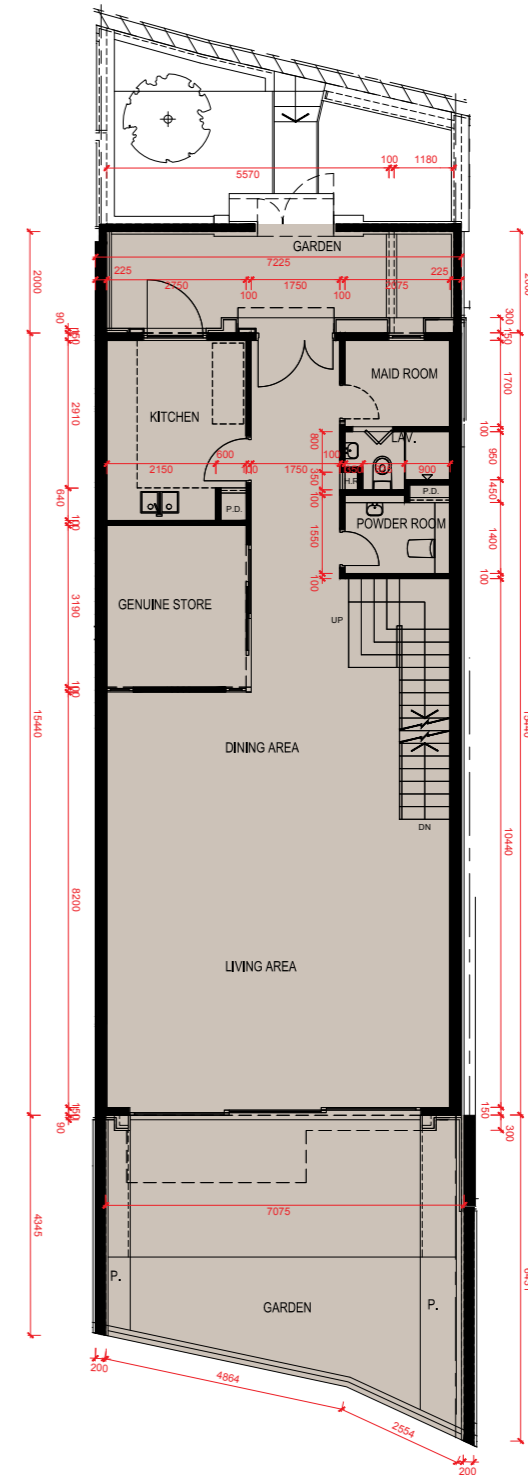
# Floor Plans of Residential Properties in the Development

## 發展項目的住宅物業的樓面平面圖

**53 Lai Ping Road**  
麗坪路53號



Carpark Floor Plan  
停車場平面圖



Ground Floor Plan  
地下平面圖

1. The floor-to-floor height of 53 Lai Ping Road: 4190mm for Carpark Floor, 4250mm for G/F and 3500mm for 1/F.
2. The thickness of the floor slabs (excluding plaster) of 53 Lai Ping Road: 150mm, 175mm, 200mm and 300mm.
3. The internal areas of the residential properties on the upper floors will generally be slightly larger than those on the lower floors because of the reducing thickness of the structural walls on the upper floors.
4. Please refer to page 17 of this sales brochure for remarks, legend of the terms and abbreviations shown in the floor plans.
5. The dimensions of floor plans are all structural dimensions in millimeter.

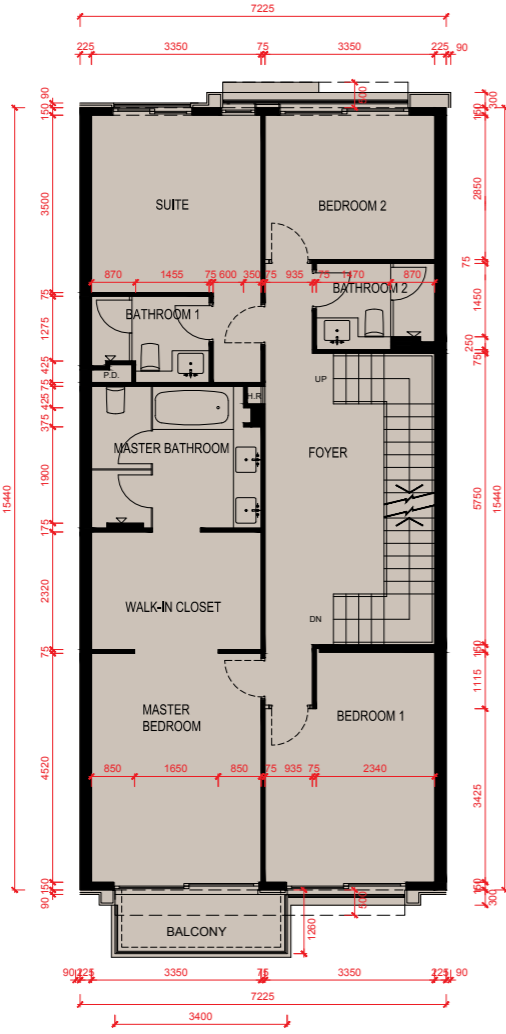
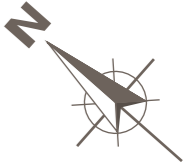
1. 麗坪路53號的層與層之間的高度：停車場為4190毫米、地下為4250毫米及1樓為3500毫米。
2. 麗坪路53號的樓板（不包括灰泥）的厚度：150毫米、175毫米、200毫米及300毫米。
3. 因住宅物業的較高樓層的結構牆的厚度遞減，較高樓層的內部面積，一般比較低樓層的內部面積稍大。
4. 平面圖中顯示之附註、名詞及簡稱請參閱本售樓說明書第17頁。
5. 平面圖之尺規所列數字為以毫米標示之建築結構尺寸。



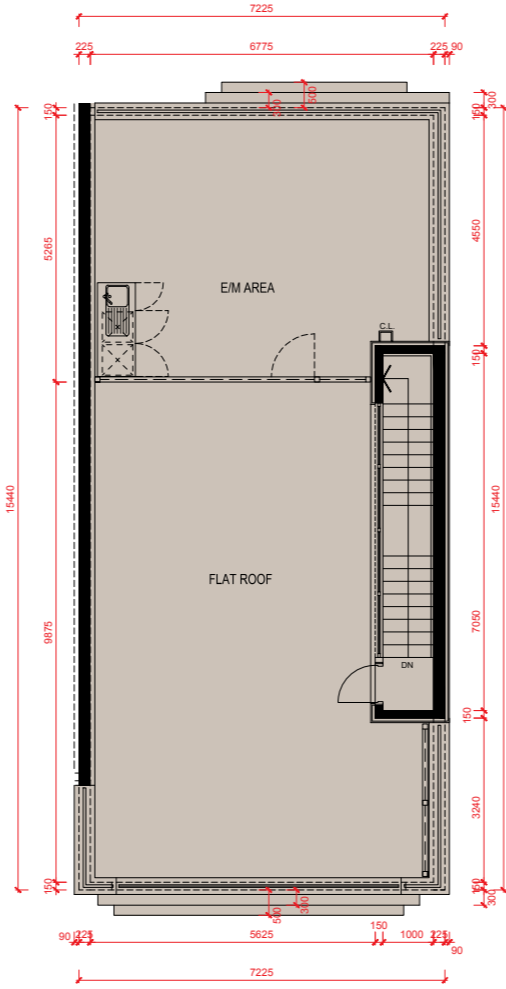
# Floor Plans of Residential Properties in the Development

## 發展項目的住宅物業的樓面平面圖

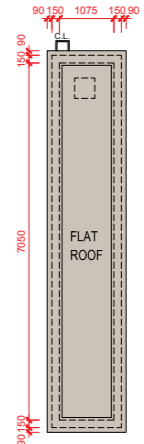
53 Lai Ping Road  
麗坪路53號



First Floor Plan  
1樓平面圖



Roof Plan  
天台平面圖

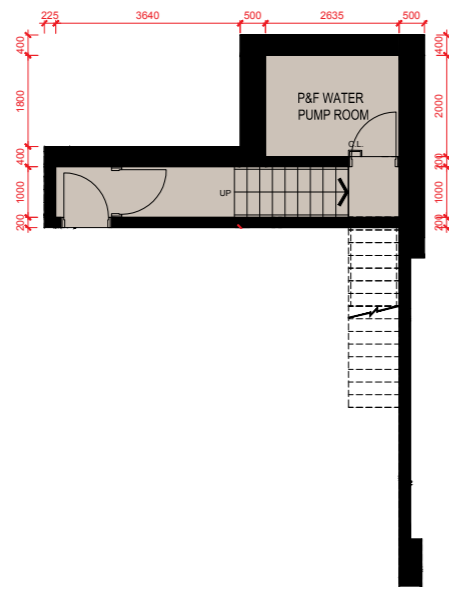


Top Roof Plan  
頂層天台平面圖

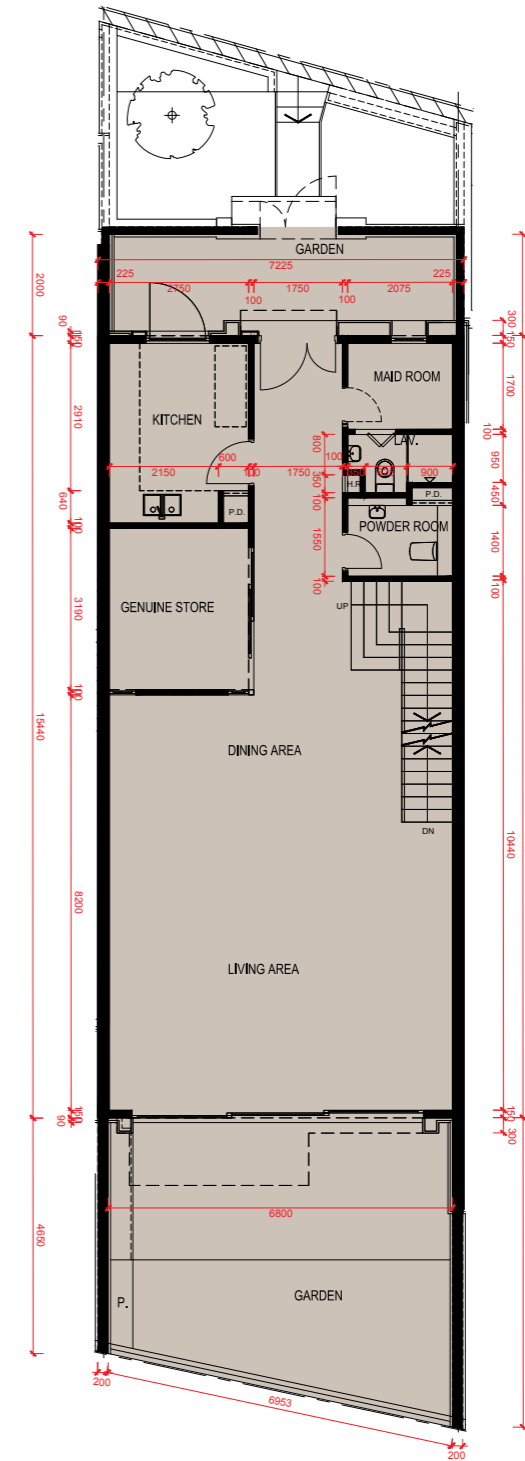
0M/米      5M/米  
Scale:      比例

# Floor Plans of Residential Properties in the Development 發展項目的住宅物業的樓面平面圖

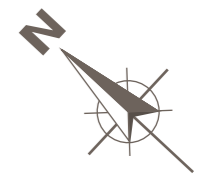
**55 Lai Ping Road**  
麗坪路55號



Carpark Floor Plan  
停車場平面圖



Ground Floor Plan  
地下平面圖



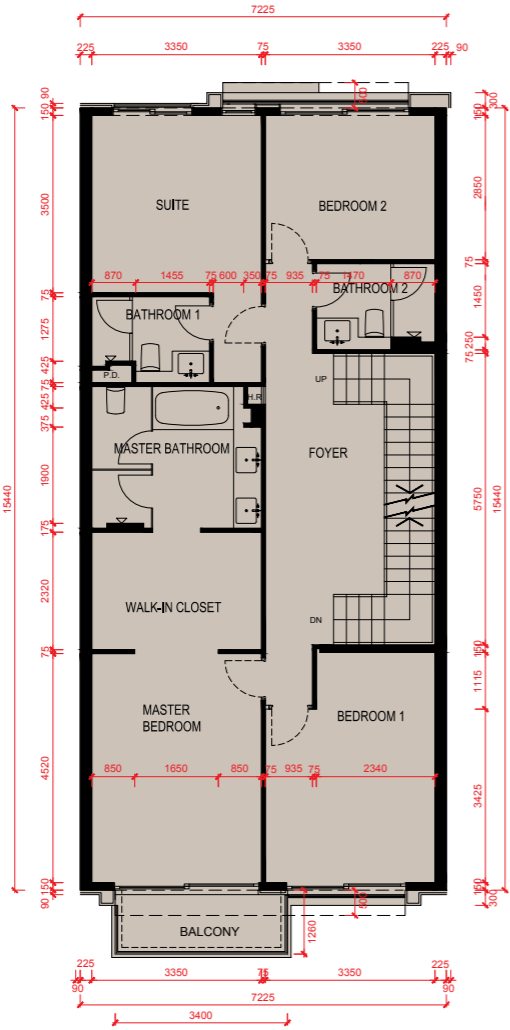
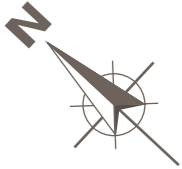
1. The floor-to-floor height of 55 Lai Ping Road: 4425mm for Carpark Floor, 4250mm for G/F and 3500mm for 1/F.
2. The thickness of the floor slabs (excluding plaster) of 55 Lai Ping Road: 150mm, 175mm, 200mm and 300mm.
3. The internal areas of the residential properties on the upper floors will generally be slightly larger than those on the lower floors because of the reducing thickness of the structural walls on the upper floors.
4. Please refer to page 17 of this sales brochure for remarks, legend of the terms and abbreviations shown in the floor plans.
5. The dimensions of floor plans are all structural dimensions in millimeter.

1. 麗坪路55號的層與層之間的高度：停車場為4425毫米、地下為4250毫米及1樓為3500毫米。
2. 麗坪路55號的樓板（不包括灰泥）的厚度：150毫米、175毫米、200毫米及300毫米。
3. 因住宅物業的較高樓層的結構牆的厚度遞減，較高樓層的內部面積，一般比較低樓層的內部面積稍大。
4. 平面圖中顯示之附註、名詞及簡稱請參閱本售樓說明書第17頁。
5. 平面圖之尺規所列數字為以毫米標示之建築結構尺寸。

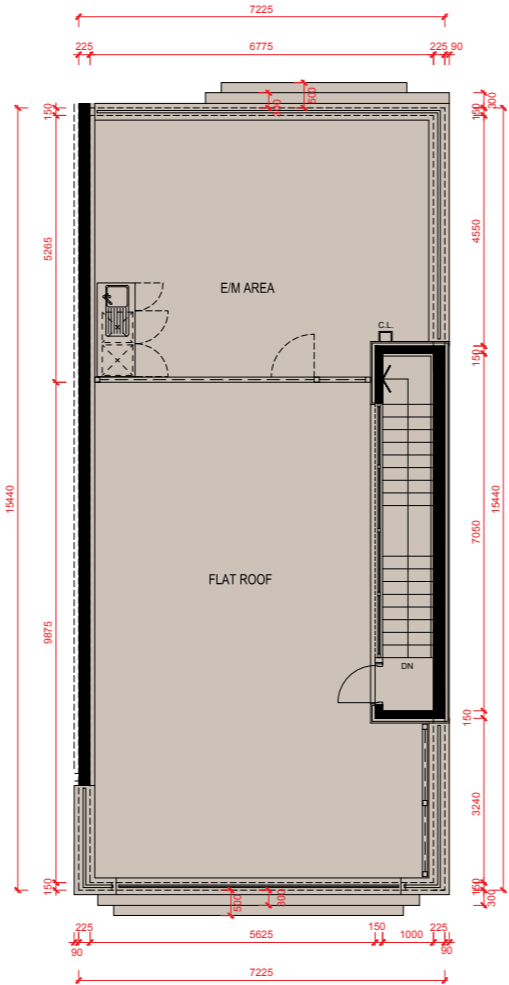
0M/米      5M/米  
Scale:      比例

# Floor Plans of Residential Properties in the Development 發展項目的住宅物業的樓面平面圖

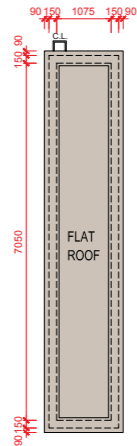
55 Lai Ping Road  
麗坪路55號



First Floor Plan  
1樓平面圖



Roof Plan  
天台平面圖



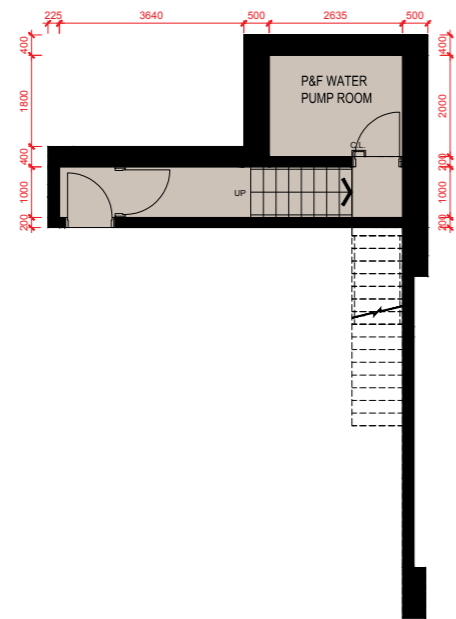
Top Roof Plan  
頂層天台平面圖

0M/米  
Scale:  
比例

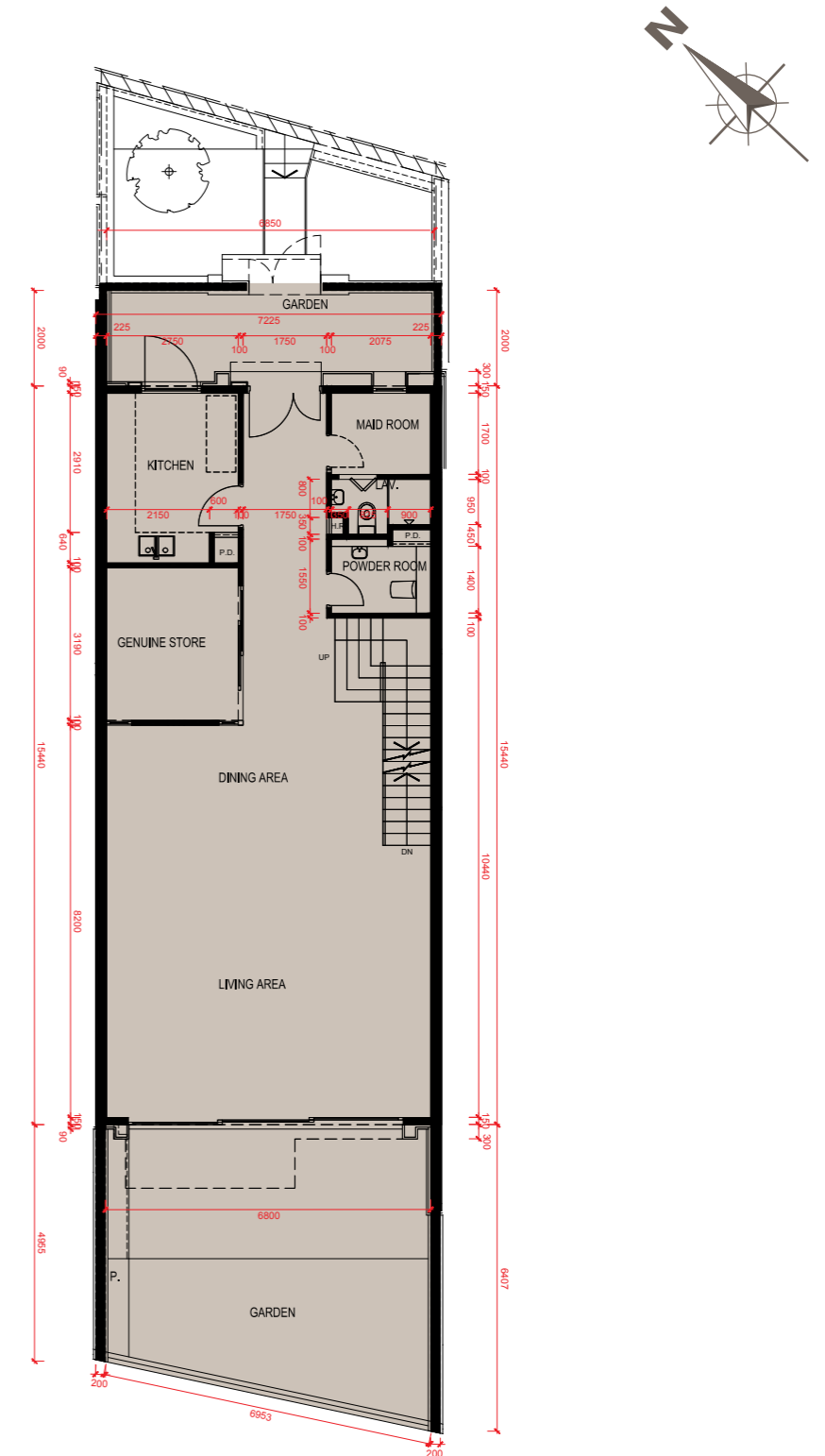
# Floor Plans of Residential Properties in the Development

## 發展項目的住宅物業的樓面平面圖

**57 Lai Ping Road**  
麗坪路57號



Carpark Floor Plan  
停車場平面圖



Ground Floor Plan  
地下平面圖

1. The floor-to-floor height of 57 Lai Ping Road: 4100mm for Carpark Floor, 4250mm for G/F and 3500mm for 1/F.
2. The thickness of the floor slabs (excluding plaster) of 57 Lai Ping Road: 150mm, 175mm, 200mm and 300mm.
3. The internal areas of the residential properties on the upper floors will generally be slightly larger than those on the lower floors because of the reducing thickness of the structural walls on the upper floors.
4. Please refer to page 17 of this sales brochure for remarks, legend of the terms and abbreviations shown in the floor plans.
5. The dimensions of floor plans are all structural dimensions in millimeter.

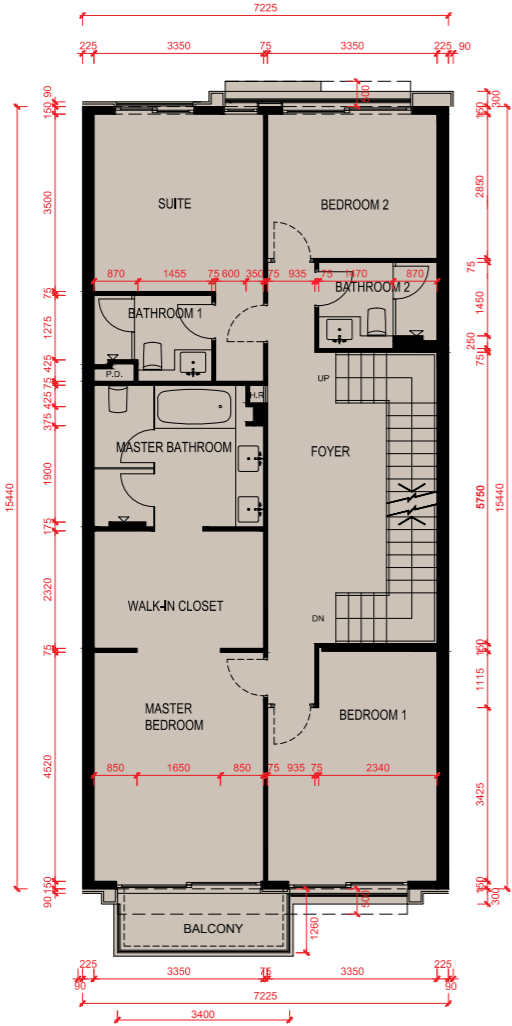
1. 麗坪路57號的層與層之間的高度：停車場為4100毫米、地下為4250毫米及1樓為3500毫米。
2. 麗坪路57號的樓板（不包括灰泥）的厚度：150毫米、175毫米、200毫米及300毫米。
3. 因住宅物業的較高樓層的結構牆的厚度遞減，較高樓層的內部面積，一般比較低樓層的內部面積稍大。
4. 平面圖中顯示之附註、名詞及簡稱請參閱本售樓說明書第17頁。
5. 平面圖之尺規所列數字為以毫米標示之建築結構尺寸。

0M/米      5M/米  
Scale:      比例

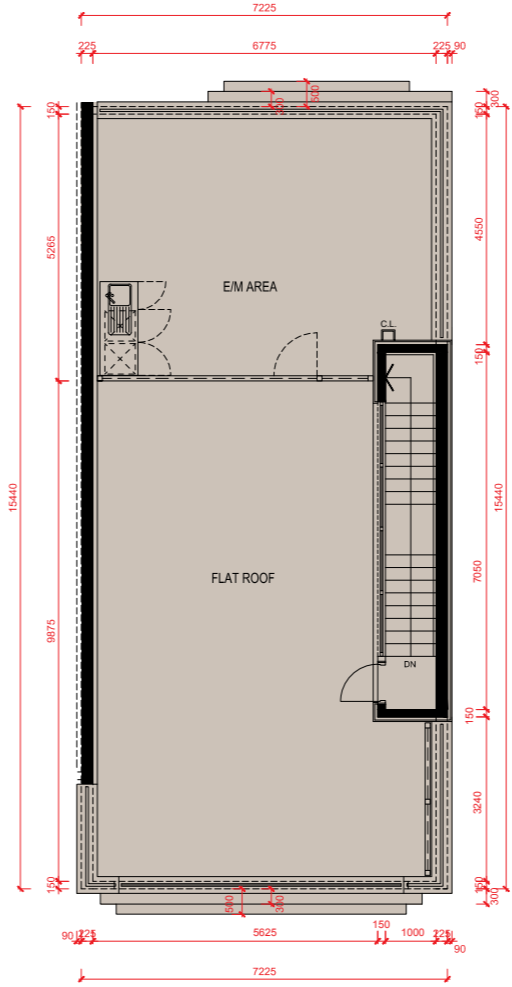
# Floor Plans of Residential Properties in the Development

## 發展項目的住宅物業的樓面平面圖

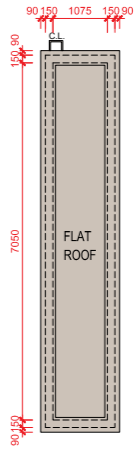
57 Lai Ping Road  
麗坪路57號



First Floor Plan  
1樓平面圖



Roof Plan  
天台平面圖



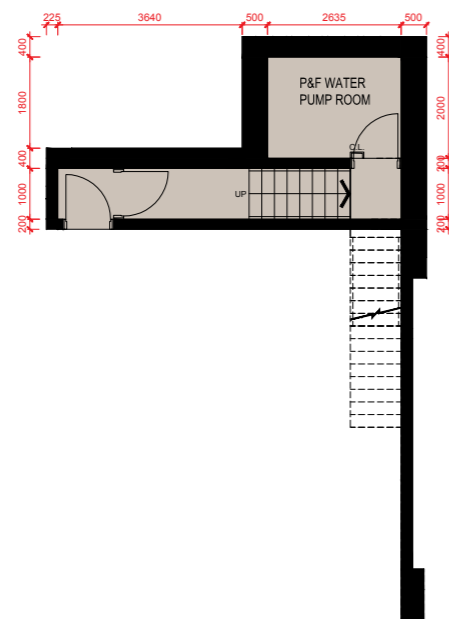
Top Roof Plan  
頂層天台平面圖

0M/米  
Scale:  
比例

5M/米

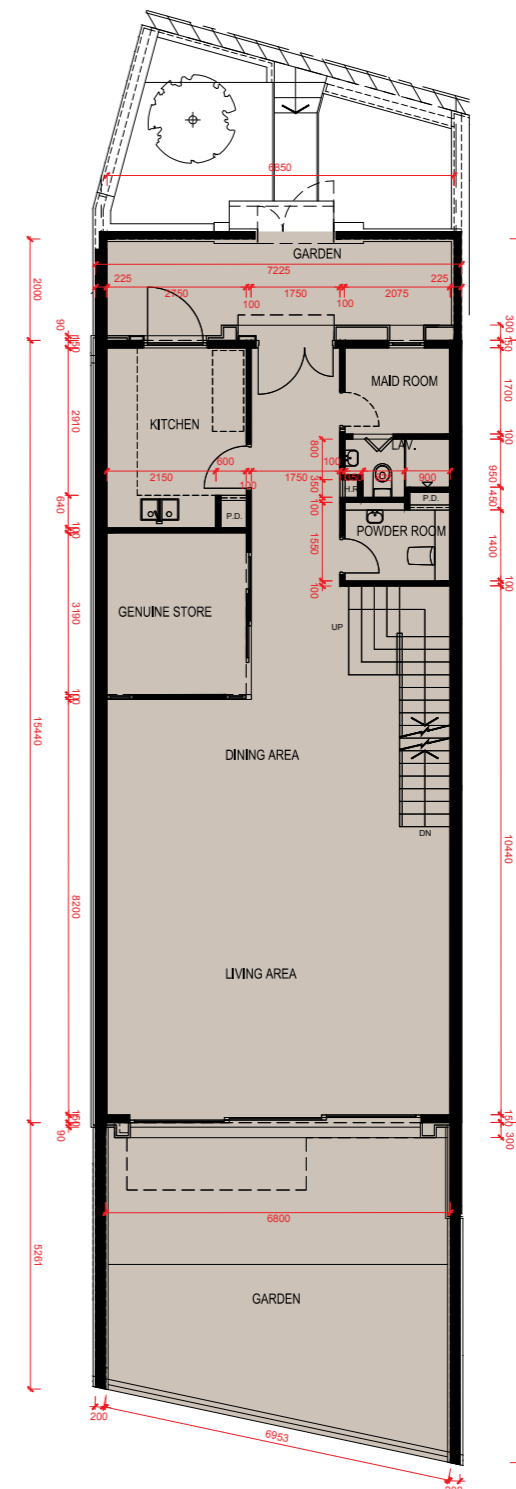
# Floor Plans of Residential Properties in the Development 發展項目的住宅物業的樓面平面圖

**59 Lai Ping Road**  
麗坪路59號



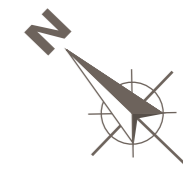
**Carpark Floor Plan**  
停車場平面圖

**Ground Floor Plan**  
地下平面圖



1. The floor-to-floor height of 59 Lai Ping Road: 3990mm for Carpark Floor, 4250mm for G/F and 3500mm for 1/F.
2. The thickness of the floor slabs (excluding plaster) of 59 Lai Ping Road: 150mm, 175mm, 200mm and 300mm.
3. The internal areas of the residential properties on the upper floors will generally be slightly larger than those on the lower floors because of the reducing thickness of the structural walls on the upper floors.
4. Please refer to page 17 of this sales brochure for remarks, legend of the terms and abbreviations shown in the floor plans.
5. The dimensions of floor plans are all structural dimensions in millimeter.

1. 麗坪路59號的層與層之間的高度：停車場為3990毫米、地下為4250毫米及1樓為3500毫米。
2. 麗坪路59號的樓板（不包括灰泥）的厚度：150毫米、175毫米、200毫米及300毫米。
3. 因住宅物業的較高樓層的結構牆的厚度遞減，較高樓層的內部面積，一般比較低樓層的內部面積稍大。
4. 平面圖中顯示之附註、名詞及簡稱請參閱本售樓說明書第17頁。
5. 平面圖之尺規所列數字為以毫米標示之建築結構尺寸。

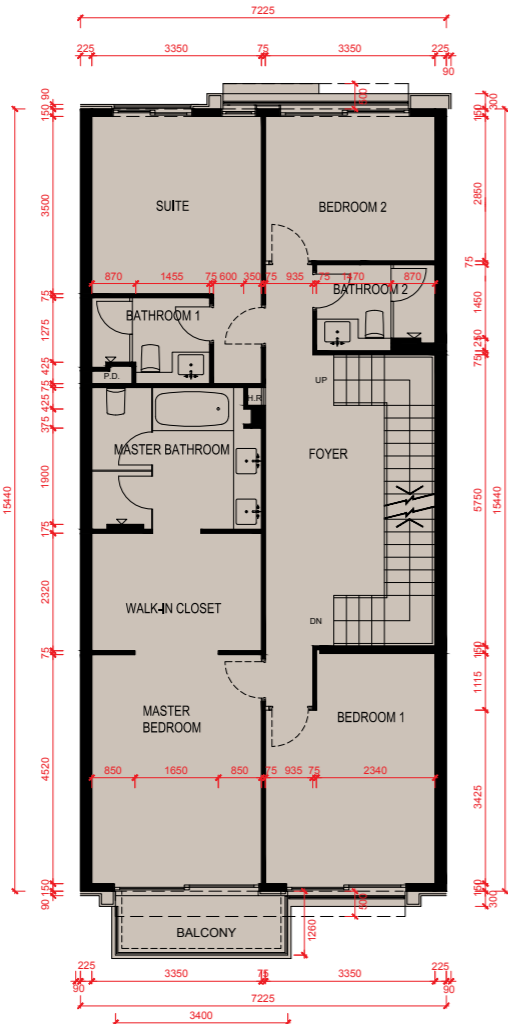
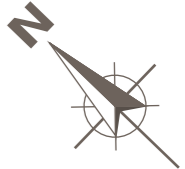


0M/米  
Scale:  
比例 5M/米

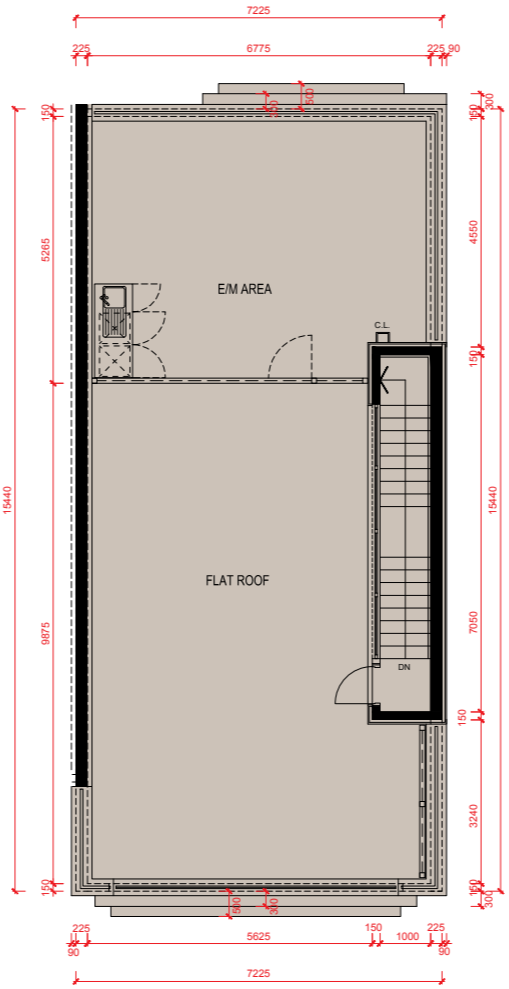


# Floor Plans of Residential Properties in the Development 發展項目的住宅物業的樓面平面圖

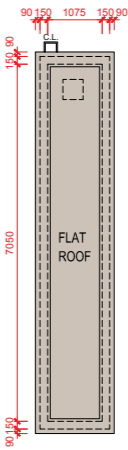
59 Lai Ping Road  
麗坪路59號



First Floor Plan  
1樓平面圖



Roof Plan  
天台平面圖



Top Roof Plan  
頂層天台平面圖

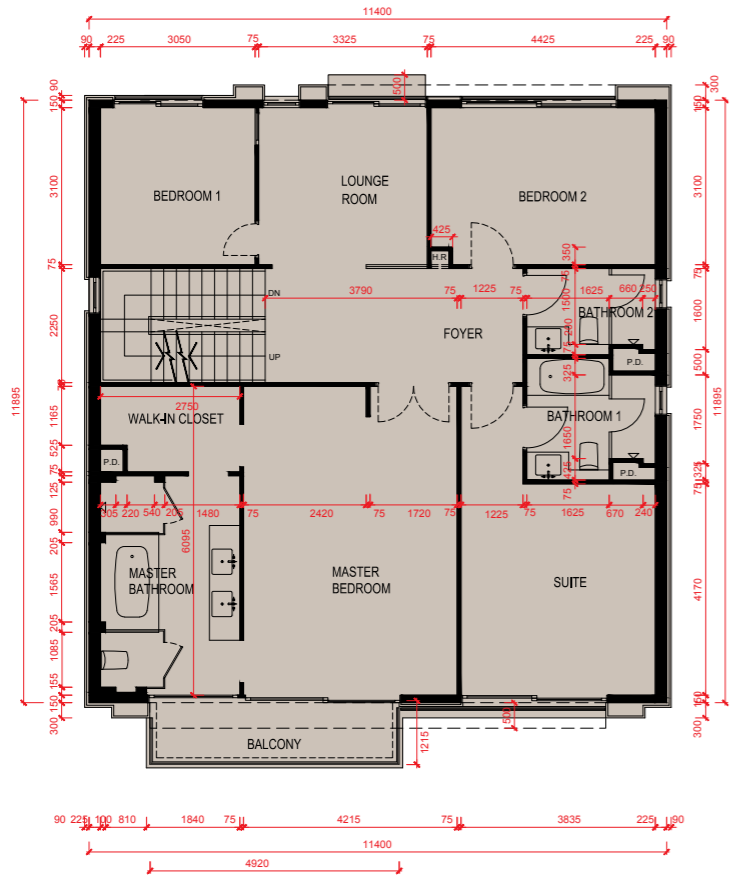
0M/米  
Scale:  
比例



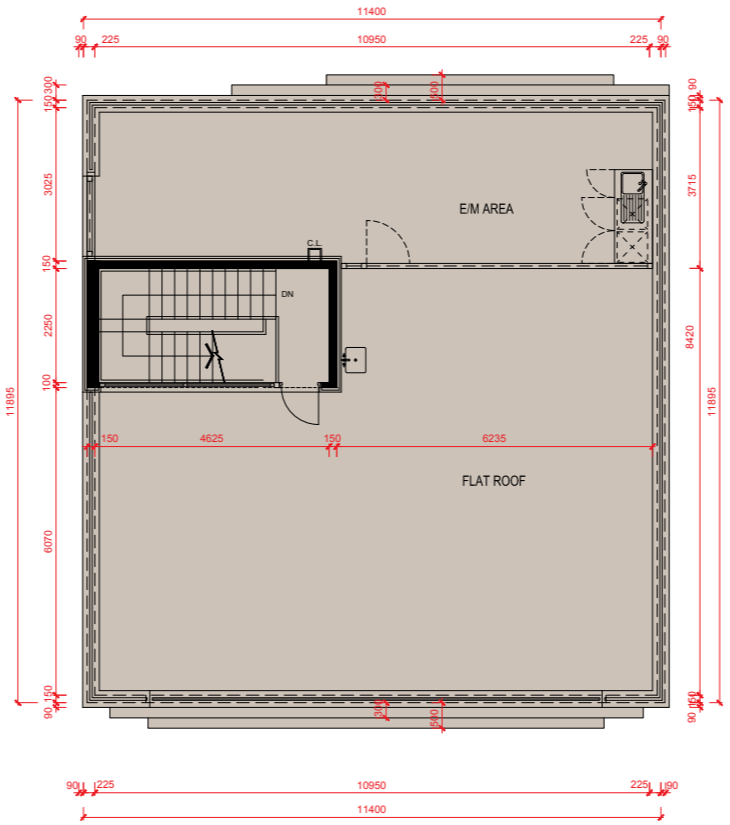
# Floor Plans of Residential Properties in the Development

## 發展項目的住宅物業的樓面平面圖

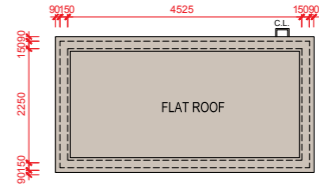
61 Lai Ping Road  
麗坪路61號



First Floor Plan  
1樓平面圖



Roof Plan  
天台平面圖

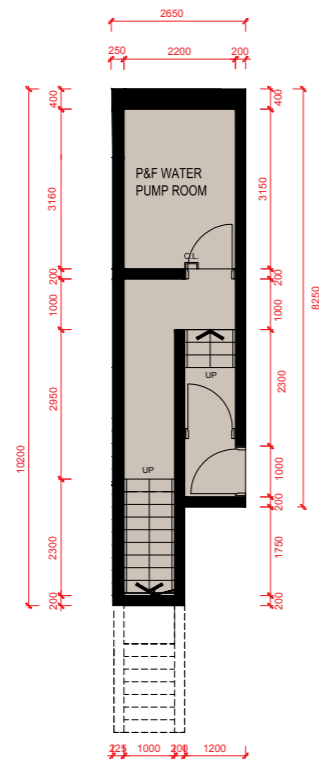


Top Roof Plan  
頂層天台平面圖

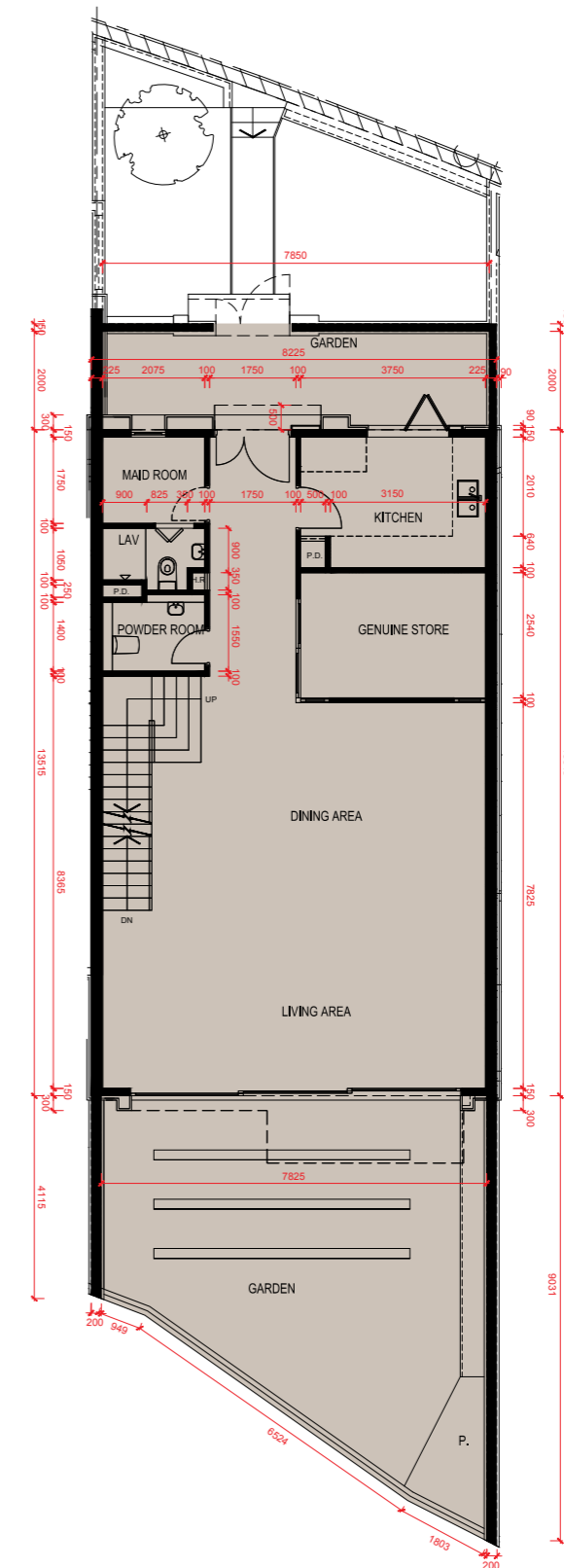
0M/米      5M/米  
Scale:      比例

# Floor Plans of Residential Properties in the Development 發展項目的住宅物業的樓面平面圖

**63 Lai Ping Road**  
麗坪路63號



Carpark Floor Plan  
停車場平面圖



Ground Floor Plan  
地下平面圖

1. The floor-to-floor height of 63 Lai Ping Road: 3700mm for Carpark Floor, 4250mm for G/F and 3500mm for 1/F.
2. The thickness of the floor slabs (excluding plaster) of 63 Lai Ping Road: 150mm, 175mm, 200mm, 250mm and 300mm.
3. The internal areas of the residential properties on the upper floors will generally be slightly larger than those on the lower floors because of the reducing thickness of the structural walls on the upper floors.
4. Please refer to page 17 of this sales brochure for remarks, legend of the terms and abbreviations shown in the floor plans.
5. The dimensions of floor plans are all structural dimensions in millimeter.

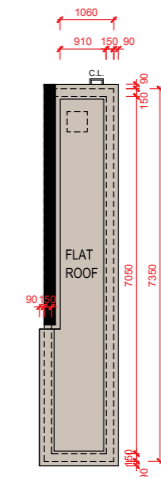
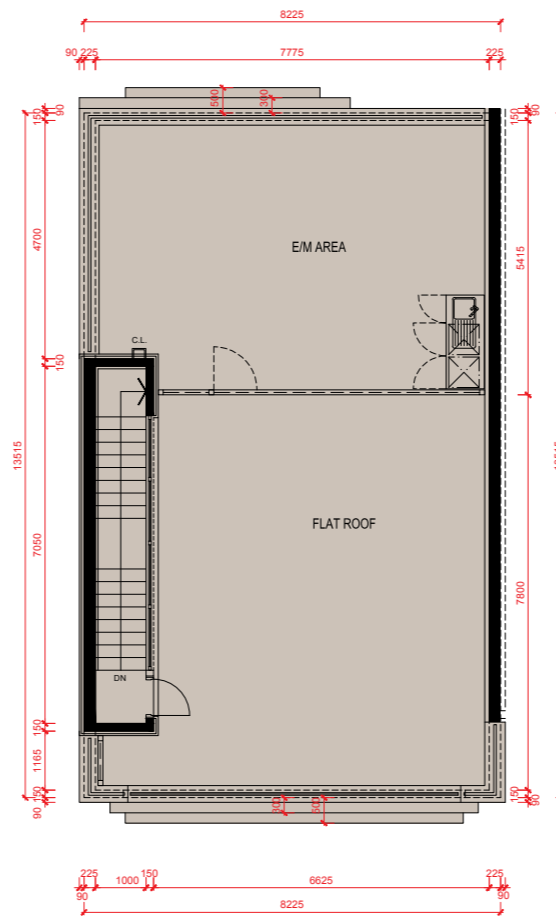
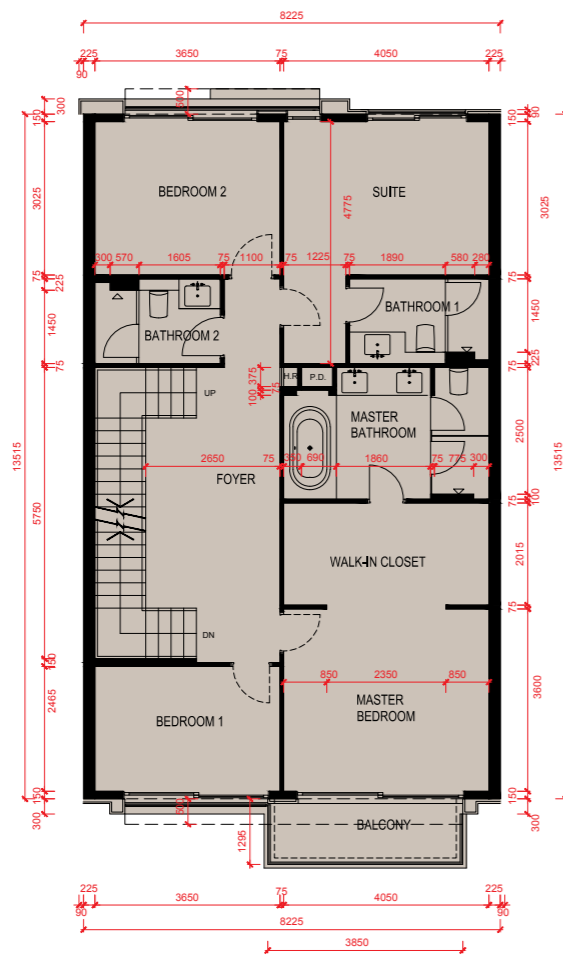
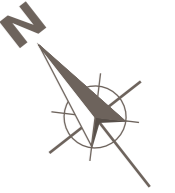
1. 麗坪路63號的層與層之間的高度：停車場為3700毫米、地下為4250毫米及1樓為3500毫米。
2. 麗坪路63號的樓板（不包括灰泥）的厚度：150毫米、175毫米、200毫米、250毫米及300毫米。
3. 因住宅物業的較高樓層的結構牆的厚度遞減，較高樓層的內部面積，一般比較低樓層的內部面積稍大。
4. 平面圖中顯示之附註、名詞及簡稱請參閱本售樓說明書第17頁。
5. 平面圖之尺規所列數字為以毫米標示之建築結構尺寸。

0M/米      5M/米  
Scale:      比例

# Floor Plans of Residential Properties in the Development

## 發展項目的住宅物業的樓面平面圖

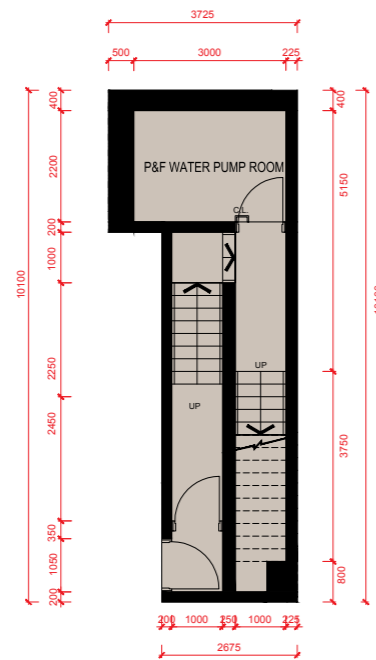
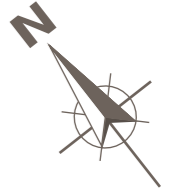
63 Lai Ping Road  
麗坪路63號



0M/米      5M/米  
Scale: 比例

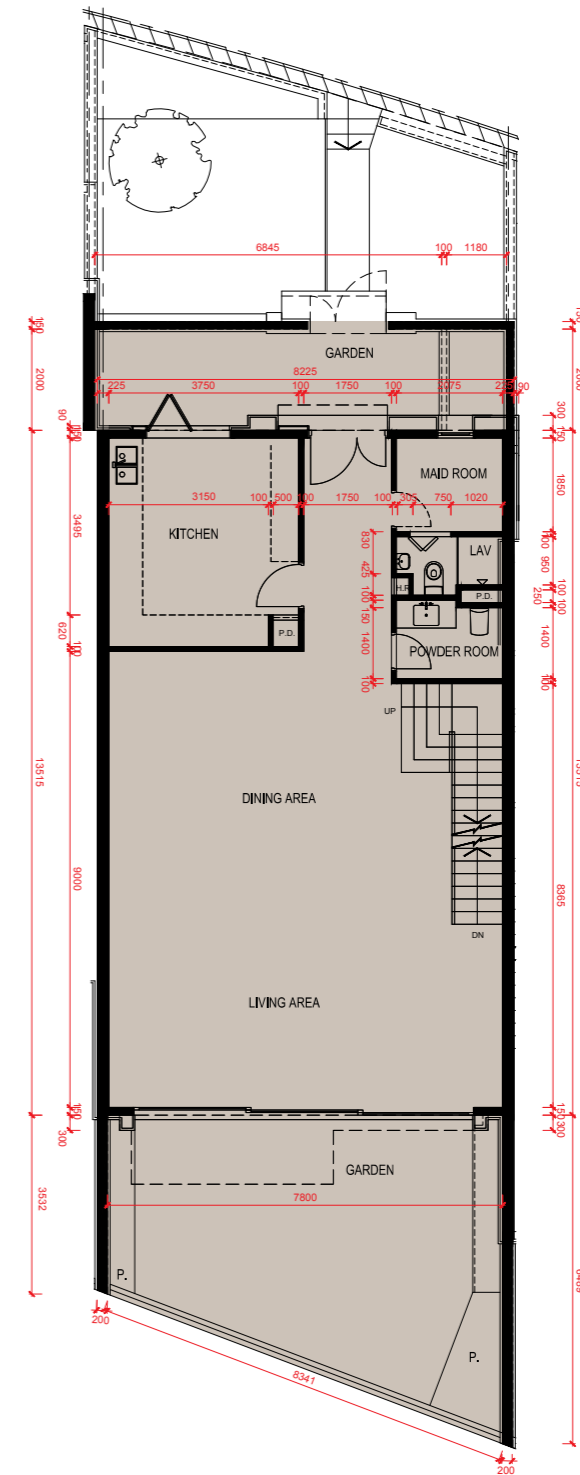
# Floor Plans of Residential Properties in the Development 發展項目的住宅物業的樓面平面圖

**65 Lai Ping Road**  
麗坪路65號



**Carpark Floor Plan**  
停車場平面圖

**Ground Floor Plan**  
地下平面圖



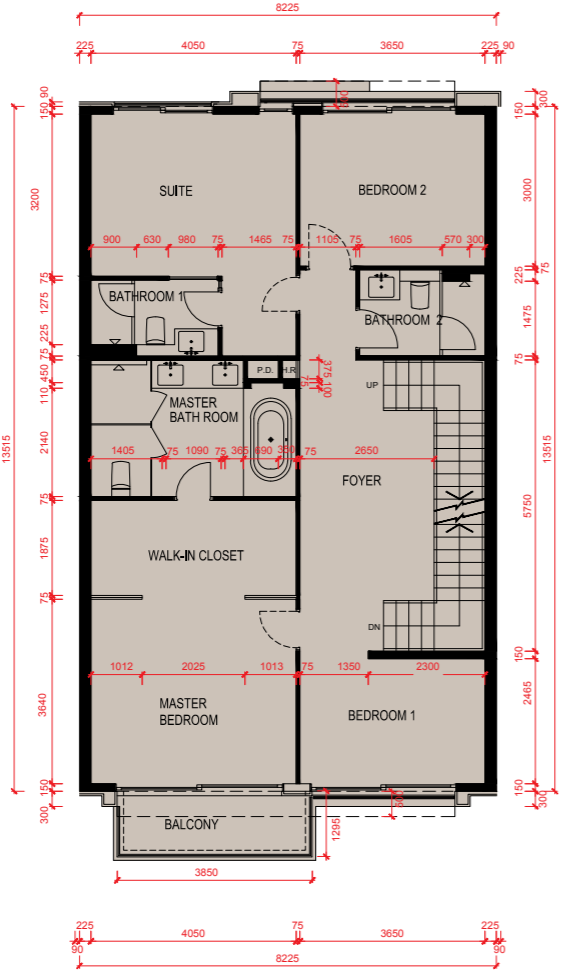
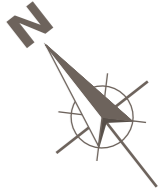
1. The floor-to-floor height of 65 Lai Ping Road: 4500mm for Carpark Floor, 4250mm for G/F and 3500mm for 1/F.
2. The thickness of the floor slabs (excluding plaster) of 65 Lai Ping Road: 150mm, 175mm, 200mm, 250mm and 300mm.
3. The internal areas of the residential properties on the upper floors will generally be slightly larger than those on the lower floors because of the reducing thickness of the structural walls on the upper floors.
4. Please refer to page 17 of this sales brochure for remarks, legend of the terms and abbreviations shown in the floor plans.
5. The dimensions of floor plans are all structural dimensions in millimeter.

1. 麗坪路65號的層與層之間的高度：停車場為4500毫米、地下為4250毫米及1樓為3500毫米。
2. 麗坪路65號的樓板（不包括灰泥）的厚度：150毫米、175毫米、200毫米、250毫米及300毫米。
3. 因住宅物業的較高樓層的結構牆的厚度遞減，較高樓層的內部面積，一般比較低樓層的內部面積稍大。
4. 平面圖中顯示之附註、名詞及簡稱請參閱本售樓說明書第17頁。
5. 平面圖之尺規所列數字為以毫米標示之建築結構尺寸。

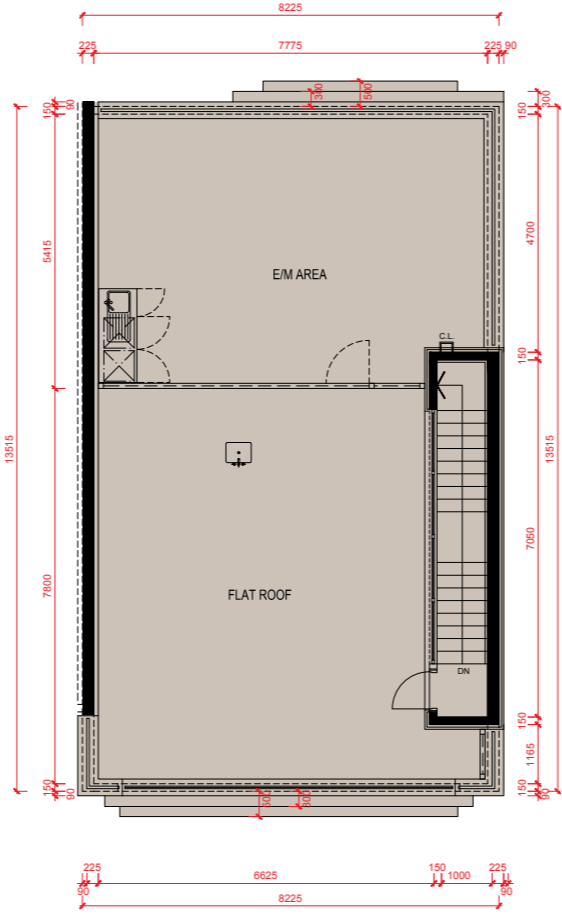
0M/米      5M/米  
Scale:      比例

# Floor Plans of Residential Properties in the Development 發展項目的住宅物業的樓面平面圖

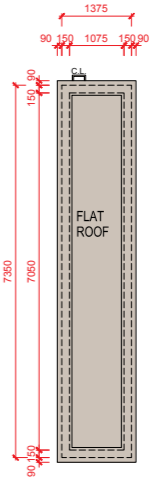
65 Lai Ping Road  
麗坪路65號



First Floor Plan  
1樓平面圖



Roof Plan  
天台平面圖



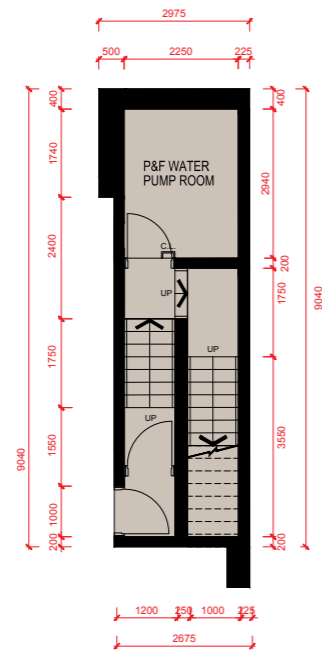
Top Roof Plan  
頂層天台平面圖

0M/米      5M/米  
Scale:      比例

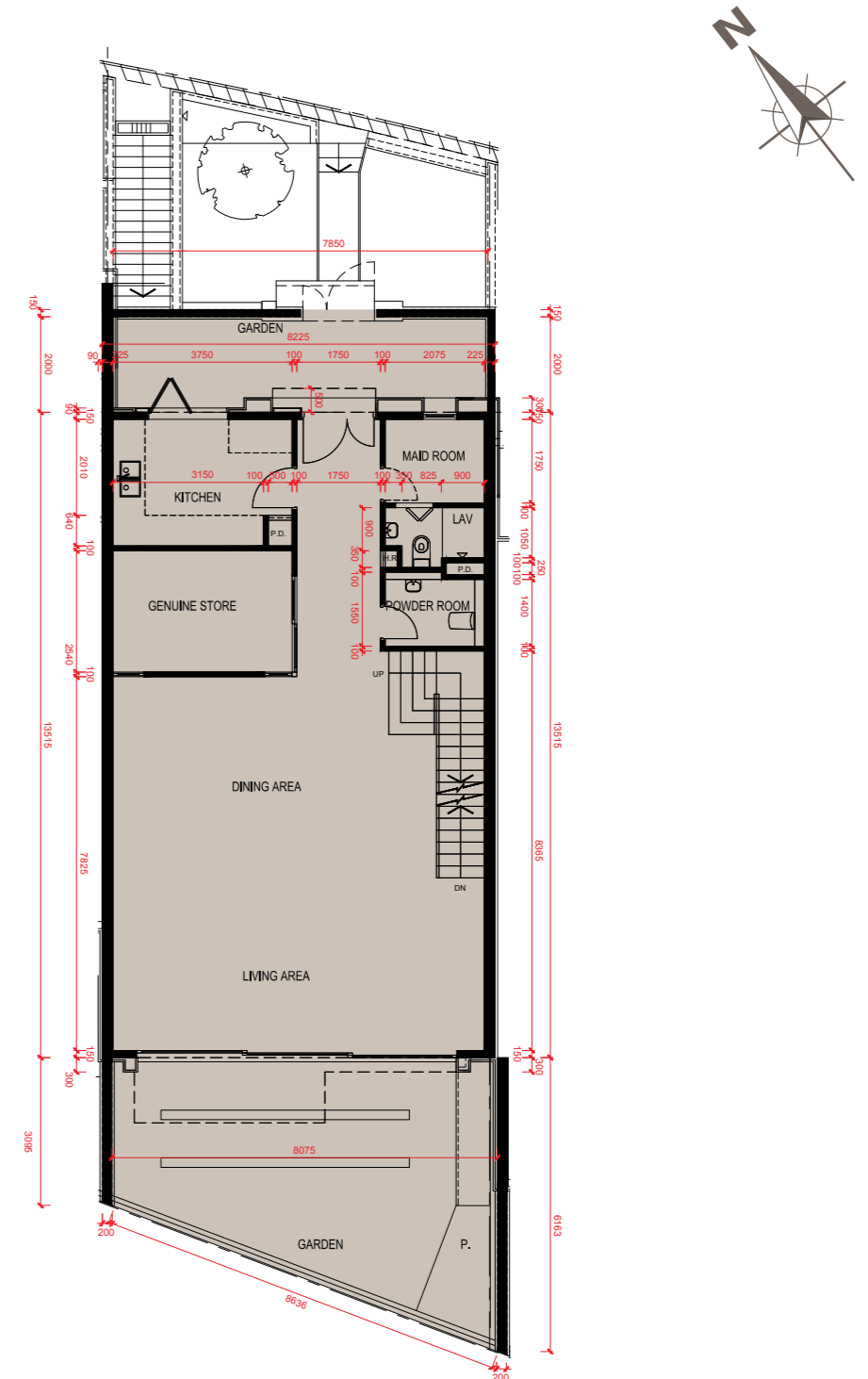
# Floor Plans of Residential Properties in the Development 發展項目的住宅物業的樓面平面圖

67 Lai Ping Road

麗坪路67號



Carpark Floor Plan  
停車場平面圖



Ground Floor Plan  
地下平面圖

1. The floor-to-floor height of 67 Lai Ping Road: 4200mm for Carpark Floor, 4250mm for G/F and 3500mm for 1/F.
2. The thickness of the floor slabs (excluding plaster) of 67 Lai Ping Road: 150mm, 175mm, 200mm, 250mm and 300mm.
3. The internal areas of the residential properties on the upper floors will generally be slightly larger than those on the lower floors because of the reducing thickness of the structural walls on the upper floors.
4. Please refer to page 17 of this sales brochure for remarks, legend of the terms and abbreviations shown in the floor plans.
5. The dimensions of floor plans are all structural dimensions in millimeter.

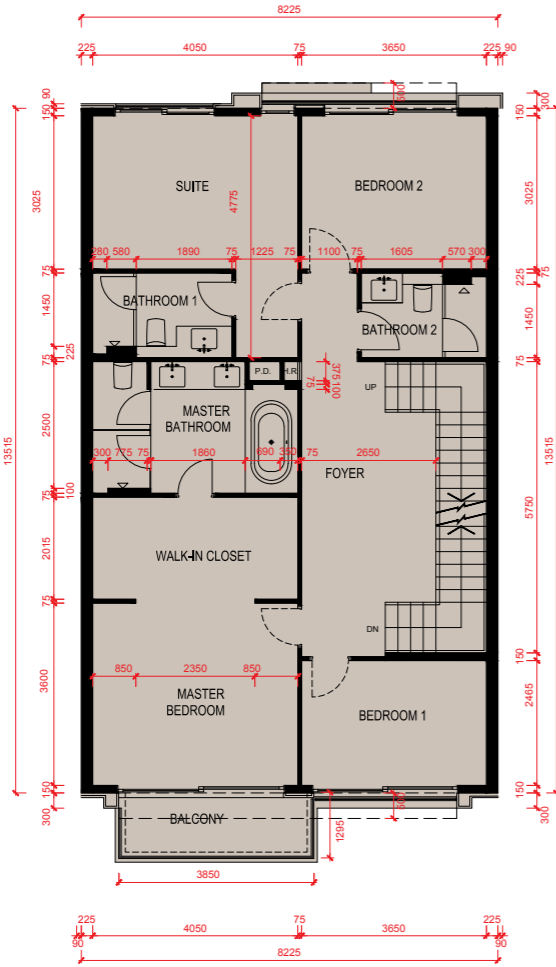
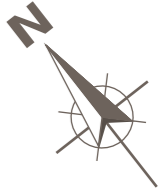
1. 麗坪路67號的層與層之間的高度：停車場為4200毫米、地下為4250毫米及1樓為3500毫米。
2. 麗坪路67號的樓板（不包括灰泥）的厚度：150毫米、175毫米、200毫米、250毫米及300毫米。
3. 因住宅物業的較高樓層的結構牆的厚度遞減，較高樓層的內部面積，一般比較低樓層的內部面積稍大。
4. 平面圖中顯示之附註、名詞及簡稱請參閱本售樓說明書第17頁。
5. 平面圖之尺規所列數字為以毫米標示之建築結構尺寸。

0M/米      5M/米  
Scale:      比例

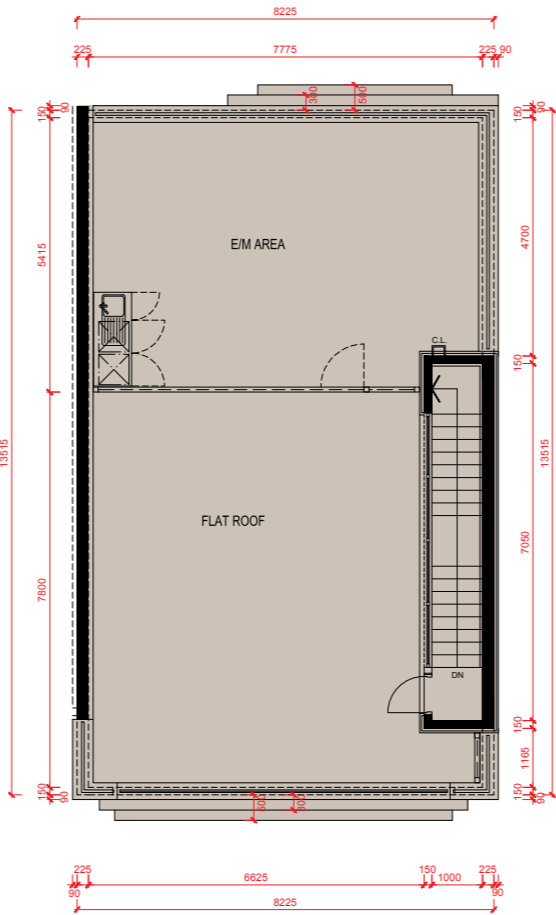


# Floor Plans of Residential Properties in the Development 發展項目的住宅物業的樓面平面圖

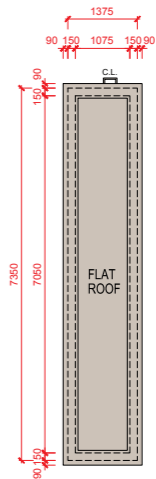
67 Lai Ping Road  
麗坪路67號



First Floor Plan  
1樓平面圖



Roof Plan  
天台平面圖

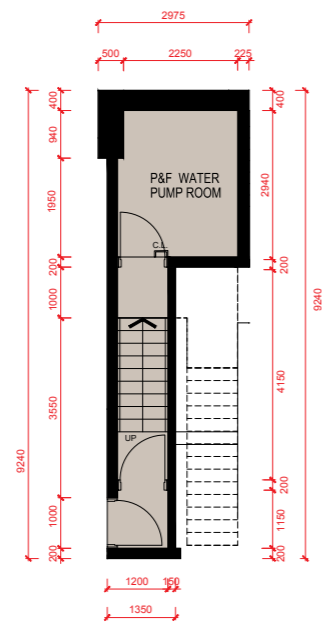
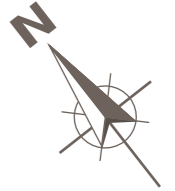


Top Roof Plan  
頂層天台平面圖

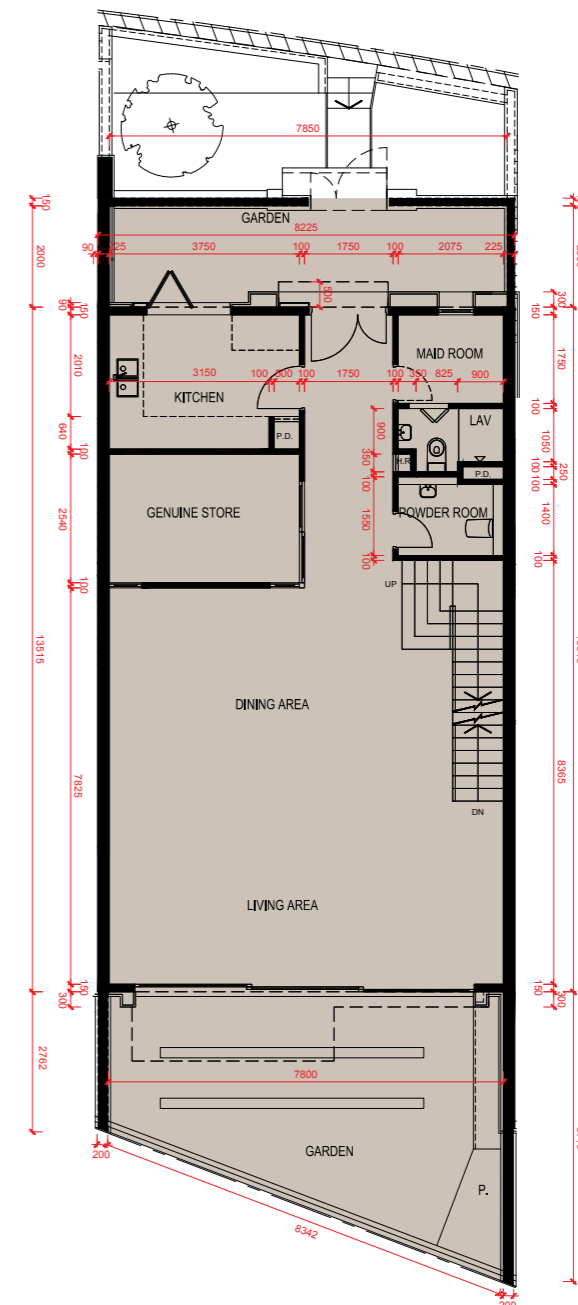
0M/米      5M/米  
Scale:      比例

# Floor Plans of Residential Properties in the Development 發展項目的住宅物業的樓面平面圖

**69 Lai Ping Road**  
麗坪路69號



Carpark Floor Plan  
停車場平面圖



Ground Floor Plan  
地下平面圖

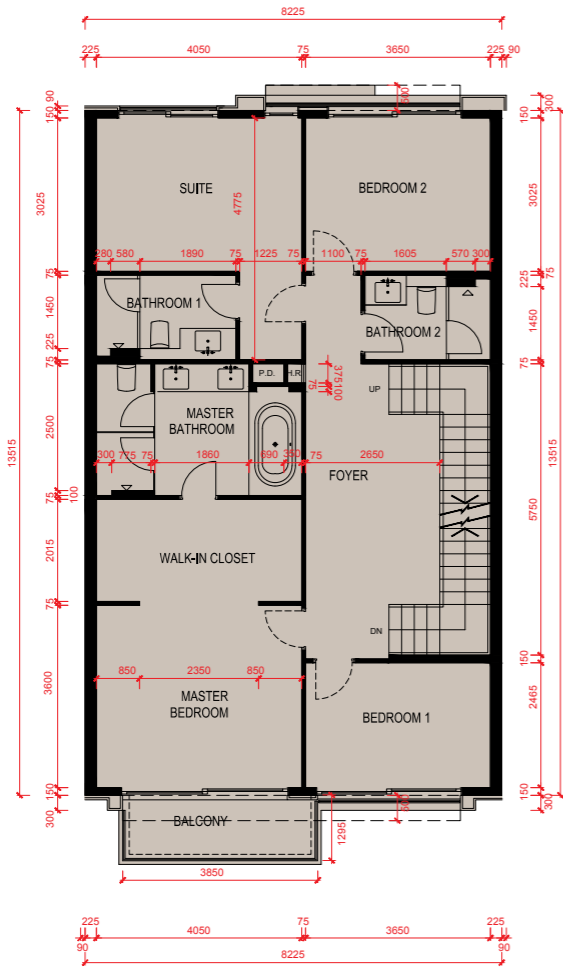
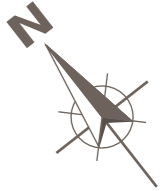
1. The floor-to-floor height of 69 Lai Ping Road: 4100mm for Carpark Floor, 4250mm for G/F and 3500mm for 1/F.
2. The thickness of the floor slabs (excluding plaster) of 69 Lai Ping Road: 150mm, 175mm, 200mm, 250mm and 300mm.
3. The internal areas of the residential properties on the upper floors will generally be slightly larger than those on the lower floors because of the reducing thickness of the structural walls on the upper floors.
4. Please refer to page 17 of this sales brochure for remarks, legend of the terms and abbreviations shown in the floor plans.
5. The dimensions of floor plans are all structural dimensions in millimeter.

1. 麗坪路69號的層與層之間的高度：停車場為4100毫米、地下為4250毫米及1樓為3500毫米。
2. 麗坪路69號的樓板（不包括灰泥）的厚度：150毫米、175毫米、200毫米、250毫米及300毫米。
3. 因住宅物業的較高樓層的結構牆的厚度遞減，較高樓層的內部面積，一般比較低樓層的內部面積稍大。
4. 平面圖中顯示之附註、名詞及簡稱請參閱本售樓說明書第17頁。
5. 平面圖之尺規所列數字為以毫米標示之建築結構尺寸。

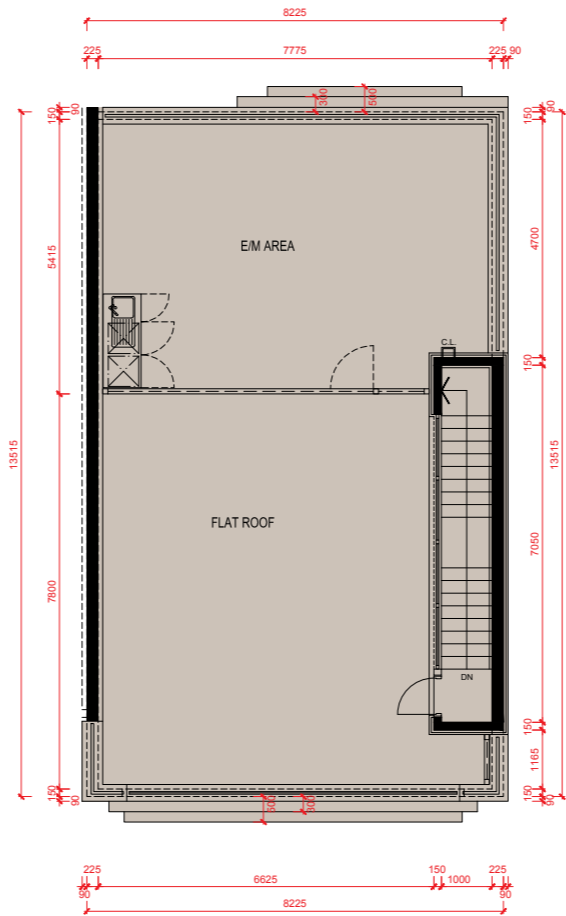


# Floor Plans of Residential Properties in the Development 發展項目的住宅物業的樓面平面圖

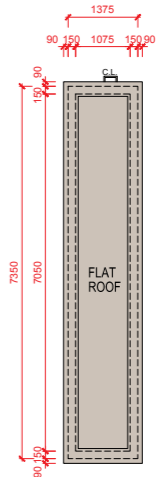
69 Lai Ping Road  
麗坪路69號



First Floor Plan  
1樓平面圖



Roof Plan  
天台平面圖

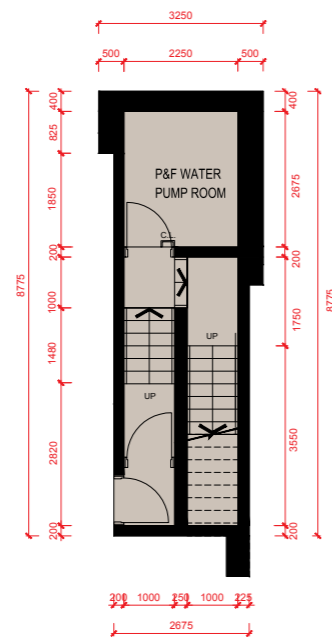


Top Roof Plan  
頂層天台平面圖

0M/米      5M/米  
Scale:      比例

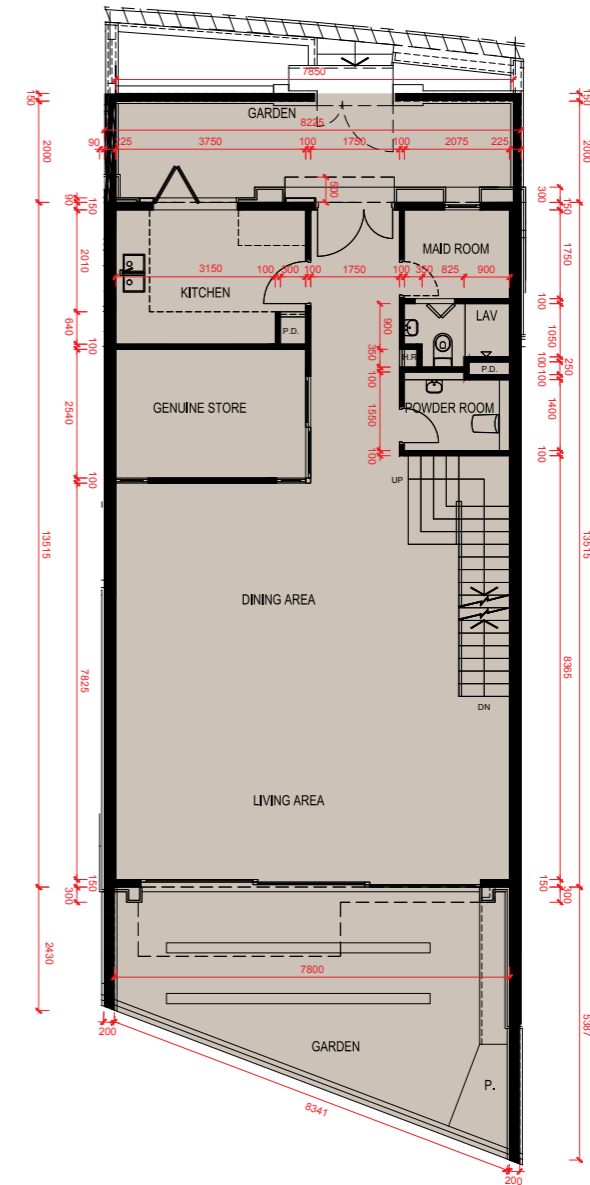
# Floor Plans of Residential Properties in the Development 發展項目的住宅物業的樓面平面圖

**71 Lai Ping Road**  
麗坪路71號



Carpark Floor Plan  
停車場平面圖

Ground Floor Plan  
地下平面圖



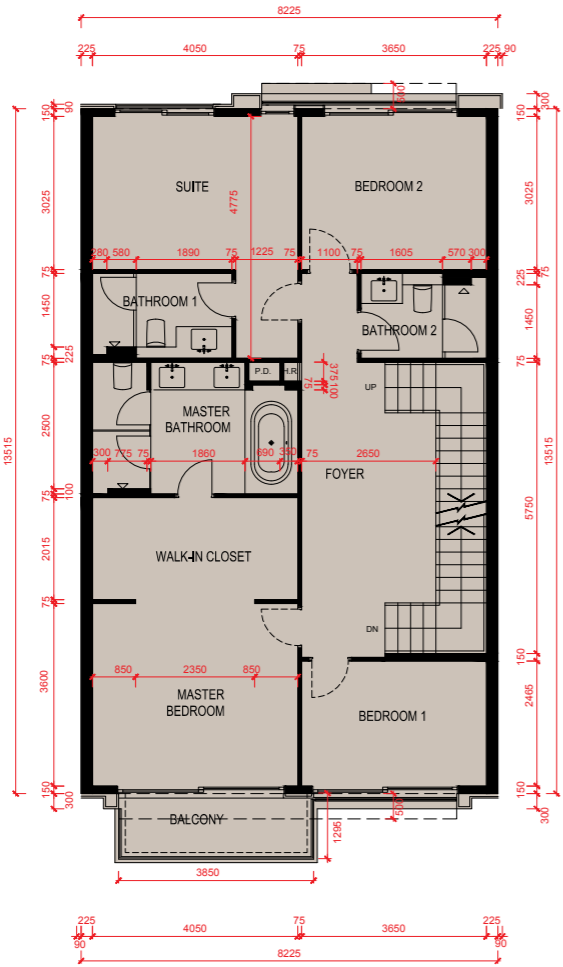
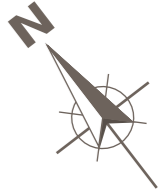
1. The floor-to-floor height of 71 Lai Ping Road: 4100mm for Carpark Floor, 4250mm for G/F and 3500mm for 1/F.
2. The thickness of the floor slabs (excluding plaster) of 71 Lai Ping Road: 150mm, 175mm, 200mm, 250mm and 300mm.
3. The internal areas of the residential properties on the upper floors will generally be slightly larger than those on the lower floors because of the reducing thickness of the structural walls on the upper floors.
4. Please refer to page 17 of this sales brochure for remarks, legend of the terms and abbreviations shown in the floor plans.
5. The dimensions of floor plans are all structural dimensions in millimeter.

1. 麗坪路71號的層與層之間的高度：停車場為4100毫米、地下為4250毫米及1樓為3500毫米。
2. 麗坪路71號的樓板（不包括灰泥）的厚度：150毫米、175毫米、200毫米、250毫米及300毫米。
3. 因住宅物業的較高樓層的結構牆的厚度遞減，較高樓層的內部面積，一般比較低樓層的內部面積稍大。
4. 平面圖中顯示之附註、名詞及簡稱請參閱本售樓說明書第17頁。
5. 平面圖之尺規所列數字為以毫米標示之建築結構尺寸。

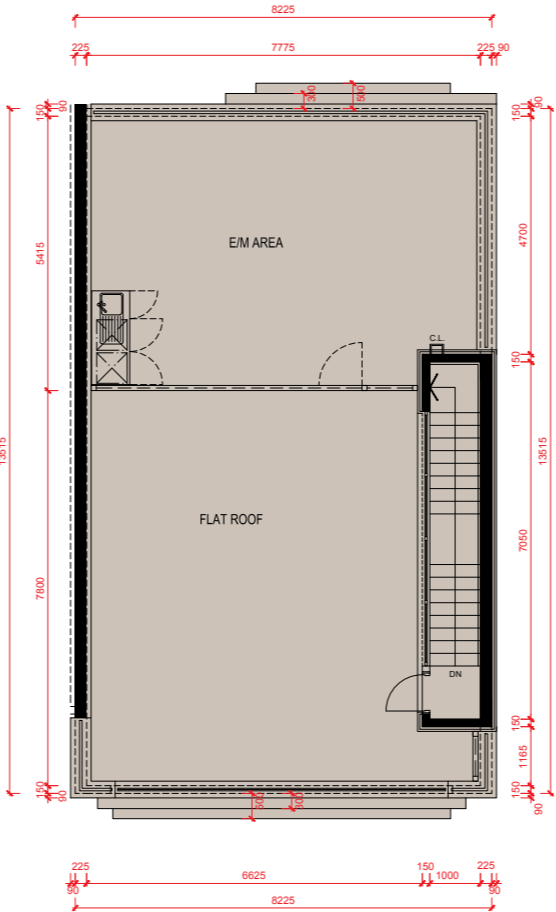
0M/米      5M/米  
Scale:  
比例

# Floor Plans of Residential Properties in the Development 發展項目的住宅物業的樓面平面圖

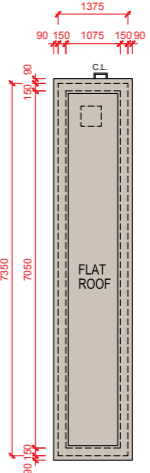
71 Lai Ping Road  
麗坪路71號



First Floor Plan  
1樓平面圖



Roof Plan  
天台平面圖



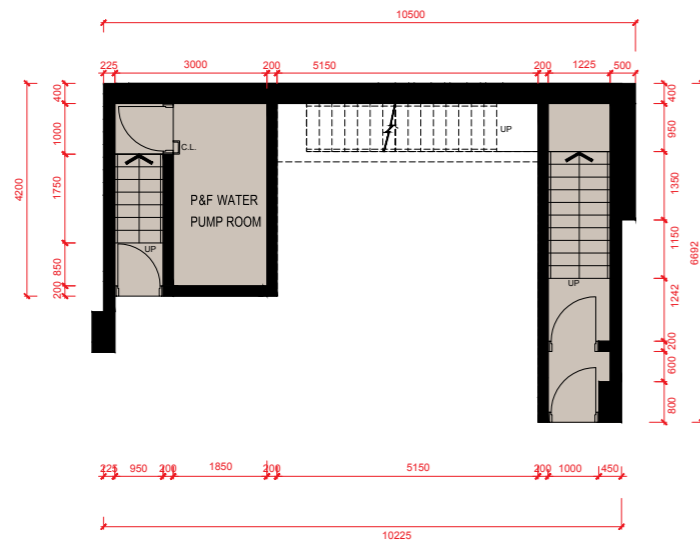
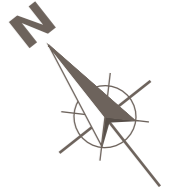
Top Roof Plan  
頂層天台平面圖

0M/米      5M/米  
Scale:      比例

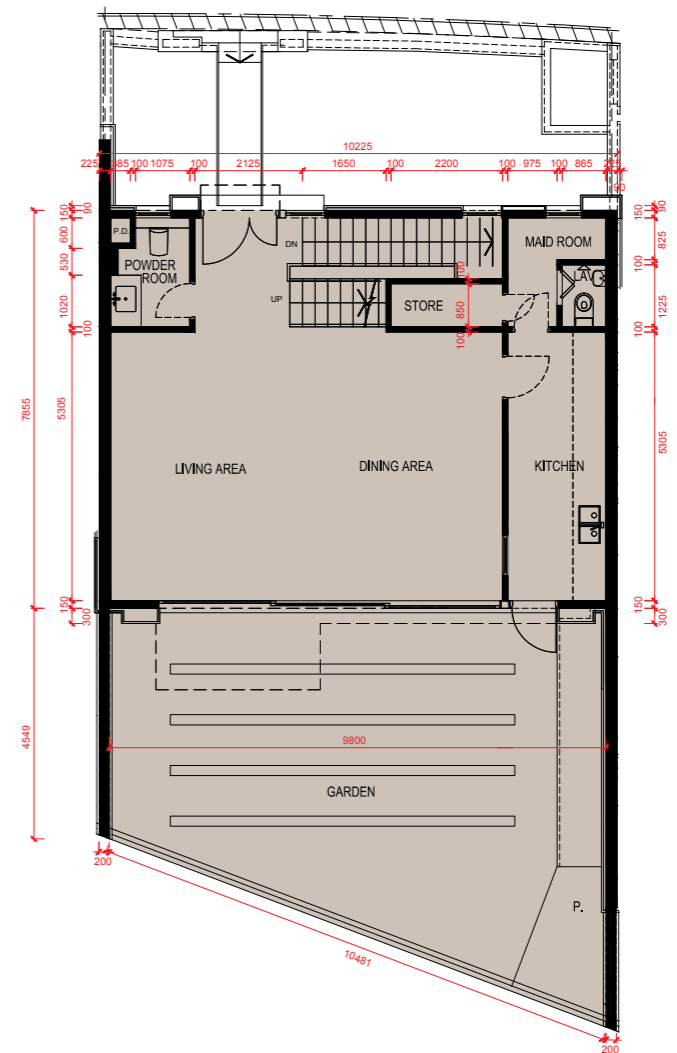
# Floor Plans of Residential Properties in the Development 發展項目的住宅物業的樓面平面圖

## 73 Lai Ping Road

麗坪路73號



Carpark Floor Plan  
停車場平面圖



Ground Floor Plan  
地下平面圖

1. The floor-to-floor height of 73 Lai Ping Road: 4400mm for Carpark Floor, 4250mm for G/F and 3500mm for 1/F.
2. The thickness of the floor slabs (excluding plaster) of 73 Lai Ping Road: 150mm, 175mm, 200mm and 250mm.
3. The internal areas of the residential properties on the upper floors will generally be slightly larger than those on the lower floors because of the reducing thickness of the structural walls on the upper floors.
4. Please refer to page 17 of this sales brochure for remarks, legend of the terms and abbreviations shown in the floor plans.
5. The dimensions of floor plans are all structural dimensions in millimeter.

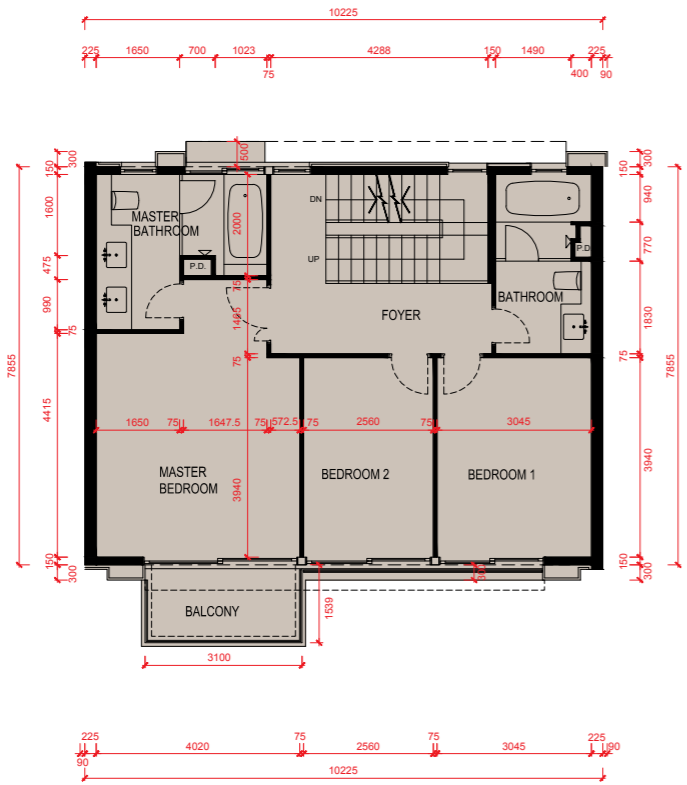
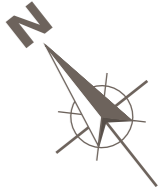
1. 麗坪路73號的層與層之間的高度：停車場為4400毫米、地下為4250毫米及1樓為3500毫米。
2. 麗坪路73號的樓板（不包括灰泥）的厚度：150毫米、175毫米、200毫米及250毫米。
3. 因住宅物業的較高樓層的結構牆的厚度遞減，較高樓層的內部面積，一般比較低樓層的內部面積稍大。
4. 平面圖中顯示之附註、名詞及簡稱請參閱本售樓說明書第17頁。
5. 平面圖之尺規所列數字為以毫米標示之建築結構尺寸。

0M/米      5M/米  
Scale:      比例

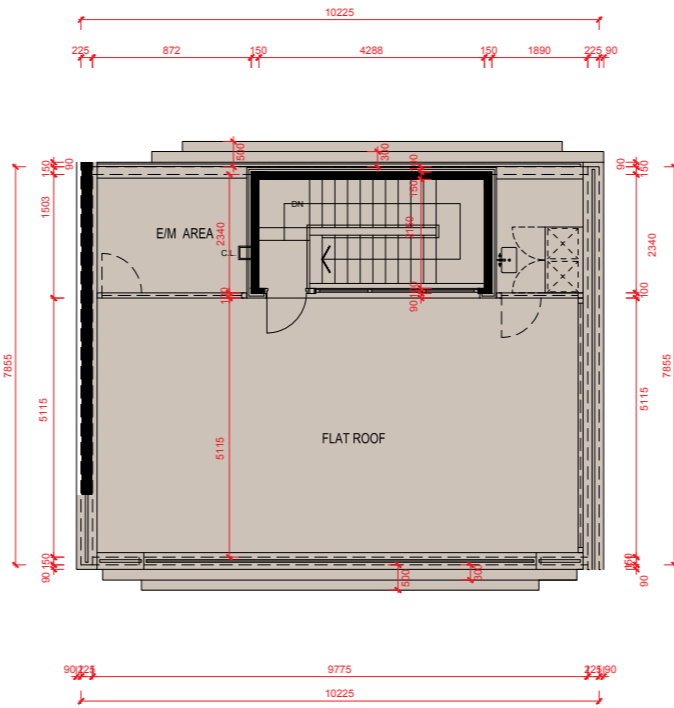
# Floor Plans of Residential Properties in the Development

## 發展項目的住宅物業的樓面平面圖

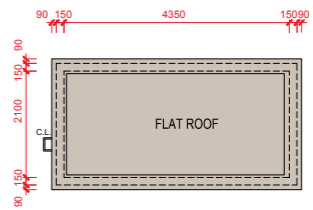
73 Lai Ping Road  
麗坪路73號



First Floor Plan  
1樓平面圖



Roof Plan  
天台平面圖



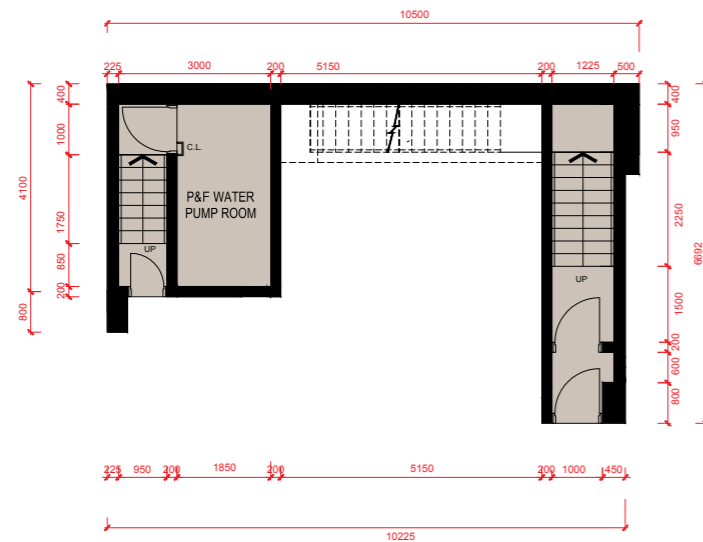
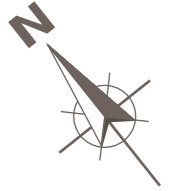
Top Roof Plan  
頂層天台平面圖

0M/米      5M/米  
Scale:      比例

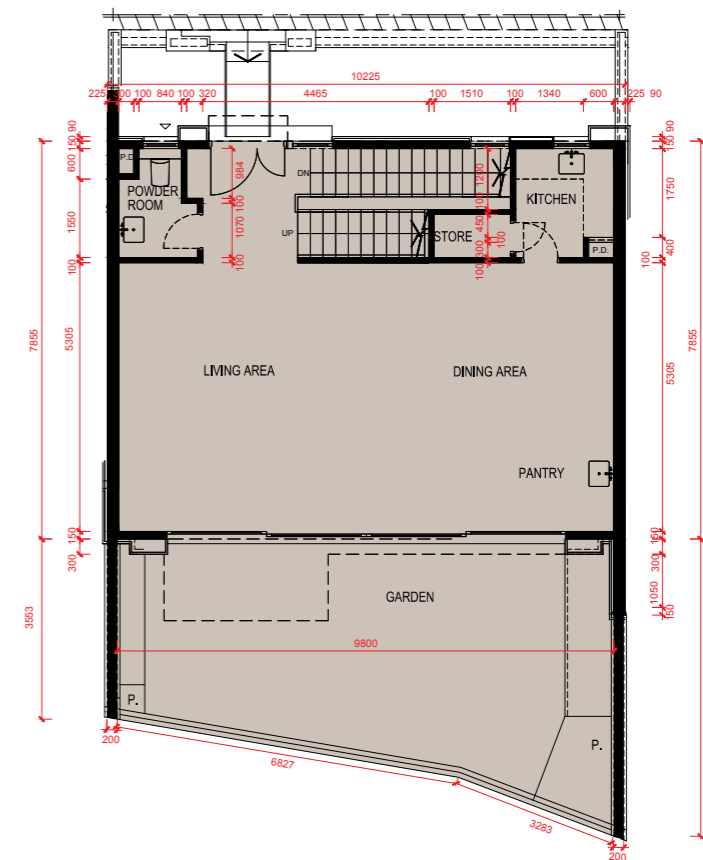
# Floor Plans of Residential Properties in the Development 發展項目的住宅物業的樓面平面圖

## 75 Lai Ping Road

麗坪路75號



Carpark Floor Plan  
停車場平面圖



Ground Floor Plan  
地下平面圖

1. The floor-to-floor height of 75 Lai Ping Road: 4250mm for Carpark Floor, 4250mm for G/F and 3500mm for 1/F.
2. The thickness of the floor slabs (excluding plaster) of 75 Lai Ping Road: 150mm, 175mm, 200mm and 250mm.
3. The internal areas of the residential properties on the upper floors will generally be slightly larger than those on the lower floors because of the reducing thickness of the structural walls on the upper floors.
4. Please refer to page 17 of this sales brochure for remarks, legend of the terms and abbreviations shown in the floor plans.
5. The dimensions of floor plans are all structural dimensions in millimeter.

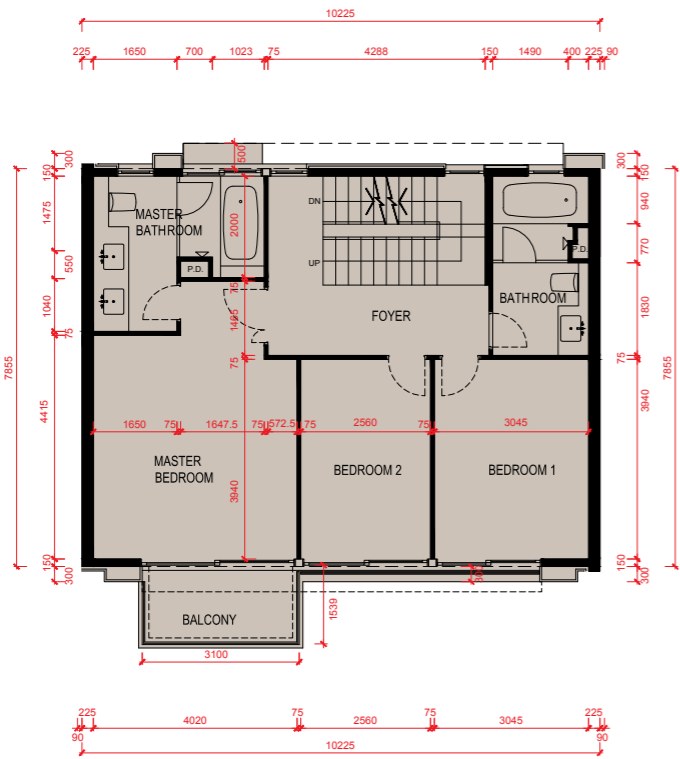
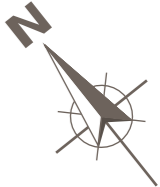
1. 麗坪路75號的層與層之間的高度：停車場為4250毫米、地下為4250毫米及1樓為3500毫米。
2. 麗坪路75號的樓板（不包括灰泥）的厚度：150毫米、175毫米、200毫米及250毫米。
3. 因住宅物業的較高樓層的結構牆的厚度遞減，較高樓層的內部面積，一般比較低樓層的內部面積稍大。
4. 平面圖中顯示之附註、名詞及簡稱請參閱本售樓說明書第17頁。
5. 平面圖之尺規所列數字為以毫米標示之建築結構尺寸。

0M/米      5M/米  
Scale:      比例

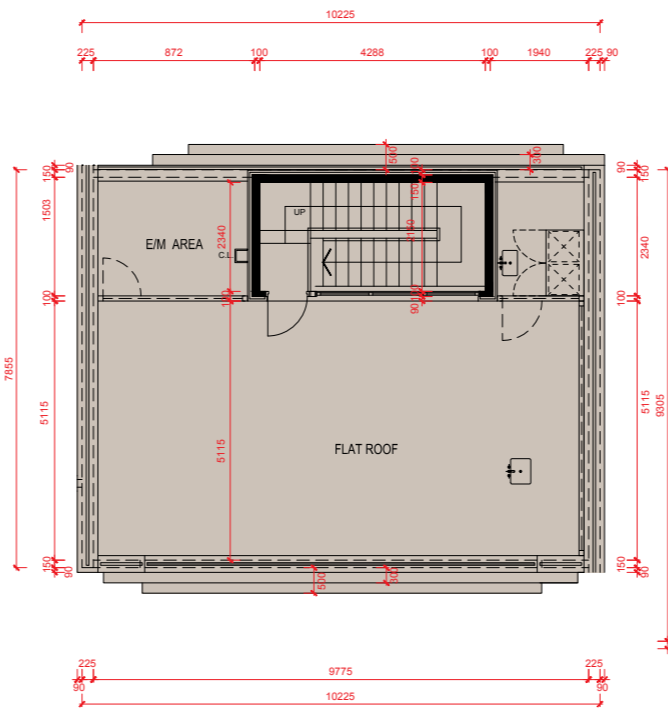


# Floor Plans of Residential Properties in the Development 發展項目的住宅物業的樓面平面圖

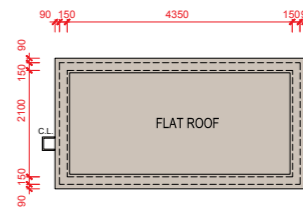
75 Lai Ping Road  
麗坪路75號



First Floor Plan  
1樓平面圖



Roof Plan  
天台平面圖



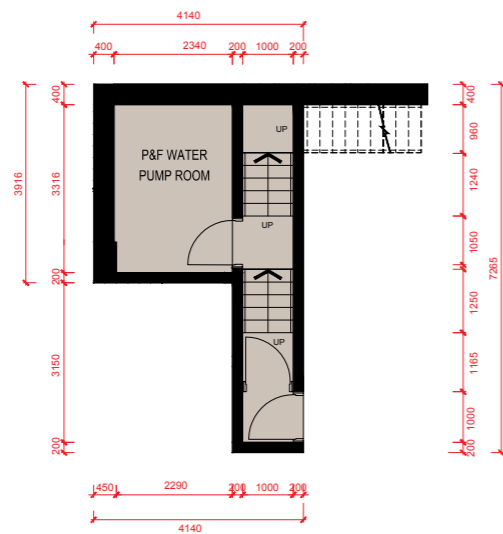
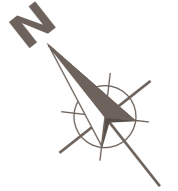
Top Roof Plan  
頂層天台平面圖

0M/米      5M/米  
Scale:      比例

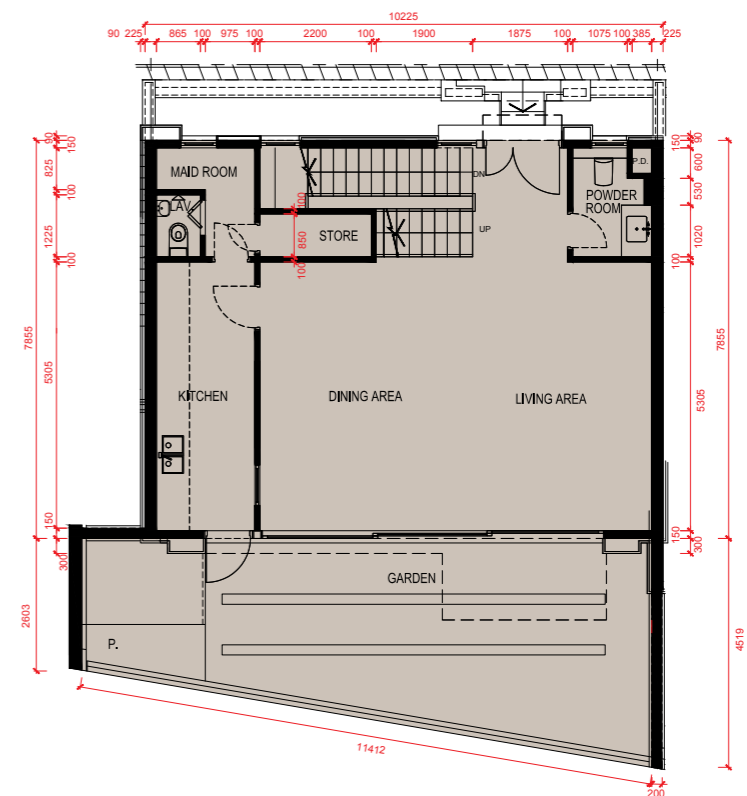
# Floor Plans of Residential Properties in the Development 發展項目的住宅物業的樓面平面圖

## 77 Lai Ping Road

麗坪路77號



Carpark Floor Plan  
停車場平面圖



Ground Floor Plan  
地下平面圖

1. The floor-to-floor height of 77 Lai Ping Road: 3750mm for Carpark Floor, 4250mm for G/F and 3500mm for 1/F.
2. The thickness of the floor slabs (excluding plaster) of 77 Lai Ping Road: 150mm, 175mm, 200mm and 250mm.
3. The internal areas of the residential properties on the upper floors will generally be slightly larger than those on the lower floors because of the reducing thickness of the structural walls on the upper floors.
4. Please refer to page 17 of this sales brochure for remarks, legend of the terms and abbreviations shown in the floor plans.
5. The dimensions of floor plans are all structural dimensions in millimeter.

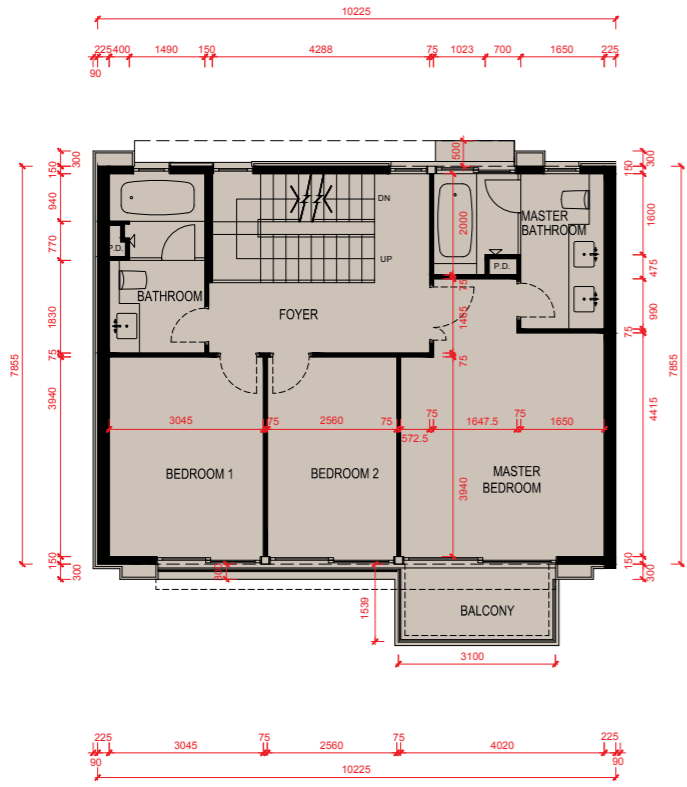
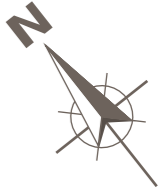
1. 麗坪路77號的層與層之間的高度：停車場為3750毫米、地下為4250毫米及1樓為3500毫米。
2. 麗坪路77號的樓板（不包括灰泥）的厚度：150毫米、175毫米、200毫米及250毫米。
3. 因住宅物業的較高樓層的結構牆的厚度遞減，較高樓層的內部面積，一般比較低樓層的內部面積稍大。
4. 平面圖中顯示之附註、名詞及簡稱請參閱本售樓說明書第17頁。
5. 平面圖之尺規所列數字為以毫米標示之建築結構尺寸。

0M/米      5M/米  
Scale: 比例

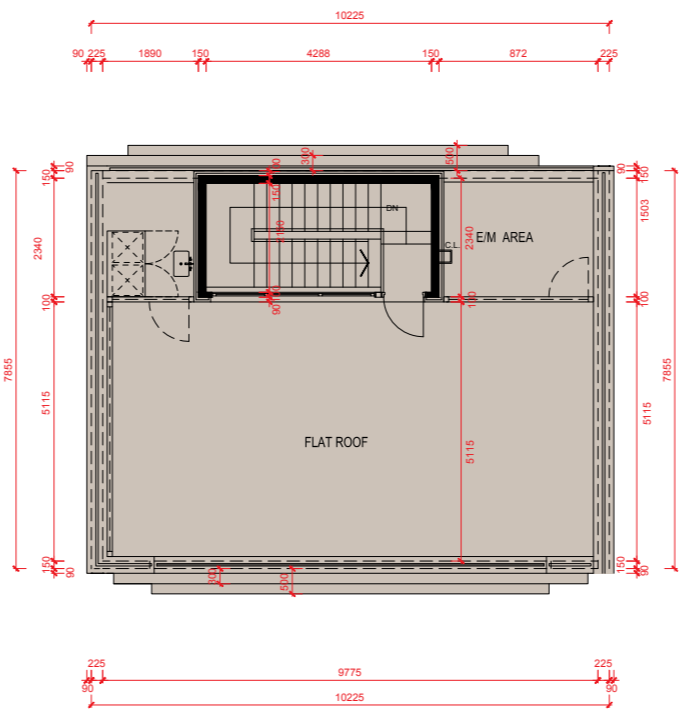
# Floor Plans of Residential Properties in the Development

## 發展項目的住宅物業的樓面平面圖

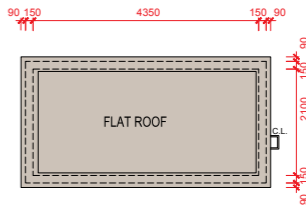
77 Lai Ping Road  
麗坪路77號



First Floor Plan  
1樓平面圖



Roof Plan  
天台平面圖



Top Roof Plan  
頂層天台平面圖

0M/米      5M/米  
Scale:      比例