

FLOOR PLANS OF RESIDENTIAL PROPERTIES IN THE DEVELOPMENT

發展項目的住宅物業的平面圖

GLOSSARY 詞彙表

ARCH. FEATURE = Architectural Feature 外牆裝飾

A/C PLATFORM = Air-Conditioner Platform 空調機平台

BAL. = Balcony 露台

BATH = Bathroom 浴室

BR. = Bedroom 睡房

C.D. = Cable Duct 電纜槽

DIN. = Dining Room 飯廳

DN = Down 往下

EXIT CORRIDOR = 出口走廊

EXIT CORRIDOR (COMMON AREA) = 出口走廊 (公共地方)

E.M.C. = Electrical Meter Cabinet 電錶櫃

E.M.R. = Electrical Meter Room 電錶房

FAD = Fresh Air Duct 鮮風管

FLAT ROOF = 平台

F.H. = Fire Hydrant 消防栓

H.R. = Hose Reel 消防喉轆

INACCESSIBLE FLAT ROOF = 無法進入的平台

JACUZZI = 按摩池

KIT. = Kitchen 廚房

LAV. = Lavatory 洗手間

LIFT = 電梯

LIFT LOBBY = 電梯大堂

LIFT MACHINE ROOM = 電梯機房

LIV. = Living Room 客廳

M.BATH = Master Bathroom 主人房浴室

M.B.R. = Master Bedroom 主人睡房

OPEN KITCHEN = 開放式廚房

PANTRY = 備餐間

P.D. = Pipe Duct 管道槽

PLANTER = 花槽

R.S. & M.R.R. = Refuse Storage and Material Recovery Room 垃圾及物料回收室

STORE = Store Room 儲物室

SWIMMING POOL = 游泳池

WIC = Walk-in Closet 衣帽間

W.M.C. = Water Meter Cabinet 水錶櫃

U.P. = Utility Platform 工作平台

UP = 往上

FLOOR PLANS OF RESIDENTIAL PROPERTIES IN THE DEVELOPMENT

發展項目的住宅物業的平面圖

Tower 1 第一座

3/F Floor Plan 3樓平面圖



Each Residential Property 每個住宅物業	Floor 樓層	Unit 單位				
		A	B	C	D	E
Thickness of Floor Slabs of the Ceiling (excluding cement sand screed) (mm) 天花板樓板 (不包括批盪灰泥) 的厚度 (毫米)	3/F	150	150	150	150	150
Floor-to-Floor Height (mm) 樓面至樓面之間的高度 (毫米)		3150	3150	3150	3150	3150

The internal areas of the residential properties on the upper floors will generally be slightly larger than those on the lower floors because of the reducing thickness of the structural walls on the upper floors.

因住宅物業的較高樓層的結構牆的厚度遞減，較高層的內部面積，一般比較低層的內部面積稍大。

FLOOR PLANS OF RESIDENTIAL PROPERTIES IN THE DEVELOPMENT

發展項目的住宅物業的平面圖

Tower 1 第一座

5/F to 11/F Floor Plan 5樓至11樓平面圖



Each Residential Property 每個住宅物業	Floor 樓層	Unit 單位				
		A	B	C	D	E
Thickness of Floor Slabs of the Ceiling (excluding cement sand screed) (mm) 天花板樓板 (不包括批盪灰泥) 的厚度 (毫米)	5/F-10/F	150	150	150	150	150
Floor-to-Floor Height (mm) 樓面至樓面之間的高度 (毫米)		3150	3150	3150	3150	3150
Thickness of Floor Slabs of the Ceiling (excluding cement sand screed) (mm) 天花板樓板 (不包括批盪灰泥) 的厚度 (毫米)	11/F	200	200	200	200	200
Floor-to-Floor Height (mm) 樓面至樓面之間的高度 (毫米)		3300	3300	3300	3300	3300

Scale 0 5M(米)
比例

The internal areas of the residential properties on the upper floors will generally be slightly larger than those on the lower floors because of the reducing thickness of the structural walls on the upper floors.

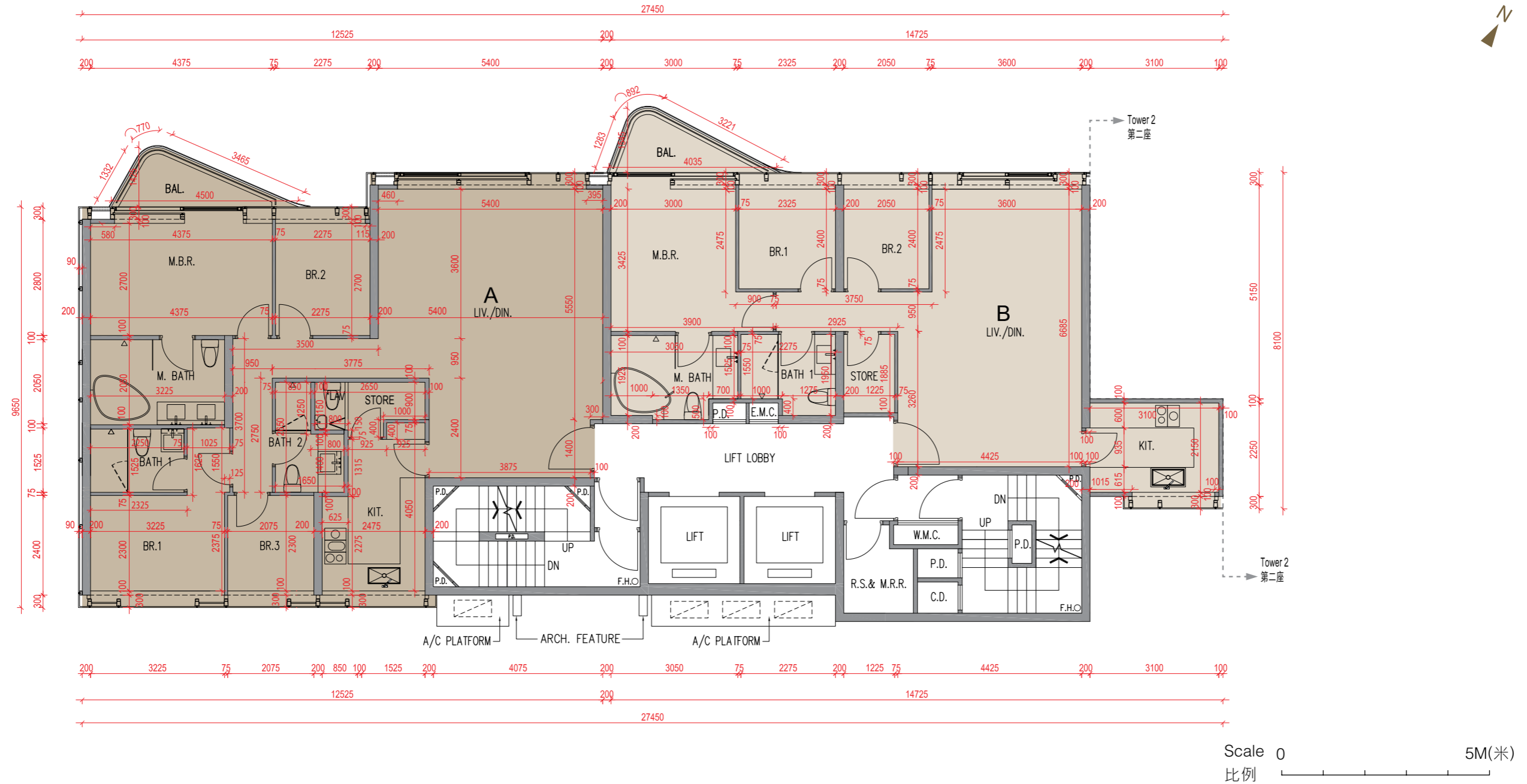
因住宅物業的較高樓層的結構牆的厚度遞減，較高層的內部面積，一般比較低層的內部面積稍大。

FLOOR PLANS OF RESIDENTIAL PROPERTIES IN THE DEVELOPMENT

發展項目的住宅物業的平面圖

Tower 1 第一座

15/F to 21/F Floor Plan 15樓至21樓平面圖



Each Residential Property 每個住宅物業	Floor 樓層	Unit 單位	
		A	B
Thickness of Floor Slabs of the Ceiling (excluding cement sand screed) (mm) 天花板樓板 (不包括批盪灰泥) 的厚度 (毫米)	15/F-21/F	150, 200	150, 200
Floor-to-Floor Height (mm) 樓面至樓面之間的高度 (毫米)		3150	3150

The internal areas of the residential properties on the upper floors will generally be slightly larger than those on the lower floors because of the reducing thickness of the structural walls on the upper floors.

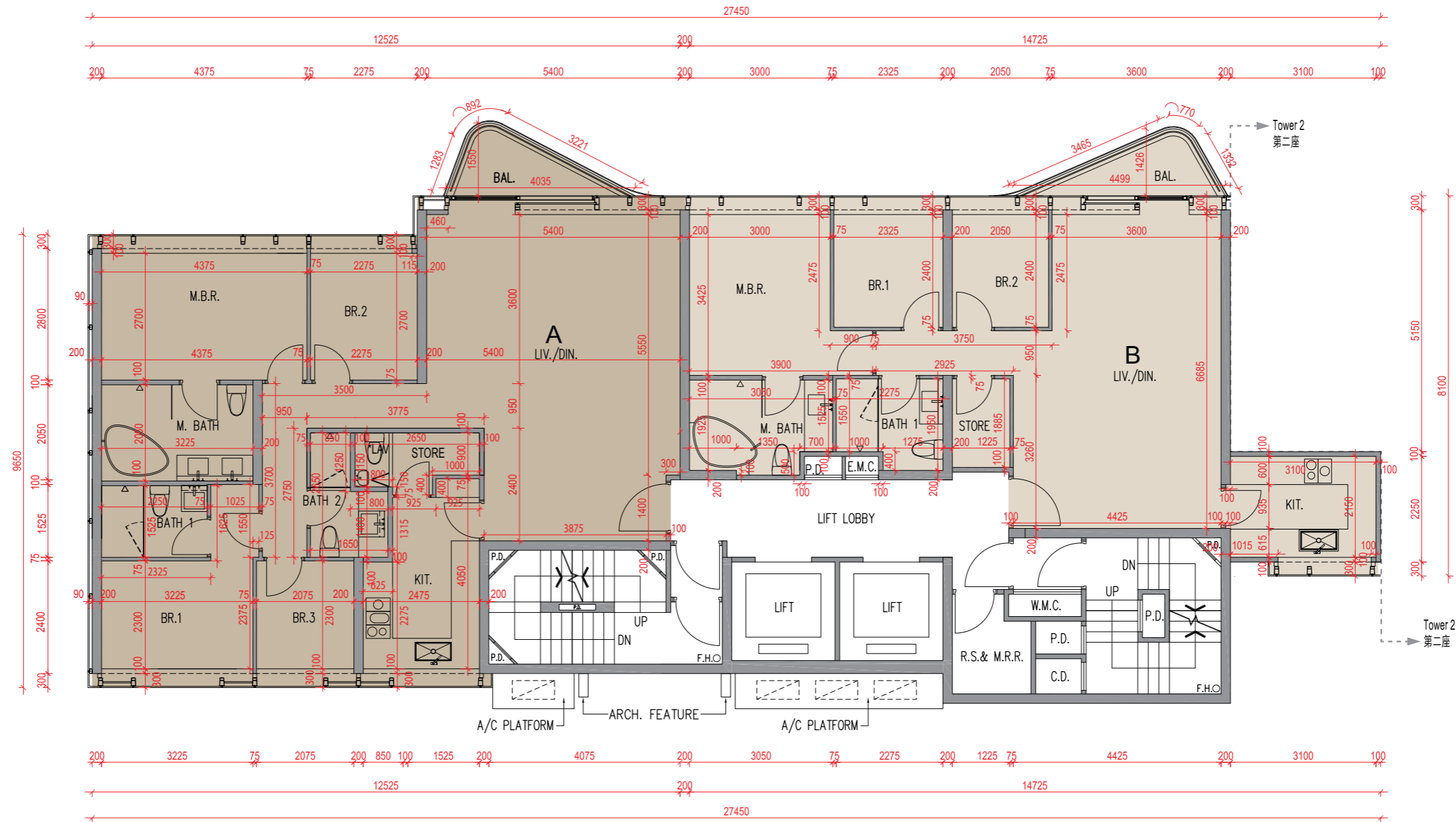
因住宅物業的較高樓層的結構牆的厚度遞減，較高層的內部面積，一般比較低層的內部面積稍大。

FLOOR PLANS OF RESIDENTIAL PROPERTIES IN THE DEVELOPMENT

發展項目的住宅物業的平面圖

Tower 1 第一座

22/F to 28/F Floor Plan 22樓至28樓平面圖 (24/F is omitted 不設24樓)



Each Residential Property 每個住宅物業	Floor 樓層	Unit 單位	
		A	B
Thickness of Floor Slabs of the Ceiling (excluding cement sand screed) (mm) 天花板樓板 (不包括批盪灰泥) 的厚度 (毫米)	22/F-27/F (24/F omitted 不設24樓)	150, 200	150, 200
Floor-to-Floor Height (mm) 樓面至樓面之間的高度 (毫米)		3150	3150
Thickness of Floor Slabs of the Ceiling (excluding cement sand screed) (mm) 天花板樓板 (不包括批盪灰泥) 的厚度 (毫米)	28/F	150, 200	150, 200
Floor-to-Floor Height (mm) 樓面至樓面之間的高度 (毫米)		3500	3500

Scale 0 5M(米)
比例

The internal areas of the residential properties on the upper floors will generally be slightly larger than those on the lower floors because of the reducing thickness of the structural walls on the upper floors.

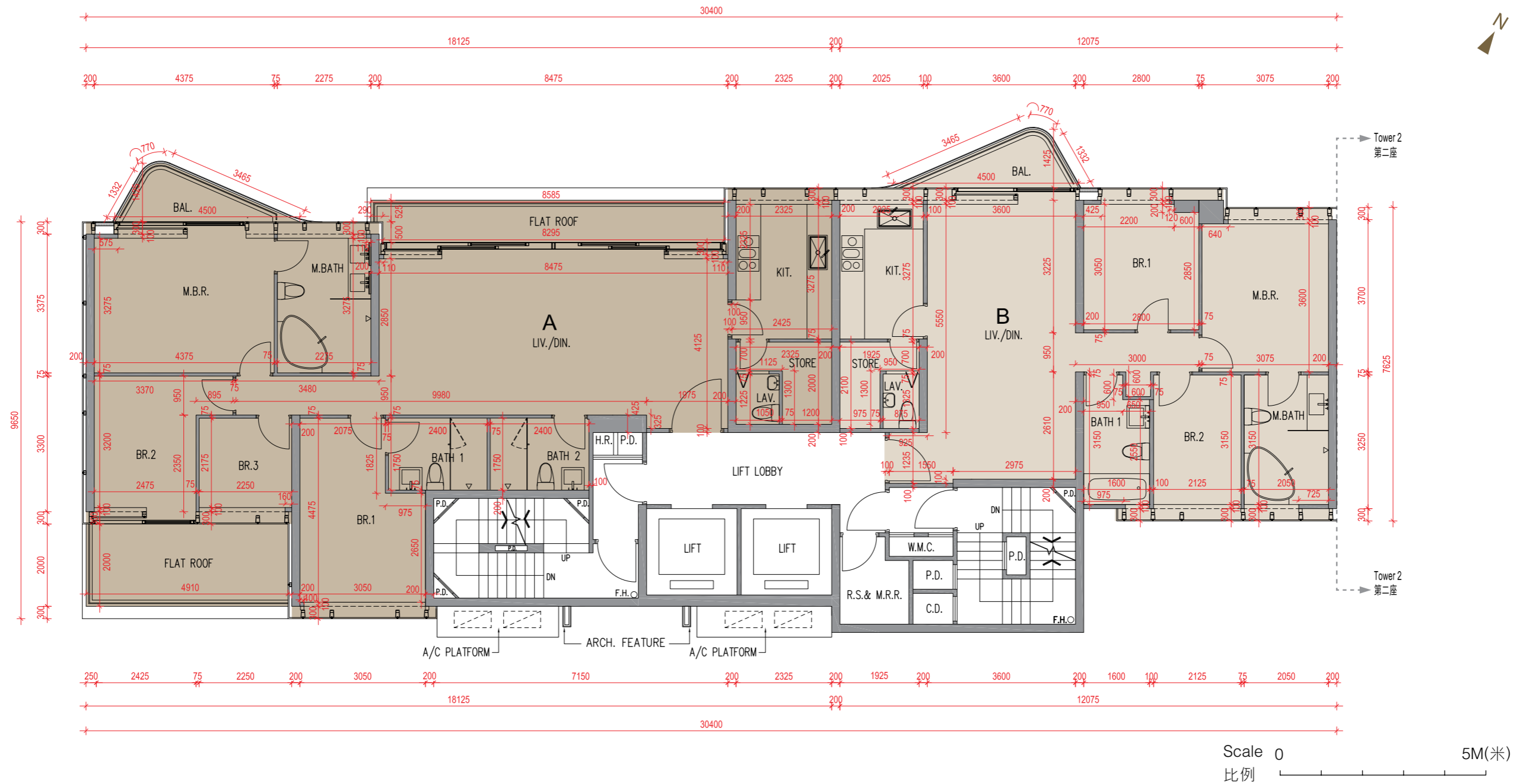
因住宅物業的較高樓層的結構牆的厚度遞減，較高層的內部面積，一般比較低層的內部面積稍大。

FLOOR PLANS OF RESIDENTIAL PROPERTIES IN THE DEVELOPMENT

發展項目的住宅物業的平面圖

Tower 1 第一座

29/F Floor Plan 29樓平面圖



Each Residential Property 每個住宅物業	Floor 樓層	Unit 單位	
		A	B
Thickness of Floor Slabs of the Ceiling (excluding cement sand screed) (mm) 天花板樓板 (不包括批盪灰泥) 的厚度 (毫米)	29/F	150, 200	150
Floor-to-Floor Height (mm) 樓面至樓面之間的高度 (毫米)		3300	3300

The internal areas of the residential properties on the upper floors will generally be slightly larger than those on the lower floors because of the reducing thickness of the structural walls on the upper floors.

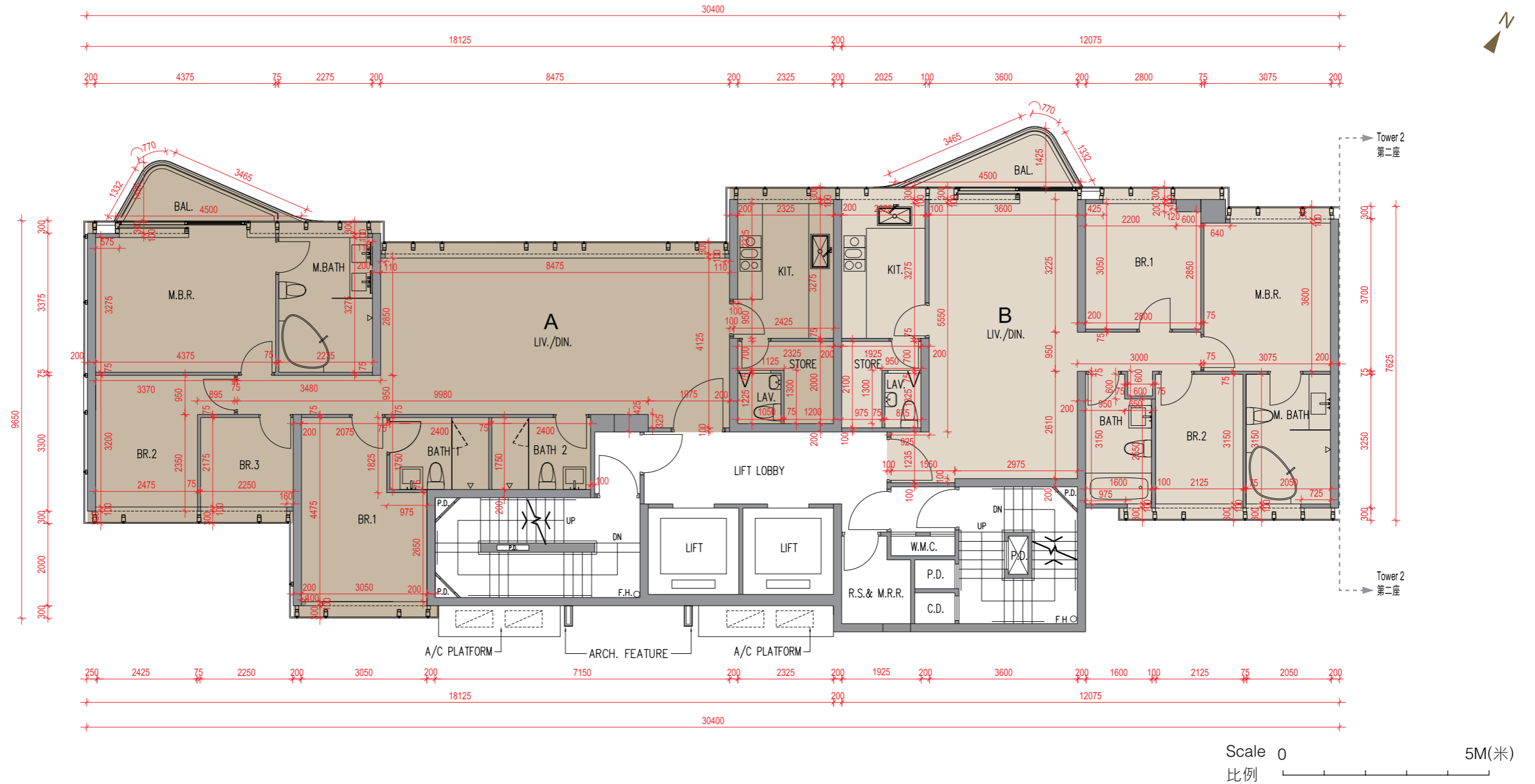
因住宅物業的較高樓層的結構牆的厚度遞減，較高層的內部面積，一般比較低層的內部面積稍大。

FLOOR PLANS OF RESIDENTIAL PROPERTIES IN THE DEVELOPMENT

發展項目的住宅物業的平面圖

Tower 1 第一座

30/F Floor Plan 30樓平面圖



Each Residential Property 每個住宅物業	Floor 樓層	Unit 單位	
		A	B
Thickness of Floor Slabs of the Ceiling (excluding cement sand screed) (mm) 天花板樓板 (不包括批盪灰泥) 的厚度 (毫米)	30/F	150, 200	150
Floor-to-Floor Height (mm) 樓面至樓面之間的高度 (毫米)		3500	3500

The internal areas of the residential properties on the upper floors will generally be slightly larger than those on the lower floors because of the reducing thickness of the structural walls on the upper floors.

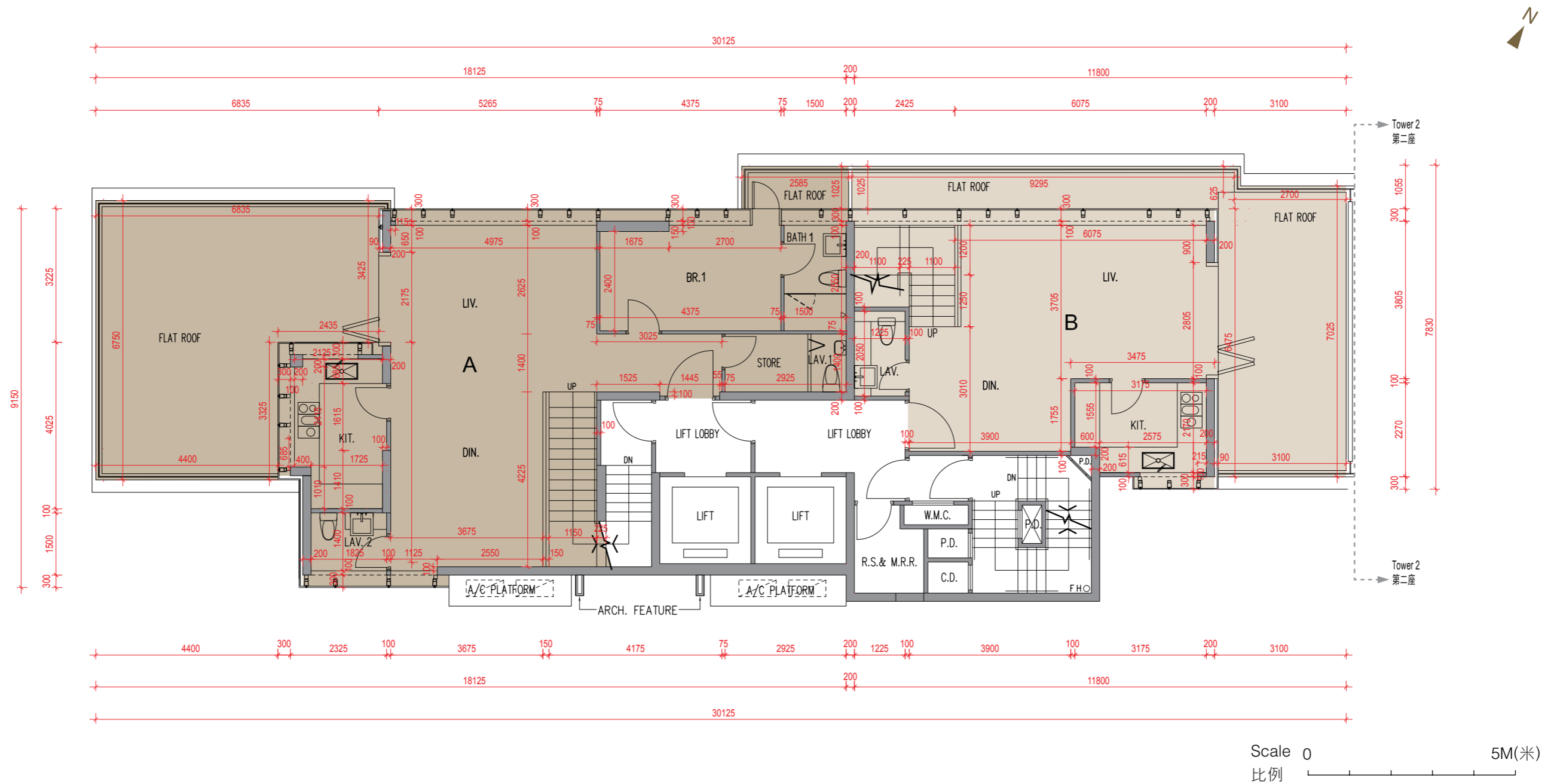
因住宅物業的較高樓層的結構牆的厚度遞減，較高層的內部面積，一般比較低層的內部面積稍大。

FLOOR PLANS OF RESIDENTIAL PROPERTIES IN THE DEVELOPMENT

發展項目的住宅物業的平面圖

Tower 1 第一座

31/F Floor Plan 31樓平面圖



Each Residential Property 每個住宅物業	Floor 樓層	Unit 單位	
		A	B
Thickness of Floor Slabs of the Ceiling (excluding cement sand screed) (mm) 天花板樓板 (不包括批盪灰泥) 的厚度 (毫米)	31/F	150, 200	150, 200
Floor-to-Floor Height (mm) 樓面至樓面之間的高度 (毫米)		3300	3300

The internal areas of the residential properties on the upper floors will generally be slightly larger than those on the lower floors because of the reducing thickness of the structural walls on the upper floors.

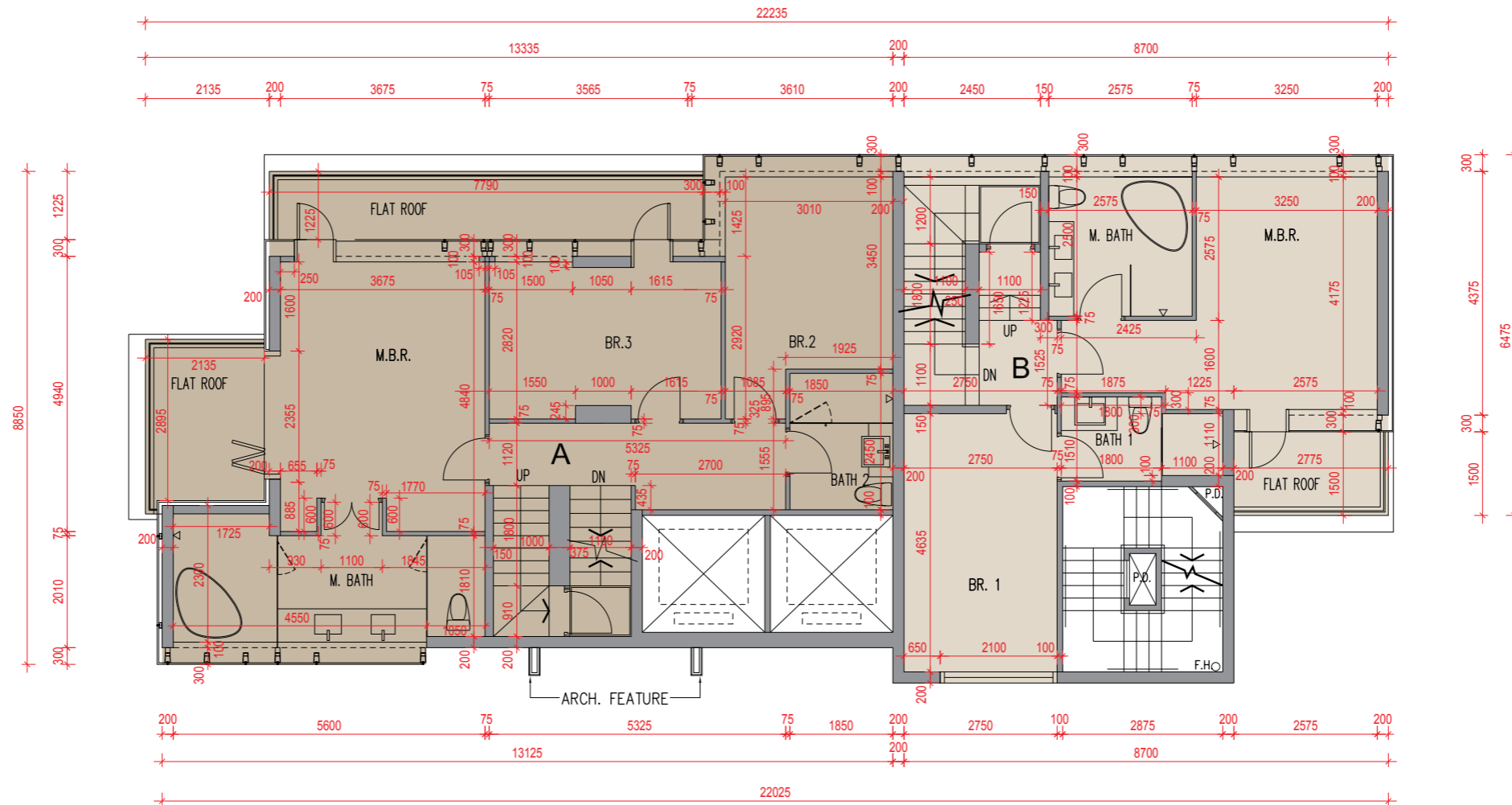
因住宅物業的較高樓層的結構牆的厚度遞減，較高層的內部面積，一般比較低層的內部面積稍大。

FLOOR PLANS OF RESIDENTIAL PROPERTIES IN THE DEVELOPMENT

發展項目的住宅物業的平面圖

Tower 1 第一座

32/F Floor Plan 32樓平面圖



Scale 0 5M(米)
比例

Each Residential Property 每個住宅物業	Floor 樓層	Unit 單位	
		A	B
Thickness of Floor Slabs of the Ceiling (excluding cement sand screed) (mm) 天花板樓板 (不包括批盪灰泥) 的厚度 (毫米)	32/F	150, 200	150, 200
Floor-to-Floor Height (mm) 樓面至樓面之間的高度 (毫米)		3300	3300

The internal areas of the residential properties on the upper floors will generally be slightly larger than those on the lower floors because of the reducing thickness of the structural walls on the upper floors.

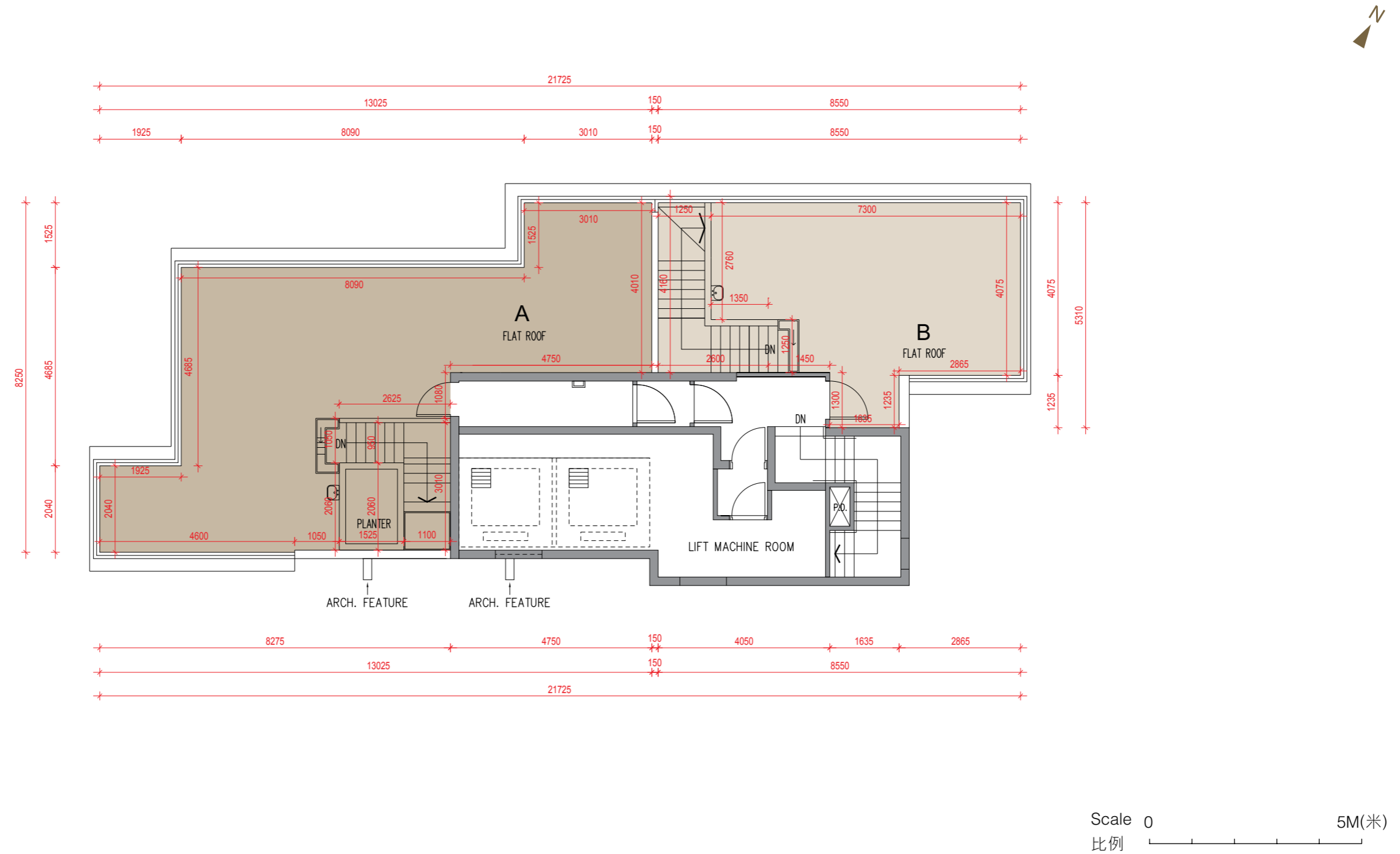
因住宅物業的較高樓層的結構牆的厚度遞減，較高層的內部面積，一般比較低層的內部面積稍大。

FLOOR PLANS OF RESIDENTIAL PROPERTIES IN THE DEVELOPMENT

發展項目的住宅物業的平面圖

Tower 1 第一座

Roof Plan 天台平面圖

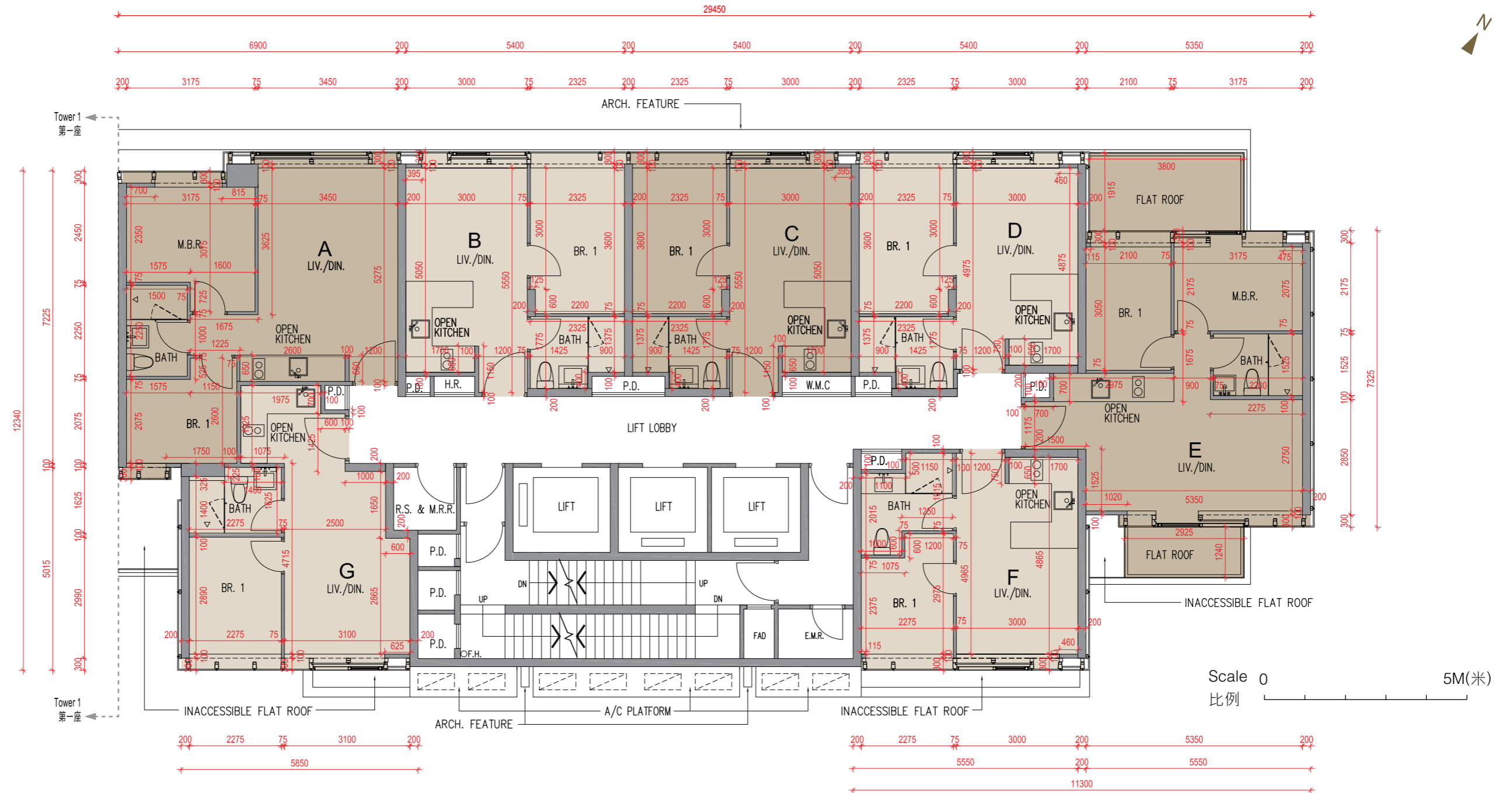


FLOOR PLANS OF RESIDENTIAL PROPERTIES IN THE DEVELOPMENT

發展項目的住宅物業的平面圖

Tower 2 第二座

3/F Floor Plan 3樓平面圖



Each Residential Property 每個住宅物業	Floor 樓層	Unit 單位						
		A	B	C	D	E	F	G
Thickness of Floor Slabs of the Ceiling (excluding cement sand screed) (mm) 天花板樓板 (不包括批盪灰泥) 的厚度 (毫米)	3/F	150	150	150	150	150	150	150
Floor-to-Floor Height (mm) 樓面至樓面之間的高度 (毫米)		3150	3150	3150	3150	3150	3150	3150

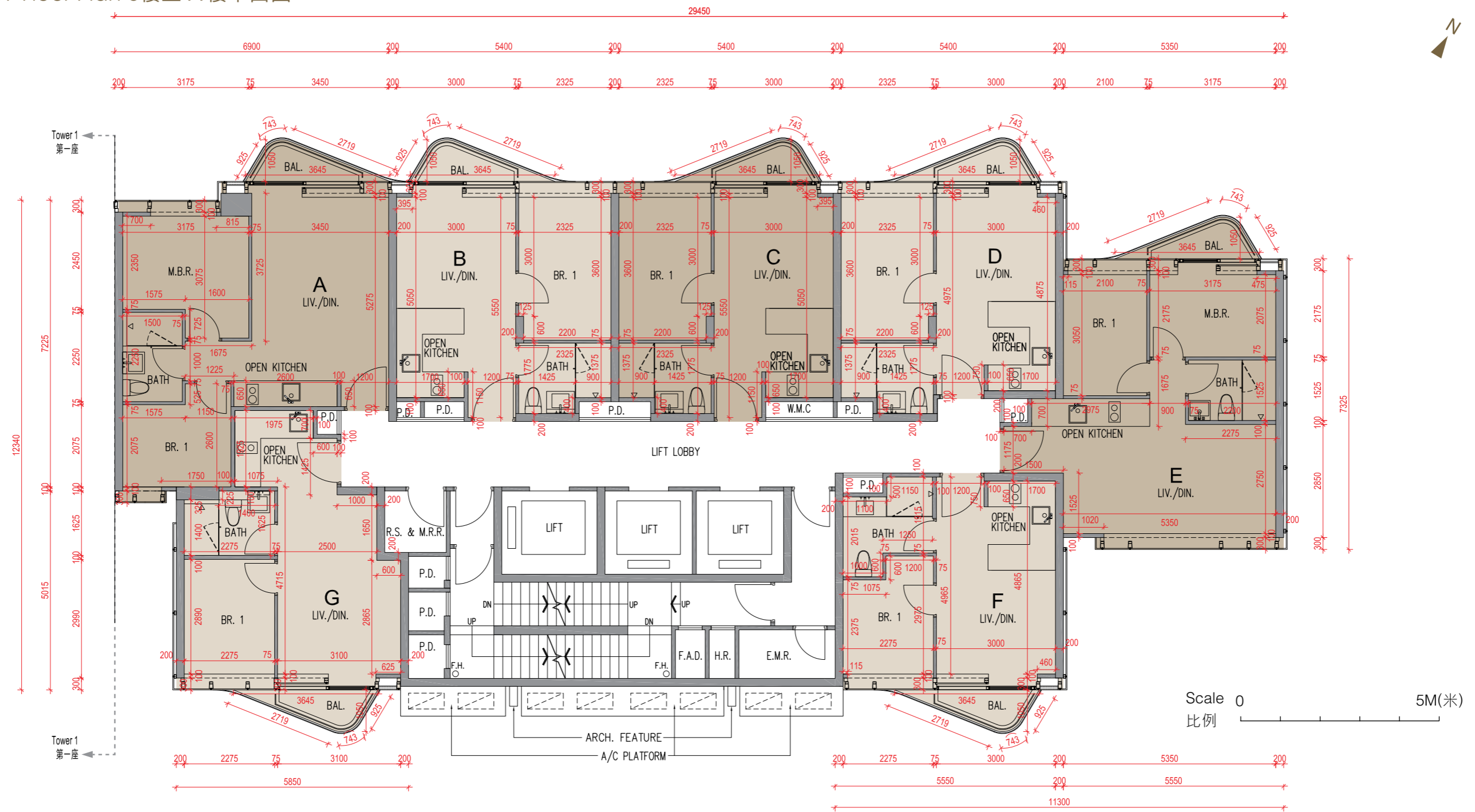
The internal areas of the residential properties on the upper floors will generally be slightly larger than those on the lower floors because of the reducing thickness of the structural walls on the upper floors.
因住宅物業的較高樓層的結構牆的厚度遞減，較高層的內部面積，一般比較低層的內部面積稍大。

FLOOR PLANS OF RESIDENTIAL PROPERTIES IN THE DEVELOPMENT

發展項目的住宅物業的平面圖

Tower 2 第二座

5/F to 11/F Floor Plan 5樓至11樓平面圖



Each Residential Property 每個住宅物業	Floor 樓層	Unit 單位						
		A	B	C	D	E	F	G
Thickness of Floor Slabs of the Ceiling (excluding cement sand screed) (mm) 天花板樓板 (不包括批盪灰泥) 的厚度 (毫米)	5/F-10/F	150	150	150	150	150	150	150
Floor-to-Floor Height (mm) 樓面至樓面之間的高度 (毫米)		3150	3150	3150	3150	3150	3150	3150
Thickness of Floor Slabs of the Ceiling (excluding cement sand screed) (mm) 天花板樓板 (不包括批盪灰泥) 的厚度 (毫米)	11/F	200	200	200	200	200	200	200
Floor-to-Floor Height (mm) 樓面至樓面之間的高度 (毫米)		3300	3300	3300	3300	3300	3300	3300

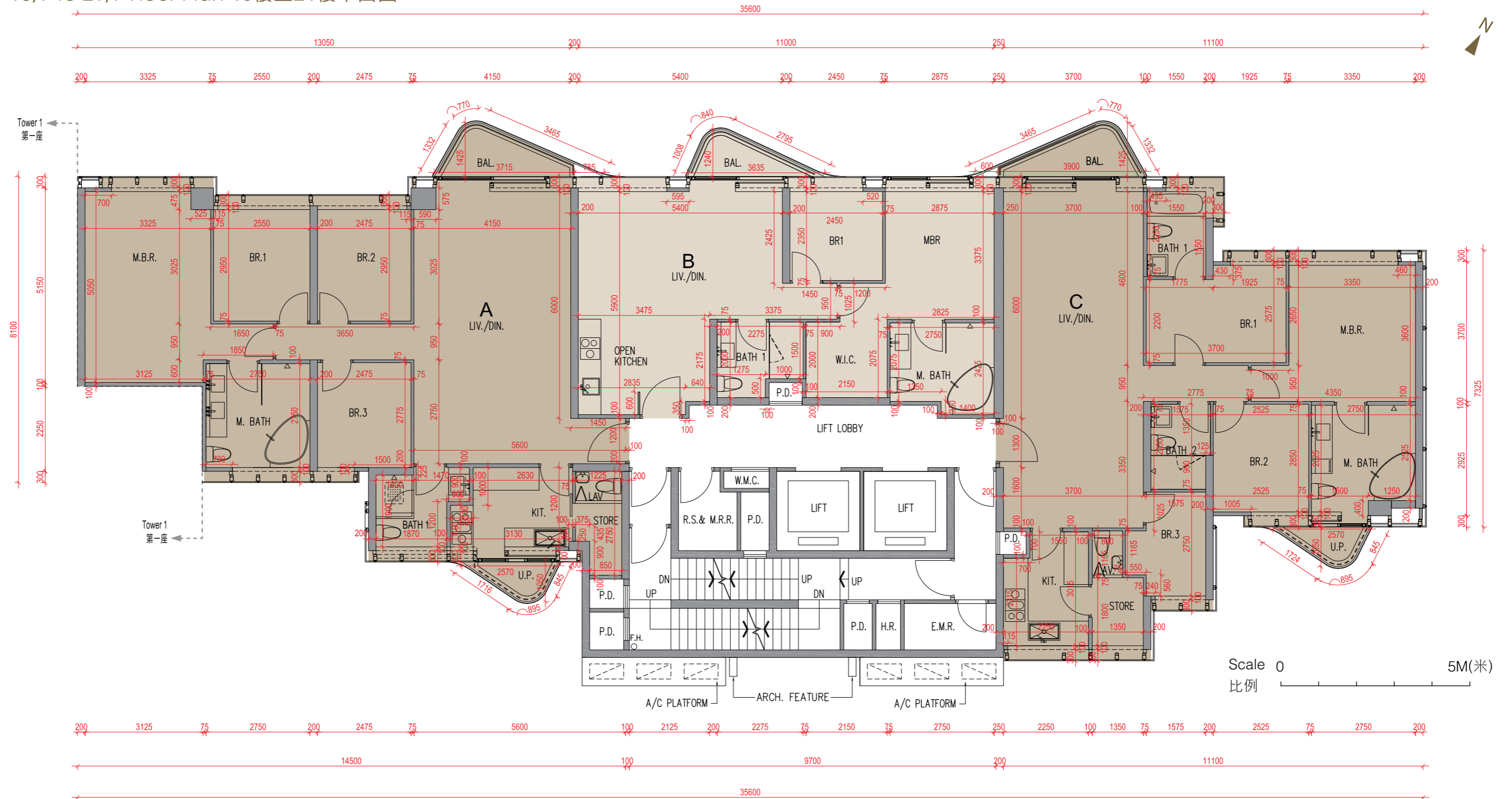
The internal areas of the residential properties on the upper floors will generally be slightly larger than those on the lower floors because of the reducing thickness of the structural walls on the upper floors.
因住宅物業的較高樓層的結構牆的厚度遞減，較高層的內部面積，一般比較低層的內部面積稍大。

FLOOR PLANS OF RESIDENTIAL PROPERTIES IN THE DEVELOPMENT

發展項目的住宅物業的平面圖

Tower 2 第二座

15/F to 21/F Floor Plan 15樓至21樓平面圖



Each Residential Property 每個住宅物業	Floor 樓層	Unit 單位		
		A	B	C
Thickness of Floor Slabs of the Ceiling (excluding cement sand screed) (mm) 天花板樓板 (不包括批盪灰泥) 的厚度 (毫米)	15/F-21/F	150, 200	150	150
Floor-to-Floor Height (mm) 樓面至樓面之間的高度 (毫米)		3150	3150	3150

The internal areas of the residential properties on the upper floors will generally be slightly larger than those on the lower floors because of the reducing thickness of the structural walls on the upper floors.

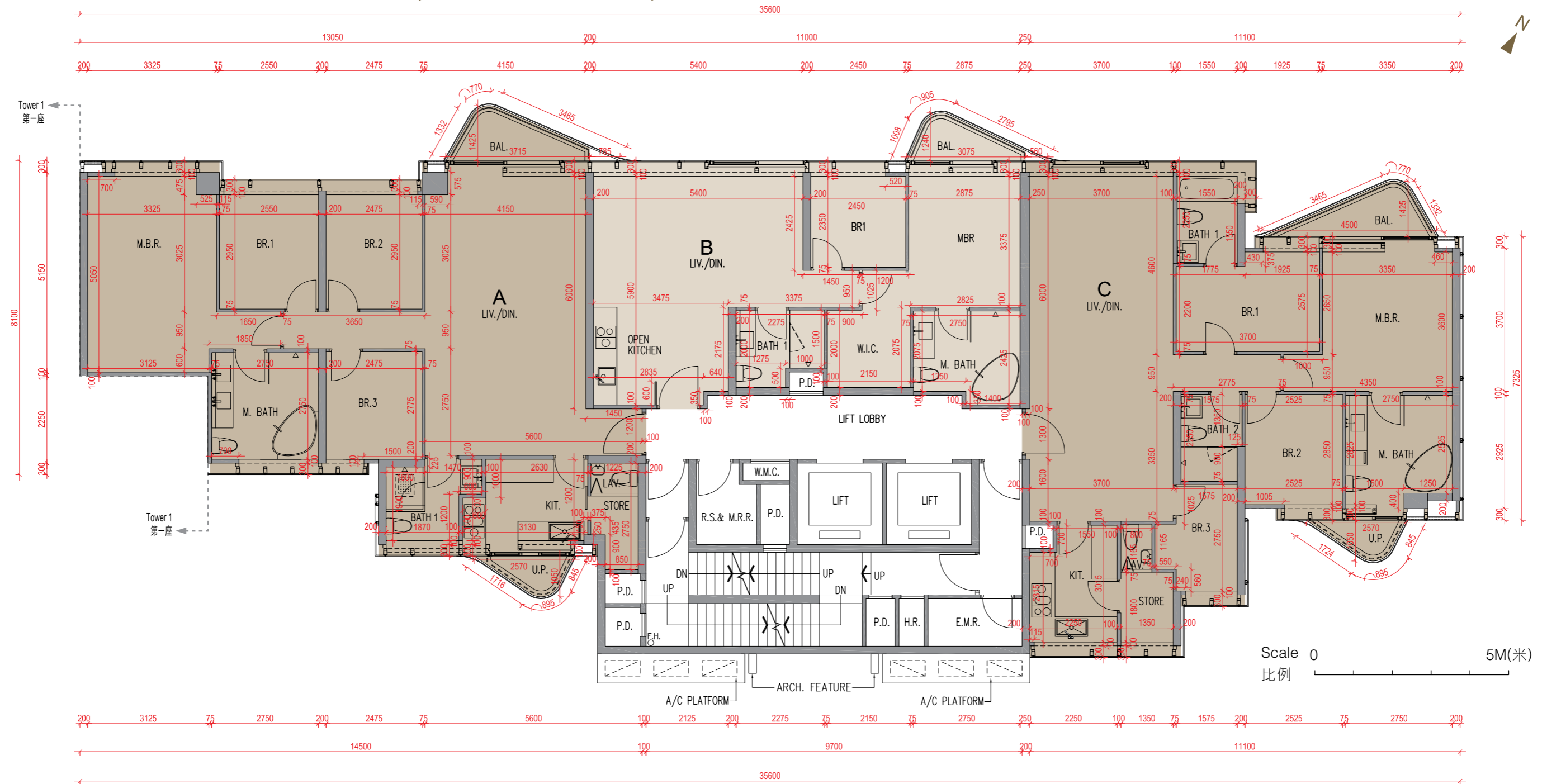
因住宅物業的較高樓層的結構牆的厚度遞減，較高層的內部面積，一般比較低層的內部面積稍大。

FLOOR PLANS OF RESIDENTIAL PROPERTIES IN THE DEVELOPMENT

發展項目的住宅物業的平面圖

Tower 2 第二座

22/F to 28/F Floor Plan 22樓至28樓平面圖 (24/F is omitted 不設24樓)



Each Residential Property 每個住宅物業	Floor 樓層	Unit 單位		
		A	B	C
Thickness of Floor Slabs of the Ceiling (excluding cement sand screed) (mm) 天花板樓板 (不包括批盪灰泥) 的厚度 (毫米)	22/F-27/F (24/F omitted 不設24樓)	150, 200	150	150
Floor-to-Floor Height (mm) 樓面至樓面之間的高度 (毫米)		3150	3150	3150
Thickness of Floor Slabs of the Ceiling (excluding cement sand screed) (mm) 天花板樓板 (不包括批盪灰泥) 的厚度 (毫米)	28/F	150, 200	150	150, 200
Floor-to-Floor Height (mm) 樓面至樓面之間的高度 (毫米)		3500	3500	3500

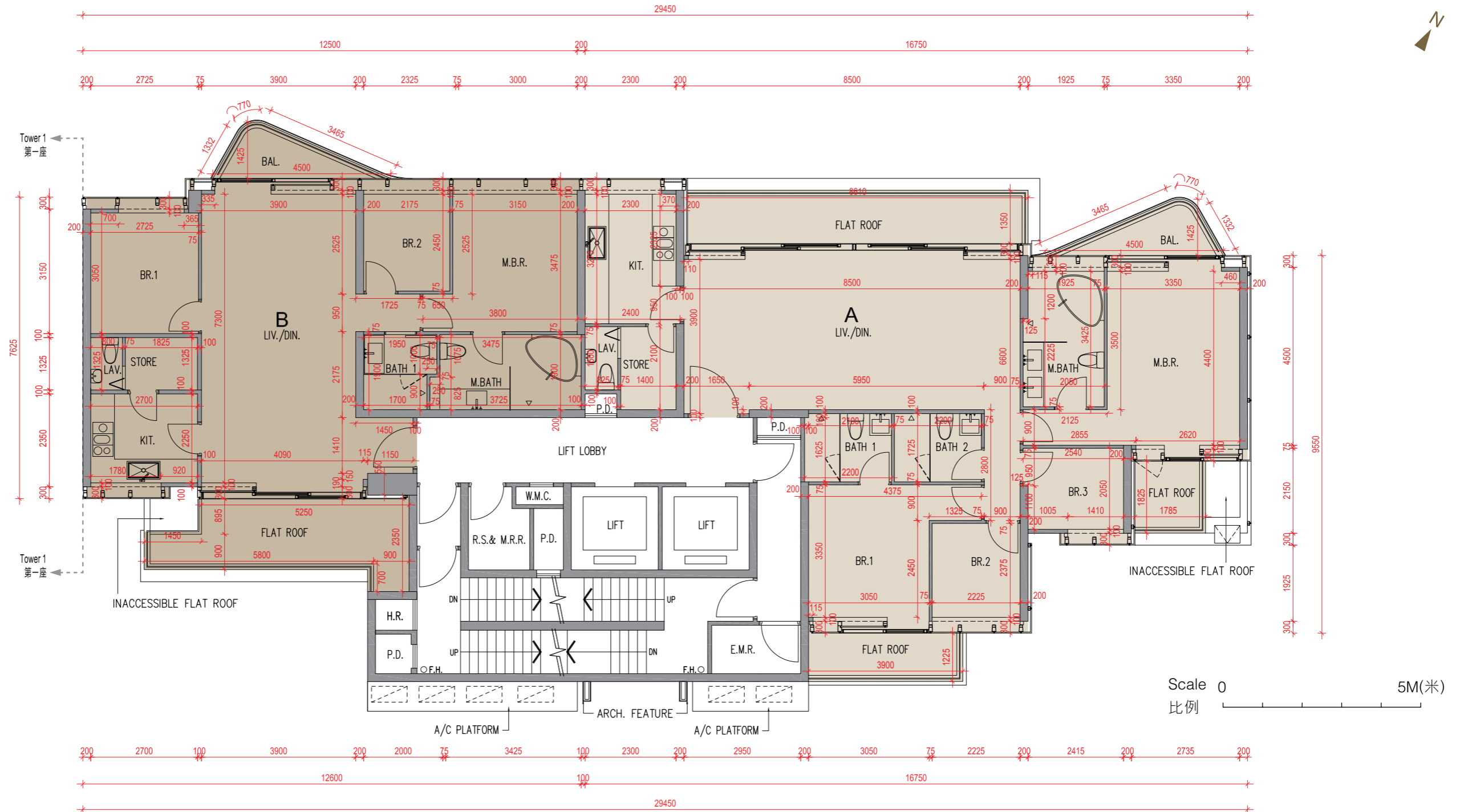
The internal areas of the residential properties on the upper floors will generally be slightly larger than those on the lower floors because of the reducing thickness of the structural walls on the upper floors.
因住宅物業的較高樓層的結構牆的厚度遞減，較高層的內部面積，一般比較低層的內部面積稍大。

FLOOR PLANS OF RESIDENTIAL PROPERTIES IN THE DEVELOPMENT

發展項目的住宅物業的平面圖

Tower 2 第二座

29/F Floor Plan 29樓平面圖



Each Residential Property 每個住宅物業	Floor 樓層	Unit 單位	
		A	B
Thickness of Floor Slabs of the Ceiling (excluding cement sand screed) (mm) 天花板樓板 (不包括批盪灰泥) 的厚度 (毫米)	29/F	150, 200	150, 200
Floor-to-Floor Height (mm) 樓面至樓面之間的高度 (毫米)		3300	3300

The internal areas of the residential properties on the upper floors will generally be slightly larger than those on the lower floors because of the reducing thickness of the structural walls on the upper floors.

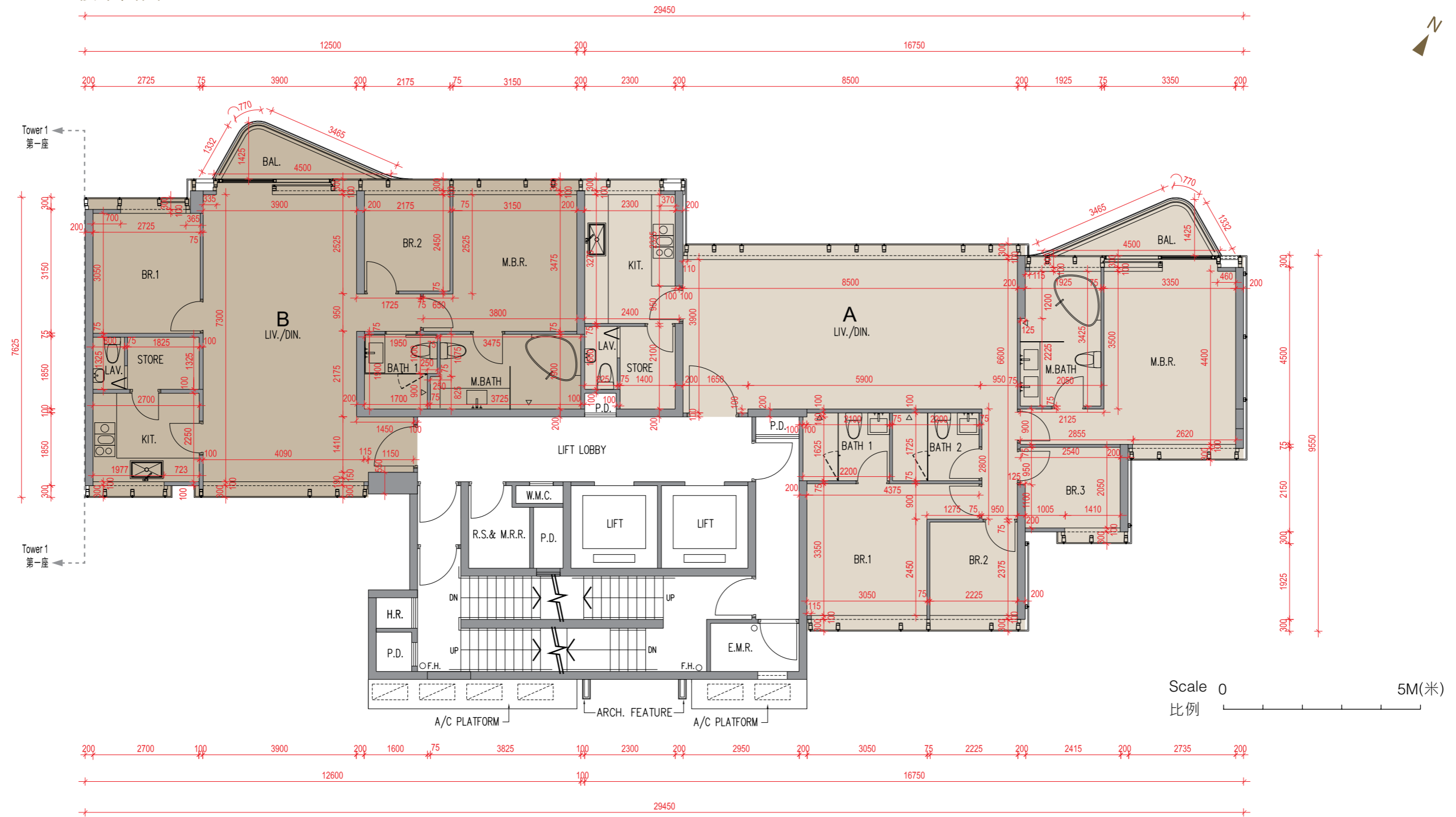
因住宅物業的較高樓層的結構牆的厚度遞減，較高層的內部面積，一般比較低層的內部面積稍大。

FLOOR PLANS OF RESIDENTIAL PROPERTIES IN THE DEVELOPMENT

發展項目的住宅物業的平面圖

Tower 2 第二座

30/F Floor Plan 30樓平面圖



Each Residential Property 每個住宅物業	Floor 樓層	Unit 單位	
		A	B
Thickness of Floor Slabs of the Ceiling (excluding cement sand screed) (mm) 天花板樓板 (不包括批盪灰泥) 的厚度 (毫米)	30/F	150, 200	150, 200
Floor-to-Floor Height (mm) 樓面至樓面之間的高度 (毫米)		3500	3500

The internal areas of the residential properties on the upper floors will generally be slightly larger than those on the lower floors because of the reducing thickness of the structural walls on the upper floors.

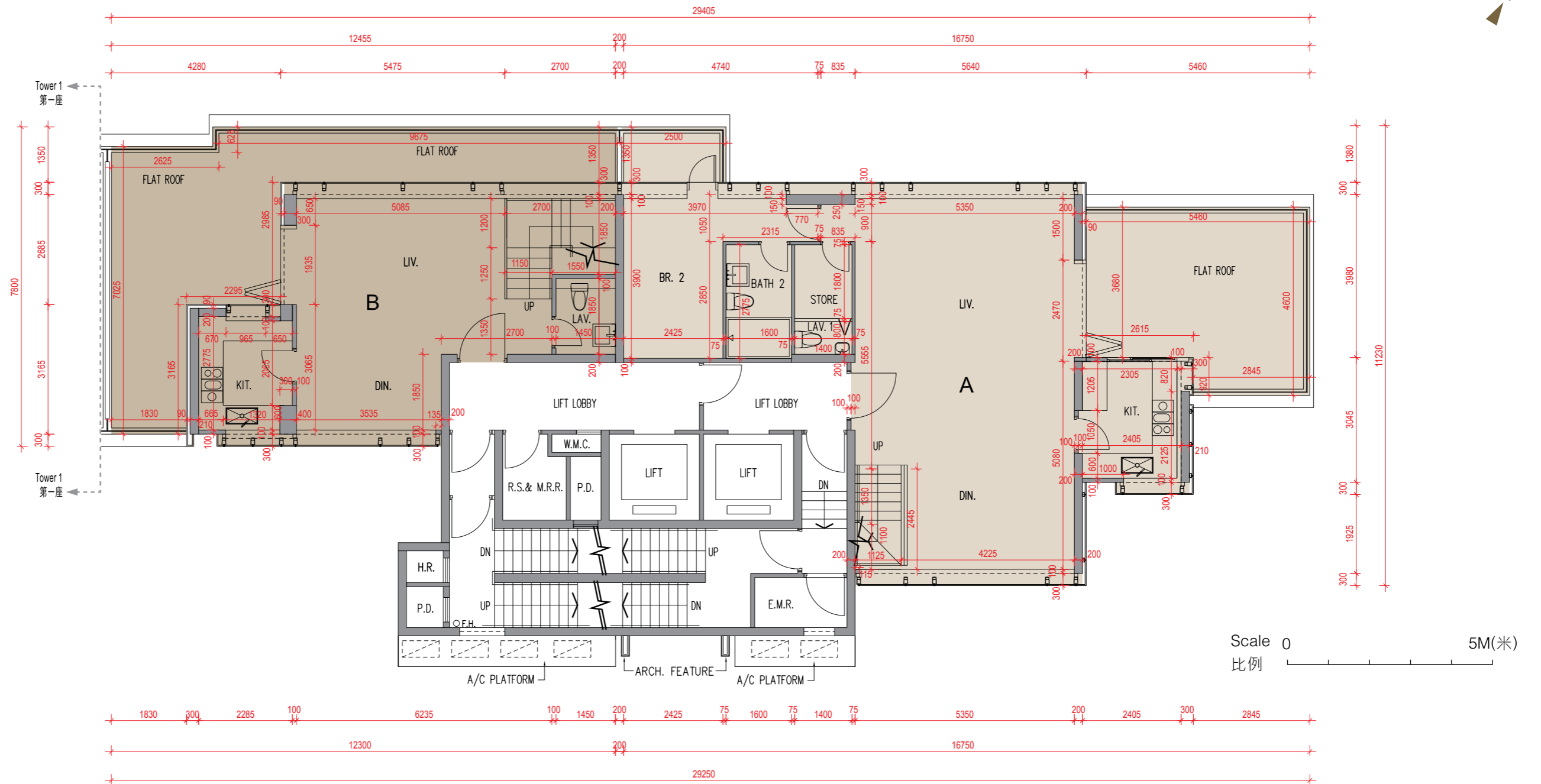
因住宅物業的較高樓層的結構牆的厚度遞減，較高層的內部面積，一般比較低層的內部面積稍大。

FLOOR PLANS OF RESIDENTIAL PROPERTIES IN THE DEVELOPMENT

發展項目的住宅物業的平面圖

Tower 2 第二座

31/F Floor Plan 31樓平面圖



Each Residential Property 每個住宅物業	Floor 樓層	Unit 單位	
		A	B
Thickness of Floor Slabs of the Ceiling (excluding cement sand screed) (mm) 天花板樓板 (不包括批盪灰泥) 的厚度 (毫米)	31/F	150, 200	150, 200
Floor-to-Floor Height (mm) 樓面至樓面之間的高度 (毫米)		3300	3300

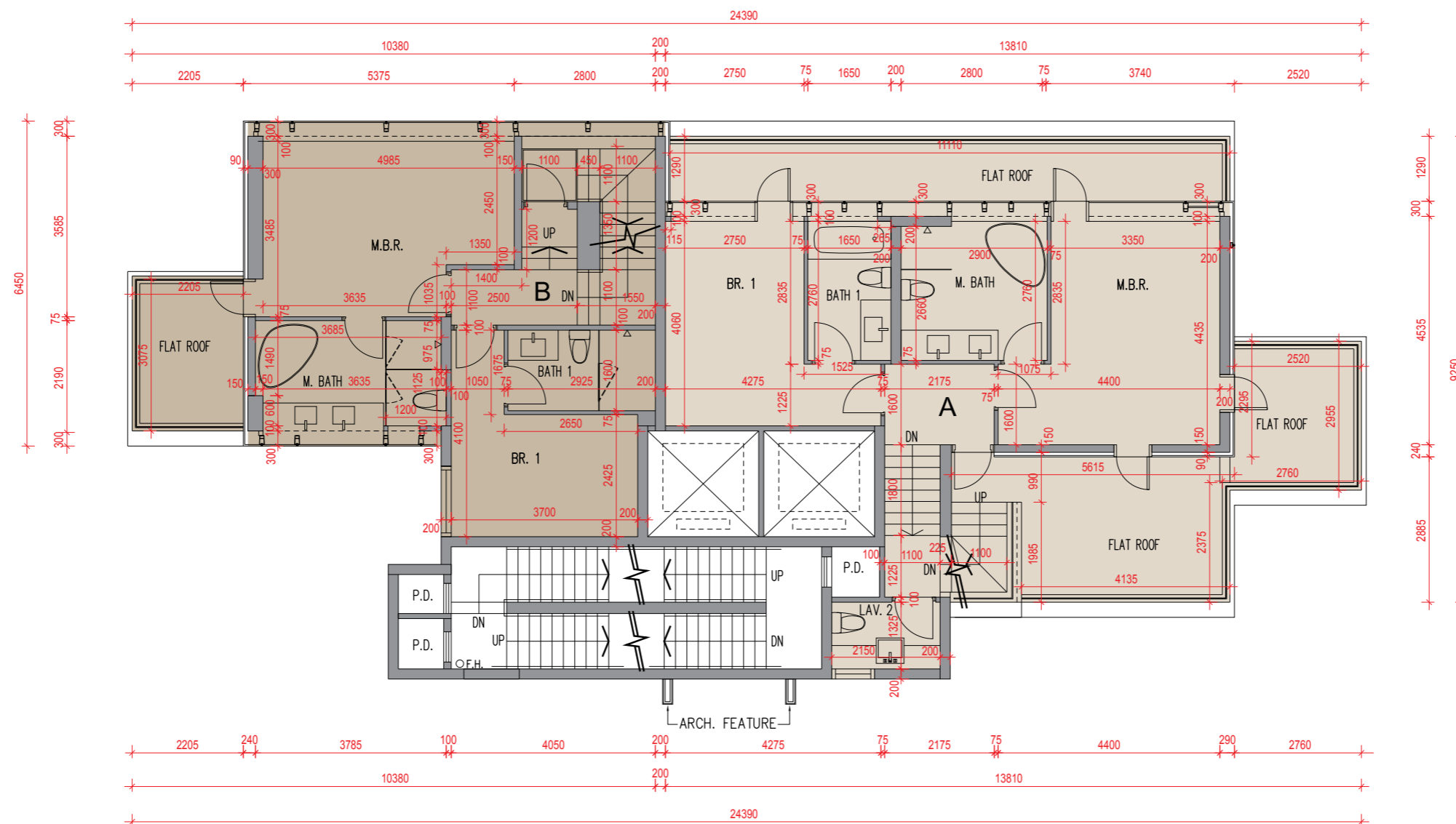
The internal areas of the residential properties on the upper floors will generally be slightly larger than those on the lower floors because of the reducing thickness of the structural walls on the upper floors.
因住宅物業的較高樓層的結構牆的厚度遞減，較高層的內部面積，一般比較低層的內部面積稍大。

FLOOR PLANS OF RESIDENTIAL PROPERTIES IN THE DEVELOPMENT

發展項目的住宅物業的平面圖

Tower 2 第二座

32/F Floor Plan 32樓平面圖



Scale 0 5M(米)
比例 0 5M(米)

Each Residential Property 每個住宅物業	Floor 樓層	Unit 單位	
		A	B
Thickness of Floor Slabs of the Ceiling (excluding cement sand screed) (mm) 天花板樓板 (不包括批盪灰泥) 的厚度 (毫米)	32/F	150, 200	150, 200
Floor-to-Floor Height (mm) 樓面至樓面之間的高度 (毫米)		3300	3300

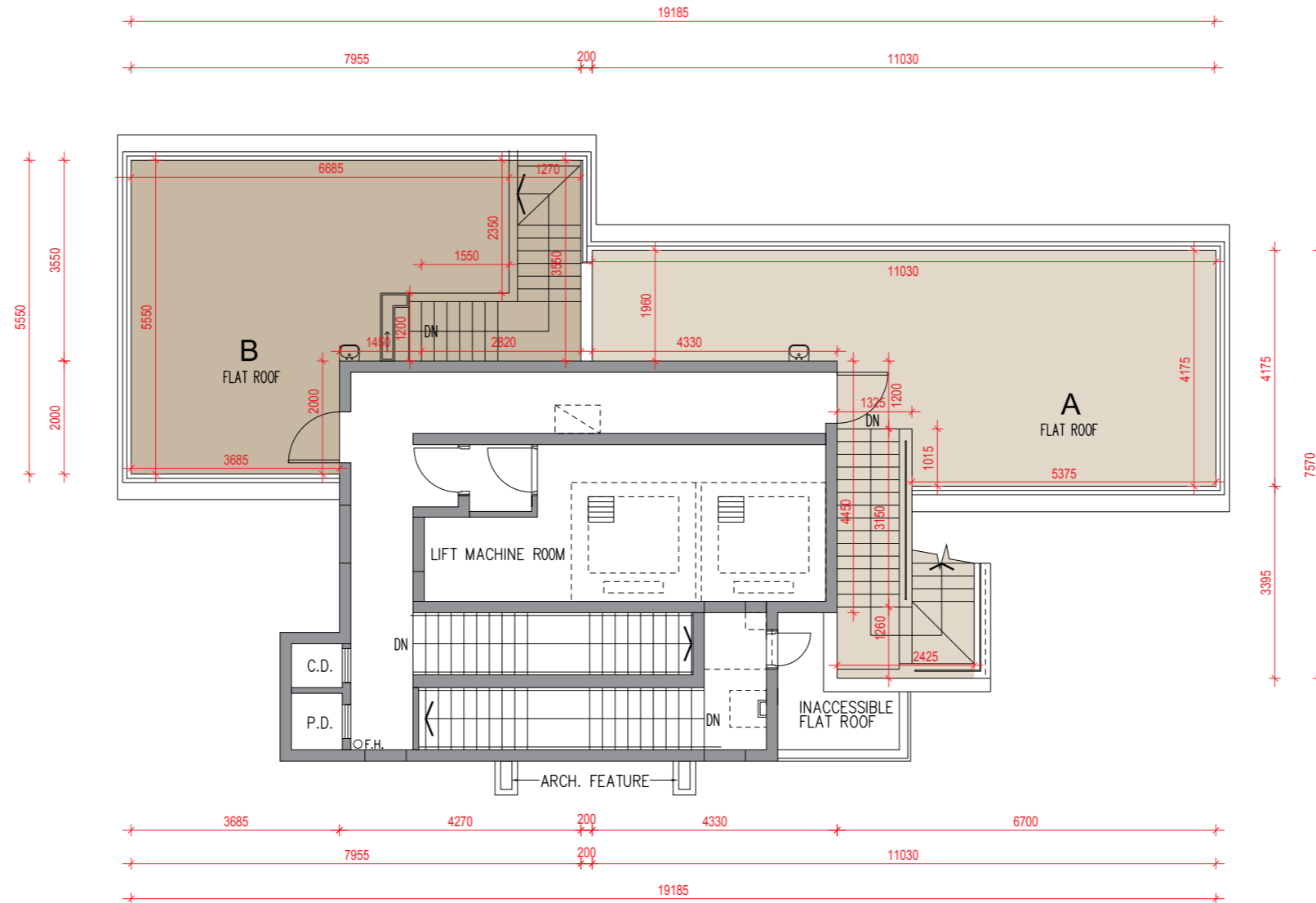
The internal areas of the residential properties on the upper floors will generally be slightly larger than those on the lower floors because of the reducing thickness of the structural walls on the upper floors.
因住宅物業的較高樓層的結構牆的厚度遞減，較高層的內部面積，一般比較低層的內部面積稍大。

FLOOR PLANS OF RESIDENTIAL PROPERTIES IN THE DEVELOPMENT

發展項目的住宅物業的平面圖

Tower 2 第二座

Roof Plan 天台平面圖



Scale 0 5M(米)
比例