

10 FLOOR PLANS OF RESIDENTIAL PROPERTIES IN THE DEVELOPMENT

發展項目的住宅物業的樓面平面圖

The remarks and legends on this page apply to all pages of "Floor plans of residential properties in the development".
在本頁上之備註和圖例適用於全部的「發展項目的住宅物業的樓面平面圖」頁數。

Legends of the Floor Plans

樓面平面圖圖例

A/C PLATFORM	=	Air-conditioner Platform 冷氣機平台
☼☼☼	=	Air-conditioning unit 冷氣機
ARCH. FEATURE	=	Architectural Feature 建築裝飾
BAL.	=	Balcony 露台
B.	=	Bathroom 浴室
C.L.	=	Cat Ladder 爬梯
M.B.R.1	=	Master Bedroom 1 主人睡房 1
B.R. 1	=	Bedroom 1 睡房 1
B.R. 2	=	Bedroom 2 睡房 2
B.R. 3	=	Bedroom 3 睡房 3
B.R. 4	=	Bedroom 4 睡房 4
ELECT. METER CABINET	=	Electric Meter Cabinet 電錶房
H.R.	=	Hose Reel 消防喉轆
KIT.	=	Kitchen 廚房
LIV./DIN.	=	Living Room / Dining Room 客廳/飯廳
L/L	=	Lower Level 低處
P.D.	=	Pipe Duct 管槽
STORE	=	Store Room 儲物房
T.O.B.	=	Top of Balcony 露台上蓋
T.O.U.P.	=	Top of Utility Platform 工作平台上蓋
U.P.	=	Utility Platform 工作平台
☐☐☐	=	Built-in fittings provided in the flats 隨樓附送的嵌入式裝置

Remarks:

1. Common pipes exposed or enclosed in cladding may be located at the balcony, utility platform, flat roof, roof or external wall of some residential units.
2. There may be sunken slabs at some parts of the ceiling inside some residential units for the installation of mechanical and electrical services of the floor above or due to the structural, architectural and/or decoration design requirements of the floor above.
3. There may be ceiling bulkheads or false ceiling inside some residential units for the installation of air-conditioning conduits and/or other mechanical and electrical services.
4. The dimensions of the floor plans are all structural dimensions in millimeter.
5. Blank areas on flat roof are common areas for building facility maintenance.

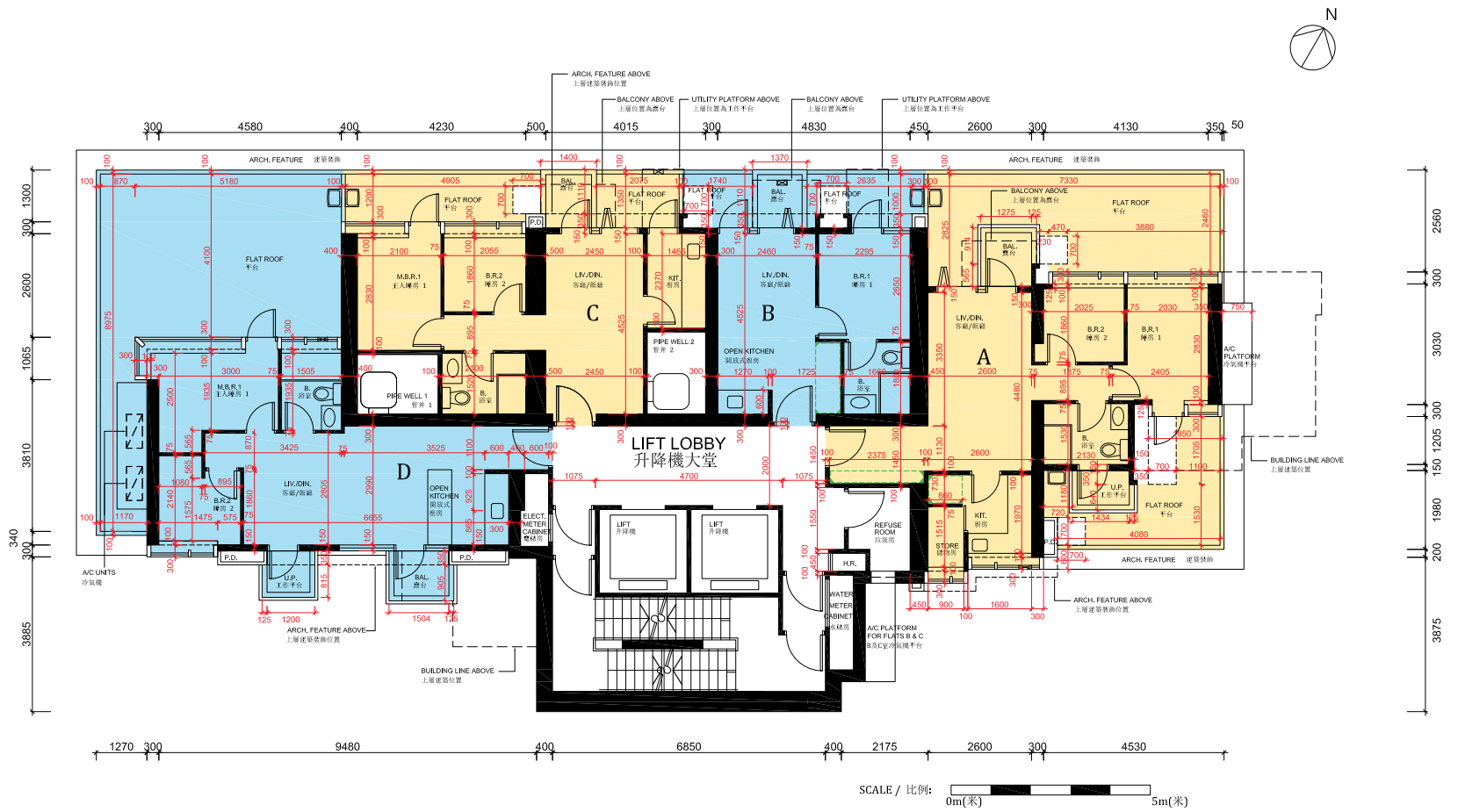
備註：

1. 部分住宅單位的露台、工作平台、平台、天台或外牆或設有外露之公用喉管，或外牆裝飾板內藏之公用喉管。
2. 部分住宅單位內之部分天花或有跌級樓板，用以安裝上層之機電設備或配合上層之結構、建築設計及 / 或裝修設計上的需要。
3. 部分住宅單位內或設有假陣或假天花用以安裝冷氣喉管及 / 或其他機電設備。
4. 平面圖所列之數字以毫米標示之建築結構尺寸。
5. 平台空白位置為供維修大廈設備使用的公用地方。

10 FLOOR PLANS OF RESIDENTIAL PROPERTIES IN THE DEVELOPMENT

發展項目的住宅物業的樓面平面圖

3/F Floor Plan 3樓平面圖



Each Residential Property 每個住宅物業	Flat 室 Floor 樓層	A	B	C	D
Floor to Floor Height (mm) 層與層之間的高度 (毫米)	3/F 3樓	3150	3150	3150	3150
Thickness of Floor Slab (excluding plaster) (mm) 樓板 (不包括灰泥) 的厚度 (毫米)		150	175	150	225

Notes: Blank areas on flat roof are common areas for building facility maintenance.

備註：平台空白位置為供維修大廈設備使用的公用地方。

Notes: The dimensions in floor plans are all structural dimensions in millimeter.

備註：平面圖所列的數字為以毫米標示之建築結構尺寸。

The internal areas of the residential properties on the upper floors will generally be slightly larger than those on the lower floors because of the reducing thickness of the structural walls on the upper floors.

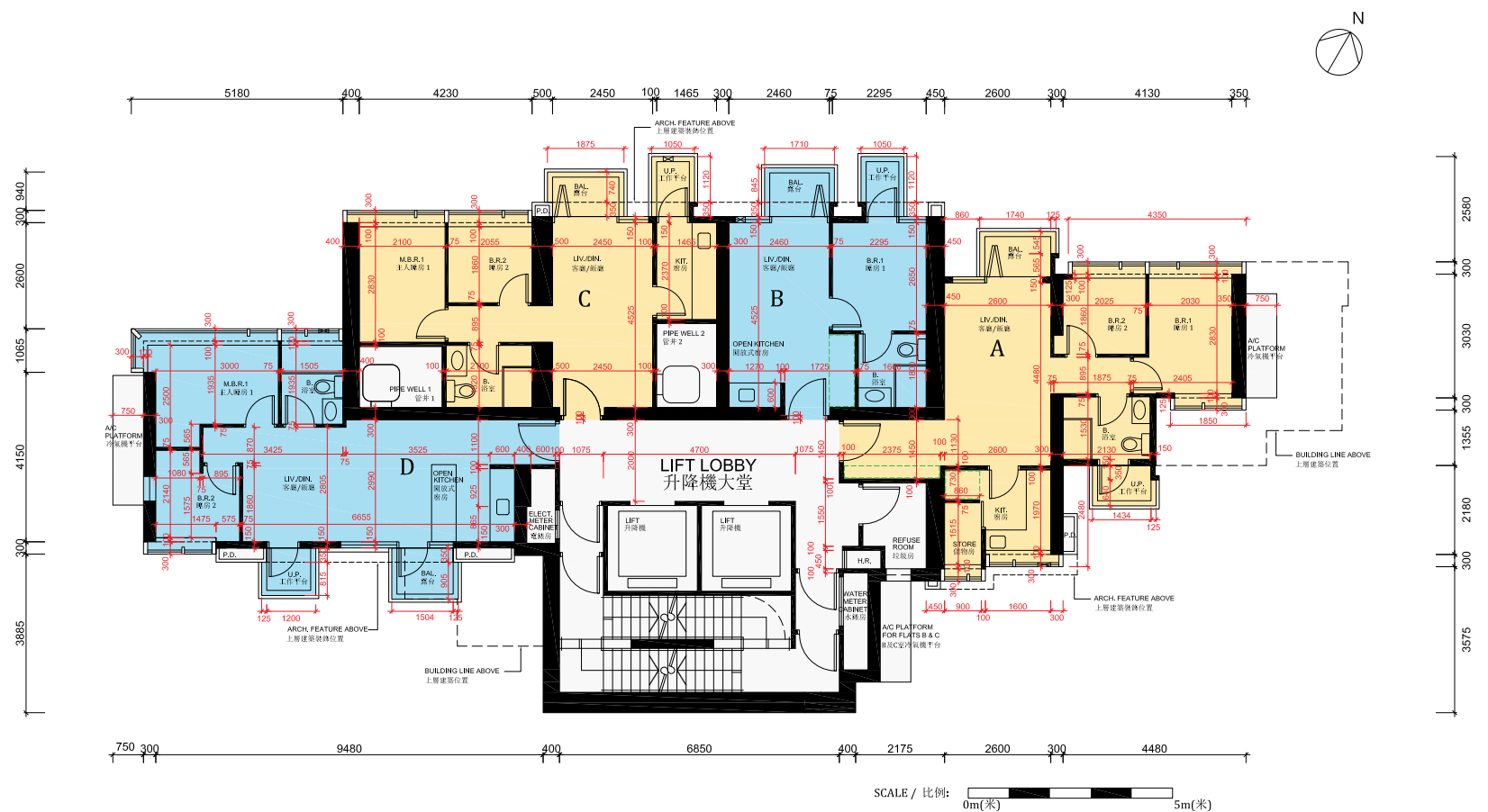
因住宅物業的較高樓層的結構牆的厚度遞減，較高樓層的內部面積，一般比較低樓層的內部面積稍大。

Please refer to page 15 of this sales brochure for the remarks and legends of the terms and abbreviations for the floor plans of residential properties.

請參閱本售樓說明書第 15 頁為住宅物業樓面平面圖而設之備註及名詞及簡稱的圖例。

10 FLOOR PLANS OF RESIDENTIAL PROPERTIES IN THE DEVELOPMENT 發展項目的住宅物業的樓面平面圖

5/F - 6/F Floor Plan 5樓 - 6樓平面圖



Each Residential Property 每個住宅物業	Flat 室 Floor 樓層	A	B	C	D
Floor to Floor Height (mm) 層與層之間的高度 (毫米)	5/F-6/F 5樓-6樓	3150	3150	3150	3150
Thickness of Floor Slab (excluding plaster) (mm) 樓板 (不包括灰泥) 的厚度 (毫米)		150	175	150	225

Notes: The dimensions in floor plans are all structural dimensions in millimeter.
備註：平面圖所列的數字為以毫米標示之建築結構尺寸。

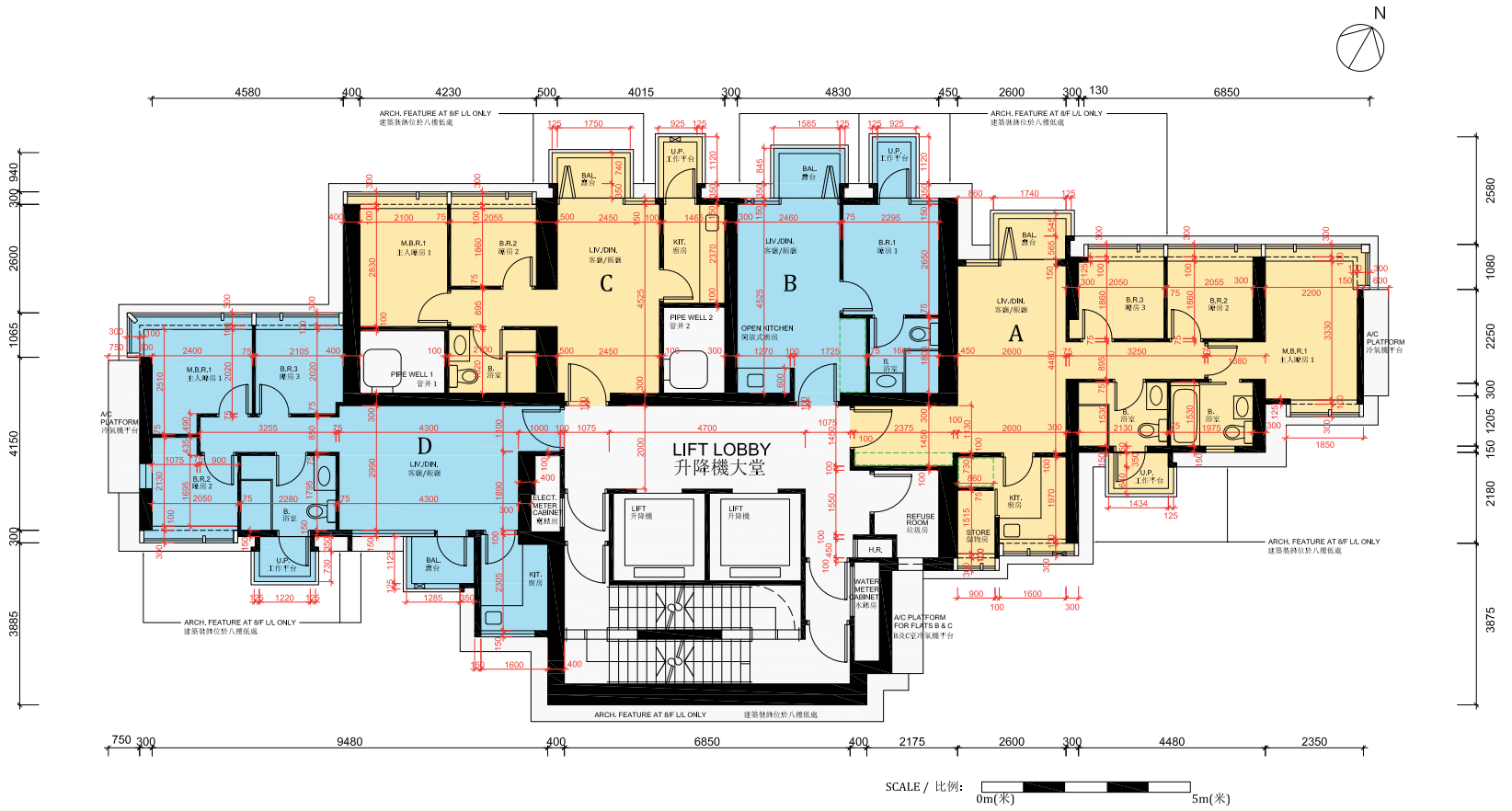
The internal areas of the residential properties on the upper floors will generally be slightly larger than those on the lower floors because of the reducing thickness of the structural walls on the upper floors.
因住宅物業的較高樓層的結構牆的厚度遞減，較高樓層的內部面積，一般比較低樓層的內部面積稍大。

Please refer to page 15 of this sales brochure for the remarks and legends of the terms and abbreviations for the floor plans of residential properties.
請參閱本售樓說明書第 15 頁為住宅物業樓面平面圖而設之備註及名詞及簡稱的圖例。

10 FLOOR PLANS OF RESIDENTIAL PROPERTIES IN THE DEVELOPMENT

發展項目的住宅物業的樓面平面圖

8/F - 11/F Floor Plan 8樓 - 11樓



Each Residential Property 每個住宅物業	Flat 室				
	Floor 樓層	A	B	C	D
Floor to Floor Height (mm) 層與層之間的高度 (毫米)	8/F-10/F 8樓-10樓	3150	3150	3150	3150
Thickness of Floor Slab (excluding plaster) (mm) 樓板 (不包括灰泥) 的厚度 (毫米)		150	175	150	150

Each Residential Property 每個住宅物業	Flat 室				
	Floor 樓層	A	B	C	D
Floor to Floor Height (mm) 層與層之間的高度 (毫米)	11/F 11樓	3150	3150	3150	2825, 3150
Thickness of Floor Slab (excluding plaster) (mm) 樓板 (不包括灰泥) 的厚度 (毫米)		150	175	150	150

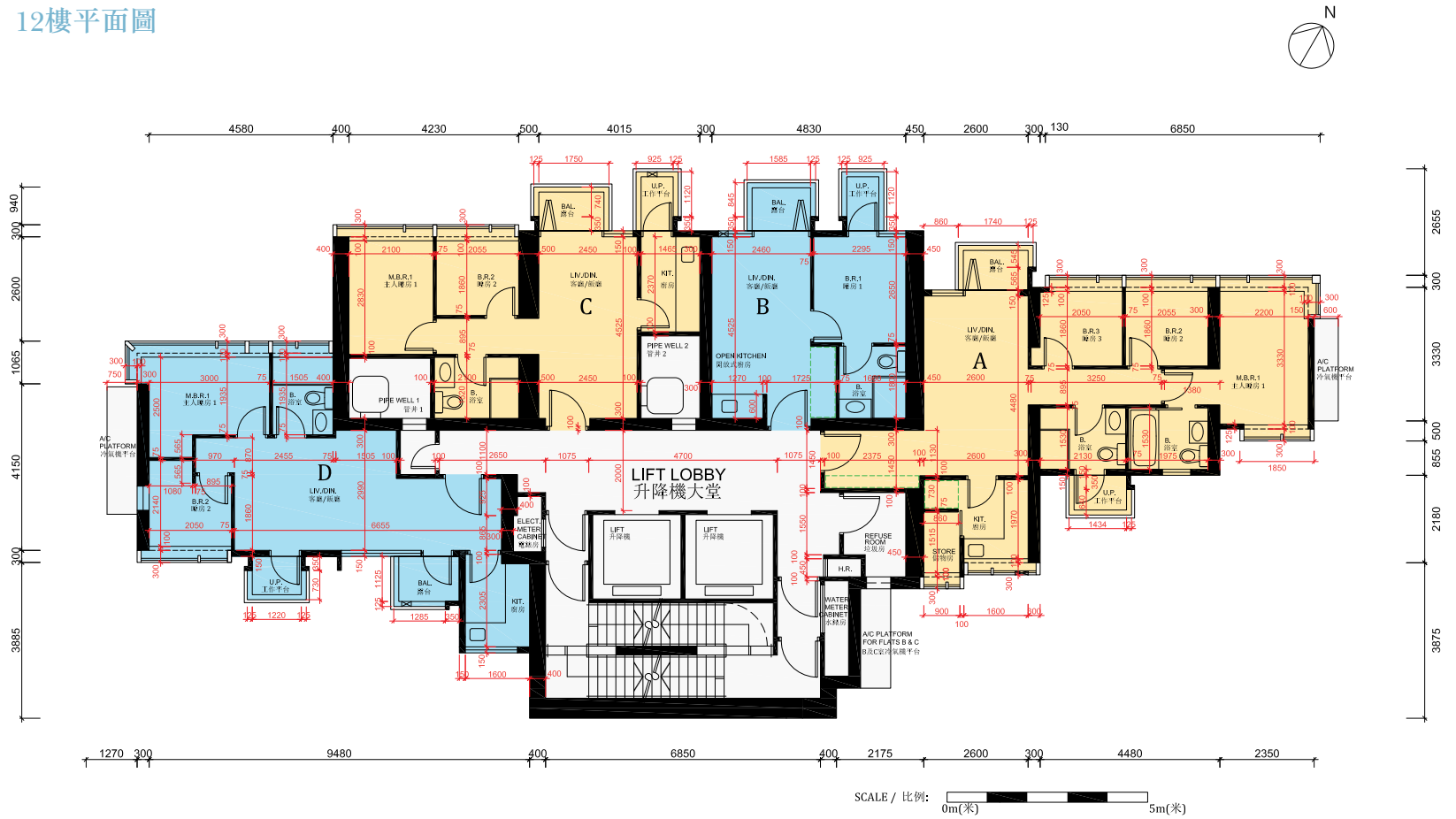
Notes: The dimensions in floor plans are all structural dimensions in millimeter.
備註：平面圖所列的數字為以毫米標示之建築結構尺寸。

The internal areas of the residential properties on the upper floors will generally be slightly larger than those on the lower floors because of the reducing thickness of the structural walls on the upper floors.
因住宅物業的較高樓層的結構牆的厚度遞減，較高樓層的內部面積，一般比較低樓層的內部面積稍大。

Please refer to page 15 of this sales brochure for the remarks and legends of the terms and abbreviations for the floor plans of residential properties.
請參閱本售樓說明書第 15 頁為住宅物業樓面平面圖而設之備註及名詞及簡稱的圖例。

10 FLOOR PLANS OF RESIDENTIAL PROPERTIES IN THE DEVELOPMENT 發展項目的住宅物業的樓面平面圖

12/F Floor Plan 12樓平面圖



Each Residential Property 每個住宅物業	Flat 室	A	B	C	D
	Floor 樓層				
Floor to Floor Height (mm) 層與層之間的高度 (毫米)	12/F 12 樓	3150	3150	3150	3150
Thickness of Floor Slab (excluding plaster) (mm) 樓板 (不包括灰泥) 的厚度 (毫米)		150	175	150	150, 225

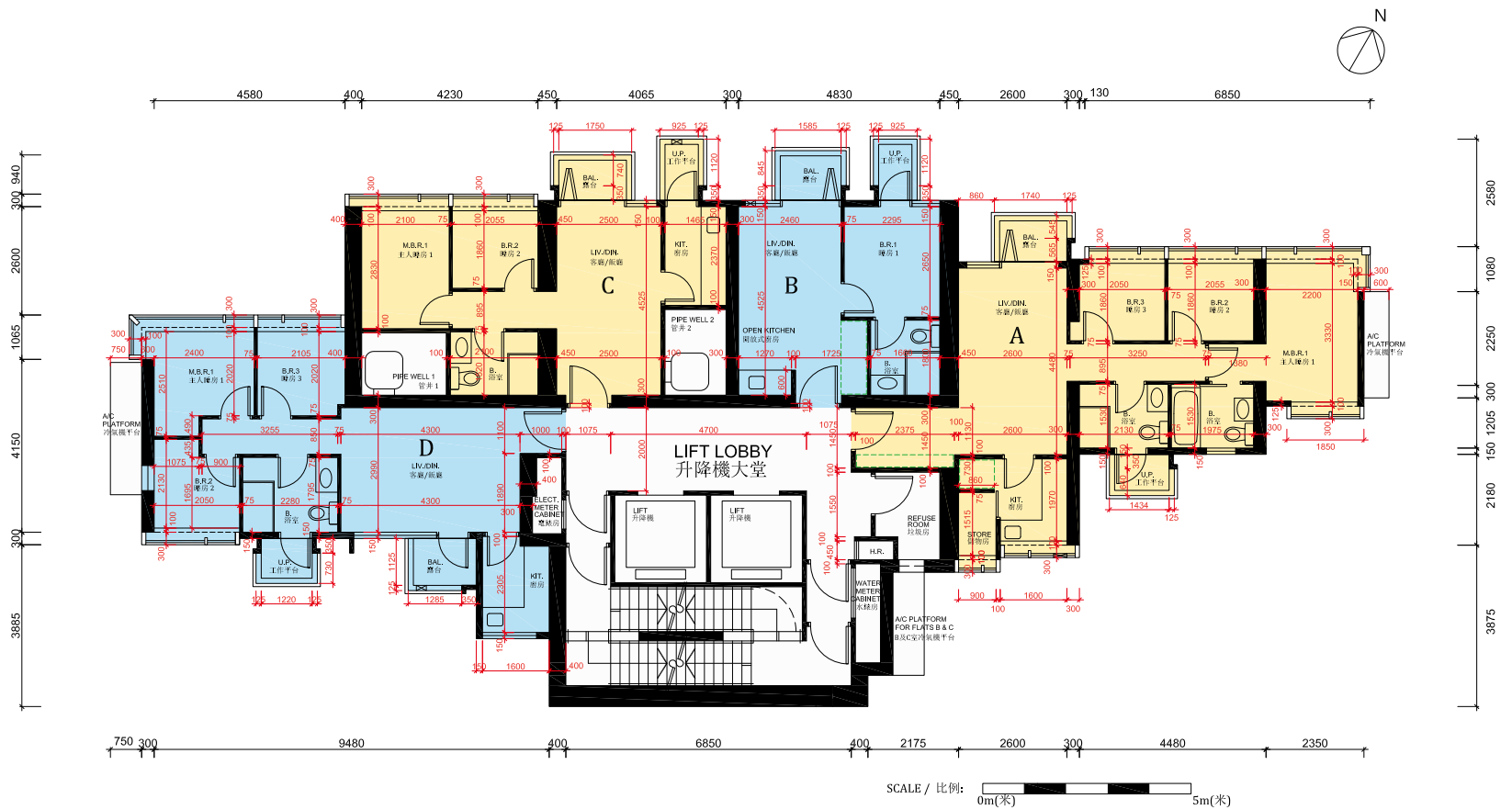
Notes: The dimensions in floor plans are all structural dimensions in millimeter.
備註：平面圖所列的數字為以毫米標示之建築結構尺寸。

The internal areas of the residential properties on the upper floors will generally be slightly larger than those on the lower floors because of the reducing thickness of the structural walls on the upper floors.
因住宅物業的較高樓層的結構牆的厚度遞減，較高樓層的內部面積，一般比較低樓層的內部面積稍大。

Please refer to page 15 of this sales brochure for the remarks and legends of the terms and abbreviations for the floor plans of residential properties.
請參閱本售樓說明書第 15 頁為住宅物業樓面平面圖而設之備註及名詞及簡稱的圖例。

10 FLOOR PLANS OF RESIDENTIAL PROPERTIES IN THE DEVELOPMENT 發展項目的住宅物業的樓面平面圖

15/F - 23/F Floor Plan
15樓 - 23樓平面圖



Each Residential Property 每個住宅物業	Flat 室				
	Floor 樓層	A	B	C	D
Floor to Floor Height (mm) 層與層之間的高度 (毫米)	15/F 15 樓	3150	3150	3150	2850, 3075, 3150
Thickness of Floor Slab (excluding plaster) (mm) 樓板 (不包括灰泥) 的厚度 (毫米)		150	175	150	150

Each Residential Property 每個住宅物業	Flat 室				
	Floor 樓層	A	B	C	D
Floor to Floor Height (mm) 層與層之間的高度 (毫米)	16/F-23/F 16 樓 -23 樓	3150	3150	3150	3150
Thickness of Floor Slab (excluding plaster) (mm) 樓板 (不包括灰泥) 的厚度 (毫米)		150	175	150	150

Notes: The dimensions in floor plans are all structural dimensions in millimeter.
備註：平面圖所列的數字為以毫米標示之建築結構尺寸。

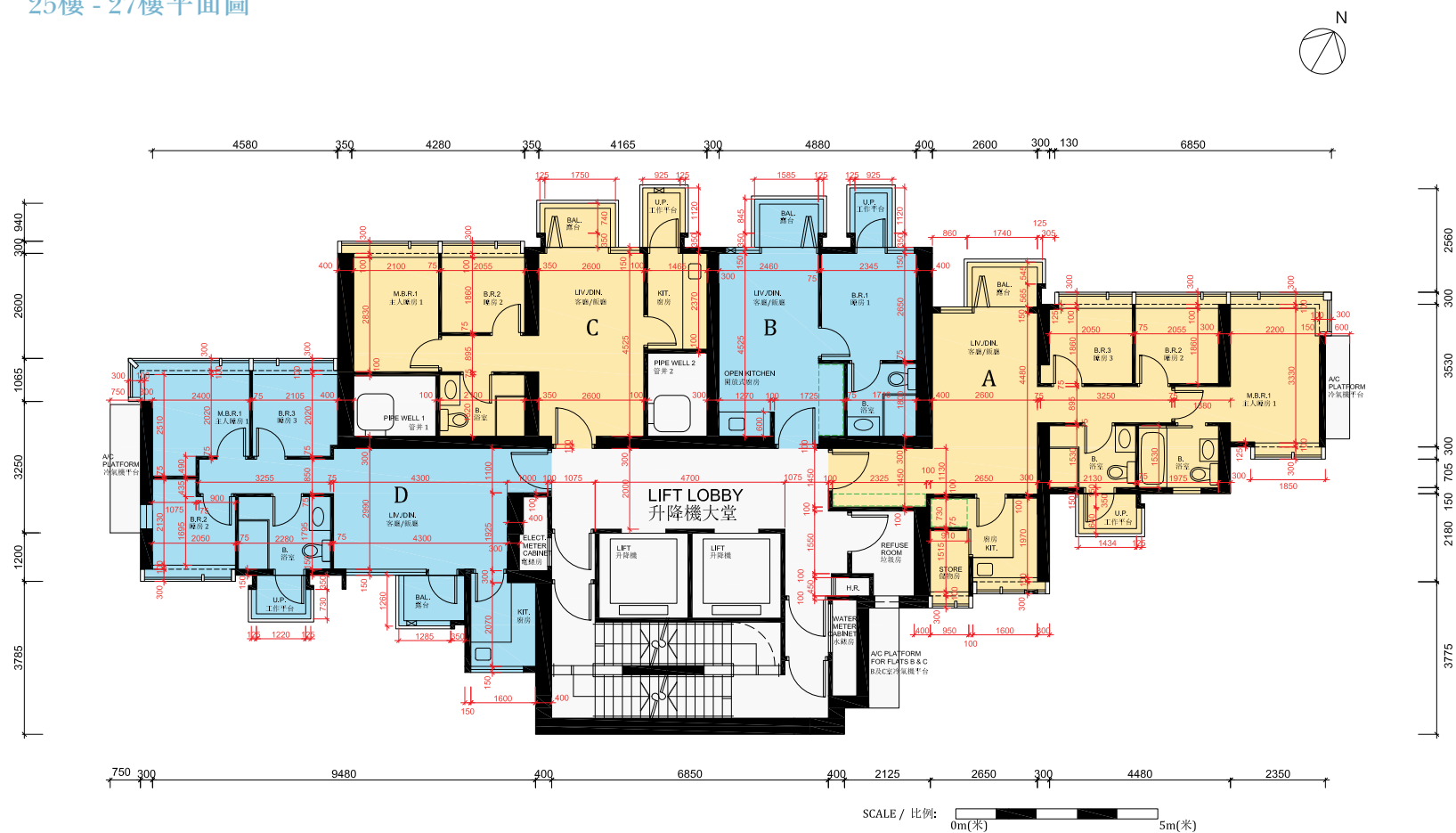
The internal areas of the residential properties on the upper floors will generally be slightly larger than those on the lower floors because of the reducing thickness of the structural walls on the upper floors.
因住宅物業的較高樓層的結構牆的厚度遞減，較高樓層的內部面積，一般比較低樓層的內部面積稍大。

Please refer to page 15 of this sales brochure for the remarks and legends of the terms and abbreviations for the floor plans of residential properties.
請參閱本售樓說明書第 15 頁為住宅物業樓面平面圖而設之備註及名詞及簡稱的圖例。

10 FLOOR PLANS OF RESIDENTIAL PROPERTIES IN THE DEVELOPMENT

發展項目的住宅物業的樓面平面圖

25/F - 27/F Floor Plan 25樓 - 27樓平面圖



Each Residential Property 每個住宅物業	Flat 室 Floor 樓層	A	B	C	D
Floor to Floor Height (mm) 層與層之間的高度 (毫米)	25/F-27/F 25樓-27樓	3150	3150	3150	3150
Thickness of Floor Slab (excluding plaster) (mm) 樓板 (不包括灰泥) 的厚度 (毫米)		150	175	150	150

Notes: The dimensions in floor plans are all structural dimensions in millimeter.
備註：平面圖所列的數字為以毫米標示之建築結構尺寸。

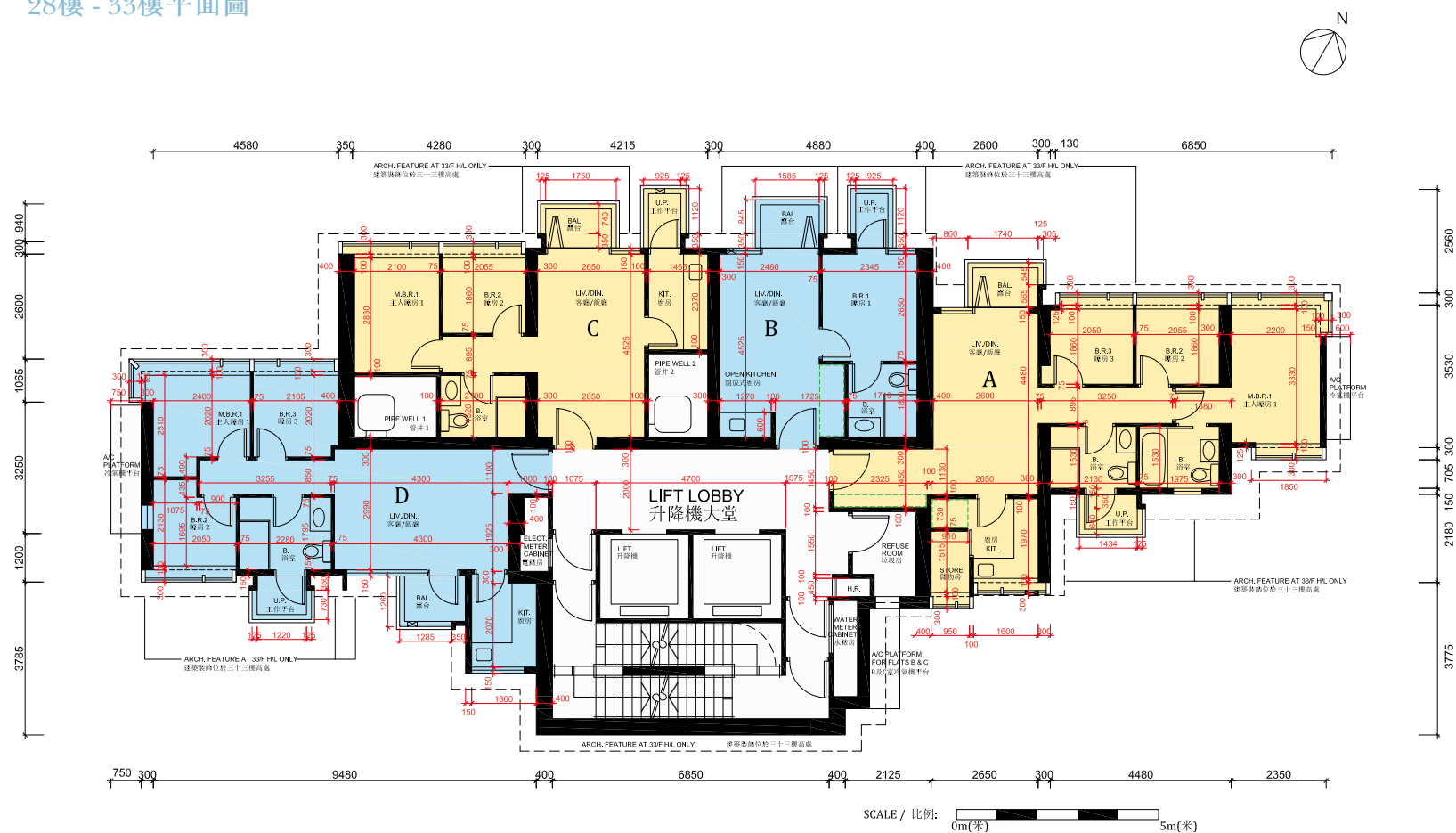
The internal areas of the residential properties on the upper floors will generally be slightly larger than those on the lower floors because of the reducing thickness of the structural walls on the upper floors.
因住宅物業的較高樓層的結構牆的厚度遞減，較高樓層的內部面積，一般比較低樓層的內部面積稍大。

Please refer to page 15 of this sales brochure for the remarks and legends of the terms and abbreviations for the floor plans of residential properties.
請參閱本售樓說明書第 15 頁為住宅物業樓面平面圖而設之備註及名詞及簡稱的圖例。

10 FLOOR PLANS OF RESIDENTIAL PROPERTIES IN THE DEVELOPMENT

發展項目的住宅物業的樓面平面圖

28/F - 33/F Floor Plan
28樓 - 33樓平面圖



Each Residential Property 每個住宅物業	Flat 室 Floor 樓層	A	B	C	D
Floor to Floor Height (mm) 層與層之間的高度 (毫米)	28/F-32/F 28樓 -32樓	3150	3150	3150	3150
Thickness of Floor Slab (excluding plaster) (mm) 樓板 (不包括灰泥) 的厚度 (毫米)		150	175	150	150

Each Residential Property 每個住宅物業	Flat 室 Floor 樓層	A	B	C	D
Floor to Floor Height (mm) 層與層之間的高度 (毫米)	33/F 33樓	3100, 3350, 3450	3220, 3450	3200, 3220, 3250,3450	3100, 3175, 3400, 3450
Thickness of Floor Slab (excluding plaster) (mm) 樓板 (不包括灰泥) 的厚度 (毫米)		150	175	175	175

Notes: The dimensions in floor plans are all structural dimensions in millimeter.
備註：平面圖所列的數字為以毫米標示之建築結構尺寸。

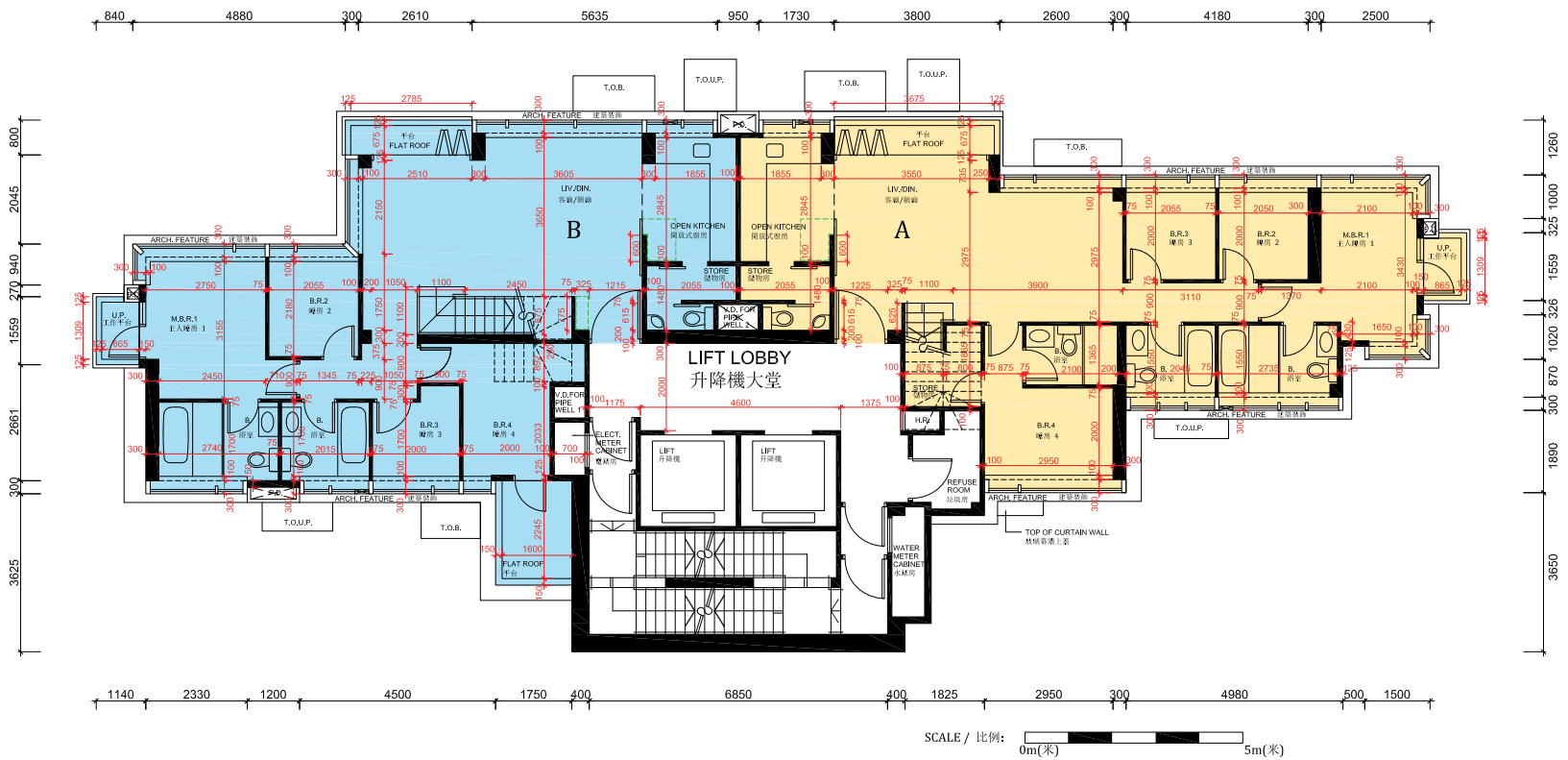
The internal areas of the residential properties on the upper floors will generally be slightly larger than those on the lower floors because of the reducing thickness of the structural walls on the upper floors.
因住宅物業的較高樓層的結構牆的厚度遞減，較高樓層的內部面積，一般比較低樓層的內部面積稍大。

Please refer to page 15 of this sales brochure for the remarks and legends of the terms and abbreviations for the floor plans of residential properties.
請參閱本售樓說明書第 15 頁為住宅物業樓面平面圖而設之備註及名詞及簡稱的圖例。

10 FLOOR PLANS OF RESIDENTIAL PROPERTIES IN THE DEVELOPMENT

發展項目的住宅物業的樓面平面圖

35/F Floor Plan 35樓平面圖



Each Residential Property 每個住宅物業	Flat 室 Floor 樓層	A	B
Floor to Floor Height (mm) 層與層之間的高度 (毫米)	35/F 35 樓	3500	3500
Thickness of Floor Slab (excluding plaster) (mm) 樓板 (不包括灰泥) 的厚度 (毫米)		150, 175, 225	225

Notes: The dimensions in floor plans are all structural dimensions in millimeter.

備註：平面圖所列的數字為以毫米標示之建築結構尺寸。

The internal areas of the residential properties on the upper floors will generally be slightly larger than those on the lower floors because of the reducing thickness of the structural walls on the upper floors.

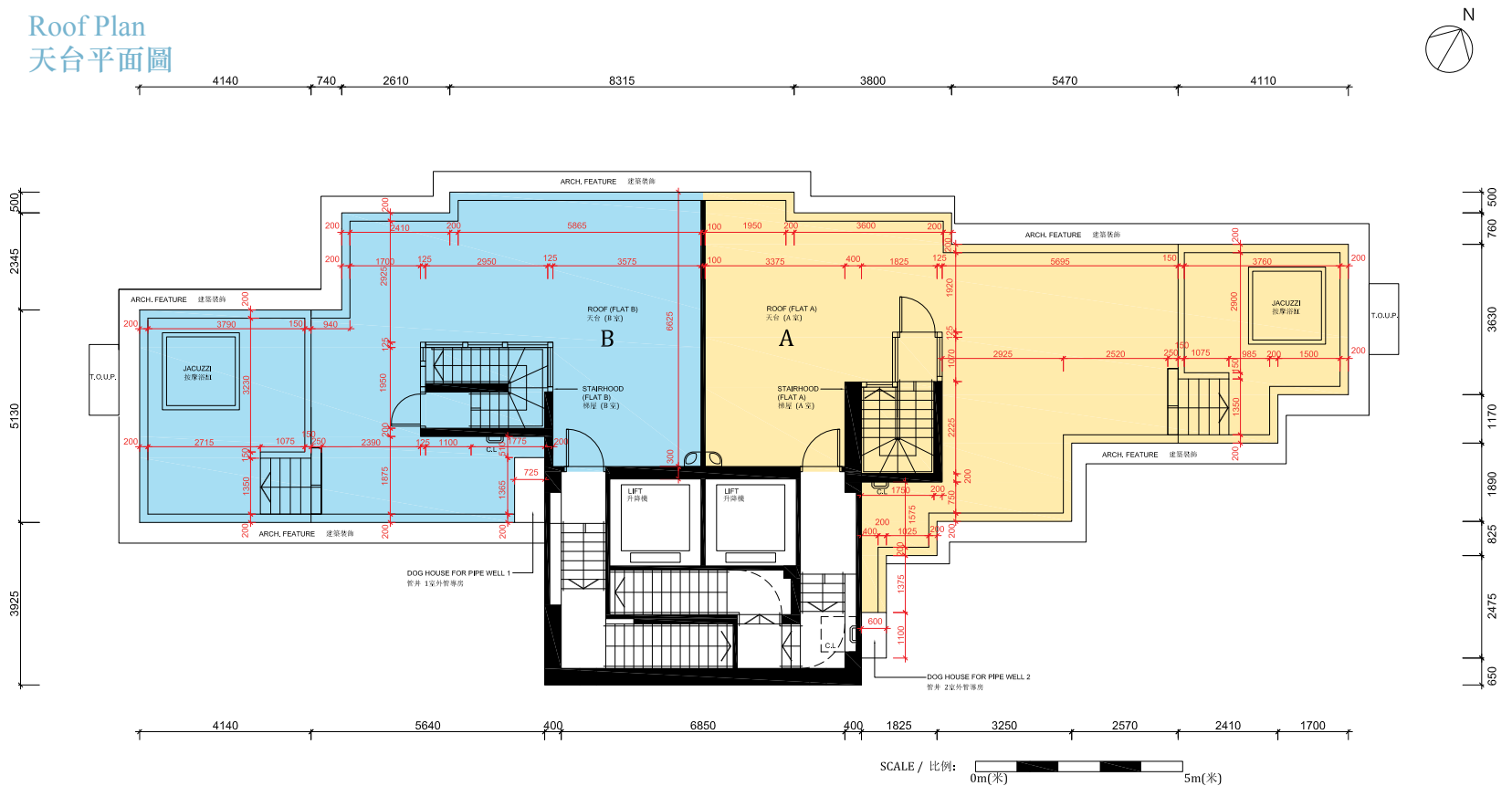
因住宅物業的較高樓層的結構牆的厚度遞減，較高樓層的內部面積，一般比較低樓層的內部面積稍大。

Please refer to page 15 of this sales brochure for the remarks and legends of the terms and abbreviations for the floor plans of residential properties.

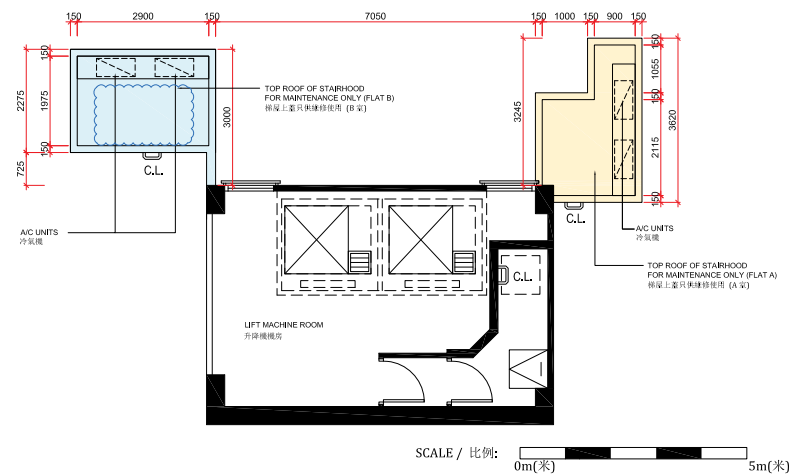
請參閱本售樓說明書第 15 頁為住宅物業樓面平面圖而設之備註及名詞及簡稱的圖例。

10 FLOOR PLANS OF RESIDENTIAL PROPERTIES IN THE DEVELOPMENT 發展項目的住宅物業的樓面平面圖

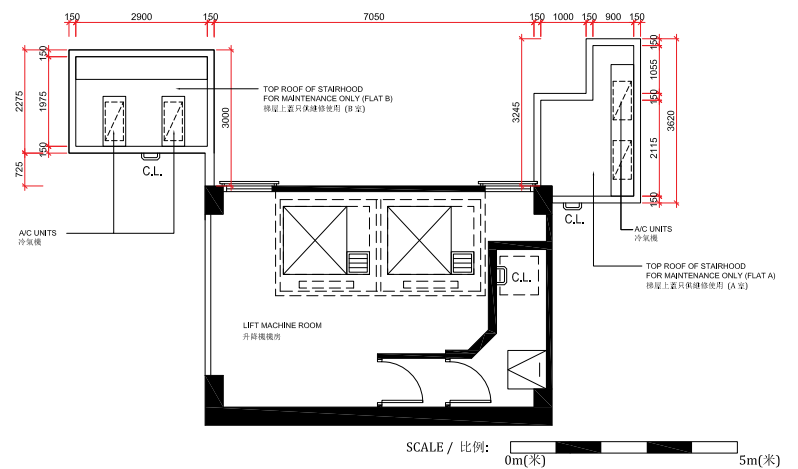
Roof Plan
天台平面圖



Lift Machine Room Plan
升降機房平面圖



As-is Lift Machine Room Plan
升降機房現狀平面圖



Each Residential Property 每個住宅物業	Flat 室	A	B
Floor to Floor Height (mm) 層與層之間的高度 (毫米)	Roof 天台	N/A 不適用	N/A 不適用
Thickness of Floor Slab (excluding plaster) (mm) 樓板 (不包括灰泥) 的厚度 (毫米)	Roof 天台	N/A 不適用	N/A 不適用

Notes: The dimensions in floor plans are all structural dimensions in millimeter.
備註：平面圖所列的數字為以毫米標示之建築結構尺寸。

The area of top roof of stairhood is not included in the area of roof / flat roof.
梯屋上蓋的面積不計算於天台 / 平台面積之內。

The internal areas of the residential properties on the upper floors will generally be slightly larger than those on the lower floors because of the reducing thickness of the structural walls on the upper floors.
因住宅物業的較高樓層的結構牆的厚度遞減，較高樓層的內部面積，一般比較低樓層的內部面積稍大。

Top roof of stairhood of Flat B on 35/F has been altered by way of minor works or exempted works under the Buildings Ordinance after the completion of the Development. The approximate location of the alteration is indicated with curved lines in blue on this floor plan. Alteration works for top of stairhood of Flat B on 35/F includes erection of 2 nos. of concrete plinths for air-conditioners.

35樓B室之梯屋上蓋在發展項目落成後進行小型工程或獲《建築物條例》豁免的工程而有所改動。該等改動的大概位置於本樓面平面圖中已用藍色曲線作出標示。35樓B室梯屋上蓋改動工程包括豎設2個混凝土基座支承冷氣機。

Please refer to page 15 of this sales brochure for the remarks and legends of the terms and abbreviations for the floor plans of residential properties.
請參閱本售樓說明書第15頁為住宅物業樓面平面圖而設之備註及名詞及簡稱的圖例。