

--- Boundary line of the Development 發展項目的邊界

Adopted from Part of the Approved Tung Chung Town Centre Area Outline Zoning Plan No. S/I-TCTC/22 gazetted on 17th February, 2017.  
 摘錄自憲報公布日期為2017年2月17日之東涌市中心地區分區計劃大綱核准圖編號S/I-TCTC/22。

The map, prepared by the Planning Department under the direction of the Town Planning Board, is reproduced with the permission of the Director of Lands. © The Government of Hong Kong SAR.

地圖為規劃署遵照城市規劃委員會指示擬備，版權屬香港特別行政區政府，經地政總署准許複印。

Notation 圖例

Zones 地帶

<b>C</b>	Commercial 商業
<b>R(A)</b>	Residential (group A) 住宅(甲類)
<b>R(B)</b>	Residential (group B) 住宅(乙類)
<b>G/C</b>	Government, institution or community 政府、機構或社區

<b>O</b>	Open space 休憩用地
<b>OU</b>	Other specified uses 其他指定用途
<b>GB</b>	Green belt 綠化地帶

Communications 交通

	Railway and station 鐵路及車站
	Railway and station (underground) 鐵路及車站(地下)
	Major road and junction 主要道路及路口
	Elevated road 高架道路

Miscellaneous 其他

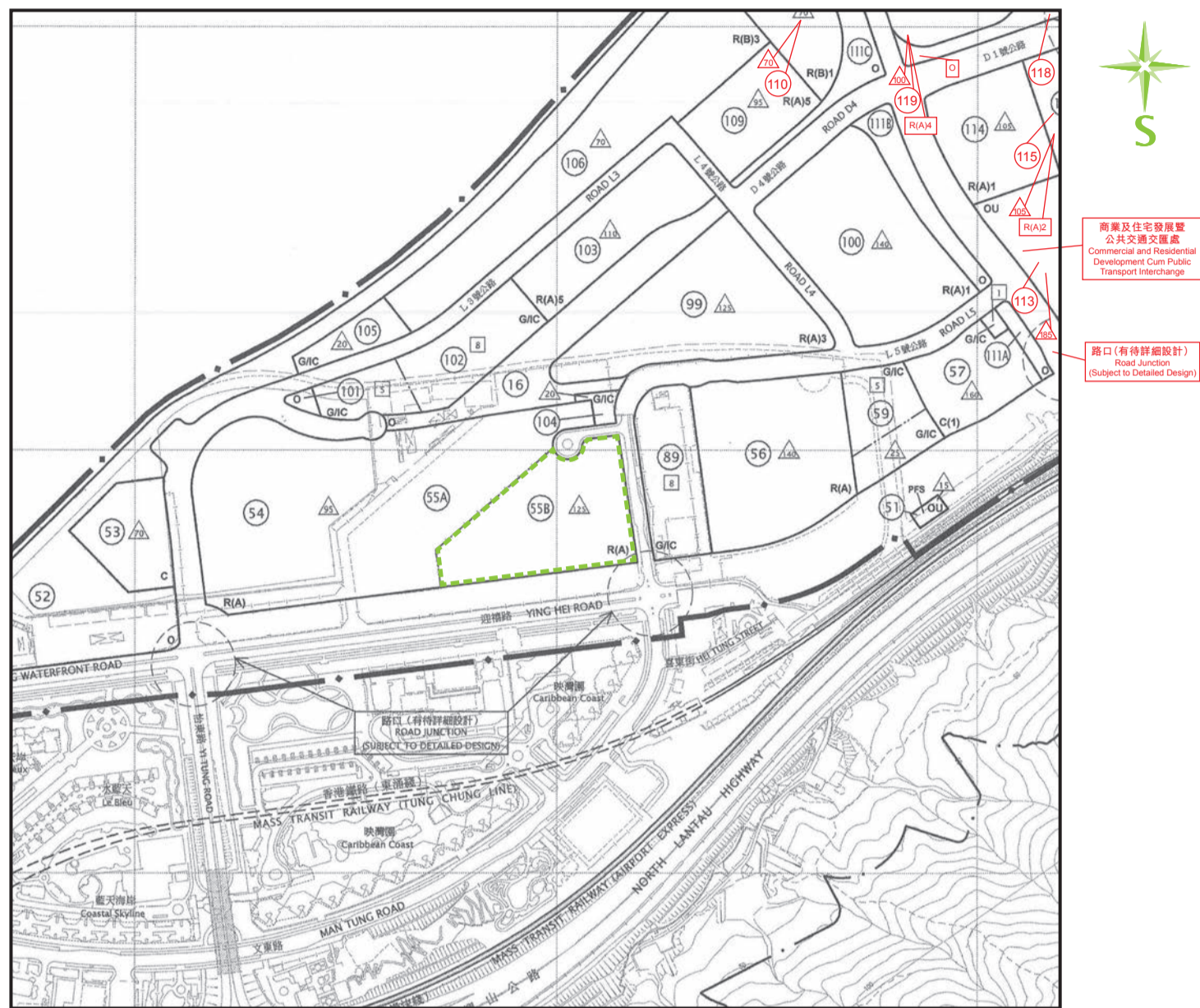
	Boundary of planning scheme 規劃範圍界線		Planning area number 規劃區編號		P F S Petrol filling station 加油站
	Maximum building height (In metres above principal datum) 最高建築物高度(在主水平基準上若干米)				

Due to technical reasons (such as the shape of the Development), the Outline Zoning Plan has shown more than the area required under the Residential Properties (First-hand Sales) Ordinance.

因技術原因(例如發展項目之形狀)，分區計劃大綱圖所顯示之範圍多於《一手住宅物業銷售條例》所要求者。



# Outline zoning plan relating to the Development 關於發展項目分區計劃大綱圖



-- Boundary line of the Development 發展項目的邊界

Adopted from Part of the Approved Tung Chung Extension Area Outline Zoning Plan No. S/I-TCE/2 gazetted on 17th February, 2017.

摘錄自憲報公布日期為2017年2月17日之東涌擴展區分區計劃大綱核准圖編號S/I-TCE/2。

The map, prepared by the Planning Department under the direction of the Town Planning Board, is reproduced with the permission of the Director of Lands. © The Government of Hong Kong SAR.

地圖為規劃署遵照城市規劃委員會指示擬備，版權屬香港特別行政區政府，經地政總署准許複印。

## Notation 圖例

### Zones 地帶

<b>C</b>	Commercial 商業
<b>R(A)</b>	Residential (group A) 住宅(甲類)
<b>R(B)</b>	Residential (group B) 住宅(乙類)
<b>G/C</b>	Government, institution or community 政府、機構或社區

<b>O</b>	Open space 休憩用地
<b>OU</b>	Other specified uses 其他指定用途
<b>GB</b>	Green belt 綠化地帶

### Communications 交通

	Railway and station 鐵路及車站
	Railway and station (underground) 鐵路及車站(地下)
	Major road and junction 主要道路及路口
	Elevated road 高架道路

### Miscellaneous 其他

Boundary of planning scheme  
規劃範圍界線

Planning area number  
規劃區編號

**P F S** Petrol filling station  
加油站

Building Height Control Zone Boundary  
建築物高度管制區界線

Maximum building height (In metres above principal datum)  
最高建築物高度(在主水平基準上若干米)

Due to technical reasons (such as the shape of the Development), the Outline Zoning Plan has shown more than the area required under the Residential Properties (First-hand Sales) Ordinance.

因技術原因(例如發展項目之形狀)，分區計劃大綱圖所顯示之範圍多於《一手住宅物業銷售條例》所要求者。