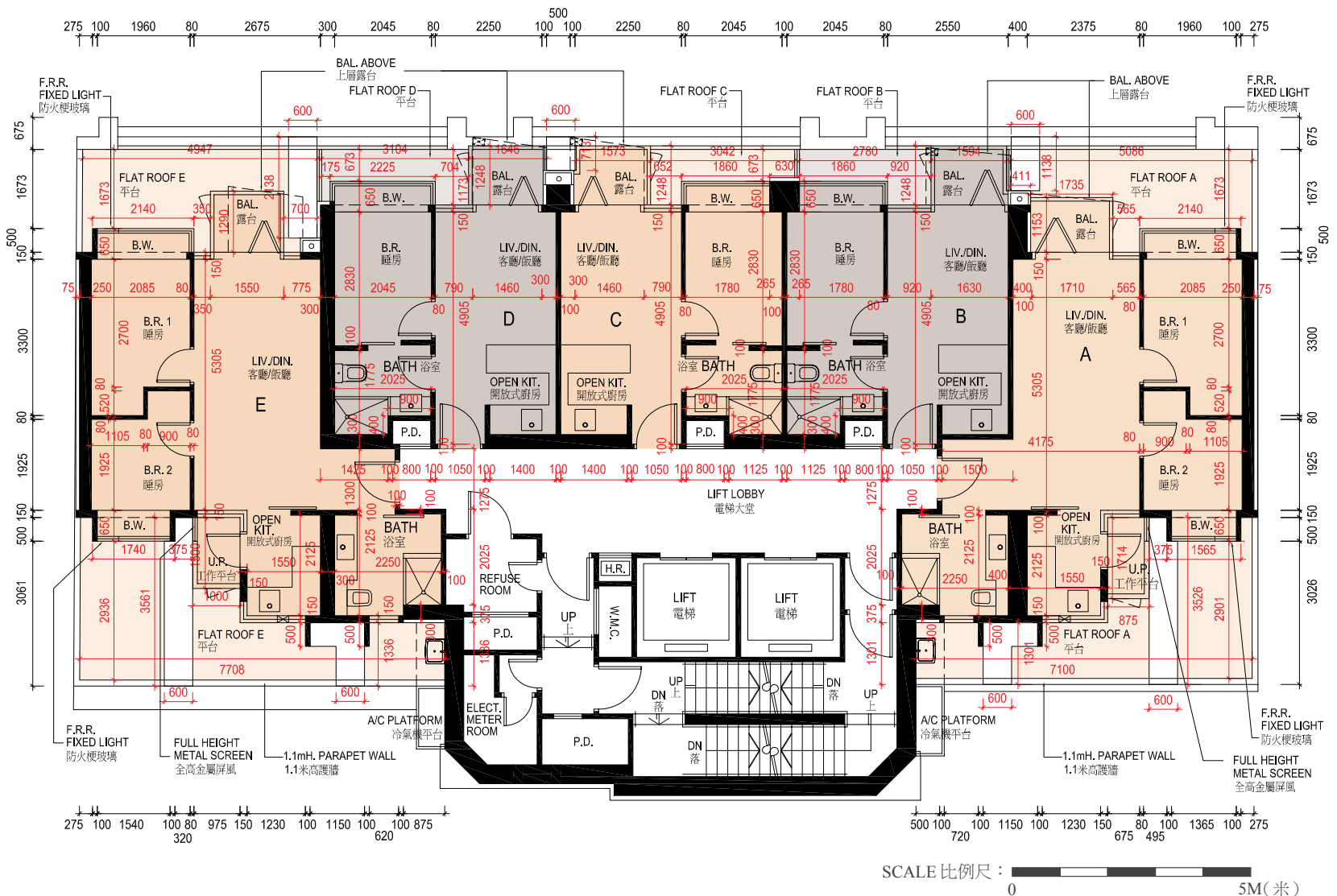


10 FLOOR PLANS OF RESIDENTIAL PROPERTIES IN THE DEVELOPMENT 發展項目的住宅物業的樓面平面圖

3/F Floor Plan 3樓單位平面圖



The thickness of the floor slabs (excluding plaster) of each residential unit is:

Unit A & E : 150 mm and 175 mm

Unit B, C & D: 175 mm

The floor-to-floor height of each residential unit is:

3.15 m

The internal areas of the residential properties on the upper floors will generally be slightly larger than those on the lower floors because of the reducing thickness of the structural walls on the upper floors.

B.R. = Bedroom 睡房

B.W. = Bay Window 窗台

ELECT. METER ROOM = Electric Meter Room 電錶房

H.R. = Hose Reel 消防喉轆

P.D. = Pipe Duct 管槽

REFUSE ROOM 垃圾房

Remarks:

1. There are ceiling bulkheads and/ or sunken slabs at living/ dining rooms, bedrooms, corridors, bathrooms, store rooms and/ or kitchens of some residential units for the air conditioning system and/ or M&E services. There are exposed pipes/ ductings for air conditioning system and/ or M&E services within some store rooms.
2. The dimensions in floor plans are all structural dimensions in millimeter.
3. Blank areas on flat roof are common areas for building facility maintenance.

每個住宅單位的樓板(不包括灰泥)的厚度為:

A 及 E 單位 : 150毫米及175毫米

B、C 及 D 單位: 175毫米

每個住宅單位的層與層之間的高度為:

3.15米

因住宅物業的較高樓層的結構牆的厚度遞減, 較高樓層的內部面積, 一般比較低樓層的內部面積稍大。

U.P. = Utility Platform 工作平台

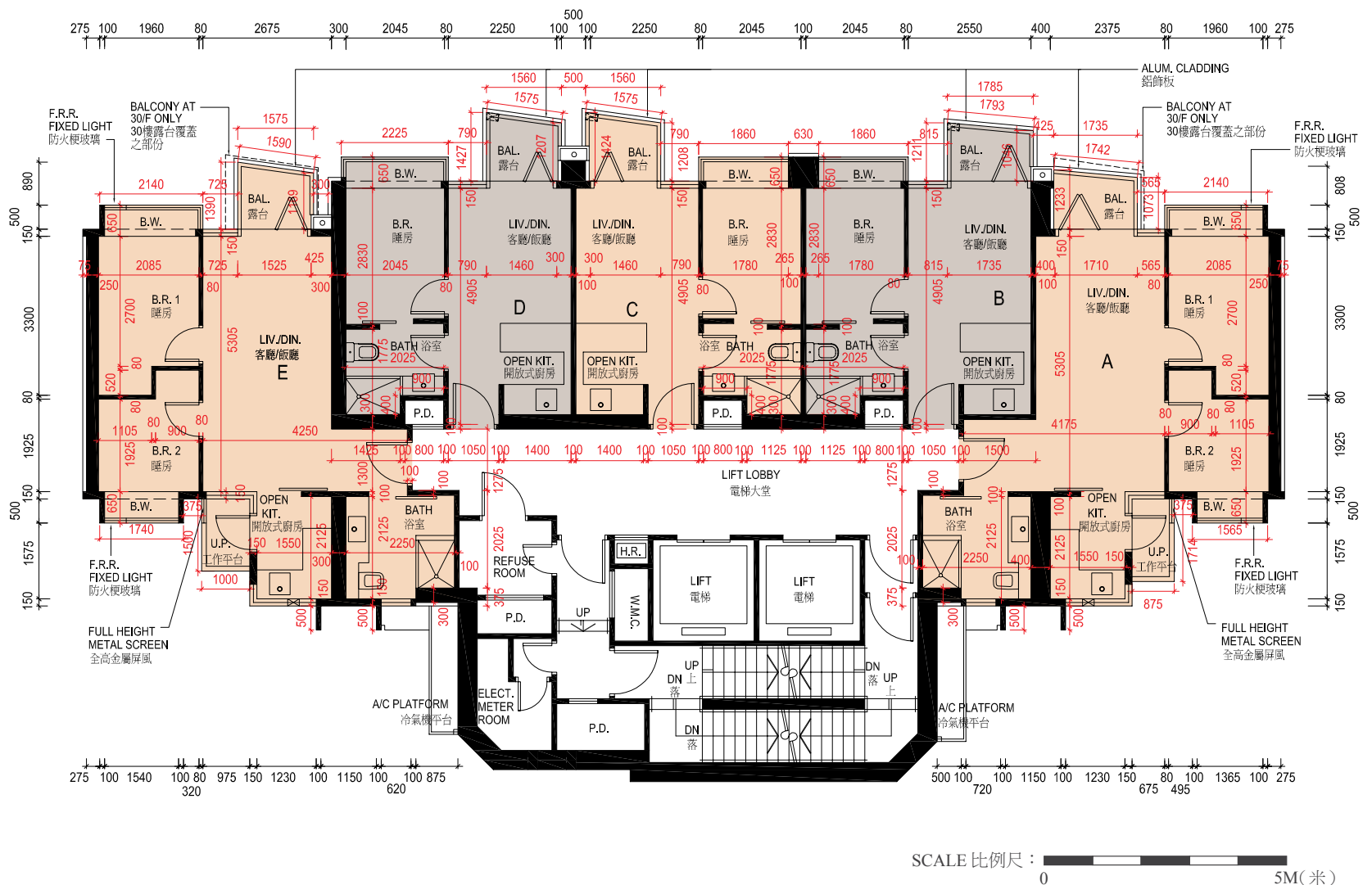
W.M.C. = Water Meter Cabinet 水錶櫃

備註:

1. 部份住宅單位客/飯廳、睡房、走廊、浴室、儲物室及/或廚房天花有跌級樓板(用以安裝機電設備)及假天花內裝置冷氣喉管及/或其他機電設備。部份儲物室內設有冷氣/機電設備之外露喉管/管道。
2. 平面圖所列之數字為以毫米標示之建築結構尺寸。
3. 平台空白位置為供維修大廈設備使用的公用地方。

10 FLOOR PLANS OF RESIDENTIAL PROPERTIES IN THE DEVELOPMENT 發展項目的住宅物業的樓面平面圖

5/F - 29/F Floor Plan 5樓 - 29樓單位平面圖



The thickness of the floor slabs (excluding plaster) of each residential unit is:

Unit A & E : 150 mm and 175 mm
Unit B, C & D: 175 mm

The floor-to-floor height of 5/F to 28/F each residential unit is:
3.15 m

The floor-to-floor height of 29/F each residential unit is:

Unit A : 3.05 m, 3.15 m, 3.25 m and 3.5 m
Unit B & D : 3.325 m and 3.5 m
Unit C : 3.15 m and 3.5 m
Unit E : 3.05 m, 3.2 m, 3.22 m, 3.45 m and 3.5 m

The internal areas of the residential properties on the upper floors will generally be slightly larger than those on the lower floors because of the reducing thickness of the structural walls on the upper floors.

B.R. = Bedroom 睡房
B.W. = Bay Window 窗台
ELECT. METER ROOM = Electric Meter Room 電錶房
H.R. = Hose Reel 消防喉轆

Remarks:

- There are ceiling bulkheads and/ or sunken slabs at living/ dining rooms, bedrooms, corridors, bathrooms, store rooms and/ or kitchens of some residential units for the air conditioning system and/ or M&E services. There are exposed pipes/ ductings for air conditioning system and/ or M&E services within some store rooms.
- The dimensions in floor plans are all structural dimensions in millimeter.

每個住宅單位的樓板 (不包括灰泥) 的厚度為:

A 及 E 單位 : 150毫米及175毫米
B、C 及 D 單位 : 175毫米

5樓至28樓每個住宅單位的層與層之間的高度為:
3.15米

29樓每個住宅單位的層與層之間的高度為:

A 單位 : 3.05米、3.15米、3.25米及3.5米
B 及 D 單位 : 3.325米及3.5米
C 單位 : 3.15米及3.5米
E 單位 : 3.05米、3.2米、3.22米、3.45米及3.5米

因住宅物業的較高樓層的結構牆的厚度遞減, 較高樓層的內部面積, 一般比較低樓層的內部面積稍大。

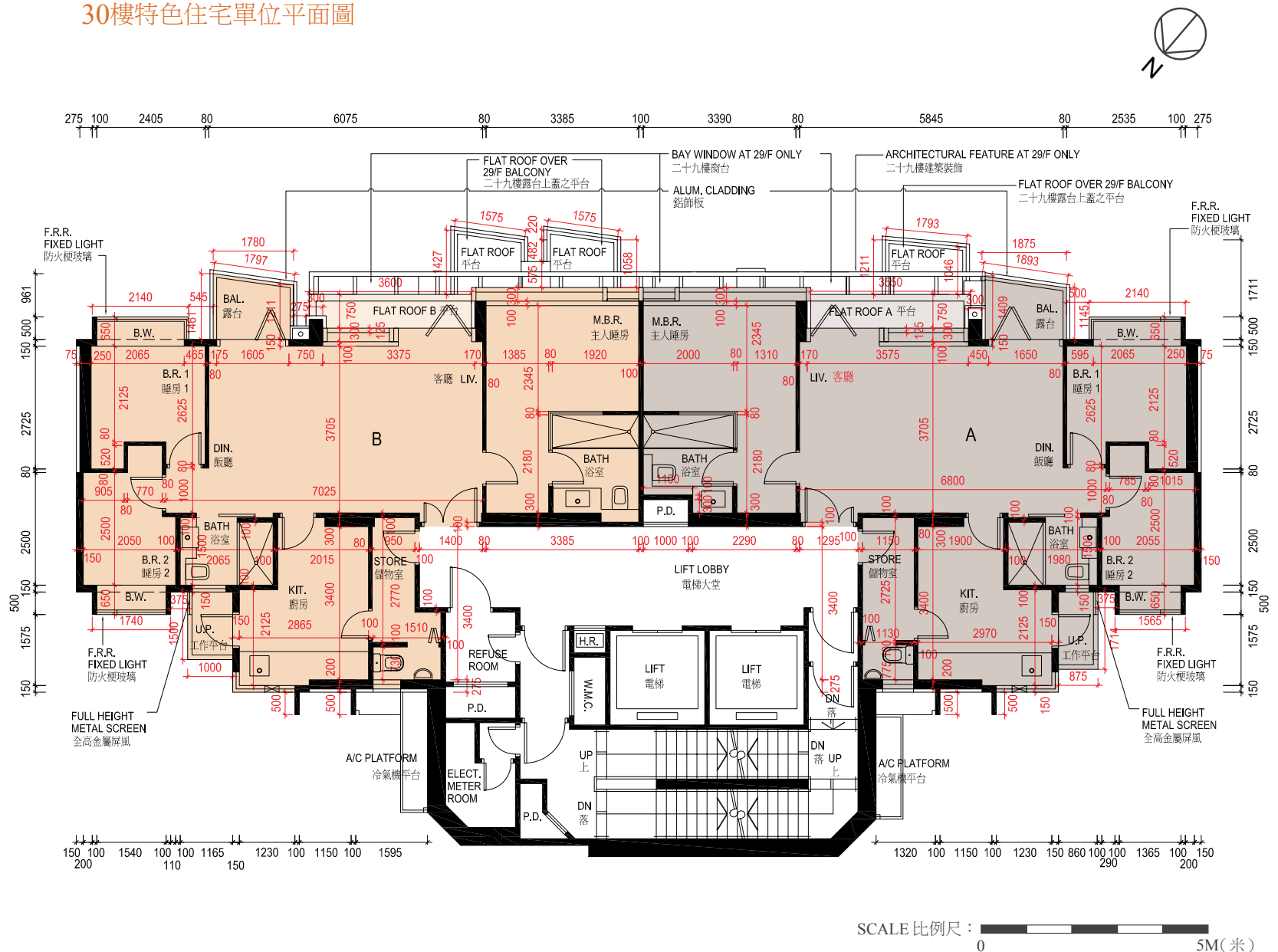
P.D. = Pipe Duct 管槽
REFUSE ROOM 垃圾房
U.P. = Utility Platform 工作平台
W.M.C. = Water Meter Cabinet 水錶櫃

備註:

- 部份住宅單位客/飯廳、睡房、走廊、浴室、儲物室及/或廚房天花有跌級樓板 (用以安裝機電設備) 及假天花內裝置冷氣喉管及/或其他機電設備。部份儲物室內設有冷氣/機電設備之外露喉管/管道。
- 平面圖所列之數字為以毫米標示之建築結構尺寸。

10 FLOOR PLANS OF RESIDENTIAL PROPERTIES IN THE DEVELOPMENT 發展項目的住宅物業的樓面平面圖

30/F Special Unit Floor Plan 30樓特色住宅單位平面圖



The thickness of the floor slabs (excluding plaster) of each residential unit is:
150 mm, 175 mm and 200 mm

The floor-to-floor height of each residential unit is:
Unit A: 3.05 m, 3.2 m, 3.45 m and 3.5 m
Unit B: 3.05 m, 3.2 m, 3.25 m and 3.5 m

The internal areas of the residential properties on the upper floors will generally be slightly larger than those on the lower floors because of the reducing thickness of the structural walls on the upper floors.

B.R. = Bedroom 睡房
B.W. = Bay Window 窗台
ELECT. METER ROOM = Electric Meter Room 電錶房
H.R. = Hose Reel 消防喉輻
M.B.R. = Master Bedroom 主人睡房
P.D. = Pipe Duct 管槽
REFUSE ROOM 垃圾房
STORE = STORE ROOM 儲物室

Remarks:

- There are ceiling bulkheads and/ or sunken slabs at living/ dining rooms, bedrooms, corridors, bathrooms, store rooms and/ or kitchens of some residential units for the air conditioning system and/ or M&E services. There are exposed pipes/ ductings for air conditioning system and/ or M&E services within some store rooms.
- The dimensions in floor plans are all structural dimensions in millimeter.

每個住宅單位的樓板 (不包括灰泥) 的厚度為:
150毫米、175毫米及200毫米

每個住宅單位的層與層之間的高度為:
A 單位: 3.05米、3.2米、3.45米及3.5米
B 單位: 3.05米、3.2米、3.25米及3.5米

因住宅物業的較高樓層的結構牆的厚度遞減, 較高樓層的內部面積, 一般比較低樓層的內部面積稍大。

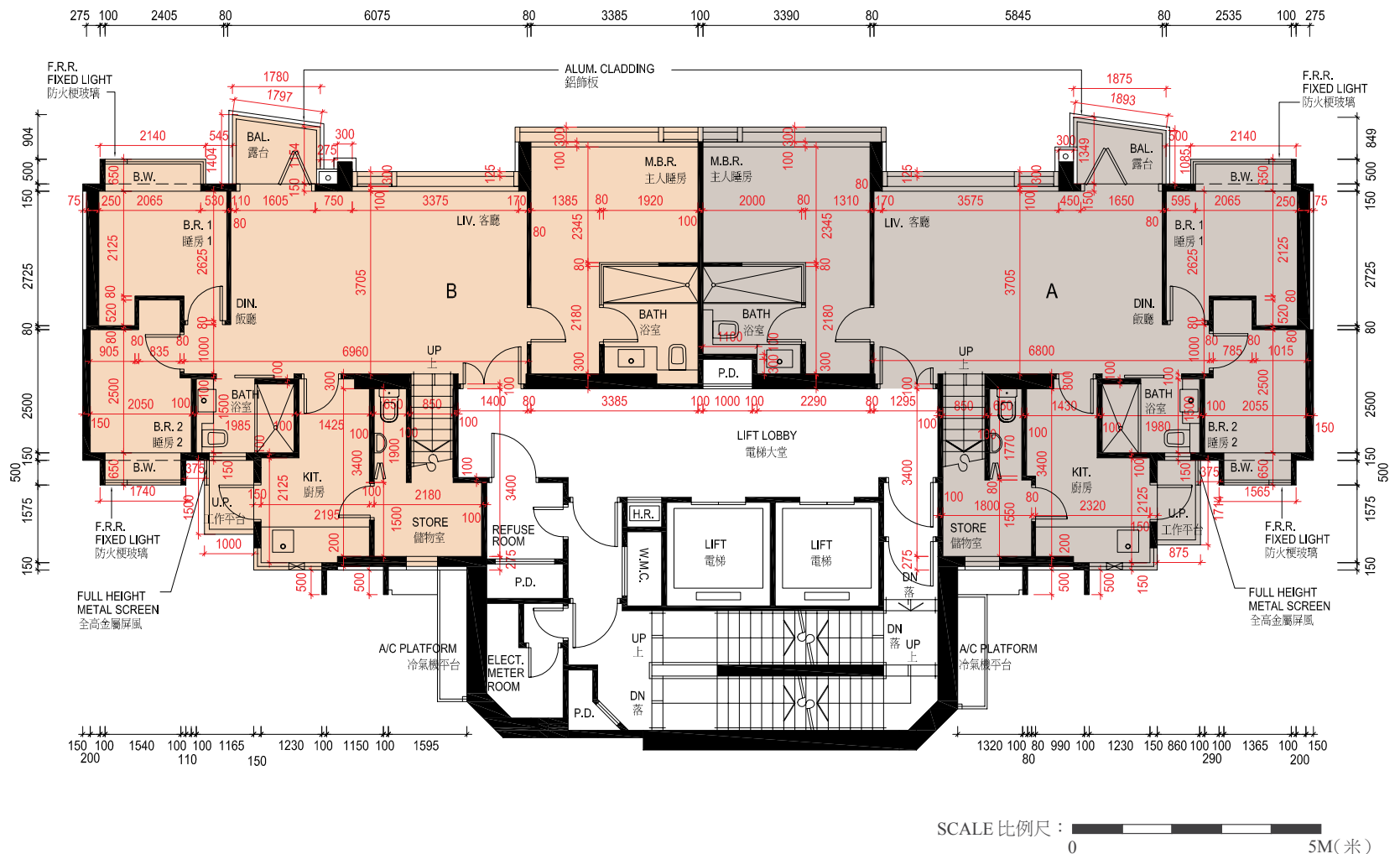
U.P. = Utility Platform 工作平台
W.M.C. = Water Meter Cabinet 水錶櫃

備註:

- 部份住宅單位客/飯廳、睡房、走廊、浴室、儲物室及/或廚房天花有跌級樓板 (用以安裝機電設備) 及假天花內裝置冷氣喉管及/或其他機電設備。部份儲物室內設有冷氣/機電設備之外露喉管/管道。
- 平面圖所列之數字為以毫米標示之建築結構尺寸。

10 FLOOR PLANS OF RESIDENTIAL PROPERTIES IN THE DEVELOPMENT 發展項目的住宅物業的樓面平面圖

31/F Special Unit Floor Plan 31樓特色住宅單位平面圖



The thickness of the floor slabs (excluding plaster) of each residential unit is:
150 mm, 175 mm and 200 mm

The floor-to-floor height of each residential unit is:
3.5 m

The internal areas of the residential properties on the upper floors will generally be slightly larger than those on the lower floors because of the reducing thickness of the structural walls on the upper floors.

- B.R. = Bedroom 睡房
- B.W. = Bay Window 窗台
- ELECT. METER ROOM = Electric Meter Room 電錶房
- H.R. = Hose Reel 消防喉轆
- M.B.R. = Master Bedroom 主人睡房
- P.D. = Pipe Duct 管槽
- REFUSE ROOM 垃圾房
- STORE = STORE ROOM 儲物室
- U.P. = Utility Platform 工作平台
- W.M.C. = Water Meter Cabinet 水錶櫃

Remarks:

1. There are ceiling bulkheads and/ or sunken slabs at living/ dining rooms, bedrooms, corridors, bathrooms, store rooms and/ or kitchens of some residential units for the air conditioning system and/ or M&E services. There are exposed pipes/ ductings for air conditioning system and/ or M&E services within some store rooms.
2. The dimensions in floor plans are all structural dimensions in millimeter.

每個住宅單位的樓板 (不包括灰泥) 的厚度為：
150毫米、175 毫米及200毫米

每個住宅單位的層與層之間的高度為：
3.5米

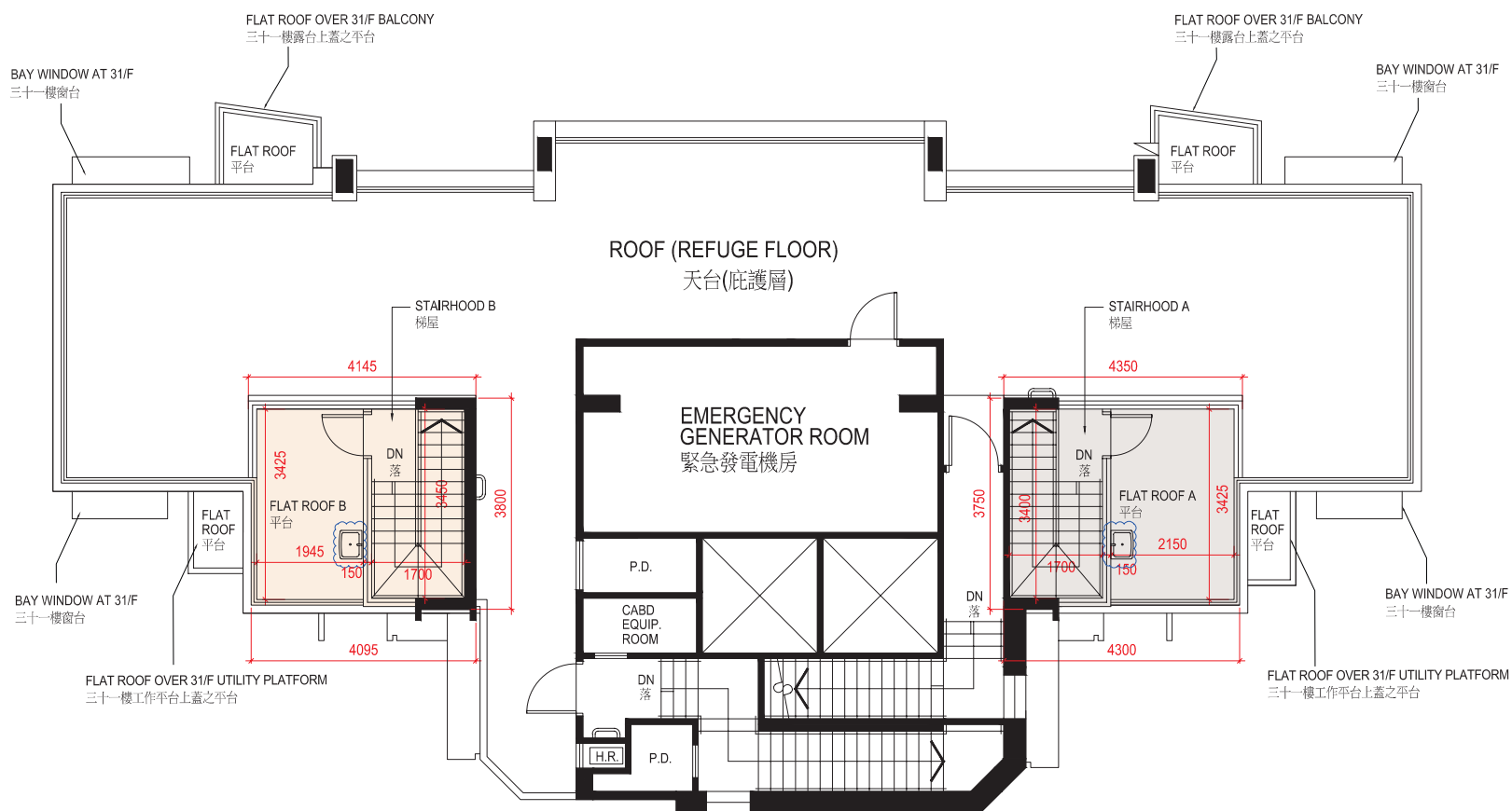
因住宅物業的較高樓層的結構牆的厚度遞減，較高樓層的內部面積，一般比較低樓層的內部面積稍大。

備註：

1. 部份住宅單位客/飯廳、睡房、走廊、浴室、儲物室及/或廚房天花有跌級樓板 (用以安裝機電設備) 及假天花內裝置冷氣喉管及/或其他機電設備。部份儲物室內設有冷氣/機電設備之外露喉管/管道。
2. 平面圖所列之數字為以毫米標示之建築結構尺寸。

10 FLOOR PLANS OF RESIDENTIAL PROPERTIES IN THE DEVELOPMENT 發展項目的住宅物業的樓面平面圖

Roof Plan 天台平面圖




SCALE 比例尺： 0 5M (米)

The thickness of the floor slabs (excluding plaster) of each residential unit is:
Not Applicable

The floor-to-floor height of each residential unit is:
Not Applicable

The internal areas of the residential properties on the upper floors will generally be slightly larger than those on the lower floors because of the reducing thickness of the structural walls on the upper floors.

The position of sinks at Flat Roof A and B have been relocated by way of exempted works under Buildings Ordinance after the completion of the Development. The approximate location of the alterations are indicated with curved lines  in blue on this floor plan.

CABD EQUIP. ROOM = Communal Aerial Broadcast Distribution Equipment Room 公共天線分佈房
H.R. = Hose Reel 消防喉轆


Remarks:

1. There are ceiling bulkheads and/ or sunken slabs at living/ dining rooms, bedrooms, corridors, bathrooms, store rooms and/ or kitchens of some residential units for the air conditioning system and/ or M&E services. There are exposed pipes/ ductings for air conditioning system and/ or M&E services within some store rooms.
2. The dimensions in floor plans are all structural dimensions in millimeter.
3. Flat Roof A and Flat Roof B are annotated as "Flat Roof" on the building plans as approved by the Building Authority; they are in fact located on the uppermost roof slab (residential portion) of the development.

每個住宅單位的樓板 (不包括灰泥) 的厚度為：
不適用

每個住宅單位的層與層之間的高度為：
不適用

因住宅物業的較高樓層的結構牆的厚度遞減，較高樓層的內部面積，一般比較低樓層的內部面積稍大。

平台A和B的洗滌盤的位置在發展項目落成後進行獲〔建築物條例〕豁免的工程而有所改動。該等改動的大概位置於本樓面平面圖中已用藍色曲線  作出標示。

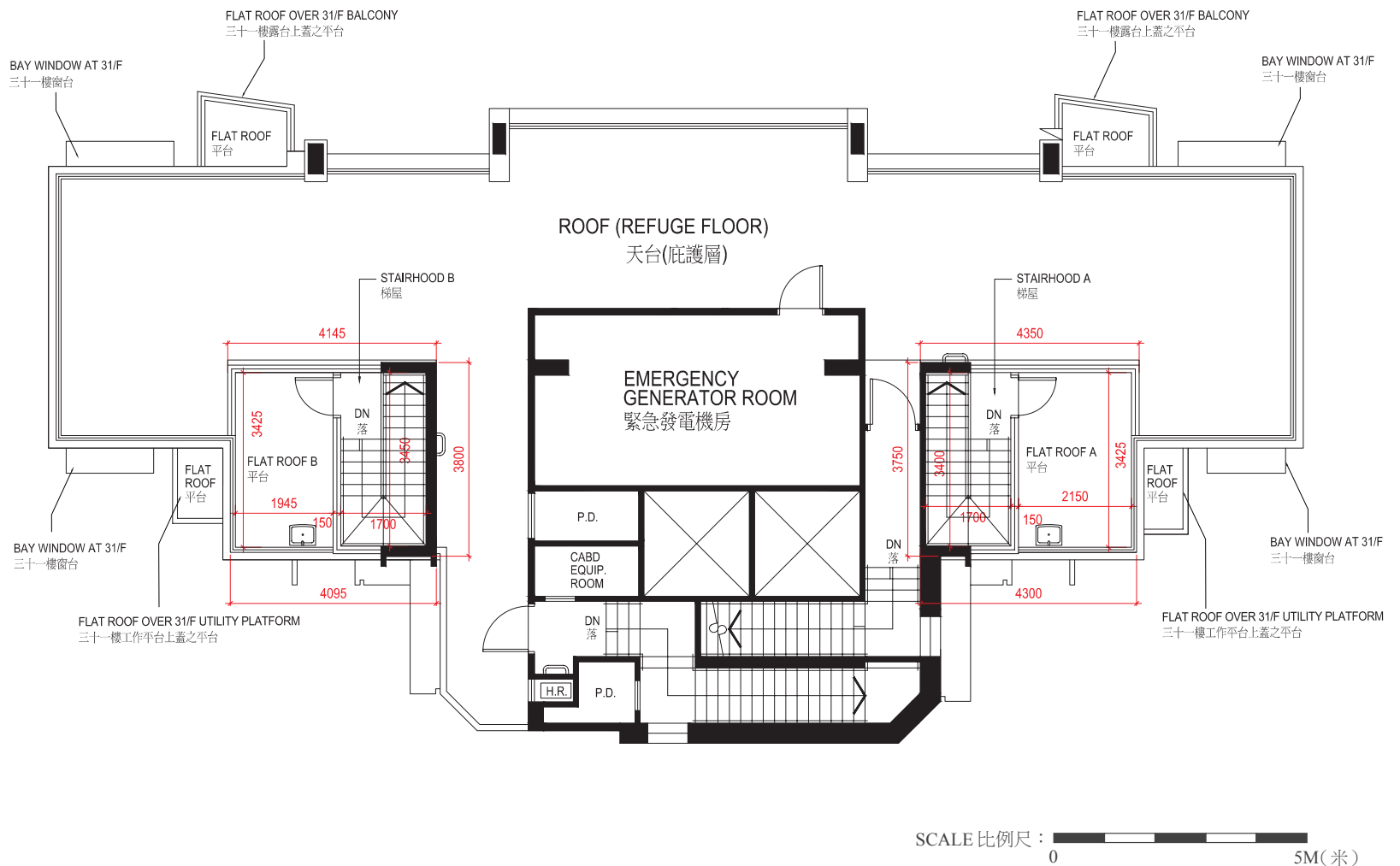
P.D. = Pipe Duct 管槽
W.M.C. = Water Meter Cabinet 水錶櫃

備註：

1. 部份住宅單位客/飯廳、睡房、走廊、浴室、儲物室及/或廚房天花有跌級樓板 (用以安裝機電設備) 及假天花內裝置冷氣喉管及/或其他機電設備。部份儲物室內設有冷氣/機電設備之外露喉管/管道。
2. 平面圖所列之數字為以毫米標示之建築結構尺寸。
3. 平台A及B在發展項目經建築事務監督批准的建築圖則上列為平台，其實際位置在最高天台樓板 (住宅部份)。

10 FLOOR PLANS OF RESIDENTIAL PROPERTIES IN THE DEVELOPMENT 發展項目的住宅物業的樓面平面圖

As-is Roof Plan 天台現狀平面圖



The thickness of the floor slabs (excluding plaster) of each residential unit is:
Not Applicable

The floor-to-floor height of each residential unit is:
Not Applicable

The internal areas of the residential properties on the upper floors will generally be slightly larger than those on the lower floors because of the reducing thickness of the structural walls on the upper floors.

CABD EQUIP. ROOM = Communal Aerial Broadcast Distribution Equipment Room 公共天線分佈房
H.R. = Hose Reel 消防喉轆

Remarks:

1. There are ceiling bulkheads and/ or sunken slabs at living/ dining rooms, bedrooms, corridors, bathrooms, store rooms and/ or kitchens of some residential units for the air conditioning system and/ or M&E services. There are exposed pipes/ ductings for air conditioning system and/ or M&E services within some store rooms.
2. The dimensions in floor plans are all structural dimensions in millimeter.
3. Flat Roof A and Flat Roof B are annotated as "Flat Roof" on the building plans as approved by the Building Authority; they are in fact located on the uppermost roof slab (residential portion) of the development.

每個住宅單位的樓板（不包括灰泥）的厚度為：
不適用

每個住宅單位的層與層之間的高度為：
不適用

因住宅物業的較高樓層的結構牆的厚度遞減，較高樓層的內部面積，一般比較低樓層的內部面積稍大。

P.D. = Pipe Duct 管槽
W.M.C. = Water Meter Cabinet 水錶櫃

備註：

1. 部份住宅單位客／飯廳、睡房、走廊、浴室、儲物室及／或廚房天花有跌級樓板（用以安裝機電設備）及假天花內裝置冷氣喉管及／或其他機電設備。部份儲物室內設有冷氣／機電設備之外露喉管／管道。
2. 平面圖所列之數字為以毫米標示之建築結構尺寸。
3. 平台A及B在發展項目經建築事務監督批准的建築圖則上列為平台，其實際位置在最高天台樓板（住宅部份）。