

GLOSSARY 詞彙表

A.F. = Architectural Feature 建築裝飾

A/C OUTDOOR UNITS = Air-conditioning Outdoor Units 冷氣機室外部份

A/C P. = Air-conditioning Platform 冷氣機平台

A/C P. ABOVE = Air-conditioning Platform Above 冷氣機平台置上
ADJOINING HOUSE = 毗連的洋房

ALUM. FEATURE GRILLE = Aluminum Feature Grille 鋁質裝飾護柵

ALUM. GRILLE COVER = Aluminum Grille Cover 鋁質護柵覆蓋

ARCHITECTURAL FEATURE WITH STONE CLADDING = 石材覆蓋的建築裝飾

BR. = Bedroom 睡房

B.W. = Bay Window 窗台

BAL. = Balcony 露台

BALCONY ABOVE = 露台置上

BATH = Bathroom 浴室

BUILDING LINE ABOVE = 建築物線置上

BUILDING LINE ABOVE FOR 15/F ONLY = 只適用於15樓之建築物線置上

BUILDING LINE ABOVE FOR 18/F ONLY = 只適用於18樓之建築物線置上

BUILDING LINE ABOVE FOR 21/F ONLY = 只適用於21樓之建築物線置上

BUILDING LINE ABOVE FOR 23/F ONLY = 只適用於23樓之建築物線置上

BUILDING LINE ABOVE FOR 25/F ONLY = 只適用於25樓之建築物線置上

BUILDING LINE ABOVE FOR 27/F ONLY = 只適用於27樓之建築物線置上

CAT LADDER WITH SAFETY HOOP = 設有安全圍欄的爬梯

CAT LADDER WITH SAFETY HOOP ABOVE = 設有安全圍欄的爬梯置上

CLEANSING WATER PUMP ROOM = 清潔水泵房

COMMON FLAT ROOF = 公用平台

CURTAIN WALL = 幕牆

DIN. = Dining Room 飯廳

DN. = Down 落

DOG HOUSE = Mechanical & Electrical Services Duct Connecting to the Floor Below 連接下層的機電設施管道

E.D. / E.D / ED = Electrical Duct 電線槽

E.M.R. = Electrical Meter Room 電錶房

ELECT. ROOM = Electrical Room 電掣房

ENTRANCE FOYER = 門口前廳

F.H. = Fire Hydrant 消防栓

FAN ROOM = 風扇房

FENCE WALL = 圍牆

FLAT ROOF = 平台

FRONT GARDEN = 前花園

GAS PIPE & ACCESS PANEL AT HIGH LEVEL = 置於高位的煤氣喉及維修面板

GLASS BALUSTRADE = 玻璃欄杆

H.R. = Hose Reel 消防喉轆

H.R. AT H/L = Hose Reel at high level 置於高位的消防喉轆

JACUZZI = 按摩池

KIT. = Kitchen 廚房

L = Lift 升降機

LAV. = Lavatory 洗手間

LAWN FINISH = 草地覆蓋

LIFT LOBBY = 升降機大堂

LIFT SHAFT = 升降機槽

LIV. = Living Room 客廳

LIV./DIN. = Living Room/Dining Room 客廳/飯廳

M. BR. = Master Bedroom 主人睡房

MAID ROOM = Maid Room 工人房

MAINTENANCE WALKWAY = 維修通道

METAL CLADDING ABOVE = 金屬覆蓋置上

METAL GRILLE = 金屬護柵

METAL GRILLE ABOVE CURB = 矮牆上的金屬護柵

METAL SLIDING GATE = 金屬趟閘

P.D. = Pipe Duct 管道槽

PARAPET WALL = 護牆

PAVEMENT = 行人路

PITCH ROOF LAWN FINISH = 草地覆蓋的斜天台

PLANTER = 花槽

POWD. = Powder Room 化妝間

RS & MR RM. = Refuse Storage and Material Recovery Room 垃圾及物料回收室

RAINWATER DOWNPIPE = 排雨水管道

REAR GARDEN = 後花園

ROOF = 天台

ROOF PLAN OF ALUM. GRILLE COVER = Roof Plan of Aluminum Grille Cover 鋁質護柵覆蓋的天台平面圖

SKYLIGHT = 天窗

STONE COPING = 蓋頂石

STORE = Store Room 儲物房

TERRACE = 前庭

U.P. = Utility Platform 工作平台

U.P. ABOVE = Utility Platform Above 工作平台置上

UP = 上

V.D. = Vent Duct 通風槽

W.M.C. = Water Meter Cabinet 水錶櫃

W/P M.L. AT H/L = Weather-proof Metal Louvre at High Level 置於高位的防風雨金屬百葉窗

WATER FEATURE = 水景

WATER HEATER CABINET = 熱水爐櫃

適用於本節各樓面平面圖之備註 Remarks applicable to the floor plans of this section:

- 樓面平面圖之尺寸所列數字為以毫米標示之建築結構尺寸。 The dimensions of the floor plans are all structural dimensions in millimeters.
- 露台及工作平台為不可封閉之地方。 Balcony and utility platform are non-enclosed areas.
- 部份樓層外牆範圍設有建築裝飾及/或外露喉管，詳細資料請參考最後批准之總建築圖則及其他相關圖則。
There may be architectural features and/or exposed pipes on external walls of some of the floors. For details, please refer to the latest approved general building plans and other relevant plans.
- 部份住宅物業的露台及/或工作平台側外牆裝飾板內藏公用去水渠。 Common drain pipes enclosed in cladding are located adjacent to balcony and/or utility platform of some residential properties.
- 部份住宅物業客廳、飯廳、睡房、走廊、工人房、儲物房、浴室、洗手間及/或廚房之裝飾橫樑或假天花內裝置冷氣喉管及/或機電設備。
There are ceiling bulkheads or false ceiling in living room, dining room, bedrooms, corridor, maid room, store, bathroom, lavatory and/or kitchen of some residential properties for the air-conditioning system and/or mechanical and electrical services.
- 樓面平面圖所示之裝置如洗滌盤、浴缸、坐廁及洗面盆等只供展示其大約位置而非展示其實際大小、設計及形狀。
The indications of fittings such as sinks, bathtubs, water closet and wash basins, etc shown on the floor plans are indications of their approximate locations only and not indications of their actual size, designs and shapes.

每個住宅物業的層與層之間的高度：3.1米及3.1米*

The floor-to-floor height of each residential property: 3.1m and 3.1m*

*包括本層地台跌級樓板上之輕質混凝土填充層厚度。

Inclusive of the thickness of light-weight concrete fill on sunken slab on the floor of this floor.

每個住宅物業的樓板(不包括灰泥)的厚度：

150毫米及190毫米(適用於第1座2樓A及B單位)；

150毫米(適用於第1座2樓C單位)

The thickness of the floor slabs (excluding plaster) of each residential property: 150mm and 190mm (applicable to Flats A and B on 2/F of Tower 1); 150mm (applicable to Flat C on 2/F of Tower 1)

因住宅物業的較高樓層的結構牆的厚度遞減，較高樓層的內部面積，一般比較低樓層的內部面積稍大。
(不適用於本發展項目)

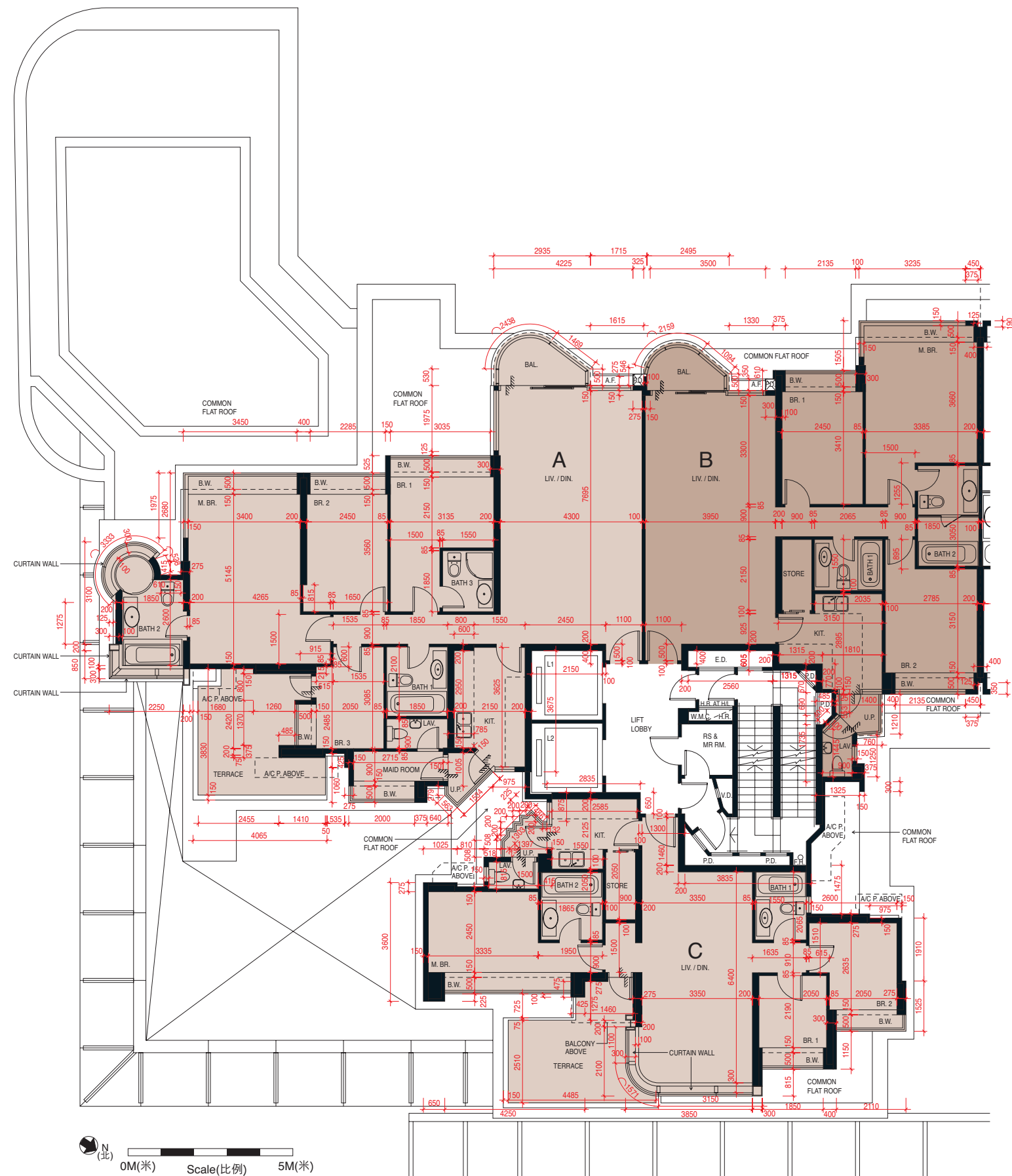
The internal areas of the residential properties on the upper floors will generally be slightly larger than those on the lower floors because of the reducing thickness of the structural walls on the upper floors. (Not applicable to the Development)

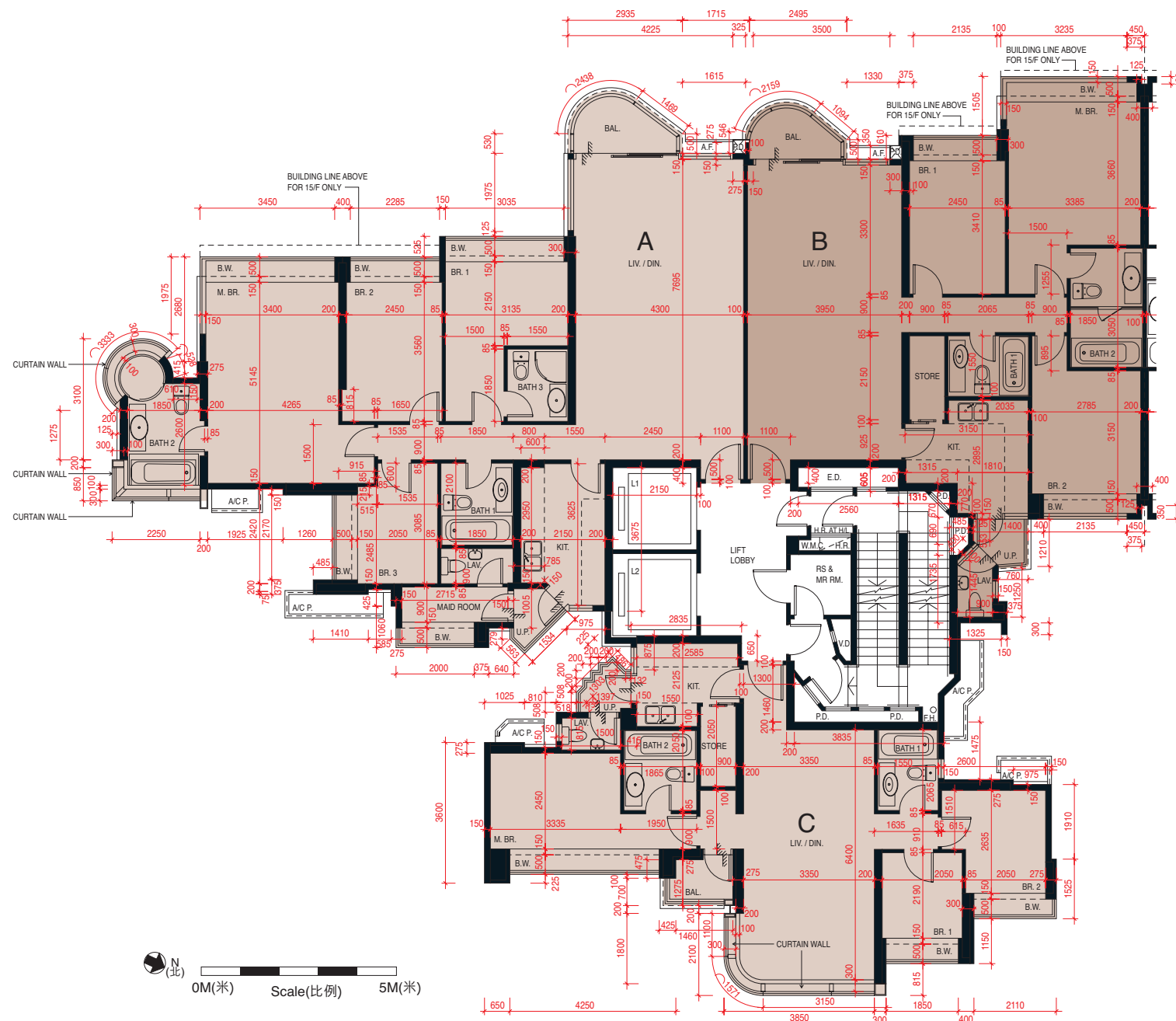
備註：

- 1) 住宅物業之天花高度將會因應其結構、建築及/或裝修設計上的差異而有所不同。
- 2) 以上樓面平面圖中顯示之名詞及簡稱之詞彙表請參閱本售樓說明書「發展項目的住宅物業的樓面平面圖」一節首頁。
- 3) 住宅樓層不設4樓、13樓、14樓及24樓。

Remarks:

- 1) The internal ceiling height within residential properties may vary due to structural, architectural and/or decoration design variations.
- 2) Please refer to the first page of the section "Floor Plans of Residential Properties in the Development" of this sales brochure for glossary of the terms and abbreviations shown in the floor plan above.
- 3) Residential floors 4/F, 13/F, 14/F and 24/F are omitted.





每個住宅物業的層與層之間的高度：3.1米及3.1米*
The floor-to-floor height of each residential property: 3.1m and 3.1m*

* 包括本層地台跌級樓板上之輕質混凝土填充層厚度。
Inclusive of the thickness of light-weight concrete fill on sunken slab on the floor of this floor.

每個住宅物業的樓板(不包括灰泥)的厚度：
150毫米及190毫米(適用於第1座3樓-15樓A及B單位)；
150毫米(適用於第1座3樓-15樓C單位)
The thickness of the floor slabs (excluding plaster) of each residential property: 150mm and 190mm (applicable to Flats A and B from 3/F to 15/F of Tower 1); 150mm (applicable to Flat C from 3/F to 15/F of Tower 1)

因住宅物業的較高樓層的結構牆的厚度遞減，較高樓層的內部面積，一般比較低樓層的內部面積稍大。
(不適用於本發展項目)

The internal areas of the residential properties on the upper floors will generally be slightly larger than those on the lower floors because of the reducing thickness of the structural walls on the upper floors. (Not applicable to the Development)

備註：

- 1) 住宅物業之天花高度將會因應其結構、建築及/或裝修設計上的差異而有所不同。
- 2) 以上樓面平面圖中顯示之名詞及簡稱之詞彙表請參閱本售樓說明書「發展項目的住宅物業的樓面平面圖」一節首頁。
- 3) 住宅樓層不設4樓、13樓、14樓及24樓。

Remarks:

- 1) The internal ceiling height within residential properties may vary due to structural, architectural and/or decoration design variations.
- 2) Please refer to the first page of the section "Floor Plans of Residential Properties in the Development" of this sales brochure for glossary of the terms and abbreviations shown in the floor plan above.
- 3) Residential floors 4/F, 13/F, 14/F and 24/F are omitted.

每個住宅物業的層與層之間的高度：3.1米及3.1米*

The floor-to-floor height of each residential property: 3.1m and 3.1m*

*包括本層地台跌級樓板上之輕質混凝土填充層厚度。

Inclusive of the thickness of light-weight concrete fill on sunken slab on the floor of this floor.

每個住宅物業的樓板(不包括灰泥)的厚度：

150毫米及190毫米(適用於第1座16樓-18樓A及B單位)；

150毫米(適用於第1座16樓-18樓C單位)

The thickness of the floor slabs (excluding plaster) of each residential property: 150mm and 190mm (applicable to Flats A and B from 16/F to 18/F of Tower 1); 150mm (applicable to Flat C from 16/F to 18/F of Tower 1)

因住宅物業的較高樓層的結構牆的厚度遞減，較高樓層的內部面積，一般比較低樓層的內部面積稍大。(不適用於本發展項目)

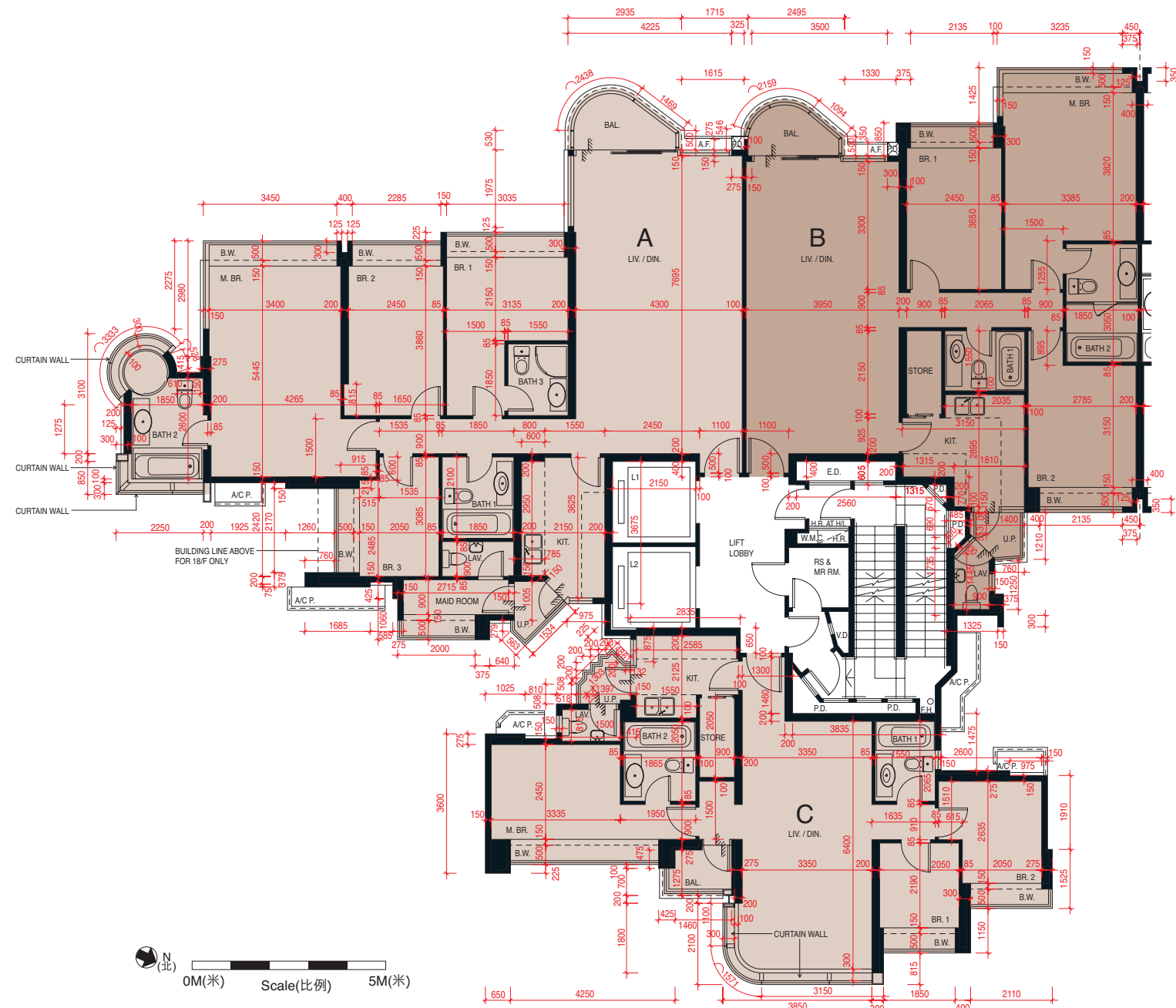
The internal areas of the residential properties on the upper floors will generally be slightly larger than those on the lower floors because of the reducing thickness of the structural walls on the upper floors. (Not applicable to the Development)

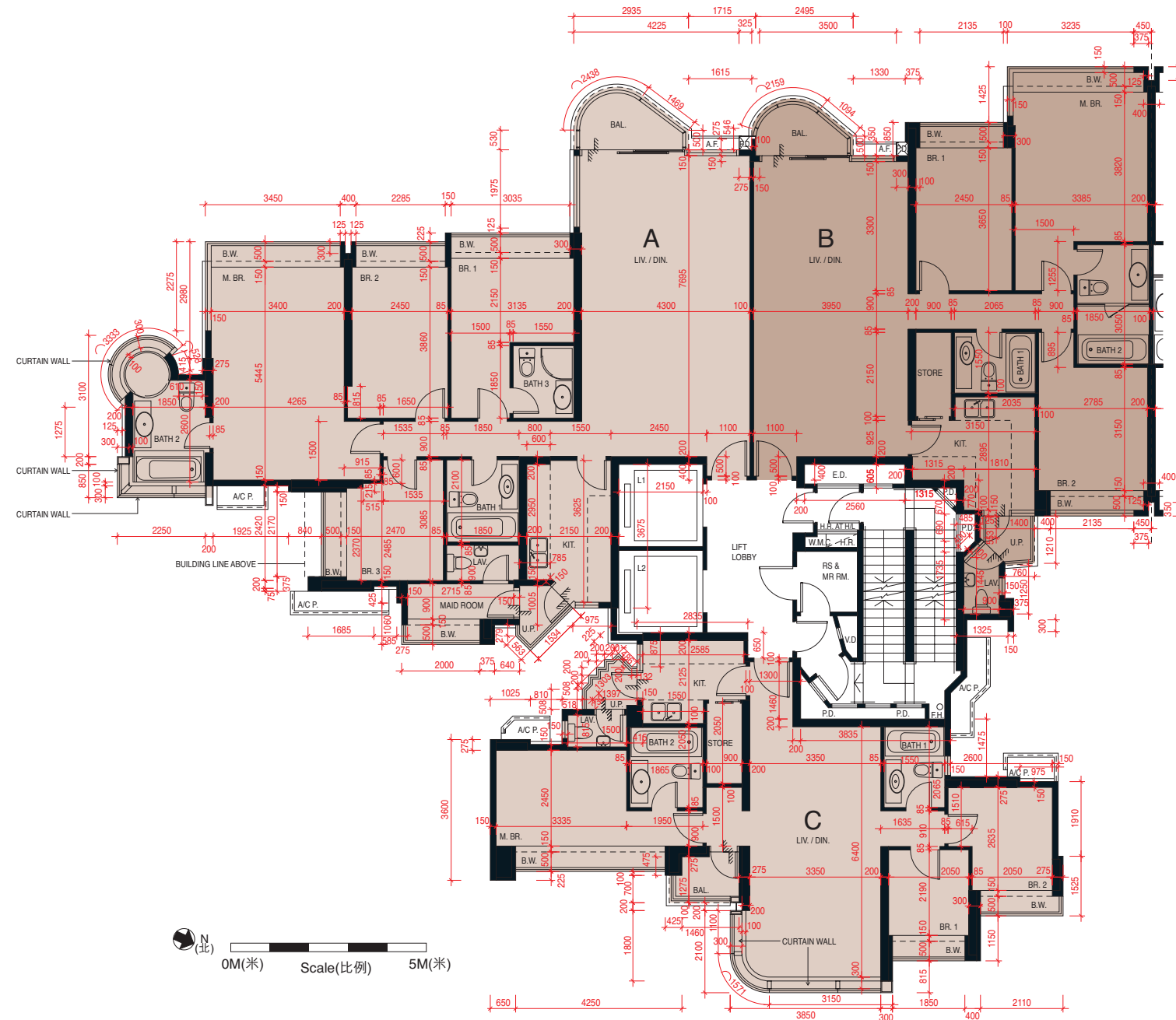
備註：

- 1) 住宅物業之天花高度將會因應其結構、建築及/或裝修設計上的差異而有所不同。
- 2) 以上樓面平面圖中顯示之名詞及簡稱之詞彙表請參閱本售樓說明書「發展項目的住宅物業的樓面平面圖」一節首頁。
- 3) 住宅樓層不設4樓、13樓、14樓及24樓。

Remarks:

- 1) The internal ceiling height within residential properties may vary due to structural, architectural and/or decoration design variations.
- 2) Please refer to the first page of the section “Floor Plans of Residential Properties in the Development” of this sales brochure for glossary of the terms and abbreviations shown in the floor plan above.
- 3) Residential floors 4/F, 13/F, 14/F and 24/F are omitted.





每個住宅物業的層與層之間的高度：3.1米及3.1米*
The floor-to-floor height of each residential property: 3.1m and 3.1m*

* 包括本層地台跌級樓板上之輕質混凝土填充層厚度。
Inclusive of the thickness of light-weight concrete fill on sunken slab on the floor of this floor.

每個住宅物業的樓板(不包括灰泥)的厚度：
150毫米及190毫米(適用於第1座19樓A及B單位)；
150毫米(適用於第1座19樓C單位)

The thickness of the floor slabs (excluding plaster) of each residential property: 150mm and 190mm (applicable to Flats A and B on 19/F of Tower 1); 150mm (applicable to Flat C on 19/F of Tower 1)

因住宅物業的較高樓層的結構牆的厚度遞減，較高樓層的內部面積，一般比較低樓層的內部面積稍大。
(不適用於本發展項目)

The internal areas of the residential properties on the upper floors will generally be slightly larger than those on the lower floors because of the reducing thickness of the structural walls on the upper floors. (Not applicable to the Development)

備註：

- 1) 住宅物業之天花高度將會因應其結構、建築及/或裝修設計上的差異而有所不同。
- 2) 以上樓面平面圖中顯示之名詞及簡稱之詞彙表請參閱本售樓說明書「發展項目的住宅物業的樓面平面圖」一節首頁。
- 3) 住宅樓層不設4樓、13樓、14樓及24樓。

Remarks:

- 1) The internal ceiling height within residential properties may vary due to structural, architectural and/or decoration design variations.
- 2) Please refer to the first page of the section "Floor Plans of Residential Properties in the Development" of this sales brochure for glossary of the terms and abbreviations shown in the floor plan above.
- 3) Residential floors 4/F, 13/F, 14/F and 24/F are omitted.

每個住宅物業的層與層之間的高度：3.1米及3.1米*

The floor-to-floor height of each residential property: 3.1m and 3.1m*

* 包括本層地台跌級樓板上之輕質混凝土填充層厚度。

Inclusive of the thickness of light-weight concrete fill on sunken slab on the floor of this floor.

每個住宅物業的樓板(不包括灰泥)的厚度：

150毫米及190毫米(適用於第1座20樓A及B單位)；

150毫米(適用於第1座20樓C單位)

The thickness of the floor slabs (excluding plaster) of each residential property: 150mm and 190mm (applicable to Flats A and B on 20/F of Tower 1); 150mm (applicable to Flat C on 20/F of Tower 1)

因住宅物業的較高樓層的結構牆的厚度遞減，較高樓層的內部面積，一般比較低樓層的內部面積稍大。
(不適用於本發展項目)

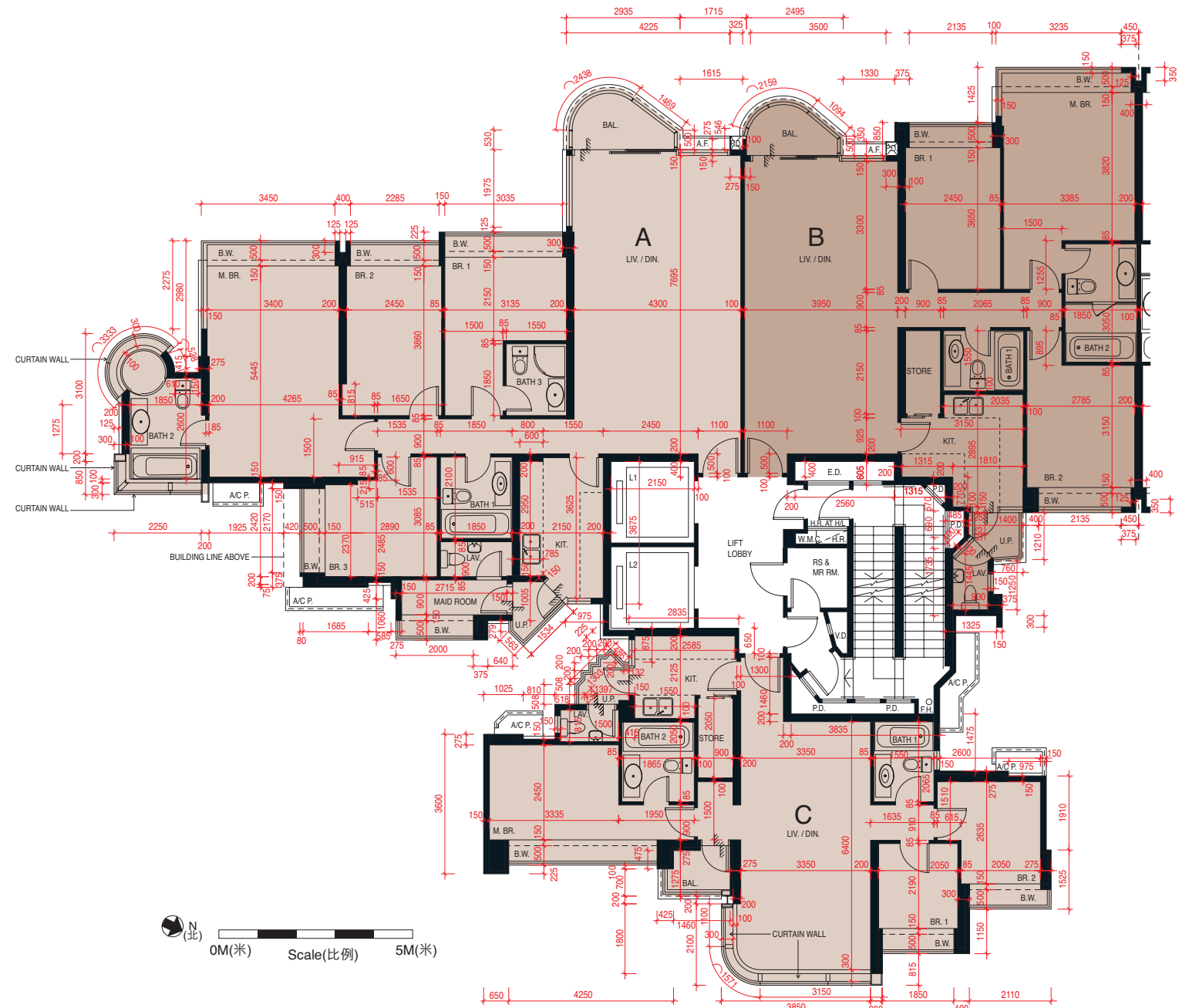
The internal areas of the residential properties on the upper floors will generally be slightly larger than those on the lower floors because of the reducing thickness of the structural walls on the upper floors. (Not applicable to the Development)

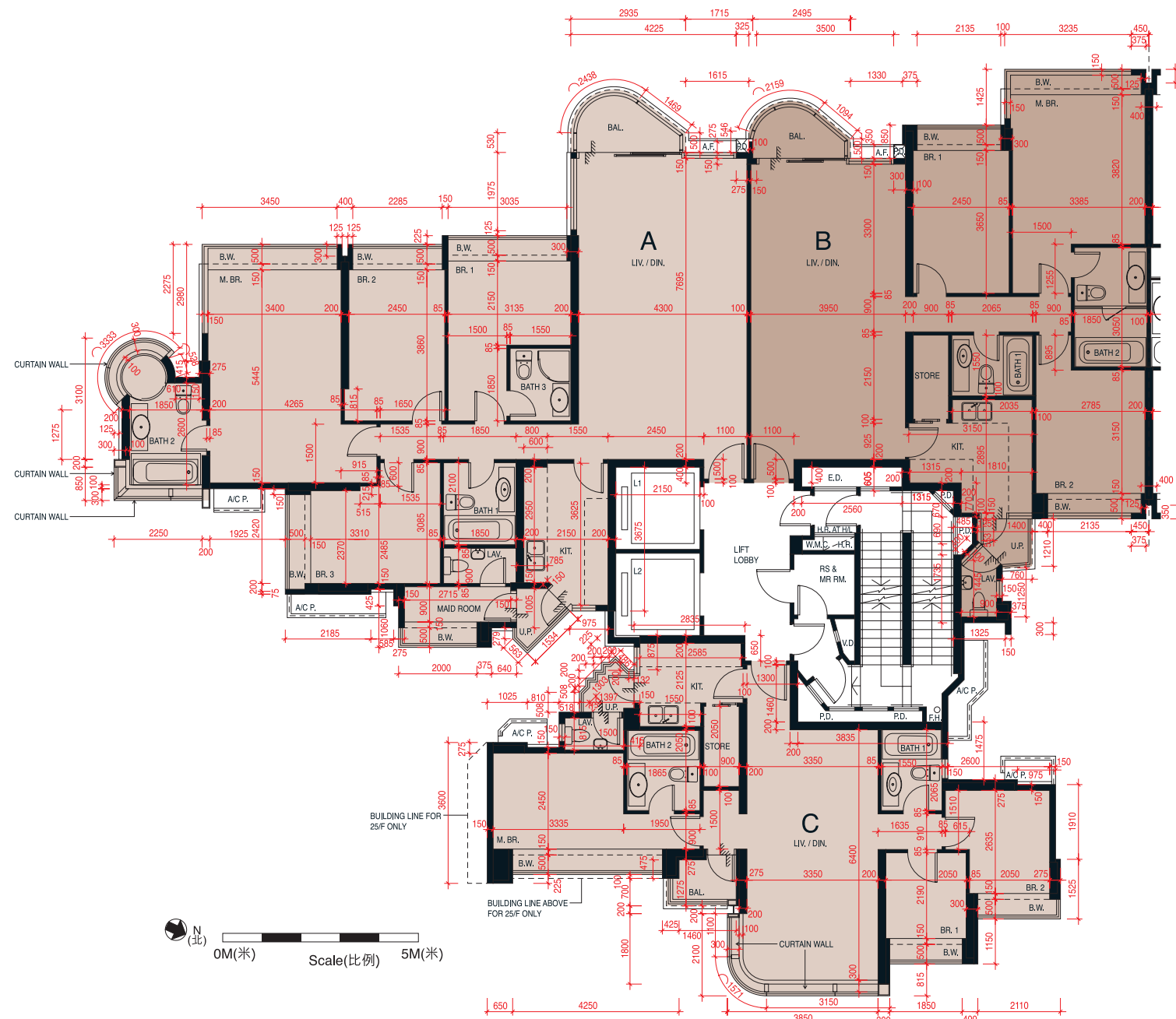
備註：

- 1) 住宅物業之天花高度將會因應其結構、建築及/或裝修設計上的差異而有所不同。
- 2) 以上樓面平面圖中顯示之名詞及簡稱之詞彙表請參閱本售樓說明書「發展項目的住宅物業的樓面平面圖」一節首頁。
- 3) 住宅樓層不設4樓、13樓、14樓及24樓。

Remarks:

- 1) The internal ceiling height within residential properties may vary due to structural, architectural and/or decoration design variations.
- 2) Please refer to the first page of the section “Floor Plans of Residential Properties in the Development” of this sales brochure for glossary of the terms and abbreviations shown in the floor plan above.
- 3) Residential floors 4/F, 13/F, 14/F and 24/F are omitted.





每個住宅物業的層與層之間的高度：3.1米及3.1米*
The floor-to-floor height of each residential property: 3.1m and 3.1m*

* 包括本層地台跌級樓板上之輕質混凝土填充層厚度。
Inclusive of the thickness of light-weight concrete fill on sunken slab on the floor of this floor.

每個住宅物業的樓板(不包括灰泥)的厚度：
150毫米及190毫米(適用於第1座21樓-25樓A及B單位)；
150毫米(適用於第1座21樓-25樓C單位)
The thickness of the floor slabs (excluding plaster) of each residential property: 150mm and 190mm (applicable to Flats A and B from 21/F to 25/F of Tower 1); 150mm (applicable to Flat C from 21/F to 25/F of Tower 1)

因住宅物業的較高樓層的結構牆的厚度遞減，較高樓層的內部面積，一般比較低樓層的內部面積稍大。
(不適用於本發展項目)

The internal areas of the residential properties on the upper floors will generally be slightly larger than those on the lower floors because of the reducing thickness of the structural walls on the upper floors. (Not applicable to the Development)

備註：

- 1) 住宅物業之天花高度將會因應其結構、建築及/或裝修設計上的差異而有所不同。
- 2) 以上樓面平面圖中顯示之名詞及簡稱之詞彙表請參閱本售樓說明書「發展項目的住宅物業的樓面平面圖」一節首頁。
- 3) 住宅樓層不設4樓、13樓、14樓及24樓。

Remarks:

- 1) The internal ceiling height within residential properties may vary due to structural, architectural and/or decoration design variations.
- 2) Please refer to the first page of the section "Floor Plans of Residential Properties in the Development" of this sales brochure for glossary of the terms and abbreviations shown in the floor plan above.
- 3) Residential floors 4/F, 13/F, 14/F and 24/F are omitted.

每個住宅物業的層與層之間的高度：3.1米及3.1米*

The floor-to-floor height of each residential property: 3.1m and 3.1m*

*包括本層地台跌級樓板上之輕質混凝土填充層厚度。

Inclusive of the thickness of light-weight concrete fill on sunken slab on the floor of this floor.

每個住宅物業的樓板(不包括灰泥)的厚度：

150毫米及190毫米(適用於第1座26樓-31樓A及B單位)；

150毫米(適用於第1座26樓-31樓C單位)

The thickness of the floor slabs (excluding plaster) of each residential property: 150mm and 190mm (applicable to Flats A and B from 26/F to 31/F of Tower 1); 150mm (applicable to Flat C from 26/F to 31/F of Tower 1)

因住宅物業的較高樓層的結構牆的厚度遞減，較高樓層的內部面積，一般比較低樓層的內部面積稍大。
(不適用於本發展項目)

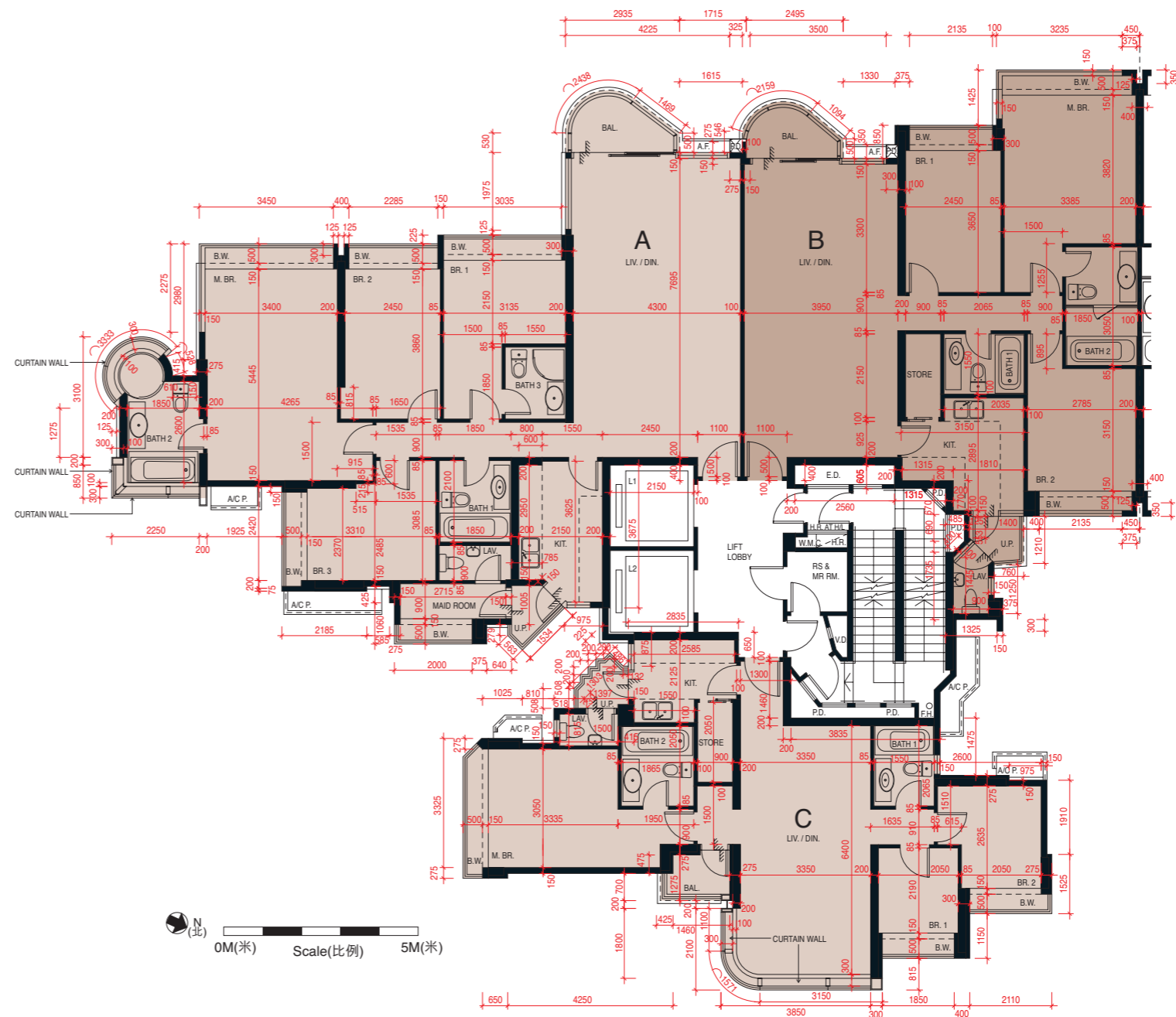
The internal areas of the residential properties on the upper floors will generally be slightly larger than those on the lower floors because of the reducing thickness of the structural walls on the upper floors. (Not applicable to the Development)

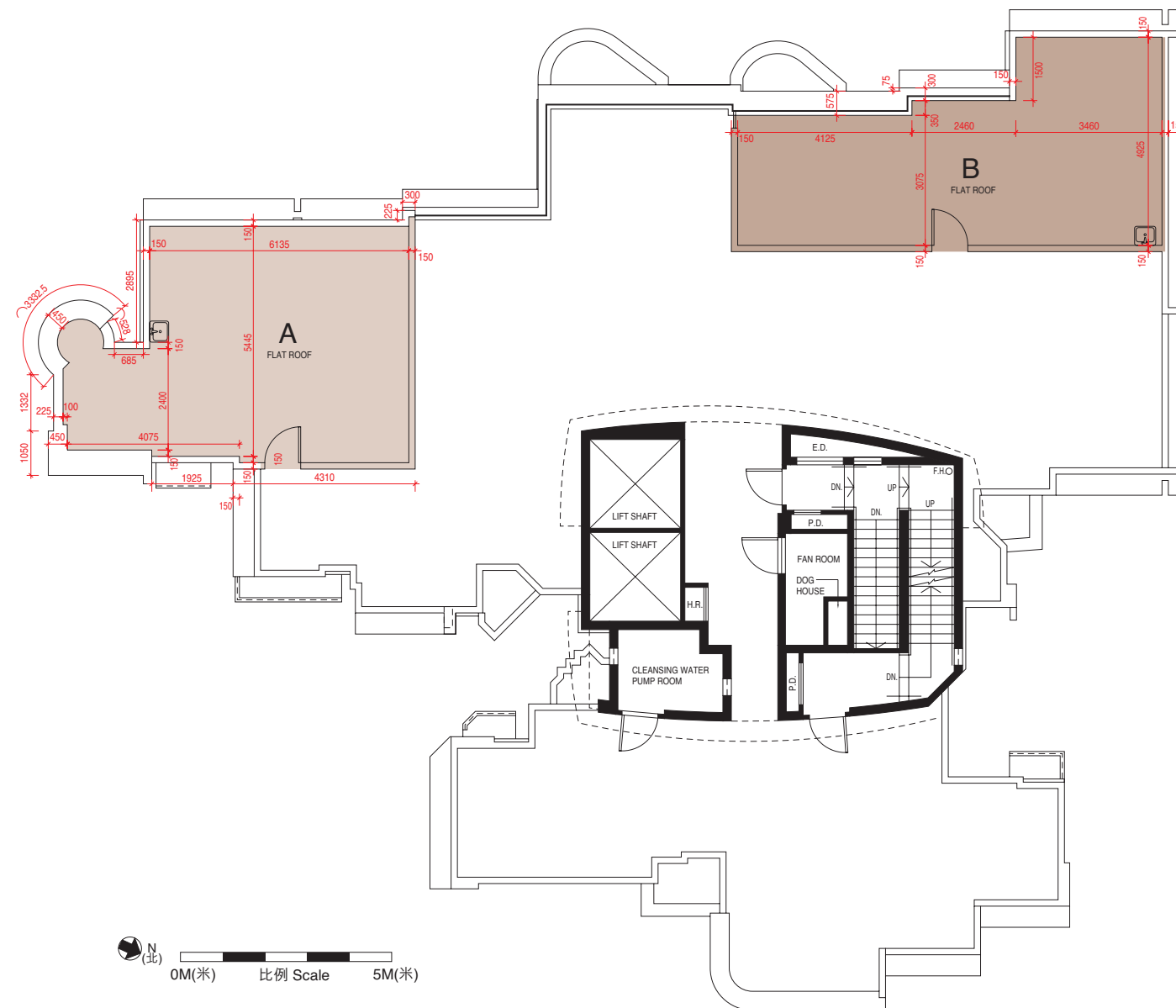
備註：

- 1) 住宅物業之天花高度將會因應其結構、建築及/或裝修設計上的差異而有所不同。
- 2) 以上樓面平面圖中顯示之名詞及簡稱之詞彙表請參閱本售樓說明書「發展項目的住宅物業的樓面平面圖」一節首頁。
- 3) 住宅樓層不設4樓、13樓、14樓及24樓。

Remarks:

- 1) The internal ceiling height within residential properties may vary due to structural, architectural and/or decoration design variations.
- 2) Please refer to the first page of the section "Floor Plans of Residential Properties in the Development" of this sales brochure for glossary of the terms and abbreviations shown in the floor plan above.
- 3) Residential floors 4/F, 13/F, 14/F and 24/F are omitted.





每個住宅物業的層與層之間的高度：不適用

The floor-to-floor height of each residential property:
Not applicable

每個住宅物業的樓板(不包括灰泥)的厚度：不適用

The thickness of the floor slabs (excluding plaster) of each residential property: Not applicable

因住宅物業的較高樓層的結構牆的厚度遞減，較高樓層的內部面積，一般比較低樓層的內部面積稍大。
(不適用於本發展項目)

The internal areas of the residential properties on the upper floors will generally be slightly larger than those on the lower floors because of the reducing thickness of the structural walls on the upper floors. (Not applicable to the Development)

備註：

- 1) 以上樓面平面圖中顯示之名詞及簡稱之詞彙表請參閱本售樓說明書「發展項目的住宅物業的樓面平面圖」一節首頁。
- 2) 住宅樓層不設4樓、13樓、14樓及24樓。

Remarks:

- 1) Please refer to the first page of the section “Floor Plans of Residential Properties in the Development” of this sales brochure for glossary of the terms and abbreviations shown in the floor plan above.
- 2) Residential floors 4/F, 13/F, 14/F and 24/F are omitted.

每個住宅物業的層與層之間的高度：3.1米及3.1米*
The floor-to-floor height of each residential property: 3.1m and 3.1m*

*包括本層地台跌級樓板上之輕質混凝土填充層厚度。
Inclusive of the thickness of light-weight concrete fill on sunken slab on the floor of this floor.

每個住宅物業的樓板(不包括灰泥)的厚度：
150毫米及190毫米(適用於第2座2樓A單位)；
100毫米、150毫米及190毫米(適用於第2座2樓B單位)；
150毫米(適用於第2座2樓C單位)

The thickness of the floor slabs (excluding plaster) of each residential property: 150mm and 190mm (applicable to Flat A on 2/F of Tower 2); 100mm, 150mm and 190mm (applicable to Flat B on 2/F of Tower 2); 150mm (applicable to Flat C on 2/F of Tower 2)

因住宅物業的較高樓層的結構牆的厚度遞減，較高樓層的內部面積，一般比較低樓層的內部面積稍大。
(不適用於本發展項目)

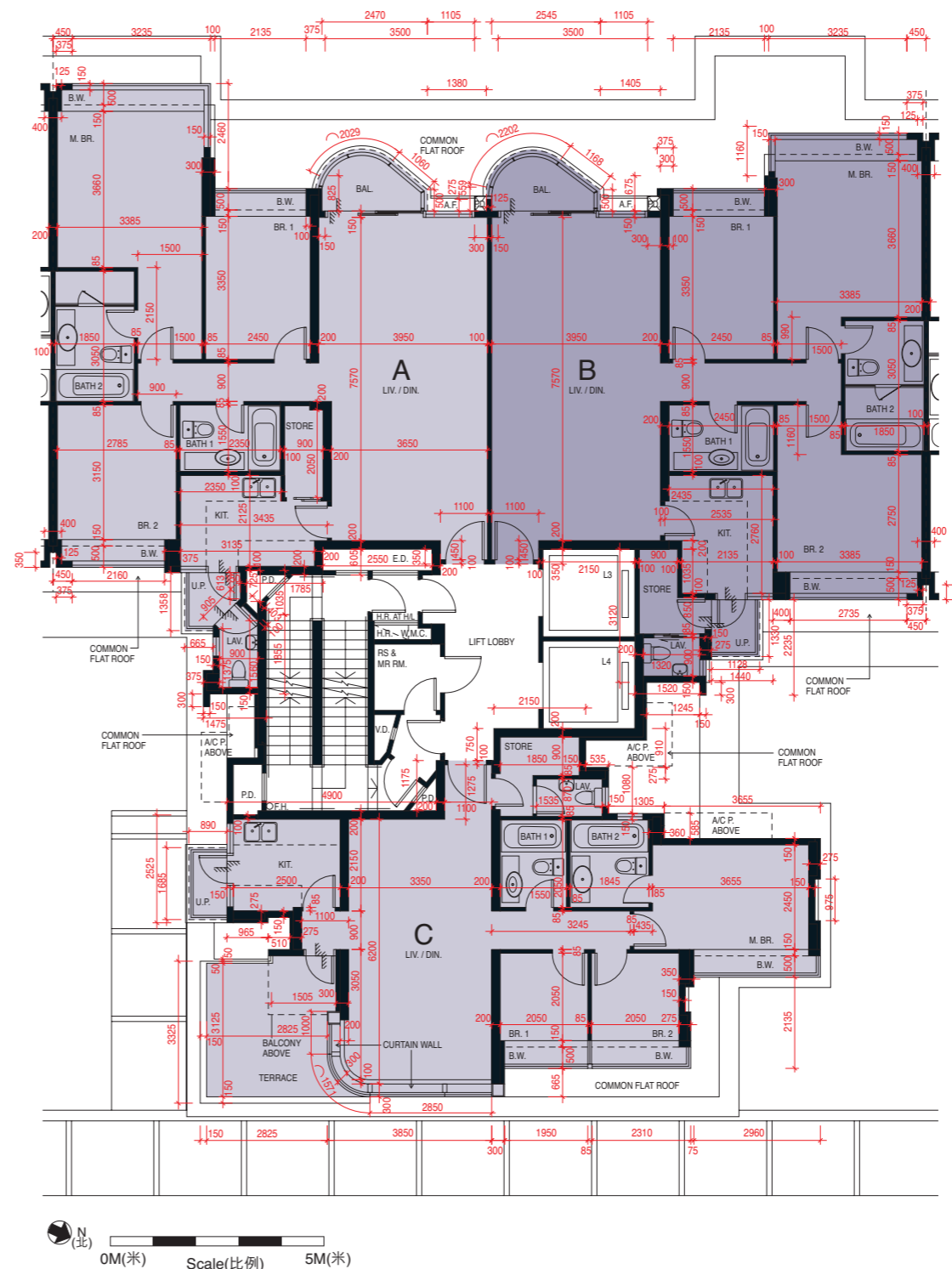
The internal areas of the residential properties on the upper floors will generally be slightly larger than those on the lower floors because of the reducing thickness of the structural walls on the upper floors. (Not applicable to the Development)

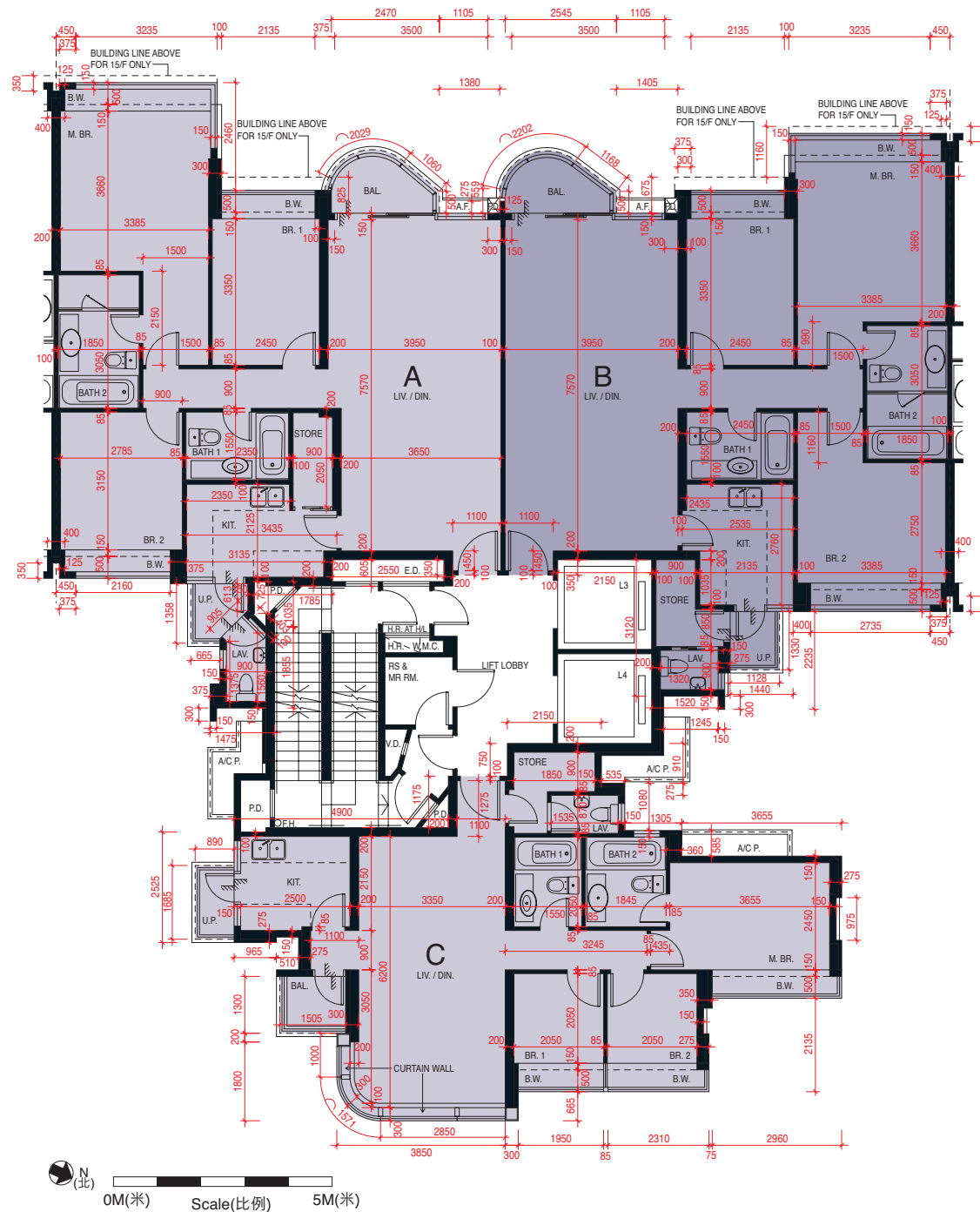
備註：

- 1) 住宅物業之天花高度將會因應其結構、建築及/或裝修設計上的差異而有所不同。
- 2) 以上樓面平面圖中顯示之名詞及簡稱之詞彙表請參閱本售樓說明書「發展項目的住宅物業的樓面平面圖」一節首頁。
- 3) 住宅樓層不設4樓、13樓、14樓及24樓。

Remarks:

- 1) The internal ceiling height within residential properties may vary due to structural, architectural and/or decoration design variations.
- 2) Please refer to the first page of the section “Floor Plans of Residential Properties in the Development” of this sales brochure for glossary of the terms and abbreviations shown in the floor plan above.
- 3) Residential floors 4/F, 13/F, 14/F and 24/F are omitted.





每個住宅物業的層與層之間的高度：3.1米及3.1米*

The floor-to-floor height of each residential property: 3.1m and 3.1m*

* 包括本層地台跌級樓板上之輕質混凝土填充層厚度。

Inclusive of the thickness of light-weight concrete fill on sunken slab on the floor of this floor.

每個住宅物業的樓板(不包括灰泥)的厚度：

150毫米及190毫米(適用於第2座3樓-15樓A單位)；

100毫米、150毫米及190毫米(適用於第2座3樓-15樓B單位)；

150毫米(適用於第2座3樓-15樓C單位)

The thickness of the floor slabs (excluding plaster) of each residential property: 150mm and 190mm (applicable to Flat A from 3/F to 15/F of Tower 2); 100mm, 150mm and 190mm (applicable to Flat B from 3/F to 15/F of Tower 2); 150mm (applicable to Flat C from 3/F to 15/F of Tower 2)

因住宅物業的較高樓層的結構牆的厚度遞減，較高樓層的內部面積，一般比較低樓層的內部面積稍大。(不適用於本發展項目)

The internal areas of the residential properties on the upper floors will generally be slightly larger than those on the lower floors because of the reducing thickness of the structural walls on the upper floors. (Not applicable to the Development)

備註：

- 1) 住宅物業之天花高度將會因應其結構、建築及/或裝修設計上的差異而有所不同。
- 2) 以上樓面平面圖中顯示之名詞及簡稱之詞彙表請參閱本售樓說明書「發展項目的住宅物業的樓面平面圖」一節首頁。
- 3) 住宅樓層不設4樓、13樓、14樓及24樓。

Remarks:

- 1) The internal ceiling height within residential properties may vary due to structural, architectural and/or decoration design variations.
- 2) Please refer to the first page of the section "Floor Plans of Residential Properties in the Development" of this sales brochure for glossary of the terms and abbreviations shown in the floor plan above.
- 3) Residential floors 4/F, 13/F, 14/F and 24/F are omitted.

每個住宅物業的層與層之間的高度：3.1米及3.1米*

The floor-to-floor height of each residential property: 3.1m and 3.1m*

*包括本層地台跌級樓板上之輕質混凝土填充層厚度。

Inclusive of the thickness of light-weight concrete fill on sunken slab on the floor of this floor.

每個住宅物業的樓板(不包括灰泥)的厚度：

150毫米及190毫米(適用於第2座16樓-25樓A單位)；

100毫米、150毫米及190毫米(適用於第2座16樓-25樓B單位)；

150毫米(適用於第2座16樓-25樓C單位)

The thickness of the floor slabs (excluding plaster) of each residential property: 150mm and 190mm (applicable to Flat A from 16/F to 25/F of Tower 2); 100mm, 150mm and 190mm (applicable to Flat B from 16/F to 25/F of Tower 2); 150mm (applicable to Flat C from 16/F to 25/F of Tower 2)

因住宅物業的較高樓層的結構牆的厚度遞減，較高樓層的內部面積，一般比較低樓層的內部面積稍大。
(不適用於本發展項目)

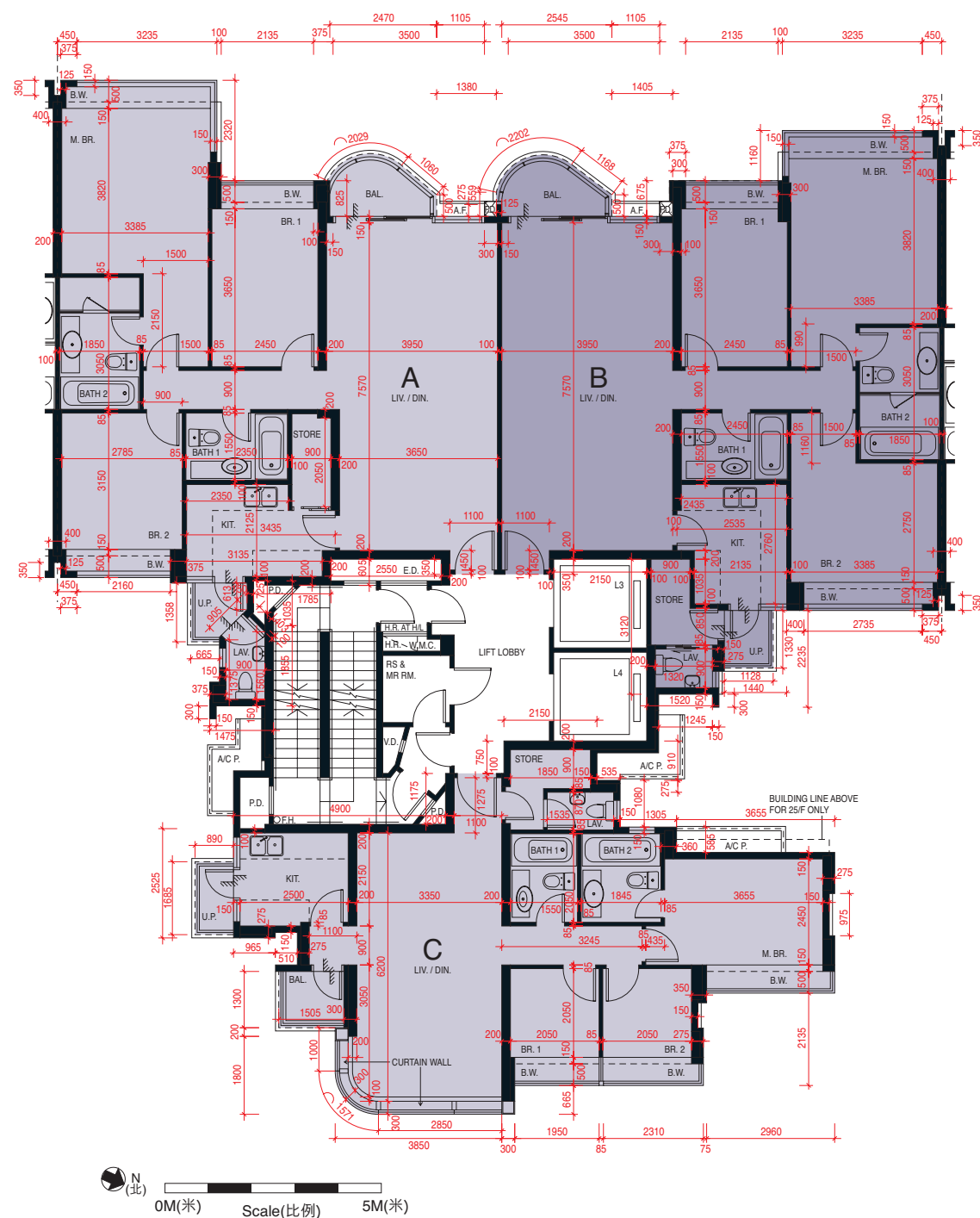
The internal areas of the residential properties on the upper floors will generally be slightly larger than those on the lower floors because of the reducing thickness of the structural walls on the upper floors. (Not applicable to the Development)

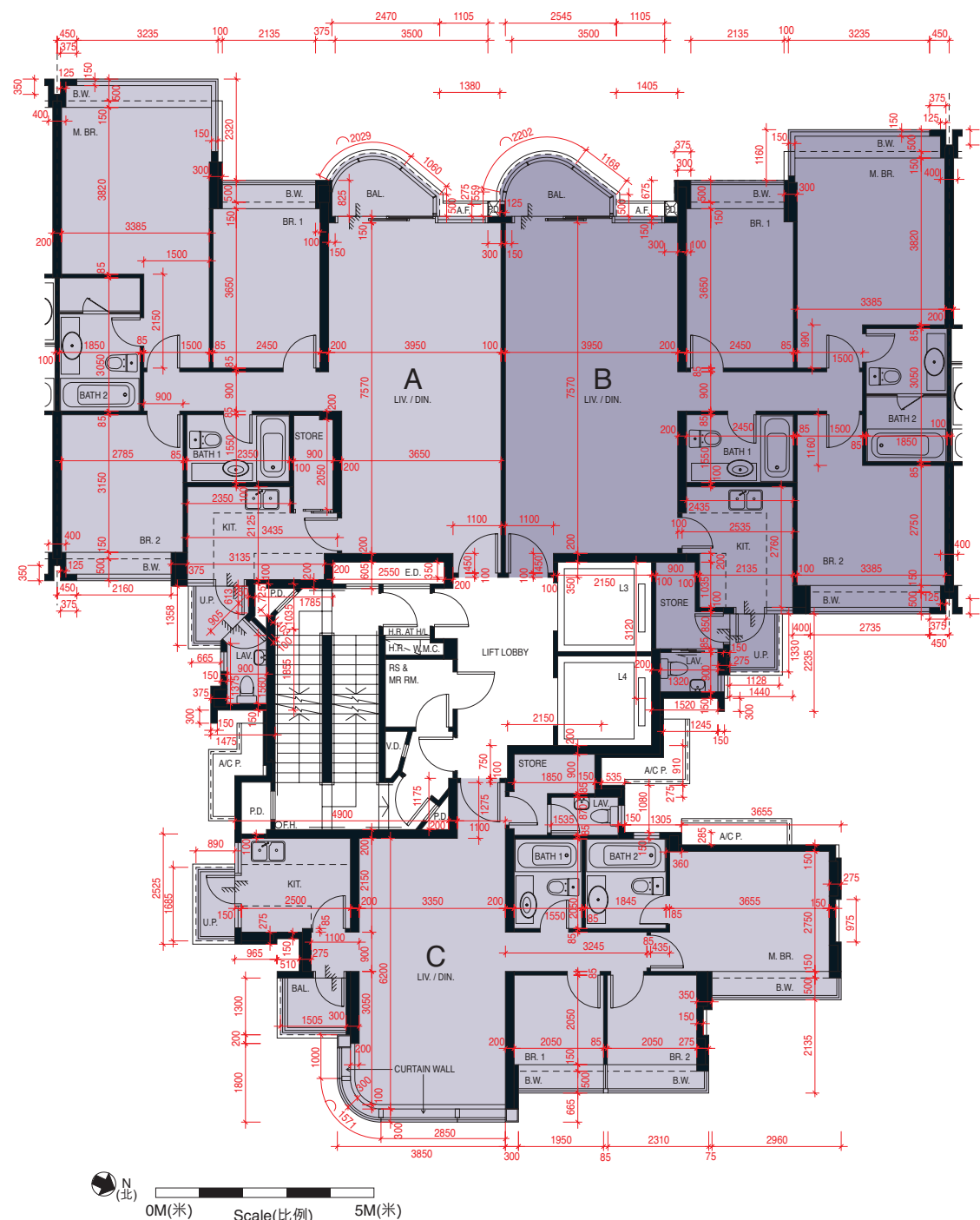
備註：

- 住宅物業之天花高度將會因應其結構、建築及/或裝修設計上的差異而有所不同。
- 以上樓面平面圖中顯示之名詞及簡稱之詞彙表請參閱本售樓說明書「發展項目的住宅物業的樓面平面圖」一節首頁。
- 住宅樓層不設4樓、13樓、14樓及24樓。

Remarks:

- The internal ceiling height within residential properties may vary due to structural, architectural and/or decoration design variations.
- Please refer to the first page of the section “Floor Plans of Residential Properties in the Development” of this sales brochure for glossary of the terms and abbreviations shown in the floor plan above.
- Residential floors 4/F, 13/F, 14/F and 24/F are omitted.





Scale (比例) 5M (米)
0M (米)

每個住宅物業的層與層之間的高度：3.1米及3.1米*

The floor-to-floor height of each residential property: 3.1m and 3.1m*

* 包括本層地台跌級樓板上之輕質混凝土填充層厚度。

Inclusive of the thickness of light-weight concrete fill on sunken slab on the floor of this floor.

每個住宅物業的樓板(不包括灰泥)的厚度：

150毫米及190毫米(適用於第2座26樓-31樓A單位)；
100毫米、150毫米及190毫米(適用於第2座26樓-31樓B單位)；
150毫米(適用於第2座26樓-31樓C單位)

The thickness of the floor slabs (excluding plaster) of each residential property: 150mm and 190mm (applicable to Flat A from 26/F to 31/F of Tower 2); 100mm, 150mm and 190mm (applicable to Flat B from 26/F to 31/F of Tower 2); 150mm (applicable to Flat C from 26/F to 31/F of Tower 2)

因住宅物業的較高樓層的結構牆的厚度遞減，較高樓層的內部面積，一般比較低樓層的內部面積稍大。
(不適用於本發展項目)

The internal areas of the residential properties on the upper floors will generally be slightly larger than those on the lower floors because of the reducing thickness of the structural walls on the upper floors. (Not applicable to the Development)

備註：

- 住宅物業之天花高度將會因應其結構、建築及/或裝修設計上的差異而有所不同。
- 以上樓面平面圖中顯示之名詞及簡稱之詞彙表請參閱本售樓說明書「發展項目的住宅物業的樓面平面圖」一節首頁。
- 住宅樓層不設4樓、13樓、14樓及24樓。

Remarks:

- The internal ceiling height within residential properties may vary due to structural, architectural and/or decoration design variations.
- Please refer to the first page of the section “Floor Plans of Residential Properties in the Development” of this sales brochure for glossary of the terms and abbreviations shown in the floor plan above.
- Residential floors 4/F, 13/F, 14/F and 24/F are omitted.

每個住宅物業的層與層之間的高度：不適用

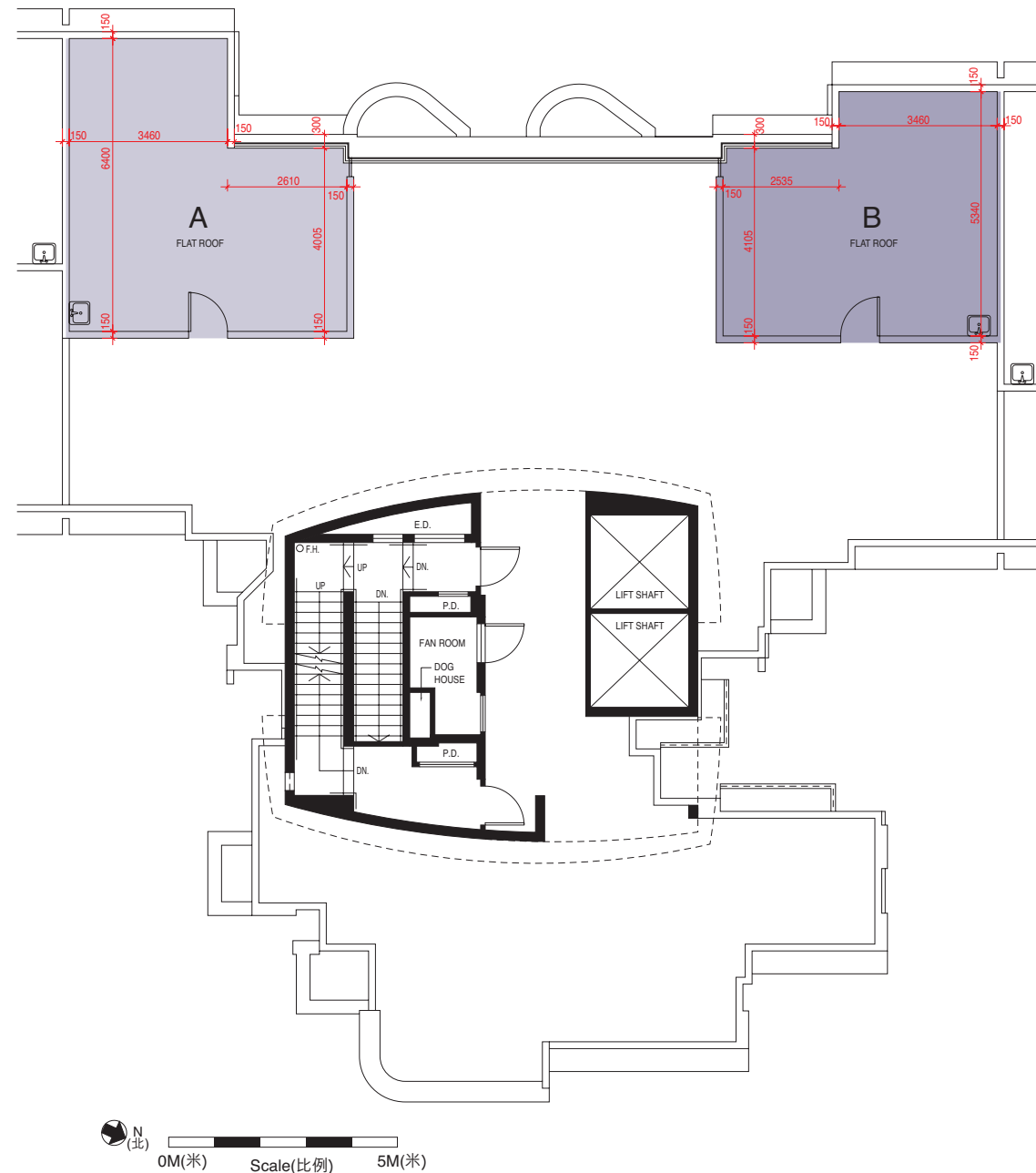
The floor-to-floor height of each residential property:
Not applicable

每個住宅物業的樓板(不包括灰泥)的厚度：不適用

The thickness of the floor slabs (excluding plaster) of each residential property: Not applicable

因住宅物業的較高樓層的結構牆的厚度遞減，較高樓層的內部面積，一般比較低樓層的內部面積稍大。
(不適用於本發展項目)

The internal areas of the residential properties on the upper floors will generally be slightly larger than those on the lower floors because of the reducing thickness of the structural walls on the upper floors. (Not applicable to the Development)

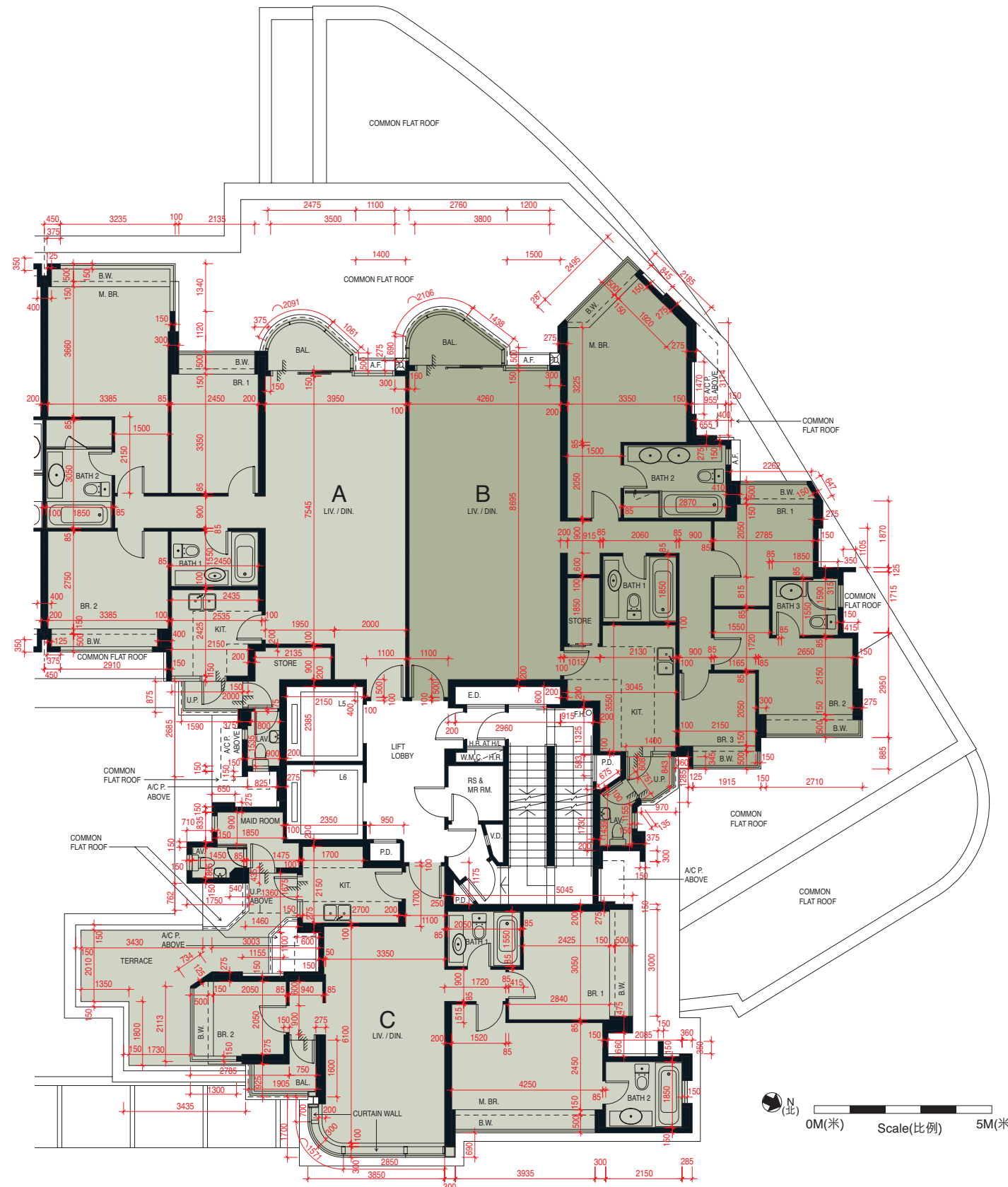


備註：

- 1) 以上樓面平面圖中顯示之名詞及簡稱之詞彙表請參閱本售樓說明書「發展項目的住宅物業的樓面平面圖」一節首頁。
- 2) 住宅樓層不設4樓、13樓、14樓及24樓。

Remarks:

- 1) Please refer to the first page of the section “Floor Plans of Residential Properties in the Development” of this sales brochure for glossary of the terms and abbreviations shown in the floor plan above.
- 2) Residential floors 4/F, 13/F, 14/F and 24/F are omitted.



每個住宅物業的層與層之間的高度：3.1米及3.1米*
The floor-to-floor height of each residential property: 3.1m and 3.1m*

* 包括本層地台跌級樓板上之輕質混凝土填充層厚度。
Inclusive of the thickness of light-weight concrete fill on sunken slab on the floor of this floor.

每個住宅物業的樓板(不包括灰泥)的厚度：
150毫米及190毫米(適用於第3座2樓A及B單位)；
150毫米(適用於第3座2樓C單位)
The thickness of the floor slabs (excluding plaster) of each residential property: 150mm and 190mm (applicable to Flats A and B on 2/F of Tower 3); 150mm (applicable to Flat C on 2/F of Tower 3)

因住宅物業的較高樓層的結構牆的厚度遞減，較高樓層的內部面積，一般比較低樓層的內部面積稍大。
(不適用於本發展項目)
The internal areas of the residential properties on the upper floors will generally be slightly larger than those on the lower floors because of the reducing thickness of the structural walls on the upper floors. (Not applicable to the Development)

- 備註：
- 住宅物業之天花高度將會因應其結構、建築及/或裝修設計上的差異而有所不同。
 - 以上樓面平面圖中顯示之名詞及簡稱之詞彙表請參閱本售樓說明書「發展項目的住宅物業的樓面平面圖」一節首頁。
 - 住宅樓層不設4樓、13樓、14樓及24樓。

- Remarks:
- The internal ceiling height within residential properties may vary due to structural, architectural and/or decoration design variations.
 - Please refer to the first page of the section “Floor Plans of Residential Properties in the Development” of this sales brochure for glossary of the terms and abbreviations shown in the floor plan above.
 - Residential floors 4/F, 13/F, 14/F and 24/F are omitted.

每個住宅物業的層與層之間的高度：3.1米及3.1米*

The floor-to-floor height of each residential property: 3.1m and 3.1m*

* 包括本層地台跌級樓板上之輕質混凝土填充層厚度。

Inclusive of the thickness of light-weight concrete fill on sunken slab on the floor of this floor.

每個住宅物業的樓板(不包括灰泥)的厚度：

150毫米及190毫米(適用於第3座3樓-15樓A及B單位)；

150毫米(適用於第3座3樓-15樓C單位)

The thickness of the floor slabs (excluding plaster) of each residential property: 150mm and 190mm (applicable to Flats A and B from 3/F to 15/F of Tower 3); 150mm (applicable to Flat C from 3/F to 15/F of Tower 3)

因住宅物業的較高樓層的結構牆的厚度遞減，較高樓層的內部面積，一般比較低樓層的內部面積稍大。
(不適用於本發展項目)

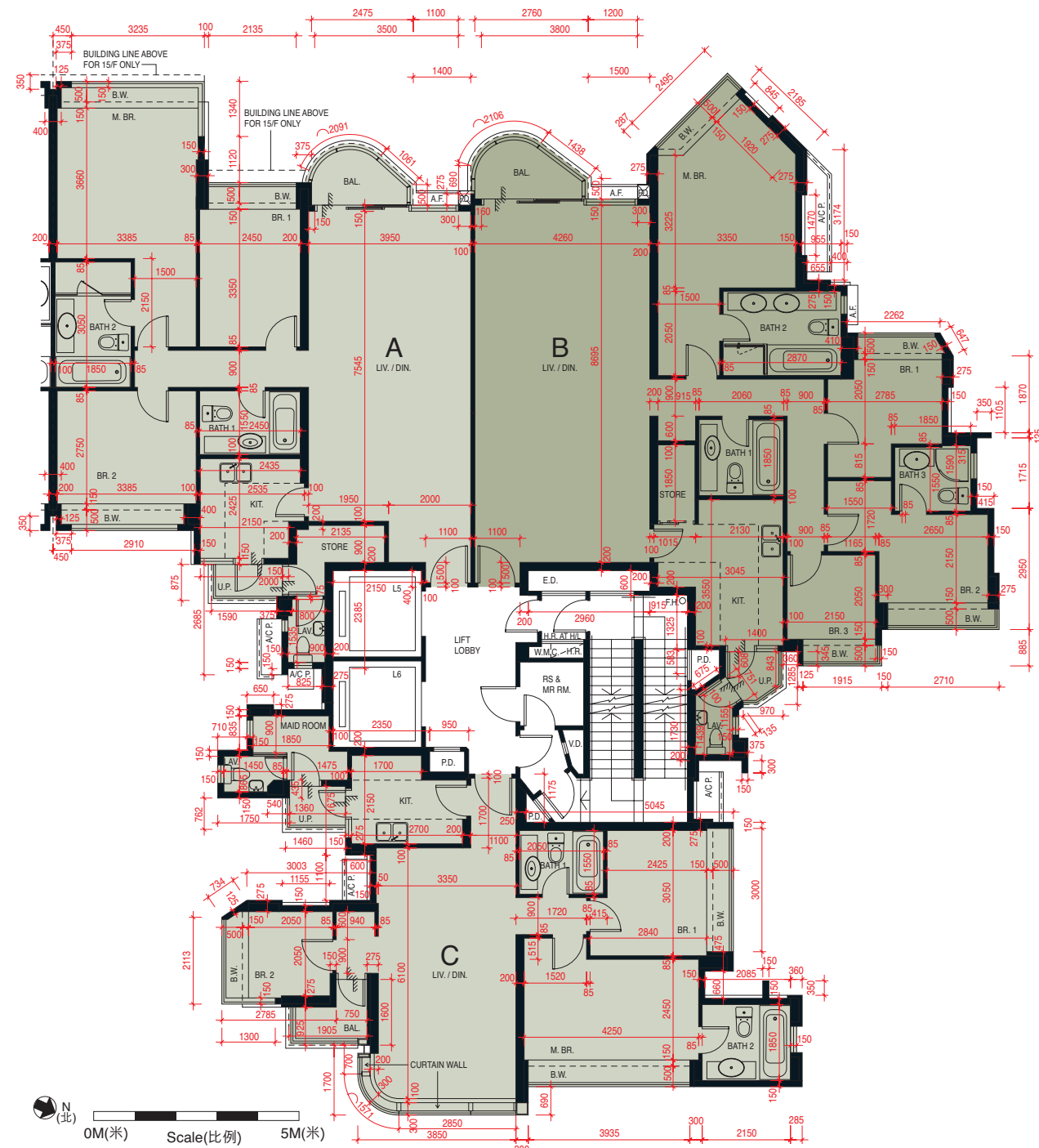
The internal areas of the residential properties on the upper floors will generally be slightly larger than those on the lower floors because of the reducing thickness of the structural walls on the upper floors. (Not applicable to the Development)

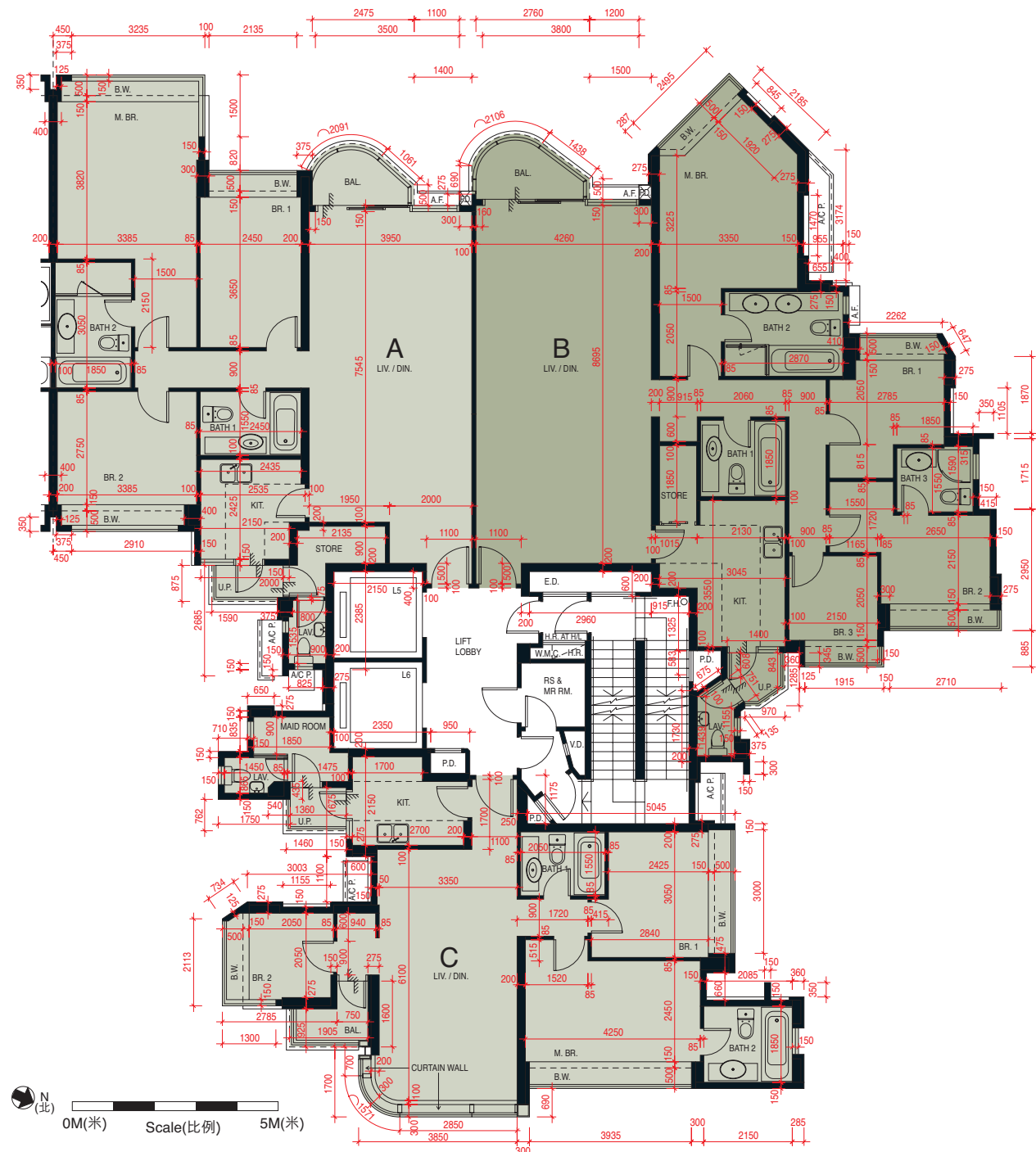
備註：

- 1) 住宅物業之天花高度將會因應其結構、建築及/或裝修設計上的差異而有所不同。
- 2) 以上樓面平面圖中顯示之名詞及簡稱之詞彙表請參閱本售樓說明書「發展項目的住宅物業的樓面平面圖」一節首頁。
- 3) 住宅樓層不設4樓、13樓、14樓及24樓。

Remarks:

- 1) The internal ceiling height within residential properties may vary due to structural, architectural and/or decoration design variations.
- 2) Please refer to the first page of the section “Floor Plans of Residential Properties in the Development” of this sales brochure for glossary of the terms and abbreviations shown in the floor plan above.
- 3) Residential floors 4/F, 13/F, 14/F and 24/F are omitted.





每個住宅物業的層與層之間的高度：3.1米及3.1米*

The floor-to-floor height of each residential property: 3.1m and 3.1m*

* 包括本層地台跌級樓板上之輕質混凝土填充層厚度。

Inclusive of the thickness of light-weight concrete fill on sunken slab on the floor of this floor.

每個住宅物業的樓板(不包括灰泥)的厚度：

150毫米及190毫米(適用於第3座16樓-31樓A及B單位)；

150毫米(適用於第3座16樓-31樓C單位)

The thickness of the floor slabs (excluding plaster) of each residential property: 150mm and 190mm (applicable to Flats A and B from 16/F to 31/F of Tower 3); 150mm (applicable to Flat C from 16/F to 31/F of Tower 3)

因住宅物業的較高樓層的結構牆的厚度遞減，較高樓層的內部面積，一般比較低樓層的內部面積稍大。(不適用於本發展項目)

The internal areas of the residential properties on the upper floors will generally be slightly larger than those on the lower floors because of the reducing thickness of the structural walls on the upper floors. (Not applicable to the Development)

備註：

- 1) 住宅物業之天花高度將會因應其結構、建築及/或裝修設計上的差異而有所不同。
- 2) 以上樓面平面圖中顯示之名詞及簡稱之詞彙表請參閱本售樓說明書「發展項目的住宅物業的樓面平面圖」一節首頁。
- 3) 住宅樓層不設4樓、13樓、14樓及24樓。

Remarks:

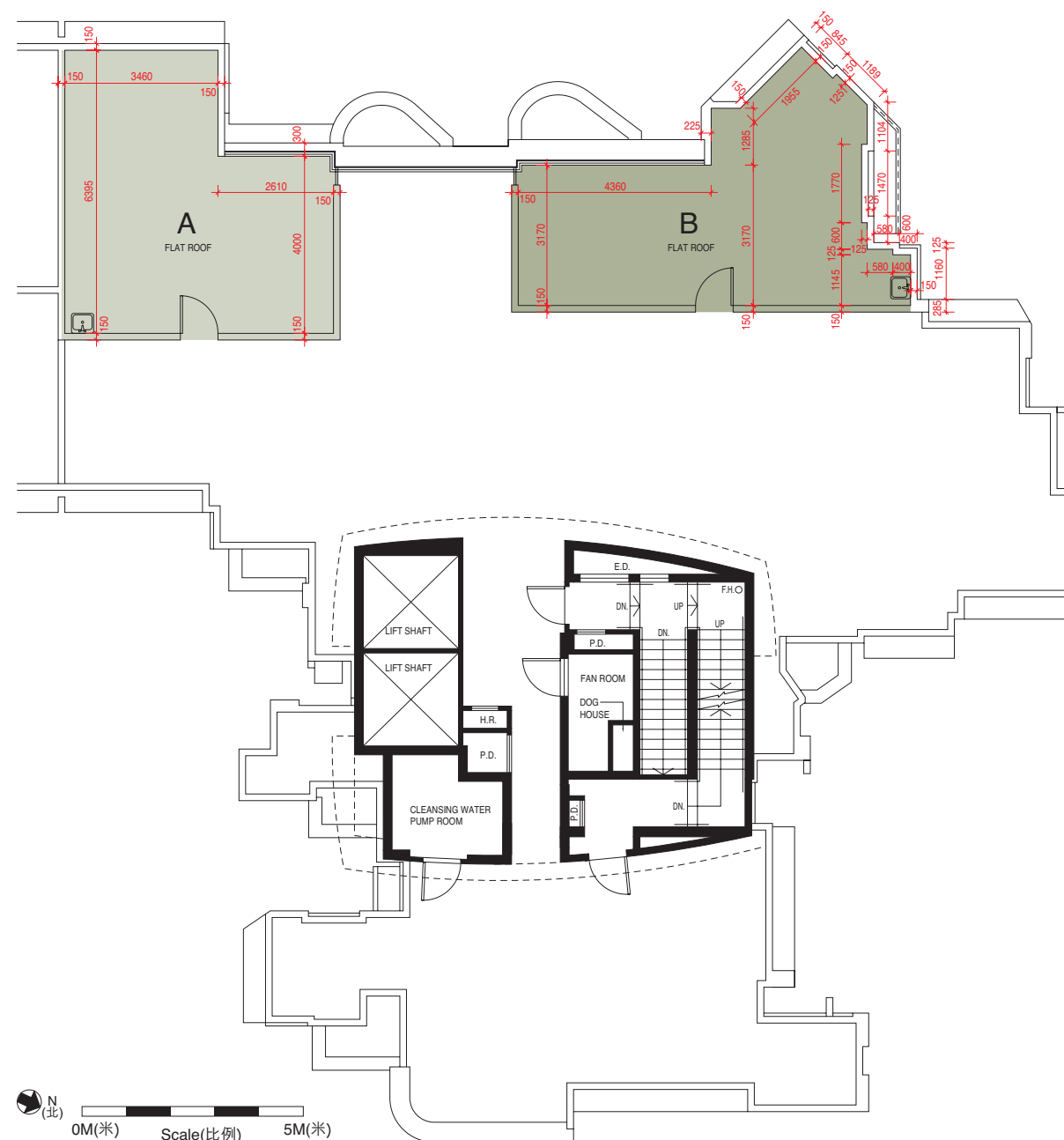
- 1) The internal ceiling height within residential properties may vary due to structural, architectural and/or decoration design variations.
- 2) Please refer to the first page of the section "Floor Plans of Residential Properties in the Development" of this sales brochure for glossary of the terms and abbreviations shown in the floor plan above.
- 3) Residential floors 4/F, 13/F, 14/F and 24/F are omitted.

每個住宅物業的層與層之間的高度：不適用
The floor-to-floor height of each residential property: Not applicable

每個住宅物業的樓板(不包括灰泥)的厚度：不適用
The thickness of the floor slabs (excluding plaster) of each residential property: Not applicable

因住宅物業的較高樓層的結構牆的厚度遞減，較高樓層的內部面積，一般比較低樓層的內部面積稍大。
(不適用於本發展項目)

The internal areas of the residential properties on the upper floors will generally be slightly larger than those on the lower floors because of the reducing thickness of the structural walls on the upper floors. (Not applicable to the Development)

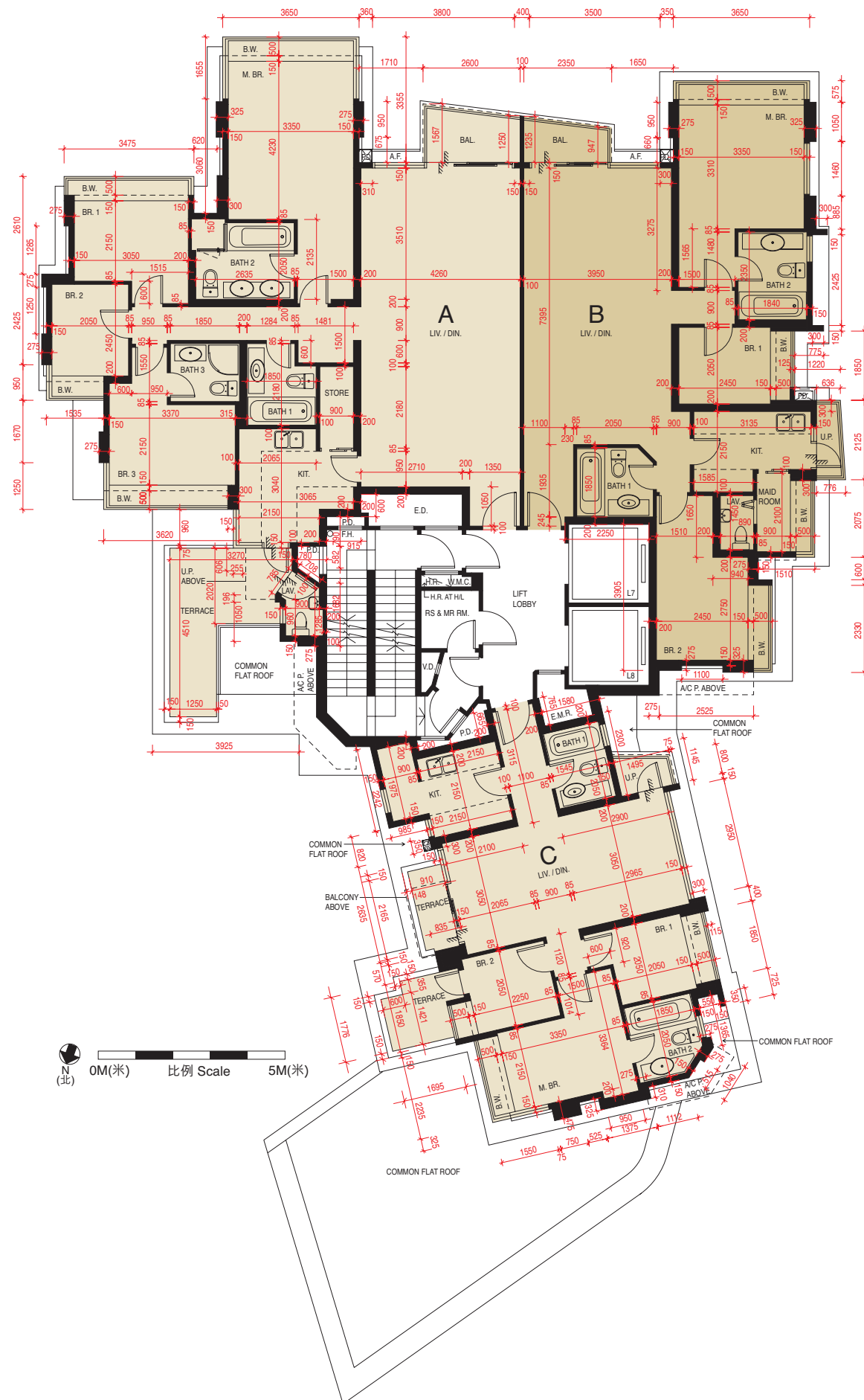


備註：

- 1) 以上樓面平面圖中顯示之名詞及簡稱之詞彙表請參閱本售樓說明書「發展項目的住宅物業的樓面平面圖」一節首頁。
- 2) 住宅樓層不設4樓、13樓、14樓及24樓。

Remarks:

- 1) Please refer to the first page of the section “Floor Plans of Residential Properties in the Development” of this sales brochure for glossary of the terms and abbreviations shown in the floor plan above.
- 2) Residential floors 4/F, 13/F, 14/F and 24/F are omitted.



每個住宅物業的層與層之間的高度：3.1米及3.1米*

The floor-to-floor height of each residential property: 3.1m and 3.1m*

* 包括本層地台跌級樓板上之輕質混凝土填充層厚度。

Inclusive of the thickness of light-weight concrete fill on sunken slab on the floor of this floor.

每個住宅物業的樓板(不包括灰泥)的厚度：
150毫米及190毫米(適用於第5座2樓A及B單位)；
150毫米(適用於第5座2樓C單位)

The thickness of the floor slabs (excluding plaster) of each residential property: 150mm and 190mm (applicable to Flats A and B on 2/F of Tower 5); 150mm (applicable to Flat C on 2/F of Tower 5)

因住宅物業的較高樓層的結構牆的厚度遞減，較高樓層的內部面積，一般比較低樓層的內部面積稍大。
(不適用於本發展項目)

The internal areas of the residential properties on the upper floors will generally be slightly larger than those on the lower floors because of the reducing thickness of the structural walls on the upper floors. (Not applicable to the Development)

備註：

- 1) 住宅物業之天花高度將會因應其結構、建築及/或裝修設計上的差異而有所不同。
- 2) 以上樓面平面圖中顯示之名詞及簡稱之詞彙表請參閱本售樓說明書「發展項目的住宅物業的樓面平面圖」一節首頁。
- 3) 住宅樓層不設4樓、13樓、14樓及24樓。

Remarks:

- 1) The internal ceiling height within residential properties may vary due to structural, architectural and/or decoration design variations.
- 2) Please refer to the first page of the section "Floor Plans of Residential Properties in the Development" of this sales brochure for glossary of the terms and abbreviations shown in the floor plan above.
- 3) Residential floors 4/F, 13/F, 14/F and 24/F are omitted.

每個住宅物業的層與層之間的高度：3.1米及3.1米*
The floor-to-floor height of each residential property: 3.1m and 3.1m*

*包括本層地台跌級樓板上之輕質混凝土填充層厚度。
Inclusive of the thickness of light-weight concrete fill on sunken slab on the floor of this floor.

每個住宅物業的樓板(不包括灰泥)的厚度：
150毫米及190毫米(適用於第5座3樓-21樓A及B單位)；
150毫米(適用於第5座3樓-21樓C單位)
The thickness of the floor slabs (excluding plaster) of each residential property: 150mm and 190mm (applicable to Flats A and B from 3/F to 21/F of Tower 5); 150mm (applicable to Flat C from 3/F to 21/F of Tower 5)

因住宅物業的較高樓層的結構牆的厚度遞減，較高樓層的內部面積，一般比較低樓層的內部面積稍大。
(不適用於本發展項目)

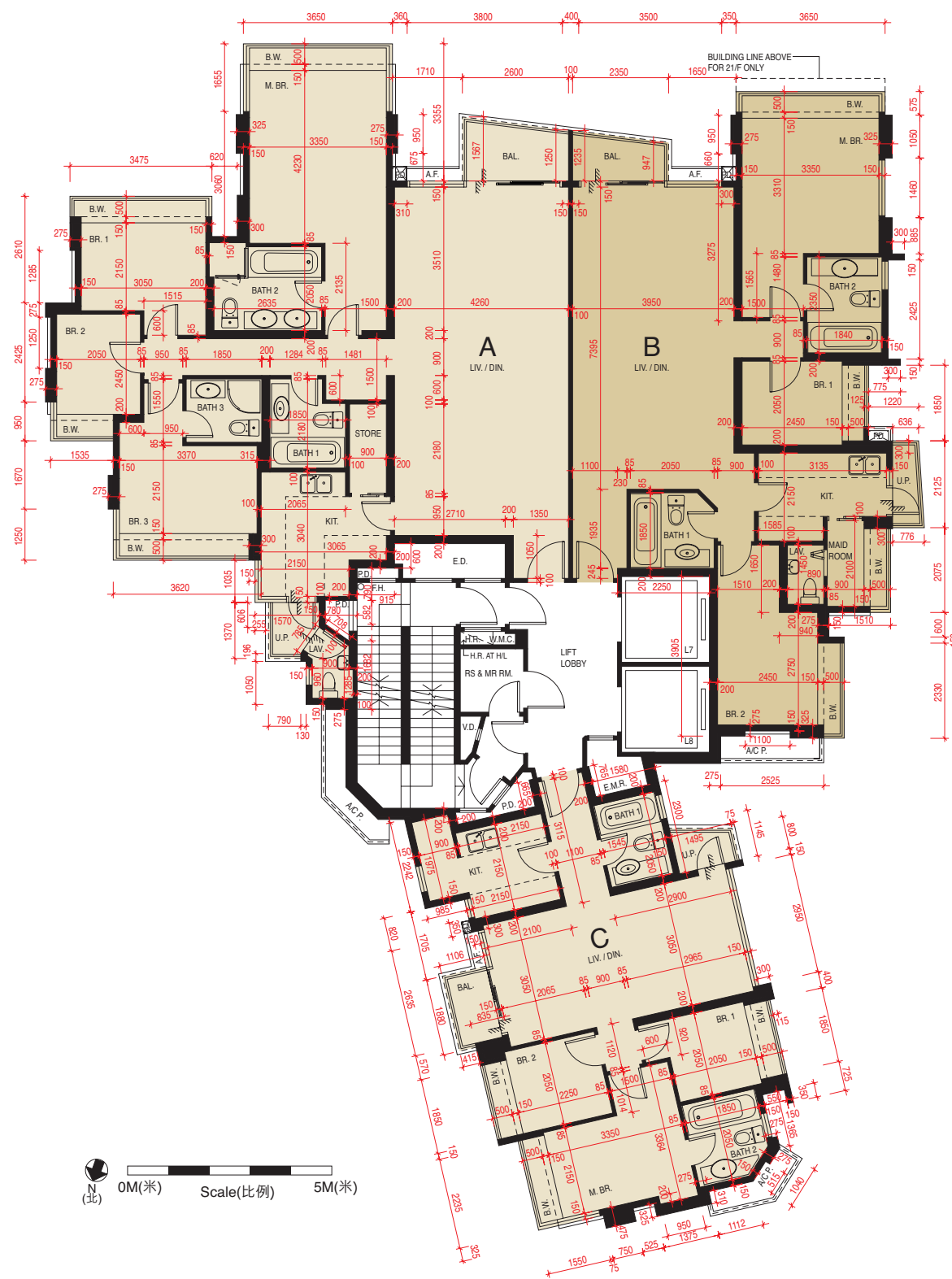
The internal areas of the residential properties on the upper floors will generally be slightly larger than those on the lower floors because of the reducing thickness of the structural walls on the upper floors. (Not applicable to the Development)

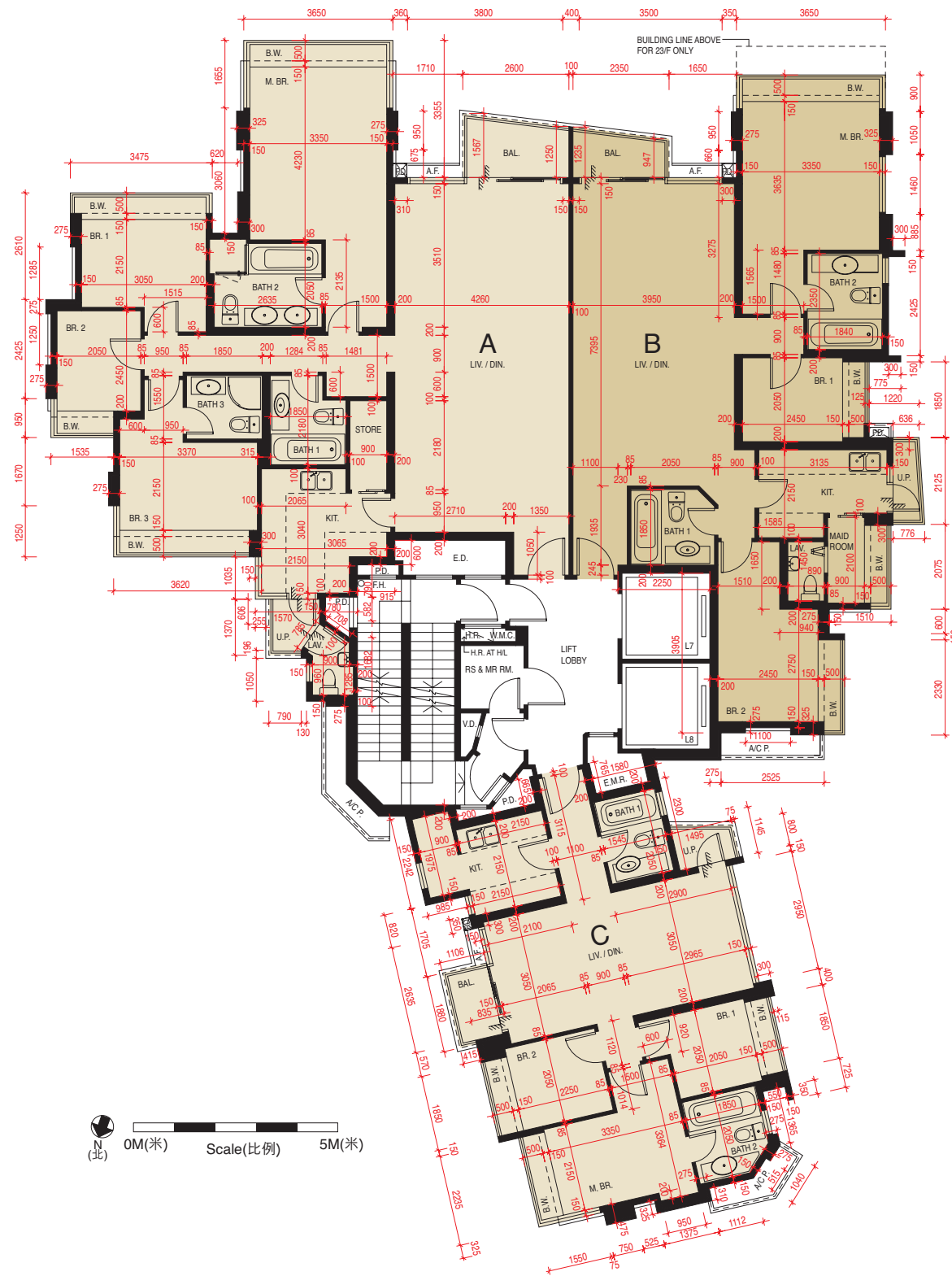
備註：

- 住宅物業之天花高度將會因應其結構、建築及/或裝修設計上的差異而有所不同。
- 以上樓面平面圖中顯示之名詞及簡稱之詞彙表請參閱本售樓說明書「發展項目的住宅物業的樓面平面圖」一節首頁。
- 住宅樓層不設4樓、13樓、14樓及24樓。

Remarks:

- The internal ceiling height within residential properties may vary due to structural, architectural and/or decoration design variations.
- Please refer to the first page of the section “Floor Plans of Residential Properties in the Development” of this sales brochure for glossary of the terms and abbreviations shown in the floor plan above.
- Residential floors 4/F, 13/F, 14/F and 24/F are omitted.





每個住宅物業的層與層之間的高度：3.1米及3.1米*
The floor-to-floor height of each residential property: 3.1m and 3.1m*

*包括本層地台跌級樓板上之輕質混凝土填充層厚度。
Inclusive of the thickness of light-weight concrete fill on sunken slab on the floor of this floor.

每個住宅物業的樓板(不包括灰泥)的厚度：
150毫米及190毫米(適用於第5座22樓-23樓A及B單位)；
150毫米(適用於第5座22樓-23樓C單位)

The thickness of the floor slabs (excluding plaster) of each residential property: 150mm and 190mm (applicable to Flats A and B from 22/F to 23/F of Tower 5); 150mm (applicable to Flat C from 22/F to 23/F of Tower 5)

因住宅物業的較高樓層的結構牆的厚度遞減，較高樓層的內部面積，一般比較低樓層的內部面積稍大。
(不適用於本發展項目)

The internal areas of the residential properties on the upper floors will generally be slightly larger than those on the lower floors because of the reducing thickness of the structural walls on the upper floors. (Not applicable to the Development)

備註：

- 1) 住宅物業之天花高度將會因應其結構、建築及/或裝修設計上的差異而有所不同。
- 2) 以上樓面平面圖中顯示之名詞及簡稱之詞彙表請參閱本售樓說明書「發展項目的住宅物業的樓面平面圖」一節首頁。
- 3) 住宅樓層不設4樓、13樓、14樓及24樓。

Remarks:

- 1) The internal ceiling height within residential properties may vary due to structural, architectural and/or decoration design variations.
- 2) Please refer to the first page of the section "Floor Plans of Residential Properties in the Development" of this sales brochure for glossary of the terms and abbreviations shown in the floor plan above.
- 3) Residential floors 4/F, 13/F, 14/F and 24/F are omitted.

每個住宅物業的層與層之間的高度：3.1米及3.1米*
The floor-to-floor height of each residential property: 3.1m and 3.1m*

* 包括本層地台跌級樓板上之輕質混凝土填充層厚度。
Inclusive of the thickness of light-weight concrete fill on sunken slab on the floor of this floor.

每個住宅物業的樓板(不包括灰泥)的厚度：
150毫米及190毫米(適用於第5座25樓-27樓A及B單位)；
150毫米(適用於第5座25樓-27樓C單位)
The thickness of the floor slabs (excluding plaster) of each residential property: 150mm and 190mm (applicable to Flats A and B from 25/F to 27/F of Tower 5); 150mm (applicable to Flat C from 25/F to 27/F of Tower 5)

因住宅物業的較高樓層的結構牆的厚度遞減，較高樓層的內部面積，一般比較低樓層的內部面積稍大。
(不適用於本發展項目)

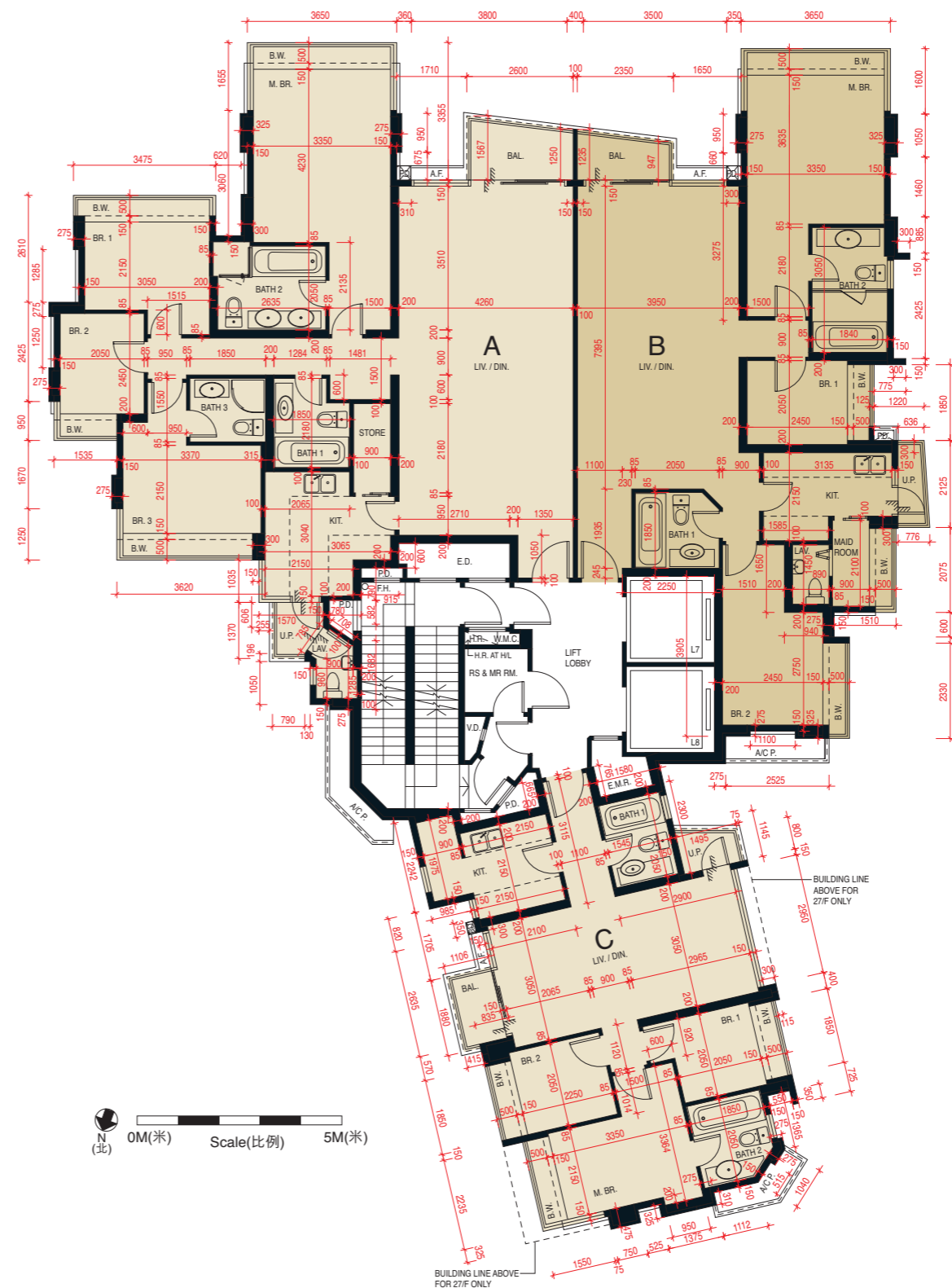
The internal areas of the residential properties on the upper floors will generally be slightly larger than those on the lower floors because of the reducing thickness of the structural walls on the upper floors. (Not applicable to the Development)

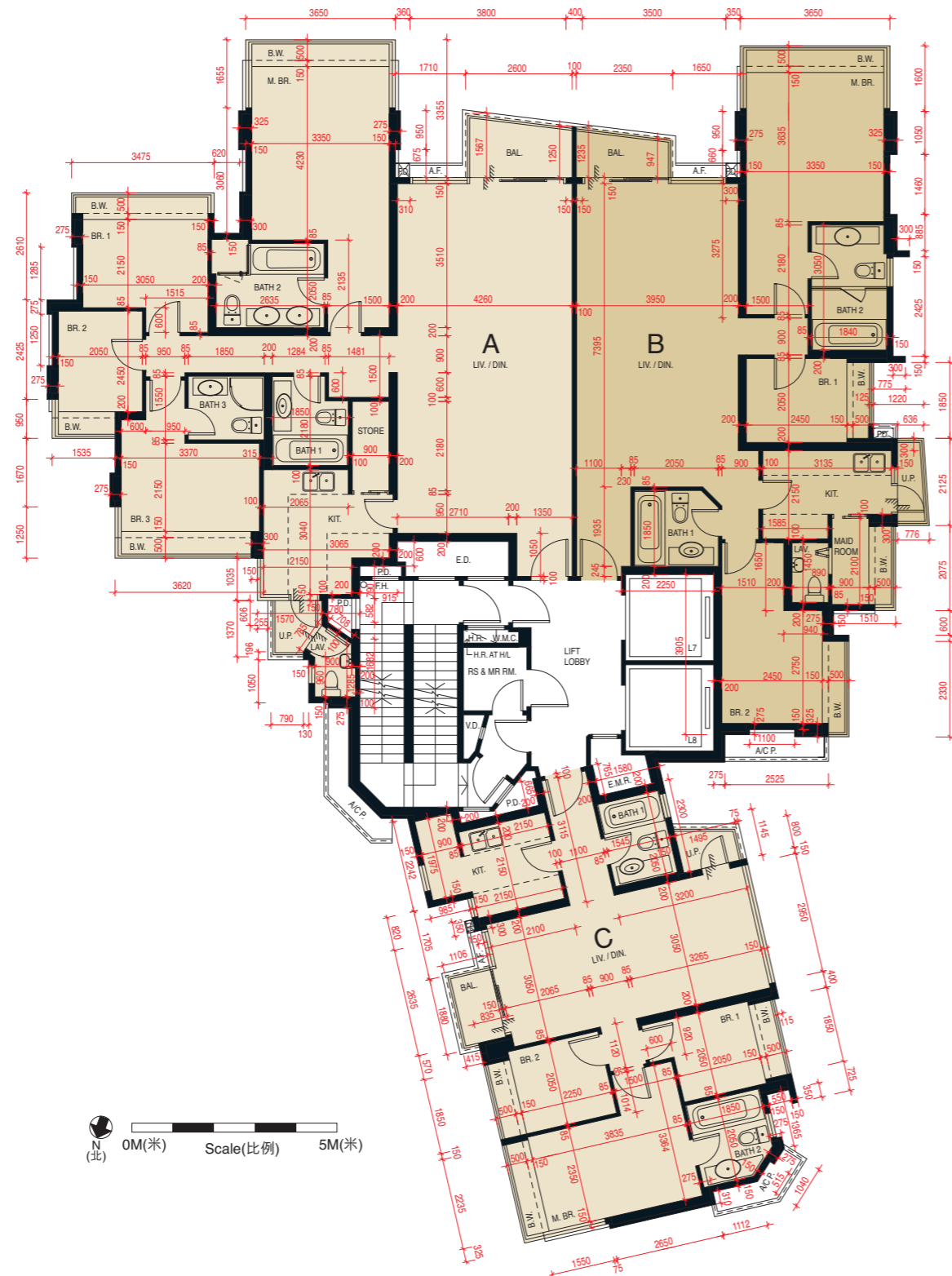
備註：

- 1) 住宅物業之天花高度將會因應其結構、建築及/或裝修設計上的差異而有所不同。
- 2) 以上樓面平面圖中顯示之名詞及簡稱之詞彙表請參閱本售樓說明書「發展項目的住宅物業的樓面平面圖」一節首頁。
- 3) 住宅樓層不設4樓、13樓、14樓及24樓。

Remarks:

- 1) The internal ceiling height within residential properties may vary due to structural, architectural and/or decoration design variations.
- 2) Please refer to the first page of the section "Floor Plans of Residential Properties in the Development" of this sales brochure for glossary of the terms and abbreviations shown in the floor plan above.
- 3) Residential floors 4/F, 13/F, 14/F and 24/F are omitted.





每個住宅物業的層與層之間的高度：3.1米及3.1米*

The floor-to-floor height of each residential property: 3.1m and 3.1m*

* 包括本層地台跌級樓板上之輕質混凝土填充層厚度。

Inclusive of the thickness of light-weight concrete fill on sunken slab on the floor of this floor.

每個住宅物業的樓板(不包括灰泥) 的厚度：

150毫米及190毫米(適用於第5座28樓-30樓A及B單位)；

150毫米(適用於第5座28樓-30樓C單位)

The thickness of the floor slabs (excluding plaster) of each residential property: 150mm and 190mm (applicable to Flats A and B from 28/F to 30/F of Tower 5); 150mm (applicable to Flat C from 28/F to 30/F of Tower 5)

因住宅物業的較高樓層的結構牆的厚度遞減，較高樓層的內部面積，一般比較低樓層的內部面積稍大。

(不適用於本發展項目)

The internal areas of the residential properties on the upper floors will generally be slightly larger than those on the lower floors because of the reducing thickness of the structural walls on the upper floors. (Not applicable to the Development)

備註：

- 1) 住宅物業之天花高度將會因應其結構、建築及/或裝修設計上的差異而有所不同。
- 2) 以上樓面平面圖中顯示之名詞及簡稱之詞彙表請參閱本售樓說明書「發展項目的住宅物業的樓面平面圖」一節首頁。
- 3) 住宅樓層不設4樓、13樓、14樓及24樓。

Remarks:

- 1) The internal ceiling height within residential properties may vary due to structural, architectural and/or decoration design variations.
- 2) Please refer to the first page of the section "Floor Plans of Residential Properties in the Development" of this sales brochure for glossary of the terms and abbreviations shown in the floor plan above.
- 3) Residential floors 4/F, 13/F, 14/F and 24/F are omitted.

每個住宅物業的層與層之間的高度：3.1米及3.1米*
The floor-to-floor height of each residential property: 3.1m and 3.1m*

*包括本層地台跌級樓板上之輕質混凝土填充層厚度。
Inclusive of the thickness of light-weight concrete fill on sunken slab on the floor of this floor.

每個住宅物業的樓板(不包括灰泥)的厚度：
150毫米及190毫米(適用於第5座31樓A及B單位)；
150毫米(適用於第5座31樓C單位)

The thickness of the floor slabs (excluding plaster) of each residential property: 150mm and 190mm (applicable to Flats A and B on 31/F of Tower 5); 150mm (applicable to Flat C on 31/F of Tower 5)

因住宅物業的較高樓層的結構牆的厚度遞減，較高樓層的內部面積，一般比較低樓層的內部面積稍大。
(不適用於本發展項目)

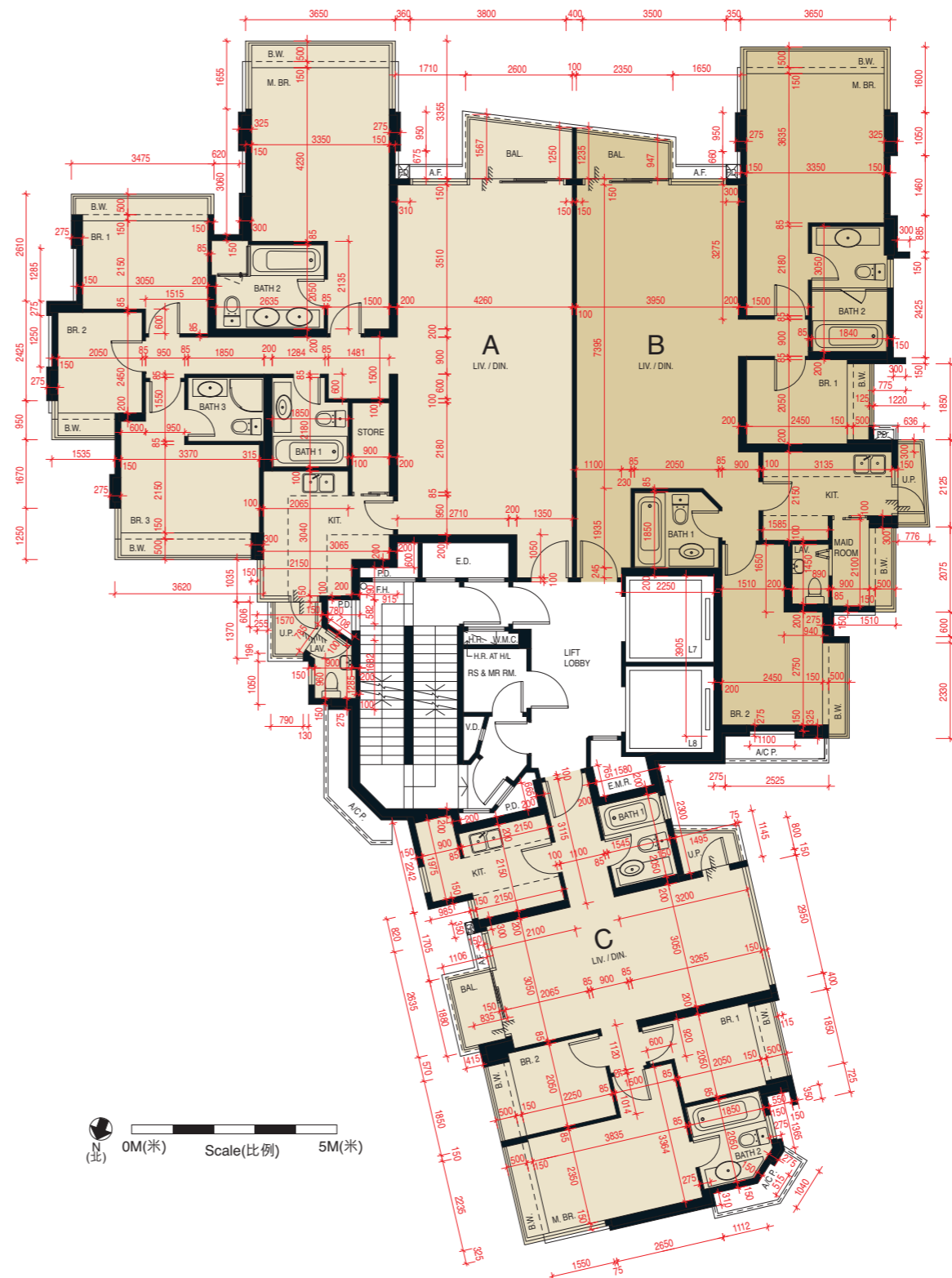
The internal areas of the residential properties on the upper floors will generally be slightly larger than those on the lower floors because of the reducing thickness of the structural walls on the upper floors. (Not applicable to the Development)

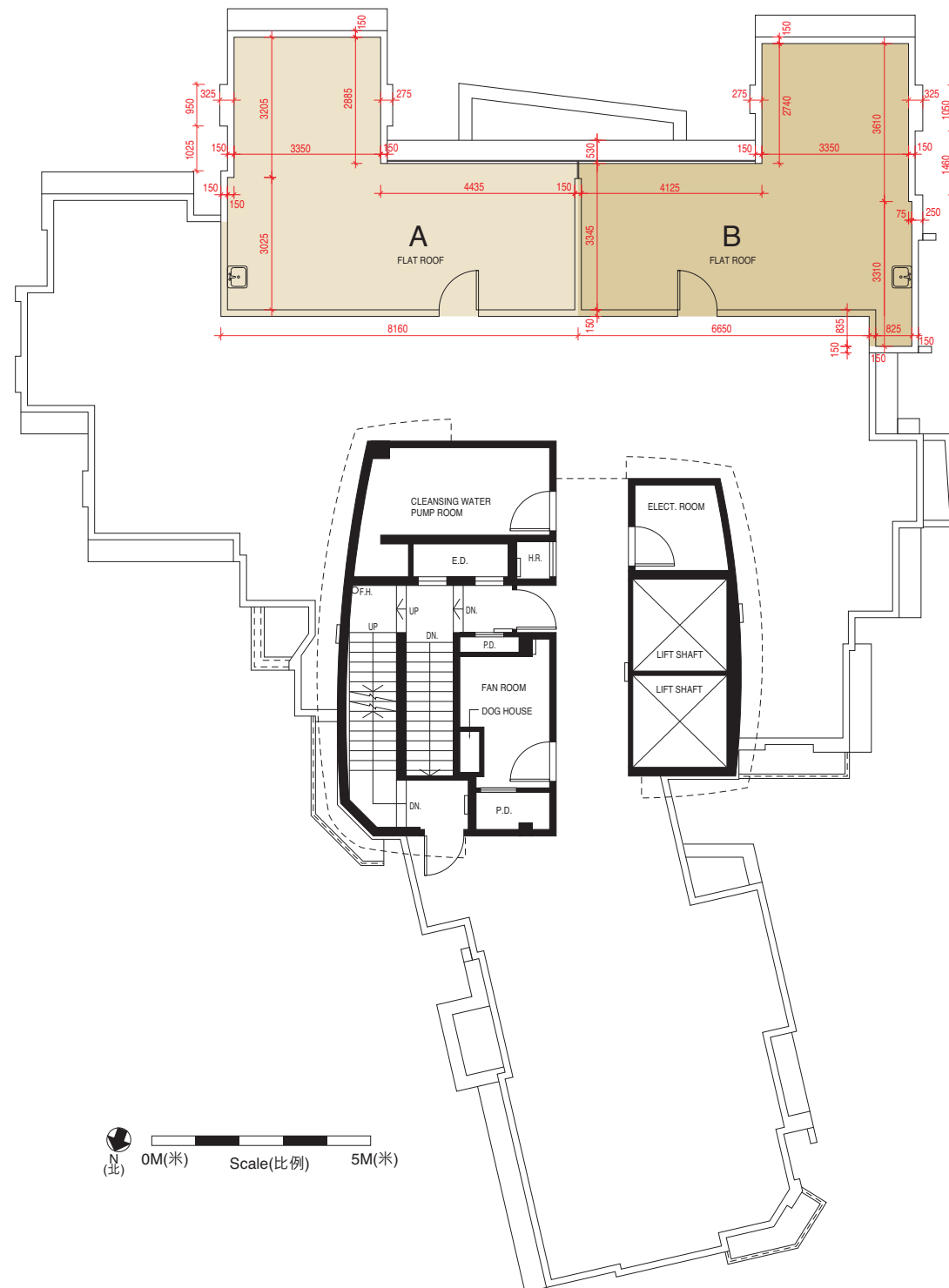
備註：

- 1) 住宅物業之天花高度將會因應其結構、建築及/或裝修設計上的差異而有所不同。
- 2) 以上樓面平面圖中顯示之名詞及簡稱之詞彙表請參閱本售樓說明書「發展項目的住宅物業的樓面平面圖」一節首頁。
- 3) 住宅樓層不設4樓、13樓、14樓及24樓。

Remarks:

- 1) The internal ceiling height within residential properties may vary due to structural, architectural and/or decoration design variations.
- 2) Please refer to the first page of the section “Floor Plans of Residential Properties in the Development” of this sales brochure for glossary of the terms and abbreviations shown in the floor plan above.
- 3) Residential floors 4/F, 13/F, 14/F and 24/F are omitted.





每個住宅物業的層與層之間的高度：不適用

The floor-to-floor height of each residential property:
Not applicable

每個住宅物業的樓板(不包括灰泥)的厚度：不適用

The thickness of the floor slabs (excluding plaster) of each residential property: Not applicable

因住宅物業的較高樓層的結構牆的厚度遞減，較高樓層的內部面積，一般比較低樓層的內部面積稍大。
(不適用於本發展項目)

The internal areas of the residential properties on the upper floors will generally be slightly larger than those on the lower floors because of the reducing thickness of the structural walls on the upper floors. (Not applicable to the Development)

備註：

- 1) 以上樓面平面圖中顯示之名詞及簡稱之詞彙表請參閱本售樓說明書「發展項目的住宅物業的樓面平面圖」一節首頁。
- 2) 住宅樓層不設4樓、13樓、14樓及24樓。

Remarks:

- 1) Please refer to the first page of the section “Floor Plans of Residential Properties in the Development” of this sales brochure for glossary of the terms and abbreviations shown in the floor plan above.
- 2) Residential floors 4/F, 13/F, 14/F and 24/F are omitted.

層與層之間的高度：3.5米
Floor-to-floor height: 3.5m

樓板(不包括灰泥)的厚度：170毫米(適用於地下及1樓)
Thickness of the floor slabs (excluding plaster):
170mm (applicable to Ground Floor and 1st Floor)

因住宅物業的較高樓層的結構牆的厚度遞減，較高樓層的內部面積，一般比較低樓層的內部面積稍大。
(不適用於本發展項目)

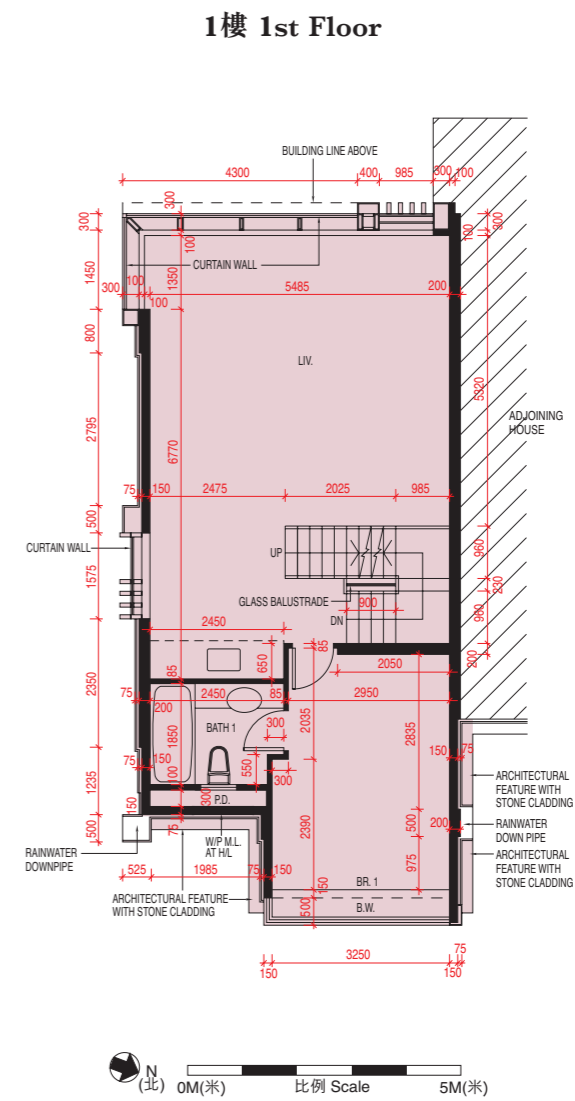
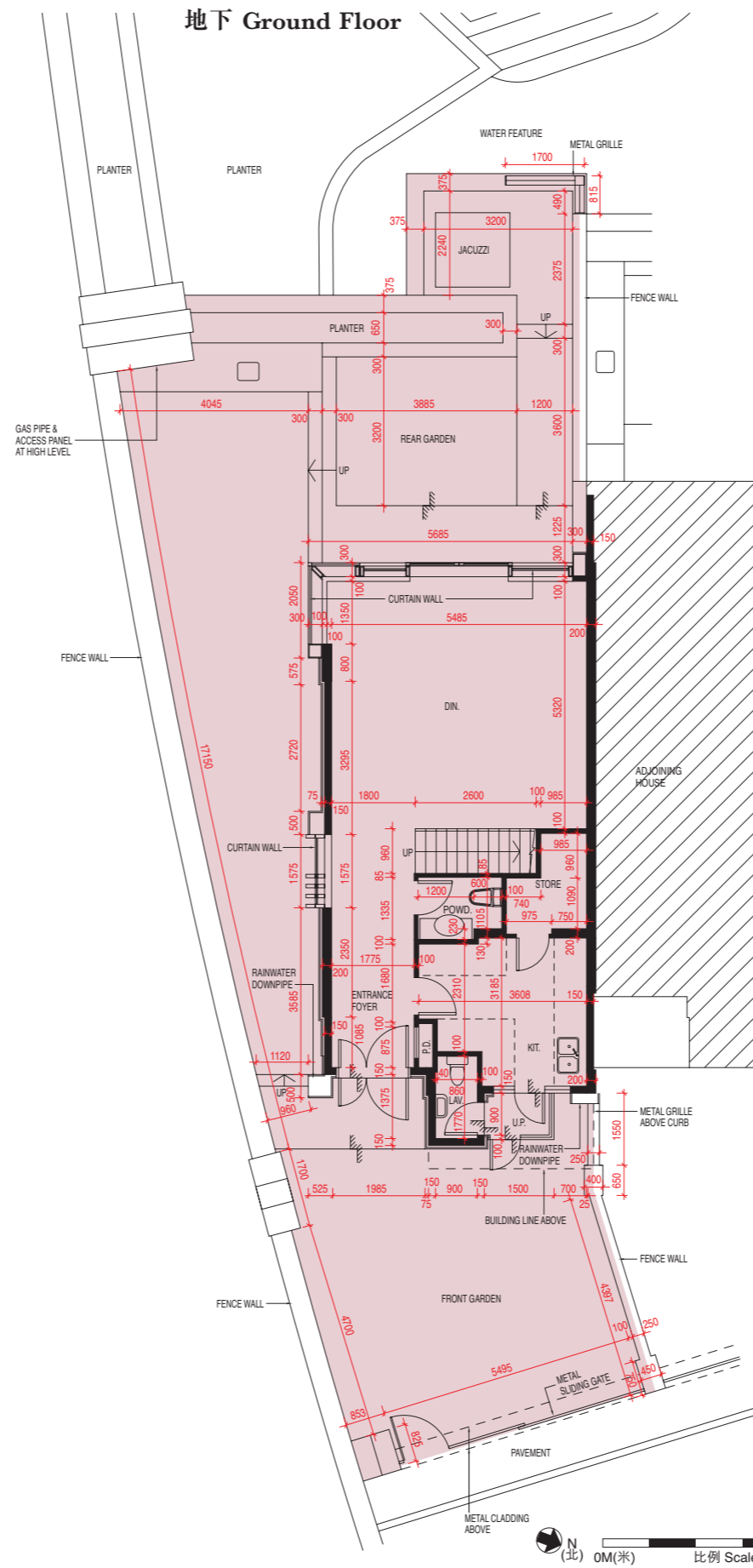
The internal areas of the residential properties on the upper floors will generally be slightly larger than those on the lower floors because of the reducing thickness of the structural walls on the upper floors. (Not applicable to the Development)

備註：

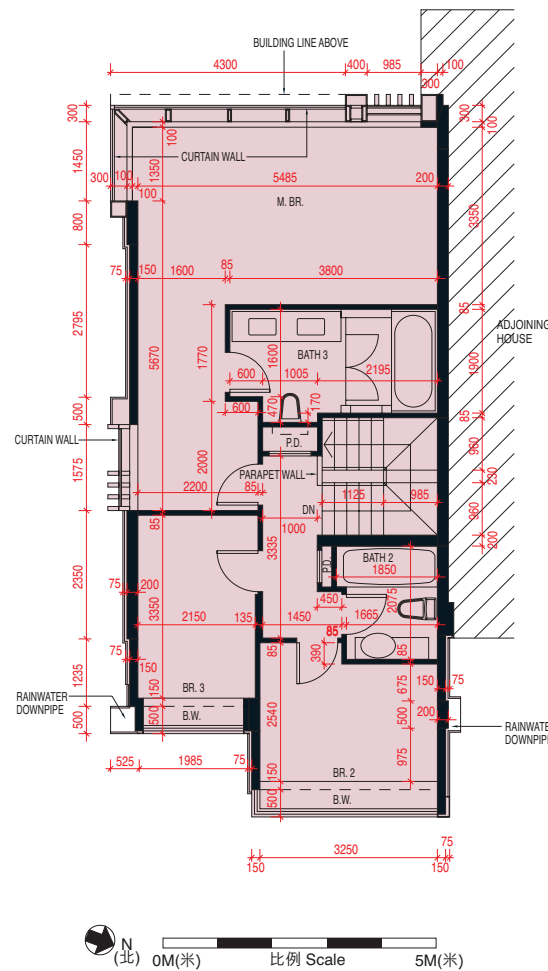
- 1) 住宅物業之天花高度將會因應其結構、建築及/或裝修設計上的差異而有所不同。
- 2) 以上樓面平面圖中顯示之名詞及簡稱之詞彙表請參閱本售樓說明書「發展項目的住宅物業的樓面平面圖」一節首頁。

Remarks:

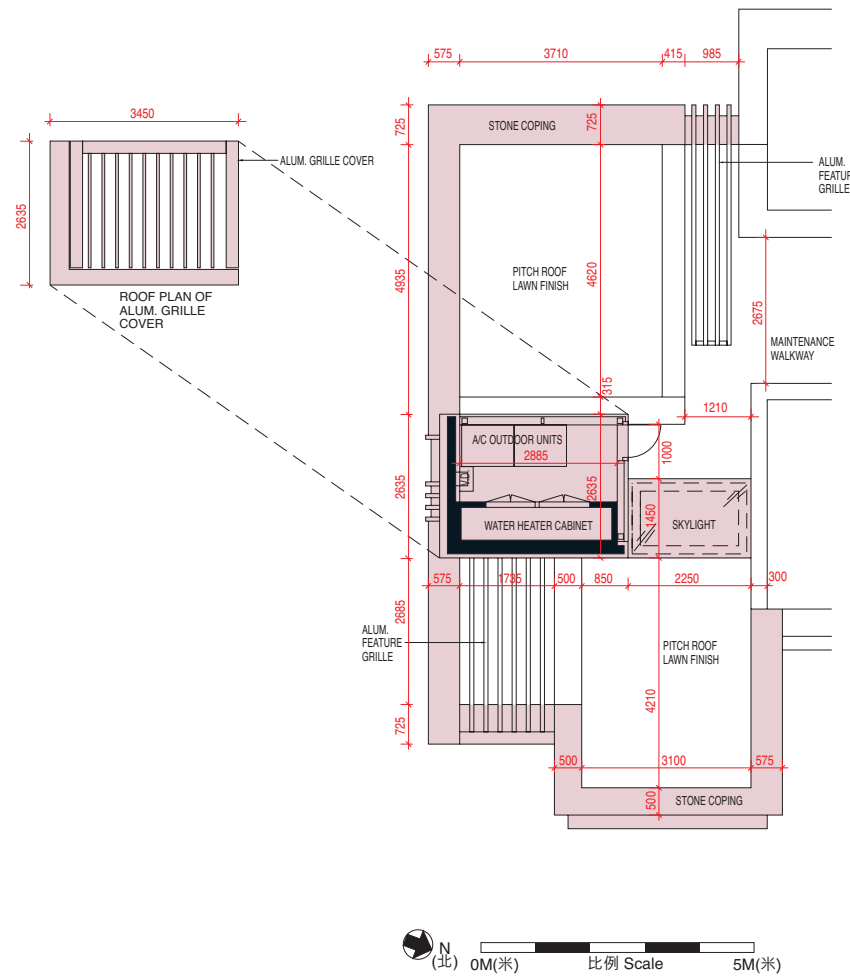
- 1) The internal ceiling height within residential properties may vary due to structural, architectural and/or decoration design variations.
- 2) Please refer to the first page of the section “Floor Plans of Residential Properties in the Development” of this sales brochure for glossary of the terms and abbreviations shown in the floor plan above.



2樓 2nd Floor



天台 Roof



層與層之間的高度：3.5米
Floor-to-floor height: 3.5m

樓板(不包括灰泥)的厚度：180毫米(適用於2樓)
Thickness of the floor slabs (excluding plaster):
180mm (applicable to 2nd Floor)

因住宅物業的較高樓層的結構牆的厚度遞減，較高樓層的內部面積，一般比較低樓層的內部面積稍大。
(不適用於本發展項目)

The internal areas of the residential properties on the upper floors will generally be slightly larger than those on the lower floors because of the reducing thickness of the structural walls on the upper floors. (Not applicable to the Development)

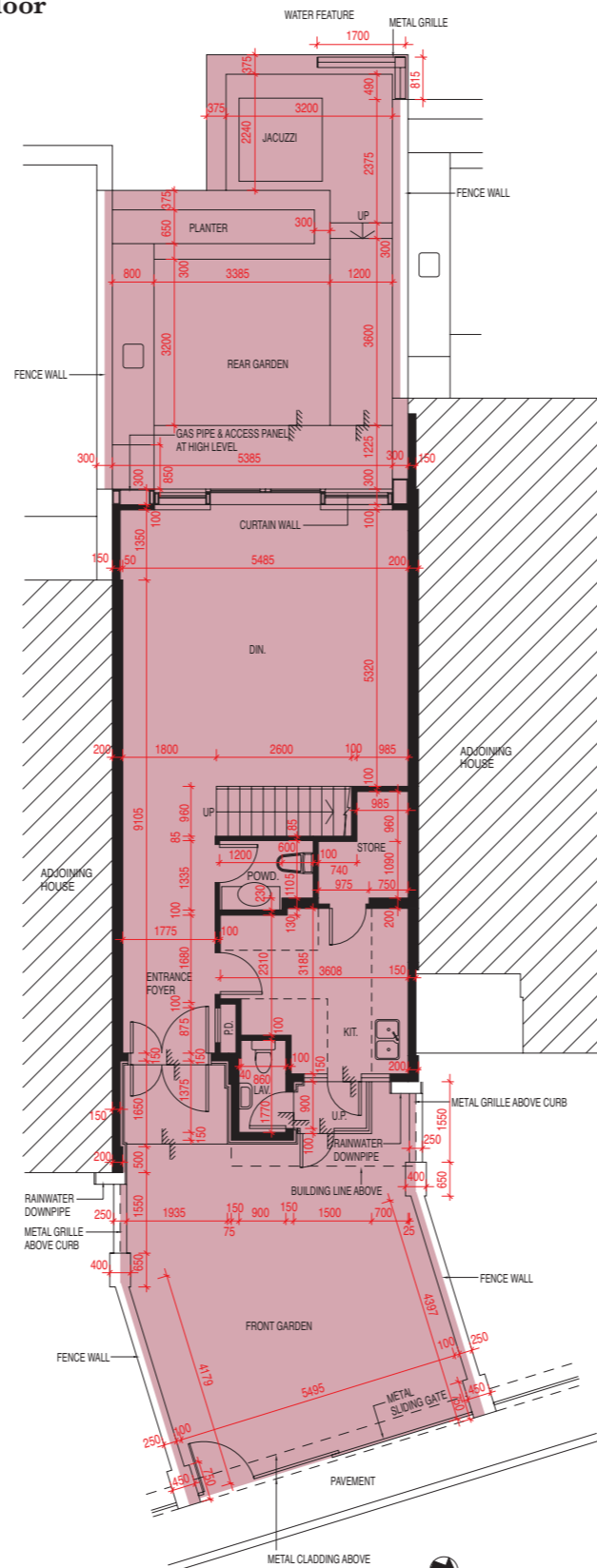
備註：

- 1) 住宅物業之天花高度將會因應其結構、建築及/或裝修設計上的差異而有所不同。
- 2) 以上樓面平面圖中顯示之名詞及簡稱之詞彙表請參閱本售樓說明書「發展項目的住宅物業的樓面平面圖」一節首頁。

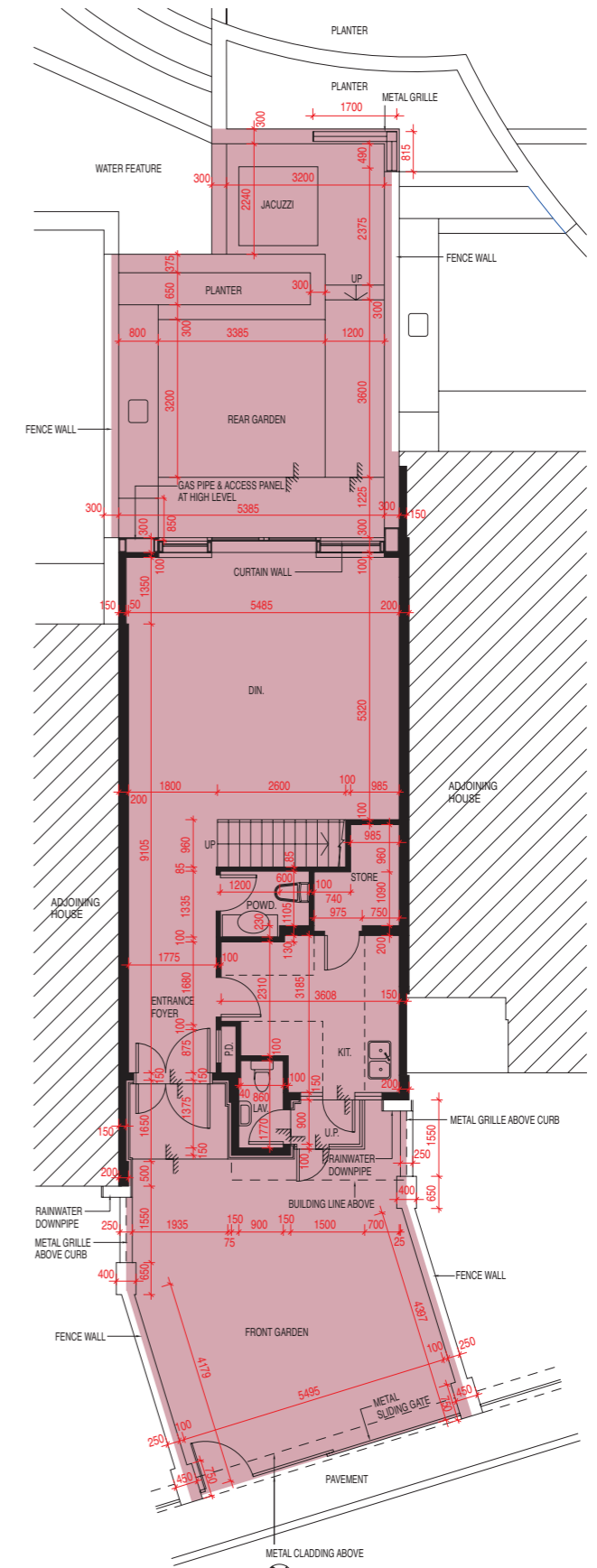
Remarks:

- 1) The internal ceiling height within residential properties may vary due to structural, architectural and/or decoration design variations.
- 2) Please refer to the first page of the section “Floor Plans of Residential Properties in the Development” of this sales brochure for glossary of the terms and abbreviations shown in the floor plan above.

2、5、7號洋房地下
House number 2, 5, 7
Ground Floor



9號洋房地下
House number 9
Ground Floor



層與層之間的高度：3.5米
Floor-to-floor height: 3.5m

樓板(不包括灰泥)的厚度：170毫米(適用於地下)
Thickness of the floor slabs (excluding plaster):
170mm (applicable to Ground Floor)

因住宅物業的較高樓層的結構牆的厚度遞減，較高樓層的內部面積，一般比較低樓層的內部面積稍大。
(不適用於本發展項目)

The internal areas of the residential properties on the upper floors will generally be slightly larger than those on the lower floors because of the reducing thickness of the structural walls on the upper floors. (Not applicable to the Development)

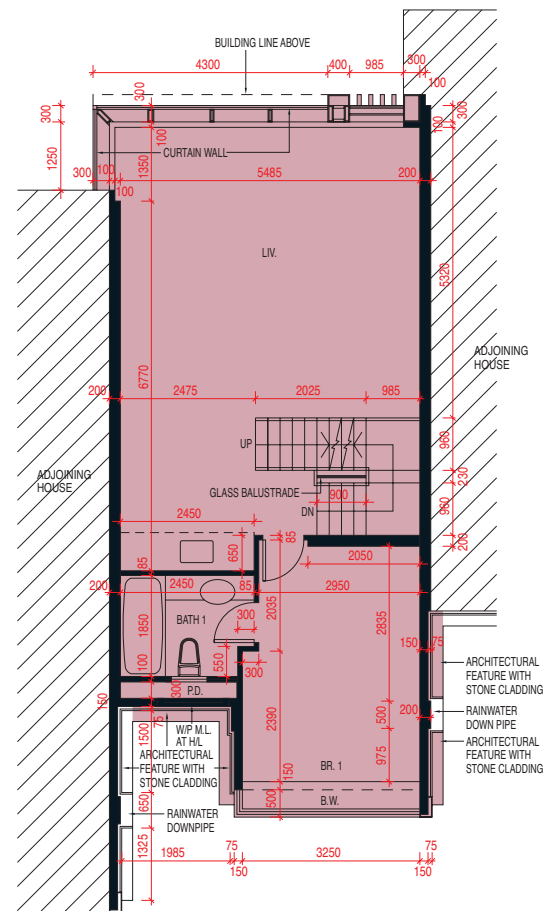
備註：

- 1) 住宅物業之天花高度將會因應其結構、建築及/或裝修設計上的差異而有所不同。
- 2) 以上樓面平面圖中顯示之名詞及簡稱之詞彙表請參閱本售樓說明書「發展項目的住宅物業的樓面平面圖」一節首頁。

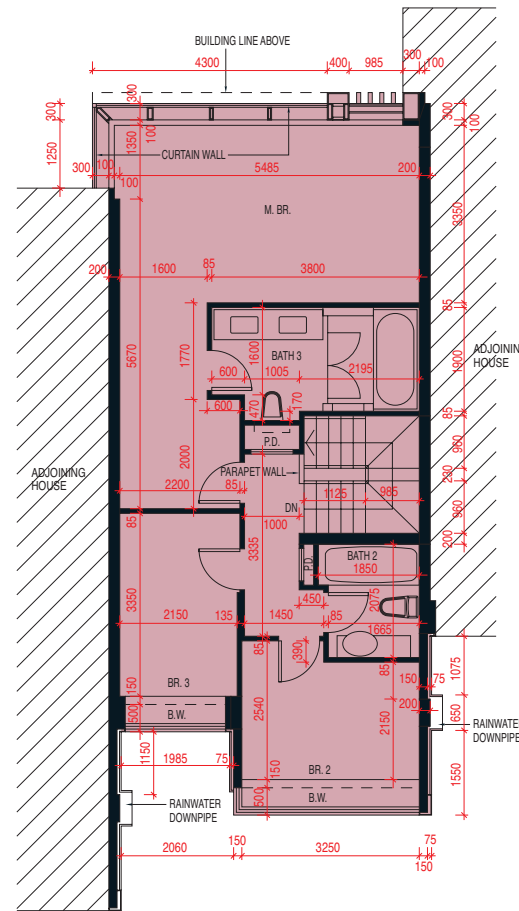
Remarks:

- 1) The internal ceiling height within residential properties may vary due to structural, architectural and/or decoration design variations.
- 2) Please refer to the first page of the section "Floor Plans of Residential Properties in the Development" of this sales brochure for glossary of the terms and abbreviations shown in the floor plan above.

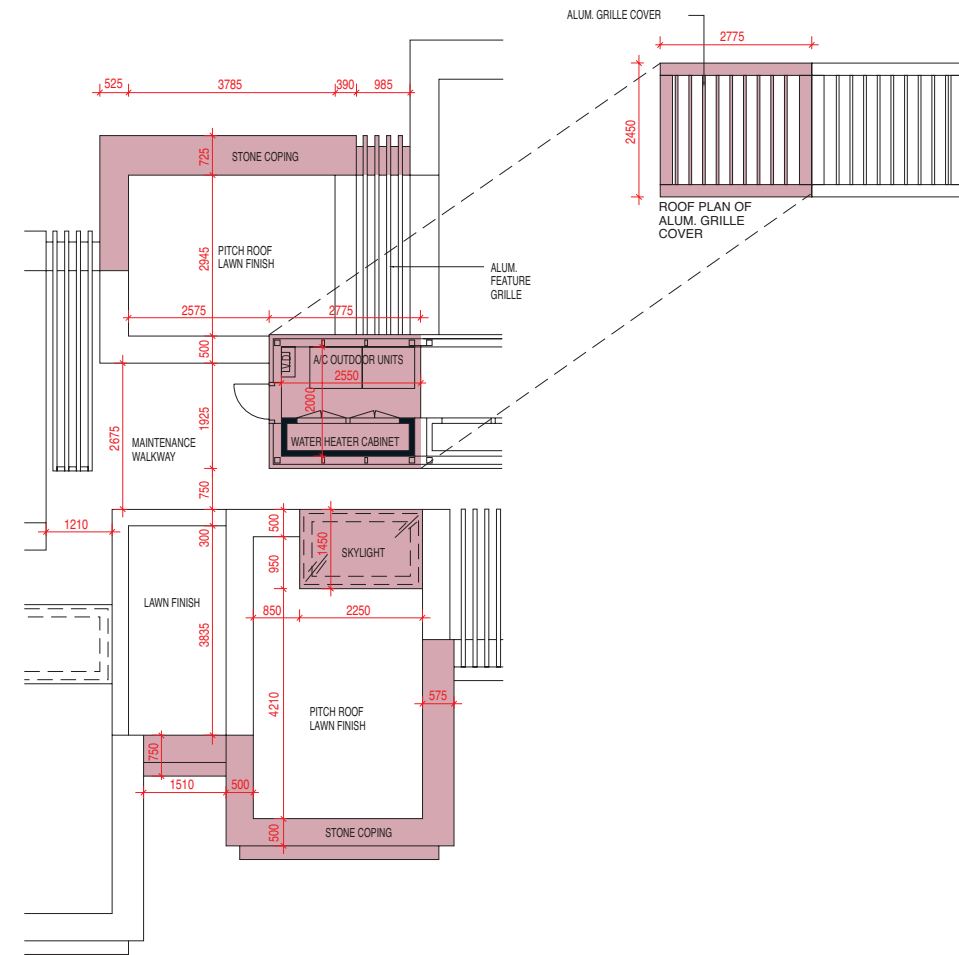
1樓 1st Floor



2樓 2nd Floor



天台 Roof



層與層之間的高度：3.5米

Floor-to-floor height: 3.5m

樓板(不包括灰泥)的厚度：170毫米(適用於1樓)；180毫米(適用於2樓)

Thickness of the floor slabs (excluding plaster): 170mm (applicable to 1st Floor); 180mm (applicable to 2nd Floor)

因住宅物業的較高樓層的結構牆的厚度遞減，較高樓層的內部面積，一般比較低樓層的內部面積稍大。(不適用於本發展項目)

The internal areas of the residential properties on the upper floors will generally be slightly larger than those on the lower floors because of the reducing thickness of the structural walls on the upper floors. (Not applicable to the Development)

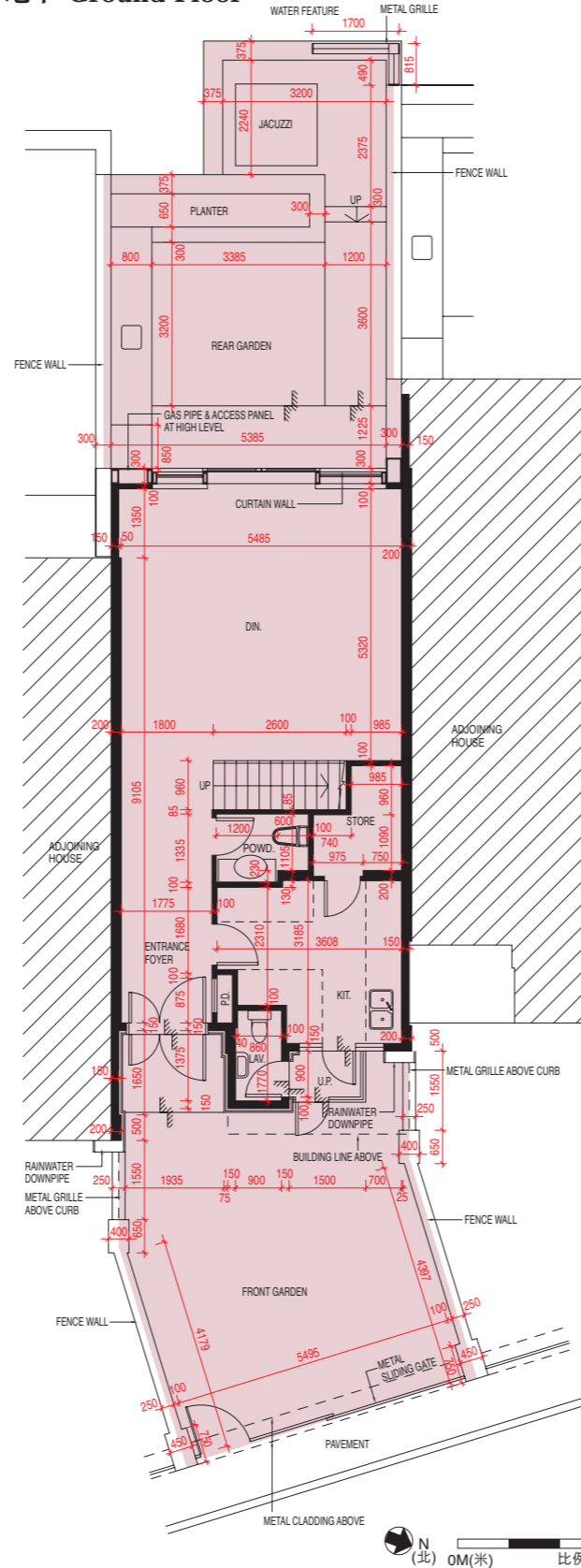
備註：

- 1) 住宅物業之天花高度將會因應其結構、建築及/或裝修設計上的差異而有所不同。
- 2) 以上樓面平面圖中顯示之名詞及簡稱之詞彙表請參閱本售樓說明書「發展項目的住宅物業的樓面平面圖」一節首頁。

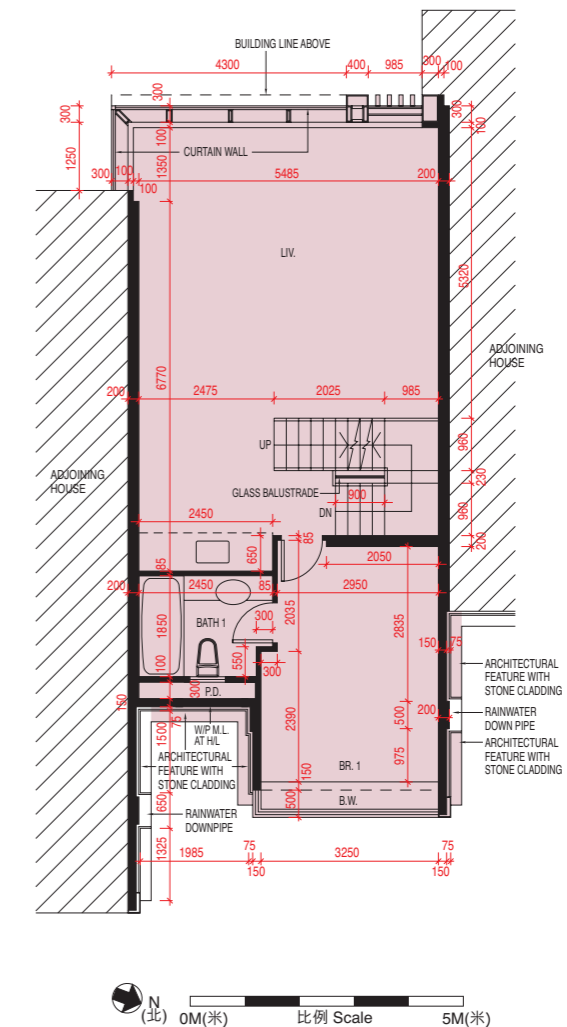
Remarks:

- 1) The internal ceiling height within residential properties may vary due to structural, architectural and/or decoration design variations.
- 2) Please refer to the first page of the section “Floor Plans of Residential Properties in the Development” of this sales brochure for glossary of the terms and abbreviations shown in the floor plan above.

地下 Ground Floor



1樓 1st Floor



層與層之間的高度：3.5米
Floor-to-floor height: 3.5m

樓板(不包括灰泥)的厚度：170毫米(適用於地下及1樓)
Thickness of the floor slabs (excluding plaster):
170mm (applicable to Ground Floor and 1st Floor)

因住宅物業的較高樓層的結構牆的厚度遞減，較高樓層的內部面積，一般比較低樓層的內部面積稍大。
(不適用於本發展項目)

The internal areas of the residential properties on the upper floors will generally be slightly larger than those on the lower floors because of the reducing thickness of the structural walls on the upper floors. (Not applicable to the Development)

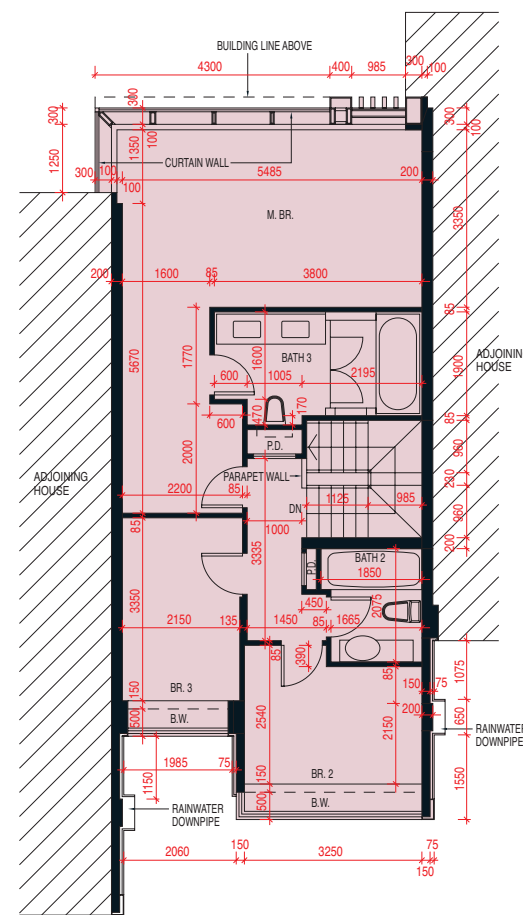
備註：

- 住宅物業之天花高度將會因應其結構、建築及/或裝修設計上的差異而有所不同。
- 以上樓面平面圖中顯示之名詞及簡稱之詞彙表請參閱本售樓說明書「發展項目的住宅物業的樓面平面圖」一節首頁。

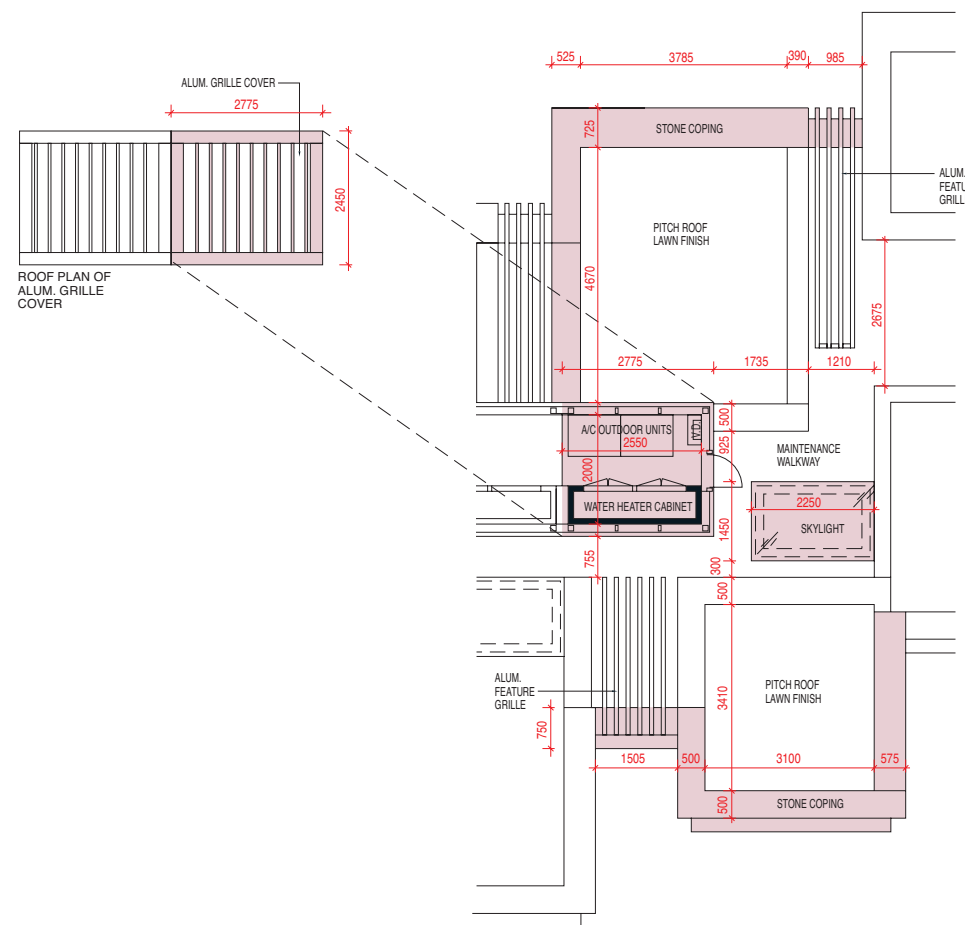
Remarks:

- The internal ceiling height within residential properties may vary due to structural, architectural and/or decoration design variations.
- Please refer to the first page of the section “Floor Plans of Residential Properties in the Development” of this sales brochure for glossary of the terms and abbreviations shown in the floor plan above.

2樓 2nd Floor



天台 Roof



層與層之間的高度：3.5米
Floor-to-floor height: 3.5m

樓板(不包括灰泥)的厚度：180毫米(適用於2樓)
Thickness of the floor slabs (excluding plaster): 180mm (applicable to 2nd Floor)

因住宅物業的較高樓層的結構牆的厚度遞減，較高樓層的內部面積，一般比較低樓層的內部面積稍大。
(不適用於本發展項目)

The internal areas of the residential properties on the upper floors will generally be slightly larger than those on the lower floors because of the reducing thickness of the structural walls on the upper floors. (Not applicable to the Development)

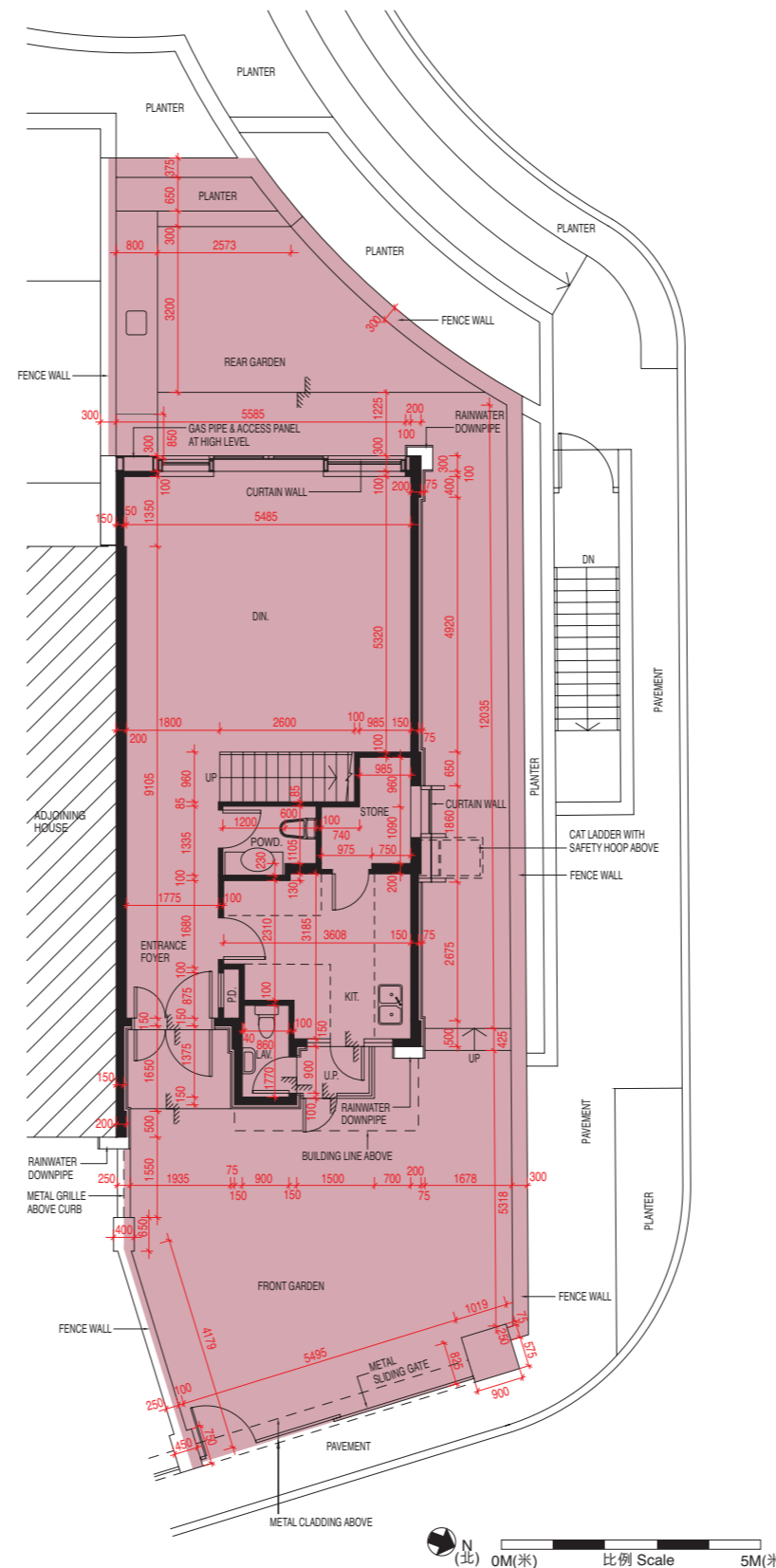
備註：

- 住宅物業之天花高度將會因應其結構、建築及/或裝修設計上的差異而有所不同。
- 以上樓面平面圖中顯示之名詞及簡稱之詞彙表請參閱本售樓說明書「發展項目的住宅物業的樓面平面圖」一節首頁。

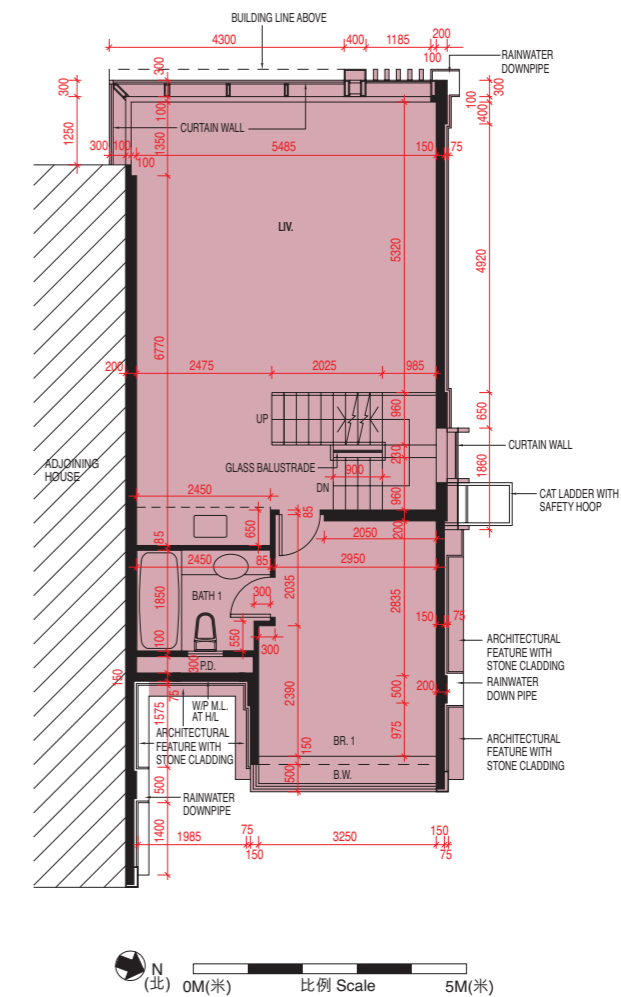
Remarks:

- The internal ceiling height within residential properties may vary due to structural, architectural and/or decoration design variations.
- Please refer to the first page of the section “Floor Plans of Residential Properties in the Development” of this sales brochure for glossary of the terms and abbreviations shown in the floor plan above.

地下 Ground Floor



1樓 1st Floor



層與層之間的高度：3.5米
Floor-to-floor height: 3.5m

樓板(不包括灰泥)的厚度：170毫米(適用於地下及1樓)
Thickness of the floor slabs (excluding plaster):
170mm (applicable to Ground Floor and 1st Floor)

因住宅物業的較高樓層的結構牆的厚度遞減，較高樓層的內部面積，一般比較低樓層的內部面積稍大。
(不適用於本發展項目)

The internal areas of the residential properties on the upper floors will generally be slightly larger than those on the lower floors because of the reducing thickness of the structural walls on the upper floors. (Not applicable to the Development)

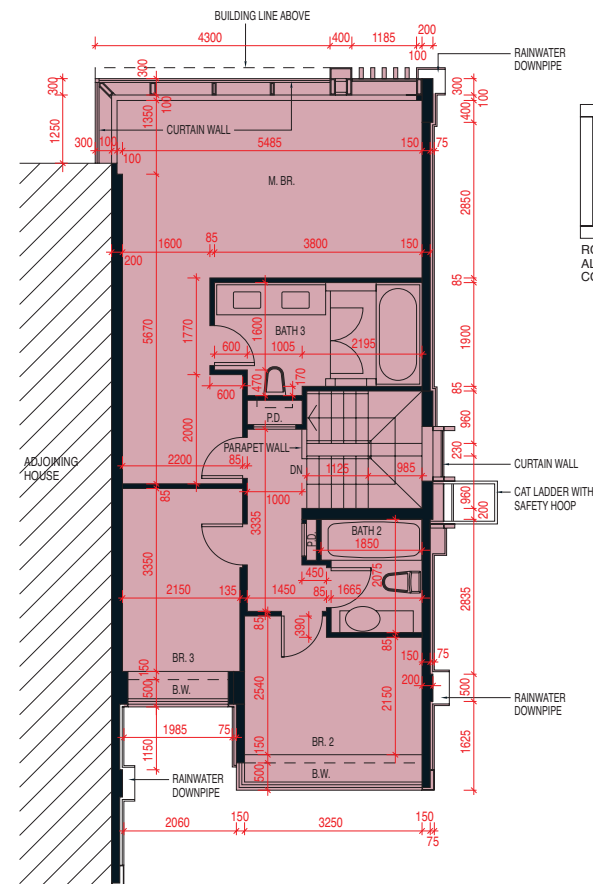
備註：

- 1) 住宅物業之天花高度將會因應其結構、建築及/或裝修設計上的差異而有所不同。
- 2) 以上樓面平面圖中顯示之名詞及簡稱之詞彙表請參閱本售樓說明書「發展項目的住宅物業的樓面平面圖」一節首頁。

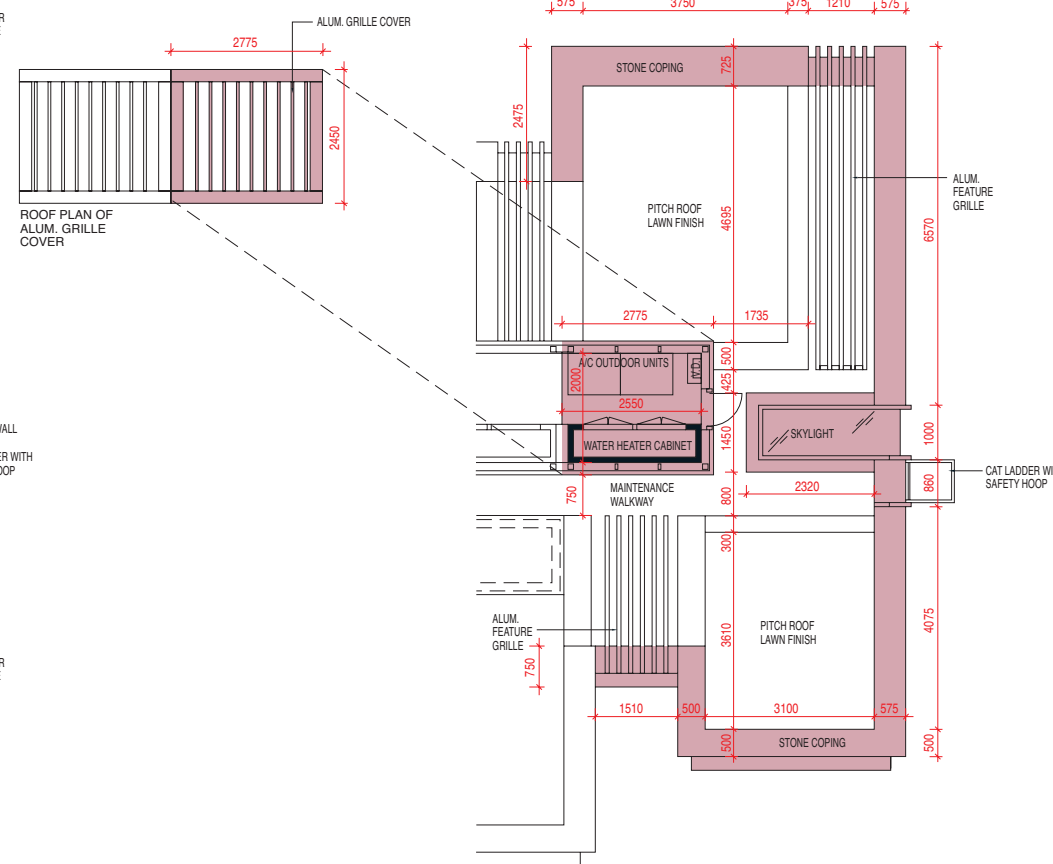
Remarks:

- 1) The internal ceiling height within residential properties may vary due to structural, architectural and/or decoration design variations.
- 2) Please refer to the first page of the section “Floor Plans of Residential Properties in the Development” of this sales brochure for glossary of the terms and abbreviations shown in the floor plan above.

2樓 2nd Floor



天台 Roof



層與層之間的高度：3.5米
Floor-to-floor height: 3.5m

樓板(不包括灰泥)的厚度：180毫米(適用於2樓)
Thickness of the floor slabs (excluding plaster):
180mm (applicable to 2nd Floor)

因住宅物業的較高樓層的結構牆的厚度遞減，較高樓層的內部面積，一般比較低樓層的內部面積稍大。
(不適用於本發展項目)

The internal areas of the residential properties on the upper floors will generally be slightly larger than those on the lower floors because of the reducing thickness of the structural walls on the upper floors. (Not applicable to the Development)

備註：

- 住宅物業之天花高度將會因應其結構、建築及/或裝修設計上的差異而有所不同。
- 以上樓面平面圖中顯示之名詞及簡稱之詞彙表請參閱本售樓說明書「發展項目的住宅物業的樓面平面圖」一節首頁。

Remarks:

- The internal ceiling height within residential properties may vary due to structural, architectural and/or decoration design variations.
- Please refer to the first page of the section “Floor Plans of Residential Properties in the Development” of this sales brochure for glossary of the terms and abbreviations shown in the floor plan above.