

# 10

FLOOR PLANS OF RESIDENTIAL PROPERTIES IN THE DEVELOPMENT

發展項目的住宅物業的樓面平面圖

# 10 FLOOR PLANS OF RESIDENTIAL PROPERTIES IN THE DEVELOPMENT

## 發展項目的住宅物業的樓面平面圖

### Legend 圖例

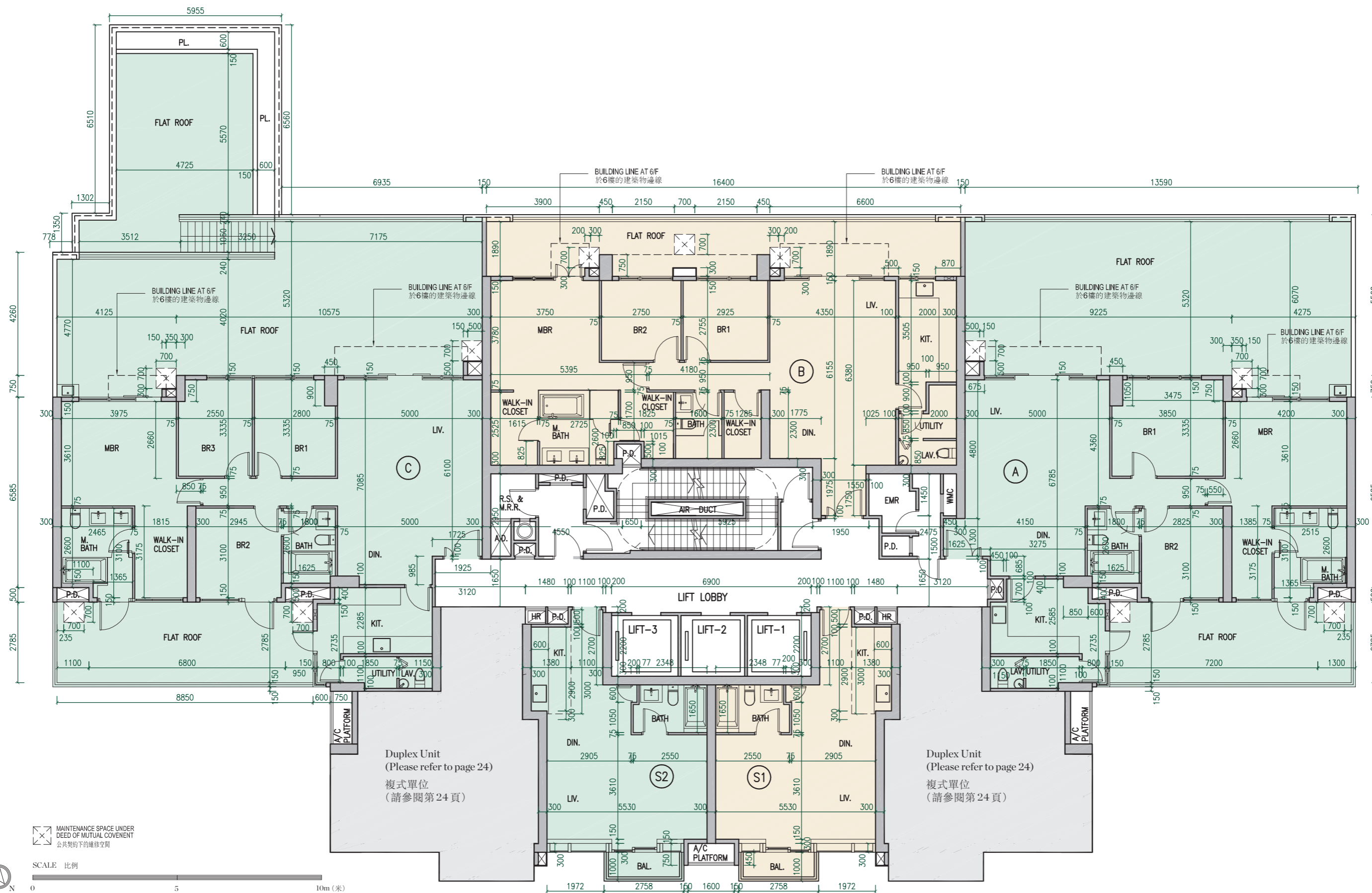
A.D.	Air Duct	風管
A/C Platform	Air-Conditioning Platform	冷氣機平台
Air Duct	Air Duct	風喉
Bal.	Balcony	露台
Bath	Bathroom	浴室
BR	Bedroom	睡房
Din.	Dining Room	飯廳
EMR	Electrical Meter Room	電錶房
Flat Roof	Flat Roof	平台
Games Rm.	Games Room	遊戲室
HR	Hose Reel	消防喉轆
HR at H/L	Hose Reel at High Level	消防喉轆於上方
Kit.	Kitchen	廚房
Lav.	Lavatory	化妝間
Lift	Lift	電梯
Lift Machine Rm	Lift Machines Room	電梯機房
Lift Lobby	Lift Lobby	電梯大堂
Liv.	Living Room	客廳
M. Bath	Master Bathroom	主人浴室
MBR	Master Bedroom	主人睡房
Multi-Function Room	Multi-Function Room	多功能廳
P.D.	Pipe Duct	管井
PL.	Planter	花槽
R.S. & M.R.R.	Refuse Storage and Material Recovery Room	垃圾及物料回收房
Study	Study Room	書房
Store	Store Room	儲物房
UP	Utility Platform	工作平台
Utility	Utility Room	多用途房
Walk-In Closet	Walk-In Closet	衣帽間
WMC	Water Meter Cabinet	水錶櫃

# 10 FLOOR PLANS OF RESIDENTIAL PROPERTIES IN THE DEVELOPMENT

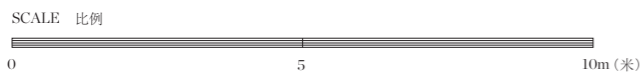
## 發展項目的住宅物業的樓面平面圖

5/F Floor Plan

5樓單位平面圖



MAINTENANCE SPACE UNDER DEED OF MUTUAL COVENENT  
公共契約下的維修空間



# 10 FLOOR PLANS OF RESIDENTIAL PROPERTIES IN THE DEVELOPMENT

## 發展項目的住宅物業的樓面平面圖

5/F Floor Plan

5樓單位平面圖

	Floor 樓層	Units 單位				
		A	B	C	S1	S2
The thickness of the floor slabs (excluding plaster) of each residential property (mm) 每個住宅物業的樓板（不包括灰泥）的厚度（毫米）		150,200	150,200	150,200	150,200	150,200
The floor-to-floor height (refers to the height between the top surface of the structural slab of a floor and the top surface of the structural slab of its immediate upper floor) of each residential property (mm) 每個住宅物業的層與層之間的高度（指該樓層之石屎地台面與上一層石屎地台面之高度距離）（毫米）	5/F 5樓	3,000, 3,150, 3,250, 3,500	3,000, 3,500	3,000, 3,150, 3,250, 3,500	3,000, 3,150, 3,500	3,000, 3,150, 3,500

Notes:

1. The internal areas of the residential properties on the upper floors will generally be slightly larger than those on the lower floors because of the reducing thickness of the structural walls on the upper floors.
2. The dimensions in the floor plans are all structural dimensions in millimetre.

附註：

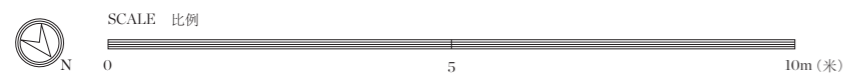
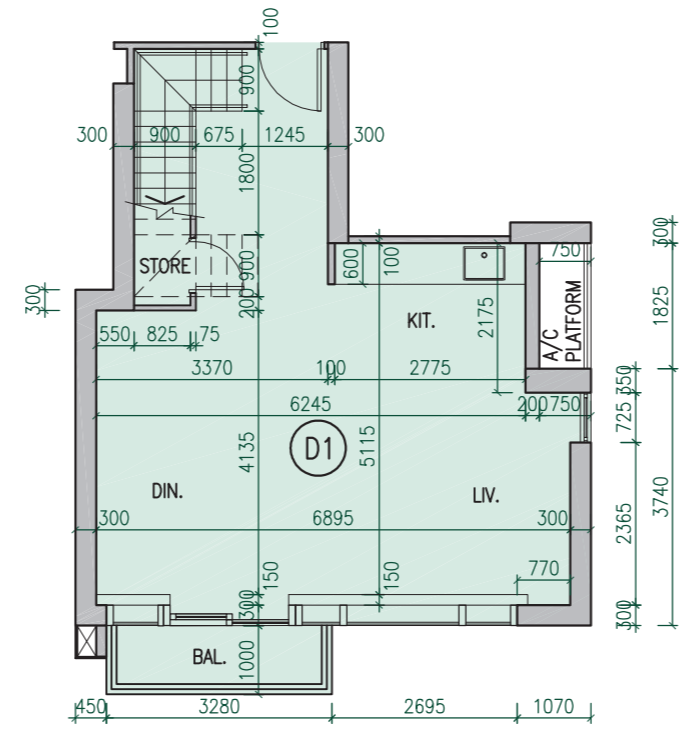
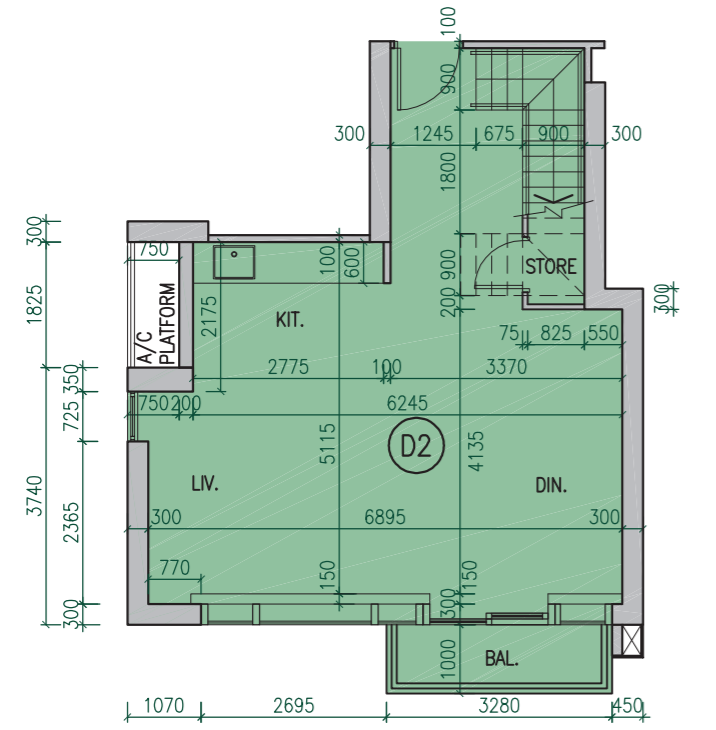
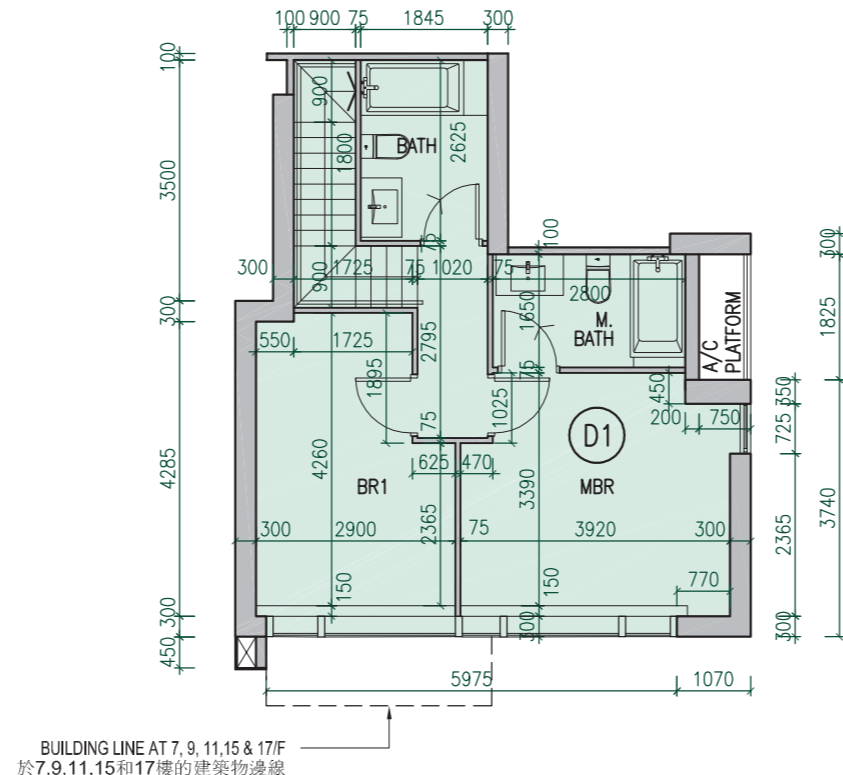
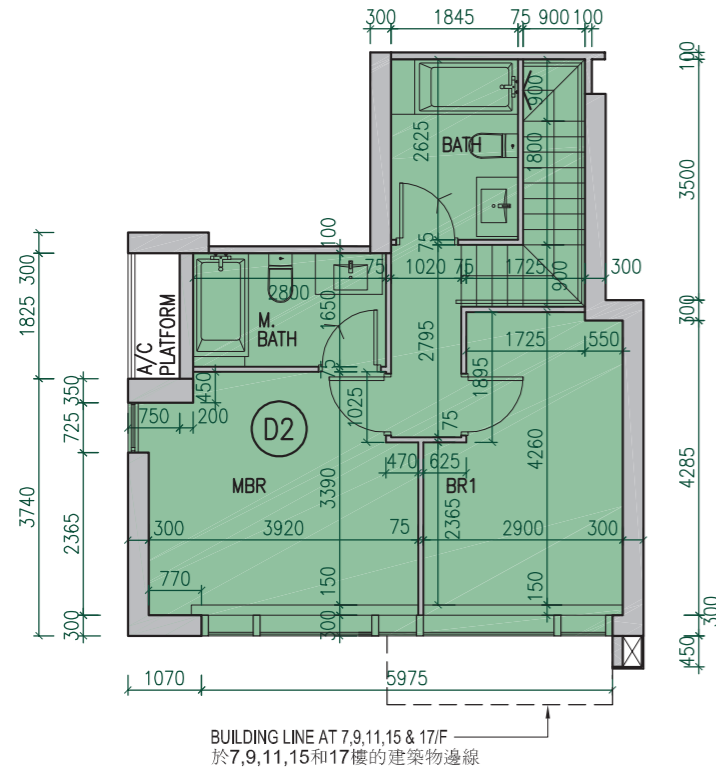
1. 因住宅物業的較高樓層的結構牆的厚度遞減，較高樓層的內部面積，一般比較低樓層的內部面積稍大。
2. 樓面平面圖所列之尺寸為以毫米標示之建築結構尺寸。

# 10 FLOOR PLANS OF RESIDENTIAL PROPERTIES IN THE DEVELOPMENT

## 發展項目的住宅物業的樓面平面圖

5/F, 7/F, 9/F, 11/F, 15/F Duplex Floor Plan

5樓, 7樓, 9樓, 11樓, 15樓複式單位平面圖



# 10 FLOOR PLANS OF RESIDENTIAL PROPERTIES IN THE DEVELOPMENT

## 發展項目的住宅物業的樓面平面圖

5/F, 7/F, 9/F, 11/F, 15/F Duplex Floor Plan

5樓, 7樓, 9樓, 11樓, 15樓複式單位平面圖

Floor 樓層	Units 單位	
	D1	D2
The thickness of the floor slabs (excluding plaster) of each residential property (mm) 每個住宅物業的樓板 (不包括灰泥) 的厚度 (毫米)	150, 200	150, 200
The floor-to-floor height (refers to the height between the top surface of the structural slab of a floor and the top surface of the structural slab of its immediate upper floor) of each residential property (mm) 每個住宅物業的層與層之間的高度 (指該樓層之石屎地台面與上一層石屎地台面之高度距離) (毫米)	3,000, 3,500	3,000, 3,500

Notes:

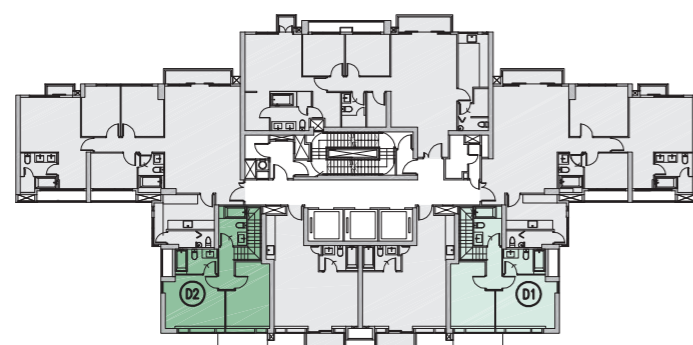
- The internal areas of the residential properties on the upper floors will generally be slightly larger than those on the lower floors because of the reducing thickness of the structural walls on the upper floors.
- The dimensions in the floor plans are all structural dimensions in millimetre.

附註:

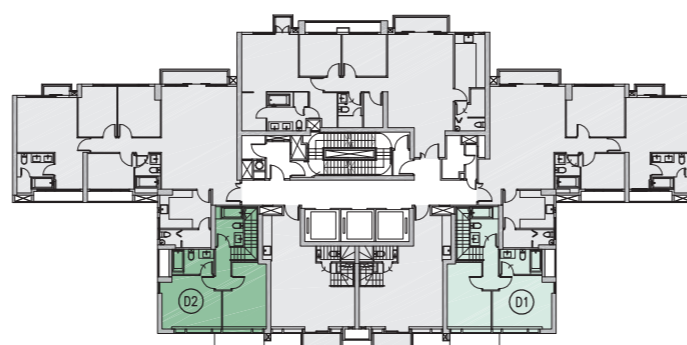
- 因住宅物業的較高樓層的結構牆的厚度遞減, 較高樓層的內部面積, 一般比較低樓層的內部面積稍大。
- 樓面平面圖所列之尺寸為以毫米標示之建築結構尺寸。

### Key plans

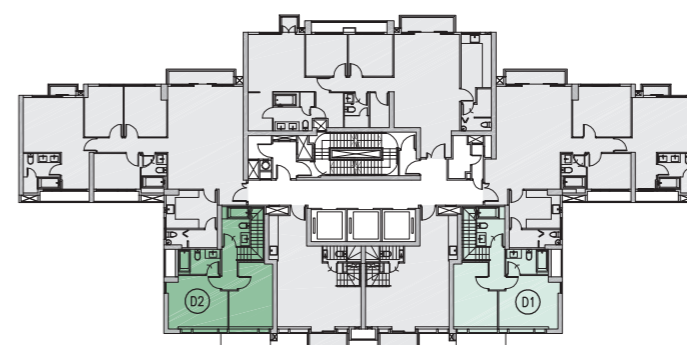
指示圖



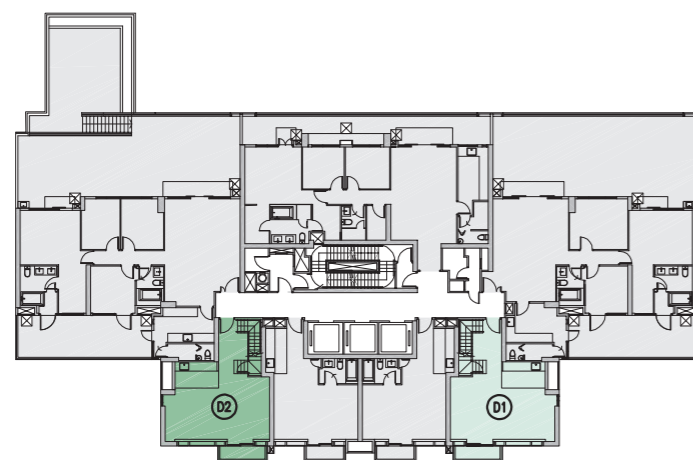
6/F  
6樓



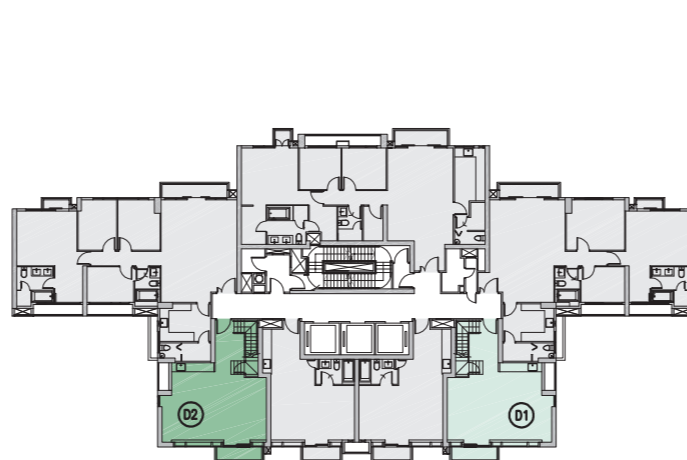
8/F  
8樓



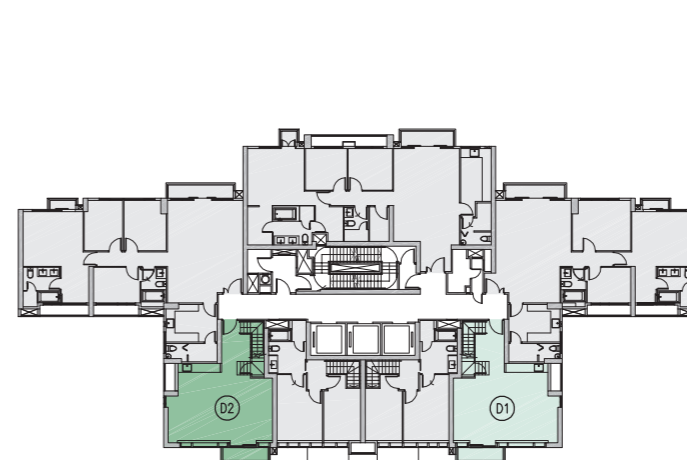
10/F, 12/F, 16/F  
10樓, 12樓, 16樓



5/F  
5樓



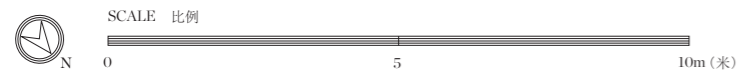
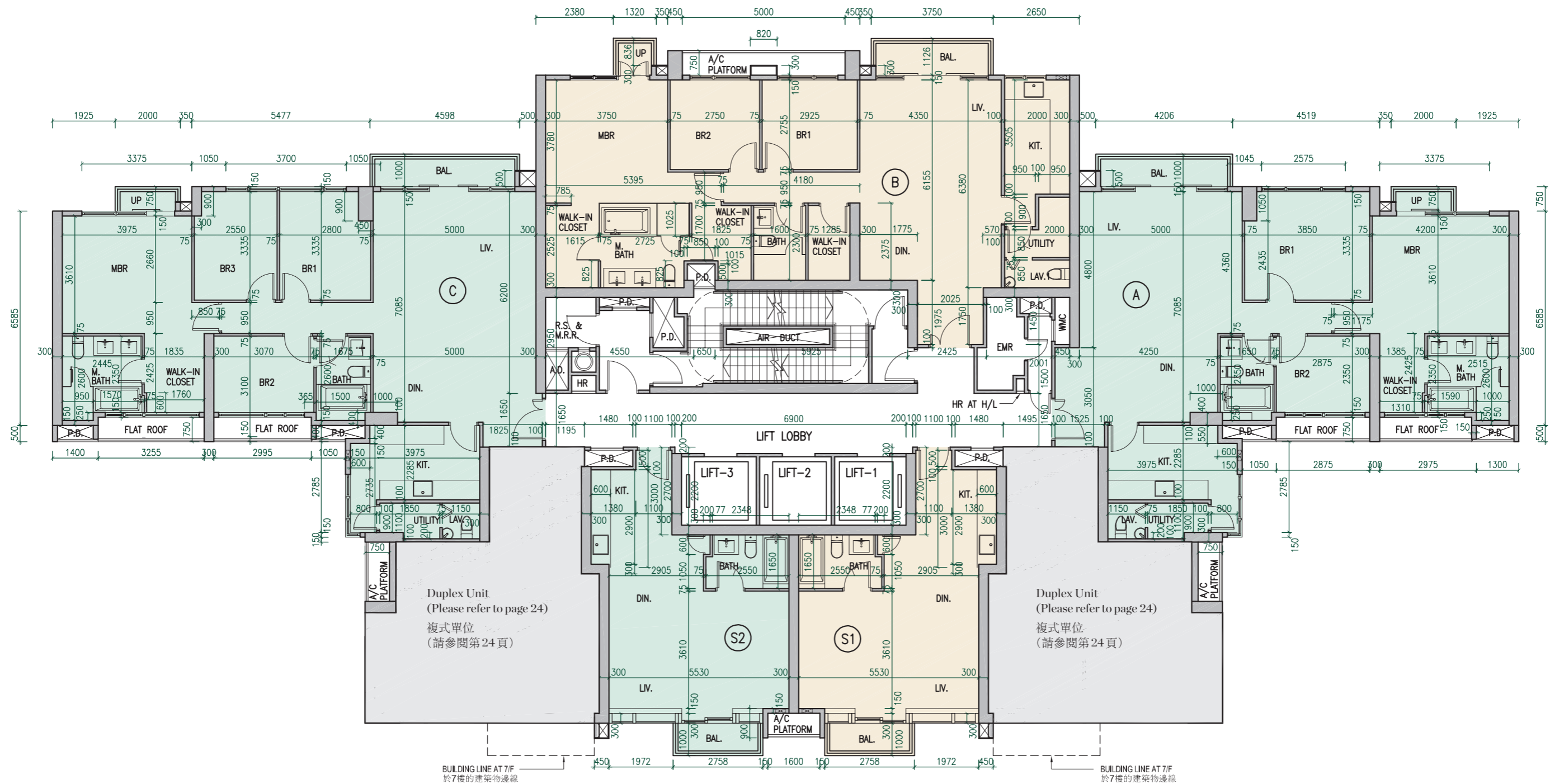
7/F  
7樓



9/F, 11/F, 15/F  
9樓, 11樓, 15樓

30/F	A			
29/F	C			
28/F	C	D	A	
27/F	C	D	A	
26/F	C	D2	D1	A
25/F	C	D2	D1	A
23/F	C	D2	D1	A
22/F	C	D2	D1	A
21/F	C	D2	D1	A
20/F	C	D2	D1	A
19/F	C	D2	D1	A
18/F	C	D2	D1	A
17/F	C	D2	D1	A
16/F	C	D2	D1	A
15/F	C	D2	D1	A
12/F	C	D2	D1	A
11/F	C	D2	D1	A
10/F	C	D2	D1	A
9/F	C	D2	D1	A
8/F	C	D2	D1	A
7/F	C	D2	S2	S1
6/F	C	D2	S2	S1
5/F	C	D2	S2	S1
3/F				
2/F				
1/F				
UG/F				
G/F				

Residential floors start from 5/F.  
13/F, 14/F and 24/F are omitted.  
住宅樓層由5樓開始。  
不設13樓, 14樓及24樓。



# 10 FLOOR PLANS OF RESIDENTIAL PROPERTIES IN THE DEVELOPMENT

## 發展項目的住宅物業的樓面平面圖

6/F Floor Plan

6樓單位平面圖

	Floor 樓層	Units 單位				
		A	B	C	S1	S2
The thickness of the floor slabs (excluding plaster) of each residential property (mm) 每個住宅物業的樓板（不包括灰泥）的厚度（毫米）		150,200	150,200	150,200	150,200	150,200
The floor-to-floor height (refers to the height between the top surface of the structural slab of a floor and the top surface of the structural slab of its immediate upper floor) of each residential property (mm) 每個住宅物業的層與層之間的高度（指該樓層之石屎地台面與上一層石屎地台面之高度距離）（毫米）	6/F 6樓	3,000, 3,250, 3,500, 3,850	3,500	3,000, 3,250, 3,500, 3,850	3,500, 4,000	3,500, 4,000

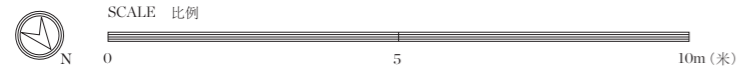
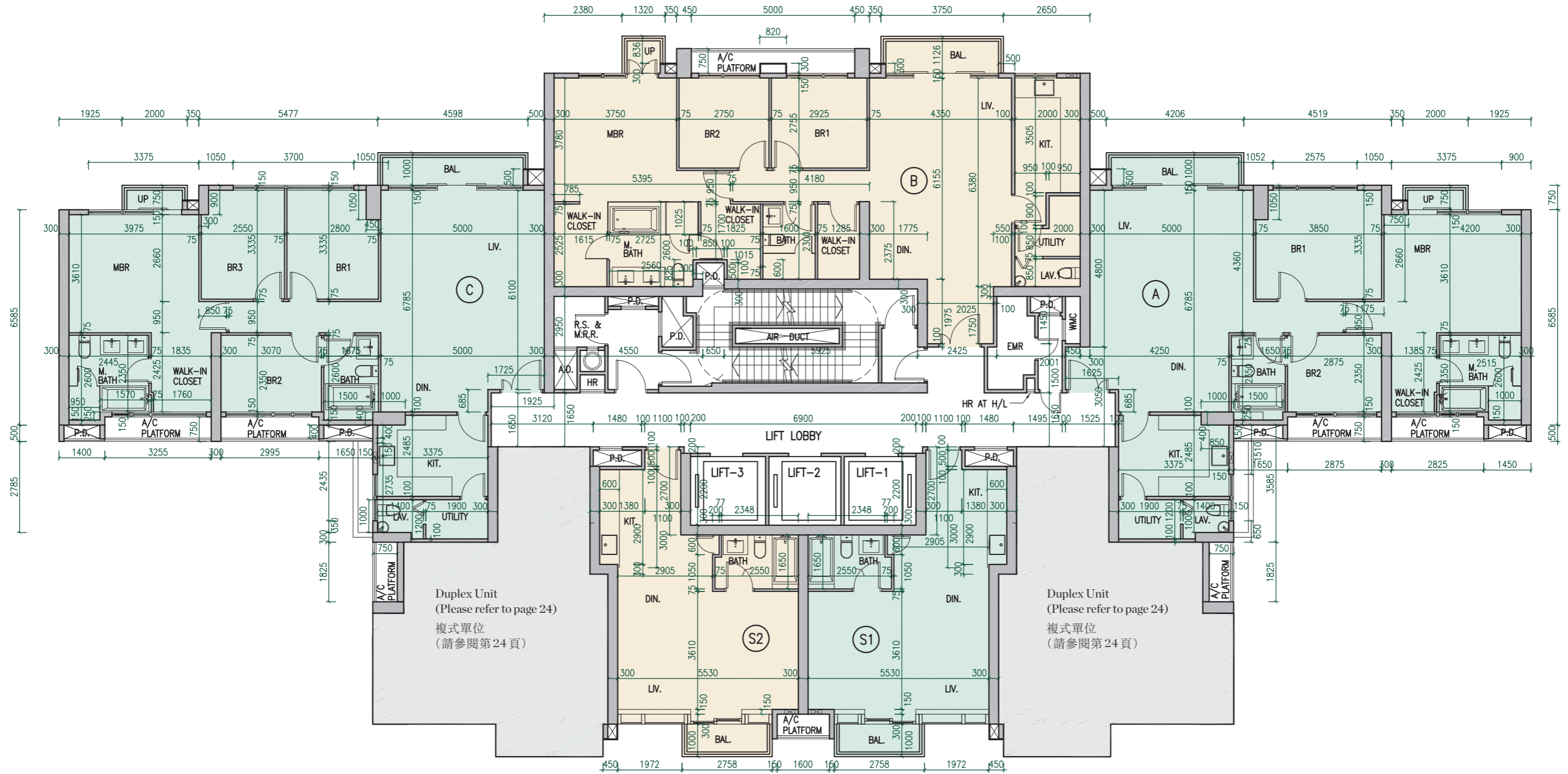
Notes:

1. The internal areas of the residential properties on the upper floors will generally be slightly larger than those on the lower floors because of the reducing thickness of the structural walls on the upper floors.
2. The dimensions in the floor plans are all structural dimensions in millimetre.

附註：

1. 因住宅物業的較高樓層的結構牆的厚度遞減，較高樓層的內部面積，一般比較低樓層的內部面積稍大。
2. 樓面平面圖所列之尺寸為以毫米標示之建築結構尺寸。





# 10 FLOOR PLANS OF RESIDENTIAL PROPERTIES IN THE DEVELOPMENT

## 發展項目的住宅物業的樓面平面圖

7/F Floor Plan

7樓單位平面圖

	Floor 樓層	Units 單位				
		A	B	C	S1	S2
The thickness of the floor slabs (excluding plaster) of each residential property (mm) 每個住宅物業的樓板（不包括灰泥）的厚度（毫米）		150,200	150,200	150,200	150,200	150,200
The floor-to-floor height (refers to the height between the top surface of the structural slab of a floor and the top surface of the structural slab of its immediate upper floor) of each residential property (mm) 每個住宅物業的層與層之間的高度（指該樓層之石屎地台面與上一層石屎地台面之高度距離）（毫米）	7/F 7樓	3,500	3,500	3,500	3,000, 3,500	3,000, 3,500

Notes:

1. The internal areas of the residential properties on the upper floors will generally be slightly larger than those on the lower floors because of the reducing thickness of the structural walls on the upper floors.
2. The dimensions in the floor plans are all structural dimensions in millimetre.

附註：

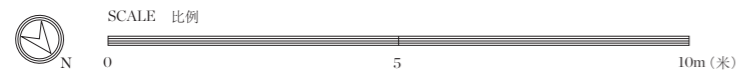
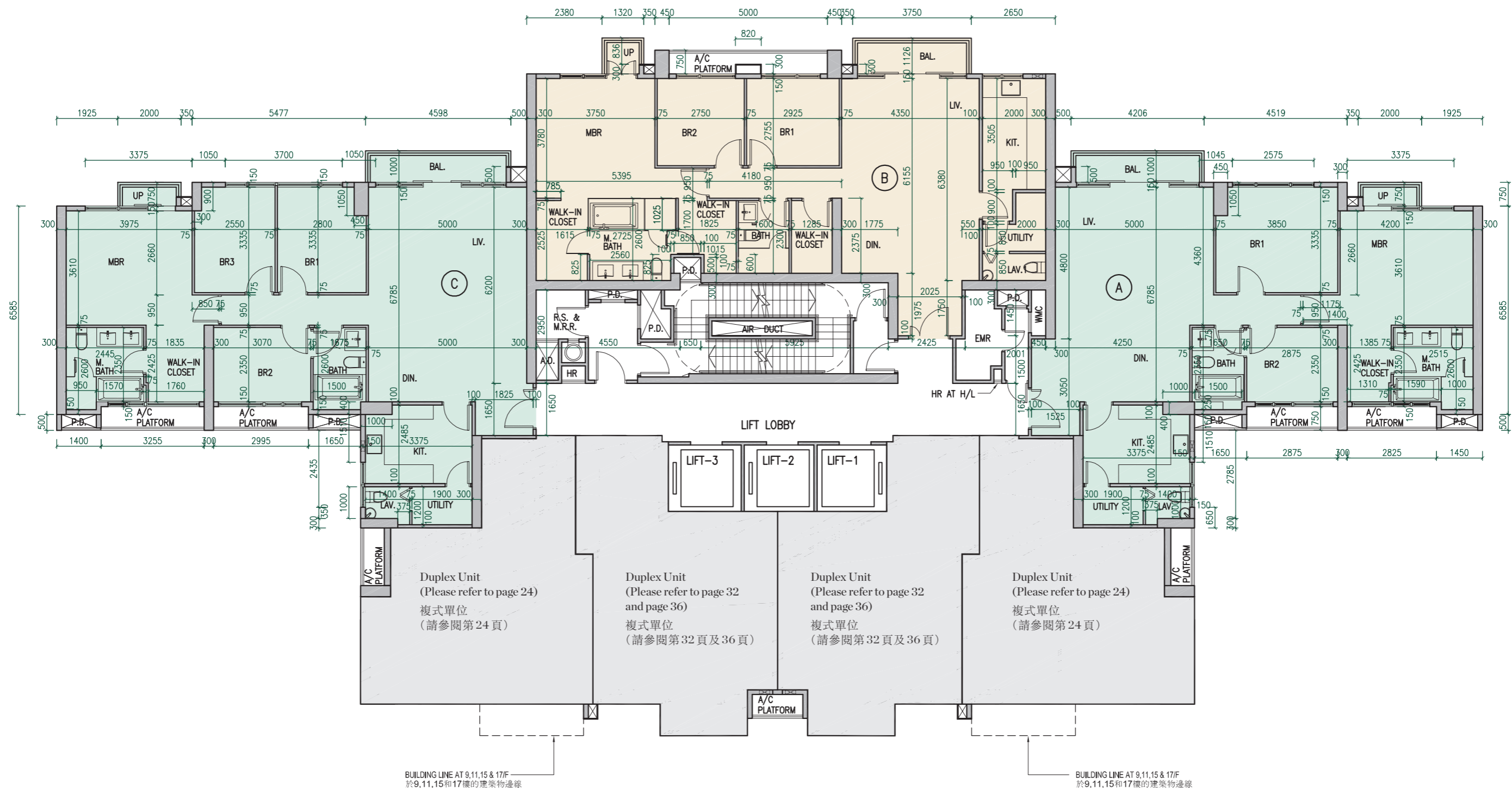
1. 因住宅物業的較高樓層的結構牆的厚度遞減，較高樓層的內部面積，一般比較低樓層的內部面積稍大。
2. 樓面平面圖所列之尺寸為以毫米標示之建築結構尺寸。

# 10 FLOOR PLANS OF RESIDENTIAL PROPERTIES IN THE DEVELOPMENT

## 發展項目的住宅物業的樓面平面圖

8/F, 10/F, 12/F, 16/F Floor Plan

8樓, 10樓, 12樓, 16樓單位平面圖



# 10 FLOOR PLANS OF RESIDENTIAL PROPERTIES IN THE DEVELOPMENT

## 發展項目的住宅物業的樓面平面圖

8/F, 10/F, 12/F, 16/F Floor Plan

8樓, 10樓, 12樓, 16樓單位平面圖

	Floor 樓層	Units 單位		
		A	B	C
The thickness of the floor slabs (excluding plaster) of each residential property (mm) 每個住宅物業的樓板 (不包括灰泥) 的厚度 (毫米)		150,200	150,200	150,200
The floor-to-floor height (refers to the height between the top surface of the structural slab of a floor and the top surface of the structural slab of its immediate upper floor) of each residential property (mm) 每個住宅物業的層與層之間的高度 (指該樓層之石屎地台面與上一層石屎地台面之高度距離) (毫米)	8/F, 10/F, 12/F, 16/F 8樓, 10樓, 12樓, 16樓	3,500	3,500	3,500

Notes:

1. The internal areas of the residential properties on the upper floors will generally be slightly larger than those on the lower floors because of the reducing thickness of the structural walls on the upper floors.
2. The dimensions in the floor plans are all structural dimensions in millimetre.

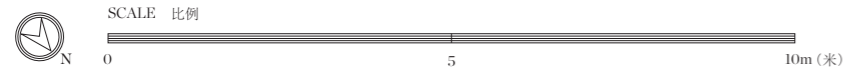
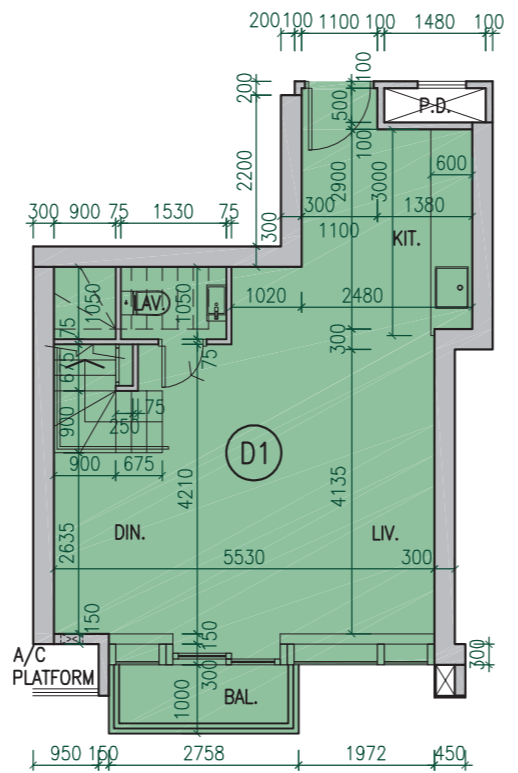
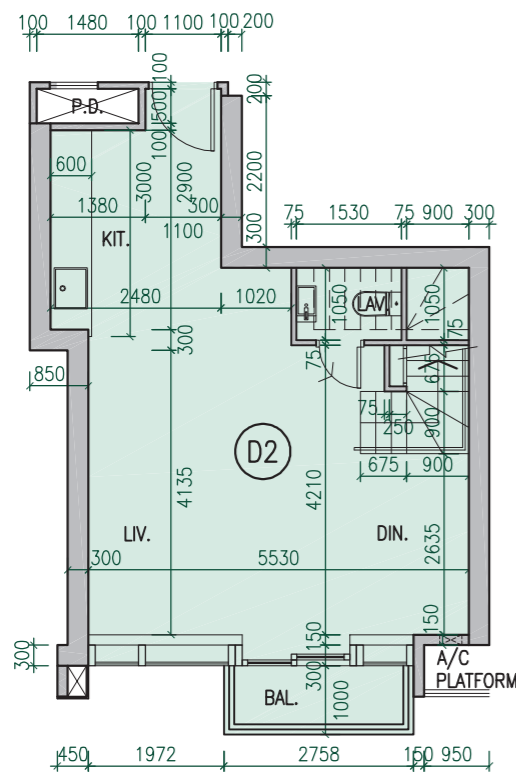
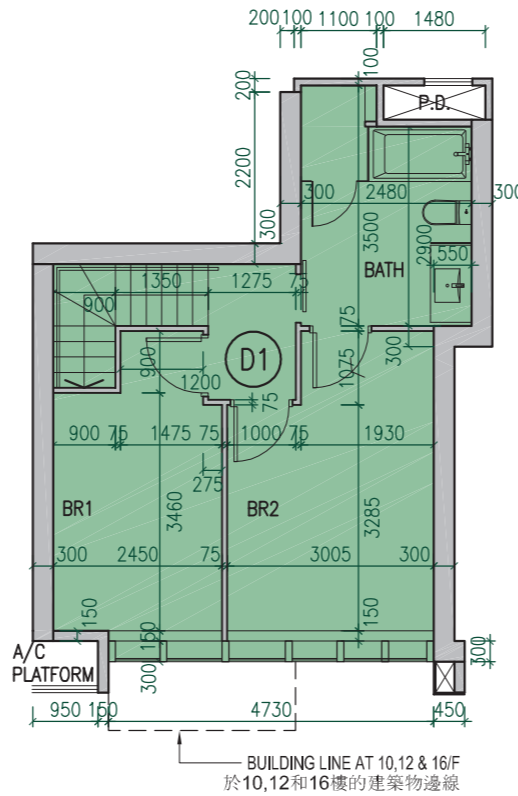
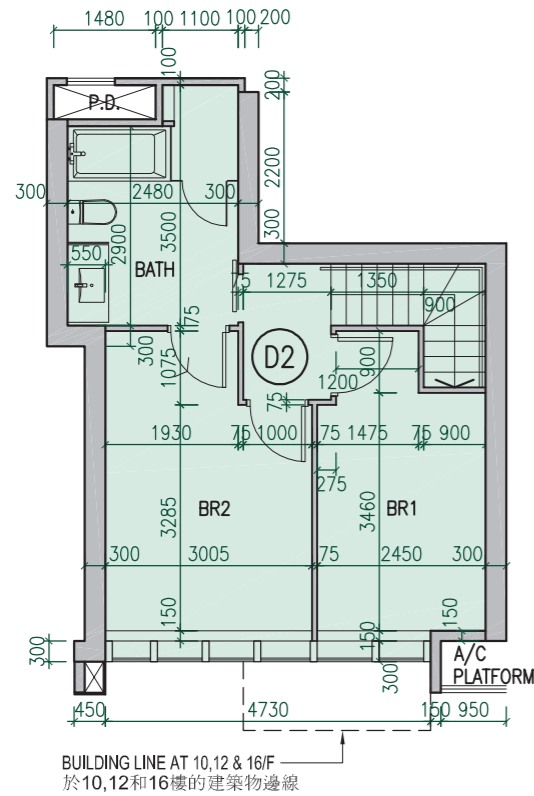
附註:

1. 因住宅物業的較高樓層的結構牆的厚度遞減, 較高樓層的內部面積, 一般比較低樓層的內部面積稍大。
2. 樓面平面圖所列之尺寸為以毫米標示之建築結構尺寸。

# 10 FLOOR PLANS OF RESIDENTIAL PROPERTIES IN THE DEVELOPMENT

## 發展項目的住宅物業的樓面平面圖

8/F, 10/F, 12/F Duplex Floor Plan  
8樓, 10樓, 12樓複式單位平面圖



# 10 FLOOR PLANS OF RESIDENTIAL PROPERTIES IN THE DEVELOPMENT

## 發展項目的住宅物業的樓面平面圖

8/F, 10/F, 12/F Duplex Floor Plan  
8樓, 10樓, 12樓複式單位平面圖

	Floor 樓層	Units 單位	
		D1	D2
The thickness of the floor slabs (excluding plaster) of each residential property (mm) 每個住宅物業的樓板 (不包括灰泥) 的厚度 (毫米)		150, 200	150, 200
The floor-to-floor height (refers to the height between the top surface of the structural slab of a floor and the top surface of the structural slab of its immediate upper floor) of each residential property (mm) 每個住宅物業的層與層之間的高度 (指該樓層之石屎地台面與上一層石屎地台面之高度距離) (毫米)	8/F, 10/F, 12/F 8樓, 10樓, 12樓	3,000, 3,150, 3,500	3,000, 3,150, 3,500

Notes:

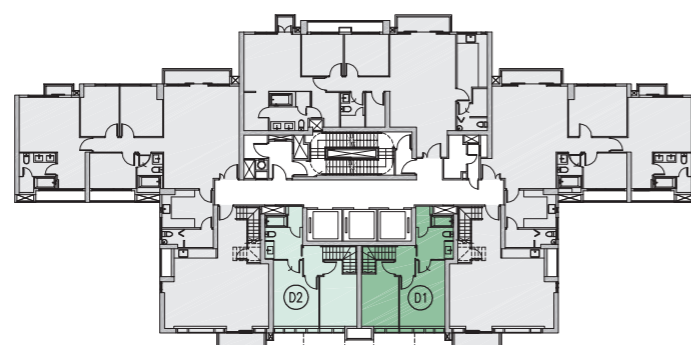
- The internal areas of the residential properties on the upper floors will generally be slightly larger than those on the lower floors because of the reducing thickness of the structural walls on the upper floors.
- The dimensions in the floor plans are all structural dimensions in millimetre.

附註:

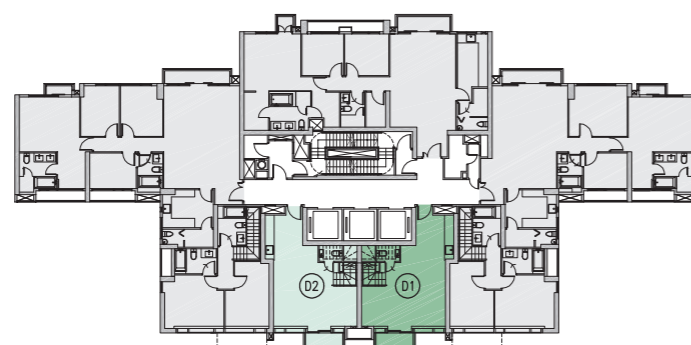
- 因住宅物業的較高樓層的結構牆的厚度遞減, 較高樓層的內部面積, 一般比較低樓層的內部面積稍大。
- 樓面平面圖所列之尺寸為以毫米標示之建築結構尺寸。

### Key plans

#### 指示圖



9/F, 11/F, 15/F  
9樓、11樓、15樓



8/F, 10/F, 12/F  
8樓、10樓、12樓

30/F	A			
29/F	C			
28/F	C	D		A
27/F	C	D		A
26/F	C	D2	D1	A
25/F	C	D2	D1	A
23/F	C	D2	D1	A
22/F	C	D2	D1	A
21/F	C	D2	D1	A
20/F	C	D2	D1	A
19/F	C	D2	D1	A
18/F	C	D2	D1	A
17/F	C	D2	D1	A
16/F	C	D2	D1	A
15/F	C	D2	D1	A
12/F	C	D2	D1	A
11/F	C	D2	D1	A
10/F	C	D2	D1	A
9/F	C	D2	D1	A
8/F	C	D2	D1	A
7/F	C	D2	S2 S1	D1 A
6/F	C	D2	S2 S1	A
5/F	C	D2	S2 S1	D1 A
3/F				
2/F				
1/F				
UG/F				
G/F				

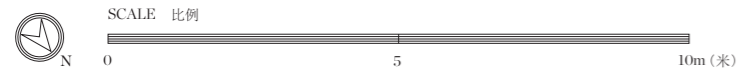
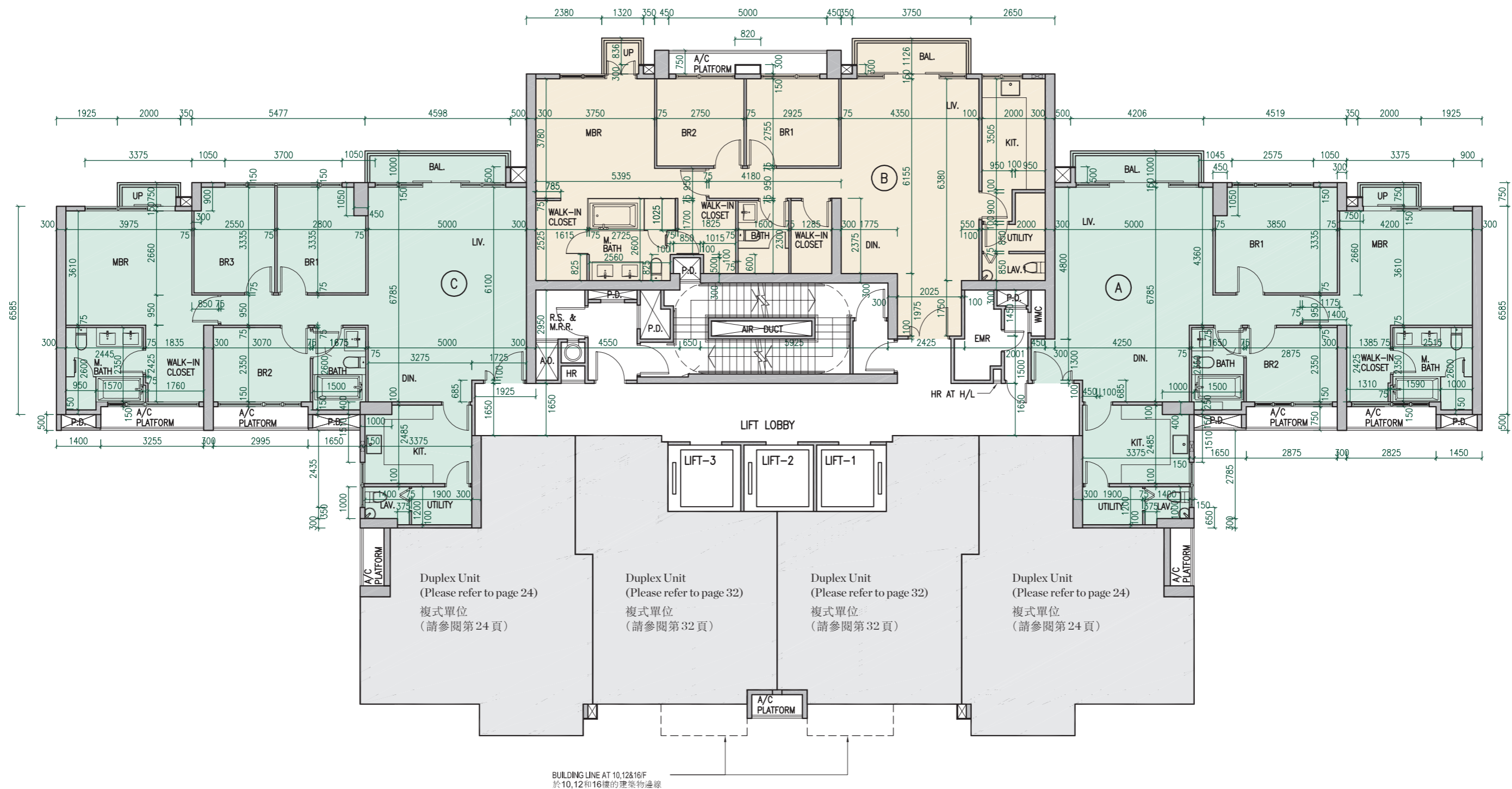
Residential floors start from 5/F.  
13/F, 14/F and 24/F are omitted.  
住宅樓層由5樓開始。  
不設13樓, 14樓及24樓。

# 10 FLOOR PLANS OF RESIDENTIAL PROPERTIES IN THE DEVELOPMENT

## 發展項目的住宅物業的樓面平面圖

9/F, 11/F, 15/F Floor Plan

9樓, 11樓, 15樓單位平面圖



# 10 FLOOR PLANS OF RESIDENTIAL PROPERTIES IN THE DEVELOPMENT

## 發展項目的住宅物業的樓面平面圖

9/F, 11/F, 15/F Floor Plan

9樓, 11樓, 15樓單位平面圖

	Floor 樓層	Units 單位		
		A	B	C
The thickness of the floor slabs (excluding plaster) of each residential property (mm) 每個住宅物業的樓板 (不包括灰泥) 的厚度 (毫米)		150,200	150,200	150,200
The floor-to-floor height (refers to the height between the top surface of the structural slab of a floor and the top surface of the structural slab of its immediate upper floor) of each residential property (mm) 每個住宅物業的層與層之間的高度 (指該樓層之石屎地台面與上一層石屎地台面之高度距離) (毫米)	9/F, 11/F, 15/F 9樓, 11樓, 15樓	3,500	3,500	3,500

### Notes:

1. The internal areas of the residential properties on the upper floors will generally be slightly larger than those on the lower floors because of the reducing thickness of the structural walls on the upper floors.
2. The dimensions in the floor plans are all structural dimensions in millimetre.

### 附註:

1. 因住宅物業的較高樓層的結構牆的厚度遞減, 較高樓層的內部面積, 一般比較低樓層的內部面積稍大。
2. 樓面平面圖所列之尺寸為以毫米標示之建築結構尺寸。

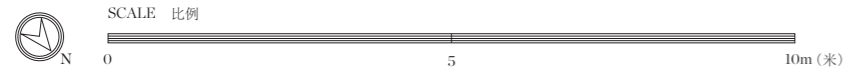
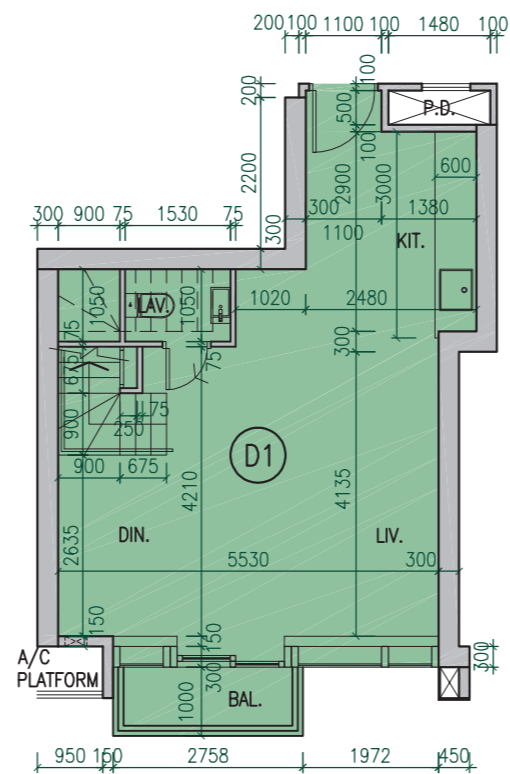
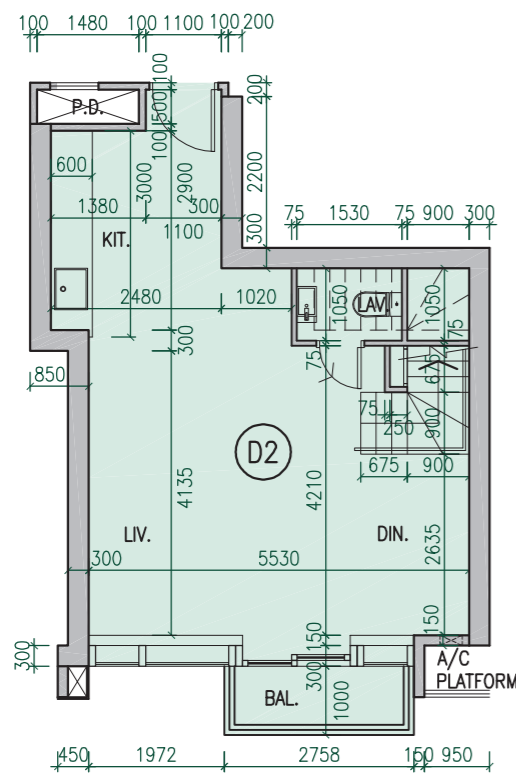
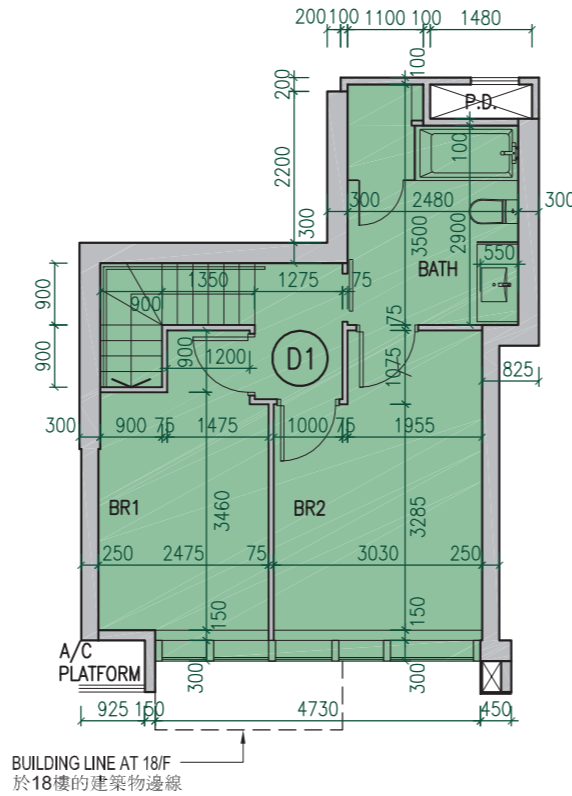
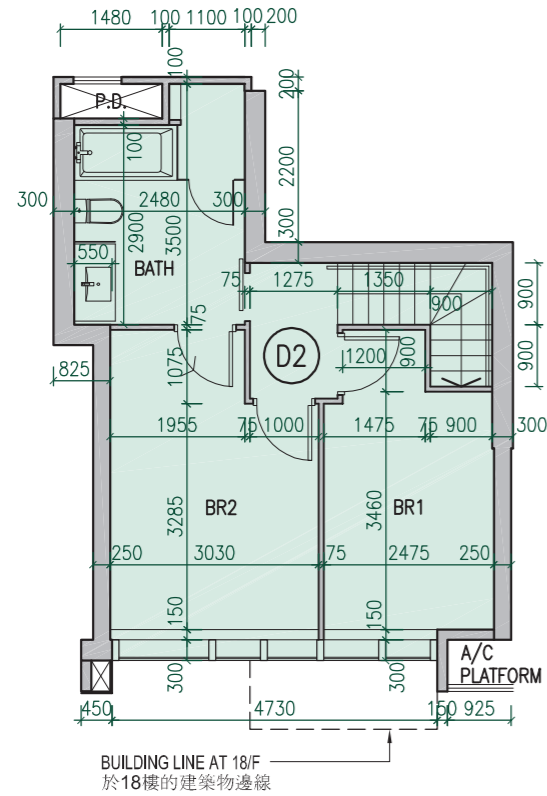


# 10 FLOOR PLANS OF RESIDENTIAL PROPERTIES IN THE DEVELOPMENT

## 發展項目的住宅物業的樓面平面圖

16/F Duplex Floor Plan

16樓複式單位平面圖



# 10 FLOOR PLANS OF RESIDENTIAL PROPERTIES IN THE DEVELOPMENT

## 發展項目的住宅物業的樓面平面圖

16/F Duplex Floor Plan

16樓複式單位平面圖

	Floor 樓層	Units 單位	
		D1	D2
The thickness of the floor slabs (excluding plaster) of each residential property (mm) 每個住宅物業的樓板(不包括灰泥)的厚度(毫米)		150, 200	150, 200
The floor-to-floor height (refers to the height between the top surface of the structural slab of a floor and the top surface of the structural slab of its immediate upper floor) of each residential property (mm) 每個住宅物業的層與層之間的高度(指該樓層之石屎地台面與上一層石屎地台面之高度距離)(毫米)	16/F 16樓	3,000, 3,150, 3,500	3,000, 3,150, 3,500

Notes:

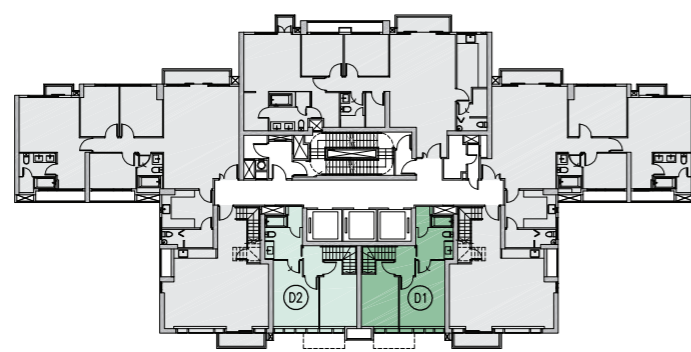
- The internal areas of the residential properties on the upper floors will generally be slightly larger than those on the lower floors because of the reducing thickness of the structural walls on the upper floors.
- The dimensions in the floor plans are all structural dimensions in millimetre.

附註:

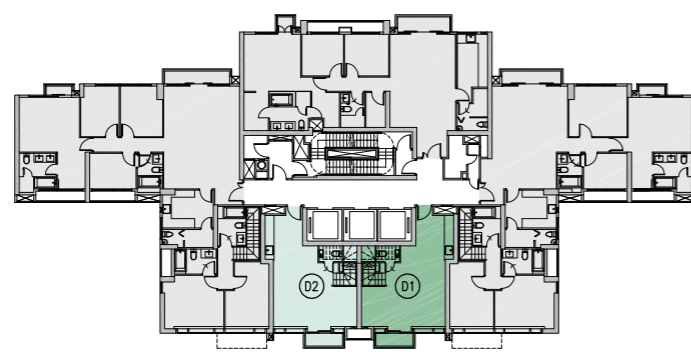
- 因住宅物業的較高樓層的結構牆的厚度遞減, 較高樓層的內部面積, 一般比較低樓層的內部面積稍大。
- 樓面平面圖所列之尺寸為以毫米標示之建築結構尺寸。

### Key plans

指示圖



17/F  
17樓



16/F  
16樓

30/F	A			
29/F	C		A	
28/F	C	D		A
27/F	C	D		A
26/F	C	D2	D1	A
25/F	C	D2	D1	A
23/F	C	D2	D1	A
22/F	C	D2	D1	A
21/F	C	D2	D1	A
20/F	C	D2	D1	A
19/F	C	D2	D1	A
18/F	C	D2	D1	A
17/F	C	D2	D1	A
16/F	C	D2	D1	A
15/F	C	D2	D1	A
12/F	C	D2	D1	A
11/F	C	D2	D1	A
10/F	C	D2	D1	A
9/F	C	D2	D1	A
8/F	C	D2	D1	A
7/F	C	D2	S2 S1	D1 A
6/F	C	D2	S2 S1	A
5/F	C	D2	S2 S1	D1 A
3/F				
2/F				
1/F				
UG/F				
G/F				

Residential floors start from 5/F.

13/F, 14/F and 24/F are omitted.

住宅樓層由5樓開始。

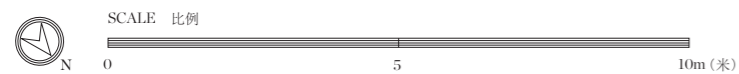
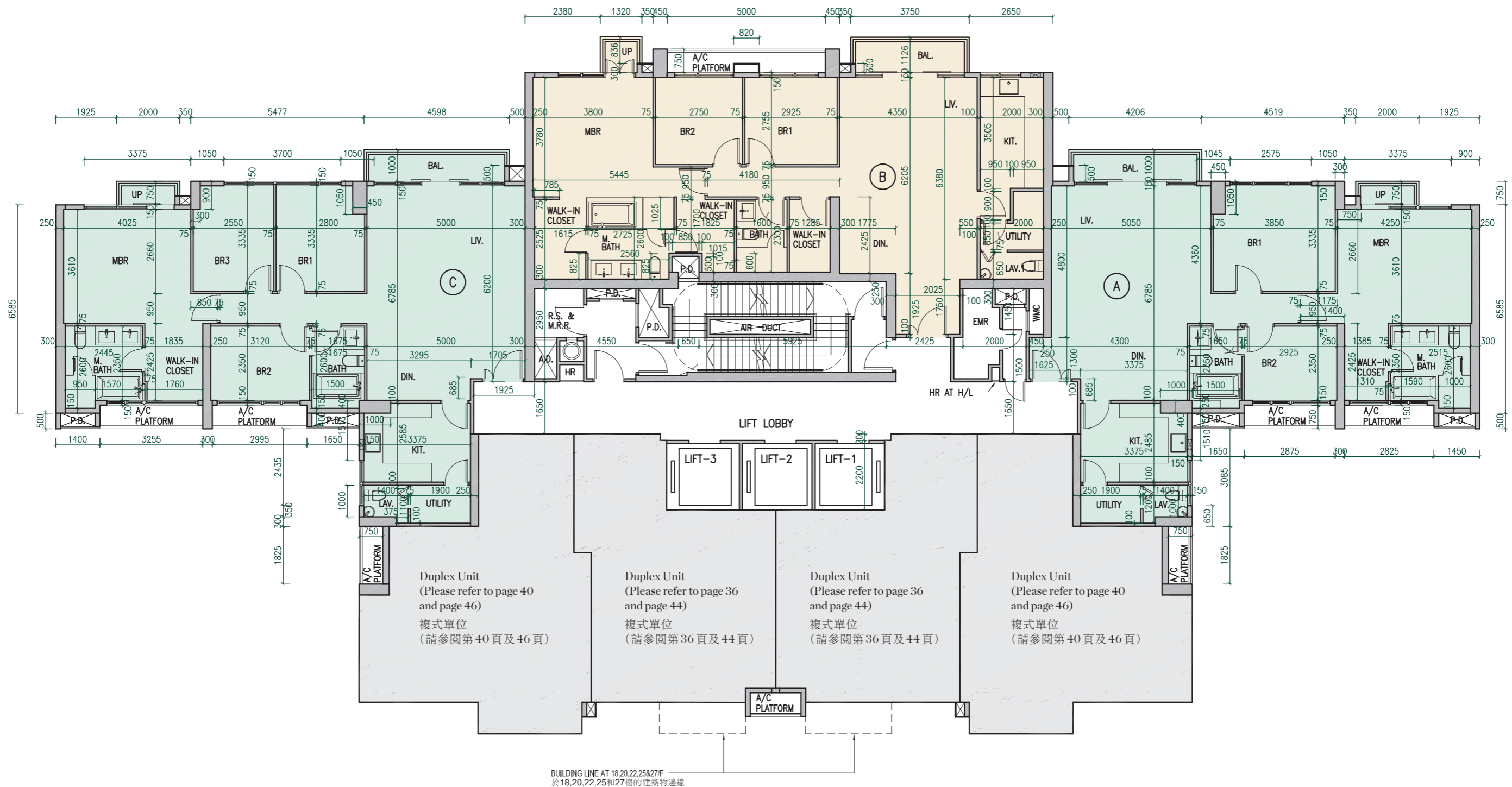
不設13樓, 14樓及24樓。

# 10 FLOOR PLANS OF RESIDENTIAL PROPERTIES IN THE DEVELOPMENT

## 發展項目的住宅物業的樓面平面圖

17/F, 19/F, 21/F, 23/F, 26/F Floor Plan

17樓, 19樓, 21樓, 23樓, 26樓單位平面圖



# 10 FLOOR PLANS OF RESIDENTIAL PROPERTIES IN THE DEVELOPMENT

## 發展項目的住宅物業的樓面平面圖

17/F, 19/F, 21/F, 23/F, 26/F Floor Plan

17樓, 19樓, 21樓, 23樓, 26樓單位平面圖

	Floor 樓層	Units 單位		
		A	B	C
The thickness of the floor slabs (excluding plaster) of each residential property (mm) 每個住宅物業的樓板 (不包括灰泥) 的厚度 (毫米)		150,200	150,200	150,200
The floor-to-floor height (refers to the height between the top surface of the structural slab of a floor and the top surface of the structural slab of its immediate upper floor) of each residential property (mm) 每個住宅物業的層與層之間的高度 (指該樓層之石屎地台面與上一層石屎地台面之高度距離) (毫米)	17/F, 19/F, 21/F, 23/F, 26/F 17樓, 19樓, 21樓, 23樓, 26樓	3,500	3,500	3,500

### Notes:

1. The internal areas of the residential properties on the upper floors will generally be slightly larger than those on the lower floors because of the reducing thickness of the structural walls on the upper floors.
2. The dimensions in the floor plans are all structural dimensions in millimetre.

### 附註：

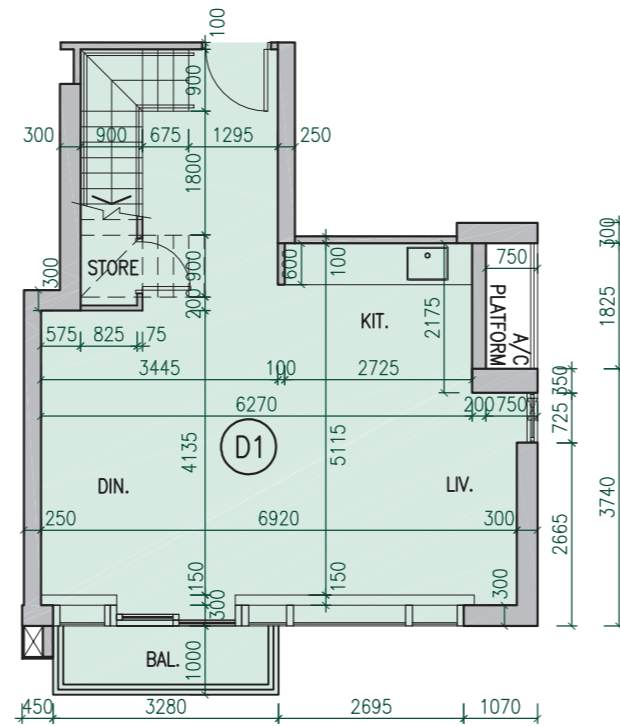
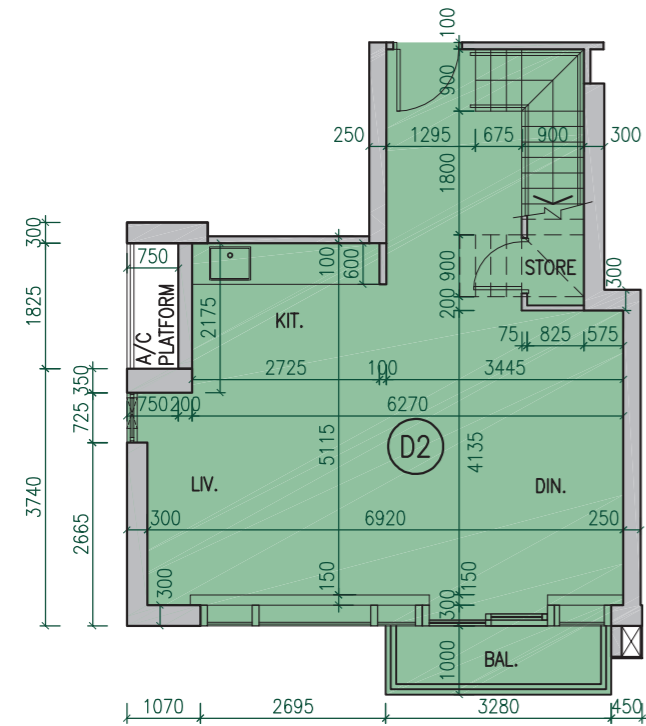
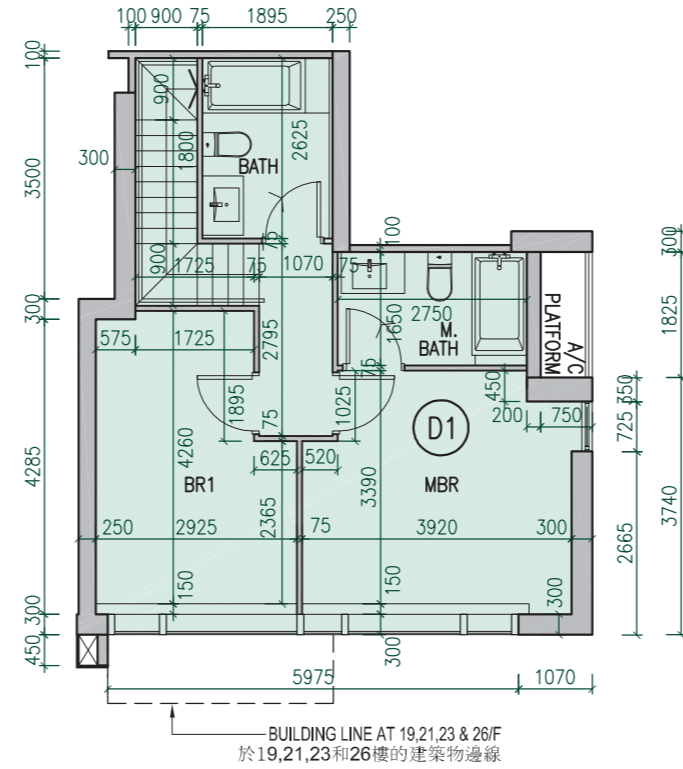
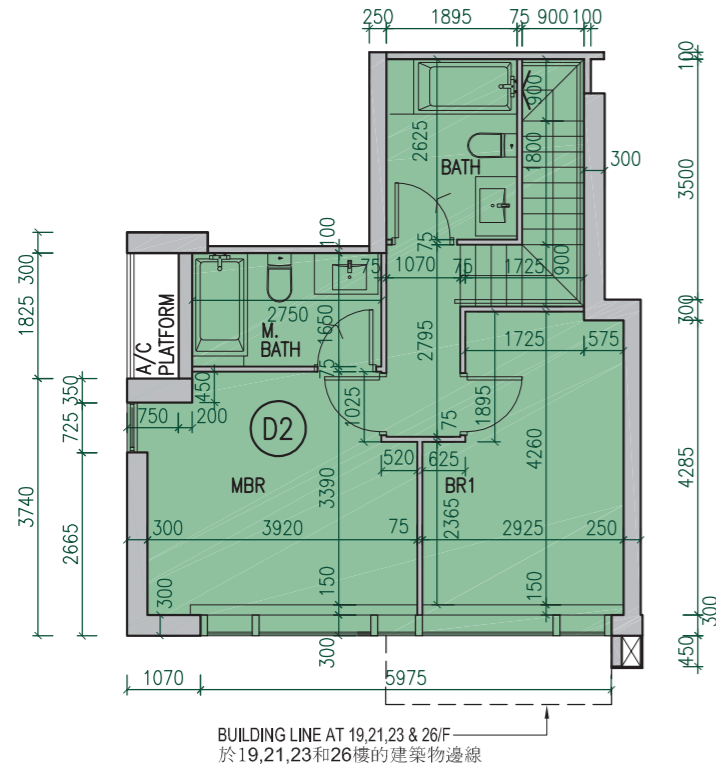
1. 因住宅物業的較高樓層的結構牆的厚度遞減，較高樓層的內部面積，一般比較低樓層的內部面積稍大。
2. 樓面平面圖所列之尺寸為以毫米標示之建築結構尺寸。

# 10 FLOOR PLANS OF RESIDENTIAL PROPERTIES IN THE DEVELOPMENT

## 發展項目的住宅物業的樓面平面圖

### 17/F, 19/F, 21/F, 23/F Duplex Floor Plan

### 17樓, 19樓, 21樓, 23樓複式單位平面圖



# 10 FLOOR PLANS OF RESIDENTIAL PROPERTIES IN THE DEVELOPMENT

## 發展項目的住宅物業的樓面平面圖

17/F, 19/F, 21/F, 23/F Duplex Floor Plan  
17樓, 19樓, 21樓, 23樓複式單位平面圖

	Floor 樓層	Units 單位	
		D1	D2
The thickness of the floor slabs (excluding plaster) of each residential property (mm) 每個住宅物業的樓板 (不包括灰泥) 的厚度 (毫米)	17/F, 19/F, 21/F, 23/F 17樓, 19樓, 21樓, 23樓	150, 200	150, 200
The floor-to-floor height (refers to the height between the top surface of the structural slab of a floor and the top surface of the structural slab of its immediate upper floor) of each residential property (mm) 每個住宅物業的層與層之間的高度 (指該樓層之石屎地台面與上一層石屎地台面之高度距離) (毫米)	17/F, 19/F, 21/F, 23/F 17樓, 19樓, 21樓, 23樓	3,000, 3,500	3,000, 3,500

Notes:

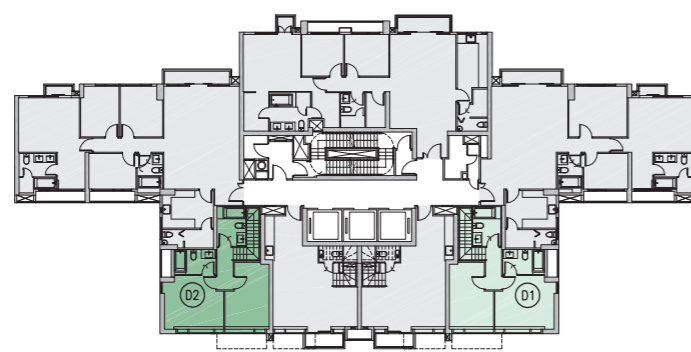
- The internal areas of the residential properties on the upper floors will generally be slightly larger than those on the lower floors because of the reducing thickness of the structural walls on the upper floors.
- The dimensions in the floor plans are all structural dimensions in millimetre.

附註:

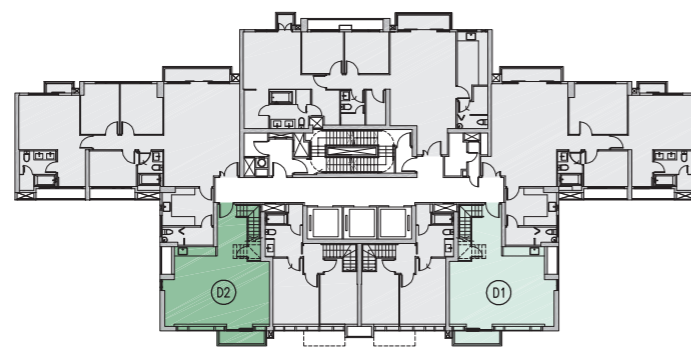
- 因住宅物業的較高樓層的結構牆的厚度遞減, 較高樓層的內部面積, 一般比較低樓層的內部面積稍大。
- 樓面平面圖所列之尺寸為以毫米標示之建築結構尺寸。

### Key plans

#### 指示圖



18/F, 20/F, 22/F, 25/F  
18樓、20樓、22樓、25樓



17/F, 19/F, 21/F, 23/F  
17樓、19樓、21樓、23樓

30/F	A				
29/F	C		A		
28/F	C	D		A	
27/F	C	D		A	
26/F	C	D2	D1	A	
25/F	C	D2	D1	A	
23/F	C	D2	D1	A	
22/F	C	D2	D1	A	
21/F	C	D2	D1	A	
20/F	C	D2	D1	A	
19/F	C	D2	D1	A	
18/F	C	D2	D1	A	
17/F	C	D2	D1	A	
16/F	C	D2	D1	A	
15/F	C	D2	D1	A	
12/F	C	D2	D1	A	
11/F	C	D2	D1	A	
10/F	C	D2	D1	A	
9/F	C	D2	D1	A	
8/F	C	D2	D1	A	
7/F	C	D2	S2 S1	D1 A	
6/F	C	D2	S2 S1	A	
5/F	C	D2	S2 S1	D1 A	
3/F					
2/F					
1/F					
UG/F					
G/F					

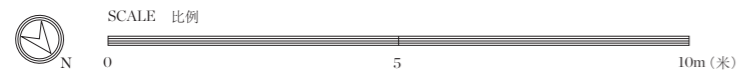
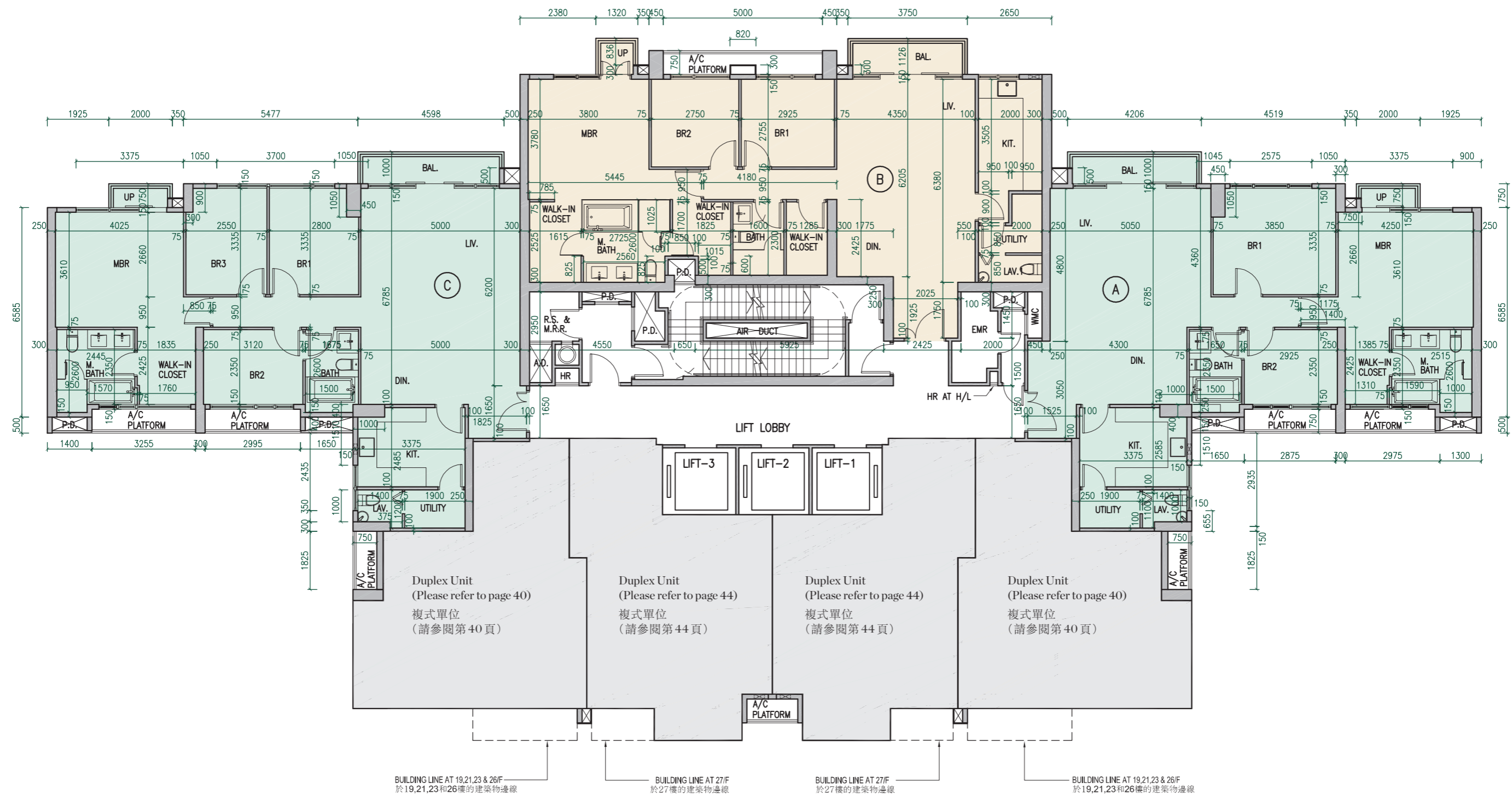
Residential floors start from 5/F.  
13/F, 14/F and 24/F are omitted.  
住宅樓層由5樓開始。  
不設13樓、14樓及24樓。

# 10 FLOOR PLANS OF RESIDENTIAL PROPERTIES IN THE DEVELOPMENT

## 發展項目的住宅物業的樓面平面圖

18/F, 20/F, 22/F, 25/F Floor Plan

18樓, 20樓, 22樓, 25樓單位平面圖



# 10 FLOOR PLANS OF RESIDENTIAL PROPERTIES IN THE DEVELOPMENT

## 發展項目的住宅物業的樓面平面圖

18/F, 20/F, 22/F, 25/F Floor Plan

18樓, 20樓, 22樓, 25樓單位平面圖

	Floor 樓層	Units 單位		
		A	B	C
The thickness of the floor slabs (excluding plaster) of each residential property (mm) 每個住宅物業的樓板 (不包括灰泥) 的厚度 (毫米)		150,200	150,200	150,200
The floor-to-floor height (refers to the height between the top surface of the structural slab of a floor and the top surface of the structural slab of its immediate upper floor) of each residential property (mm) 每個住宅物業的層與層之間的高度 (指該樓層之石屎地台面與上一層石屎地台面之高度距離) (毫米)	18/F, 20/F, 22/F, 25/F 18樓, 20樓, 22樓, 25樓	3,500	3,500	3,500

### Notes:

1. The internal areas of the residential properties on the upper floors will generally be slightly larger than those on the lower floors because of the reducing thickness of the structural walls on the upper floors.
2. The dimensions in the floor plans are all structural dimensions in millimetre.

### 附註:

1. 因住宅物業的較高樓層的結構牆的厚度遞減, 較高樓層的內部面積, 一般比較低樓層的內部面積稍大。
2. 樓面平面圖所列之尺寸為以毫米標示之建築結構尺寸。

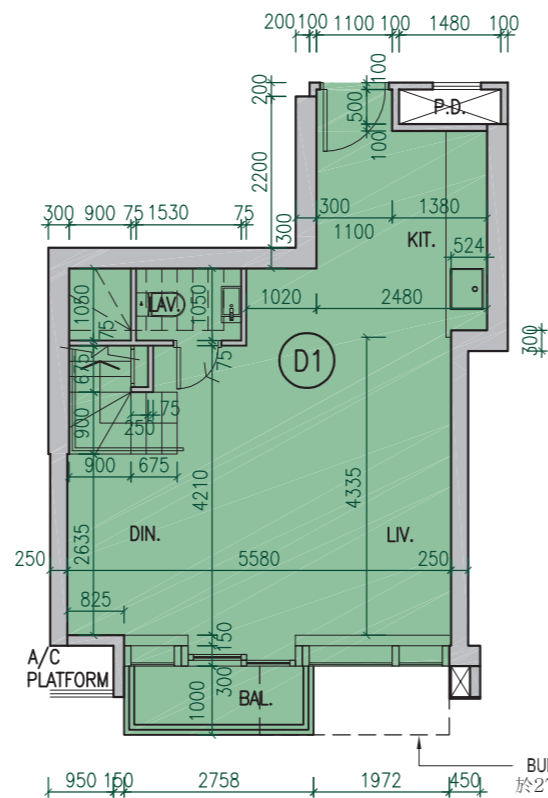
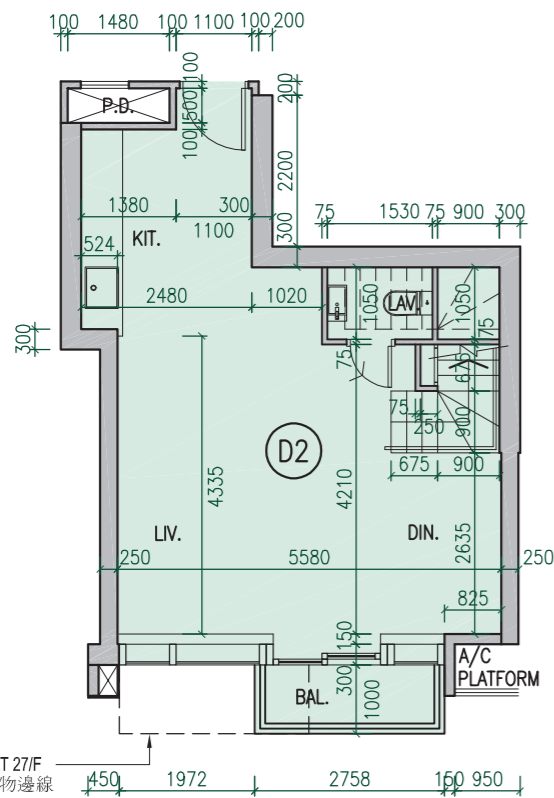
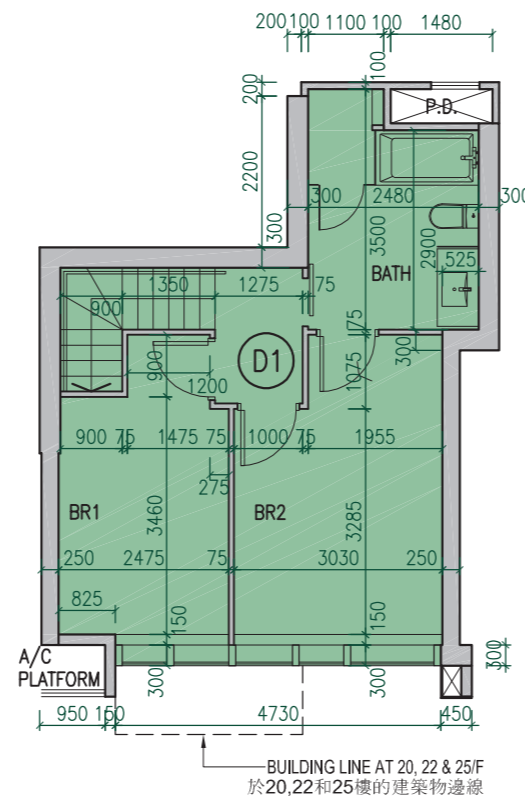
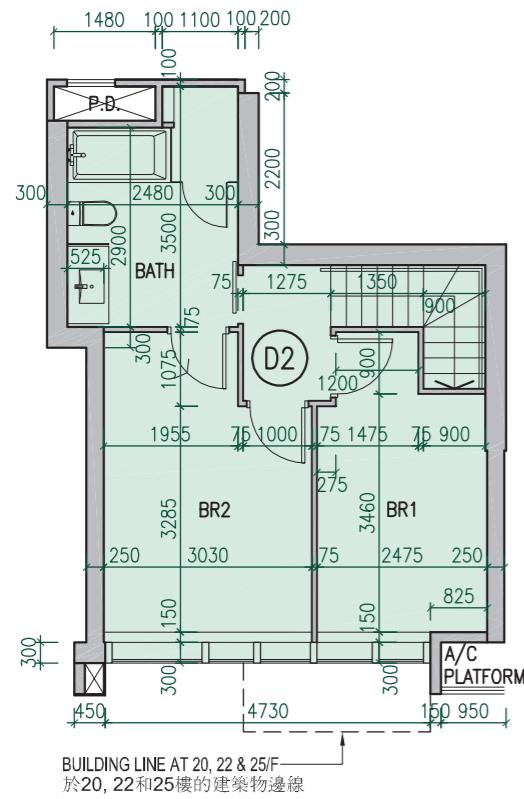


# 10 FLOOR PLANS OF RESIDENTIAL PROPERTIES IN THE DEVELOPMENT

## 發展項目的住宅物業的樓面平面圖

18/F, 20/F, 22/F, 25/F Duplex Floor Plan

18樓, 20樓, 22樓, 25樓複式單位平面圖



# 10 FLOOR PLANS OF RESIDENTIAL PROPERTIES IN THE DEVELOPMENT

## 發展項目的住宅物業的樓面平面圖

18/F, 20/F, 22/F, 25/F Duplex Floor Plan  
18樓, 20樓, 22樓, 25樓複式單位平面圖

	Floor 樓層	Units 單位	
		D1	D2
The thickness of the floor slabs (excluding plaster) of each residential property (mm) 每個住宅物業的樓板 (不包括灰泥) 的厚度 (毫米)	18/F, 20/F, 22/F, 25/F 18樓, 20樓, 22樓, 25樓	150, 200	150, 200
The floor-to-floor height (refers to the height between the top surface of the structural slab of a floor and the top surface of the structural slab of its immediate upper floor) of each residential property (mm) 每個住宅物業的層與層之間的高度 (指該樓層之石屎地台面與上一層石屎地台面之高度距離) (毫米)	18/F, 20/F, 22/F, 25/F 18樓, 20樓, 22樓, 25樓	3,000, 3,150, 3,500	3,000, 3,150, 3,500

Notes:

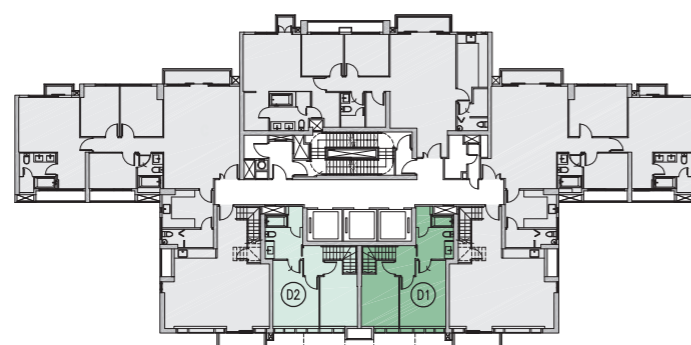
- The internal areas of the residential properties on the upper floors will generally be slightly larger than those on the lower floors because of the reducing thickness of the structural walls on the upper floors.
- The dimensions in the floor plans are all structural dimensions in millimetre.

附註:

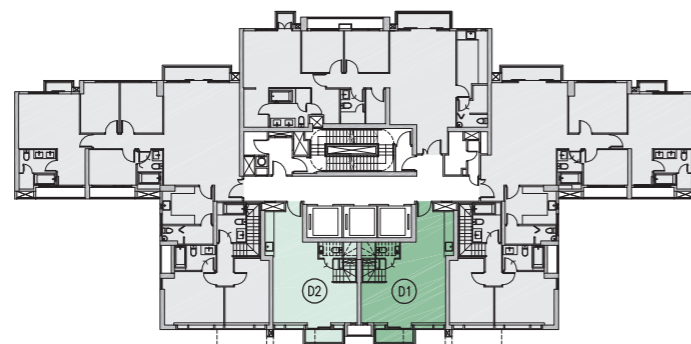
- 因住宅物業的較高樓層的結構牆的厚度遞減, 較高樓層的內部面積, 一般比較低樓層的內部面積稍大。
- 樓面平面圖所列之尺寸為以毫米標示之建築結構尺寸。

### Key plans

#### 指示圖



19/F, 21/F, 23/F, 26/F  
19樓、21樓、23樓、26樓



18/F, 20/F, 22/F, 25/F  
18樓、20樓、22樓、25樓

30/F	A			
29/F	C			
28/F	C	D		A
27/F	C	D		A
26/F	C	D2	D1	A
25/F	C	D2	D1	A
23/F	C	D2	D1	A
22/F	C	D2	D1	A
21/F	C	D2	D1	A
20/F	C	D2	D1	A
19/F	C	D2	D1	A
18/F	C	D2	D1	A
17/F	C	D2	D1	A
16/F	C	D2	D1	A
15/F	C	D2	D1	A
12/F	C	D2	D1	A
11/F	C	D2	D1	A
10/F	C	D2	D1	A
9/F	C	D2	D1	A
8/F	C	D2	D1	A
7/F	C	D2	S2 S1	D1 A
6/F	C	D2	S2 S1	A
5/F	C	D2	S2 S1	D1 A
3/F				
2/F				
1/F				
UG/F				
G/F				

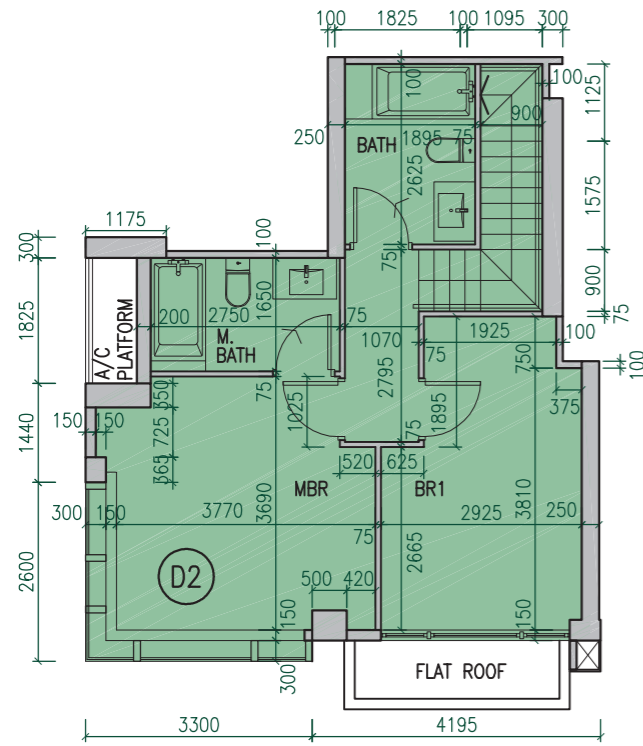
Residential floors start from 5/F.  
13/F, 14/F and 24/F are omitted.  
住宅樓層由5樓開始。  
不設13樓, 14樓及24樓。

# 10 FLOOR PLANS OF RESIDENTIAL PROPERTIES IN THE DEVELOPMENT

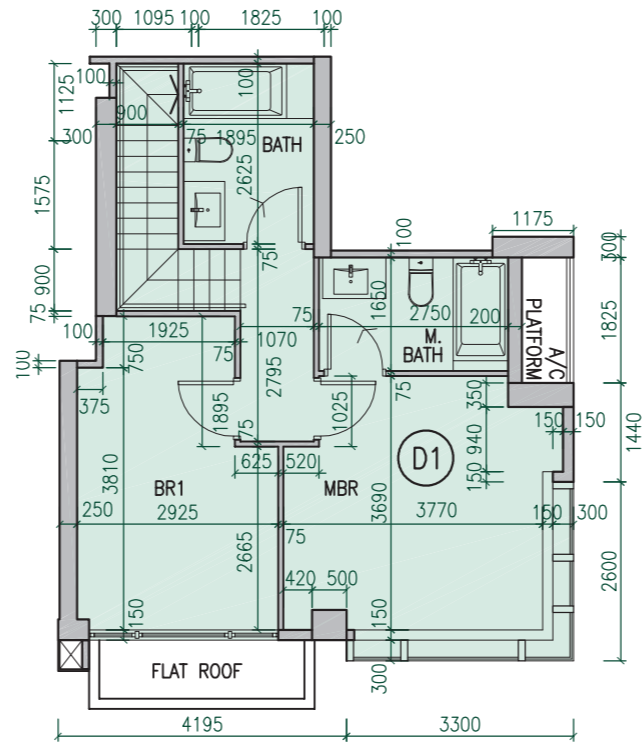
## 發展項目的住宅物業的樓面平面圖

### 26/F Duplex Floor Plan

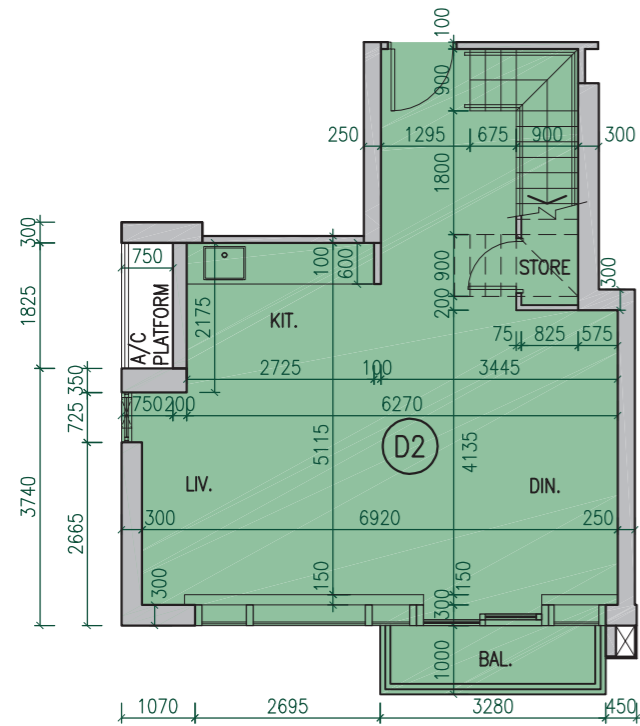
### 26樓複式單位平面圖



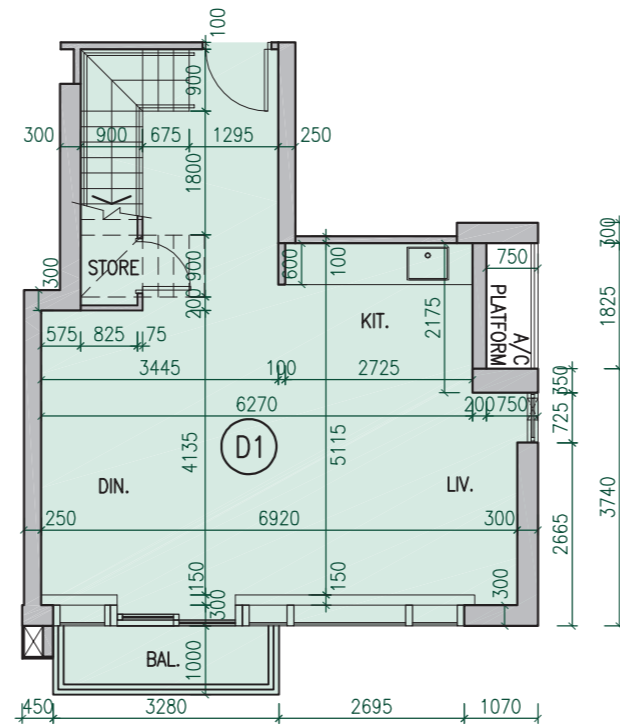
Upper Duplex of Unit D2 (27/F)  
複式單位D2上層 (27樓)



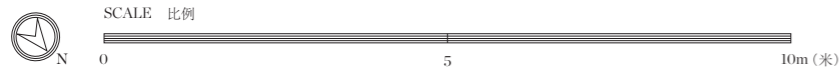
Upper Duplex of Unit D1 (27/F)  
複式單位D1上層 (27樓)



Lower Duplex of Unit D2 (26/F)  
複式單位D2下層 (26樓)



Lower Duplex of Unit D1 (26/F)  
複式單位D1下層 (26樓)



# 10 FLOOR PLANS OF RESIDENTIAL PROPERTIES IN THE DEVELOPMENT

## 發展項目的住宅物業的樓面平面圖

### 26/F Duplex Floor Plan

### 26樓複式單位平面圖

	Floor 樓層	Units 單位	
		D1	D2
The thickness of the floor slabs (excluding plaster) of each residential property (mm) 每個住宅物業的樓板 (不包括灰泥) 的厚度 (毫米)		150, 200	150, 200
The floor-to-floor height (refers to the height between the top surface of the structural slab of a floor and the top surface of the structural slab of its immediate upper floor) of each residential property (mm) 每個住宅物業的層與層之間的高度 (指該樓層之石屎地台面與上一層石屎地台面之高度距離) (毫米)	26/F 26樓	3,000, 3,500	3,000, 3,150, 3,500

#### Notes:

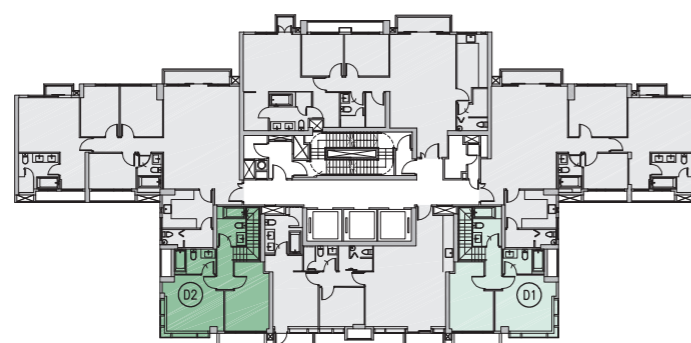
- The internal areas of the residential properties on the upper floors will generally be slightly larger than those on the lower floors because of the reducing thickness of the structural walls on the upper floors.
- The dimensions in the floor plans are all structural dimensions in millimetre.

#### 附註：

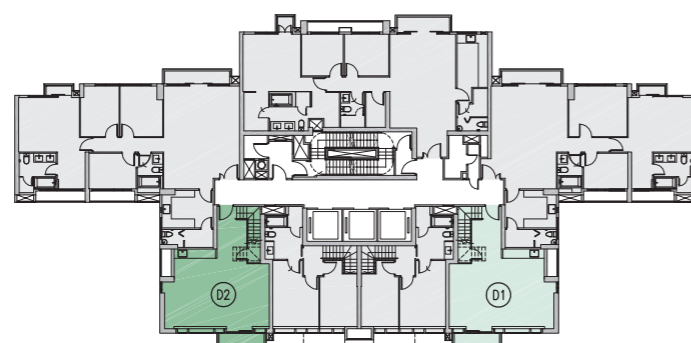
- 因住宅物業的較高樓層的結構牆的厚度遞減，較高樓層的內部面積，一般比較低樓層的內部面積稍大。
- 樓面平面圖所列之尺寸為以毫米標示之建築結構尺寸。

#### Key plans

#### 指示圖



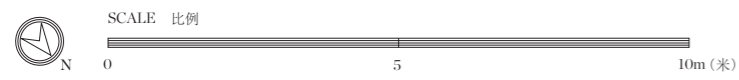
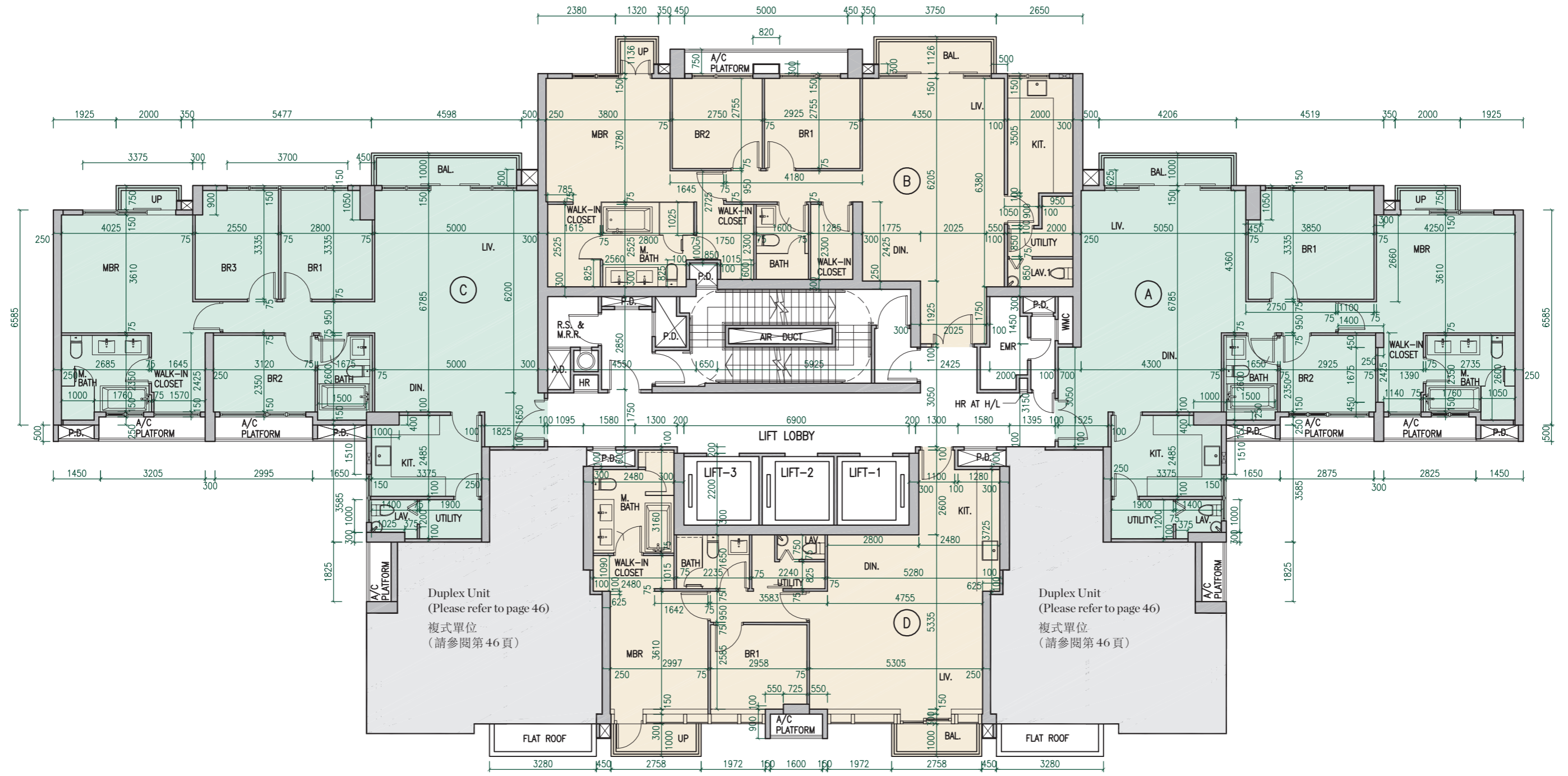
27/F  
27樓



26/F  
26樓

30/F	A			
29/F	C			
28/F	C	D	A	
27/F	C	D	D1	A
26/F	C	D2	D1	A
25/F	C	D2	D1	A
23/F	C	D2	D1	A
22/F	C	D2	D1	A
21/F	C	D2	D1	A
20/F	C	D2	D1	A
19/F	C	D2	D1	A
18/F	C	D2	D1	A
17/F	C	D2	D1	A
16/F	C	D2	D1	A
15/F	C	D2	D1	A
12/F	C	D2	D1	A
11/F	C	D2	D1	A
10/F	C	D2	D1	A
9/F	C	D2	D1	A
8/F	C	D2	D1	A
7/F	C	D2	S2 S1	D1 A
6/F	C	D2	S2 S1	A
5/F	C	D2	S2 S1	D1 A
3/F				
2/F				
1/F				
UG/F				
G/F				

Residential floors start from 5/F.  
13/F, 14/F and 24/F are omitted.  
住宅樓層由5樓開始。  
不設13樓，14樓及24樓。



# 10 FLOOR PLANS OF RESIDENTIAL PROPERTIES IN THE DEVELOPMENT

## 發展項目的住宅物業的樓面平面圖

27/F Floor Plan

27樓單位平面圖

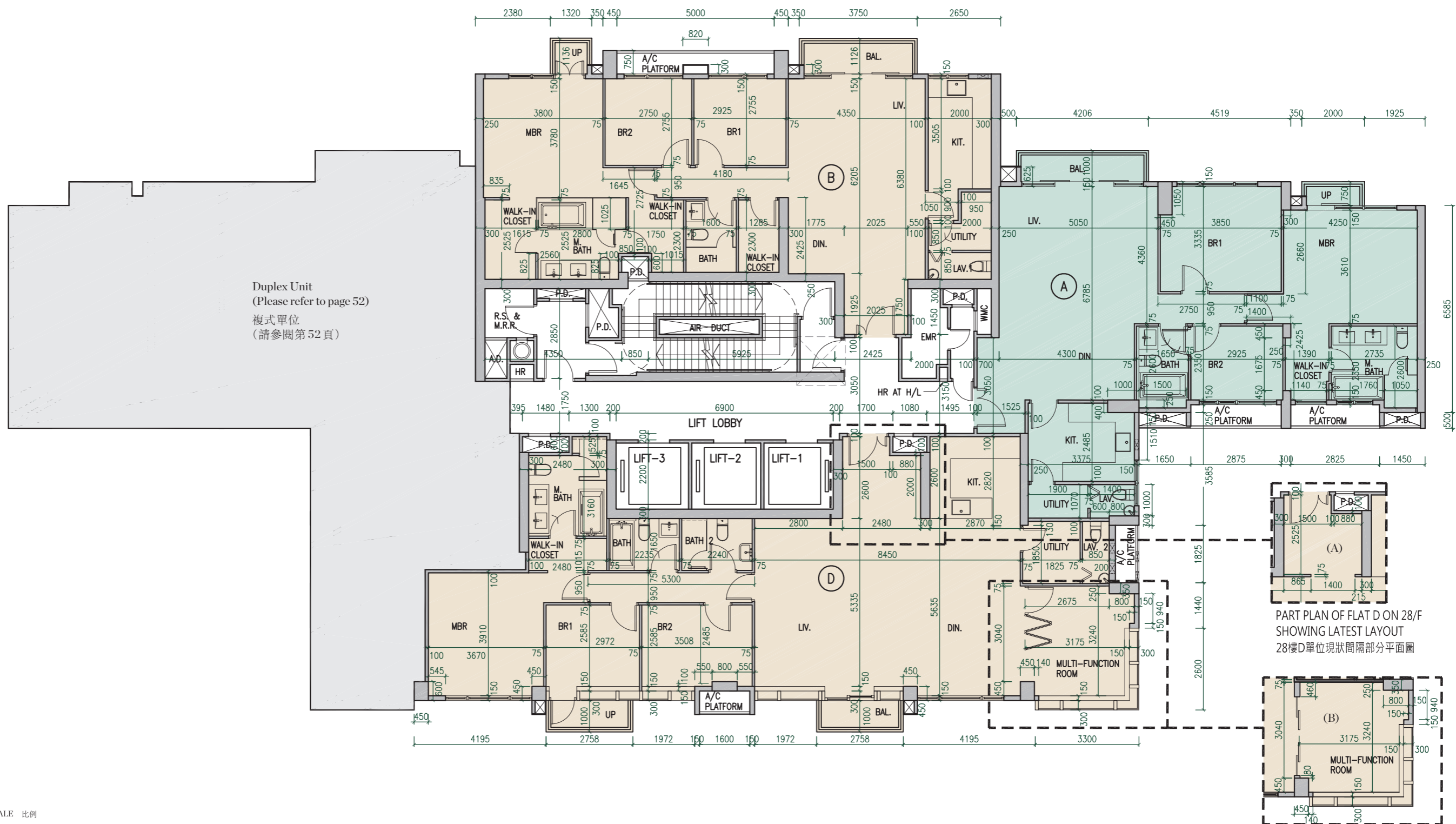
	Floor 樓層	Units 單位			
		A	B	C	D
The thickness of the floor slabs (excluding plaster) of each residential property (mm) 每個住宅物業的樓板（不包括灰泥）的厚度（毫米）		150,200	150,200	150,200	150,200
The floor-to-floor height (refers to the height between the top surface of the structural slab of a floor and the top surface of the structural slab of its immediate upper floor) of each residential property (mm) 每個住宅物業的層與層之間的高度（指該樓層之石屎地台面與上一層石屎地台面之高度距離）（毫米）	27/F 27樓	3,500	3,500	3,150, 3,250, 3,500, 3,850, 4,000	3,500, 3,650, 3,850

Notes:

1. The internal areas of the residential properties on the upper floors will generally be slightly larger than those on the lower floors because of the reducing thickness of the structural walls on the upper floors.
2. The dimensions in the floor plans are all structural dimensions in millimetre.

附註：

1. 因住宅物業的較高樓層的結構牆的厚度遞減，較高樓層的內部面積，一般比較低樓層的內部面積稍大。
2. 樓面平面圖所列之尺寸為以毫米標示之建築結構尺寸。



# 10 FLOOR PLANS OF RESIDENTIAL PROPERTIES IN THE DEVELOPMENT

## 發展項目的住宅物業的樓面平面圖

28/F Floor Plan

28樓單位平面圖

	Floor 樓層	Units 單位		
		A	B	D
The thickness of the floor slabs (excluding plaster) of each residential property (mm) 每個住宅物業的樓板（不包括灰泥）的厚度（毫米）		150, 200	150, 200	150, 200, 250
The floor-to-floor height (refers to the height between the top surface of the structural slab of a floor and the top surface of the structural slab of its immediate upper floor) of each residential property (mm) 每個住宅物業的層與層之間的高度（指該樓層之石屎地台面與上一層石屎地台面之高度距離）（毫米）	28/F 28樓	3,000, 3,500, 3,650	3,500	3,000, 3,150, 3,250, 3,500, 3,650, 4,000

Notes:

- The internal areas of the residential properties on the upper floors will generally be slightly larger than those on the lower floors because of the reducing thickness of the structural walls on the upper floors.
- The dimensions in the floor plans are all structural dimensions in millimetre.
- Flat D on 28/F has been altered by way of minor works or exempted works under the Buildings Ordinance (Cap. 123 of the Laws of Hong Kong) after completion of the Development. Please refer to the relevant part plans showing the latest layout for details (numberings below correspond to the remarks in the relevant part plans on page 50): (A) Partition wall(s) added; (B) Partition walls added and original folding door changed to glass sliding door.

附註：

- 因住宅物業的較高樓層的結構牆的厚度遞減，較高樓層的內部面積，一般比較低樓層的內部面積稍大。
- 樓面平面圖所列之尺寸為以毫米標示之建築結構尺寸。
- 28樓D單位在發展項目落成後進行小型工程或獲《建築物條例》（香港法例第123章）豁免的工程而有所改動。詳情請參閱第50頁有關現狀部分平面圖（下文編號對應第50頁平面圖中附註編號）：(A) 增設分隔牆；(B) 增設分隔牆及原有摺疊門改為玻璃趟門。

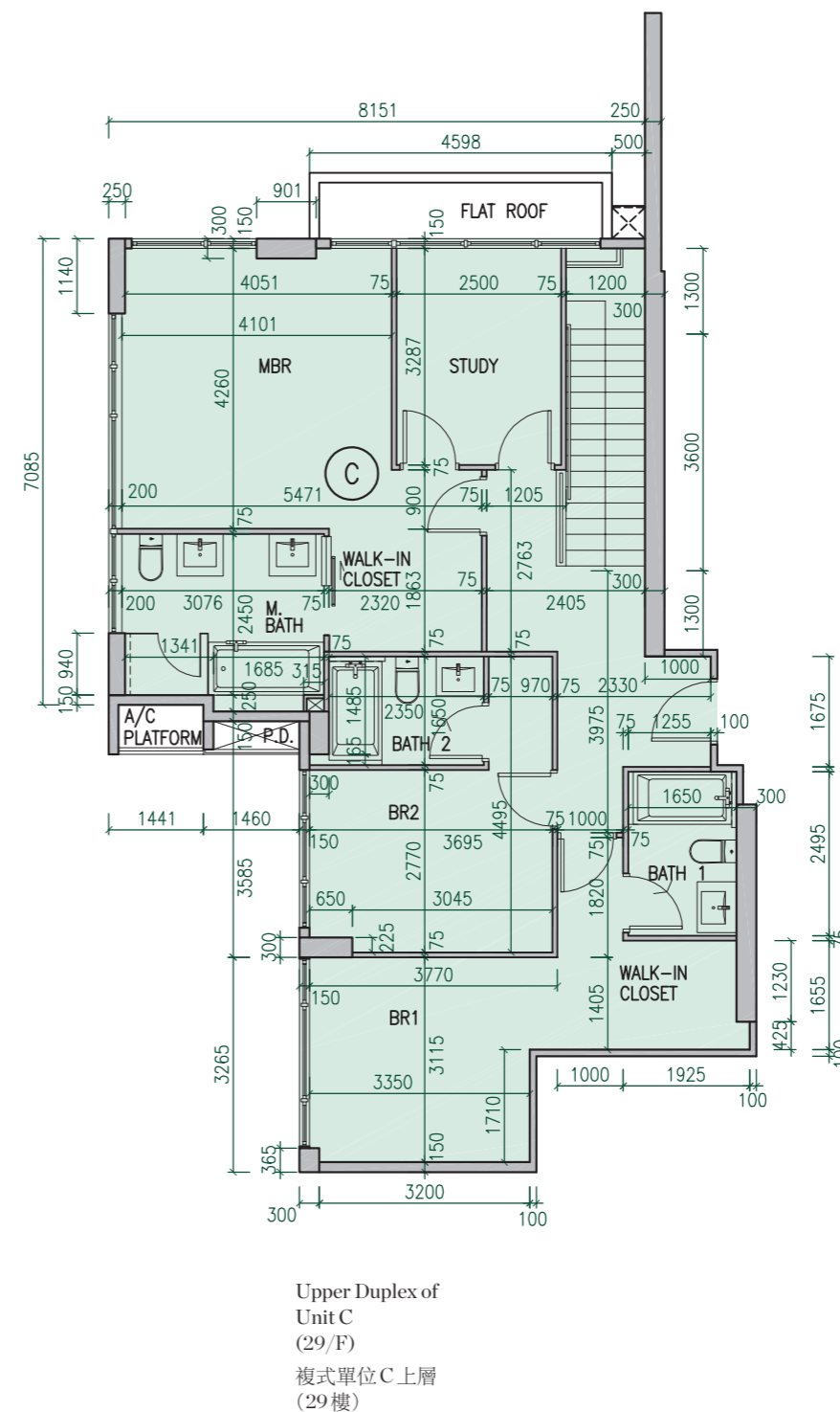
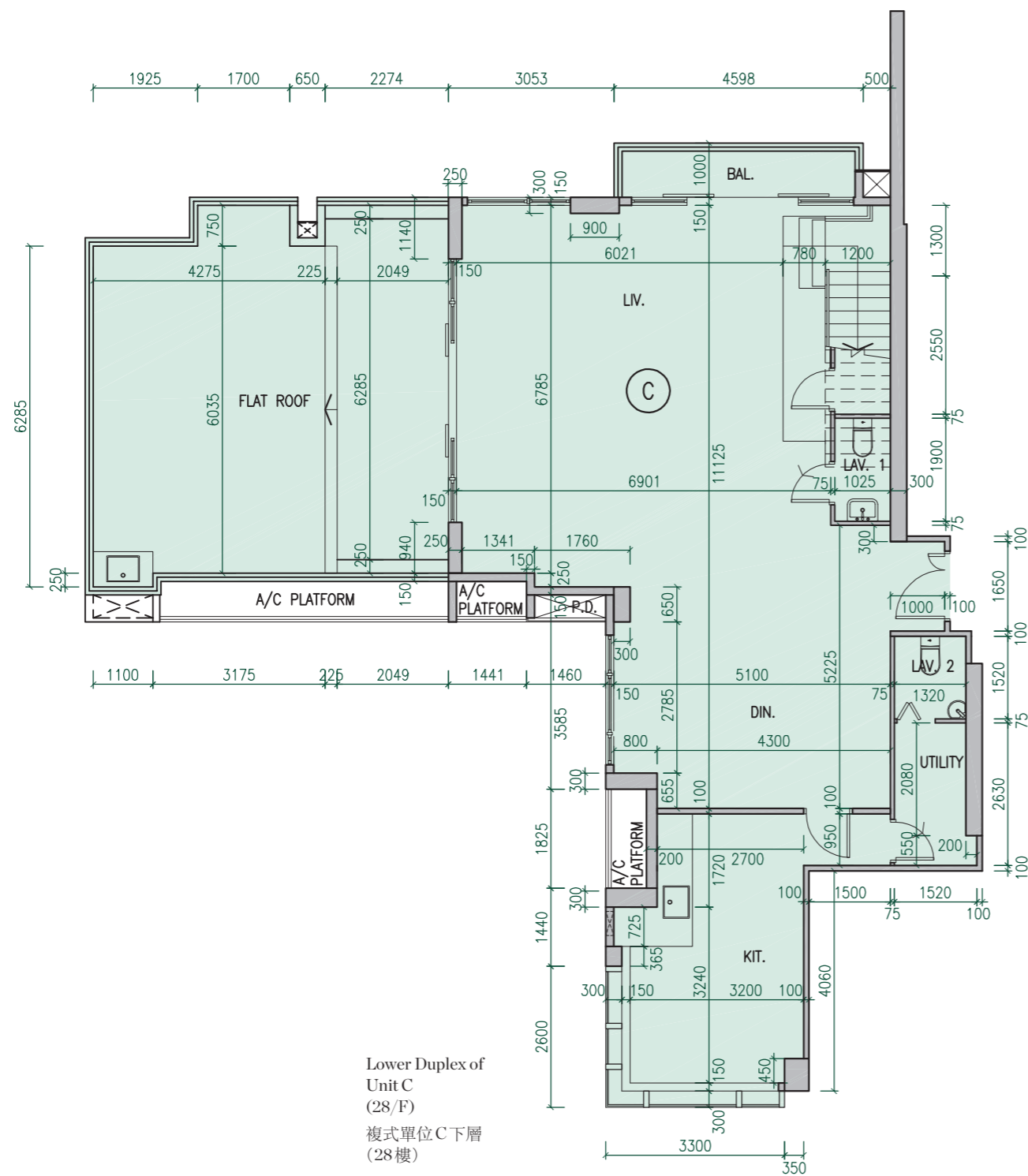


# 10 FLOOR PLANS OF RESIDENTIAL PROPERTIES IN THE DEVELOPMENT

## 發展項目的住宅物業的樓面平面圖

### 28/F Duplex Floor Plan

### 28樓複式單位平面圖



# 10 FLOOR PLANS OF RESIDENTIAL PROPERTIES IN THE DEVELOPMENT

## 發展項目的住宅物業的樓面平面圖

28/F Duplex Floor Plan

28樓複式單位平面圖

Floor 樓層	Units 單位
	C
The thickness of the floor slabs (excluding plaster) of each residential property (mm) 每個住宅物業的樓板(不包括灰泥)的厚度(毫米)	150, 200, 250
The floor-to-floor height (refers to the height between the top surface of the structural slab of a floor and the top surface of the structural slab of its immediate upper floor) of each residential property (mm) 每個住宅物業的層與層之間的高度(指該樓層之石屎地台面與上一層石屎地台面之高度距離)(毫米)	28/F 28樓 3,000, 3,150, 3,250, 3,500, 3,650, 4,000

Notes:

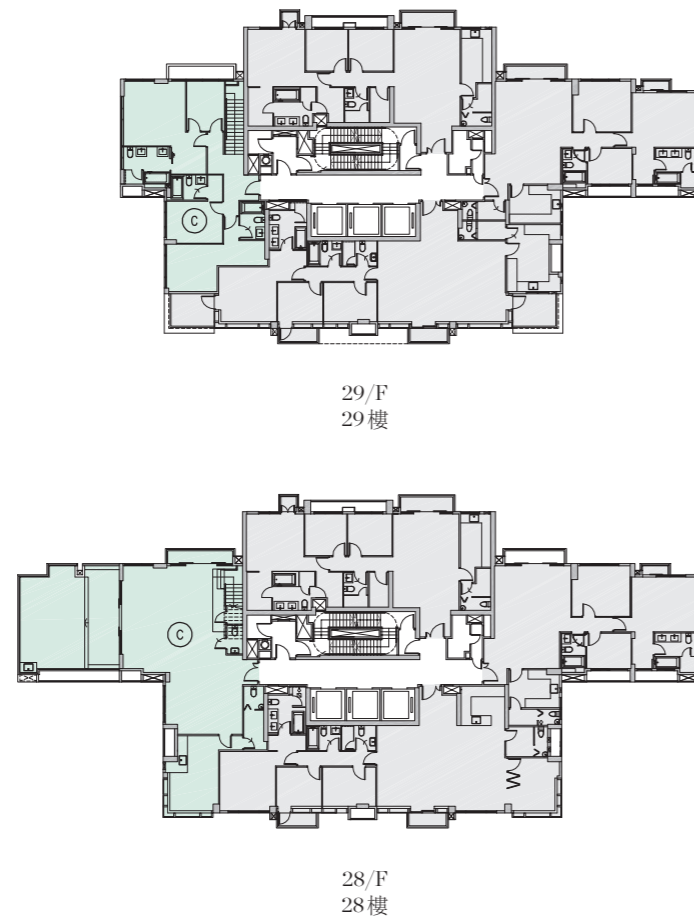
- The internal areas of the residential properties on the upper floors will generally be slightly larger than those on the lower floors because of the reducing thickness of the structural walls on the upper floors.
- The dimensions in the floor plans are all structural dimensions in millimetre.

附註:

- 因住宅物業的較高樓層的結構牆的厚度遞減, 較高樓層的內部面積, 一般比較低樓層的內部面積稍大。
- 樓面平面圖所列之尺寸為以毫米標示之建築結構尺寸。

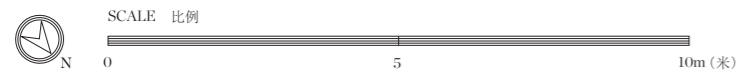
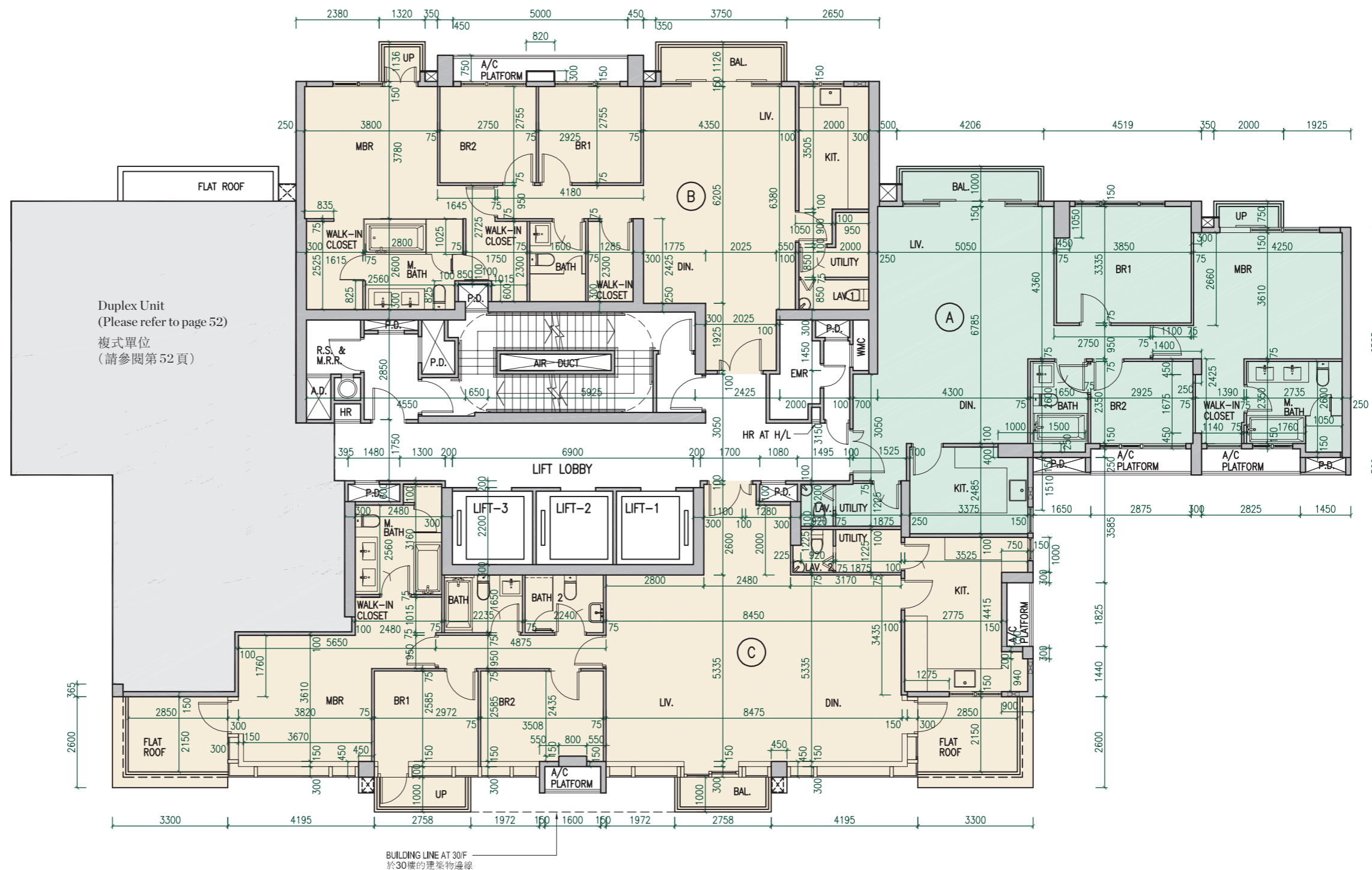
### Key plans

指示圖



30/F	A					
29/F	C		A			
28/F	C	D			A	
27/F	C	D			A	
26/F	C	D2	D1	D1	A	
25/F	C	D2	D1	D1	A	
23/F	C	D2	D1	D1	A	
22/F	C	D2	D1	D1	A	
21/F	C	D2	D1	D1	A	
20/F	C	D2	D1	D1	A	
19/F	C	D2	D1	D1	A	
18/F	C	D2	D1	D1	A	
17/F	C	D2	D1	D1	A	
16/F	C	D2	D1	D1	A	
15/F	C	D2	D1	D1	A	
12/F	C	D2	D1	D1	A	
11/F	C	D2	D1	D1	A	
10/F	C	D2	D1	D1	A	
9/F	C	D2	D1	D1	A	
8/F	C	D2	D1	D1	A	
7/F	C	D2	S2	S1	D1	A
6/F	C	D2	S2	S1	D1	A
5/F	C	D2	S2	S1	D1	A
3/F						
2/F						
1/F						
UG/F						
G/F						

Residential floors start from 5/F.  
13/F, 14/F and 24/F are omitted.  
住宅樓層由5樓開始。  
不設13樓, 14樓及24樓。



# 10 FLOOR PLANS OF RESIDENTIAL PROPERTIES IN THE DEVELOPMENT

## 發展項目的住宅物業的樓面平面圖

29/F Floor Plan

29樓單位平面圖

	Floor 樓層	Units 單位		
		A	B	C
The thickness of the floor slabs (excluding plaster) of each residential property (mm) 每個住宅物業的樓板（不包括灰泥）的厚度（毫米）		150, 200	150, 200	150, 200, 250
The floor-to-floor height (refers to the height between the top surface of the structural slab of a floor and the top surface of the structural slab of its immediate upper floor) of each residential property (mm) 每個住宅物業的層與層之間的高度（指該樓層之石屎地台面與上一層石屎地台面之高度距離）（毫米）	29/F 29樓	3,000, 3,100, 3,150, 3,350, 3,450, 3,500, 3,650, 3,830	3,000, 3,350, 3,500, 3,800, 3,850	3,150, 3,250, 3,500, 3,650, 4,000

Notes:

1. The internal areas of the residential properties on the upper floors will generally be slightly larger than those on the lower floors because of the reducing thickness of the structural walls on the upper floors.
2. The dimensions in the floor plans are all structural dimensions in millimetre.

附註：

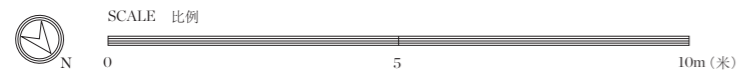
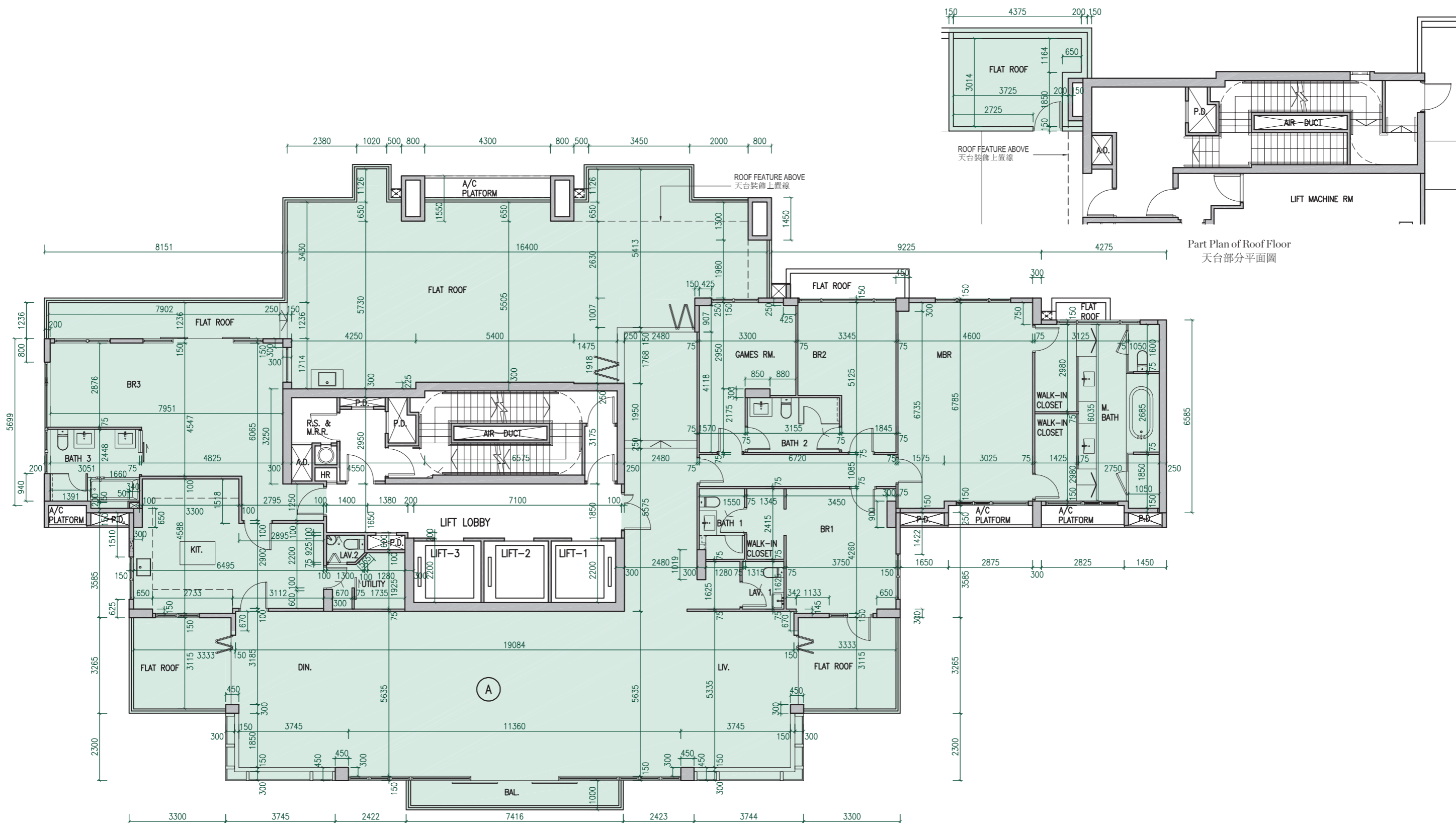
1. 因住宅物業的較高樓層的結構牆的厚度遞減，較高樓層的內部面積，一般比較低樓層的內部面積稍大。
2. 樓面平面圖所列之尺寸為以毫米標示之建築結構尺寸。

# 10 FLOOR PLANS OF RESIDENTIAL PROPERTIES IN THE DEVELOPMENT

## 發展項目的住宅物業的樓面平面圖

30/F Floor Plan

30樓單位平面圖



# 10 FLOOR PLANS OF RESIDENTIAL PROPERTIES IN THE DEVELOPMENT

## 發展項目的住宅物業的樓面平面圖

30/F Floor Plan

30樓單位平面圖

	Floor 樓層	Units 單位 A
The thickness of the floor slabs (excluding plaster) of each residential property (mm) 每個住宅物業的樓板（不包括灰泥）的厚度（毫米）		150, 200, 250, 300
The floor-to-floor height (refers to the height between the top surface of the structural slab of a floor and the top surface of the structural slab of its immediate upper floor) of each residential property (mm) 每個住宅物業的層與層之間的高度（指該樓層之石屎地台面與上一層石屎地台面之高度距離）（毫米）	30/F 30樓	3,700, 4,000, 4,350, 4,400, 4,500

Notes:

1. The internal areas of the residential properties on the upper floors will generally be slightly larger than those on the lower floors because of the reducing thickness of the structural walls on the upper floors.
2. The dimensions in the floor plans are all structural dimensions in millimetre.

附註：

1. 因住宅物業的較高樓層的結構牆的厚度遞減，較高樓層的內部面積，一般比較低樓層的內部面積稍大。
2. 樓面平面圖所列之尺寸為以毫米標示之建築結構尺寸。