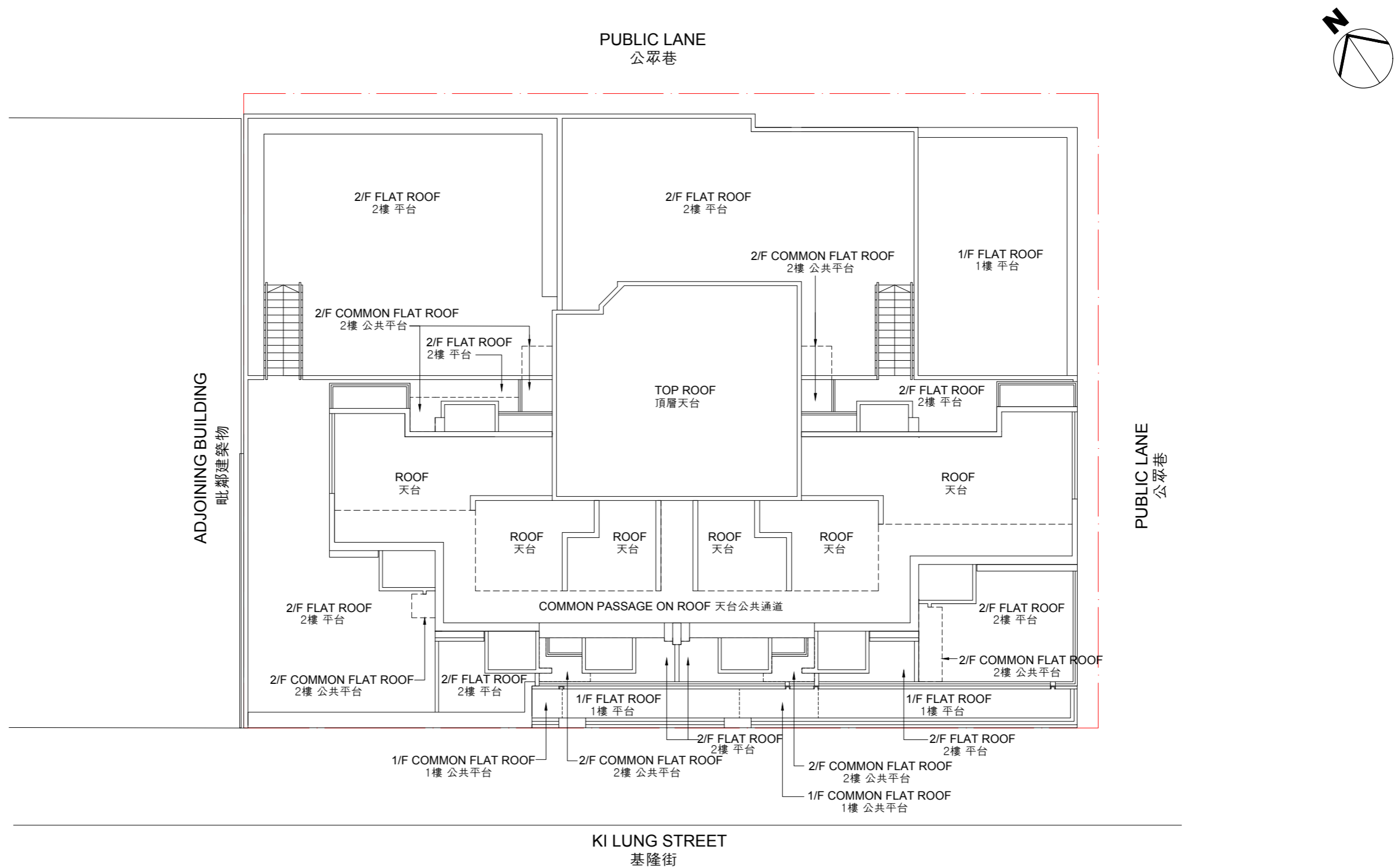


10 LAYOUT PLAN OF THE DEVELOPMENT 發展項目的布局圖



Development Site Boundary
發展項目邊界線

Scale: 0M/米 5M/米 10M/米 15M/米
比例:

The estimated date of completion of the buildings or facilities within the Development as provided by the Authorized Person for the Development is 31 December 2019.

由發展項目的認可人士提供的位於發展項目內的建築物或設施的預計落成日期為2019年12月31日。