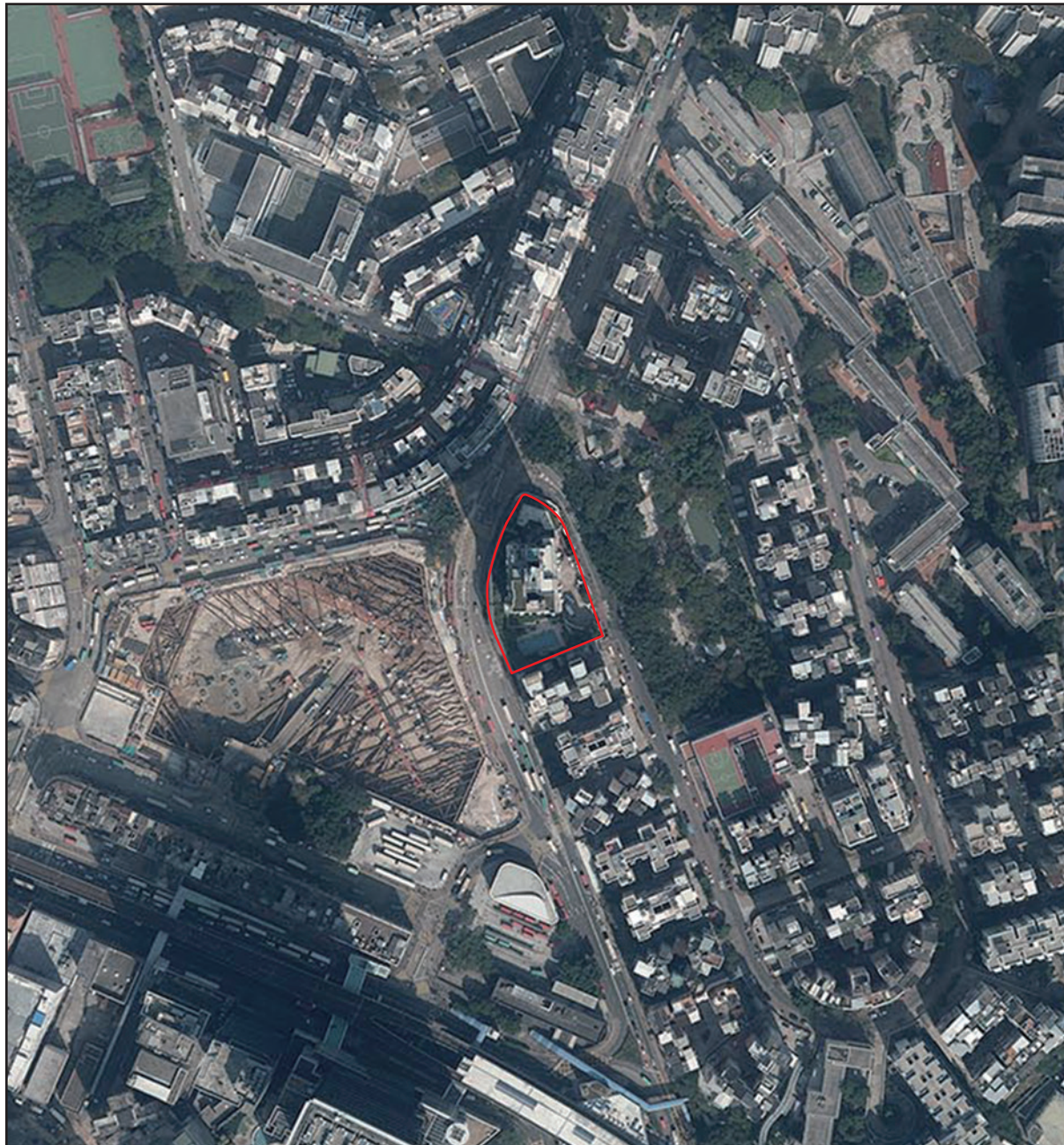


AERIAL PHOTOGRAPH OF THE DEVELOPMENT 發展項目的鳥瞰照片



Adopted from part of the aerial photo, Photo No. E013628C, dated 25 January 2017, taken by the Survey and Mapping Office, Lands Department, The Government of the Hong Kong Special Administrative Region at a flying height of 6900 feet.

摘錄自香港特別行政區政府地政總署測繪處於 25/1/2017 在6900呎飛行高度拍攝之鳥瞰照片，照片編號為E013628C。

Survey and Mapping Office, Lands Department, The Government of HKSAR © Copyright reserved - reproduction by permission only.

香港特別行政區政府地政總署測繪處©版權所有，未經許可，不得翻印。

Remark: Due to technical reasons (such as the shape of the Development), the Aerial Photograph has shown more than the area required under the Residential Properties (First-hand Sales) Ordinance.

備註：因技術原因(例如發展項目之形狀)，鳥瞰照片所顯示之範圍多於《一手住宅物業銷售條例》所要求者。

 Boundary Line of the Development
發展項目邊界