

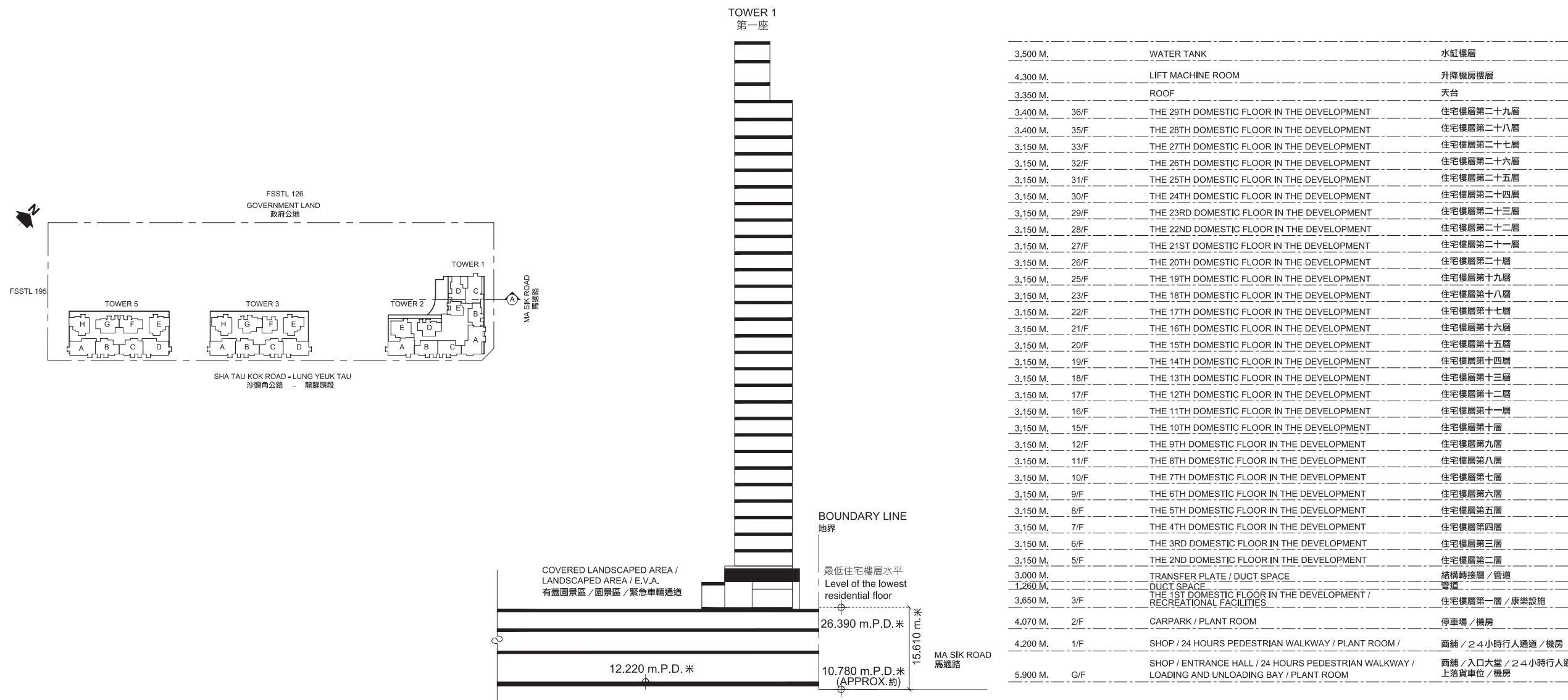
對買方的警告
WARNING TO PURCHASERS

- 1. 此提示建議你聘用一間獨立的律師事務所（代表擁有人行事者除外），以在交易中代表你行事。
- 2. 如你聘用上述的獨立的律師事務所，以在交易中代表你行事，該律師事務所將會能夠向你提供獨立意見。
- 3. 如你聘用代表擁有人行事的律師事務所同時代表你行事，而擁有人與你之間出現利益衝突：—
- (i) 該律師事務所可能不能夠保障你的利益；及
- (ii) 你可能要聘用一間獨立的律師事務所。
- 4. 如屬3.(ii)段的情況，你須支付的律師費用總數，可能高於如你自一開始即聘用一間獨立的律師事務所須支付的費用。

- 1. You are recommended to instruct a separate firm of solicitors (other than that acting for the owner) to act for you in relation to the transaction.
- 2. If you instruct such separate firm of solicitors to act for you in relation to the transaction, that firm will be able to give independent advice to you.
- 3. If you instruct the firm of solicitors acting for the owner to act for you as well, and a conflict of interest arises between the owner and you:-
- (i) that firm may not be able to protect your interests; and
- (ii) you may have to instruct a separate firm of solicitors.
- 4. In the case of paragraph 3.(ii), the total solicitors' fees payable by you may be higher than the fees that would have been payable if you had instructed a separate firm of solicitors in the first place.

發展項目中的建築物的橫截面圖
CROSS-SECTION PLAN OF BUILDING IN THE DEVELOPMENT

橫截面圖 A-A
Cross - Section Plan A-A

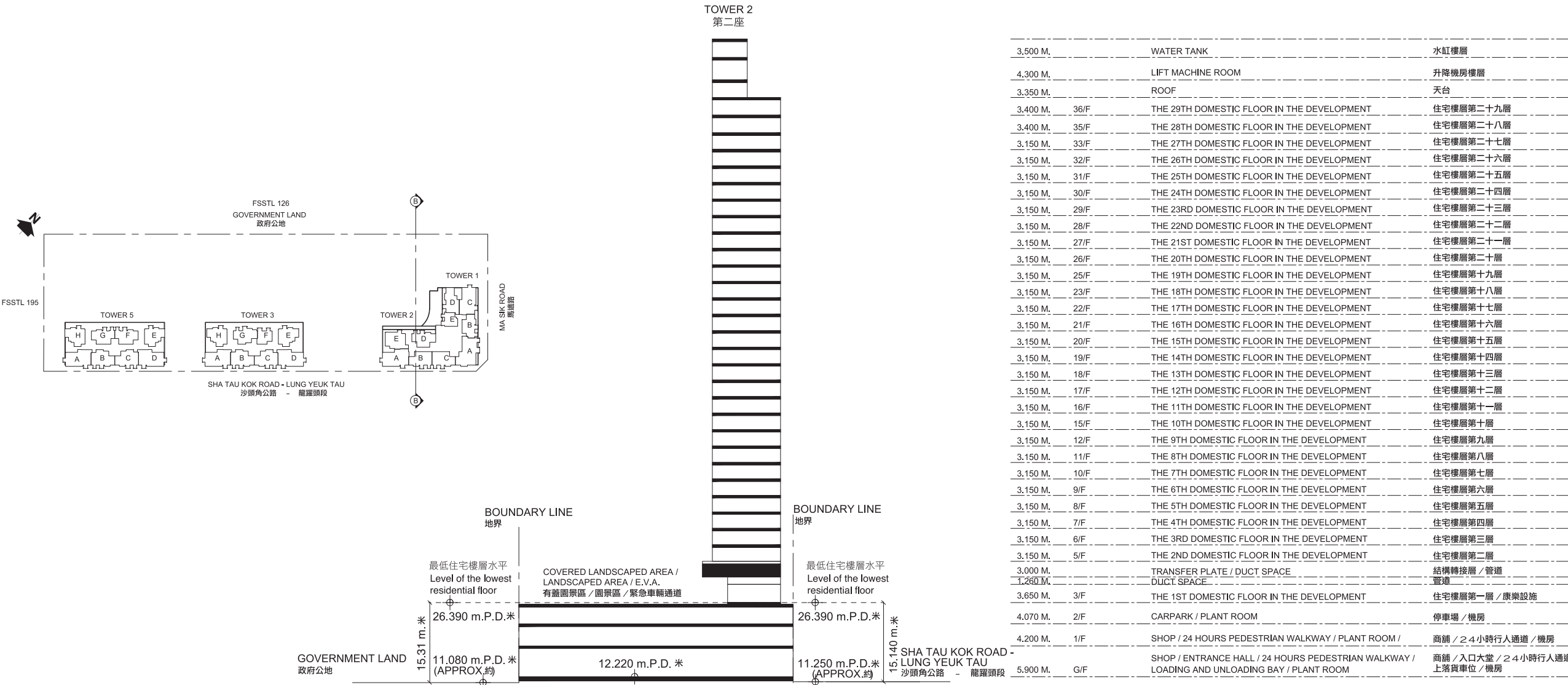


發展項目中的建築物的橫截面圖

CROSS-SECTION PLAN OF BUILDING IN THE DEVELOPMENT

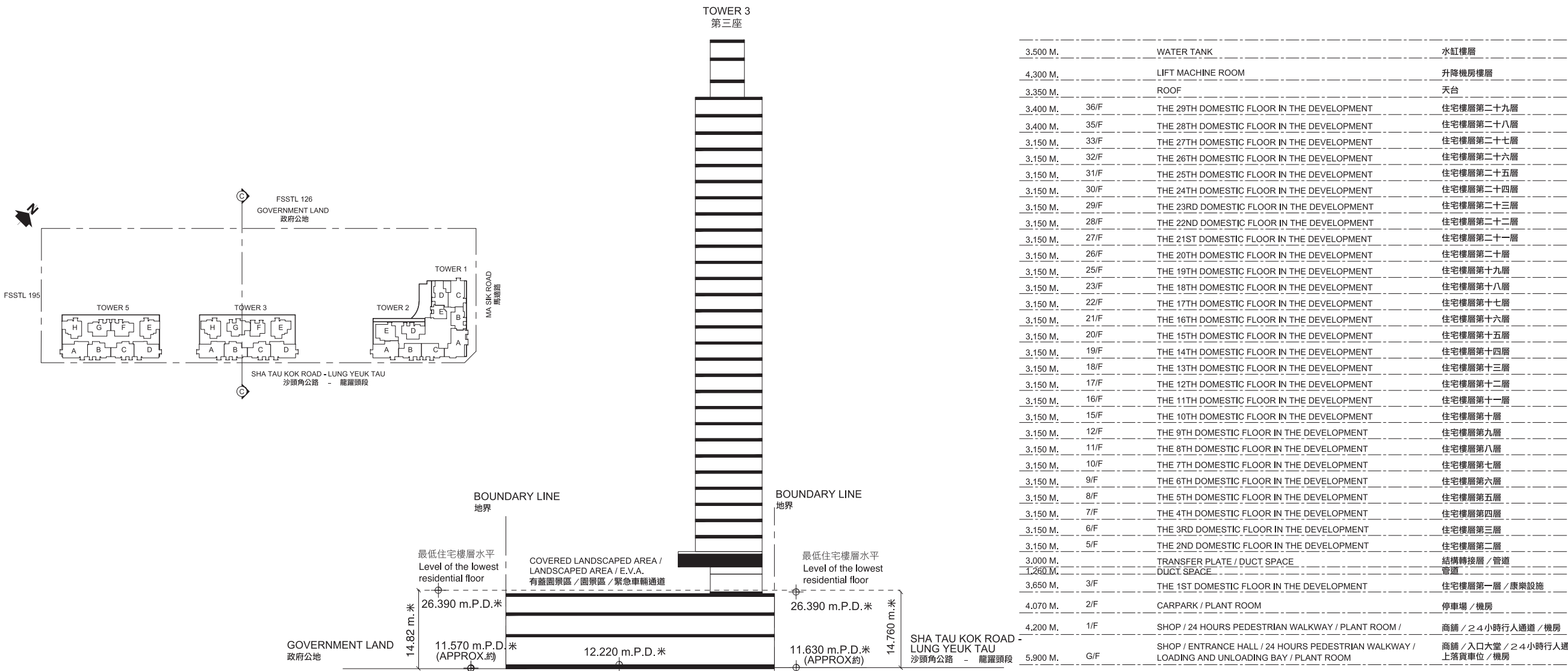
橫截面圖 B-B

Cross - Section Plan B-B



橫截面圖 C-C

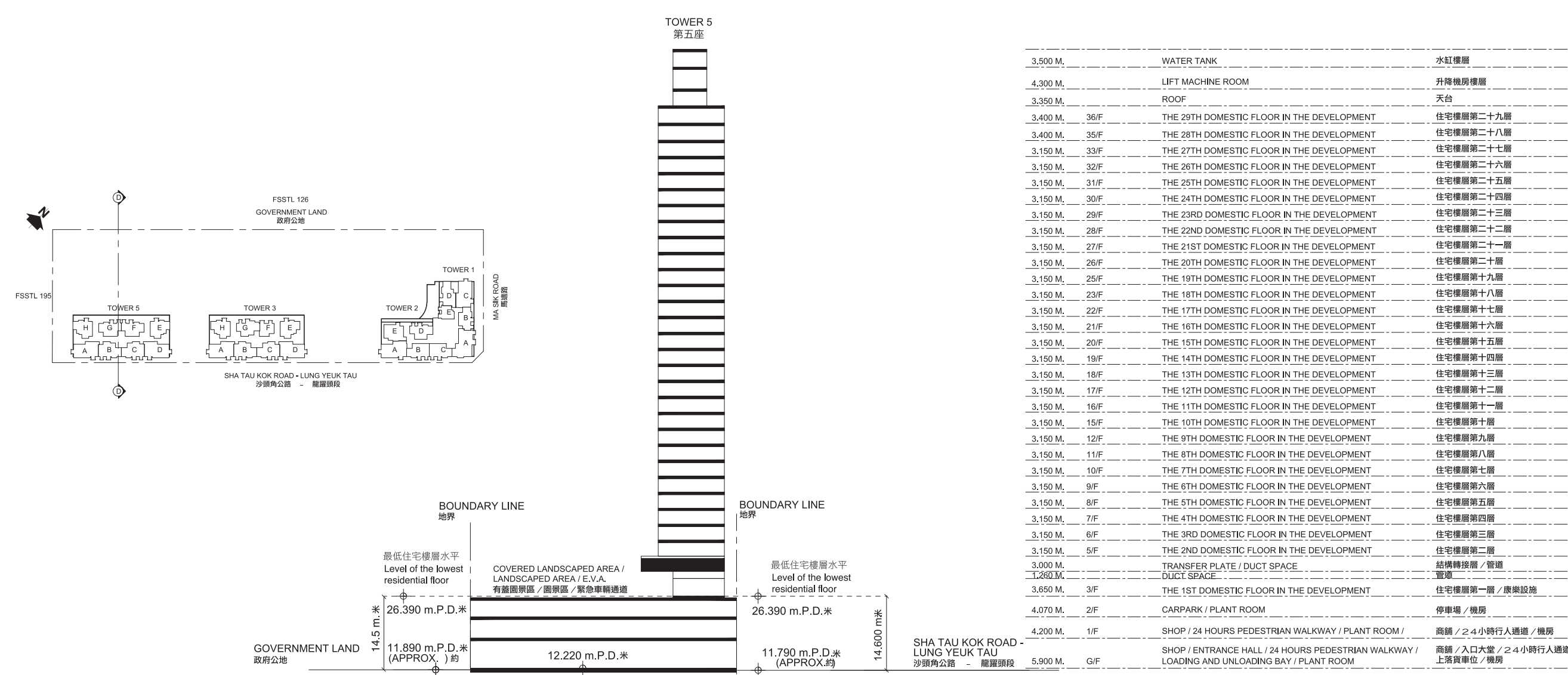
Cross - Section Plan C-C



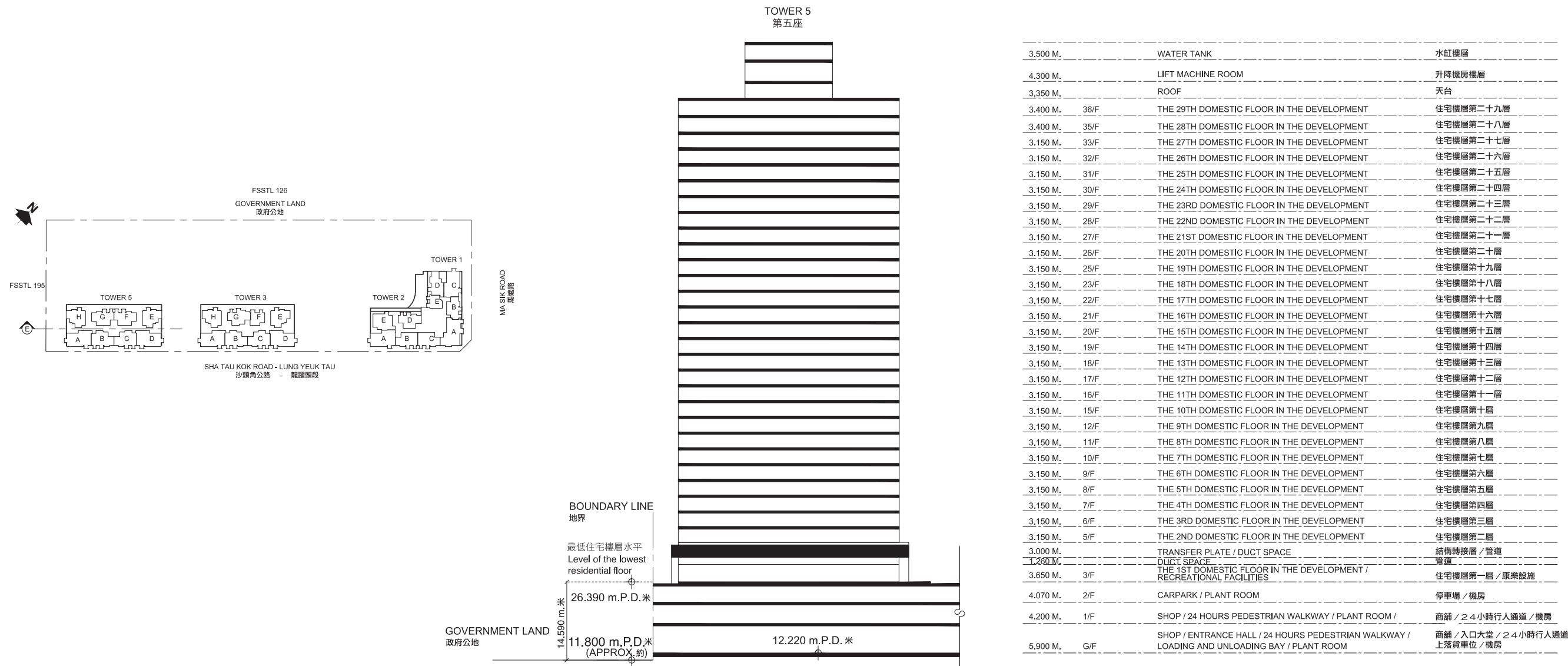
# 發展項目中的建築物的橫截面圖

## CROSS-SECTION PLAN OF BUILDING IN THE DEVELOPMENT

橫截面圖 D-D  
Cross - Section Plan D-D

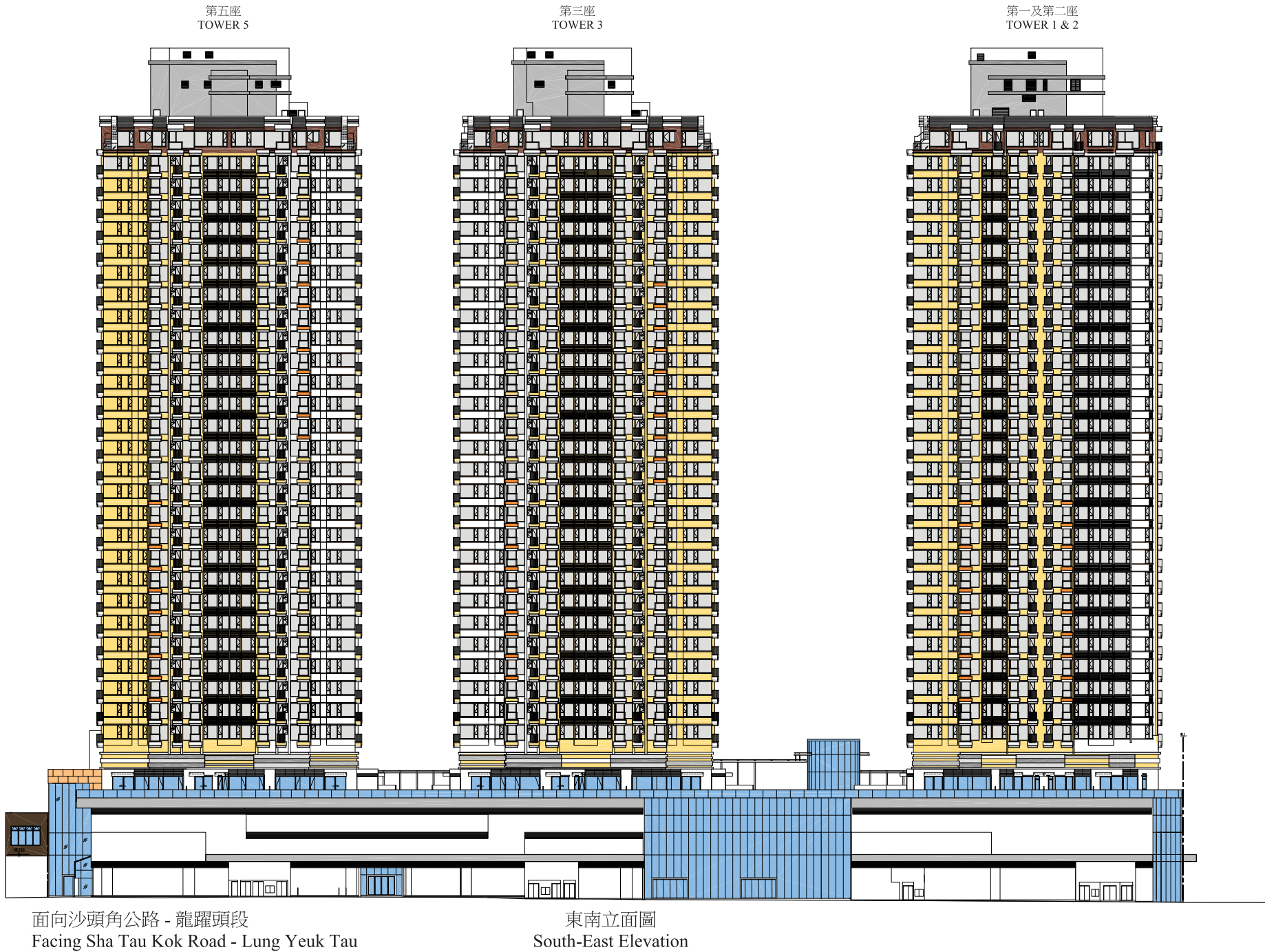


橫截面圖 E-E  
Cross - Section Plan E-E



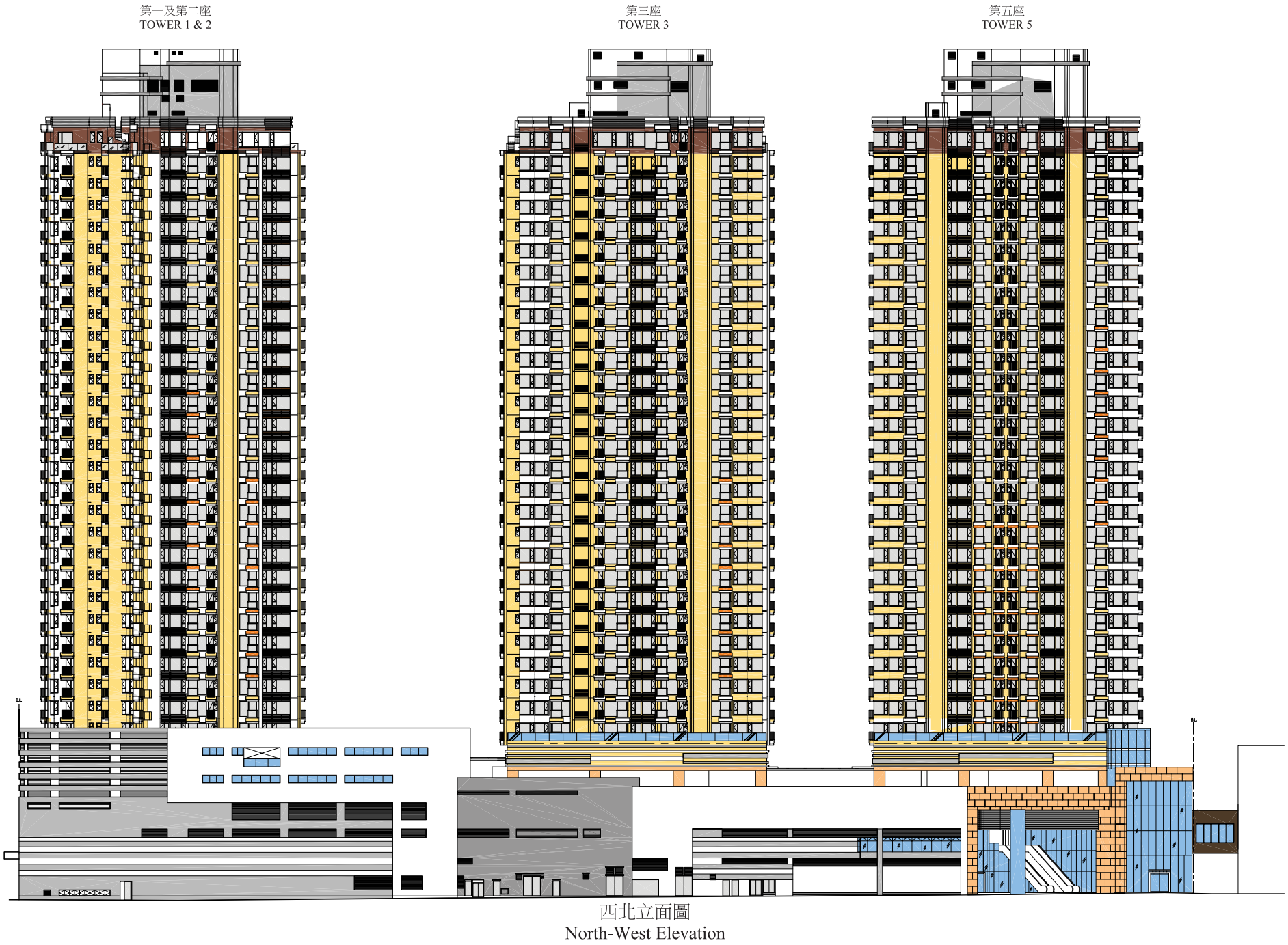


# 立面圖 ELEVATION PLAN



發展項目的認可人士已證明本圖所顯示的立面:  
1.以2014年1月8日的情況為準的該項目的經批准的建築圖則為基礎擬備；及  
2.大致上與該項目的外觀一致。

Authorized person for the development certified that the elevations shown on this plan:  
1. are prepared on the basis of the approved building plans for the development as at 8th January 2014 specified by the authorized person; and  
2. are in general accordance with the outward appearance of the development.

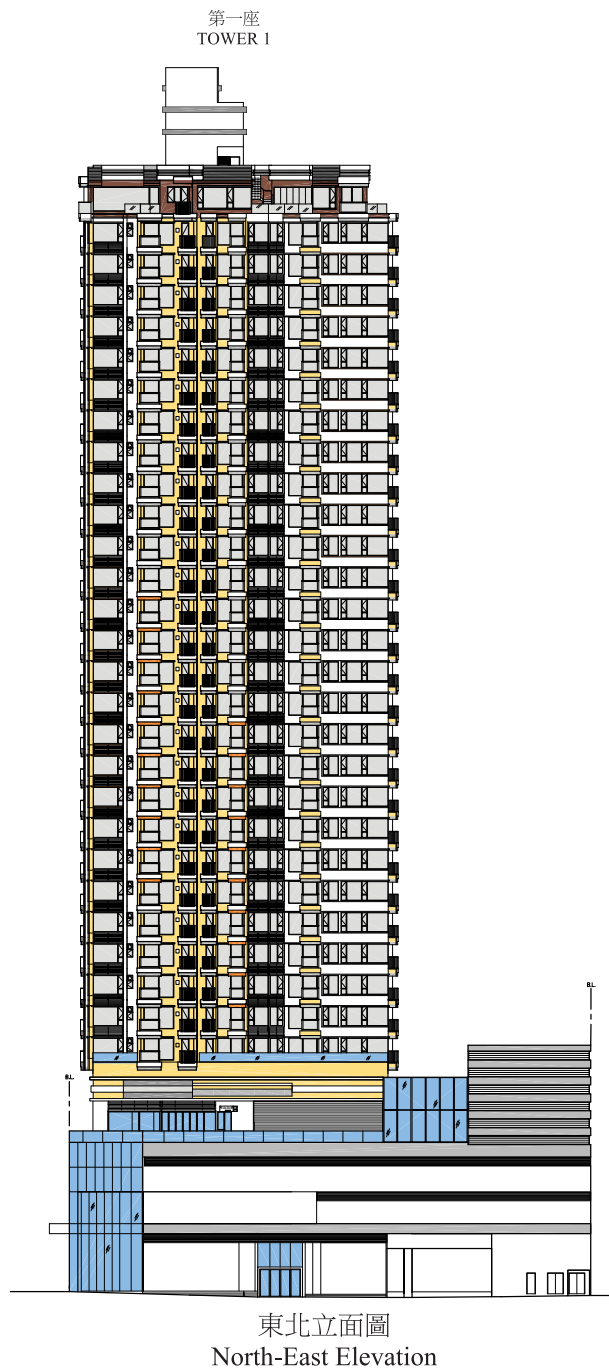
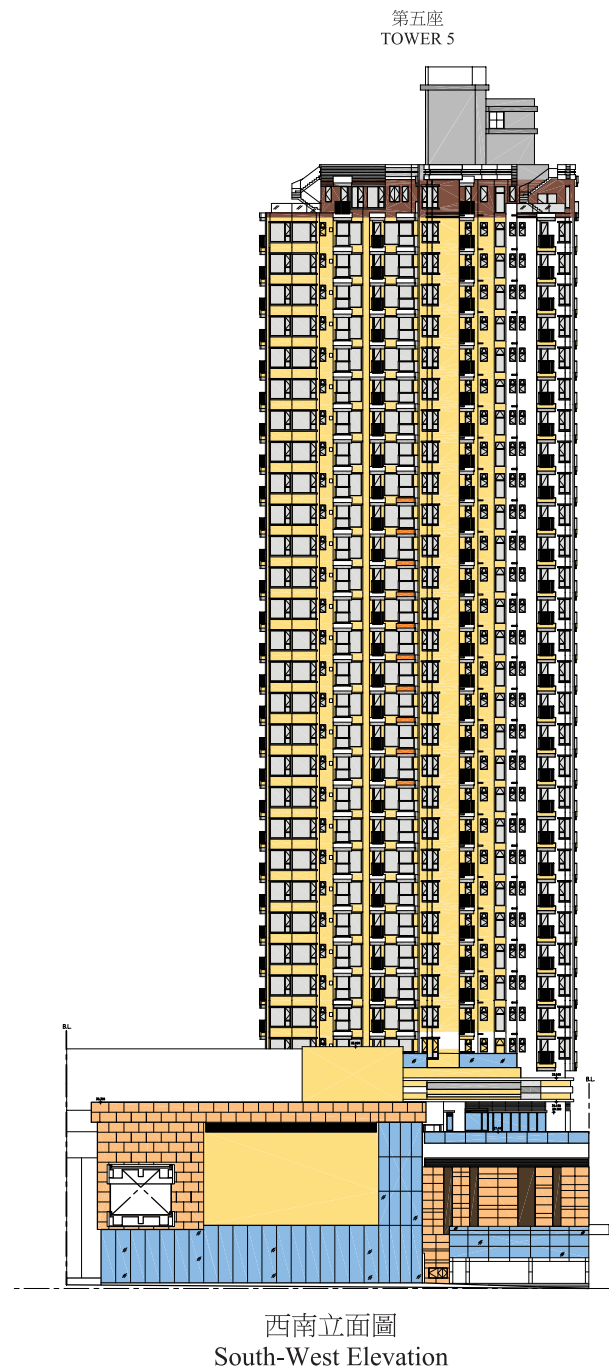


發展項目的認可人士已證明本圖所顯示的立面:  
1.以2014年1月8日的情況為準的該項目的經批准的建築圖則為基礎擬備；及  
2.大致上與該項目的外觀一致。

Authorized person for the development certified that the elevations shown on this plan:  
1. are prepared on the basis of the approved building plans for the development as at 8th January 2014 specified by the authorized person; and  
2. are in general accordance with the outward appearance of the development.



立面圖  
ELEVATION PLAN



發展項目的認可人士已證明本圖所顯示的立面:  
1.以2014年1月8日的情況為準的該項目的經批准的建築圖則為基礎擬備；及  
2.大致上與該項目的外觀一致。

Authorized person for the development certified that the elevations shown on this plan:  
1. are prepared on the basis of the approved building plans for the development as at 8th January 2014 specified by the authorized person; and  
2. are in general accordance with the outward appearance of the development.

發展項目中的公用設施的資料  
INFORMATION ON COMMON FACILITIES IN THE DEVELOPMENT

	有上蓋遮蓋 Covered				沒有上蓋遮蓋 Uncovered			
	住客會所（室內） Residents' Clubhouse (Indoor)		公用花園 Communal Garden		公用花園 Communal Garden		泳池與曬台 Pool and Pool Deck	
面積 Area	平方米 sq. m.	平方呎 sq. ft.	平方米 sq. m.	平方呎 sq. ft.	平方米 sq. m.	平方呎 sq. ft.	平方米 sq. m.	平方呎 sq. ft.
G/F	—	—	192.969	2,077	—	—	—	—
3/F	1,274.795	13,722	491.886	5,295	1,320.672	14,216	891.629	9,597
水平 Level 30.240	640.108	6,890	9.843	106	120.107	1,293	—	—
5/F	—	—	—	—	974.012	10,484	—	—

上述面積按照建築事務監督根據《建築物條例》批准的圖則提供。住客會所及設施實際上由三部分構成，當中包括位於3樓及30.240水平之室內住客會所(13,722平方呎+ 6,890平方呎 = 20,612平方呎)，5樓會所天台花園(10,484平方呎)及3樓室外游泳池及日光曬台(9,597平方呎)，合共40,693平方呎。

The above areas are measured according to the information set out in the building plans approved by the Building Authority under the Buildings Ordinance. The actual clubhouse and facilities comprise of three parts, namely the indoor clubhouse on the 3/F and level 30.240 (i.e 13,722 sq.ft . + 6,890 sq.ft. = 20,612 sq.ft.), the roof garden of the clubhouse on 5/F (10,484 sq.ft.), and the outdoor pool and pool deck on 3/F (9,597 sq.ft.) summing up to 40,693 sq.ft.

備註：以平方呎顯示之面積均依據1平方米=10.764平方呎換算，並四捨五入至整數。  
Note：Areas in square feet are converted at a rate of 1 square metre to 10.764 square feet and rounded to the nearest square foot.

閱覽圖則及公契

INSPECTION OF PLANS AND DEED OF MUTUAL COVENANT

- (1) 備有關於本發展項目的分區計劃大綱圖的文本供閱覽的互聯網網站的網址為www.ozp.tpb.gov.hk
- (2) (a) 以下文件的文本存放在發售有關住宅物業的售樓處，以供閱覽－  
本物業的每一已簽立的公契。  
(b) 無須為閱覽付費。

1. Copies of Outline Zoning Plans relating to the development is available at www.ozp.tpb.gov.hk
2. (a) Copies of the following are available for inspection at the place at which the residential property is offered to be sold -  
every deed of mutual covenant in respect of the residential property that has been executed.  
(b) The inspection is free of charge.

裝置、裝修物料及設備

FITTINGS, FINISHES AND APPLIANCES

1. 外部裝修物料

a.	外牆	平台外牆主要鋪砌玻璃牆、鋁飾板、鋁百葉、瓷磚及天然石材。大廈外牆主要鋪砌瓷磚及鋁百葉。
b.	窗	選用氟碳噴塗鋁窗框；5/F-35/F配清玻璃，3/F及36/F配灰片玻璃，浴室則選用磨砂玻璃。
c.	窗台	窗台用料為鋼筋混凝土及氟碳噴塗鋁窗框。窗台面鋪砌天然石。
d.	花槽	花槽外鋪砌天然石。
e.	陽台或露台	(i) 露台裝有強化玻璃及金屬欄河。外牆鋪砌瓷磚、地台鋪砌地磚。天花髹外牆漆。 (ii) 露台設有上蓋。 (iii) 沒有陽台。
f.	乾衣設施	沒有

2. 室內裝修物料

a.	大堂	
	住宅穿梭升降機地下大堂	地台鋪砌天然石。牆身鋪砌天然石、木皮飾面、鏡飾面及不銹鋼板飾面。天花裝設石膏板假天花。
	住宅樓層升降機大堂(3/F)	地台鋪砌天然石。牆身鋪砌天然石、不銹鋼飾面、鏡飾面及木皮飾面。天花裝設石膏板假天花。
	住宅樓層升降機大堂(5/F-35/F)	地台鋪砌瓷磚。牆身鋪砌瓷磚、鏡飾面及膠板飾面。天花裝設石膏板假天花。
	住宅樓層升降機大堂(36/F)	地台鋪砌天然石。牆身鋪砌天然石、木皮飾面、鏡飾面及膠板飾面。天花裝設石膏板假天花。
b.	內牆及天花板	各住宅單位廳、房內牆使用石膏磚牆及石矢牆，石膏磚牆批纖維灰及髹乳膠漆，石矢牆批英泥沙底纖維灰及髹乳膠漆；天花則批纖維灰及髹乳膠漆。 <u>適用於第3座3樓A單位</u> 客飯廳內牆鋪砌牆紙、雲石、木飾面、鏡及不銹鋼。天花批纖維灰及髹乳膠漆。 主人睡房內牆鋪砌牆紙及飾面板。天花批纖維灰及髹乳膠漆。 睡房內牆鋪砌牆紙。天花批纖維灰髹乳膠漆。
c.	內部地板	客飯廳及睡房地台鋪砌複合木地板及木腳線。 <u>適用於第3座3樓A單位</u> 客飯廳地台鋪砌大理石，睡房地台鋪砌複合木地板及木腳線。
d.	浴室(5/F-35/F)	外露地台鋪砌瓷磚，外露牆身鋪砌瓷磚及玻璃飾板至假天花，天花裝設石膏板假天花及照明燈飾。
	浴室(3/F及36/F)	外露地台鋪砌天然石，外露牆身鋪砌天然石及玻璃飾板至假天花，天花裝設石膏板假天花及照明燈飾。
e.	廚房(5/F-35/F)	外露牆身鋪砌瓷磚及玻璃飾板至假天花。外露地台鋪砌瓷磚。檯面鋪設無縫人造塑料。天花裝設石膏板及木夾板假天花及照明燈飾。
	廚房(3/F及36/F)	外露牆身鋪砌天然石及玻璃飾板至假天花。外露地台鋪砌天然石。檯面鋪設無縫人造塑料。天花裝設石膏板及木夾板假天花及照明燈飾。



裝置、裝修物料及設備

FITTINGS, FINISHES AND APPLIANCES

3. 室內裝置

a.	門	
	標準單位大門(5/F-35/F)	選用膠板飾面防火實心木門配防盜眼、門鼓、門鎖及門擋。
	特色單位大門(3/F及36/F)	選用木皮飾面防火實心木門配防盜眼、門鼓、門鎖及門擋。
	標準睡房門(5/F-35/F)	選用膠板飾面中空木門配門鎖及門擋。
	特色睡房門(3/F及36/F)	選用木皮飾面中空木門配門鎖及門擋。
	標準浴室門(5/F-35/F)	選用膠板飾面中空木門配門鎖及門擋。
	特色浴室門(3/F及36/F)	選用木皮飾面中空木門配門鎖及門擋。
	標準廚房門(5/F-35/F)	選用膠板飾面防火實心木門配門鎖、門擋、門鼓及鑲配玻璃。
	特色廚房門(3/F及36/F)	選用木皮飾面防火實心木門配門鎖、門擋、門鼓及鑲配玻璃#。
b.	浴室(5/F-35/F) (不包括儲物間廁所)	選用無縫人造塑料檯面配以潔具包括鍍鉻洗手盆水龍頭、鍍鉻浴缸花灑套裝、搪瓷洗手盆、搪瓷鑄鐵浴缸(1500毫米長X750毫米闊X420毫米深*)、搪瓷坐廁、不銹鋼毛巾架、不銹鋼廁紙架、木製鏡櫃、玻璃燈飾及抽氣扇或換氣暖風機。供水系統的類型及用料見下文「供水」一欄。隨樓附送設備及品牌，請參考「設備說明」。
	浴室(3/F及36/F) (不包括儲物間廁所)	選用無縫人造塑料檯面配以潔具包括鍍鉻洗手盆水龍頭、鍍鉻浴缸花灑套裝、搪瓷洗手盆、搪瓷鑄鐵浴缸(1500毫米長 X 750毫米闊X 420毫米深*)、搪瓷坐廁、不銹鋼毛巾架、不銹鋼廁紙架、木製鏡櫃、玻璃燈飾及換氣暖風機。其他設備包括浴室電視、強化玻璃淋浴間及淋浴系統(只適用於主人套房浴室)，煤氣熱水爐 (適用於「設備說明」內指定單位)。供水系統的類型及用料見下文「供水」一欄。隨樓附送設備及品牌，請參考「設備說明」。
c.	廚房(5/F-35/F)	選用木製櫥櫃系列，配以櫥櫃門板及無縫人造塑料檯面連洗滌盆及鍍鉻冷熱水龍頭，另設有嵌入式氣體煮食爐、抽油煙機、雪櫃、洗衣乾衣機、微波爐、抽氣扇及煤氣熱水爐。供水系統的用料見下文「供水」一欄。隨樓附送設備及品牌，請參考「設備說明」。
	廚房(3/F及36/F)	選用木製櫥櫃系列，配以櫥櫃門板及無縫人造塑料檯面連洗滌盆及鍍鉻冷熱水龍頭，另設有嵌入式氣體煮食爐、抽油煙機、雪櫃、洗衣乾衣機、微波焗爐、廚房電視、抽氣扇。其他設備包括冷氣機(第2座3/F A及B單位除外)及煤氣熱水爐(適用於「設備說明」內指定單位)。供水系統的用料見下文「供水」一欄。隨樓附送設備及品牌，請參考「設備說明」。
d.	睡房	沒有
e.	電話	客飯廳及睡房均裝有電話插座。接駁點及位置請參考「機電裝置平面圖」。
f.	天線	客飯廳及睡房裝有本地電視 / 電台接收插座。接駁點及位置請參考「機電裝置平面圖」。
g.	電力裝置	客飯廳、睡房、廚房及浴室均裝有暗藏鋪砌燈掣及插座。每戶提供單相電力並裝妥微型斷路器，部份特式單位提供三相電力並裝妥微型斷路器，(特色單位包括1座3/F A單位及36/F A,B單位；2座3/F C單位及36/F A單位；3座3/F A,B,C單位及 36/F A,B單位；5座3/F A,B,C單位及36/F A,B單位)。導管是部分隱藏及部分外露 <sup>1</sup> 。接駁點及位置請參考「機電裝置平面圖」。
h.	氣體供應	每戶廚房裝有煤氣喉接駁煤氣煮食爐及煤氣熱水爐，並裝有獨立煤氣錶。
i.	洗衣機接駁點	廚房均設有洗衣機來去水接駁喉位。有關位置請參考「機電裝置平面圖」。
j.	供水	冷熱水喉採用銅喉。水管是部分隱藏及部分外露 <sup>2</sup> 。廚房或浴室裝有煤氣熱水爐供應廚房及浴室熱水(除第1座5/F-35/F A單位的儲物室廁所則以電熱水爐供應熱水)。

4. 雜項

a.	升降機(L1-L18)	本發展項目裝置18部"奧的斯"升降機。第1座及第2座共設有4部客用升降機(型號:OH5000(XOEC))直達3/F至36/F各住宅樓層；第3座及第5座各設有3部客用升降機(型號:OH5000(XOEC))直達3/F至36/F各住宅樓層。基座共設8部升降機(型號:GenN2-Regen(XOEC)及Traction (ELEX))。
b.	信箱	各座3/F住宅入口大堂設有住戶專用不銹鋼信箱。
c.	垃圾收集	每層住宅樓層均設有垃圾收集房。另中央垃圾收集房設於地下樓層，由清潔工人定時收集垃圾。
d.	水錶、電錶及氣體錶	每戶於單位內裝有獨立煤氣錶。另每層錶房均裝有每戶專用之獨立水、電錶。

備註：# 部份特色廚房選用玻璃門配門鎖(即第1座36/F之A單位，第2座3/F之C單位，第3座3/F之A,C單位及第5座3/F之A,C單位)。

\* 下列單位浴室的搪瓷鑄鐵浴缸的尺寸為1500毫米長X700毫米闊X420毫米深：第1座5/F-35/F A單位之主人房浴室，5/F-35/F D單位之浴室及第36/F A單位之主人房浴室；第2座36/F A單位之主人房浴室；第3座5/F-35/F G單位之浴室。

1 除部分隱藏於混凝土內之導管外，其他部分的導管均為外露。外露的導管可能被假天花、假陣、貯存櫃、覆面、非混凝土間牆、指定之槽位或其他物料遮蓋。

2 除部分隱藏於混凝土內之水管外，其他部分的水管均為外露。外露的水管可能被假天花、假陣、貯存櫃、覆面、非混凝土間牆、指定之槽位或其他物料遮蓋。

5. 保安設施

a.	保安系統	住宅入口大堂、停車場電梯大堂、停車場、住客康樂設施、園藝花園及各升降機均裝有閉路電視，直接通往大廈保安/大堂管理處。
b.	入口通道控制系統	住宅入口大堂與各住宅單位設有訪客對講系統。住客出入口設有「八達通」系統及密碼鎖開啟的大門。停車場入口裝置監察系統。

6. 各座 5/F - 35/F 設備說明

位置	設備	適用單位	品牌	型號
客飯廳、睡房及儲物間	分體式冷氣機	所有單位	Electrolux	見第90-1頁
廚房	煤氣煮食爐	第1座A、B、C及D單位；第2座所有單位；第3座A、B、C、D、E、G及H單位；第5座所有單位	西門子	ER70762HK
		第1座E單位及第3座F單位	西門子	ER326BB90X
	抽油煙機	第1座B、D及E單位；第2座B、C、D及E單位；第3座及第5座B、C、E、F、G及H單位	西門子	LI46630
		第1座A及C單位；第2座A單位；第3座及第5座A及D單位	西門子	LI46930
	抽氣扇	所有單位	KDK	15WHC08
	煤氣熱水爐 (置於假天花上)	所有單位	TGC	TRJW221TFQL
	微波爐	所有單位	西門子	HF25G5L2
	洗衣乾衣機	所有單位	西門子	WK14D540HK
	雪櫃	第1座A、B、C及D單位；第2座所有單位；第3座A、B、C、D、E、G及H單位；第5座所有單位	西門子	K128VA20FF
		第1座E單位及第3座F單位	西門子	KU15LA65
浴室	抽氣扇	第1座A單位之主人房浴室	KDK	15WHC08
		第1座C及D單位、第2座A及E單位、第3座及第5座A、D、E及H單位之所有浴室		
	管道式抽氣扇	第1座A單位之儲物間廁所	KDK	FV-15NS3H
	浴室換氣暖風機及加壓抽氣扇	第1座B及E單位、第2座B、C及D單位、第3座及第5座B、C、F及G單位之所有浴室	KDK	40BDAH及FV-14CG1H
		第1座A單位之客浴室		
	儲水式電熱水爐	第1座A單位之儲物間廁所	電寶	HPU-3.5”

裝置、裝修物料及設備

FITTINGS, FINISHES AND APPLIANCES

7. 各座 3/F 及 36/F 設備說明

位置	設備	適用單位	品牌	型號
客飯廳、睡房及儲物間	分體式冷氣機	所有單位	Electrolux	見第90-1頁
		第3座3樓A單位	Whirlpool	
廚房	煤氣煮食爐(單爐頭及雙爐頭)	所有單位	Gaggenau	VG231334SG/VG232334SG
	電烤爐	第1座3/F之A單位及36/F之A及B單位；第2座3/F之C單位及36/F之A單位；	Gaggenau	VR230134
		第3座3/F之A、B及C單位及36/F之A、B及D單位；第5座3/F之A、B及C單位及36/F之A及B單位		
	抽油煙機	所有單位(第5座3/F之C單位除外)	Gaggenau	AH900191
		第5座3/F之C單位	Gaggenau	AI200102
	管道式抽氣扇	所有單位	KDK	FV-15NS3H
	煤氣熱水爐 (置於假天花上)	所有單位	TGC	TRJW221TFQL
	微波焗爐	所有單位	Gaggenau	BM270110
	洗衣乾衣機	所有單位	西門子	WK14D540HK
	雪櫃	所有單位	Gaggenau	RB280302
	冷氣機 (置於假天花上)	所有單位(第2座3/F之A及B單位除外)	Electrolux	EMTBI-12HRDN1
浴室	廚房電視	所有單位	JSA	KTV102A
		第1座之所有單位、第2座3/F之C單位及36/F之A及B單位之主人套房浴室；	JSA	TMBG10
		第3座3/F之A及C單位及36/F之A、B及D單位、第5座3/F之A及C單位及36/F之A及B單位之主人套房浴室		
	浴室換氣暖風機	所有設有窗戶之浴室(儲物間廁所除外)	KDK	40BDAH
	浴室換氣暖風機及加壓抽氣扇	所有不設窗戶之浴室(儲物間廁所除外)	KDK	40BDAH及FV-14CG1H
	管道式抽氣扇	所有不設窗戶之儲物間廁所	KDK	FV-15NS3H
	抽氣扇	所有設有窗戶之儲物間廁所，即第1座36/F之B單位，第3座36/F之A,B單位及第5座36/F之A,B單位及3/F之C單位	KDK	15WHC08
	煤氣熱水爐 (置於假天花上)	第1座3/F之A單位套房浴室	TGC	TRJW221TFQL
		第3座36/F之A及B單位主人房浴室		
		第5座36/F之A及B單位主人房浴室		

賣方承諾如該項目中沒有安裝指明的品牌名稱或產品型號的升降機或設備，便會安裝品質相若的升降機或設備。

1. Exterior Finishes

a.	External Wall	Podium mainly finished with glass wall, aluminium cladding, aluminium louvres, ceramic wall tiles & natural stone cladding. Towers mainly finished with ceramic wall tiles and aluminium louvres.
b.	Window	All windows frame with fluorocarbon coating. Fixed with clear glass for windows of 5/F to 35/F and grey tinted glass for windows of 3/F & 36/F. Sand blasted glass to be fixed at bathroom windows.
c.	Bay Window	The material of bay window is reinforced concrete with fluocarbon-coated aluminium window frame. Natural stone window sills.
d.	Planter	Exterior of planter finished with natural stone.
e.	Verandah or Balcony	(i) Balcony to be fitted with tempered glass and metal balustrade. Walls to be finished with ceramic wall tiles and floor to be finished with floor tiles. Ceilings to be finished with external paint. (ii) Balcony is covered. (iii) There is no verandah.
f.	Drying facilities for clothing	Nil

2. Interior Finishes

a.	Lift Lobby	
	Shuttle Lift Lobby (G/F)	Floor finished with natural stone. Wall finished with natural stone, timber veneered, tinted mirror & stainless steel feature panels. Gypsum board false ceiling are provided.
	Tower Lift Lobby (3/F)	Floor finished with natural stone. Wall finished with natural stone, stainless steel, tinted mirror & timber veneered panels. Gypsum board false ceiling are provided.
	Typical Lift Lobby (5/F to 35/F)	Floor finished with ceramic tiles. Wall finished with ceramic tiles, tinted mirror & plastic laminated panels. Gypsum board false ceiling are provided.
	Special Unit Lift Lobby (36/F)	Floor finished with natural stone. Wall finished with natural stone, timber veneered, tinted mirror & plastic laminated panels. Gypsum board false ceiling are provided.
b.	Internal wall and ceiling	The internal partitions for living room, dining room and bedrooms of each residential unit making up of gypsum block wall and concrete wall. Gypsum block wall finished with emulsion paint on skim coat. Concrete wall finished with emulsion paint on cement sand plastering and skim coat. Ceiling to be finished with emulsion paint on skim coat. <u>Applicable for Tower 3 3/F Unit A</u> Walls of living room and dining room finished with wall paper, marble, wood veneer, mirror and stainless steel. Ceiling finished with emulsion paint on skim coat. Walls of master room finished with wall paper and feature panels. Ceiling finished with emulsion paint on skim coat. Walls of rooms finished with wall paper. Ceiling finished with emulsion paint on skim coat.
c.	Internal floor	Floor finished with wood strip engineered timber flooring and timber skirting in all living room, dining room and bedrooms. <u>Applicable for Tower 3 3/F Unit A</u> Floor of living room and dining room finished with marble while bedrooms finished with wood strip engineered timber flooring and timber skirting.
d.	Typical Unit Bathroom (5/F to 35/F)	Wall finished with ceramic tiles and feature glass panel to exposed surface and run up to false ceiling level. Gypsum board false ceiling with light fitting are provided. Floor finished with ceramic tiles to exposed surface.
	Special Unit Bathroom (3/F & 36/F)	Wall finished with natural stone and feature glass panel to exposed surface and run up to false ceiling level. Gypsum board false ceiling with light fitting are provided. Floor finished with natural stone to exposed surface.
e.	Typical Unit Kitchen (5/F to 35/F)	Wall finished with ceramic tiles & feature glass panel to exposed surface and up to false ceiling level. Gypsum board and plywood false ceiling with light fitting are provided. Floor finished with ceramic tiles to exposed surface. Counter top finished with solid surfacing material.
	Special Unit Kitchen (3/F & 36/F)	Wall finished with natural stone & feature glass panel to exposed surface up to false ceiling level. Gypsum board and plywood false ceiling with light fitting are provided. Floor finished with natural stone to exposed surface. Counter top finished with solid surfacing material.



裝置、裝修物料及設備

FITTINGS, FINISHES AND APPLIANCES

3. Interior Fittings

a.	Door	
	Typical Unit Main Entrance Door (5/F to 35/F)	Fire-rated solid core plastic laminated door, fitted with eye view, door closer, lockset and door stopper.
	Special Unit Main Entrance Door (3/F & 36/F)	Fire-rated solid core timber veneered door, fitted with eye view, door closer, lockset and door stopper.
	Typical Unit Bedroom Door (5/F to 35/F)	Hollow core plastic laminated door, fitted with lockset and door stopper.
	Special Unit Bedroom Door (3/F & 36/F)	Hollow core timber veneered door, fitted with lockset and door stopper.
	Typical Unit Bathroom Door (5/F to 35/F)	Hollow core plastic laminated door, fitted with lockset and door stopper.
	Special Unit Bathroom Door (3/F & 36/F)	Hollow core timber veneered door, fitted with lockset and door stopper.
	Typical Unit Kitchen Door (5/F to 35/F)	Fire-rated solid core plastic laminated door, fitted with clear glass vision panel, door closer, lockset and door stopper.
	Special Unit Kitchen Door (3/F & 36/F)	Fire-rated solid core timber veneered door, fitted with clear glass vision panel, door closer, lockset and door stopper <sup>#</sup> .
b.	Bathroom at Typical Unit 5/F - 35/F (except store toilet)	Fitted with solid surfacing material countertop and sanitary wares and fittings include chrome plated wash basin mixer, chrome plated bath mixer & shower set, vitreous china wash basin, enamelled cast-iron bathtub (1500mm L X 750mm W X 420mm D*), vitreous china water closet, stainless steel towel bar, stainless steel paper holder, wooden mirror cabinet, glass lighting fixtures and exhaust fan or thermal ventilator. See "Water Supply" below for type and material of water supply system. For appliances provision and brand names, please refer to "Appliances Schedule".
	Bathroom at Special Unit 3/F & 36/F (except store toilet)	Fitted with solid surfacing material countertop and sanitary wares and fittings include chrome plated wash basin mixer, chrome plated bath mixer & shower set, vitreous china wash basin, enamelled cast-iron bathtub (1500mm L X 750mm W X 420mm D*), vitreous china water closet, stainless steel towel bar, stainless steel paper holder, wooden mirror cabinet, thermo ventilator, glass lighting fixtures. Other fittings include bathroom TV and tempered glass shower cubical & shower set (for master bedroom ensuite bathroom only) and gas water heater are provided (for units specified in Appliance Schedule). See "Water Supply" below for type and material of water supply system. For appliances provision and brand names, please refer to "Appliances Schedule".
c.	Kitchen at Typical Unit 5/F - 35/F	Fitted with wooden cabinet with door panel and solid surfacing material countertop & sink with chrome plated sink mixer, built-in gas cooker, cooker hood, refrigerator, washer and dryer, microwave oven, exhaust fan, and gas water heater are provided. See "Water Supply" below for material of water supply system. For appliances provision and brand names, please refer to "Appliances Schedule".
	Kitchen at Special Unit 3/F & 36/F	Fitted with wooden cabinet with door panel and solid surfacing material countertop & sink with chrome plated sink mixer, built-in gas cooker, cooker hood, refrigerator, washer and dryer, combi-microwave oven, kitchen TV, exhaust fan. Other fittings include air-conditioner (except Unit A&B of 3/F of Tower 2) and gas water heater are provided (for units specified in Appliance Schedule). See "Water Supply" below for material of water supply system. For appliances provision and brand names, please refer to "Appliances Schedule".
d.	Bedroom	Nil
e.	Telephone	Telephone outlets are provided for living room, dining room and bedrooms. For location and number of connection points, please refer to "Mechanical & Electrical Provision Plan".
f.	Aerials	TV / FM outlets for local TV / FM radio programs are provided for living room, dining room and bedrooms. For location and number of connection points, please refer to "Mechanical & Electrical Provision Plan".
g.	Electrical Installations	Concealed conduit wiring for lighting and power points are provided. Single phase electricity supply with miniature circuit breaker distribution board is provided in residential units, except that three phase electricity supply with miniature circuit breaker distribution board is provided in the following special units (i.e. Tower 1 3/F Unit A , 36/F Unit A & B; Tower 2 3/F Unit C , 36/F Unit A; Tower 3 3/F Unit A, B & C, 36/F Unit A & B; Tower 5 3/F Unit A , B & C, 36/F Unit A & B ). Conduits are partly concealed and partly exposed <sup>1</sup> . For location and number of connection points, please refer to "Mechanical & Electrical Provision Plan".
h.	Gas Supply	Gas meter with gas supply pipe is provided and connected to gas cooker and gas water heater in kitchen for all units.
i.	Washing Machine Connection Point	Drain point and water point are provided for washing machine in kitchen. Please refer to "Mechanical & Electrical Provision Plan" for the location of the connection point.
j.	Water supply	Copper water pipes for hot and cold water supply. Water pipes are partly concealed and partly exposed <sup>2</sup> . Hot water supply to bathroom and kitchen is provided by gas water heater installed in bathroom or kitchen, except that the hot water supply to store toilet of 5/F-35/F Unit A of Tower 1 is provided by electric water heater.

Remarks : # Some special unit kitchens are provided with glass door and lockset (i.e. Tower 1 36/F Unit A, Tower 2 3/F Unit C, Tower 3 3/F Unit A,C and Tower 5 3/F Unit A,C).  
\* Size of the enamelled cast-iron bathtub of the following units is 1500mm L X 700mm W X 420mm D : Tower 1 5/F-35/F Unit A (master bathroom), 5/F-35/F Unit D (bathroom) & 36/F Unit A (master bathroom) ; Tower 2 36/F Unit A (master bathroom) ; Tower 3 5/F-35/F Unit G (bathroom).  
<sup>1</sup> Other than those parts of the conduits concealed within concrete, the rest of them are exposed. The exposed conduits may be covered or hidden by false ceilings, bulkheads, cabinets, claddings, non-concrete partition walls, designated pipe ducts or other materials.  
<sup>2</sup> Other than those parts of the water pipes concealed within concrete, the rest of them are exposed. The exposed water pipes may be covered or hidden by false ceilings, bulkheads, cabinets, claddings, non-concrete partition walls, designated pipe ducts or other materials.

4. Miscellaneous

a.	Lifts (L1 - L18)	18 Nos. of ‘OTIS’ lifts are to be installed for this development. Tower 1 & 2 is served by a total of four lifts (model no.:OH5000(XOEC)) serving 3/F to 36/F all residential floors. Tower 3 and 5 is each served by three lifts (model no.:OH5000(XOEC)) serving all 3/F to 36/F residential floors. Eight lifts (model no.:GenN2-Regen(XOEC)and Traction (ELEX)) to be installed for podium.
b.	Letter Box	Letter boxes finished with stainless steel are installed at the 3/F podium main lobby of each residential tower.
c.	Refuse collection	Refuse storage room is provided in the common area of each residential floor. Refuse storage and material recovery room is provided on G/F for collection of refuse by cleaners.
d.	Water meter, electricity meter and gas meter	Gas meter is provided in individual units while separate meters of water and electricity for each individual unit are provided in common meter rooms on respective residential floors.

5. Security Facilities

a.	Security System	CCTV system is provided at residential entrance lobbies, carpark, resident recreational facilities, landscaped garden and all lifts connecting directly to the security / caretaker counter.
b.	Access Control System	Visitor panels are provided at the residential entrances. Visitor panels built-in with Octopus Card access reader and combination lock for resident access. Vehicular control system is installed at the carpark main entrance.

裝置、裝修物料及設備

FITTINGS, FINISHES AND APPLIANCES

6. Appliances Schedule for Typical Units (5/F to 35/F) of all Towers

Location	Appliances	Units apply	Brand	Model No.
Living/Dining/ Bedroom / Store	Split type air-conditioner	For all units	Electrolux	Refer to P.90-1
Kitchen	Gas Cooker	Unit A, B, C and D of Tower 1; all units of Tower 2; Unit A, B, C, D, E, G and H of Tower 3 and all units of Tower 5	Siemens	ER70762HK
		Unit E of Tower 1 and Unit F of Tower 3	Siemens	ER326BB90X
	Cooker Hood	Unit B, D and E of Tower 1; Unit B, C, D and E of Tower 2; Unit B, C, E, F, G and H of Tower 3 and Tower 5	Siemens	LI46630
		Unit A and C of Tower 1; Unit A of Tower 2; Unit A and D of Tower 3 and Tower 5	Siemens	LI46930
	Exhaust Fan	For all units	KDK	15WHC08
	Gas Water Heater (Mounted above false ceiling)	For all units	TGC	TRJW221TFQL
	Microwave Oven	For all units	Siemens	HF25G5L2
	Washer / Dryer	For all units	Siemens	WK14D540HK
		Unit A, B, C and D of Tower 1; all units of Tower 2; Unit A, B, C, D, E, G and H of Tower 3 and all units of Tower 5	Siemens	K128VA20FF
	Refrigerator	Unit E of Tower 1 and Unit F of Tower 3	Siemens	KU15LA65
Bathroom	Exhaust Fan	Master bathroom of Unit A of Tower 1	KDK	15WHC08
		For all bathrooms of Unit C and D of Tower 1; Unit A and E of Tower 2; Unit A, D, E and H of Tower 3 and Tower 5		
	In-line Duct Fan	Store toilet of Unit A of Tower 1	KDK	FV-15NS3H
	Thermo Ventilator and Booster Fan	For all bathrooms of Unit B and E of Tower 1; Unit B, C and D of Tower 2; Unit B, C, F and G of Tower 3 and Tower 5	KDK	40BDAH and FV-14CG1H
		Guest bathroom of Unit A of Tower 1		
	Electric Storage Water Heater	Store toilet of Unit A of Tower 1	Hotpool	HPU-3.5”

7. Appliances Schedule for Special Units (3/F and 36/F) of all Towers

Location	Appliances	Units apply	Brand	Model No.
Living / Dining / Bedroom / Store	Split type air-conditioner	For all units	Electrolux	Refer to P.90-1
		3/F Unit A of Tower 3	Whirlpool	
Kitchen	Gas Cooker or Gas Hob (Single & double-burner)	For all units	Gaggenau	VG231334SG/VG232334SG
	Electric Grill	3/F Unit A and 36/F Unit A & B of Tower 1; 3/F Unit C and 36/F Unit A of Tower 2; 3/F Unit A, B & C and 36/F Unit A, B & D of Tower 3; 3/F Unit A, B & C and 36/F Unit A & B of Tower 5	Gaggenau	VR230134
	Cooker Hood	For all units (except 3/F Unit C of Tower 5)	Gaggenau	AH900191
		3/F Unit C of Tower 5	Gaggenau	AI200102
	In-line Duct Fan	For all units	KDK	FV-15NS3H
	Gas Water Heater (Mounted above false ceiling)	For all units	TGC	TRJW221TFQL
	Combi-Microwave Oven	For all units	Gaggenau	BM270110
	Washer / Dryer	For all units	Siemens	WK14D540HK
	Refrigerator	For all units	Gaggenau	RB280302
	Air-conditioner (Mounted above false ceiling)	For all units ( except 3/F Unit A and B of Tower 2)	Electrolux	EMTBI-12HRDN1
	Kitchen TV	For all units	JSA	KTV102A
		For master bathroom of all units of Tower 1; 3/F Unit C and 36/F Unit A & B of Tower 2; For master bathroom of 3/F Unit A & C and 36/F Unit A, B & D of Tower 3; 3/F Unit A & C and 36/F Unit A & B of Tower 5	JSA	TMBG10
	Thermo Ventilator	For all bathroom with window. (except store toilet)	KDK	40BDAH
Bathroom	Thermo Ventilator and Booster Fan	For all bathroom without window. (except store toilet)	KDK	40BDAH and FV-14CG1H
	In-line Duct Fan	For all store toilet without window.	KDK	FV-15NS3H
	Exhaust Fan	For store toilet with window (i.e. 36/F Unit B of Tower 1, 36/F Unit A&B of Tower 3, 36/F Unit A&B and 3/F Unit C of Tower 5)	KDK	15WHC08
	Gas Water Heater (Mounted above false ceiling)	For suite bathroom of 3/F Unit A of Tower 1;	TGC	TRJW221TFQL
		For master bathroom of 36/F Unit A & B of Tower 3; For master bathroom of 36/F Unit A & B of Tower 5		

The vendor undertakes that if lifts or appliances of the specified brand name or model number are not installed in the development, lifts or appliances of comparable quality will be installed.



裝置、裝修物料及設備

FITTINGS, FINISHES AND APPLIANCES

空調設備型號列表

Schedule of Air-Conditioning System Model Number

Tower 座		1			2			3							5											
Floor 樓層		3/F	36/F		3/F			36/F			3/F			36/F				3/F			36/F					
Model No. 型號		Unit 單位		A	A	B	A	B	C	A	B	C	A	B	C	D	E	A	B	C	A	B	C	D	E	F
Indoor Unit 室內機	EMSR1-09CRN1	✓	✓	✓	—	—	—	✓	✓	✓	—	—	—	✓	✓	—	✓	—	—	—	✓	✓	—	✓	✓	—
	EMSR1-12CRN1	✓	✓	—	✓	✓	—	✓	✓	✓	—	✓	—	✓	✓	✓	✓	—	✓	—	✓	✓	✓	✓	✓	✓
	EMSR1-18CRN1	✓	✓	✓	✓	✓	—	✓	—	—	—	✓	—	✓	✓	✓	✓	—	✓	—	✓	✓	✓	—	—	✓
	EMSR1-24CRN1	✓	—	—	—	—	✓	—	—	—	✓	—	—	✓	—	—	—	✓	—	✓	—	—	—	—	—	—
	EMSEI-09CRN1	—	—	—	—	—	✓	—	—	—	✓	—	—	—	—	—	—	✓	—	—	—	—	—	—	—	—
	EMSR1I-09HRDN1	✓	✓	✓	—	—	✓	✓	✓	✓	✓	✓	✓	✓	✓	✓	✓	✓	✓	✓	✓	✓	✓	✓	✓	✓
	EMSR1I-12HRDN1	—	—	—	—	—	✓	—	—	—	✓	—	—	✓	—	—	—	✓	—	✓	—	—	—	—	—	—
	EMSR1I-18HRDN1	—	—	—	—	—	✓	—	—	—	✓	—	—	✓	—	—	—	✓	—	✓	—	—	—	—	—	—
	EMTBI-12HRDN1	✓	✓	✓	—	—	✓	✓	✓	✓	✓	✓	✓	✓	✓	✓	✓	✓	✓	✓	✓	✓	✓	✓	✓	✓
WHIRLPOOL - R410		—	—	—	—	—	—	—	—	—	✓	—	—	—	—	—	—	—	—	—	—	—	—	—	—	—
Outdoor Unit 室外機	EMSR1-09CRN1	✓	✓	✓	—	—	—	✓	✓	✓	—	—	—	✓	✓	—	✓	—	✓	—	✓	✓	—	✓	✓	—
	EMSR1-12CRN1	✓	✓	—	✓	✓	—	✓	✓	✓	—	✓	—	✓	✓	✓	✓	✓	—	✓	—	✓	✓	✓	✓	✓
	EMSR1-18CRN1	✓	✓	✓	✓	✓	—	✓	—	—	—	✓	—	✓	✓	✓	✓	✓	—	✓	—	✓	✓	✓	—	✓
	EMSR1-24CRN1	✓	—	—	—	—	✓	—	—	—	✓	—	—	—	—	—	—	✓	—	✓	—	—	—	—	—	—
	EM2OC-18CRN1	—	—	—	—	—	✓	—	—	—	✓	—	—	—	—	—	—	✓	—	—	—	—	—	—	—	—
	EM2OC1-18HRDN1	✓	✓	✓	—	—	✓	✓	✓	✓	✓	✓	✓	✓	✓	✓	✓	✓	✓	✓	✓	✓	✓	✓	✓	✓
	EM3OC - 27HRDN1	—	—	—	—	—	✓	—	—	—	✓	—	✓	—	—	—	—	✓	—	✓	—	—	—	—	—	—
	WHIRLPOOL - SC009A/B		—	—	—	—	—	—	—	—	—	✓	—	—	—	—	—	—	—	—	—	—	—	—	—	—

Tower 座		1					2					3								5									
Floor 樓層		5/F-35/F					5/F-35/F					5/F-35/F								5/F-35/F									
Model No. 型號		Unit 單位		A	B	C	D	E	A	B	C	D	E	A	B	C	D	E	F	G	H	A	B	C	D	E	F	G	H
Indoor Unit 室內機	EMSR1-09CRN1	✓	✓	✓	✓	—	✓	✓	✓	✓	✓	✓	✓	✓	✓	✓	✓	—	✓	✓	✓	✓	✓	✓	✓	✓	✓	✓	✓
	EMSR1-12CRN1	✓	✓	✓	✓	—	✓	✓	✓	✓	✓	✓	✓	✓	✓	✓	✓	—	✓	✓	✓	✓	✓	✓	✓	✓	✓	✓	✓
	EMSR1-18CRN1	✓	—	✓	✓	✓	✓	—	—	—	✓	✓	—	—	✓	✓	✓	—	✓	✓	—	—	✓	—	—	—	—	—	✓
	EMSEI-09CRN1	✓	—	—	—	—	—	✓	✓	—	—	—	✓	✓	—	—	—	—	—	—	—	—	✓	✓	—	—	—	—	—
Outdoor Unit 室外機	EMSR1-09CRN1	✓	✓	✓	✓	—	✓	✓	✓	✓	✓	✓	✓	✓	✓	✓	✓	—	✓	✓	✓	✓	✓	✓	✓	✓	✓	✓	✓
	EMSR1-12CRN1	✓	✓	✓	✓	—	✓	✓	✓	✓	✓	✓	✓	✓	✓	✓	✓	—	✓	✓	✓	✓	✓	✓	✓	✓	✓	✓	✓
	EMSR1-18CRN1	✓	—	✓	✓	✓	✓	—	—	—	✓	✓	—	—	✓	✓	✓	—	✓	—	—	✓	—	—	✓	✓	—	—	✓
	EM2OC-18CRN1	✓	—	—	—	—	—	✓	✓	—	—	—	✓	✓	—	—	—	—	—	—	—	—	✓	✓	—	—	—	—	—

3樓住宅單位機電裝置數量說明

Schedule of Mechanical & Electrical Provisions of 3/F Residential Flats

TOWER 座			Tower 1 第一座	Tower 2 第二座			Tower 3 第三座			Tower 5 第五座		
UNIT 單位			A	A	B	C	A	B	C	A	B	C
Living room/Dining room 客/飯廳	TV/FM Outlet 電視/電台天線插座		2	2	2	2	3	2	2	2	2	2
	Telephone Outlet 電話插座		2	2	2	2	2	2	2	2	2	2
	13A Single Socket Outlet 單位插座		1			1	3		1	1		1
	13A Twin Socket Outlet 雙位插座		3	3	3	4	5	4	4	4	4	4
	Switch for A/C Unit 冷氣機開關制		2	1	1	2	2	2	2	2	2	2
	HA PAD 智能控制屏		1	1	1	1	1	1	1	1	1	1
Master Bedroom 主人房(3房單位)大睡房(2房單位)	TV/FM Outlet 電視/電台天線插座		1	1	1	1	2	1	1	1	1	1
	Telephone Outlet 電話插座		1	1	1	1	2	1	1	1	1	1
	13A Single Socket Outlet 單位插座					2						
	13A Twin Socket Outlet 雙位插座		2	2	2	2	5	2	2	2	2	2
	Switch for A/C Unit 冷氣機開關制		1	1	1	1	2	1	1	1	1	1
Other Bedroom 其他睡房	TV/FM Outlet 電視/電台天線插座		1			1	1	1	1	1	1	1
	Telephone Outlet 電話插座		1			1	1	1	1	1	1	1
	13A Single Socket Outlet 單位插座		1			1	1	1	1	1	1	1
	13A Twin Socket Outlet 雙位插座		1			1	2	1	1	1	1	1
Bedroom 2 睡房 2	Switch for A/C Unit 冷氣機開關制		1			1	1	1	1	1	1	1
	TV/FM Outlet 電視/電台天線插座						1					
	Telephone Outlet 電話插座						2					
	13A Single Socket Outlet 單位插座						2					
Bathroom in Master Bedroom 主人房之浴室	13A Twin Socket Outlet 雙位插座						2					
	Switch for A/C Unit 冷氣機開關制						1					
	13A Single Socket Outlet 單位插座											
	Fused Spur Unit 接線座 / Socket Outlet 插座											
Bathroom 浴室	(for Thermo Ventilator) 浴室換氣暖風機		1			1	1	1	1	1	1	1
	(for BTV) 電視		1			1	1	1	1	1	1	1
	13A Single Socket Outlet 單位插座		1	1	1	1	1	1	1	1	1	1
	Fused Spur Unit/Socket Outlet 接線座/插座		1	1	1	1	1	1	1	1	1	1
Kitchen 廚房	(for Gas Water Heater) 熱水爐		1									
	15A Single Socket Outlet 單位插座											
	(for Cobi-Microwave Oven) 微波焗爐		1	1	1	1	1	1	1	1	1	1
	(for Electric Grill) 電烤爐		1			1	1		1	1		1
	13A Twin Socket Outlet 雙位插座		3	2	2	3	3	2	3	3	2	3
	Switch for A/C Unit 冷氣機開關制		1			1	1	1	1	1	1	1
	Fused Spur Unit 接線座 / Socket Outlet 插座		1	1	1	1	1	1	1	1	1	1
	(for Exhaust Fan) 抽氣扇		1	1	1	1	1	1	1	1	1	1
	(for Gas Water Heater) 熱水爐		1	1	1	1	1	1	1	1	1	1
	(for Refrigerator) 雪櫃		1	1	1	1	1	1	1	1	1	1
	(for Washer/Dryer) 洗衣乾衣機		1	1	1	1	1	1	1	1	1	1
	(for Exhaust Hood) 抽油煙機		1	1	1	1	1	1	1	1	1	1
	(for Gas Cooker) 煤氣煮食爐		1	1	1	1	1	1	1	1	1	1
	(for KTV) 電視		1	1	1	1	1	1	1	1	1	1
	(for HA Panel) 智能家居面板		1	1	1	1	1	1	1	1	1	1
	(for Twin Gas Bruner) 雙頭煮食爐		1	1	1	1	1	1	1	1	1	1
Drain Point 去水位 Water Point 來水位	(for Washer Machine) 洗衣機		1	1	1	1	1	1	1	1	1	1
	(for Washer Machine) 洗衣機		1	1	1	1	1	1	1	1	1	1

## 裝置、裝修物料及設備 FITTINGS, FINISHES AND APPLIANCES

### 3樓住宅單位機電裝置數量說明

### Schedule of Mechanical & Electrical Provisions of 3/F Residential Flats

TOWER 座			Tower 1 第一座	Tower 2 第二座			Tower 3 第三座			Tower 5 第五座		
UNIT 單位			A	A	B	C	A	B	C	A	B	C
Store 儲物間	13A Twin Socket Outlet 雙位插座		1				1	1		1	1	
	Switch for A/C Unit 冷氣機開關制		1				1	1		1	1	

## 5樓-35樓住宅單位機電裝置數量說明

### Schedule of Mechanical & Electrical Provisions of 5/F-35/F Residential Flats

TOWER 座			Tower 1 第一座					Tower 2 第二座					Tower 3 第三座								Tower 5 第五座							
UNIT 單位			A	B	C	D	E	A	B	C	D	E	A	B	C	D	E	F	G	H	A	B	C	D	E	F	G	H
Living room/Dining room 客/飯廳	TV/FM Outlet 電視/電台天線插座		2	2	2	2	2	2	2	2	2	2	2	2	2	2	2	3	2	2	2	2	2	2	2	2	2	2
	Telephone Outlet 電話插座		2	2	2	2	3	2	2	2	2	2	2	2	2	2	2	3	2	2	2	2	2	2	2	2	2	2
	13A Single Socket Outlet 單位插座				1			1					1			1					1			1				
	13A Twin Socket Outlet 雙位插座		3	3	3	3	5	3	3	3	3	3	3	3	3	3	3	5	3	3	3	3	3	3	3	3	3	3
	Switch for A/C Unit 冷氣機開關制		1	1	1	1	1	1	1	1	1	1	1	1	1	1	1	1	1	1	1	1	1	1	1	1	1	1
	HA PAD 智能控制屏		1	1	1	1	1	1	1	1	1	1	1	1	1	1	1	1	1	1	1	1	1	1	1	1	1	1
Master Bedroom 主人房(3房單位)大睡房(2房單位)	TV/FM Outlet 電視/電台天線插座		1	1	1	1		1	1	1	1	1	1	1	1	1	1		1	1	1	1	1	1	1	1	1	1
	Telephone Outlet 電話插座		1	1	1	1		1	1	1	1	1	1	1	1	1	1		1	1	1	1	1	1	1	1	1	1
	13A Single Socket Outlet 單位插座																											
	13A Twin Socket Outlet 雙位插座		2	2	2	2		2	2	2	2	2	2	2	2	2	2		2	2	2	2	2	2	2	2	2	2
	Switch for A/C Unit 冷氣機開關制		1	1	1	1		1	1	1	1	1	1	1	1	1	1		1	1	1	1	1	1	1	1	1	1
Other Bedroom 其他睡房	TV/FM Outlet 電視/電台天線插座		1	1	1	1		1	1	1	1	1	1	1	1	1	1		1	1	1	1	1	1	1	1	1	1
	Telephone Outlet 電話插座		1	1	1	1		1	1	1	1	1	1	1	1	1	1		1	1	1	1	1	1	1	1	1	1
	13A Single Socket Outlet 單位插座		1	1	1	1		1	1	1	1	1	1	1	1	1	1		1	1	1	1	1	1	1	1	1	1
	13A Twin Socket Outlet 雙位插座		1	1	1	1		1	1	1	1	1	1	1	1	1	1		1	1	1	1	1	1	1	1	1	1
	Switch for A/C Unit 冷氣機開關制		1	1	1	1		1	1	1	1	1	1	1	1	1	1		1	1	1	1	1	1	1	1	1	1
Bathroom in Master Bedroom 主人房之浴室	13A Single Socket Outlet 單位插座		1		1			1					1			1					1			1				
	Fused Spur Unit 接線座	(for Exhaust Fan/Thermo Ventilator) 抽氣扇/浴室換氣暖風機	1		1			1					1			1					1			1				
Bathroom 浴室	13A Single Socket Outlet 單位插座		1	1	1	1	1	1	1	1	1	1	1	1	1	1	1	1	1	1	1	1	1	1	1	1	1	1
	Fused Spur Unit 接線座	(for Exhaust Fan/Thermo Ventilator) 抽氣扇/浴室換氣暖風機	1	1	1	1	1	1	1	1	1	1	1	1	1	1	1	1	1	1	1	1	1	1	1	1	1	1
Kitchen 廚房	13A Twin Socket Outlet 雙位插座		3	2	3	1	2	3	1	1	1	2	3	1	1	3	2	2	1	2	3	1	1	3	2	2	2	2
	Fused Spur Unit/Socket Outlet 接線座/插座	(for Exhaust Fan/Thermo Ventilator) 抽氣扇/浴室換氣暖風機	1	1	1	1	1	1	1	1	1	1	1	1	1	1	1	1	1	1	1	1	1	1	1	1	1	1
		(for Gas Water Heater) 熱水爐	1	1	1	1	1	1	1	1	1	1	1	1	1	1	1	1	1	1	1	1	1	1	1	1	1	1
		(for Gas Cooker) 煤氣煮食爐	1	1	1	1	1	1	1	1	1	1	1	1	1	1	1	1	1	1	1	1	1	1	1	1	1	1
		(for Exhaust Hood) 抽油煙機	1	1	1	1	1	1	1	1	1	1	1	1	1	1	1	1	1	1	1	1	1	1	1	1	1	1
		(for Microwave Oven) 微波爐	1	1	1	1	1	1	1	1	1	1	1	1	1	1	1	1	1	1	1	1	1	1	1	1	1	1
		(for Refrigerator) 雪櫃	1	1	1	1	1	1	1	1	1	1	1	1	1	1	1	1	1	1	1	1	1	1	1	1	1	1
		(for Washer Machine) 洗衣機	1	1	1	1	1	1	1	1	1	1	1	1	1	1	1	1	1	1	1	1	1	1	1	1	1	1
		(for HA Panel) 智能家居面板	1	1	1	1	1	1	1	1	1	1	1	1	1	1	1	1	1	1	1	1	1	1	1	1	1	1
		Drain Point 去水位	(for Washer Machine) 洗衣機	1	1	1	1	1	1	1	1	1	1	1	1	1	1	1	1	1	1	1	1	1	1	1	1	1
Store 儲物間	Water Point 來水位	(for Washer Machine) 洗衣機	1	1	1	1	1	1	1	1	1	1	1	1	1	1	1	1	1	1	1	1	1	1	1	1	1	1
	13A Twin Socket Outlet 雙位插座		1						1	1				1	1							1	1					
	Switch for A/C Unit 冷氣機開關制		1						1	1				1	1							1	1					

### 36樓住宅單位機電裝置數量說明

## Schedule of Mechanical & Electrical Provisions of 36/F Residential Flats

TOWER 座			Tower 1 第一座		Tower 2 第二座			Tower 3 第三座					Tower 5 第五座						
UNIT 單位			A	B	A	B	C	A	B	C	D	E	A	B	C	D	E	F	
Living room/Dining room 客/飯廳	TV/FM Outlet 電視/電台天線插座		2	2	2	2	2	3	3	2	3	2	3	3	2	2	2	2	
	Telephone Outlet 電話插座		2	2	2	2	2	3	3	2	3	2	3	3	2	2	2	2	
	13A Single Socket Outlet 單位插座		1		1	1													
	13A Twin Socket Outlet 雙位插座		3	3	3	3	3	4	4	3	3	3	4	4	3	3	3	3	
	Switch for A/C Unit 冷氣機開關制		2	2	2	2	1	2	2	1	2	1	2	2	1	1	1	1	
	HA PAD 智能控制屏		1	1	1	1	1	1	1	1	1	1	1	1	1	1	1	1	
Master Bedroom 主人房(3房單位)大睡房(2房單位)	TV/FM Outlet 電視/電台天線插座		1	1	1	1	1	1	1	1	1	1	1	1	1	1	1	1	
	Telephone Outlet 電話插座		1	1	1	1	1	1	1	1	1	1	1	1	1	1	1	1	
	13A Single Socket Outlet 單位插座																		
	13A Twin Socket Outlet 雙位插座		2	2	2	2	2	2	2	2	2	2	2	2	2	2	2	2	
	Switch for A/C Unit 冷氣機開關制		1	1	1	1	1	1	1	1	1	1	1	1	1	1	1	1	
	TV/FM Outlet 電視/電台天線插座		1	1	1	1	1	1	1	1	1	1	1	1	1	1	1	1	
Other Bedroom 其他睡房	Telephone Outlet 電話插座		1	1	1	1	1	1	1	1	1	1	1	1	1	1	1	1	
	13A Single Socket Outlet 單位插座		1	1	1	1	1	1	1	1	1	1	1	1	1	1	1	1	
	13A Twin Socket Outlet 雙位插座		1	1	1	1	1	1	1	1	1	1	1	1	1	1	1	1	
	Switch for A/C Unit 冷氣機開關制		1	1	1	1	1	1	1	1	1	1	1	1	1	1	1	1	
	13A Single Socket Outlet 單位插座		1	1	1	1		1	1		1		1	1					
	Fused Spur Unit/Socket Outlet 接線座/插座	(for Thermo Ventilator) 浴室換氣暖風機 (for Gas Water Heater) 熱水爐 (for BTV) 電視	1	1	1	1		1	1		1		1	1					
Bathroom 浴室	13A Single Socket Outlet 單位插座		1	1	1	1	1	1	1	1	1	1	1	1	1	1	1	1	
	Fused Spur Unit 接線座	(for Thermo Ventilator) 浴室換氣暖風機	1	1	1	1	1	1	1	1	1	1	1	1	1	1	1	1	
	15A Single Socket Outlet 單位插座																		
Kitchen 廚房		(for Cobi-Microwave Oven) 微波焗爐 (for Electric Grill) 電烤爐	1	1	1	1	1	1	1	1	1	1	1	1	1	1	1	1	
			1	1	1			1	1		1		1	1					
	13A Twin Socket Outlet 雙位插座		3	3	3	2	2	3	3	2	2	2	3	3	2	2	2	2	
	Switch for A/C Unit 冷氣機開關制		1	1	1	1	1	1	1	1	1	1	1	1	1	1	1	1	
	Fused Spur Unit/Socket Outlet 接線座/插座	(for Exhaust Fan) 抽氣扇 (for Gas Water Heater) 熱水爐 (for Refrigerator) 雪櫃	1	1	1	1	1	1	1	1	1	1	1	1	1	1	1	1	
			2	2	2	1	1	1	1	1	2	1	1	1	1	1	1	1	
			1	1	1	1	1	1	1	1	1	1	1	1	1	1	1	1	
		(for Washer/Dryer) 洗衣乾衣機 (for Exhaust Hood) 抽油煙機	1	1	1	1	1	1	1	1	1	1	1	1	1	1	1	1	
			1	1	1	1	1	1	1	1	1	1	1	1	1	1	1	1	
		(for Gas Cooker) 煤氣煮食爐 (for KTV) 電視	1	1	1	1	1	1	1	1	1	1	1	1	1	1	1	1	
			1	1	1	1	1	1	1	1	1	1	1	1	1	1	1	1	
		(for HA Panel) 智能家居面板 (for Twin Gas Bruner) 雙頭煮食爐	1	1	1	1	1	1	1	1	1	1	1	1	1	1	1	1	
			1	1	1	1	1	1	1	1	1	1	1	1	1	1	1	1	
		Drain Point 去水位 Water Point 來水位	(for Washer Machine) 洗衣機 (for Washer Machine) 洗衣機	1	1	1	1	1	1	1	1	1	1	1	1	1	1	1	1
	Store 儲物間	13A Twin Socket Outlet 雙位插座		1	1	1			1	1		1		1	1				
		Switch for A/C Unit 冷氣機開關制		1	1	1			1	1		1		1	1				