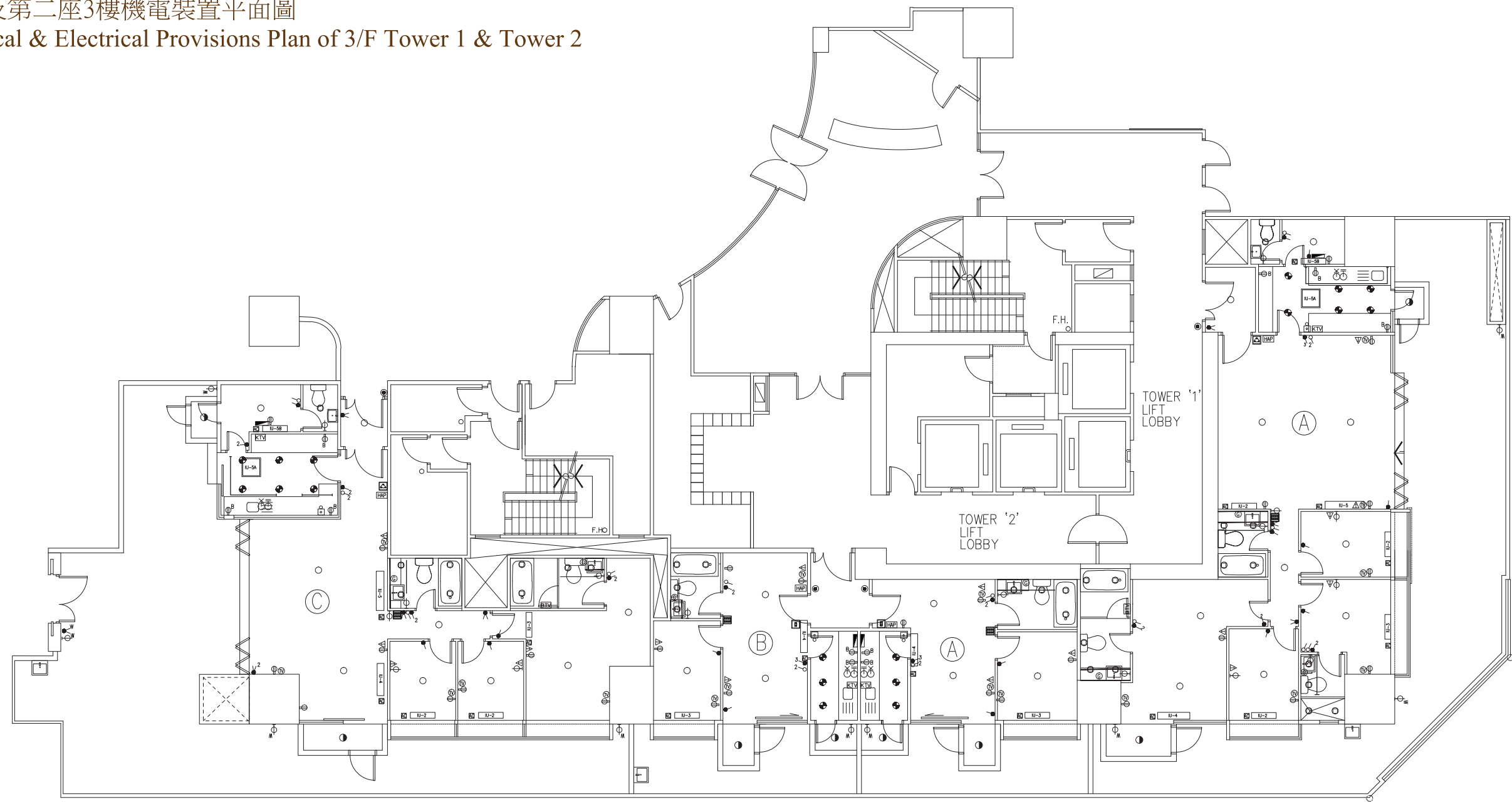
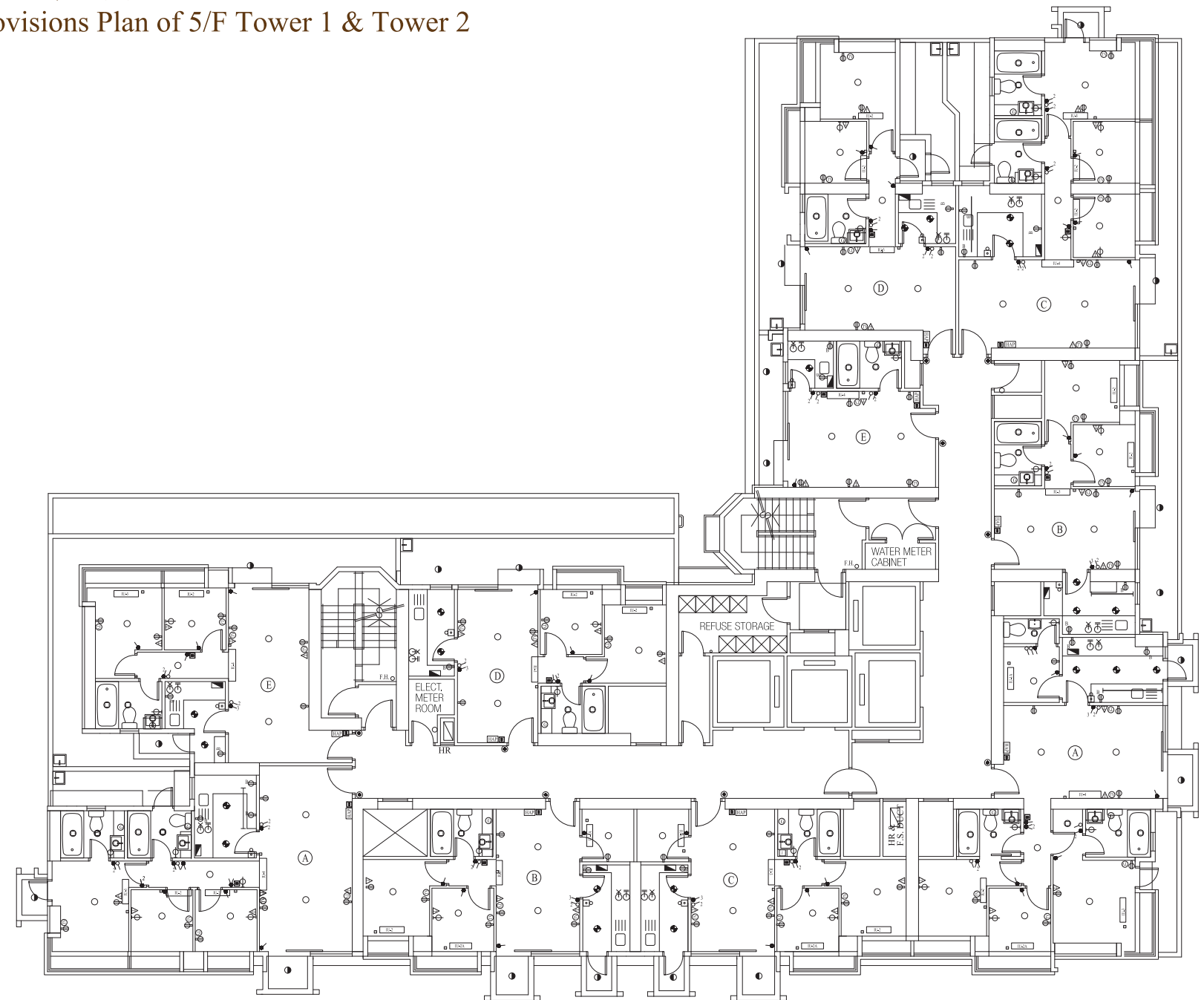


裝置、裝修物料及設備
FITTINGS, FINISHES AND APPLIANCES

第一座及第二座3樓機電裝置平面圖
Mechanical & Electrical Provisions Plan of 3/F Tower 1 & Tower 2

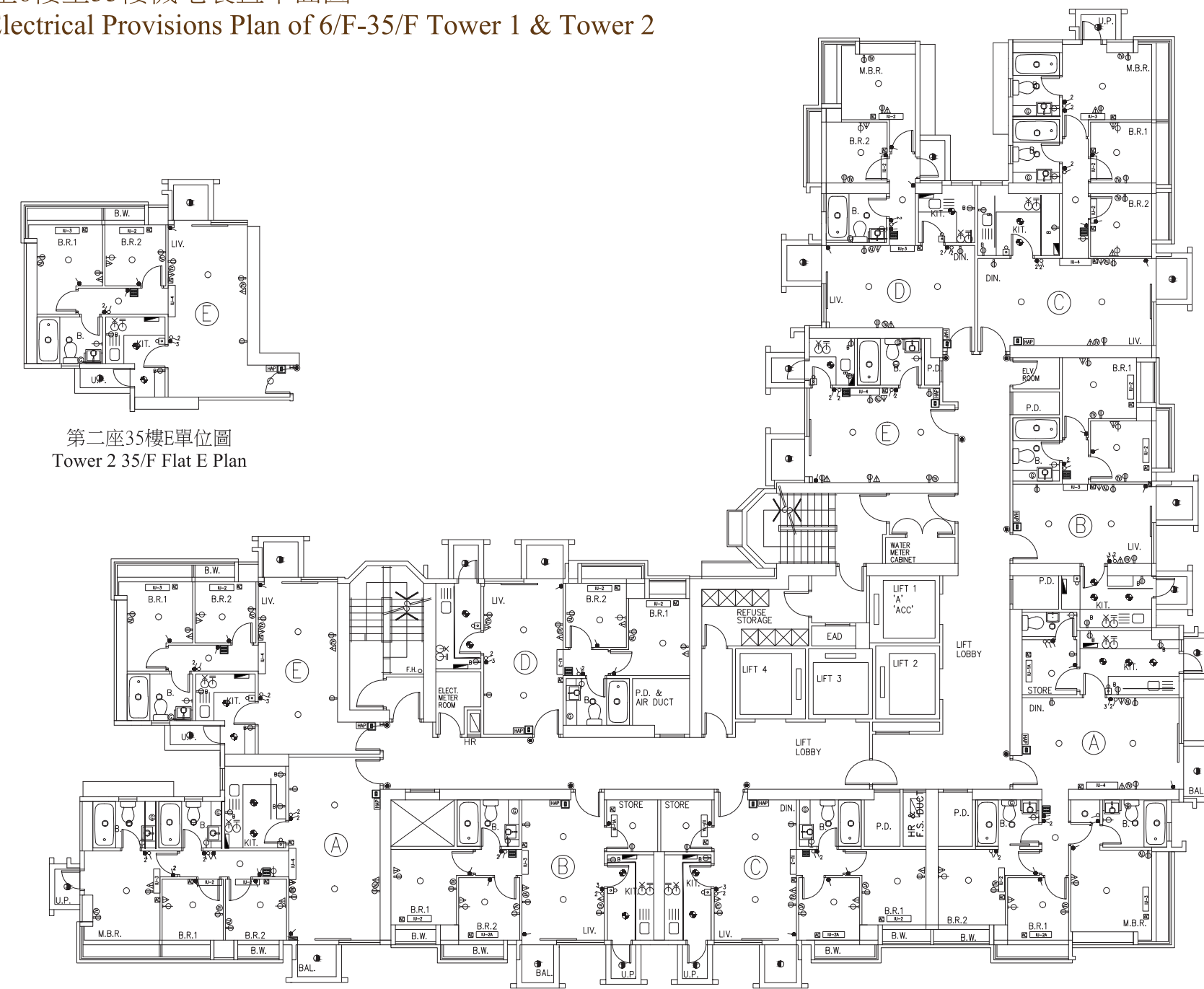


第一座及第二座5樓機電裝置平面圖
Mechanical & Electrical Provisions Plan of 5/F Tower 1 & Tower 2

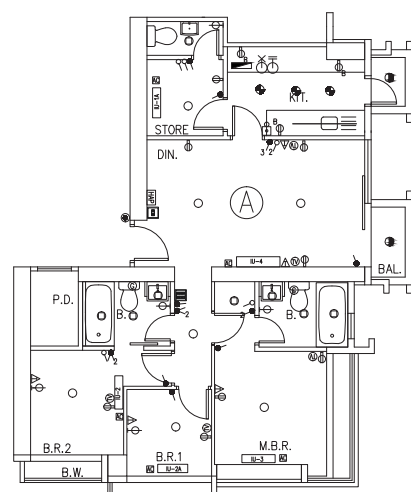


裝置、裝修物料及設備
FITTINGS, FINISHES AND APPLIANCES

第一座及第二座6樓至35樓機電裝置平面圖
Mechanical & Electrical Provisions Plan of 6/F-35/F Tower 1 & Tower 2

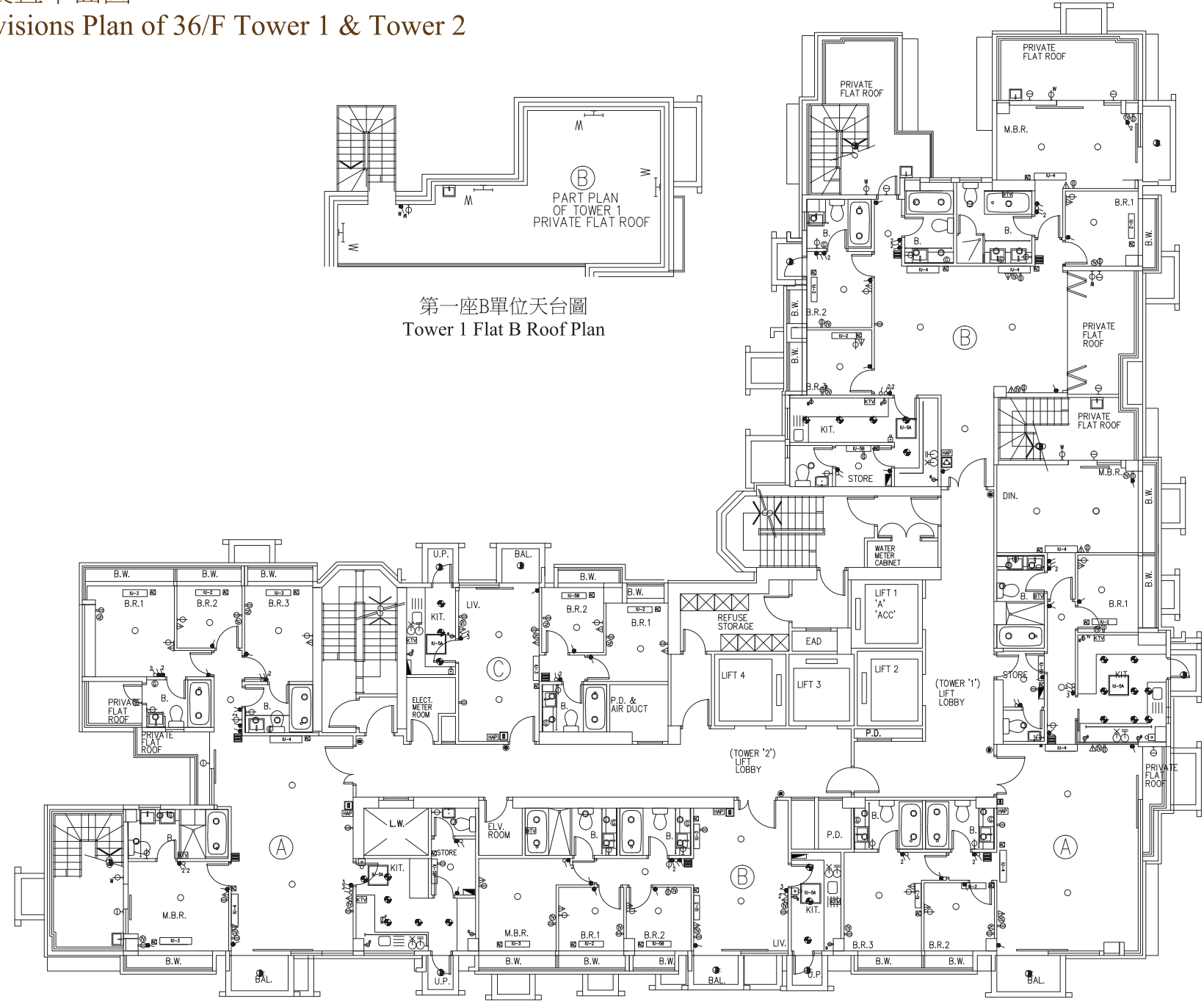


第二座35樓E單位圖
Tower 2 35/F Flat E Plan

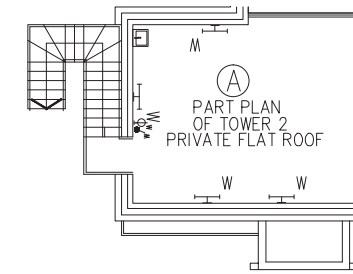


第一座35樓A單位圖
Tower 1 35/F Flat A Plan

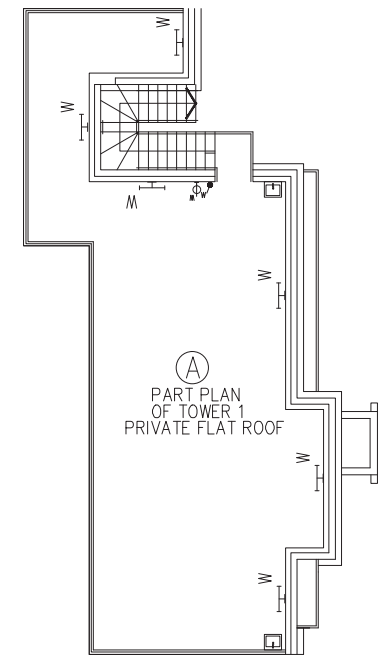
第一座及第二座36樓機電裝置平面圖
Mechanical & Electrical Provisions Plan of 36/F Tower 1 & Tower 2



第一座B單位天台圖
Tower 1 Flat B Roof Plan



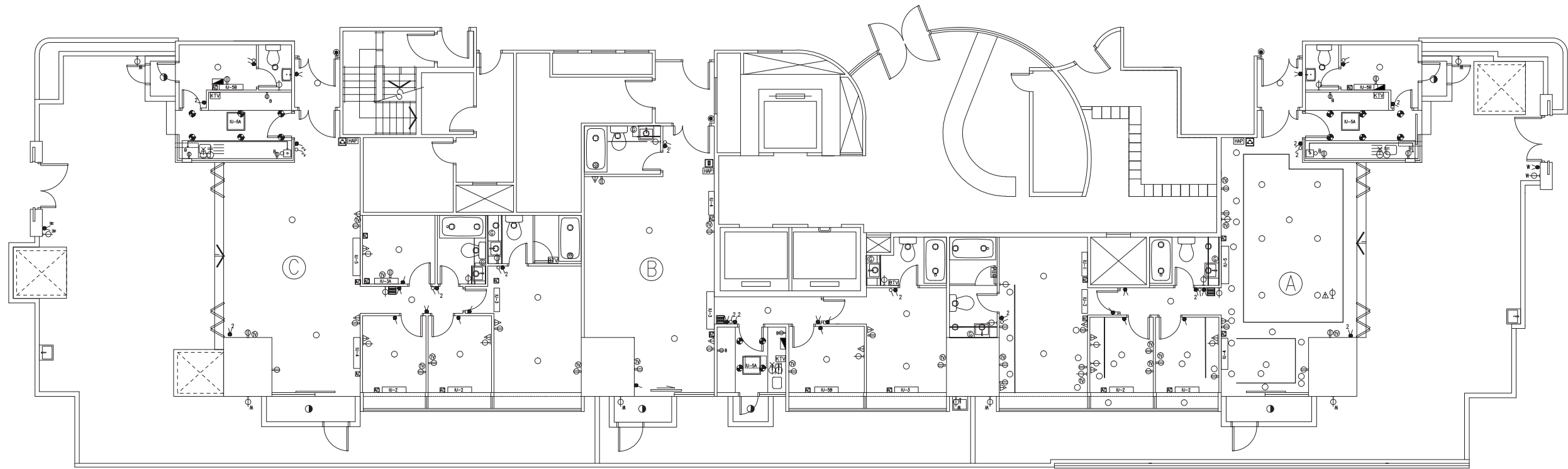
第二座A單位天台圖
Tower 2 Flat A Roof Plan



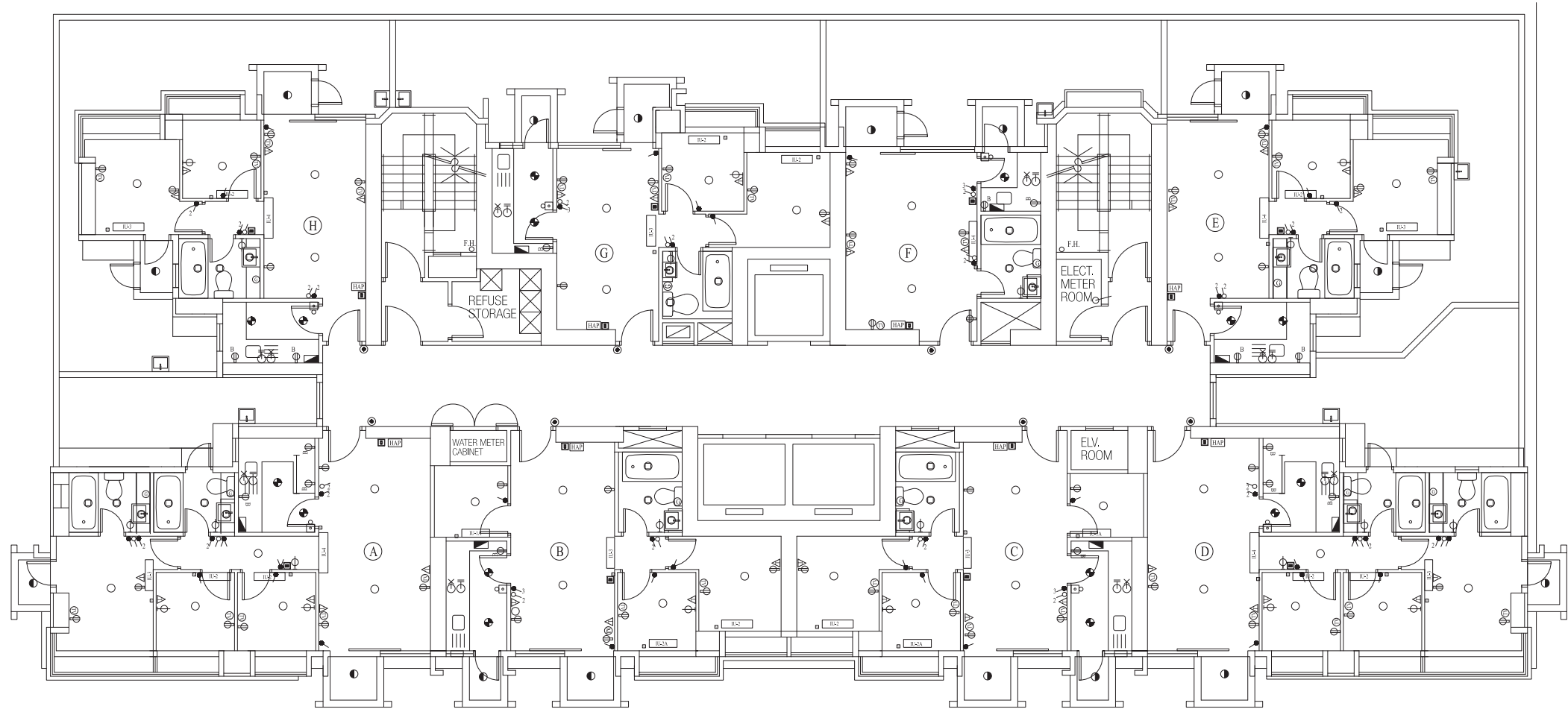
第一座A單位天台圖
Tower 1 Flat A Roof Plan

裝置、裝修物料及設備
FITTINGS, FINISHES AND APPLIANCES

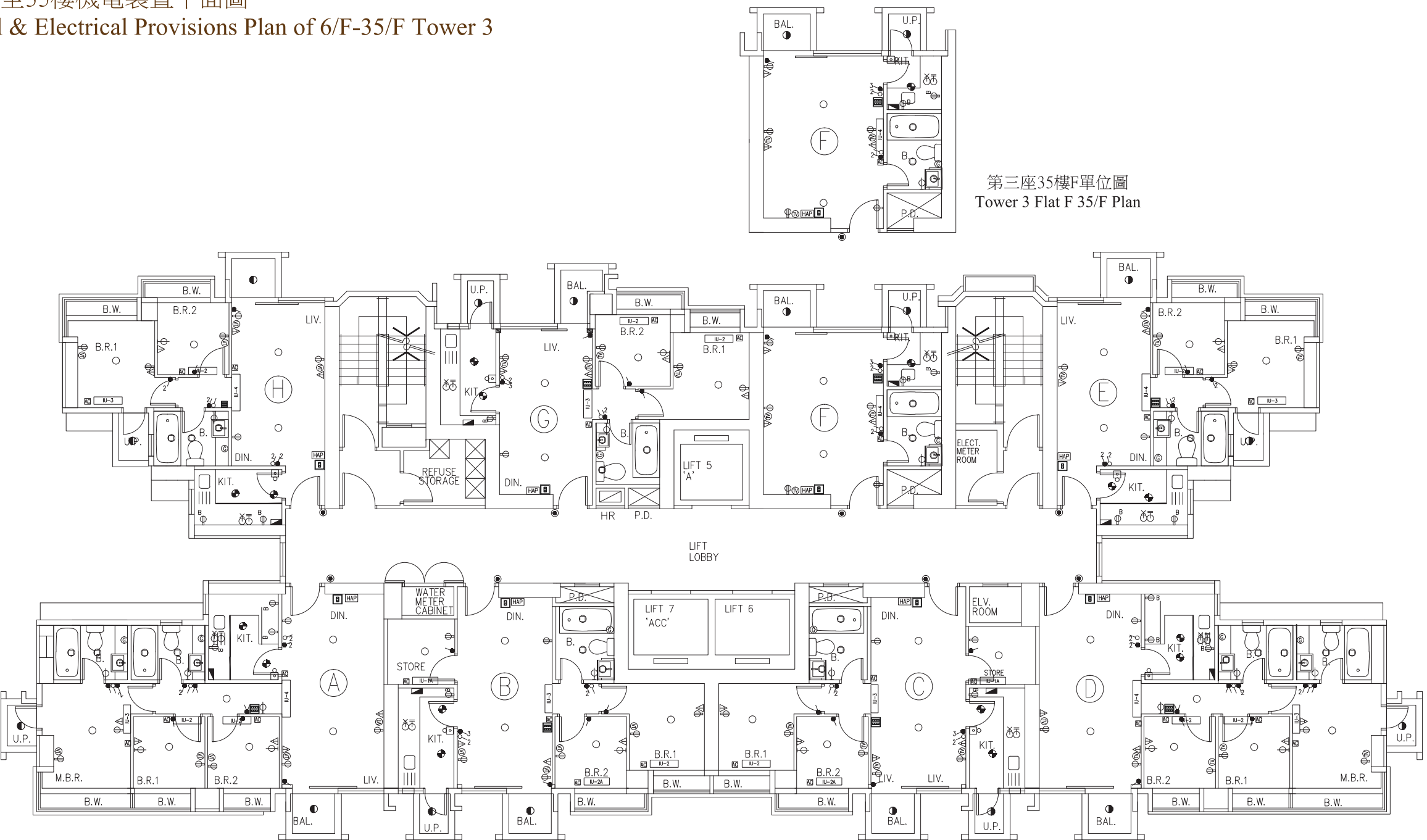
第三座3樓機電裝置平面圖
Mechanical & Electrical Provisions Plan of 3/F Tower 3



第三座5樓機電裝置平面圖
Mechanical & Electrical Provisions Plan of 5/F Tower 3

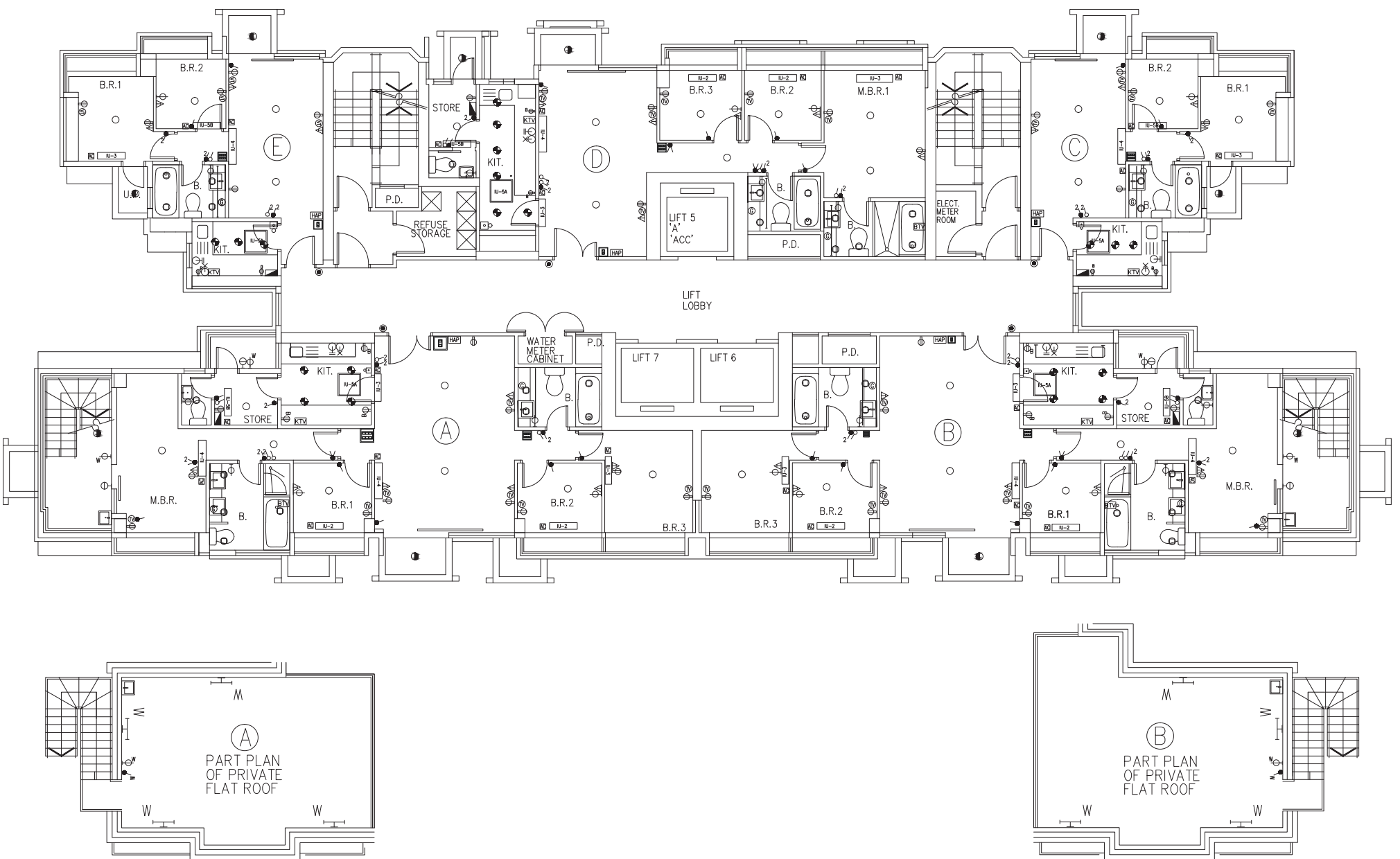


第三座6樓至35樓機電裝置平面圖
Mechanical & Electrical Provisions Plan of 6/F-35/F Tower 3



第三座35樓F單位圖
Tower 3 Flat F 35/F Plan

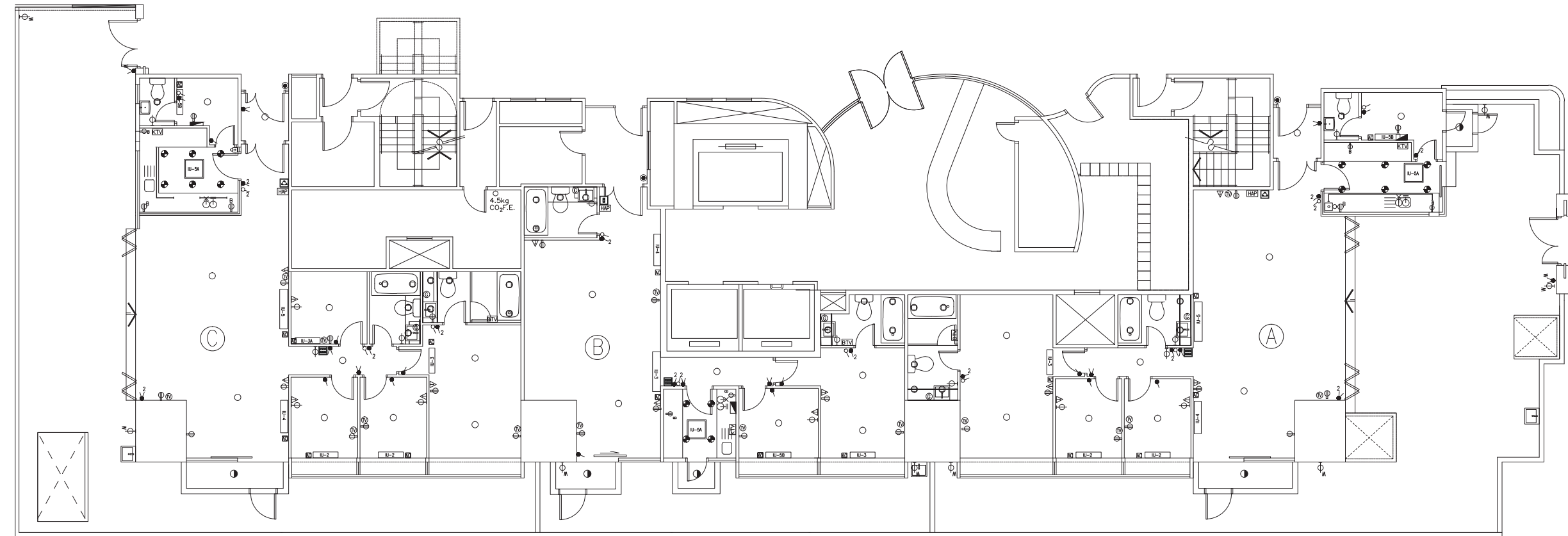
第三座36樓機電裝置平面圖
Mechanical & Electrical Provisions Plan of 36/F Tower 3



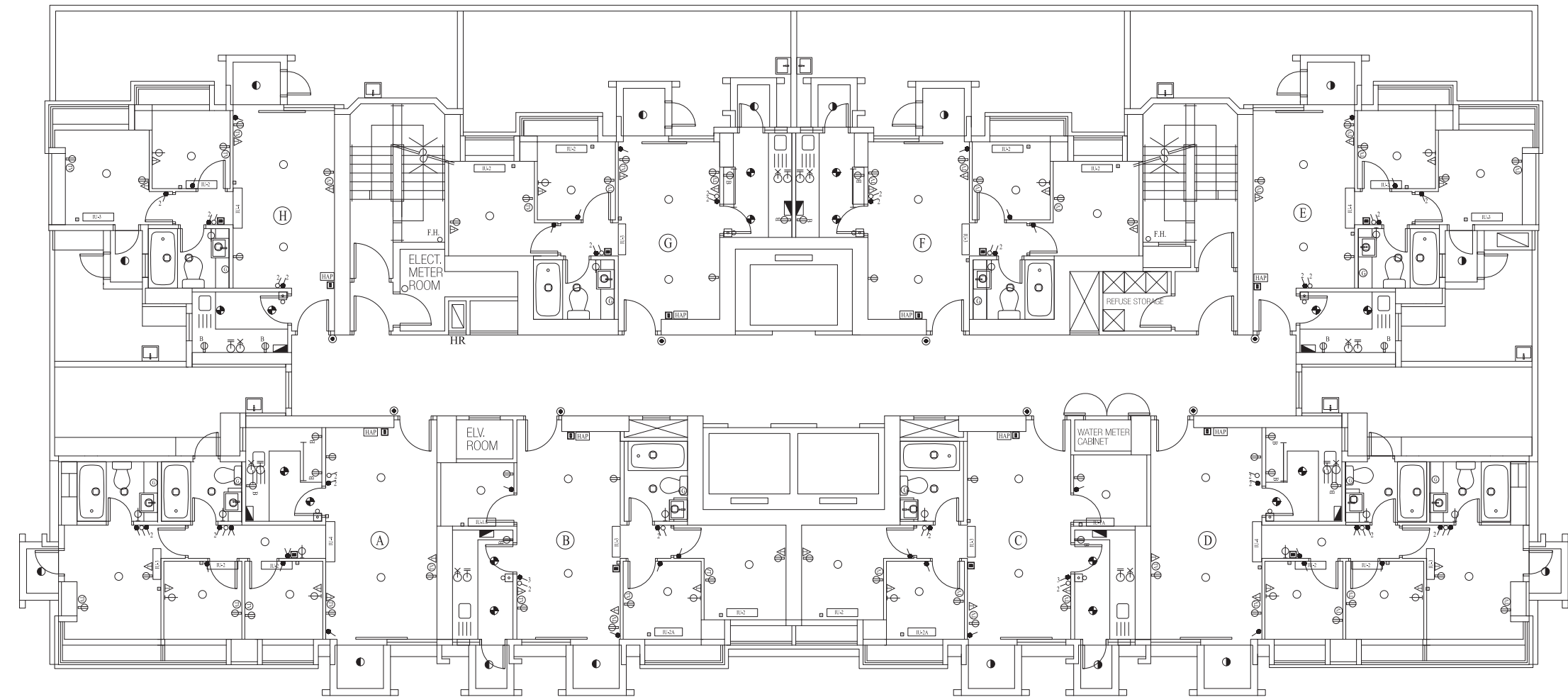
第三座A單位天台圖
Tower 3 Flat A Roof Plan

第三座B單位天台圖
Tower 3 Flat B Roof Plan

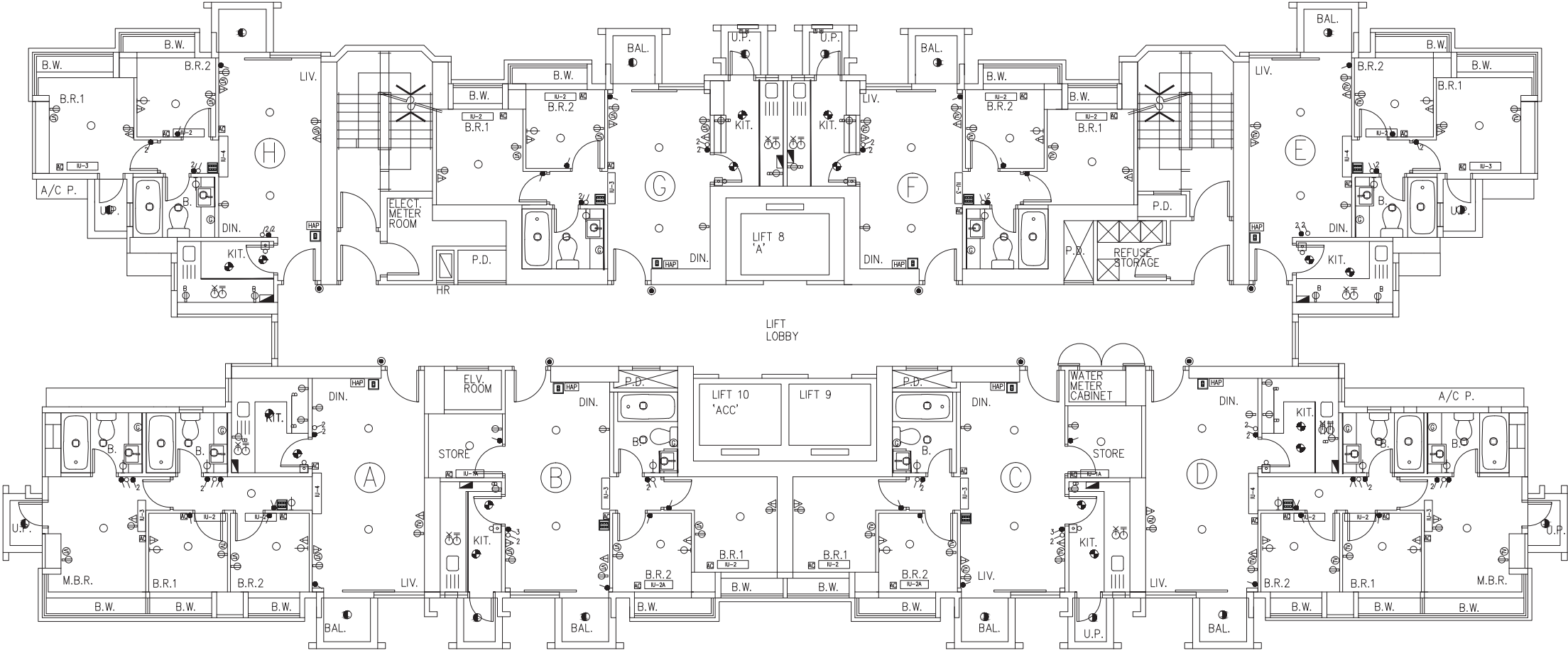
第五座3樓機電裝置平面圖
Mechanical & Electrical Provisions Plan of 3/F Tower 5



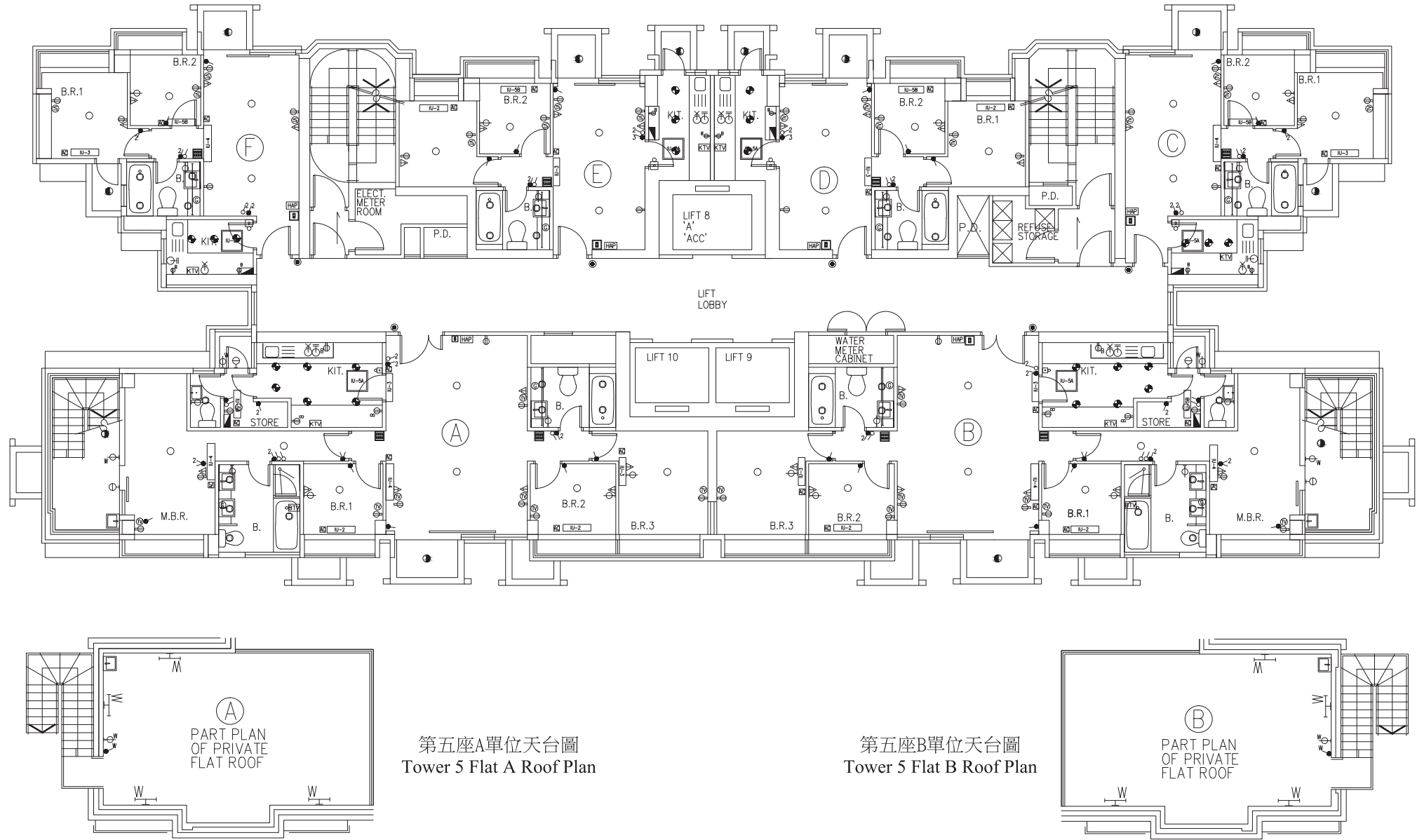
第五座5樓機電裝置平面圖
Mechanical & Electrical Provisions Plan of 5/F Tower 5



第五座6樓至35樓機電裝置平面圖
Mechanical & Electrical Provisions Plan of 6/F-35/F Tower 5



第五座36樓機電裝置平面圖
Mechanical & Electrical Provisions Plan of 36/F Tower 5




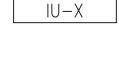
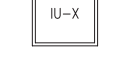








裝置、裝修物料及設備

FITTINGS, FINISHES AND APPLIANCES


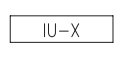







各座3樓機電裝置說明圖例 Legend of E & M Provisions of 3/F of each Tower

	10A 1 WAY 1 GANG LIGHTING SWITCH 一位一掣燈掣		MCB BOARD 總電掣箱
	10A 1 WAY 2 GANG LIGHTING SWITCH 一位二掣燈掣		D.P. SWITCH WITH PILOT LIGHT FOR A/C UNITS 有掣雙極開關掣供冷氣
	10A 1 WAY 3 GANG LIGHTING SWITCH 一位三掣燈掣		GAS WATER HEATER CONTROLLER 煤氣溫度掣
	10A 2 WAY 1 GANG LIGHTING SWITCH 二位燈掣		TV/FM OUTLET 電視/電台天線插座
	10A 2 WAY 2 GANG LIGHTING SWITCH 二位二掣燈掣		KITCHEN T.V. 廚房電視
	10A 2 WAY 3 GANG LIGHTING SWITCH 二位三掣燈掣		BATHROOM T.V. 浴室電視
	20A 1 WAY 1 GANG D.P. SWITCH 一掣雙極開關掣		TELEPHONE OUTLET 電話插座
	20A 1 WAY 2 GANG D.P. SWITCH 二掣雙極開關掣		ELECTRIC DOOR BELL 門鈴
	10A 1 WAY WEATHERPROOF LIGHTING SWITCH 一位防水燈掣		DOOR BELL PUSH BUTTON 門鈴按鈕
	10A 2 WAY WEATHERPROOF LIGHTING SWITCH 二位防水燈掣		HOME AUTOMATION TOUCH SCREEN PAD WITH DOORPHONE FUNCTION 智能控制屏
	13A SOCKET OUTLET 單位掣插座		SCREW TYPE LAMP HOLDER C/W 100W GLS LAMP 螺栓式燈座
	13A WATERPROOF SOCKET OUTLET 防水單位掣插座		DOWNLIGHT TYPE 1 筒燈
	13A TWIN SOCKET OUTLET 雙位掣插座		DOWNLIGHT TYPE 2 筒燈
	13A TWIN SOCKET OUTLET AT BENCH TOP LEVEL 雙位掣插座高於桌面		DOWNLIGHT TYPE 3 筒燈

	LIGHT TROUGH WITH ELECTRONIC BALLAST AND T5 FLUO. TUBE T5光管槽
	BURIAL UPLIGHT 暗藏式發光二極管地燈
	WALL RECESSED LIGHT 暗藏式牆燈
	INDOOR A/C UNIT 室內冷氣機
	DUCT TYPE A/C UNIT 室內風管式冷氣機
	DRAIN POINT FOR WASHING MACHINE 洗衣機去水位
	WATER POINT FOR WASHING MACHINE 洗衣機來水位
	1 GANG LIGHT SWITCH (HA) 一掣無線控制冷氣掣
	2 GANG LIGHTING SWITCH (HA) 二掣智能燈掣
	3 GANG LIGHTING SWITCH (HA) 三掣智能燈掣
	6 GANG LIGHTING CONTROL SWITCH (HA) 燈光場景掣

各座5樓至35樓機電裝置說明圖例 Legend of E & M Provisions of 5/F-35/F of each Tower

	10A 1 WAY 1 GANG LIGHTING SWITCH 一位一掣燈掣		MCB BOARD 總電掣箱
	10A 1 WAY 2 GANG LIGHTING SWITCH 一位二掣燈掣		D.P. SWITCH WITH PILOT LIGHT FOR A/C UNITS 有掣雙極開關掣供冷氣
	10A 1 WAY 3 GANG LIGHTING SWITCH 一位三掣燈掣		GAS WATER HEATER CONTROLLER 煤氣溫度掣
	10A 2 WAY 1 GANG LIGHTING SWITCH 二位燈掣		TV/FM OUTLET 電視/電台天線插座
	10A 2 WAY 2 GANG LIGHTING SWITCH 二位二掣燈掣		KITCHEN T.V. 廚房電視
	10A 2 WAY 3 GANG LIGHTING SWITCH 二位三掣燈掣		BATHROOM T.V. 浴室電視
	20A 1 WAY 1 GANG D.P. SWITCH 一掣雙極開關掣		TELEPHONE OUTLET 電話插座
	20A 1 WAY 2 GANG D.P. SWITCH 二掣雙極開關掣		ELECTRIC DOOR BELL 門鈴
	10A 1 WAY WEATHERPROOF LIGHTING SWITCH 一位防水燈掣		DOOR BELL PUSH BUTTON 門鈴按鈕
	10A 2 WAY WEATHERPROOF LIGHTING SWITCH 二位防水燈掣		HOME AUTOMATION TOUCH SCREEN PAD WITH DOORPHONE FUNCTION 智能控制屏
	13A SOCKET OUTLET 單位掣插座		SCREW TYPE LAMP HOLDER C/W 100W GLS LAMP 螺栓式燈座
	13A WATERPROOF SOCKET OUTLET 防水單位掣插座		DOWNLIGHT TYPE 1 筒燈
	13A TWIN SOCKET OUTLET 雙位掣插座		DOWNLIGHT TYPE 2 筒燈
	13A TWIN SOCKET OUTLET AT BENCH TOP LEVEL 雙位掣插座高於桌面		DOWNLIGHT TYPE 3 筒燈

	LIGHT TROUGH WITH ELECTRONIC BALLAST AND T5 FLUO. TUBE T5光管槽
	INDOOR A/C UNIT 室內冷氣機
	DUCT TYPE A/C UNIT 室內風管式冷氣機
	DRAIN POINT FOR WASHING MACHINE 洗衣機去水位
	WATER POINT FOR WASHING MACHINE 洗衣機來水位
	1 GANG LIGHT SWITCH (HA) 一掣無線控制冷氣掣
	2 GANG LIGHTING SWITCH (HA) 二掣智能燈掣
	3 GANG LIGHTING SWITCH (HA) 三掣智能燈掣
	6 GANG LIGHTING CONTROL SWITCH (HA) 燈光場景掣

裝置、裝修物料及設備

FITTINGS, FINISHES AND APPLIANCES

各座36樓機電裝置說明圖例 Legend of E & M Provisions of 36/F of each Tower

	10A 1 WAY 1 GANG LIGHTING SWITCH 一位一掣燈掣		MCB BOARD 總電掣箱
	10A 1 WAY 2 GANG LIGHTING SWITCH 一位二掣燈掣		D.P. SWITCH WITH PILOT LIGHT FOR A/C UNITS 有掣雙極開關掣供冷氣
	10A 1 WAY 3 GANG LIGHTING SWITCH 一位三掣燈掣		GAS WATER HEATER CONTROLLER 煤氣溫度掣
	10A 2 WAY 1 GANG LIGHTING SWITCH 二位燈掣		TV/FM OUTLET 電視/電台天線插座
	10A 2 WAY 2 GANG LIGHTING SWITCH 二位二掣燈掣		KITCHEN T.V. 廚房電視
	10A 2 WAY 3 GANG LIGHTING SWITCH 二位三掣燈掣		BATHROOM T.V. 浴室電視
	20A 1 WAY 1 GANG D.P. SWITCH 一掣雙極開關掣		TELEPHONE OUTLET 電話插座
	20A 1 WAY 2 GANG D.P. SWITCH 二掣雙極開關掣		ELECTRIC DOOR BELL 門鈴
	10A 1 WAY WEATHERPROOF LIGHTING SWITCH 一位防水燈掣		DOOR BELL PUSH BUTTON 門鈴按鈕
	10A 2 WAY WEATHERPROOF LIGHTING SWITCH 二位防水燈掣		HOME AUTOMATION TOUCH SCREEN PAD WITH DOORPHONE FUNCTION 智能控制屏
	13A SOCKET OUTLET 單位掣插座		SCREW TYPE LAMP HOLDER C/W 100W GLS LAMP 螺栓式燈座
	13A WATERPROOF SOCKET OUTLET 防水單位掣插座		DOWNLIGHT TYPE 1 筒燈
	13A TWIN SOCKET OUTLET 雙位掣插座		DOWNLIGHT TYPE 2 筒燈
	13A TWIN SOCKET OUTLET AT BENCH TOP LEVEL 雙位掣插座高於桌面		DOWNLIGHT TYPE 3 筒燈

	WALL MOUNTED LIGHTING POINT 牆身燈位
	600mm WEATHERPROOF SINGLE BATTEN FLUO. LIGHT 600mm T5 防水支架
	LIGHT TROUGH WITH ELECTRONIC BALLAST AND T5 FLUO. TUBE T5光管槽
	INDOOR A/C UNIT 室內冷氣機
	DUCT TYPE A/C UNIT 室內風管式冷氣機
	DRAIN POINT FOR WASHING MACHINE 洗衣機去水位
	WATER POINT FOR WASHING MACHINE 洗衣機來水位
	1 GANG LIGHT SWITCH (HA) 一掣無線控制冷氣掣
	2 GANG LIGHTING SWITCH (HA) 二掣智能燈掣
	3 GANG LIGHTING SWITCH (HA) 三掣智能燈掣
	6 GANG LIGHTING CONTROL SWITCH (HA) 燈光場景掣

服務協議

SERVICE AGREEMENTS

食水及沖廁水由水務署供應
電力由中華電力有限公司供應
煤氣由香港中華煤氣有限公司供應

Potable and flushing water is supplied by Water Supplies Department.
Electricity is supplied by CLP Power Hong Kong Limited.
Towngas is supplied by The Hong Kong and China Gas Company Limited.

地稅

GOVERNMENT RENT

賣方(擁有人)有法律責任繳付住宅物業的地稅直至住宅物業買賣完成日(包括該日)為止。

The vendor (the owner) is liable for the Government rent of a residential property up to and including the date of completion of the sale and purchase of that residential property.

買方的雜項付款

MISCELLANEOUS PAYMENTS BY PURCHASER

- 在向買方交付住宅物業在空置情況下的管有權時，買方須向賣方(擁有人)補還水、電力及氣體的按金。
- 在交付時，買方不須向賣方(擁有人)支付清理廢料的費用。

附註：買方須向管理人而不須向賣方(擁有人)繳付水、電力及氣體的按金及清理廢料的費用。

- On the delivery of the vacant possession of the residential property to the purchaser, the purchaser is liable to reimburse the vendor (the owner) for the deposits for water, electricity and gas.
- On that delivery, the purchaser is not liable to pay to the vendor (the owner) a debris removal fee.

Note : The purchaser should pay to the manager instead of the vendor (the owner) the deposits for water, electricity and gas and the debris removal fee.

欠妥之處的保養責任期

DEFECT LIABILITY WARRANTY PERIOD

按買賣合約的規定，凡售出物業或於買賣合約列出裝設於物業內的裝置、裝修物料或設備有欠妥之處，而該欠妥之處非由買方行為或疏忽造成，則賣方在接獲買方在買賣成交日期後的6個月內送達的書面通知後，須於合理地切實可行的範圍內，盡快自費作出補救。

As provided in the agreement for sale and purchase, the vendor shall, at its own cost and as soon as reasonably practicable after receipt of a written notice served by the purchaser within 6 months after the date of completion of the sale and purchase, remedy any defects to the property sold, or the fittings, finishes or appliances incorporated into the property as set out in the agreement for sale and purchase, caused otherwise than by the act or neglect of the purchaser.

斜坡維修

MAINTENANCE OF SLOPES

不適用

Not applicable

修訂

MODIFICATION

不適用

Not applicable

申請建築物總樓面面積寬免的資料

INFORMATION IN APPLICATION FOR CONCESSION ON GROSS FLOOR AREA OF BUILDING

獲寬免總樓面面積的設施分項

- 於印製售樓說明書前呈交予並已獲建築事務監督批准的建築圖則上有關總樓面面積寬免的分項的最新資料，請見下表。如印製售樓說明書時尚未呈交最終修訂圖則予建築事務監督，則有(＃)號的資料可以由認可人士提供的資料作為基礎。直至最終修訂圖則於發出入伙紙前呈交予並獲建築事務監督批准前，以下分項資料仍可能有所修改。

		面積 (平方米)
根據《建築物(規劃)規例》第23(3)(b)條不計算的總樓面面積		
1. (＃)	停車場及上落客貨地方（公共交通總站除外）	11916.716
2.	機房及相類設施	
2.1	所佔面積受相關《認可人士、註冊結構工程師及註冊岩土工程師作業備考》或規例限制的強制性設施或必要機房，例如升降機機房、電訊及廣播設備室、垃圾及物料回收房等	868.883
2.2(＃)	所佔面積不受任何《認可人士、註冊結構工程師及註冊岩土工程師作業備考》或規例限制的強制性設施或必要機房，例如僅供消防裝置及設備佔用的房間、電錶房、電力變壓房、食水及鹹水缸等	3748.303
2.3	非強制性或非必要機房，例如空調機房、風櫃房等	648.862
根據聯合作業備考第1及第2號提供的環保設施		
3.	露台	1456.881
4.	加闊的公用走廊及升降機大堂	1561.316
5.	公用空中花園	—
6.	隔聲鰭	—
7.	翼牆、捕風器及風斗	—
8.	非結構預製外牆	1184.509
	無形模板	126.315
9.	工作平台	1079.051
10.	隔音屏障	—

		面積 (平方米)
適意設施		
11.	供保安人員和管理處員工使用的櫃枱、辦公室、儲物室、警衛室和廁所、業主立案法團辦公室	72.799
12. (＃)	住宅康樂設施，包括僅供康樂設施使用的中空、機房、游泳池的濾水器機房、有蓋人行道等	1914.901
	空間 (康樂設施)	43.212
13.	有上蓋的園景區及遊樂場	375.559
14.	橫向屏障／有蓋人行道、花棚	120.565
15.	擴大升降機井道	521.290
16.	煙囪管道	—
17.	其他非強制性或非必要機房，例如鍋爐房、衛星電視共用天線房	—
18.(＃)	強制性設施或必要機房所需的管槽、氣槽	—
19.	非強制性設施或非必要機房所需的管槽、氣槽	745.550
20.	環保系統及設施所需的機房、管槽及氣槽	—
21.	複式住宅單位及洋房的中空	—
22.(＃)	伸出物，如空調機箱及伸出外牆超過750毫米的平台	—
	設有郵箱的郵件派遞室	36.4

申請建築物總樓面面積寬免的資料

INFORMATION IN APPLICATION FOR CONCESSION ON GROSS FLOOR AREA OF BUILDING

		面積 (平方米)
其他項目		
23.(#)	底護層，包括底護層兼空中花園	—
24.(#)	其他伸出物	—
25.	公共交通總站	—
26.(#)	共用構築物及樓梯	—
27.(#)	僅供獲接納不計入總樓面面積的樓層使用的樓梯、升降機槽及垂直管道的水平面積	—
28.(#)	公眾通道	95.076
29.(#)	因建築物後移導致的覆蓋面積	—
	空間 (商場)	558.505
	游泳池的濾水機房	171.465
額外總樓面面積		
30.	額外總樓面面積	—

註：上述表格是根據屋宇署所發出的《認可人士、註冊結構工程師及註冊岩土工程師作業備考》ADM-2規定的要求而制訂的。屋宇署會按實際需要不時更改有關要求。

本發展項目的經批准一般建築圖則不受由建築事務監督發出的《認可人士、註冊結構工程師及註冊岩土工程師作業備考》APP-151規定規限。本發展項目的環境評估及公用部分的預計能量表現或消耗的資料無須呈交建築事務監督，以作為批予總樓面面積寬免的先決條件。

Breakdown of GFA Concessions Obtained for All Features

- Latest information on breakdown of GFA concessions as shown on the general building plans submitted to and approved by the Building Authority (BA) prior to the printing of the sales brochure is tabulated below. Information marked (#) may be based on information provided by the authorized person if the sales brochure is printed prior to submission of the final amendment plans to the BA. The breakdown of GFA concessions may be subject to further changes until final amendment plans are submitted to and approved by the BA prior to the issuance of the occupation permit for the development.

		Area (m²)
Disregarded GFA under Building (Planning) Regulations 23(3)(b)		
1. (#)	Carpark and loading/unloading area excluding public transport terminus	11916.716
2.	Plant rooms and similar services	
2.1	Mandatory feature or essential plant room, area of which is limited by respective Practice Notes for Authorized Persons, Registered Structural Engineers and Registered Geotechnical Engineers (PNAP) or regulation such as lift machine room, telecommunications and broadcasting (TBE) room, refuse storage and material recovery chamber, etc.	868.883
2.2 (#)	Mandatory feature or essential plant room, area of which is NOT limited by any PNAP or regulation such as room occupied solely by fire services installations (FSI) and equipment, meter room, transformer room, potable and flushing water tank, etc.	3748.303
2.3	Non-mandatory or non-essential plant room such as air-conditioning plant room, air handling unit (AHU) room, etc.	648.862
Green Features under Joint Practice Notes 1 and 2		
3.	Balcony	1456.881
4.	Wider common corridor and lift lobby	1561.316
5.	Communal sky garden	NIL
6.	Acoustic fin	NIL
7.	Wing wall, wind catcher and funnel	NIL
8.	Non-structural prefabricated external wall	1184.509
	Lost form	126.315
9.	Utility platform	1079.051
10.	Noise barrier	NIL

		Area (m²)
Amenity Features		
11.	Counter, office, store, guard room and lavatory for watchman and management staff, Owners' Corporation Office	72.799
12. (#)	Residential Recreational facilities including void, plant room, swimming pool filtration plant room, covered walkway etc serving solely the recreational facilities	1914.901
	Void (recreational facilities)	43.212
13.	Covered landscaped and play area	375.559
14.	Horizontal screens/covered walkways, trellis	120.565
15.	Larger lift shaft	521.290
16.	Chimney shaft	NIL
17.	Other non-mandatory or non-essential plant room, such as boiler room, satellite master antenna television (SMATV) room	NIL
18. (#)	Pipe duct, air duct for mandatory feature or essential plant room	NIL
19.	Pipe duct, air duct for non-mandatory or non-essential plant room	745.550
20.	Plant room, pipe duct, air duct for environmentally friendly system and feature	NIL
21.	Void in duplex domestic flat and house	NIL
22. (#)	Projections such as air-conditioning box and platform with a projection of more than 750 mm from the external wall	NIL
	Mail delivery room with mail boxes	36.4

		Area (m²)
Other Exempted Items		
23. (#)	Refuge floor including refuge floor cum sky garden	NIL
24. (#)	Other projections	NIL
25.	Public transport terminus	NIL
26. (#)	Party structure and common staircase	NIL
27. (#)	Horizontal area of staircase, lift shaft and vertical duct solely serving floor accepted as not being accountable for GFA.	NIL
28. (#)	Public passage	95.076
29. (#)	Covered set back area	NIL
	Void (shopping arcades)	558.505
	Swimming pool filtration plant room	171.465
Bonus GFA		
30.	Bonus GFA	NIL

Note : The above table is based on the requirements as stipulated in the Practice Note for Authorized Persons, Registered Structural Engineers and Registered Geotechnical Engineers ADM-2 issued by the Buildings Department. The Buildings Department may revise such requirements from time to time as appropriate.

The approved general building plans of this development are not subject to the requirements stipulated in the Practice Note for Authorized Persons, Registered Structural Engineers and Registered Geotechnical Engineers APP-151 issued by the Building Authority. Environmental assessment and information on the estimated energy performance or consumption for the common parts of this development were not required to be submitted to the Building Authority as a prerequisite for the granting of gross floor area concessions.

賣方就該項目指定的互聯網網站的網址
The address of the website designated by the vendor for the development:
www.greencode.com.hk

1. 發展項目及其周邊地區日後可能出現改變。
2. 本售樓說明書印製日期：二零一三年四月二十日。

1. There may be future changes to the development and the surrounding areas.
2. Date of printing of this Sales Brochure: 20th April 2013.

檢視 / 修改日期 Examination / Revision Date	所作修改 Revision Made	
	頁次 Page Number	所作修改 Revision Made
2013年4月28日 28 April 2013	10	修改發展項目的所在位置圖。 Revise location plan of the development.
	15–20, 22–28, 30–36	修改住宅物業的樓面平面圖上每個物業的外部及內部尺寸。 Revise external and internal dimensions of each residential property on the floor plans of residential properties in the development.
	94 – 102	刪除附註。 Note is deleted.
2013年7月26日 26 July 2013	6	增補有關認可機構的備註。 Note regarding the authorized institution is added.
	8	增補有關幕牆及其有關會所之部分的資料。 Information of curtain walls and those relating to the clubhouse is added.
	9 & 106	修訂中文「經理人」為「管理人」。 Replace the Chinese characters “經理人” by “管理人”.
	10	更新位置圖版本。 The location plan is replaced by a more updated revision.
	11	更新鳥瞰照片版本。 The aerial photo is replaced by a more updated revision.
	12 & 13	修訂圖例的字體大小。 Revise the font size of notation.
	14	更新發展項目的布局圖及補充該等建築物及設施的落成日期。 Update the layout plan of the development and add the estimated date of completion of those buildings and facilities.
	15 – 37	修改住宅物業的樓面平面圖上的外部及內部尺寸。 Revise external and internal dimensions of the floor plans of residential properties.
	80	修訂有蓋住客會所的資料。 Revise the information on the covered residents’ clubhouse.
	82 – 102	修訂裝置、裝修物料及設備之內容，並加入第90-1, 第94-1, 第97-1及第100-1頁。 Revise the provisions under Fittings, Finishes and Appliances and insert pages 90-1, 94-1, 97-1 & 100-1.
	10	更新位置圖版本。 The location plan is replaced by a more updated version.
	11	更新鳥瞰照片版本。 The aerial photo is replaced by a more updated version.
2013年10月25日 25 October 2013	12	更新分區計劃大綱圖版本。 The outline zoning plan is replaced by a more updated version.
	14	更新發展項目的布局圖的資料。 Revise the information on the layout plan of the development.
	16–18, 20, 21 , 24–26, 29, 36, 37	修改住宅物業的樓面平面圖的資料。 Revise the information on floor plans of residential properties.
	82, 83, 86, 87, 94–102	修訂裝置、裝修物料及設備之內容。 Revise the provisions under fittings, finishes and appliances.

檢視 / 修改日期 Examination / Revision Date	所作修改 Revision Made	
	頁次 Page Number	所作修改 Revision Made
2014年1月24日 24 January 2014	10	修改發展項目的所在位置圖。 Revise the location plan of the development.
	12, 12-1, 13-1	修改分區計劃大綱圖版本，並加入第12-1頁及第13-1頁。 The outline zoning plan is replaced by a more updated version and insert page 12-1 & page 13-1.
	14	更新發展項目的布局圖的資料。 Revise the information on the layout plan of the development.
	15, 16, 21, 22, 23, 28, 30, 31, 37, 38	修改住宅物業的樓面平面圖的資料，並加入平面圖之圖例及備註。 Revise the information on floor plans of residential properties and insert legends and notes for the floor plans.
	49, 50, 52	修改發展項目中的停車位的樓面平面圖的資料。 Revise the information on the floor plans of parking spaces in the development.
	70	修改地下及1樓平面圖的資料。 Revise information on the ground floor plan and first floor plan.
	77, 78, 79	修改立面圖的資料。 Revise the information on the elevation plan.
	80	修改發展項目中的公用設施的資料。 Revise the information on common facilities in the development.
	82, 83, 86, 87, 88	修訂裝置、裝修物料及設備之內容。 Revise the provisions under fittings, finishes and appliances.
	94, 94-1, 97, 97-1, 99, 100, 100-1	修改機電裝置平面圖的資料。 Revise the information on mechanical & electrical provisions plan.
2014年4月23日 23 April 2014	7 - 8	修訂文字。 Revise wording.
	10	更新發展項目的所在位置圖版本。 The location plan of the development is replaced by a more updated version.
	11	更新鳥瞰照片版本。 The aerial photograph is replaced by a more updated version.
	12 - 13	修訂文字。 Revise wording.
	15 - 20, 22 - 28, 30 - 36	修改住宅物業的樓面平面圖上的外部及內部尺寸。 Revise external and internal dimensions of the floor plans of residential properties.
	49, 50, 52	修改發展項目的停車位的樓面平面圖的資料。 Revise the information on the floor plans of parking spaces in the development.
	70	修改地下及1樓平面圖的資料。 Revise information on the ground floor plan and first floor plan.
	77, 78, 79	修改立面圖的資料。 Revise the information on the elevation plans.
	82, 83, 86 - 88, 90-1	修訂裝置、裝修物料及設備之內容。 Revise the provisions under fittings, finishes and appliances.
	94	修改機電裝置平面圖的資料。 Revise the information on mechanical & electrical provisions plans.
	106, 107	修訂文字。 Revise wording.

檢視 / 修改日期 Examination / Revision Date	所作修改 Revision Made	
	頁次 Page Number	所作修改 Revision Made
2014年7月22日 22 July 2014	1 - 4	按一手住宅物業銷售監管局最新之一手住宅物業買家須知版本更新。 Update the notes to purchasers of first-hand residential properties as per the latest version issued by the Sales of First-hand Residential Properties Authority.
	10	更新發展項目的所在位置圖。 Update the location plan of the development.
	11-1	增加鳥瞰照片。 Add the aerial photograph.
	13	修訂「備註」中的文字。 Revise wording to the “Note”.
	14	更新發展項目的佈局圖及修訂文字。 Update the layout plan of the development and revise wording.
	16 - 20, 22, 28, 30, 36, 38	修改住宅物業的樓面平面圖的資料。 Revise information on the floor plans of residential properties.
	85, 90	修訂裝置、裝修物料及設備之內容。 Revise the provisions under fittings, finishes and appliances.
	94 - 100, 102	修改機電裝置平面圖的資料。 Revise the information on mechanical & electrical provisions plans.
2014年9月24日 24 September 2014	5	修訂有關“預計關鍵日期”的資料。 Revise the information of the estimated material date.
2014年12月23日 23 December 2014	05	刪除有關“預計關鍵日期”的資料 Delete the information of the estimated material date.
	08	修訂發展項目的設計的資料 Revise the information on design of the development.
	09	修訂物業管理的資料中的內容 Revise the information on property management.
	10	更新發展項目的所在位置圖 Update the location plan of the development.
	53	修訂臨時買賣合約的摘要 Revise the summary of preliminary agreement for sale and purchase.
	81	修訂閱覽圖則及公契中的內容 Revise the information of inspection of plans and deed of mutual covenant.
	83, 87	修訂「裝置、裝修物料及設備」電力裝置及供水的內容 Revise the information of the electrical installations and the water supply in the Fittings, Finishes and Appliances.
	99	修改機電裝置平面圖的資料 Revise the information on mechanical & electrical provisions plan.
	106	修訂地稅及買方的雜項付款的內容 Revise the information of government rent and miscellaneous payments by purchaser.
	111	修訂本頁部分之內容 Revise part of the information on this page.

檢視 / 修改日期 Examination / Revision Date	所作修改 Revision Made	
	頁次 Page Number	所作修改 Revision Made
2015年3月20日 20 March 2015	06	增補賣方及有參與發展項目的其他人的資料。 Add a note for the Information on vendor and others involved in the development.
	11	更新鳥瞰照片版本。 The aerial photograph is replaced by a more updated version.
2015年6月17日 17 June 2015	10	更新位置圖版本。 The location plan is replaced by a more updated version.
	11-1	更新鳥瞰照片版本。 The aerial photograph is replaced by a more updated version.
	11-2 – 11-3	增加鳥瞰照片。 Add the aerial photograph.
	13	更新分區計劃大綱圖版本。 The outline zoning plan is replaced by a more updated version.
2015年9月16日 16 September 2015	10	更新發展項目的所在位置圖。 Update the location plan of the development.
	11	更新鳥瞰照片版本。 The aerial photograph is replaced by a more updated version.
	11-1 – 11-3	剔除發展項目鳥瞰照片。 Delete the aerial photographs of the development.
	12, 12-1	更新分區計劃大綱圖版本。 The outline zoning plan is replaced by a more updated version.
2015年12月15日 15 December 2015	10	更新發展項目的所在位置圖。 Update the location plan of the development.
	11-1	新增鳥瞰照片。 Add the aerial photograph.
	22	修改住宅物業的樓面平面圖的資料。 Revise information on the floor plans of residential properties.
	82, 85, 86, 90 - 92, 97	修訂裝置、裝修物料及設備之內容。 Revise the provisions under fittings, finishes and appliances.
2016年3月14日 14 March 2016	10	更新發展項目的所在位置圖。 Update the location plan of the development.
	11-1	更新鳥瞰照片版本。 The aerial photograph is replaced by a more updated version.
	11-2 – 11-4	新增鳥瞰照片。 Add the aerial photographs.
	12 – 13	更新分區計劃大綱圖版本。 The outline zoning plan is replaced by a more updated version.
2016年6月13日 13 June 2016	10	更新位置圖版本及版權特許編號。 Update the version of location plan and copyright licence number.
2016年9月9日 9 September 2016	10	更新發展項目的所在位置圖。 Update the location plan of the development.

檢視 / 修改日期 Examination / Revision Date	所作修改 Revision Made	
	頁次 Page Number	所作修改 Revision Made
2016年12月7日 7 December 2016	10	更新發展項目的所在位置圖。 Update the location plan of the development.
2017年3月3日 3 March 2017	12	更新分區計劃大綱圖版本。 The outline zoning plan is replaced by a more updated version.
2017年6月1日 1 June 2017	10	更新發展項目的所在位置圖。 Update the location plan of the development.
	11—11-4	更新鳥瞰照片版本。 The aerial photograph is replaced by a more updated version.
2017年8月30日 30 August 2017	1—4, 4-1, 4-2	更新並改用一手住宅物業買家須知於2017年8月1日發出之最新版本。 Update with the latest version of the notes to purchasers of first-hand residential properties dated 1st August 2017.
	10	更新發展項目的所在位置圖。 Update the location plan of the development.
	11, 11- 1	更新鳥瞰照片版本。 The aerial photograph is replaced by a more updated version.

此版乃特意留白 This page is deliberately left in blank