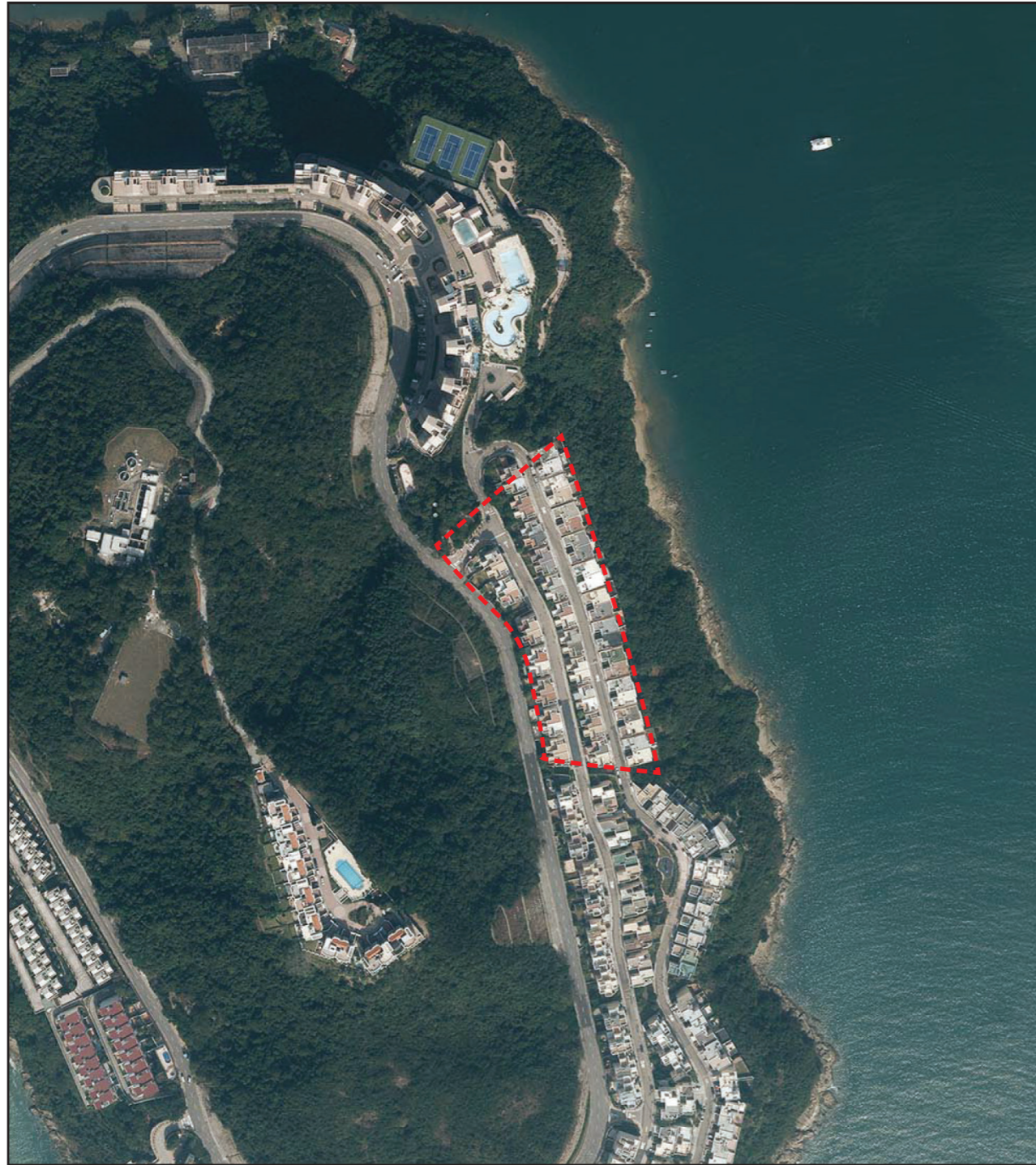



期數的鳥瞰照片

AERIAL PHOTOGRAPH OF THE PHASE



 期數所在位置
Location of the Phase

資料來源：

摘錄自地政總署測繪處於2017年1月25日在6,000呎飛行高度拍攝之鳥瞰照片，編號為E013843C。

Source of information:

Adopted from part of the aerial photo taken by the Survey and Mapping Office of the Lands Department at a flying height of 6,000 feet, photo No. E013843C, dated 25th January 2017 .

香港特別行政區政府地政總署測繪處©版權所有，未經許可，不得複製。
Survey and Mapping Office, Lands Department, The Government of HKSAR
© Copyright reserved - reproduction by permission only.

備註:

因技術原因(例如期數之不規則形狀)，鳥瞰照片所顯示之範圍多於《一手住宅物業銷售條例》所要求。

Remark:

Due to technical reasons (such as the irregular shape of the Phase), the aerial photograph shows more than the area required under the Residential Properties (First-hand Sales) Ordinance.