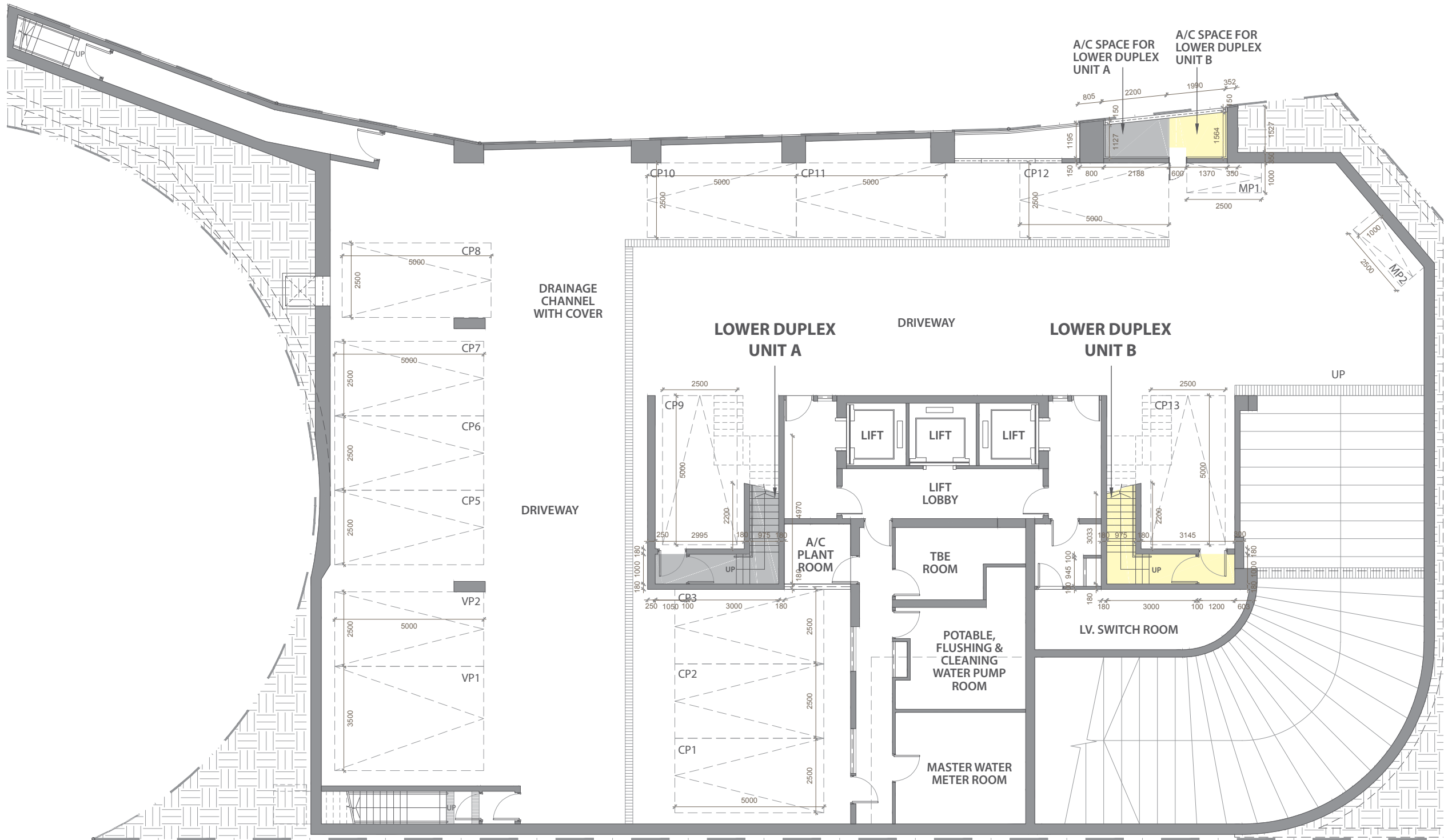


FLOOR PLANS OF RESIDENTIAL PROPERTIES IN THE DEVELOPMENT
發展項目的住宅物業的樓面平面圖



B/F Floor Plan
地庫平面圖

Scale 比例尺

0 10 M/米



FLOOR PLANS OF RESIDENTIAL PROPERTIES IN THE DEVELOPMENT

發展項目的住宅物業的樓面平面圖

Legend 圖例

A/C PLANT ROOM = Air-conditioning Plant Room = 冷氣機房

A/C SPACE FOR LOWER DUPLEX UNIT A/B = Air-conditioning Space for Lower Duplex Unit A/B = 供底層複式單位 A/B擺放冷氣機的空間

DRAINAGE CHANNEL WITH COVER = 有蓋排水渠

DRIVEWAY = 車道

LIFT = 升降機

LIFT LOBBY = 升降機大堂

LOWER DUPLEX UNIT A/B = 底層複式單位 A/B

LV. SWITCH ROOM = Low Voltage Switch Room = 低壓電掣室

MASTER WATER METER ROOM = 總水錶房

POTABLE, FLUSHING & CLEANING WATER PUMP ROOM = 飲用、沖廁及清潔用水泵房

TBE ROOM = Telecommunication Broadcast Equipment Room = 電訊及廣播設備機房

UP = 上

The thickness of the floor slabs (excluding plaster) of each residential property is 950 mm.
The floor-to-floor height of each residential property is 4.45 m*.

每個住宅物業的樓板（不包括灰泥）的厚度為950毫米。

每個住宅物業的層與層之間的高度為4.45米*。

* Floor-to-floor height refers to the height between the top surface of the structural slab of a floor and the top surface of the structural slab of its immediate upper floor.

Note

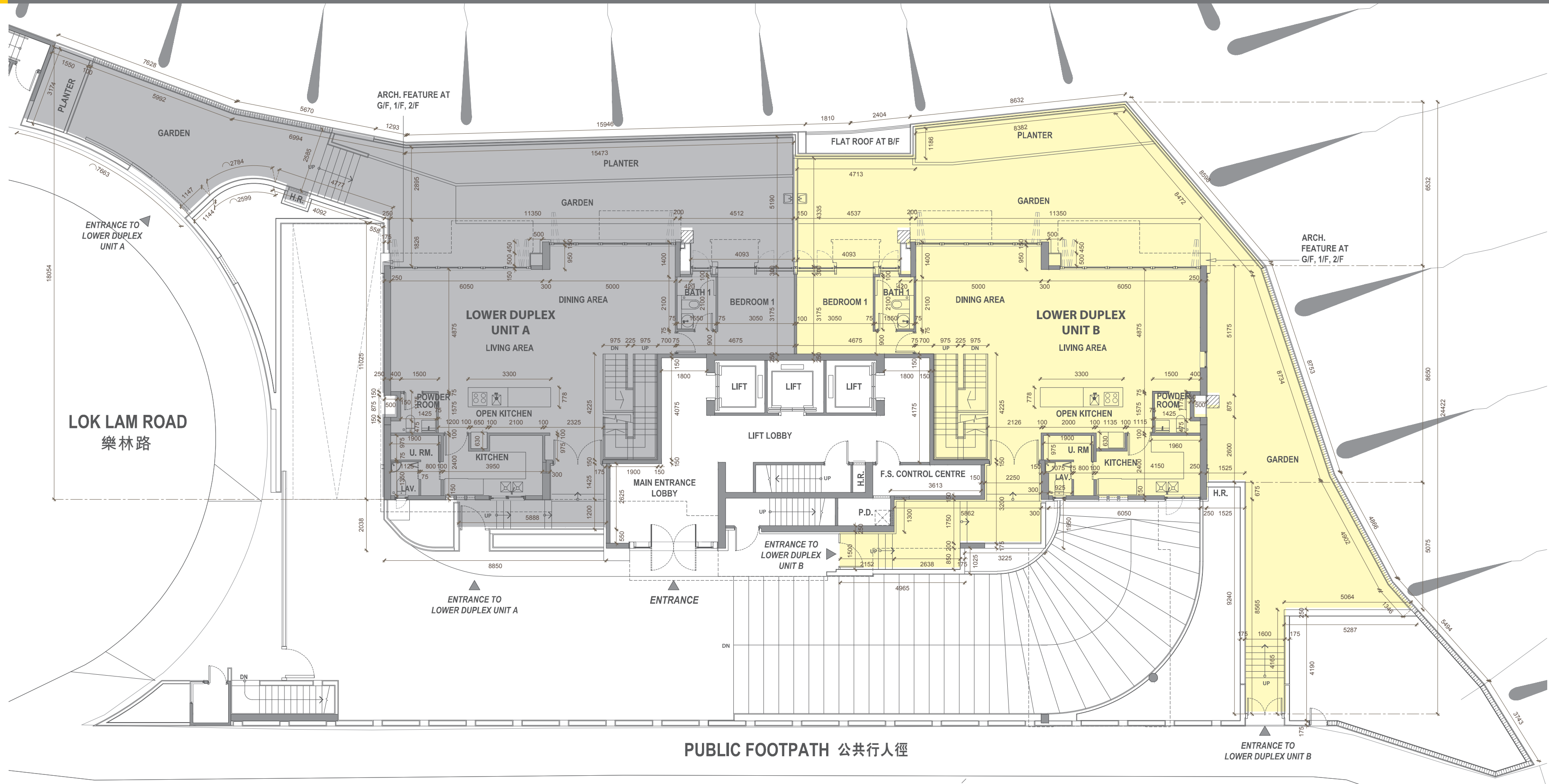
1. The indications of fittings such as kitchen cabinets, sinks, bathtubs, toilet bowls, shower heads and wash basins, etc. shown on the floor plans are indications of their approximate locations only and not indications of their actual size, design or shapes.
2. The dimensions of the floor plans are all structural dimensions in millimeters.
3. There are ceiling bulkheads and/or sunken slab at living/dining room, bedrooms, bathrooms, corridor, store, lavatory, powder room, utility and/or kitchen of each residential property for the air-conditioning system and/or M&E services.

*層與層之間的高度指該樓層之石屎地台面與上層石屎地台面之高度距離。

備註

1. 樓面平面圖所示之裝置如廚櫃、洗滌盤、浴缸、坐廁、花灑龍頭及洗手盆只供展示其大約位置而非展示其實際大小、設計或形狀。
2. 樓面平面圖之尺寸所列數字為以毫米標示之建築結構尺寸。
3. 每個住宅物業的客廳/飯廳、睡房、浴室、走廊、貯物室、洗手間、客廁、工作間及/或廚房有假天花及/或跌級樓板，用以裝置冷氣系統及/或機電設備。

FLOOR PLANS OF RESIDENTIAL PROPERTIES IN THE DEVELOPMENT
發展項目的住宅物業的樓面平面圖



LOK LAM ROAD
樂林路

PUBLIC FOOTPATH 公共行人徑

G/F Floor Plan
地下平面圖



FLOOR PLANS OF RESIDENTIAL PROPERTIES IN THE DEVELOPMENT

發展項目的住宅物業的樓面平面圖

Legend 圖例

ARCH. FEATURE AT G/F, 1/F, 2/F = Architectural feature at G/F, 1/F, 2/F =

於地下、一樓、二樓的建築裝飾

BATH 1 = Bathroom 1 = 浴室 1

BEDROOM 1 = 睡房 1

DINING AREA = 飯廳

DN = DOWN = 落

ENTRANCE = 入口

ENTRANCE TO LOWER DUPLEX UNIT A/B = 底層複式單位 A/B的入口

FLAT ROOF AT B/F = 於地庫的平台

F.S. CONTROL CENTRE = Fire Services Control Centre = 消防控制室

GARDEN = 花園

H.R. = Hose Reel = 消防喉轆

KITCHEN = 廚房

LAV. = Lavatory = 洗手間

LIFT = 升降機

LIFT LOBBY = 升降機大堂

LIVING AREA = 客廳

LOWER DUPLEX UNIT A/B = 底層複式單位A/B

MAIN ENTRANCE LOBBY = 主入口大堂

OPEN KITCHEN = 開放式廚房

P.D. = Pipe Duct = 管槽

PLANTER = 花槽

POWDER ROOM = 客廁

UP = 上

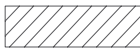
U. RM. = Utility Room = 工作間

The thickness of the floor slabs (excluding plaster) of each residential property is 150 mm and 225 mm.

The floor-to-floor height of each residential property is 3.5 m*.

每個住宅物業的樓板（不包括灰泥）的厚度為150毫米及225毫米。

每個住宅物業的層與層之間的高度為3.5米*。

 Access to access opening for operating CCTV imaging device for drainage inspection as common parts of the building

通道通往供操作閉路電視影像儀器用的渠管檢修口，為建築物的公用部分

* Floor-to-floor height refers to the height between the top surface of the structural slab of a floor and the top surface of the structural slab of its immediate upper floor.

Note

1. The indications of fittings such as kitchen cabinets, sinks, bathtubs, toilet bowls, shower heads and wash basins, etc. shown on the floor plans are indications of their approximate locations only and not indications of their actual size, design or shapes.
2. The dimensions of the floor plans are all structural dimensions in millimeters.
3. There are ceiling bulkheads and/or sunken slab at living/dining room, bedrooms, bathrooms, corridor, store, lavatory, powder room, utility and/or kitchen of each residential property for the air-conditioning system and/or M&E services.

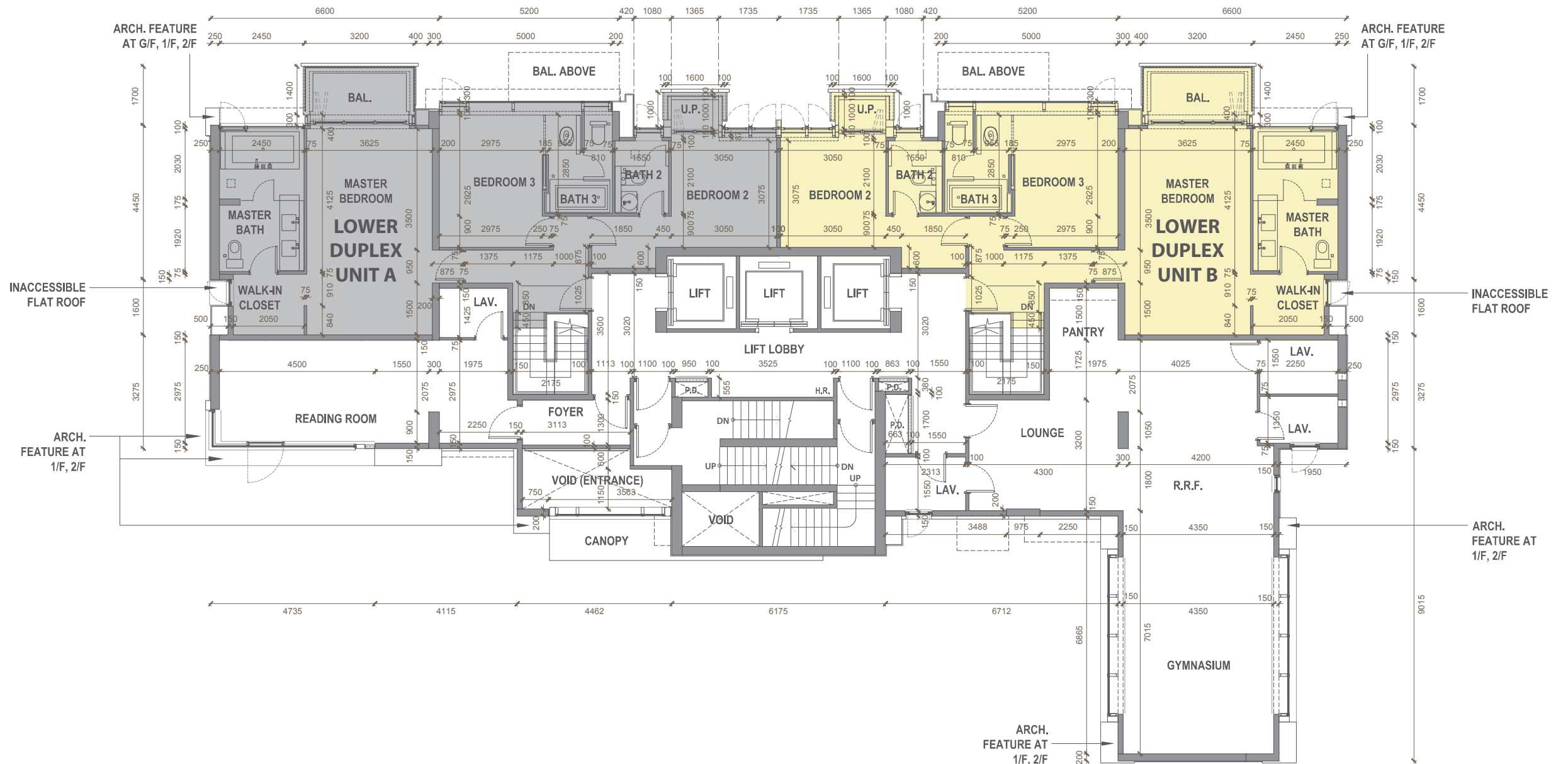
*層與層之間的高度指該樓層之石屎地台面與上層石屎地台面之高度距離。

備註

1. 樓面平面圖所示之裝置如廚櫃、洗滌盤、浴缸、坐廁、花灑龍頭及洗手盆只供展示其大約位置而非展示其實際大小、設計或形狀。
2. 樓面平面圖之尺寸所列數字為以毫米標示之建築結構尺寸。
3. 每個住宅物業的客廳/飯廳、睡房、浴室、走廊、貯物室、洗手間、客廁、工作間及/或廚房有假天花及/或跌級樓板，用以裝置冷氣系統及/或機電設備。

FLOOR PLANS OF RESIDENTIAL PROPERTIES IN THE DEVELOPMENT

發展項目的住宅物業的樓面平面圖



1/F Floor Plan
1樓平面圖

Scale 比例尺



Legend 圖例

ARCH. FEATURE AT G/F, 1/F, 2/F = Architectural feature at G/F, 1/F, 2/F = 於地下、一樓、二樓的建築裝飾

BAL. = Balcony = 露台

BAL. ABOVE = Balcony Above = 上層露台覆蓋部份

BATH 2/3 = Bathroom 2/3 = 浴室 2/3

BEDROOM 2/3 = 睡房 2/3

CANOPY = 簷篷

DN = DOWN = 落

FOYER = 門廳

GYMNASIUM = 健身室

H.R. = Hose Reel = 消防喉轆

INACCESSIBLE FLAT ROOF = 不可抵達的平台

LAV. = Lavatory = 洗手間

LIFT = 升降機

LIFT LOBBY = 升降機大堂

LOUNGE = 休息室

LOWER DUPLEX UNIT A/B = 底層複式單位 A/B

MASTER BATH = Master Bathroom = 主人浴室

MASTER BEDROOM = 主人睡房

PANTRY = 茶水間

P.D. = Pipe Duct = 管槽

READING ROOM = 閱讀室

R.R.F. = Resident's Recreational Facilities = 住客康樂設施

UNIT A/B = 單位 A/B

UP = 上

U.P. = Utility Platform = 工作平台

VOID = 中空

VOID (ENTRANCE) = 中空 (入口)

WALK-IN CLOSET = 衣帽間

The thickness of the floor slabs (excluding plaster) of each residential property is 125 mm, 150 mm and 200 mm.

The floor-to-floor height of each residential property is 3.5 m*.

每個住宅物業的樓板（不包括灰泥）的厚度為125毫米，150毫米及200毫米。

每個住宅物業的層與層之間的高度為3.5米*。

* Floor-to-floor height refers to the height between the top surface of the structural slab of a floor and the top surface of the structural slab of its immediate upper floor.

Note

1. The indications of fittings such as kitchen cabinets, sinks, bathtubs, toilet bowls, shower heads and wash basins, etc. shown on the floor plans are indications of their approximate locations only and not indications of their actual size, design or shapes.
2. The dimensions of the floor plans are all structural dimensions in millimeters.
3. There are ceiling bulkheads and/or sunken slab at living/dining room, bedrooms, bathrooms, corridor, store, lavatory, powder room, utility and/or kitchen of each residential property for the air-conditioning system and/or M&E services.

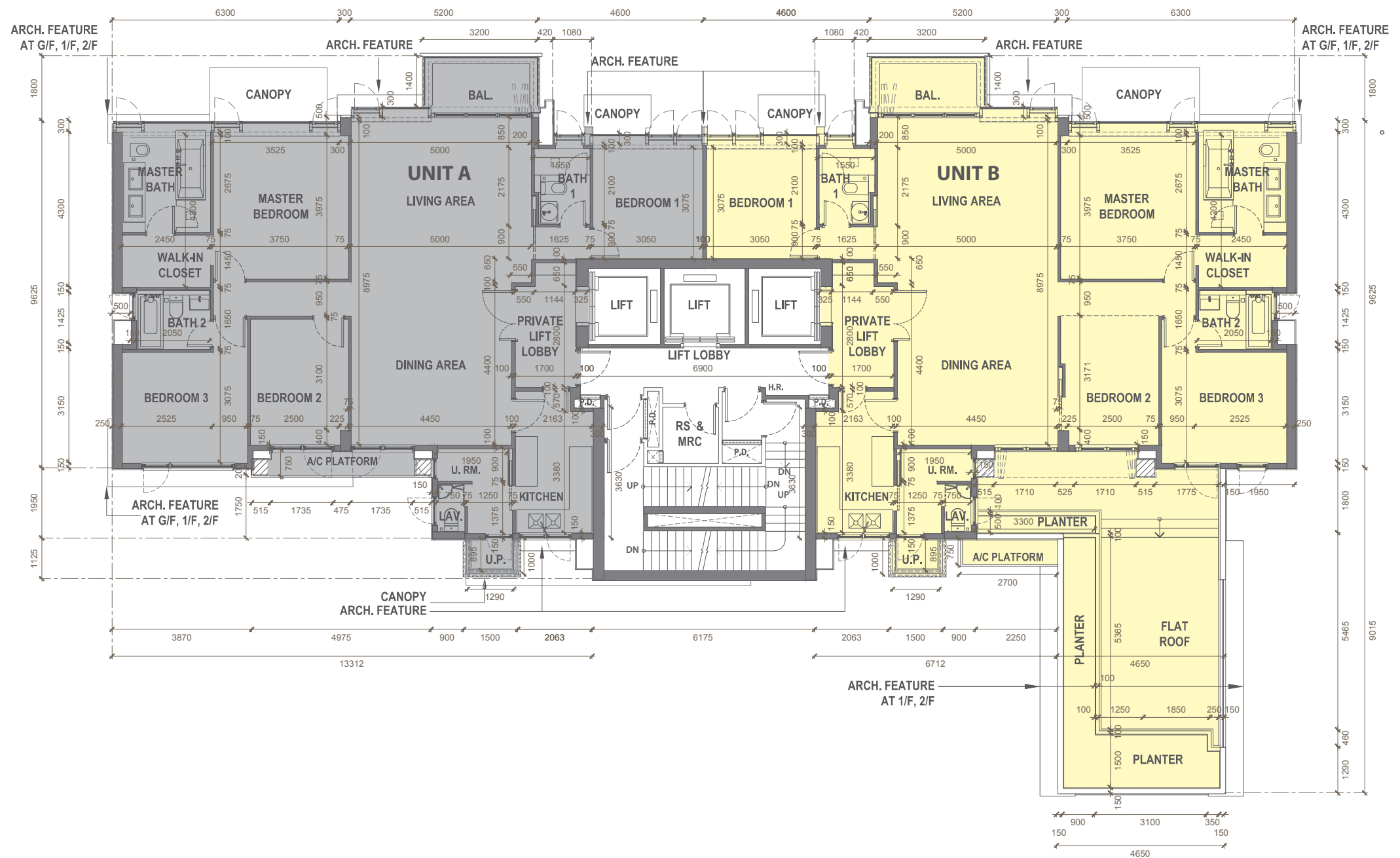
*層與層之間的高度指該樓層之石屎地台面與上層石屎地台面之高度距離。

備註

1. 樓面平面圖所示之裝置如廚櫃、洗滌盤、浴缸、坐廁、花灑龍頭及洗手盆只供展示其大約位置而非展示其實際大小、設計或形狀。
2. 樓面平面圖之尺寸所列數字為以毫米標示之建築結構尺寸。
3. 每個住宅物業的客廳/飯廳、睡房、浴室、走廊、貯物室、洗手間、客廳、工作間及/或廚房有假天花及/或跌級樓板，用以裝置冷氣系統及/或機電設備。

FLOOR PLANS OF RESIDENTIAL PROPERTIES IN THE DEVELOPMENT

發展項目的住宅物業的樓面平面圖



2/F Floor Plan
2樓平面圖

Scale 比例尺




FLOOR PLANS OF RESIDENTIAL PROPERTIES IN THE DEVELOPMENT

發展項目的住宅物業的樓面平面圖

Legend 圖例

A/C PLATFORM = Air-conditioning Platform = 冷氣機平台
ARCH. FEATURE AT G/F, 1/F, 2/F = Architectural feature at G/F, 1/F, 2/F = 於地下、一樓、二樓的建築裝飾
BAL. = Balcony = 露台
BATH 1/2 = Bathroom 1/2 = 浴室 1/2
BEDROOM 1/2/3 = 睡房 1/2/3
CANOPY = 簷篷
DINING AREA = 飯廳
DN = DOWN = 落
FLAT ROOF = 平台
H.R. = Hose Reel = 消防喉轆
KITCHEN = 廚房
LAV. = Lavatory = 洗手間
LIFT = 升降機
LIFT LOBBY = 升降機大堂
LIVING AREA = 客廳
MASTER BATH = Master Bathroom = 主人浴室
MASTER BEDROOM = 主人睡房
PLANTER = 花槽
PRIVATE LIFT LOBBY = 私人升降機大堂
P.D. = Pipe Duct = 管槽
RS & MRC = Refuse Storage & Material Recovery Chamber = 垃圾及物料回收房及垃圾槽
UNIT A/B = 單位 A/B
UP = 上
U.P. = Utility Platform = 工作平台
U. RM. = Utility Room = 工作間
WALK-IN CLOSET = 衣帽間

 Access to access opening for operating CCTV imaging device for drainage inspection as common parts of the building
通道通往供操作閉路電視影像儀器用的渠管檢修口，為建築物的公用部分

* Floor-to-floor height refers to the height between the top surface of the structural slab of a floor and the top surface of the structural slab of its immediate upper floor.

Note

1. The indications of fittings such as kitchen cabinets, sinks, bathtubs, toilet bowls, shower heads and wash basins, etc. shown on the floor plans are indications of their approximate locations only and not indications of their actual size, design or shapes.
2. The dimensions of the floor plans are all structural dimensions in millimeters.
3. There are ceiling bulkheads and/or sunken slab at living/dining room, bedrooms, bathrooms, corridor, store, lavatory, powder room, utility and/or kitchen of each residential property for the air-conditioning system and/or M&E services.

The thickness of the floor slabs (excluding plaster) of each residential property is 125 mm, 150 mm, 175 mm, 225 mm and 250 mm.

The floor-to-floor height of each residential property is 3.5 m and 3.86 m*.

每個住宅物業的樓板（不包括灰泥）的厚度為125毫米，150毫米，175毫米，225毫米及250毫米。

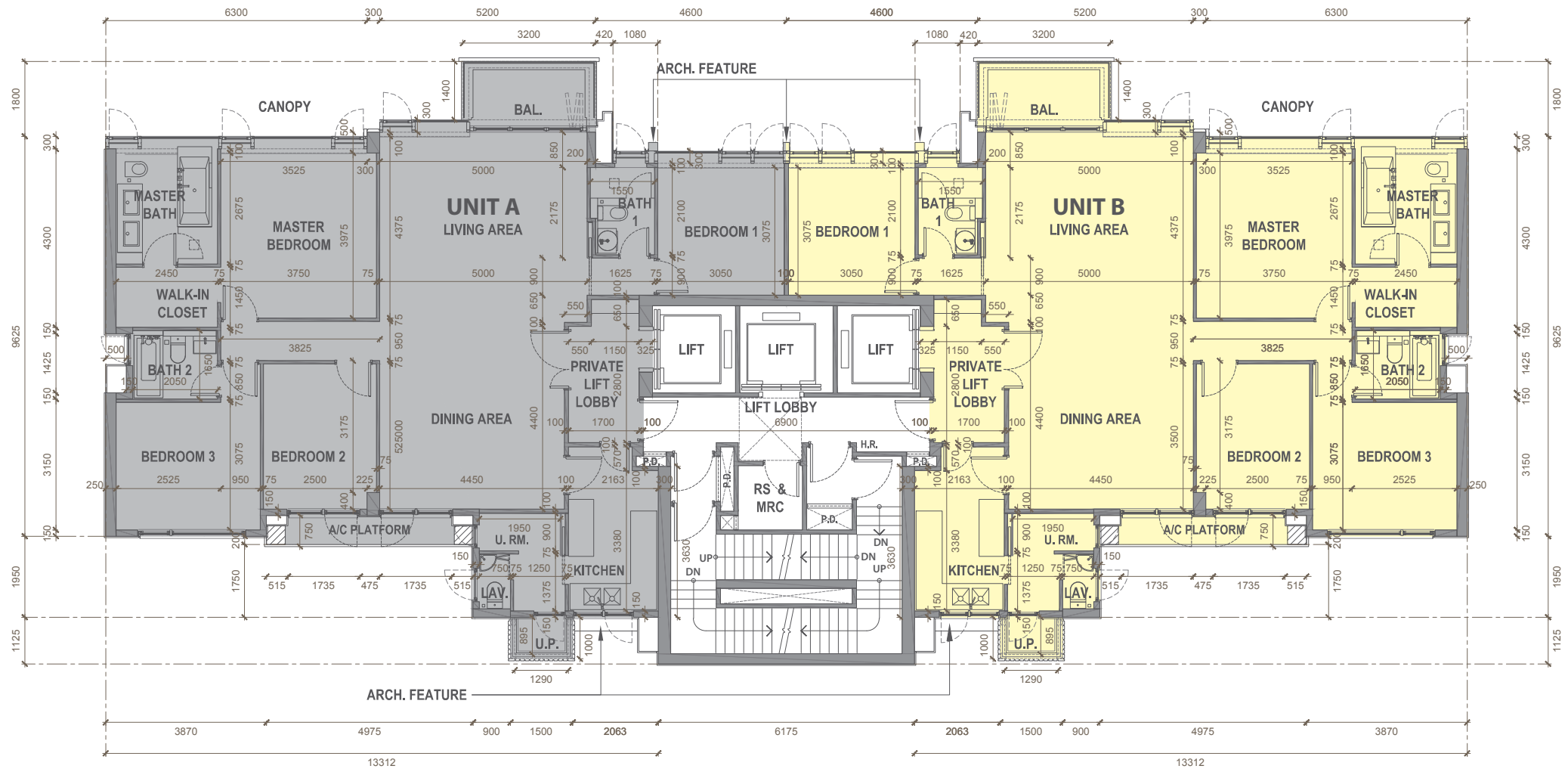
每個住宅物業的層與層之間的高度為3.5米及3.86米*。

*層與層之間的高度指該樓層之石屎地台面與上層石屎地台面之高度距離。

備註

1. 樓面平面圖所示之裝置如廚櫃、洗滌盤、浴缸、坐廁、花灑龍頭及洗手盆只供展示其大約位置而非展示其實際大小、設計或形狀。
2. 樓面平面圖之尺寸所列數字為以毫米標示之建築結構尺寸。
3. 每個住宅物業的客廳/飯廳、睡房、浴室、走廊、貯物室、洗手間、客廁、工作間及/或廚房有假天花及/或跌級樓板，用以裝置冷氣系統及/或機電設備。

FLOOR PLANS OF RESIDENTIAL PROPERTIES IN THE DEVELOPMENT 發展項目的住宅物業的樓面平面圖



3/F, 5/F & 6/F Floor Plan
3樓、5樓及6樓平面圖

Scale 比例尺




FLOOR PLANS OF RESIDENTIAL PROPERTIES IN THE DEVELOPMENT

發展項目的住宅物業的樓面平面圖

Legend 圖例

A/C PLATFORM = Air-conditioning Platform = 冷氣機平台
ARCH. FEATURE = Architectural feature = 建築裝飾
BAL. = Balcony = 露台
BATH 1/2 = Bathroom 1/2 = 浴室 1/2
BEDROOM 1/2/3 = 睡房 1/2/3
CANOPY = 簷篷
DINING AREA = 飯廳
DN = DOWN = 落
H.R. = Hose Reel = 消防喉轆
KITCHEN = 廚房
LAV. = Lavatory = 洗手間
LIFT = 升降機
LIFT LOBBY = 升降機大堂
LIVING AREA = 客廳
MASTER BATH = Master Bathroom = 主人浴室
MASTER BEDROOM = 主人睡房
PRIVATE LIFT LOBBY = 私人升降機大堂
P.D. = Pipe Duct = 管槽
RS & MRC = Refuse Storage & Material Recovery Chamber = 垃圾及物料回收房及垃圾槽
UNIT A/B = 單位 A/B
UP = 上
U.P. = Utility Platform = 工作平台
U. RM. = Utility Room = 工作間
WALK-IN CLOSET = 衣帽間

 Access to access opening for operating CCTV imaging device for drainage inspection as common parts of the building
通道通往供操作閉路電視影像儀器用的渠管檢修口，為建築物的公用部分

* Floor-to-floor height refers to the height between the top surface of the structural slab of a floor and the top surface of the structural slab of its immediate upper floor.

Note

1. The indications of fittings such as kitchen cabinets, sinks, bathtubs, toilet bowls, shower heads and wash basins, etc. shown on the floor plans are indications of their approximate locations only and not indications of their actual size, design or shapes.
2. The dimensions of the floor plans are all structural dimensions in millimeters.
3. There are ceiling bulkheads and/or sunken slab at living/dining room, bedrooms, bathrooms, corridor, store, lavatory, powder room, utility and/or kitchen of each residential property for the air-conditioning system and/or M&E services.

The thickness of the floor slabs (excluding plaster) of each residential property is 125 mm, 150 mm and 175 mm.

The floor-to-floor height of each residential property is 3.5 m and 3.86 m*.

每個住宅物業的樓板（不包括灰泥）的厚度為125毫米，150毫米及175毫米。

每個住宅物業的層與層之間的高度為3.5米及3.86米*。

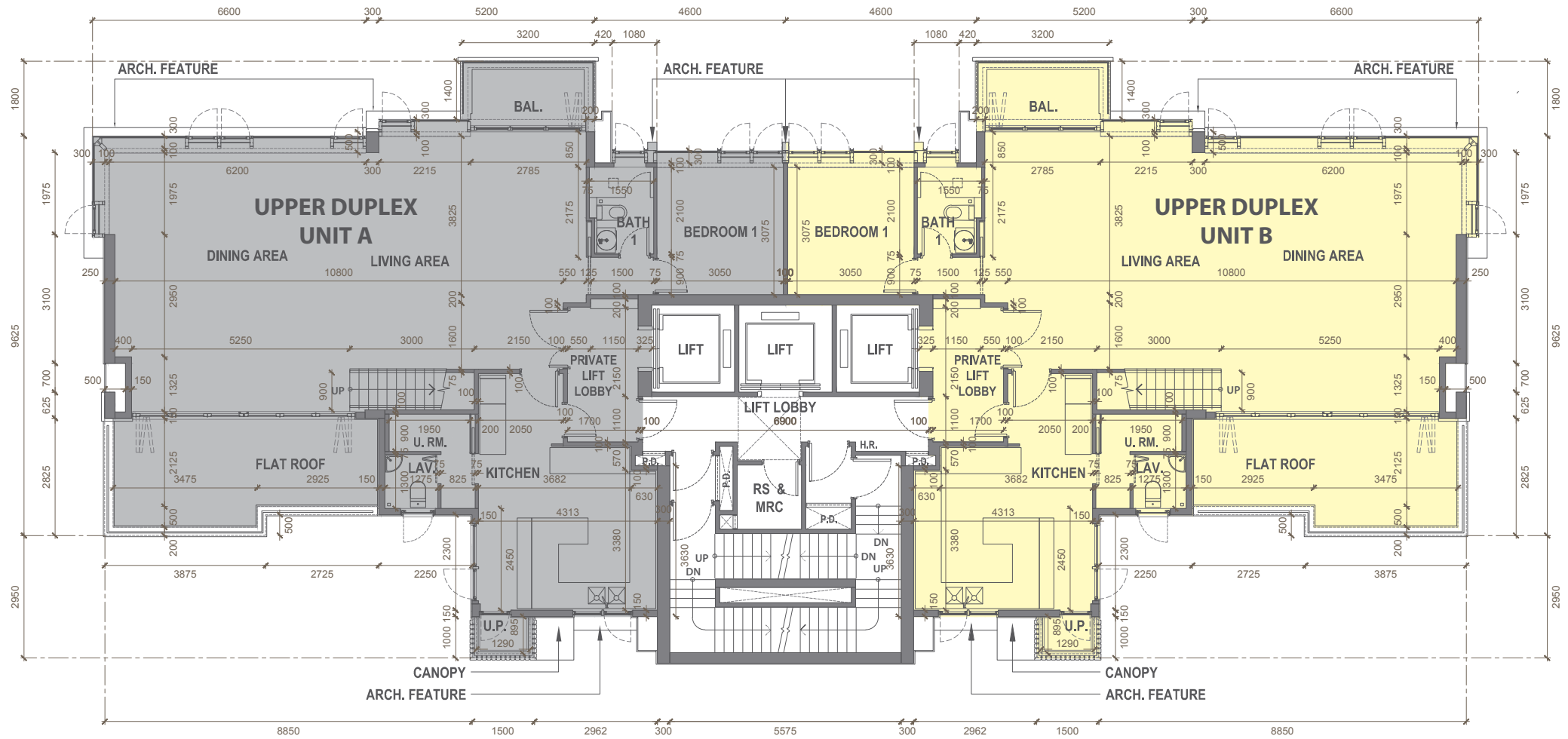
*層與層之間的高度指該樓層之石屎地台面與上層石屎地台面之高度距離。

備註

1. 樓面平面圖所示之裝置如廚櫃、洗滌盤、浴缸、坐廁、花灑龍頭及洗手盆只供展示其大約位置而非展示其實際大小、設計或形狀。
2. 樓面平面圖之尺寸所列數字為以毫米標示之建築結構尺寸。
3. 每個住宅物業的客廳/飯廳、睡房、浴室、走廊、貯物室、洗手間、客廳、工作間及/或廚房有假天花及/或跌級樓板，用以裝置冷氣系統及/或機電設備。

FLOOR PLANS OF RESIDENTIAL PROPERTIES IN THE DEVELOPMENT

發展項目的住宅物業的樓面平面圖



7/F Floor Plan
7樓平面圖

Scale 比例尺



FLOOR PLANS OF RESIDENTIAL PROPERTIES IN THE DEVELOPMENT

發展項目的住宅物業的樓面平面圖

Legend 圖例

ARCH. FEATURE = Architectural feature = 建築裝飾

BAL. = Balcony = 露台

BATH 1 = Bathroom 1 = 浴室 1

BEDROOM 1 = 睡房 1

CANOPY = 簷篷

DINING AREA = 飯廳

DN = DOWN = 落

FLAT ROOF = 平台

H.R. = Hose Reel = 消防喉轆

KITCHEN = 廚房

LAV. = Lavatory = 洗手間

LIFT = 升降機

LIFT LOBBY = 升降機大堂

LIVING AREA = 客廳

P.D. = Pipe Duct = 管槽

PRIVATE LIFT LOBBY = 私人升降機大堂

RS & MRC = Refuse Storage & Material Recovery Chamber = 垃圾及物料回收房及垃圾槽

UP = 上

U.P. = Utility Platform = 工作平台

UPPER DUPLEX UNIT A/B = 頂層複式單位 A/B

U. RM. = Utility Room = 工作間

The thickness of the floor slabs (excluding plaster) of each residential property is 125 mm, 150 mm and 175 mm.

The floor-to-floor height of each residential property is 3.5 m, 3.86 m and 3.925m*.

每個住宅物業的樓板（不包括灰泥）的厚度為125毫米，150毫米及175毫米。

每個住宅物業的層與層之間的高度為3.5米，3.86米及3.925米*。

* Floor-to-floor height refers to the height between the top surface of the structural slab of a floor and the top surface of the structural slab of its immediate upper floor.

Note

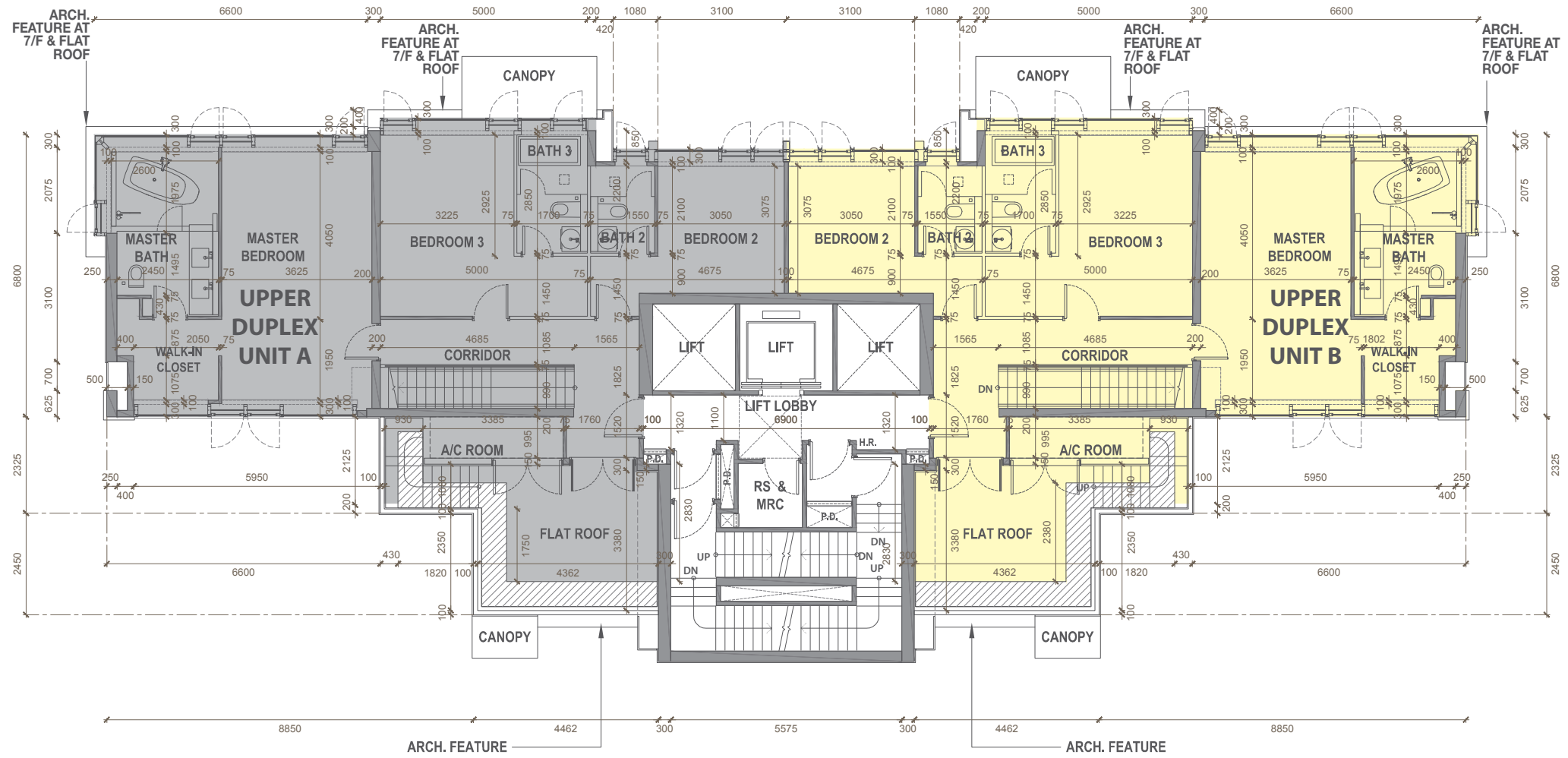
1. The indications of fittings such as kitchen cabinets, sinks, bathtubs, toilet bowls, shower heads and wash basins, etc. shown on the floor plans are indications of their approximate locations only and not indications of their actual size, design or shapes.
2. The dimensions of the floor plans are all structural dimensions in millimeters.
3. There are ceiling bulkheads and/or sunken slab at living/dining room, bedrooms, bathrooms, corridor, store, lavatory, powder room, utility and/or kitchen of each residential property for the air-conditioning system and/or M&E services.

*層與層之間的高度指該樓層之石屎地台面與上層石屎地台面之高度距離。

備註

1. 樓面平面圖所示之裝置如廚櫃、洗滌盤、浴缸、坐廁、花灑龍頭及洗手盆只供展示其大約位置而非展示其實際大小、設計或形狀。
2. 樓面平面圖之尺寸所列數字為以毫米標示之建築結構尺寸。
3. 每個住宅物業的客廳/飯廳、睡房、浴室、走廊、貯物室、洗手間、客廁、工作間及/或廚房有假天花及/或跌級樓板，用以裝置冷氣系統及/或機電設備。

FLOOR PLANS OF RESIDENTIAL PROPERTIES IN THE DEVELOPMENT
 發展項目的住宅物業的樓面平面圖



8/F Floor Plan
 8樓平面圖

Scale 比例尺



FLOOR PLANS OF RESIDENTIAL PROPERTIES IN THE DEVELOPMENT

發展項目的住宅物業的樓面平面圖

Legend 圖例

A/C ROOM = Air-conditioning Room = 冷氣機房

ARCH. FEATURE AT 7/F & FLAT ROOF = Architectural feature at 7/F & Flat Roof = 於7樓及平台的建築裝飾

BATH 2/3 = Bathroom 2/3 = 浴室 2/3

BEDROOM 2/3 = 睡房 2/3

CANOPY = 簷篷

CORRIDOR = 走廊

DN = DOWN = 落

FLAT ROOF = 平台

H.R. = Hose Reel = 消防喉轆

LIFT = 升降機

LIFT LOBBY = 升降機大堂

MASTER BATH = Master Bathroom = 主人浴室

MASTER BEDROOM = 主人睡房

P.D. = Pipe Duct = 管槽

RS & MRC = Refuse Storage & Material Recovery Chamber = 垃圾及物料回收房及垃圾槽

UP = 上

UPPER DUPLEX UNIT A/B = 頂層複式單位 A/B

WALK-IN CLOSET = 衣帽間

The thickness of the floor slabs (excluding plaster) of each residential property is 125 mm, 150 mm and 175 mm.

The floor-to-floor height of each residential property is 3.5 m*.

每個住宅物業的樓板（不包括灰泥）的厚度為125毫米，150毫米及175毫米。

每個住宅物業的層與層之間的高度為3.5米*。



Access to access opening for operating CCTV imaging device for drainage inspection as common parts of the building

通道通往供操作閉路電視影像儀器用的渠管檢修口，為建築物的公用部分

* Floor-to-floor height refers to the height between the top surface of the structural slab of a floor and the top surface of the structural slab of its immediate upper floor.

Note

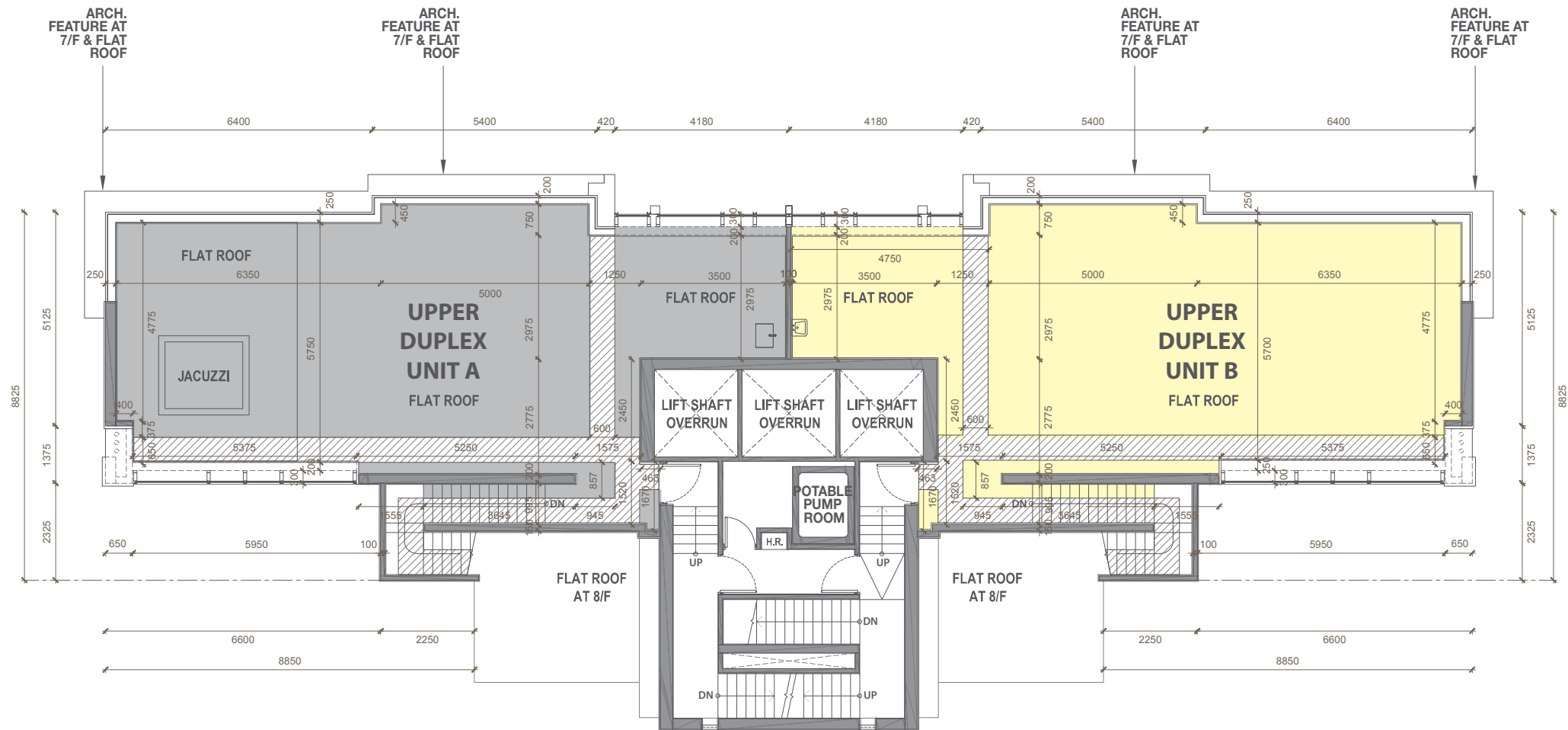
1. The indications of fittings such as kitchen cabinets, sinks, bathtubs, toilet bowls, shower heads and wash basins, etc. shown on the floor plans are indications of their approximate locations only and not indications of their actual size, design or shapes.
2. The dimensions of the floor plans are all structural dimensions in millimeters.
3. There are ceiling bulkheads and/or sunken slab at living/dining room, bedrooms, bathrooms, corridor, store, lavatory, powder room, utility and/or kitchen of each residential property for the air-conditioning system and/or M&E services.

*層與層之間的高度指該樓層之石屎地台面與上層石屎地台面之高度距離。

備註

1. 樓面平面圖所示之裝置如廚櫃、洗滌盤、浴缸、坐廁、花灑龍頭及洗手盆只供展示其大約位置而非展示其實際大小、設計或形狀。
2. 樓面平面圖之尺寸所列數字為以毫米標示之建築結構尺寸。
3. 每個住宅物業的客廳/飯廳、睡房、浴室、走廊、貯物室、洗手間、客廁、工作間及/或廚房有假天花及/或跌級樓板，用以裝置冷氣系統及/或機電設備。

FLOOR PLANS OF RESIDENTIAL PROPERTIES IN THE DEVELOPMENT 發展項目的住宅物業的樓面平面圖



Flat Roof Plan
平台平面圖

Scale 比例尺



FLOOR PLANS OF RESIDENTIAL PROPERTIES IN THE DEVELOPMENT

發展項目的住宅物業的樓面平面圖

Legend 圖例

ARCH. FEATURE at 7/F & FLAT ROOF = Architectural feature at 7/F & Flat Roof =
於7樓及平台的建築裝飾
DN = DOWN = 落
FLAT ROOF = 平台
FLAT ROOF AT 8/F = 於8樓的平台
H.R. = HOSE REEL = 消防喉轆
JACUZZI = 按摩浴缸
LIFT SHAFT OVERRUN = 升降機槽超程
POTABLE PUMP ROOM = 飲用水泵房
UP = 上
UPPER DUPLEX UNIT A/B = 頂層複式單位 A/B

The thickness of the floor slabs (excluding plaster) of each residential property is 125 mm, 150 mm and 175 mm.

每個住宅物業的樓板（不包括灰泥）的厚度為125毫米，150毫米及175毫米。

The Flat Roof on this floor plan refers to the same floor as Roof under Summary of Deed of Mutual Covenant.

此平面圖上的平台與公契的摘要內的天台是指同一樓層。



Access to access opening for operating CCTV imaging device for drainage inspection as common parts of the building

通道通往供操作閉路電視影像儀器用的渠管檢修口，為建築物的公用部分

Note

1. The dimensions of the floor plans are all structural dimensions in millimeters.

備註

1. 樓面平面圖之尺寸所列數字為以毫米標示之建築結構尺寸。