

Floor plans of residential properties in the development

發展項目的住宅物業的樓面平面圖

Remarks applicable to the floor plans in this section :

1. There are architectural features, metal grilles and/or exposed pipes on the external walls of some of the floors. For details, please refer to the latest approved building plans and/or approved drainage plans and/or other relevant plans.
2. Common pipes exposed and/or enclosed in cladding are located at/adjacent to the balcony and/or flat roof and/or air-conditioner platform and/or external wall of some residential properties. For details, please refer to the latest approved building plans and/or approved drainage plans and/or other relevant plans.
3. There are sunken slabs for mechanical and electrical services and/or false ceiling / bulkheads for the air-conditioning fittings and/or mechanical and electrical services at some residential properties.
4. Balconies and Utility Platforms are non-enclosed areas.
5. Symbols of fittings and fitments such as bath tub, sink, water closet, shower, sink counter, etc. in the floor plans are prepared based on the latest approved building plans and are for general indication only.

適用於本節之樓面平面圖之備註：

1. 部分樓層外牆範圍設有建築裝飾、金屬格柵及/或外露喉管，詳細資料請參考最新經批准的建築圖則及/或經批准的排水設施圖則及/或其他相關圖則。
2. 部分住宅物業的露台及/或平台及/或空調機平台及/或外牆上/附近設有外露及/或外牆裝飾板(覆蓋板)內藏之公用喉管，詳細資料請參考最新經批准的建築圖則及/或經批准的排水設施圖則及/或其他相關圖則。
3. 部分住宅物業有用以安裝機電設備的跌級樓板及/或用以裝置空調裝備及/或其他機電設備的假天花/裝飾橫樑。
4. 露台及工作平台為不可封閉的地方。
5. 樓面平面圖上所顯示的裝置符號，如浴缸、洗滌盆、坐廁、花灑、洗滌盆櫃等乃按最新的經批准的建築圖則繪製，只作一般示意用途。

Legend for floor plans of residential properties in the Development
發展項目的住宅物業的樓面平面圖圖例

A/C = Air Conditioner Platform 空調機平台
Bal = Balcony 露台
Bal Above = Balcony Above 上層露台
Bath = Bathroom 浴室
Bedroom = 睡房
Common Flat Roof = 公用平台
D = Down 下
Dining = Dining Room 飯廳
Dog House = Mechanical & Electrical Services
Duct connecting to the Floor Below 連接下層機電設施管道
ELV = Extra Low Voltage Duct/Room 低電壓槽/房
EMR = Electricity Meter Room 電錶房
Flat Roof = 平台
Gym = 健身室
HR = Hose Reel 消防喉轆
Kitchen = 廚房
Lift = 升降機
Lobby = Lift Lobby 升降機大堂
Living = Living Room 客廳
Master Bathroom = 主人浴室
Master Bedroom = 主人睡房
Open Air = 露天地方
Open Kitchen = 開放式廚房
PD = Pipe Duct 管道槽
Store = 儲物房
Study Room = 書房
U = Up 上
UP = Utility Platform 工作平台
WMC = Water Meter Cabinet 水錶箱

Floor plans of residential properties in the development

發展項目的住宅物業的樓面平面圖

2/F
2樓

Description 描述	Residential Unit 住宅單位			
	A	B	C	D
Floor-to-floor height (refers to the height between the top surface of the structural slab of a floor and the top surface of the structural slab of its immediate upper floor) of each residential property (m) 每個住宅物業的層與層之間的高度 (指該樓層之石屎地台面與上一層石屎地台面之高度距離)(米)	2.895		2.745	
	3.095	3.095	2.845	2.895
	3.295		2.945	3.095
Thickness of the floor slabs (excluding plaster) of each residential property (mm) 每個住宅物業的樓板 (不包括灰泥)厚度(毫米)	150		125	150
	175	150	150	300
	300	400		

The internal areas of the residential properties on the upper floors will generally be slightly larger than those on the lower floors because of the reducing thickness of the structural walls on the upper floors.

Remark :
The dimensions in the floor plans are all structural dimensions in millimetre.

因住宅物業的較高樓層的結構牆的厚度遞減，較高樓層的內部面積，一般比較低樓層的內部面積稍大。

備註：
樓面平面圖之尺規所列數字為以毫米標示之建築結構尺寸。

Legend 圖例

A/C = Air Conditioner Platform 空調機平台
Bal = Balcony 露台
Bal Above = Balcony Above 上層露台
Bath = Bathroom 浴室
Bedroom = 睡房
Common Flat Roof = 公用平台
D = Down 下
Dining = Dining Room 飯廳

Dog House = Mechanical & Electrical Services
Duct connecting to the Floor Below
連接下層機電設施管道
ELV = Extra Low Voltage Duct/Room 低電壓槽/房
EMR = Electricity Meter Room 電錶房
Flat Roof = 平台
Gym = 健身室
HR = Hose Reel 消防喉轆

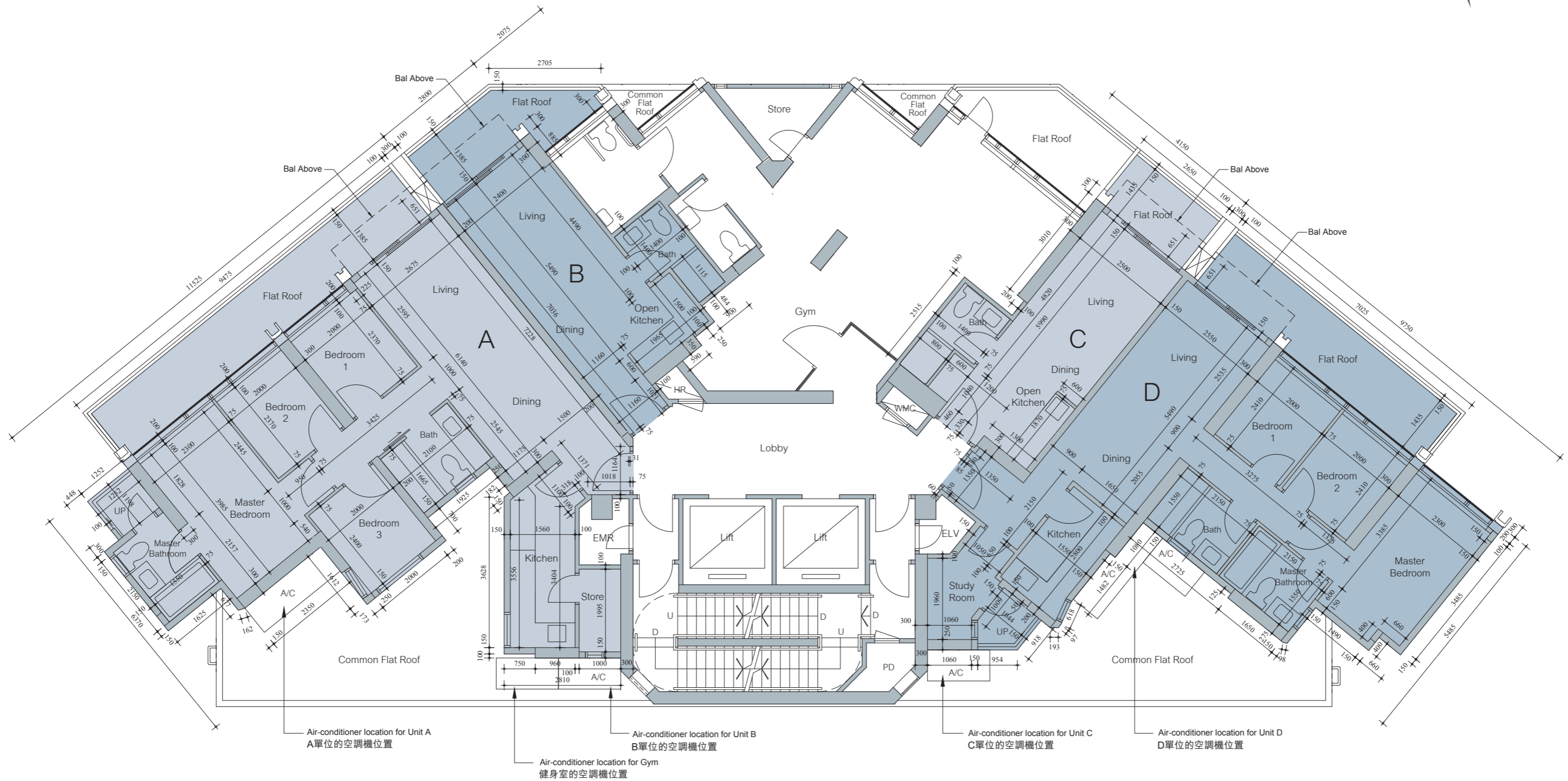
Kitchen = 廚房
Lift = 升降機
Lobby = Lift Lobby 升降機大堂
Living = Living Room 客廳
Master Bathroom = 主人浴室
Master Bedroom = 主人睡房
Open Air = 露天地方
Open Kitchen = 開放式廚房

PD = Pipe Duct 管道槽
Store = 儲物房
Study Room = 書房
U = Up 上
UP = Utility Platform 工作平台
WMC = Water Meter Cabinet 水錶箱

Floor plans of residential properties in the development

發展項目的住宅物業的樓面平面圖

2/F
2樓



Scale 0 1 2 3 4 5M(米)
比例

Floor plans of residential properties in the development

發展項目的住宅物業的樓面平面圖

3/F
3樓

Description 描述	Residential Unit 住宅單位			
	A	B	C	D
Floor-to-floor height (refers to the height between the top surface of the structural slab of a floor and the top surface of the structural slab of its immediate upper floor) of each residential property (m) 每個住宅物業的層與層之間的高度 (指該樓層之石屎地台面與上一層石屎地台面之高度距離)(米)	3.095			
Thickness of the floor slabs (excluding plaster) of each residential property (mm) 每個住宅物業的樓板 (不包括灰泥)厚度(毫米)	150 175 300	150 400 600	150 175 200	150 300

The internal areas of the residential properties on the upper floors will generally be slightly larger than those on the lower floors because of the reducing thickness of the structural walls on the upper floors.

Remark :
The dimensions in the floor plans are all structural dimensions in millimetre.

因住宅物業的較高樓層的結構牆的厚度遞減，較高樓層的內部面積，一般比較低樓層的內部面積稍大。

備註：
樓面平面圖之尺規所列數字為以毫米標示之建築結構尺寸。

Legend 圖例

A/C = Air Conditioner Platform 空調機平台
Bal = Balcony 露台
Bal Above = Balcony Above 上層露台
Bath = Bathroom 浴室
Bedroom = 睡房
Common Flat Roof = 公用平台
D = Down 下
Dining = Dining Room 飯廳

Dog House = Mechanical & Electrical Services
Duct connecting to the Floor Below
連接下層機電設施管道
ELV = Extra Low Voltage Duct/Room 低電壓槽/房
EMR = Electricity Meter Room 電錶房
Flat Roof = 平台
Gym = 健身室
HR = Hose Reel 消防喉轆

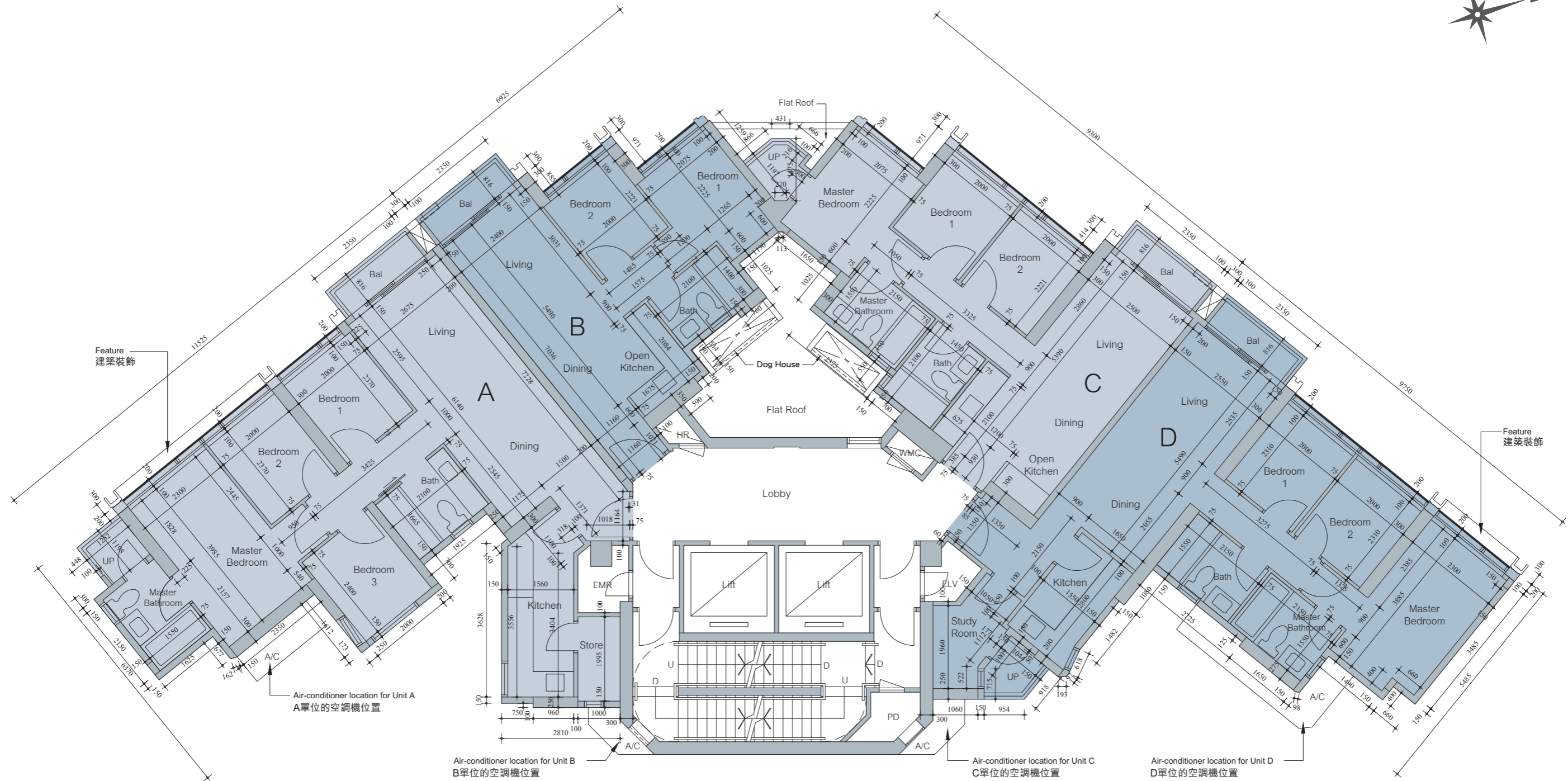
Kitchen = 廚房
Lift = 升降機
Lobby = Lift Lobby 升降機大堂
Living = Living Room 客廳
Master Bathroom = 主人浴室
Master Bedroom = 主人睡房
Open Air = 露天地方
Open Kitchen = 開放式廚房

PD = Pipe Duct 管道槽
Store = 儲物房
Study Room = 書房
U = Up 上
UP = Utility Platform 工作平台
WMC = Water Meter Cabinet 水錶箱

Floor plans of residential properties in the development

發展項目的住宅物業的樓面平面圖

3/F
3樓



Scale 0 1 2 3 4 5M (米)
比例

Floor plans of residential properties in the development

發展項目的住宅物業的樓面平面圖

5/F-12/F, 15/F - 23/F & 25/F - 30/F (4/F, 13/F, 14/F & 24/F are omitted)
5樓 - 12樓、15樓 - 23樓、25樓 - 30樓(不設4樓、13樓、14樓及24樓)

Description 描述	Residential Unit 住宅單位				
	A	B	C	D	
Floor-to-floor height (refers to the height between the top surface of the structural slab of a floor and the top surface of the structural slab of its immediate upper floor) of each residential property (m) 每個住宅物業的層與層之間的高度 (指該樓層之石屎地台面與上一層石屎地台面之高度距離)(米)	5/F-12/F, 15/F - 23/F & 25/F - 29/F (4/F, 13/F, 14/F & 24/F are omitted) 5樓至12樓、15樓至23樓及25樓至29樓 (不設4樓、13樓、14樓及24樓)	3.095			
	30/F 30樓	3.140	3.140	3.140	3.140
		3.340	3.190	3.290	3.340
		3.490	3.340	3.390	3.340
			3.490		
Thickness of the floor slabs (excluding plaster) of each residential property (mm) 每個住宅物業的樓板 (不包括灰泥)厚度(毫米)	5/F-12/F, 15/F - 23/F & 25/F - 29/F (4/F, 13/F, 14/F & 24/F are omitted) 5樓至12樓、15樓至23樓及25樓至29樓 (不設4樓、13樓、14樓及24樓)	150	150	150	150
		175	200	175	150
		300	600	200	300
	30/F 30樓	150	150	150	150
		175	400	175	150
		300	600	200	300

The internal areas of the residential properties on the upper floors will generally be slightly larger than those on the lower floors because of the reducing thickness of the structural walls on the upper floors.

因住宅物業的較高樓層的結構牆的厚度遞減，較高樓層的內部面積，一般比較低樓層的內部面積稍大。

Remark :
The dimensions in the floor plans are all structural dimensions in millimetre.

備註：
樓面平面圖之尺規所列數字為以毫米標示之建築結構尺寸。

Legend 圖例

A/C = Air Conditioner Platform 空調機平台
Bal = Balcony 露台
Bal Above = Balcony Above 上層露台
Bath = Bathroom 浴室
Bedroom = 睡房
Common Flat Roof = 公用平台
D = Down 下
Dining = Dining Room 飯廳

Dog House = Mechanical & Electrical Services
Duct connecting to the Floor Below
連接下層機電設施管道
ELV = Extra Low Voltage Duct/Room 低電壓槽/房
EMR = Electricity Meter Room 電錶房
Flat Roof = 平台
Gym = 健身室
HR = Hose Reel 消防喉轆

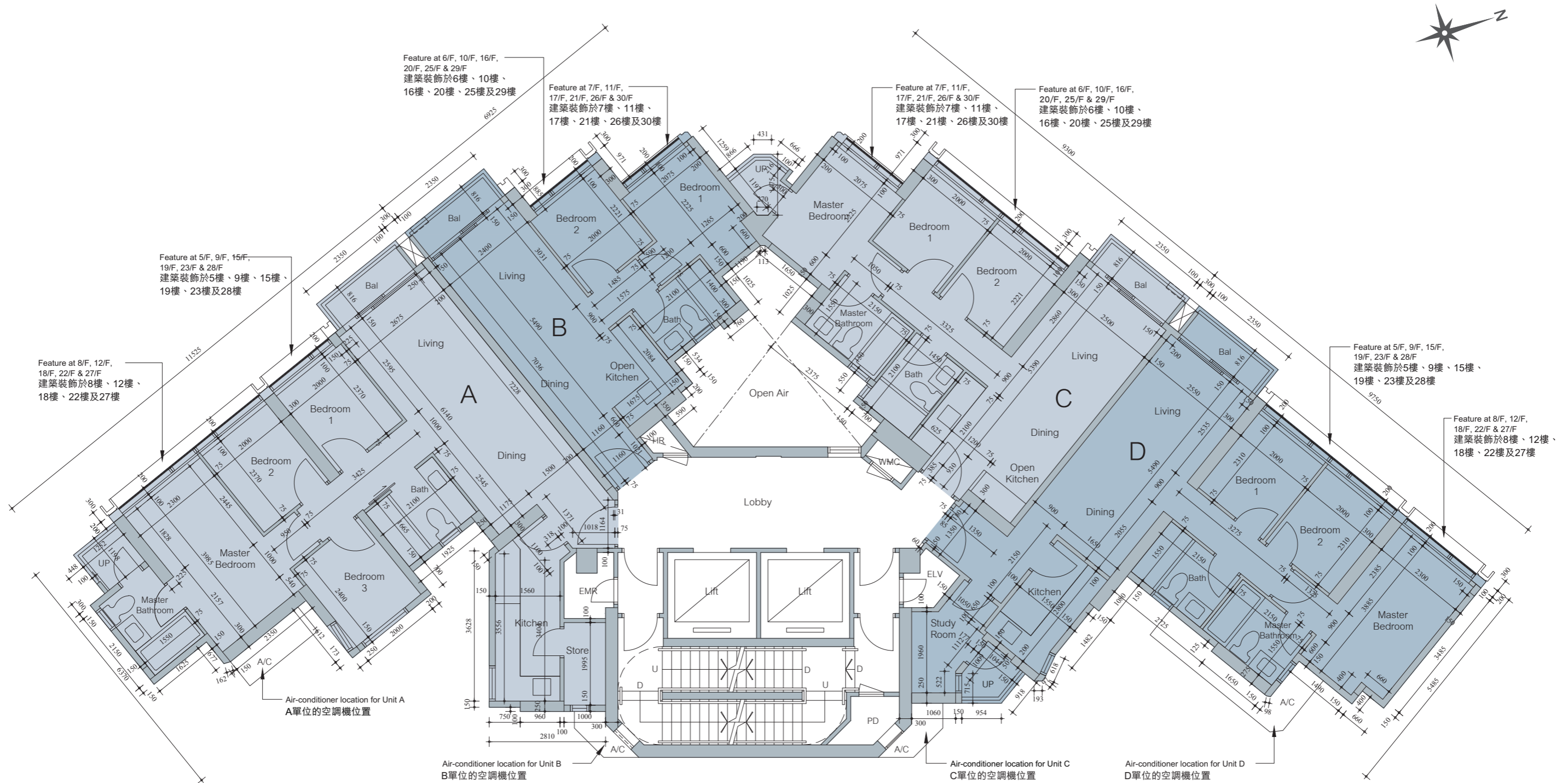
Kitchen = 廚房
Lift = 升降機
Lobby = Lift Lobby 升降機大堂
Living = Living Room 客廳
Master Bathroom = 主人浴室
Master Bedroom = 主人睡房
Open Air = 露天地方
Open Kitchen = 開放式廚房

PD = Pipe Duct 管道槽
Store = 儲物房
Study Room = 書房
U = Up 上
UP = Utility Platform 工作平台
WMC = Water Meter Cabinet 水錶箱

Floor plans of residential properties in the development

發展項目的住宅物業的樓面平面圖

5/F-12/F, 15/F-23/F & 25/F-30/F (4/F, 13/F, 14/F & 24/F are omitted)
 5樓 - 12樓、15樓 - 23樓、25樓 - 30樓(不設4樓、13樓、14樓及24樓)



Scale 0 1 2 3 4 5M (米)
 比例