

22. 裝置、裝修物料及設備

FITTINGS, FINISHES AND APPLIANCES

c.	廚房 (8/F - 21/F, 23/F - 39/F, 40/F & 42/F, 45樓A及B單位)	裝設木製套裝組合廚櫃及木皮飾面門板配仿石枱面及不銹鋼洗滌盆，配鍍鉻龍頭；另設洗碗碟機、焗爐、咖啡機、中式鑊單爐頭連雙爐頭煤氣煮食爐及電燒烤架、抽油煙機、食物保暖機、電蒸爐、酒櫃、雪櫃及LCD電視機。供水系統的內容請參閱[j. 供水]。隨樓附送之設備及品牌，請參考「設備說明」。
	廚房 (41樓A單位適用)	裝設高光焗漆木製套裝組合廚櫃及高光焗漆飾面門板配合石材枱面、真皮革層板及不銹鋼洗滌盆，配鍍鉻龍頭。另設洗碗碟機、焗爐、咖啡機、中式鑊單爐頭連雙爐頭煤氣煮食爐及電燒烤架、抽油煙機、暖碟機、電蒸爐、雪櫃及酒櫃。供水系統的內容請參閱[j. 供水]。隨樓附送之設備及品牌，請參考「設備說明」。
	廚房 (43樓B單位適用)	裝設鋁製套裝組合廚櫃及金屬門板配玻璃枱面及不銹鋼洗滌盆，配鍍鉻龍頭；另設洗碗碟機、咖啡機、中式鑊單爐頭連雙爐頭煤氣煮食爐及電燒烤架、雪櫃、食物保暖機、電蒸爐及酒櫃。供水系統的內容請參閱[j. 供水]。隨樓附送之設備及品牌，請參考「設備說明」。
	廚房 (46樓A單位適用)	裝設鋁製套裝組合廚櫃及木皮飾面及金屬門板配玻璃枱面及不銹鋼洗滌盆，配鍍鉻龍頭；另設洗碗碟機、焗爐、抽油煙機、咖啡機、中式鑊單爐頭連雙爐頭煤氣煮食爐及電燒烤架、雪櫃、食物保暖機及電蒸爐。供水系統的內容請參閱[j. 供水]。隨樓附送之設備及品牌，請參考「設備說明」。
	廚房 (46樓B單位適用)	裝設高光焗漆飾面木製套裝組合廚櫃，配高光焗漆及真皮革飾面門板，配石材枱面、真皮革層板及不銹鋼洗滌盆，配鍍鉻龍頭；另設洗碗碟機、焗爐、咖啡機、中式鑊單爐頭連雙爐頭煤氣煮食爐、電磁爐、電燒焗架、抽油煙機、食物保暖機、微波蒸爐及雪櫃。供水系統的內容請參閱[j. 供水]。隨樓附送之設備及品牌，請參考[設備說明]。
	睡房	不適用。
e.	電話	客飯廳、睡房，廚房及部份浴室均裝有電話插座。接駁點位置及數目請參考「機電裝置位置及數量說明表」。
f.	天線	客飯廳、睡房及廚房均裝妥電視及收音機天線插位。接駁點位置及數目請參考「機電裝置位置及數量說明表」。
g.	電力裝置	客飯廳、睡房、廚房及浴室均裝有暗藏鋪砌燈掣及插座。導管是部分隱藏及部份外露 ¹ 。每戶提供單相電力並裝妥微型斷路器。電插座及空調機接駁點位置及數目請參考「機電裝置位置及數量說明表」。
h.	氣體供應	各住宅單位均裝妥煤氣喉位至熱水爐及煮食爐，一經申請，即可使用。每戶均裝妥即熱恒溫煤氣熱水爐。煤氣熱水爐位置請參考「機電裝置位置及數量說明表」。
i.	洗衣機接駁點	工作間設有洗衣機來去水接駁喉位。其位置請參考「機電裝置位置及數量說明表」。
j.	供水	冷熱水喉是部分隱藏及部分外露並配有隔熱絕緣保護之銅喉 ² 。廚房或浴室裝有煤氣熱水爐供應廚房及浴室熱水。

備註： 1. 除部分隱藏於混凝土內之導管外，其他部分的導管均為外露。外露的導管可能被假天花、假陣、貯存櫃、覆面、非混凝土間牆、指定之槽位或其他物料遮蓋。

2. 除部分隱藏於混凝土內之水管外，其他部分的水管均為外露。外露的水管可能被假天花、假陣、貯存櫃、覆面、非混凝土間牆、指定之槽位或其他物料遮蓋。

3.2 室內裝置 - 清水房單位包括41樓(亦稱 61樓)B單位及43樓(亦稱 66樓)A單位

a.	門	
	單位大門	沒有
	睡房門	沒有
	浴室門	沒有
	廚房後門	木飾面及防火膠板面木門配木門框，裝配門鎖及防盜眼。
	冷氣機房門	木飾面及防火膠板面木門配木門框，裝配門鎖。
b.	浴室	裝設潔具包括陶瓷洗面盆、陶瓷座廁、鍍鉻龍頭、鍍鉻浴缸龍頭、鋼瓷釉浴缸（1200毫米長 x 700毫米寬 x 400毫米深、1200毫米長 x 700毫米寬 x 335毫米深及1500毫米長 x 700毫米寬 x 400毫米深）。供水系統的內容請參閱[j. 供水]。隨樓附送之設備及品牌，請參考「設備說明」。
	廁所	裝設潔具包括陶瓷洗面盆、陶瓷座廁、鍍鉻面盆龍頭。供水系統的內容請參閱[j. 供水]。隨樓附送之設備及品牌，請參考「設備說明」。
c.	廚房	供水系統的內容請參閱[j. 供水]。隨樓附送之設備及品牌，請參考「設備說明」。
d.	睡房	不適用。
e.	電話	客飯廳、睡房，廚房及浴室（儲物間廁所除外）均裝有電話插座。接駁點位置及數目請參考「機電裝置位置及數量說明表」。
f.	天線	客飯廳、睡房及廚房均裝妥電視及收音機天線插位。接駁點位置及數目請參考「機電裝置位置及數量說明表」。
g.	電力裝置	客飯廳、睡房、廚房及浴室均裝有暗藏鋪砌燈掣及插座。導管是部分隱藏及部份外露 ¹ 。每戶提供單相電力並裝妥微型斷路器。電插座及空調機接駁點位置及數目請參考「機電裝置位置及數量說明表」。
h.	氣體供應	各住宅單位均裝妥煤氣喉位至熱水爐及煮食爐，一經申請，即可使用。每戶均裝妥即熱恒溫煤氣熱水爐。煤氣熱水爐位置請參考「機電裝置位置及數量說明表」。
i.	洗衣機接駁點	廚房均設有洗衣機來去水接駁喉位。其位置請參考「機電裝置位置及數量說明表」。
j.	供水	冷熱水喉是部分隱藏及部分外露並配有隔熱絕緣保護之銅喉 ² 。廚房或浴室裝有煤氣熱水爐供應廚房及浴室熱水。

備註： 1. 除部分隱藏於混凝土內之導管外，其他部分的導管均為外露。外露的導管可能被假天花、假陣、貯存櫃、覆面、非混凝土間牆、指定之槽位或其他物料遮蓋。

2. 除部分隱藏於混凝土內之水管外，其他部分的水管均為外露。外露的水管可能被假天花、假陣、貯存櫃、覆面、非混凝土間牆、指定之槽位或其他物料遮蓋。

4. 雜項

a.	升降機	整座大樓共裝設5部「迅達」升降機，其中3部（產品型號：TX-GC 7050）住宅升降機來往G/F至46/F（亦稱88/F），一部為基座會所升降機（產品型號：MX-GC-5400MRL）來往G/F至7/F，一部電梯（產品型號：MX-GC-5400MRL）來往干德道升降機大堂至G/F。另設2部專用「迅達」升降機（產品型號:MX-GC- 5400MRL）供46/F（亦稱88/F）複式單位之住客來往住宅上、下層及天台。
b.	信箱	各住宅單位均設有木皮面信箱一個，設於地下大堂。
c.	垃圾收集	G/F設有垃圾收集房，每層住宅均由清潔工人定時收集垃圾。
d.	水錶、電錶及氣體錶	每戶於單位冷氣機房內裝有獨立煤氣錶。另每層公用錶房均裝有每戶專用之獨立水、電錶。

5. 保安設施

a.	保安系統	干德道升降機大堂、地下入口大堂、外圍圍牆及會所裝有閉路電視。升降機（位於46/F（亦稱88/F）之專用升降機除外）內設有閉路電視連接物業管理處。住宅單位之客廳及廚房均裝妥彩色視像對講機。主人套房另裝置無線緊急呼喚系統，而大門、後門及露台趟門等位置均裝置防盜門磁系統。
b.	入口通道控制系統	其中兩部住宅電梯更提供八達通讀卡保安操作裝置。干德道升降機大堂及地下入口大堂均設有訪客對講器及八達通讀卡保安操作裝置。

6.1 設備說明 - 標準住宅單位包括8樓至21樓、23樓至39樓、40樓(亦稱60樓)及42樓(亦稱63樓)各單位

設備	適用單位	品牌名稱	產品型號
分體式冷氣機	所有單位	請參閱「冷氣機品牌名稱及產品型號列表」	
VRV冷氣機	所有單位	請參閱「冷氣機品牌名稱及產品型號列表」	
煤氣熱水爐	所有單位	Noritz	NR32DQF
	所有單位	TGC	RJW160TFL, RJW220TFL
	所有單位	SIMPA	STW100TF

設備	適用單位	品牌名稱	產品型號
中式鑊單爐頭連雙爐頭煤氣煮食爐及電燒烤架	所有單位	Miele	CS 1018 G (單爐頭) CS 1013 G (雙爐頭煤氣煮食爐) CS 1312 BG (電燒烤架)
食物保暖機 / 暖碟機	所有單位	Miele	ESW5080-14
抽油煙機	8/F - 21/F 所有單位	Miele	DA 429-4
	23/F - 39/F, 40/F & 42/F (亦稱 60/F & 63/F)各單位	Miele	DA 422-4
電蒸爐	8/F - 21/F 所有單位	Miele	DG 5060
	23/F - 39/F, 40/F & 42/F (亦稱 60/F & 63/F) 各單位	Miele	DG 5080
咖啡機	所有單位	Miele	CVA 5060
雪櫃	8/F - 21/F, 23/F - 39/F 所有單位	Sub-zero	I685S
	40/F & 42/F (亦稱 60/F & 63/F) 所有單位	Sub-zero	I695S
酒櫃	8/F - 21/F 所有單位	Miele	KWT4154 UG-1
	23/F - 39/F, 40/F & 42/F (亦稱 60/F & 63/F) 所有單位	Sub-zero	I430G/S
洗碗碟機	8/F - 21/F 所有單位	Miele	G1222 Sci
	23/F - 39/F, 40/F & 42/F (亦稱 60/F & 63/F) 所有單位	Miele	G1833 Sci
焗爐	8/F - 21/F 所有單位	Miele	H5460 B
	23/F - 39/F, 40/F & 42/F (亦稱 60/F & 63/F) 所有單位	Miele	H5681 B
LCD電視機	所有單位	Samsung	Series 6 LA22B650T6H, EZON-SHT-BT1100M/HK
洗衣機	所有單位	Miele	W 3844 WPS
乾衣機	所有單位	Miele	T 4804 C
抽氣扇	所有單位	Xpelair	DX100 - 90839AW
按摩浴缸	8/F - 21/F 所有單位	Villeroy & Boch	6830
	23/F - 39/F, 40/F & 42/F (亦稱 60/F & 63/F)	Duravit	Starck 710119-003
中央吸塵系統	所有單位	愛斯比	COMPACT 70118

22. 裝置、裝修物料及設備

FITTINGS, FINISHES AND APPLIANCES

6.2 設備說明 - 清水房單位包括41樓(亦稱 61樓)B單位及43樓(亦稱 66樓)A單位

設備	適用單位	品牌名稱	產品型號
LCD 電視機	26樓A單位	Sony	KDL-55HX850, KDL-46HX850
LCD 電視機	27樓B單位	Sony	KDL-60HX720, KDL-46HX850, KDL-32HX750
LCD 電視機	33樓A單位	Sony	KDL-60NX720, KDL-46NX720, KDL-32EX720
LCD 電視機	33樓B單位	Sony	KDL-46HX850, KDL-40HX850
音響系統		B&O	BeoSound 5 Encore, BeoLab 6002, Beo 4
LCD 電視機	35樓B單位	Sony	KDL-46HX850, KDL-40HX850
音響系統		B&O	BeoSound 9000, BeoLab 9, Beo 4
LCD 電視機	38樓B單位	Loewe	Art 37 SL Full HD+

設備	適用單位	品牌名稱	產品型號
分體式冷氣機	所有單位	請參閱「冷氣機品牌名稱及產品型號列表」	
VRV冷氣機	所有單位	請參閱「冷氣機品牌名稱及產品型號列表」	
煤氣熱水爐	所有單位	TGC	RJW160TFL, RJW220TFL
	所有單位	Noritz	NR32DQF
	所有單位	SIMPA	STW100TF
抽氣扇	所有單位	Xpelair	90839AW
中央吸塵系統	所有單位	愛斯比	BOOSTY 703H

6.3 設備說明

41樓(亦稱61樓)A單位

設備	品牌名稱		產品型號
分體式冷氣機	Mitsubishi	室內機	SEZ-KC25VA
			SEZ-KD25VAL.TH
			MSZ-GA35 VA
			MEXZ-KF35VA-S
		室外機	MXZ-4A71 VA
			MXZ-4C71 VA
VRV冷氣機	Daikin	室內機	FXDQ 20 NAVE
			FXDQ 32 NAVE
			FXDQ 40 NAVE
			FXDQ 40 NBVE
		室外機	RXY Q12 PY1
煤氣熱水爐	TGC	RJW160TFL, RJW220TFL	
	Noritz	NR32DQF	
	SIMPA	STW100TF	
中式鑊單爐頭連雙爐頭煤氣煮食爐及電燒烤架	Miele	CS 1018 (單爐頭)	
		CS 1013-1 (雙爐頭煤氣煮食爐)	
		CS 1312 BG (電燒烤架)	
中式爐連抽風系統	Unico	Module A	
食物保暖機	Miele	ESW6214 OBSB	
抽油煙機	Miele	DA3690	
電蒸爐	Miele	DG6800 OBSB	
電焗爐	Miele	DG6890 OBSB	
咖啡機	Miele	CVA 6805 OBSB	
雪櫃	Miele	KF1911VI	
酒櫃	Sensis	-	
洗碗碟機	Miele	G6370 SCVI	
LCD 電視機	Sony	KDL-50W800C	
	Cristal	BKW121	
洗衣機	Miele	W5740	
乾衣機	Miele	T8822C	
抽氣扇	Xpelair	90839AW	
中央吸塵系統	愛斯比	COMPACT 70118	

設備	品牌名稱	產品型號
浴缸連電子掣面	Teuco	3TU-T70MYD
	Kohler	K-856-H2-0, K9698-0, K-7147-AF-CP
音響系統	B&O	Beolab18 Speaker (Rose Gold)
	SpeakerCraft	OE5 One

6.3 設備說明 - 43樓(亦稱66樓)B單位、45樓(亦稱68樓)A及B單位及46樓(亦稱88樓)A單位

43樓(亦稱66樓)B單位

設備	品牌名稱	產品型號
分體式冷氣機	請參閱「冷氣機品牌名稱及產品型號列表」	
VRV冷氣機	請參閱「冷氣機品牌名稱及產品型號列表」	
煤氣熱水爐	TGC	RJW160TFL
	Noritz	NR32DQF
	SIMPA	STW100TF
中式鑊單爐頭連雙爐頭煤氣煮食爐及電燒烤架	Miele	CS 1018 G (單爐頭)
		CS 1013 G (雙爐頭煤氣煮食爐)
		CS 1312 BG (電燒烤架)
食物保暖機	Miele	E SW 5080-29
抽油煙機	Miele	DA 3190
煤氣熱水爐	TGC	RJW160TFL
電蒸爐	Miele	DGC 5080 XL
咖啡機	Miele	CVA 5060
雪櫃	Miele	KF1911 Vi
酒櫃	Isowind	-
洗碗碟機	Miele	G5570SCVi
中式爐連抽風系統	Unico	Module A, H1000
LCD 電視機	Olevia	DWTV 190M
天花喇叭	KEF	CI-50
洗衣機	Miele	W 5740
乾衣機	Miele	T 8822 C
抽氣扇	Xpelair	90839AW
中央吸塵系統	愛斯比	COMPACT 70118
LCD 電視機	Sony	KDL-46NX710
	Cristal	BKW221, BKW191
浴缸連電子掣面	Kohler	K-1153-R-0 Fountainhead, K-176-1SN DTV
花灑連電子掣面	Kohler	K-8034-SN, K-695-1Sn DTV
蒸汽設備	Kohler	K-1708-NA
牆身喇叭	Kohler	K-8033-SN
座廁	Kohler	K-3524-0 Fountainhead
浴缸	Kohler	K-856-AH-0

22. 裝置、裝修物料及設備
FITTINGS, FINISHES AND APPLIANCES

設備	品牌名稱	產品型號
音響系統	B&O	BeoSound 9000, Beo 4 ,BeoCenter 2, Beo 5, BeoLink Passive IR
	SpeakerCraft	5.2R, DT6 Zero

45樓(亦稱68樓)A單位

設備	品牌名稱	產品型號
分體式冷氣機	請參閱「冷氣機品牌名稱及產品型號列表」	
VRV冷氣機	請參閱「冷氣機品牌名稱及產品型號列表」	
煤氣熱水爐	TGC	RJW160TFL
	Noritz	NR32DQF
	SIMPA	STW100TF
中式鑊單爐頭連雙爐頭煤氣煮食爐及電燒烤架	Miele	CS 1018 G (單爐頭)
		CS 1013 G (雙爐頭煤氣煮食爐)
		CS 1312 BG (電燒烤架)
食物保暖機	Miele	E SW 5080-14
抽油煙機	Miele	DA 422-4
煤氣熱水爐	TGC	RJW160TFL
電蒸爐	Miele	DG 5080
咖啡機	Miele	CVA 5060
雪櫃	Sub-zero	I695S
酒櫃	Sub-zero	I430G/S
洗碗碟機	Miele	G 1272 SCVi
焗爐	Miele	H5681 B
微波爐	Miele	M8261-2
中式爐連抽風系統	Unico	Module A, H1000
LCD 電視機	Samsung	Series 6
洗衣機	Miele	W 3844 WPS
乾衣機	Miele	T 4804 C
抽氣扇	Xpelair	90839AW
中央吸塵系統	愛斯比	COMPACT 70118

設備	品牌名稱	產品型號
LCD 電視機	Sony	KDL-46NX720, KDL-55NX720
	Cristal	BKW191, BKW171, BKW154
浴缸連電子掣面	Kohler	K-1365-H2-0, K-527-1CP DTV
花灑連電子掣面	Kohler	K-8034-CP, K-695-1CP DTV
蒸汽設備	Kohler	K-1708-NA
座廁	Kohler	K-3900T-0 Numi
浴缸	Kohler	K-1709-G158-0
音響系統	ReQuest IMS Server	-
	Sonance (Ceiling Speaker)	-
	Electro-Voice (Outdoor Speaker)	EVID 3.2
	Sherwood (FM/Dab/Internet) Radio Tuner	-
	McIntosh	MA6300
	Unison Research	Unico CD Primo
	Sonus Faber	Guarneri Memento
	Wilson Benesch	Full Circle Turntable
	Sherwood (AMP)	-
	Sherwood (Blu-Ray Player)	-
	Definitive Technology (Speaker)	-
	KEF	KUBE-1

45樓(亦稱68樓)B單位

設備	品牌名稱	產品型號
分體式冷氣機	請參閱「冷氣機品牌名稱及產品型號列表」	
VRV冷氣機	請參閱「冷氣機品牌名稱及產品型號列表」	

設備	品牌名稱	產品型號
煤氣熱水爐	TGC	RJW160TFL
	Noritz	NR32DQF
	SIMPA	STW100TF
中式鑊單爐頭連雙爐頭煤氣煮食爐及電燒烤架	Miele	CS 1018 G (單爐頭) CS 1013 G (雙爐頭煤氣煮食爐) CS 1312 BG (電燒烤架)
食物保暖機	Miele	E SW 5080-14
抽油煙機	Miele	DA 422-4
煤氣熱水爐	TGC	RJW160TFL
電蒸爐	Miele	DG 5080
咖啡機	Miele	CVA 5060
雪櫃	Sub-zero	I695S
酒櫃	Sub-zero	I430G/S
洗碗碟機	Miele	G 1272 SCVi
焗爐	Miele	H5681 B
微波爐	Miele	M8261-2
中式爐連抽風系統	Unico	Module A, H1000
LCD 電視機	Samsung	Series 6
洗衣機	Miele	W 3844 WPS
乾衣機	Miele	T 4804 C
抽氣扇	Xpelair	90839AW
中央吸塵系統	愛斯比	COMPACT 70118
LCD 電視機	Sony	KDL-55W800, KDL-47W800
	Cristal	BKW154
	Samsung	EZON-SHT-BT1100M/HK
酒櫃	Sub-zero	ICB424G/S/TH
浴缸	Kohler	K-18354T-G-0
花灑	Bossini	K37451000030016
座廁	Kohler	KC-18608-0, KC-4736-0 C3

設備	品牌名稱	產品型號
音響系統	ReQuest Music Server	-
	Sonance (Ceiling Speaker)	-
	Sherwood (FM/Dab/Internet) Radio Tuner	-
	Meridian	G01, G56, G06.2
	Dali Fazon	F5
	Pro-Ject Turn-Table	-

46樓(亦稱88樓)A單位

設備	品牌名稱	產品型號
分體式冷氣機	請參閱「冷氣機品牌名稱及產品型號列表」	
VRV冷氣機	請參閱「冷氣機品牌名稱及產品型號列表」	
煤氣熱水爐	TGC	RJW160TFL
	Noritz	NR32DQF
	SIMPA	STW100TF
中式鑊單爐頭連雙爐頭煤氣煮食爐及電燒烤架	Miele	CS 1018 G (單爐頭) CS 1013 G (雙爐頭煤氣煮食爐) CS 1312 BG (電燒烤架)
電磁爐(雙爐頭)	Miele	CS 1212 I
食物保暖機	Miele	E SW 5080-29
抽油煙機	Miele	DA 3190, DA 3160
煤氣熱水爐	TGC	RJW160TFL
電蒸爐	Miele	DGC 5080 XL
咖啡機	Miele	CVA 5060
雪櫃	Sub-zero	ICB736TCI-LH, ICB700TCI-RH
	Miele	K121 Ui-1
酒櫃	Sub-zero	ICB427G-RH, ICB427G-LH

22. 裝置、裝修物料及設備 FITTINGS, FINISHES AND APPLIANCES

46樓(亦稱88樓)A單位		
設備	品牌名稱	產品型號
洗碗碟機	Miele	G5570SCVi
焗爐	Miele	H5981 BP
中式爐連抽風系統	Unico	Module A, H1000
洗衣機	Miele	W 5740
乾衣機	Miele	T 8822 C
抽氣扇	Xpelair	90839AW
中央吸塵系統	愛斯比	COMPACT 70118
LCD 電視機	Sony	KDL-46NX720, KDL-55NX720
	Cristal	BKW191, BKW171, BKW154
浴缸	Villeroy & Boch	BQ194AVE9PDV
蒸汽設備	Effegibi	Touch & Steam 30
浴缸	Armani Roca	248200
音響系統	Marantz	AV-7005 & MM-7055
	Cambridge	-
	JVC	DLA-X3 3D Projector
	Avantgarde Acoustic	UNO G2
	Klipsch	RC-64, SW-110
	Sonance (Ceiling Speaker)	-
	ReQuest IMS Server	-
	Crown (AMP)	-
	Electro-Voice (Outdoor Speaker)	EVID 3.2
	Sherwood (FM/Dab/Internet) Radio Tuner	-

46樓(亦稱88樓)B單位			
設備	品牌名稱	產品型號	
分體式冷氣機	三菱	室內機	MSZ-GA35VA, SEZ-KD25VA SEZ-KD35VA, SEZ-KA35VA
		室外機	MXZ-4A71VA, MXZ-4C71VA
VRV冷氣機	大金	室內機	FXDQ40NAVE, FXDQ20NAVE FXDQ40NBVE, FXAQ40NAVE FXAQ20MAVE, FXDQ25PBVE
		室外機	RXYQ12PAY1, RXYQ8PAY1
煤氣熱水爐	TGC	RSW 160 TFL, RJW 220 TFL	
	Noritz	NR32 DQF	
	SIMPA	STW 100 TF	
中式鑊單爐頭連雙爐頭煤氣煮食爐 及電燒焗架	Miele	CS 1028 (單爐頭), CS 1013-1 (雙爐頭煤氣煮食爐) CS 1212-1i (電磁爐), CS1312 BG (電燒焗架)	
食物保暖機	Miele	ESW 6229	
抽油煙機	Miele	DA 3690, FH666	
微波蒸爐	Miele	DG 6800	
焗爐	Miele	H 6890 BP, H 6290 B	
咖啡機	Miele	CVA 6401	
雪櫃	Sub Zero	CBB1-48SID	
洗碗碟機	Miele	G 6470 SCVi	
LCD 電視機	Cristal	CTV 154	
洗衣機	Miele	WKB 120	
乾衣機	Miele	TKB 340 WP	
抽氣扇	Xpelair	DX100 - 90839AW	
中央吸塵系統	愛斯比	COMPACT 70118	
浴缸	KALLISTA	P50035-H2-0	
	Villeroy & Boch	Squaro Edge 12	
音響系統	Denon	AVR-X1300W Atmos Surround Receiver	
	Maratnz	M-CR611	
	Linn	Sneaky Digital Stream Player	
	Qnap	TS-121 NAS	
	Sony	KDL-49X7000D 49" iDTV, BDP-S1500 Blu Ray Player, BDP-S6500 Blu Ray Player	
	SpeakerCraft	DT7, Profile CRS6	
	Cristal	15" iDTV	

賣方承諾如該項目中沒有安裝指明的品牌名稱或產品型號的升降機或設備，便會安裝品質相若的升降機或設備。

1. Exterior Finishes		
a.	External wall	Curtain wall and aluminium panels are used on the front external wall of all residential master bedrooms and living and dining rooms. Curtain wall, aluminium panels and stone are used on the external wall of the podium. Wall tiles are used on other parts of the external wall (bathroom, kitchen, store, utility room and lavatory).
b.	Window	Aluminium window frame with fluorocarbon finish and glass are installed in all residential units.
c.	Bay window	The material of bay windows is reinforced concrete installed with fluorocarbon-coated aluminium window frame fitted with clear glazing. Stone window sill boards are installed.
	Bay window (Unit A on 26/F and Unit B on 45/F only)	The material of bay windows is reinforced concrete installed with fluorocarbon-coated aluminium window frame fitted with clear glazing. Stone and vinyl window sill boards are installed.
	Bay window (Unit B on 38/F only)	The material of bay windows is reinforced concrete installed with fluorocarbon-coated aluminium window frame fitted with clear glazing. Stone, stainless steel and wood veneer window sill boards are installed.
d.	Planter	Nil
	Planter (Unit A on 45/F only)	Planters are finished with stone.
e.	Verandah or balcony (No cover and ceiling for balcony of Unit B on 46/F)	(i) Floors of balcony are finished with stone. Ceiling finished with emulsion paint on cement and sand plaster. Glass balustrade with aluminium cladding is installed. (ii) Balcony is covered. (iii) No verandah is provided.
f.	Drying facilities for clothing	Nil

2. Interior Finishes		
a.	Lift lobby	
	Shuttle lift lobby at Conduit Road	Floor is finished with stone. Internal wall decorated with stone and glass art panels. Gypsum board false ceiling is provided.
	G/F main lobby	Floor is finished with stone. Internal wall decorated with stone and medium density fibre board art panels. Gypsum board false ceiling is provided.
	Common lift lobby	Floor is finished with stone. Internal wall decorated with stone and plastic laminate. Gypsum board false ceiling is provided.
	Private residential lift lobby	Floor is finished with stone. Internal wall decorated with stone and glass panels. Gypsum board false ceiling is provided.
	Private residential lift lobby (Unit A on 26/F only)	Floor is finished with stone. Internal wall decorated with wood veneer, stainless steel, leather and mirror. Plywood false ceiling decorated with stainless steel is provided.
	Private residential lift lobby (Unit B on 27/F only)	Floor is finished with stone. Internal wall decorated with stone, wood veneer, stainless steel, mirror and glass. Gypsum board false ceiling is provided.
	Private residential lift lobby (Unit A on 33/F only)	Floor is finished with stone. Internal wall decorated with stone, wood veneer and mirror. Gypsum board false ceiling is provided.
	Private residential lift lobby (Unit B on 33/F only)	Floor is finished with stone. Internal wall decorated with glass, stainless steel and wood veneer. Gypsum board false ceiling is provided.
	Private residential lift lobby (Unit B on 35/F only)	Floor is finished with stone. Internal wall decorated with wood veneer, mirror, vinyl and stainless steel. Gypsum board false ceiling is provided.
	Private residential lift lobby (Unit B on 38/F only)	Floor is finished with stone. Internal wall decorated with stone. Gypsum board with glass false ceiling is provided.
	Private residential lift lobby (Unit A on 41/F only)	Floor is finished with stone. Interior wall decorated with stone, mirror and stainless steel strips. Gypsum board false ceiling is provided.
	Private residential lift lobby (Unit B on 43/F only)	Floor is finished with stone. Internal wall decorated with wood, mirror, stainless steel strips and stone portal. Gypsum board false ceiling is provided.
	Private residential lift lobby (Unit A on 45/F only)	Floor is finished with stone. Internal wall decorated with mirror and stone. Gypsum board false ceiling is provided.
	Private residential lift lobby (Unit B on 45/F only)	Floor is finished with stone. Internal wall decorated with wood veneer and mirror. Gypsum board false ceiling is provided.
	Private residential lift lobby (Unit A on 46/F only)	Floor is finished with stone. Internal wall decorated with vinyl, stone, wood veneer, stainless steel and mirror. Gypsum board false ceiling is provided.
	Private residential lift lobby (Unit B on 46/F only)	Floor is finished with stone. Interior wall decorated with stone, mirror and stainless steel strips. Gypsum board false ceiling and mirror finish is provided.

22. 裝置、裝修物料及設備

FITTINGS, FINISHES AND APPLIANCES

b.	Internal wall and ceiling	Walls at living room, dining room and bedrooms are finished with emulsion paint on cement and sand plaster. The inner face of precast facade are finished with emulsion paint on skim coat. Ceilings are finished with emulsion paint on skim coat.
	Internal wall and ceiling (Unit A on 26/F only)	Walls at living room, dining room and bedrooms are finished with wood veneer, glass, mirror, stone, stainless steel, wall paper and painting. Ceilings are finished with emulsion paint on skim coat.
	Internal wall and ceiling (Unit B on 27/F only)	Walls at living room, dining room and bedrooms are finished with wood veneer, fabric, glass, mirror, stone, stainless steel, painting, leather and vinyl. Ceilings are finished with emulsion paint on skim coat.
	Internal wall and ceiling (Unit A on 33/F only)	Walls at living room, dining room and bedrooms are finished with wood veneer, fabric, glass, mirror, stainless steel, wall paper, painting, leather and vinyl. Ceilings are finished with emulsion paint on skim coat.
	Internal wall and ceiling (Unit B on 33/F only)	Walls at living room, dining room and bedrooms are finished with wood veneer, vinyl, fabric, mirror, mother of pearl, wall paper, stainless steel, glass and painting. Ceilings are finished with emulsion paint on skim coat.
	Internal wall and ceiling (Unit B on 35/F only)	Walls at living room, dining room and bedrooms are finished with wall paper, vinyl, wood veneer, stone, stainless steel, mirror, glass, fabric and painting. Ceilings are finished with emulsion paint on skim coat.
	Internal wall and ceiling (Unit B on 38/F only)	Walls at living room, dining room and bedrooms are finished with stone, wood veneer, vinyl, fabric, leather, glass, wall paper, stainless steel and painting. Ceilings are finished with emulsion paint on skim coat.
	Internal wall and ceiling (Unit A on 41/F only)	Walls at living room, dining room and bedrooms are finished with powder coated wall panel, fabric, glass, mirror, stainless steel, stone, wallpaper and vinyl. Ceilings are finished with emulsion paint and gold-leaf on skim coat.
	Internal wall and ceiling (Unit B on 43/F only)	Walls at living room, dining room and bedrooms are finished with wood veneer, glass, mirror, stone, stainless steel, wall paper and vinyl. Ceilings are finished with emulsion paint on skim coat.
	Internal wall and ceiling (Unit A on 45/F only)	Walls at living room, dining room and bedrooms are finished with painted wood panels, wall paper, mirror and fabric panels. Ceilings are finished with emulsion paint on skim coat.
	Internal wall and ceiling (Unit B on 45/F only)	Walls at living room, dining room and bedrooms are finished with wood veneer, glass, mirror, stone, wall paper, painting and vinyl. Ceilings are finished with emulsion paint on skim coat.
	Internal wall and ceiling (Unit A on 46/F only)	Walls at living room, dining room and bedrooms are finished with wood veneer, glass, mirror, stone, stainless steel, wall paper, vinyl, fabric and leather. Ceilings are finished with emulsion paint on skim coat.
	Internal wall and ceiling (Unit B on 46/F only)	Walls at living room, dining room and bedrooms are finished with lacquer wall panels, fabric, glass, mirror, stainless steel, stone, wallpaper, vinyl and leather. Ceilings are finished with emulsion paint on skim coat and silver-leaf.
	Internal floor	Engineered wood flooring with wood skirting is installed in all bedrooms, living room and dining room.
	Internal floor (Unit A on 26/F only)	Stone and engineered wood flooring with no skirting are installed in living room and dining room. Engineered wood flooring with no skirting is installed in all bedrooms.
	Internal floor (Unit B on 27/F only)	Stone flooring with stainless steel skirting in living room and dining room. Carpet flooring with stainless steel skirting in bedrooms.

c.	Internal floor (Unit A on 33/F only)	Stone flooring with stainless steel skirting in living room and dining room. Carpet flooring with stainless steel skirting in bedrooms.
	Internal floor (Unit B on 33/F only)	Stone flooring with stainless steel skirting in living room and dining room. Carpet flooring with stainless steel skirting in bedrooms.
	Internal floor (Unit B on 35/F only)	Stone flooring with stainless steel skirting in living room and dining room. Carpet flooring with stainless steel skirting in bedrooms.
	Internal floor (Unit B on 38/F only)	Stone and engineered wood flooring are installed in living room and dining room with no skirting is provided. Engineered wood flooring is installed in bedrooms 1, 2 & 3 with no skirting is provided. Carpet flooring is installed in master bedroom with no skirting is provided.
	Internal floor (Unit A on 41/F only)	Stone flooring are installed in living room, dining room and bedroom 4 with powder coated skirting provided. Engineered wood flooring with powder coated skirting are installed in Bedrooms 1, 2 & 3. Carpet flooring is installed in master bedroom with powder coated skirting provided. Homogeneous tiles are installed in Utility Room.
	Internal floor (Unit B on 43/F only)	Stone flooring with no skirting is installed in living room and dining room. Carpet flooring with stainless steel skirting are installed in master bedroom and bedrooms1, 2 & 3, stone flooring with stainless steel skirting is installed in bedroom 4.
	Internal floor (Unit A on 45/F only)	Stone flooring with painted wood skirting are installed in living room and dining room. Carpet flooring with wood skirting is installed in all bedrooms.
	Internal floor (Unit B on 45/F only)	Stone flooring with no skirting are installed in living room and dining room. Engineered wood floorings with no skirting is installed in all bedrooms.
	Internal floor (Unit A on 46/F only)	Stone flooring and wood skirting are installed in living room and dining room. Carpet flooring and wood skirting are installed in all bedrooms.
	Internal floor (Unit B on 46/F only)	Stone flooring is installed in living room and dining room with lacquer skirting. Engineered wood flooring with lacquer skirting is installed in Bedrooms 2 & 4. Carpet flooring with lacquer skirting is installed in Master bedroom and Bedroom 1.
d.	Bathroom	Floor is finished with stone and walls are finished with stone (for exposed surface only) up to the line of gypsum board false ceiling.
	Unit A on 41/F only	(also known as Unit A on 61/F)
	Master bathroom	Floor is finished with stone, mother of pearl and walls are finished with stone and mirror (for exposed surface only) up to the line of gypsum board false ceiling.
	Bathroom 1	Floor is finished with stone and walls are finished with stone (for exposed surface only) up to the line of gypsum board false ceiling.
	Bathroom 2	Floor is finished with stone and walls are finished with stone (for exposed surface only) up to the line of gypsum board false ceiling.
	Bathroom 3	Floor is finished with stone and walls are finished with stone and mirror (for exposed surface only) up to the line of gypsum board false ceiling.
	Bathroom 4	Floor is finished with stone and walls are finished with wallpaper and stone (for exposed surface only) up to the line of gypsum board false ceiling.

d.	Unit A on 45/F only	(also known as Unit A on 68/F)
	Master bathroom	Floor is finished with stone and walls are finished with stone (for exposed surface only) and mirror up to the line of gypsum board false ceiling.
	Bathroom 1	Floor is finished with stone and walls are finished with stone (for exposed surface only) and mirror up to the line of gypsum board false ceiling.
	Bathroom 2	Floor is finished with stone and walls are finished with stone (for exposed surface only) up to the line of gypsum board false ceiling.
	Bathroom 3	Floor is finished with stone and walls are finished with stone (for exposed surface only) up to the line of gypsum board false ceiling.
	Master bathroom (Unit B on 45/F only)	Floor is finished with stone and walls are finished with wood veneer, glass, stainless steel, stone, vinyl and mirror (for exposed surface only) up to the line of gypsum board false ceiling.
	Unit A on 46/F only	(also known as Unit A on 88/F)
	Master bathroom	Floor is finished with stone and walls are finished with stone (for exposed surface only) and mirror up to the line of gypsum board false ceiling.
	Bathroom 1	Floor is finished with stone and walls are finished with stone (for exposed surface only) up to the line of gypsum board false ceiling.
	Bathroom 2	Floor is finished with stone and walls are finished with stone, mirror and vinyl (for exposed surface only) up to the line of gypsum board false ceiling.
e.	Bathroom 3	Floor is finished with stone and walls are finished with stone (for exposed surface only) up to the line of gypsum board false ceiling.
	Master bathroom, Bathrooms 1 & 4 (Unit B on 46/F only)	Floor is finished with stone and walls are finished with stone (for exposed surface only) up to the line of gypsum board false ceiling.
	Kitchen	Floor is finished with stone and walls finished with stone (for exposed surface only) up to the line of gypsum board false ceiling. Cooking bench is fitted with formica stone.
	Kitchen (Unit A on 41/F only)	Floor is finished with stone and walls are finished with stone, mirror, wallpaper, stainless steel, gold-leaf and wall fabric finish (for exposed surface only) up to the line of gypsum board false ceiling with powder coated skirting are installed. Cooking bench is fitted with stone.
	Kitchen (Unit B on 43/F only)	Floor is finished with stone and walls finished with stone, vinyl, glass and wood veneer (for exposed surface only) up to the line of gypsum board false ceiling. Cooking bench is fitted with glass.
	Kitchen (Unit A on 46/F only)	Floor is finished with stone and walls finished with stone (for exposed surface only) up to the line of gypsum board false ceiling. Cooking bench is fitted with glass.
	Kitchen (Unit B on 46/F only)	Floor is finished with stone and walls are finished with stone (for exposed surface only) up to the line of gypsum board false ceiling. Cooking bench is fitted with stone.

3.1 Interior Fittings

a.	Doors	
	Main entrance door	Timber door with wood veneer, timber frame, door lock and viewer is installed.
	Private lift lobby back door	Timber door with wood veneer, plastic laminate, timber frame, door lock and viewer is installed.
	Bedroom door	Timber door with timber frame and door lock is installed.
	Bathroom door (8/F -21/F)	Timber door with timber frame and door lock is installed.
	Bathroom door (23/F - 39/F, 40/F & 42/F)	Timber door with timber frame and door lock is installed. Timber door with stainless steel frame and door lock is installed in master bathroom.
	Kitchen door	Timber door with wood veneer, timber frame and door lock is installed.
	Kitchen back door	Timber door with wood veneer, plastic laminate, timber frame, door lock and viewer is installed.
	Utility room door	Timber door with timber frame and door lock is installed.
	Store room door	Timber door with timber frame and door lock is installed.
	Store room back door (8/F only)	Aluminium framed glass swing door with door lock is installed.
	Air-conditioning room door	Timber door with wood veneer, plastic laminate, timber frame and door lock is installed.
	Unit A on 26/F only	
	Main entrance door	Timber door with wood veneer, timber frame, door lock and viewer is installed.
	Common lift lobby door	Timber door with wood veneer, timber frame and door lock is installed.
	Master bedroom, bedroom 1 and 3 door	Timber door with wood veneer, timber frame and door lock is installed.
	Bedroom 2 door	Glass door is installed.
	Bathroom 1 door	Timber sliding door with timber frame and door lock is installed.
	Bathroom 2 door	Timber door with wood veneer, timber frame and door lock is installed.
	Master walk-in closet door	Timber door with wood veneer, timber frame and door lock is installed.
	Master bathroom door	Timber sliding door with wood veneer, timber frame and door lock is installed.
	Kitchen door	Timber door with wood veneer, timber frame is installed at front entrance; timber door with wood veneer, timber frame, door lock and viewer is installed at back entrance.
	Utility room door	Timber door with timber frame is installed.
	Store room door	Timber door with timber frame and door lock is installed.
	Unit B on 27/F only	
	Main entrance door	Timber door with paint, stainless steel, timber frame, door lock is installed.
	Common lift lobby door	Timber door with mirror, timber frame and door lock is installed.
	Bedroom door (except bedroom 2)	Timber door with paint, stainless steel, timber frame and door lock is installed.
	Bedroom 2 door	Glass sliding door with stainless steel frame is installed.
	Bathroom 1 door	Timber door with paint, stainless steel and fabric, timber frame and door lock is installed.

22. 裝置、裝修物料及設備
FITTINGS, FINISHES AND APPLIANCES

a.	Bathroom 2 door	Timber door with paint and stainless steel, timber frame and door lock is installed.
	Master walk-in closet door	Timber door with paint and stainless steel, timber frame is installed.
	Master bathroom door	Mirror sliding door, stainless steel frame and door lock is installed.
	Kitchen door	Timber door with paint, stainless steel, glass, timber frame and door lock is installed at front entrance; timber door with wood veneer, plastic laminate, timber frame, door lock and viewer is installed at back entrance.
	Utility room door	Timber door with timber frame and door lock is installed.
	Store room door	Timber door with timber frame and door lock is installed.
	Unit A on 33/F only	
	Main entrance door	Timber door with wood veneer, leather, stainless steel frame, door lock is installed.
	Common lift lobby door	Timber door with wood veneer, glass, stainless steel, timber frame and door lock is installed.
	Bedroom door (except bedroom 3)	Timber door with wood veneer, timber frame and door lock is installed.
	Bedoom 3 door	Glass door, stainless steel frame is installed.
	Bathroom 1 door	Timber door with wood veneer, timber frame and door lock is installed.
	Bathroom 2 door	Timber door with wood veneer, wall covering, timber frame and door lock is installed.
	Master walk-in closet door	Timber sliding door with mirror, artwork on canvas, stainless steel frame is installed.
	Master bathroom door	Timber door with wood veneer, stainless steel frame is installed.
	Kitchen door	Timber door with wood veneer, mirror, artwork on canvas, stainless steel frame is installed at front entrance; timber door with wood veneer, plastic laminate, timber frame, door lock and viewer is installed at back entrance.
	Utility room door	Timber door with timber frame and door lock is installed.
	Store room door	Timber door with timber frame and door lock is installed.
	Unit B on 33/F only	
	Main entrance door	Timber door with wood veneer, stainless steel and vinyl, timber frame and door lock is installed.
	Common lift lobby door	Timber door with wood veneer, mirror, stainless steel, timber frame and door lock is installed.
	Bedroom door (except bedroom 3)	Timber door with wood veneer and vinyl, stainless steel frame and door lock is installed.
	Bedroom 3 door	Glass sliding door with stainless steel frame is installed.
	Bathroom 1 door	Timber door with wood veneer, stainless steel frame and door lock is installed.
	Bathroom 2 door	Timber door with wood veneer, vinyl, stainless steel frame and door lock is installed.
	Master walk-in closet door	Timber door with wood veneer, stainless steel frame and door lock is installed.
	Master bathroom door	Timber door with mirror and stainless steel. Stainless steel frame is installed.

a.	Kitchen door	Timber door with wood veneer, stainless steel frame is installed at front entrance with door lock; timber door with timber frame, wood veneer, plastic laminate, door lock and viewer is installed at back entrance.
	Utility room door	Timber door with timber frame and door lock is installed.
	Store room door	Timber door with timber frame and door lock is installed.
	Unit B on 35/F only	
	Main entrance door	Timber door with wood veneer, timber frame and door lock is installed.
	Common lift lobby door	Timber door with wood veneer and stainless steel, timber frame and pull-handle is installed.
	Bedroom door (except bedroom 3)	Timber door with wood veneer and stainless steel, timber frame and door lock is installed.
	Bedroom 3 door	Glass sliding door. Stainless steel frame is installed.
	Bathroom 1 door	Timber door with wood veneer, vinyl, stainless steel, timber frame and door lock is installed.
	Bathroom 2 door	Timber door with wood veneer and stainless steel, timber frame and door lock is installed.
	Master walk-in closet door	Glass sliding door. Stainless steel frame is installed.
	Master bathroom door	Timber door with mirror, stainless steel frame is installed.
	Kitchen door	Timber door with wood veneer, vinyl, stainless steel, timber frame is installed at front entrance with door lock; timber door with wood veneer, plastic laminate, timber frame, door lock and viewer is installed at back entrance.
	Utility room door	Timber door with timber frame and door lock is installed.
	Store room door	Timber door with timber frame and door lock is installed.
	Unit B on 38/F only	
	Main entrance door	Timber door with vinyl, stainless steel frame and door lock and viewer is installed.
	Common lift lobby door	Timber door with leather, timber frame and door lock is installed.
	Bedroom door	Timber door with wood veneer, timber frame and door lock is installed.
	Bathroom 1 door	Glass sliding door. Stainless steel frame is installed.
	Bathroom 2 door	Timber door with wood veneer, timber frame and door lock is installed.
	Master bathroom door	Timber sliding door with wood veneer is installed.
	Kitchen door	Glass door with stainless steel frame is installed at front entrance; timber door with wood veneer, plastic laminate, timber frame and door lock is installed at back entrance.
	Utility room door	Glass door with stainless steel frame is installed
	Unit A on 41/F only	(also known as Unit A on 61/F)
	Main entrance door	Powder coated timber door with wall fabric finish, powder coated timber frame and door lock is installed.
	Bedroom 1,2 and 3 door	Powder coated timber door and door frame, door lock is installed.
	Master walk-in closet door	Powder coated timber door with mother of pearl and stainless steel strips and powder coated door frame.
	Bedroom 1 walk-in closet door	Powder coated timber door with tempered glass and powder coated door frame.

a.	Bathroom 4 door	Timber door with mirror and stainless steel finish with powder coated door frame and door lock installed.
	Kitchen door	Powder coated timber door with glass, stainless steel finish, stone door frame.
	Utility room door	Powder coated timber door with mirror finish, powder coated frame and door lock is installed.
	Kitchen staircase door	Timber door with mirror finish, powder coated frame and door lock is installed.
	Kitchen back door	Timber door with mirror finish, powder coated frame and door lock is installed.
	Store room door	Timber door with mirror finish, powder coated frame and door lock is installed.
	Bathroom 1,2 and 3 door	Powder coated timber door with frame and door lock is installed.
	Unit B on 43/F only	(also known as Unit B on 66/F)
	Main entrance door	Timber door with wood veneer, timber frame and door lock is installed.
	Common lift lobby door	Timber door with wood veneer and mirror, timber frame and door lock is installed.
	Bedroom door (except bedroom 4)	Timber door with timber frame and door lock is installed.
	Bedroom 4	Nil
	Master bathroom door	Timber door with timber frame and door lock is installed.
	Bathroom 2, 3 & 4 door	Timber door with wood veneer and vinyl, timber frame and door lock is installed.
	Bathroom 1 door	Timber sliding door with mirror and stainless steel and stainless steel frame is installed.
	Master and bedroom 1 walk-in closet door	Timber door with glass, timber frame is installed.
	Kitchen door	Glass door with steel edge, stainless steel frame is installed at front entrance; timber door with timber door frame, wood veneer, glass, door lock and viewer is installed at back entrance.
	Utility room door	Timber door with timber frame and door lock is installed.
	Lavatory door	Timber door with timber frame and door lock is installed.
	Unit A on 45/F only	(also known as Unit A on 68/F)
	Main entrance door	Painted timber door with painted timber frame, door lock is installed.
	Common lift lobby door	Painted timber door with timber frame and door lock is installed.
	Dining room 2 door	Painted timber and glass sliding door, painted timber frame is installed.
	Bedroom and AV room door	Painted timber door with painted timber frame and door lock is installed.
	Bathroom and lavatory door (except lavatory 2 door)	Painted timber door with painted timber frame and door lock is installed.
	Master walk-in closet door	Painted timber door with glass, painted timber frame and door lock is installed.
	Lavatory 2 door	Timber door with timber frame and door lock is installed.
	Kitchen door	Painted timber door with painted timber frame and door lock is installed at front entrance; timber door with wood veneer, timber frame, door lock and viewer are installed at back entrance.
	Utility room door	Timber door with timber frame and door lock is installed.

a.	Unit B on 45/F only	(also known as Unit B on 68/F)
	Main entrance door	Timber door with wood veneer, timber frame and door lock is installed.
	Common lift lobby door	Timber door with wood veneer, timber frame and door lock is installed.
	Dining room door	Glass sliding door with stainless steel frame is installed.
	Master bathroom door	Timber and bronze-colour stainless steel sliding door with leather finishes.
	Bedroom door	Timber door with timber frame and door lock is installed.
	Bathroom 1	Timber sliding door with timber frame.
	Bathroom door (except master bathroom and bathroom 1)	Timber door with timber frame and door lock is installed.
	Kitchen door	Timber door with wood veneer, timber frame and door lock is installed at front entrance; timber door with wood veneer, plastic laminate, timber frame, door lock and viewer is installed at back entrance.
	Utility room door	Timber door with timber frame and door lock is installed.
	Store room door	Timber door with timber frame and door lock is installed.
	Unit A on 46/F only	(also known as Unit A on 88/F)
	Main entrance door	Timber door with wood veneer, timber frame, door lock is installed.
	Common lift lobby door	Timber door with wood veneer, timber frame, door lock is installed.
	Study room door	Timber sliding door with wood veneer, stainless steel handle and timber frame.
	Master bedroom, bedroom 1, 2, 3 & AV room door	Timber door with wood veneer, vinyl and timber frame, door lock is installed.
	Master walk-in closet door	Glass door with stainless steel edge, timber frame is installed.
	Master bathroom door	Timber door with wood veneer, vinyl and timber frame, door lock is installed.
	Bathroom 1 door	Timber door with mirror, wood veneer, vinyl and timber frame, door lock is installed.
	Bedroom 2 walk-in closet door	Glass door with stainless steel edge, vinyl and stainless steel frame is installed.
	Bathroom 2 door	Timber door with wood veneer, vinyl, timber frame and door lock is installed.
	Bathroom 3 door	Glass front door with stainless steel frame; internal sliding timber door with stainless steel frame is installed.
	Lavatory 2 door	Timber door with timber frame and door lock is installed.
	Lavatory 1 door	Timber door finished with fabric with timber frame and door lock is installed.
	Kitchen door	Glass door with stainless steel edge, timber frame is installed at front entrance; timber door with wood veneer and timber frame is installed at back entrance.
	Kitchen internal door	Glass door with stainless steel edge is installed.
	Pantry door	Glass sliding door with stainless steel edge is installed.
	Kitchen staircase door	Glass door with stainless steel edge is installed.
	Utility room door	Timber front and back door with timber frame and door lock is installed.
	Store room door	Timber door with timber frame and door lock is installed.

22. 裝置、裝修物料及設備
FITTINGS, FINISHES AND APPLIANCES

a.	Unit B on 46/F only	(also known as Unit B on 88/F)
	Main entrance door	Lacquer timber door with lacquer timber frame and door lock is installed.
	Common lift lobby door	Lacquer timber door with lacquer timber frame and door lock is installed.
	Study room door	Lacquer timber sliding door finished with acid etched glass and lacquer timber door frame and door lock is installed.
	Master bedroom door	Lacquer timber door with lacquer timber frame and door lock is installed.
	Master bedroom walk-in closet door	Lacquer timber door with lacquer timber frame and door lock is installed.
	Bedroom 1 walk-in closet door	Lacquer timber sliding door finished with clear glass and lacquer timber door frame and door lock is installed.
	Master bathroom, bedroom 1, bedroom 1 bathroom, bedroom 2, bedroom 4, bedroom 4 bathroom, lavatory 1 door	Lacquer timber door with lacquer timber frame and door lock is installed.
	Lavatory 2 door	Plastic laminated timber door with lacquer timber frame and door lock is installed.
	Kitchen door	Lacquer timber sliding door finished with glass, lacquer timber door frame and door lock is installed.
	Store 1 door	Concealed door finished with fabric and door lock is installed.
	Utility room 1, utility room 2 front & back door	Lacquer timber door with lacquer timber frame and door lock is installed.
	Roof door	Aluminum door finished with glass, aluminum frame and door lock is installed.

b.	Bathroom (8/F -21/F) (except store toilet)	Fitted with corian wash basin, ceramic water closet, chrome-plated basin mixer, steel enamel bathtub (1800 mm (L) x 800 mm (W) x 450 mm (D)) (Jacuzzi bathtub provided inside the master bathroom), chrome-plated bathtub mixer, chrome-plated shower set (for master bathroom only). Wash basin cabinet finished with wood veneer and mirror is installed. Other fittings including chrome-plated towel bar, chrome-plated toilet paper holder and LCD bathroom TV are provided. For the details of the water supply system, please refer to "j. Water supply". For the appliances provision and brand names, please refer to the "Appliances Schedule".
	Bathroom (23/F - 39/F, 40/F & 42/F, except unit B on 38/F) (except store toilet)	Fitted with corian wash basin with chrome-plated basin mixer, ceramic water closet, acrylic Jacuzzi bathtub (1800 mm (L) x 900 mm (W) x 485 mm (D)) with chrome-plated bathtub mixer and chrome-plated shower set, timber and stone cabinet with stone counter-top and mirror are installed at the master bathroom. Sanitary wares including corian wash basin with chrome-plated basin mixer, ceramic water closet and chrome-plated shower set, timber and stone cabinet with stone counter-top and mirror are installed at Bathroom 1. Sanitary wares including corian wash basin with chrome-plated basin mixer, ceramic water closet, steel enamel bathtub (1800 mm (L) x 800 mm (W) x 450 mm (D)) with chrome-plated bathtub mixer, timber and stone cabinet with stone counter-top and mirror are installed at Bathroom 2. Other fittings and accessories including chrome-plated towel bar, chrome-plated toilet paper holder and LCD bathroom TV are provided. For the details of the water supply system, please refer to "j. Water supply".For the appliances provision and brand names, please refer to the "Appliances Schedule".
	Bathroom (unit B on 38/F) (except store toilet)	Fitted with corian wash basin with chrome-plated basin mixer, ceramic water closet, acrylic Jacuzzi bathtub (1800 mm (L) x 900 mm (W) x 485 mm (D)) with chrome-plated bathtub mixer and chrome-plated shower set, timber cabinet with stone counter-top and mirror are installed at the master bathroom. Sanitary wares including corian wash basin with chrome-plated basin mixer, ceramic water closet and chrome-plated shower set, timber and stone cabinet with stone counter-top and mirror are installed at Bathroom 1. Sanitary wares including ceramic wash basin with chrome-plated basin mixer, ceramic water closet, steel enamel bathtub (1800 mm (L) x 800 mm (W) x 450 mm (D)) with chrome-plated bathtub mixer, timber cabinet with stone counter-top and mirror are installed at Bathroom 2. Other fittings and accessories including chrome-plated towel bar, chrome-plated toilet paper holder and LCD bathroom TV are provided. For the details of the water supply system, please refer to "j. Water supply". For the appliances provision and brand names, please refer to the "Appliances Schedule".

b.	Unit A on 41/F only	(also known as Unit A on 61/F)
	Master bathroom	Fitted with glazed steel wash basin with chrome-plated basin mixer, ceramic water closet, acrylic-based composite Jacuzzi bathtub (1880mm(L) x 800mm(W) x 450mm(D)) with chrome-plated bathtub mixer, and chrome-plated shower set, powder coated timber cabinet with stone counter top and mirror are installed at the master bedroom. Other fittings and accessories including chrome-plated towel bar and LCD bathroom TV are provided. For the details of the water supply system, please refer to "j. Water Supply". For the appliances provision and brand names, please refer to the "Appliances Schedule".
	Bathroom 1	Fitted with ceramic wash basin with chrome-plated basin mixer, ceramic water closet, cast iron Jacuzzi bathtub (1676mm(L) x 914mm(W) x 610mm(D)) with chrome-plated bathtub mixer and chrome-plated shower set. Powder coated timber cabinet with stone counter-top and mirror are installed. Other fittings and accessories including chrome-plated towel bar and LCD bathroom TV are provided. For the details of the water supply system, please refer to "j. Water Supply". For the appliances provision and brand names, please refer to the "Appliances Schedule".
	Bathroom 2	Fitted with ceramic wash basin with chrome-plated basin mixer, ceramic water closet, Quarryl® bathtub (1700mm(L) x 750mm(W) x 450mm(D)) with chrome-plated bathtub mixer and shower set. Other fittings and accessories including chrome-plated towel bar and LCD bathroom TV are provided. For the details of the water supply system, please refer to "j. Water Supply". For the appliances provision and brand names, please refer to the "Appliances Schedule".
	Bathroom 3	Fitted with ceramic wash basin with chrome-plated basin mixer, ceramic water closet, chrome plated shower mixer, powder coated timber cabinet with stone counter-top and mirror. Other fittings and accessories including chrome-plated towel bar and LCD bathroom TV are provided. For the details of the water supply system, please refer to "j. Water Supply". For the appliances provision and brand names, please refer to the "Appliances Schedule".
	Bathroom 4	Fitted with glass wash basin with chrome-plated basin mixer, ceramic water closet, powder coated timber cabinet with stone counter-top and mirror. Other fittings and accessories including chrome-plated towel bar and LCD bathroom TV are provided. For the details of the water supply system, please refer to "j. Water Supply". For the appliances provision and brand names, please refer to the "Appliances Schedule".
	Unit B on 43/F only	(also known as Unit B on 66/F)
	Master bathroom	Fitted with ceramic wash basin with chrome-plated basin mixer, ceramic water closet, acrylic Jacuzzi bathtub (1830 mm (L) x 1070 mm (W) x 660 mm (H)) with chrome-plated bathtub mixer, chrome-plated shower set, timber cabinet with stone counter-top and mirror. Other fittings and accessories including chrome-plated towel bar and LCD bathroom TV are provided. For the details of the water supply system, please refer to "j. Water supply". For the appliances provision and brand names, please refer to the "Appliances Schedule".

b.	Bathroom 1	Fitted with ceramic wash basin with chrome-plated basin mixer, ceramic water closet, cast iron Jacuzzi bathtub (1680 mm (L) x 915 mm (W) x 610 mm (H)) with chrome-plated bathtub mixer and chrome-plated shower set, timber and stone cabinet with stone counter-top and mirror. Other fittings and accessories including chrome-plated towel bar and LCD bathroom TV are provided. For the details of the water supply system, please refer to "j. Water supply". For the appliances provision and brand names, please refer to the "Appliances Schedule".
	Bathroom 2 and 3	Fitted with ceramic wash basin with chrome-plated basin mixer, ceramic water closet, cast iron bathtub (1520 mm (L) x 810 mm (W) x 460mm (H)) with chrome-plated bathtub mixer, timber and stone cabinet with stone counter-top and mirror. Other fittings and accessories including chrome-plated towel bar is provided. For the details of the water supply system, please refer to "j. Water supply". For the appliances provision and brand names, please refer to the "Appliances Schedule".
	Bathroom 4	Fitted with glass wash basin with chrome-plated basin mixer, ceramic water closet, timber and stone cabinet with stone counter-top and mirror. For the details of the water supply system, please refer to "j. Water supply". For the appliances provision and brand names, please refer to the "Appliances Schedule".
	Unit A on 45/F only	(also known as Unit A on 68/F)
	Master bathroom	Fitted with ceramic wash basin with chrome-plated basin mixer, ceramic water closet, acrylic Jacuzzi bathtub (1900mm(L) x 1140mm(W) x 635mm(H)) with chrome-plated shower mixer, chrome-plated shower set, timber cabinet with stone counter-top and mirror are installed at the master bathroom. Other fittings and accessories include LCD bathroom TV. For the details of the water supply system, please refer to "j. Water supply". For the appliances provision and brand names, please refer to the "Appliances Schedule".
	Bathroom 1	Fitted with ceramic wash basin with chrome-plated basin mixer, ceramic water closet, acrylic bathtub (1700mm(L) x 750mm(W) x 470mm(H)) with chrome-plated bathtub mixer, chrome-plated shower set, timber cabinet with stone counter-top and mirror. Other fittings and accessories include LCD bathroom TV. For the details of the water supply system, please refer to "j. Water supply". For the appliances provision and brand names, please refer to the "Appliances Schedule".
	Bathroom 2 & 3	Fitted with ceramic wash basin with chrome-plated basin mixer, ceramic water closet, chrome-plated shower set, timber cabinet with stone counter-top and mirror. Bathroom 3 include LCD bathroom TV. For the details of the water supply system, please refer to "j. Water supply". For the appliances provision and brand names, please refer to the "Appliances Schedule".

22. 裝置、裝修物料及設備
FITTINGS, FINISHES AND APPLIANCES

b.	Unit B on 45/F only	(also known as Unit B on 68/F)
	Master bathroom	Fitted with bronze wash basin with bronze-plated basin mixer, ceramic electric water closet, acrylic Jacuzzi bathtub (1500 mm diameter x 510 mm (H)) with bronze-plated bathtub mixer and bronze-plated shower set, timber and stone cabinet with stone counter-top and mirror. Other fittings and accessories including chrome-plated towel bar and LCD bathroom TV are provided. For the details of the water supply system, please refer to "j. Water supply". For the appliances provision and brand names, please refer to the "Appliances Schedule".
	Bathroom 1	Fitted with corian wash basin with chrome-plated basin mixer, ceramic water closet, acrylic Jacuzzi bathtub (1800 mm (L) x 900 mm (W) x 485 mm (D)) with chrome-plated bathtub mixer and chrome-plated shower set, timber and stone cabinet with stone counter-top and mirror. Other fittings and accessories including chrome-plated towel bar, chrome-plated toilet paper holder and LCD bathroom TV are provided. For the details of the water supply system, please refer to "j. Water supply". For the appliances provision and brand names, please refer to the "Appliances Schedule".
	Bathroom 2	Sanitary wares including corian wash basin with chrome-plated basin mixer, ceramic water closet and chrome-plated shower set, timber and stone cabinet with stone counter-top and mirror. Other fittings and accessories including chrome-plated towel bar, chrome-plated toilet paper holder and LCD bathroom TV are provided. For the details of the water supply system, please refer to "j. Water supply". For the appliances provision and brand names, please refer to the "Appliances Schedule".
	Bathroom 3	Sanitary wares including corian wash basin with chrome-plated basin mixer, ceramic water closet and steel enamel bathtub (1800 mm (L) x 800 mm (W) x 450 mm (D)) with chrome-plated bathtub mixer, timber and stone cabinet with stone counter-top and mirror. Other fittings and accessories including LCD bathroom TV is provided. For the details of the water supply system, please refer to "j. Water supply". For the appliances provision and brand names, please refer to the "Appliances Schedule".
	Unit A on 46/F only	(also known as Unit A on 88/F)
	Master bathroom	Fitted with ceramic wash basin with chrome-plated basin mixer, ceramic water closet, Quarry [®] Jacuzzi bathtub (1900 mm (L) x 950 mm (W) x 672 to 830 mm (H)) with chrome-plated bathtub mixer, chrome-plated shower set, timber cabinet with stone counter-top and mirror. Other fittings and accessories including chrome-plated toilet paper holder and steam panel are provided. For the details of the water supply system, please refer to "j. Water supply". For the appliances provision and brand names, please refer to the "Appliances Schedule".
	Bathroom 1	Fitted with ceramic wash basin with chrome-plated basin mixer, ceramic water closet, chrome-plated shower set, timber and stone cabinet with stone counter-top and mirror. Other fittings and accessories including chrome-plated toilet paper holder and LCD bathroom TV are provided. For the details of the water supply system, please refer to "j. Water supply". For the appliances provision and brand names, please refer to the "Appliances Schedule".

b.	Bathroom 2	Fitted with ceramic wash basin with chrome-plated basin mixer, ceramic water closet, acrylic Jacuzzi bathtub (2145 mm (L) x 1100 mm (W) x 570 mm (H)) with chrome-plated bathtub mixer, chrome-plated shower set, chrome-plated toilet paper holder, timber cabinet with stone counter-top and mirror. For the details of the water supply system, please refer to "j. Water supply". For the appliances provision and brand names, please refer to the "Appliances Schedule".
	Bathroom 3	Fitted with ceramic wash basin with chrome-plated basin mixer, ceramic water closet, chrome-plated shower set, timber and stone cabinet with stone counter-top and mirror. Other fittings and accessories including LCD bathroom TV are provided. For the details of the water supply system, please refer to "j. Water supply". For the appliances provision and brand names, please refer to the "Appliances Schedule".
	Unit B on 46/F only	(also known as Unit B on 88/F)
	Master bathroom	Fitted with natural stone wash basin with brass-plated basin mixer, ceramic water closet, cast iron composite Jacuzzi bathtub (1823mm (L) x 914mm (W) x 530mm(D)) with unlacquered brass-plated bathtub mixer and electronic key pad, unlacquered brass-plated shower set, steam room system, cosmetics & medicine cooler. Lacquer cabinet with stone counter top and mirror are installed. Other fittings and accessories including brass-plated towel bar and LCD bathroom TV are provided. For the details of the water supply system, please refer to "j. Water supply". For the appliances provision and brand names, please refer to the "Appliances Schedule".
	Bathroom 1	Fitted with ceramic wash basin with chrome-plated basin mixer, ceramic water closet, Quarry [®] composite Jacuzzi bathtub (1600mm (L) x 750mm (W) x 555mm(D)) with chrome-plated bathtub mixer and electronic key pad, chrome-plated shower set. Lacquer cabinet with stone counter top and mirror are installed. Other fittings and accessories including chrome-plated towel bar and LCD bathroom TV are provided. For the details of the water supply system, please refer to "j. Water supply". For the appliances provision and brand names, please refer to the "Appliances Schedule".
	Bathroom 4	Fitted with ceramic wash basin with chrome-plated basin mixer, ceramic water closet and chrome-plated shower set. Lacquer cabinet with stone counter top and mirror are installed. Other fittings and accessories including chrome-plated towel bar and LCD bathroom TV are provided. For the details of the water supply system, please refer to "j. Water supply". For the appliances provision and brand names, please refer to the "Appliances Schedule."
	Lavatory 1	Fitted with natural stone wash basin with nickel-plated basin mixer, ceramic water closet, nickel-plated shower set. Lacquer cabinet with stone counter top and mirror are installed. Other fittings and accessories including chrome-plated towel bar and LCD bathroom TV are provided. For the details of the water supply system, please refer to "j. Water supply". For the appliances provision and brand names, please refer to the "Appliances Schedule".
	Kitchen (8/F -21/F, 23/F - 39/F, 40/F & 42/F, Units A & B on 45/F)	Wooden kitchen cabinet finished with wood veneer door panel, formica stone counter-top with stainless steel sink and chrome-plated sink mixer are installed. Other provisions include dishwasher, oven, coffee maker, single-burner wok-hob and double-burner gas hob with barbecue grill, cooker hood, food warmer, steamer, wine cellar, fridge and LCD TV are provided. For the details of the water supply system, please refer to "j. Water supply". For the appliances provision and brand names, please refer to the "Appliances Schedule".

c.	Kitchen (Unit A on 41/F only)	Wooden kitchen cabinet with high gloss powder coated door panel and leather shelves, stone counter-top with stainless steel sink and chrome-plated sink mixer. Other provision include dishwasher, coffee maker, single-burner wok-hob, double-burner gas hob, barbecue grill, oven, steam oven, fridge, dish warmer and wine cellar are provided. For the details of the water supply system, please refer to "j. Water Supply". For the appliances provision and brand names, please refer to the "Appliances Schedule".
	Kitchen (Unit B on 43/F only)	Aluminium kitchen cabinet finished with metal door panel, glass counter-top with stainless steel sink and chrome-plated sink mixer are installed. Other provisions include dishwasher, coffee maker, single-burner wok-hob, double-burner gas hob, barbecue grill, fridge, food warmer, steamer r and wine cellar are provided For the details of the water supply system, please refer to "j. Water supply". For the appliances provision and brand names, please refer to the "Appliances Schedule".
	Kitchen (Unit A on 46/F only)	Aluminium kitchen cabinet finished with wood veneer and metal door panel, glass counter-top with stainless steel sink and chrome-plated sink mixer are installed. Other provisions include dishwasher, oven, cooker hood, coffee maker, single-burner wok-hob, double-burner gas hob, barbecue grill, fridge, food warmer and steamer are provided. For the details of the water supply system, please refer to "j. Water supply". For the appliances provision and brand names, please refer to the "Appliances Schedule".
	Kitchen (Unit B on 46/F only)	Wooden kitchen cabinet with high gloss lacquer finish with high gloss lacquer door panel and leather door panel, leather shelves, stone counter-top with stainless steel sink and chrome-plated sink mixer. Other provision include dishwasher, oven, coffee maker, single-burner wok-hob and double-burner gas hob, induction hob, barbecue grill, cooker hood, food warmer, steam oven with microware and fridge are provided. For the details of the water supply system, please refer to "j, Water Supply". For the appliances provision and brand names, please refer to the "Appliances Schedule."
	Bedroom	Not applicable
	Telephone	Telephone points provided inside all living and dining rooms, bedrooms, kitchen and some bathrooms. For the location and number of connection points, please refer to the "Schedule and Location of Electrical & Mechanical Provisions".
	Aerials	TV/FM points are provided for all living and dining rooms, bedrooms and kitchen. For the location and number of connection points, please refer to the "Schedule and Location of Electrical & Mechanical Provisions".
	Electrical installations	Partly concealed and partly exposed conduit wiring for lighting and power points are provided for all living and dining rooms, bedrooms, kitchen and bathrooms ¹ . Single phase electricity supply with miniature circuit breaker distribution board is provided in residential units. For the location and number of power points and air-conditioner points, please refer to the "Schedule and Location of Electrical & Mechanical Provisions".
h.	Gas supply	Towngas piping installed in all residential units and connected to water heaters and cookers. Connection of Towngas services are applied by residents. Temperature-modulated gas water heaters are provided at all units. For the location of gas water heater, please refer to the "Schedule and Location of Electrical & Mechanical Provisions".
	Washing machine connection	Drain point and water point are provided for washing machine in utility room. Please refer to the "Schedule and Location of Electrical & Mechanical Provisions" for the location of the connection points.
	Water supply	Partly concealed and partly exposed copper water pipes with thermal insulation for hot and cold water supply ² . Hot water supply to bathroom and kitchen is provided by gas water heater installed in bathroom or kitchen.

Remarks: 1. Other than those parts of the conduits concealed within concrete, the rest of them are exposed. The exposed conduits may be covered or hidden by false ceilings, bulkheads, cabinets, claddings, non-concrete partition walls, designated pipe ducts or other materials.

2. Other than those parts of the water pipes concealed within concrete, the rest of them are exposed. The exposed water pipes may be covered or hidden by false ceilings, bulkheads, cabinets, claddings, non-concrete partition walls, designated pipe ducts or other materials.

3.2 Interior Fittings - Bareshell Units include Unit B on 41/F (also known as 61/F) and Unit A on 43/F (also known as 66/F)

a.	Door	
	Main entrance door	Nil
	Bedroom door	Nil
	Bathroom door	Nil
	Kitchen back door	Timber door with timber door frame, wood veneer, plastic laminate, door lock and viewer is installed.
	Air-conditioning plant room door	Timber door with timber door frame, wood veneer, plastic laminate and door lock is installed.
b.	Bathroom	Sanitary wares installed include porcelain wash basin, porcelain water closet, chrome-plated basin mixer, steel enamel bathtub (1200mm (L) x 700mm (W) x 400mm (D), 1200mm (L) x 700mm (W) x 335mm (D) and 1500mm (L) x 700mm (W) x 400mm (D)) with chrome-plated bathtub mixer. For the details of the water supply system, please refer to "j. Water supply". For the appliances provision and brand names, please refer to the "Appliances Schedule".
	Lavatory	Sanitary wares installed include porcelain wash basin, porcelain water closet and chrome-plated basin mixer. For the details of the water supply system, please refer to "j. Water supply". For the appliances provision and brand names, please refer to the "Appliances Schedule".
c.	Kitchen	For the details of the water supply system, please refer to "j. Water supply". For the appliances provision and brand names, please refer to the "Appliances Schedule".
d.	Bedroom	Not applicable
e.	Telephone	Telephone points provided inside all living and dining rooms, bedrooms, kitchen and some bathrooms (except store lavatory). For the location and number of connection points, please refer to the "Schedule and Location of Electrical & Mechanical Provisions".
f.	Aerials	TV/FM points are provided for all living and dining rooms, bedrooms and kitchen. For the location and number of connection points, please refer to the "Schedule and Location of Electrical & Mechanical Provisions".
g.	Electrical installations	Partly concealed and partly exposed conduit wiring for lighting and power points are provided in all living and dining rooms, bedrooms, kitchen and bathrooms ¹ . Single phase electricity supply with miniature circuit breaker distribution board is provided in residential units. For the location and number of power points and air-conditioner points, please refer to the "Schedule and Location of Electrical & Mechanical Provisions".
h.	Gas supply	Towngas piping installed in all residential units and connected to water heaters and hobs. Connection of Towngas services to be applied by residents. Temperature-modulated gas water heaters are provided at all units, please refer to the "Schedule and Location of Electrical & Mechanical Provisions" for the location of the connection point.

22. 裝置、裝修物料及設備
FITTINGS, FINISHES AND APPLIANCES

i.	Washing machine connection	Drain point and water point are provided for washing machine in kitchen. Please refer to the "Schedule and Location of Electrical & Mechanical Provisions" for the location of the connection points.
j.	Water supply	Partly concealed and partly exposed copper water pipes with thermal insulation for hot and cold water supply ² . Hot water supply to bathroom and kitchen is provided by gas water heater installed in bathroom or kitchen.

Remarks: 1. Other than those parts of the conduits concealed within concrete, the rest of them are exposed. The exposed conduits may be covered or hidden by false ceilings, bulkheads, cabinets, claddings, non-concrete partition walls, designated pipe ducts or other materials.

2. Other than those parts of the water pipes concealed within concrete, the rest of them are exposed. The exposed water pipes may be covered or hidden by false ceilings, bulkheads, cabinets, claddings, non-concrete partition walls, designated pipe ducts or other materials.

4. Miscellaneous

a.	Lifts	Residential tower is served by five “Schindler” lifts. Three of these lifts (model number TX-GC 7050) serve G/F to 46/F (also known as 88/F). One of these lifts (model number MX-GC-5400MRL) is the podium to clubhouse lift serving G/F to 7/F. Another lift (model number MX-GC-5400MRL) is the shuttle lift travelling between Conduit Road level and G/F level. Besides, two private lifts “Schindler” (model number: MX-GC-5400MRL) exclusively serve the inter-floor traffic for the residents of the duplex units on 46/F (also known as 88/F).
b.	Letter box	Wood veneer letter box is provided for each residential unit at G/F main entrance lobby.
c.	Refuse collection	Refuse storage and material recovery chamber is provided on G/F. Refuse is collected by cleaner of each residential floor.
d.	Water meter, electricity meter and gas meter	Gas meter is provided in air-conditioning plant room of individual units while separate meters of water and electricity for each individual units are provided in common meter rooms on respective residential floors.

5. Security Facilities

a.	Security system	CCTV system is provided at Conduit Road level lift lobby, G/F tower entrance lobby, external fence walls and clubhouse. CCTV system inside the lift (excluding the private lifts for those units on 46/F (also known as 88/F) is connected to Management Office. Colour video door phone is installed at the living room and kitchen of each residential unit. Wireless panic alarm system is installed in the master bedroom of each residential unit. Door contact system is installed at the main entrance door, secondary entrance door and balcony sliding door of all residential units.
b.	Access control system	Octopus Card security access control is provided in two of three residential lifts. Visitor door phone and Octopus Card security access control are provided at Conduit Road level lift lobby and G/F tower entrance lobby.

6.1 Appliances Schedule - Typical Units including those on 8/F - 21/F, 23/F - 39/F, 40/F (also known as 60/F) & 42/F (also known as 63/F)

Appliances	Unit apply	Brand Name	Model No.
Split-type Air-conditioner	For all units	please refer to “Schedule of air-conditioners’ brand name and model number”.	
VRV Air-conditioner	For all units	please refer to “Schedule of air-conditioners’ brand name and model number”.	
Gas Water Heater	For all units	Noritz	NR32DQF
	For all units	TGC	RJW160TFL, RJW220TFL
	For all units	SIMPA	STW100TF
Single-burner Wok-hob and Double-burner Gas Hob with Barbecue Grill	For all units	Miele	CS 1018 G (Wok Burner Gas Hob) CS 1013 G (Double-burner Gas Hob) CS 1312 BG (Barbecue Grill)
Fridge	8/F - 21/F, 23/F - 39/F all units	Sub-zero	I685S
	40/F & 42/F (Also known as 60/F & 63/F) all units	Sub-zero	I695S
Wine Cellar	8/F - 21/F all units	Miele	KWT4154 UG-1
	23/F - 39/F, 40/F & 42/F (Also known as 60/F & 63/F) all units	Sub-zero	I430G/S
Dishwasher	8/F - 21/F all units	Miele	G1222 Sci
	23/F - 39/F, 40/F & 42/F (Also known as 60/F & 63/F) all units	Miele	G1833 Sci
Oven	8/F - 21/F all units	Miele	H5460 B
	23/F - 39/F, 40/F & 42/F (Also known as 60/F & 63/F) all units	Miele	H5681 B
LCD TV	For all units	Samsung	Series 6 LA22B650T6H, EZON-SHT-BT1100M/HK
Washing Machine	For all units	Miele	W 3844 WPS
Tumble Dryer	For all units	Miele	T 4804 C
Exhaust Fan	For all units	Xpelair	DX100 - 90839AW
Jacuzzi	8/F - 21/F all units	Villeroy & Boch	6830
	23/F - 39/F, 40/F & 42/F (Also known as 60/F & 63/F)	Duravit	Starck 710119-003
Central Vacuum Cleaning System	For all units	AXPIR	COMPACT 70118

Food Warmer / Warming Drawer	For all units	Miele	ESW5080-14
Cooker Hood	8/F - 21/F all units	Miele	DA 429-4
	23/F - 39/F, 40/F & 42/F (also known as 60/F & 63/F) all units	Miele	DA 422-4
Steamer	8/F - 21/F all units	Miele	DG 5060
	23/F - 39/F, 40/F & 42/F (also known as 60/F & 63/F) all units	Miele	DG 5080
Coffee Maker	For all units	Miele	CVA 5060
LCD TV	Unit A on 26/F	Sony	KDL-55HX850, KDL-46HX850
LCD TV	Unit B on 27/F	Sony	KDL-60HX720, KDL-46HX850, KDL-32HX750
LCD TV	Unit A on 33/F	Sony	KDL-60NX720, KDL-46NX720, KDL-32EX720
LCD TV	Unit B on 33/F	Sony	KDL-46HX850, KDL-40HX850
Sound System		B&O	BeoSound 5 Encore, BeoLab 6002, Beo 4
LCD TV	Unit B on 35/F	Sony	KDL-46HX850, KDL-40HX850
Sound System		B&O	BeoSound 9000, BeoLab 9, Beo 4
LCD TV	Unit B on 38/F	Loewe	Art 37 SL Full HD+

6.2 Appliances Schedule - Bareshell Units include Unit B on 41/F (also known as 61/F) and Unit A on 43/F (also known as 66/F)

Appliances	Unit apply	Brand Name	Model No.
Split-type Air-conditioner	For all units	please refer to “Schedule of air-conditioners’ brand name and model number”.	
VRV Air-conditioner	For all units	please refer to “Schedule of air-conditioners’ brand name and model number”.	
Gas Water Heater	For all units	TGC	RJW160TFL, RJW220TFL
	For all units	Noritz	NR32DQF
	For all units	SIMPA	STW100TF
Exhaust Fan	For all units	Xpelair	90839AW
Central Vacuum Cleaning System	For all units	AXPIR	BOOSTY 703H

6.3 Appliance Schedule
Unit A on 41/F (also known as 61/F)

Appliances	Brand Name	Model No.
Split-type Air-conditioner	Mitsubishi	Indoor Unit - SEZ-KC25VA, SEZ-KD25VAL.TH - MSZ-GA35VA, MEXZ-KF35VA-S Outdoor Unit - MXZ-4A71VA, MXZ-4C71VA
		Indoor Unit - FXDQ20NAVE, FXDQ32NAVE - FXDQ40NAVE, FXDQ40NBVE Outdoor Unit - RXYQ12PY1
VRV Air-conditioner	Daikin	
Gas Water Heater	TGC	RJW160TFL, RJW220TFL
	Noritz	NR32DQF
	SIMPA	STW100TF
Single-burner Wok-hob and Double-Burner Gas Hob with Barbecue Grill	Miele	CS 1018 (Gas Hob Wok Burner)
		CS 1013-1 (Gas Hob double-burner)
		CS1312 BG (Barbecue Grill)
Countertop Wok Range with Exhaust Hood and Exhaust System	Unico	Module A
Food Warmer	Miele	ESW6214 OBSB
Cooker Hood	Miele	DA3690
Steamer	Miele	DG6800 OBSB
Oven	Miele	DG6890 OBSB
Coffee Maker	Miele	CVA 6805 OBSB
Fridge	Miele	KF1911VI
Wine Cellar	Sensis	-
Dishwasher	Miele	G6370 SCVI
LCD TV	Sony	KDL-50W800C
	Cristal	BKW121
Washing Machine	Miele	W5740
Tumble Dryer	Miele	T8822C
Exhaust Fan	Xpelair	90839AW
Central Vacuum Cleaning System	AXPIR	COMPACT 70118
Bath tub with Digital Interface	Teuco	3TU-T70MYD
	Kohler	K-856-H2-0, K9698-0, K-7147-AF-CP

22. 裝置、裝修物料及設備

FITTINGS, FINISHES AND APPLIANCES

Appliances	Brand Name	Model No.
Sound System	B&O	Beolab18 Speaker (Rose Gold)
	SpeakerCraft	OE5 One

Unit B on 43/F (also known as 66/F)

Appliances	Brand Name	Model No.
Split-type Air-conditioner	please refer to “schedule of air - conditioners’ brand name and model number”.	
VRV Air-conditioner	please refer to “schedule of air - conditioners’ brand name and model number”.	
Gas Water Heater	TGC	RJW160TFL
	Noritz	NR32DQF
	SIMPA	STW100TF
Single-burner Wok-hob and Double-Burner Gas Hob with Barbecue Grill	Miele	CS 1018 G (Gas Hob Wok Burner)
		CS 1013 G (Gas Hob double-burner)
		CS 1312 BG (Barbecue)
Food Warmer	Miele	E SW 5080-29
Cooker Hood	Miele	DA 3190
Gas Water Heater	TGC	RJW160TFL
Steamer	Miele	DGC 5080 XL
Coffee Maker	Miele	CVA 5060
Fridge	Miele	KF1911 Vi
Wine Cellar	Isowind	-
Dishwasher	Miele	G5570SCVi
Countertop Wok Range with Exhaust Hood and Exhaust System	Unico	Module A, H1000
LCD TV	Olevia	DWTV 190M
Ceiling Speaker	KEF	CI-50
Washing machine	Miele	W 5740
Tumble Dryer	Miele	T 8822 C
Exhaust Fan	Xpelair	90839AW

Appliances	Brand Name	Model No.
Central Vacuum Cleaning System	AXPIR	COMPACT 70118
LCD TV	Sony	KDL-46NX710
	Cristal	BKW221, BKW191
Bathtub with Digital Interface	Kohler	K-1153-R-0 Fountainhead, K-176-1Sn DTV
Shower with Digital Interface	Kohler	K-8034-SN, K-695-1Sn DTV
Steam System	Kohler	K-1708-NA
Wall Speaker	Kohler	K-8033-SN
Water Closet	Kohler	K-3524-0 Fountainhead
Bathtub	Kohler	K-856-AH-0
Sound System	B&O	BeoSound 9000, Beo 4, BeoCenter 2, Beo 5, BeoLink Passive IR
	SpeakerCraft	5.2R, DT6 Zero

Unit A on 45/F (also known as 68/F)

Appliances	Brand Name	Model No.
Split-type Air-conditioner	please refer to “Schedule of air-conditioners’ brand name and model number”.	
VRV Air-conditioner	please refer to “Schedule of air-conditioners’ brand name and model number”.	
Gas Water Heater	TGC	RJW160TFL
	Noritz	NR32DQF
	SIMPA	STW100TF
Single-burner Wok-hob and Double-Burner Gas Hob with Barbecue Grill	Miele	CS 1018 G (Wok Burner Gas Hob)
		CS 1013 G (Double-burner Gas Hob)
		CS 1312 BG (Barbecue Grill)

Unit A on 45/F (also known as 68/F)

Appliances	Brand Name	Model No.
Food Warmer	Miele	E SW 5080-14
Cooker Hood	Miele	DA 422-4
Gas Water Heater	TGC	RJW160TFL
Steamer	Miele	DG 5080
Coffee Maker	Miele	CVA 5060
Fridge	Sub-zero	I695S
Wine Cellar	Sub-zero	I430G/S
Dishwasher	Miele	G 1272 SCVi
Oven	Miele	H5681 B
Microwave Oven	Miele	M8261-2
Countertop Wok Range with Exhaust Hood and Exhaust System	Unico	Module A, H1000
LCD TV	Samsung	Series 6
Washing Machine	Miele	W 3844 WPS
Tumble Dryer	Miele	T 4804 C
Exhaust Fan	Xpelair	90839AW
Central Vacuum Cleaning System	AXPIR	COMPACT 70118
LCD TV	Sony	KDL-46NX720, KDL-55NX720
	Cristal	BKW191, BKW171, BKW154
Bathtub with Digital Shower Interface	Kohler	K-1365-H2-0, K-527-1CP DTV
Shower with Digital Interface	Kohler	K-8034-CP, K-695-1CP DTV
Steam System	Kohler	K-1708-NA
Water Closet	Kohler	K-3900T-0 Numi
Bathtub	Kohler	K-1709-G158-0

Appliances	Brand Name	Model No.
Sound System	ReQuest IMS Server	-
	Sonance (Ceiling Speaker)	-
	Electro-Voice (Outdoor Speaker)	EVID 3.2
	Sherwood (FM/Dab/Internet) Radio Tuner	-
	McIntosh	MA6300
	Unison Research	Unico CD Primo
	Sonus Faber	Guarneri Memento
	Wilson Benesch	Full Circle Turntable
	Sherwood (AMP)	-
	Sherwood (Blu-Ray Player)	-
	Definitive Technology (Speaker)	-
	KEF	KUBE-1

Unit B on 45/F (also known as 68/F)

Appliances	Brand Name	Model No.
Split-type Air-conditioner	please refer to “Schedule of air-conditioners’ brand name and model number”.	
VRV Air-conditioner	please refer to “Schedule of air-conditioners’ brand name and model number”.	
Gas Water Heater	TGC	RJW160TFL
	Noritz	NR32DQF
	SIMPA	STW100TF
Single-burner Wok-hob and Double-burner Gas Hob with Barbecue Grill	Miele	CS 1018 G (Gas Hob Wok Burner) CS 1013 G (Gas Hob double-burner) CS 1312 BG (Barbecue)
Food Warmer	Miele	E SW 5080-14
Cooker Hood	Miele	DA 422-4
Gas Water Heater	TGC	RJW160TFL

22. 裝置、裝修物料及設備

FITTINGS, FINISHES AND APPLIANCES

Unit B on 45/F (also known as 68/F)		
Appliances	Brand Name	Model No.
Steamer	Miele	DG 5080
Coffee Maker	Miele	CVA 5060
Fridge	Sub-zero	I695S
Wine Cellar	Sub-zero	I430G/S
Dishwasher	Miele	G 1272 SCVi
Oven	Miele	H5681 B
Microwave Oven	Miele	M8261-2
Countertop Wok Range with Exhaust Hood and Exhaust System	Unico	Module A, H1000
LCD TV	Samsung	Series 6
Washing Machine	Miele	W 3844 WPS
Tumble Dryer	Miele	T 4804 C
Exhaust Fan	Xpelair	90839AW
Central Vacuum Cleaning System	AXPIR	COMPACT 70118
LCD TV	Sony	KDL-55W800, KDL-47W800
	Cristal	BKW154
	Samsung	EZON-SHT-BT1100M/HK
Wine Cellar	Sub-zero	ICB424G/S/TH
Bathtub	Kohler	K-18354T-G-0
Shower	Bossini	K37451000030016
Water closet	Kohler	KC-18608-0, KC-4736-0 C3
Sound System	ReQuest Music Server	-
	Sonance (Ceiling Speaker)	-
	Sherwood (FM/Dab/Internet) Radio Tuner	-
	Meridian	G01, G56, G06.2
	Dali Fazon	F5
	Pro-Ject Turn-Table	-

Unit A on 46/F (also known as 88/F)		
Appliances	Brand Name	Model No.
Split-type Air-conditioner	please refer to “Schedule of air-conditioners’ brand name and model number”.	
VRV Air-conditioner	please refer to “Schedule of air-conditioners’ brand name and model number”.	
Gas Water Heater	TGC	RJW160TFL
	Noritz	NR32DQF
	SIMPA	STW100TF
Single-burner Wok-hob and Double-Burner Gas Hob with Barbecue Grill	Miele	CS 1018 G (Wok Burner Gas Hob) CS 1013 G (Double-burner Gas Hob) CS 1312 BG (Barbecue Grill)
Induction Hob (2 Zones)	Miele	CS 1212 I
Food Warmer	Miele	E SW 5080-29
Cooker Hood	Miele	DA 3190, DA 3160
Gas Water Heater	TGC	RJW160TFL
Steamer	Miele	DGC 5080 XL
Coffee Maker	Miele	CVA 5060
Fridge	Sub-zero	ICB736TCI-LH, ICB700TCI-RH
	Miele	K121 Ui-1
Wine Cellar	Sub-zero	ICB427G-RH, ICB427G-LH
Dishwasher	Miele	G5570SCVi
Oven	Miele	H5981 BP
Countertop Wok Range with Exhaust Hood and Exhaust System	Unico	Module A, H1000
Washing Machine	Miele	W 5740
Tumble Dryer	Miele	T 8822 C
Exhaust Fan	Xpelair	90839AW
Central Vacuum Cleaning System	AXPIR	COMPACT 70118
LCD TV	Sony	KDL-46NX720, KDL-55NX720
	Cristal	BKW191, BKW171, BKW154
Bathtub	Villeroy & Boch	BQ194AVE9PDV
Steam Panel	Effegibi	Touch & Steam 30
Bathtub	Armani Roca	248200

Appliances	Brand Name	Model No.
Sound System	Marantz	AV-7005 & MM-7055
	Cambridge	-
	JVC	DLA-X3 3D Projector
	Avantgarde Acoustic	UNO G2
	Klipsch	RC-64, SW-110
	Sonance (Ceiling Speaker)	-
	ReQuest IMS Server	-
	Crown (AMP)	-
	Electro-Voice (Outdoor Speaker)	EVID 3.2
	Sherwood (FM/Dab/Internet) Radio Tuner	-

Unit B on 46/F (also known as 88/F)			
Appliances	Brand Name	Model No.	
Split-type Air-conditioner	Mitsubishi	Indoor Unit	MSZ-GA35VA, SEZ-KD25VA SEZ-KD35VA, SEZ-KA35VA
		Outdoor Unit	MXZ-4A71VA, MXZ-4C71VA
VRV Air-conditioner	Daikin	Indoor Unit	FXDQ40NAVE, FXDQ20NAVE FXDQ40NBVE, FXAQ40NAVE FXAQ20MAVE, FXDQ25PBVE
		Outdoor Unit	RXYQ12PAY1, RXYQ8PAY1
Gas Water Heater	TGC	RSW 160 TFL, RJW 220 TFL	
	Noritz	NR32 DQF	
	SIMPA	STW 100 TF	
Single-burner Wok-hob and Double-Burner Gas Hob with Barbecue Grill	Miele	CS 1028 (Gas Hob Wok Burner), CS 1013-1 (Gas Hob Double-burner) CS 1212-1i (Induction Hob), CS1312 BG (Barbecue Grill)	
Food Warmer	Miele	ESW 6229	
Cooker Hood	Miele	DA 3690, FH666	
Steam Oven with Microwave	Miele	DG 6800	
Oven	Miele	H 6890 BP, H 6290 B	
Coffee Maker	Miele	CVA 6401	
Fridge	Sub Zero	CBB1-48SID	
Dishwasher	Miele	G 6470 SCVi	
LCD TV	Cristal	CTV 154	
Washing Machine	Miele	WKB 120	
Tumble Dryer	Miele	TKB 340 WP	
Exhaust Fan	Xpelair	DX100 - 90839AW	
Central Vacuum Cleaning System	愛斯比	COMPACT 70118	
Bathtub	KALLISTA	P50035-H2-0	
	Villeroy & Boch	Squaro Edge 12	
Sound System	Denon	AVR-X1300W Atmos Surround Receiver	
	Maratnz	M-CR611	
	Linn	Sneaky Digital Stream Player	
	Qnap	TS-121 NAS	
	Sony	KDL-49X7000D 49” iDTV, BDP-S1500 Blu Ray Player, BDP-S6500 Blu Ray Player	
	SpeakerCraft	DT7, Profile CRS6	
	Cristal	15” iDTV	

The vendor undertakes that if lifts or appliances of the specified brand name or model number are not installed in 89-2 the development, lifts or appliances of comparable quality will be installed.

22. 裝置、裝修物料及設備
FITTINGS, FINISHES AND APPLIANCES

冷氣機品牌名稱及產品型號列表 Schedule of air-conditioners' brand name and model number

品牌名稱 Brand Name			層數 Floor	8-12/F	8-12/F	23-39/F	23-39/F	40/F & 42/F	40/F & 42/F	41/F	43/F	43/F	45/F	45/F	46/F
			亦稱 Also known as	—	—	—	—	60/F & 63/F	60/F & 63/F	61/F	66/F	66/F	68/F	68/F	88/F
			單位 Unit	A	B	A	B	A	B	B	A	B	A	B	A
				產品型號 Model Number											
分體式冷氣機 Split-type Air Conditioner	三菱 Mitsubishi	室內機 Indoor unit	SEZ-KC25	✓	✓	✓	✓	✓	✓	✓	✓	✓	✓	✓	✓
			SEZ-KA35										✓	✓	
			MSZ-GA25	✓	✓	✓	✓	✓	✓	✓	✓	✓	✓	✓	
			MSZ-GA35			✓	✓	✓	✓	✓	✓	✓	✓	✓	✓
		室外機 Outdoor unit	MXZ-4A71	✓	✓	✓	✓	✓	✓	✓	✓	✓	✓	✓	✓
			MUZ-GA25	✓	✓	✓	✓	✓	✓						
			MXZ-GA25							✓	✓	✓		✓	
VRV 冷氣機 VRV Air Conditioner	大金 Daikin	室內機 Indoor unit	FXAQ20MA											✓	✓
			FXDQ20NA	✓	✓	✓	✓	✓	✓	✓	✓	✓		✓	✓
			FXAQ32MA												
			FXAQ40MA	✓	✓	✓	✓	✓	✓	✓	✓	✓		✓	✓
			FXDQ40NA							✓	✓	✓		✓	✓
			FXDQ50NA	✓	✓	✓	✓	✓	✓						
			FXSQ40											✓	✓
		室外機 Outdoor unit	RXYQ8P											✓	✓
			RXYQ10P											✓	✓
			RXYQ12P	✓	✓	✓	✓		✓			✓			
			RXYQ14P					✓							✓
			RXYQ16P							✓	✓				
	三菱 Mitsubishi	室內機 Indoor unit	PEFY-P25VMS1-ER.TH										✓		
			PEFY-P32VMS1-ER.TH										✓		
			PEFY-P40VMS1-ER.TH										✓		
		室外機 Outdoor unit	PUHY-P200YHM-A										✓		
			PUHY-P250YHM-A										✓		

有關41樓(亦稱61樓)A單位及46樓(亦稱88樓)B單位之冷氣機品牌名稱及產品型號，請參閱第73-1、73-2、76、87、88及89-2頁。
For the air-conditioners' brand name and model number of Unit A on 41/F (also known as 61/F) and Unit B on 46/F (also known as 88/F), please refer to pages 73-1, 73-2, 76, 87, 88 and 89-2.

此版乃特意地留白
This page is deliberately left in blank.

22. 裝置、裝修物料及設備
FITTINGS, FINISHES AND APPLIANCES

住宅單位機電裝置位置及數量說明表
Schedule and Location of Electrical & Mechanical Provisions for Residential Properties

位置 Location	描述 Description	8/F		9-21/F		23-39/F*		60/F, 63/F		61/F		66/F
		A	B	A	B	A	B	A	B	A	B	A
客/飯廳 Living/Dining Room	電視/電台天線插座 TV/FM Outlet	4	4	4	4	4	4	4	4	1	3	4
	電話插座 Telephone Outlet	4	4	4	4	4	4	4	4	1	3	4
	13A單位插座 Single Socket Outlet	5	5	5	5	5	5	9	5	8	4	7
	13A雙位插座 Twin Socket Outlet	3	3	3	3	3	3	2	3	1	1	2
	室內空調機接駁點 Connection Point for Indoor A/C Unit	3	3	3	3	3	3	5	3	3	3	5
主人套房連衣帽間 Master Bedroom with Walk-in Closet	電視/電台天線插座 TV/FM Outlet	2	2	2	2	2	2	2	2	1	2	2
	電話插座 Telephone Outlet	2	2	2	2	2	2	2	2	3	2	2
	13A單位插座 Single Socket Outlet	3	3	3	3	3	3	3	3	9	5	5
	13A雙位插座 Twin Socket Outlet	2	2	2	2	1	1	1	1	2	2	2
	室內空調機接駁點 Connection Point for Indoor A/C Unit	2	2	2	2	2	2	2	2	2	2	2
	室外空調機接駁點 Connection Point for Outdoor A/C Unit	2	2	1	1	1	1	1	1	1	2	1
睡房 1 Bedroom 1	電視/電台天線插座 TV/FM Outlet	2	2	2	2	2	2	2	2	3	2	2
	電話插座 Telephone Outlet	2	2	2	2	2	2	2	2	2	2	2
	13A單位插座 Single Socket Outlet	4	4	3	3	3	3	3	3	5	3	3
	13A雙位插座 Twin Socket Outlet	1	1	1	1	1	1	1	1	3	1	1
	室內空調機接駁點 Connection Point for Indoor A/C Unit	1	1	1	1	1	1	1	1	2	2	2
	室外空調機接駁點 Connection Point for Outdoor A/C Unit	0	0	0	0	0	0	0	0	1	1	1
睡房 2 Bedroom 2	電視/電台天線插座 TV/FM Outlet	2	2	2	2	2	2	2	2	1	2	2
	電話插座 Telephone Outlet	2	2	2	2	2	2	2	2	2	2	2
	13A單位插座 Single Socket Outlet	4	4	4	4	4	4	4	4	3	3	3
	13A雙位插座 Twin Socket Outlet	1	1	1	1	1	1	1	1	1	1	1
	室內空調機接駁點 Connection Point for Indoor A/C Unit	1	1	1	1	1	1	1	1	1	1	1
睡房 3 Bedroom 3	電視/電台天線插座 TV/FM Outlet	0	0	0	0	2	2	2	2	2	2	2
	電話插座 Telephone Outlet	0	0	0	0	2	2	2	2	1	2	2
	13A單位插座 Single Socket Outlet	0	0	0	0	4	4	4	4	4	4	4
	13A雙位插座 Twin Socket Outlet	0	0	0	0	1	1	1	1	1	1	1
	室內空調機接駁點 Connection Point for Indoor A/C Unit	0	0	0	0	1	1	1	1	1	1	1

*26樓A單位、27樓B單位、33樓A單位、33樓B單位、35樓B單位及38樓B單位除外
Except Unit A on 26/F, Unit B on 27/F, Unit A & B on 33/F, Unit B on 35/F and Unit B on 38/F

住宅單位機電裝置位置及數量說明表
Schedule and Location of Electrical & Mechanical Provisions for Residential Properties

位置 Location	描述 Description	8/F		9-21/F		23-39/F*		60/F, 63/F		61/F		66/F
		A	B	A	B	A	B	A	B	A	B	A
睡房 4 Bedroom 4	電視/電台天線插座 TV/FM Outlet	0	0	0	0	0	0	0	0	3	0	2
	電話插座 Telephone Outlet	0	0	0	0	0	0	0	0	1	0	2
	13A單位插座 Single Socket Outlet	0	0	0	0	0	0	0	0	5	0	4
	13A雙位插座 Twin Socket Outlet	0	0	0	0	0	0	0	0	0	0	1
	室內空調機接駁點 Connection Point for Indoor A/C Unit	0	0	0	0	0	0	0	0	1	0	1
主人套房浴室 Bathroom in Master Bedroom	電視及電台天線插座 TV and FM outlet	0	0	0	0	0	0	0	0	1	0	0
	電話插座 Telephone Outlet	1	1	1	1	1	1	1	1	0	1	1
	13A單位插座 Single Socket Outlet	0	0	0	0	0	0	1	1	2	1	1
	室內空調機接駁點 Connection Point for Indoor A/C Unit	1	1	1	1	1	1	1	1	1	1	1
	室外空調機接駁點 Connection Point for Outdoor A/C Unit	0	0	1	1	1	1	1	1	1	0	1
浴室 1 Bathroom 1	電視及電台天線插座 TV and FM outlet	1	1	1	1	1	1	1	1	1	1	1
	電話插座 Telephone Outlet	1	1	1	1	1	1	1	1	0	1	1
	13A單位插座 Single Socket Outlet	1	1	1	1	1	1	1	1	2	0	0
	室內空調機接駁點 Connection Point for Indoor A/C Unit	1	1	1	1	1	1	1	1	1	1	1
	室外空調機接駁點 Connection Point for Outdoor A/C Unit	0	0	0	0	0	0	0	0	1	1	1
浴室 2 Bathroom 2	電視及電台天線插座 TV and FM outlet	1	1	1	1	1	1	1	1	1	1	1
	電話插座 Telephone Outlet	0	0	0	0	1	1	1	1	0	1	1
	13A單位插座 Single Socket Outlet	0	0	0	0	1	1	1	1	1	1	1
	室內空調機接駁點 Connection Point for Indoor A/C Unit	0	0	0	0	1	1	1	1	1	1	1
	室外空調機接駁點 Connection Point for Outdoor A/C Unit	0	0	0	0	1	1	1	1	2	2	2
浴室 3 Bathroom 3	電視及電台天線插座 TV and FM outlet	1	1	1	1	1	1	1	1	1	1	1
	電話插座 Telephone Outlet	0	0	0	0	0	0	0	0	0	1	1
	13A單位插座 Single Socket Outlet	0	0	0	0	0	0	0	0	1	1	1
廁所 Lavatory	電話插座 Telephone Outlet	0	0	0	0	0	0	0	0	0	0	0
	13A單位插座 Single Socket Outlet	0	0	0	0	0	0	0	0	0	0	0
廚房 Kitchen	電視及電台天線插座 TV and FM outlet	0	0	0	0	0	0	0	0	1	0	0
	電話插座 Telephone Outlet	1	1	1	1	1	1	1	0	0	1	0
	13A單位插座 Single Socket Outlet	10	10	10	10	12	12	10	1	18	7	1
	13A雙位插座 Twin Socket Outlet	1	1	1	1	1	1	1	10	1	1	9
	室內空調機接駁點 Connection Point for Indoor A/C Unit	1	1	1	1	1	1	1	1	0	0	1
	視像對講機 Video Door Phone	1	1	1	1	1	1	1	1	1	1	0
	煤氣接駁點 Gas Connection Point	1	1	1	1	1	1	1	1	1	1	1
	洗衣機接駁點 Washing Machine Connexion Point	1	1	1	1	1	1	1	1	1	1	1

*26樓A單位、27樓B單位、33樓A單位、33樓B單位、35樓B單位及38樓B單位除外
Except Unit A on 26/F, Unit B on 27/F, Unit A & B on 33/F, Unit B on 35/F and Unit B on 38/F

22. 裝置、裝修物料及設備
FITTINGS, FINISHES AND APPLIANCES

住宅單位機電裝置位置及數量說明表
Schedule and Location of Electrical & Mechanical Provisions for Residential Properties

位置 Location	描述 Description	8/F		9-21/F		23-39/F*		60/F, 63/F		61/F		66/F
		A	B	A	B	A	B	A	B	A	B	A
起居室 Family Room	電視/電台天線插座 TV/FM Outlet	0	0	0	0	0	0	0	0	0	0	0
	電話插座 Telephone Outlet	0	0	0	0	0	0	0	0	0	0	0
	13A單位插座 Single Socket Outlet	0	0	0	0	0	0	0	0	0	0	0
	室內空調機接駁點 Connection Point for Indoor A/C Unit	0	0	0	0	0	0	0	0	0	0	0
遊戲室 Game Room	電視/電台天線插座 TV/FM Outlet	0	0	0	0	0	0	0	0	0	0	0
	電話插座 Telephone Outlet	0	0	0	0	0	0	0	0	0	0	0
	13A單位插座 Single Socket Outlet	0	0	0	0	0	0	0	0	0	0	0
	13A雙位插座 Twin Socket Outlet	0	0	0	0	0	0	0	0	0	0	0
室內空調機接駁點 Connection Point for Indoor A/C Unit	室內空調機接駁點 Connection Point for Indoor A/C Unit	0	0	0	0	0	0	0	0	0	0	0
書房 Study Room	電視/電台天線插座 TV/FM Outlet	0	0	0	0	0	0	0	0	0	3	0
	電話插座 Telephone Outlet	0	0	0	0	0	0	0	0	0	2	0
	13A單位插座 Single Socket Outlet	0	0	0	0	0	0	0	0	0	4	0
	13A雙位插座 Twin Socket Outlet	0	0	0	0	0	0	0	0	0	1	0
室內空調機接駁點 Connection Point for Indoor A/C Unit	室內空調機接駁點 Connection Point for Indoor A/C Unit	0	0	0	0	0	0	0	0	0	1	0
工作間 Utility	13A單位插座 Single Socket Outlet	3	3	3	3	3	3	3	3	0	0	0
	13A雙位插座 Twin Socket Outlet	0	0	0	0	0	0	0	0	0	0	0
	室內空調機接駁點 Connection Point for Indoor A/C Unit	0	0	0	0	0	0	0	0	1	1	1
儲物室 Store Room	13A單位插座 Single Socket Outlet	2	2	1	1	1	1	1	1	0	0	0
	室內空調機接駁點 Connection Point for Indoor A/C Unit	1	1	1	1	1	1	1	1	0	0	0
冷氣機房 A/C Plant Room	室外空調機接駁點 Connection Point for Outdoor A/C Unit	2	2	2	2	1	1	1	1	2	2	2
	13A單位插座 Single Socket Outlet	2	2	2	2	2	2	2	2	2	2	2
走廊及樓梯 Corridor and Staircase	室外空調機接駁點 Connection Point for Outdoor A/C Unit	0	0	0	0	0	0	0	0	0	0	0
電梯大堂 Lift Lobby	室內空調機接駁點 Connection Point for Indoor A/C Unit	1	1	1	1	1	1	1	1	1	1	1
天台 Roof	13A單位插座 Single Socket Outlet	0	0	0	0	0	0	0	0	0	0	0

*26樓A單位、27樓B單位、33樓A單位、33樓B單位、35樓B單位及38樓B單位除外
Except Unit A on 26/F, Unit B on 27/F, Unit A & B on 33/F, Unit B on 35/F and Unit B on 38/F

22. 機電裝置平面圖
MECHANICAL & ELECTRICAL PROVISION PLAN

住宅單位機電裝置位置及數量說明表
Schedule and Location of Electrical & Mechanical Provisions for Residential Properties

位置 Location	描述 Description	26/F	27/F	33F		35/F	38/F	66/F	68/F		88/F	
		A	B	A	B	B	B	B	A	B	A	B
客/飯廳 Living/Dining Room	電視/電台天線插座 TV/FM Outlet	1	1	1	0	0	1	0	0	0	1	1
	電話插座 Telephone Outlet	2	1	1	1	1	2	0	1	1	2	0
	13A單位插座 Single Socket Outlet	2	0	1	5	1	1	5	3	5	12	3
	13A雙位插座 Twin Socket Outlet	6	5	3	0	5	4	1	0	0	5	2
	室內空調機接駁點 Connection Point for Indoor A/C Unit	3	3	3	3	3	3	4	8	6	7	10
飯廳 2 Dining Room 2	電視/電台天線插座 TV/FM Outlet	0	0	0	0	0	0	0	0	1	0	0
	電話插座 Telephone Outlet	0	0	0	0	0	0	0	1	0	0	0
	13A單位插座 Single Socket Outlet	0	0	0	0	0	0	0	3	0	0	0
	13A雙位插座 Twin Socket Outlet	0	0	0	0	0	0	0	2	2	0	0
	室內空調機接駁點 Connection Point for Indoor A/C Unit	0	0	0	0	0	0	0	0	3	0	0
主人套房 Master Bedroom	電視/電台天線插座 TV/FM Outlet	1	1	2	1	1	1	1	1	1	1	1
	電話插座 Telephone Outlet	1	1	1	1	2	1	2	1	2	2	3
	13A單位插座 Single Socket Outlet	4	3	1	3	0	0	4	4	1	8	3
	13A雙位插座 Twin Socket Outlet	1	1	5	3	4	5	2	1	4	0	6
	室內空調機接駁點 Connection Point for Indoor A/C Unit	2	2	2	2	2	2	2	2	2	3	2
主人房浴室 Master Bathroom	電視/電台天線插座 TV/FM Outlet	0	0	0	0	0	0	0	0	0	0	1
	電話插座 Telephone Outlet	1	1	1	1	1	0	0	0	0	0	0
	13A單位插座 Single Socket Outlet	0	0	0	0	0	2	0	1	4	0	1
	13A雙位插座 Twin Socket Outlet	0	0	0	0	0	0	0	0	0	0	2
	室內空調機接駁點 Connection Point for Indoor A/C Unit	1	1	1	1	1	1	1	1	2	2	1
主人房衣帽間 Master Walk-in Closet	室外空調機接駁點 Connection Point for Outdoor A/C Unit	1	1	1	1	1	2	0	0	1	0	0
	電話插座 Telephone Outlet	0	0	0	0	0	0	1	1	1	1	0
	13A單位插座 Single Socket Outlet	1	0	0	0	0	0	0	1	0	2	0
	13A雙位插座 Twin Socket Outlet	0	0	0	0	0	0	2	1	2	1	2
	室內空調機接駁點 Connection Point for Indoor A/C Unit	0	0	0	0	0	0	1	1	0	1	2
睡房 1 (66樓B單位、68樓B單位及 88樓B單位連衣帽間) Bedroom 1 (With Walk-in Closet in Flat B on 66/F, Flat B on 68/F and Flat B on 88/F)	室外空調機接駁點 Connection Point for Outdoor A/C Unit	1	1	1	1	1	0	2	2	1	0	0
	電視/電台天線插座 TV/FM Outlet	2	2	2	1	1	1	1	1	1	1	1
	電話插座 Telephone Outlet	1	1	1	1	1	2	2	2	2	2	2
	13A單位插座 Single Socket Outlet	2	1	1	3	3	3	4	3	0	4	3
	13A雙位插座 Twin Socket Outlet	3	3	3	1	1	1	4	2	6	0	6
室內空調機接駁點 Connection Point for Indoor A/C Unit	室內空調機接駁點 Connection Point for Indoor A/C Unit	1	1	1	1	1	1	3	2	2	1	3
	室外空調機接駁點 Connection Point for Outdoor A/C Unit	0	0	0	0	0	0	1	0	2	0	0

22. 裝置、裝修物料及設備 FITTINGS, FINISHES AND APPLIANCES

住宅單位機電裝置位置及數量說明表 Schedule and Location of Electrical & Mechanical Provisions for Residential Properties

位置 Location	描述 Description	26/F	27/F	33F		35/F	38/F	66/F	68/F		88/F	
		A	B	A	B	B	B	B	A	B	A	B
睡房2 (68樓及88樓A單位連衣帽間) Bedroom 2 (With Walk-in Closet in Flat A on 68/F & Flat A on 88/F)	電視/電台天線插座 TV/FM Outlet	0	0	1	1	1	0	0	0	1	1	0
	電話插座 Telephone Outlet	1	1	1	2	2	1	2	1	1	2	1
	13A單位插座 Single Socket Outlet	0	2	0	3	3	2	2	3	0	7	0
	13A雙位插座 Twin Socket Outlet	2	1	4	2	2	1	2	0	4	2	2
	室內空調機接駁點 Connection Point for Indoor A/C Unit	1	1	1	1	1	1	1	2	1	2	1
	室外空調機接駁點 Connection Point for Outdoor A/C Unit	0	0	0	0	0	0	0	1	0	2	0
睡房3 (68樓及88樓A單位連衣帽間) Bedroom 3 (With Walk-in Closet in Flat A on 68/F & Flat A on 88/F)	電視/電台天線插座 TV/FM Outlet	1	1	0	0	1	1	1	1	1	0	0
	電話插座 Telephone Outlet	1	1	1	1	1	3	1	1	2	1	0
	13A單位插座 Single Socket Outlet	2	0	0	1	3	3	4	4	1	3	0
	13A雙位插座 Twin Socket Outlet	4	3	2	1	1	3	0	1	4	0	0
	室內空調機接駁點 Connection Point for Indoor A/C Unit	1	1	1	1	1	1	1	2	1	1	0
睡房 4 Bedroom 4	電視/電台天線插座 TV/FM Outlet	0	0	0	0	0	0	1	0	0	0	1
	電話插座 Telephone Outlet	0	0	0	0	0	0	1	0	0	0	1
	13A單位插座 Single Socket Outlet	0	0	0	0	0	0	3	0	0	0	0
	13A雙位插座 Twin Socket Outlet	0	0	0	0	0	0	1	0	0	0	6
	室內空調機接駁點 Connection Point for Indoor A/C Unit	0	0	0	0	0	0	1	0	0	0	0
浴室 1 Bathroom 1	電視/電台天線插座 TV/FM Outlet	0	0	0	0	0	0	0	0	0	0	1
	電話插座 Telephone Outlet	0	0	0	0	0	0	0	0	1	0	0
	13A單位插座 Single Socket Outlet	0	0	0	0	0	1	0	0	0	0	0
	13A雙位插座 Twin Socket Outlet	0	0	0	0	0	0	0	0	0	0	1
	室內空調機接駁點 Connection Point for Indoor A/C Unit	1	1	1	1	1	1	0	1	1	1	1
	室外空調機接駁點 Connection Point for Outdoor A/C Unit	0	0	0	0	0	0	1	1	0	0	0
浴室 2 Bathroom 2	13A單位插座 Single Socket Outlet	0	0	0	0	0	1	0	1	0	0	0
	室內空調機接駁點 Connection Point for Indoor A/C Unit	1	1	0	1	1	1	1	1	1	2	0
	室外空調機接駁點 Connection Point for Outdoor A/C Unit	1	1	1	1	1	1	1	0	0	0	0
浴室 3 Bathroom 3	電話插座 Telephone Outlet	0	0	0	0	0	0	0	0	1	0	0
	13A單位插座 Single Socket Outlet	0	0	0	0	0	0	0	1	0	0	0
	室內空調機接駁點 Connection Point for Indoor A/C Unit	0	0	0	0	0	0	1	0	1	1	0
浴室 4 Bathroom 4	電視/電台天線插座 TV/FM Outlet	0	0	0	0	0	0	0	0	0	0	1
	13A單位插座 Single Socket Outlet	0	0	0	0	0	0	0	0	0	0	1
	13A雙位插座 Twin Socket Outlet	0	0	0	0	0	0	0	0	0	0	1
	室內空調機接駁點 Connection Point for Indoor A/C Unit	0	0	0	0	0	0	1	0	0	0	1

住宅單位機電裝置位置及數量說明表 Schedule and Location of Electrical & Mechanical Provisions for Residential Properties

位置 Location	描述 Description	26/F	27/F	33F		35/F	38/F	66/F	68/F		88/F	
		A	B	A	B	B	B	B	A	B	A	B
廚房 Kitchen	電視/電台天線插座 TV/FM Outlet	0	0	0	0	0	0	1	0	0	0	1
	電話插座 Telephone Outlet	1	1	1	1	1	1	0	1	1	0	1
	13A單位插座 Single Socket Outlet	12	12	12	12	12	13	5	11	6	5	5
	13A雙位插座 Twin Socket Outlet	1	1	1	1	1	1	1	5	2	7	2
	室內空調機接駁點 Connection Point for Indoor A/C Unit	1	1	1	1	1	1	3	0	0	1	1
工作間 (88樓B單位工作間1) Utility (Utility 1 in Flat B on 88/F)	電話插座 Telephone Outlet	0	0	0	0	0	0	0	1	0	1	1
	13A單位插座 Single Socket Outlet	3	3	3	2	2	3	0	0	1	0	1
	13A雙位插座 Twin Socket Outlet	0	0	0	0	0	0	2	1	0	1	0
	室內空調機接駁點 Connection Point for Indoor A/C Unit	0	0	0	0	0	0	1	1	1	1	1
88樓B單位工作間2 Utility 2 in Flat B on 88/F	13A單位插座 Single Socket Outlet	0	0	0	0	0	0	0	0	0	0	1
	室內空調機接駁點 Connection Point for Indoor A/C Unit	0	0	0	0	0	0	0	0	0	0	1
儲物室 (88 樓B單位儲物1) Store Room (Store 1 in Flat B on 88/F)	電視/電台天線插座 TV/FM Outlet	0	0	0	0	0	0	0	0	0	0	0
	電話插座 Telephone Outlet	0	0	0	0	0	0	0	0	0	0	0
	13A單位插座 Single Socket Outlet	0	0	0	0	0	0	0	0	1	1	0
	13A雙位插座 Twin Socket Outlet	0	0	0	0	0	0	0	0	0	0	2
	室內空調機接駁點 Connection Point for Indoor A/C Unit	1	1	1	1	1	1	0	0	0	0	0
廁所 (88 樓B單位廁所1) Lavatory (Lavatory 1 in Flat B on 88/F)	電視/電台天線插座 TV/FM Outlet	0	0	0	0	0	0	0	0	0	0	1
	13A單位插座 Single Socket Outlet	0	0	0	0	0	0	0	0	1	0	1
	13A雙位插座 Twin Socket Outlet	0	0	0	0	0	0	0	0	0	0	2
	室內空調機接駁點 Connection Point for Indoor A/C Unit	0	0	0	0	0	0	0	1	1	0	1
	室外空調機接駁點 Connection Point for Outdoor A/C Unit	0	0	0	0	0	0	0	1	1	0	0
電梯大堂 Lift Lobby	13A單位插座 Single Socket Outlet	1	0	0	1	1	0	1	1	1	1	0
	13A雙位插座 Twin Socket Outlet	0	0	1	0	0	0	0	0	0	0	0
	室內空調機接駁點 Connection Point for Indoor A/C Unit	1	1	1	1	1	1	1	1	1	2	1
冷氣機房 A/C Plant Room	13A單位插座 Single Socket Outlet	2	2	2	2	2	2	2	3	3	2	1
	室內空調機接駁點 Connection Point for Indoor A/C Unit	0	0	0	0	0	0	0	0	1	0	0
鞋儲物間 Shoe Storage	13A單位插座 Single Socket Outlet	0	0	0	0	0	0	0	0	1	0	0
走廊及樓梯 Corridor & staircase	電視/電台天線插座 TV/FM Outlet	0	0	0	0	0	0	0	0	1	0	0
	電話插座 Telephone Outlet	0	0	0	0	0	0	0	0	1	0	0
	13A單位插座 Single Socket Outlet	2	0	0	0	0	0	1	0	1	3	0
	13A雙位插座 Twin Socket Outlet	0	0	0	0	0	0	0	0	1	0	0
	室外空調機接駁點 Connection Point for Outdoor A/C Unit	0	0	0	0	0	0	0	1	1	2	0
起居室 Family Room	電視/電台天線插座 TV/FM Outlet	0	0	0	0	0	0	0	1	0	0	0
	電話插座 Telephone Outlet	0	0	0	0	0	0	0	1	0	0	0
	13A單位插座 Single Socket Outlet	0	0	0	0	0	0	0	2	2	0	0
	13A雙位插座 Twin Socket Outlet	0	0	0	0	0	0	0	2	2	0	1
	室內空調機接駁點 Connection Point for Indoor A/C Unit	0	0	0	0	0	0	0	1	0	0	2

22. 裝置、裝修物料及設備 FITTINGS, FINISHES AND APPLIANCES

住宅單位機電裝置位置及數量說明表

Schedule and Location of Electrical & Mechanical Provisions for Residential Properties

位置 Location	描述 Description	26/F	27/F	33F		35/F	38/F	66/F	68/F		88/F	
		A	B	A	B	B	B	B	A	B	A	B
影音設備室 AV Room	電視/電台天線插座 TV/FM Outlet	0	0	0	0	0	0	0	0	1	2	0
	電話插座 Telephone Outlet	0	0	0	0	0	0	0	0	1	0	0
	13A單位插座 Single Socket Outlet	0	0	0	0	0	0	0	2	0	3	0
	13A雙位插座 Twin Socket Outlet	0	0	0	0	0	0	0	0	6	6	0
	室內空調機接駁點 Connection Point for Indoor A/C Unit	0	0	0	0	0	0	0	1	1	2	0
	室外空調機接駁點 Connection Point for Outdoor A/C Unit	0	0	0	0	0	0	0	0	0	2	0
書房 Study Room	電視/電台天線插座 TV/FM Outlet	0	0	0	0	0	0	0	0	0	0	0
	電話插座 Telephone Outlet	0	0	0	0	0	0	0	0	0	0	0
	13A單位插座 Single Socket Outlet	0	0	0	0	0	0	0	0	0	2	0
	13A雙位插座 Twin Socket Outlet	0	0	0	0	0	0	0	0	0	0	2
	室內空調機接駁點 Connection Point for Indoor A/C Unit	0	0	0	0	0	0	0	0	0	2	0
茶水間 Pantry	13A單位插座 Single Socket Outlet	0	0	0	0	0	0	0	0	0	3	0
	室內空調機接駁點 Connection Point for Indoor A/C Unit	0	0	0	0	0	0	0	0	0	1	0
平台 Flat Roof	13A單位插座 Single Socket Outlet	0	0	0	0	0	0	0	0	0	2	0
天台 Roof	13A單位插座 Single Socket Outlet	0	0	0	0	0	0	0	0	0	8	4
天台樓梯間 Lift lobby on Roof	13A單位插座 Single Socket Outlet	0	0	0	0	0	0	0	0	0	1	0

第90至96頁之住宅單位機電裝置位置及數量說明表取代第97至114頁之機電裝置平面圖標示。

The schedule of electrical and mechanical provisions on pages 90 to 96 replaces the electrical and mechanical provision plans on pages 97 to 114.

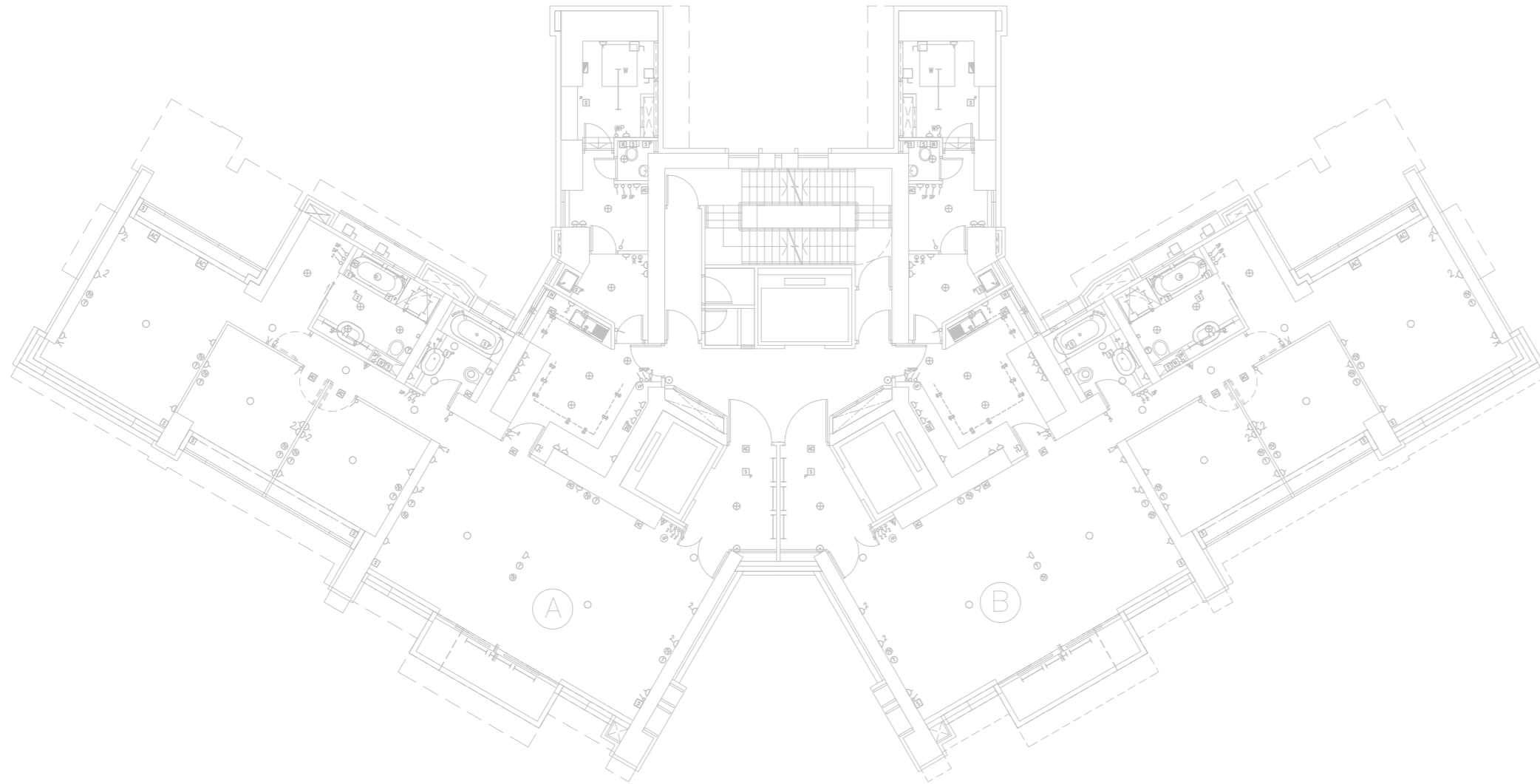
機電裝置平面圖 ELECTRICAL & MECHANICAL PROVISION PLAN

8樓
8/F

22. 裝置、裝修物料及設備 FITTINGS, FINISHES AND APPLIANCES

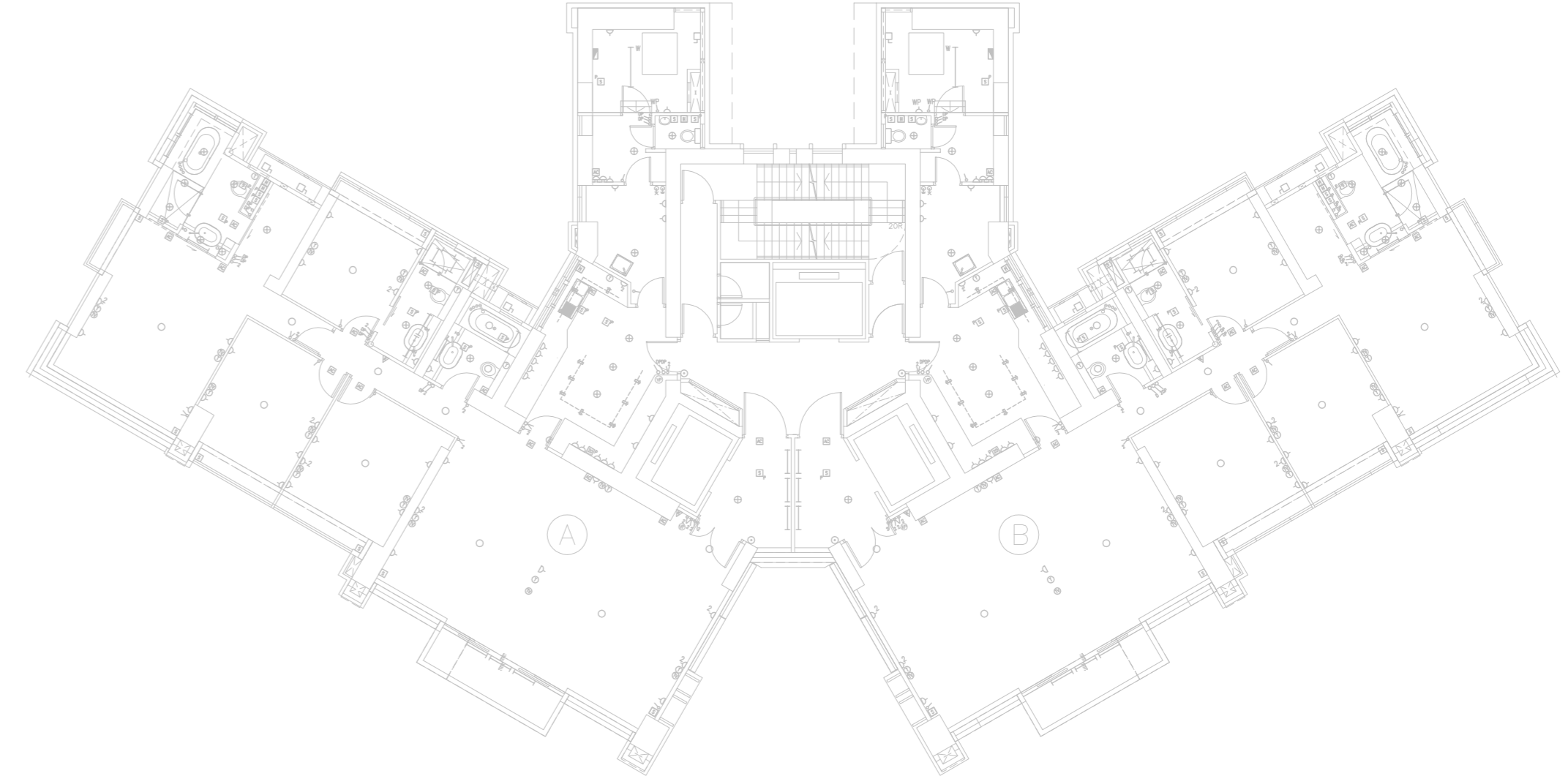
機電裝置平面圖 ELECTRICAL & MECHANICAL PROVISION PLAN

9樓至21樓
9/F – 21/F



機電裝置平面圖 ELECTRICAL & MECHANICAL PROVISION PLAN

23樓至39樓 (26樓A單位、27樓B單位、33樓A單位、33樓B單位、35樓B單位及38樓B單位除外)
23/F – 39/F (Except Unit A on 26/F, Unit B on 27/F, Unit A & B on 33/F, Unit B on 35/F and Unit B on 38/F)



22. 裝置、裝修物料及設備
FITTINGS, FINISHES AND APPLIANCES

機電裝置平面圖 ELECTRICAL & MECHANICAL PROVISION PLAN

26樓A單位
UNIT A on 26/F



27樓B單位
UNIT B on 27/F

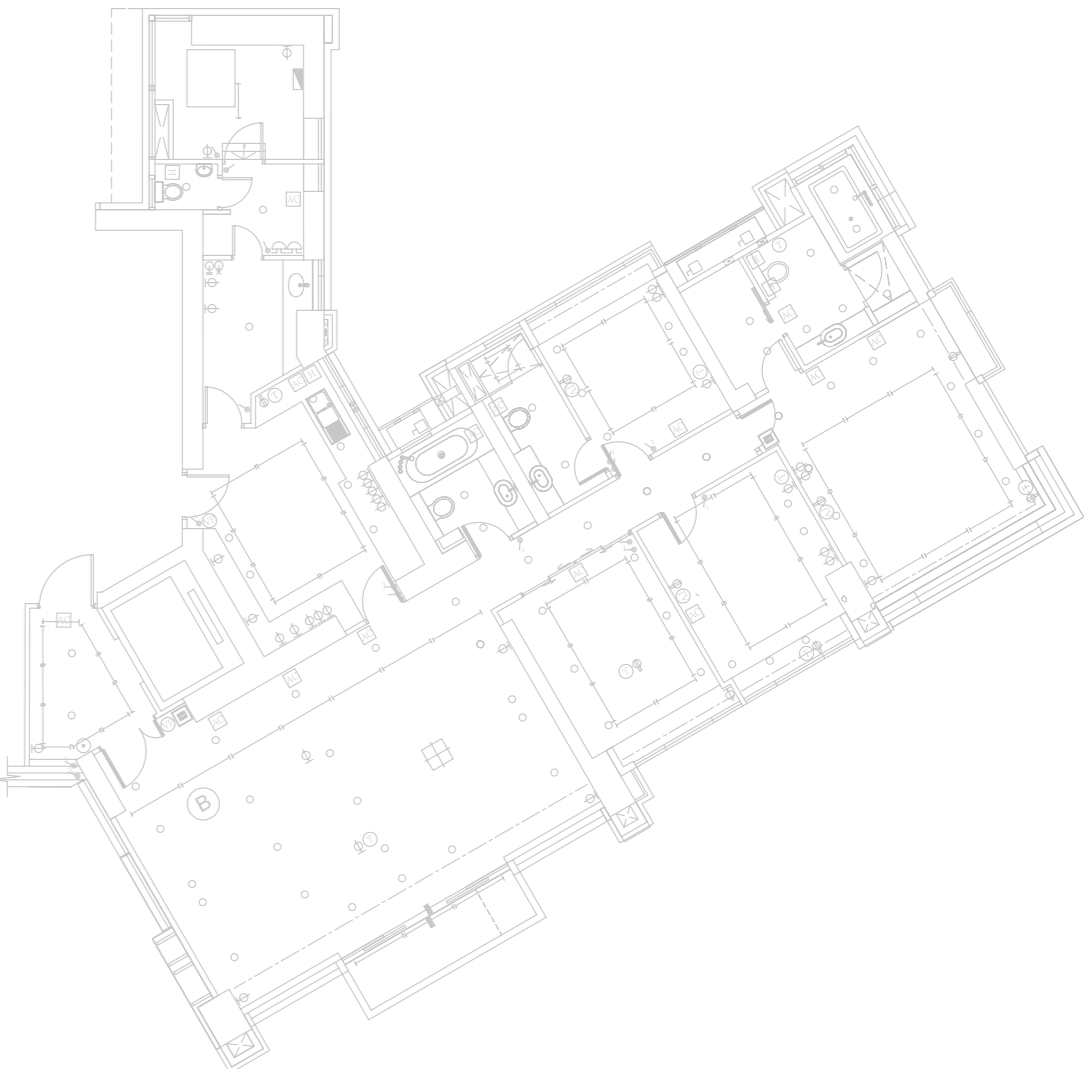


機電裝置平面圖 ELECTRICAL & MECHANICAL PROVISION PLAN

33樓A單位
UNIT A on 33/F



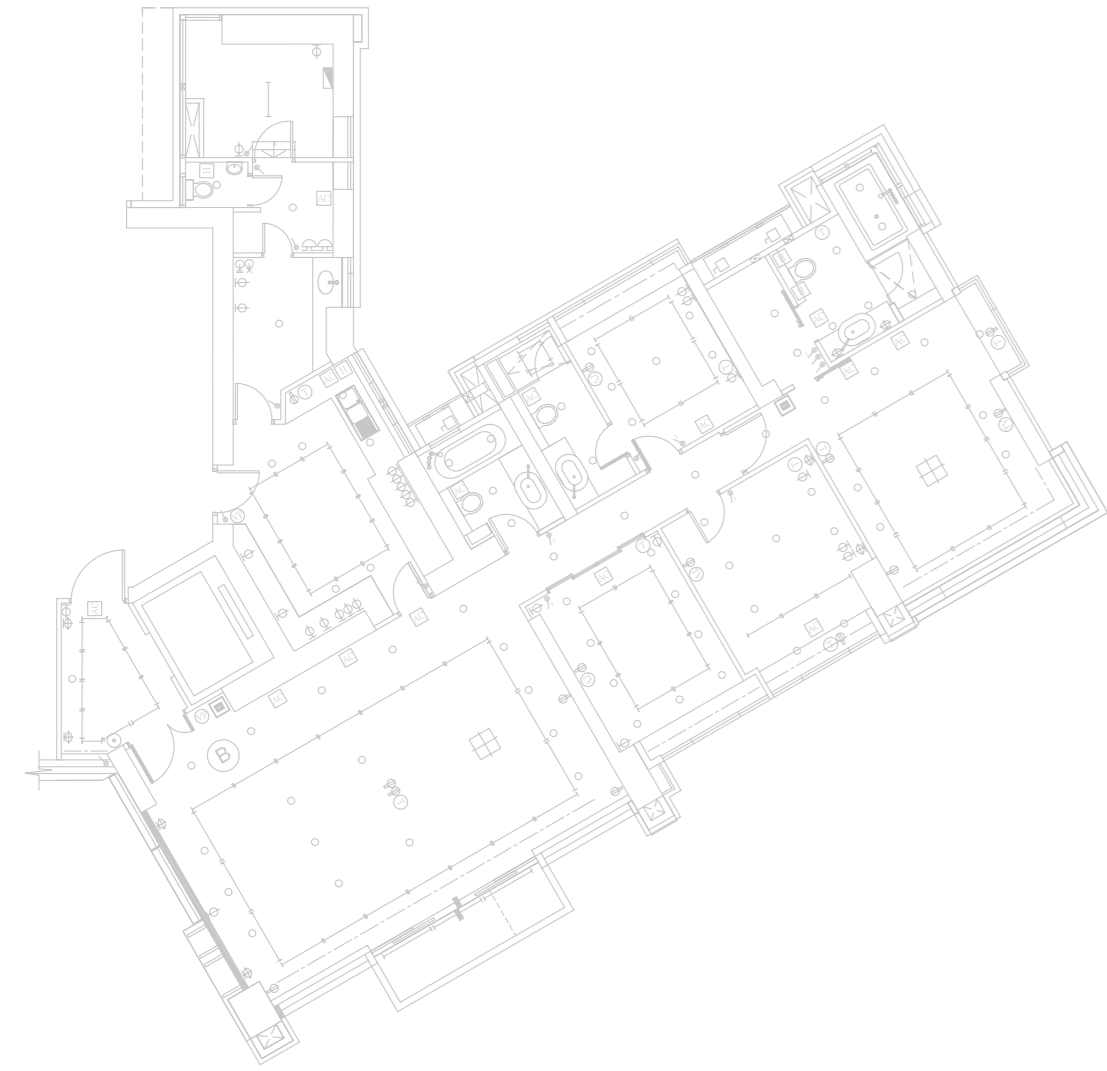
33樓B單位
UNIT B on 33/F



22. 裝置、裝修物料及設備 FITTINGS, FINISHES AND APPLIANCES

機電裝置平面圖 ELECTRICAL & MECHANICAL PROVISION PLAN

35樓B單位
UNIT B on 35/F

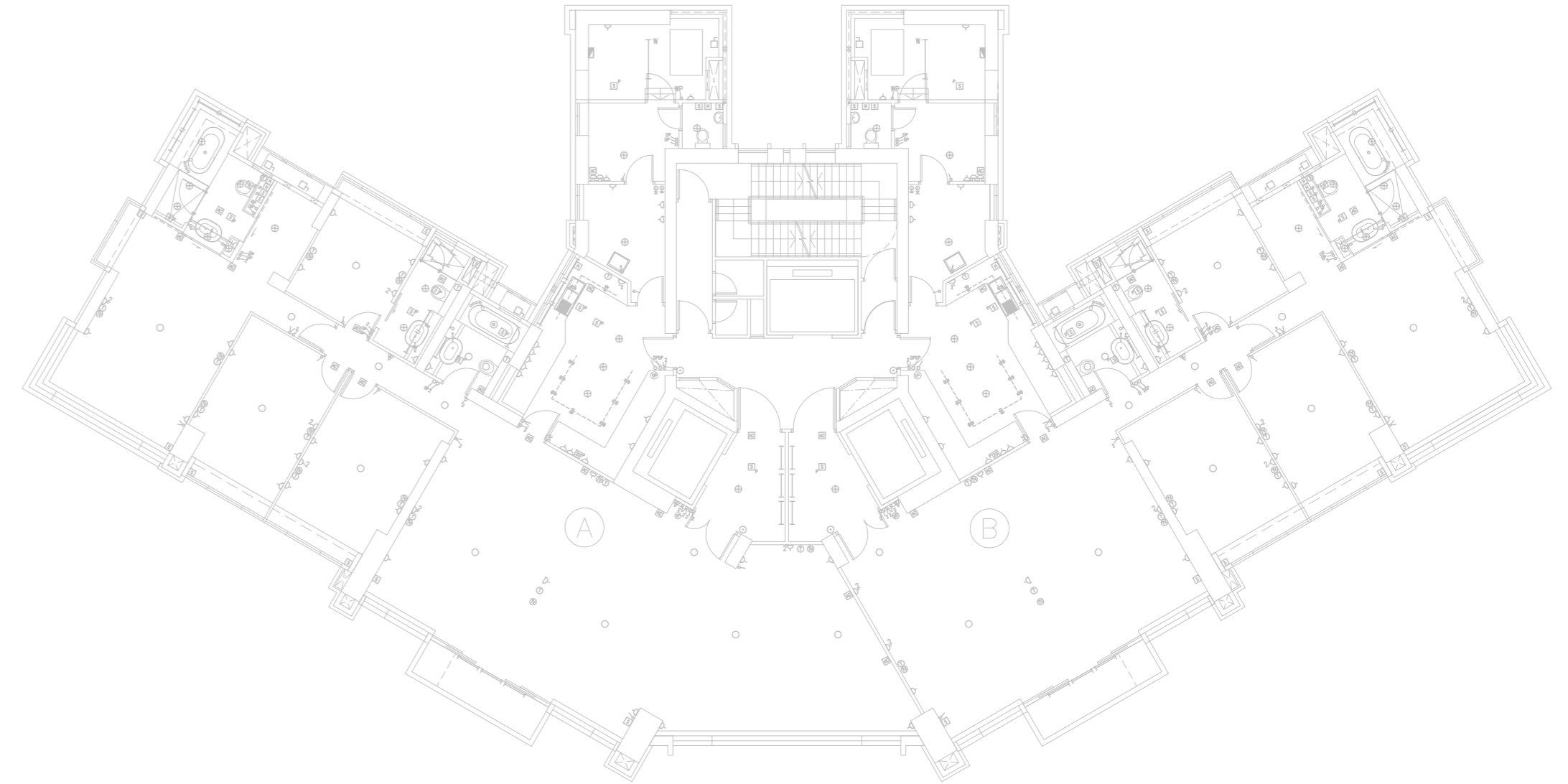


38樓B單位
UNIT B on 38/F



機電裝置平面圖 ELECTRICAL & MECHANICAL PROVISION PLAN

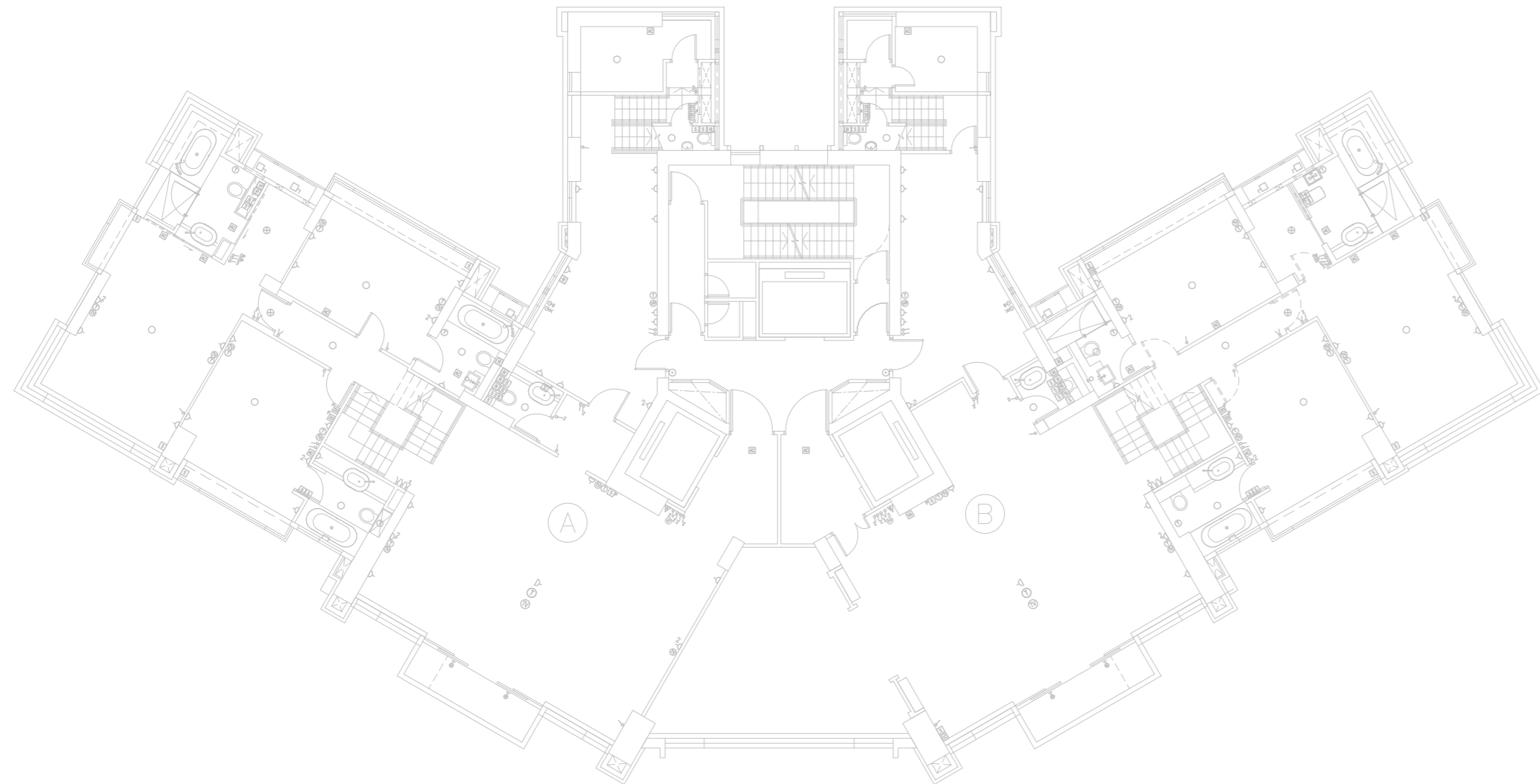
40樓(亦稱60樓)及42樓(亦稱63樓)
40/F (ALSO KNOWN AS 60/F) AND 42/F (ALSO KNOWN AS 63/F)



22. 裝置、裝修物料及設備 FITTINGS, FINISHES AND APPLIANCES

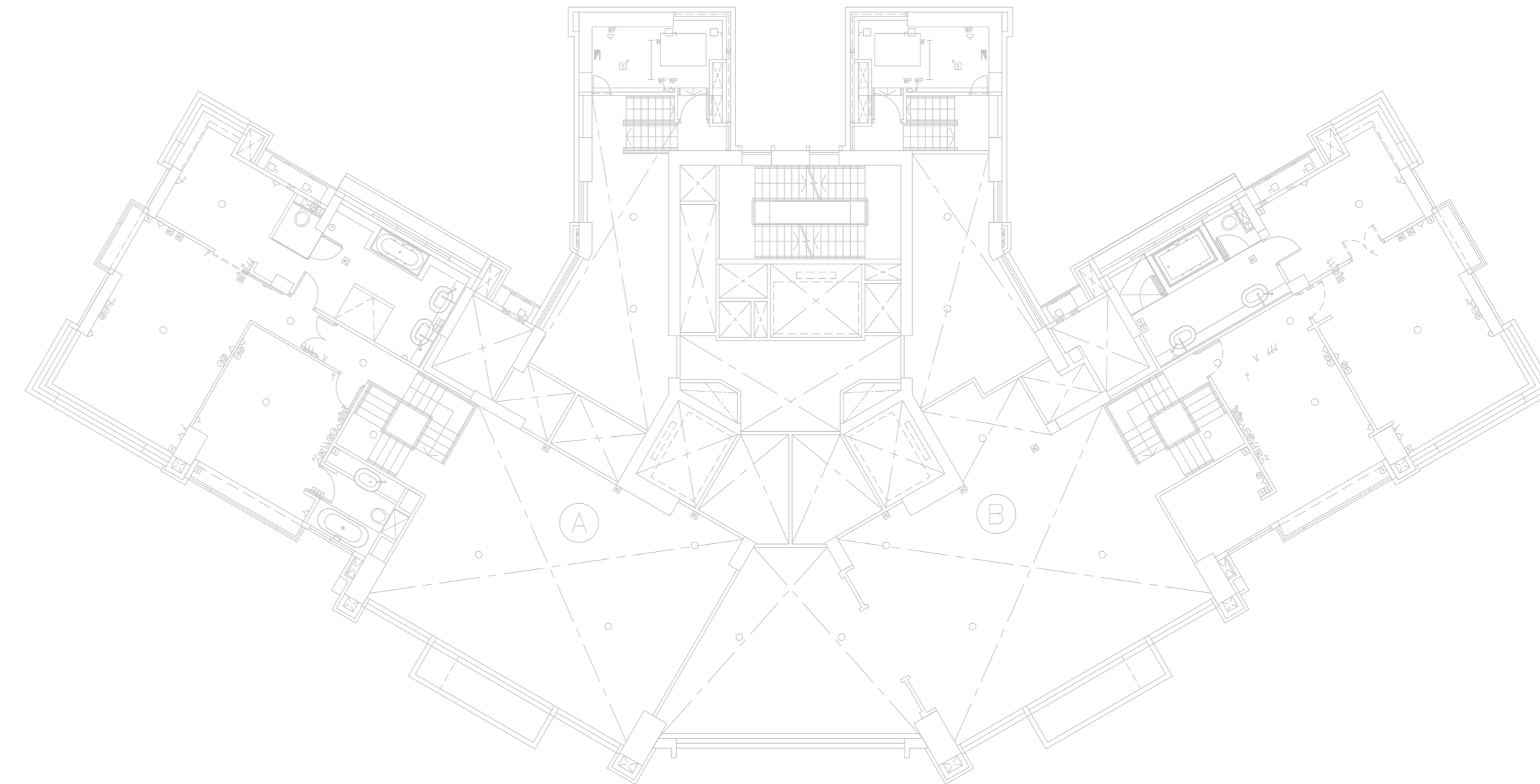
機電裝置平面圖 ELECTRICAL & MECHANICAL PROVISION PLAN

41樓(亦稱61樓)
41/F (ALSO KNOWN AS 61/F)
半複式低層 LOWER SPLIT-LEVEL



機電裝置平面圖 ELECTRICAL & MECHANICAL PROVISION PLAN

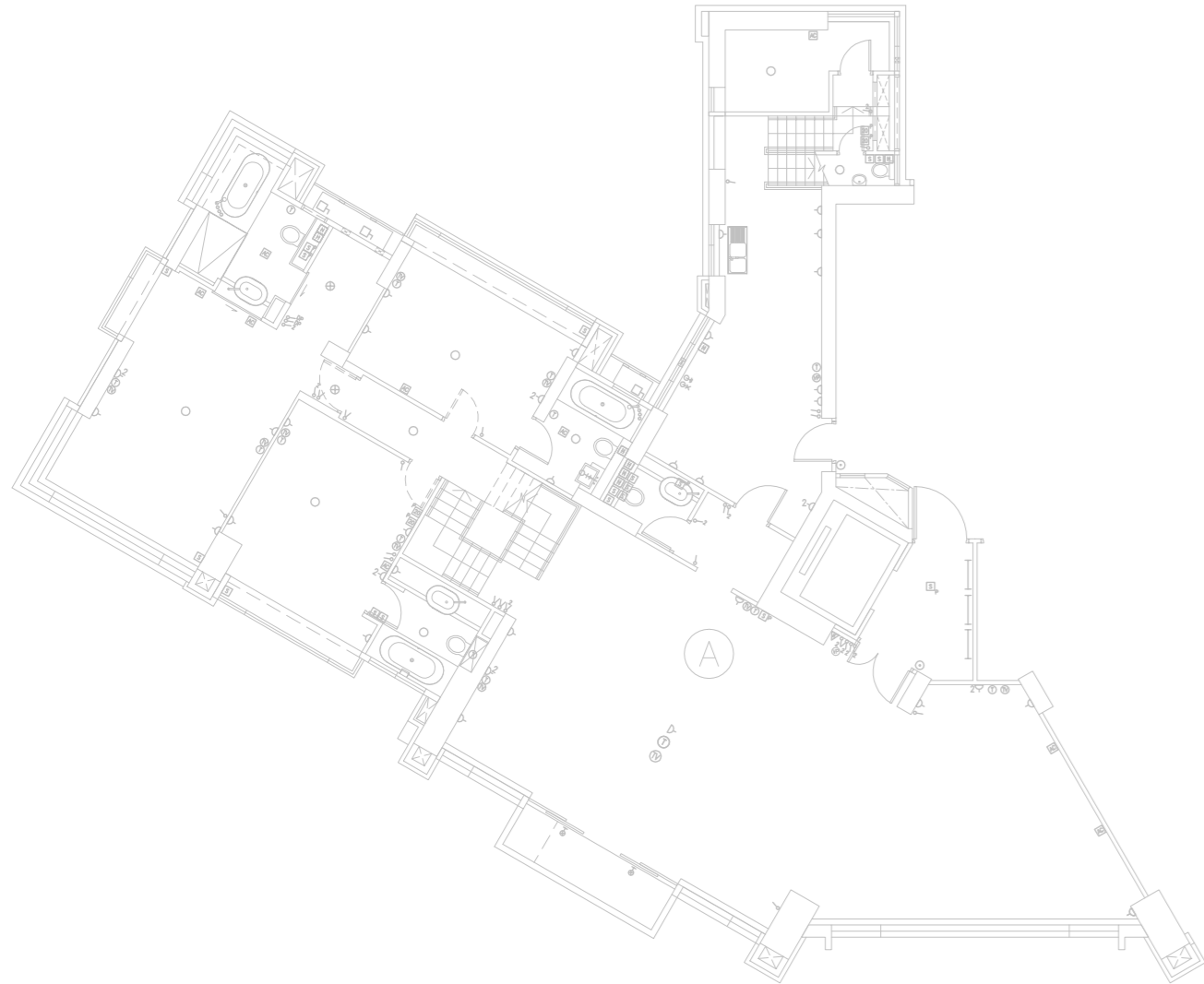
41樓(亦稱61樓)
41/F (ALSO KNOWN AS 61/F)
半複式高層 UPPER SPLIT-LEVEL



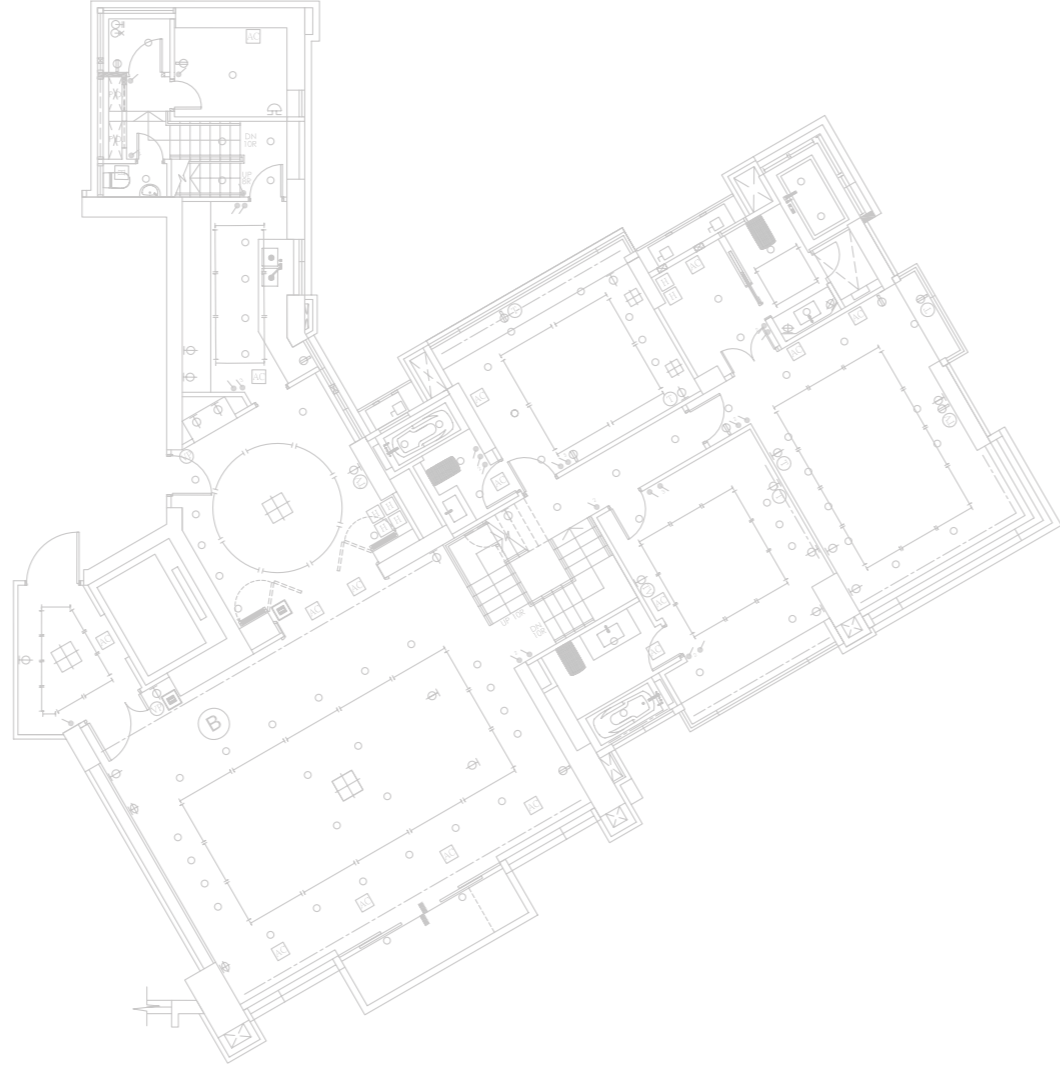
22. 機電裝置平面 MECHANICAL & ELECTRICAL PROVISION PLAN

機電裝置平面圖 ELECTRICAL & MECHANICAL PROVISION PLAN

43樓(亦稱66樓)A單位
UNIT A on 43/F (ALSO KNOWN AS 66/F)
半複式低層 LOWER SPLIT-LEVEL

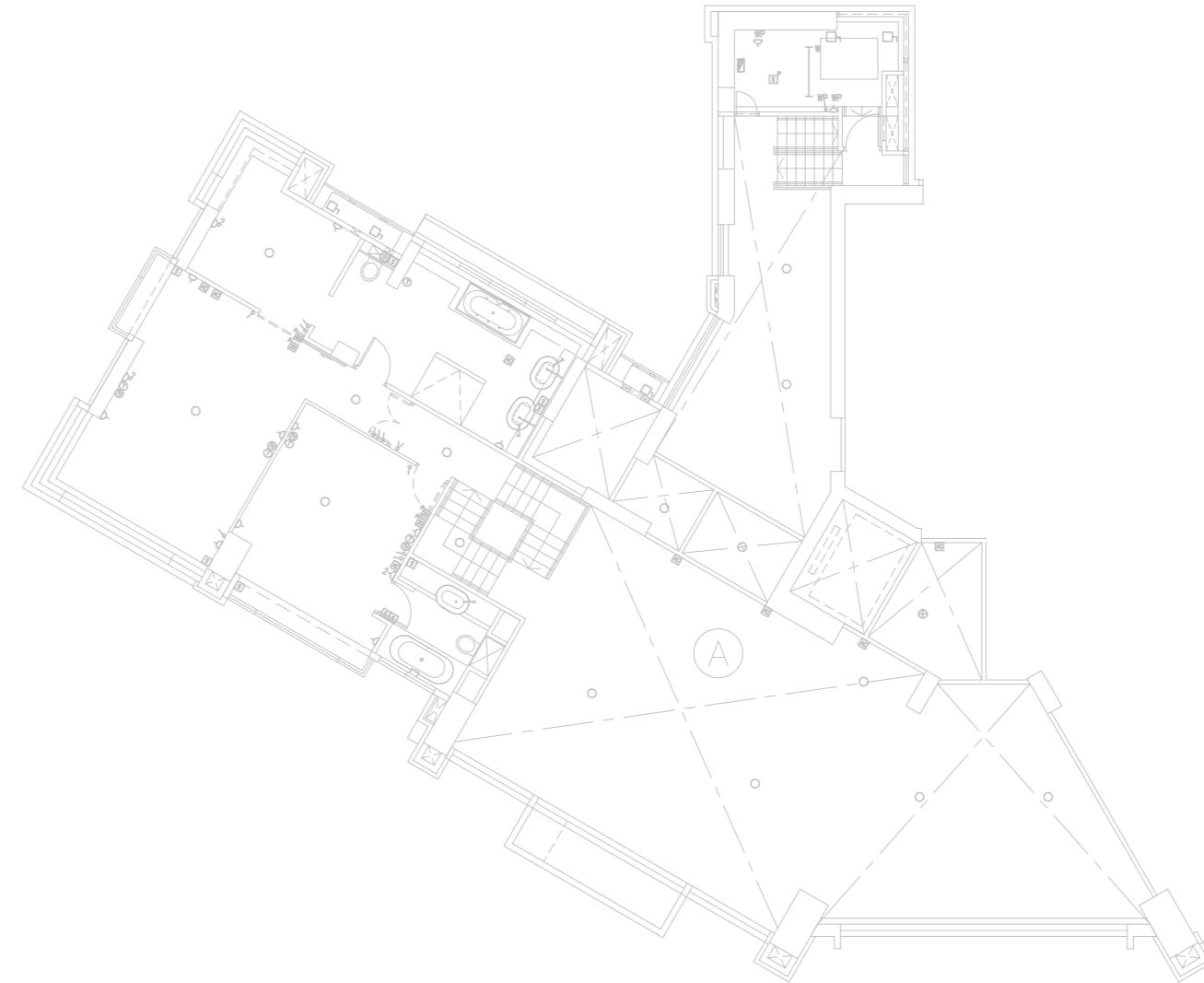


43樓(亦稱66樓)B單位
UNIT B on 43/F (ALSO KNOWN AS 66/F)
半複式低層 LOWER SPLIT-LEVEL

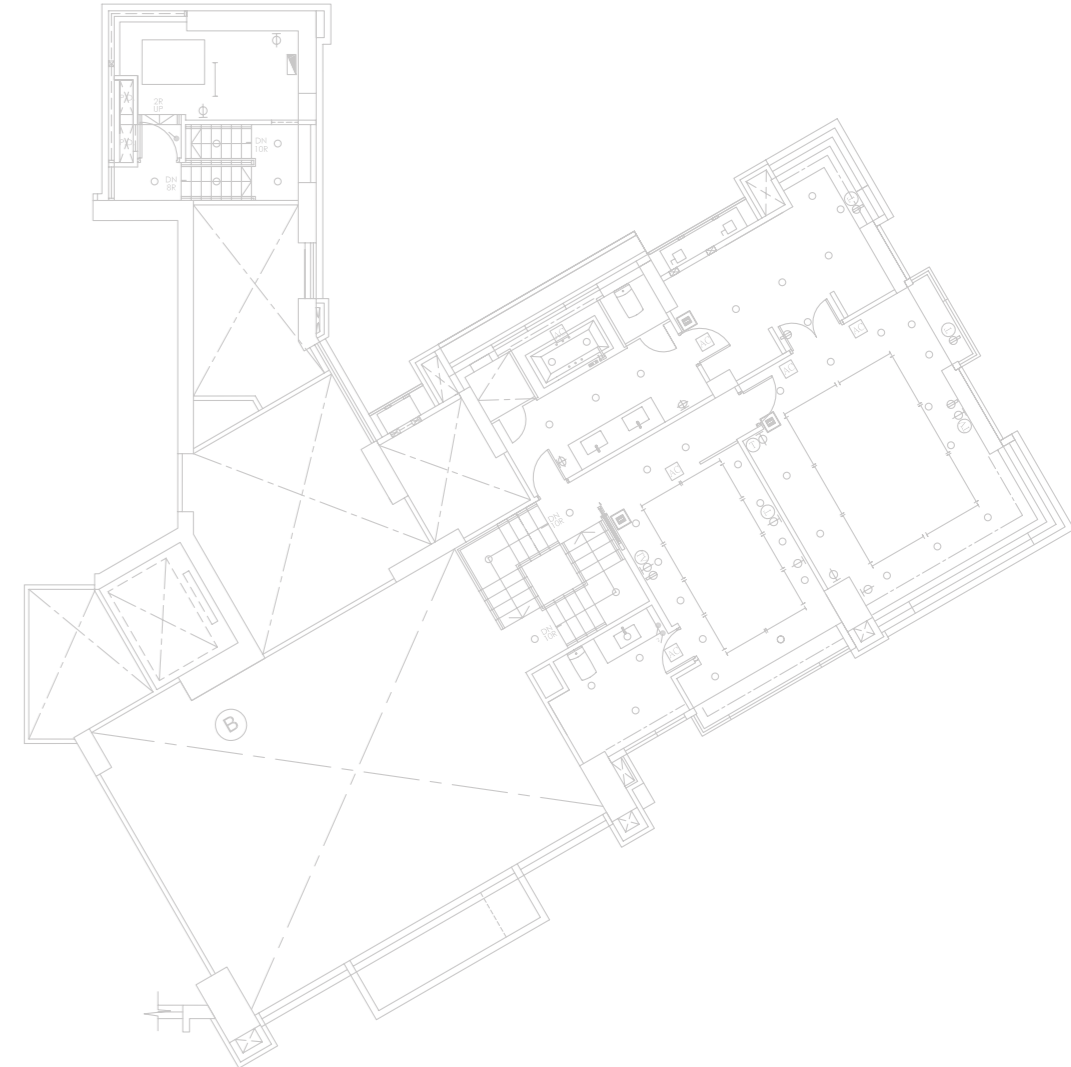


機電裝置平面圖 ELECTRICAL & MECHANICAL PROVISION PLAN

43樓(亦稱66樓)A單位
UNIT A on 43/F (ALSO KNOWN AS 66/F)
半複式高層 UPPER SPLIT-LEVEL



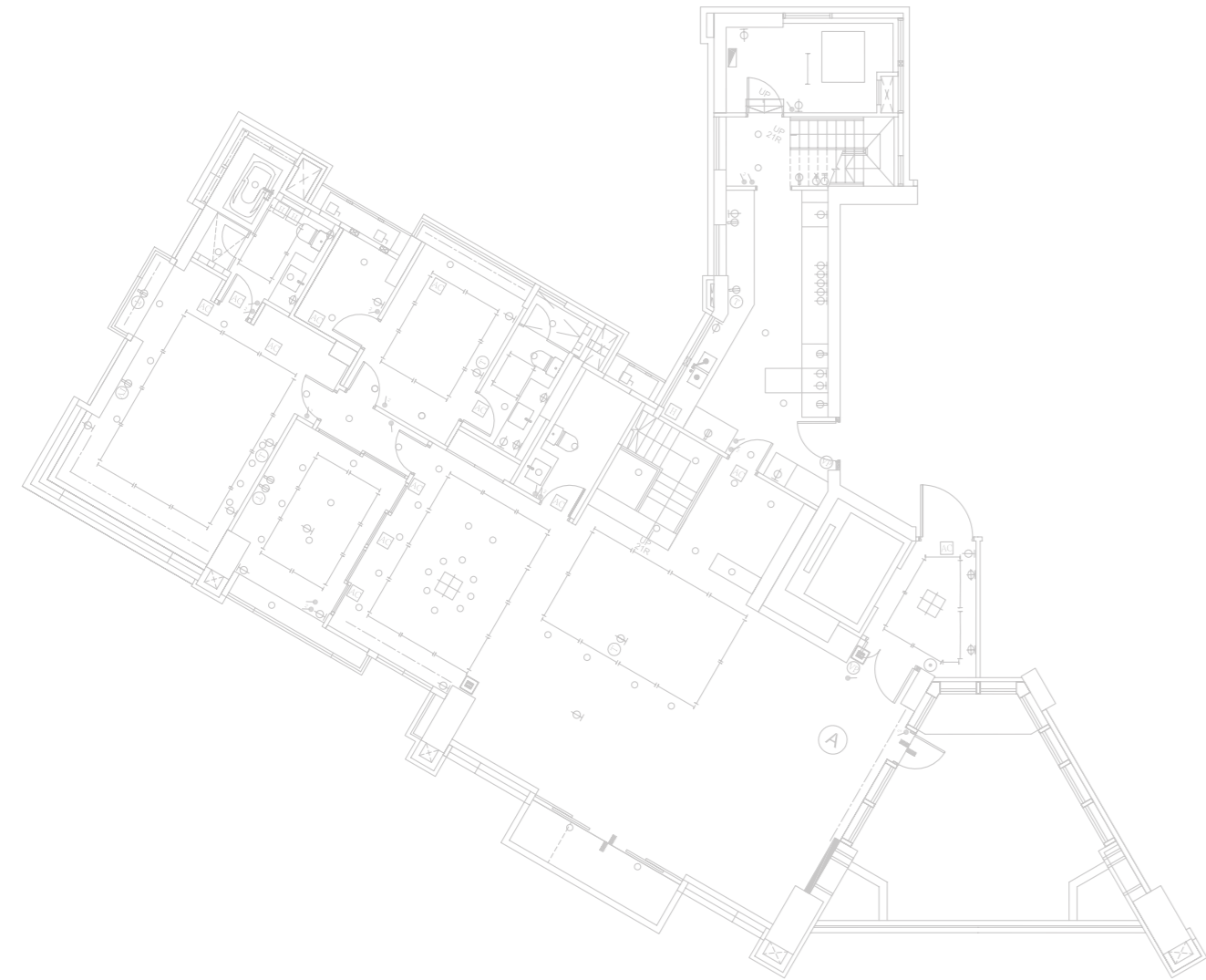
43樓(亦稱66樓)B單位
UNIT B on 43/F (ALSO KNOWN AS 66/F)
半複式高層 UPPER SPLIT-LEVEL



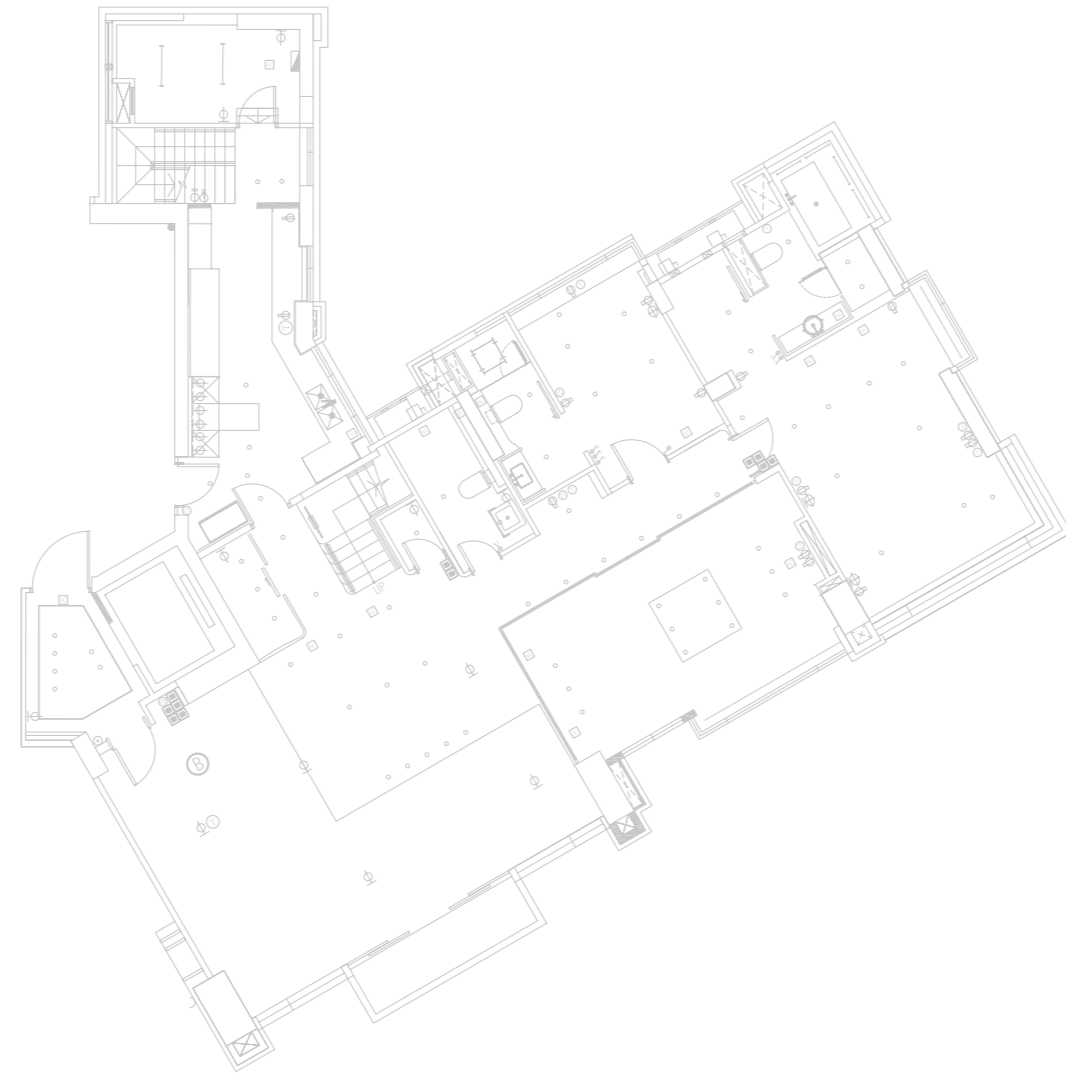
22. 裝置、裝修物料及設備 FITTINGS, FINISHES AND APPLIANCES

機電裝置平面圖 ELECTRICAL & MECHANICAL PROVISION PLAN

45樓(亦稱68樓)A單位
UNIT A on 45/F (ALSO KNOWN AS 68/F)
複式低層 LOWER DUPLEX

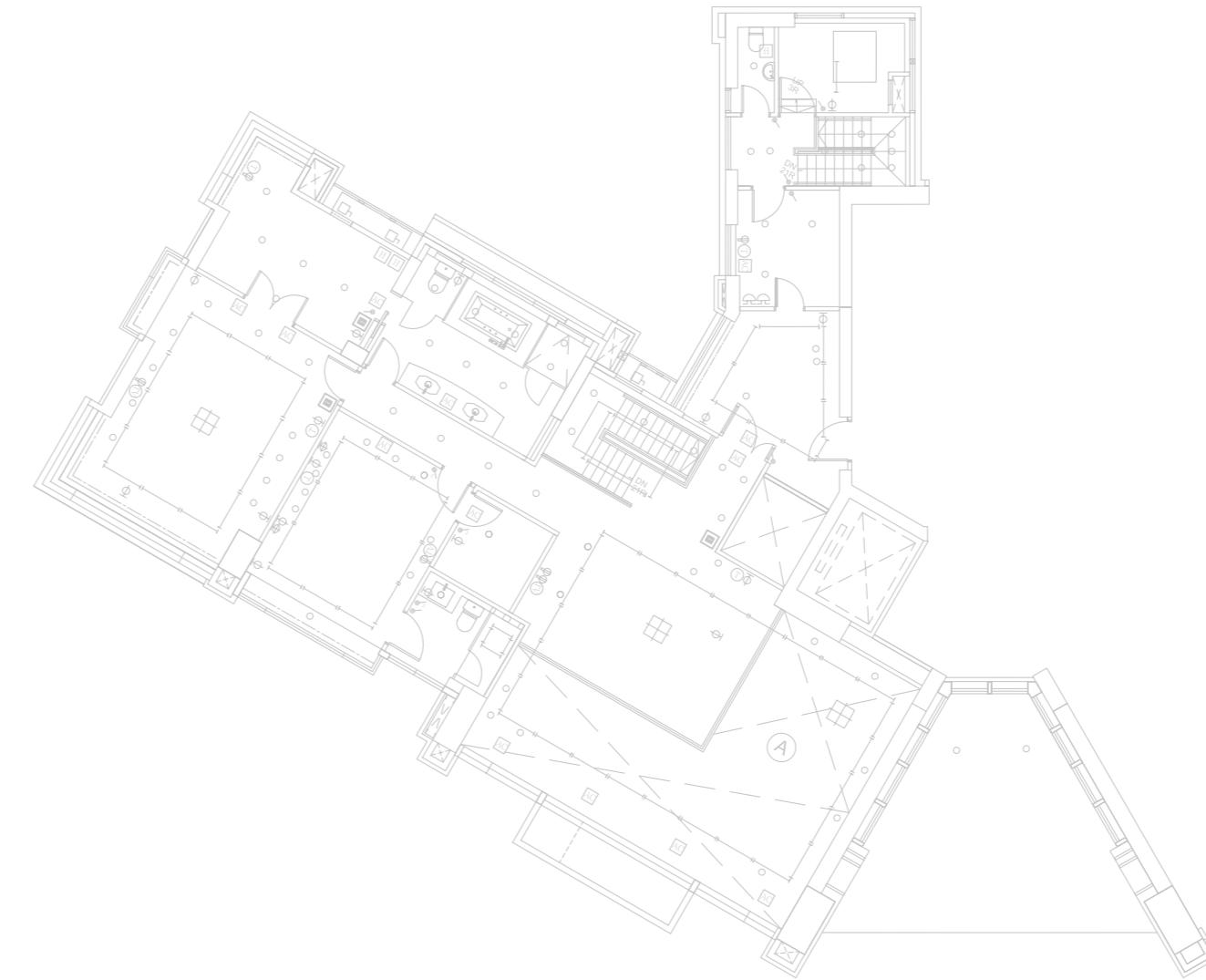


45樓(亦稱68樓)B單位
UNIT B on 45/F (ALSO KNOWN AS 68/F)
複式低層 LOWER DUPLEX



機電裝置平面圖 ELECTRICAL & MECHANICAL PROVISION PLAN

45樓(亦稱68樓)A單位
UNIT A on 45/F (ALSO KNOWN AS 68/F)
複式高層 UPPER DUPLEX



45樓(亦稱68樓)B單位
UNIT B on 45/F (ALSO KNOWN AS 68/F)
複式高層 UPPER DUPLEX

