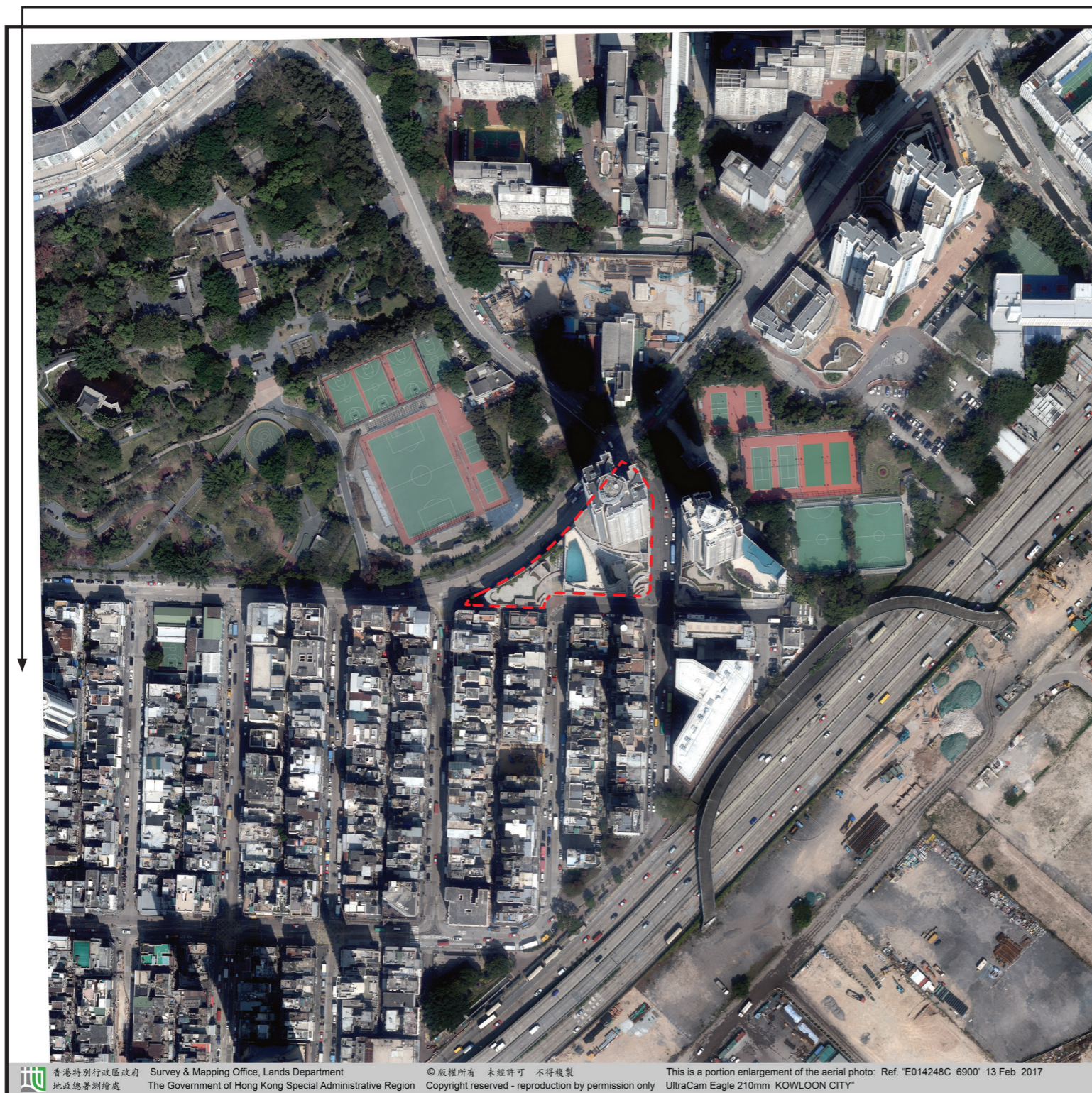



# AERIAL PHOTOGRAPH OF THE DEVELOPMENT 發展項目的鳥瞰照片



This blank area falls outside the coverage of the relevant Aerial Photograph  
鳥瞰照片並不覆蓋本空白範圍

 Location of the Development  
發展項目位置

Source of information:  
Adopted from part of the aerial photo taken by the Survey and Mapping Office of the Lands Department at a flying height of 6,900 feet, photo no. E014248C, dated 13 February 2017.

資料來源：  
摘錄自地政總署測繪處在6,900呎飛行高度拍攝之部份鳥瞰照片，照片編號為E014248C，飛行日期為2017年2月13日。

Remarks:  
Due to technical reason, the aerial photograph shows areas beyond 250 metres from the boundary of the Development.

備註：  
因技術性問題的限制，鳥瞰照片顯示超越距離發展項目的界線250米的範圍。


Survey and Mapping Office, Lands Department, The Government of HKSAR © Copyright reserved - reproduction by permission only.  
香港特別行政區政府地政總署測繪處©版權所有，未經許可，不得複製。



# AERIAL PHOTOGRAPH OF THE DEVELOPMENT 發展項目的鳥瞰照片



This blank area falls outside the coverage of the relevant Aerial Photograph  
鳥瞰照片並不覆蓋空白範圍

 Location of the Development  
發展項目位置

Source of information:  
Adopted from part of the aerial photo taken by the Survey and Mapping Office of the Lands Department at a flying height of 6,900 feet, photo no. E014159C, dated 13 February 2017.

資料來源：  
摘錄自地政總署測繪處在6,900呎飛行高度拍攝之部份鳥瞰照片，照片編號為E014159C，飛行日期為2017年2月13日。

Remarks:  
Due to technical reason, the aerial photograph shows areas beyond 250 metres from the boundary of the Development.

備註：  
因技術性問題的限制，鳥瞰照片顯示超越距離發展項目的界線250米的範圍。