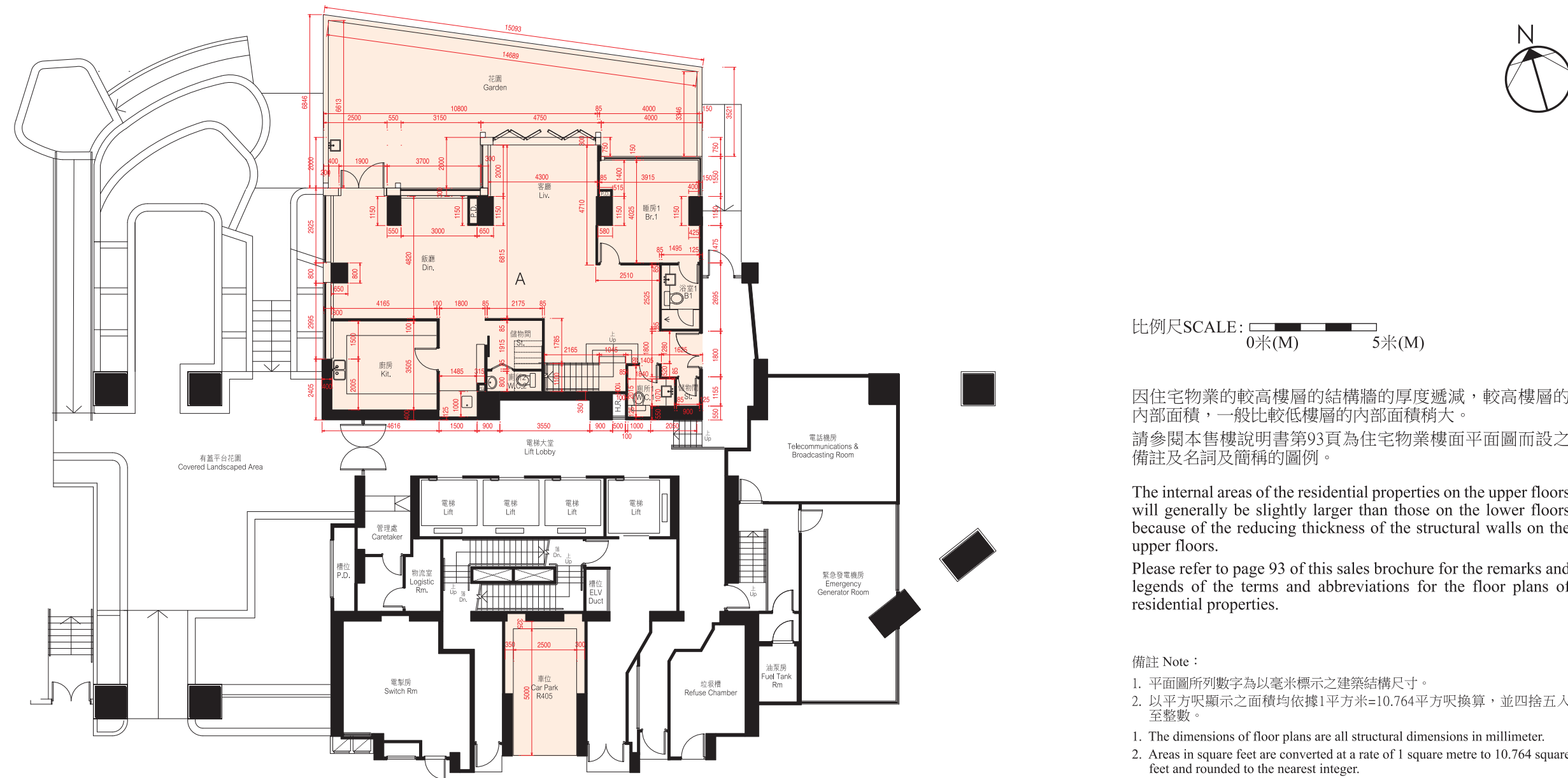


10. 期數的住宅物業的樓面平面圖 FLOOR PLANS OF RESIDENTIAL PROPERTIES IN THE PHASE

第25座地下平面圖 (複式低層) BLOCK 25 — GROUND FLOOR PLAN (LOWER DUPLEX)



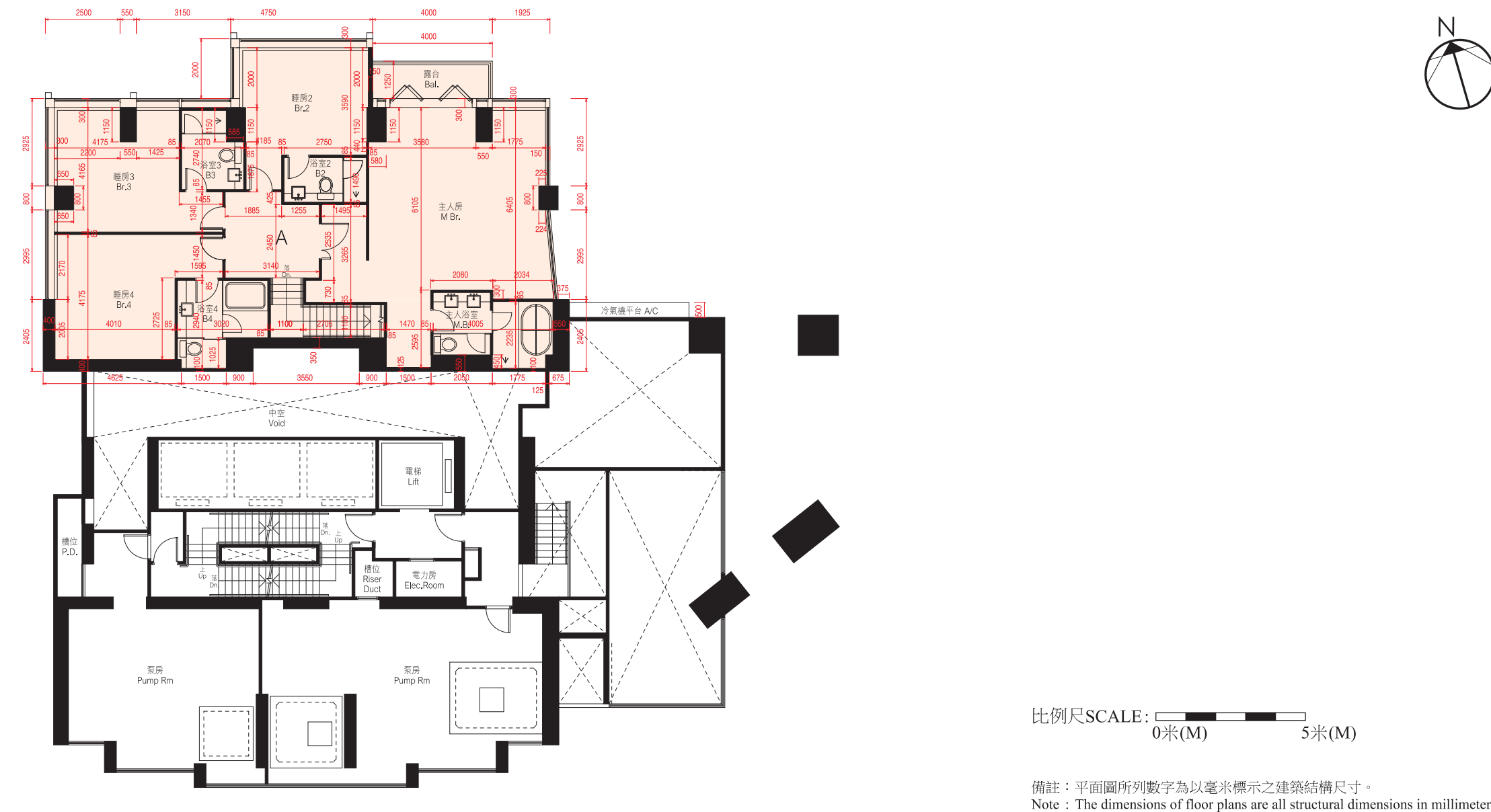
註釋 Explanatory Note :

貼鄰住客停車位的面積(不計算入停車位面積或實用面積)：地下A單位為3,220平方米(35平方呎)。

Area adjoining residential parking space (not included in the area of parking space or saleable area):
Flat A on G/F is 3,220 sq.m. (35 sq.ft.).

每個住宅物業 Each Residential Property	單位 Unit 樓層 Floor	A
層與層之間的高度 Floor to Floor Height (毫米 mm)	G/F	3500
樓板(不包括灰泥)的厚度 Thickness of Floor Slab (excluding plaster) (毫米 mm)	G/F	150, 175, 200, 250, 350

第25座1樓平面圖 (複式高層) BLOCK 25 — 1/F FLOOR PLAN (UPPER DUPLEX)



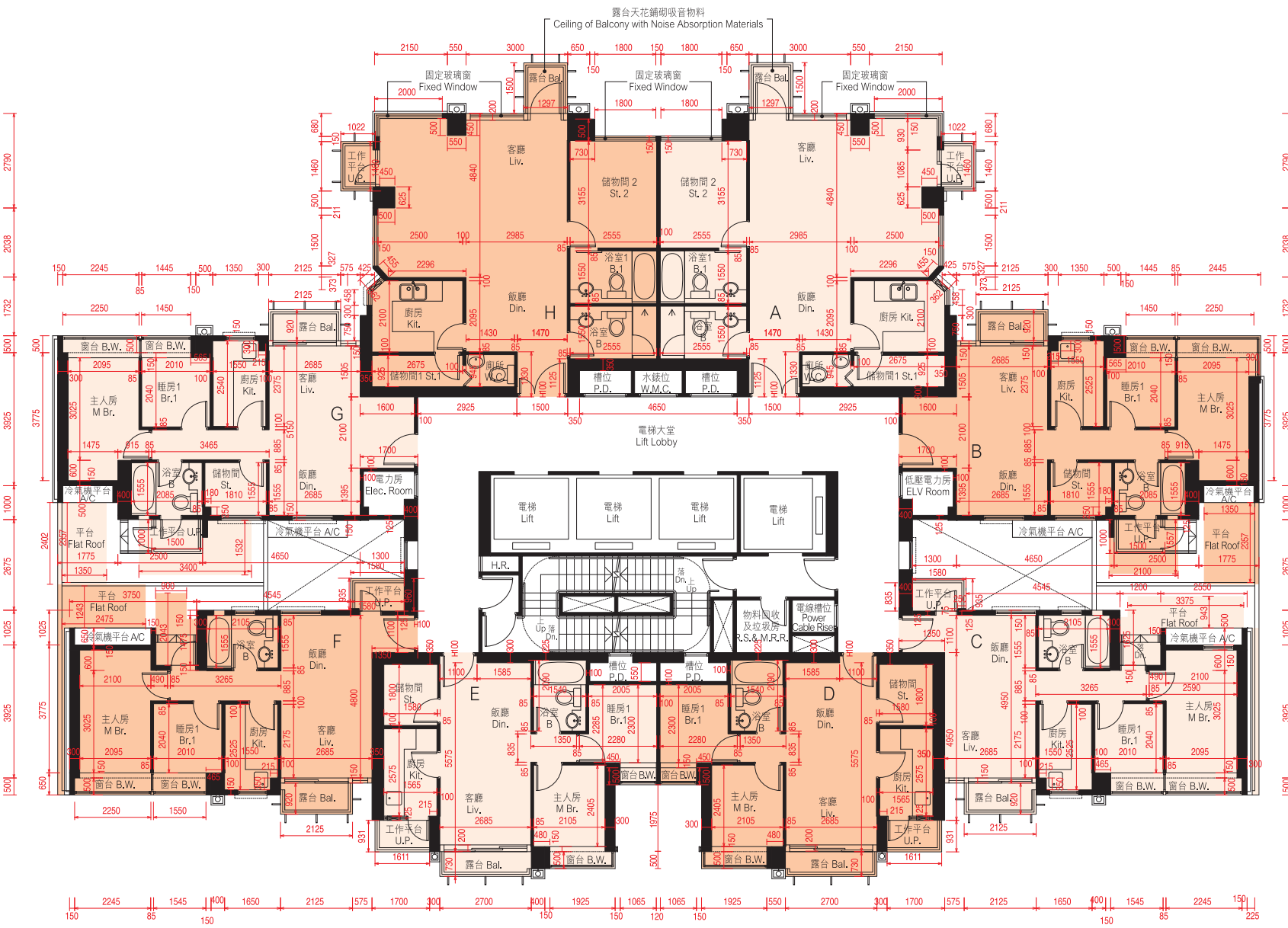
因住宅物業的較高樓層的結構牆的厚度遞減，較高樓層的內部面積，一般比較低樓層的內部面積稍大。
請參閱本售樓說明書第93頁為住宅物業樓面平面圖而設之備註及名詞及簡稱的圖例。

The internal areas of the residential properties on the upper floors will generally be slightly larger than those on the lower floors because of the reducing thickness of the structural walls on the upper floors.
Please refer to page 93 of this sales brochure for the remarks and legends of the terms and abbreviations for the floor plans of residential properties.

每個住宅物業 Each Residential Property	單位 Unit 樓層 Floor	A
層與層之間的高度 Floor to Floor Height (毫米 mm)	1/F	3250
樓板(不包括灰泥)的厚度 Thickness of Floor Slab (excluding plaster) (毫米 mm)	1/F	150, 225, 250, 275

10. 期數的住宅物業的樓面平面圖 FLOOR PLANS OF RESIDENTIAL PROPERTIES IN THE PHASE

第25座3樓平面圖 BLOCK 25 — 3/F FLOOR PLAN



比例尺SCALE: 0米(M) 5米(M)

因住宅物業的較高樓層的結構牆的厚度遞減，較高樓層的內部面積，一般比較低樓層的內部面積稍大。
請參閱本售樓說明書第93頁為住宅物業樓面平面圖而設之備註及名詞及簡稱的圖例。

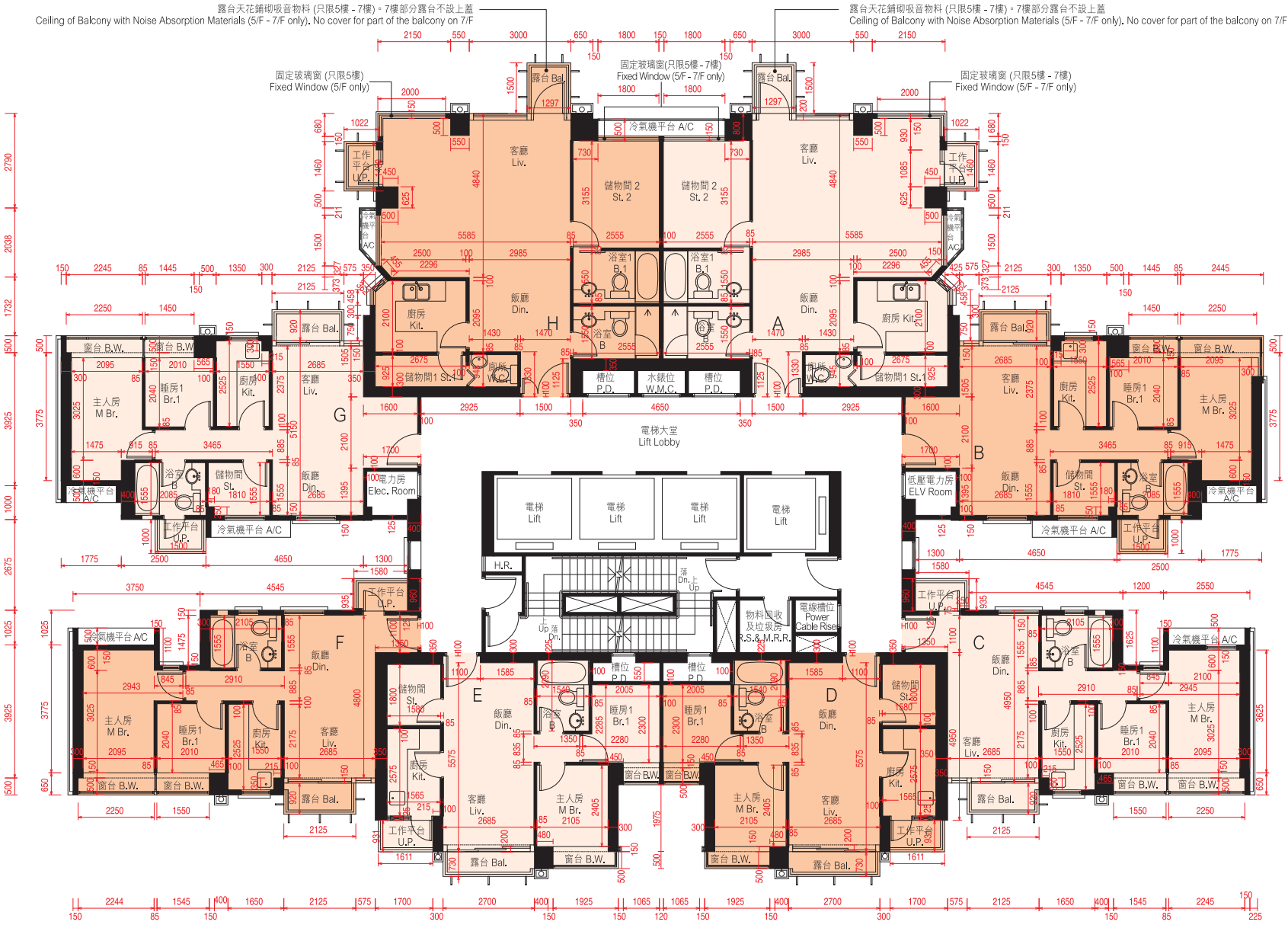
The internal areas of the residential properties on the upper floors will generally be slightly larger than those on the lower floors because of the reducing thickness of the structural walls on the upper floors.

Please refer to page 93 of this sales brochure for the remarks and legends of the terms and abbreviations for the floor plans of residential properties.

平台空白位置為供維修大廈設備使用的公用地方。
Blank areas on the flat roof are common areas for building facility maintenance.

備註：平面圖所列數字為以毫米標示之建築結構尺寸。
Note : The dimensions of floor plans are all structural dimensions in millimeter.

第25座5樓 - 7樓平面圖 BLOCK 25 — 5/F - 7/F FLOOR PLAN



比例尺SCALE: 0米(M) 5米(M)

因住宅物業的較高樓層的結構牆的厚度遞減，較高樓層的內部面積，一般比較低樓層的內部面積稍大。
請參閱本售樓說明書第93頁為住宅物業樓面平面圖而設之備註及名詞及簡稱的圖例。

The internal areas of the residential properties on the upper floors will generally be slightly larger than those on the lower floors because of the reducing thickness of the structural walls on the upper floors.

Please refer to page 93 of this sales brochure for the remarks and legends of the terms and abbreviations for the floor plans of residential properties.

備註：平面圖所列數字為以毫米標示之建築結構尺寸。
Note : The dimensions of floor plans are all structural dimensions in millimeter.

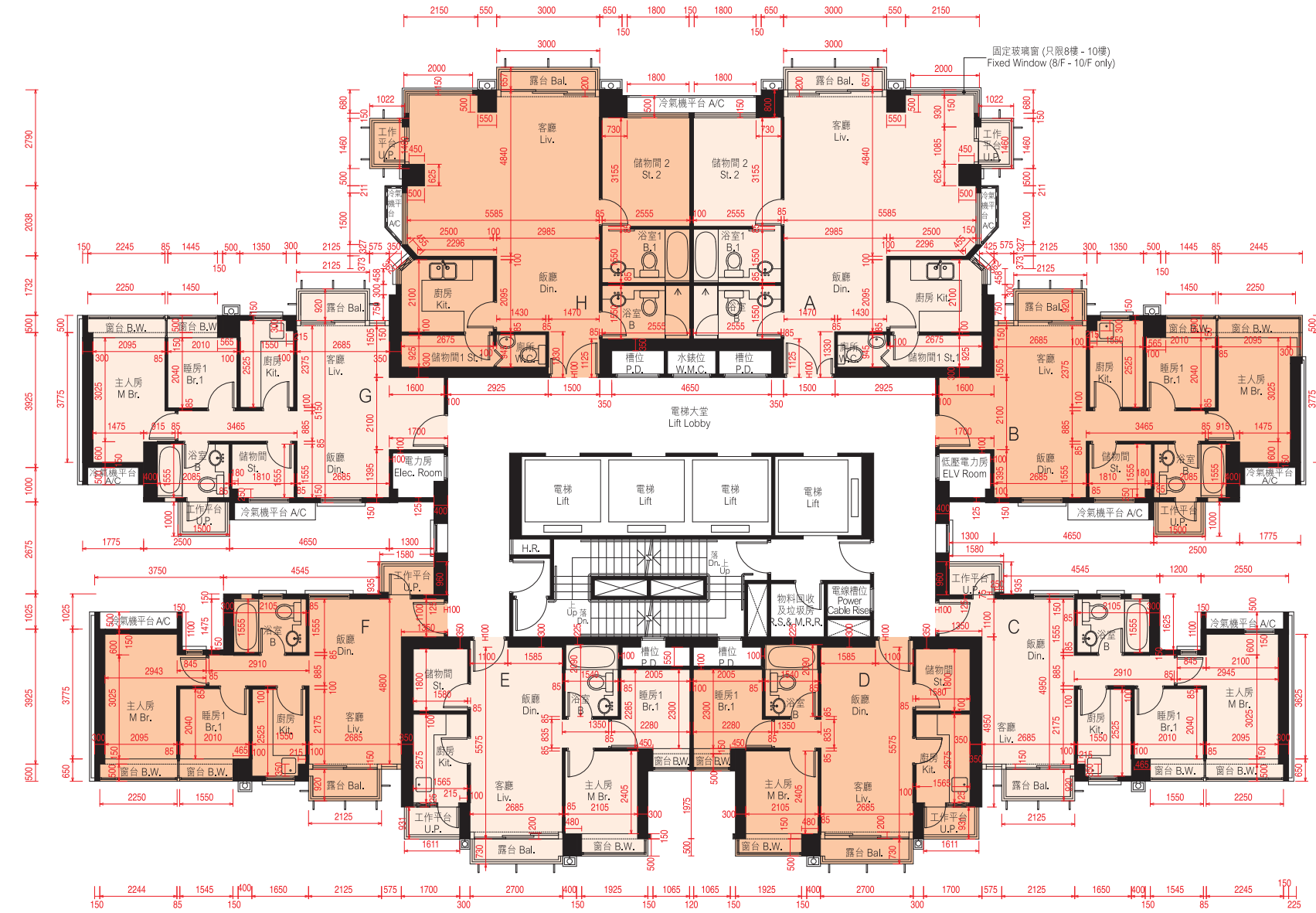
每個住宅物業 Each Residential Property	樓層 Floor	單位 Unit	A	B	C	D	E	F	G	H
層與層之間的高度 Floor to Floor Height (毫米 mm)	3/F		2800, 3150	3150	2950, 3150	3150	3150	2950, 3150	3150	2800, 3150
樓板(不包括灰泥)的厚度 Thickness of Floor Slab (excluding plaster) (毫米 mm)	3/F		200, 225	150, 200	150, 200	200, 350	200, 350	150, 200	150, 200	200, 225

每個住宅物業 Each Residential Property	樓層 Floor	單位 Unit	A	B	C	D	E	F	G	H
層與層之間的高度 Floor to Floor Height (毫米 mm)	5/F - 7/F		3150	3150	3150	3150	3150	3150	3150	3150
樓板(不包括灰泥)的厚度 Thickness of Floor Slab (excluding plaster) (毫米 mm)	5/F - 7/F		200, 225	150, 200	150, 200	200, 350	200, 350	150, 200	150, 200	200, 225

10. 期數的住宅物業的樓面平面圖 FLOOR PLANS OF RESIDENTIAL PROPERTIES IN THE PHASE

第25座8樓 - 11樓及16樓 - 19樓平面圖 BLOCK 25 — 8/F - 11/F & 16/F - 19/F FLOOR PLAN

此版乃特意留白 This page is deliberately left in blank



比例尺SCALE: 0米(M) 5米(M)

因住宅物業的較高樓層的結構牆的厚度遞減，較高樓層的內部面積，一般比較低樓層的內部面積稍大。
請參閱本售樓說明書第93頁為住宅物業樓面平面圖而設之備註及名詞及簡稱的圖例。

The internal areas of the residential properties on the upper floors will generally be slightly larger than those on the lower floors because of the reducing thickness of the structural walls on the upper floors.

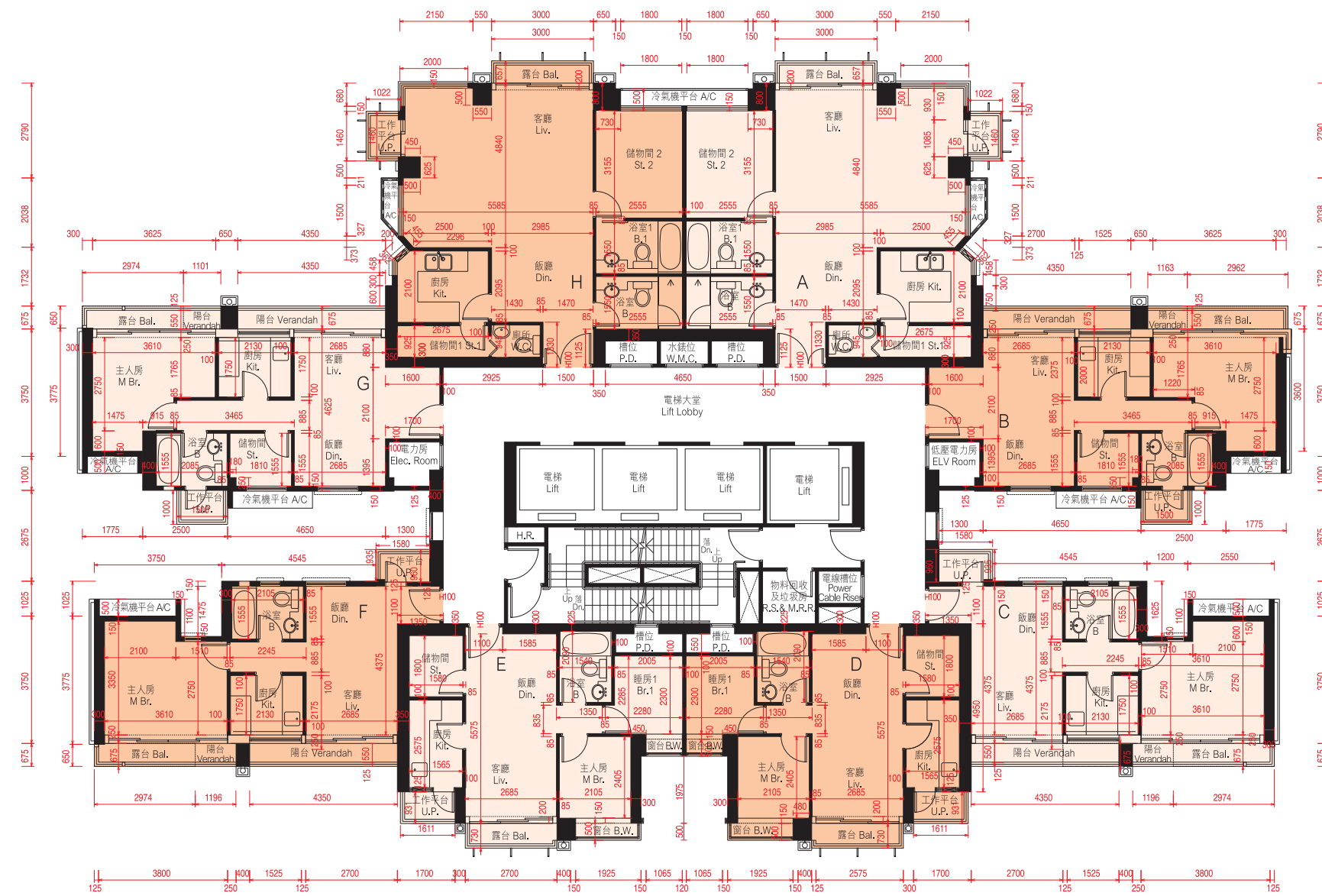
Please refer to page 93 of this sales brochure for the remarks and legends of the terms and abbreviations for the floor plans of residential properties.

備註：平面圖所列數字為以毫米標示之建築結構尺寸。
Note : The dimensions of floor plans are all structural dimensions in millimeter.

	樓層 Floor	單位 Unit	A	B	C	D	E	F	G	H
層與層之間的高度 Floor to Floor Height (毫米 mm)	8/F - 10/F, 16/F - 18/F		3150	3150	3150	3150	3150	3150	3150	3150
	11/F		3150	2950, 3150	2950, 3150	3150	3150	2950, 3150	2950, 3150	3150
	19/F		3150, 3300	3300	3300	3300	3300	3300	3300	3300
樓板(不包括灰泥)的厚度 Thickness of Floor Slab (excluding plaster) (毫米 mm)	8/F - 10/F, 16/F - 18/F		200, 225	150, 200	150, 200	200, 350	200, 350	150, 200	150, 200	200, 225
	11/F		200, 225	150, 200	150, 200	150, 200	150, 200	150, 200	150, 200	200, 225
	19/F		200, 225, 400	150, 200	150, 200	150, 200	150, 200	150, 200	150, 200	150, 200

10. 期數的住宅物業的樓面平面圖 FLOOR PLANS OF RESIDENTIAL PROPERTIES IN THE PHASE

第25座12樓平面圖 BLOCK 25 — 12/F FLOOR PLAN



比例尺SCALE: 0米(M) 5米(M)

因住宅物業的較高樓層的結構牆的厚度遞減，較高樓層的內部面積，一般比較低樓層的內部面積稍大。
請參閱本售樓說明書第93頁為住宅物業樓面平面圖而設之備註及名詞及簡稱的圖例。

The internal areas of the residential properties on the upper floors will generally be slightly larger than those on the lower floors because of the reducing thickness of the structural walls on the upper floors.

Please refer to page 93 of this sales brochure for the remarks and legends of the terms and abbreviations for the floor plans of residential properties.

備註：平面圖所列數字為以毫米標示之建築結構尺寸。
Note : The dimensions of floor plans are all structural dimensions in millimeter.

每個住宅物業 Each Residential Property	單位 Unit	A	B	C	D	E	F	G	H
層與層之間的高度 Floor to Floor Height (毫米 mm)	12/F	3150	3150	3150	3150	3150	3150	3150	3150
樓板(不包括灰泥)的厚度 Thickness of Floor Slab (excluding plaster) (毫米 mm)	12/F	200, 225	150, 200	150, 200	150, 200	150, 200	150, 200	150, 200	200, 225

第25座15樓平面圖 BLOCK 25 — 15/F FLOOR PLAN



比例尺SCALE: 0米(M) 5米(M)

因住宅物業的較高樓層的結構牆的厚度遞減，較高樓層的內部面積，一般比較低樓層的內部面積稍大。
請參閱本售樓說明書第93頁為住宅物業樓面平面圖而設之備註及名詞及簡稱的圖例。

The internal areas of the residential properties on the upper floors will generally be slightly larger than those on the lower floors because of the reducing thickness of the structural walls on the upper floors.

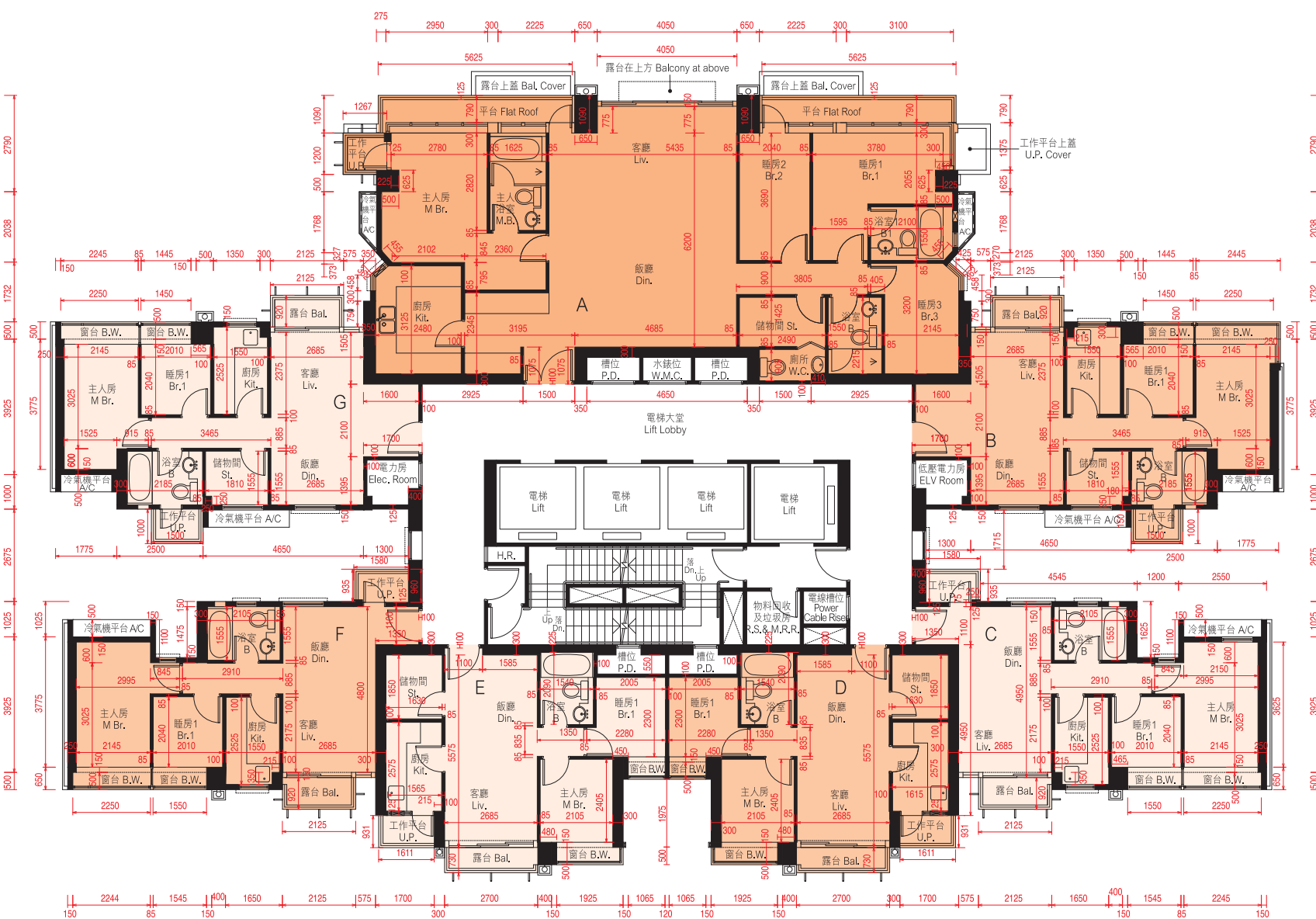
Please refer to page 93 of this sales brochure for the remarks and legends of the terms and abbreviations for the floor plans of residential properties.

備註：平面圖所列數字為以毫米標示之建築結構尺寸。
Note : The dimensions of floor plans are all structural dimensions in millimeter.

每個住宅物業 Each Residential Property	單位 Unit	A	B	C	D	E	F	G	H
層與層之間的高度 Floor to Floor Height (毫米 mm)	15/F	3150	3150	3150	3150	3150	3150	3150	3150
樓板(不包括灰泥)的厚度 Thickness of Floor Slab (excluding plaster) (毫米 mm)	15/F	200, 225	150, 200	150, 200	150, 200	150, 200	150, 200	150, 200	200, 225

10. 期數的住宅物業的樓面平面圖 FLOOR PLANS OF RESIDENTIAL PROPERTIES IN THE PHASE

第25座20樓平面圖 BLOCK 25 — 20/F FLOOR PLAN



比例尺SCALE: 0米(M) 5米(M)

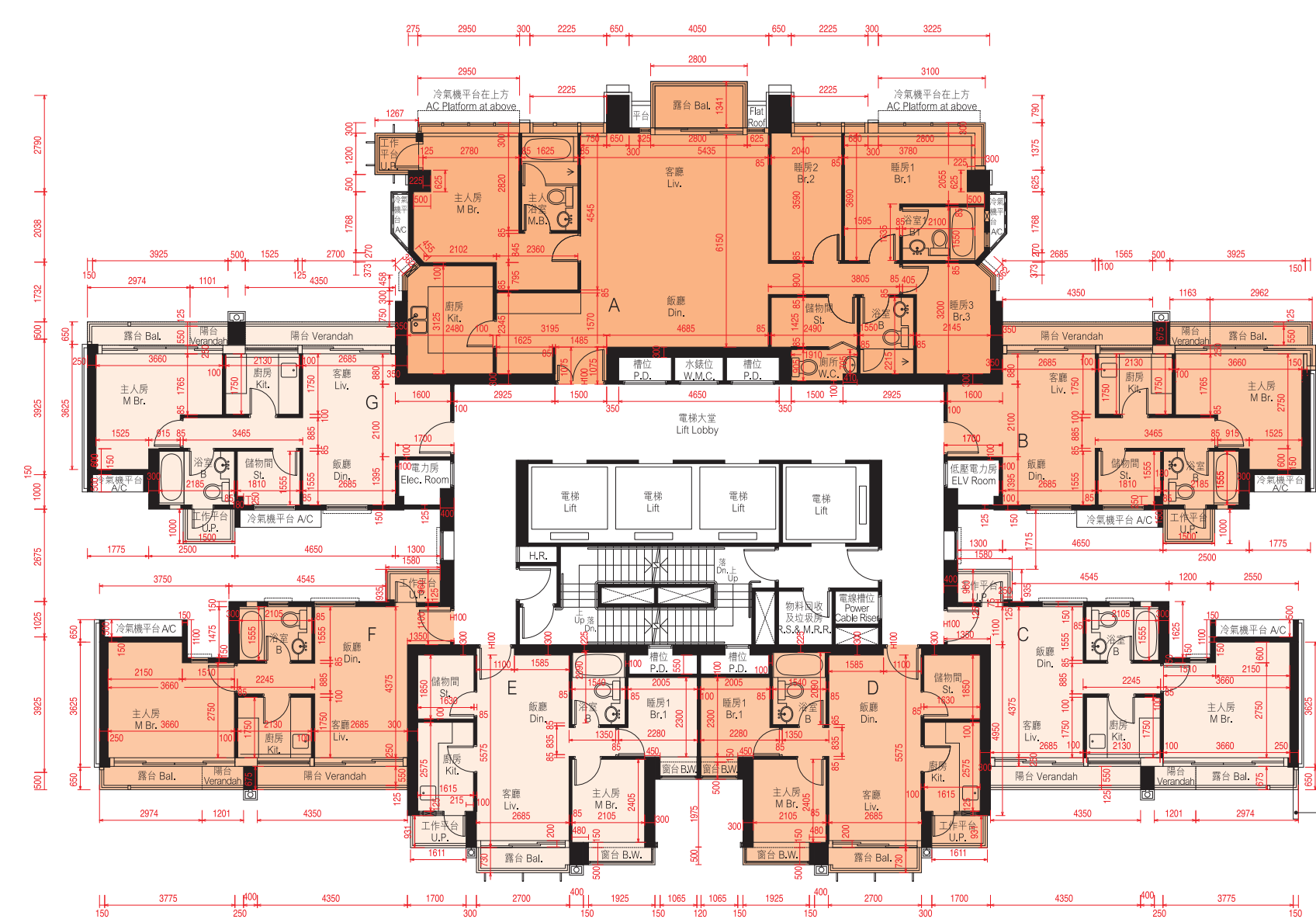
因住宅物業的較高樓層的結構牆的厚度遞減，較高樓層的內部面積，一般比較低樓層的內部面積稍大。
請參閱本售樓說明書第93頁為住宅物業樓面平面圖而設之備註及名詞及簡稱的圖例。

The internal areas of the residential properties on the upper floors will generally be slightly larger than those on the lower floors because of the reducing thickness of the structural walls on the upper floors.

Please refer to page 93 of this sales brochure for the remarks and legends of the terms and abbreviations for the floor plans of residential properties.

備註：平面圖所列數字為以毫米標示之建築結構尺寸。
Note : The dimensions of floor plans are all structural dimensions in millimeter.

第25座21樓平面圖 BLOCK 25 — 21/F FLOOR PLAN



比例尺SCALE: 0米(M) 5米(M)

因住宅物業的較高樓層的結構牆的厚度遞減，較高樓層的內部面積，一般比較低樓層的內部面積稍大。
請參閱本售樓說明書第93頁為住宅物業樓面平面圖而設之備註及名詞及簡稱的圖例。

The internal areas of the residential properties on the upper floors will generally be slightly larger than those on the lower floors because of the reducing thickness of the structural walls on the upper floors.

Please refer to page 93 of this sales brochure for the remarks and legends of the terms and abbreviations for the floor plans of residential properties.

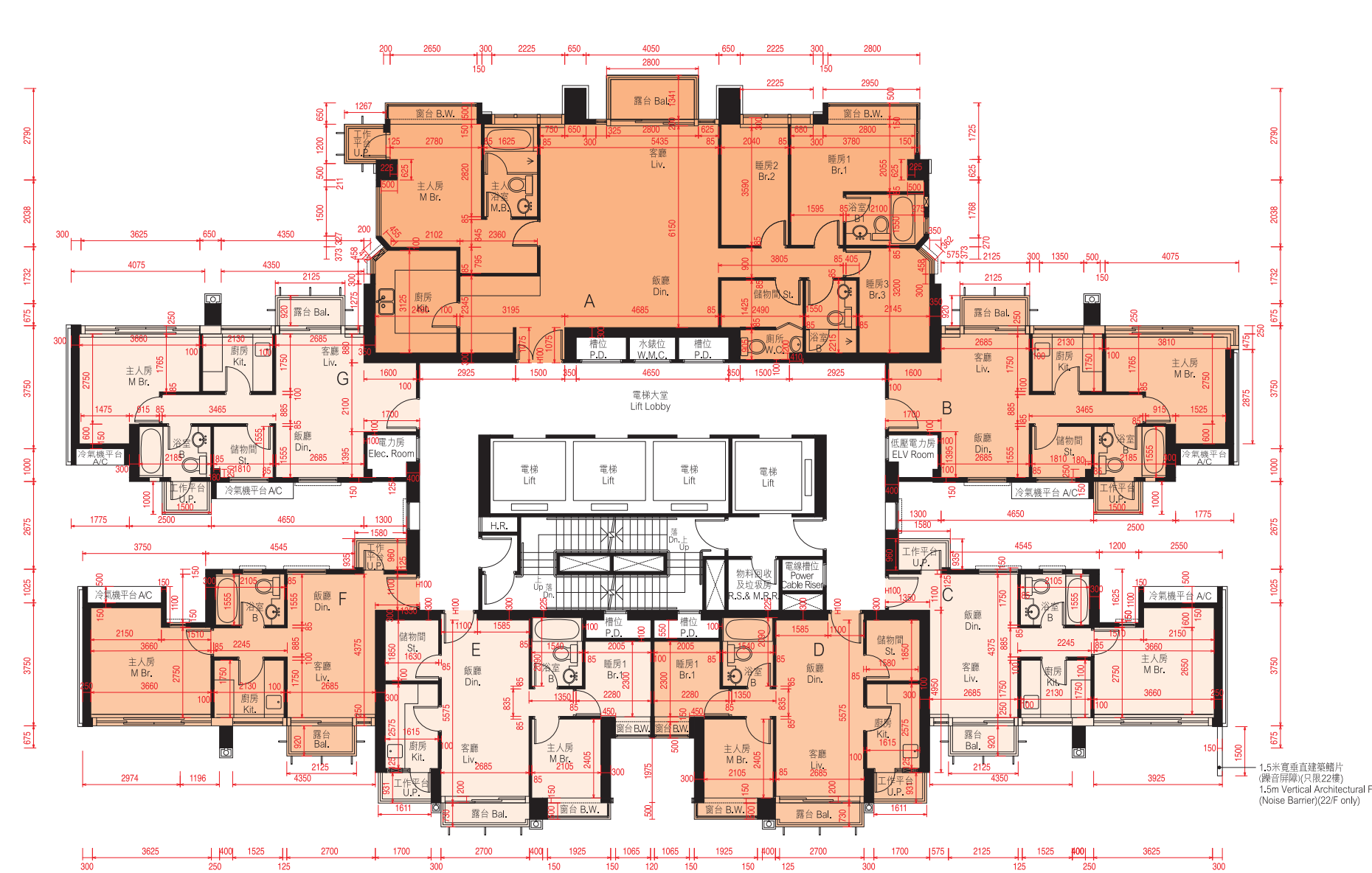
備註：平面圖所列數字為以毫米標示之建築結構尺寸。
Note : The dimensions of floor plans are all structural dimensions in millimeter.

每個住宅物業 Each Residential Property	樓層 Floor	單位 Unit	A	B	C	D	E	F	G
層與層之間的高度 Floor to Floor Height (毫米 mm)	20/F		2950, 3300	2950, 3100, 3300	2950, 3100, 3300	2950, 3100, 3300	2950, 3100, 3300	2950, 3100, 3300	2950, 3100, 3300
樓板(不包括灰泥)的厚度 Thickness of Floor Slab (excluding plaster) (毫米 mm)	20/F		200, 225, 350	150, 200	150, 200	150, 200	150, 200	150, 200	150, 200

每個住宅物業 Each Residential Property	樓層 Floor	單位 Unit	A	B	C	D	E	F	G
層與層之間的高度 Floor to Floor Height (毫米 mm)	21/F		3150	3150	3150	3150	3150	3150	3150
樓板(不包括灰泥)的厚度 Thickness of Floor Slab (excluding plaster) (毫米 mm)	21/F		200, 225, 275	150, 200	150, 200	150, 200	150, 200	150, 200	150, 200

10. 期數的住宅物業的樓面平面圖 FLOOR PLANS OF RESIDENTIAL PROPERTIES IN THE PHASE

第25座22樓，30樓及38樓平面圖 BLOCK 25 — 22/F, 30/F & 38/F FLOOR PLAN



比例尺SCALE: 0米(M) 5米(M)

因住宅物業的較高樓層的結構牆的厚度遞減，較高樓層的內部面積，一般比較低樓層的內部面積稍大。
請參閱本售樓說明書第93頁為住宅物業樓面平面圖而設之備註及名詞及簡稱的圖例。

The internal areas of the residential properties on the upper floors will generally be slightly larger than those on the lower floors because of the reducing thickness of the structural walls on the upper floors.
Please refer to page 93 of this sales brochure for the remarks and legends of the terms and abbreviations for the floor plans of residential properties.

- # 包括800毫米厚之結構轉換層。
- * 包括1100毫米厚之結構轉換層及混凝土填充層。
- # Including 800mm thick transfer plate.
- * Including 1100mm thick transfer plate and mass concrete fill.

備註：平面圖所列數字為以毫米標示之建築結構尺寸。
Note: The dimensions of floor plans are all structural dimensions in millimeter.

第25座23樓及25樓 - 26樓平面圖 BLOCK 25 — 23/F & 25/F - 26/F FLOOR PLAN



比例尺SCALE: 0米(M) 5米(M)

因住宅物業的較高樓層的結構牆的厚度遞減，較高樓層的內部面積，一般比較低樓層的內部面積稍大。
請參閱本售樓說明書第93頁為住宅物業樓面平面圖而設之備註及名詞及簡稱的圖例。

The internal areas of the residential properties on the upper floors will generally be slightly larger than those on the lower floors because of the reducing thickness of the structural walls on the upper floors.
Please refer to page 93 of this sales brochure for the remarks and legends of the terms and abbreviations for the floor plans of residential properties.

備註：平面圖所列數字為以毫米標示之建築結構尺寸。
Note: The dimensions of floor plans are all structural dimensions in millimeter.

每個住宅物業 Each Residential Property	單位 Unit	A	B	C	D	E	F	G
層與層之間的高度 Floor to Floor Height (毫米 mm)	22/F & 30/F	3150	3150	3150	3150	3150	3150	3150
	38/F	3800 [#] , 4100*	3250, 3350, 3800 [#] , 4100*	3800 [#] , 4100*	3800 [#] , 4100*	3800 [#] , 4100*	3800 [#] , 4100*	3500, 3800 [#] , 4100*
樓板(不包括灰泥)的厚度 Thickness of Floor Slab (excluding plaster) (毫米 mm)	22/F & 30/F	200, 225, 275	150, 200	150, 200	150, 200	150, 200	150, 200	150, 200
	38/F	225, 800, 1100	150, 200, 250, 350, 800, 1100	150, 200, 250, 800, 1100	200, 800, 1100	200, 800, 1100	150, 200, 250, 800, 1100	150, 200, 800, 1100

每個住宅物業 Each Residential Property	單位 Unit	A	B	C	D	E	F	G
層與層之間的高度 Floor to Floor Height (毫米 mm)	23/F & 25/F - 26/F	3150	3150	3150	3150	3150	3150	3150
樓板(不包括灰泥)的厚度 Thickness of Floor Slab (excluding plaster) (毫米 mm)	23/F & 25/F - 26/F	200, 225, 275	150, 200	150, 200	150, 200	150, 200	150, 200	150, 200

10. 期數的住宅物業的樓面平面圖 FLOOR PLANS OF RESIDENTIAL PROPERTIES IN THE PHASE

第25座27樓 - 28樓, 31樓 - 33樓及35樓 - 36樓平面圖 BLOCK 25 — 27/F - 28/F, 31/F - 33/F & 35/F - 36/F FLOOR PLAN



第25座29樓平面圖 BLOCK 25 — 29/F FLOOR PLAN

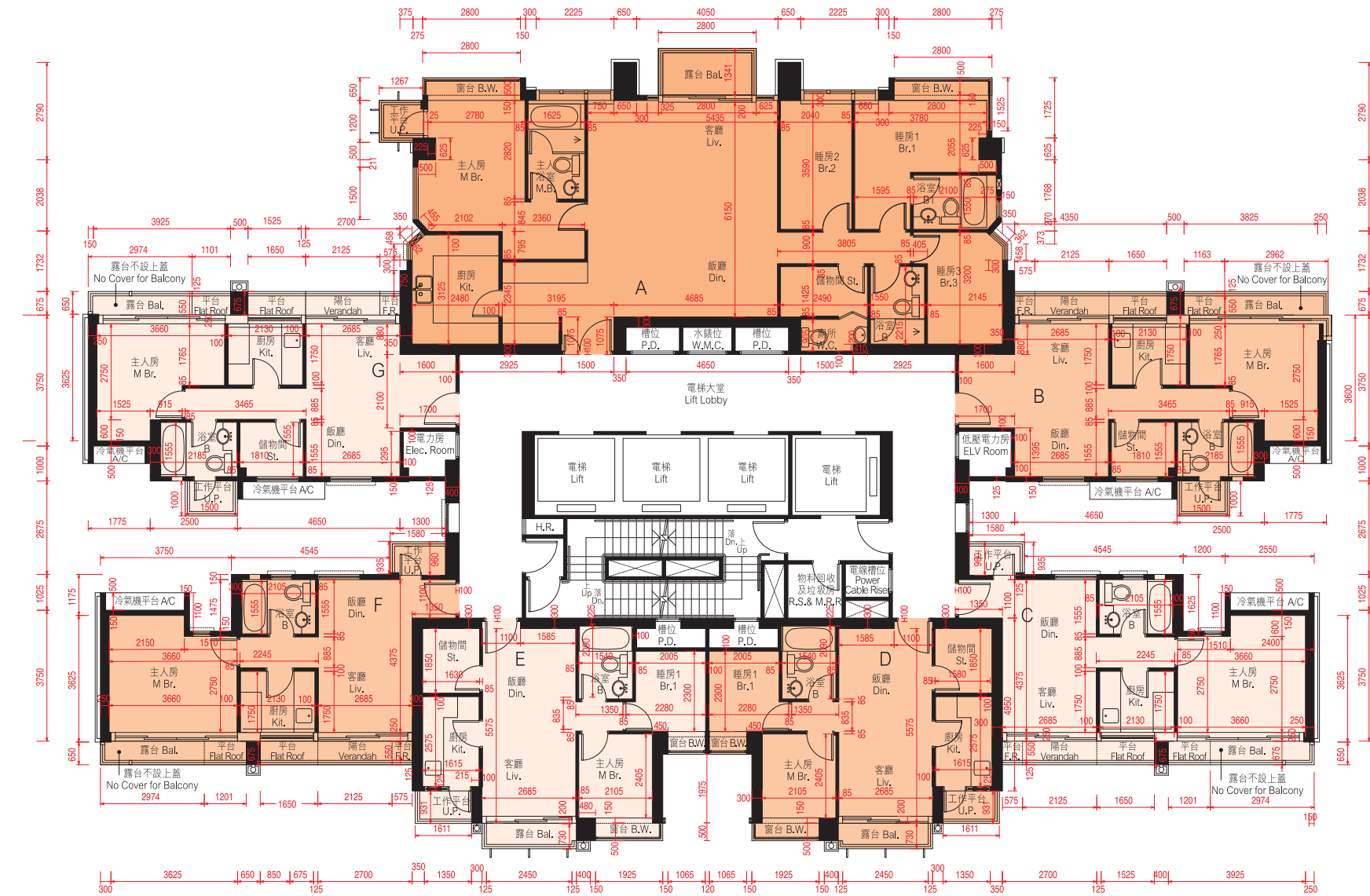


每個住宅物業 Each Residential Property	樓層 Floor	單位 Unit	A	B	C	D	E	F	G
層與層之間的高度 Floor to Floor Height (毫米 mm)	27/F, 31/F - 33/F & 35/F - 36/F		3150	3150	3150	3150	3150	3150	3150
	28/F		3100	3100	3100	3100	3100	3100	3100
樓板 (不包括灰泥) 的厚度 Thickness of Floor Slab (excluding plaster) (毫米 mm)	27/F, 31/F - 33/F & 35/F - 36/F		200, 225, 275	150, 200	150, 200	150, 200	150, 200	150, 200	150, 200
	28/F		200, 225, 275	150, 200	150, 200	150, 200	150, 200	150, 200	150, 200

每個住宅物業 Each Residential Property	樓層 Floor	單位 Unit	A	B	C	D	E	F	G
層與層之間的高度 Floor to Floor Height (毫米 mm)	29/F		3150	3150	3150	3150	3150	3150	3150
樓板 (不包括灰泥) 的厚度 Thickness of Floor Slab (excluding plaster) (毫米 mm)	29/F		200, 225, 275	150, 200	150, 200	150, 200	150, 200	150, 200	150, 200

10. 期數的住宅物業的樓面平面圖 FLOOR PLANS OF RESIDENTIAL PROPERTIES IN THE PHASE

第25座37樓平面圖 BLOCK 25 — 37/F FLOOR PLAN



比例尺SCALE: 0米(M) 5米(M)

因住宅物業的較高樓層的結構牆的厚度遞減，較高樓層的內部面積，一般比較低樓層的內部面積稍大。
請參閱本售樓說明書第93頁為住宅物業樓面平面圖而設之備註及名詞及簡稱的圖例。

The internal areas of the residential properties on the upper floors will generally be slightly larger than those on the lower floors because of the reducing thickness of the structural walls on the upper floors.

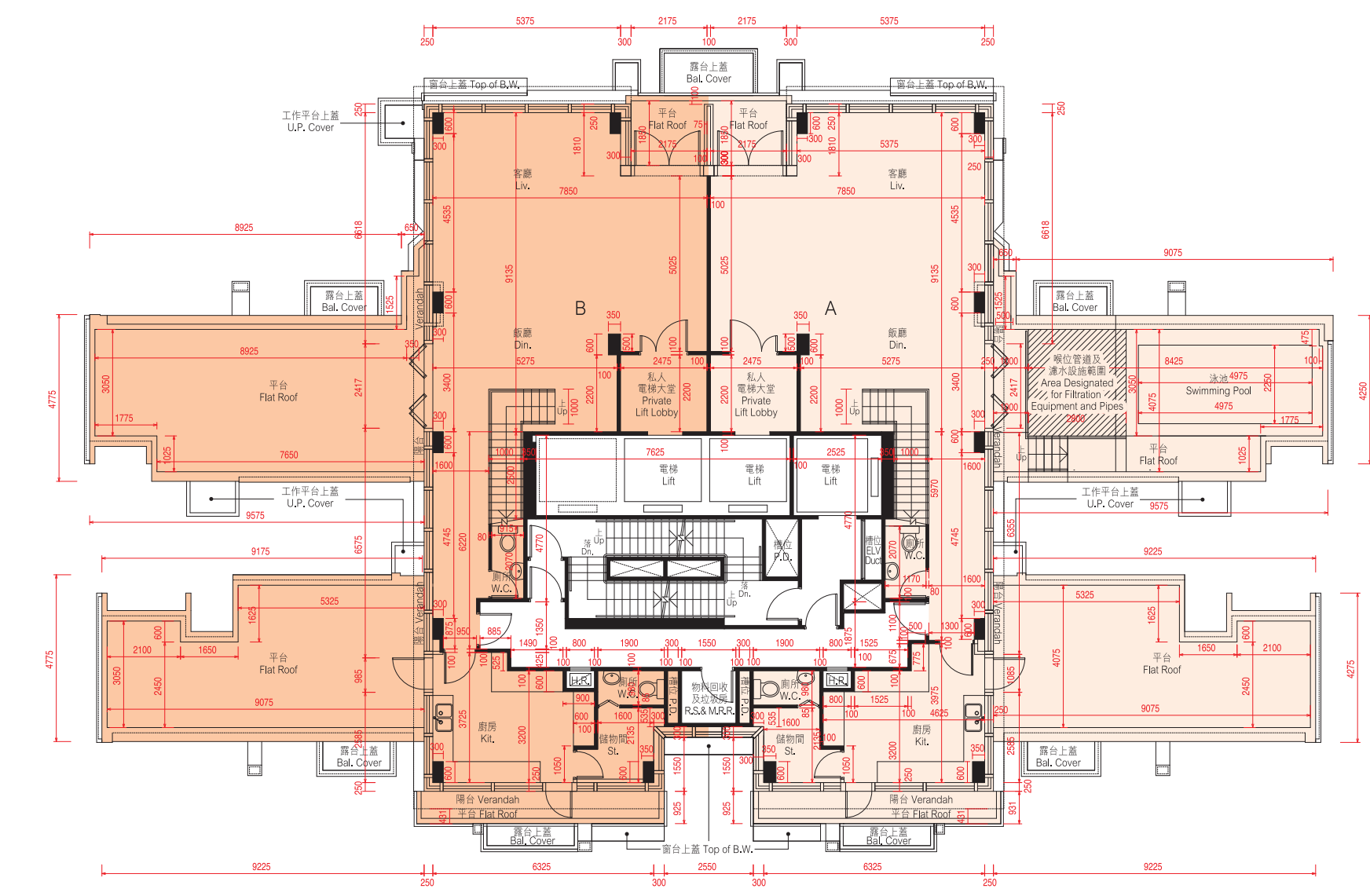
Please refer to page 93 of this sales brochure for the remarks and legends of the terms and abbreviations for the floor plans of residential properties.

備註：平面圖所列數字為以毫米標示之建築結構尺寸。
Note: The dimensions of floor plans are all structural dimensions in millimeter.



每個住宅物業 Each Residential Property	樓層 Floor	單位 Unit	A	B	C	D	E	F	G
層與層之間的高度 Floor to Floor Height (毫米 mm)	37/F		3150	3150	3150	3150	3150	3150	3150
樓板(不包括灰泥)的厚度 Thickness of Floor Slab (excluding plaster) (毫米 mm)	37/F		200, 225, 275	150, 200	150, 200	150, 200	150, 200	150, 200	150, 200

第25座39樓平面圖 (複式低層) BLOCK 25 — 39/F FLOOR PLAN (LOWER DUPLEX)



比例尺SCALE: 0米(M) 5米(M)

備註 Note:
1. 平面圖所列數字為以毫米標示之建築結構尺寸。
2. 以平方呎顯示之面積均依據1平方米=10.764平方呎換算，並四捨五入至整數。
1. The dimensions of floor plans are all structural dimensions in millimeter.
2. Areas in square feet are converted at a rate of 1 square metre to 10.764 square feet and rounded to the nearest integer.



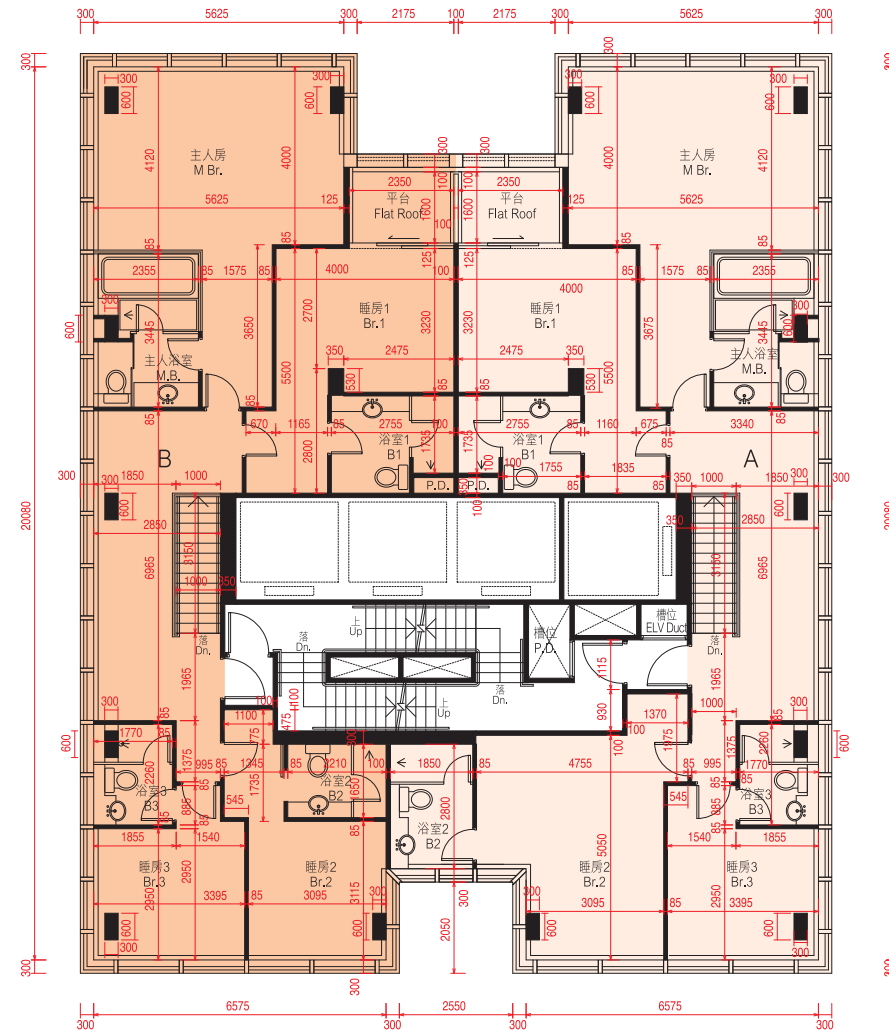
註釋 Explanatory Note:
已預留作喉位管道及濾水設施之沒有遮蓋的面積(已計算入平台面積): 39樓A單位為8,540平方米(92平方呎)。因住宅物業的較高樓層的結構牆的厚度遞減，較高樓層的內部面積，一般比較低樓層的內部面積稍大。請參閱本售樓說明書第93頁為住宅物業樓面平面圖而設之備註及名詞及簡稱的圖例。
Uncovered area designated for filtration equipment and pipes (included in the area of flat roof): Flat A on 39/F is 8,540 sq.m. (92 sq.ft.).
The internal areas of the residential properties on the upper floors will generally be slightly larger than those on the lower floors because of the reducing thickness of the structural walls on the upper floors.
Please refer to page 93 of this sales brochure for the remarks and legends of the terms and abbreviations for the floor plans of residential properties.

每個住宅物業 Each Residential Property	樓層 Floor	單位 Unit	A	B
層與層之間的高度 Floor to Floor Height (毫米 mm)	39/F		3340, 3500	3340, 3500
樓板(不包括灰泥)的厚度 Thickness of Floor Slab (excluding plaster) (毫米 mm)	39/F		140, 300	140, 300

10. 期數的住宅物業的樓面平面圖

FLOOR PLANS OF RESIDENTIAL PROPERTIES IN THE PHASE

第25座40樓平面圖 (複式高層) BLOCK 25 — 40/F FLOOR PLAN (UPPER DUPLEX)



比例尺SCALE: 0米(M) 5米(M)

因住宅物業的較高樓層的結構牆的厚度遞減，較高樓層的內部面積，一般比較低樓層的內部面積稍大。請參閱本售樓說明書第93頁為住宅物業樓面平面圖而設之備註及名詞及簡稱之圖例。

The internal areas of the residential properties on the upper floors will generally be slightly larger than those on the lower floors because of the reducing thickness of the structural walls on the upper floors.

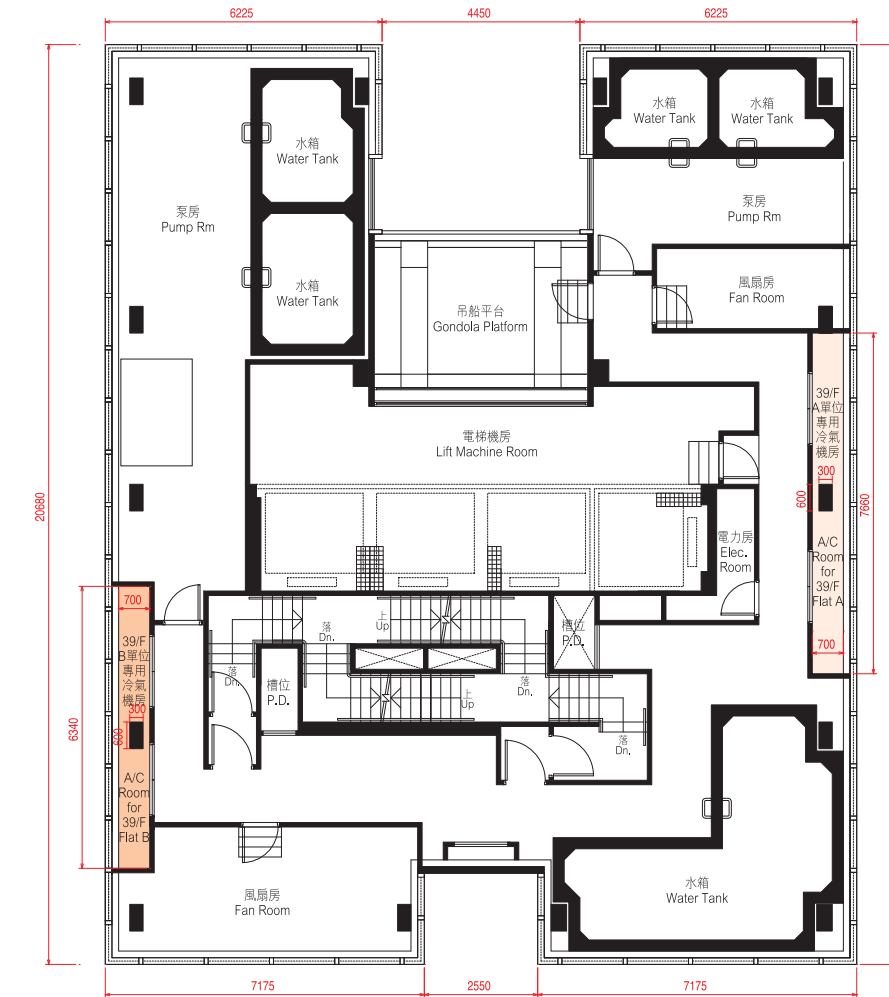
Please refer to page 93 of this sales brochure for the remarks and legends of the terms and abbreviations for the floor plans of residential properties.

每個住宅物業 Each Residential Property	單位 Unit 樓層 Floor	A	B
層與層之間的高度 Floor to Floor Height (毫米 mm)	40/F	3250, 3500	3250, 3500
樓板(不包括灰泥)的厚度 Thickness of Floor Slab (excluding plaster) (毫米 mm)	40/F	150, 200	150, 200

備註：平面圖所列數字為以毫米標示之建築結構尺寸。
Note: The dimensions of floor plans are all structural dimensions in millimeter.



第25座機電樓層平面圖 BLOCK 25 — ELECTRICAL & MECHANICAL FLOOR PLAN



比例尺SCALE: 0米(M) 5米(M)

每個住宅單位的層與層之間的高度：不適用。

每個住宅單位的樓板(不包括灰泥)的厚度：不適用。

因住宅物業的較高樓層的結構牆的厚度遞減，較高樓層的內部面積，一般比較低樓層的內部面積稍大。

The floor-to-floor height of each residential property: Not applicable.

The thickness of the floor slabs (excluding plaster) of each residential property: Not applicable.

The internal areas of the residential properties on the upper floors will generally be slightly larger than those on the lower floors because of the reducing thickness of the structural walls on the upper floors.

備註：平面圖所列數字為以毫米標示之建築結構尺寸。
Note: The dimensions of floor plans are all structural dimensions in millimeter.



名詞及簡稱之圖例 LEGENDS OF THE TERMS AND ABBREVIATIONS

A/C	= 冷氣機平台 Air-conditioning platform
B	= 浴室 Bathroom
B.W.	= 窗台 Bay window
Bal.	= 露台 Balcony
Bal. Cover	= 下層露台上蓋 Top of balcony cover
Br.	= 睡房 Bedroom
Din.	= 飯廳 Dining room
Dn.	= 落 Down
Elec. Room	= 電力房 Electricity room
ELV Duct	= 超低壓電線槽位 Extra-low voltage electricity duct
ELV Room	= 超低壓電力房 Extra-low voltage electricity room
F.R.	= 平台 Flat roof
H.R.	= 喉籠 Hose reel
Kit.	= 廚房 Kitchen
Liv.	= 客廳 Living room
Logistic Rm.	= 物流房 Logistic room
M.B.	= 主人房浴室 Master bathroom
M.Br.	= 主人房 Master bedroom
P.D.	= 管道槽位 Pipe duct
Riser Duct	= 電線槽位 Riser duct
R.S. & M.R.R.	= 垃圾及物料回收房 Refuse storage & material recovery room
St.	= 儲物間 Store
Switch Rm	= 電掣房 Switch room
Top of B.W.	= 下層窗台頂 Top of bay window
U.P.	= 工作平台 Utility platform
U.P. Cover	= 下層工作平台上蓋 Top of utility platform cover
Ver.	= 陽台 Verandah
W.C.	= 廁所 Washing chamber
W.M.C.	= 水錶位 Water meter cabinet

住宅物業的平面圖的備註:

1. 部分住宅單位的露台、陽台、工作平台、平台或外牆或設有外露之公用喉管，或外牆裝飾板內藏之公用喉管。
2. 部分住宅單位內之部分天花或有跌級樓板，用以安裝上層之機電設備或配合上層之結構、建築設計及/或裝修設計上的需要。
3. 部分住宅單位內或設有假陣或假天花用以安裝冷氣喉管及/或其他機電設備。

Remarks for the Floor Plans of Residential Properties:

1. Common pipes exposed or enclosed in cladding may be located at the balcony, verandah, utility platform, flat roof or external wall of some residential units.
2. There may be sunken slabs at some parts of the ceiling inside some residential units for the installation of mechanical and electrical services of the floor above or due to the structural, architectural and/or decoration design requirements of the floor above.
3. There may be ceiling bulkheads or false ceiling inside some residential units for the installation of air-conditioning conduits and/or other mechanical and electrical services.

11. 期數中的住宅物業的面積

AREA OF RESIDENTIAL PROPERTIES IN THE PHASE

物業的描述 Description of Residential Property			實用面積 (包括露台、工作平台及陽台 (如有)) 平方米 (平方呎) Saleable Area (including balcony, utility platform and verandah, if any) sq. metre (sq. ft.)	其他指明項目的面積 (不計入實用面積) 平方米 (平方呎) Area of other specified items (Not included in the Saleable Area) sq. metre (sq. ft.)									
大廈名稱 Block Name	樓層 Floor	單位 Unit		空調機房 Air-conditioning plant room	窗台 Bay window	閣樓 Cockloft	平台 Flat roof	花園 Garden	停車位 Parking space	天台 Roof	梯屋 Stairhood	前庭 Terrace	庭院 Yard
16	G/F & 1/F 複式單位 Duplex Units	A	289.125 (3,112) 露台 Balcony : 5.0 (54); 工作平台 Utility Platform : 1.5 (16)	-	-	-	-	99.558 (1,072)	25.000 (269)	-	-	-	-
		B	244.639 (2,633) 露台 Balcony : 5.0 (54); 工作平台 Utility Platform : 1.5 (16)	-	-	-	-	94.582 (1,018)	25.000 (269)	-	-	-	-
	3/F	A	94.615 (1,018) 露台 Balcony : 2.664 (29); 工作平台 Utility Platform : 1.5 (16)	-	3.697 (40)	-	-	-	-	-	-	-	-
		B	50.761 (546) 露台 Balcony : 2.0 (22); 工作平台 Utility Platform : 1.5 (16)	-	1.962 (21)	-	12.299 (132)	-	-	-	-	-	-
		C	47.540 (512) 露台 Balcony : 2.0 (22); 工作平台 Utility Platform : 1.5 (16)	-	2.013 (22)	-	16.808 (181)	-	-	-	-	-	-
		D	46.165 (497) 露台 Balcony : 2.0 (22); 工作平台 Utility Platform : 1.5 (16)	-	1.525 (16)	-	-	-	-	-	-	-	-
		E	46.165 (497) 露台 Balcony : 2.0 (22); 工作平台 Utility Platform : 1.5 (16)	-	1.525 (16)	-	-	-	-	-	-	-	-
		F	45.608 (491) 露台 Balcony : 2.0 (22); 工作平台 Utility Platform : 1.5 (16)	-	2.000 (22)	-	-	-	-	-	-	-	-
		G	75.311 (811) 露台 Balcony : 2.059 (22); 工作平台 Utility Platform : 1.5 (16)	-	2.838 (31)	-	-	-	-	-	-	-	-
		H	53.811 (579) 露台 Balcony : 2.0 (22); 工作平台 Utility Platform : 1.5 (16)	-	1.822 (20)	-	-	-	-	-	-	-	-
	5/F - 9/F, 12/F, 15/F - 17/F & 20/F - 23/F	A	94.615 (1,018) 露台 Balcony : 2.664 (29); 工作平台 Utility Platform : 1.5 (16)	-	3.697 (40)	-	-	-	-	-	-	-	-
		B	50.761 (546) 露台 Balcony : 2.0 (22); 工作平台 Utility Platform : 1.5 (16)	-	1.962 (21)	-	-	-	-	-	-	-	-
		C	47.540 (512) 露台 Balcony : 2.0 (22); 工作平台 Utility Platform : 1.5 (16)	-	2.013 (22)	-	-	-	-	-	-	-	-
		D	46.165 (497) 露台 Balcony : 2.0 (22); 工作平台 Utility Platform : 1.5 (16)	-	1.525 (16)	-	-	-	-	-	-	-	-
		E	46.165 (497) 露台 Balcony : 2.0 (22); 工作平台 Utility Platform : 1.5 (16)	-	1.525 (16)	-	-	-	-	-	-	-	-
		F	45.608 (491) 露台 Balcony : 2.0 (22); 工作平台 Utility Platform : 1.5 (16)	-	2.000 (22)	-	-	-	-	-	-	-	-
		G	75.311 (811) 露台 Balcony : 2.059 (22); 工作平台 Utility Platform : 1.5 (16)	-	2.838 (31)	-	-	-	-	-	-	-	-
		H	53.811 (579) 露台 Balcony : 2.0 (22); 工作平台 Utility Platform : 1.5 (16)	-	1.822 (20)	-	-	-	-	-	-	-	-

物業的描述 Description of Residential Property			實用面積 (包括露台、工作平台及陽台 (如有)) 平方米 (平方呎) Saleable Area (including balcony, utility platform and verandah, if any) sq. metre (sq. ft.)	其他指明項目的面積 (不計入實用面積) 平方米 (平方呎) Area of other specified items (Not included in the Saleable Area) sq. metre (sq. ft.)									
大廈名稱 Block Name	樓層 Floor	單位 Unit		空調機房 Air-conditioning plant room	窗台 Bay window	閣樓 Cockloft	平台 Flat roof	花園 Garden	停車位 Parking space	天台 Roof	梯屋 Stairhood	前庭 Terrace	庭院 Yard
16	10/F & 18/F	A	94.588 (1,018) 露台 Balcony : 2.664 (29); 工作平台 Utility Platform : 1.5 (16)	-	3.697 (40)	-	-	-	-	-	-	-	-
		B	51.154 (551) 露台 Balcony : 2.0 (22); 工作平台 Utility Platform : 1.5 (16) 陽台 Verandah : 3.679 (40)	-	-	-	-	-	-	-	-	-	-
		C	48.559 (523) 露台 Balcony : 2.0 (22); 工作平台 Utility Platform : 1.5 (16) 陽台 Verandah : 3.747 (40)	-	-	-	-	-	-	-	-	-	-
		D	46.104 (496) 露台 Balcony : 2.0 (22); 工作平台 Utility Platform : 1.5 (16)	-	1.525 (16)	-	-	-	-	-	-	-	-
		E	46.104 (496) 露台 Balcony : 2.0 (22); 工作平台 Utility Platform : 1.5 (16)	-	1.525 (16)	-	-	-	-	-	-	-	-
		F	46.687 (503) 露台 Balcony : 2.0 (22); 工作平台 Utility Platform : 1.5 (16) 陽台 Verandah : 2.624 (28)	-	-	-	-	-	-	-	-	-	-
		G	76.860 (827) 露台 Balcony : 2.0 (22); 工作平台 Utility Platform : 1.5 (16) 陽台 Verandah : 4.092 (44)	-	-	-	-	-	-	-	-	-	-
		H	53.868 (580) 露台 Balcony : 2.0 (22); 工作平台 Utility Platform : 1.5 (16)	-	1.822 (20)	-	-	-	-	-	-	-	-
	11/F & 19/F	A	94.706 (1,019) 露台 Balcony : 2.664 (29); 工作平台 Utility Platform : 1.5 (16)	-	3.697 (40)	-	-	-	-	-	-	-	-
		B	47.357 (510) 露台 Balcony : 2.0 (22); 工作平台 Utility Platform : 1.5 (16)	-	-	-	-	-	-	-	-	-	-
		C	44.694 (481) 露台 Balcony : 2.0 (22); 工作平台 Utility Platform : 1.5 (16)	-	-	-	-	-	-	-	-	-	-
		D	46.222 (498) 露台 Balcony : 2.0 (22); 工作平台 Utility Platform : 1.5 (16)	-	1.525 (16)	-	-	-	-	-	-	-	-
		E	46.222 (498) 露台 Balcony : 2.0 (22); 工作平台 Utility Platform : 1.5 (16)	-	1.525 (16)	-	-	-	-	-	-	-	-
		F	43.944 (473) 露台 Balcony : 2.0 (22); 工作平台 Utility Platform : 1.5 (16)	-	-	-	-	-	-	-	-	-	-
		G	72.768 (783) 露台 Balcony : 2.0 (22); 工作平台 Utility Platform : 1.5 (16)	-	-	-	-	-	-	-	-	-	-
		H	53.868 (580) 露台 Balcony : 2.0 (22); 工作平台 Utility Platform : 1.5 (16)	-	1.822 (20)	-	-	-	-	-	-	-	-

11. 期數中的住宅物業的面積

AREA OF RESIDENTIAL PROPERTIES IN THE PHASE

物業的描述 Description of Residential Property			實用面積 (包括露台、工作平台及陽台 (如有)) 平方米 (平方呎) Saleable Area (including balcony, utility platform and verandah, if any) sq. metre (sq. ft.)	其他指明項目的面積 (不計入實用面積) 平方米 (平方呎) Area of other specified items (Not included in the Saleable Area) sq. metre (sq. ft.)									
大廈名稱 Block Name	樓層 Floor	單位 Unit		空調機房 Air-conditioning plant room	窗台 Bay window	閣樓 Cockloft	平台 Flat roof	花園 Garden	停車位 Parking space	天台 Roof	梯屋 Stairhood	前庭 Terrace	庭院 Yard
16	25/F	A	131.376 (1,414) 露台 Balcony : - ; 工作平台 Utility Platform : 1.5 (16)	-	-	-	10.224 (110)	-	-	-	-	-	-
		B	51.154 (551) 露台 Balcony : 2.0 (22); 工作平台 Utility Platform : 1.5 (16) 陽台 Verandah : 3.679 (40)	-	-	-	-	-	-	-	-	-	-
		C	48.428 (521) 露台 Balcony : 2.0 (22); 工作平台 Utility Platform : 1.5 (16) 陽台 Verandah : 3.747 (40)	-	-	-	-	-	-	-	-	-	-
		D	46.234 (498) 露台 Balcony : 2.0 (22); 工作平台 Utility Platform : 1.5 (16)	-	1.525 (16)	-	-	-	-	-	-	-	-
		E	46.234 (498) 露台 Balcony : 2.0 (22); 工作平台 Utility Platform : 1.5 (16)	-	1.525 (16)	-	-	-	-	-	-	-	-
		F	46.556 (501) 露台 Balcony : 2.0 (22); 工作平台 Utility Platform : 1.5 (16) 陽台 Verandah : 2.624 (28)	-	-	-	-	-	-	-	-	-	-
		G	76.861 (827) 露台 Balcony : 2.0 (22); 工作平台 Utility Platform : 1.5 (16) 陽台 Verandah : 4.093 (44)	-	-	-	-	-	-	-	-	-	-
	26/F	A	129.260 (1,391) 露台 Balcony : 3.730 (40); 工作平台 Utility Platform : 1.5 (16)	-	-	-	-	-	-	-	-	-	-
		B	47.357 (510) 露台 Balcony : 2.0 (22); 工作平台 Utility Platform : 1.5 (16)	-	-	-	-	-	-	-	-	-	-
		C	44.580 (480) 露台 Balcony : 2.0 (22); 工作平台 Utility Platform : 1.5 (16)	-	-	-	-	-	-	-	-	-	-
		D	46.336 (499) 露台 Balcony : 2.0 (22); 工作平台 Utility Platform : 1.5 (16)	-	1.525 (16)	-	-	-	-	-	-	-	-
		E	46.336 (499) 露台 Balcony : 2.0 (22); 工作平台 Utility Platform : 1.5 (16)	-	1.525 (16)	-	-	-	-	-	-	-	-
		F	43.831 (472) 露台 Balcony : 2.0 (22); 工作平台 Utility Platform : 1.5 (16)	-	-	-	-	-	-	-	-	-	-
		G	72.768 (783) 露台 Balcony : 2.0 (22); 工作平台 Utility Platform : 1.5 (16)	-	-	-	-	-	-	-	-	-	-

物業的描述 Description of Residential Property			實用面積 (包括露台、工作平台及陽台 (如有)) 平方米 (平方呎) Saleable Area (including balcony, utility platform and verandah, if any) sq. metre (sq. ft.)	其他指明項目的面積 (不計入實用面積) 平方米 (平方呎) Area of other specified items (Not included in the Saleable Area) sq. metre (sq. ft.)									
大廈名稱 Block Name	樓層 Floor	單位 Unit		空調機房 Air-conditioning plant room	窗台 Bay window	閣樓 Cockloft	平台 Flat roof	花園 Garden	停車位 Parking space	天台 Roof	梯屋 Stairhood	前庭 Terrace	庭院 Yard
16	27/F - 28/F	A	128.170 (1,380) 露台 Balcony : 3.730 (40); 工作平台 Utility Platform : 1.5 (16)	-	2.800 (30)	-	-	-	-	-	-	-	-
		B	50.761 (546) 露台 Balcony : 2.0 (22); 工作平台 Utility Platform : 1.5 (16)	-	1.962 (21)	-	-	-	-	-	-	-	-
		C	47.418 (510) 露台 Balcony : 2.0 (22); 工作平台 Utility Platform : 1.5 (16)	-	2.013 (22)	-	-	-	-	-	-	-	-
		D	46.287 (498) 露台 Balcony : 2.0 (22); 工作平台 Utility Platform : 1.5 (16)	-	1.525 (16)	-	-	-	-	-	-	-	-
		E	46.287 (498) 露台 Balcony : 2.0 (22); 工作平台 Utility Platform : 1.5 (16)	-	1.525 (16)	-	-	-	-	-	-	-	-
		F	45.486 (490) 露台 Balcony : 2.0 (22); 工作平台 Utility Platform : 1.5 (16)	-	2.000 (22)	-	-	-	-	-	-	-	-
		G	75.311 (811) 露台 Balcony : 2.059 (22); 工作平台 Utility Platform : 1.5 (16)	-	2.838 (31)	-	-	-	-	-	-	-	-
	29/F	A	128.201 (1,380) 露台 Balcony : 3.730 (40); 工作平台 Utility Platform : 1.5 (16)	-	2.800 (30)	-	-	-	-	-	-	-	-
		B	48.909 (526) 露台 Balcony : 2.0 (22); 工作平台 Utility Platform : 1.5 (16) 陽台 Verandah : 1.434 (15)	-	-	-	1.830 (20)	-	-	-	-	-	-
		C	46.115 (496) 露台 Balcony : 2.0 (22); 工作平台 Utility Platform : 1.5 (16) 陽台 Verandah : 1.434 (15)	-	-	-	1.884 (20)	-	-	-	-	-	-
		D	46.234 (498) 露台 Balcony : 2.0 (22); 工作平台 Utility Platform : 1.5 (16)	-	1.525 (16)	-	-	-	-	-	-	-	-
		E	46.234 (498) 露台 Balcony : 2.0 (22); 工作平台 Utility Platform : 1.5 (16)	-	1.525 (16)	-	-	-	-	-	-	-	-
		F	44.708 (481) 露台 Balcony : 2.0 (22); 工作平台 Utility Platform : 1.5 (16) 陽台 Verandah : 0.776 (8)	-	-	-	1.505 (16)	-	-	-	-	-	-
		G	73.949 (796) 露台 Balcony : 2.0 (22); 工作平台 Utility Platform : 1.5 (16) 陽台 Verandah : 1.181 (13)	-	-	-	2.304 (25)	-	-	-	-	-	-

11. 期數中的住宅物業的面積

AREA OF RESIDENTIAL PROPERTIES IN THE PHASE

物業的描述 Description of Residential Property			實用面積 (包括露台、工作平台及陽台 (如有)) 平方米 (平方呎) Saleable Area (including balcony, utility platform and verandah, if any) sq. metre (sq. ft.)	其他指明項目的面積 (不計算入實用面積) 平方米 (平方呎) Area of other specified items (Not included in the Saleable Area) sq. metre (sq. ft.)									
大廈名稱 Block Name	樓層 Floor	單位 Unit		空調機房 Air-conditioning plant room	窗台 Bay window	閣樓 Cockloft	平台 Flat roof	花園 Garden	停車位 Parking space	天台 Roof	梯屋 Stairhood	前庭 Terrace	庭院 Yard
16	30/F	A	128,319 (1,381) 露台 Balcony : 3,730 (40); 工作平台 Utility Platform : 1.5 (16)	-	2,800 (30)	-	-	-	-	-	-	-	-
		B	47,357 (510) 露台 Balcony : 2.0 (22); 工作平台 Utility Platform : 1.5 (16)	-	-	-	-	-	-	-	-	-	-
		C	44,580 (480) 露台 Balcony : 2.0 (22); 工作平台 Utility Platform : 1.5 (16)	-	-	-	-	-	-	-	-	-	-
		D	46,336 (499) 露台 Balcony : 2.0 (22); 工作平台 Utility Platform : 1.5 (16)	-	1,525 (16)	-	-	-	-	-	-	-	-
		E	46,336 (499) 露台 Balcony : 2.0 (22); 工作平台 Utility Platform : 1.5 (16)	-	1,525 (16)	-	-	-	-	-	-	-	-
		F	43,831 (472) 露台 Balcony : 2.0 (22); 工作平台 Utility Platform : 1.5 (16)	-	-	-	-	-	-	-	-	-	-
		G	72,768 (783) 露台 Balcony : 2.0 (22); 工作平台 Utility Platform : 1.5 (16)	-	-	-	-	-	-	-	-	-	-
	31/F & 32/F 複式單位 Duplex Units	A	254,724 (2,742) 露台 Balcony : - ; 工作平台 Utility Platform : - 陽台 Verandah : 7,084 (76)	4,438 (48)	-	-	75,635 (814)	-	-	-	-	-	-
		B	267,569 (2,880) 露台 Balcony : - ; 工作平台 Utility Platform : - 陽台 Verandah : 7,894 (85)	5,362 (58)	-	-	93,360 (1,005)	-	-	-	-	-	-

物業的描述 Description of Residential Property			實用面積 (包括露台、工作平台及陽台 (如有)) 平方米 (平方呎) Saleable Area (including balcony, utility platform and verandah, if any) sq. metre (sq. ft.)	其他指明項目的面積 (不計算入實用面積) 平方米 (平方呎) Area of other specified items (Not included in the Saleable Area) sq. metre (sq. ft.)									
大廈名稱 Block Name	樓層 Floor	單位 Unit		空調機房 Air-conditioning plant room	窗台 Bay window	閣樓 Cockloft	平台 Flat roof	花園 Garden	停車位 Parking space	天台 Roof	梯屋 Stairhood	前庭 Terrace	庭院 Yard
17	G/F & 1/F 複式單位 Duplex Units	A	289,125 (3,112) 露台 Balcony : 5.0 (54); 工作平台 Utility Platform : 1.5 (16)	-	-	-	-	99,558 (1,072)	25,000 (269)	-	-	-	-
		B	244,639 (2,633) 露台 Balcony : 5.0 (54); 工作平台 Utility Platform : 1.5 (16)	-	-	-	-	94,582 (1,018)	25,000 (269)	-	-	-	-
	3/F	A	94,255 (1,015) 露台 Balcony : 2.664 (29); 工作平台 Utility Platform : 1.5 (16)	-	3,697 (40)	-	-	-	-	-	-	-	-
		B	75,311 (811) 露台 Balcony : 2.059 (22); 工作平台 Utility Platform : 1.5 (16)	-	2,838 (31)	-	-	-	-	-	-	-	-
		C	45,608 (491) 露台 Balcony : 2.0 (22); 工作平台 Utility Platform : 1.5 (16)	-	2,000 (22)	-	-	-	-	-	-	-	-
		D	46,165 (497) 露台 Balcony : 2.0 (22); 工作平台 Utility Platform : 1.5 (16)	-	1,525 (16)	-	-	-	-	-	-	-	-
		E	46,165 (497) 露台 Balcony : 2.0 (22); 工作平台 Utility Platform : 1.5 (16)	-	1,525 (16)	-	-	-	-	-	-	-	-
		F	47,540 (512) 露台 Balcony : 2.0 (22); 工作平台 Utility Platform : 1.5 (16)	-	2,013 (22)	-	16,808 (181)	-	-	-	-	-	-
		G	50,761 (546) 露台 Balcony : 2.0 (22); 工作平台 Utility Platform : 1.5 (16)	-	1,962 (21)	-	12,299 (132)	-	-	-	-	-	-
		H	54,171 (583) 露台 Balcony : 2.0 (22); 工作平台 Utility Platform : 1.5 (16)	-	1,822 (20)	-	-	-	-	-	-	-	-
	5/F - 9/F, 12/F, 15/F - 17/F & 20/F - 23/F	A	94,255 (1,015) 露台 Balcony : 2.664 (29); 工作平台 Utility Platform : 1.5 (16)	-	3,697 (40)	-	-	-	-	-	-	-	-
		B	75,311 (811) 露台 Balcony : 2.059 (22); 工作平台 Utility Platform : 1.5 (16)	-	2,838 (31)	-	-	-	-	-	-	-	-
		C	45,608 (491) 露台 Balcony : 2.0 (22); 工作平台 Utility Platform : 1.5 (16)	-	2,000 (22)	-	-	-	-	-	-	-	-
		D	46,165 (497) 露台 Balcony : 2.0 (22); 工作平台 Utility Platform : 1.5 (16)	-	1,525 (16)	-	-	-	-	-	-	-	-
		E	46,165 (497) 露台 Balcony : 2.0 (22); 工作平台 Utility Platform : 1.5 (16)	-	1,525 (16)	-	-	-	-	-	-	-	-
		F	47,540 (512) 露台 Balcony : 2.0 (22); 工作平台 Utility Platform : 1.5 (16)	-	2,013 (22)	-	-	-	-	-	-	-	-
		G	50,761 (546) 露台 Balcony : 2.0 (22); 工作平台 Utility Platform : 1.5 (16)	-	1,962 (21)	-	-	-	-	-	-	-	-
		H	54,171 (583) 露台 Balcony : 2.0 (22); 工作平台 Utility Platform : 1.5 (16)	-	1,822 (20)	-	-	-	-	-	-	-	-

11. 期數中的住宅物業的面積

AREA OF RESIDENTIAL PROPERTIES IN THE PHASE

物業的描述 Description of Residential Property			實用面積 (包括露台、工作平台及陽台 (如有)) 平方米 (平方呎) Saleable Area (including balcony, utility platform and verandah, if any) sq. metre (sq. ft.)	其他指明項目的面積 (不計入實用面積) 平方米 (平方呎) Area of other specified items (Not included in the Saleable Area) sq. metre (sq. ft.)									
大廈名稱 Block Name	樓層 Floor	單位 Unit		空調機房 Air-conditioning plant room	窗台 Bay window	閣樓 Cockloft	平台 Flat roof	花園 Garden	停車位 Parking space	天台 Roof	梯屋 Stairhood	前庭 Terrace	庭院 Yard
17	10/F & 18/F	A	94.311 (1,015) 露台 Balcony : 2.664 (29); 工作平台 Utility Platform : 1.5 (16)	-	3.697 (40)	-	-	-	-	-	-	-	-
		B	76.861 (827) 露台 Balcony : 2.0 (22); 工作平台 Utility Platform : 1.5 (16) 陽台 Verandah : 4.093 (44)	-	-	-	-	-	-	-	-	-	-
		C	46.687 (503) 露台 Balcony : 2.0 (22); 工作平台 Utility Platform : 1.5 (16) 陽台 Verandah : 2.624 (28)	-	-	-	-	-	-	-	-	-	-
		D	46.104 (496) 露台 Balcony : 2.0 (22); 工作平台 Utility Platform : 1.5 (16)	-	1.525 (16)	-	-	-	-	-	-	-	-
		E	46.104 (496) 露台 Balcony : 2.0 (22); 工作平台 Utility Platform : 1.5 (16)	-	1.525 (16)	-	-	-	-	-	-	-	-
		F	48.559 (523) 露台 Balcony : 2.0 (22); 工作平台 Utility Platform : 1.5 (16) 陽台 Verandah : 3.747 (40)	-	-	-	-	-	-	-	-	-	-
		G	51.154 (551) 露台 Balcony : 2.0 (22); 工作平台 Utility Platform : 1.5 (16) 陽台 Verandah : 3.679 (40)	-	-	-	-	-	-	-	-	-	-
		H	54.145 (583) 露台 Balcony : 2.0 (22); 工作平台 Utility Platform : 1.5 (16)	-	1.822 (20)	-	-	-	-	-	-	-	-
	11/F & 19/F	A	94.311 (1,015) 露台 Balcony : 2.664 (29); 工作平台 Utility Platform : 1.5 (16)	-	3.697 (40)	-	-	-	-	-	-	-	-
		B	72.768 (783) 露台 Balcony : 2.0 (22); 工作平台 Utility Platform : 1.5 (16)	-	-	-	-	-	-	-	-	-	-
		C	43.944 (473) 露台 Balcony : 2.0 (22); 工作平台 Utility Platform : 1.5 (16)	-	-	-	-	-	-	-	-	-	-
		D	46.222 (498) 露台 Balcony : 2.0 (22); 工作平台 Utility Platform : 1.5 (16)	-	1.525 (16)	-	-	-	-	-	-	-	-
		E	46.222 (498) 露台 Balcony : 2.0 (22); 工作平台 Utility Platform : 1.5 (16)	-	1.525 (16)	-	-	-	-	-	-	-	-
		F	44.694 (481) 露台 Balcony : 2.0 (22); 工作平台 Utility Platform : 1.5 (16)	-	-	-	-	-	-	-	-	-	-
		G	47.357 (510) 露台 Balcony : 2.0 (22); 工作平台 Utility Platform : 1.5 (16)	-	-	-	-	-	-	-	-	-	-
		H	54.263 (584) 露台 Balcony : 2.0 (22); 工作平台 Utility Platform : 1.5 (16)	-	1.822 (20)	-	-	-	-	-	-	-	-

物業的描述 Description of Residential Property			實用面積 (包括露台、工作平台及陽台 (如有)) 平方米 (平方呎) Saleable Area (including balcony, utility platform and verandah, if any) sq. metre (sq. ft.)	其他指明項目的面積 (不計入實用面積) 平方米 (平方呎) Area of other specified items (Not included in the Saleable Area) sq. metre (sq. ft.)									
大廈名稱 Block Name	樓層 Floor	單位 Unit		空調機房 Air-conditioning plant room	窗台 Bay window	閣樓 Cockloft	平台 Flat roof	花園 Garden	停車位 Parking space	天台 Roof	梯屋 Stairhood	前庭 Terrace	庭院 Yard
17	25/F	A	131.376 (1,414) 露台 Balcony : - ; 工作平台 Utility Platform : 1.5 (16)	-	-	-	10.224 (110)	-	-	-	-	-	-
		B	76.861 (827) 露台 Balcony : 2.0 (22); 工作平台 Utility Platform : 1.5 (16) 陽台 Verandah : 4.093 (44)	-	-	-	-	-	-	-	-	-	-
		C	46.556 (501) 露台 Balcony : 2.0 (22); 工作平台 Utility Platform : 1.5 (16) 陽台 Verandah : 2.624 (28)	-	-	-	-	-	-	-	-	-	-
		D	46.234 (498) 露台 Balcony : 2.0 (22); 工作平台 Utility Platform : 1.5 (16)	-	1.525 (16)	-	-	-	-	-	-	-	-
		E	46.234 (498) 露台 Balcony : 2.0 (22); 工作平台 Utility Platform : 1.5 (16)	-	1.525 (16)	-	-	-	-	-	-	-	-
		F	48.428 (521) 露台 Balcony : 2.0 (22); 工作平台 Utility Platform : 1.5 (16) 陽台 Verandah : 3.747 (40)	-	-	-	-	-	-	-	-	-	-
		G	51.154 (551) 露台 Balcony : 2.0 (22); 工作平台 Utility Platform : 1.5 (16) 陽台 Verandah : 3.679 (40)	-	-	-	-	-	-	-	-	-	-
		H	54.145 (583) 露台 Balcony : 2.0 (22); 工作平台 Utility Platform : 1.5 (16)	-	1.822 (20)	-	-	-	-	-	-	-	-
	26/F	A	129.260 (1,391) 露台 Balcony : 3.730 (40); 工作平台 Utility Platform : 1.5 (16)	-	-	-	-	-	-	-	-	-	-
		B	72.768 (783) 露台 Balcony : 2.0 (22); 工作平台 Utility Platform : 1.5 (16)	-	-	-	-	-	-	-	-	-	-
		C	43.831 (472) 露台 Balcony : 2.0 (22); 工作平台 Utility Platform : 1.5 (16)	-	-	-	-	-	-	-	-	-	-
		D	46.336 (499) 露台 Balcony : 2.0 (22); 工作平台 Utility Platform : 1.5 (16)	-	1.525 (16)	-	-	-	-	-	-	-	-
		E	46.336 (499) 露台 Balcony : 2.0 (22); 工作平台 Utility Platform : 1.5 (16)	-	1.525 (16)	-	-	-	-	-	-	-	-
		F	44.580 (480) 露台 Balcony : 2.0 (22); 工作平台 Utility Platform : 1.5 (16)	-	-	-	-	-	-	-	-	-	-
G	47.357 (510) 露台 Balcony : 2.0 (22); 工作平台 Utility Platform : 1.5 (16)	-	-	-	-	-	-	-	-	-	-		

11. 期數中的住宅物業的面積

AREA OF RESIDENTIAL PROPERTIES IN THE PHASE

物業的描述 Description of Residential Property			實用面積 (包括露台、工作平台及陽台 (如有)) 平方米 (平方呎) Saleable Area (including balcony, utility platform and verandah, if any) sq. metre (sq. ft.)	其他指明項目的面積 (不計入實用面積) 平方米 (平方呎) Area of other specified items (Not included in the Saleable Area) sq. metre (sq. ft.)									
大廈名稱 Block Name	樓層 Floor	單位 Unit		空調機房 Air-conditioning plant room	窗台 Bay window	閣樓 Cockloft	平台 Flat roof	花園 Garden	停車位 Parking space	天台 Roof	梯屋 Stairhood	前庭 Terrace	庭院 Yard
17	27/F - 30/F	A	128.170 (1,380) 露台 Balcony : 3.730 (40); 工作平台 Utility Platform : 1.5 (16)	-	2.800 (30)	-	-	-	-	-	-	-	-
		B	75.311 (811) 露台 Balcony : 2.059 (22); 工作平台 Utility Platform : 1.5 (16)	-	2.838 (31)	-	-	-	-	-	-	-	-
		C	45.486 (490) 露台 Balcony : 2.0 (22); 工作平台 Utility Platform : 1.5 (16)	-	2.000 (22)	-	-	-	-	-	-	-	-
		D	46.287 (498) 露台 Balcony : 2.0 (22); 工作平台 Utility Platform : 1.5 (16)	-	1.525 (16)	-	-	-	-	-	-	-	-
		E	46.287 (498) 露台 Balcony : 2.0 (22); 工作平台 Utility Platform : 1.5 (16)	-	1.525 (16)	-	-	-	-	-	-	-	-
		F	47.418 (510) 露台 Balcony : 2.0 (22); 工作平台 Utility Platform : 1.5 (16)	-	2.013 (22)	-	-	-	-	-	-	-	-
		G	50.761 (546) 露台 Balcony : 2.0 (22); 工作平台 Utility Platform : 1.5 (16)	-	1.962 (21)	-	-	-	-	-	-	-	-
	31/F	A	128.201 (1,380) 露台 Balcony : 3.730 (40); 工作平台 Utility Platform : 1.5 (16)	-	2.800 (30)	-	-	-	-	-	-	-	-
		B	73.949 (796) 露台 Balcony : 2.0 (22); 工作平台 Utility Platform : 1.5 (16) 陽台 Verandah : 1.181 (13)	-	-	-	2.304 (25)	-	-	-	-	-	-
		C	44.708 (481) 露台 Balcony : 2.0 (22); 工作平台 Utility Platform : 1.5 (16) 陽台 Verandah : 0.776 (8)	-	-	-	1.505 (16)	-	-	-	-	-	-
		D	46.234 (498) 露台 Balcony : 2.0 (22); 工作平台 Utility Platform : 1.5 (16)	-	1.525 (16)	-	-	-	-	-	-	-	-
		E	46.234 (498) 露台 Balcony : 2.0 (22); 工作平台 Utility Platform : 1.5 (16)	-	1.525 (16)	-	-	-	-	-	-	-	-
		F	46.115 (496) 露台 Balcony : 2.0 (22); 工作平台 Utility Platform : 1.5 (16) 陽台 Verandah : 1.434 (15)	-	-	-	1.885 (20)	-	-	-	-	-	-
		G	48.909 (526) 露台 Balcony : 2.0 (22); 工作平台 Utility Platform : 1.5 (16) 陽台 Verandah : 1.434 (15)	-	-	-	1.830 (20)	-	-	-	-	-	-

物業的描述 Description of Residential Property			實用面積 (包括露台、工作平台及陽台 (如有)) 平方米 (平方呎) Saleable Area (including balcony, utility platform and verandah, if any) sq. metre (sq. ft.)	其他指明項目的面積 (不計入實用面積) 平方米 (平方呎) Area of other specified items (Not included in the Saleable Area) sq. metre (sq. ft.)									
大廈名稱 Block Name	樓層 Floor	單位 Unit		空調機房 Air-conditioning plant room	窗台 Bay window	閣樓 Cockloft	平台 Flat roof	花園 Garden	停車位 Parking space	天台 Roof	梯屋 Stairhood	前庭 Terrace	庭院 Yard
17	32/F	A	128.319 (1,381) 露台 Balcony : 3.730 (40); 工作平台 Utility Platform : 1.5 (16)	-	2.800 (30)	-	-	-	-	-	-	-	-
		B	72.768 (783) 露台 Balcony : 2.0 (22); 工作平台 Utility Platform : 1.5 (16)	-	-	-	-	-	-	-	-	-	-
		C	43.831 (472) 露台 Balcony : 2.0 (22); 工作平台 Utility Platform : 1.5 (16)	-	-	-	-	-	-	-	-	-	-
		D	46.336 (499) 露台 Balcony : 2.0 (22); 工作平台 Utility Platform : 1.5 (16)	-	1.525 (16)	-	-	-	-	-	-	-	-
		E	46.336 (499) 露台 Balcony : 2.0 (22); 工作平台 Utility Platform : 1.5 (16)	-	1.525 (16)	-	-	-	-	-	-	-	-
		F	44.580 (480) 露台 Balcony : 2.0 (22); 工作平台 Utility Platform : 1.5 (16)	-	-	-	-	-	-	-	-	-	-
		G	47.357 (510) 露台 Balcony : 2.0 (22); 工作平台 Utility Platform : 1.5 (16)	-	-	-	-	-	-	-	-	-	-
	33/F & 35/F 複式單位 Duplex Units	A	254.724 (2,742) 露台 Balcony : -; 工作平台 Utility Platform : - 陽台 Verandah : 7.084 (76)	4.438 (48)	-	-	75.635 (814)	-	-	-	-	-	-
		B	267.569 (2,880) 露台 Balcony : -; 工作平台 Utility Platform : - 陽台 Verandah : 7.894 (85)	5.362 (58)	-	-	93.360 (1,005)	-	-	-	-	-	-

11. 期數中的住宅物業的面積

AREA OF RESIDENTIAL PROPERTIES IN THE PHASE

物業的描述 Description of Residential Property			實用面積 (包括露台、工作平台及陽台 (如有)) 平方米 (平方呎) Saleable Area (including balcony, utility platform and verandah, if any) sq. metre (sq. ft.)	其他指明項目的面積 (不計入實用面積) 平方米 (平方呎) Area of other specified items (Not included in the Saleable Area) sq. metre (sq. ft.)									
大廈名稱 Block Name	樓層 Floor	單位 Unit		空調機房 Air-conditioning plant room	窗台 Bay window	閣樓 Cockloft	平台 Flat roof	花園 Garden	停車位 Parking space	天台 Roof	梯屋 Stairhood	前庭 Terrace	庭院 Yard
22	G/F & 1/F 複式單位 Duplex Units	A	289.125 (3,112) 露台 Balcony : 5.0 (54); 工作平台 Utility Platform : 1.5 (16)	-	-	-	-	91.694 (987)	25.000 (269)	-	-	-	-
		B	244.639 (2,633) 露台 Balcony : 5.0 (54); 工作平台 Utility Platform : 1.5 (16)	-	-	-	-	94.582 (1,018)	25.000 (269)	-	-	-	-
	3/F	A	94.255 (1,015) 露台 Balcony : 2.664 (29); 工作平台 Utility Platform : 1.5 (16)	-	3.697 (40)	-	-	-	-	-	-	-	-
		B	75.311 (811) 露台 Balcony : 2.059 (22); 工作平台 Utility Platform : 1.5 (16)	-	2.838 (31)	-	-	-	-	-	-	-	-
		C	45.608 (491) 露台 Balcony : 2.0 (22); 工作平台 Utility Platform : 1.5 (16)	-	2.000 (22)	-	-	-	-	-	-	-	-
		D	46.165 (497) 露台 Balcony : 2.0 (22); 工作平台 Utility Platform : 1.5 (16)	-	1.525 (16)	-	-	-	-	-	-	-	-
		E	46.165 (497) 露台 Balcony : 2.0 (22); 工作平台 Utility Platform : 1.5 (16)	-	1.525 (16)	-	-	-	-	-	-	-	-
		F	47.540 (512) 露台 Balcony : 2.0 (22); 工作平台 Utility Platform : 1.5 (16)	-	2.013 (22)	-	4.082 (44)	-	-	-	-	-	-
		G	50.761 (546) 露台 Balcony : 2.0 (22); 工作平台 Utility Platform : 1.5 (16)	-	1.788 (19)	-	5.113 (55)	-	-	-	-	-	-
		H	54.171 (583) 露台 Balcony : 2.0 (22); 工作平台 Utility Platform : 1.5 (16)	-	1.822 (20)	-	-	-	-	-	-	-	-
	5/F - 11/F, 16/F - 20/F & 23/F	A	94.255 (1,015) 露台 Balcony : 2.664 (29); 工作平台 Utility Platform : 1.5 (16)	-	3.697 (40)	-	-	-	-	-	-	-	-
		B	75.311 (811) 露台 Balcony : 2.059 (22); 工作平台 Utility Platform : 1.5 (16)	-	2.838 (31)	-	-	-	-	-	-	-	-
		C	45.608 (491) 露台 Balcony : 2.0 (22); 工作平台 Utility Platform : 1.5 (16)	-	2.000 (22)	-	-	-	-	-	-	-	-
		D	46.165 (497) 露台 Balcony : 2.0 (22); 工作平台 Utility Platform : 1.5 (16)	-	1.525 (16)	-	-	-	-	-	-	-	-
		E	46.165 (497) 露台 Balcony : 2.0 (22); 工作平台 Utility Platform : 1.5 (16)	-	1.525 (16)	-	-	-	-	-	-	-	-
		F	47.540 (512) 露台 Balcony : 2.0 (22); 工作平台 Utility Platform : 1.5 (16)	-	2.013 (22)	-	-	-	-	-	-	-	-
		G	50.761 (546) 露台 Balcony : 2.0 (22); 工作平台 Utility Platform : 1.5 (16)	-	1.788 (19)	-	-	-	-	-	-	-	-
		H	54.171 (583) 露台 Balcony : 2.0 (22); 工作平台 Utility Platform : 1.5 (16)	-	1.822 (20)	-	-	-	-	-	-	-	-

物業的描述 Description of Residential Property			實用面積 (包括露台、工作平台及陽台 (如有)) 平方米 (平方呎) Saleable Area (including balcony, utility platform and verandah, if any) sq. metre (sq. ft.)	其他指明項目的面積 (不計入實用面積) 平方米 (平方呎) Area of other specified items (Not included in the Saleable Area) sq. metre (sq. ft.)									
大廈名稱 Block Name	樓層 Floor	單位 Unit		空調機房 Air-conditioning plant room	窗台 Bay window	閣樓 Cockloft	平台 Flat roof	花園 Garden	停車位 Parking space	天台 Roof	梯屋 Stairhood	前庭 Terrace	庭院 Yard
22	12/F & 21/F	A	94.311 (1,015) 露台 Balcony : 2.664 (29); 工作平台 Utility Platform : 1.5 (16)	-	3.697 (40)	-	-	-	-	-	-	-	-
		B	76.861 (827) 露台 Balcony : 2.0 (22); 工作平台 Utility Platform : 1.5 (16) 陽台 Verandah : 4.093 (44)	-	-	-	-	-	-	-	-	-	-
		C	46.687 (503) 露台 Balcony : 2.0 (22); 工作平台 Utility Platform : 1.5 (16) 陽台 Verandah : 2.624 (28)	-	-	-	-	-	-	-	-	-	-
		D	46.104 (496) 露台 Balcony : 2.0 (22); 工作平台 Utility Platform : 1.5 (16)	-	1.525 (16)	-	-	-	-	-	-	-	-
		E	46.104 (496) 露台 Balcony : 2.0 (22); 工作平台 Utility Platform : 1.5 (16)	-	1.525 (16)	-	-	-	-	-	-	-	-
		F	48.559 (523) 露台 Balcony : 2.0 (22); 工作平台 Utility Platform : 1.5 (16) 陽台 Verandah : 3.747 (40)	-	-	-	-	-	-	-	-	-	-
		G	50.926 (548) 露台 Balcony : 2.0 (22); 工作平台 Utility Platform : 1.5 (16) 陽台 Verandah : 3.451 (37)	-	-	-	-	-	-	-	-	-	-
		H	54.145 (583) 露台 Balcony : 2.0 (22); 工作平台 Utility Platform : 1.5 (16)	-	1.822 (20)	-	-	-	-	-	-	-	-
	15/F & 22/F	A	94.311 (1,015) 露台 Balcony : 2.664 (29); 工作平台 Utility Platform : 1.5 (16)	-	3.697 (40)	-	-	-	-	-	-	-	-
		B	72.768 (783) 露台 Balcony : 2.0 (22); 工作平台 Utility Platform : 1.5 (16)	-	-	-	-	-	-	-	-	-	-
		C	43.944 (473) 露台 Balcony : 2.0 (22); 工作平台 Utility Platform : 1.5 (16)	-	-	-	-	-	-	-	-	-	-
		D	46.222 (498) 露台 Balcony : 2.0 (22); 工作平台 Utility Platform : 1.5 (16)	-	1.525 (16)	-	-	-	-	-	-	-	-
		E	46.222 (498) 露台 Balcony : 2.0 (22); 工作平台 Utility Platform : 1.5 (16)	-	1.525 (16)	-	-	-	-	-	-	-	-
		F	44.694 (481) 露台 Balcony : 2.0 (22); 工作平台 Utility Platform : 1.5 (16)	-	-	-	-	-	-	-	-	-	-
		G	47.357 (510) 露台 Balcony : 2.0 (22); 工作平台 Utility Platform : 1.5 (16)	-	-	-	-	-	-	-	-	-	-
		H	54.263 (584) 露台 Balcony : 2.0 (22); 工作平台 Utility Platform : 1.5 (16)	-	1.822 (20)	-	-	-	-	-	-	-	-

11. 期數中的住宅物業的面積

AREA OF RESIDENTIAL PROPERTIES IN THE PHASE

物業的描述 Description of Residential Property			實用面積 (包括露台、工作平台及陽台 (如有)) 平方米 (平方呎) Saleable Area (including balcony, utility platform and verandah, if any) sq. metre (sq. ft.)	其他指明項目的面積 (不計入實用面積) 平方米 (平方呎) Area of other specified items (Not included in the Saleable Area) sq. metre (sq. ft.)									
大廈名稱 Block Name	樓層 Floor	單位 Unit		空調機房 Air-conditioning plant room	窗台 Bay window	閣樓 Cockloft	平台 Flat roof	花園 Garden	停車位 Parking space	天台 Roof	梯屋 Stairhood	前庭 Terrace	庭院 Yard
22	25/F	A	131.345 (1,414) 露台 Balcony : - ; 工作平台 Utility Platform : 1.5 (16)	-	-	-	10.224 (110)	-	-	-	-	-	-
		B	75.311 (811) 露台 Balcony : 2.059 (22); 工作平台 Utility Platform : 1.5 (16)	-	2.838 (31)	-	-	-	-	-	-	-	-
		C	45.486 (490) 露台 Balcony : 2.0 (22); 工作平台 Utility Platform : 1.5 (16)	-	2.000 (22)	-	-	-	-	-	-	-	-
		D	46.287 (498) 露台 Balcony : 2.0 (22); 工作平台 Utility Platform : 1.5 (16)	-	1.525 (16)	-	-	-	-	-	-	-	-
		E	46.287 (498) 露台 Balcony : 2.0 (22); 工作平台 Utility Platform : 1.5 (16)	-	1.525 (16)	-	-	-	-	-	-	-	-
		F	47.418 (510) 露台 Balcony : 2.0 (22); 工作平台 Utility Platform : 1.5 (16)	-	2.013 (22)	-	-	-	-	-	-	-	-
		G	50.761 (546) 露台 Balcony : 2.0 (22); 工作平台 Utility Platform : 1.5 (16)	-	1.788 (19)	-	-	-	-	-	-	-	-
	26/F	A	129.111 (1,390) 露台 Balcony : 3.730 (40); 工作平台 Utility Platform : 1.5 (16)	-	-	-	-	-	-	-	-	-	-
		B	75.311 (811) 露台 Balcony : 2.059 (22); 工作平台 Utility Platform : 1.5 (16)	-	2.838 (31)	-	-	-	-	-	-	-	-
		C	45.486 (490) 露台 Balcony : 2.0 (22); 工作平台 Utility Platform : 1.5 (16)	-	2.000 (22)	-	-	-	-	-	-	-	-
		D	46.287 (498) 露台 Balcony : 2.0 (22); 工作平台 Utility Platform : 1.5 (16)	-	1.525 (16)	-	-	-	-	-	-	-	-
		E	46.287 (498) 露台 Balcony : 2.0 (22); 工作平台 Utility Platform : 1.5 (16)	-	1.525 (16)	-	-	-	-	-	-	-	-
		F	47.418 (510) 露台 Balcony : 2.0 (22); 工作平台 Utility Platform : 1.5 (16)	-	2.013 (22)	-	-	-	-	-	-	-	-
		G	50.761 (546) 露台 Balcony : 2.0 (22); 工作平台 Utility Platform : 1.5 (16)	-	1.788 (19)	-	-	-	-	-	-	-	-

物業的描述 Description of Residential Property			實用面積 (包括露台、工作平台及陽台 (如有)) 平方米 (平方呎) Saleable Area (including balcony, utility platform and verandah, if any) sq. metre (sq. ft.)	其他指明項目的面積 (不計入實用面積) 平方米 (平方呎) Area of other specified items (Not included in the Saleable Area) sq. metre (sq. ft.)									
大廈名稱 Block Name	樓層 Floor	單位 Unit		空調機房 Air-conditioning plant room	窗台 Bay window	閣樓 Cockloft	平台 Flat roof	花園 Garden	停車位 Parking space	天台 Roof	梯屋 Stairhood	前庭 Terrace	庭院 Yard
22	27/F-28/F & 31/F-33/F	A	128.170 (1,380) 露台 Balcony : 3.730 (40); 工作平台 Utility Platform : 1.5 (16)	-	2.800 (30)	-	-	-	-	-	-	-	-
		B	75.311 (811) 露台 Balcony : 2.059 (22); 工作平台 Utility Platform : 1.5 (16)	-	2.838 (31)	-	-	-	-	-	-	-	-
		C	45.486 (490) 露台 Balcony : 2.0 (22); 工作平台 Utility Platform : 1.5 (16)	-	2.000 (22)	-	-	-	-	-	-	-	-
		D	46.287 (498) 露台 Balcony : 2.0 (22); 工作平台 Utility Platform : 1.5 (16)	-	1.525 (16)	-	-	-	-	-	-	-	-
		E	46.287 (498) 露台 Balcony : 2.0 (22); 工作平台 Utility Platform : 1.5 (16)	-	1.525 (16)	-	-	-	-	-	-	-	-
		F	47.418 (510) 露台 Balcony : 2.0 (22); 工作平台 Utility Platform : 1.5 (16)	-	2.013 (22)	-	-	-	-	-	-	-	-
		G	50.761 (546) 露台 Balcony : 2.0 (22); 工作平台 Utility Platform : 1.5 (16)	-	1.788 (19)	-	-	-	-	-	-	-	-
	29/F	A	128.201 (1,380) 露台 Balcony : 3.730 (40); 工作平台 Utility Platform : 1.5 (16)	-	2.800 (30)	-	-	-	-	-	-	-	-
		B	76.861 (827) 露台 Balcony : 2.0 (22); 工作平台 Utility Platform : 1.5 (16) 陽台 Verandah : 4.093 (44)	-	-	-	-	-	-	-	-	-	-
		C	46.556 (501) 露台 Balcony : 2.0 (22); 工作平台 Utility Platform : 1.5 (16) 陽台 Verandah : 2.624 (28)	-	-	-	-	-	-	-	-	-	-
		D	46.234 (498) 露台 Balcony : 2.0 (22); 工作平台 Utility Platform : 1.5 (16)	-	1.525 (16)	-	-	-	-	-	-	-	-
		E	46.234 (498) 露台 Balcony : 2.0 (22); 工作平台 Utility Platform : 1.5 (16)	-	1.525 (16)	-	-	-	-	-	-	-	-
		F	48.428 (521) 露台 Balcony : 2.0 (22); 工作平台 Utility Platform : 1.5 (16) 陽台 Verandah : 3.747 (40)	-	-	-	-	-	-	-	-	-	-
		G	50.926 (548) 露台 Balcony : 2.0 (22); 工作平台 Utility Platform : 1.5 (16) 陽台 Verandah : 3.451 (37)	-	-	-	-	-	-	-	-	-	-

11. 期數中的住宅物業的面積

AREA OF RESIDENTIAL PROPERTIES IN THE PHASE

物業的描述 Description of Residential Property			實用面積 (包括露台、工作平台及陽台 (如有)) 平方米 (平方呎) Saleable Area (including balcony, utility platform and verandah, if any) sq. metre (sq. ft.)	其他指明項目的面積 (不計算入實用面積) 平方米 (平方呎) Area of other specified items (Not included in the Saleable Area) sq. metre (sq. ft.)									
大廈名稱 Block Name	樓層 Floor	單位 Unit		空調機房 Air-conditioning plant room	窗台 Bay window	閣樓 Cockloft	平台 Flat roof	花園 Garden	停車位 Parking space	天台 Roof	梯屋 Stairhood	前庭 Terrace	庭院 Yard
22	30/F & 36/F	A	128.319 (1,381) 露台 Balcony : 3.730 (40); 工作平台 Utility Platform : 1.5 (16)	-	2.800 (30)	-	-	-	-	-	-	-	-
		B	72.768 (783) 露台 Balcony : 2.0 (22); 工作平台 Utility Platform : 1.5 (16)	-	-	-	-	-	-	-	-	-	-
		C	43.831 (472) 露台 Balcony : 2.0 (22); 工作平台 Utility Platform : 1.5 (16)	-	-	-	-	-	-	-	-	-	-
		D	46.336 (499) 露台 Balcony : 2.0 (22); 工作平台 Utility Platform : 1.5 (16)	-	1.525 (16)	-	-	-	-	-	-	-	-
		E	46.336 (499) 露台 Balcony : 2.0 (22); 工作平台 Utility Platform : 1.5 (16)	-	1.525 (16)	-	-	-	-	-	-	-	-
		F	44.580 (480) 露台 Balcony : 2.0 (22); 工作平台 Utility Platform : 1.5 (16)	-	-	-	-	-	-	-	-	-	-
		G	47.357 (510) 露台 Balcony : 2.0 (22); 工作平台 Utility Platform : 1.5 (16)	-	-	-	-	-	-	-	-	-	-
	35/F	A	128.201 (1,380) 露台 Balcony : 3.730 (40); 工作平台 Utility Platform : 1.5 (16)	-	2.800 (30)	-	-	-	-	-	-	-	-
		B	73.949 (796) 露台 Balcony : 2.0 (22); 工作平台 Utility Platform : 1.5 (16) 陽台 Verandah : 1.181 (13)	-	-	-	2.304 (25)	-	-	-	-	-	-
		C	44.708 (481) 露台 Balcony : 2.0 (22); 工作平台 Utility Platform : 1.5 (16) 陽台 Verandah : 0.776 (8)	-	-	-	1.505 (16)	-	-	-	-	-	-
		D	46.234 (498) 露台 Balcony : 2.0 (22); 工作平台 Utility Platform : 1.5 (16)	-	1.525 (16)	-	-	-	-	-	-	-	-
		E	46.234 (498) 露台 Balcony : 2.0 (22); 工作平台 Utility Platform : 1.5 (16)	-	1.525 (16)	-	-	-	-	-	-	-	-
		F	46.115 (496) 露台 Balcony : 2.0 (22); 工作平台 Utility Platform : 1.5 (16) 陽台 Verandah : 1.434 (15)	-	-	-	1.885 (20)	-	-	-	-	-	-
		G	48.909 (526) 露台 Balcony : 2.0 (22); 工作平台 Utility Platform : 1.5 (16) 陽台 Verandah : 1.434 (15)	-	-	-	1.644 (18)	-	-	-	-	-	-
	37/F & 38/F 複式單位 Duplex Units	A	254.724 (2,742) 露台 Balcony : -; 工作平台 Utility Platform : - 陽台 Verandah : 7.084 (76)	4.438 (48)	-	-	75.635 (814)	-	-	-	-	-	-
		B	267.569 (2,880) 露台 Balcony : -; 工作平台 Utility Platform : - 陽台 Verandah : 7.894 (85)	5.362 (58)	-	-	93.360 (1,005)	-	-	-	-	-	-

物業的描述 Description of Residential Property			實用面積 (包括露台、工作平台及陽台 (如有)) 平方米 (平方呎) Saleable Area (including balcony, utility platform and verandah, if any) sq. metre (sq. ft.)	其他指明項目的面積 (不計算入實用面積) 平方米 (平方呎) Area of other specified items (Not included in the Saleable Area) sq. metre (sq. ft.)									
大廈名稱 Block Name	樓層 Floor	單位 Unit		空調機房 Air-conditioning plant room	窗台 Bay window	閣樓 Cockloft	平台 Flat roof	花園 Garden	停車位 Parking space	天台 Roof	梯屋 Stairhood	前庭 Terrace	庭院 Yard
23	G/F & 1/F 複式單位 Duplex Units	A	259.570 (2,794) 露台 Balcony : 5.0 (54); 工作平台 Utility Platform : 1.5 (16)	-	-	-	-	90.768 (977)	12.500 (135)	-	-	-	-
		B	289.306 (3,114) 露台 Balcony : 5.0 (54); 工作平台 Utility Platform : 1.5 (16)	-	-	-	-	56.960 (613)	25.000 (269)	-	-	-	-
	3/F	A	94.386 (1,016) 露台 Balcony : 2.664 (29); 工作平台 Utility Platform : 1.5 (16)	-	3.698 (40)	-	-	-	-	-	-	-	-
		B	52.430 (564) 露台 Balcony : 2.0 (22); 工作平台 Utility Platform : 1.5 (16)	-	1.788 (19)	-	5.113 (55)	-	-	-	-	-	-
		C	47.540 (512) 露台 Balcony : 2.0 (22); 工作平台 Utility Platform : 1.5 (16)	-	2.013 (22)	-	4.082 (44)	-	-	-	-	-	-
		D	46.165 (497) 露台 Balcony : 2.0 (22); 工作平台 Utility Platform : 1.5 (16)	-	1.525 (16)	-	-	-	-	-	-	-	-
		E	46.165 (497) 露台 Balcony : 2.0 (22); 工作平台 Utility Platform : 1.5 (16)	-	1.525 (16)	-	-	-	-	-	-	-	-
		F	47.540 (512) 露台 Balcony : 2.0 (22); 工作平台 Utility Platform : 1.5 (16)	-	2.013 (22)	-	-	-	-	-	-	-	-
		G	52.430 (564) 露台 Balcony : 2.0 (22); 工作平台 Utility Platform : 1.5 (16)	-	1.963 (21)	-	-	-	-	-	-	-	-
		H	53.942 (581) 露台 Balcony : 2.0 (22); 工作平台 Utility Platform : 1.5 (16)	-	1.822 (20)	-	-	-	-	-	-	-	-
	5/F - 11/F, 16/F - 20/F & 23/F	A	94.386 (1,016) 露台 Balcony : 2.664 (29); 工作平台 Utility Platform : 1.5 (16)	-	3.698 (40)	-	-	-	-	-	-	-	-
		B	52.430 (564) 露台 Balcony : 2.0 (22); 工作平台 Utility Platform : 1.5 (16)	-	1.788 (19)	-	-	-	-	-	-	-	-
		C	47.540 (512) 露台 Balcony : 2.0 (22); 工作平台 Utility Platform : 1.5 (16)	-	2.013 (22)	-	-	-	-	-	-	-	-
		D	46.165 (497) 露台 Balcony : 2.0 (22); 工作平台 Utility Platform : 1.5 (16)	-	1.525 (16)	-	-	-	-	-	-	-	-
		E	46.165 (497) 露台 Balcony : 2.0 (22); 工作平台 Utility Platform : 1.5 (16)	-	1.525 (16)	-	-	-	-	-	-	-	-
		F	47.540 (512) 露台 Balcony : 2.0 (22); 工作平台 Utility Platform : 1.5 (16)	-	2.013 (22)	-	-	-	-	-	-	-	-
		G	52.430 (564) 露台 Balcony : 2.0 (22); 工作平台 Utility Platform : 1.5 (16)	-	1.963 (21)	-	-	-	-	-	-	-	-
		H	53.942 (581) 露台 Balcony : 2.0 (22); 工作平台 Utility Platform : 1.5 (16)	-	1.822 (20)	-	-	-	-	-	-	-	-

11. 期數中的住宅物業的面積

AREA OF RESIDENTIAL PROPERTIES IN THE PHASE

物業的描述 Description of Residential Property			實用面積 (包括露台、工作平台及陽台 (如有)) 平方米 (平方呎) Saleable Area (including balcony, utility platform and verandah, if any) sq. metre (sq. ft.)	其他指明項目的面積 (不計入實用面積) 平方米 (平方呎) Area of other specified items (Not included in the Saleable Area) sq. metre (sq. ft.)									
大廈名稱 Block Name	樓層 Floor	單位 Unit		空調機房 Air-conditioning plant room	窗台 Bay window	閣樓 Cockloft	平台 Flat roof	花園 Garden	停車位 Parking space	天台 Roof	梯屋 Stairhood	前庭 Terrace	庭院 Yard
23	12/F & 21/F	A	94.360 (1,016) 露台 Balcony : 2.664 (29); 工作平台 Utility Platform : 1.5 (16)	-	3.698 (40)	-	-	-	-	-	-	-	-
		B	52.595 (566) 露台 Balcony : 2.0 (22); 工作平台 Utility Platform : 1.5 (16) 陽台 Verandah : 3.451 (37)	-	-	-	-	-	-	-	-	-	-
		C	48.559 (523) 露台 Balcony : 2.0 (22); 工作平台 Utility Platform : 1.5 (16) 陽台 Verandah : 3.747 (40)	-	-	-	-	-	-	-	-	-	-
		D	46.104 (496) 露台 Balcony : 2.0 (22); 工作平台 Utility Platform : 1.5 (16)	-	1.525 (16)	-	-	-	-	-	-	-	-
		E	46.104 (496) 露台 Balcony : 2.0 (22); 工作平台 Utility Platform : 1.5 (16)	-	1.525 (16)	-	-	-	-	-	-	-	-
		F	48.559 (523) 露台 Balcony : 2.0 (22); 工作平台 Utility Platform : 1.5 (16) 陽台 Verandah : 3.747 (40)	-	-	-	-	-	-	-	-	-	-
		G	52.823 (569) 露台 Balcony : 2.0 (22); 工作平台 Utility Platform : 1.5 (16) 陽台 Verandah : 3.679 (40)	-	-	-	-	-	-	-	-	-	-
		H	53.916 (580) 露台 Balcony : 2.0 (22); 工作平台 Utility Platform : 1.5 (16)	-	1.822 (20)	-	-	-	-	-	-	-	-
	15/F & 22/F	A	94.478 (1,017) 露台 Balcony : 2.664 (29); 工作平台 Utility Platform : 1.5 (16)	-	3.698 (40)	-	-	-	-	-	-	-	-
		B	49.026 (528) 露台 Balcony : 2.0 (22); 工作平台 Utility Platform : 1.5 (16)	-	-	-	-	-	-	-	-	-	-
		C	44.694 (481) 露台 Balcony : 2.0 (22); 工作平台 Utility Platform : 1.5 (16)	-	-	-	-	-	-	-	-	-	-
		D	46.222 (498) 露台 Balcony : 2.0 (22); 工作平台 Utility Platform : 1.5 (16)	-	1.525 (16)	-	-	-	-	-	-	-	-
		E	46.222 (498) 露台 Balcony : 2.0 (22); 工作平台 Utility Platform : 1.5 (16)	-	1.525 (16)	-	-	-	-	-	-	-	-
		F	44.694 (481) 露台 Balcony : 2.0 (22); 工作平台 Utility Platform : 1.5 (16)	-	-	-	-	-	-	-	-	-	-
		G	49.026 (528) 露台 Balcony : 2.0 (22); 工作平台 Utility Platform : 1.5 (16)	-	-	-	-	-	-	-	-	-	-
		H	54.034 (582) 露台 Balcony : 2.0 (22); 工作平台 Utility Platform : 1.5 (16)	-	1.822 (20)	-	-	-	-	-	-	-	-

物業的描述 Description of Residential Property			實用面積 (包括露台、工作平台及陽台 (如有)) 平方米 (平方呎) Saleable Area (including balcony, utility platform and verandah, if any) sq. metre (sq. ft.)	其他指明項目的面積 (不計入實用面積) 平方米 (平方呎) Area of other specified items (Not included in the Saleable Area) sq. metre (sq. ft.)									
大廈名稱 Block Name	樓層 Floor	單位 Unit		空調機房 Air-conditioning plant room	窗台 Bay window	閣樓 Cockloft	平台 Flat roof	花園 Garden	停車位 Parking space	天台 Roof	梯屋 Stairhood	前庭 Terrace	庭院 Yard
23	25/F	A	131.248 (1,413) 露台 Balcony : - ; 工作平台 Utility Platform : 1.5 (16)	-	-	-	10.224 (110)	-	-	-	-	-	-
		B	52.430 (564) 露台 Balcony : 2.0 (22); 工作平台 Utility Platform : 1.5 (16)	-	1.788 (19)	-	-	-	-	-	-	-	-
		C	47.418 (510) 露台 Balcony : 2.0 (22); 工作平台 Utility Platform : 1.5 (16)	-	2.013 (22)	-	-	-	-	-	-	-	-
		D	46.287 (498) 露台 Balcony : 2.0 (22); 工作平台 Utility Platform : 1.5 (16)	-	1.525 (16)	-	-	-	-	-	-	-	-
		E	46.287 (498) 露台 Balcony : 2.0 (22); 工作平台 Utility Platform : 1.5 (16)	-	1.525 (16)	-	-	-	-	-	-	-	-
		F	47.418 (510) 露台 Balcony : 2.0 (22); 工作平台 Utility Platform : 1.5 (16)	-	2.013 (22)	-	-	-	-	-	-	-	-
		G	52.430 (564) 露台 Balcony : 2.0 (22); 工作平台 Utility Platform : 1.5 (16)	-	1.963 (21)	-	-	-	-	-	-	-	-
	26/F	A	129.014 (1,389) 露台 Balcony : 3.730 (40); 工作平台 Utility Platform : 1.5 (16)	-	-	-	-	-	-	-	-	-	-
		B	52.430 (564) 露台 Balcony : 2.0 (22); 工作平台 Utility Platform : 1.5 (16)	-	1.788 (19)	-	-	-	-	-	-	-	-
		C	47.418 (510) 露台 Balcony : 2.0 (22); 工作平台 Utility Platform : 1.5 (16)	-	2.013 (22)	-	-	-	-	-	-	-	-
		D	46.287 (498) 露台 Balcony : 2.0 (22); 工作平台 Utility Platform : 1.5 (16)	-	1.525 (16)	-	-	-	-	-	-	-	-
		E	46.287 (498) 露台 Balcony : 2.0 (22); 工作平台 Utility Platform : 1.5 (16)	-	1.525 (16)	-	-	-	-	-	-	-	-
		F	47.418 (510) 露台 Balcony : 2.0 (22); 工作平台 Utility Platform : 1.5 (16)	-	2.013 (22)	-	-	-	-	-	-	-	-
		G	52.430 (564) 露台 Balcony : 2.0 (22); 工作平台 Utility Platform : 1.5 (16)	-	1.963 (21)	-	-	-	-	-	-	-	-

11. 期數中的住宅物業的面積

AREA OF RESIDENTIAL PROPERTIES IN THE PHASE

物業的描述 Description of Residential Property			實用面積 (包括露台、工作平台及陽台 (如有)) 平方米 (平方呎) Saleable Area (including balcony, utility platform and verandah, if any) sq. metre (sq. ft.)	其他指明項目的面積 (不計入實用面積) 平方米 (平方呎) Area of other specified items (Not included in the Saleable Area) sq. metre (sq. ft.)											
大廈名稱 Block Name	樓層 Floor	單位 Unit		空調機房 Air-conditioning plant room	窗台 Bay window	閣樓 Cockloft	平台 Flat roof	花園 Garden	停車位 Parking space	天台 Roof	梯屋 Stairhood	前庭 Terrace	庭院 Yard		
23	27/F - 28/F, 31/F - 33/F & 35/F - 36/F	A	128.072 (1,379) 露台 Balcony : 3.730 (40); 工作平台 Utility Platform : 1.5 (16)	-	2.800 (30)	-	-	-	-	-	-	-	-		
		B	52.430 (564) 露台 Balcony : 2.0 (22); 工作平台 Utility Platform : 1.5 (16)	-	1.788 (19)	-	-	-	-	-	-	-	-	-	
		C	47.418 (510) 露台 Balcony : 2.0 (22); 工作平台 Utility Platform : 1.5 (16)	-	2.013 (22)	-	-	-	-	-	-	-	-	-	-
		D	46.287 (498) 露台 Balcony : 2.0 (22); 工作平台 Utility Platform : 1.5 (16)	-	1.525 (16)	-	-	-	-	-	-	-	-	-	-
		E	46.287 (498) 露台 Balcony : 2.0 (22); 工作平台 Utility Platform : 1.5 (16)	-	1.525 (16)	-	-	-	-	-	-	-	-	-	-
		F	47.418 (510) 露台 Balcony : 2.0 (22); 工作平台 Utility Platform : 1.5 (16)	-	2.013 (22)	-	-	-	-	-	-	-	-	-	-
		G	52.430 (564) 露台 Balcony : 2.0 (22); 工作平台 Utility Platform : 1.5 (16)	-	1.963 (21)	-	-	-	-	-	-	-	-	-	-
	29/F	A	128.020 (1,378) 露台 Balcony : 3.730 (40); 工作平台 Utility Platform : 1.5 (16)	-	2.800 (30)	-	-	-	-	-	-	-	-	-	
		B	52.595 (566) 露台 Balcony : 2.0 (22); 工作平台 Utility Platform : 1.5 (16) 陽台 Verandah : 3.451 (37)	-	-	-	-	-	-	-	-	-	-	-	
		C	48.428 (521) 露台 Balcony : 2.0 (22); 工作平台 Utility Platform : 1.5 (16) 陽台 Verandah : 3.747 (40)	-	-	-	-	-	-	-	-	-	-	-	
		D	46.234 (498) 露台 Balcony : 2.0 (22); 工作平台 Utility Platform : 1.5 (16)	-	1.525 (16)	-	-	-	-	-	-	-	-	-	
		E	46.234 (498) 露台 Balcony : 2.0 (22); 工作平台 Utility Platform : 1.5 (16)	-	1.525 (16)	-	-	-	-	-	-	-	-	-	
		F	48.428 (521) 露台 Balcony : 2.0 (22); 工作平台 Utility Platform : 1.5 (16) 陽台 Verandah : 3.747 (40)	-	-	-	-	-	-	-	-	-	-	-	
		G	52.823 (569) 露台 Balcony : 2.0 (22); 工作平台 Utility Platform : 1.5 (16) 陽台 Verandah : 3.679 (40)	-	-	-	-	-	-	-	-	-	-	-	

物業的描述 Description of Residential Property			實用面積 (包括露台、工作平台及陽台 (如有)) 平方米 (平方呎) Saleable Area (including balcony, utility platform and verandah, if any) sq. metre (sq. ft.)	其他指明項目的面積 (不計入實用面積) 平方米 (平方呎) Area of other specified items (Not included in the Saleable Area) sq. metre (sq. ft.)										
大廈名稱 Block Name	樓層 Floor	單位 Unit		空調機房 Air-conditioning plant room	窗台 Bay window	閣樓 Cockloft	平台 Flat roof	花園 Garden	停車位 Parking space	天台 Roof	梯屋 Stairhood	前庭 Terrace	庭院 Yard	
23	30/F & 38/F	A	128.256 (1,381) 露台 Balcony : 3.730 (40); 工作平台 Utility Platform : 1.5 (16)	-	2.800 (30)	-	-	-	-	-	-	-	-	
		B	49.026 (528) 露台 Balcony : 2.0 (22); 工作平台 Utility Platform : 1.5 (16)	-	-	-	-	-	-	-	-	-	-	-
		C	44.580 (480) 露台 Balcony : 2.0 (22); 工作平台 Utility Platform : 1.5 (16)	-	-	-	-	-	-	-	-	-	-	-
		D	46.336 (499) 露台 Balcony : 2.0 (22); 工作平台 Utility Platform : 1.5 (16)	-	1.525 (16)	-	-	-	-	-	-	-	-	-
		E	46.336 (499) 露台 Balcony : 2.0 (22); 工作平台 Utility Platform : 1.5 (16)	-	1.525 (16)	-	-	-	-	-	-	-	-	-
		F	44.580 (480) 露台 Balcony : 2.0 (22); 工作平台 Utility Platform : 1.5 (16)	-	-	-	-	-	-	-	-	-	-	-
		G	49.026 (528) 露台 Balcony : 2.0 (22); 工作平台 Utility Platform : 1.5 (16)	-	-	-	-	-	-	-	-	-	-	-
	37/F	A	128.020 (1,378) 露台 Balcony : 3.730 (40); 工作平台 Utility Platform : 1.5 (16)	-	2.800 (30)	-	-	-	-	-	-	-	-	-
		B	50.578 (544) 露台 Balcony : 2.0 (22); 工作平台 Utility Platform : 1.5 (16) 陽台 Verandah : 1.434 (15)	-	-	-	1.643 (18)	-	-	-	-	-	-	-
		C	46.115 (496) 露台 Balcony : 2.0 (22); 工作平台 Utility Platform : 1.5 (16) 陽台 Verandah : 1.434 (15)	-	-	-	1.884 (20)	-	-	-	-	-	-	-
		D	46.234 (498) 露台 Balcony : 2.0 (22); 工作平台 Utility Platform : 1.5 (16)	-	1.525 (16)	-	-	-	-	-	-	-	-	-
		E	46.234 (498) 露台 Balcony : 2.0 (22); 工作平台 Utility Platform : 1.5 (16)	-	1.525 (16)	-	-	-	-	-	-	-	-	-
		F	46.115 (496) 露台 Balcony : 2.0 (22); 工作平台 Utility Platform : 1.5 (16) 陽台 Verandah : 1.434 (15)	-	-	-	1.884 (20)	-	-	-	-	-	-	-
		G	50.578 (544) 露台 Balcony : 2.0 (22); 工作平台 Utility Platform : 1.5 (16) 陽台 Verandah : 1.434 (15)	-	-	-	1.830 (20)	-	-	-	-	-	-	-
39/F & 40/F 複式單位 Duplex Units	A	266.895 (2,873) 露台 Balcony : -; 工作平台 Utility Platform : - 陽台 Verandah : 7.084 (76)	5.362 (58)	-	-	75.878 (817)	-	-	-	-	-	-	-	
	B	254.742 (2,742) 露台 Balcony : -; 工作平台 Utility Platform : - 陽台 Verandah : 7.084 (76)	4.438 (48)	-	-	75.878 (817)	-	-	-	-	-	-	-	

11. 期數中的住宅物業的面積

AREA OF RESIDENTIAL PROPERTIES IN THE PHASE

物業的描述 Description of Residential Property			實用面積 (包括露台、工作平台及陽台 (如有)) 平方米 (平方呎) Saleable Area (including balcony, utility platform and verandah, if any) sq. metre (sq. ft.)	其他指明項目的面積 (不計算入實用面積) 平方米 (平方呎) Area of other specified items (Not included in the Saleable Area) sq. metre (sq. ft.)									
大廈名稱 Block Name	樓層 Floor	單位 Unit		空調機房 Air-conditioning plant room	窗台 Bay window	閣樓 Cockloft	平台 Flat roof	花園 Garden	停車位 Parking space	天台 Roof	梯屋 Stairhood	前庭 Terrace	庭院 Yard
25	G/F & 1/F 複式單位 Duplex Units	A	315.942 (3,401) 露台 Balcony : 5.0 (54); 工作平台 Utility Platform : —	-	-	-	-	67.204 (723)	12.500 (135)	-	-	-	-
		A	71.250 (767) 露台 Balcony : 2.0 (22); 工作平台 Utility Platform : 1.5 (16)	-	-	-	-	-	-	-	-	-	-
	3/F	B	52.475 (565) 露台 Balcony : 2.0 (22); 工作平台 Utility Platform : 1.5 (16)	-	1.987 (21)	-	4.848 (52)	-	-	-	-	-	-
		C	47.540 (512) 露台 Balcony : 2.0 (22); 工作平台 Utility Platform : 1.5 (16)	-	2.013 (22)	-	4.568 (49)	-	-	-	-	-	-
		D	46.165 (497) 露台 Balcony : 2.0 (22); 工作平台 Utility Platform : 1.5 (16)	-	1.525 (16)	-	-	-	-	-	-	-	-
		E	46.165 (497) 露台 Balcony : 2.0 (22); 工作平台 Utility Platform : 1.5 (16)	-	1.525 (16)	-	-	-	-	-	-	-	-
		F	47.540 (512) 露台 Balcony : 2.0 (22); 工作平台 Utility Platform : 1.5 (16)	-	2.013 (22)	-	5.671 (61)	-	-	-	-	-	-
		G	52.430 (564) 露台 Balcony : 2.0 (22); 工作平台 Utility Platform : 1.5 (16)	-	1.963 (21)	-	6.865 (74)	-	-	-	-	-	-
		H	71.250 (767) 露台 Balcony : 2.0 (22); 工作平台 Utility Platform : 1.5 (16)	-	-	-	-	-	-	-	-	-	-
		5/F - 11/F & 16/F - 19/F	A	71.250 (767) 露台 Balcony : 2.0 (22); 工作平台 Utility Platform : 1.5 (16)	-	-	-	-	-	-	-	-	-
	B		52.475 (565) 露台 Balcony : 2.0 (22); 工作平台 Utility Platform : 1.5 (16)	-	1.987 (21)	-	-	-	-	-	-	-	-
	C		47.540 (512) 露台 Balcony : 2.0 (22); 工作平台 Utility Platform : 1.5 (16)	-	2.013 (22)	-	-	-	-	-	-	-	-
	D		46.165 (497) 露台 Balcony : 2.0 (22); 工作平台 Utility Platform : 1.5 (16)	-	1.525 (16)	-	-	-	-	-	-	-	-
	E		46.165 (497) 露台 Balcony : 2.0 (22); 工作平台 Utility Platform : 1.5 (16)	-	1.525 (16)	-	-	-	-	-	-	-	-
	F		47.540 (512) 露台 Balcony : 2.0 (22); 工作平台 Utility Platform : 1.5 (16)	-	2.013 (22)	-	-	-	-	-	-	-	-
	G		52.430 (564) 露台 Balcony : 2.0 (22); 工作平台 Utility Platform : 1.5 (16)	-	1.963 (21)	-	-	-	-	-	-	-	-
	H		71.250 (767) 露台 Balcony : 2.0 (22); 工作平台 Utility Platform : 1.5 (16)	-	-	-	-	-	-	-	-	-	-

物業的描述 Description of Residential Property			實用面積 (包括露台、工作平台及陽台 (如有)) 平方米 (平方呎) Saleable Area (including balcony, utility platform and verandah, if any) sq. metre (sq. ft.)	其他指明項目的面積 (不計算入實用面積) 平方米 (平方呎) Area of other specified items (Not included in the Saleable Area) sq. metre (sq. ft.)									
大廈名稱 Block Name	樓層 Floor	單位 Unit		空調機房 Air-conditioning plant room	窗台 Bay window	閣樓 Cockloft	平台 Flat roof	花園 Garden	停車位 Parking space	天台 Roof	梯屋 Stairhood	前庭 Terrace	庭院 Yard
25	12/F	A	71.224 (767) 露台 Balcony : 2.0 (22); 工作平台 Utility Platform : 1.5 (16)	-	-	-	-	-	-	-	-	-	-
		B	52.966 (570) 露台 Balcony : 2.0 (22); 工作平台 Utility Platform : 1.5 (16) 陽台 Verandah : 3.721 (40)	-	-	-	-	-	-	-	-	-	-
		C	48.559 (523) 露台 Balcony : 2.0 (22); 工作平台 Utility Platform : 1.5 (16) 陽台 Verandah : 3.747 (40)	-	-	-	-	-	-	-	-	-	-
		D	46.104 (496) 露台 Balcony : 2.0 (22); 工作平台 Utility Platform : 1.5 (16)	-	1.525 (16)	-	-	-	-	-	-	-	-
		E	46.104 (496) 露台 Balcony : 2.0 (22); 工作平台 Utility Platform : 1.5 (16)	-	1.525 (16)	-	-	-	-	-	-	-	-
		F	48.559 (523) 露台 Balcony : 2.0 (22); 工作平台 Utility Platform : 1.5 (16) 陽台 Verandah : 3.747 (40)	-	-	-	-	-	-	-	-	-	-
		G	52.823 (569) 露台 Balcony : 2.0 (22); 工作平台 Utility Platform : 1.5 (16) 陽台 Verandah : 3.679 (40)	-	-	-	-	-	-	-	-	-	-
		H	71.224 (767) 露台 Balcony : 2.0 (22); 工作平台 Utility Platform : 1.5 (16)	-	-	-	-	-	-	-	-	-	-
	15/F	A	71.342 (768) 露台 Balcony : 2.0 (22); 工作平台 Utility Platform : 1.5 (16)	-	-	-	-	-	-	-	-	-	-
		B	49.127 (529) 露台 Balcony : 2.0 (22); 工作平台 Utility Platform : 1.5 (16)	-	-	-	-	-	-	-	-	-	-
		C	44.694 (481) 露台 Balcony : 2.0 (22); 工作平台 Utility Platform : 1.5 (16)	-	-	-	-	-	-	-	-	-	-
		D	46.222 (498) 露台 Balcony : 2.0 (22); 工作平台 Utility Platform : 1.5 (16)	-	1.525 (16)	-	-	-	-	-	-	-	-
		E	46.222 (498) 露台 Balcony : 2.0 (22); 工作平台 Utility Platform : 1.5 (16)	-	1.525 (16)	-	-	-	-	-	-	-	-
		F	44.694 (481) 露台 Balcony : 2.0 (22); 工作平台 Utility Platform : 1.5 (16)	-	-	-	-	-	-	-	-	-	-
		G	49.026 (528) 露台 Balcony : 2.0 (22); 工作平台 Utility Platform : 1.5 (16)	-	-	-	-	-	-	-	-	-	-
		H	71.342 (768) 露台 Balcony : 2.0 (22); 工作平台 Utility Platform : 1.5 (16)	-	-	-	-	-	-	-	-	-	-

11. 期數中的住宅物業的面積

AREA OF RESIDENTIAL PROPERTIES IN THE PHASE

物業的描述 Description of Residential Property			實用面積 (包括露台、工作平台及陽台 (如有)) 平方米 (平方呎) Saleable Area (including balcony, utility platform and verandah, if any) sq. metre (sq. ft.)	其他指明項目的面積 (不計算入實用面積) 平方米 (平方呎) Area of other specified items (Not included in the Saleable Area) sq. metre (sq. ft.)										
大廈名稱 Block Name	樓層 Floor	單位 Unit		空調機房 Air-conditioning plant room	窗台 Bay window	閣樓 Cockloft	平台 Flat roof	花園 Garden	停車位 Parking space	天台 Roof	梯屋 Stairhood	前庭 Terrace	庭院 Yard	
25	20/F	A	129.477 (1,394) 露台 Balcony : - ; 工作平台 Utility Platform : 1.5 (16)	-	-	-	7.345 (79)	-	-	-	-	-	-	
		B	52.475 (565) 露台 Balcony : 2.0 (22); 工作平台 Utility Platform : 1.5 (16)	-	1.987 (21)	-	-	-	-	-	-	-	-	
		C	47.418 (510) 露台 Balcony : 2.0 (22); 工作平台 Utility Platform : 1.5 (16)	-	2.013 (22)	-	-	-	-	-	-	-	-	-
		D	46.287 (498) 露台 Balcony : 2.0 (22); 工作平台 Utility Platform : 1.5 (16)	-	1.525 (16)	-	-	-	-	-	-	-	-	-
		E	46.287 (498) 露台 Balcony : 2.0 (22); 工作平台 Utility Platform : 1.5 (16)	-	1.525 (16)	-	-	-	-	-	-	-	-	-
		F	47.418 (510) 露台 Balcony : 2.0 (22); 工作平台 Utility Platform : 1.5 (16)	-	2.013 (22)	-	-	-	-	-	-	-	-	-
		G	52.430 (564) 露台 Balcony : 2.0 (22); 工作平台 Utility Platform : 1.5 (16)	-	1.963 (21)	-	-	-	-	-	-	-	-	-
	21/F	A	130.041 (1,400) 露台 Balcony : 3.755 (40); 工作平台 Utility Platform : 1.5 (16)	-	-	-	-	-	-	-	-	-	-	-
		B	52.966 (570) 露台 Balcony : 2.0 (22); 工作平台 Utility Platform : 1.5 (16) 陽台 Verandah : 3.721 (40)	-	-	-	-	-	-	-	-	-	-	-
		C	48.428 (521) 露台 Balcony : 2.0 (22); 工作平台 Utility Platform : 1.5 (16) 陽台 Verandah : 3.747 (40)	-	-	-	-	-	-	-	-	-	-	-
		D	46.234 (498) 露台 Balcony : 2.0 (22); 工作平台 Utility Platform : 1.5 (16)	-	1.525 (16)	-	-	-	-	-	-	-	-	-
		E	46.234 (498) 露台 Balcony : 2.0 (22); 工作平台 Utility Platform : 1.5 (16)	-	1.525 (16)	-	-	-	-	-	-	-	-	-
		F	48.428 (521) 露台 Balcony : 2.0 (22); 工作平台 Utility Platform : 1.5 (16) 陽台 Verandah : 3.747 (40)	-	-	-	-	-	-	-	-	-	-	-
		G	52.824 (569) 露台 Balcony : 2.0 (22); 工作平台 Utility Platform : 1.5 (16) 陽台 Verandah : 3.680 (40)	-	-	-	-	-	-	-	-	-	-	-

物業的描述 Description of Residential Property			實用面積 (包括露台、工作平台及陽台 (如有)) 平方米 (平方呎) Saleable Area (including balcony, utility platform and verandah, if any) sq. metre (sq. ft.)	其他指明項目的面積 (不計算入實用面積) 平方米 (平方呎) Area of other specified items (Not included in the Saleable Area) sq. metre (sq. ft.)										
大廈名稱 Block Name	樓層 Floor	單位 Unit		空調機房 Air-conditioning plant room	窗台 Bay window	閣樓 Cockloft	平台 Flat roof	花園 Garden	停車位 Parking space	天台 Roof	梯屋 Stairhood	前庭 Terrace	庭院 Yard	
25	22/F, 30/F & 38/F	A	129.336 (1,392) 露台 Balcony : 3.755 (40); 工作平台 Utility Platform : 1.5 (16)	-	2.800 (30)	-	-	-	-	-	-	-	-	
		B	49.127 (529) 露台 Balcony : 2.0 (22); 工作平台 Utility Platform : 1.5 (16)	-	-	-	-	-	-	-	-	-	-	
		C	44.580 (480) 露台 Balcony : 2.0 (22); 工作平台 Utility Platform : 1.5 (16)	-	-	-	-	-	-	-	-	-	-	-
		D	46.336 (499) 露台 Balcony : 2.0 (22); 工作平台 Utility Platform : 1.5 (16)	-	1.525 (16)	-	-	-	-	-	-	-	-	-
		E	46.336 (499) 露台 Balcony : 2.0 (22); 工作平台 Utility Platform : 1.5 (16)	-	1.525 (16)	-	-	-	-	-	-	-	-	-
		F	44.580 (480) 露台 Balcony : 2.0 (22); 工作平台 Utility Platform : 1.5 (16)	-	-	-	-	-	-	-	-	-	-	-
		G	49.026 (528) 露台 Balcony : 2.0 (22); 工作平台 Utility Platform : 1.5 (16)	-	-	-	-	-	-	-	-	-	-	-
	23/F, 25/F & 26/F	A	129.152 (1,390) 露台 Balcony : 3.755 (40); 工作平台 Utility Platform : 1.5 (16)	-	2.800 (30)	-	-	-	-	-	-	-	-	-
		B	52.475 (565) 露台 Balcony : 2.0 (22); 工作平台 Utility Platform : 1.5 (16)	-	1.987 (21)	-	-	-	-	-	-	-	-	-
		C	47.418 (510) 露台 Balcony : 2.0 (22); 工作平台 Utility Platform : 1.5 (16)	-	2.013 (22)	-	-	-	-	-	-	-	-	-
		D	46.287 (498) 露台 Balcony : 2.0 (22); 工作平台 Utility Platform : 1.5 (16)	-	1.525 (16)	-	-	-	-	-	-	-	-	-
		E	46.287 (498) 露台 Balcony : 2.0 (22); 工作平台 Utility Platform : 1.5 (16)	-	1.525 (16)	-	-	-	-	-	-	-	-	-
		F	47.418 (510) 露台 Balcony : 2.0 (22); 工作平台 Utility Platform : 1.5 (16)	-	2.013 (22)	-	-	-	-	-	-	-	-	-
		G	52.430 (564) 露台 Balcony : 2.0 (22); 工作平台 Utility Platform : 1.5 (16)	-	1.963 (21)	-	-	-	-	-	-	-	-	-

11. 期數中的住宅物業的面積

AREA OF RESIDENTIAL PROPERTIES IN THE PHASE

物業的描述 Description of Residential Property			實用面積 (包括露台、工作平台及陽台(如有)) 平方米(平方呎) Saleable Area (including balcony, utility platform and verandah, if any) sq. metre (sq. ft.)	其他指明項目的面積(不計算入實用面積)平方米(平方呎) Area of other specified items (Not included in the Saleable Area) sq. metre (sq. ft.)									
大廈名稱 Block Name	樓層 Floor	單位 Unit		空調機房 Air-conditioning plant room	窗台 Bay window	閣樓 Cockloft	平台 Flat roof	花園 Garden	停車位 Parking space	天台 Roof	梯屋 Stairhood	前庭 Terrace	庭院 Yard
25	27/F - 28/F, 31/F - 33/F & 35/F - 36/F	A	129.152 (1,390) 露台 Balcony : 3.755 (40); 工作平台 Utility Platform : 1.5 (16)	-	2.800 (30)	-	-	-	-	-	-	-	-
		B	52.475 (565) 露台 Balcony : 2.0 (22); 工作平台 Utility Platform : 1.5 (16)	-	1.987 (21)	-	-	-	-	-	-	-	-
		C	47.418 (510) 露台 Balcony : 2.0 (22); 工作平台 Utility Platform : 1.5 (16)	-	2.013 (22)	-	-	-	-	-	-	-	-
		D	46.287 (498) 露台 Balcony : 2.0 (22); 工作平台 Utility Platform : 1.5 (16)	-	1.525 (16)	-	-	-	-	-	-	-	-
		E	46.287 (498) 露台 Balcony : 2.0 (22); 工作平台 Utility Platform : 1.5 (16)	-	1.525 (16)	-	-	-	-	-	-	-	-
		F	47.418 (510) 露台 Balcony : 2.0 (22); 工作平台 Utility Platform : 1.5 (16)	-	2.013 (22)	-	-	-	-	-	-	-	-
		G	52.430 (564) 露台 Balcony : 2.0 (22); 工作平台 Utility Platform : 1.5 (16)	-	1.963 (21)	-	-	-	-	-	-	-	-
	29/F	A	129.100 (1,390) 露台 Balcony : 3.755 (40); 工作平台 Utility Platform : 1.5 (16)	-	2.800 (30)	-	-	-	-	-	-	-	-
		B	52.966 (570) 露台 Balcony : 2.0 (22); 工作平台 Utility Platform : 1.5 (16) 陽台 Verandah : 3.721 (40)	-	-	-	-	-	-	-	-	-	-
		C	48.428 (521) 露台 Balcony : 2.0 (22); 工作平台 Utility Platform : 1.5 (16) 陽台 Verandah : 3.747 (40)	-	-	-	-	-	-	-	-	-	-
		D	46.234 (498) 露台 Balcony : 2.0 (22); 工作平台 Utility Platform : 1.5 (16)	-	1.525 (16)	-	-	-	-	-	-	-	-
		E	46.234 (498) 露台 Balcony : 2.0 (22); 工作平台 Utility Platform : 1.5 (16)	-	1.525 (16)	-	-	-	-	-	-	-	-
		F	48.428 (521) 露台 Balcony : 2.0 (22); 工作平台 Utility Platform : 1.5 (16) 陽台 Verandah : 3.747 (40)	-	-	-	-	-	-	-	-	-	-
		G	52.824 (569) 露台 Balcony : 2.0 (22); 工作平台 Utility Platform : 1.5 (16) 陽台 Verandah : 3.680 (40)	-	-	-	-	-	-	-	-	-	-

物業的描述 Description of Residential Property			實用面積 (包括露台、工作平台及陽台(如有)) 平方米(平方呎) Saleable Area (including balcony, utility platform and verandah, if any) sq. metre (sq. ft.)	其他指明項目的面積(不計算入實用面積)平方米(平方呎) Area of other specified items (Not included in the Saleable Area) sq. metre (sq. ft.)									
大廈名稱 Block Name	樓層 Floor	單位 Unit		空調機房 Air-conditioning plant room	窗台 Bay window	閣樓 Cockloft	平台 Flat roof	花園 Garden	停車位 Parking space	天台 Roof	梯屋 Stairhood	前庭 Terrace	庭院 Yard
25	37/F	A	129.100 (1,390) 露台 Balcony : 3.755 (40); 工作平台 Utility Platform : 1.5 (16)	-	2.800 (30)	-	-	-	-	-	-	-	-
		B	50.679 (546) 露台 Balcony : 2.0 (22); 工作平台 Utility Platform : 1.5 (16) 陽台 Verandah : 1.434 (15)	-	-	-	1.863 (20)	-	-	-	-	-	-
		C	46.115 (496) 露台 Balcony : 2.0 (22); 工作平台 Utility Platform : 1.5 (16) 陽台 Verandah : 1.434 (15)	-	-	-	1.884 (20)	-	-	-	-	-	-
		D	46.234 (498) 露台 Balcony : 2.0 (22); 工作平台 Utility Platform : 1.5 (16)	-	1.525 (16)	-	-	-	-	-	-	-	-
		E	46.234 (498) 露台 Balcony : 2.0 (22); 工作平台 Utility Platform : 1.5 (16)	-	1.525 (16)	-	-	-	-	-	-	-	-
		F	46.115 (496) 露台 Balcony : 2.0 (22); 工作平台 Utility Platform : 1.5 (16) 陽台 Verandah : 1.434 (15)	-	-	-	1.884 (20)	-	-	-	-	-	-
		G	50.578 (544) 露台 Balcony : 2.0 (22); 工作平台 Utility Platform : 1.5 (16) 陽台 Verandah : 1.434 (15)	-	-	-	1.830 (20)	-	-	-	-	-	-
	39/F & 40/F 複式單位 Duplex Units	A	266.895 (2,873) 露台 Balcony : —; 工作平台 Utility Platform : — 陽台 Verandah : 7.084 (76)	5.362 (58)	-	-	75.878 (817)	-	-	-	-	-	-
		B	254.742 (2,742) 露台 Balcony : —; 工作平台 Utility Platform : — 陽台 Verandah : 7.084 (76)	4.438 (48)	-	-	75.878 (817)	-	-	-	-	-	-

實用面積及屬該住宅物業其他指明項目的面積是按照《一手住宅物業銷售條例》第8條及附表2第2部的計算分別得出的。
The saleable area and area of other specified items of the residential property are calculated respectively in accordance with Section 8 and Part 2 of Schedule 2 of the Residential Properties (First-hand Sales) Ordinance.

備註: 上述所列以平方米顯示之面積乃依據最近的批准建築圖則計算。以平方呎顯示之面積均依據1平方米=10.764平方呎換算, 並四捨五入至整數。
Note: Areas in metres as specified in the above are calculated in accordance with the latest approved building plans. Areas in square feet are converted at a rate of 1 square metre to 10.764 square feet and rounded to the nearest integer.

12. 期數中的停車位的樓面平面圖 FLOOR PLANS OF PARKING SPACES IN THE PHASE

地下平面圖 GROUND FLOOR PLAN



停車位數目及停車位面積 Number and Area of Parking Spaces

停車位類別 Type of Parking Spaces	位置 Location	數量 No.	尺寸(長 x 闊) (米) Dimension (L x W) (m)	每個車位面積(平方米) Area of each parking space (sq. m.)
住宅住客車位 Residential Private Parking Space	G/F	36	5.0 x 2.5	12.5
暢通易達停車位 Accessible Car Parking Space	G/F	1	5.0 x 3.5	17.5
住宅電單車車位 Residential Motorcycle Parking Space	G/F	17	2.4 x 1.0	2.4
住宅上落貨車位 Residential Loading & Unloading Space	G/F	5	11.0 x 3.5	38.5



發展項目期數的分界線
Boundary line for phases of the development

13. 臨時買賣合約的摘要 SUMMARY OF PRELIMINARY AGREEMENT FOR SALE AND PURCHASE

- 買方在簽立臨時買賣合約時向賣方(擁有人)繳付相等於樓價5%之臨時訂金。
- 買方在簽署臨時買賣合約時支付的臨時訂金，會由代表擁有人行事的律師事務所以保證金保存人的身份持有。
- 如買方沒有在訂立該臨時買賣合約之後的5個工作日內簽立正式買賣合約 –
 - 該臨時買賣合約即告終止；及
 - 買方支付的臨時訂金，即予沒收；及
 - 賣方(擁有人)不得就買方沒有簽立正式買賣合約，而對買方提出進一步申索。

- A preliminary deposit which is equal to 5% of the purchase price is payable by the purchaser to the vendor (the owner) upon signing of the preliminary agreement for sale and purchase.
- The preliminary deposit paid by the purchaser on the signing of that preliminary agreement for sale and purchase will be held by a firm of solicitors acting for the owner, as stakeholders.
- If the purchaser fails to sign the formal agreement for sale and purchase within 5 working days after the date on which the purchaser enters into that preliminary agreement for sale and purchase –
 - that preliminary agreement for sale and purchase is terminated; and
 - the preliminary deposit paid by the purchaser is forfeited; and
 - the vendor (the owner) does not have any further claim against the purchaser for the failure.

14. 公契的摘要

SUMMARY OF DEED OF MUTUAL COVENANT

1. 發展項目的公用部分

「公用地方與設施」統指屋苑公用地方與設施(供屋苑整體公用及共享)、發展項目住宅公用地方與設施(供住宅發展整體公用及共享)、發展期住宅公用地方與設施(供個別發展期的住宅發展公用及共享)及相關的副公契所指定的屋苑其他公用地方與設施，並在適用的情況下包括《建築物管理條例》(第344章)第2條所指的“公用部分”及《建築物管理條例》(第344章)附表1所列舉的相關公用部分。

屋苑公用地方與設施包括但不限於第一期屋苑公用地方與設施、第二期屋苑公用地方與設施、第三期屋苑公用地方與設施、第四期屋苑公用地方與設施、第五期屋苑公用地方與設施、斜坡及護土牆、安裝或使用天線廣播分導系統或電訊網絡設施的地方、公共天線、污水管、排水渠及所有供屋苑整體公用及共享的地方與設施。

第一期屋苑公用地方包括但不限於第一期基座的外牆(不包括構成第一期商業發展一部分的廣告位及車場告示位)、通行道路(可供進入各期發展)及部分公眾行人通道。第二期屋苑公用地方包括但不限於該些位於第二期內的屋苑公用地方。第三期屋苑公用地方包括但不限於該些位於第三期內的屋苑公用地方。第四期屋苑公用地方包括但不限於該些位於第四期內的屋苑公用地方。第五期屋苑公用地方包括但不限於該些位於第五期內的屋苑公用地方。

發展項目住宅公用地方與設施包括但不限於第一期發展項目住宅公用地方與設施、第二期發展項目住宅公用地方與設施、第三期發展項目住宅公用地方與設施、第四期發展項目住宅公用地方與設施、第五期發展項目住宅公用地方與設施、康樂地方與設施及供所有發展期的住宅發展整體公用及共享的地方與設施。

第一期發展項目住宅公用地方包括但不限於第一期訪客車位及第一期住宅上落客貨車位。第二期發展項目住宅公用地方包括但不限於第二期住宅上落客貨車位。第三期發展項目住宅公用地方包括但不限於第三期住宅上落客貨車位。第四期發展項目住宅公用地方包括但不限於第四期住宅上落客貨車位、第四期訪客電單車位、第四期訪客車位及第四期單車停泊區。第五期發展項目住宅公用地方包括但不限於第五期住宅上落客貨車位及第五期訪客車位。

發展期住宅公用地方與設施包括但不限於第一期住宅公用地方與設施、第二期住宅公用地方與設施、第三期住宅公用地方與設施、第四期住宅公用地方與設施、第五期住宅公用地方與設施、專屬個別發展期的住宅發展內的所有升降機、電線、電纜、導管、水管、排水渠及所有機電裝置及設備；以及供個別發展期的住宅發展公用及共享的地方與設施。

第一期住宅公用地方包括但不限於第一座、第二座、第三座及第五座的外牆(包括玻璃幕牆(其可開啓的部分除外)及冷氣機平台)、入口大堂、升降機大堂、公用走廊及物流房。第二期住宅公用地方包括但不限於第十八座、第十九座、第二十座及第二十一座的外牆(包括玻璃幕牆系統(其可開啓的部分及完全包圍或面向第二期住宅單位的玻璃嵌板除外)及冷氣機平台)、入口大堂、升降機大堂、公用走廊及物流房。第三期住宅公用地方包括但不限於第十六座、第十七座、第二十二座、第二十三座及第二十五座的外牆(包括玻璃幕牆系統(其可開啓的部分及完全包圍或面向第三期住宅單位的玻璃嵌板除外)及冷氣機平台)、入口大堂、升降機大堂、公用走廊及物流房。第四期住宅公用地方包括但不限於第六座、第七座及第八座的外牆(包括玻璃幕牆系統(其可開啓的部分及完全包圍或面向第四期住宅單位的玻璃嵌板除外)及冷氣機平台)、入口大堂、升降機大堂、公用走廊及物流房。第五期住宅公用地方包括但不限於第九座、第十座、第十一座、第十二座及第十五座的外牆(包括玻璃幕牆系統(其可開啓的部分及完全包圍或面向第五期住宅單位的玻璃嵌板除外)及冷氣機平台)、入口大堂、升降機大堂、公用走廊及物流房。

2. 分配予期數中的每個住宅物業的不可分割份數的數目

第16座								
樓層* \ 室	A	B	C	D	E	F	G	H
地下及1樓(複式)	310/70,500	265/70,500	-	-	-	-	-	-
3樓	98/70,500	53/70,500	50/70,500	47/70,500	47/70,500	47/70,500	78/70,500	55/70,500
5樓-9樓、12樓、15樓-17樓及20樓-23樓	98/70,500	52/70,500	49/70,500	47/70,500	47/70,500	47/70,500	78/70,500	55/70,500
10樓及18樓	98/70,500	51/70,500	48/70,500	47/70,500	47/70,500	46/70,500	76/70,500	55/70,500
11樓及19樓	98/70,500	47/70,500	44/70,500	47/70,500	47/70,500	43/70,500	72/70,500	55/70,500
25樓	132/70,500	51/70,500	48/70,500	47/70,500	47/70,500	46/70,500	76/70,500	-
26樓	129/70,500	47/70,500	44/70,500	47/70,500	47/70,500	43/70,500	72/70,500	-
27樓-28樓	130/70,500	52/70,500	49/70,500	47/70,500	47/70,500	47/70,500	78/70,500	-
29樓	131/70,500	48/70,500	46/70,500	47/70,500	47/70,500	44/70,500	73/70,500	-
30樓	131/70,500	47/70,500	44/70,500	47/70,500	47/70,500	43/70,500	72/70,500	-
31樓及32樓(複式)	266/70,500	281/70,500	-	-	-	-	-	-

第17座								
樓層* \ 室	A	B	C	D	E	F	G	H
地下及1樓(複式)	310/70,500	265/70,500	-	-	-	-	-	-
3樓	97/70,500	78/70,500	47/70,500	47/70,500	47/70,500	50/70,500	53/70,500	55/70,500
5樓-9樓、12樓、15樓-17樓及20樓-23樓	97/70,500	78/70,500	47/70,500	47/70,500	47/70,500	49/70,500	52/70,500	55/70,500
10樓及18樓	98/70,500	76/70,500	46/70,500	47/70,500	47/70,500	48/70,500	51/70,500	55/70,500
11樓及19樓	98/70,500	72/70,500	43/70,500	47/70,500	47/70,500	44/70,500	47/70,500	56/70,500
25樓	132/70,500	76/70,500	46/70,500	47/70,500	47/70,500	48/70,500	51/70,500	-
26樓	129/70,500	72/70,500	43/70,500	47/70,500	47/70,500	44/70,500	47/70,500	-
27樓-30樓	130/70,500	78/70,500	47/70,500	47/70,500	47/70,500	49/70,500	52/70,500	-
31樓	131/70,500	73/70,500	44/70,500	47/70,500	47/70,500	46/70,500	48/70,500	-
32樓	131/70,500	72/70,500	43/70,500	47/70,500	47/70,500	44/70,500	47/70,500	-
33樓及35樓(複式)	266/70,500	281/70,500	-	-	-	-	-	-

第22座								
樓層* \ 室	A	B	C	D	E	F	G	H
地下及1樓(複式)	310/70,500	265/70,500	-	-	-	-	-	-
3樓、5樓-11樓、16樓-20樓及23樓	97/70,500	78/70,500	47/70,500	47/70,500	47/70,500	49/70,500	52/70,500	55/70,500
12樓及21樓	98/70,500	76/70,500	46/70,500	47/70,500	47/70,500	48/70,500	50/70,500	55/70,500
15樓及22樓	98/70,500	72/70,500	43/70,500	47/70,500	47/70,500	44/70,500	47/70,500	56/70,500
25樓	132/70,500	78/70,500	47/70,500	47/70,500	47/70,500	49/70,500	52/70,500	-
26樓	129/70,500	78/70,500	47/70,500	47/70,500	47/70,500	49/70,500	52/70,500	-
27樓-28樓及31樓-33樓	130/70,500	78/70,500	47/70,500	47/70,500	47/70,500	49/70,500	52/70,500	-
29樓	131/70,500	76/70,500	46/70,500	47/70,500	47/70,500	48/70,500	50/70,500	-
30樓及36樓	131/70,500	72/70,500	43/70,500	47/70,500	47/70,500	44/70,500	47/70,500	-
35樓	131/70,500	73/70,500	44/70,500	47/70,500	47/70,500	46/70,500	48/70,500	-
37樓及38樓(複式)	266/70,500	281/70,500	-	-	-	-	-	-

第23座								
樓層* \ 室	A	B	C	D	E	F	G	H
地下及1樓(複式)	274/70,500	306/70,500	-	-	-	-	-	-
3樓、5樓-11樓、16樓-20樓及23樓	98/70,500	54/70,500	49/70,500	47/70,500	47/70,500	49/70,500	54/70,500	55/70,500
12樓及21樓	98/70,500	52/70,500	48/70,500	47/70,500	47/70,500	48/70,500	52/70,500	55/70,500
15樓及22樓	98/70,500	49/70,500	44/70,500	47/70,500	47/70,500	44/70,500	49/70,500	55/70,500
25樓	132/70,500	54/70,500	49/70,500	47/70,500	47/70,500	49/70,500	54/70,500	-
26樓	129/70,500	54/70,500	49/70,500	47/70,500	47/70,500	49/70,500	54/70,500	-
27樓-28樓、31樓-33樓及35樓-36樓	130/70,500	54/70,500	49/70,500	47/70,500	47/70,500	49/70,500	54/70,500	-
29樓	130/70,500	52/70,500	48/70,500	47/70,500	47/70,500	48/70,500	52/70,500	-
30樓及38樓	131/70,500	49/70,500	44/70,500	47/70,500	47/70,500	44/70,500	49/70,500	-
37樓	130/70,500	50/70,500	46/70,500	47/70,500	47/70,500	46/70,500	50/70,500	-
39樓及40樓(複式)	279/70,500	266/70,500	-	-	-	-	-	-

第25座								
樓層* \ 室	A	B	C	D	E	F	G	H
地下及1樓(複式)	327/70,500	-	-	-	-	-	-	-
3樓、5樓-11樓及16樓-19樓	71/70,500	54/70,500	49/70,500	47/70,500	47/70,500	49/70,500	54/70,500	71/70,500
12樓	71/70,500	52/70,500	48/70,500	47/70,500	47/70,500	48/70,500	52/70,500	71/70,500
15樓	71/70,500	49/70,500	44/70,500	47/70,500	47/70,500	44/70,500	49/70,500	71/70,500
20樓	129/70,500	54/70,500	49/70,500	47/70,500	47/70,500	49/70,500	54/70,500	-
21樓	130/70,500	52/70,500	48/70,500	47/70,500	47/70,500	48/70,500	52/70,500	-
22樓、30樓及38樓	132/70,500	49/70,500	44/70,500	47/70,500	47/70,500	44/70,500	49/70,500	-
23樓、25樓-28樓、31樓-33樓及35樓-36樓	131/70,500	54/70,500	49/70,500	47/70,500	47/70,500	49/70,500	54/70,500	-
29樓	131/70,500	52/70,500	48/70,500	47/70,500	47/70,500	48/70,500	52/70,500	-
37樓	131/70,500	50/70,500	46/70,500	47/70,500	47/70,500	46/70,500	50/70,500	-
39樓及40樓(複式)	279/70,500	266/70,500	-	-	-	-	-	-

*各座不設4樓、13樓、14樓、24樓及34樓。

3. 發展項目的管理人的委任年期

管理人首屆任期由主公契日期起計為期兩年，其後續任至按主公契的條文終止管理人的委任為止。

4. 發展項目中的住宅物業的擁有人之間分擔管理開支的基準

每個住宅單位的業主應在每個曆月首日預繳按住宅管理預算案其應繳的年度開支份額的十二份之一的管理費，以分擔屋苑的管理開支(包括管理人酬金)。該應繳的份額比例為：(i)就發展項目住宅管理預算案而言，應與分配給其在已落成發展期內的住宅單位的管理份數佔分配給在屋苑已落成發展期內的所有住宅單位的總管理份數的比例相同；及(ii)就發展期住宅管理預算案而言，應與分配給其住宅單位的管理份數佔分配給在同一發展期內的所有住宅單位的總管理份數的比例相同。

5. 計算管理費按金的基準

管理費按金相等於業主就其單位按首個年度管理預算案計算而須繳付的三個月管理費。

6. 賣方在發展項目中保留作自用的範圍(如有的話)

不適用。

備註：(a) 此公契的摘要包括關乎沙田市地段第502號按日期為2014年1月20日的主公契的摘要、關乎沙田市地段第502號(發展項目第二期)按日期為2015年1月9日的副公契的摘要、關乎沙田市地段第502號(發展項目第三期)按日期為2016年4月7日的副公契的摘要、關乎沙田市地段第502號(發展項目第四期)按日期為2016年9月1日的副公契的摘要及關乎沙田市地段第502號(發展項目第五期)按日期為2017年2月8日的副公契的摘要。

(b) 除非本售樓說明書另有規定，本公契的摘要內所採用的詞彙與該詞彙在主公契及所有副公契內的意思相同。

14. 公契的摘要

SUMMARY OF DEED OF MUTUAL COVENANT

1. The common parts of the development

“Common Areas and Facilities” means collectively the Estate Common Areas and Facilities (intended for the common use and benefit of the Estate as a whole), the Development Residential Common Areas and Facilities (intended for the common use and benefit of the Residential Development of all Phases), the Phase Residential Common Areas and Facilities (intended for the common use and benefit of the Residential Development of a particular Phase) and other common areas and facilities to be designated in the relevant Sub-Deeds and, where applicable, includes those appropriate and relevant “common parts” specified in section 2 of the Building Management Ordinance (Cap.344) and those parts specified in Schedule 1 to the Building Management Ordinance (Cap.344).

The Estate Common Areas and Facilities includes but not limited to the Estate Common Areas and Facilities In Phase One, Estate Common Areas and Facilities In Phase Two, Estate Common Areas and Facilities In Phase Three, Estate Common Areas and Facilities In Phase Four, Estate Common Areas and Facilities In Phase Five, Slopes and Retaining Walls, areas for the installation or use of aerial broadcast distribution or telecommunication network facilities, communal aerial, sewers and drains, and such areas and facilities intended for the common use and benefit of the Estate as a whole.

The Estate Common Areas In Phase One includes but not limited to the external walls of the podium in Phase 1 (excluding the Advertising Spaces and the Car Park Signage Spaces which form part of the Commercial Development In Phase One), Access Roadway (providing access to all Phases) and portions of the Public Pedestrian Walkway. The Estate Common Areas In Phase Two includes such parts of the Estate Common Areas in Phase 2. The Estate Common Areas In Phase Three includes such parts of the Estate Common Areas in Phase 3. The Estate Common Areas In Phase Four includes such parts of the Estate Common Areas in Phase 4. The Estate Common Areas In Phase Five includes such parts of the Estate Common Areas In Phase 5.

The Development Residential Common Areas and Facilities includes but not limited to the Development Residential Common Areas and Facilities In Phase One, Development Residential Common Areas and Facilities In Phase Two, Development Residential Common Areas and Facilities In Phase Three, Development Residential Common Areas and Facilities In Phase Four, Development Residential Common Areas and Facilities In Phase Five, Recreational Areas and Facilities, and such areas and facilities intended for the common use and benefit of the Residential Development of all Phases.

The Development Residential Common Areas In Phase One includes but not limited to the Visitors Car Parking Spaces In Phase One and Residential Loading and Unloading Spaces In Phase One. The Development Residential Common Areas In Phase Two includes but not limited to the Residential Loading and Unloading Spaces In Phase Two. The Development Residential Common Areas In Phase Three includes but not limited to the Residential Loading and Unloading Spaces In Phase Three. The Development Residential Common Areas In Phase Four includes but not limited to the Residential Loading and Unloading Spaces In Phase Four, the Visitors Motorcycle Parking Spaces In Phase Four, the Visitors Car Parking Spaces In Phase Four and the Bicycle Parking Areas In Phase Four. The Development Residential Common Areas In Phase Five includes but not limited to the Residential Loading and Unloading Spaces In Phase Five and the Visitors Car Parking Spaces In Phase Five.

The Phase Residential Common Areas and Facilities includes but not limited to the Phase One Residential Common Areas and Facilities, Phase Two Residential Common Areas and Facilities, Phase Three Residential Common Areas and Facilities, Phase Four Residential Common Areas and Facilities, Phase Five Residential Common Areas and Facilities, all lifts, wires, cables, ducts, pipes, drains and all mechanical and electrical installation and equipment exclusively for the Residential Development of a particular Phase, and such areas and facilities intended for the common use and benefit of the Residential Development of a particular Phase.

The Phase One Residential Common Areas includes but not limited to the external walls (including the curtain walls (except the openable parts thereof) and the air-conditioning platforms), entrance lobbies, lift lobbies, common corridors and logistic service rooms of Block 1, Block 2, Block 3 and Block 5. The Phase Two Residential Common Areas includes but not limited to the external walls (including the curtain wall systems (except the openable parts thereof and such pieces of glass panels wholly enclosing or fronting a Residential Unit In Phase Two) and the air-conditioner platforms), entrance lobbies, lift lobbies, common corridors and logistic service rooms of Block 18, Block 19, Block 20 and Block 21. The Phase Three Residential Common Areas includes but not limited to the external walls (including the curtain wall systems (except the openable

parts thereof and such pieces of glass panels wholly enclosing or fronting a Residential Unit In Phase Three) and the air-conditioner platforms), entrance lobbies, lift lobbies, common corridors and logistic service rooms of Block 16, Block 17, Block 22, Block 23 and Block 25. The Phase Four Residential Common Areas includes but not limited to the external walls (including the curtain wall systems (except the openable parts thereof and such pieces of glass panels wholly enclosing or fronting a Residential Unit In Phase Four) and the air-conditioner platforms), entrance lobbies, lift lobbies, common corridors and logistic service rooms of Block 6, Block 7 and Block 8. The Phase Five Residential Common Areas includes but not limited to the external walls (including the curtain wall systems (except the openable parts thereof and such pieces of glass panels wholly enclosing or fronting a Residential Unit In Phase Five) and the air-conditioner platforms), entrance lobbies, lift lobbies, common corridors and logistic service rooms of Block 9, Block 10, Block 11, Block 12 and Block 15.

2. The number of undivided shares assigned to each residential property in the Phase

Block 16								
Floor* \ Flat	A	B	C	D	E	F	G	H
G/F & 1/F (Duplex)	310/70,500	265/70,500	-	-	-	-	-	-
3/F	98/70,500	53/70,500	50/70,500	47/70,500	47/70,500	47/70,500	78/70,500	55/70,500
5/F - 9/F, 12/F, 15/F - 17/F & 20/F - 23/F	98/70,500	52/70,500	49/70,500	47/70,500	47/70,500	47/70,500	78/70,500	55/70,500
10/F & 18/F	98/70,500	51/70,500	48/70,500	47/70,500	47/70,500	46/70,500	76/70,500	55/70,500
11/F & 19/F	98/70,500	47/70,500	44/70,500	47/70,500	47/70,500	43/70,500	72/70,500	55/70,500
25/F	132/70,500	51/70,500	48/70,500	47/70,500	47/70,500	46/70,500	76/70,500	-
26/F	129/70,500	47/70,500	44/70,500	47/70,500	47/70,500	43/70,500	72/70,500	-
27/F - 28/F	130/70,500	52/70,500	49/70,500	47/70,500	47/70,500	47/70,500	78/70,500	-
29/F	131/70,500	48/70,500	46/70,500	47/70,500	47/70,500	44/70,500	73/70,500	-
30/F	131/70,500	47/70,500	44/70,500	47/70,500	47/70,500	43/70,500	72/70,500	-
31/F & 32/F (Duplex)	266/70,500	281/70,500	-	-	-	-	-	-

Block 17								
Floor* \ Flat	A	B	C	D	E	F	G	H
G/F & 1/F (Duplex)	310/70,500	265/70,500	-	-	-	-	-	-
3/F	97/70,500	78/70,500	47/70,500	47/70,500	47/70,500	50/70,500	53/70,500	55/70,500
5/F - 9/F, 12/F, 15/F - 17/F & 20/F - 23/F	97/70,500	78/70,500	47/70,500	47/70,500	47/70,500	49/70,500	52/70,500	55/70,500
10/F & 18/F	98/70,500	76/70,500	46/70,500	47/70,500	47/70,500	48/70,500	51/70,500	55/70,500
11/F & 19/F	98/70,500	72/70,500	43/70,500	47/70,500	47/70,500	44/70,500	47/70,500	56/70,500
25/F	132/70,500	76/70,500	46/70,500	47/70,500	47/70,500	48/70,500	51/70,500	-
26/F	129/70,500	72/70,500	43/70,500	47/70,500	47/70,500	44/70,500	47/70,500	-
27/F - 30/F	130/70,500	78/70,500	47/70,500	47/70,500	47/70,500	49/70,500	52/70,500	-
31/F	131/70,500	73/70,500	44/70,500	47/70,500	47/70,500	46/70,500	48/70,500	-
32/F	131/70,500	72/70,500	43/70,500	47/70,500	47/70,500	44/70,500	47/70,500	-
33/F & 35/F (Duplex)	266/70,500	281/70,500	-	-	-	-	-	-

Block 22								
Floor* \ Flat	A	B	C	D	E	F	G	H
G/F & 1/F (Duplex)	310/70,500	265/70,500	-	-	-	-	-	-
3/F, 5/F - 11/F, 16/F - 20/F & 23/F	97/70,500	78/70,500	47/70,500	47/70,500	47/70,500	49/70,500	52/70,500	55/70,500
12/F & 21/F	98/70,500	76/70,500	46/70,500	47/70,500	47/70,500	48/70,500	50/70,500	55/70,500
15/F & 22/F	98/70,500	72/70,500	43/70,500	47/70,500	47/70,500	44/70,500	47/70,500	56/70,500
25/F	132/70,500	78/70,500	47/70,500	47/70,500	47/70,500	49/70,500	52/70,500	-
26/F	129/70,500	78/70,500	47/70,500	47/70,500	47/70,500	49/70,500	52/70,500	-
27/F - 28/F & 31/F - 33/F	130/70,500	78/70,500	47/70,500	47/70,500	47/70,500	49/70,500	52/70,500	-
29/F	131/70,500	76/70,500	46/70,500	47/70,500	47/70,500	48/70,500	50/70,500	-
30/F & 36/F	131/70,500	72/70,500	43/70,500	47/70,500	47/70,500	44/70,500	47/70,500	-
35/F	131/70,500	73/70,500	44/70,500	47/70,500	47/70,500	46/70,500	48/70,500	-
37/F & 38/F (Duplex)	266/70,500	281/70,500	-	-	-	-	-	-

Block 23								
Floor* \ Flat	A	B	C	D	E	F	G	H
G/F & 1/F (Duplex)	274/70,500	306/70,500	-	-	-	-	-	-
3/F, 5/F - 11/F, 16/F - 20/F & 23/F	98/70,500	54/70,500	49/70,500	47/70,500	47/70,500	49/70,500	54/70,500	55/70,500
12/F & 21/F	98/70,500	52/70,500	48/70,500	47/70,500	47/70,500	48/70,500	52/70,500	55/70,500
15/F & 22/F	98/70,500	49/70,500	44/70,500	47/70,500	47/70,500	44/70,500	49/70,500	55/70,500
25/F	132/70,500	54/70,500	49/70,500	47/70,500	47/70,500	49/70,500	54/70,500	-
26/F	129/70,500	54/70,500	49/70,500	47/70,500	47/70,500	49/70,500	54/70,500	-
27/F - 28/F, 31/F - 33/F & 35/F - 36/F	130/70,500	54/70,500	49/70,500	47/70,500	47/70,500	49/70,500	54/70,500	-
29/F	130/70,500	52/70,500	48/70,500	47/70,500	47/70,500	48/70,500	52/70,500	-
30/F & 38/F	131/70,500	49/70,500	44/70,500	47/70,500	47/70,500	44/70,500	49/70,500	-
37/F	130/70,500	50/70,500	46/70,500	47/70,500	47/70,500	46/70,500	50/70,500	-
39/F & 40/F (Duplex)	279/70,500	266/70,500	-	-	-	-	-	-

Block 25								
Floor* \ Flat	A	B	C	D	E	F	G	H
G/F & 1/F (Duplex)	327/70,500	-	-	-	-	-	-	-
3/F, 5/F - 11/F & 16/F - 19/F	71/70,500	54/70,500	49/70,500	47/70,500	47/70,500	49/70,500	54/70,500	71/70,500
12/F	71/70,500	52/70,500	48/70,500	47/70,500	47/70,500	48/70,500	52/70,500	71/70,500
15/F	71/70,500	49/70,500	44/70,500	47/70,500	47/70,500	44/70,500	49/70,500	71/70,500
20/F	129/70,500	54/70,500	49/70,500	47/70,500	47/70,500	49/70,500	54/70,500	-
21/F	130/70,500	52/70,500	48/70,500	47/70,500	47/70,500	48/70,500	52/70,500	-
22/F, 30/F & 38/F	132/70,500	49/70,500	44/70,500	47/70,500	47/70,500	44/70,500	49/70,500	-
23/F, 25/F - 28/F, 31/F - 33/F & 35/F - 36/F	131/70,500	54/70,500	49/70,500	47/70,500	47/70,500	49/70,500	54/70,500	-
29/F	131/70,500	52/70,500	48/70,500	47/70,500	47/70,500	48/70,500	52/70,500	-
37/F	131/70,500	50/70,500	46/70,500	47/70,500	47/70,500	46/70,500	50/70,500	-
39/F & 40/F (Duplex)	279/70,500	266/70,500	-	-	-	-	-	-

*4/F, 13/F, 14/F, 24/F and 34/F are omitted for all blocks.

3. The term of years for which the manager of the development is appointed

The Manager is to be appointed for an initial term of two years from the date of the Principal Deed of Mutual Covenant and to be continued thereafter until the termination of the Manager’s appointment in accordance with the provisions thereof.

4. The basis on which the management expenses are shared among the owners of the residential properties in the development

The Owner of each Residential Unit shall contribute towards the management expenses (including the Manager’s remuneration) of the Estate by paying in advance on the first day of each calendar month 1/12th of the due proportion of the annual expenditure in accordance with the Residential Management Budget which due proportion shall be : (i) in so far as the Development Residential Management Budget is concerned, the same proportion as the number of Management Units allocated to his Residential Unit in the Completed Phases bears to the total number of Management Units allocated to all the Residential Units in the Completed Phases within the Estate; and (ii) in so far as the Phase Residential Management Budget is concerned, the same proportion as the number of Management Units allocated to his Residential Unit bears to the total number of Management Units allocated to all Residential Units in the same Phase of his Residential Unit.

5. The basis on which the management fee deposit is fixed

The management fee deposit is equivalent to three months’ management contribution based on the first annual Management Budget payable by the Owner in respect of his Unit.

6. The area (if any) in the development retained by the vendor for its own use

Not applicable.

Note: (a) This Summary of Deed of Mutual Covenant includes the summary of the Principal Deed of Mutual Covenant in respect of Sha Tin Town Lot No.502 dated 20th January 2014, the summary of the Sub-Deed of Mutual Covenant in respect of Sha Tin Town Lot No.502 (Phase 2 of the development) dated 9th January 2015, the summary of the Sub-Deed of Mutual Covenant in respect of Sha Tin Town Lot No.502 (Phase 3 of the development) dated 7th April 2016, the summary of the Sub-Deed of Mutual Covenant in respect of Sha Tin Town Lot No.502 (Phase 4 of the development) dated 1st September 2016 and the summary of the Sub-Deed of Mutual Covenant in respect of Sha Tin Town Lot No. 502 (Phase 5 of the development) dated 8th February 2017.

(b) Unless otherwise defined in this sales brochure, the capitalized terms used in this Summary of Deed of Mutual Covenant shall have the same meaning of such terms in the Principal Deed of Mutual Covenant and all Sub-Deeds of Mutual Covenant.