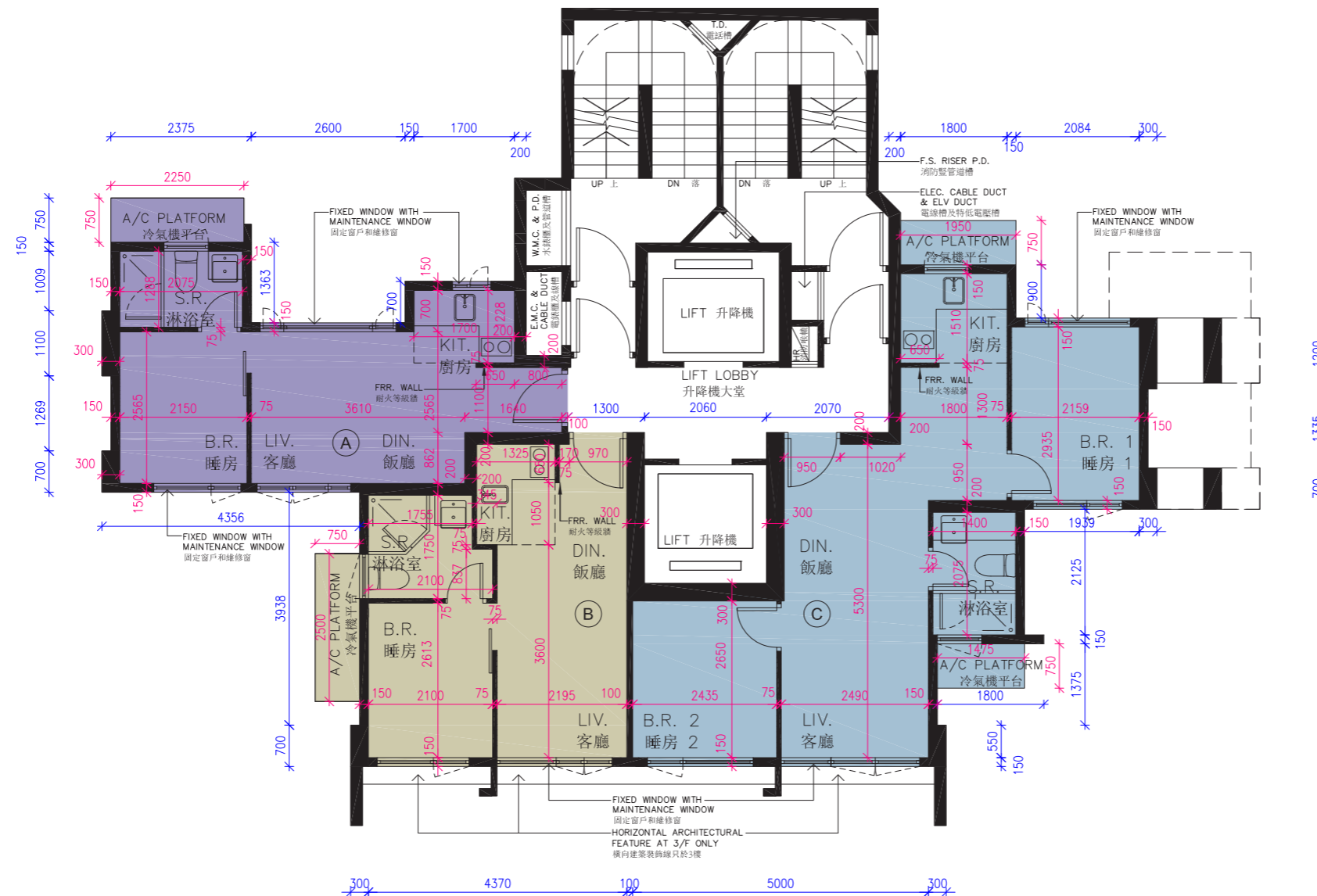


FLOOR PLANS OF RESIDENTIAL PROPERTIES IN THE DEVELOPMENT

發展項目的住宅物業的樓面平面圖

3/F, 5/F - 8/F Floor Plan

3樓、5樓至8樓樓面平面圖



Note:

- The dimensions on the floor plans are all structural dimensions in millimetre.
- As provided in the approved building plans for the Development, the floor-to-floor height of each residential property on 3/F, 5/F - 8/F of the Development is:
For 3/F, 5/F and 6/F: 3090mm;
For 7/F and 8/F: 3240mm.
- As provided in the approved building plans for the Development, the thicknesses of the floor slabs (excluding plaster) of each residential property on 3/F, 5/F - 8/F of the Development is:
For 3/F, 5/F - 8/F: 125mm, 150mm, 175mm and 300mm.
- The internal areas of the residential properties on the upper floors will generally be slightly larger than those on the lower floors because of the reducing thickness of the structural walls on the upper floors.

備註：

- 樓面平面圖所列之數字為以毫米標示之建築結構尺寸。
- 按發展項目的經批准的建築圖則所規定者，發展項目3樓、5樓至8樓每個住宅物業的層與層之間的高度為：
3樓、5樓及6樓為3090毫米；
7樓及8樓為3240毫米。
- 按發展項目的經批准的建築圖則所規定者，發展項目3樓、5樓至8樓每個住宅物業的樓板（不包括灰泥）的厚度為：
3樓、5樓至8樓為125毫米、150毫米、175毫米及300毫米。
- 因住宅物業的較高樓層的結構牆的厚度遞減，較高樓層的內部面積，一般比較低樓層的內部面積稍大。

Legends of Floor Plan 樓面平面圖圖例：

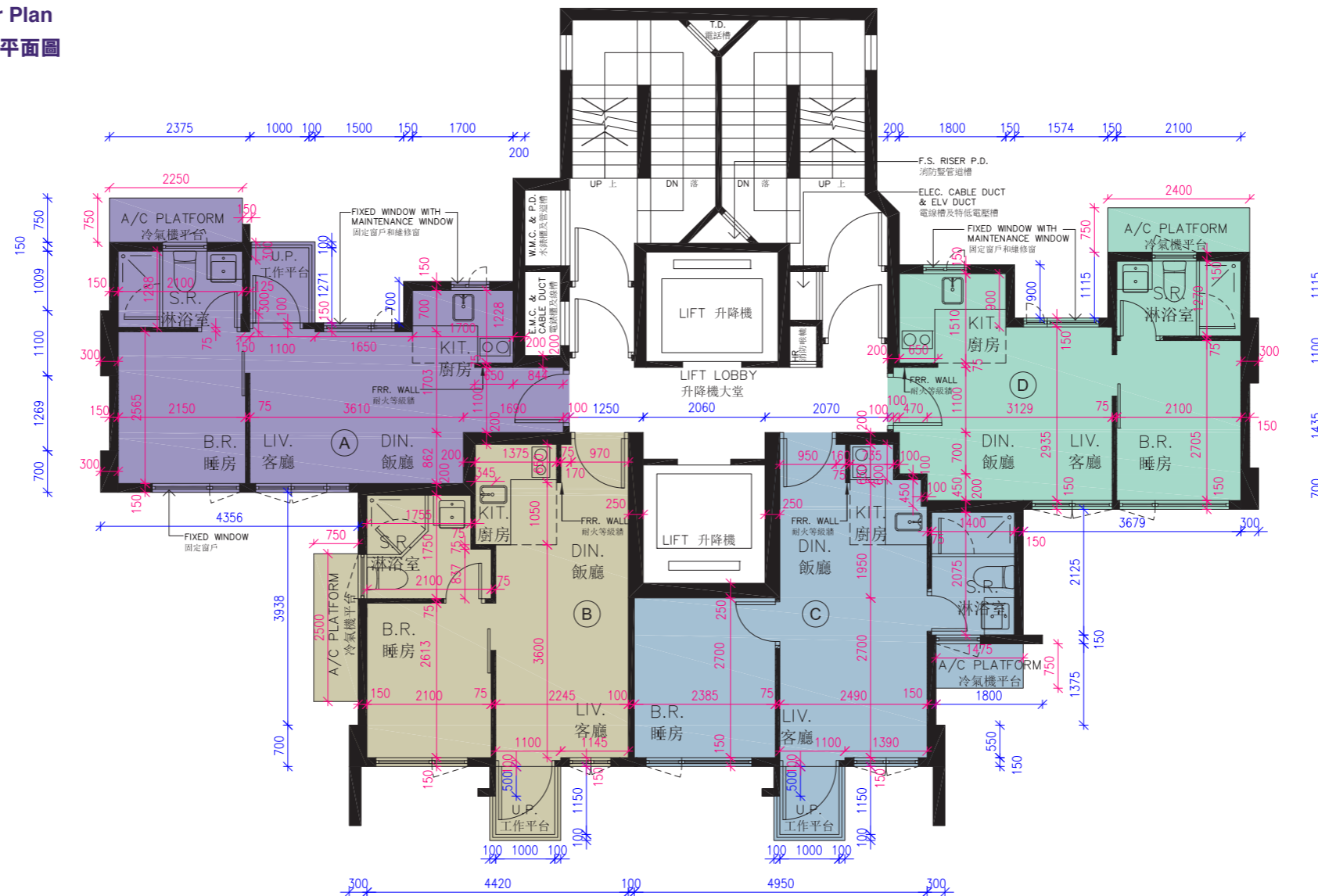
A/C PLATFORM = Air-conditioning Platform 冷氣機平台 B.R. = Bedroom 睡房 B.R. 1 = Bedroom 1 睡房 1 B.R. 2 = Bedroom 2 睡房 2 DN = Down 落 DIN. = Dining Room 飯廳 E.M.C. & CABLE DUCT = Electricity Meter Cabinet and Cable Duct 電錶櫃及線槽 ELEC. CABLE DUCT & ELV DUCT = Electricity Cable Duct and Extra-low Voltage Duct 電線槽及特低電壓槽 F.S. RISER P.D. = Fire Services Riser Pipe Duct 消防豎管道槽 FRR. WALL = Fire Resistant Rating Wall 耐火等級牆 HR = Hose Reel 消防喉轆 KIT. = Kitchen 廚房 LIFT = 升降機 LIFT LOBBY = 升降機大堂 LIV. = Living Room 客廳 P.D. = Pipe Duct 管道槽 S.R. = Shower Room 淋浴室 T.D. = Telephone Duct 電話槽 UP = UP 上 U.P. = Utility Platform 工作平台 W.M.C. & P.D. = Water Meter Cabinet and Pipe Duct 水錶櫃及管道槽

FLOOR PLANS OF RESIDENTIAL PROPERTIES IN THE DEVELOPMENT

發展項目的住宅物業的樓面平面圖

9/F - 12/F, 15/F - 23/F and 25/F - 29/F Floor Plan

9樓至12樓、15樓至23樓及25樓至29樓樓面平面圖



Scale 比例：
0m/米 4m/米

Note:

- The dimensions on the floor plans are all structural dimensions in millimetre.
- As provided in the approved building plans for the Development, the floor-to-floor height of each residential property on 9/F to 12/F, 15/F - 23/F and 25/F - 29/F of the Development is 3500mm.
- As provided in the approved building plans for the Development, the thicknesses of the floor slabs (excluding plaster) of each residential property on 9/F - 12/F, 15/F - 23/F and 25/F - 29/F of the Development is:
For 9/F: 125mm, 175mm and 300mm;
For 10/F - 12/F, 15/F - 23/F and 25/F - 29/F: 125mm, 150mm and 175mm.
- The internal areas of the residential properties on the upper floors will generally be slightly larger than those on the lower floors because of the reducing thickness of the structural walls on the upper floors.

備註：

- 樓面平面圖所列之數字為以毫米標示之建築結構尺寸。
- 按發展項目的經批准的建築圖則所規定者，發展項目9樓至12樓、15樓至23樓及25樓至29樓每個住宅物業的層與層之間的高度為3500毫米。
- 按發展項目的經批准的建築圖則所規定者，9樓至12樓、15樓至23樓及25樓至29樓每個住宅物業的樓板（不包括灰泥）的厚度為：
9樓為125毫米、175毫米及300毫米；
10樓至12樓、15樓至23樓及25樓至29樓為125毫米、150毫米及175毫米。
- 因住宅物業的較高樓層的結構牆的厚度遞減，較高樓層的內部面積，一般比較低樓層的內部面積稍大。

Legends of Floor Plan 樓面平面圖圖例：

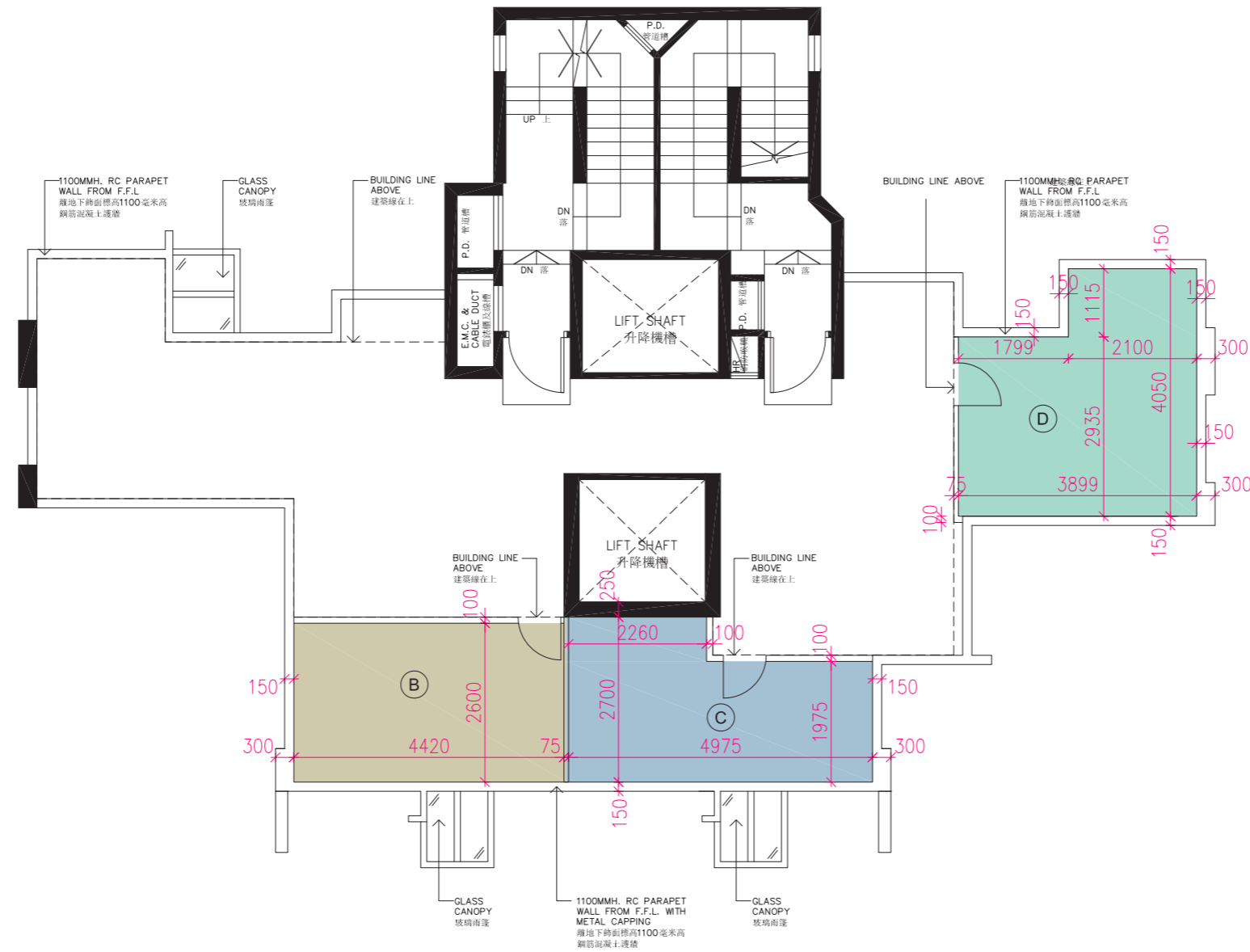
A/C PLATFORM = Air-conditioning Platform 冷氣機平台 B.R. = Bedroom 睡房 DN = Down 落 DIN. = Dining Room 飯廳 E.M.C. & CABLE DUCT = Electricity Meter Cabinet and Cable Duct 電錶櫃及線槽 ELEC. CABLE DUCT & ELV DUCT = Electricity Cable Duct and Extra-low Voltage Duct 電線槽及特低電壓槽 F.S. RISER P.D. = Fire Services Riser Pipe Duct 消防豎管道槽 FRR. WALL = Fire Resistant Rating Wall 耐火等級牆 HR = Hose Reel 消防喉轆 KIT. = Kitchen 廚房 LIFT = 升降機 LIFT LOBBY = 升降機大堂 LIV. = Living Room 客廳 P.D. = Pipe Duct 管道槽 S.R. = Shower Room 淋浴室 T.D. = Telephone Duct 電話槽 UP = UP 上 U.P. = Utility Platform 工作平台 W.M.C. & P.D. = Water Meter Cabinet and Pipe Duct 水錶櫃及管道槽

FLOOR PLANS OF RESIDENTIAL PROPERTIES IN THE DEVELOPMENT

發展項目的住宅物業的樓面平面圖

R/F Floor Plan

天台樓面平面圖



Scale 比例：
0m/米 4m/米

Note:

1. The dimensions on the floor plans are all structural dimensions in millimetre.
2. As provided in the approved building plans for the Development, the floor-to-floor height of each residential property on R/F of the Development: Not applicable.
3. As provided in the approved building plans for the Development, the thicknesses of the floor slabs (excluding plaster) of each residential property on R/F of the Development: Not applicable.
4. The internal areas of the residential properties on the upper floors will generally be slightly larger than those on the lower floors because of the reducing thickness of the structural walls on the upper floors.

備註：

1. 樓面平面圖所列之數字為以毫米標示之建築結構尺寸。
2. 按發展項目的經批准的建築圖則所規定者，發展項目天台每個住宅單位的層與層之間的高度：不適用。
3. 按發展項目的經批准的建築圖則所規定者，發展項目天台每個住宅物業的樓板（不包括灰泥）的厚度：不適用。
4. 因住宅物業的較高樓層的結構牆的厚度遞減，較高樓層的內部面積，一般比較低樓層的內部面積稍大。

Legends of Floor Plan 樓面平面圖圖例：

BUILDING LINE ABOVE = 建築線在上 DN = Down 落 E.M.C. & CABLE DUCT = Electricity Meter Cabinet and Cable Duct 電錶櫃及線槽 ELEC. CABLE DUCT & ELV DUCT = Electricity Cable Duct and Extra-low Voltage Duct 電線槽及特低電壓槽 GLASS CANOPY = 玻璃雨篷 HR = Hose Reel 消防喉轆 LIFT SHAFT = 升降機槽 LIFT LOBBY = 升降機大堂 P.D. = Pipe Duct 管道槽 UP = UP 上 1100MMH RC PARAPET WALL FROM F.F.L = 1100MMH REINFORCE CONCRETE PARAPET WALL FROM FINISHED FLOOR LEVEL 離地下飾面標高1100毫米高鋼筋混凝土護牆