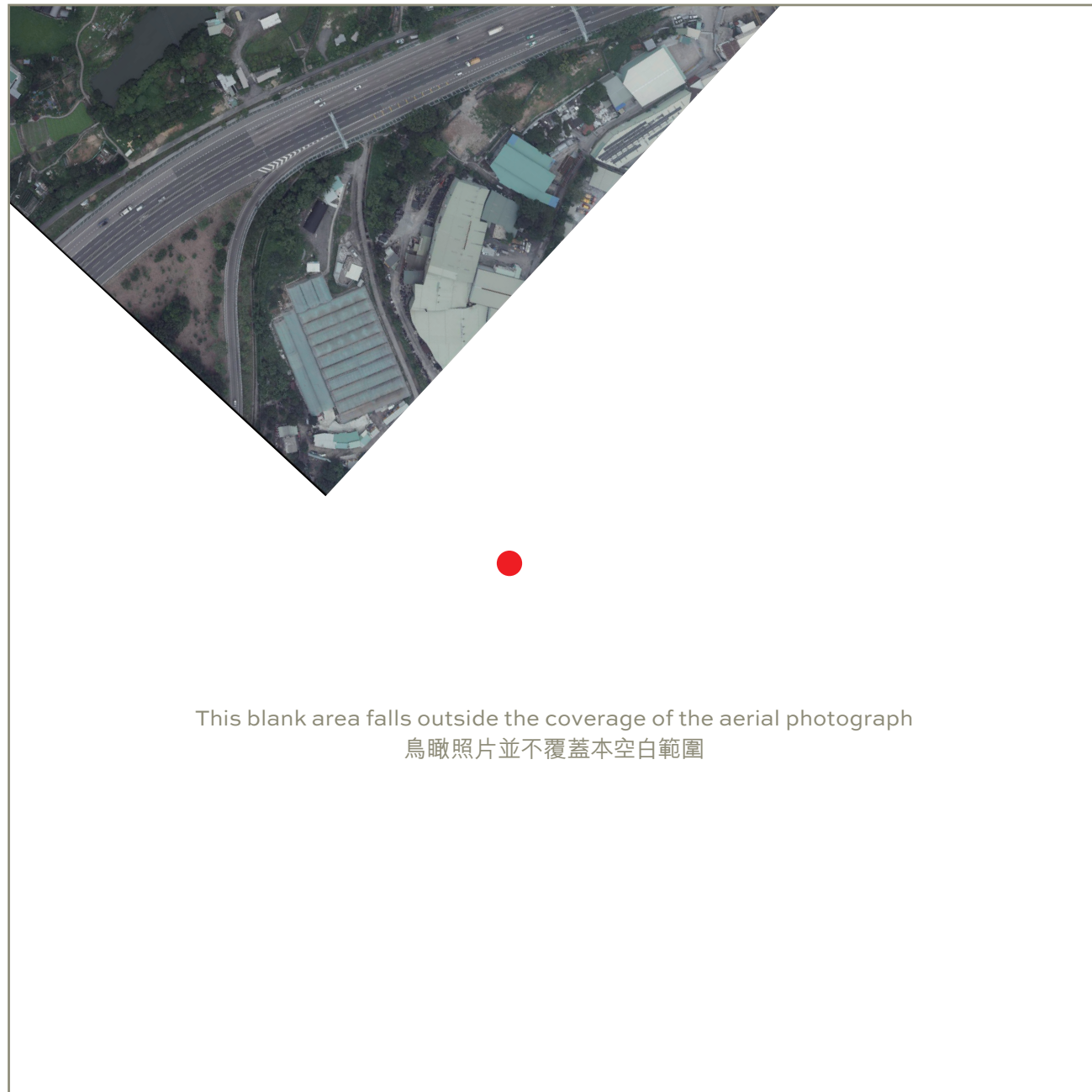


Aerial photograph of the phase of the development

發展項目期數的鳥瞰照片

Adopted from part of the aerial photograph taken by the Survey and Mapping Office of Lands Department at a flying height of 2,000 feet, photo No. E026525C, dated 26 May 2017.

摘錄自地政總署測繪處於2017年5月26日在2,000呎飛行高度拍攝之鳥瞰照片，編號為E026525C。



This blank area falls outside the coverage of the aerial photograph
鳥瞰照片並不覆蓋本空白範圍

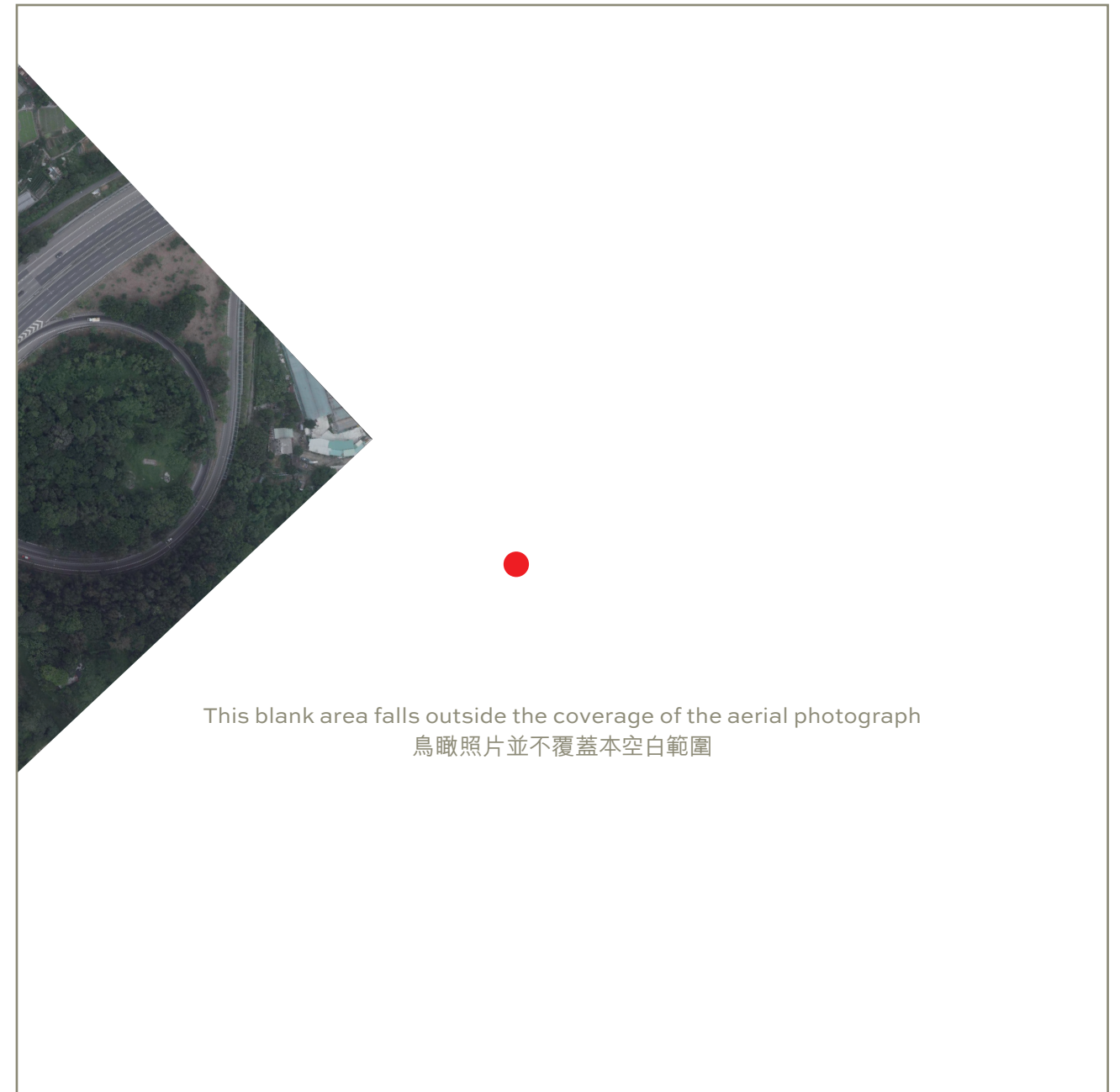
● Location of the Phase of the Development
發展項目期數的位置

Survey and Mapping Office, Lands Department, The Government of the HKSAR © Copyright reserved - reproduction by permission only.

香港特別行政區政府地政總署測繪處©版權所有，未經許可，不得複製。

Adopted from part of the aerial photograph taken by the Survey and Mapping Office of Lands Department at a flying height of 2,000 feet, photo No. E026528C, dated 26 May 2017.

摘錄自地政總署測繪處於2017年5月26日在2,000呎飛行高度拍攝之鳥瞰照片，編號為E026528C。



This blank area falls outside the coverage of the aerial photograph
鳥瞰照片並不覆蓋本空白範圍

Remarks :

1. The aerial photographs are available for free inspection during normal office hours at the sales office.
2. Due to technical reasons as a result of the irregular boundary of the Phase of the Development, the aerial photographs have shown more than the area required under the Residential Properties (First-hand Sales) Ordinance.

備註：

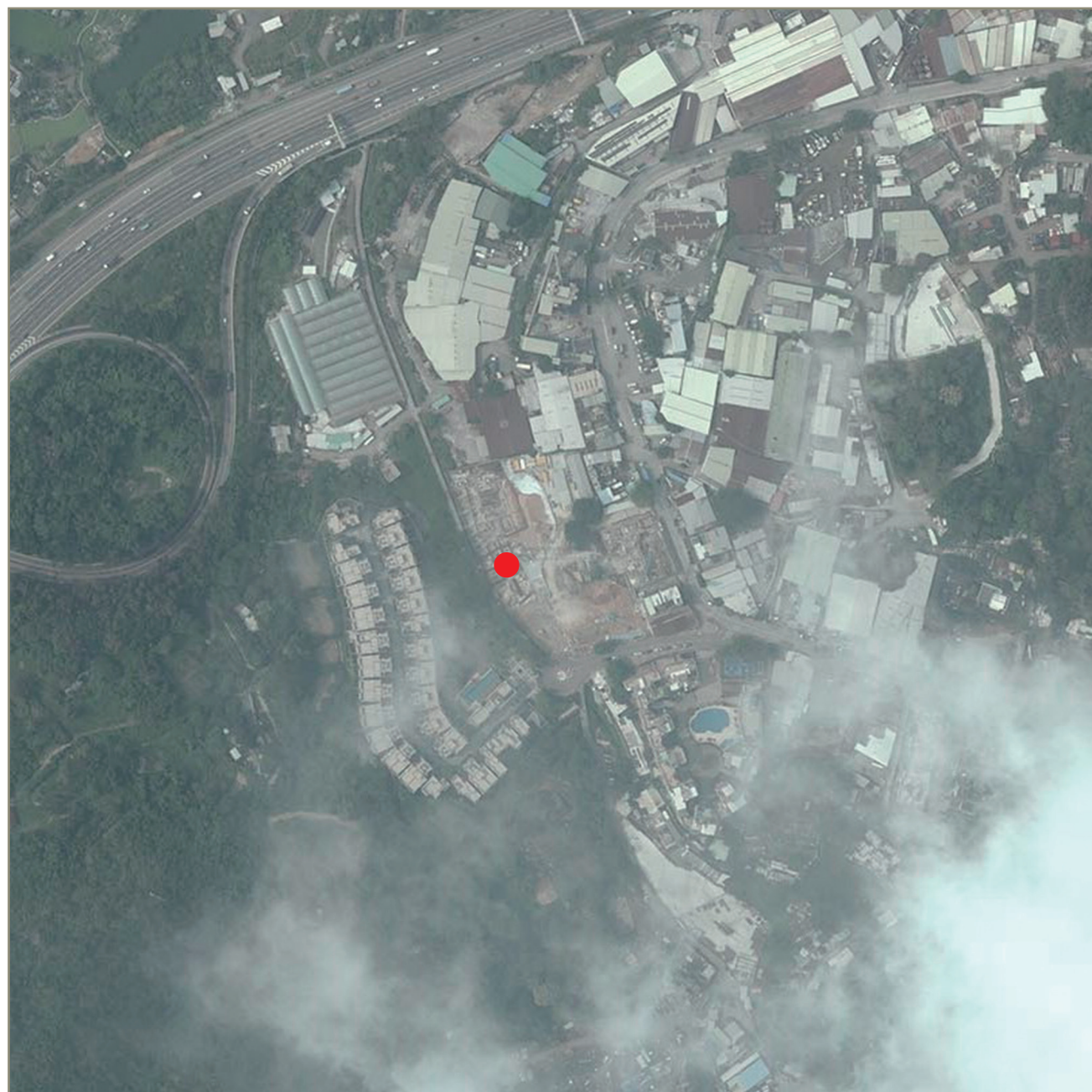
1. 該鳥瞰照片存於售樓處，於正常辦公時間內供免費查閱。
2. 因發展項目期數的不規則界線引致的技術原因，鳥瞰照片所顯示的範圍多於《一手住宅物業銷售條例》所要求。

Aerial photograph of the phase of the development

發展項目期數的鳥瞰照片

Adopted from part of the aerial photograph taken by the Survey and Mapping Office of Lands Department at a flying height of 6,900 feet, photo No. E023550C, dated 29 April 2017.

摘錄自地政總署測繪處於2017年4月29日在6,900呎飛行高度拍攝之鳥瞰照片，編號為E023550C。



● Location of the Phase of the Development
發展項目期數的位置

Survey and Mapping Office, Lands Department, The Government of the HKSAR © Copyright reserved - reproduction by permission only.

香港特別行政區政府地政總署測繪處©版權所有，未經許可，不得複製。

Remarks :

1. The aerial photograph is available for free inspection during normal office hours at the sales office.
2. Due to technical reasons as a result of the irregular boundary of the Phase of the Development, the aerial photograph has shown more than the area required under the Residential Properties (First-hand Sales) Ordinance.

備註：

1. 該鳥瞰照片存於售樓處，於正常辦公時間內供免費查閱。
2. 因發展項目期數的不規則界線引致的技術原因，鳥瞰照片所顯示的範圍多於《一手住宅物業銷售條例》所要求。