

FLOOR PLANS OF RESIDENTIAL PROPERTIES IN THE DEVELOPMENT 發展項目的住宅物業的樓面平面圖

Legend of Terms and Abbreviations used on Floor Plans:

樓面平面圖中所使用名詞及簡稱之圖例：

A/C PLATFORM	= AIR CONDITIONER PLATFORM 空調機平台	M.B.	= MASTER BATHROOM 主人浴室
AIR DUCT FOR STAIRCASE PRESSURIZATION	= 樓梯增壓風管槽	M.B.R.	= MASTER BEDROOM 主人睡房
ARCHITECTURAL FEATURE	= 建築裝飾	METAL CLADDING	= 金屬蓋板
ARCHITECTURAL FEATURE ABOVE	= 建築裝飾置上	M.L. ON __ /F ONLY	= METAL LOUVRE ON __ FLOOR ONLY 金屬百葉只於 __ 樓
B.1	= BATHROOM 1 浴室 1	OPEN KITCHEN	= 開放式廚房
B.2	= BATHROOM 2 浴室 2	P.D.	= PIPE DUCT 管道槽
BAL.	= BALCONY 露台	P.D. ABOVE	= PIPE DUCT ABOVE 管道槽置上
BAL. ABOVE	= BALCONY ABOVE 露台置上	P.D. BELOW	= PIPE DUCT BELOW 管道槽置下
B.R.1	= BEDROOM 1 睡房 1	PLANTER	= 花槽
B.R.2	= BEDROOM 2 睡房 2	PLINTH	= 柱基
B.R.3	= BEDROOM 3 睡房 3	PUMP ROOM FOR POTABLE AND FLUSHING WATER TANK	= 食水及沖廁水泵房
BUILDING LINE ABOVE	= 建築線置上	R.C. CANOPY	= REINFORCED CONCRETE CANOPY 鋼筋混凝土簷篷
COMMON AREA FOR MAINTENANCE	= 供維修用的公用地方	ROOF	= 天台
COMMON FLAT ROOF	= 公用平台	REFUSE ROOM	= 垃圾房
DN	= DOWN 落	STAIRCASE PRESSURIZATION ROOM	= 樓梯增壓房
ELEC. METER CABINET	= ELECTRIC METER CABINET 電錶箱	STORE	= STORE ROOM 儲物房
FLAT ROOF	= 平台	STORE 1	= STORE ROOM 1 儲物房 1
GLASS CANOPY	= 玻璃簷篷	TOP OF CURTAIN WALL	= 幕牆頂部
H.R.	= HOSE REEL 消防喉轆	TOP OF P.D.	= TOP OF PIPE DUCT 管道槽頂部
H.R. AT H.L.	= HOSE REEL AT HIGH LEVEL 消防喉轆在高處	TOP OF VERTICAL GREENERY	= 垂直綠化頂部
JACUZZI	= 按摩池	TOP OF TRANSFER PLATE	= 轉換層頂部
KIT.	= KITCHEN 廚房	UP	= 上
LAV.1	= LAVATORY 1 洗手間 1	U.P.	= UTILITY PLATFORM 工作平台
LAV.2	= LAVATORY 2 洗手間 2	U.P. ABOVE	= UTILITY PLATFORM ABOVE 工作平台置上
LIFT	= 升降機	WATER METER CABINET	= 水錶箱
LIFT LOBBY	= 升降機大堂	YARD	= 庭院
LIFT MACHINE ROOM	= 升降機機房		
LIV./ DIN.	= LIVING ROOM / DINING ROOM 客廳/飯廳		

FLOOR PLANS OF RESIDENTIAL PROPERTIES IN THE DEVELOPMENT 發展項目的住宅物業的樓面平面圖

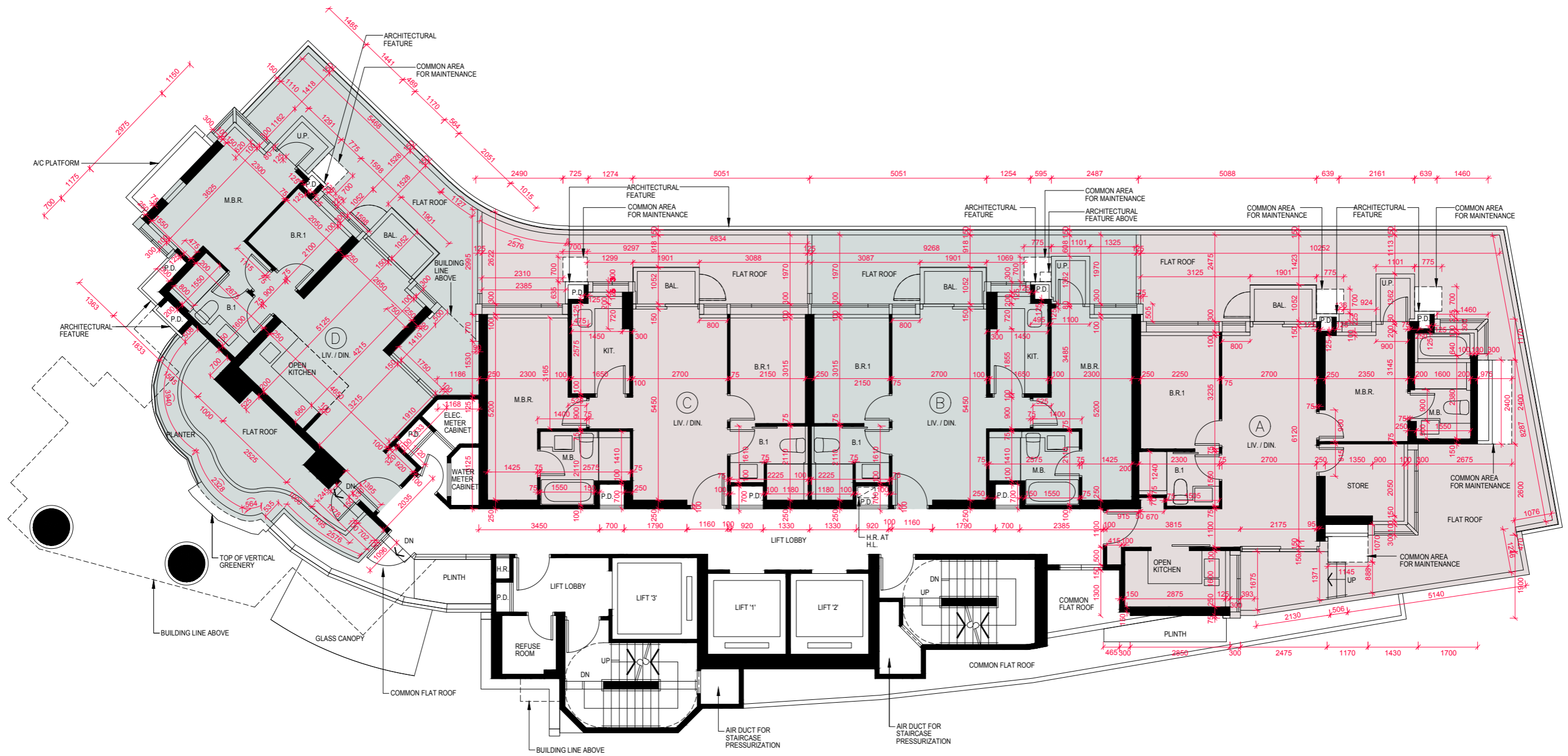
REMARKS:

1. There may be architectural features and/or exposed pipes on external walls of some floors.
2. Common pipes exposed and/or enclosed in cladding are located at/adjacent to Balcony and/or Flat Roof and/or air-conditioning platform and/or external wall of some flats.
3. There are ceiling bulkheads at Living Room / Dining Room, Bedrooms, Store Rooms, Corridors, Kitchen and/or Open Kitchen of some flats for the air-conditioning system and/or Mechanical and Electrical services.
4. The internal ceiling height within some flats may vary due to structural, architectural and/or decoration design variations.
5. Symbols of fittings and fitments shown on the floor plans, such as bathtub, sink, water closet, jacuzzi, shower, sink counter, etc, are retrieved from the latest approved building plans and are for general indication only.
6. Balconies and utility platforms are non-enclosed area.

附註:

1. 部份樓層外牆設有建築裝飾及/或外露喉管。
2. 部份單位的露台及/或平台及/或空調機平台及/或外牆設有外露及/或內藏的公用喉管。
3. 部份單位客廳/飯廳、睡房、儲物房、走廊、廚房及/或開放式廚房之假天花內裝置有空調及/或其他機電設備。
4. 部份單位之天花高度將會因應結構、建築設計及/或裝修設計上的需要而有差異。
5. 樓面平面圖上所顯示的形象裝置符號，例如浴缸、洗滌盆、坐廁、按摩池、花灑、洗滌盆櫃等乃擇自最新的經批准的建築圖則，只作一般性標誌。
6. 露台及工作平台為不可封閉的地方。

1/F FLOOR PLAN
1樓樓面平面圖



FLOOR PLANS OF RESIDENTIAL PROPERTIES IN THE DEVELOPMENT 發展項目的住宅物業的樓面平面圖

Each Residential Property 每個住宅物業	Flat 單位	A	B	C	D
	Floor 樓層				
The thickness of the floor slabs (excluding plaster) of each residential property (mm) 每個住宅物業的樓板(不包括灰泥)的厚度 (毫米)	1/F 1 樓	150	150 175	150 175	150 175
The floor-to-floor height of each residential property (mm) 每個住宅物業的層與層之間的高度 (毫米)	1/F 1 樓	3010 3235 3360	3010 3110 3360	3010 3110 3360	2960 3235 3360

The internal areas of the residential properties on the upper floors will generally be slightly larger than those on the lower floors because of reducing thickness of the structural walls on the upper floors.
因住宅物業的較高樓層的結構牆的厚度遞減，較高樓層的內部面積，一般比較低樓層的內部面積稍大。

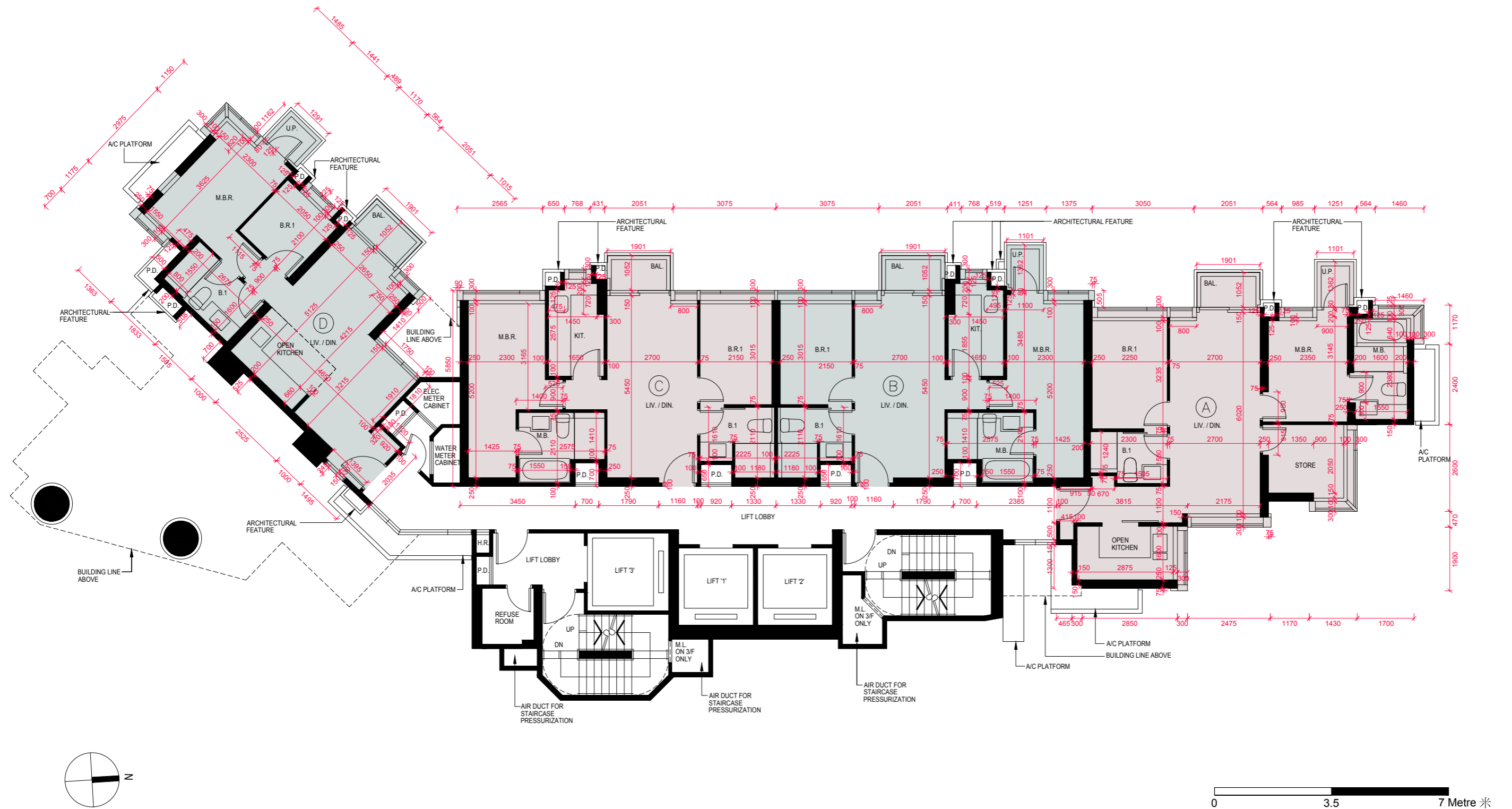
Note 1: Please refer to Pages AL01 to AL02 of this sales brochure for remarks, legend of the terms and abbreviations shown in this floor plan.

註1: 有關樓面平面圖中顯示之附註，名詞及簡稱請參閱本售樓說明書第AL01至AL02頁。

Note 2: The dimensions of floor plans are all structural dimensions in millimeter.

註2: 樓面平面圖之尺規所列之數字為以毫米標示之建築結構尺寸。

2/F - 3/F FLOOR PLAN
2樓至3樓樓面平面圖



FLOOR PLANS OF RESIDENTIAL PROPERTIES IN THE DEVELOPMENT 發展項目的住宅物業的樓面平面圖

Each Residential Property 每個住宅物業	Flat 單位	A	B	C	D
	Floor 樓層				
The thickness of the floor slabs (excluding plaster) of each residential property (mm) 每個住宅物業的樓板(不包括灰泥)的厚度 (毫米)	2/F – 3/F 2 樓至 3 樓	150	150 175	150 175	150 175
The floor-to-floor height of each residential property (mm) 每個住宅物業的層與層之間的高度 (毫米)	2/F – 3/F 2 樓至 3 樓	3010 3235 3360	3010 3110 3360	3010 3110 3360	2960 3235 3360

The internal areas of the residential properties on the upper floors will generally be slightly larger than those on the lower floors because of reducing thickness of the structural walls on the upper floors.
因住宅物業的較高樓層的結構牆的厚度遞減，較高樓層的内部面積，一般比較低樓層的内部面積稍大。

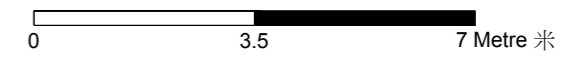
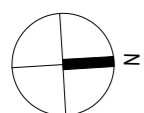
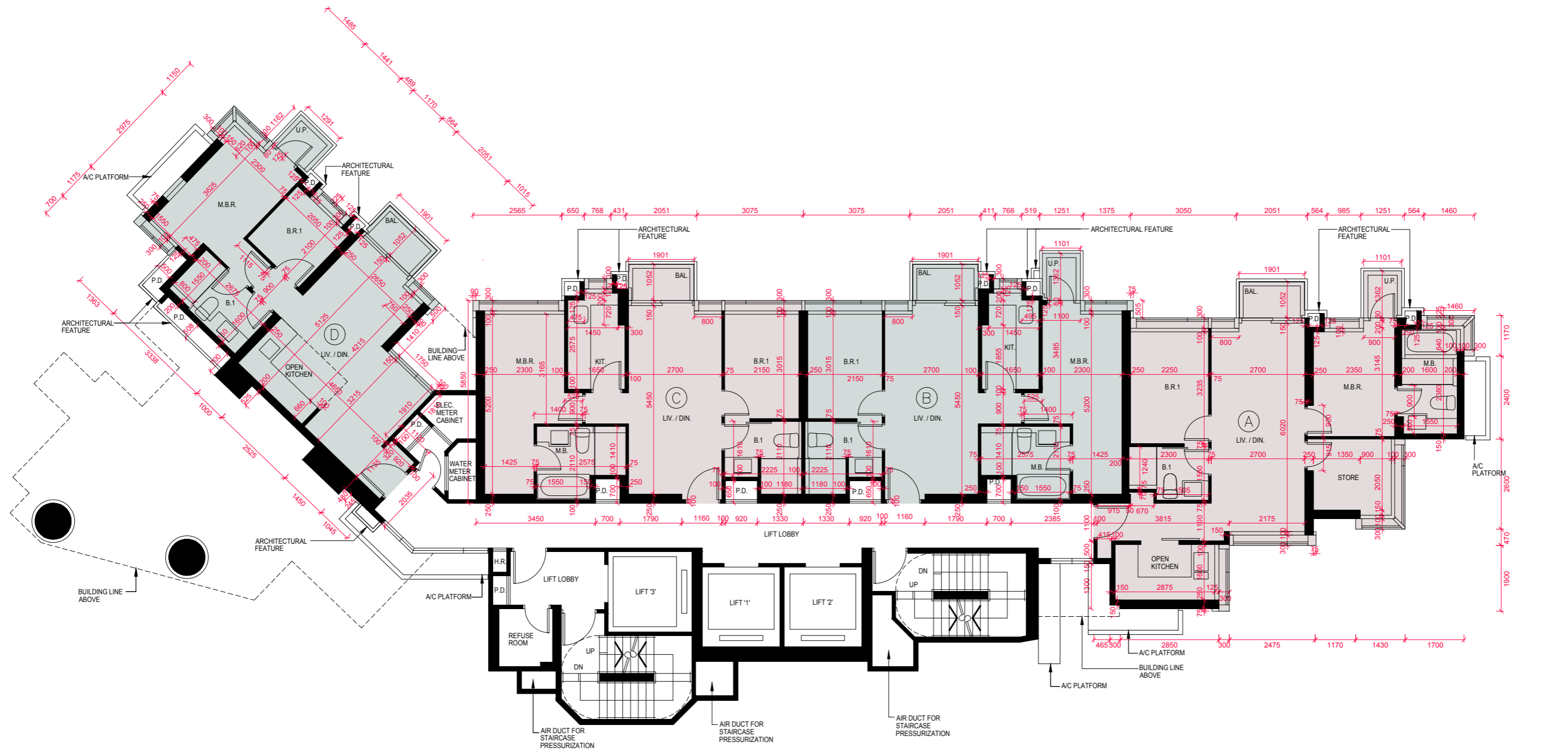
Note 1: Please refer to Pages AL01 to AL02 of this sales brochure for remarks, legend of the terms and abbreviations shown in this floor plan.

註1: 有關樓面平面圖中顯示之附註，名詞及簡稱請參閱本售樓說明書第AL01至AL02頁。

Note 2: The dimensions of floor plans are all structural dimensions in millimeter.

註2: 樓面平面圖之尺規所列之數字為以毫米標示之建築結構尺寸。

5/F FLOOR PLAN
5樓樓面平面圖



FLOOR PLANS OF RESIDENTIAL PROPERTIES IN THE DEVELOPMENT 發展項目的住宅物業的樓面平面圖

Each Residential Property 每個住宅物業	Flat 單位	A	B	C	D
	Floor 樓層				
The thickness of the floor slabs (excluding plaster) of each residential property (mm) 每個住宅物業的樓板(不包括灰泥)的厚度 (毫米)	5/F 5樓	150	150 175	150 175	150 175
The floor-to-floor height of each residential property (mm) 每個住宅物業的層與層之間的高度 (毫米)	5/F 5樓	3010 3235 3360	3010 3110 3360	3010 3110 3360	2960 3235 3360

The internal areas of the residential properties on the upper floors will generally be slightly larger than those on the lower floors because of reducing thickness of the structural walls on the upper floors.
因住宅物業的較高樓層的結構牆的厚度遞減，較高樓層的內部面積，一般比較低樓層的內部面積稍大。

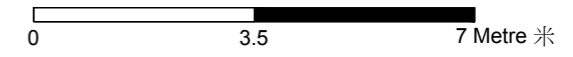
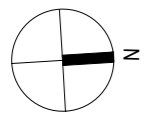
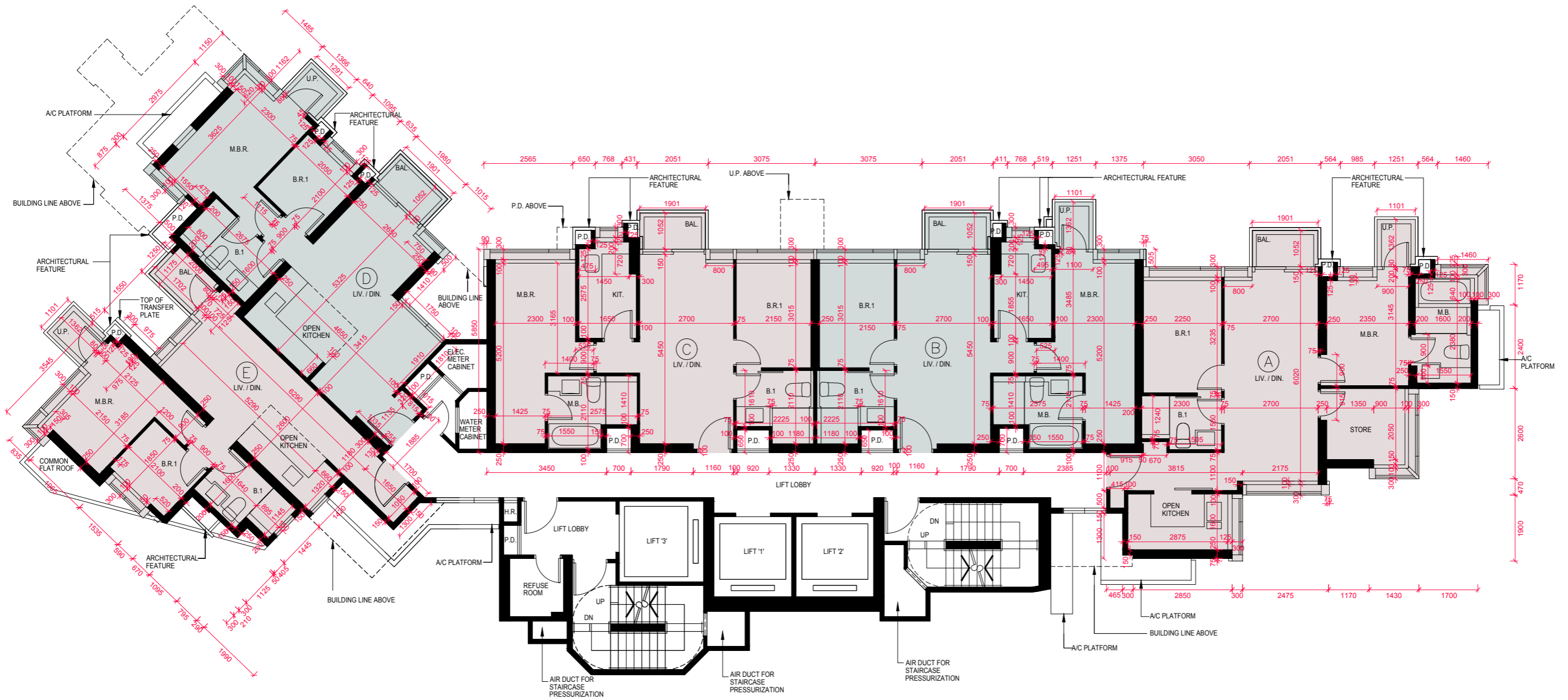
Note 1: Please refer to Pages AL01 to AL02 of this sales brochure for remarks, legend of the terms and abbreviations shown in this floor plan.

註1: 有關樓面平面圖中顯示之附註，名詞及簡稱請參閱本售樓說明書第AL01至AL02頁。

Note 2: The dimensions of floor plans are all structural dimensions in millimeter.

註2: 樓面平面圖之尺規所列之數字為以毫米標示之建築結構尺寸。

6/F FLOOR PLAN
6樓樓面平面圖



FLOOR PLANS OF RESIDENTIAL PROPERTIES IN THE DEVELOPMENT 發展項目的住宅物業的樓面平面圖

Each Residential Property 每個住宅物業	Flat 單位	A	B	C	D	E
	Floor 樓層					
The thickness of the floor slabs (excluding plaster) of each residential property (mm) 每個住宅物業的樓板(不包括灰泥)的厚度 (毫米)	6/F 6 樓	150	150 175	150 175	150 175	150
The floor-to-floor height of each residential property (mm) 每個住宅物業的層與層之間的高度 (毫米)	6/F 6 樓	3010 3235 3360	3010 3110 3360	3010 3110 3360	2960 3235 3360	2960 3235 3360

The internal areas of the residential properties on the upper floors will generally be slightly larger than those on the lower floors because of reducing thickness of the structural walls on the upper floors.
因住宅物業的較高樓層的結構牆的厚度遞減，較高樓層的內部面積，一般比較低樓層的內部面積稍大。

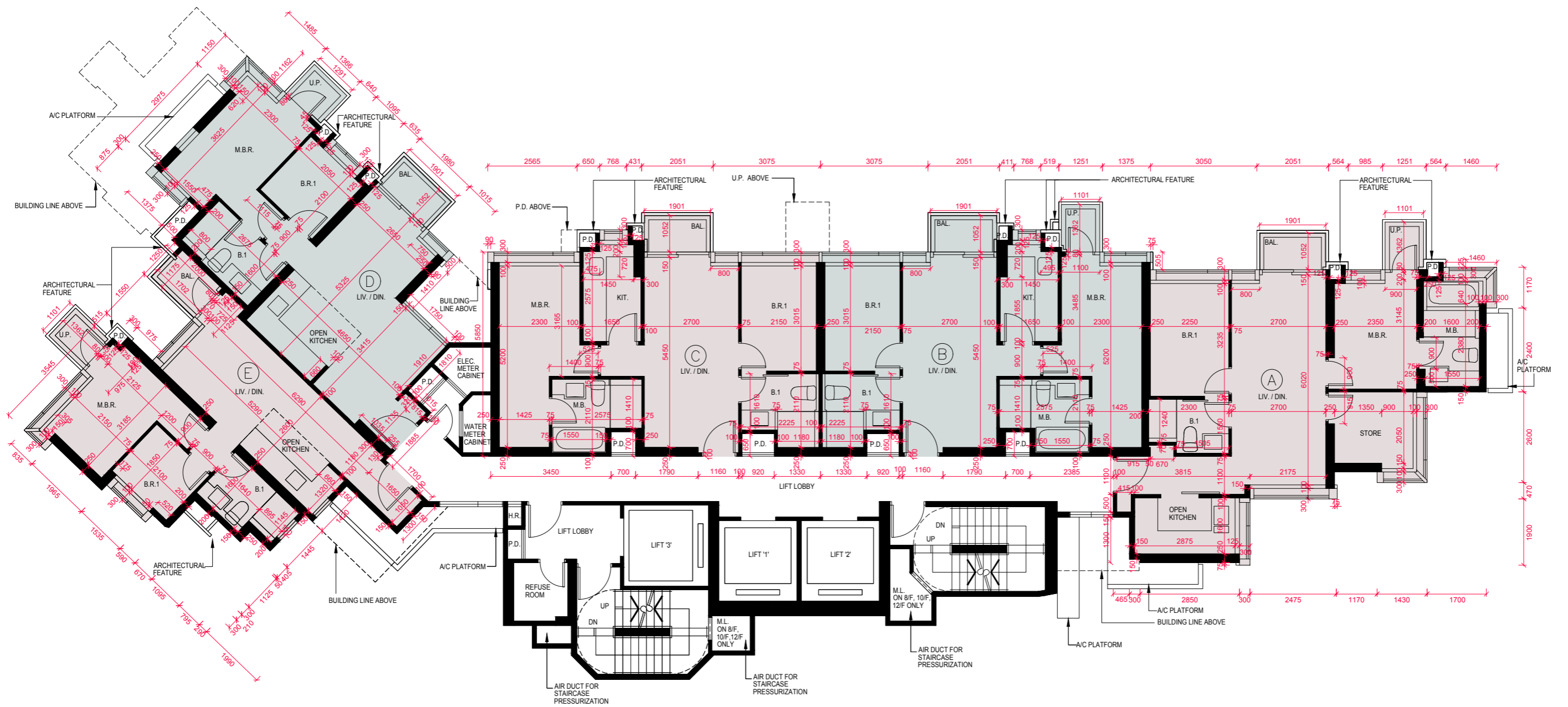
Note 1: Please refer to Pages AL01 to AL02 of this sales brochure for remarks, legend of the terms and abbreviations shown in this floor plan.

註1: 有關樓面平面圖中顯示之附註，名詞及簡稱請參閱本售樓說明書第AL01至AL02頁。

Note 2: The dimensions of floor plans are all structural dimensions in millimeter.

註2: 樓面平面圖之尺規所列之數字為以毫米標示之建築結構尺寸。

7/F - 12/F FLOOR PLAN
7樓至12樓樓面平面圖



0 3.5 7 Metre 米

FLOOR PLANS OF RESIDENTIAL PROPERTIES IN THE DEVELOPMENT 發展項目的住宅物業的樓面平面圖

Each Residential Property 每個住宅物業	Flat 單位	A	B	C	D	E
	Floor 樓層					
The thickness of the floor slabs (excluding plaster) of each residential property (mm) 每個住宅物業的樓板(不包括灰泥)的厚度 (毫米)	7/F – 12/F 7 樓至 12 樓	150	150 175	150 175	150 175	150
The floor-to-floor height of each residential property (mm) 每個住宅物業的層與層之間的高度 (毫米)	7/F – 12/F 7 樓至 12 樓	3010 3235 3360	3010 3110 3360	3010 3110 3360	2960 3235 3360	2960 3235 3360

The internal areas of the residential properties on the upper floors will generally be slightly larger than those on the lower floors because of reducing thickness of the structural walls on the upper floors.
因住宅物業的較高樓層的結構牆的厚度遞減，較高樓層的內部面積，一般比較低樓層的內部面積稍大。

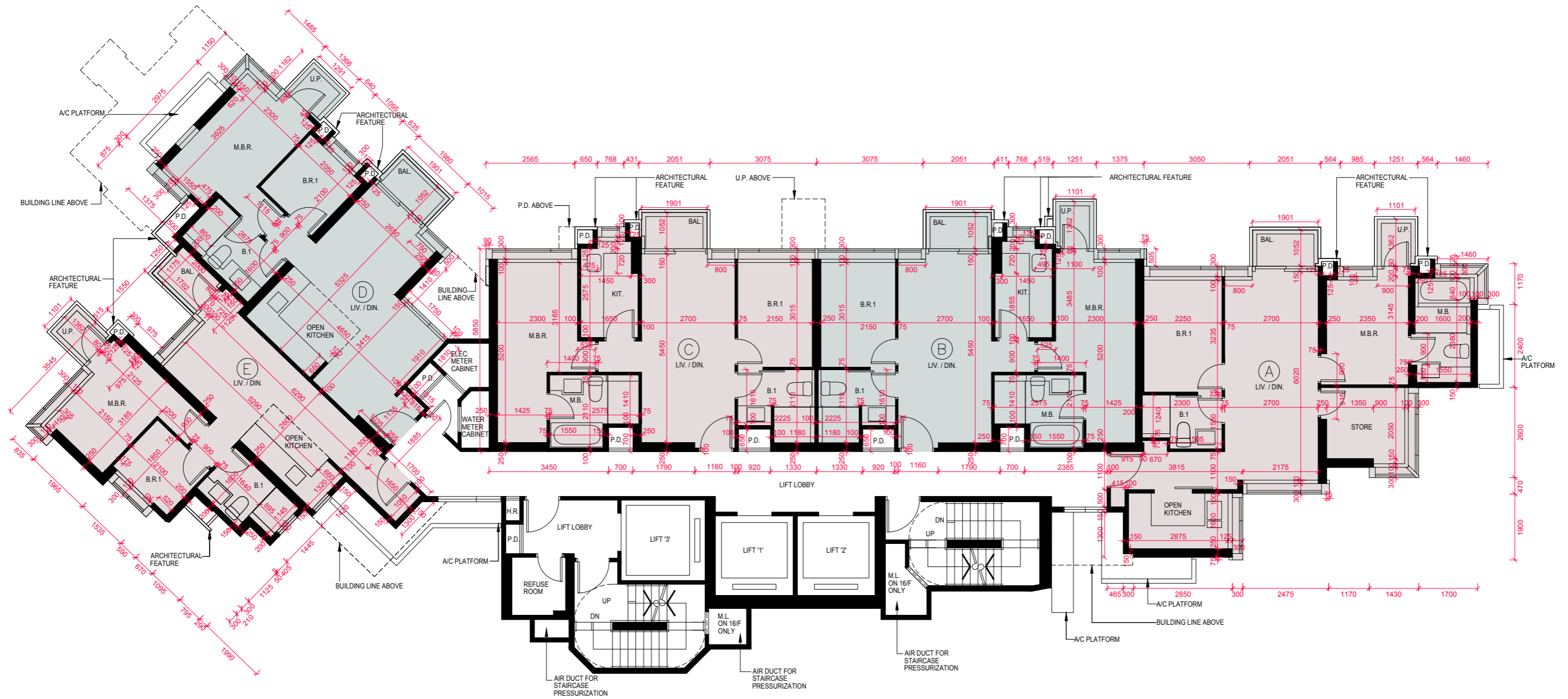
Note 1: Please refer to Pages AL01 to AL02 of this sales brochure for remarks, legend of the terms and abbreviations shown in this floor plan.

註1: 有關樓面平面圖中顯示之附註，名詞及簡稱請參閱本售樓說明書第AL01至AL02頁。

Note 2: The dimensions of floor plans are all structural dimensions in millimeter.

註2: 樓面平面圖之尺規所列之數字為以毫米標示之建築結構尺寸。

15/F - 16/F FLOOR PLAN
15樓至16樓樓面平面圖



FLOOR PLANS OF RESIDENTIAL PROPERTIES IN THE DEVELOPMENT 發展項目的住宅物業的樓面平面圖

Each Residential Property 每個住宅物業	Flat 單位	A	B	C	D	E
	Floor 樓層					
The thickness of the floor slabs (excluding plaster) of each residential property (mm) 每個住宅物業的樓板(不包括灰泥)的厚度 (毫米)	15/F 15 樓	150	150 175	150 175	150 175	150
	16/F 16 樓	1500*	1500*	1500*	1500*	1500*
The floor-to-floor height of each residential property (mm) 每個住宅物業的層與層之間的高度 (毫米)	15/F 15 樓	3010 3235 3360	3010 3110 3360	3010 3110 3360	2960 3235 3360	2960 3235 3360
	16/F 16 樓	4510 4735 4860	4510 4735 4860	4460 4510 4735 4860	4460 4510 4735 4860	4510 4735 4860

The internal areas of the residential properties on the upper floors will generally be slightly larger than those on the lower floors because of reducing thickness of the structural walls on the upper floors.
因住宅物業的較高樓層的結構牆的厚度遞減，較高樓層的內部面積，一般比較低樓層的內部面積稍大。

Note 1: Please refer to Pages AL01 to AL02 of this sales brochure for remarks, legend of the terms and abbreviations shown in this floor plan.

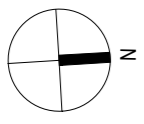
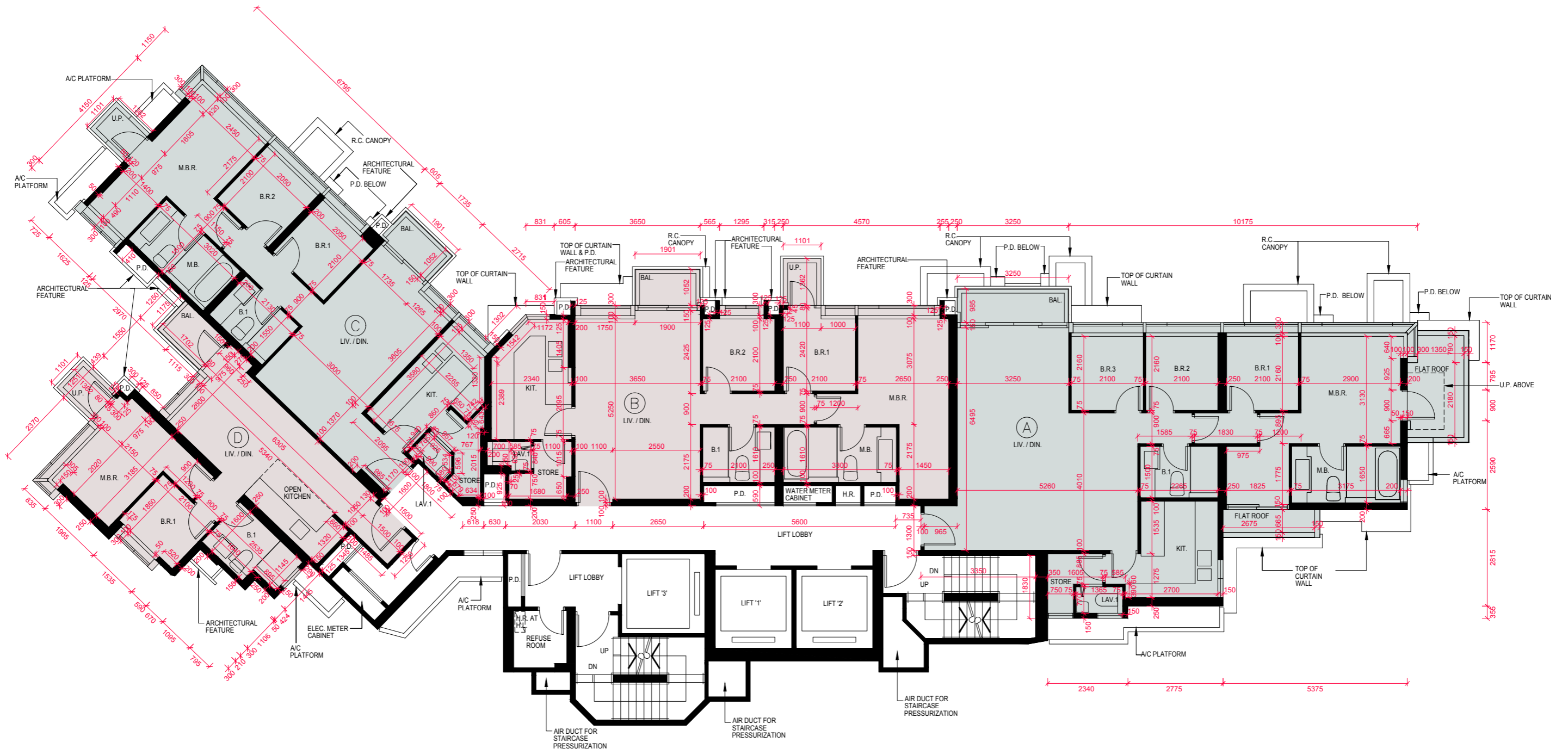
註1: 有關樓面平面圖中顯示之附註，名詞及簡稱請參閱本售樓說明書第AL01至AL02頁。

Note 2: The dimensions of floor plans are all structural dimensions in millimeter.

註2: 樓面平面圖之尺規所列之數字為以毫米標示之建築結構尺寸。

* Inclusive of the 1000mm thick transfer plate with a layer of 500mm thick mass concrete fill on top
包括1000毫米厚的轉換層及其上面的500毫米厚的混凝土填充層

17/F FLOOR PLAN
17樓樓面平面圖



FLOOR PLANS OF RESIDENTIAL PROPERTIES IN THE DEVELOPMENT 發展項目的住宅物業的樓面平面圖

Each Residential Property 每個住宅物業	Flat 單位	A	B	C	D
	Floor 樓層				
The thickness of the floor slabs (excluding plaster) of each residential property (mm) 每個住宅物業的樓板(不包括灰泥)的厚度 (毫米)	17/F 17 樓	150 200	150 175 200	150 175 200 225	150
The floor-to-floor height of each residential property (mm) 每個住宅物業的層與層之間的高度 (毫米)	17/F 17 樓	3150 3375 3500	3100 3150 3375 3500	3100 3150 3375 3500	3150 3375 3500

The internal areas of the residential properties on the upper floors will generally be slightly larger than those on the lower floors because of reducing thickness of the structural walls on the upper floors.
因住宅物業的較高樓層的結構牆的厚度遞減，較高樓層的內部面積，一般比較低樓層的內部面積稍大。

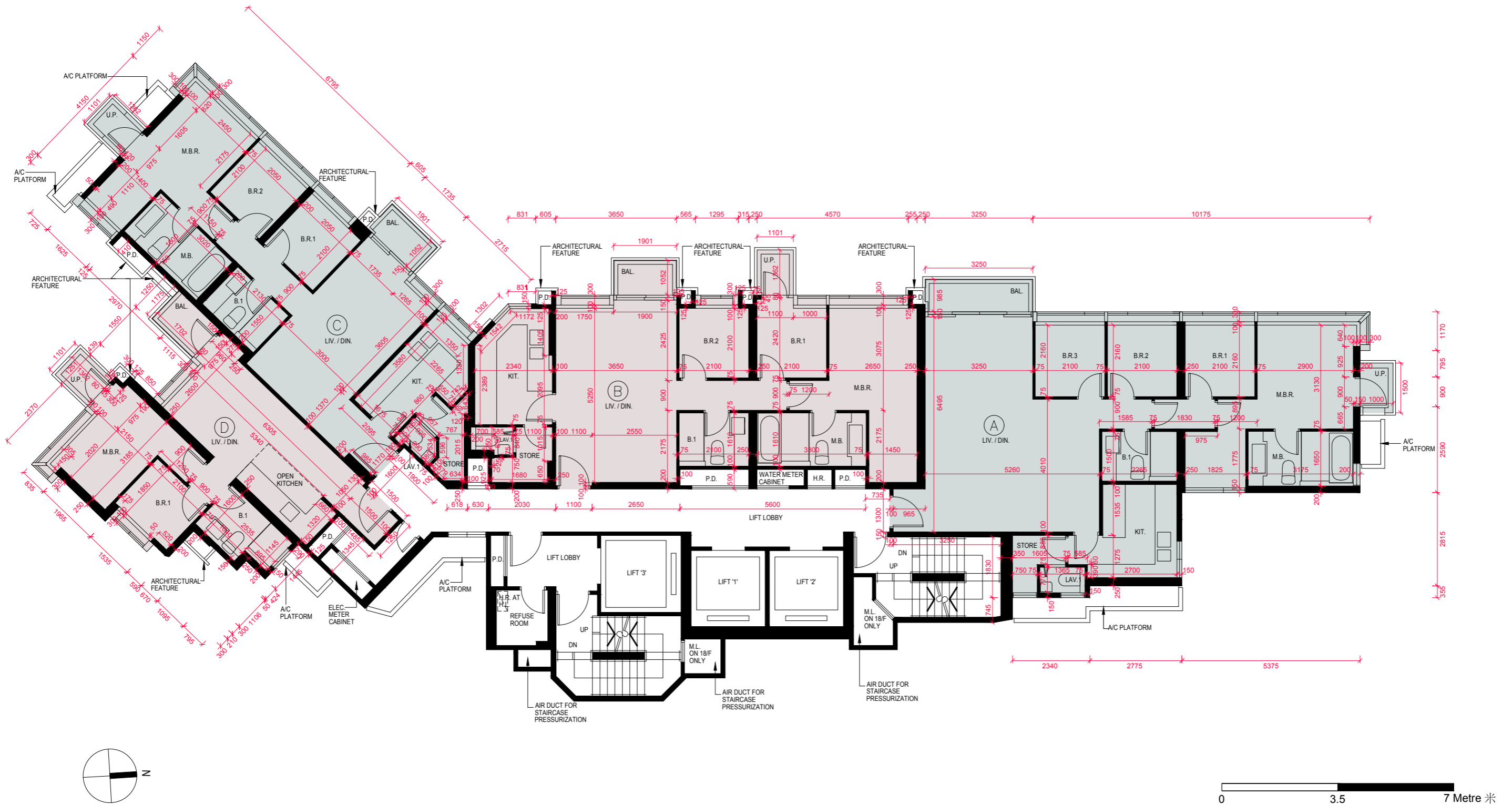
Note 1: Please refer to Pages AL01 to AL02 of this sales brochure for remarks, legend of the terms and abbreviations shown in this floor plan.

註1: 有關樓面平面圖中顯示之附註，名詞及簡稱請參閱本售樓說明書第AL01至AL02頁。

Note 2: The dimensions of floor plans are all structural dimensions in millimeter.

註2: 樓面平面圖之尺規所列之數字為以毫米標示之建築結構尺寸。

18/F - 19/F FLOOR PLAN
18樓至19樓樓面平面圖



FLOOR PLANS OF RESIDENTIAL PROPERTIES IN THE DEVELOPMENT 發展項目的住宅物業的樓面平面圖

Each Residential Property 每個住宅物業	Flat 單位	A	B	C	D
	Floor 樓層				
The thickness of the floor slabs (excluding plaster) of each residential property (mm) 每個住宅物業的樓板(不包括灰泥)的厚度 (毫米)	18/F 18 樓	150 200	150 175 200	150 175 200 225	150
	19/F 19 樓	150 200	150 175 200	150 175 200 225	150 200
The floor-to-floor height of each residential property (mm) 每個住宅物業的層與層之間的高度 (毫米)	18/F 18 樓	3150 3375 3500	3100 3150 3375 3500	3100 3150 3375 3500	3150 3375 3500
	19/F 19 樓	3150 3375 3500	3100 3150 3375 3500	3100 3150 3375 3500	3150 3200 3500

The internal areas of the residential properties on the upper floors will generally be slightly larger than those on the lower floors because of reducing thickness of the structural walls on the upper floors.
因住宅物業的較高樓層的結構牆的厚度遞減，較高樓層的內部面積，一般比較低樓層的內部面積稍大。

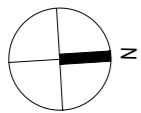
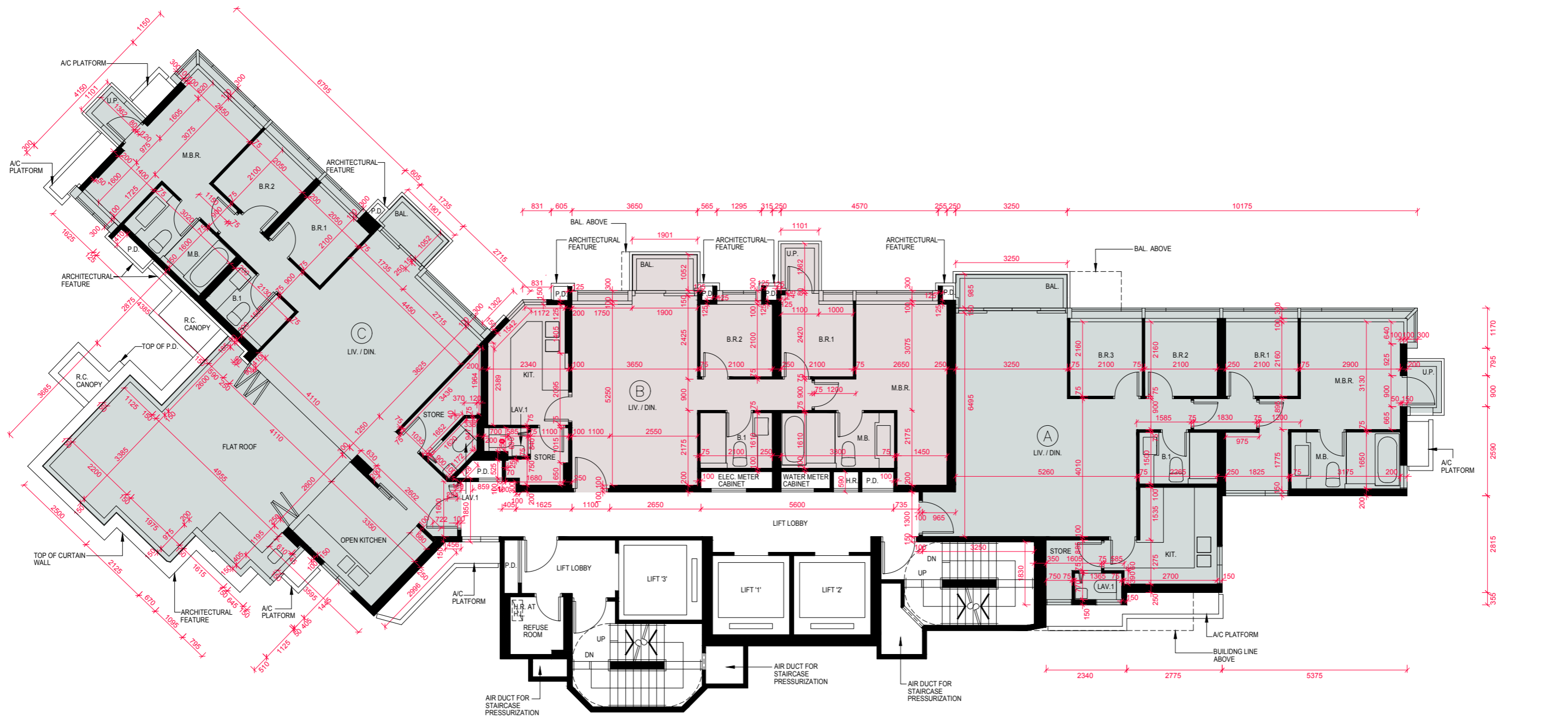
Note 1: Please refer to Pages AL01 to AL02 of this sales brochure for remarks, legend of the terms and abbreviations shown in this floor plan.

註1: 有關樓面平面圖中顯示之附註，名詞及簡稱請參閱本售樓說明書第AL01至AL02頁。

Note 2: The dimensions of floor plans are all structural dimensions in millimeter.

註2: 樓面平面圖之尺規所列之數字為以毫米標示之建築結構尺寸。

20/F FLOOR PLAN
20樓樓面平面圖



FLOOR PLANS OF RESIDENTIAL PROPERTIES IN THE DEVELOPMENT 發展項目的住宅物業的樓面平面圖

Each Residential Property 每個住宅物業	Flat 單位	A	B	C
	Floor 樓層			
The thickness of the floor slabs (excluding plaster) of each residential property (mm) 每個住宅物業的樓板(不包括灰泥)的厚度 (毫米)	20/F	150	150	150
	20 樓	200	200	200
		225	225	225
The floor-to-floor height of each residential property (mm) 每個住宅物業的層與層之間的高度 (毫米)	20/F	3150	3150	3150
	20 樓	3250	3250	3200
		3350	3350	3200
		3375	3375	3500
		3500	3500	3500

The internal areas of the residential properties on the upper floors will generally be slightly larger than those on the lower floors because of reducing thickness of the structural walls on the upper floors.
因住宅物業的較高樓層的結構牆的厚度遞減，較高樓層的內部面積，一般比較低樓層的內部面積稍大。

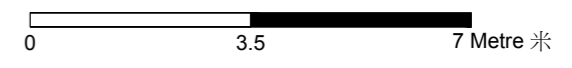
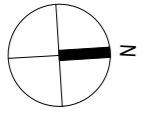
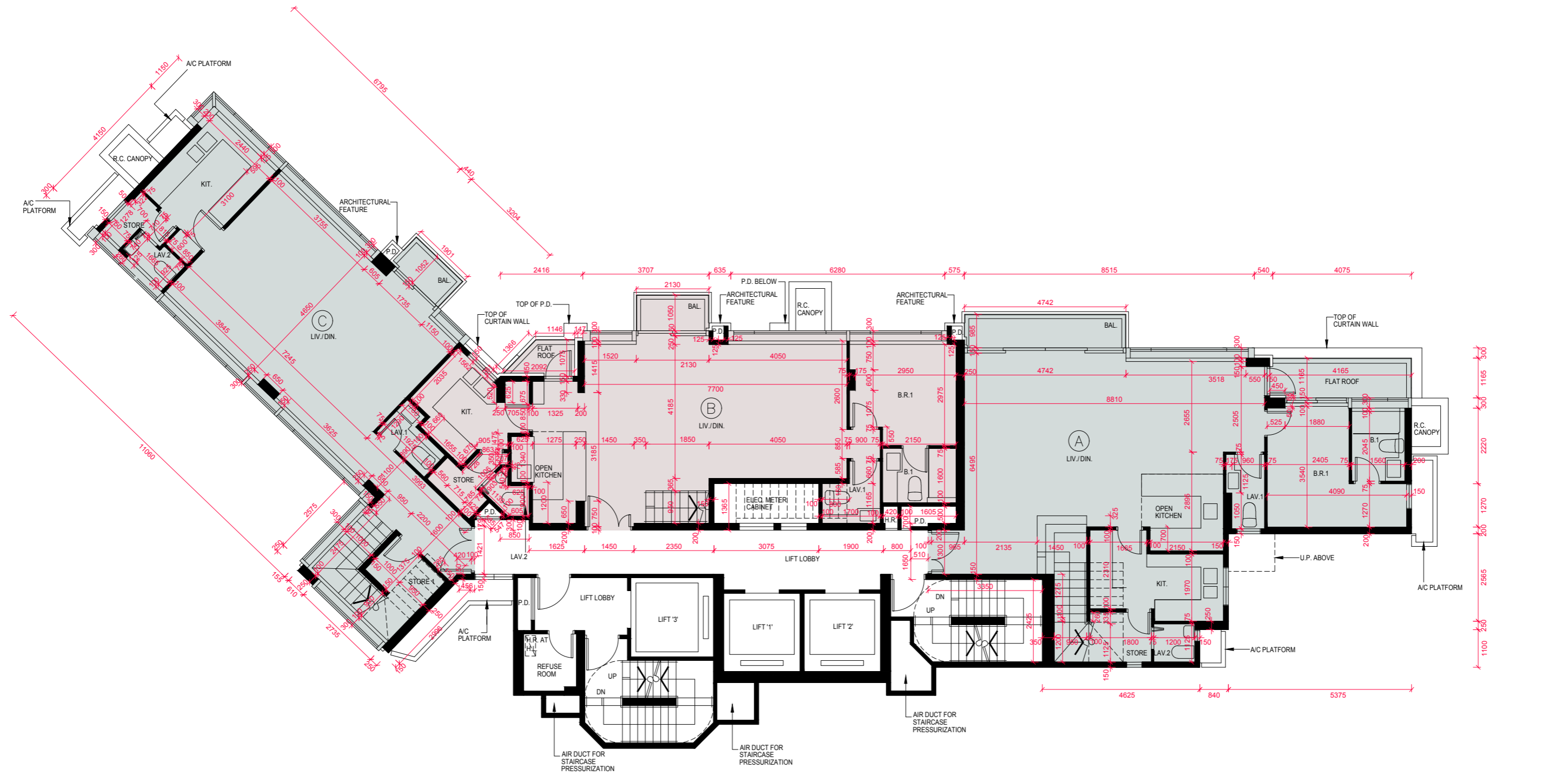
Note 1: Please refer to Pages AL01 to AL02 of this sales brochure for remarks, legend of the terms and abbreviations shown in this floor plan.

註1: 有關樓面平面圖中顯示之附註，名詞及簡稱請參閱本售樓說明書第AL01至AL02頁。

Note 2: The dimensions of floor plans are all structural dimensions in millimeter.

註2: 樓面平面圖之尺規所列之數字為以毫米標示之建築結構尺寸。

21/F PENTHOUSE FLOOR PLAN
21樓頂層樓面平面圖



FLOOR PLANS OF RESIDENTIAL PROPERTIES IN THE DEVELOPMENT 發展項目的住宅物業的樓面平面圖

Each Residential Property 每個住宅物業	Flat 單位	A	B	C
	Floor 樓層			
The thickness of the floor slabs (excluding plaster) of each residential property (mm) 每個住宅物業的樓板(不包括灰泥)的厚度 (毫米)	21/F Penthouse	150	150	150
	21 樓頂層	225	175 200 225	225
The floor-to-floor height of each residential property (mm) 每個住宅物業的層與層之間的高度 (毫米)	21/F Penthouse	3150	3150	3150
	21 樓頂層	3350	3350	3350
		3375 3500	3375 3500	3375 3500

The internal areas of the residential properties on the upper floors will generally be slightly larger than those on the lower floors because of reducing thickness of the structural walls on the upper floors.
因住宅物業的較高樓層的結構牆的厚度遞減，較高樓層的內部面積，一般比較低樓層的內部面積稍大。

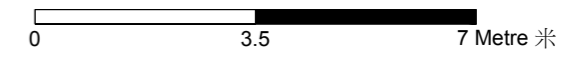
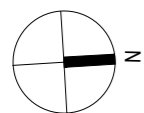
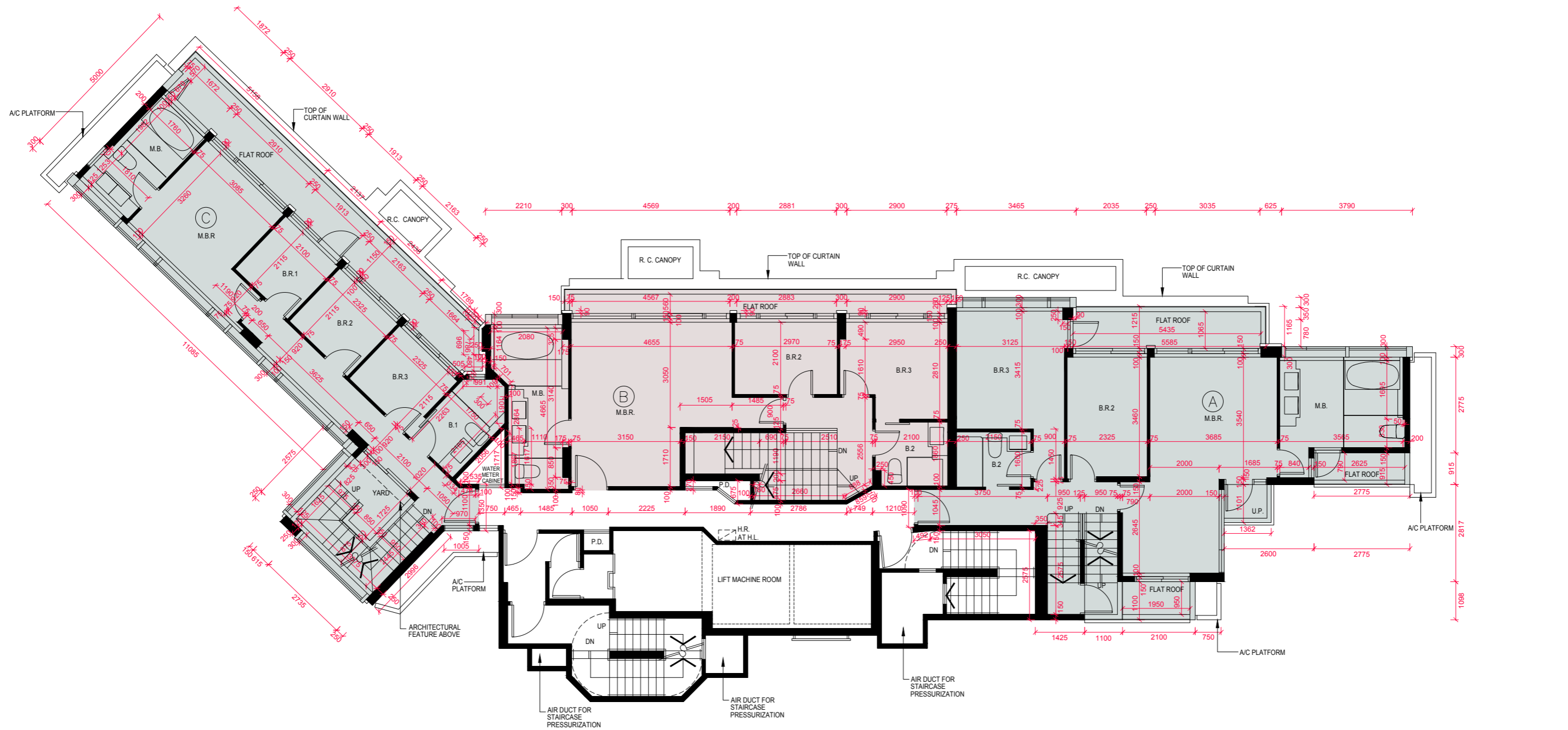
Note 1: Please refer to Pages AL01 to AL02 of this sales brochure for remarks, legend of the terms and abbreviations shown in this floor plan.

註1: 有關樓面平面圖中顯示之附註，名詞及簡稱請參閱本售樓說明書第AL01至AL02頁。

Note 2: The dimensions of floor plans are all structural dimensions in millimeter.

註2: 樓面平面圖之尺規所列之數字為以毫米標示之建築結構尺寸。

22/F PENTHOUSE FLOOR PLAN
22樓頂層樓面平面圖



FLOOR PLANS OF RESIDENTIAL PROPERTIES IN THE DEVELOPMENT 發展項目的住宅物業的樓面平面圖

Each Residential Property 每個住宅物業	Flat 單位	A	B	C
	Floor 樓層			
The thickness of the floor slabs (excluding plaster) of each residential property (mm) 每個住宅物業的樓板(不包括灰泥)的厚度 (毫米)	22/F Penthouse	150	150	150
	22 樓頂層	175		175
The floor-to-floor height of each residential property (mm) 每個住宅物業的層與層之間的高度 (毫米)	22/F Penthouse	3500	3500	3500
	22 樓頂層			

The internal areas of the residential properties on the upper floors will generally be slightly larger than those on the lower floors because of reducing thickness of the structural walls on the upper floors.
因住宅物業的較高樓層的結構牆的厚度遞減，較高樓層的內部面積，一般比較低樓層的內部面積稍大。

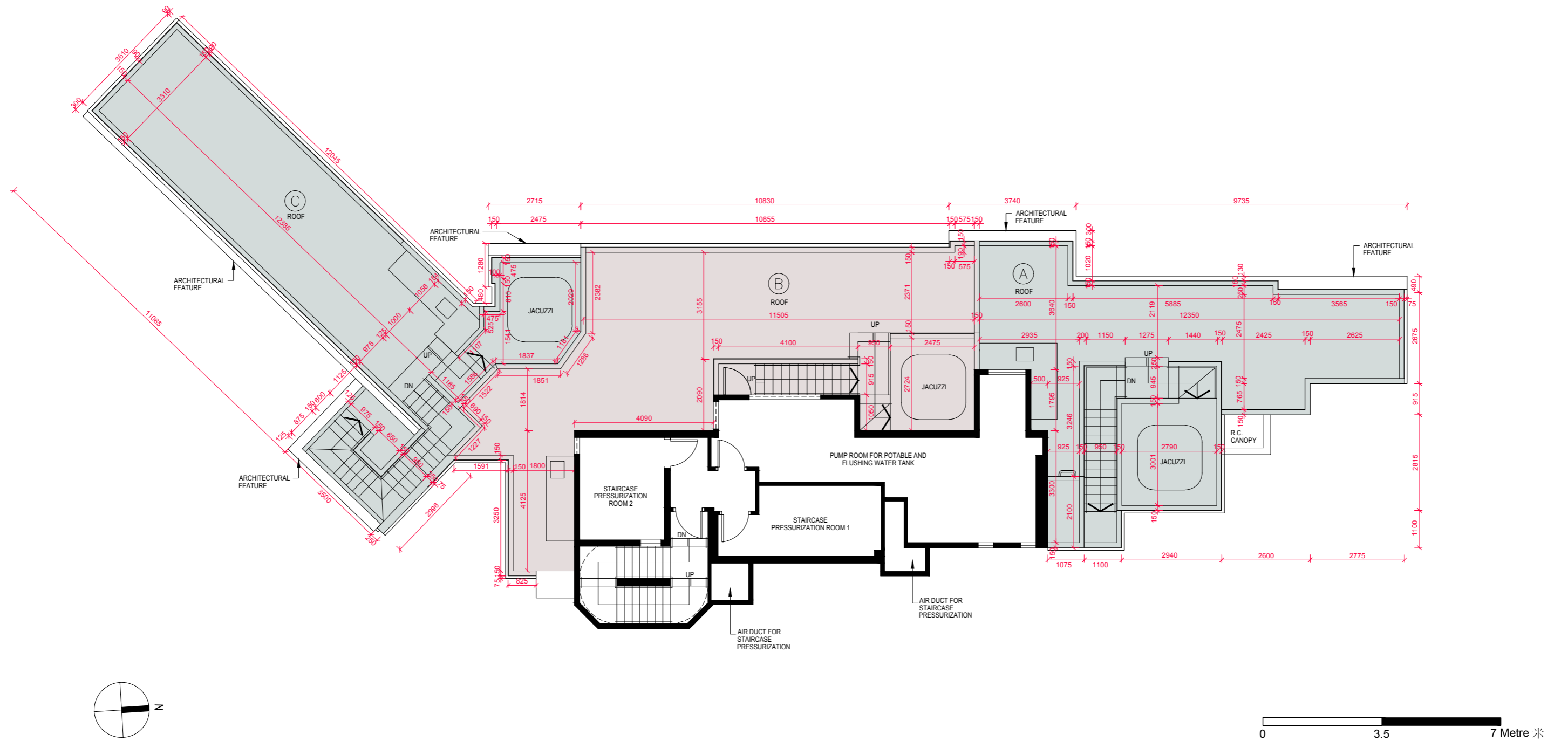
Note 1: Please refer to Pages AL01 to AL02 of this sales brochure for remarks, legend of the terms and abbreviations shown in this floor plan.

註1: 有關樓面平面圖中顯示之附註，名詞及簡稱請參閱本售樓說明書第AL01至AL02頁。

Note 2: The dimensions of floor plans are all structural dimensions in millimeter.

註2: 樓面平面圖之尺規所列之數字為以毫米標示之建築結構尺寸。

ROOF FLOOR PLAN
天台樓面平面圖



FLOOR PLANS OF RESIDENTIAL PROPERTIES IN THE DEVELOPMENT 發展項目的住宅物業的樓面平面圖

Each Residential Property 每個住宅物業	Flat 單位	A	B	C
	Floor 樓層			
The thickness of the floor slabs (excluding plaster) of each residential property (mm) 每個住宅物業的樓板(不包括灰泥)的厚度 (毫米)	Roof 天台	N/A 不適用	N/A 不適用	N/A 不適用
The floor-to-floor height of each residential property (mm) 每個住宅物業的層與層之間的高度 (毫米)	Roof 天台	N/A 不適用	N/A 不適用	N/A 不適用

The internal areas of the residential properties on the upper floors will generally be slightly larger than those on the lower floors because of reducing thickness of the structural walls on the upper floors.
因住宅物業的較高樓層的結構牆的厚度遞減，較高樓層的內部面積，一般比較低樓層的內部面積稍大。

Note 1: Please refer to Pages AL01 to AL02 of this sales brochure for remarks, legend of the terms and abbreviations shown in this floor plan.

註1: 有關樓面平面圖中顯示之附註，名詞及簡稱請參閱本售樓說明書第AL01至AL02頁。

Note 2: The dimensions of floor plans are all structural dimensions in millimeter.

註2: 樓面平面圖之尺規所列之數字為以毫米標示之建築結構尺寸。