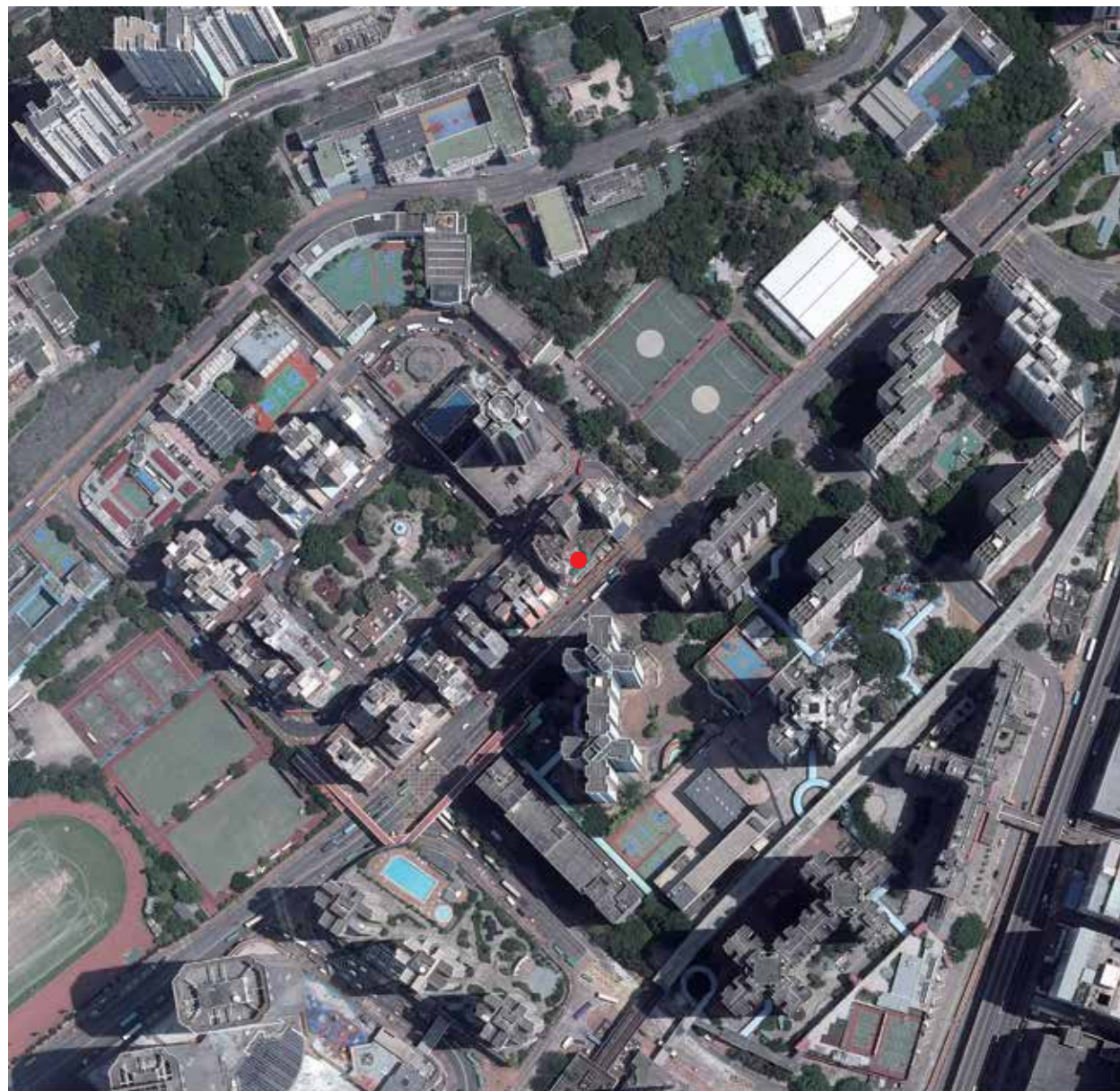


# AERIAL PHOTOGRAPH OF THE DEVELOPMENT

## 發展項目的鳥瞰照片



● Location of the Development  
發展項目的位置

Adapted from part of the aerial photograph taken by the Survey and Mapping Office of Lands Department at a flying height of 6900 feet, Photo No. E027269C dated 29<sup>th</sup> May 2017.

Survey and Mapping Office, Lands Department, The Government of HKSAR © Copyright reserved reproduction by permission only.

摘錄自地政總署測繪處在6900呎的飛行高度拍攝之鳥瞰照片，照片編號E027269C，日期為2017年5月29日。

香港特別行政區政府地政總署測繪處©版權所有，未經許可，不得複製。

### NOTES:

1. The copy of the aerial photograph of the Development is available for free inspection at the sales office during opening hours.
2. The Vendor advises prospective purchasers to conduct an on-site visit for a better understanding of the Development site, its surrounding environment and the public facilities nearby.
3. The aerial photograph may show more than the area required under the Residential Properties (First-hand Sales) Ordinance due to the technical reason that the boundary of the Development is irregular.

### 備註：

1. 發展項目的鳥瞰照片之副本可於售樓處開放時間內免費查閱。
2. 賣方建議準買家到該發展地盤作實地考察，以對該發展地盤、其周邊地區環境及附近的公共設施有較佳了解。
3. 由於發展項目的邊界不規則的技術原因，此鳥瞰照片所顯示的範圍可能超過《一手住宅物業銷售條例》所規定的範圍。