

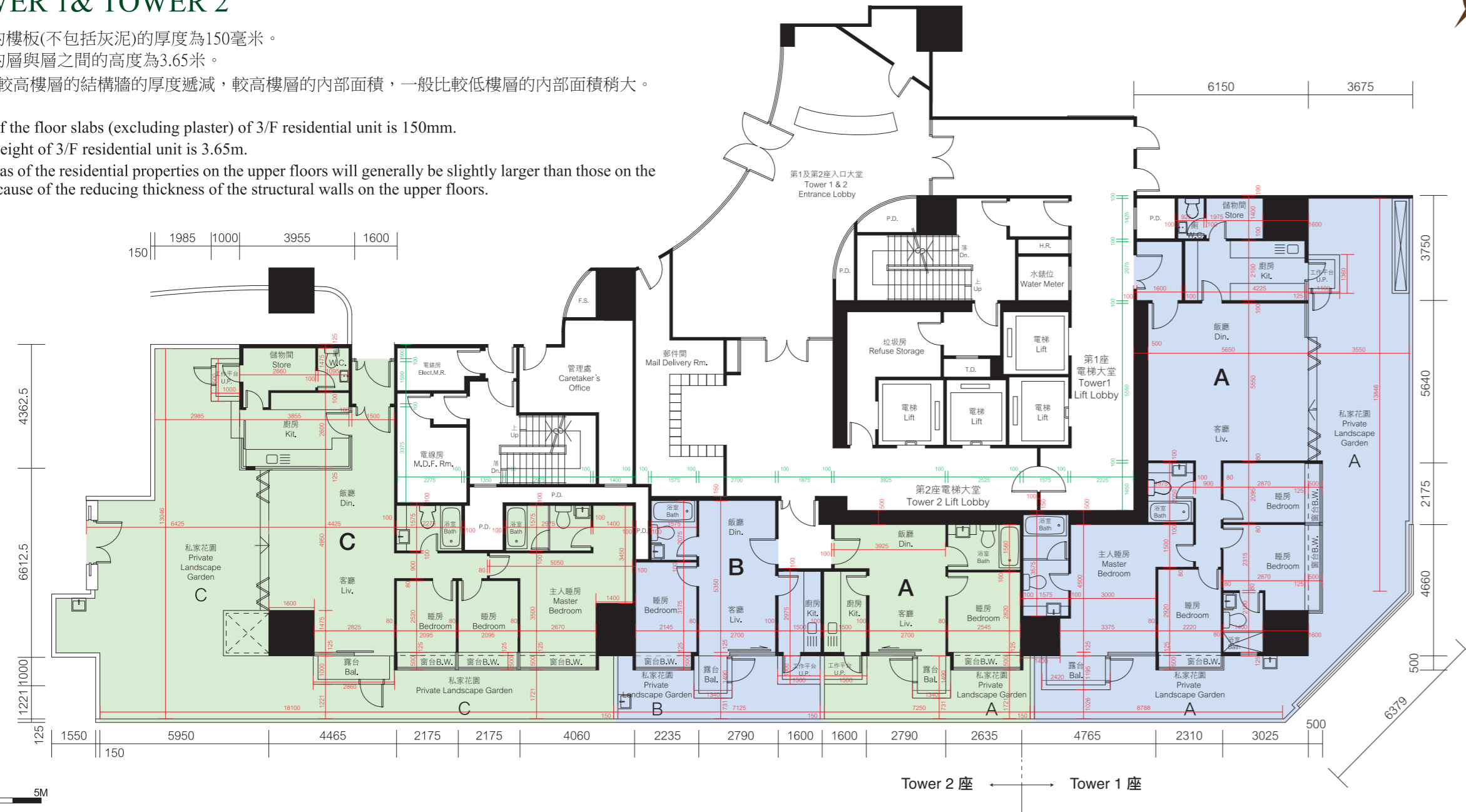
# 發展項目的住宅物業的樓面平面圖

## FLOOR PLANS OF RESIDENTIAL PROPERTIES IN THE DEVELOPMENT

### 第一及第二座3樓 3/F TOWER 1 & TOWER 2

3樓住宅單位的樓板(不包括灰泥)的厚度為150毫米。  
3樓住宅單位的層與層之間的高度為3.65米。  
因住宅物業的較高樓層的結構牆的厚度遞減,較高樓層的內部面積,一般比較低樓層的內部面積稍大。

The thickness of the floor slabs (excluding plaster) of 3/F residential unit is 150mm.  
Floor-to-floor height of 3/F residential unit is 3.65m.  
The internal areas of the residential properties on the upper floors will generally be slightly larger than those on the lower floors because of the reducing thickness of the structural walls on the upper floors.

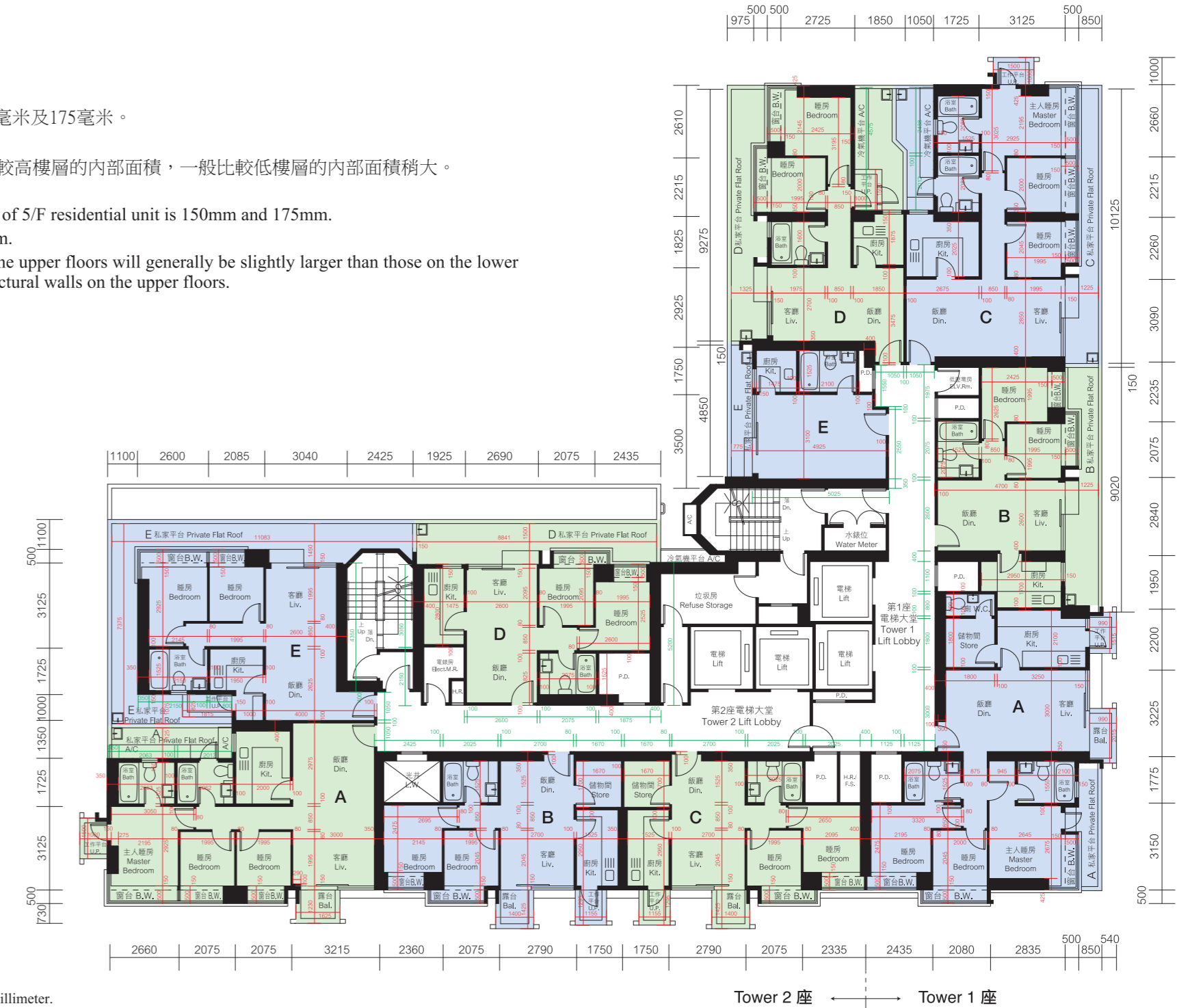


平面圖所列之數字為以毫米標示之建築結構尺寸。  
The dimensions in floor plans are all structural dimensions in millimeter.

### 第一及第二座5樓 5/F TOWER 1 & TOWER 2

5樓住宅單位的樓板(不包括灰泥)的厚度為150毫米及175毫米。  
5樓住宅單位的層與層之間的高度為3.15米。  
因住宅物業的較高樓層的結構牆的厚度遞減,較高樓層的內部面積,一般比較低樓層的內部面積稍大。

The thickness of the floor slabs (excluding plaster) of 5/F residential unit is 150mm and 175mm.  
Floor-to-floor height of 5/F residential unit is 3.15m.  
The internal areas of the residential properties on the upper floors will generally be slightly larger than those on the lower floors because of the reducing thickness of the structural walls on the upper floors.



平面圖所列之數字為以毫米標示之建築結構尺寸。  
The dimensions in floor plans are all structural dimensions in millimeter.

# 發展項目的住宅物業的樓面平面圖

## FLOOR PLANS OF RESIDENTIAL PROPERTIES IN THE DEVELOPMENT

### 第一及第二座6-11樓 6-11/F TOWER 1& TOWER 2

6樓至11樓住宅單位的樓板(不包括灰泥)的厚度為150毫米及175毫米。  
6樓至11樓住宅單位的層與層之間的高度為3.15米。  
因住宅物業的較高樓層的結構牆的厚度遞減，較高樓層的內部面積，一般比較低樓層的內部面積稍大。

The thickness of the floor slabs (excluding plaster) of 6/F to 11/F residential unit is 150mm and 175mm.  
Floor-to-floor height of 6/F to 11/F residential unit is 3.15m.  
The internal areas of the residential properties on the upper floors will generally be slightly larger than those on the lower floors because of the reducing thickness of the structural walls on the upper floors.



平面圖所列之數字為以毫米標示之建築結構尺寸。  
The dimensions in floor plans are all structural dimensions in millimeter.

### 第一及第二座12-19樓 12-19/F TOWER 1& TOWER 2

12樓至19樓住宅單位的樓板(不包括灰泥)的厚度為150毫米及175毫米。  
12樓至19樓住宅單位的層與層之間的高度為3.15米。  
因住宅物業的較高樓層的結構牆的厚度遞減，較高樓層的內部面積，一般比較低樓層的內部面積稍大。

The thickness of the floor slabs (excluding plaster) of 12/F to 19/F residential unit is 150mm and 175mm.  
Floor-to-floor height of 12/F to 19/F residential unit is 3.15m.  
The internal areas of the residential properties on the upper floors will generally be slightly larger than those on the lower floors because of the reducing thickness of the structural walls on the upper floors.



平面圖所列之數字為以毫米標示之建築結構尺寸。  
The dimensions in floor plans are all structural dimensions in millimeter.

# 發展項目的住宅物業的樓面平面圖

## FLOOR PLANS OF RESIDENTIAL PROPERTIES IN THE DEVELOPMENT

### 第一及第二座20-35樓 20-35/F TOWER 1 & TOWER 2

住宅單位的樓板(不包括灰泥)的厚度: 20樓至33樓為150毫米及175毫米; 35樓為150毫米, 175毫米及200毫米。  
住宅單位的層與層之間的高度: 20樓至33樓為3.15米; 35樓為3.25米及3.4米。  
因住宅物業的較高樓層的結構牆的厚度遞減, 較高樓層的內部面積, 一般比較低樓層的內部面積稍大。

The thickness of the floor slabs (excluding plaster) of residential unit : 20/F to 33/F is 150mm and 175mm; 35/F is 150mm, 175mm and 200mm.  
Floor-to-floor height of residential unit : 20/F to 33/F is 3.15m, 35/F is 3.25m and 3.4m.  
The internal areas of the residential properties on the upper floors will generally be slightly larger than those on the lower floors because of the reducing thickness of the structural walls on the upper floors.



平面圖所列之數字為以毫米標示之建築結構尺寸。  
The dimensions in floor plans are all structural dimensions in millimeter.

### 第一及第二座36樓 36/F TOWER 1 & TOWER 2

36樓住宅單位的樓板(不包括灰泥)的厚度為150毫米, 175毫米及225毫米。  
36樓住宅單位的層與層之間的高度為3.4米。  
因住宅物業的較高樓層的結構牆的厚度遞減, 較高樓層的內部面積, 一般比較低樓層的內部面積稍大。

The thickness of the floor slabs (excluding plaster) of 36/F residential unit is 150mm, 175mm and 225mm.  
Floor-to-floor height of 36/F residential unit is 3.4m.  
The internal areas of the residential properties on the upper floors will generally be slightly larger than those on the lower floors because of the reducing thickness of the structural walls on the upper floors.



平面圖所列之數字為以毫米標示之建築結構尺寸。  
The dimensions in floor plans are all structural dimensions in millimeter.

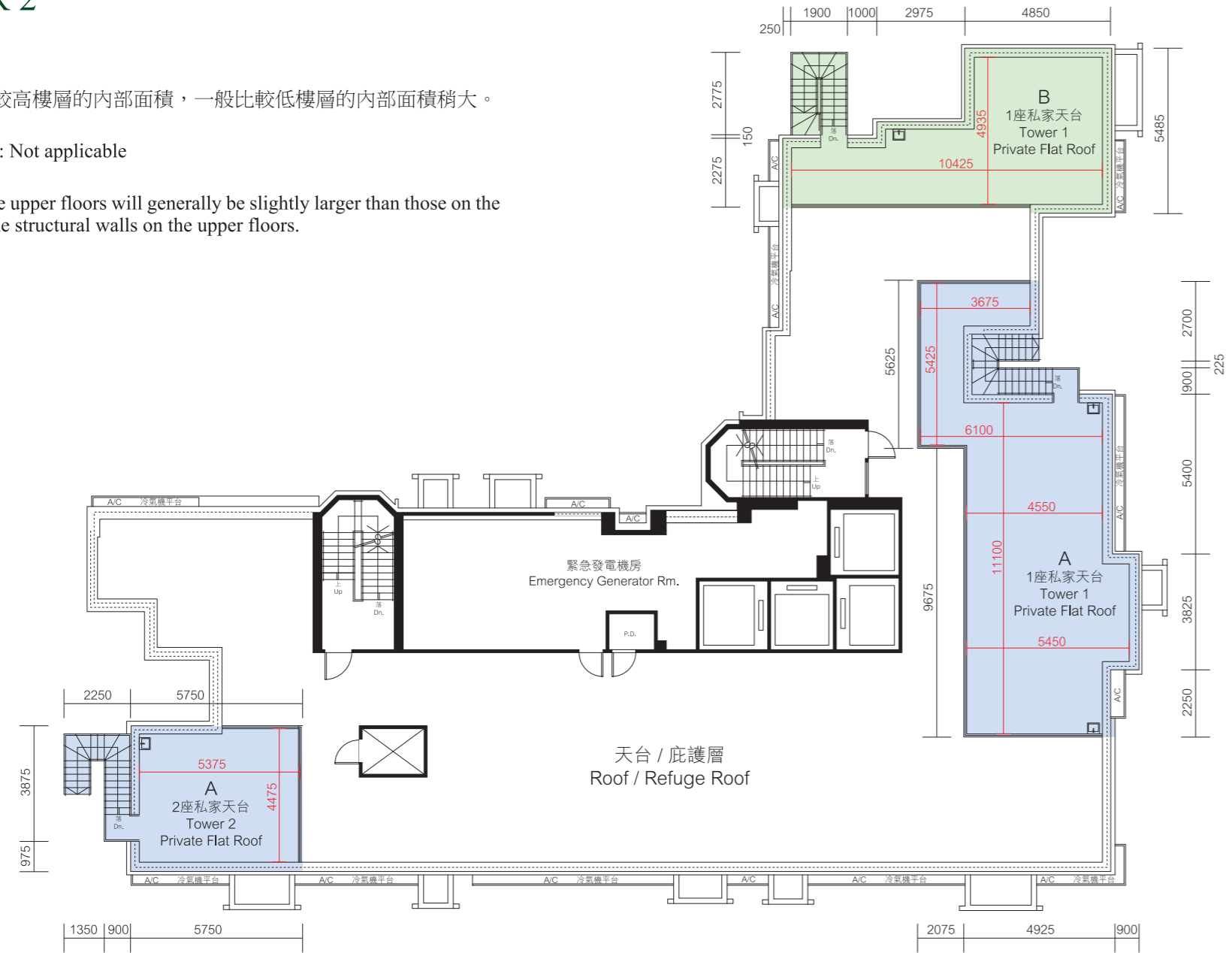
# 發展項目的住宅物業的樓面平面圖

## FLOOR PLANS OF RESIDENTIAL PROPERTIES IN THE DEVELOPMENT

### 第一及第二座天台 ROOF TOWER 1 & TOWER 2

樓板(不包括灰泥)的厚度: 不適用  
 層與層之間的高度: 不適用  
 因住宅物業的較高樓層的結構牆的厚度遞減, 較高樓層的內部面積, 一般比較低樓層的內部面積稍大。

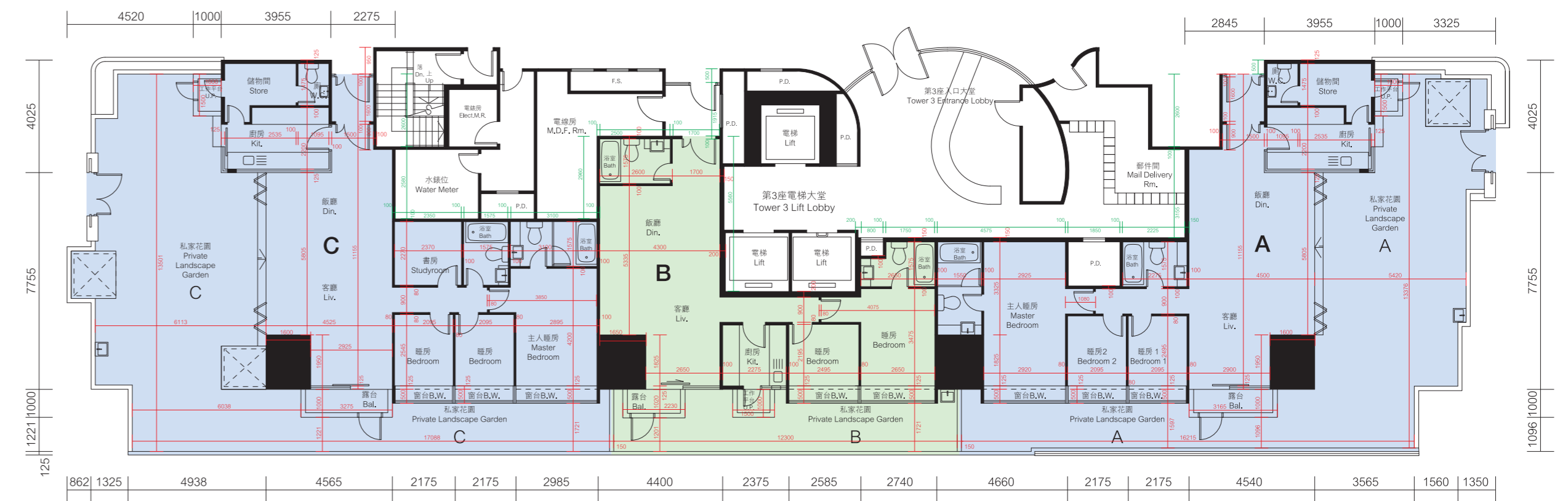
The thickness of the floor slabs (excluding plaster): Not applicable  
 Floor-to-floor height: Not applicable  
 The internal areas of the residential properties on the upper floors will generally be slightly larger than those on the lower floors because of the reducing thickness of the structural walls on the upper floors.



平面圖所列之數字為以毫米標示之建築結構尺寸。  
 The dimensions in floor plans are all structural dimensions in millimeter.



### 第三座3樓 3/F TOWER 3



平面圖所列之數字為以毫米標示之建築結構尺寸。  
 The dimensions in floor plans are all structural dimensions in millimeter.



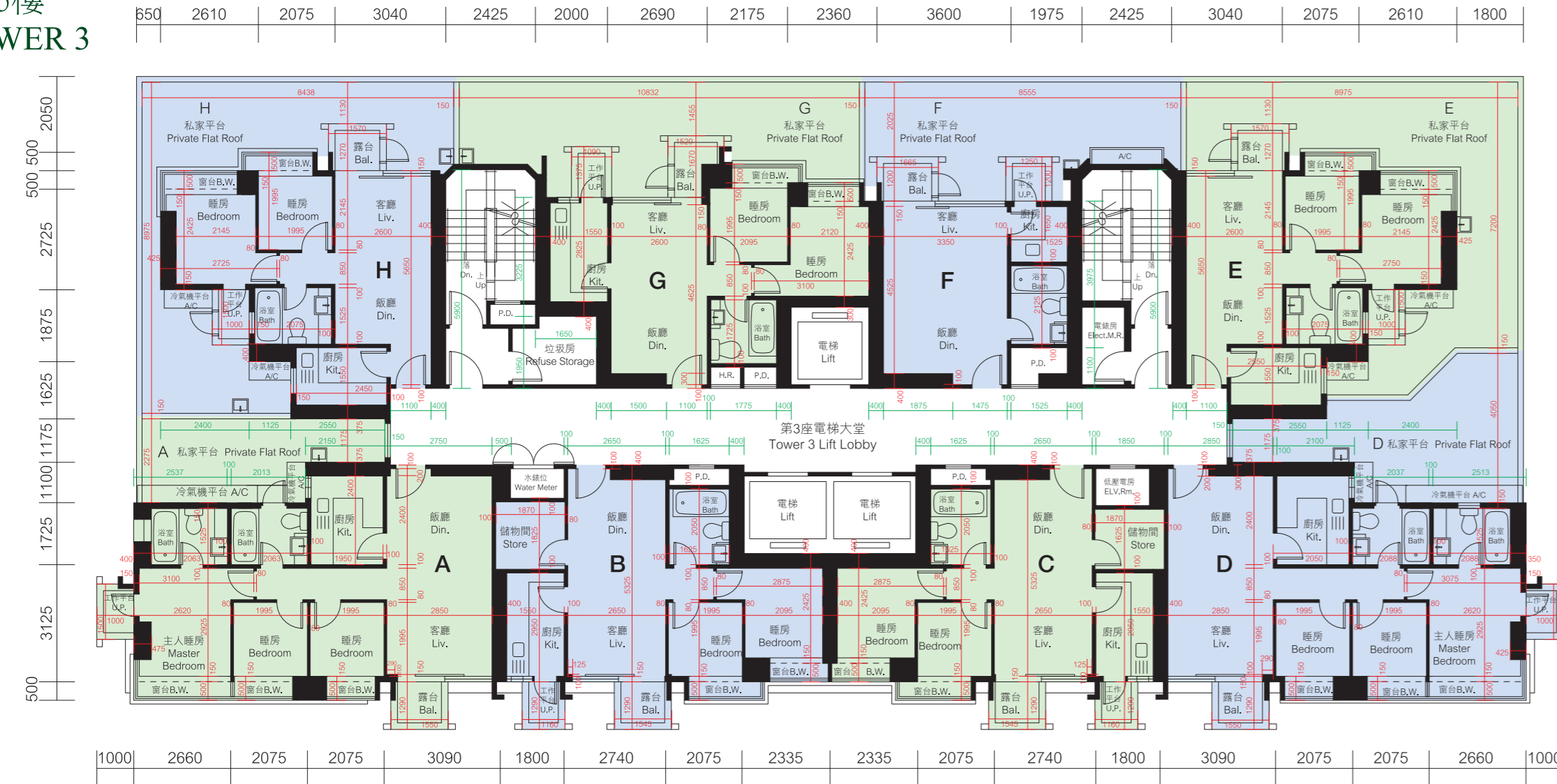
3樓住宅單位的樓板(不包括灰泥)的厚度為150毫米。  
 3樓住宅單位的層與層之間的高度為3.65米。  
 因住宅物業的較高樓層的結構牆的厚度遞減, 較高樓層的內部面積, 一般比較低樓層的內部面積稍大。

The thickness of the floor slabs (excluding plaster) of 3/F residential unit is 150mm.  
 Floor-to-floor height of 3/F residential unit is 3.65m.  
 The internal areas of the residential properties on the upper floors will generally be slightly larger than those on the lower floors because of the reducing thickness of the structural walls on the upper floors.

# 發展項目的住宅物業的樓面平面圖

## FLOOR PLANS OF RESIDENTIAL PROPERTIES IN THE DEVELOPMENT

### 第三座5樓 5/F TOWER 3



5樓住宅單位的樓板(不包括灰泥)的厚度為150毫米及175毫米。  
5樓住宅單位的層與層之間的高度為3.15米。  
因住宅物業的較高樓層的結構牆的厚度遞減，較高樓層的內部面積，一般比較低樓層的內部面積稍大。

The thickness of the floor slabs (excluding plaster) of 5/F residential unit is 150mm and 175mm.  
Floor-to-floor height of 5/F residential unit is 3.15m.

The internal areas of the residential properties on the upper floors will generally be slightly larger than those on the lower floors because of the reducing thickness of the structural walls on the upper floors.



平面圖所列之數字為以毫米標示之建築結構尺寸。  
The dimensions in floor plans are all structural dimensions in millimeter.

### 第三座6-11樓 6-11/F TOWER 3



6樓至11樓住宅單位的樓板(不包括灰泥)的厚度為150毫米及175毫米。  
6樓至11樓住宅單位的層與層之間的高度為3.15米。  
因住宅物業的較高樓層的結構牆的厚度遞減，較高樓層的內部面積，一般比較低樓層的內部面積稍大。

The thickness of the floor slabs (excluding plaster) of 6/F to 11/F residential unit is 150mm and 175mm.  
Floor-to-floor height of 6/F to 11/F residential unit is 3.15m.

The internal areas of the residential properties on the upper floors will generally be slightly larger than those on the lower floors because of the reducing thickness of the structural walls on the upper floors.



平面圖所列之數字為以毫米標示之建築結構尺寸。  
The dimensions in floor plans are all structural dimensions in millimeter.

# 發展項目的住宅物業的樓面平面圖 FLOOR PLANS OF RESIDENTIAL PROPERTIES IN THE DEVELOPMENT

第三座12-19樓  
12-19/F TOWER 3



12樓至19樓住宅單位的樓板(不包括灰泥)的厚度為150毫米及175毫米。  
12樓至19樓住宅單位的層與層之間的高度為3.15米。  
因住宅物業的較高樓層的結構牆的厚度遞減,較高樓層的內部面積,一般比較低樓層的內部面積稍大。

The thickness of the floor slabs (excluding plaster) of 12/F to 19/F residential unit is 150mm and 175mm.  
Floor-to-floor height of 12/F to 19/F residential unit is 3.15m.  
The internal areas of the residential properties on the upper floors will generally be slightly larger than those on the lower floors because of the reducing thickness of the structural walls on the upper floors.



平面圖所列之數字為以毫米標示之建築結構尺寸。  
The dimensions in floor plans are all structural dimensions in millimeter.



第三座20-25樓  
20-25/F TOWER 3



20樓至25樓住宅單位的樓板(不包括灰泥)的厚度為150毫米及175毫米。  
20樓至25樓住宅單位的層與層之間的高度為3.15米。  
因住宅物業的較高樓層的結構牆的厚度遞減,較高樓層的內部面積,一般比較低樓層的內部面積稍大。

The thickness of the floor slabs (excluding plaster) of 20/F to 25/F residential unit is 150mm and 175mm.  
Floor-to-floor height of 20/F to 25/F residential unit is 3.15m.  
The internal areas of the residential properties on the upper floors will generally be slightly larger than those on the lower floors because of the reducing thickness of the structural walls on the upper floors.



平面圖所列之數字為以毫米標示之建築結構尺寸。  
The dimensions in floor plans are all structural dimensions in millimeter.



# 發展項目的住宅物業的樓面平面圖

## FLOOR PLANS OF RESIDENTIAL PROPERTIES IN THE DEVELOPMENT

第三座26-35樓  
26-35/F TOWER 3



住宅單位的樓板(不包括灰泥)的厚度: 26樓至33樓為150毫米及175毫米; 35樓為150毫米, 175毫米及200毫米。  
住宅單位的層與層之間的高度: 26樓至33樓為3.15米; 35樓為3.25米及3.4米。  
因住宅物業的較高樓層的結構牆的厚度遞減, 較高樓層的內部面積, 一般比較低樓層的內部面積稍大。

The thickness of the floor slabs (excluding plaster) of residential unit: 26/F to 33/F is 150mm and 175mm; 35/F is 150mm, 175mm and 200mm.  
Floor-to-floor height of residential unit: 26/F to 33/F is 3.15m, 35/F is 3.25m and 3.4m.

The internal areas of the residential properties on the upper floors will generally be slightly larger than those on the lower floors because of the reducing thickness of the structural walls on the upper floors.



平面圖所列之數字為以毫米標示之建築結構尺寸。  
The dimensions in floor plans are all structural dimensions in millimeter.



第三座36樓  
36/F TOWER 3



36樓住宅單位的樓板(不包括灰泥)的厚度為150毫米及175毫米。  
36樓住宅單位的層與層之間的高度為3.4米。  
因住宅物業的較高樓層的結構牆的厚度遞減, 較高樓層的內部面積, 一般比較低樓層的內部面積稍大。

The thickness of the floor slabs (excluding plaster) of 36/F residential unit is 150mm and 175mm.  
Floor-to-floor height of 36/F residential unit is 3.4m.

The internal areas of the residential properties on the upper floors will generally be slightly larger than those on the lower floors because of the reducing thickness of the structural walls on the upper floors.

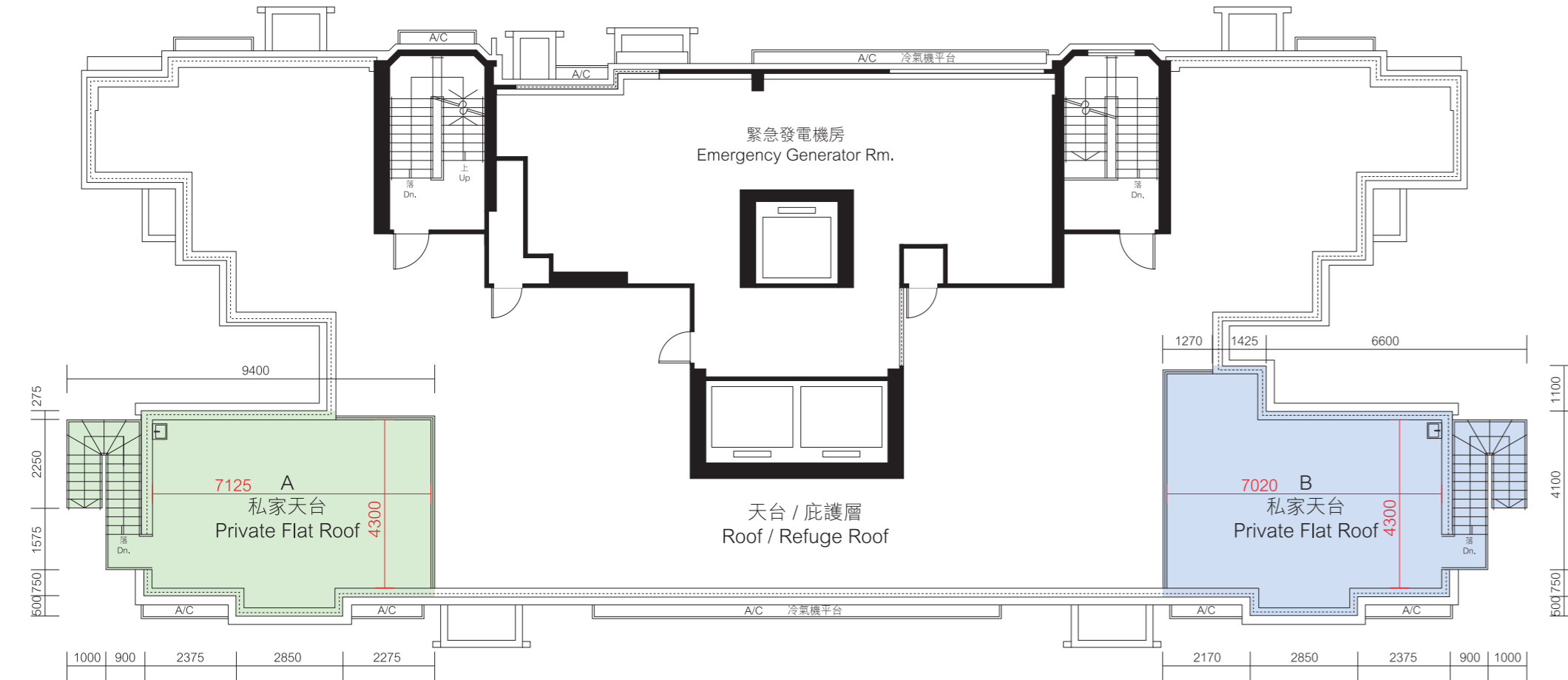


平面圖所列之數字為以毫米標示之建築結構尺寸。  
The dimensions in floor plans are all structural dimensions in millimeter.



# 發展項目的住宅物業的樓面平面圖 FLOOR PLANS OF RESIDENTIAL PROPERTIES IN THE DEVELOPMENT

## 第三座天台 ROOF TOWER 3



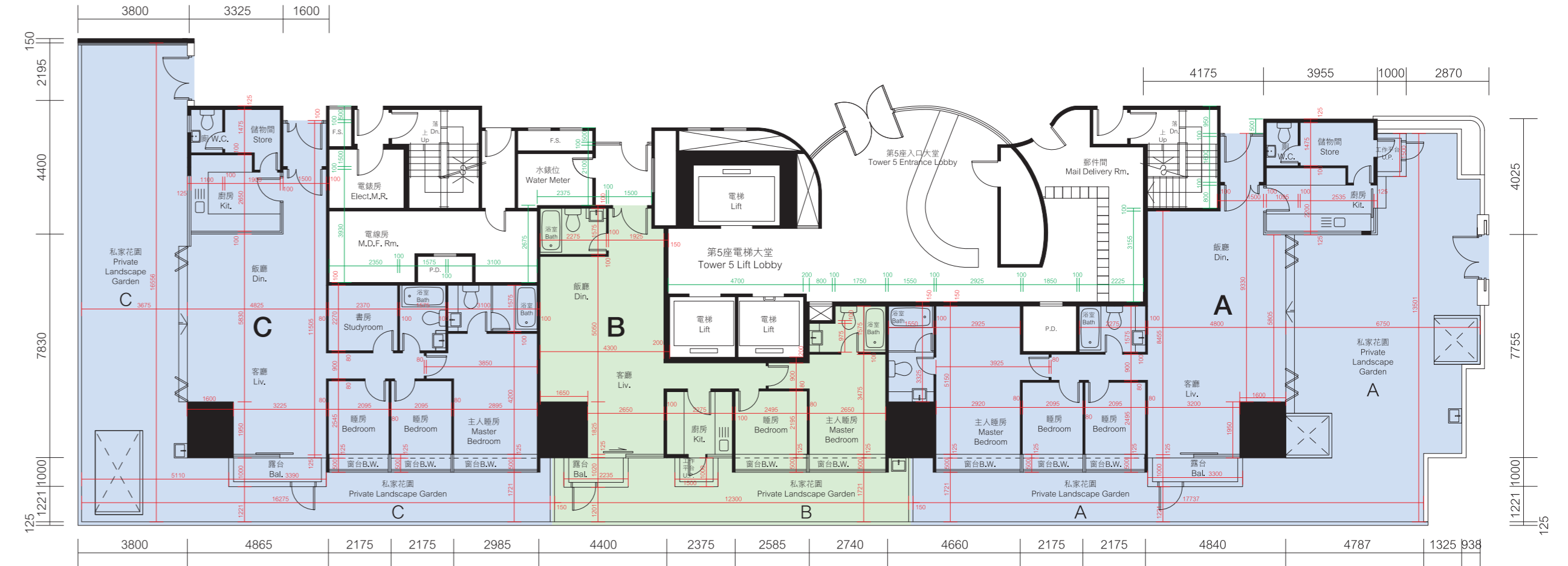
樓板(不包括灰泥)的厚度: 不適用  
層與層之間的高度: 不適用  
因住宅物業的較高樓層的結構牆的厚度遞減, 較高樓層的內部面積, 一般比較低樓層的內部面積稍大。

The thickness of the floor slabs (excluding plaster): Not applicable  
Floor-to-floor height: Not applicable  
The internal areas of the residential properties on the upper floors will generally be slightly larger than those on the lower floors because of the reducing thickness of the structural walls on the upper floors.

0M 5M

平面圖所列之數字為以毫米標示之建築結構尺寸。  
The dimensions in floor plans are all structural dimensions in millimeter.

## 第五座3樓 3/F TOWER 5



3樓住宅單位的樓板(不包括灰泥)的厚度為150毫米。  
3樓住宅單位的層與層之間的高度為3.65米。  
因住宅物業的較高樓層的結構牆的厚度遞減, 較高樓層的內部面積, 一般比較低樓層的內部面積稍大。

The thickness of the floor slabs (excluding plaster) of 3/F residential unit is 150mm.  
Floor-to-floor height of 3/F residential unit is 3.65m.  
The internal areas of the residential properties on the upper floors will generally be slightly larger than those on the lower floors because of the reducing thickness of the structural walls on the upper floors.

0M 5M

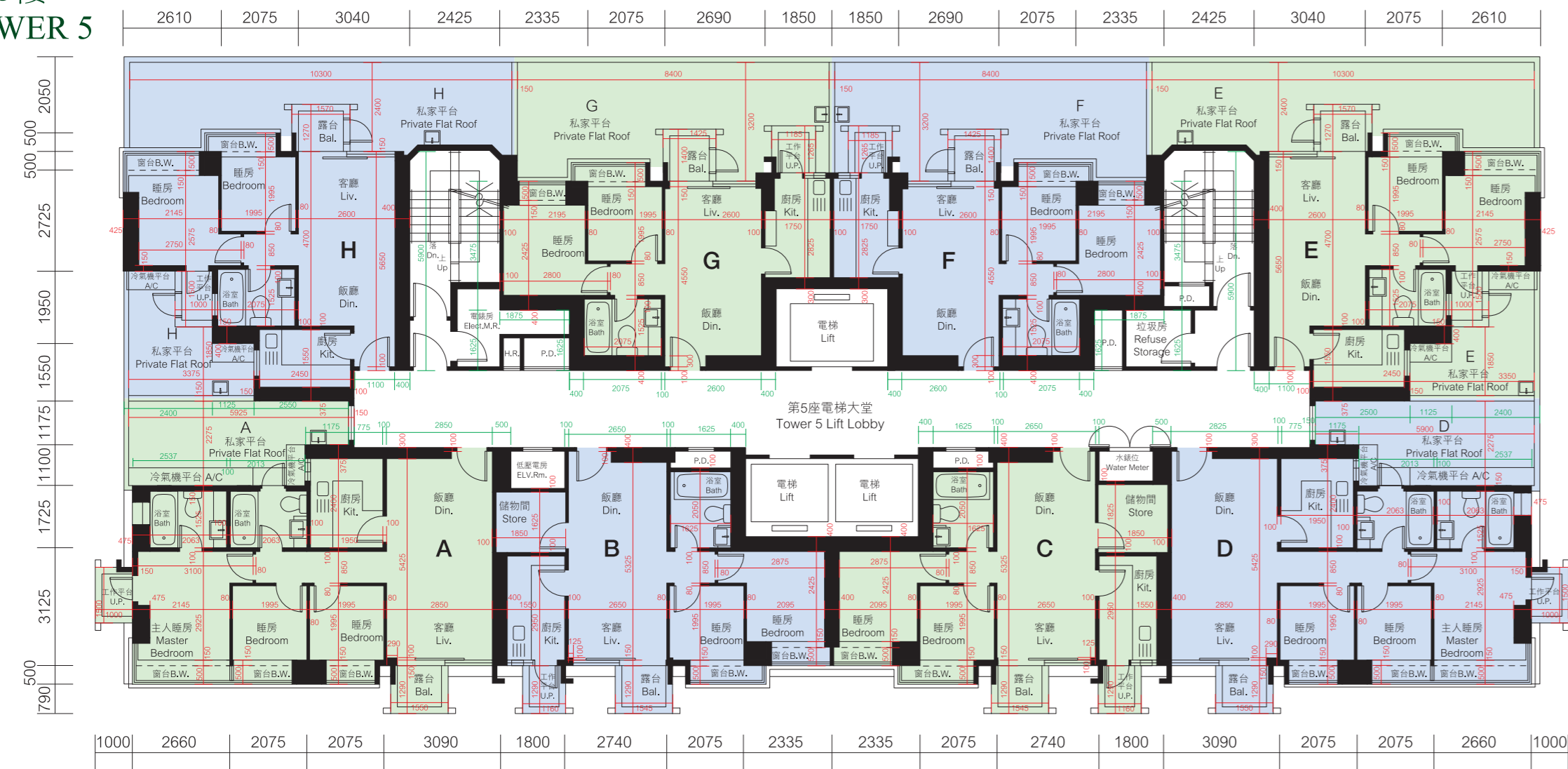
平面圖所列之數字為以毫米標示之建築結構尺寸。  
The dimensions in floor plans are all structural dimensions in millimeter.



# 發展項目的住宅物業的樓面平面圖

## FLOOR PLANS OF RESIDENTIAL PROPERTIES IN THE DEVELOPMENT

第五座5樓  
5/F TOWER 5



5樓住宅單位的樓板(不包括灰泥)的厚度為150毫米及175毫米。  
5樓住宅單位的層與層之間的高度為3.15米。  
因住宅物業的較高樓層的結構牆的厚度遞減,較高樓層的內部面積,一般比較低樓層的內部面積稍大。

The thickness of the floor slabs (excluding plaster) of 5/F residential unit is 150mm and 175mm.  
Floor-to-floor height of 5/F residential unit is 3.15m.

The internal areas of the residential properties on the upper floors will generally be slightly larger than those on the lower floors because of the reducing thickness of the structural walls on the upper floors.



平面圖所列之數字為以毫米標示之建築結構尺寸。  
The dimensions in floor plans are all structural dimensions in millimeter.

第五座6-11樓  
6-11/F TOWER 5



6樓至11樓住宅單位的樓板(不包括灰泥)的厚度為150毫米及175毫米。  
6樓至11樓住宅單位的層與層之間的高度為3.15米。  
因住宅物業的較高樓層的結構牆的厚度遞減,較高樓層的內部面積,一般比較低樓層的內部面積稍大。

The thickness of the floor slabs (excluding plaster) of 6/F to 11/F residential unit is 150mm and 175mm.  
Floor-to-floor height of 6/F to 11/F residential unit is 3.15m.

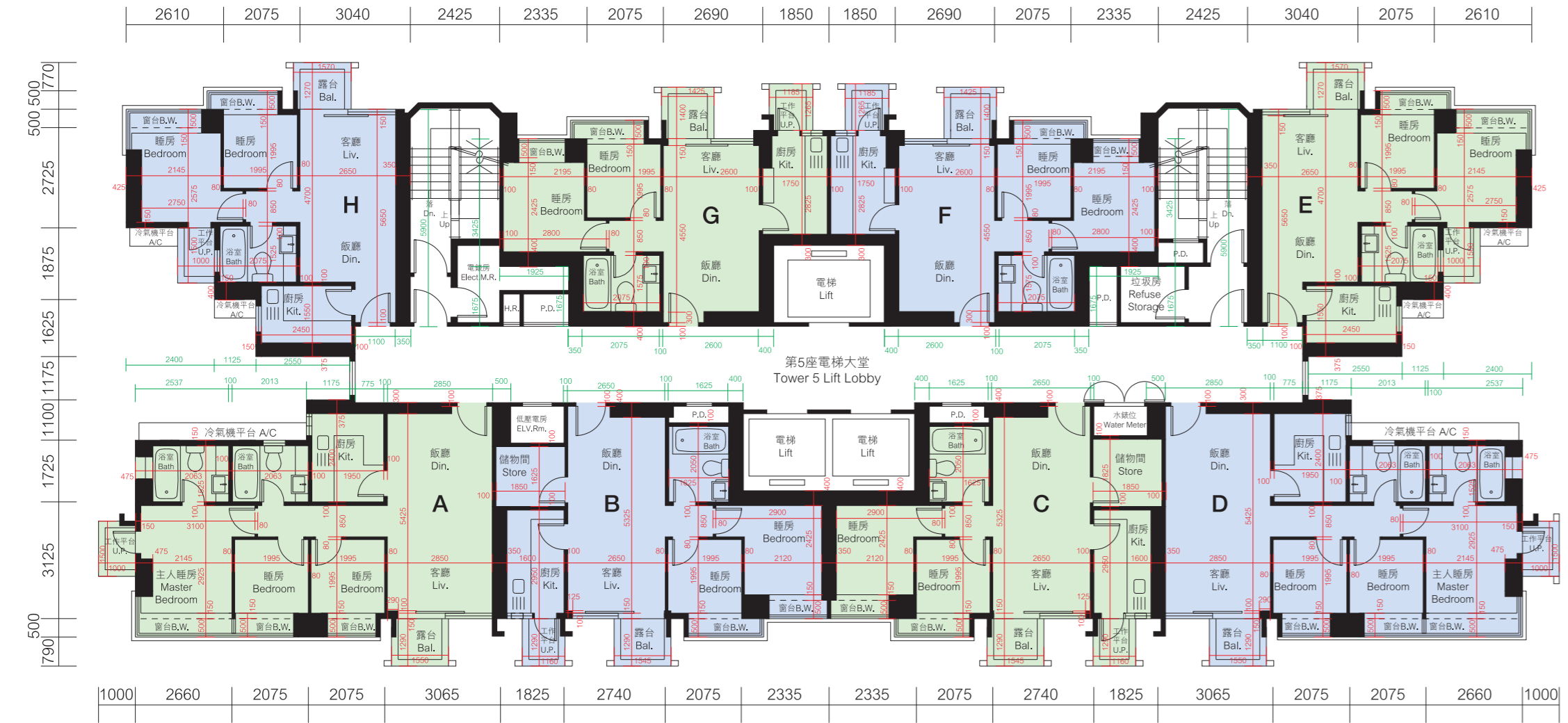
The internal areas of the residential properties on the upper floors will generally be slightly larger than those on the lower floors because of the reducing thickness of the structural walls on the upper floors.



平面圖所列之數字為以毫米標示之建築結構尺寸。  
The dimensions in floor plans are all structural dimensions in millimeter.

# 發展項目的住宅物業的樓面平面圖 FLOOR PLANS OF RESIDENTIAL PROPERTIES IN THE DEVELOPMENT

第五座12-19樓  
12-19/F TOWER 5



12樓至19樓住宅單位的樓板(不包括灰泥)的厚度為150毫米及175毫米。  
12樓至19樓住宅單位的層與層之間的高度為3.15米。  
因住宅物業的較高樓層的結構牆的厚度遞減，較高樓層的內部面積，一般比較低樓層的內部面積稍大。

The thickness of the floor slabs (excluding plaster) of 12/F to 19/F residential unit is 150mm and 175mm.  
Floor-to-floor height of 12/F to 19/F residential unit is 3.15m.  
The internal areas of the residential properties on the upper floors will generally be slightly larger than those on the lower floors because of the reducing thickness of the structural walls on the upper floors.

OM 5M  
平面圖所列之數字為以毫米標示之建築結構尺寸。  
The dimensions in floor plans are all structural dimensions in millimeter.

第五座20-25樓  
20-25/F TOWER 5



20樓至25樓住宅單位的樓板(不包括灰泥)的厚度為150毫米及175毫米。  
20樓至25樓住宅單位的層與層之間的高度為3.15米。  
因住宅物業的較高樓層的結構牆的厚度遞減，較高樓層的內部面積，一般比較低樓層的內部面積稍大。

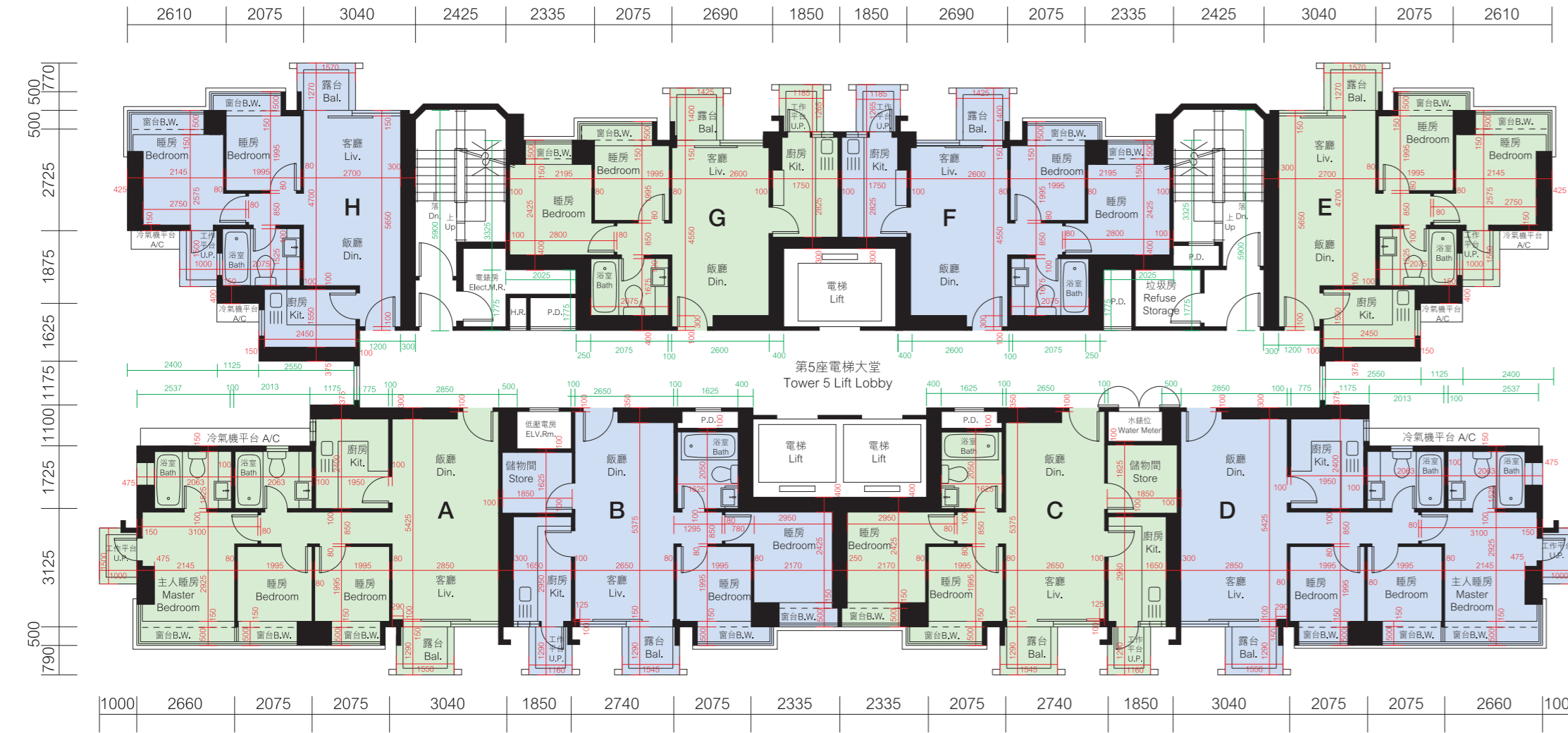
The thickness of the floor slabs (excluding plaster) of 20/F to 25/F residential unit is 150mm and 175mm.  
Floor-to-floor height of 20/F to 25/F residential unit is 3.15m.  
The internal areas of the residential properties on the upper floors will generally be slightly larger than those on the lower floors structural walls on the upper floors.

OM 5M  
平面圖所列之數字為以毫米標示之建築結構尺寸。  
The dimensions in floor plans are all structural dimensions in millimeter.

# 發展項目的住宅物業的樓面平面圖

## FLOOR PLANS OF RESIDENTIAL PROPERTIES IN THE DEVELOPMENT

第五座26-35樓  
26-35/F TOWER 5



住宅單位的樓板(不包括灰泥)的厚度: 26樓至33樓為150毫米及175毫米; 35樓為150毫米, 175毫米及200毫米。  
住宅單位的層與層之間的高度: 26樓至33樓為3.15米; 35樓為3.25米及3.4米。  
因住宅物業的較高樓層的結構牆的厚度遞減, 較高樓層的內部面積, 一般比較低樓層的內部面積稍大。

The thickness of the floor slabs (excluding plaster) of residential unit: 26/F to 33/F is 150mm and 175mm; 35/F is 150mm, 175mm and 200mm.  
Floor-to-floor height of residential unit: 26/F to 33/F is 3.15m, 35/F is 3.25m and 3.4m.  
The internal areas of the residential properties on the upper floors will generally be slightly larger than those on the lower floors because of the reducing thickness of the structural walls on the upper floors.



平面圖所列之數字為以毫米標示之建築結構尺寸。  
The dimensions in floor plans are all structural dimensions in millimeter.



第五座36樓  
36/F TOWER 5



36樓住宅單位的樓板(不包括灰泥)的厚度為150毫米, 175毫米及200毫米。  
36樓住宅單位的層與層之間的高度為3.4米。  
因住宅物業的較高樓層的結構牆的厚度遞減, 較高樓層的內部面積, 一般比較低樓層的內部面積稍大。

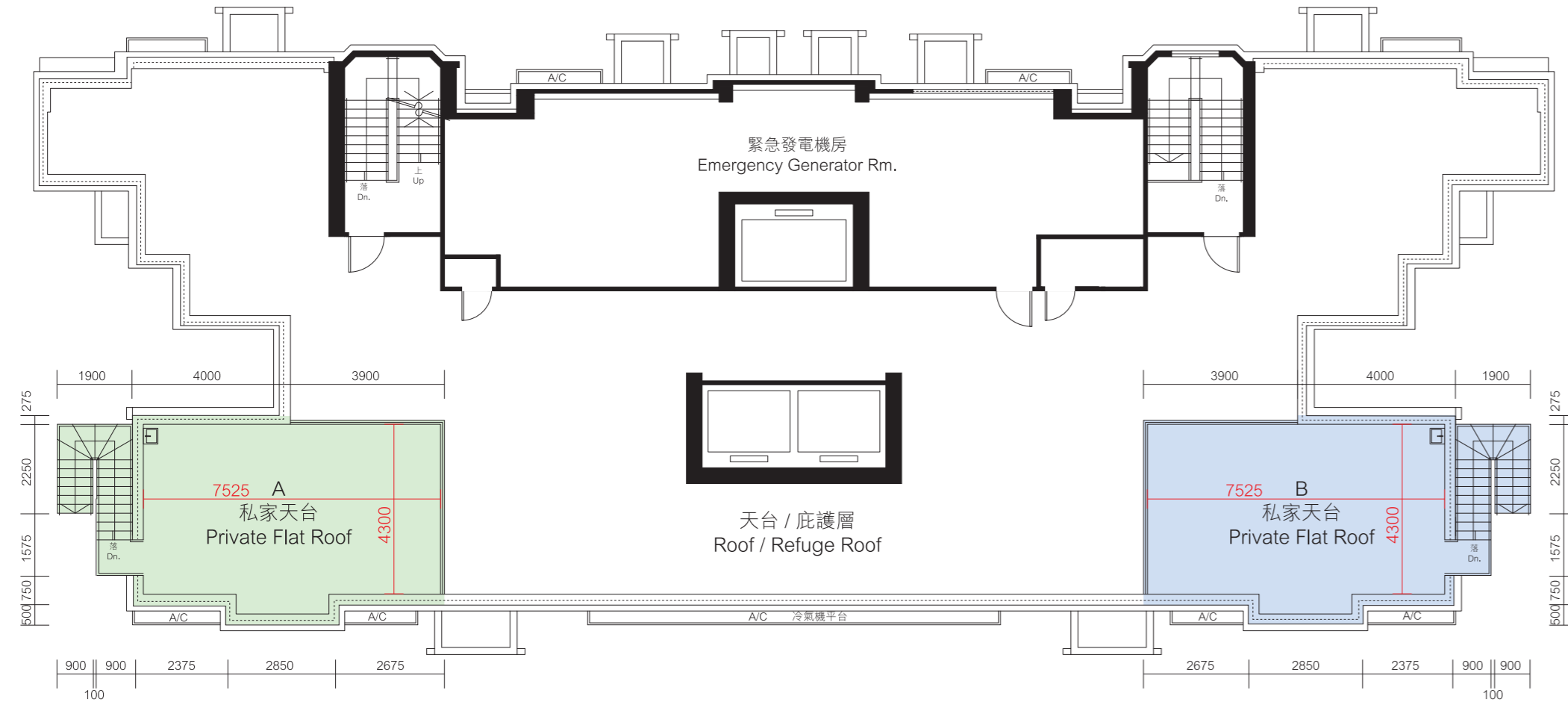
The thickness of the floor slabs (excluding plaster) of 36/F residential unit is 150mm, 175mm and 200mm.  
Floor-to-floor height of 36/F residential unit is 3.4m.  
The internal areas of the residential properties on the upper floors will generally be slightly larger than those on the lower floors because of the reducing thickness of the structural walls on the upper floors.



平面圖所列之數字為以毫米標示之建築結構尺寸。  
The dimensions in floor plans are all structural dimensions in millimeter.



### 第五座天台 ROOF TOWER 5



樓板(不包括灰泥)的厚度：不適用  
 層與層之間的高度：不適用  
 因住宅物業的較高樓層的結構牆的厚度遞減，較高樓層的內部面積，一般比較低樓層的內部面積稍大。

The thickness of the floor slabs (excluding plaster) : Not applicable  
 Floor-to-floor height : Not applicable  
 The internal areas of the residential properties on the upper floors will generally be slightly larger than those on the lower floors because of the reducing thickness of the structural walls on the upper floors.



平面圖所列之數字為以毫米標示之建築結構尺寸。  
 The dimensions in floor plans are all structural dimensions in millimeter.

下列名詞及簡稱之圖例及備註適用於“發展項目的住宅物業的樓面平面圖”中的所有頁數。  
 The legends of the terms and abbreviations and notes below are applicable for all pages in “Floor Plans of Residential Properties in the Development”.

#### 名詞及簡稱之圖例 Legends of the terms and abbreviations

A/C	= 冷氣機平台 Air-conditioning system platform	H.R.	= 喉轆 Hose reel
Bal.	= 露台 Balcony	Kit.	= 廚房 Kitchen
B.W.	= 窗台 Bay window	Liv.	= 客廳 Living room
Din.	= 飯廳 Dining room	M.D.F. Rm.	= 電線房 Main Distribution Frame Room
Dn.	= 落 Down	P.D.	= 管道槽位 Pipe duct
Elec. M.R.	= 電錶房 Electricity meter room	U.P.	= 工作平台 Utility platform
ELV. Rm.	= 超低壓電房 Extra-low voltage electricity room	W.C.	= 廁所 Water closet
F.S.	= 消防設備 Fire services		

#### 備註:

1. 部分住宅單位的露台、工作平台、平台、天台或外牆或設有外露之公用喉管，或外牆裝飾板內藏之公用喉管。
2. 部分住宅單位內之部分天花或有跌級樓板，用以安裝上層之機電設備或配合上層之結構、建築設計及/或裝修設計上的需要。
3. 部分住宅單位內或設有假陣或假天花用以安裝冷氣喉管及/或其他機電設備。

#### Notes:

1. Common pipes exposed or enclosed in cladding may be located at the balcony, utility platform, flat roof, roof or external wall of some residential units.
2. There may be sunken slabs at some parts of the ceiling inside some residential units for the installation of mechanical and electrical services of the floor above or due to the structural, architectural and/or decoration design requirements of the floor above.
3. There may be ceiling bulkheads or false ceiling inside some residential units for the installation of air-conditioning conduits and/or other mechanical and electrical services.

# 發展項目中的住宅物業的面積

## AREA OF RESIDENTIAL PROPERTIES IN THE DEVELOPMENT

### 第一座 TOWER 1

物業的描述 Description of Residential Property			實用面積 (包括露台、工作平台及陽台(如有) 平方米(平方呎) Saleable Area (including balcony, utility platform and verandah, if any) sq. metre (sq. ft.)	其他指明項目的面積(不計入實用面積) Area of other specified items (Not included in the Saleable Area) 平方米(平方呎) sq. metre (sq. ft.)									
座別 Block	樓層 Floor	單位 Unit		空調機房 Air-conditioning plant room	窗台 Bay window	閣樓 Cockloft	平台 Flat roof	花園 Garden	停車位 Parking space	天台 Roof	梯屋 Stairhood	前庭 Terrace	庭院 Yard
1	36/F	A	109.016 (1174) 露台 Balcony: 3.228 (35) 工作平台 Utility Platform: 1.5 (16)	—	4.725 (51)	—	10.127 (109)	—	—	65.588 (706)	—	—	—
		B	104.176 (1121) 露台 Balcony 2.907 (31) 工作平台 Utility Platform: 1.5 (16)	—	2.621 (28)	—	30.331 (326)	—	—	35.370 (381)	—	—	—
	20/F-35/F	A	69.867 (752) 露台 Balcony: 2.0 (22) 工作平台 Utility Platform: 1.5 (16)	—	3.750 (40)	—	—	—	—	—	—	—	—
		B	39.793 (429) 露台 Balcony: 2.0 (22) 工作平台 Utility Platform: 1.499 (16)	—	1.725 (19)	—	—	—	—	—	—	—	—
		C	59.378 (640) 露台 Balcony: 2.0 (22) 工作平台 Utility Platform: 1.5 (16)	—	3.348 (36)	—	—	—	—	—	—	—	—
		D	43.553 (469) 露台 Balcony: 2.0 (22) 工作平台 Utility Platform: 1.5 (16)	—	2.313 (25)	—	—	—	—	—	—	—	—
		E	27.877 (300) 露台 Balcony: 2.0 (22) 工作平台 Utility Platform: 1.498 (16)	—	—	—	—	—	—	—	—	—	—
		A	69.935 (753) 露台 Balcony: 2.0 (22) 工作平台 Utility Platform: 1.5 (16)	—	3.750 (40)	—	—	—	—	—	—	—	—
		B	39.873 (430) 露台 Balcony: 2.0 (22) 工作平台 Utility Platform: 1.499 (16)	—	1.725 (19)	—	—	—	—	—	—	—	—
	12/F-19/F	C	59.298 (639) 露台 Balcony: 2.0 (22) 工作平台 Utility Platform: 1.5 (16)	—	3.348 (36)	—	—	—	—	—	—	—	—
		D	43.463(468) 露台 Balcony: 2.0 (22) 工作平台 Utility Platform: 1.5 (16)	—	2.313 (25)	—	—	—	—	—	—	—	—
		E	27.877 (300) 露台 Balcony: 2.0 (22) 工作平台 Utility Platform: 1.498 (16)	—	—	—	—	—	—	—	—	—	—

物業的描述 Description of Residential Property			實用面積 (包括露台、工作平台及陽台(如有) 平方米(平方呎) Saleable Area (including balcony, utility platform and verandah, if any) sq. metre (sq. ft.)	其他指明項目的面積(不計入實用面積) Area of other specified items (Not included in the Saleable Area) 平方米(平方呎) sq. metre (sq. ft.)									
座別 Block	樓層 Floor	單位 Unit		空調機房 Air-conditioning plant room	窗台 Bay window	閣樓 Cockloft	平台 Flat roof	花園 Garden	停車位 Parking space	天台 Roof	梯屋 Stairhood	前庭 Terrace	庭院 Yard
1	6/F-11/F	A	70.003 (754) 露台 Balcony: 2.0 (22) 工作平台 Utility Platform: 1.5 (16)	—	3.750 (40)	—	—	—	—	—	—	—	—
		B	39.952 (430) 露台 Balcony 2.0 (22) 工作平台 Utility Platform: 1.499 (16)	—	1.725 (19)	—	—	—	—	—	—	—	—
		C	59.219 (638) 露台 Balcony: 2.0 (22) 工作平台 Utility Platform: 1.5 (16)	—	3.348 (36)	—	—	—	—	—	—	—	—
		D	43.463 (468) 露台 Balcony: 2.0 (22) 工作平台 Utility Platform: 1.5 (16)	—	2.313 (25)	—	—	—	—	—	—	—	—
		E	27.877 (300) 露台 Balcony: 2.0 (22) 工作平台 Utility Platform: 1.498 (16)	—	—	—	—	—	—	—	—	—	—
	5/F	A	70.003 (754) 露台 Balcony: 2.0 (22) 工作平台 Utility Platform: 1.5 (16)	—	3.300 (36)	—	3.433 (37)	—	—	—	—	—	—
		B	36.453 (392) 露台 Balcony: — 工作平台 Utility Platform: —	—	1.725 (19)	—	9.279 (100)	—	—	—	—	—	—
		C	57.219 (616) 露台 Balcony: — 工作平台 Utility Platform: 1.5 (16)	—	3.348 (36)	—	13.612 (147)	—	—	—	—	—	—
		D	41.463 (446) 露台 Balcony: — 工作平台 Utility Platform: 1.5 (16)	—	2.313 (25)	—	15.921 (171)	—	—	—	—	—	—
	3/F	A	24.379 (262) 露台 Balcony: — 工作平台 Utility Platform: —	—	—	—	3.746 (40)	—	—	—	—	—	—
			121.383(1306) 露台 Balcony: 2.892 (31) 工作平台 Utility Platform: 1.5 (16)	—	3.888 (42)	—	—	67.386 (725)	—	—	—	—	—

# 發展項目中的住宅物業的面積

## AREA OF RESIDENTIAL PROPERTIES IN THE DEVELOPMENT

### 第二座 TOWER 2

物業的描述 Description of Residential Property			實用面積 (包括露台、工作平台及陽台(如有)) 平方米(平方呎) Saleable Area (including balcony, utility platform and verandah, if any) sq. metre (sq. ft.)	其他指明項目的面積(不計入實用面積) Area of other specified items (Not included in the Saleable Area) 平方米(平方呎) sq. metre (sq. ft.)									
座別 Block	樓層 Floor	單位 Unit		空調機房 Air-conditioning plant room	窗台 Bay window	閣樓 Cockloft	平台 Flat roof	花園 Garden	停車位 Parking space	天台 Roof	梯屋 Stairhood	前庭 Terrace	庭院 Yard
2	36/F	A	101.965 (1097) 露台 Balcony: 2.886 (31) 工作平台 Utility Platform: 1.498 (16)	—	5.285 (57)	—	14.299 (154)	—	—	24.524 (264)	—	—	—
		B	58.066 (625) 露台 Balcony 2.0 (22) 工作平台 Utility Platform: 1.498 (16)	—	3.285 (35)	—	—	—	—	—	—	—	—
		C	41.645 (449) 露台 Balcony 2.0 (22) 工作平台 Utility Platform: 1.498 (16)	—	1.698 (18)	—	—	—	—	—	—	—	—
	20/F-35/F	A	59.574 (642) 露台 Balcony: 2.0 (22) 工作平台 Utility Platform: 1.5 (16)	—	2.880 (31)	—	—	—	—	—	—	—	—
		B	44.387 (478) 露台 Balcony: 2.0 (22) 工作平台 Utility Platform: 1.496 (16)	—	1.760 (19)	—	—	—	—	—	—	—	—
		C	44.293 (477) 露台 Balcony: 2.0 (22) 工作平台 Utility Platform: 1.496 (16)	—	1.910 (21)	—	—	—	—	—	—	—	—
		D	41.937 (452) 露台 Balcony: 2.0 (22) 工作平台 Utility Platform: 1.498 (16)	—	1.698 (18)	—	—	—	—	—	—	—	—
		E	47.228 (509) 露台 Balcony: 2.0 (22) 工作平台 Utility Platform: 1.497 (16)	—	1.975 (21)	—	—	—	—	—	—	—	—
		A	59.574 (642) 露台 Balcony: 2.0 (22) 工作平台 Utility Platform: 1.5 (16)	—	2.880 (31)	—	—	—	—	—	—	—	—
	12/F-19/F	B	44.387 (478) 露台 Balcony: 2.0 (22) 工作平台 Utility Platform: 1.496 (16)	—	1.760 (19)	—	—	—	—	—	—	—	—
		C	44.225 (476) 露台 Balcony: 2.0 (22) 工作平台 Utility Platform: 1.496 (16)	—	1.910 (21)	—	—	—	—	—	—	—	—
		D	41.937 (452) 露台 Balcony: 2.0 (22) 工作平台 Utility Platform: 1.498 (16)	—	1.698 (18)	—	—	—	—	—	—	—	—
		E	47.228 (509) 露台 Balcony: 2.0 (22) 工作平台 Utility Platform: 1.497 (16)	—	1.975 (21)	—	—	—	—	—	—	—	—

物業的描述 Description of Residential Property			實用面積 (包括露台、工作平台及陽台(如有)) 平方米(平方呎) Saleable Area (including balcony, utility platform and verandah, if any) sq. metre (sq. ft.)	其他指明項目的面積(不計入實用面積) Area of other specified items (Not included in the Saleable Area) 平方米(平方呎) sq. metre (sq. ft.)									
座別 Block	樓層 Floor	單位 Unit		空調機房 Air-conditioning plant room	窗台 Bay window	閣樓 Cockloft	平台 Flat roof	花園 Garden	停車位 Parking space	天台 Roof	梯屋 Stairhood	前庭 Terrace	庭院 Yard
2	6/F-11/F	A	59.574 (642) 露台 Balcony: 2.0 (22) 工作平台 Utility Platform: 1.5 (16)	—	2.880 (31)	—	—	—	—	—	—	—	—
		B	44.387 (478) 露台 Balcony 2.0 (22) 工作平台 Utility Platform: 1.496 (16)	—	1.760 (19)	—	—	—	—	—	—	—	—
		C	44.157 (475) 露台 Balcony: 2.0 (22) 工作平台 Utility Platform: 1.496 (16)	—	1.910 (21)	—	—	—	—	—	—	—	—
		D	41.937 (452) 露台 Balcony: 2.0 (22) 工作平台 Utility Platform: 1.498 (16)	—	1.698 (18)	—	—	—	—	—	—	—	—
		E	47.228 (509) 露台 Balcony: 2.0 (22) 工作平台 Utility Platform: 1.497 (16)	—	1.975 (21)	—	—	—	—	—	—	—	—
	5/F	A	59.574 (642) 露台 Balcony: 2.0 (22) 工作平台 Utility Platform: 1.5 (16)	—	2.880 (31)	—	4.978 (54)	—	—	—	—	—	—
		B	44.387 (478) 露台 Balcony: 2.0 (22) 工作平台 Utility Platform: 1.496 (16)	—	1.760 (19)	—	—	—	—	—	—	—	—
		C	44.157 (475) 露台 Balcony: 2.0 (22) 工作平台 Utility Platform: 1.496 (16)	—	1.910 (21)	—	—	—	—	—	—	—	—
		D	38.439 (414) 露台 Balcony: — 工作平台 Utility Platform: —	—	1.698 (18)	—	11.666 (126)	—	—	—	—	—	—
		E	45.228 (487) 露台 Balcony: — 工作平台 Utility Platform: 1.497 (16)	—	1.975 (21)	—	19.961 (215)	—	—	—	—	—	—
	3/F	A	39.662 (427) 露台 Balcony: 2.0 (22) 工作平台 Utility Platform: 1.5 (16)	—	1.278 (14)	—	—	11.328 (122)	—	—	—	—	—
		B	36.838 (397) 露台 Balcony: 2.0 (22) 工作平台 Utility Platform: 1.5 (16)	—	1.078 (12)	—	—	11.251 (121)	—	—	—	—	—
		C	99.571(1072) 露台 Balcony: 2.86 (31) 工作平台 Utility Platform: 1.5 (16)	—	3.600 (39)	—	—	85.399 (919)	—	—	—	—	—

# 發展項目中的住宅物業的面積

## AREA OF RESIDENTIAL PROPERTIES IN THE DEVELOPMENT

### 第三座 TOWER 3

物業的描述 Description of Residential Property			實用面積 (包括露台、工作平台及陽台(如有) 平方米(平方呎) Saleable Area (including balcony, utility platform and verandah, if any) sq. metre (sq. ft.)	其他指明項目的面積(不計入實用面積) Area of other specified items (Not included in the Saleable Area) 平方米(平方呎) sq. metre (sq. ft.)										
座別 Block	樓層 Floor	單位 Unit		空調機房 Air-conditioning plant room	窗台 Bay window	閣樓 Cockloft	平台 Flat roof	花園 Garden	停車位 Parking space	天台 Roof	梯屋 Stairhood	前庭 Terrace	庭院 Yard	
3	36/F	A	89,412 (963) 露台 Balcony: 2,581 (28) 工作平台 Utility Platform: —	—	4,655 (50)	—	9,813 (106)	—	—	32,756 (353)	—	—	—	
		B	89,424 (963) 露台 Balcony: 2,581 (28) 工作平台 Utility Platform: —	—	4,655 (50)	—	9,813 (106)	—	—	35,031 (377)	—	—	—	
		C	42,578 (459) 露台 Balcony: 2.0 (22) 工作平台 Utility Platform: 1.5 (16)	—	2,048 (22)	—	—	—	—	—	—	—	—	—
		D	74,895 (806) 露台 Balcony: 2,035 (22) 工作平台 Utility Platform: 1,499 (16)	—	3,763 (41)	—	—	—	—	—	—	—	—	—
		E	42,903 (462) 露台 Balcony: 2.0 (22) 工作平台 Utility Platform: 1.5 (16)	—	2,060 (22)	—	—	—	—	—	—	—	—	—
	26/F-35/F	A	56,951 (613) 露台 Balcony: 2.0 (22) 工作平台 Utility Platform: 1.5 (16)	—	2,868 (31)	—	—	—	—	—	—	—	—	—
		B	47,447 (511) 露台 Balcony: 2.0 (22) 工作平台 Utility Platform: 1,496 (16)	—	1,898 (20)	—	—	—	—	—	—	—	—	—
		C	47,067 (507) 露台 Balcony: 2.0 (22) 工作平台 Utility Platform: 1,496 (16)	—	1,898 (20)	—	—	—	—	—	—	—	—	—
		D	57,041 (614) 露台 Balcony: 2.0 (22) 工作平台 Utility Platform: 1.5 (16)	—	2,867 (31)	—	—	—	—	—	—	—	—	—
		E	42,573 (459) 露台 Balcony: 2.0 (22) 工作平台 Utility Platform: 1.5 (16)	—	2,060 (22)	—	—	—	—	—	—	—	—	—
		F	30,259 (326) 露台 Balcony: 2.0 (22) 工作平台 Utility Platform: 1.5 (16)	—	—	—	—	—	—	—	—	—	—	—
		G	42,301 (455) 露台 Balcony: 2.0 (22) 工作平台 Utility Platform: 1,499 (16)	—	1,710 (18)	—	—	—	—	—	—	—	—	—
		H	42,573 (459) 露台 Balcony: 2.0 (22) 工作平台 Utility Platform: 1.5 (16)	—	2,060 (22)	—	—	—	—	—	—	—	—	—
	20/F-25/F	A	57,024 (614) 露台 Balcony: 2.0 (22) 工作平台 Utility Platform: 1.5 (16)	—	2,868 (31)	—	—	—	—	—	—	—	—	—
		B	47,374 (510) 露台 Balcony: 2.0 (22) 工作平台 Utility Platform: 1,496 (16)	—	1,898 (20)	—	—	—	—	—	—	—	—	—
		C	46,994 (506) 露台 Balcony: 2.0 (22) 工作平台 Utility Platform: 1,496 (16)	—	1,898 (20)	—	—	—	—	—	—	—	—	—
		D	57,114 (615) 露台 Balcony: 2.0 (22) 工作平台 Utility Platform: 1.5 (16)	—	2,867 (31)	—	—	—	—	—	—	—	—	—
		E	42,573 (459) 露台 Balcony: 2.0 (22) 工作平台 Utility Platform: 1.5 (16)	—	2,060 (22)	—	—	—	—	—	—	—	—	—
		F	30,259 (326) 露台 Balcony: 2.0 (22) 工作平台 Utility Platform: 1.5 (16)	—	—	—	—	—	—	—	—	—	—	—
		G	42,493 (458) 露台 Balcony: 2.0 (22) 工作平台 Utility Platform: 1,499 (16)	—	1,710 (18)	—	—	—	—	—	—	—	—	—
		H	42,573 (459) 露台 Balcony: 2.0 (22) 工作平台 Utility Platform: 1.5 (16)	—	2,060 (22)	—	—	—	—	—	—	—	—	—

物業的描述 Description of Residential Property			實用面積 (包括露台、工作平台及陽台(如有) 平方米(平方呎) Saleable Area (including balcony, utility platform and verandah, if any) sq. metre (sq. ft.)	其他指明項目的面積(不計入實用面積) Area of other specified items (Not included in the Saleable Area) 平方米(平方呎) sq. metre (sq. ft.)										
座別 Block	樓層 Floor	單位 Unit		空調機房 Air-conditioning plant room	窗台 Bay window	閣樓 Cockloft	平台 Flat roof	花園 Garden	停車位 Parking space	天台 Roof	梯屋 Stairhood	前庭 Terrace	庭院 Yard	
3	12/F-19/F	A	57,098 (615) 露台 Balcony: 2.0 (22) 工作平台 Utility Platform: 1.5 (16)	—	2,868 (31)	—	—	—	—	—	—	—	—	
		B	47,300 (510) 露台 Balcony: 2.0 (22) 工作平台 Utility Platform: 1,496 (16)	—	1,898 (20)	—	—	—	—	—	—	—	—	
		C	46,920 (505) 露台 Balcony: 2.0 (22) 工作平台 Utility Platform: 1,496 (16)	—	1,898 (20)	—	—	—	—	—	—	—	—	
		D	57,188 (616) 露台 Balcony: 2.0 (22) 工作平台 Utility Platform: 1.5 (16)	—	2,867 (31)	—	—	—	—	—	—	—	—	
		E	42,573 (459) 露台 Balcony: 2.0 (22) 工作平台 Utility Platform: 1.5 (16)	—	2,060 (22)	—	—	—	—	—	—	—	—	—
		F	30,188 (325) 露台 Balcony: 2.0 (22) 工作平台 Utility Platform: 1.5 (16)	—	—	—	—	—	—	—	—	—	—	—
		G	42,753 (461) 露台 Balcony: 2.0 (22) 工作平台 Utility Platform: 1,499 (16)	—	1,710 (18)	—	—	—	—	—	—	—	—	—
		H	42,573 (459) 露台 Balcony: 2.0 (22) 工作平台 Utility Platform: 1.5 (16)	—	2,060 (22)	—	—	—	—	—	—	—	—	—
	6/F-11/F	A	57,098 (615) 露台 Balcony: 2.0 (22) 工作平台 Utility Platform: 1.5 (16)	—	2,868 (31)	—	—	—	—	—	—	—	—	—
		B	47,300 (510) 露台 Balcony: 2.0 (22) 工作平台 Utility Platform: 1,496 (16)	—	1,898 (20)	—	—	—	—	—	—	—	—	—
		C	46,920 (505) 露台 Balcony: 2.0 (22) 工作平台 Utility Platform: 1,496 (16)	—	1,898 (20)	—	—	—	—	—	—	—	—	—
		D	57,188 (616) 露台 Balcony: 2.0 (22) 工作平台 Utility Platform: 1.5 (16)	—	2,867 (31)	—	—	—	—	—	—	—	—	—
		E	42,573 (459) 露台 Balcony: 2.0 (22) 工作平台 Utility Platform: 1.5 (16)	—	2,060 (22)	—	—	—	—	—	—	—	—	—
		F	30,116 (324) 露台 Balcony: 2.0 (22) 工作平台 Utility Platform: 1.5 (16)	—	—	—	—	—	—	—	—	—	—	—
		G	43,007 (463) 露台 Balcony: 2.0 (22) 工作平台 Utility Platform: 1,499 (16)	—	1,710 (18)	—	—	—	—	—	—	—	—	—
		H	42,573 (459) 露台 Balcony: 2.0 (22) 工作平台 Utility Platform: 1.5 (16)	—	2,060 (22)	—	—	—	—	—	—	—	—	—

# 發展項目中的住宅物業的面積 AREA OF RESIDENTIAL PROPERTIES IN THE DEVELOPMENT

## 第三座 TOWER 3

物業的描述 Description of Residential Property			實用面積 (包括露台、工作平台及陽台(如有) 平方米(平方呎) Saleable Area (including balcony, utility platform and verandah, if any) sq. metre (sq. ft.)	其他指明項目的面積(不計入實用面積) Area of other specified items (Not included in the Saleable Area) 平方米(平方呎) sq. metre (sq. ft.)									
座別 Block	樓層 Floor	單位 Unit		空調機房 Air-conditioning plant room	窗台 Bay window	閣樓 Cockloft	平台 Flat roof	花園 Garden	停車位 Parking space	天台 Roof	梯屋 Stairhood	前庭 Terrace	庭院 Yard
3	5/F	A	57,098 (615) 露台 Balcony: 2.0 (22) 工作平台 Utility Platform: 1.5 (16)	—	2,868 (31)	—	12,593 (136)	—	—	—	—	—	—
		B	47,300 (510) 露台 Balcony: 2.0 (22) 工作平台 Utility Platform: 1.496 (16)	—	1,898 (20)	—	—	—	—	—	—	—	—
		C	46,920 (505) 露台 Balcony: 2.0 (22) 工作平台 Utility Platform: 1.496 (16)	—	1,898 (20)	—	—	—	—	—	—	—	—
		D	57,188 (616) 露台 Balcony: 2.0 (22) 工作平台 Utility Platform: 1.5 (16)	—	2,867 (31)	—	19,436 (209)	—	—	—	—	—	—
		E	42,573 (459) 露台 Balcony: 2.0 (22) 工作平台 Utility Platform: 1.5 (16)	—	2,060 (22)	—	31,247 (336)	—	—	—	—	—	—
		F	30,116 (324) 露台 Balcony: 2.0 (22) 工作平台 Utility Platform: 1.5 (16)	—	—	—	21,149 (228)	—	—	—	—	—	—
		G	43,007 (463) 露台 Balcony: 2.0 (22) 工作平台 Utility Platform: 1.499 (16)	—	1,710 (18)	—	24,611 (265)	—	—	—	—	—	—
		H	42,573 (459) 露台 Balcony: 2.0 (22) 工作平台 Utility Platform: 1.5 (16)	—	2,060 (22)	—	27,967 (301)	—	—	—	—	—	—
		3/F	A	107,001 (1152) 露台 Balcony: 3.165 (34) 工作平台 Utility Platform: 1.5 (16)	—	3,725 (40)	—	—	81,355 (876)	—	—	—	—
	B		76,286 (821) 露台 Balcony: 2.275 (24) 工作平台 Utility Platform: 1.5 (16)	—	2,713 (29)	—	—	20,832 (224)	—	—	—	—	—
	C		108,729 (1170) 露台 Balcony: 3.275 (35) 工作平台 Utility Platform: 1.5 (16)	—	3,713 (40)	—	—	92,668 (997)	—	—	—	—	—

## 第五座 TOWER 5

物業的描述 Description of Residential Property			實用面積 (包括露台、工作平台及陽台(如有) 平方米(平方呎) Saleable Area (including balcony, utility platform and verandah, if any) sq. metre (sq. ft.)	其他指明項目的面積(不計入實用面積) Area of other specified items (Not included in the Saleable Area) 平方米(平方呎) sq. metre (sq. ft.)										
座別 Block	樓層 Floor	單位 Unit		空調機房 Air-conditioning plant room	窗台 Bay-window	閣樓 Cockloft	平台 Flat roof	花園 Garden	停車位 Parking space	天台 Roof	梯屋 Stairhood	前庭 Terrace	庭院 Yard	
5	36/F	A	90,444 (973) 露台 Balcony: 2.613 (28) 工作平台 Utility Platform: —	—	4,655 (50)	—	8,935 (96)	—	—	34,489 (371)	—	—	—	
		B	90,444 (973) 露台 Balcony: 2.613 (28) 工作平台 Utility Platform: —	—	4,655 (50)	—	8,935 (96)	—	—	34,489 (371)	—	—	—	
		C	42,916 (462) 露台 Balcony: 2.0 (22) 工作平台 Utility Platform: 1.5 (16)	—	2,048 (22)	—	—	—	—	—	—	—	—	—
		D	42,086 (453) 露台 Balcony: 2.0 (22) 工作平台 Utility Platform: 1.499 (16)	—	1,688 (18)	—	—	—	—	—	—	—	—	—
		E	42,086 (453) 露台 Balcony: 2.0 (22) 工作平台 Utility Platform: 1.499 (16)	—	1,688 (18)	—	—	—	—	—	—	—	—	—
		F	42,578 (459) 露台 Balcony: 2.0 (22) 工作平台 Utility Platform: 1.5 (16)	—	2,048 (22)	—	—	—	—	—	—	—	—	—
	26/F-35/F	A	57,040 (614) 露台 Balcony: 2.0 (22) 工作平台 Utility Platform: 1.5 (16)	—	2,868 (31)	—	—	—	—	—	—	—	—	—
		B	47,067 (507) 露台 Balcony: 2.0 (22) 工作平台 Utility Platform: 1.496 (16)	—	1,898 (20)	—	—	—	—	—	—	—	—	—
		C	47,447 (511) 露台 Balcony: 2.0 (22) 工作平台 Utility Platform: 1.496 (16)	—	1,898 (20)	—	—	—	—	—	—	—	—	—
		D	56,951 (613) 露台 Balcony: 2.0 (22) 工作平台 Utility Platform: 1.5 (16)	—	2,868 (31)	—	—	—	—	—	—	—	—	—
		E	42,586 (459) 露台 Balcony: 2.0 (22) 工作平台 Utility Platform: 1.5 (16)	—	2,048 (22)	—	—	—	—	—	—	—	—	—
		F	42,086 (453) 露台 Balcony: 2.0 (22) 工作平台 Utility Platform: 1.499 (16)	—	1,688 (18)	—	—	—	—	—	—	—	—	—
		G	42,086 (453) 露台 Balcony: 2.0 (22) 工作平台 Utility Platform: 1.499 (16)	—	1,688 (18)	—	—	—	—	—	—	—	—	—
		H	42,586 (459) 露台 Balcony: 2.0 (22) 工作平台 Utility Platform: 1.5 (16)	—	2,048 (22)	—	—	—	—	—	—	—	—	—
	20/F-25/F	A	57,040 (614) 露台 Balcony: 2.0 (22) 工作平台 Utility Platform: 1.5 (16)	—	2,868 (31)	—	—	—	—	—	—	—	—	—
		B	47,067 (507) 露台 Balcony: 2.0 (22) 工作平台 Utility Platform: 1.496 (16)	—	1,898 (20)	—	—	—	—	—	—	—	—	—
		C	47,447 (511) 露台 Balcony: 2.0 (22) 工作平台 Utility Platform: 1.496 (16)	—	1,898 (20)	—	—	—	—	—	—	—	—	—
		D	56,951 (613) 露台 Balcony: 2.0 (22) 工作平台 Utility Platform: 1.5 (16)	—	2,868 (31)	—	—	—	—	—	—	—	—	—
		E	42,586 (459) 露台 Balcony: 2.0 (22) 工作平台 Utility Platform: 1.5 (16)	—	2,048 (22)	—	—	—	—	—	—	—	—	—
		F	42,273 (455) 露台 Balcony: 2.0 (22) 工作平台 Utility Platform: 1.499 (16)	—	1,688 (18)	—	—	—	—	—	—	—	—	—
		G	42,273 (455) 露台 Balcony: 2.0 (22) 工作平台 Utility Platform: 1.499 (16)	—	1,688 (18)	—	—	—	—	—	—	—	—	—
		H	42,586 (459) 露台 Balcony: 2.0 (22) 工作平台 Utility Platform: 1.5 (16)	—	2,048 (22)	—	—	—	—	—	—	—	—	—



# 發展項目中的住宅物業的面積

## AREA OF RESIDENTIAL PROPERTIES IN THE DEVELOPMENT

### 第五座 TOWER 5

物業的描述 Description of Residential Property			實用面積 (包括露台、工作平台及陽台(如有) 平方米(平方呎) Saleable Area (including balcony, utility platform and verandah, if any) sq. metre (sq. ft.)	其他指明項目的面積(不計入實用面積) Area of other specified items (Not included in the Saleable Area) 平方米(平方呎) sq. metre (sq. ft.)										
座別 Block	樓層 Floor	單位 Unit		空調機房 Air-conditioning plant room	窗台 Bay window	閣樓 Cockloft	平台 Flat roof	花園 Garden	停車位 Parking space	天台 Roof	梯屋 Stairhood	前庭 Terrace	庭院 Yard	
5	12/F-19/F	A	57,114 (615) 露台 Balcony: 2.0 (22) 工作平台 Utility Platform: 1.5 (16)	—	2,868 (31)	—	—	—	—	—	—	—	—	
		B	46,994 (506) 露台 Balcony: 2.0 (22) 工作平台 Utility Platform: 1.496 (16)	—	1,898 (20)	—	—	—	—	—	—	—	—	
		C	47,374 (510) 露台 Balcony: 2.0 (22) 工作平台 Utility Platform: 1.496 (16)	—	1,898 (20)	—	—	—	—	—	—	—	—	—
		D	57,024 (614) 露台 Balcony: 2.0 (22) 工作平台 Utility Platform: 1.5 (16)	—	2,868 (31)	—	—	—	—	—	—	—	—	—
		E	42,586 (459) 露台 Balcony: 2.0 (22) 工作平台 Utility Platform: 1.5 (16)	—	2,048 (22)	—	—	—	—	—	—	—	—	—
		F	42,456 (457) 露台 Balcony: 2.0 (22) 工作平台 Utility Platform: 1.499 (16)	—	1,688 (18)	—	—	—	—	—	—	—	—	—
		G	42,456 (457) 露台 Balcony: 2.0 (22) 工作平台 Utility Platform: 1.499 (16)	—	1,688 (18)	—	—	—	—	—	—	—	—	—
		H	42,586 (459) 露台 Balcony: 2.0 (22) 工作平台 Utility Platform: 1.5 (16)	—	2,048 (22)	—	—	—	—	—	—	—	—	—
	6/F-11/F	A	57,188 (616) 露台 Balcony: 2.0 (22) 工作平台 Utility Platform: 1.5 (16)	—	2,868 (31)	—	—	—	—	—	—	—	—	—
		B	46,920 (505) 露台 Balcony: 2.0 (22) 工作平台 Utility Platform: 1.496 (16)	—	1,898 (20)	—	—	—	—	—	—	—	—	—
		C	47,300 (510) 露台 Balcony: 2.0 (22) 工作平台 Utility Platform: 1.496 (16)	—	1,898 (20)	—	—	—	—	—	—	—	—	—
		D	57,098 (615) 露台 Balcony: 2.0 (22) 工作平台 Utility Platform: 1.5 (16)	—	2,868 (31)	—	—	—	—	—	—	—	—	—
		E	42,586 (459) 露台 Balcony: 2.0 (22) 工作平台 Utility Platform: 1.5 (16)	—	2,048 (22)	—	—	—	—	—	—	—	—	—
		F	42,633 (459) 露台 Balcony: 2.0 (22) 工作平台 Utility Platform: 1.499 (16)	—	1,688 (18)	—	—	—	—	—	—	—	—	—
		G	42,633 (459) 露台 Balcony: 2.0 (22) 工作平台 Utility Platform: 1.499 (16)	—	1,688 (18)	—	—	—	—	—	—	—	—	—
		H	42,586 (459) 露台 Balcony: 2.0 (22) 工作平台 Utility Platform: 1.5 (16)	—	2,048 (22)	—	—	—	—	—	—	—	—	—

物業的描述 Description of Residential Property			實用面積 (包括露台、工作平台及陽台(如有) 平方米(平方呎) Saleable Area (including balcony, utility platform and verandah, if any) sq. metre (sq. ft.)	其他指明項目的面積(不計入實用面積) Area of other specified items (Not included in the Saleable Area) 平方米(平方呎) sq. metre (sq. ft.)									
座別 Block	樓層 Floor	單位 Unit		空調機房 Air-conditioning plant room	窗台 Bay window	閣樓 Cockloft	平台 Flat roof	花園 Garden	停車位 Parking space	天台 Roof	梯屋 Stairhood	前庭 Terrace	庭院 Yard
5	5/F	A	57,188 (616) 露台 Balcony: 2.0 (22) 工作平台 Utility Platform: 1.5 (16)	—	2,868 (31)	—	12,187 (131)	—	—	—	—	—	—
		B	46,920 (505) 露台 Balcony: 2.0 (22) 工作平台 Utility Platform: 1.496 (16)	—	1,898 (20)	—	—	—	—	—	—	—	—
		C	47,300 (510) 露台 Balcony: 2.0 (22) 工作平台 Utility Platform: 1.496 (16)	—	1,898 (20)	—	—	—	—	—	—	—	—
		D	57,098 (615) 露台 Balcony: 2.0 (22) 工作平台 Utility Platform: 1.5 (16)	—	2,868 (31)	—	12,130 (131)	—	—	—	—	—	—
		E	42,586 (459) 露台 Balcony: 2.0 (22) 工作平台 Utility Platform: 1.5 (16)	—	2,048 (22)	—	28,381 (305)	—	—	—	—	—	—
		F	42,633 (459) 露台 Balcony: 2.0 (22) 工作平台 Utility Platform: 1.499 (16)	—	1,688 (18)	—	21,372 (230)	—	—	—	—	—	—
		G	42,633 (459) 露台 Balcony: 2.0 (22) 工作平台 Utility Platform: 1.499 (16)	—	1,688 (18)	—	21,372 (230)	—	—	—	—	—	—
		H	42,586 (459) 露台 Balcony: 2.0 (22) 工作平台 Utility Platform: 1.5 (16)	—	2,048 (22)	—	28,465 (306)	—	—	—	—	—	—
	3/F	A	110,693 (1192) 露台 Balcony: 3.3 (36) 工作平台 Utility Platform: 1.5 (16)	—	3,725 (40)	—	—	92,168 (992)	—	—	—	—	—
		B	74,712 (805) 露台 Balcony: 2.28 (25) 工作平台 Utility Platform: 1.5 (16)	—	2,713 (29)	—	—	20,826 (224)	—	—	—	—	—
		C	108,727 (1170) 露台 Balcony: 3.39 (36) 工作平台 Utility Platform: —	—	3,713 (40)	—	—	81,726 (880)	—	—	—	—	—

實用面積及屬該住宅物業其他指明項目的面積是按《一手住宅物業銷售條例》第8條及附表二第2部的計算分別得出的。  
The saleable area and area of other specified items of the residential property are calculated respectively in accordance with Section 8 and Part 2 of Schedule 2 of the Residential Properties (First-hand Sales) Ordinance.