

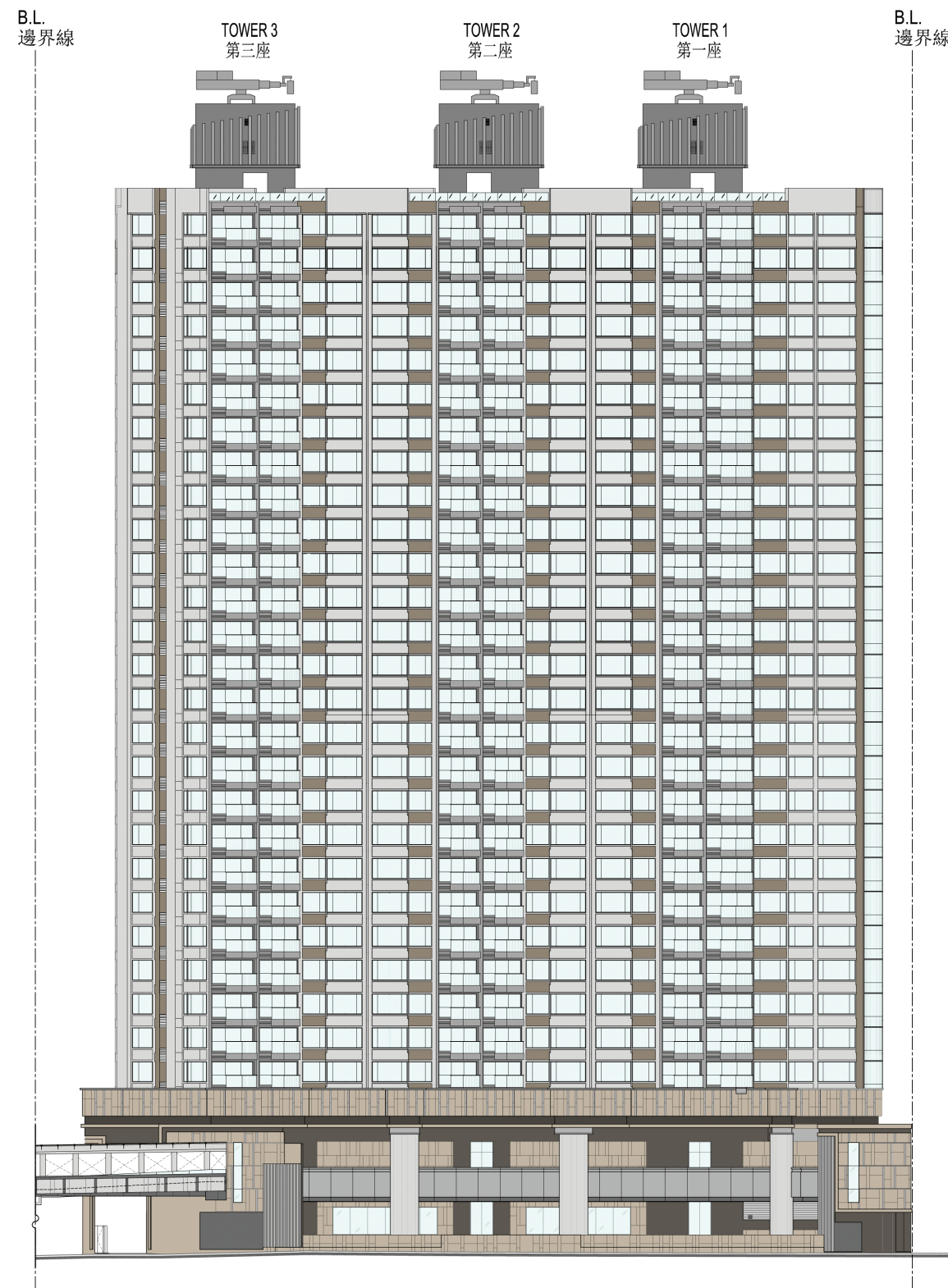
索引圖 KEY PLAN

發展項目的邊界
BOUNDARY OF THE DEVELOPMENT

0M (米) 10M (米) 20M (米) 30M (米)
比例 Scale



N(北)



ELEVATION A
立面圖 A

發展項目的認可人士已經證明該等立面：

- (a) 以2015年11月6日的情況為準的發展項目的經批准的建築圖則為基礎擬備；及
- (b) 大致上與發展項目的外觀一致。

It has been certified by the Authorized Person for the Development that the elevations:

- (a) are prepared on the basis of the approved building plans for the Development as of 6th November 2015; and
- (b) are in general accordance with the outward appearance of the Development.



ELEVATION B
立面圖 B

發展項目的認可人士已經證明該等立面：

- (a) 以2015年11月6日的情況為準的發展項目的經批准的建築圖則為基礎擬備；及
- (b) 大致上與發展項目的外觀一致。

It has been certified by the Authorized Person for the Development that the elevations:

- (a) are prepared on the basis of the approved building plans for the Development as of 6th November 2015; and
- (b) are in general accordance with the outward appearance of the Development.



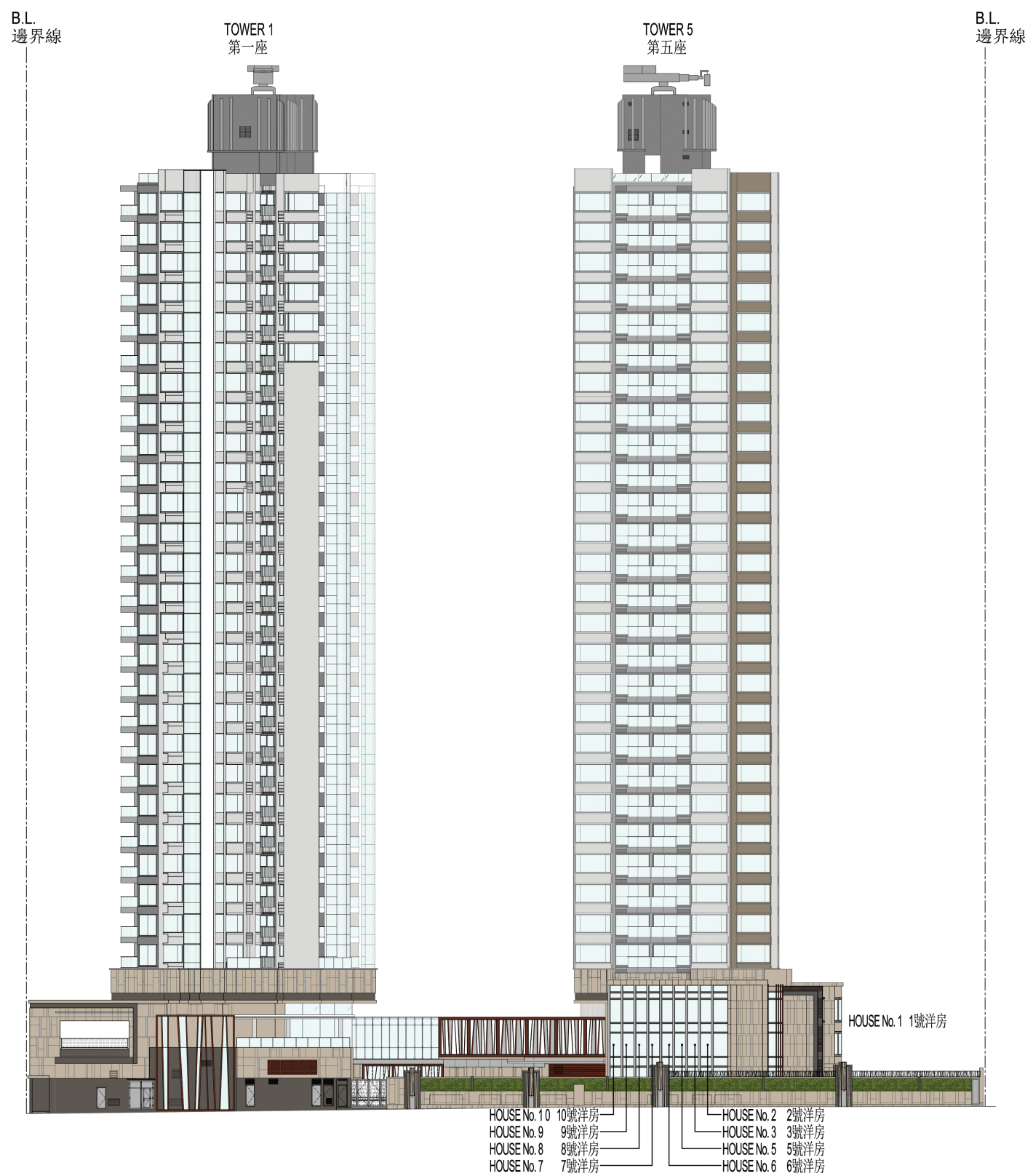
ELEVATION C
立面圖 C

發展項目的認可人士已經證明該等立面：

- (a) 以2015年11月6日的情況為準的發展項目的經批准的建築圖則為基礎擬備；及
- (b) 大致上與發展項目的外觀一致。

It has been certified by the Authorized Person for the Development that the elevations:

- (a) are prepared on the basis of the approved building plans for the Development as of 6th November 2015; and
- (b) are in general accordance with the outward appearance of the Development.



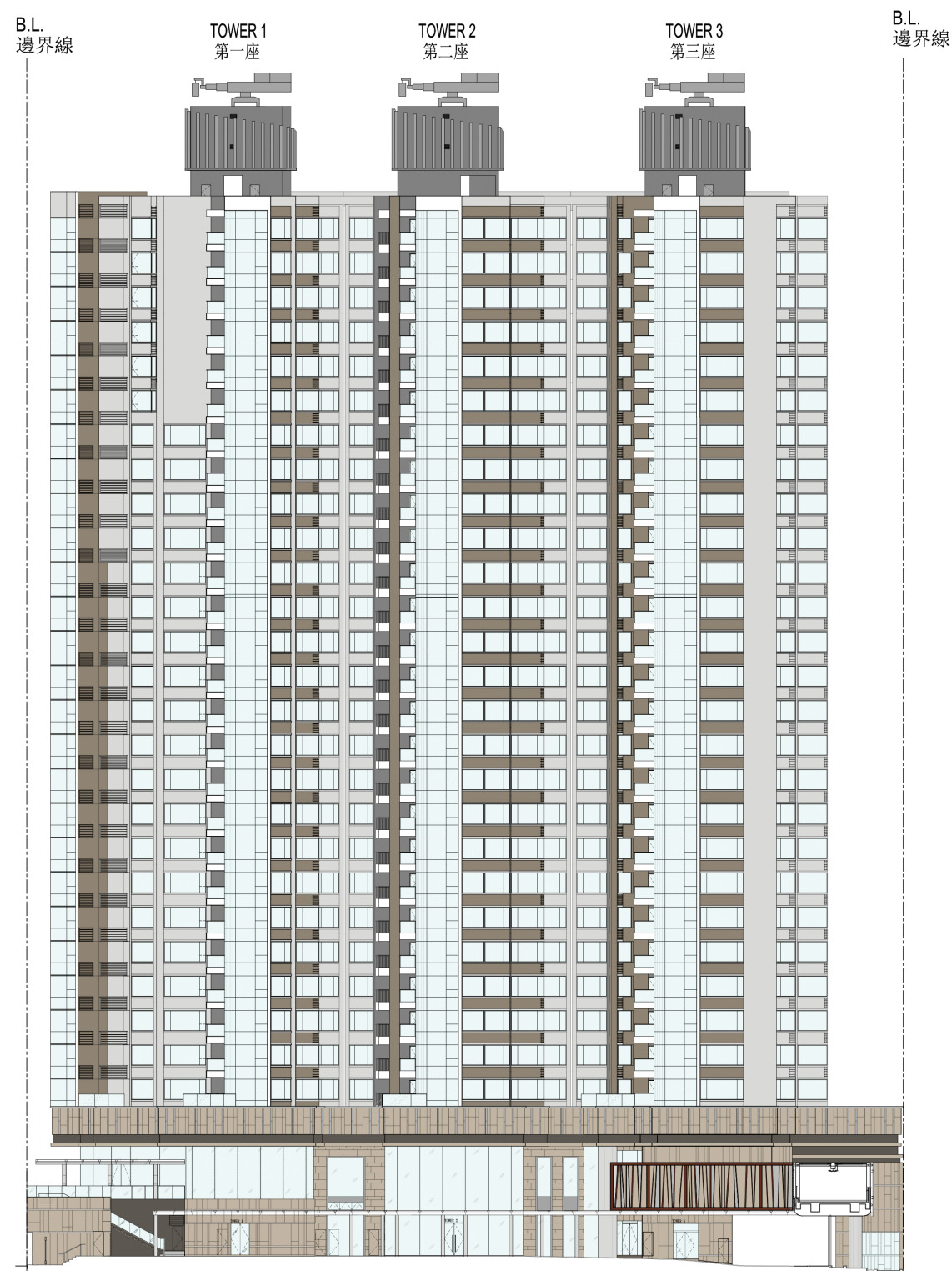
ELEVATION D
立面圖 D

發展項目的認可人士已經證明該等立面：

- (a) 以2015年11月6日的情況為準的發展項目的經批准的建築圖則為基礎擬備；及
- (b) 大致上與發展項目的外觀一致。

It has been certified by the Authorized Person for the Development that the elevations:

- (a) are prepared on the basis of the approved building plans for the Development as of 6th November 2015; and
- (b) are in general accordance with the outward appearance of the Development.



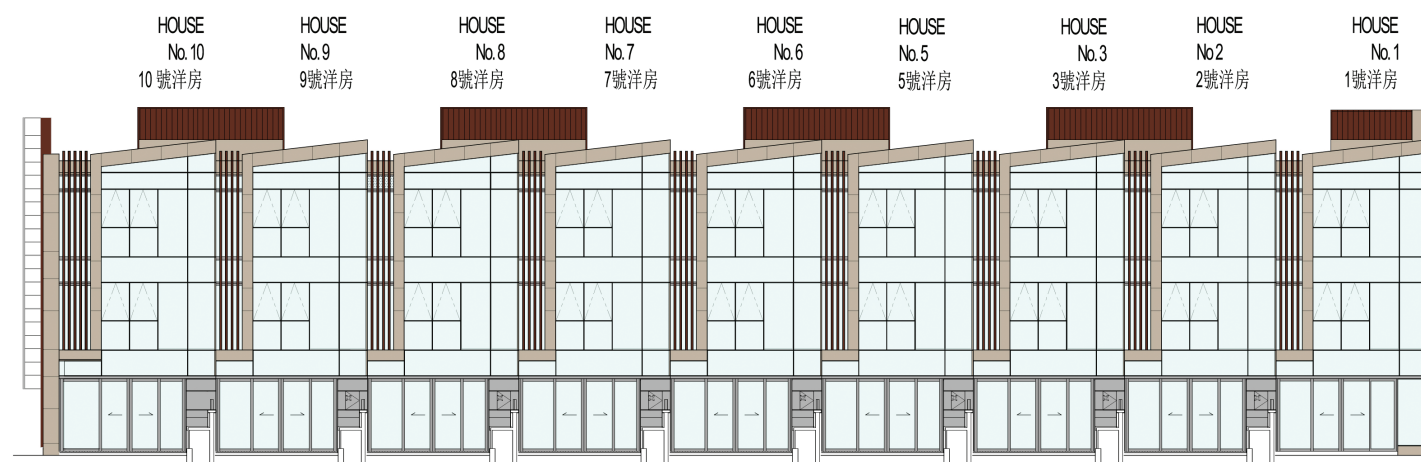
ELEVATION E
立面圖 E

發展項目的認可人士已經證明該等立面：

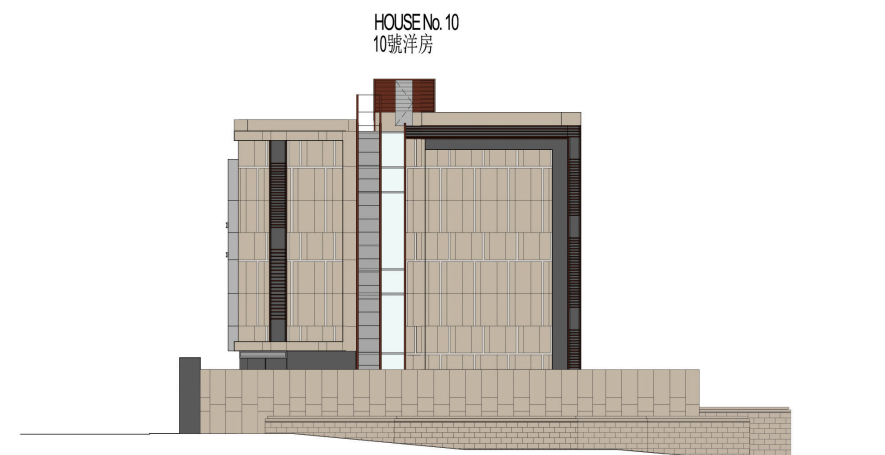
- (a) 以2015年11月6日的情況為準的發展項目的經批准的建築圖則為基礎擬備；及
- (b) 大致上與發展項目的外觀一致。

It has been certified by the Authorized Person for the Development that the elevations:

- (a) are prepared on the basis of the approved building plans for the Development as of 6th November 2015; and
- (b) are in general accordance with the outward appearance of the Development.



ELEVATION F
立面圖 F



ELEVATION G
立面圖 G

發展項目的認可人士已經證明該等立面：

- (a) 以2015年11月6日的情況為準的發展項目的經批准的建築圖則為基礎擬備；及
- (b) 大致上與發展項目的外觀一致。

It has been certified by the Authorized Person for the Development that the elevations:

- (a) are prepared on the basis of the approved building plans for the Development as of 6th November 2015; and
- (b) are in general accordance with the outward appearance of the Development.

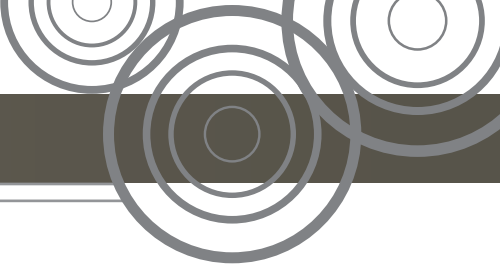
公用設施的類別 Category of common facilities	有蓋範圍 Covered Area		無上蓋範圍 Uncovered Area		總面積 Total Area	
	面積 Area (sq. m. 平方米)	面積 Area (sq. ft. 平方呎)	面積 Area (sq. m. 平方米)	面積 Area (sq. ft. 平方呎)	面積 Area (sq. m. 平方米)	面積 Area (sq. ft. 平方呎)
住客會所(包括供住客使用的任何康樂設施) Residents' clubhouse (including any recreational facilities for residents' use)	625.429	6,732	763.624	8,220	1,389.053	14,952
位於發展項目中的建築物的天台或在天台和最低一層住宅樓層之間的任何一層的、供住客使用的公用花園或遊樂地方(不論是稱為公用空中花園或有其他名稱) Communal garden or play area for residents' use on the roof, or on any floor between the roof and the lowest residential floor, of a building in the Development (whether known as a communal sky garden or otherwise)	不適用 Not Applicable					
位於發展項目中的建築物的最低一層住宅樓層以下的、供住客使用的公用花園或遊樂地方(不論是稱為有蓋及園景的遊樂場或有其他名稱) Communal garden or play area for residents' use below the lowest residential floor of a building in the Development (whether known as a covered and landscaped play area or otherwise):	11.159	120	516.876	5,564	528.035	5,684

備註：以平方呎顯示之上述面積以1平方米 = 10.7639平方呎換算，並四捨五入至整數。

Note : The areas as specified above in square feet are converted at a rate of 1 square metre = 10.7639 square feet and rounded off to the nearest integer.

1. 關於發展項目的分區計劃大綱圖的文本供閱覽的互聯網網站的網址為：www.ozp.tpb.gov.hk
2. 指明住宅物業的每一已簽立的公契的文本存放在指明住宅物業的售樓處，以供閱覽。無須為閱覽付費。

1. The address of the website on which a copy of the outline zoning plan relating to the Development is available is: www.ozp.tpb.gov.hk.
2. A copy of every deed of mutual covenant in respect of the specified residential property that has been executed is available for inspection at the place at which the specified residential property is offered to be sold. The inspection is free of charge.



大廈

1. 外部裝修物料	
細項	描述
(a) 外牆	大廈外牆 鋪砌瓷磚、鋁質飾面、鋁質護柵及玻璃幕牆。 平台外牆 鋪砌瓷磚、鋁質飾面、鋁質護柵、玻璃幕牆及天然石。
(b) 窗	所有窗戶選用鋁質窗框。 客廳、飯廳、睡房及工人房採用透明玻璃。 廚房選用透明玻璃(以下單位除外)，以下單位廚房則採用半透明玻璃： 第1座A單位 第1座C單位 第3座C單位 浴室及洗手間選用半透明玻璃。
(c) 窗台	鋼筋混凝土窗台配以鋁質窗戶。 窗台板鋪砌天然石。
(d) 花槽	不適用
(e) 陽台或露台	露台有蓋。 露台裝置透明玻璃圍欄及鋁質扶手、露台板鋪砌天然石。 地台鋪砌天然石。 牆壁鋪砌瓷磚。 天花裝置鋁板。 沒有陽台。
(f) 乾衣設施	沒有
2. 室內裝修物料	
細項	描述
(a) 大堂	住宅入口大堂 地台鋪砌天然石。 牆壁鋪砌天然石、木材、木皮裝飾面板、裝飾鏡、不銹鋼裝飾及玻璃面板至見光處。 天花裝置髹上乳膠漆的石膏板。 各層電梯大堂 地台鋪砌天然石。 牆壁鋪砌天然石、裝飾鏡、不銹鋼裝飾及玻璃面板至見光處。 天花裝置髹上乳膠漆的石膏板。

(b) 內牆及天花板	客廳、飯廳及睡房 <u>所有單位(第3座17樓B單位、第3座29樓B單位及第5座10樓A單位除外)</u> 牆壁及天花均批盪後髹上乳膠漆至見光處，部份天花位置裝置髹上乳膠漆的石膏板。 <u>第3座17樓B單位</u> - 客廳及飯廳牆壁鋪貼牆紙。 - 主人睡房、睡房1、2及3部份牆壁貼牆紙及批盪後髹上乳膠漆至見光處。 - 客廳、飯廳、主人睡房、睡房1、2及3天花批盪後髹上乳膠漆至見光處，部份天花位置裝置髹上乳膠漆的石膏板及木製燈槽。 <u>第3座29樓B單位</u> - 客廳及飯廳牆壁鋪貼牆紙、裝飾鏡及天然石。 - 主人睡房牆壁鋪貼牆紙、不銹鋼飾面及裝飾鏡。 - 睡房1牆壁鋪貼牆紙及捫布板作裝飾。 - 睡房2牆壁鋪貼牆紙及木飾面作裝飾。 - 睡房3牆壁鋪貼牆紙及捫皮革飾面板作裝飾。 - 客廳、飯廳、主人睡房、睡房1、2及3天花批盪後髹上乳膠漆至見光處，部份天花位置裝置髹上乳膠漆的石膏板及木製燈槽。 <u>第5座10樓A單位</u> - 客廳及飯廳牆壁鋪貼牆紙及不銹鋼飾面。 - 主人睡房牆壁鋪貼牆紙、不銹鋼飾面、裝飾鏡、木飾面及捫布板作裝飾。 - 睡房1及3牆壁鋪貼牆紙、不銹鋼飾面及捫布板作裝飾。睡房2牆壁鋪貼牆紙作裝飾。 - 客廳、飯廳、主人睡房、睡房1、2及3天花批盪後髹上乳膠漆至見光處，部份天花位置裝置髹上乳膠漆的石膏板及木製燈槽。
(c) 內部地板	客廳、飯廳及睡房 <u>所有單位(第3座29樓B單位及第5座10樓A單位除外)</u> 地台鋪砌實木複合地板連木牆腳線。 通往露台門口地板邊緣鋪砌天然石圍邊。 <u>第3座29樓B單位</u> - 客廳、飯廳、主人睡房、睡房1、2及3地台見光處鋪砌天然石連不銹鋼飾面木牆腳線。 <u>第5座10樓A單位</u> - 客廳及飯廳地台見光處鋪砌天然石連不銹鋼飾面木牆腳線。

	- 主人睡房、睡房1、2及3地台見光處鋪砌瓷磚連木牆腳線。
(d) 浴室	浴室 <u>所有單位(第5座10樓A單位浴室3除外)</u> 地台鋪砌天然石至見光處。 牆壁鋪砌天然石、天然貝母及鏡至假天花見光處。 天花裝置鋁質及髹上乳膠漆的石膏板假天花。 <u>第5座10樓A單位浴室3</u> 部份牆身為透明玻璃間隔，其餘牆身飾面、天花及地台與交樓標準相同。 洗手間 地台鋪砌均質磚。 牆壁鋪砌瓷磚至假天花見光處。 天花裝置鋁質假天花。
(e) 廚房	地台鋪砌天然石至見光處。 牆壁鋪砌天然石及不銹鋼板至假天花見光處。 天花裝置鋁質及髹上乳膠漆的石膏板假天花。 灶台面選用天然石。
3. 室內裝置	
細項	描述
(a) 門	住宅單位大門 實心木門配以木皮飾面，配門鎖及手柄、防盜眼、防盜鏈及氣鼓。 睡房門 空心木門配以木皮飾面，配門鎖及手柄。 浴室門 <u>所有單位(第2座C單位浴室2、第3座29樓B單位浴室1、第5座10樓A單位浴室1及3除外)</u> 空心木門配以木皮飾面，配門鎖及手柄。 <u>第2座C單位浴室2</u> 半透明玻璃門，配門栓及把手。 <u>第3座29樓B單位浴室1</u> 空心木門配以木皮飾面及天然石飾面，配門鎖及手柄。 <u>第5座10樓A單位浴室1</u> 空心木門配以木皮飾面、裝飾鏡及不銹鋼飾面，配門鎖及手柄。 <u>第5座10樓A單位浴室3</u> 透明玻璃門，配手柄。

	<p>廚房門 所有單位(第5座10樓A單位除外) 實心木門配以木皮飾面，門身鑲有玻璃，並配氣鼓及手柄。</p> <p>第5座10樓A單位 實心木門配以木皮飾面，門身鑲有玻璃、牆紙及不銹鋼飾面，並配氣鼓及手柄。</p> <p>儲物房門 第1座B單位、第1座C單位、第2座A單位、第3座B單位及第5座A單位 鋁質趟摺百葉門，配門鎖。</p> <p>第2座B單位及第3座A單位 鋁框半透明玻璃門，配門鎖及手柄。</p> <p>第2座C單位 空心木門配以木皮飾面，配門鎖及手柄。</p> <p>工人房門 第1座A單位及第3座C單位 鋁框半透明玻璃門，配門鎖及手柄。</p> <p>第5座B單位 鋁質趟摺百葉門，配門鎖。</p> <p>洗手間門 第1座A單位、第2座C單位及第3座A單位 空心木門配以木皮飾面，配門鎖及手柄。</p> <p>第1座B單位、第1座C單位、第2座A單位、第3座B單位及第5座A單位 鋁框半透明玻璃門，配門鎖及手柄。</p> <p>第2座B單位、第3座C單位及第5座B單位 半透明玻璃門，配門鎖及手柄。</p> <p>露台門 鋁框玻璃門，配門鎖及手柄。</p> <p>工作平台門及前庭門 鋁框玻璃門，配門鎖及手柄。</p>	<p>- 第1座B單位、第1座C單位、第2座A單位、第2座B單位、第2座C單位、第3座A單位、第3座C單位及第5座C單位的浴室1</p> <p>- 玻璃淋浴間於：</p> <p>- 第1座A單位、第1座B單位、第2座A單位、第2座B單位、第3座A單位、第3座B單位及第5座A單位的浴室2</p> <p>- 第5座B單位(25樓至31樓)的浴室2</p> <p>- 第1座A單位、第3座B單位及第5座A單位的浴室3</p> <p>提供膠面煤氣熱水爐遙控器。</p> <p>供水系統的類型及用料見下文「供水」一欄。</p> <p>洗手間 配置鏡、搪瓷坐廁、搪瓷洗面盆、鍍鉻洗面盆冷熱水龍頭連手握淋浴花灑套裝及鍍鉻廁紙架。</p> <p>供水系統的類型及用料見下文「供水」一欄。</p>	<p>總電掣箱。有關電插座、接線電掣及空調機接駁點、抽氣扇開關掣之數目及位置，請參考「住宅單位機電裝置數量說明表」。</p>
(h) 氣體供應	煤氣。氣體供應之系統及位置，請參考「住宅單位機電裝置數量說明表」。		
(i) 洗衣機接駁點	洗衣機接駁點之位置及設計，請參考「住宅單位機電裝置數量說明表」。		
(j) 供水	冷熱水喉管全部採用有膠層保護之銅喉。有熱水供應。浴室、洗手間及廚房之熱水由煤氣熱水爐供應。水管部份隱藏、部份外露。所有外露喉管均安裝於假天花、裝飾橫樑、廚櫃內或安裝在洗面盆之下。		
4. 雜項			
細項	描述		
(a) 升降機	<p>其士(Chevalier)“Toshiba”型號ELBRIGHT (CL300W)住客升降機如下：</p> <p>第1座</p> <p>- 2部：升降機到達地庫2至31樓各層</p> <p>第2座</p> <p>- 2部：升降機到達地庫2至31樓各層</p> <p>第3座</p> <p>- 2部：升降機到達地庫2至31樓各層</p> <p>第5座</p> <p>- 2部：升降機到達地庫2至31樓各層</p> <p>其士(Chevalier)“Toshiba”型號SPACEL-UNI (CV300) 住客升降機如下：</p> <p>- 1部：升降機到達地庫2至1樓</p>		
(b) 信箱	信箱用料為金屬。		
(c) 垃圾收集	住宅樓層設有垃圾及物料回收室，由清潔工人收集垃圾。地下設有垃圾及物料回收房中央處理所收集的垃圾。		
(d) 水錶、電錶及氣體錶	<p>每層公用電錶房/水錶房內均裝有每戶專用之獨立電錶及水錶。</p> <p>所有單位廚房內均安裝獨立煤氣錶。</p>		
5. 保安設施			
	入口大堂及所有電梯內均裝有閉路電視鏡頭。設有八達通卡開啟入口大堂大門。		
	發展項目設有車輛管控系統。		

賣方承諾，如發展項目中沒有安裝分別於第4(a)及6細項指明的品牌名稱或產品型號的升降機或設備，便會安裝品質相若的升降機或設備。

備註：住宅樓層不設4樓、13樓、14樓及24樓。

6. 設備			第一座						第二座						第三座						第五座						
			2樓-30樓			31樓			2樓-30樓			31樓			2樓-30樓			31樓			2樓-30樓			31樓			
設備	品牌名稱	產品型號	A	B	C	A	B	C	A	B	C	A	B	C	A	B	C	A	B	C	A	B	C	A	B	C	
雪櫃	Miele	KFNS37232iD	✓	✓	✓	✓	✓	✓	✓	✓	✓	✓	✓	✓	✓	✓	✓	✓	✓	✓	✓	✓	✓	✓	✓	✓	
煤氣煮食爐		CS1018	✓	✓	✓	✓	✓	✓	✓	✓	✓	✓	✓	✓	✓	✓	✓	✓	✓	✓	✓	✓	✓	✓	✓	✓	
電煮食爐		CS1212-1i	✓	✓	✓	✓	✓	✓	✓	✓	✓	✓	✓	✓	✓	✓	✓	✓	✓	✓	✓	✓	✓	✓	✓	✓	
迷你雪櫃		K9122Ui	✓	-	-	✓	-	-	-	-	-	-	-	-	-	✓	-	-	✓	-	✓	-	-	✓	-	-	
抽油煙機		DA429-6	-	✓	✓	-	✓	✓	✓	✓	✓	✓	✓	✓	✓	✓	-	✓	✓	-	✓	-	✓	✓	-	✓	✓
		DA422-6	✓	-	-	✓	-	-	-	-	-	-	-	-	-	✓	-	-	✓	-	✓	-	-	✓	-	-	
微波爐		M6032	✓	✓	✓	✓	✓	✓	✓	✓	✓	✓	✓	✓	✓	✓	✓	✓	✓	✓	✓	✓	✓	✓	✓	✓	
電蒸爐		DG6200	✓	✓	-	✓	✓	-	✓	✓	-	✓	✓	-	✓	✓	-	✓	✓	-	✓	✓	-	✓	✓	-	
洗衣/乾衣機		WT2789i WPM	✓	✓	✓	✓	✓	✓	✓	✓	✓	✓	✓	✓	✓	✓	✓	✓	✓	✓	✓	✓	✓	✓	✓	✓	
電焗爐		H2661B	✓	✓	✓	✓	✓	✓	✓	✓	✓	✓	✓	✓	✓	✓	✓	✓	✓	✓	✓	✓	✓	✓	✓	✓	
冷氣機	TRANE	4MWW3509FABAA/ 4TWK3509FABAA	✓	-	✓	-	✓	✓	✓	✓	✓	✓	✓	✓	-	✓	✓	-	✓	✓	✓	✓	✓	✓	✓	✓	
		4MWW3512FABAA/ 4TWK3512FABAA	✓	✓	-	-	-	-	✓	✓	-	-	-	-	-	✓	✓	-	-	✓	✓	✓	-	✓	✓	-	
		4MWW3518FABAA/ 4TWK3518FABAA	-	✓	✓	✓	✓	-	-	✓	✓	✓	✓	-	-	✓	✓	✓	✓	✓	-	-	✓	✓	✓	-	
		4MWW3524FABA/ 4TWK3524FABA	✓	✓	-	-	✓	✓	✓	✓	-	-	✓	✓	✓	✓	-	-	-	✓	✓	✓	✓	-	-	-	✓
		4MWW3526FABA/ 4TWK3526FABA	-	-	-	✓	✓	-	-	-	-	✓	✓	-	-	✓	-	✓	✓	-	✓	-	-	✓	✓	-	

賣方承諾，如發展項目中沒有安裝分別於第4(a)及6細項指明的品牌名稱或產品型號的升降機或設備，便會安裝品質相若的升降機或設備。

備註：住宅樓層不設4樓、13樓、14樓及24樓。

6. 設備			第一座						第二座						第三座						第五座					
			2樓-30樓			31樓			2樓-30樓			31樓			2樓-30樓			31樓			2樓-30樓			31樓		
設備	品牌名稱	產品型號	A	B	C	A	B	C	A	B	C	A	B	C	A	B	C	A	B	C	A	B	C	A	B	C
冷氣機	TRANE	4MCW3509FMBA/ 4TTS3509FMBA	-	-	-	-	-	-	-	-	-	-	-	-	✓	-	-	✓	-	-	-	-	-	-	-	-
		4MWW3509FABBA/ 4TWD3518FABAA	-	-	✓	-	-	-	-	-	✓	-	-	-	-	✓	-	-	-	-	-	-	✓	-	-	-
		4MWW3509FABBA/ 4MWW3512FABBA/ 4TWD3521FABAA	-	✓	-	✓	-	-	-	-	-	-	-	-	-	-	-	-	-	-	✓	-	-	-	-	-
		4MWW3512FABBA/ 4TWD3524FABAA	✓	-	-	-	-	✓	-	-	-	✓	-	✓	✓	-	-	✓	✓	-	-	-	-	✓	✓	✓
煤氣熱水爐	TGC	RJW221TFQL	✓	✓	✓	✓	✓	✓	✓	✓	✓	✓	✓	✓	✓	✓	✓	✓	✓	✓	✓	✓	✓	✓	✓	✓
抽氣扇	OSTBERG	LPK125A	✓	✓	✓	✓	✓	✓	✓	✓	✓	✓	✓	✓	✓	✓	✓	✓	✓	✓	✓	✓	✓	✓	✓	✓
	GELEC	VV180	-	-	✓	-	-	✓	-	-	✓	-	-	✓	-	✓	✓	-	✓	✓	-	-	✓	-	-	✓
	Mitsubishi Electric	V-15SL3T	-	✓	✓	-	✓	✓	✓	✓	-	✓	✓	-	✓	✓	✓	✓	✓	✓	✓	-	-	✓	-	-

賣方承諾，如發展項目中沒有安裝分別於第4(a)及6細項指明的品牌名稱或產品型號的升降機或設備，便會安裝品質相若的升降機或設備。

備註：住宅樓層不設4樓、13樓、14樓及24樓。

洋房

1. 外部裝修物料	
細項	描述
(a) 外牆	外牆鋪砌天然石、玻璃幕牆、鋁質飾面及鋁質護欄。
(b) 窗	所有窗戶選用鋁質窗框。 所有洋房的客廳、飯廳、睡房、廚房、天窗，以及10號洋房的儲物房、1樓樓梯及2樓樓梯採用雙層低輻射中空玻璃。
(c) 窗台	鋼筋混凝土窗台配以鋁質窗戶。 窗台板鋪砌天然石。
(d) 花槽	不適用
(e) 陽台或露台	不適用
(f) 乾衣設施	沒有
2. 室內裝修物料	
細項	描述
(a) 大堂	不適用
(b) 內牆及天花板	客廳、飯廳及睡房 所有洋房(10號洋房除外) 牆壁及天花均批盪後髹上乳膠漆至見光處，部份天花位置裝置髹上乳膠漆的石膏板。 10號洋房 - 客廳、飯廳、睡房1、2及3、主人睡房牆壁鋪貼牆紙。 - 客廳、飯廳、睡房1、2及3、主人睡房天花批盪後髹上乳膠漆至見光處，部份天花位置裝置髹上乳膠漆的石膏板及木製燈槽。
(c) 內部地板	客廳及飯廳 地台鋪砌天然石連木牆腳線。 睡房 地台鋪砌實木複合地板連木牆腳線。
(d) 浴室	浴室及化妝間 地台鋪砌天然石至見光處。 牆壁鋪砌天然石及鏡至假天花見光處。 天花裝置鋁質及髹上乳膠漆的石膏板假天花。 洗手間 地台鋪砌均質磚。

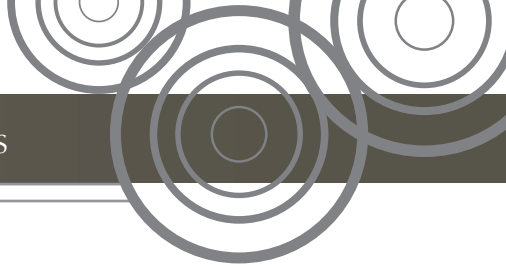
	牆壁鋪砌瓷磚至假天花見光處。 天花裝置鋁質假天花。
(e) 廚房	地台鋪砌天然石至見光處。 牆壁鋪砌天然石至假天花見光處。 天花裝置髹上乳膠漆的石膏板假天花。 灶台面選用天然石。
3. 室內裝置	
細項	描述
(a) 門	入口大門(室外門) 鋁框玻璃門，配門鎖及手柄。 入口大門(室內門) 實心木門配以木皮飾面，配門鎖及手柄、防盜眼、防盜鏈及氣鼓。 飯廳通往花園的門 鋁框玻璃門，配門鎖及手柄。 睡房門 空心木門配以木皮飾面，配門鎖及手柄。 浴室門及化妝間門 空心木門配以木皮飾面，配門鎖及手柄。 廚房門 實心木門配以木皮飾面，門身鑲有玻璃，並配氣鼓及手柄。 儲物房門 空心木門配以木皮飾面，配門鎖及手柄。 洗手間門 鋁框半透明玻璃門，配門鎖及手柄。 工作平台門 鋁框玻璃門，配門鎖及手柄。
(b) 浴室	浴室 配置鏡，木製洗面盆櫃配天然石枱面。 配置搪瓷坐廁、搪瓷洗面盆、鍍鉻洗面盆冷熱水龍頭、鍍鉻浴缸及淋浴花灑冷熱水龍頭連淋浴花灑套裝、鍍鉻毛巾架、鍍鉻毛巾環、鍍鉻掛衣鉤及鍍鉻廁紙架。 配置浴缸或淋浴間： - 瓷釉鋼鐵浴缸(1800毫米長 x 800毫米闊 x 430毫米高)及玻璃淋浴間於浴室3

	- 瓷釉鋼鐵浴缸(1800毫米長 x 750毫米闊 x 450毫米高)於浴室1及浴室2 提供膠面煤氣熱水爐遙控器。 供水系統的類型及用料見下文「供水」一欄。 化妝間 配置鏡，木製洗面盆櫃配天然石枱面。 配置搪瓷坐廁、搪瓷洗面盆、鍍鉻洗面盆冷熱水龍頭、鍍鉻毛巾環、鍍鉻掛衣鉤及鍍鉻廁紙架。 供水系統的類型及用料見下文「供水」一欄。 洗手間 配置鏡、搪瓷坐廁、搪瓷洗面盆、鍍鉻洗面盆冷熱水龍頭連手握淋浴花灑套裝及鍍鉻廁紙架。 供水系統的類型及用料見下文「供水」一欄。
(c) 廚房	選用木製廚櫃連玻璃飾面、亞加力飾面及木皮飾面門板、天然石枱面、不銹鋼洗滌盆及鍍鉻洗滌盆冷熱水龍頭。 供水系統的類型及用料見下文「供水」一欄。
(d) 睡房	所有洋房(10號洋房除外) 沒有 10號洋房 - 睡房1、2及主人睡房均裝置嵌入式木製衣櫃。
(e) 電話	電話插座之數目及位置，請參考「住宅單位機電裝置數量說明表」。
(f) 天線	電視/電台天線插座之數目及位置，請參考「住宅單位機電裝置數量說明表」。
(g) 電力裝置	客廳、飯廳、睡房、儲物房、廚房、浴室及花園均裝有安全電插座。導管部份隱藏、部份外露。除儲物房外，所有外露導管均隱藏於假天花、裝飾橫樑或廚櫃內。每戶均裝有包括漏電保護器的總電掣箱。有關電插座、接線電掣及空調機接駁點、抽氣扇開關掣之數目及位置，請參考「住宅單位機電裝置數量說明表」。
(h) 氣體供應	煤氣。氣體供應之系統及位置，請參考「住宅單位機電裝置數量說明表」。
(i) 洗衣機接駁點	洗衣機接駁點之位置及設計，請參考「住宅單位機電裝置數量說明表」。

(j) 供水	冷熱水喉管全部採用有膠層保護之銅喉。有熱水供應。浴室、洗手間、化妝間及廚房之熱水由煤氣熱水爐供應。水管部份隱藏、部份外露。所有外露喉管均安裝於假天花、裝飾橫樑、廚櫃內或安裝在洗面盆之下。
4. 雜項	
細項	描述
(a) 升降機	不適用
(b) 信箱	信箱用料為金屬。
(c) 垃圾收集	由清潔工人收集垃圾。地下設有垃圾及物料回收房中央處理所收集的垃圾。
(d) 水錶、電錶及氣體錶	每戶專用之獨立電錶及水錶裝設於電錶房及水錶房內。 所有洋房廚房內均預留位置安裝獨立煤氣錶。
5. 保安設施	裝有視像電話及搖控電閘裝置。 發展項目設有車輛管控系統。

賣方承諾，如發展項目中沒有安裝第6細項指明的品牌名稱或產品型號的設備，便會安裝品質相若的設備。

備註：不設4號洋房。



6. 設備			1-9號洋房	10號洋房
設備	品牌名稱	產品型號		
雪櫃	Miele	KF1911Vi	✓	✓
煤氣煮食爐		CS1018	✓	✓
電煮食爐		CS1212-li	✓	✓
迷你雪櫃		K9122Ui	✓	✓
抽油煙機		DA422-6	✓	✓
微波爐		M6032	✓	✓
電蒸爐		DG6401	✓	✓
洗衣機		W2819i	✓	✓
乾衣機		T4819Ci	✓	✓
酒櫃		KWT6321UG	✓	✓
電焗爐		H6260B	✓	✓
冷氣機	Mitsubishi Electric	PEFY-P50VMM-E1-SH	✓	✓
		PEFY-P63VMM-E1-SH	✓	✓
		PEFY-P80VMM-E1-SH	✓	✓
		PUHY-P500YSHA	✓	✓
煤氣熱水爐	TGC	RJW221TFQL	✓	✓
		NR32DQF	✓	-
抽氣扇	OSTBERG	LPK125A	✓	✓

賣方承諾，如發展項目中沒有安裝第6細項指明的品牌名稱或產品型號的設備，便會安裝品質相若的設備。

備註：不設4號洋房。

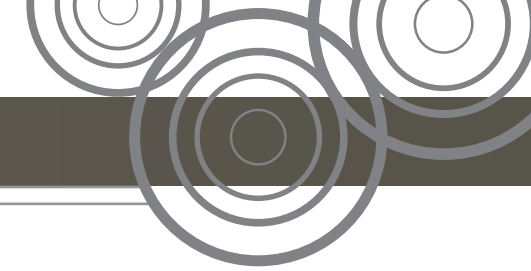
Towers

1. Exterior finishes	
Item	Description
(a) External wall	External Wall of Tower Finished with ceramic tiles, aluminium cladding, aluminium grille and curtain wall. External Wall of Podium Finished with ceramic tiles, aluminium cladding, aluminium grille, curtain wall and natural stone.
(b) Window	All windows are fitted with aluminium window frames. Clear glass for windows in Living Room, Dining Room, Bedroom and Maid Room. Clear glass for windows in Kitchen (except Tower 1 Flat A, Tower 1 Flat C and Tower 3 Flat C which are provided with translucent glass). Translucent glass for windows in Bathroom and Lavatory.
(c) Bay window	Reinforced concrete bay window fitted with aluminium window. Bay window sill is finished with natural stone.
(d) Planter	Not applicable.
(e) Verandah or Balcony	Balcony is covered. Balcony is fitted with clear glass balustrade with aluminium top rail and natural stone curb. Floor is finished with natural stone. Walls are finished with ceramic tiles. Ceiling is finished with aluminium panel. There is no verandah.
(f) Drying facilities for clothing	Nil
2. Interior finishes	
Item	Description
(a) Lobby	Residential Entrance Lobby Floor is finished with natural stone. Walls are finished with natural stone, timber, timber veneer, decorative mirror, stainless steel and glass panel to exposed surfaces. Ceiling is finished with gypsum board with emulsion paint. Residential Floor Lift Lobby Floor is finished with natural stone.

	Walls are finished with natural stone, decorative mirror, stainless steel and glass panel to exposed surfaces. Ceiling is finished with gypsum board with emulsion paint.
(b) Internal wall and ceiling	Living Room, Dining Room and Bedrooms <u>All Flats (except Flat B, 17/F, Tower 3, Flat B, 29/F, Tower 3 and Flat A, 10/F, Tower 5)</u> Walls and ceiling are plastered and painted with emulsion paint to exposed surfaces. Ceiling is partially finished with gypsum board with emulsion paint. <u>Flat B, 17/F, Tower 3</u> - Walls of Living Room and Dining Room are finished with wallpaper. - Walls of Master Bedroom, Bedrooms 1, 2 and 3 are partially finished with wallpaper, plastered and painted with emulsion paint to exposed surfaces. - Ceiling of Living Room, Dining Room, Master Bedroom, Bedrooms 1, 2 and 3 is plastered and painted with emulsion paint to exposed surfaces. Ceiling is partially finished with gypsum board and fitted with wooden light trough in emulsion paint finish. <u>Flat B, 29/F, Tower 3</u> - Walls of Living Room and Dining Room are finished with wallpaper, decorative mirror and natural stone. - Walls of Master Bedroom are finished with wallpaper, stainless steel plate and decorative mirror. - Walls of Bedroom 1 are finished with wallpaper and fabric padded panel. - Walls of Bedroom 2 are finished with wallpaper and timber veneer. - Walls of Bedroom 3 are finished with wallpaper and leather padded panel. - Ceiling of Living Room, Dining Room, Master Bedroom, Bedrooms 1, 2 and 3 is plastered and painted with emulsion paint to exposed surfaces. Ceiling is partially finished with gypsum board and fitted with wooden light trough in emulsion paint finish. <u>Flat A, 10/F, Tower 5</u> - Walls of Living Room and Dining Room are finished with wallpaper and stainless steel plate. - Walls of Master Bedroom are finished with wallpaper, stainless steel plate, decorative mirror, timber veneer and fabric padded panel.

	- Walls of Bedrooms 1 and 3 are finished with wallpaper, stainless steel plate and fabric padded panel. Walls of Bedroom 2 are finished with wallpaper. - Ceiling of Living Room, Dining Room, Master Bedroom and Bedrooms 1, 2 and 3 is plastered and painted with emulsion paint to exposed surface. Ceiling is partially finished with gypsum board and fitted with wooden light trough in emulsion paint finish.
(c) Internal floor	Living Room, Dining Room and Bedrooms <u>All Flats (except Flat B, 29/F, Tower 3 and Flat A, 10/F, Tower 5)</u> Floor is finished with engineered timber flooring with timber skirting. Natural stone floor border is provided to balcony doorway. <u>Flat B, 29/F, Tower 3</u> Living Room, Dining Room, Master Bedroom, Bedrooms 1, 2 and 3 Exposed floor surface is finished with natural stone with stainless steel finished timber skirting. <u>Flat A, 10/F, Tower 5</u> Living Room and Dining Room Exposed floor surface is finished with natural stone with stainless steel finished timber skirting. Master Bedroom, Bedrooms 1, 2 and 3 Exposed floor surface is finished with tiles with timber skirting.
(d) Bathroom	Bathroom <u>All Flats (except Bathroom 3 of Flat A, 10/F, Tower 5)</u> Floor is finished with natural stone to exposed surface. Walls are finished with natural stone, mother of pearl and mirror to exposed surfaces up to false ceiling level. Aluminium false ceiling and gypsum board false ceiling with emulsion paint are provided. <u>Bathroom 3 of Flat A, 10/F, Tower 5</u> Walls are partially finished with clear glass. Rest of wall finishes, floor and ceiling finishes are the same as standard provision. Lavatory Floor is finished with homogenous tiles. Walls are finished with ceramic tiles on exposed surfaces up to false ceiling level. Aluminium false ceiling is provided.
(e) Kitchen	Floor is finished with natural stone on exposed surface.

	<p>Walls are finished with natural stone and stainless steel panel on exposed surfaces up to false ceiling level.</p> <p>Aluminium false ceiling and gypsum board false ceiling with emulsion paint are provided.</p> <p>Cooking bench is finished with natural stone.</p>
3. Interior fittings	
Item	Description
(a) Doors	<p>Flat Entrance Door Solid core timber door finished with timber veneer, fitted with lockset and handle, door viewer, security door chain and door closer.</p> <p>Bedroom Door Hollow core timber door finished with timber veneer, fitted with lockset and handle.</p> <p>Bathroom Door All Flats (except Bathroom 2 of Tower 2 Flat C, Bathroom 1 of Flat B, 29/F, Tower 3, Bathroom 1 and 3 of Flat A, 10/F, Tower 5) Hollow core timber door finished with timber veneer, fitted with lockset and handle.</p> <p>Bathroom 2 of Tower 2 Flat C Translucent glass door, fitted with latch and knob.</p> <p>Bathroom 1 of Flat B, 29/F, Tower 3 Hollow core timber door finished with timber veneer and natural stone, fitted with lockset and handle.</p> <p>Bathroom 1 of Flat A, 10/F, Tower 5 Hollow core timber door finished with timber veneer, decorative mirror and stainless steel plate, fitted with lockset and handle.</p> <p>Bathroom 3 of Flat A, 10/F, Tower 5 Clear glass door, fitted with handle.</p> <p>Kitchen Door All Flats (except Flat A, 10/F, Tower 5) Solid core timber door finished with timber veneer, fitted with glass panel, door closer and handle.</p> <p>Flat A, 10/F, Tower 5 Solid core timber door finished with timber veneer, wallpaper and stainless steel plate, fitted with glass panel, door closer and handle.</p> <p>Store Door Tower 1 Flat B, Tower 1 Flat C, Tower 2 Flat A, Tower 3 Flat B and Tower 5 Flat A Aluminium slide-folded louvred door, fitted with lock.</p> <p>Tower 2 Flat B and Tower 3 Flat A Aluminium framed translucent glass door, fitted with lock and handle.</p>
	<p>Tower 2 Flat C Hollow core timber door finished with timber veneer, fitted with lockset and handle.</p> <p>Maid Room Door Tower 1 Flat A and Tower 3 Flat C Aluminium framed translucent glass door, fitted with lock and handle.</p> <p>Tower 5 Flat B Aluminium slide-folded louvred door, fitted with lock.</p> <p>Lavatory Door Tower 1 Flat A, Tower 2 Flat C and Tower 3 Flat A Hollow core timber door finished with timber veneer, fitted with lockset and handle.</p> <p>Tower 1 Flat B, Tower 1 Flat C, Tower 2 Flat A, Tower 3 Flat B and Tower 5 Flat A Aluminium framed translucent glass door, fitted with lock and handle.</p> <p>Tower 2 Flat B, Tower 3 Flat C and Tower 5 Flat B Translucent glass door, fitted with lock and handle.</p> <p>Balcony Door Aluminium framed glass door, fitted with lock and handle.</p> <p>Utility Platform Door and Terrace Door Aluminium framed glass door, fitted with lock and handle.</p>
(b) Bathroom	<p>Bathroom Fitted with mirror, wooden vanity cabinet with natural stone countertop.</p> <p>Fittings and equipment include vitreous china flushing water closet, vitreous china wash basin, chrome plated basin mixer, chrome plated bath/shower mixer and shower set, chrome plated towel rack, chrome plated towel ring, chrome plated robe hook and chrome plated paper holder.</p> <p>Fitted with bathtub or shower cubicle:-</p> <ul style="list-style-type: none"> Enamel steel bathtub with size of 1,800mm(L) x 750mm(W) x 450mm(H) at <ul style="list-style-type: none"> Bathroom 2 of all Flats Bathroom 1 of Tower 1 Flat A, Tower 3 Flat B, Tower 5 Flat A and Tower 5 Flat B Enamel steel bathtub with size of 1,500mm(L) x 750mm(W) x 430mm(H) at <ul style="list-style-type: none"> Bathroom 1 of Tower 1 Flat B, Tower 1 Flat C, Tower 2 Flat A, Tower 2 Flat B, Tower 2 Flat C, Tower 3 Flat A, Tower 3 Flat C and Tower 5 Flat C
	<ul style="list-style-type: none"> Glass shower cubicle at <ul style="list-style-type: none"> Bathroom 2 at Tower 1 Flat A, Tower 1 Flat B, Tower 2 Flat A, Tower 2 Flat B, Tower 3 Flat A, Tower 3 Flat B and Tower 5 Flat A Bathroom 2 at Tower 5 Flat B (25/F - 31/F only) Bathroom 3 at Tower 1 Flat A, Tower 3 Flat B and Tower 5 Flat A <p>Plastic finished remote controller for gas water heater is provided.</p> <p>See “Water Supply” below for type and material of water supply system.</p> <p>Lavatory Fitted with mirror, vitreous china flushing water closet, vitreous china wash basin, chrome plated basin mixer with hand shower set and chrome plated paper holder.</p> <p>See “Water Supply” below for type and material of water supply system.</p>
(c) Kitchen	<p>Fitted with wooden kitchen cabinet with aluminium finishing and timber veneer door panel, natural stone countertop, stainless steel sink and chrome plated sink mixer.</p> <p>See “Water Supply” below for type and material of water supply system.</p>
(d) Bedroom	<p>No fittings (for all Flats except Flat B, 17/F, Tower 3, Flat B, 29/F, Tower 3 and Flat A, 10/F, Tower 5).</p> <p>Flat B, 17/F, Tower 3 Master Bedroom, Bedrooms 1 and 2 are installed with built-in wooden wardrobe.</p> <p>Flat B, 29/F, Tower 3 Master Bedroom is installed with built-in wooden wardrobe and wooden shelves.</p> <p>Bedroom 1 and Bedroom 2 are installed with built-in wooden wardrobe.</p> <p>Bedroom 3 is installed with built-in wooden shelves and wooden cabinet.</p> <p>Flat A, 10/F, Tower 5 Master Bedroom and Bedroom 3 are installed with built-in wooden wardrobe and wooden desk.</p> <p>Bedroom 1 is installed with built-in wooden wardrobe.</p> <p>Bedroom 2 is installed with built-in wooden shelves.</p>
(e) Telephone	<p>For the number and the location of telephone outlet points, please refer to the “Schedule of Electrical & Mechanical Provisions for Residential Units”.</p>



(f) Aerials	For the number and the location of TV/FM outlet points, please refer to the “Schedule of Electrical & Mechanical Provisions for Residential Units”.
(g) Electrical installations	General-use socket outlets are provided in all living rooms, dining rooms, bedrooms, maid rooms, stores, kitchens and bathrooms. General-use socket outlets are provided in some flat roof and terrace. Conduits are concealed in part and exposed in part. All exposed conduits are enclosed in false ceilings, bulkheads or kitchen cabinets. MCB board completed with Residual Current Protection is provided for each flat. For the number and the location of socket outlets, fuse connection unit, air-conditioner points and switch for exhaust air fan, please refer to the “Schedule of Electrical & Mechanical Provisions for Residential Units”.
(h) Gas supply	Town Gas. Please refer to the “Schedule of Electrical & Mechanical Provisions for Residential Units” for the system and location of gas supply.
(i) Washing machines connection point	Please refer to the “Schedule of Electrical & Mechanical Provisions for Residential Units” for the location and design of the washing machine connection points.
(j) Water supply	PVC-coated copper pipes are provided for both hot and cold water. Hot water is available. Hot water supply to bathroom, lavatory and kitchen is provided by gas water heater. Water pipes are concealed in part and exposed in part. All exposed pipeworks are enclosed in false ceilings, bulkhead or kitchen cabinets or installed below wash basin.

4. Miscellaneous

Item	Description
(a) Lifts	<p>Chevalier “Toshiba” model ELBRIGHT (CL300W) passenger lifts are provided as follows:-</p> <p>Tower 1 - 2 Nos. of lifts serving Basement 2 to 31/F</p> <p>Tower 2 - 2 Nos. of lifts serving Basement 2 to 31/F</p> <p>Tower 3 - 2 Nos. of lifts serving Basement 2 to 31/F</p> <p>Tower 5 - 2 Nos. of lifts serving Basement 2 to 31/F</p> <p>Chevalier “Toshiba” model SPACEL-UNI (CV300) passenger lift is provided as follows:-</p> <p>- 1 No. of lift serving Basement 2 to 1/F</p>

(b) Letter box	The material of the letter box is metal.
(c) Refuse collection	Refuse Storage and Material Recovery Room is provided at all typical residential floors for collection of refuse by cleaners. Collected refuse is centrally handled at the Refuse Storage and Material Recovery Chamber located on Ground Floor.
(d) Water meter, electricity meter and gas meter	Separate meters for potable water and electricity are provided at public meter rooms / water meter cabinets. Town gas meter is provided in the kitchen of each unit.
5. Security facilities	<p>C.C.T.V. cameras are provided for main entrance lobby and all lifts. Octopus card for main entrance lobby access control.</p> <p>Vehicular control system is installed at the Development.</p>

The Vendor hereby undertakes that if lifts or appliances of the specified brand name or model number as stated respectively in items 4(a) and 6 are not installed in the Development, lifts or appliances of comparable quality will be installed.

Remark: Residential floors 4/F, 13/F, 14/F and 24/F are omitted.

6.Appliances			Tower 1						Tower 2						Tower 3						Tower 5						
			2nd Floor - 30/F			31/F			2nd Floor - 30/F			31/F			2nd Floor - 30/F			31/F			2nd Floor - 30/F			31/F			
Appliance	Brand Name	Model Number	A	B	C	A	B	C	A	B	C	A	B	C	A	B	C	A	B	C	A	B	C	A	B	C	
Refrigerator	Miele	KFNS37232iD	✓	✓	✓	✓	✓	✓	✓	✓	✓	✓	✓	✓	✓	✓	✓	✓	✓	✓	✓	✓	✓	✓	✓	✓	
Gas Hob		CS1018	✓	✓	✓	✓	✓	✓	✓	✓	✓	✓	✓	✓	✓	✓	✓	✓	✓	✓	✓	✓	✓	✓	✓	✓	
Induction Cooker		CS1212-1i	✓	✓	✓	✓	✓	✓	✓	✓	✓	✓	✓	✓	✓	✓	✓	✓	✓	✓	✓	✓	✓	✓	✓	✓	
Mini Refrigerator		K9122Ui	✓	-	-	✓	-	-	-	-	-	-	-	-	-	✓	-	-	✓	-	✓	-	-	✓	-	-	
Cooker Hood		DA429-6	-	✓	✓	-	✓	✓	✓	✓	✓	✓	✓	✓	✓	✓	-	✓	✓	-	✓	-	✓	✓	-	✓	✓
		DA422-6	✓	-	-	✓	-	-	-	-	-	-	-	-	-	✓	-	-	✓	-	✓	-	-	✓	-	-	
Microwave Oven		M6032	✓	✓	✓	✓	✓	✓	✓	✓	✓	✓	✓	✓	✓	✓	✓	✓	✓	✓	✓	✓	✓	✓	✓	✓	
Steamer		DG6200	✓	✓	-	✓	✓	-	✓	✓	-	✓	✓	-	✓	✓	-	✓	✓	-	✓	✓	-	✓	✓	-	
Washer/Dryer		WT2789i WPM	✓	✓	✓	✓	✓	✓	✓	✓	✓	✓	✓	✓	✓	✓	✓	✓	✓	✓	✓	✓	✓	✓	✓	✓	
Electric Oven		H2661B	✓	✓	✓	✓	✓	✓	✓	✓	✓	✓	✓	✓	✓	✓	✓	✓	✓	✓	✓	✓	✓	✓	✓	✓	
Air-conditioner	TRANE	4MWW3509FABAA/ 4TWK3509FABAA	✓	-	✓	-	✓	✓	✓	✓	✓	✓	✓	✓	-	✓	✓	-	✓	✓	✓	✓	✓	✓	✓	✓	
		4MWW3512FABAA/ 4TWK3512FABAA	✓	✓	-	-	-	-	✓	✓	-	-	-	-	-	✓	✓	-	-	✓	✓	✓	-	✓	✓	-	
		4MWW3518FABAA/ 4TWK3518FABAA	-	✓	✓	✓	✓	-	-	✓	✓	✓	✓	-	-	✓	✓	✓	✓	✓	-	-	✓	✓	✓	-	
		4MWW3524FABA/ 4TWK3524FABA	✓	✓	-	-	✓	✓	✓	✓	-	-	✓	✓	✓	-	-	-	✓	✓	✓	✓	-	-	-	✓	
		4MWW3526FABA/ 4TWK3526FABA	-	-	-	✓	✓	-	-	-	-	✓	✓	-	-	✓	-	✓	✓	-	✓	-	-	✓	✓	-	

The Vendor hereby undertakes that if lifts or appliances of the specified brand name or model number as stated respectively in items 4(a) and 6 are not installed in the Development, lifts or appliances of comparable quality will be installed.

Remark: Residential floors 4/F, 13/F, 14/F and 24/F are omitted.

6.Appliances			Tower 1						Tower 2						Tower 3						Tower 5					
			2nd Floor - 30/F			31/F			2nd Floor - 30/F			31/F			2nd Floor - 30/F			31/F			2nd Floor - 30/F			31/F		
Appliance	Brand Name	Model Number	A	B	C	A	B	C	A	B	C	A	B	C	A	B	C	A	B	C	A	B	C	A	B	C
Air-conditioner	TRANE	4MCW3509FMBA/ 4TTS3509FMBA	-	-	-	-	-	-	-	-	-	-	-	-	✓	-	-	✓	-	-	-	-	-	-	-	-
		4MWW3509FABBA/ 4TWD3518FABAA	-	-	✓	-	-	-	-	-	✓	-	-	-	-	✓	-	-	-	-	-	-	✓	-	-	-
		4MWW3509FABBA/ 4MWW3512FABBA/ 4TWD3521FABAA	-	✓	-	✓	-	-	-	-	-	-	-	-	-	-	-	-	-	-	✓	-	-	-	-	-
		4MWW3512FABBA/ 4TWD3524FABAA	✓	-	-	-	-	✓	-	-	-	✓	-	✓	✓	-	-	✓	✓	-	-	-	-	✓	✓	✓
Gas Water Heater	TGC	RJW221TFQL	✓	✓	✓	✓	✓	✓	✓	✓	✓	✓	✓	✓	✓	✓	✓	✓	✓	✓	✓	✓	✓	✓	✓	✓
Exhaust Fan	OSTBERG	LPK125A	✓	✓	✓	✓	✓	✓	✓	✓	✓	✓	✓	✓	✓	✓	✓	✓	✓	✓	✓	✓	✓	✓	✓	✓
	GELEC	VV180	-	-	✓	-	-	✓	-	-	✓	-	-	✓	-	✓	✓	-	✓	✓	-	-	✓	-	-	✓
	Mitsubishi Electric	V-15SL3T	-	✓	✓	-	✓	✓	✓	✓	-	✓	✓	-	✓	✓	✓	✓	✓	✓	✓	-	-	✓	-	-

The Vendor hereby undertakes that if lifts or appliances of the specified brand name or model number as stated respectively in items 4(a) and 6 are not installed in the Development, lifts or appliances of comparable quality will be installed.

Remark: Residential floors 4/F, 13/F, 14/F and 24/F are omitted.

House

1. Exterior finishes	
Item	Description
(a) External wall	Finished with natural stone, curtain wall, aluminium cladding and aluminium grille.
(b) Window	All windows are fitted with aluminium window frames. Double glazed low-emissivity glass for window in - Living Room, Dining Room, Bedrooms, Kitchen and Skylight of all Houses - Store and Stair on 1st Floor and 2nd Floor of House No.10
(c) Bay window	Reinforced concrete bay window fitted with aluminium window. Bay window sill is finished with natural stone.
(d) Planter	Not applicable.
(e) Verandah or Balcony	Not applicable.
(f) Drying facilities for clothing	Nil
2. Interior finishes	
Item	Description
(a) Lobby	Not applicable
(b) Internal wall and ceiling	Living Room, Dining Room and Bedrooms <u>All Houses (except House No.10)</u> Walls and ceiling are plastered and painted with emulsion paint to exposed surfaces. Ceiling is partially finished with gypsum board with emulsion paint. <u>House No.10</u> - Walls of Living Room, Dining Room, Bedroom 1, 2 and 3, Master Bedroom are finished with wallpaper. - Ceiling of Living Room, Dining Room, Bedroom 1, 2 and 3, Master Bedroom is plastered and painted with emulsion paint to exposed surface. Ceiling is partially finished with gypsum board and fitted with wooden light trough in emulsion paint finish.
(c) Internal floor	Living Room and Dining Room Floor is finished with natural stone with timber skirting.

	Bedrooms Floor is finished with engineered timber flooring with timber skirting.
(d) Bathroom	Bathroom and Powder Room Floor is finished with natural stone to exposed surface. Walls are finished with natural stone and mirror on exposed surfaces up to false ceiling level. Aluminium false ceiling and gypsum board false ceiling with emulsion paint are provided. Lavatory Floor is finished with homogenous tiles. Walls are finished with ceramic tiles on exposed surfaces up to false ceiling level. Aluminium false ceiling is provided.
(e) Kitchen	Floor is finished with natural stone on exposed surface. Walls are finished with natural stone on exposed surfaces up to false ceiling level. Gypsum board false ceiling with emulsion paint is provided. Cooking bench is finished with natural stone.
3. Interior fittings	
Item	Description
(a) Doors	Entrance Door (Exterior Door) Aluminium framed glass door, fitted with lockset and handle. Entrance Door (Interior Door) Solid core timber door finished with timber veneer, fitted with lockset and handle, door viewer, security door chain and door closer. Passage Door connecting Dining Room to Garden Aluminium framed glass door, fitted with handle and lock. Bedroom Door Hollow core timber door finished with timber veneer, fitted with lockset and handle. Bathroom Door and Powder Room Door Hollow core timber door finished with timber veneer, fitted with lockset and handle. Kitchen Door Solid core timber door finished with timber veneer, fitted with glass panel, door closer and handle.

	Store Door Hollow core timber door finished with timber veneer, fitted with lockset and handle. Lavatory Door Aluminium framed translucent glass door, fitted with lock and handle. Utility Platform Door Aluminium framed glass door, fitted with lock and handle.
(b) Bathroom	Bathroom Fitted with mirror, wooden vanity cabinet with natural stone countertop. Fittings and equipment include vitreous china flushing water closet, vitreous china wash basin, chrome plated basin mixer, chrome plated bath/shower mixer and shower set, chrome plated towel rack, chrome plated towel ring, chrome plated robe hook and chrome plated paper holder. Fitted with bathtub or shower cubicle:- • Enamel steel bathtub with size of 1,800mm(L) x 800mm(W) x 430mm(H) and glass shower cubicle at Bathroom 3 • Enamel steel bathtub with size of 1,800mm(L) x 750mm(W) x 450mm(H) at Bathroom 1 and Bathroom 2 Plastic finished remote controller for water heater is provided. See “Water Supply” below for type and material of water supply system. Powder Room Fitted with mirror, wooden vanity cabinet with natural stone countertop. Fittings and equipment include vitreous china flushing water closet, vitreous china wash basin, chrome plated basin mixer, chrome plated towel ring, chrome plated robe hook and chrome plated paper holder. See “Water Supply” below for type and material of water supply system. Lavatory Fitted with mirror, vitreous china flushing water closet, vitreous china wash basin, chrome plated basin mixer with hand shower set and chrome plated paper holder. See “Water Supply” below for type and material of water supply system.

(c) Kitchen	Fitted with wooden kitchen cabinet fitted with glass panel, acrylic finishing and timber veneer door panel, natural stone countertop, stainless steel sink and chrome plated sink mixer. See “Water Supply” below for type and material of water supply system.
(d) Bedroom	<u>All Houses (except House No.10)</u> Nil. <u>House No.10</u> - Bedroom 1, 2 and Master Bedroom are installed with built-in wooden wardrobe.
(e) Telephone	For the number and the location of telephone outlet points, please refer to the “Schedule of Electrical & Mechanical Provisions for Residential Units”.
(f) Aerials	For the number and the location of TV/FM outlet point, please refer to the “Schedule of Electrical & Mechanical Provisions for Residential Units”.
(g) Electrical installations	General-use socket outlets are provided in all living rooms, dining rooms, bedrooms, stores, kitchens, bathrooms and gardens. Conduits are concealed in part and exposed in part. Except in stores, all exposed conduits are enclosed in false ceilings, bulkheads or kitchen cabinets. MCB board completed with Residual Current Protection is provided for each House. For the number and the location of socket outlets, fuse connection unit, air-conditioner points and switch for exhaust air fan, please refer to the “Schedule of Electrical & Mechanical Provisions for Residential Units”.
(h) Gas supply	Town Gas. Please refer to the “Schedule of Electrical & Mechanical Provisions for Residential Units” for the system and location of gas supply.
(i) Washing machine connection point	Please refer to the “Schedule of Electrical & Mechanical Provisions for Residential Units” for the location and design of the washing machine connection points.
(j) Water supply	PVC-coated copper pipes are provided for both hot and cold water. Hot water is available. Hot water supply to bathroom, lavatory, powder room and kitchen is provided by gas water heater. Water pipes are concealed in part and exposed in part. All exposed pipeworks are enclosed in false ceilings, bulkhead or kitchen cabinets or installed below wash basin.

4. Miscellaneous	
Item	Description
(a) Lifts	Not applicable
(b) Letter box	The material of the letter box is metal.
(c) Refuse collection	Refuse will be collected by cleaners. Collected refuse is centrally handled at the Refuse Storage and Material Recovery Chamber located on Ground Floor.
(d) Water meter, electricity meter and gas meter	Separate meters for potable water and electricity are provided at public meter rooms / water meter cabinets. Space for town gas meter is provided in the kitchen of each House.
5. Security facilities	
	Video door phone and remote control gate are provided. Vehicular control system is installed at the Development.

The Vendor hereby undertakes that if appliances of the specified brand name or model number as stated in item 6 are not installed in the Development, appliances of comparable quality will be installed.

Remark: House No. 4 is omitted.

6.Appliances			House Nos. 1 - 9	House No.10
Appliance	Brand Name	Model Number		
Refrigerator	Miele	KF1911Vi	✓	✓
Gas Hob		CS1018	✓	✓
Induction Cooker		CS1212-1i	✓	✓
Mini Refrigerator		K9122Ui	✓	✓
Cooker Hood		DA422-6	✓	✓
Microwave Oven		M6032	✓	✓
Steamer		DG6401	✓	✓
Washer		W2819i	✓	✓
Dryer		T4819Ci	✓	✓
Wine Cellar		KWT6321UG	✓	✓
Electric Oven		H6260B	✓	✓
Air-conditioner	Mitsubishi Electric	PEFY-P50VMM-E1-SH	✓	✓
		PEFY-P63VMM-E1-SH	✓	✓
		PEFY-P80VMM-E1-SH	✓	✓
		PUHY-P500YSHA	✓	✓
Gas Water Heater	TGC	RJW221TFQL	✓	✓
		NR32DQF	✓	-
Exhaust Fan	OSTBERG	LPK125A	✓	✓

The Vendor hereby undertakes that if appliances of the specified brand name or model number as stated item 6 are not installed in the Development, appliances of comparable quality will be installed.

Remark: House No. 4 is omitted.

住宅單位機電裝置數量說明表 SCHEDULE OF ELECTRICAL & MECHANICAL PROVISIONS FOR RESIDENTIAL UNITS

第1座 TOWER 1	單位 Flat	A	B	C	A	B	C	A	B	C	A	B	C
	樓層 Floor	2樓 2nd Floor			3樓至15樓 3/F - 15/F			16樓至30樓 16/F - 30/F			31樓 31/F		
大門入口 Main Entrance	門鈴 Door Bell Push Button	1	1	1	1	1	1	1	1	1	1	1	1
客飯廳及走廊 Living Room / Dining Room and Corridor	空調機室內機接駁點 Air-conditioner point for A/C Indoor Unit	2	2	2	2	2	2	2	2	2	2	2	2
	13A雙位電插座 13A Twin Socket Outlet	3	3	3	3	3	3	3	3	3	3	3	3
	電視/電台天線插座 TV/FM Outlet	2	2	2	2	2	2	2	2	2	2	2	2
	電話插座 Telephone Outlet	2	2	2	2	2	2	2	2	2	2	2	2
	抽氣扇開關掣 On/Off Switch for Exhaust Fan	2	2	2	2	2	2	2	2	2	2	2	2
	燈位 Lighting Point	5	4	4	5	4	4	5	4	4	5	4	4
	燈掣 Lighting Switch	8	8	9	8	8	9	8	8	9	8	8	9
	總電掣箱 Miniature Circuit Breakers Board	0	0	1	0	0	1	0	0	1	0	0	1
主人睡房 Master Bedroom	空調機室內機接駁點 Air-conditioner point for A/C Indoor Unit	1	1	1	1	1	1	1	1	1	2	1	1
	13A雙位電插座 13A Twin Socket Outlet	2	2	1	2	2	1	2	2	2	2	2	2
	13A單位電插座 13A Single Socket Outlet	0	0	2	0	0	2	0	0	0	0	0	0
	電視/電台天線插座 TV/FM Outlet	1	1	1	1	1	1	1	1	1	1	1	1
	電話插座 Telephone Outlet	1	1	1	1	1	1	1	1	1	1	1	1
	抽氣扇開關掣 On/Off Switch for Exhaust Fan	1	1	1	1	1	1	1	1	1	1	1	1
	燈位 Lighting Point	2	1	1	2	1	1	2	1	1	2	1	1
	燈掣 Lighting Switch	4	3	4	4	3	4	4	3	4	4	3	4
睡房 1 Bedroom 1	空調機室內機接駁點 Air-conditioner point for A/C Indoor Unit	1	1	1	1	1	1	1	1	1	1	1	1
	13A雙位電插座 13A Twin Socket Outlet	2	2	2	2	2	2	2	2	2	2	2	2
	電視/電台天線插座 TV/FM Outlet	1	1	1	1	1	1	1	1	1	1	1	1
	電話插座 Telephone Outlet	1	1	1	1	1	1	1	1	1	1	1	1
	抽氣扇開關掣 On/Off Switch for Exhaust Fan	1	0	0	1	0	0	1	0	0	1	0	0
	燈位 Lighting Point	1	1	1	1	1	1	1	1	1	1	1	1
	燈掣 Lighting Switch	3	1	1	3	1	1	3	1	1	3	1	1
睡房 2 Bedroom 2	空調機室內機接駁點 Air-conditioner point for A/C Indoor Unit	1	1	1	1	1	1	1	1	1	1	1	1
	13A雙位電插座 13A Twin Socket Outlet	2	2	2	2	2	2	2	2	2	2	2	2
	電視/電台天線插座 TV/FM Outlet	1	1	1	1	1	1	1	1	1	1	1	1
	電話插座 Telephone Outlet	1	1	1	1	1	1	1	1	1	1	1	1
	燈位 Lighting Point	1	1	1	1	1	1	1	1	1	1	1	1
	燈掣 Lighting Switch	1	1	1	1	1	1	1	1	1	1	1	1
睡房 3 Bedroom 3	空調機室內機接駁點 Air-conditioner point for A/C Indoor Unit	1	不適用 N/A	不適用 N/A	1	不適用 N/A	不適用 N/A	1	不適用 N/A	不適用 N/A	1	不適用 N/A	不適用 N/A
	13A雙位電插座 13A Twin Socket Outlet	2			2			2			2		
	電視/電台天線插座 TV/FM Outlet	1			1			1			1		
	電話插座 Telephone Outlet	1			1			1			1		
	燈位 Lighting Point	1			1			1			1		
	燈掣 Lighting Switch	2			1			1			1		

備註：住宅樓層不設4樓、13樓、14樓及24樓。 Remark: Residential floors 4/F, 13/F, 14/F and 24/F are omitted.

住宅單位機電裝置數量說明表 SCHEDULE OF ELECTRICAL & MECHANICAL PROVISIONS FOR RESIDENTIAL UNITS

第1座 TOWER 1	單位 Flat	A	B	C	A	B	C	A	B	C	A	B	C
	樓層 Floor	2樓 2nd Floor			3樓至15樓 3/F - 15/F			16樓至30樓 16/F - 30/F			31樓 31/F		
浴室 1 Bathroom 1	煤氣熱水爐溫度控制 Town Gas Water Heater Remote Control	1	1	1	1	1	1	1	1	1	1	1	1
	抽氣扇 Exhaust Fan	0	1	1	0	1	1	0	1	1	0	1	1
	裝有熔斷器接線電掣 Fused Connection Unit	1	2	2	1	2	2	1	2	2	1	2	2
	13A單位電插座 13A Single Socket Outlet	1	1	1	1	1	1	1	1	1	1	1	1
	燈位 Lighting Point	3	3	3	3	3	3	3	3	3	3	3	3
浴室 2 Bathroom 2	煤氣熱水爐溫度控制 Town Gas Water Heater Remote Control	1	1	1	1	1	1	1	1	1	1	1	1
	抽氣扇 Exhaust Fan	1	1	1	1	1	1	1	1	1	1	1	1
	裝有熔斷器接線電掣 Fused Connection Unit	4	2	2	4	2	2	4	2	2	4	2	2
	13A單位電插座 13A Single Socket Outlet	1	1	1	1	1	1	1	1	1	1	1	1
	燈位 Lighting Point	7	7	5	7	7	5	7	7	5	7	7	5
浴室 3 Bathroom 3	煤氣熱水爐溫度控制 Town Gas Water Heater Remote Control	1	不適用 N/A	不適用 N/A	1	不適用 N/A	不適用 N/A	1	不適用 N/A	不適用 N/A	1	不適用 N/A	不適用 N/A
	抽氣扇 Exhaust Fan	1			1			1			1		
	裝有熔斷器接線電掣 Fused Connection Unit	2			2			2			2		
	13A單位電插座 13A Single Socket Outlet	1			1			1			1		
	燈位 Lighting Point	3			3			3			3		
洗手間 Lavatory	煤氣熱水爐 Town Gas Water Heater	0	1	1	0	1	1	0	1	1	0	1	1
	熱水爐煤氣接駁點 Town Gas Connection Point For Water Heater	0	1	1	0	1	1	0	1	1	0	1	1
	抽氣扇 Exhaust Fan	0	1	1	0	1	1	0	1	1	0	1	1
	裝有熔斷器接線電掣 Fused Connection Unit	0	2	2	0	2	2	0	2	2	0	2	2
	13A單位電插座 13A Single Socket Outlet	0	0	0	0	0	0	0	0	0	0	0	0
	抽氣扇開關掣 On/Off Switch for Exhaust Fan	0	1	0	0	1	0	0	1	0	0	1	0
	燈位 Lighting Point	1	1	1	1	1	1	1	1	1	1	1	1
	燈掣 Lighting Switch	0	1	0	0	1	0	0	1	0	0	1	0
廚房 Kitchen	總食水掣位 Main Water Supply Valve	1	1	1	1	1	1	1	1	1	1	1	1
	洗衣機接駁點(來水位，設計為直徑22毫米) Washing Machine Connection Point (Water Inlet of a design of 22mm in diameter)	1	1	1	1	1	1	1	1	1	1	1	1
	洗衣機接駁點(去水位，設計為直徑40毫米) Washing Machine Connection Point (Water Outlet of a design of 40mm in diameter)	1	1	1	1	1	1	1	1	1	1	1	1
	煤氣熱水爐 Town Gas Water Heater	2	1	0	2	1	0	2	1	0	2	1	0
	煮食爐煤氣接駁點 Town Gas Connection Point For Gas Hob	2	1	1	2	1	1	2	1	1	2	1	1
	熱水爐煤氣接駁點 Town Gas Connection Point For Water Heater	2	1	0	2	1	0	2	1	0	2	1	0
	抽氣扇 Exhaust Fan	1	1	1	1	1	1	1	1	1	1	1	1
	裝有熔斷器接線電掣 Fused Connection Unit	7	5	4	7	5	4	7	5	4	7	5	4
	接線電掣 Connection Unit	3	3	2	3	3	2	3	3	2	3	3	2
	13A雙位電插座 13A Twin Socket Outlet	2	2	2	2	2	2	2	2	2	2	2	2
	13A單位電插座 13A Single Socket Outlet	4	3	3	4	3	3	4	3	3	4	3	3
	燈位 Lighting Point	3	4	3	3	4	3	3	4	3	3	4	3
	門鐘 Door Bell	1	1	1	1	1	1	1	1	1	1	1	1
	總電掣箱 Miniature Circuit Breakers Board	1	0	0	1	0	0	1	0	0	1	0	0

備註：住宅樓層不設4樓、13樓、14樓及24樓。 Remark: Residential floors 4/F, 13/F, 14/F and 24/F are omitted.

住宅單位機電裝置數量說明表 SCHEDULE OF ELECTRICAL & MECHANICAL PROVISIONS FOR RESIDENTIAL UNITS

第1座 TOWER 1	單位 Flat	A	B	C	A	B	C	A	B	C	A	B	C
	樓層 Floor	2樓 2nd Floor			3樓至15樓 3/F - 15/F			16樓至30樓 16/F - 30/F			31樓 31/F		
工人房 Maid Room	空調機室內機接駁點 Air-conditioner point for A/C Indoor Unit	1	不適用 N/A	不適用 N/A	1	不適用 N/A	不適用 N/A	1	不適用 N/A	不適用 N/A	1	不適用 N/A	不適用 N/A
	抽氣扇 Exhaust Fan	2			2			2			2		
	裝有熔斷器接線電掣 Fused Connection Unit	2			2			2			2		
	13A雙位電插座 13A Twin Socket Outlet	1			1			1			1		
	抽氣扇開關掣 On/Off Switch for Exhaust Fan	1			1			1			1		
	燈位 Lighting Point	1			1			1			1		
	燈掣 Lighting Switch	2			2			2			2		
儲物房 Store Room	空調機室內機接駁點 Air-conditioner point for A/C Indoor Unit	不適用 N/A	1	1	不適用 N/A	1	1	不適用 N/A	1	1	不適用 N/A	1	1
	13A單位電插座 13A Single Socket Outlet		1	1		1	1		1	1		1	1
	燈位 Lighting Point		1	1		1	1		1	1		1	1
	燈掣 Lighting Switch		1	1		1	1		1	1		1	1
	總電掣箱 Miniature Circuit Breakers Board		1	0		1	0		1	0		1	0
露台 Balcony	燈位 Lighting Point	1	1	0	1	1	1	1	1	1	1	1	1
工作平台 Utility Platform	抽氣扇開關掣 On/Off Switch for Exhaust Fan	0	0	1	0	0	1	0	0	1	0	0	1
	燈位 Lighting Point	1	1	1	1	1	1	1	1	1	1	1	1
	燈掣 Lighting Switch	0	0	1	0	0	1	0	0	1	0	0	1
平台 Flat Roof	13A單位電插座 13A Single Socket Outlet	不適用 N/A	不適用 N/A	不適用 N/A	不適用 N/A	不適用 N/A	不適用 N/A	不適用 N/A	不適用 N/A	不適用 N/A	1	1	不適用 N/A
	燈位 Lighting Point										5	3	
	燈掣 Lighting Switch										1	1	
公用平台 Common Flat Roof	空調機室外機接駁點 Air-conditioner point for A/C Outdoor Unit	0	3	4	不適用 N/A	不適用 N/A	不適用 N/A	不適用 N/A	不適用 N/A	不適用 N/A	不適用 N/A	不適用 N/A	不適用 N/A
前庭 Terrace	13A單位電插座 13A Single Socket Outlet	1	不適用 N/A	1	不適用 N/A	不適用 N/A	不適用 N/A	不適用 N/A	不適用 N/A	不適用 N/A	不適用 N/A	不適用 N/A	不適用 N/A
	燈位 Lighting Point	1		1									
	空調機室外機接駁點 Air-conditioner point for A/C Outdoor Unit	5		0									
冷氣機平台 A/C Platform	空調機室外機接駁點 Air-conditioner point for A/C Outdoor Unit	0	0	0	5	3	4	5	3	4	6	4	5
窗台頂 (工人房) Top of Bay Window (Maid Room)	空調機室外機接駁點 Air-conditioner point for A/C Outdoor Unit	1	0	0	1	0	0	1	0	0	1	0	0
窗台頂 (睡房 2) Top of Bay Window (Bedroom 2)	空調機室外機接駁點 Air-conditioner point for A/C Outdoor Unit	0	2	1	0	2	1	0	2	1	0	2	1

備註：住宅樓層不設4樓、13樓、14樓及24樓。 Remark: Residential floors 4/F, 13/F, 14/F and 24/F are omitted.

住宅單位機電裝置數量說明表 SCHEDULE OF ELECTRICAL & MECHANICAL PROVISIONS FOR RESIDENTIAL UNITS

第2座 TOWER 2	單位 Flat	A	B	C	A	B	C	A	B	C	A	B	C
	樓層 Floor	2樓 2nd Floor			3樓至15樓 3/F - 15/F			16樓至30樓 16/F - 30/F			31樓 31/F		
大門入口 Main Entrance	門鈴 Door Bell Push Button	1	1	1	1	1	1	1	1	1	1	1	1
客飯廳及走廊 Living Room / Dining Room and Corridor	空調機室內機接駁點 Air-conditioner point for A/C Indoor Unit	2	2	2	2	2	2	2	2	2	2	2	2
	13A雙位電插座 13A Twin Socket Outlet	3	3	3	3	3	3	3	3	3	3	3	3
	電視/電台天線插座 TV/FM Outlet	2	2	2	2	2	2	2	2	2	2	2	2
	電話插座 Telephone Outlet	2	2	2	2	2	2	2	2	2	2	2	2
	抽氣扇開關掣 On/Off Switch for Exhaust Fan	2	2	2	2	2	2	2	2	2	2	2	2
	燈位 Lighting Point	4	4	4	4	4	4	4	4	4	4	4	4
	燈掣 Lighting Switch	8	8	8	8	8	8	8	8	8	8	8	8
主人睡房 Master Bedroom	空調機室內機接駁點 Air-conditioner point for A/C Indoor Unit	1	1	1	1	1	1	1	1	1	2	1	1
	13A雙位電插座 13A Twin Socket Outlet	2	2	2	2	2	2	2	2	2	2	2	2
	電視/電台天線插座 TV/FM Outlet	1	1	1	1	1	1	1	1	1	1	1	1
	電話插座 Telephone Outlet	1	1	1	1	1	1	1	1	1	1	1	1
	抽氣扇開關掣 On/Off Switch for Exhaust Fan	1	1	1	1	1	1	1	1	1	1	1	1
	燈位 Lighting Point	2	1	1	2	1	1	2	1	1	2	1	1
	燈掣 Lighting Switch	5	3	4	5	3	4	5	3	4	5	3	4
睡房 1 Bedroom 1	空調機室內機接駁點 Air-conditioner point for A/C Indoor Unit	1	1	1	1	1	1	1	1	1	1	1	1
	13A雙位電插座 13A Twin Socket Outlet	2	2	2	2	2	2	2	2	2	2	2	2
	電視/電台天線插座 TV/FM Outlet	1	1	1	1	1	1	1	1	1	1	1	1
	電話插座 Telephone Outlet	1	1	1	1	1	1	1	1	1	1	1	1
	燈位 Lighting Point	1	1	1	1	1	1	1	1	1	1	1	1
	燈掣 Lighting Switch	1	1	1	1	1	1	1	1	1	1	1	1
睡房 2 Bedroom 2	空調機室內機接駁點 Air-conditioner point for A/C Indoor Unit	1	1	1	1	1	1	1	1	1	1	1	1
	13A雙位電插座 13A Twin Socket Outlet	2	2	2	2	2	2	2	2	2	2	2	2
	電視/電台天線插座 TV/FM Outlet	1	1	1	1	1	1	1	1	1	1	1	1
	電話插座 Telephone Outlet	1	1	1	1	1	1	1	1	1	1	1	1
	燈位 Lighting Point	1	1	1	1	1	1	1	1	1	1	1	1
	燈掣 Lighting Switch	1	1	1	1	1	1	1	1	1	1	1	1

備註：住宅樓層不設4樓、13樓、14樓及24樓。 Remark: Residential floors 4/F, 13/F, 14/F and 24/F are omitted.

住宅單位機電裝置數量說明表 SCHEDULE OF ELECTRICAL & MECHANICAL PROVISIONS FOR RESIDENTIAL UNITS

第2座 TOWER 2	單位 Flat	A	B	C	A	B	C	A	B	C	A	B	C
	樓層 Floor	2樓 2nd Floor			3樓至15樓 3/F - 15/F			16樓至30樓 16/F - 30/F			31樓 31/F		
浴室 1 Bathroom 1	煤氣熱水爐溫度控制 Town Gas Water Heater Remote Control	1	1	1	1	1	1	1	1	1	1	1	1
	裝有熔斷器接線電掣 Fused Connection Unit	1	1	1	1	1	1	1	1	1	1	1	1
	13A單位電插座 13A Single Socket Outlet	1	1	1	1	1	1	1	1	1	1	1	1
	燈位 Lighting Point	3	3	3	3	3	3	3	3	3	3	3	3
浴室 2 Bathroom 2	煤氣熱水爐溫度控制 Town Gas Water Heater Remote Control	1	1	1	1	1	1	1	1	1	1	1	1
	抽氣扇 Exhaust Fan	1	1	1	1	1	1	1	1	1	1	1	1
	裝有熔斷器接線電掣 Fused Connection Unit	2	2	2	2	2	2	2	2	2	2	2	2
	13A單位電插座 13A Single Socket Outlet	1	1	1	1	1	1	1	1	1	1	1	1
	燈位 Lighting Point	7	7	5	7	7	5	7	7	5	7	7	5
洗手間 Lavatory	煤氣熱水爐 Town Gas Water Heater	2	0	0	2	0	0	2	0	0	2	0	0
	熱水爐煤氣接駁點 Town Gas Connection Point For Water Heater	2	0	0	2	0	0	2	0	0	2	0	0
	抽氣扇 Exhaust Fan	1	1	0	1	1	0	1	1	0	1	1	0
	裝有熔斷器接線電掣 Fused Connection Unit	3	1	1	3	1	1	3	1	1	3	1	1
	抽氣扇開關掣 On/Off Switch for Exhaust Fan	1	0	0	1	0	0	1	0	0	1	0	0
	燈位 Lighting Point	1	1	1	1	1	1	1	1	1	1	1	1
	燈掣 Lighting Switch	1	0	0	1	0	0	1	0	0	1	0	0
廚房 Kitchen	總食水掣位 Main Water Supply Valve	1	1	1	1	1	1	1	1	1	1	1	1
	洗衣機接駁點(來水位，設計為直徑22毫米) Washing Machine Connection Point (Water Inlet of a design of 22mm in diameter)	1	1	1	1	1	1	1	1	1	1	1	1
	洗衣機接駁點(去水位，設計為直徑40毫米) Washing Machine Connection Point (Water Outlet of a design of 40mm in diameter)	1	1	1	1	1	1	1	1	1	1	1	1
	煤氣熱水爐 Town Gas Water Heater	0	2	1	0	2	1	0	2	1	0	2	1
	煮食爐煤氣接駁點 Town Gas Connection Point For Gas Hob	1	1	1	1	1	1	1	1	1	1	1	1
	熱水爐煤氣接駁點 Town Gas Connection Point For Water Heater	0	2	1	0	2	1	0	2	1	0	2	1
	抽氣扇 Exhaust Fan	2	2	1	2	2	1	2	2	1	2	2	1
	裝有熔斷器接線電掣 Fused Connection Unit	5	7	5	5	7	5	5	7	5	5	7	5
	接線電掣 Connection Unit	3	3	2	3	3	2	3	3	2	3	3	2
	13A雙位電插座 13A Twin Socket Outlet	2	2	2	2	2	2	2	2	2	2	2	2
	13A單位電插座 13A Single Socket Outlet	3	3	3	3	3	3	3	3	3	3	3	3
	燈位 Lighting Point	3	3	3	3	3	3	3	3	3	3	3	3
	燈掣 Lighting Switch	0	0	0	0	0	0	0	0	0	0	0	0
	門鐘 Door Bell	1	1	1	1	1	1	1	1	1	1	1	1

備註：住宅樓層不設4樓、13樓、14樓及24樓。 Remark: Residential floors 4/F, 13/F, 14/F and 24/F are omitted.

住宅單位機電裝置數量說明表 SCHEDULE OF ELECTRICAL & MECHANICAL PROVISIONS FOR RESIDENTIAL UNITS

第2座 TOWER 2	單位 Flat	A	B	C	A	B	C	A	B	C	A	B	C
	樓層 Floor	2樓 2nd Floor			3樓至15樓 3/F - 15/F			16樓至30樓 16/F - 30/F			31樓 31/F		
儲物房 Store Room	空調機室內機接駁點 Air-conditioner point for A/C Indoor Unit	1	1	1	1	1	1	1	1	1	1	1	1
	抽氣扇 Exhaust Fan	0	0	1	0	0	1	0	0	1	0	0	1
	13A單位電插座 13A Single Socket Outlet	1	1	1	1	1	1	1	1	1	1	1	1
	裝有熔斷器接線電掣 Fused Connection Unit	0	0	1	0	0	1	0	0	1	0	0	1
	抽氣扇開關掣 On/Off Switch for Exhaust Fan	0	1	0	0	1	0	0	1	0	0	1	0
	燈位 Lighting Point	1	1	1	1	1	1	1	1	1	1	1	1
	燈掣 Lighting Switch	1	2	2	1	2	2	1	2	2	1	2	2
	總電掣箱 Miniature Circuit Breakers	1	1	1	1	1	1	1	1	1	1	1	1
露台 Balcony	燈位 Lighting Point	1	1	0	1	1	1	1	1	1	1	1	1
工作平台 Utility Platform	電燈 Lighting Switch	1	1	1	1	1	1	1	1	1	1	1	1
平台 Flat Roof	13A單位電插座 13A Single Socket Outlet	不適用 N/A	不適用 N/A	不適用 N/A	不適用 N/A	不適用 N/A	不適用 N/A	不適用 N/A	不適用 N/A	不適用 N/A	1	1	不適用 N/A
	燈位 Lighting Point										3	4	
	燈掣 Lighting Switch										1	1	
公用平台 Common Flat Roof	空調機室外機接駁點 Air-conditioner point for A/C Outdoor Unit	4	4	3	不適用 N/A	不適用 N/A	不適用 N/A	不適用 N/A	不適用 N/A	不適用 N/A	不適用 N/A	不適用 N/A	不適用 N/A
前庭 Terrace	13A單位電插座 13A Single Socket Outlet	不適用 N/A	不適用 N/A	1	不適用 N/A	不適用 N/A	不適用 N/A	不適用 N/A	不適用 N/A	不適用 N/A	不適用 N/A	不適用 N/A	不適用 N/A
	燈位 Lighting Point			1									
	空調機室外機接駁點 Air-conditioner point for A/C Outdoor Unit			0									
冷氣機平台 A/C Platform	空調機室外機接駁點 Air-conditioner point for A/C Outdoor Unit	0	0	0	4	4	3	4	4	3	4	4	3
窗台頂 (睡房 2) Top of Bay Window (Bedroom 2)	空調機室外機接駁點 Air-conditioner point for A/C Outdoor Unit	2	2	0	2	2	0	2	2	0	2	2	0
窗台頂 (主人睡房) Top of Bay Window (Master Bedroom)	空調機室外機接駁點 Air-conditioner point for A/C Outdoor Unit	0	0	2	0	0	2	0	0	2	0	0	2

備註：住宅樓層不設4樓、13樓、14樓及24樓。 Remark: Residential floors 4/F, 13/F, 14/F and 24/F are omitted.

住宅單位機電裝置數量說明表 SCHEDULE OF ELECTRICAL & MECHANICAL PROVISIONS FOR RESIDENTIAL UNITS

第3座 TOWER 3	單位 Flat	A	B	C	A	B	C	A	C	B			A	B	C
	樓層 Floor	2樓 2nd Floor			3樓至15樓 3/F - 15/F			16樓至30樓 16/F - 30/F		16樓、18樓至 28樓、30樓 16/F, 18/F - 28/F, 30/F	17樓 17/F	29樓 29/F	31樓 31/F		
大門入口 Main Entrance	門鈴 Door Bell Push Button	1	1	1	1	1	1	1	1	1	1	1	1	1	1
客飯廳及走廊 Living Room / Dining Room and Corridor	空調機室內機接駁點 Air-conditioner point for A/C Indoor Unit	2	2	2	2	2	2	2	2	2	2	2	2	2	2
	13A雙位電插座 13A Twin Socket Outlet	3	3	3	3	3	3	3	3	3	3	2	3	3	3
	13A單位電插座 13A Single Socket Outlet	0	0	0	0	0	0	0	0	0	2	8	0	0	0
	電視/電台天線插座 TV/FM Outlet	2	2	2	2	2	2	2	2	2	2	2	2	2	2
	電話插座 Telephone Outlet	2	2	2	2	2	2	2	2	2	2	2	2	2	2
	抽氣扇開關掣 On/Off Switch for Exhaust Fan	2	2	2	2	2	2	2	2	2	2	2	2	2	2
	燈位 Lighting Point	4	6	4	4	6	4	4	4	6	6	23	4	6	4
	燈掣 Lighting Switch	8	9	10	8	9	9	8	9	9	11	12	8	9	9
	總電掣箱 Miniature Circuit Breakers Board	0	1	0	0	1	0	0	0	1	1	1	0	1	0
主人睡房 Master Bedroom	空調機室內機接駁點 Air-conditioner point for A/C Indoor Unit	1	1	1	1	1	1	1	1	1	1	1	2	1	1
	13A雙位電插座 13A Twin Socket Outlet	2	2	2	2	2	2	2	2	2	2	1	2	2	2
	13A單位電插座 13A Single Socket Outlet	0	0	0	0	0	0	0	0	0	2	4	0	0	0
	電視/電台天線插座 TV/FM Outlet	1	1	1	1	1	1	1	1	1	1	1	1	1	1
	電話插座 Telephone Outlet	1	1	1	1	1	1	1	1	1	1	1	1	1	1
	抽氣扇開關掣 On/Off Switch for Exhaust Fan	1	1	1	1	1	1	1	1	1	1	1	1	1	1
	燈位 Lighting Point	2	2	1	2	2	1	2	1	2	2	8	2	2	1
	燈掣 Lighting Switch	5	5	4	5	5	4	5	4	5	7	7	5	5	4
睡房 1 Bedroom 1	空調機室內機接駁點 Air-conditioner point for A/C Indoor Unit	1	1	1	1	1	1	1	1	1	1	1	1	1	1
	13A雙位電插座 13A Twin Socket Outlet	2	2	2	2	2	2	2	2	2	2	2	2	2	2
	13A單位電插座 13A Single Socket Outlet	0	0	0	0	0	0	0	0	0	0	1	0	0	0
	電視/電台天線插座 TV/FM Outlet	1	1	1	1	1	1	1	1	1	1	1	1	1	1
	電話插座 Telephone Outlet	1	1	1	1	1	1	1	1	1	1	1	1	1	1
	燈位 Lighting Point	1	1	1	1	1	1	1	1	1	1	4	1	1	1
	燈掣 Lighting Switch	1	1	1	1	1	1	1	1	1	3	3	1	1	1
睡房 2 Bedroom 2	空調機室內機接駁點 Air-conditioner point for A/C Indoor Unit	1	1	1	1	1	1	1	1	1	1	1	1	1	1
	13A雙位電插座 13A Twin Socket Outlet	2	2	2	2	2	2	2	2	2	2	2	2	2	2
	13A單位電插座 13A Single Socket Outlet	0	0	0	0	0	0	0	0	0	2	1	0	0	0
	電視/電台天線插座 TV/FM Outlet	1	1	1	1	1	1	1	1	1	1	1	1	1	1
	電話插座 Telephone Outlet	1	1	1	1	1	1	1	1	1	1	1	1	1	1
	抽氣扇開關掣 On/Off Switch for Exhaust Fan	0	1	0	0	1	0	0	0	1	1	1	0	1	0
	燈位 Lighting Point	1	1	1	1	1	1	1	1	1	1	5	1	1	1
	燈掣 Lighting Switch	1	3	1	1	3	1	1	1	3	4	4	1	3	1
睡房 3 Bedroom 3	空調機室內機接駁點 Air-conditioner point for A/C Indoor Unit	不適用 N/A	1	不適用 N/A	不適用 N/A	1	不適用 N/A	不適用 N/A	不適用 N/A	1	1	1	不適用 N/A	1	不適用 N/A
	13A雙位電插座 13A Twin Socket Outlet		2			2				2	2	2		2	
	電視/電台天線插座 TV/FM Outlet		1			1				1	1	1		1	

備註：住宅樓層不設4樓、13樓、14樓及24樓。 Remark: Residential floors 4/F, 13/F, 14/F and 24/F are omitted.

住宅單位機電裝置數量說明表 SCHEDULE OF ELECTRICAL & MECHANICAL PROVISIONS FOR RESIDENTIAL UNITS

第3座 TOWER 3	單位 Flat	A	B	C	A	B	C	A	C	B			A	B	C
	樓層 Floor	2樓 2nd Floor			3樓至15樓 3/F - 15/F			16樓至30樓 16/F - 30/F		16樓、18樓至 28樓、30樓 16/F, 18/F - 28/F, 30/F	17樓 17/F	29樓 29/F	31樓 31/F		
睡房 3 Bedroom 3	電話插座 Telephone Outlet	不適用 N/A	1	不適用 N/A	不適用 N/A	1	不適用 N/A	不適用 N/A	不適用 N/A	1	1	1	不適用 N/A	1	不適用 N/A
	燈位 Lighting Point		1			1				1	1	4		1	
	燈掣 Lighting Switch		1			1				1	3	2		1	
浴室 1 Bathroom 1	煤氣熱水爐溫度控制 Town Gas Water Heater Remote Control	1	1	1	1	1	1	1	1	1	1	1	1	1	1
	抽氣扇 Exhaust Fan	1	0	1	1	0	1	1	1	0	0	0	1	0	1
	裝有熔斷器接線電掣 Fused Connection Unit	2	1	2	2	1	2	2	2	1	1	1	2	1	2
	13A單位電插座 13A Single Socket Outlet	1	1	1	1	1	1	1	1	1	1	1	1	1	1
	燈位 Lighting Point	3	3	3	3	3	3	3	3	3	3	3	3	3	3
浴室 2 Bathroom 2	煤氣熱水爐溫度控制 Town Gas Water Heater Remote Control	1	1	1	1	1	1	1	1	1	1	1	1	1	1
	抽氣扇 Exhaust Fan	1	1	1	1	1	1	1	1	1	1	1	1	1	1
	裝有熔斷器接線電掣 Fused Connection Unit	2	2	2	2	2	2	2	2	2	2	2	2	2	2
	13A單位電插座 13A Single Socket Outlet	1	1	1	1	1	1	1	1	1	1	1	1	1	1
	燈位 Lighting Point	7	6	5	7	6	5	7	5	6	6	6	7	6	5
浴室 3 Bathroom 3	煤氣熱水爐溫度控制 Town Gas Water Heater Remote Control	不適用 N/A	1	不適用 N/A	不適用 N/A	1	不適用 N/A	不適用 N/A	不適用 N/A	1	1	1	不適用 N/A	1	不適用 N/A
	抽氣扇 Exhaust Fan		2			2				2	2	2		2	
	裝有熔斷器接線電掣 Fused Connection Unit		3			3				3	3	3		3	
	13A單位電插座 13A Single Socket Outlet		1			1				1	1	1		1	
	燈位 Lighting Point		3			3				3	3	3		3	
洗手間 Lavatory	煤氣熱水爐 Town Gas Water Heater	1	1	1	1	1	1	1	1	1	1	1	1	1	1
	熱水爐煤氣接駁點 Town Gas Connection Point For Water Heater	1	1	1	1	1	1	1	1	1	1	1	1	1	1
	抽氣扇 Exhaust Fan	1	1	1	1	1	1	1	1	1	1	1	1	1	1
	裝有熔斷器接線電掣 Fused Connection Unit	2	2	2	2	2	2	2	2	2	2	2	2	2	2
	抽氣扇開關掣 On/Off Switch for Exhaust Fan	0	1	0	0	1	0	0	0	1	1	1	0	1	0
	燈位 Lighting Point	1	1	1	1	1	1	1	1	1	1	1	1	1	1
	燈掣 Lighting Switch	0	1	0	0	1	0	0	0	1	1	1	0	1	0
廚房 Kitchen	總食水掣位 Main Water Supply Valve	1	1	1	1	1	1	1	1	1	1	1	1	1	1
	洗衣機接駁點 (來水位，設計為直徑22毫米) Washing Machine Connection Point (Water Inlet of a design of 22mm in diameter)	1	1	1	1	1	1	1	1	1	1	1	1	1	1
	洗衣機接駁點 (去水位，設計為直徑40毫米) Washing Machine Connection Point (Water Outlet of a design of 40mm in diameter)	1	1	1	1	1	1	1	1	1	1	1	1	1	1
	煤氣熱水爐 Town Gas Water Heater	1	1	0	1	1	0	1	0	1	1	1	1	1	0
	煮食爐煤氣接駁點 Town Gas Connection Point For Gas Hob	1	2	1	1	2	1	1	1	2	2	2	1	2	1
	熱水爐煤氣接駁點 Town Gas Connection Point For Water Heater	1	1	0	1	1	0	1	0	1	1	1	1	1	0
	抽氣扇 Exhaust Fan	1	1	1	1	1	1	1	1	1	1	1	1	1	1
	裝有熔斷器接線電掣 Fused Connection Unit	5	6	4	5	6	4	5	4	6	6	6	5	6	4
	接線電掣 Connection Unit	3	3	2	3	3	2	3	2	3	3	3	3	3	2

備註：住宅樓層不設4樓、13樓、14樓及24樓。 Remark: Residential floors 4/F, 13/F, 14/F and 24/F are omitted.

住宅單位機電裝置數量說明表 SCHEDULE OF ELECTRICAL & MECHANICAL PROVISIONS FOR RESIDENTIAL UNITS

第3座 TOWER 3	單位 Flat	A	B	C	A	B	C	A	C	B			A	B	C
	樓層 Floor	2樓 2nd Floor			3樓至15樓 3/F - 15/F			16樓至30樓 16/F - 30/F		16樓、18樓至 28樓、30樓 16/F, 18/F - 28/F, 30/F	17樓 17/F	29樓 29/F	31樓 31/F		
廚房 Kitchen	13A雙位電插座 13A Twin Socket Outlet	2	2	2	2	2	2	2	2	2	2	2	2	2	2
	13A單位電插座 13A Single Socket Outlet	3	4	3	3	4	3	3	3	4	4	4	3	4	3
	燈位 Lighting Point	3	5	3	3	5	3	3	3	5	5	5	3	5	3
	門鐘 Door Bell	1	1	1	1	1	1	1	1	1	1	1	1	1	1
工人房 Maid Room	空調機室內機接駁點 Air-conditioner point for A/C Indoor Unit	不適用 N/A	不適用 N/A	1	不適用 N/A	不適用 N/A	1	不適用 N/A	1	不適用 N/A	不適用 N/A	不適用 N/A	不適用 N/A	不適用 N/A	1
	13A雙位電插座 13A Twin Socket Outlet			1			1		1						1
	抽氣扇開關掣 On/Off Switch for Exhaust Fan			1			1		1						1
	燈位 Lighting Point			1			1		1						1
	燈掣 Lighting Switch			2			2		2						2
	總電掣箱 Miniature Circuit Breakers Board			1			1		1						1
儲物房 Store Room	空調機室內機接駁點 Air-conditioner point for A/C Indoor Unit	1	1	不適用 N/A	1	1	不適用 N/A	1	不適用 N/A	1	1	1	1	1	不適用 N/A
	13A單位電插座 13A Single Socket Outlet	1	1		1	1		1		1	1	1	1	1	
	抽氣扇開關掣 On/Off Switch for Exhaust Fan	1	0		1	0		1		0	0	0	1	0	
	燈位 Lighting Point	1	1		1	1		1		1	1	2	1	1	
	燈掣 Lighting Switch	2	1		2	1		2		1	1	2	2	1	
	總電掣箱 Miniature Circuit Breakers Board	1	0		1	0		1		0	0	0	1	0	
露台 Balcony	燈位 Lighting Point	1	1	1	1	1	1	1	1	1	1	1	1	1	1
工作平台 Utility Platform	燈位 Lighting Point	1	1	0	1	1	1	1	1	1	1	1	1	1	1
平台 Flat Roof	13A單位電插座 13A Single Socket Outlet	不適用 N/A	不適用 N/A	不適用 N/A	不適用 N/A	不適用 N/A	不適用 N/A	不適用 N/A	不適用 N/A	不適用 N/A	不適用 N/A	不適用 N/A	1	1	不適用 N/A
	燈位 Lighting Point												4	4	
	燈掣 Lighting Switch												1	1	
公用平台 Common Flat Roof	空調機室外機接駁點 Air-conditioner point for A/C Outdoor Unit	3	3	4	不適用 N/A	不適用 N/A	不適用 N/A	不適用 N/A	不適用 N/A	不適用 N/A	不適用 N/A	不適用 N/A	不適用 N/A	不適用 N/A	不適用 N/A
前庭 Terrace	13A單位電插座 13A Single Socket Outlet	不適用 N/A	不適用 N/A	1	不適用 N/A	不適用 N/A	不適用 N/A	不適用 N/A	不適用 N/A	不適用 N/A	不適用 N/A	不適用 N/A	不適用 N/A	不適用 N/A	不適用 N/A
	燈位 Lighting Point			2											
	空調機室外機接駁點 Air-conditioner point for A/C Outdoor Unit			0											
工作平台頂 Top of Utility Platform	空調機室外機接駁點 Air-conditioner point for A/C Outdoor Unit	0	0	0	不適用 N/A	不適用 N/A	不適用 N/A	不適用 N/A	不適用 N/A	不適用 N/A	不適用 N/A	不適用 N/A	1	0	0
冷氣機平台 A/C Platform	空調機室外機接駁點 Air-conditioner point for A/C Outdoor Unit	0	0	0	3	3	4	3	4	3	3	3	3	3	4
窗台頂(睡房 1) Top of Bay Window (Bedroom 1)	空調機室外機接駁點 Air-conditioner point for A/C Outdoor Unit	0	0	2	0	0	2	0	2	0	0	0	0	0	2
窗台頂(睡房 2) Top of Bay Window (Bedroom 2)	空調機室外機接駁點 Air-conditioner point for A/C Outdoor Unit	2	2	0	2	2	0	2	0	2	2	2	2	2	0
窗台頂(睡房 3) Top of Bay Window (Bedroom 3)	空調機室外機接駁點 Air-conditioner point for A/C Outdoor Unit	0	1	0	0	1	0	0	0	1	1	1	0	1	0

備註：住宅樓層不設4樓、13樓、14樓及24樓。 Remark: Residential floors 4/F, 13/F, 14/F and 24/F are omitted.

住宅單位機電裝置數量說明表 SCHEDULE OF ELECTRICAL & MECHANICAL PROVISIONS FOR RESIDENTIAL UNITS

第5座 TOWER 5	單位 Flat	A	B	C	A	B	C	A	B	C	A	B	C
	樓層 Floor	2樓 2nd Floor			3樓至9樓、11樓 至21樓 3/F - 9/F, 11/F - 21/F	10樓 10/F	3樓至21樓 3/F - 21/F	22樓至30樓 22/F - 30/F			31樓 31/F		
大門入口 Main Entrance	門鈴 Door Bell Push Button	1	1	1	1	1	1	1	1	1	1	1	1
客飯廳及走廊 Living Room / Dining Room and Corridor	空調機室內機接駁點 Air-conditioner point for A/C Indoor Unit	2	2	2	2	2	2	2	2	2	2	2	2
	13A雙位電插座 13A Twin Socket Outlet	3	3	3	3	2	3	3	3	3	3	3	3
	13A單位電插座 13A Single Socket Outlet	0	0	0	0	4	0	0	0	0	0	0	0
	電視/電台天線插座 TV/FM Outlet	2	2	2	2	1	2	2	2	2	2	2	2
	電話插座 Telephone Outlet	2	2	2	2	1	2	2	2	2	2	2	2
	抽氣扇開關掣 On/Off Switch for Exhaust Fan	2	2	2	2	2	2	2	2	2	2	2	2
	燈位 Lighting Point	5	4	4	5	28	4	4	5	4	4	5	4
	燈掣 Lighting Switch	8	9	9	8	9	9	9	8	9	9	8	9
主人睡房 Master Bedroom	空調機室內機接駁點 Air-conditioner point for A/C Indoor Unit	1	1	1	1	1	1	1	1	1	2	2	1
	13A雙位電插座 13A Twin Socket Outlet	2	2	2	2	1	2	2	2	2	2	2	2
	13A單位電插座 13A Single Socket Outlet	0	0	0	0	2	0	0	0	0	0	0	0
	電視/電台天線插座 TV/FM Outlet	1	1	1	1	1	1	1	1	1	1	1	1
	電話插座 Telephone Outlet	1	1	1	1	1	1	1	1	1	1	1	1
	抽氣扇開關掣 On/Off Switch for Exhaust Fan	1	1	1	1	1	1	1	1	1	1	1	1
	燈位 Lighting Point	2	1	1	2	12	1	1	2	1	1	2	1
	燈掣 Lighting Switch	4	4	3	4	5	4	3	4	4	3	4	3
睡房 1 Bedroom 1	空調機室內機接駁點 Air-conditioner point for A/C Indoor Unit	1	1	1	1	1	1	1	1	1	1	1	1
	13A雙位電插座 13A Twin Socket Outlet	2	2	2	2	1	2	2	2	2	2	2	2
	13A單位電插座 13A Single Socket Outlet	0	0	0	0	2	0	0	0	0	0	0	0
	電視/電台天線插座 TV/FM Outlet	1	1	1	1	1	1	1	1	1	1	1	1
	電話插座 Telephone Outlet	1	1	1	1	1	1	1	1	1	1	1	1
	燈位 Lighting Point	1	1	1	1	6	1	1	1	1	1	1	1
	燈掣 Lighting Switch	1	1	1	1	3	1	1	1	1	1	1	1
睡房 2 Bedroom 2	空調機室內機接駁點 Air-conditioner point for A/C Indoor Unit	1	1	1	1	1	1	1	1	1	1	1	1
	13A雙位電插座 13A Twin Socket Outlet	2	2	2	2	1	2	2	2	2	2	2	2
	13A單位電插座 13A Single Socket Outlet	0	0	0	0	1	0	0	0	0	0	0	0
	電視/電台天線插座 TV/FM Outlet	1	1	1	1	0	1	1	1	1	1	1	1
	電話插座 Telephone Outlet	1	1	1	1	0	1	1	1	1	1	1	1
	燈位 Lighting Point	1	1	1	1	2	1	1	1	1	1	1	1
	燈掣 Lighting Switch	1	1	1	1	2	1	1	1	1	1	1	1
睡房 3 Bedroom 3	空調機室內機接駁點 Air-conditioner point for A/C Indoor Unit	1	不適用 N/A	不適用 N/A	1	1	不適用 N/A	不適用 N/A	1	不適用 N/A	不適用 N/A	1	不適用 N/A
	13A雙位電插座 13A Twin Socket Outlet	2			2	1			2			2	
	13A單位電插座 13A Single Socket Outlet	0			0	2			0			0	
	電視/電台天線插座 TV/FM Outlet	1			1	1			1			1	
	電話插座 Telephone Outlet	1			1	1			1			1	
	抽氣扇開關掣 On/Off Switch for Exhaust Fan	1			1	1			1			1	

備註：住宅樓層不設4樓、13樓、14樓及24樓。 Remark: Residential floors 4/F, 13/F, 14/F and 24/F are omitted.

住宅單位機電裝置數量說明表 SCHEDULE OF ELECTRICAL & MECHANICAL PROVISIONS FOR RESIDENTIAL UNITS

第5座 TOWER 5	單位 Flat	A	B	C	A		B	C	A	B	C	A	B	C
	樓層 Floor	2樓 2nd Floor			3樓至9樓、11樓 至21樓 3/F - 9/F, 11/F - 21/F	10樓 10/F	3樓至21樓 3/F - 21/F		22樓至30樓 22/F - 30/F			31樓 31/F		
睡房 3 Bedroom 3	燈位 Lighting Point	1	不適用 N/A	不適用 N/A	1	9	不適用 N/A	不適用 N/A	1	不適用 N/A	不適用 N/A	1	不適用 N/A	不適用 N/A
	燈掣 Lighting Switch	3			3	5			3			3		
浴室 1 Bathroom 1	煤氣熱水爐溫度控制 Town Gas Water Heater Remote Control	1	1	1	1	1	1	1	1	1	1	1	1	1
	抽氣扇 Exhaust Fan	0	0	1	0	0	0	1	0	0	1	0	0	1
	裝有熔斷器接線電掣 Fused Connection Unit	1	1	2	1	1	1	2	1	1	2	1	1	2
	13A單位電插座 13A Single Socket Outlet	1	1	1	1	1	1	1	1	1	1	1	1	1
	燈位 Lighting Point	3	3	3	3	3	3	3	3	3	3	3	3	3
浴室 2 Bathroom 2	煤氣熱水爐溫度控制 Town Gas Water Heater Remote Control	1	1	1	1	1	1	1	1	1	1	1	1	1
	抽氣扇 Exhaust Fan	1	1	1	1	1	1	1	1	1	1	1	1	1
	裝有熔斷器接線電掣 Fused Connection Unit	2	2	2	2	2	2	2	2	2	2	2	2	2
	13A單位電插座 13A Single Socket Outlet	1	1	1	1	1	1	1	1	1	1	1	1	1
	燈位 Lighting Point	6	5	5	6	6	5	5	6	6	5	6	6	5
浴室 3 Bathroom 3	煤氣熱水爐溫度控制 Town Gas Water Heater Remote Control	1	不適用 N/A	不適用 N/A	1	1	不適用 N/A	不適用 N/A	1	不適用 N/A	不適用 N/A	1	不適用 N/A	不適用 N/A
	抽氣扇 Exhaust Fan	2			2	2			2			2		
	裝有熔斷器接線電掣 Fused Connection Unit	3			3	3			3			3		
	13A單位電插座 13A Single Socket Outlet	1			1	1			1			1		
	燈位 Lighting Point	4			4	4			4			4		
洗手間 Lavatory	煤氣熱水爐 Town Gas Water Heater	1	0	不適用 N/A	1	1	0	不適用 N/A	1	0	不適用 N/A	1	0	不適用 N/A
	熱水爐煤氣接駁點 Town Gas Connection Point For Water Heater	1	0		1	1	0		1	0		1	0	
	洗衣機來水位 Water Inlet Connection Point for Washing Machine	0	1		0	0	1		0	1		0	1	
	洗衣機去水位 Water Outlet Connection Point for Washing Machine	0	1		0	0	1		0	1		0	1	
	抽氣扇 Exhaust Fan	1	0		1	1	0		1	0		1	0	
	裝有熔斷器接線電掣 Fused Connection Unit	2	0		2	2	0		2	0		2	0	
	抽氣扇開關掣 On/Off Switch for Exhaust Fan	1	0		1	1	0		1	0		1	0	
	燈位 Lighting Point	1	1		1	1	1		1	1		1	1	
	燈掣 Lighting Switch	1	0		1	1	0		1	0		1	0	
廚房 Kitchen	總食水掣位 Main Water Supply Valve	1	1	1	1	1	1	1	1	1	1	1	1	1
	洗衣機接駁點(來水位, 設計為直徑22毫米) Washing Machine Connection Point (Water Inlet of a design of 22mm in diameter)	1	0	1	1	1	0	1	1	0	1	1	0	1
	洗衣機接駁點(去水位, 設計為直徑40毫米) Washing Machine Connection Point (Water Outlet of a design of 40mm in diameter)	1	0	1	1	1	0	1	1	0	1	1	0	1
	煤氣熱水爐 Town Gas Water Heater	1	1	0	1	1	1	0	1	2	0	1	2	0
	煮食爐煤氣接駁點 Town Gas Connection Point For Gas Hob	2	1	1	2	2	1	1	2	1	1	2	1	1
	熱水爐煤氣接駁點 Town Gas Connection Point For Water Heater	1	1	0	1	1	1	0	1	2	0	1	2	0
	空調機室內機接駁點 Air-conditioner point for A/C Indoor Unit	0	0	1	0	0	0	1	0	0	1	0	0	1
	抽氣扇 Exhaust Fan	1	3	1	1	1	3	1	1	3	1	1	3	1
	裝有熔斷器接線電掣 Fused Connection Unit	6	7	4	6	6	7	4	6	7	4	6	7	4
	接線電掣 Connection Unit	3	3	2	3	3	3	2	3	3	2	3	3	2

備註：住宅樓層不設4樓、13樓、14樓及24樓。 Remark: Residential floors 4/F, 13/F, 14/F and 24/F are omitted.

住宅單位機電裝置數量說明表 SCHEDULE OF ELECTRICAL & MECHANICAL PROVISIONS FOR RESIDENTIAL UNITS

第5座 TOWER 5	單位 Flat	A	B	C	A	B	C	A	B	C	A	B	C
	樓層 Floor	2樓 2nd Floor	3樓至9樓、11樓 至21樓 3/F - 9/F, 11/F - 21/F	10樓 10/F	3樓至21樓 3/F - 21/F	22樓至30樓 22/F - 30/F	31樓 31/F						
廚房 Kitchen	13A雙位電插座 13A Twin Socket Outlet	2	2	2	2	2	2	2	2	2	2	2	2
	13A單位電插座 13A Single Socket Outlet	4	3	4	4	4	3	4	4	3	4	4	3
	燈位 Lighting Point	5	2	3	5	5	2	3	5	2	3	5	2
	燈掣 Lighting Switch	0	0	1	0	0	0	1	0	0	1	0	0
	門鐘 Door Bell	1	1	1	1	1	1	1	1	1	1	1	1
	總電掣箱 Miniature Circuit Breakers Board	0	1	1	0	0	1	1	0	1	1	0	1
工人房 Maid Room	空調機室內機接駁點 Air-conditioner point for A/C Indoor Unit	不適用 N/A	1	不適用 N/A	不適用 N/A	不適用 N/A	1	不適用 N/A	1	不適用 N/A	不適用 N/A	1	不適用 N/A
	13A單位電插座 13A Single Socket Outlet		1				1		1			1	
	抽氣扇開關掣 On/Off Switch for Exhaust Fan		1				1		1			1	
	燈位 Lighting Point		1				1		1			1	
	燈掣 Lighting Switch		2				2		2			2	
儲物房 Store Room	空調機室內機接駁點 Air-conditioner point for A/C Indoor Unit	1	不適用 N/A	不適用 N/A	1	1	不適用 N/A	不適用 N/A	1	不適用 N/A	不適用 N/A	1	不適用 N/A
	13A單位電插座 13A Single Socket Outlet	1			1	1			1			1	
	燈位 Lighting Point	1			1	1			1			1	
	燈掣 Lighting Switch	1			1	1			1			1	
	總電掣箱 Miniature Circuit Breakers Board	1			1	1			1			1	
露台 Balcony	燈位 Lighting Point	1	1	0	1	1	1	1	1	1	1	1	1
工作平台 Utility Platform	裝有熔斷器接線電掣 Fused Connection Unit	0	0	1	0	0	0	1	0	0	1	0	0
	煤氣熱水爐 Town Gas Water Heater	0	0	1	0	0	0	1	0	0	1	0	0
	熱水爐煤氣接駁點 Town Gas Connection Point For Water Heater	0	0	1	0	0	0	1	0	0	1	0	0
	燈位 Lighting Point	0	1	1	1	1	1	1	1	1	1	1	1
平台 Flat Roof	13A單位電插座 13A Single Socket Outlet	不適用 N/A	不適用 N/A	不適用 N/A	不適用 N/A	不適用 N/A	不適用 N/A	不適用 N/A	不適用 N/A	不適用 N/A	不適用 N/A	1	1
	燈位 Lighting Point											3	3
	燈掣 Lighting Switch											1	1
公用平台 Common Flat Roof	空調機室外機接駁點 Air-conditioner point for A/C Outdoor Unit	4	3	4	不適用 N/A	不適用 N/A	不適用 N/A	不適用 N/A	不適用 N/A	不適用 N/A	不適用 N/A	不適用 N/A	不適用 N/A
前庭 Terrace	13A單位電插座 13A Single Socket Outlet	1	不適用 N/A	1	不適用 N/A	不適用 N/A	不適用 N/A	不適用 N/A	不適用 N/A	不適用 N/A	不適用 N/A	不適用 N/A	不適用 N/A
	燈位 Lighting Point	1		1									
	空調機室外機接駁點 Air-conditioner point for A/C Outdoor Unit	0		0									
冷氣機平台 A/C Platform	空調機室外機接駁點 Air-conditioner point for A/C Outdoor Unit	0	0	0	4	4	3	4	4	3	4	4	3
窗台頂(工人房) Top of Bay Window (Maid Room)	空調機室外機接駁點 Air-conditioner point for A/C Outdoor Unit	0	1	0	0	0	1	0	0	1	0	0	1
窗台頂(睡房 1) Top of Bay Window (Bedroom 1)	空調機室外機接駁點 Air-conditioner point for A/C Outdoor Unit	0	1	1	0	0	1	1	0	1	1	0	1
窗台頂(睡房 2) Top of Bay Window (Bedroom 2)	空調機室外機接駁點 Air-conditioner point for A/C Outdoor Unit	0	1	0	0	0	1	0	0	1	0	0	1
窗台頂(睡房 3) Top of Bay Window (Bedroom 3)	空調機室外機接駁點 Air-conditioner point for A/C Outdoor Unit	2	0	0	2	2	0	0	2	0	0	3	0

備註：住宅樓層不設4樓、13樓、14樓及24樓。 Remark: Residential floors 4/F, 13/F, 14/F and 24/F are omitted.

住宅單位機電裝置數量說明表 SCHEDULE OF ELECTRICAL & MECHANICAL PROVISIONS FOR RESIDENTIAL UNITS

洋房 HOUSE	洋房號數 House No.	1	2-3, 5-9	10	1	2-3, 5-9	10	1	2-3, 5-9	10	1	2-3, 5-9	10
	樓層 Floor	地下 Ground Floor			1樓 1st Floor			2樓 2nd Floor			天台 Roof		
大門入口 Main Entrance	門鈴 Door Bell Push Button	1	1	1	不適用 N/A	不適用 N/A	不適用 N/A	不適用 N/A	不適用 N/A	不適用 N/A	不適用 N/A	不適用 N/A	不適用 N/A
	燈位 Lighting Point	1	1	1									
	移動感測器 Motion Sensor	1	1	1									
	裝有熔斷器接線電掣 Fused Connection Unit	1	1	1									
門廳 Foyer	視像電話 Video Door Phone	1	1	1	不適用 N/A	不適用 N/A	不適用 N/A	不適用 N/A	不適用 N/A	不適用 N/A	不適用 N/A	不適用 N/A	不適用 N/A
	抽氣扇開關掣 On/Off Switch for Exhaust Fan	2	2	2									
	燈位 Lighting Point	2	2	5									
	燈掣 Lighting Switch	8	8	9									
飯廳 Dining Room	冷氣機開關掣 On/Off Switch for A/C Unit	2	2	2	不適用 N/A	不適用 N/A	不適用 N/A	不適用 N/A	不適用 N/A	不適用 N/A	不適用 N/A	不適用 N/A	不適用 N/A
	13A雙位電插座 13A Twin Socket Outlet	6	6	6									
	13A單位電插座 13A Single Socket Outlet	1	1	1									
	電視/電台天線插座 TV/FM Outlet	2	2	2									
	電話插座 Telephone Outlet	2	2	2									
	數據位 Data point	1	1	1									
	燈位 Lighting Point	4	4	11									
廚房 Kitchen	總食水掣位 Main Water Supply Valve	1	1	1	不適用 N/A	不適用 N/A	不適用 N/A	不適用 N/A	不適用 N/A	不適用 N/A	不適用 N/A	不適用 N/A	不適用 N/A
	洗衣機接駁點(來水位，設計為直徑22毫米) Washing Machine Connection Point (Water Inlet of a design of 22mm in diameter)	1	1	1									
	洗衣機接駁點(去水位，設計為直徑40毫米) Washing Machine Connection Point (Water Outlet of a design of 40mm in diameter)	1	1	1									
	煮食爐煤氣接駁點 Town Gas Connection Point For Gas Hob	2	2	2									
	抽氣扇 Exhaust Fan	3	3	3									
	裝有熔斷器接線電掣 Fused Connection Unit	13	13	13									
	接線電掣 Connection Unit	4	4	4									
	13A雙位電插座 13A Twin Socket Outlet	2	2	2									
	13A單位電插座 13A Single Socket Outlet	5	5	5									
	燈位 Lighting Point	5	5	5									
	門鐘 Door Bell	1	1	1									
化妝間 Powder Room	燈位 Lighting Point	3	3	3	0	0	0	0	0	0	0	0	0
洗手間 Lavatory	燈位 Lighting Point	2	2	2	0	0	0	0	0	0	0	0	0
儲物房 Store Room	13A單位電插座 13A Single Socket Outlet	1	1	1	不適用 N/A	不適用 N/A	不適用 N/A	不適用 N/A	不適用 N/A	不適用 N/A	不適用 N/A	不適用 N/A	不適用 N/A
	燈位 Lighting Point	1	1	1									
	燈掣 Lighting Switch	1	1	1									
	總電掣箱 Miniature Circuit Breakers Board	1	1	1									

備註：不設4號洋房。 Remark: House No. 4 is omitted.

住宅單位機電裝置數量說明表 SCHEDULE OF ELECTRICAL & MECHANICAL PROVISIONS FOR RESIDENTIAL UNITS

洋房 HOUSE	洋房號數 House No.	1	2-3, 5-9	10	1	2-3, 5-9	10	1	2-3, 5-9	10	1	2-3, 5-9	10
	樓層 Floor	地下 Ground Floor			1樓 1st Floor			2樓 2nd Floor			天台 Roof		
工作平台 Utility Platform	燈位 Lighting Point	1	1	1	不適用 N/A	不適用 N/A	不適用 N/A	不適用 N/A	不適用 N/A	不適用 N/A	不適用 N/A	不適用 N/A	不適用 N/A
	燈掣 Lighting Switch	2	2	2									
	抽氣扇開關掣 On/Off Switch for Exhaust Fan	1	1	1									
客廳 Living Room	空調機室內機接駁點 Air-conditioner point for A/C Indoor Unit	不適用 N/A	不適用 N/A	不適用 N/A	2	2	2	不適用 N/A	不適用 N/A	不適用 N/A	不適用 N/A	不適用 N/A	不適用 N/A
	13A雙位電插座 13A Twin Socket Outlet				5	5	5						
	13A單位電插座 13A Single Socket Outlet				5	5	5						
	數據位 Data point				1	1	1						
	視像電話 Video Doorphone Unit				1	1	1						
	電視/電台天線插座 TV/FM Outlet				2	2	2						
	電話插座 Telephone Outlet				2	2	2						
	裝有熔斷器接線電掣 Fused Connection Unit				1	1	1						
	燈位 Lighting Point				5	5	12						
	燈掣 Lighting Switch				2	2	3						
睡房 1 Bedroom 1	空調機室內機接駁點 Air-conditioner point for A/C Indoor Unit	不適用 N/A	不適用 N/A	不適用 N/A	1	1	1	不適用 N/A	不適用 N/A	不適用 N/A	不適用 N/A	不適用 N/A	不適用 N/A
	13A雙位電插座 13A Twin Socket Outlet				3	3	3						
	數據位 Data point				1	1	1						
	電視/電台天線插座 TV/FM Outlet				1	1	1						
	電話插座 Telephone Outlet				1	1	1						
	13A單位電插座 13A Single Socket Outlet				1	1	1						
	抽氣扇開關掣 On/Off Switch for Exhaust Fan				1	1	1						
	燈位 Lighting Point				1	1	3						
	燈掣 Lighting Switch				3	3	5						
浴室 1 Bathroom 1	煤氣熱水爐溫度控制 Town Gas Water Heater Remote Control	不適用 N/A	不適用 N/A	不適用 N/A	1	1	1	不適用 N/A	不適用 N/A	不適用 N/A	不適用 N/A	不適用 N/A	不適用 N/A
	抽氣扇 Exhaust Fan				1	1	1						
	裝有熔斷器接線電掣 Fused Connection Unit				1	1	1						
	13A單位電插座 13A Single Socket Outlet				1	1	1						
	燈位 Lighting Point				5	5	5						
樓梯 Stair	燈位 Lighting Point	不適用 N/A	不適用 N/A	不適用 N/A	1	1	1	1	1	1	不適用 N/A	不適用 N/A	不適用 N/A
	燈掣 Lighting Switch				2	2	2	0	0	0			
主人睡房 Master Bedroom	空調機室內機接駁點 Air-conditioner point for A/C Indoor Unit	不適用 N/A	不適用 N/A	不適用 N/A	不適用 N/A	不適用 N/A	不適用 N/A	1	1	1	不適用 N/A	不適用 N/A	不適用 N/A
	13A雙位電插座 13A Twin Socket Outlet							4	4	4			
	13A單位電插座 13A Single Socket Outlet							1	1	2			
	數據位 Data point							1	1	1			
	電視/電台天線插座 TV/FM Outlet							1	1	1			
	電話插座 Telephone Outlet							3	3	3			
	抽氣扇開關掣 On/Off Switch for Exhaust Fan							1	1	1			
	燈位 Lighting Point							3	3	12			
	燈掣 Lighting Switch							4	4	6			

備註：不設4號洋房。 Remark: House No. 4 is omitted.

住宅單位機電裝置數量說明表 SCHEDULE OF ELECTRICAL & MECHANICAL PROVISIONS FOR RESIDENTIAL UNITS

洋房 HOUSE	洋房號數 House No.	1	2-3, 5-9	10	1	2-3, 5-9	10	1	2-3, 5-9	10	1	2-3, 5-9	10
	樓層 Floor	地下 Ground Floor			1樓 1st Floor			2樓 2nd Floor			天台 Roof		
睡房 2 Bedroom 2	空調機室內機接駁點 Air-conditioner point for A/C Indoor Unit	不適用 N/A	不適用 N/A	不適用 N/A	不適用 N/A	不適用 N/A	不適用 N/A	1	1	1	不適用 N/A	不適用 N/A	不適用 N/A
	13A雙位電插座 13A Twin Socket Outlet							2	2	3			
	13A單位電插座 13A Single Socket Outlet							1	1	0			
	數據位 Data point							1	1	1			
	電視/電台天線插座 TV/FM Outlet							1	1	1			
	電話插座 Telephone Outlet							1	1	1			
	燈位 Lighting Point							1	1	1			
	燈掣 Lighting Switch							1	1	2			
睡房 3 Bedroom 3	空調機室內機接駁點 Air-conditioner point for A/C Indoor Unit	不適用 N/A	不適用 N/A	不適用 N/A	不適用 N/A	不適用 N/A	不適用 N/A	1	1	1	不適用 N/A	不適用 N/A	不適用 N/A
	13A雙位電插座 13A Twin Socket Outlet							2	2	2			
	電視/電台天線插座 TV/FM Outlet							1	1	1			
	電話插座 Telephone Outlet							2	2	2			
	燈位 Lighting Point							1	1	3			
	燈掣 Lighting Switch							1	1	3			
浴室 2 Bathroom 2	煤氣熱水爐溫度控制 Town Gas Water Heater Remote Control	不適用 N/A	不適用 N/A	不適用 N/A	不適用 N/A	不適用 N/A	不適用 N/A	1	1	1	不適用 N/A	不適用 N/A	不適用 N/A
	抽氣扇 Exhaust Fan							1	1	1			
	裝有熔斷器接線電掣 Fused Connection Unit							1	1	1			
	13A單位電插座 13A Single Socket Outlet							1	1	1			
	燈位 Lighting Point							5	5	5			
浴室 3 Bathroom 3	空調機室內機接駁點 Air-conditioner point for A/C Indoor Unit	不適用 N/A	不適用 N/A	不適用 N/A	不適用 N/A	不適用 N/A	不適用 N/A	1	1	1	不適用 N/A	不適用 N/A	不適用 N/A
	煤氣熱水爐溫度控制 Town Gas Water Heater Remote Control							1	1	1			
	抽氣扇 Exhaust Fan							1	1	1			
	裝有熔斷器接線電掣 Fused Connection Unit							2	2	2			
	13A雙位電插座 13A Twin Socket Outlet							1	1	1			
	燈位 Lighting Point							9	9	9			
走廊 Corridor	抽氣扇開關掣 On/Off Switch for Exhaust Fan	不適用 N/A	不適用 N/A	不適用 N/A	不適用 N/A	不適用 N/A	不適用 N/A	1	1	1	不適用 N/A	不適用 N/A	不適用 N/A
	燈位 Lighting Point							2	2	2			
	燈掣 Lighting Switch							3	3	3			
天台 Roof	煤氣熱水爐 Town Gas Water Heater	不適用 N/A	不適用 N/A	不適用 N/A	不適用 N/A	不適用 N/A	不適用 N/A	不適用 N/A	不適用 N/A	不適用 N/A	2	2	2
	熱水爐煤氣接駁點 Town Gas Connection Point For Water Heater										2	2	2
	裝有熔斷器接線電掣 Fused Connection Unit										2	2	2
	燈位 Lighting Point										1	1	1
	燈掣 Lighting Switch										1	1	1
	空調機室外機接駁點 Air-conditioner point for A/C Outdoor Unit										2	2	2

備註：不設4號洋房。 Remark: House No. 4 is omitted.

住宅單位機電裝置數量說明表 SCHEDULE OF ELECTRICAL & MECHANICAL PROVISIONS FOR RESIDENTIAL UNITS

洋房 HOUSE	洋房號數 House No.	1	2-3, 5-9	10	1	2-3, 5-9	10	1	2-3, 5-9	10	1	2-3, 5-9	10
	樓層 Floor	地下 Ground Floor			1樓 1st Floor			2樓 2nd Floor			天台 Roof		
花園 Garden	煤氣熱水爐 Town Gas Water Heater	1	1	0	不適用 N/A	不適用 N/A	不適用 N/A	不適用 N/A	不適用 N/A	不適用 N/A	不適用 N/A	不適用 N/A	不適用 N/A
	按摩浴缸 Jacuzzi	1	1	0									
	熱水爐煤氣接駁點 Town Gas Connection Point For Water Heater	1	1	0									
	可視對講機 Visitor panel	1	1	1									
	電門鎖 Electric Door Lock	1	1	1									
	裝有熔斷器接線電掣 Fused Connection Unit	4	4	0									
	13A單位電插座 13A Single Socket Outlet	2	2	2									
	燈位 Lighting Point	17	13	16									
	燈掣 Lighting Switch	5	4	3									
	隔離開關 Isolating Switch	3	3	2									

備註：不設4號洋房。 Remark: House No. 4 is omitted.

食水及沖廁水由水務署供應。
電力由中華電力有限公司供應。
煤氣由香港中華煤氣有限公司供應。

Potable and flushing water is supplied by Water Supplies Department.
Electricity is supplied by CLP Power Hong Kong Limited.
Towngas is supplied by The Hong Kong and China Gas Company Limited.

地稅 GOVERNMENT RENT

擁有人有法律責任繳付該住宅物業直至並包括該住宅物業買賣完成日(即該物業轉讓契日期)之地稅。

The owner is liable for the Government rent payable for the residential property up to and including the date of completion of the sale and purchase of that residential property (i.e. the date of the assignment of that property).

買方的雜項付款 MISCELLANEOUS PAYMENTS BY PURCHASER

在向買方交付住宅物業在空置情況下的管有權時，買方須負責向擁有人補還水、電力及氣體的按金；
在交付時，買方不須向擁有人支付清理廢料的費用。

On the delivery of the vacant possession of a residential property to the purchaser, the purchaser is liable to reimburse the owner for the deposits for water, electricity and gas;

On that delivery, the purchaser is not liable to pay to the owner a debris removal fee.

註：在交付時，買方須根據公契向管理人(而非擁有人)支付清理廢料的費用，而如擁有人已支付清理廢料的費用，買方須向擁有人補還清理廢料的費用

Remark: On that delivery, the purchaser is liable to pay a debris removal fee to the manager (not the owner) under the deed of mutual covenant, and where the owner has paid that debris removal fee, the purchaser shall reimburse the owner for the same.



欠妥之處的保養責任期 DEFECT LIABILITY WARRANTY PERIOD

凡物業或於買賣合約列出裝設於物業內的裝置、裝修物料或設備有欠妥之處，而該欠妥之處並非由買方行為或疏忽造成，則賣方在接獲買方在買賣成交日期後的6個月內送達的書面通知後，須於合理地切實可行的範圍內，盡快自費作出補救。

The Vendor shall, at its own cost and as soon as reasonably practicable after receipt of a written notice served by the Purchaser within 6 months after the date of completion of the sale and purchase, remedy any defects to the Property, or the fittings, finishes or appliances incorporated into the Property as set out in the agreement for sale and purchase, caused otherwise than by the act or neglect of the Purchaser.



修訂 MODIFICATION

發展項目現時並沒有向政府提出申請修訂批地文件。

No existing application to the Government for a modification of the land grant for the Development.



有關資料 RELEVANT INFORMATION

發展項目的管理人進行清潔、保養或其他工作期間，可能會在屬於住宅物業一部分之平台、前庭或花園的上空使用及操作吊船系統。

When the manager of the Development carries out cleaning, maintenance or other works for the Development, gondola systems may be engaged and operated in the air-spaces above the flat roof, terrace or garden forming part of a residential property.

不適用

Not applicable

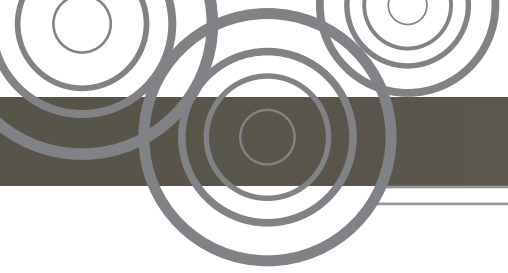
賣方為施行《一手住宅物業銷售條例》第2部而就發展項目指定的
互聯網網站的網址：

www.StarsByTheHarbour.com.hk

The address of the website designated by the vendor for the Development
for the purposes of Part 2 of the Residential Properties (First-hand Sales)

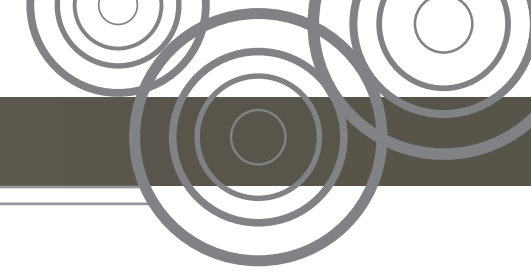
Ordinance:

www.StarsByTheHarbour.com.hk



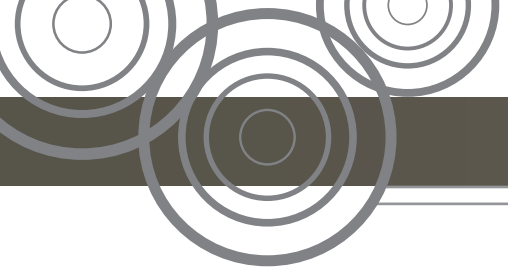
刪除此頁並換上空頁。

This page is deleted and replaced with a blank page.



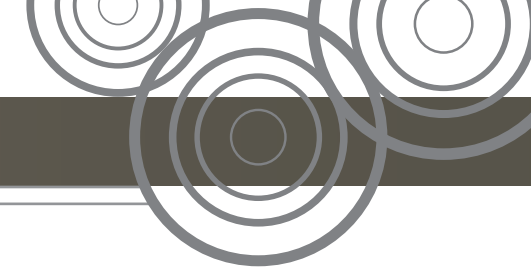
刪除此頁並換上空頁。

This page is deleted and replaced with a blank page.



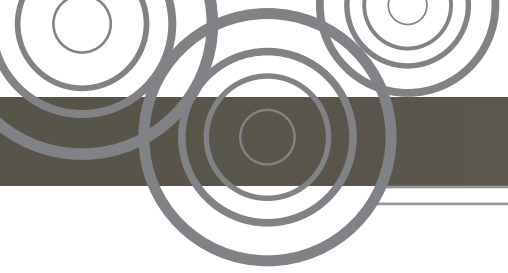
刪除此頁並換上空頁。

This page is deleted and replaced with a blank page.



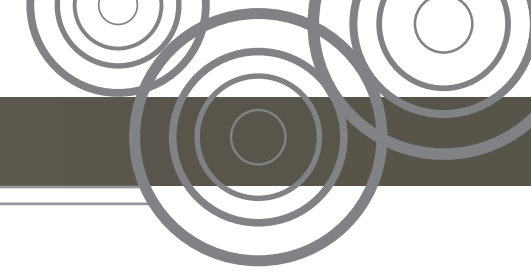
刪除此頁並換上空頁。

This page is deleted and replaced with a blank page.



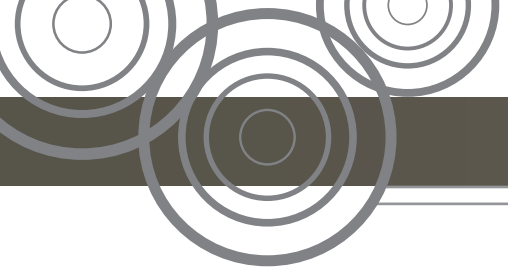
刪除此頁並換上空頁。

This page is deleted and replaced with a blank page.



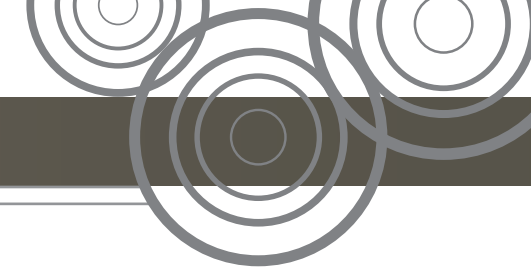
刪除此頁並換上空頁。

This page is deleted and replaced with a blank page.



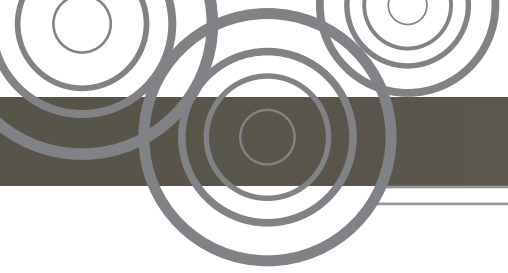
刪除此頁並換上空頁。

This page is deleted and replaced with a blank page.



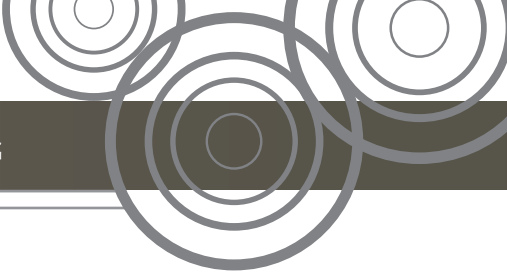
刪除此頁並換上空頁。

This page is deleted and replaced with a blank page.



刪除此頁並換上空頁。

This page is deleted and replaced with a blank page.



獲寬免總樓面面積的設施分項 Breakdown of Gross Floor Area (GFA) Concessions Obtained for All Features

於印製售樓說明書前呈交予並已獲建築事務監督批准的一般建築圖則上有關總樓面面積寬免的分項的最新資料，請見下表。如印製售樓說明書時尚未呈交最終修訂圖則予建築事務監督，則有(＃)號的資料可以由認可人士提供的資料作為基礎。直至最終修訂圖則於發出有關發展項目的佔用許可證前呈交予並獲建築事務監督批准前，以下分項資料仍可能有所修改。

Latest information on breakdown of GFA concessions as shown on the general building plans submitted to and approved by the Building Authority (BA) prior to the printing of the sales brochure is tabulated below. Information marked (#) may be based on information provided by the authorized person if the sales brochure is printed prior to submission of the final amendment plans to the BA. The breakdown

of GFA concessions may be subject to further changes until final amendment plans are submitted to and approved by the BA prior to the issuance of the occupation permit for the Development.

		面積 (平方米) Area (m²)
根據《建築物(規劃)規例》第23(3)(b)條不計算的總樓面面積 Disregarded GFA under Building (Planning) Regulations 23(3)(b)		
1.(#)	停車場及上落客貨地方(公共交通總站除外) Carparks and loading / unloading areas excluding public transport terminus	9,677.362
2.(#)	機房及相類設施 Plant rooms and similar services	2,614.114
2.1	受相關《認可人士、註冊結構工程師及註冊岩土工程師作業備考》或相關規例限制的機房及類似設施(如空調機房、電訊及廣播設備室、垃圾及物料回收房等)的面積 Area of plant rooms and similar services which are limited by respective PNAPs or regulations such as A/C plant room, TBE room, refuse storage and material recovery chamber, etc.	不適用 N/A
2.2	不受相關《認可人士、註冊結構工程師及註冊岩土工程師作業備考》或相關規例限制的機房及類似設施(如變壓器房、電掣房、泵房等)的面積 Area of plant rooms and similar services which are NOT limited by any PNAPs or regulations such as transformer room, switch room, pump room, etc	
3.	供人離開或到達旅館時上落汽車之用的面積 Area for picking up and setting down persons departing from or arriving at the hotel by vehicle	
4.	旅館的輔助性設施 Supporting facilities for hotels	
根據《聯合作業備考》第1號和第2號提供的環保設施 Green Features under Joint Practices Notes 1 and 2		
5.	露台 Balcony	871.071
6.	加闊的公用走廊及升降機大堂 Wider common corridor and lift lobby	220.272
7.	公用空中花園 Communal sky garden	不適用 N/A
8.	公用平台花園 Communal podium garden	
9.	隔聲鰭 Acoustic fin	
10.	遮陽篷及反光罩 Sunshade and reflector	
11.	翼牆、捕風器及風斗 Wing wall, wind catcher and funnel	
12.	非結構預製外牆 Non-structural prefabricated external wall	1,375.658
13.	工作平台 Utility platform	478.500
14.	設有郵箱的郵件派遞室 Mail delivery room with mail boxes	不適用 N/A
15.	隔音屏障 Noise barrier	

		面積 (平方米) Area (m²)
適意設施 Amenity Features		
16.	供保安人員和管理處員工使用的櫃枱、辦公室、儲物室、警衛室和廁所 Counters, offices, stores, guard rooms and lavatories for watchmen and management staff	53.025
17.	康樂設施 Recreational facilities	1,022.595
18.	小型後勤設施用房 Miniature logistic service room	不適用 N/A
19.	有上蓋的園景區及遊樂用地 Covered landscaped and play areas	45.642
20.	橫向屏障/有蓋人行道 Horizontal screens / covered walkways	136.647
21.	尊貴入口 Prestige entrance	不適用 N/A
22.	在商業及工作樓宇內的郵件室 Mail room in commercial and industrial buildings	
其他項目 Other Exempted Items		
23.(#)	機房所需的管槽、氣槽 Pipe duct, air duct for plant room	507.385
24.	空間 Void	不適用 N/A
25.	庇護層 Refuge floor	
26.	游泳池的濾水器機房 Swimming pool filtration plant room	
27.	公眾通道 Public passage	1,313.753
28.	公共交通總站 Public transport terminus (PTT)	不適用 N/A
29.	擴大升降機井道 Large lift shaft	159.437
30.	共用構築物及樓梯 Party structures and common staircases	不適用 N/A
額外總樓面面積 Bonus GFA		
31.	額外總樓面面積 Bonus GFA	不適用 N/A

註：上述表格是根據屋宇署所發出的《認可人士、註冊結構工程師及註冊岩土工程師作業備考》ADM-2規定的要求而制訂的。屋宇署會按實際需要不時更改有關要求。

Note: The above table is based on the requirements as stipulated in the Practice Note for Authorized Persons, Registered Structural Engineers and Registered Geotechnical Engineers ADM-2 issued by the Buildings Department. The Buildings Department may revise such requirements from time to time as appropriate.

有關建築物的環境評估及發展項目的公用部分的預計能量表現或消耗的資料

發展項目的經批准一般建築圖則不受由建築事務監督發出的《認可人士、註冊結構工程師及註冊岩土工程師作業備考》APP-151規定規限。發展項目的環境評估及公用部分的預計能量表現或消耗的資料無須呈交建築事務監督，以作為批予總樓面面積寬免的先決條件。

Environmental assessment of the building and information on the estimated energy performance or consumption for the common parts of the Development

The approved general building plans of the Development are not subject to the requirements stipulated in the Practice Note for Authorized Persons, Registered Structural Engineers and Registered Geotechnical Engineers APP-151 issued by the Building Authority. Environmental assessment and information on the estimated energy performance or consumption for the common parts of the Development were not required to be submitted to the Building Authority as a prerequisite for the granting of gross floor area concessions.

2015年6月22日

22nd June 2015

改變

CHANGES

發展項目及其周邊地區日後可能出現改變。

There may be future changes to the Development and the surrounding areas.

