

FLOOR PLANS OF RESIDENTIAL PROPERTIES IN THE DEVELOPMENT 發展項目的住宅物業的樓面平面圖

Legend of Terms and Abbreviations used on Floor Plans:

樓面平面圖中所使用名詞及簡稱之圖例：

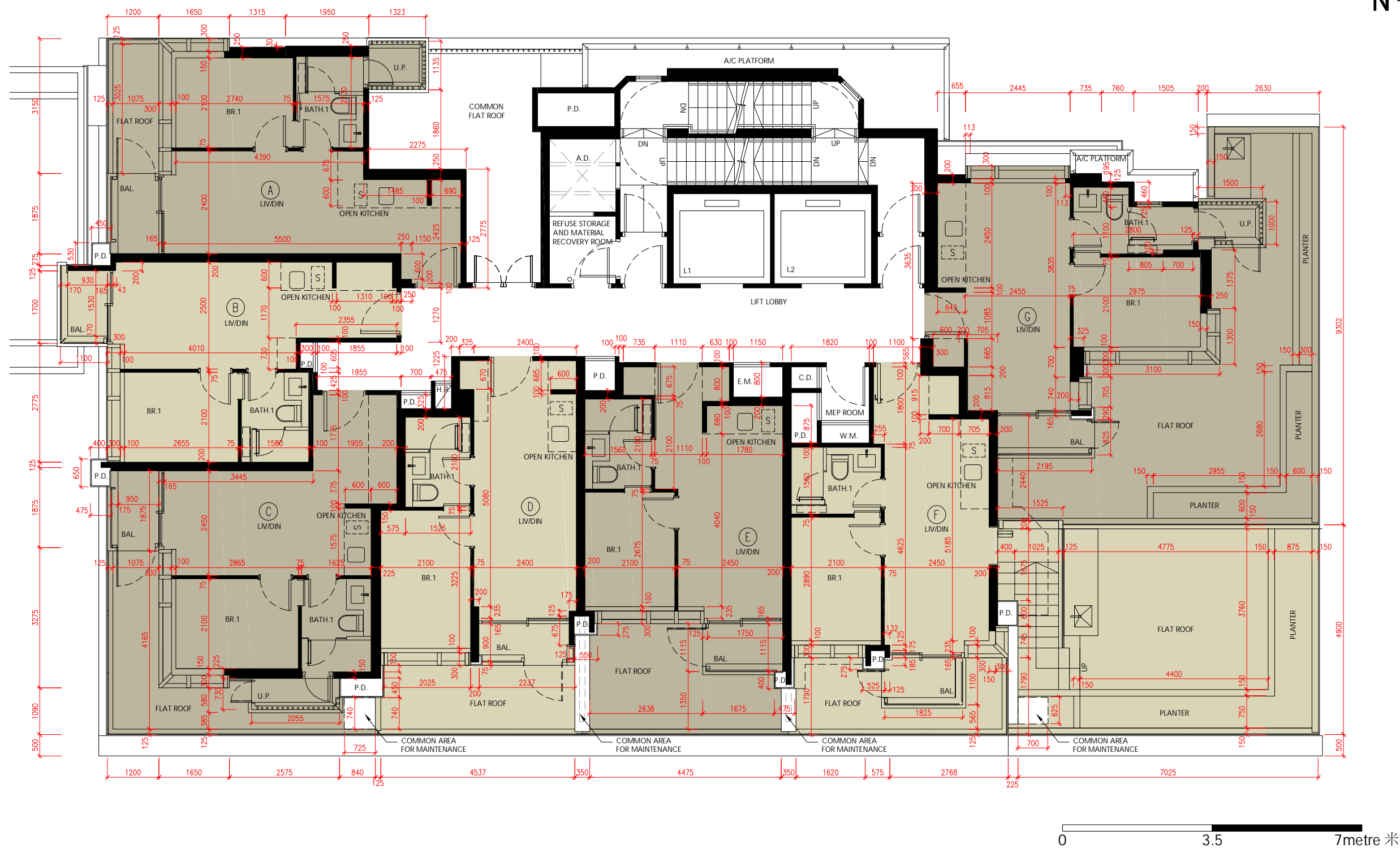
A/C PLATFORM	= AIR CONDITIONER PLATFORM 冷氣機平台	LAV.	= LAVATORY 洗手間
A.D.	= AIR DUCT 風管槽	LIFT LOBBY	= 升降機大堂
ARCHITECTURAL FEATURE	= 建築裝飾	LIFT SHAFT	= 升降機槽
BAL.	= BALCONY 露台	LIV/DIN	= LIVING ROOM / DINING ROOM 客廳/飯廳
BATH.1	= BATHROOM 1 浴室 1	MEP ROOM	= MECHANICAL ELECTRICAL PLANT 機電房
BATH.2	= BATHROOM 2 浴室 2	OPEN KITCHEN	= 開放式廚房
BR.1	= BEDROOM 1 睡房 1	P.D.	= PIPE DUCT 管道槽
BR.2	= BEDROOM 2 睡房 2	PLANTER	= 種植槽
BR.3	= BEDROOM 3 睡房 3	POTABLE FLUSH WATER BOOSTER PUMP ROOM	= 食水沖廁水加壓泵房
C.D.	= ELECTRICAL CABLE RISER DUCT 電線槽	REFUGE ROOF	= 庇護層
COMMON AREA FOR MAINTENANCE	= 公共位置予維修用途	REFUSE STORAGE AND MATERIAL RECOVERY ROOM	= 垃圾及物料回收室
DN	= DOWN 落	ROOF	= 天台
E.M. / EMD	= ELECTRIC METER CABINET 電錶箱	S	= STOVE 爐頭
FLAT ROOF	= 平台	STORE	= STORE ROOM 儲物房
COMMON FLAT ROOF	= 公共平台	R.C. CANOPY	= REINFORCED CEMENT CONCRETE CANOPY 鋼筋水泥混凝土簷篷
FLAT ROOF AT 3/F ONLY	= 3 樓平台	R.C. PARAPET	= REINFORCED CEMENT CONCRETE PARAPET 鋼筋水泥混凝土女兒牆
HORIZONTAL P.D. AT 3/F ONLY	= HORIZONTAL PIPE DUCT AT 3/F ONLY 橫向管道槽只置於 3 樓	UP	= 上
H.R.	= HOSE REEL 消防喉轆	U.P.	= UTILITY PLATFORM 工作平台
H.R. AT H/L	= HOSE REEL AT HIGH LEVEL 消防喉轆置於上方	W.M. / W.M.D.	= WATER METER CABINET 水錶箱
JACUZZI BATH	= 按摩浴缸		

REMARKS:
1. There may be architectural features and/or exposed pipes on external walls of some floors.
2. Common pipes exposed and/or enclosed in cladding are located at/adjacent to Balcony and/or Flat Roof and/or air-conditioning platform and/or external wall of some units.
3. There are ceiling bulkheads at Living Room / Dining Room, Bedrooms, Study, Stores, Corridors and/or Open Kitchen of some units for the air-conditioning system and/or Mechanical and Electrical services.
4. The internal ceiling height within some units may vary due to structural, architectural and/or decoration design variations.
5. Symbols of fittings and fitments shown on the floor plans, such as bathtubs, sink, water closets, jacuzzi, shower, sink counter, etc, are retrieved from the latest approved building plans and are for general indication only.
6. Balconies and utility platforms are non-enclosed area.

附註：
1. 部份樓層外牆設有建築裝飾及/或外露喉管。
2. 部份單位的露台及/或平台及/或冷氣機平台及/或外牆設有外露及/或內藏的公用喉管。
3. 部份單位客廳/飯廳、睡房、書房、儲物房、走廊及/或開放式廚房之假天花內裝置有冷氣及/或其他機電設備。
4. 部份單位之天花高度將會因應結構、建築設計及/或裝修設計上的需要而有差異。
5. 樓面平面圖上所顯示的形象裝置符號，例如浴缸、洗滌盆、坐廁、按摩池、花灑、洗滌盆櫃等乃擇自最新的經批准的建築圖則，只作一般性標誌。
6. 露台及工作平台為不可封閉的地方。

FLOOR PLANS OF RESIDENTIAL PROPERTIES IN THE DEVELOPMENT 發展項目的住宅物業的樓面平面圖

2/F PLAN 2樓平面圖



1. The floor-to-floor height of each residential property on 2/F is 3160mm.
2. The thickness of the floor slabs (excluding plaster) of each residential property on 2/F is 150mm and 200mm.
3. The internal areas of the residential properties on the upper floors will generally be slightly larger than those on the lower floors because of reducing thickness of the structural walls on the upper floors.

Notes:

- The dimensions of floor plans are all structural dimensions in millimetre.
- Please refer to Pages AL001 of this sales brochure for remarks, legend of the terms and abbreviations shown in this floor plan.

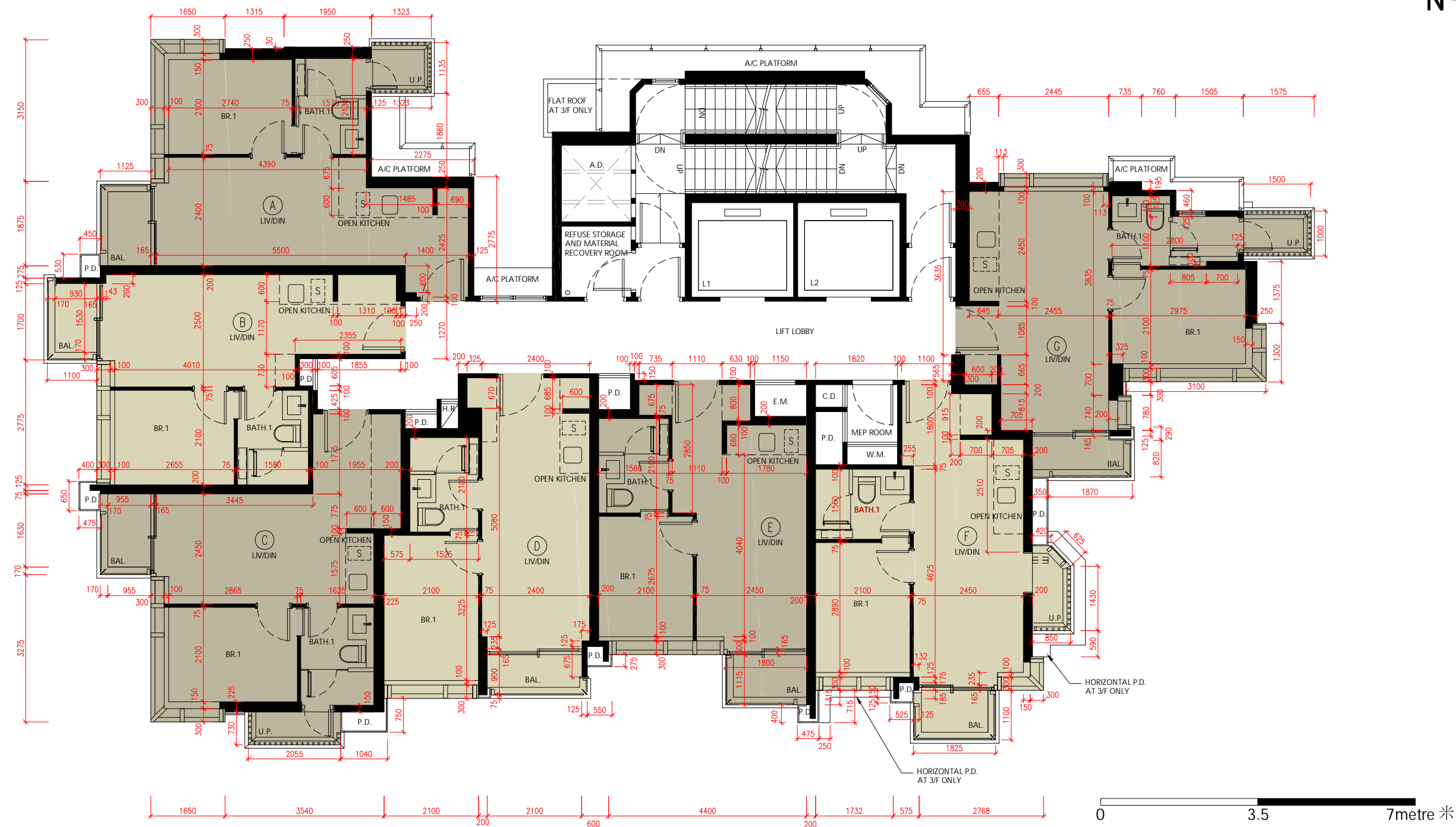
1. 2樓每個住宅物業的層與層之間的高度為 3160毫米。
2. 2樓每個住宅物業的樓板 (不包括灰泥) 的厚度為 150 毫米及 200 毫米。
3. 因住宅物業的較高樓層的結構牆的厚度遞減, 較高樓層的內部面積, 一般比較低層的內部面積稍大。

註:

- 平面圖之尺規所列數字以結構尺規毫米標示。
- 樓面平面圖中顯示之附註, 名詞及簡稱請參閱本售樓說明書第 AL001 頁。

FLOOR PLANS OF RESIDENTIAL PROPERTIES IN THE DEVELOPMENT 發展項目的住宅物業的樓面平面圖

3/F, 5/F - 12/F & 15/F - 23/F PLAN 3樓, 5樓至12樓及15樓至23樓平面圖



1. The floor-to-floor height of each residential property on 3/F, 5/F to 12/F & 15/F to 22/F is 3160mm, 23/F is 2960mm, 3160mm, 3260mm, 3285mm, 3360mm, 3410mm, 3430mm and 3460mm.
2. The thickness of the floor slabs (excluding plaster) of each residential property on 3/F, 5/F to 12/F & 15/F to 23/F is 150mm and 200mm.
3. The internal areas of the residential properties on the upper floors will generally be slightly larger than those on the lower floors because of reducing thickness of the structural walls on the upper floors.

Notes :

- The dimensions of floor plans are all structural dimensions in millimetre.
- Please refer to Pages AL001 of this sales brochure for remarks, legend of the terms and abbreviations shown in this floor plan.

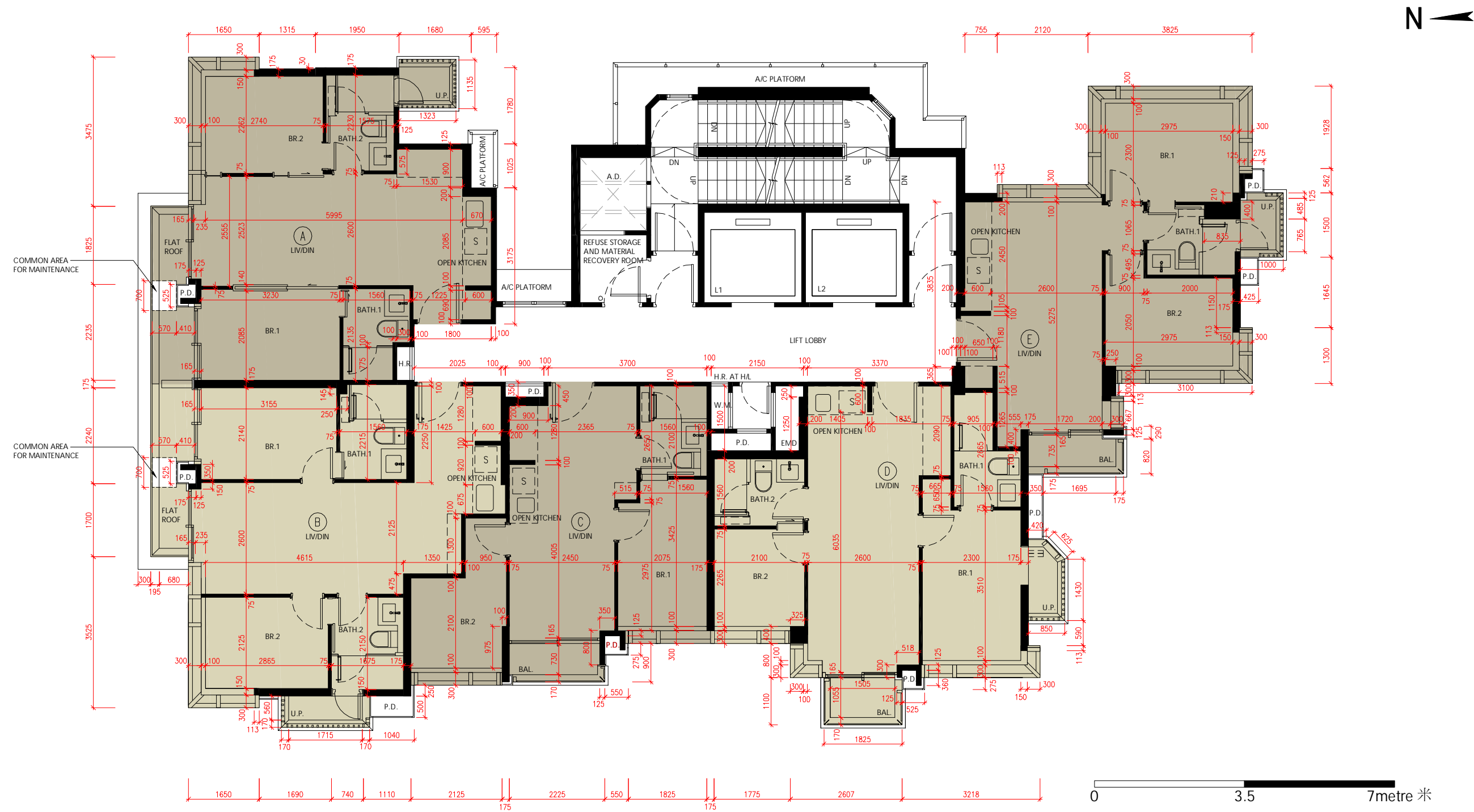
1. 3樓, 5樓至12樓及15樓至22樓每個住宅物業的層與層之間的高度為3160毫米, 23樓為2960毫米, 3160毫米, 3260毫米, 3285毫米, 3360毫米, 3410毫米, 3430毫米及3460毫米。
2. 3樓, 5樓至12樓及15樓至23樓每個住宅物業的樓板 (不包括灰泥) 的厚度為150毫米及200毫米。
3. 因住宅物業的較高樓層的結構牆的厚度遞減, 較高樓層的內部面積, 一般比較低層的內部面積稍大。

註 :

- 平面圖之尺規所列數字以結構尺規毫米標示。
- 樓面平面圖中顯示之附註, 名詞及簡稱請參閱本售樓說明書第AL001頁。

FLOOR PLANS OF RESIDENTIAL PROPERTIES IN THE DEVELOPMENT 發展項目的住宅物業的樓面平面圖

26/F PLAN 26樓平面圖



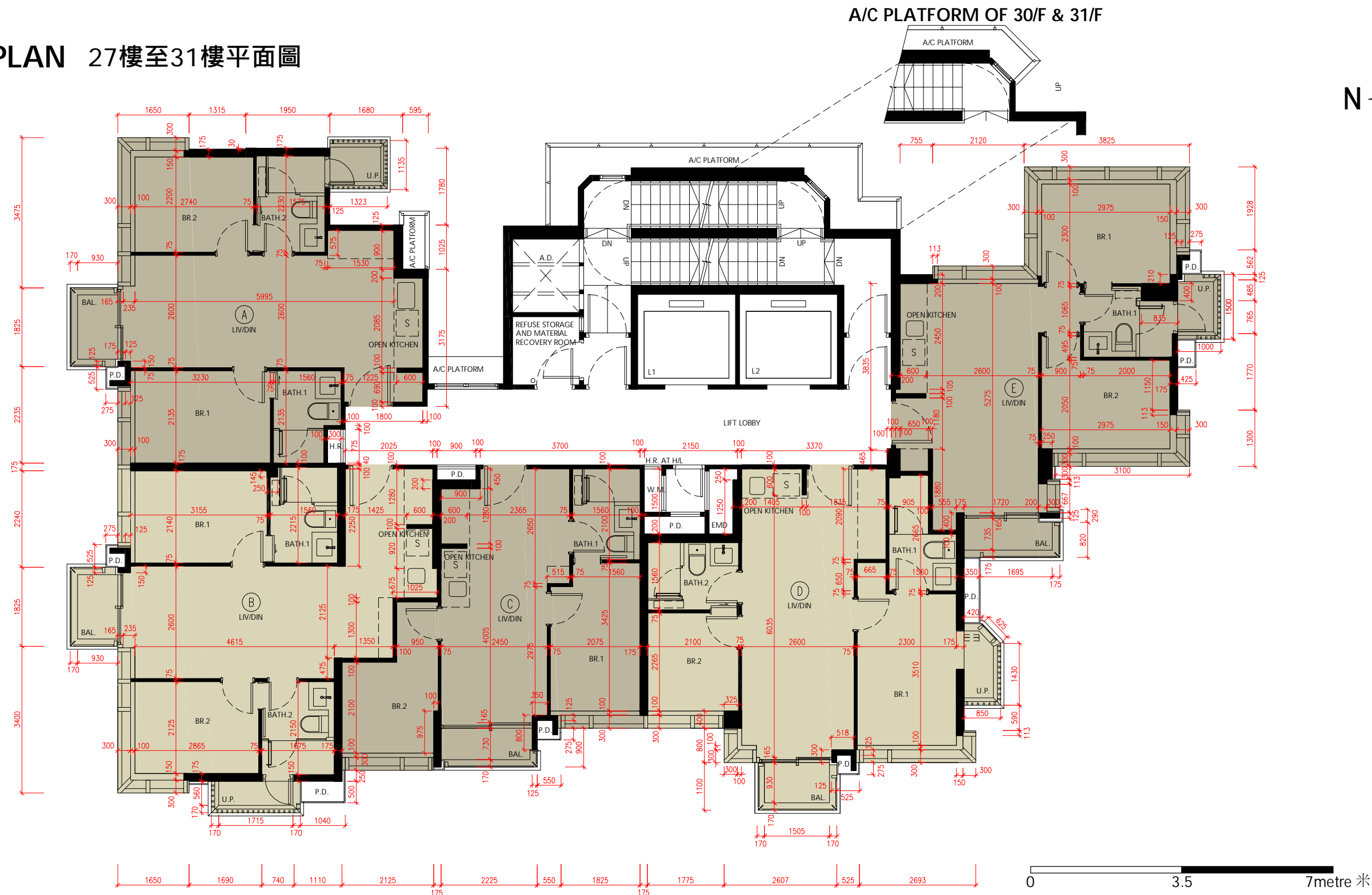
1. The floor-to-floor height of each residential property on 26/F is 3160mm.
2. The thickness of the floor slabs (excluding plaster) of each residential property on 26/F is 150mm and 200mm.
3. The internal areas of the residential properties on the upper floors will generally be slightly larger than those on the lower floors because of reducing thickness of the structural walls on the upper floors.

- Notes :
- The dimensions of floor plans are all structural dimensions in millimetre.
 - Please refer to Pages AL001 of this sales brochure for remarks, legend of the terms and abbreviations shown in this floor plan.

1. 26樓每個住宅物業的層與層之間的高度為 3160 毫米。
 2. 26樓每個住宅物業的樓板 (不包括灰泥) 的厚度為 150 毫米及 200 毫米。
 3. 因住宅物業的較高樓層的結構牆的厚度遞減, 較高樓層的內部面積, 一般比較低層的內部面積稍大。
- 註:
- 平面圖之尺規所列數字以結構尺規毫米標示。
 - 樓面平面圖中顯示之附註, 名詞及簡稱請參閱本售樓說明書第 AL001 頁。

FLOOR PLANS OF RESIDENTIAL PROPERTIES IN THE DEVELOPMENT 發展項目的住宅物業的樓面平面圖

27/F - 31/F PLAN 27樓至31樓平面圖



1. The floor-to-floor height of each residential property on 27/F to 30/F is 3160mm, 31/F is 2910mm, 3010mm, 3060mm, 3110mm, 3260mm, 3285mm, 3335mm, 3360mm, 3390mm, 3410mm, 3535mm, 3580mm, 3610mm, 3660mm, 3690mm, 3710mm and 3760mm.
2. The thickness of the floor slabs (excluding plaster) of each residential property on 27/F to 31/F is 150mm and 200mm.
3. The internal areas of the residential properties on the upper floors will generally be slightly larger than those on the lower floors because of reducing thickness of the structural walls on the upper floors.

Notes :

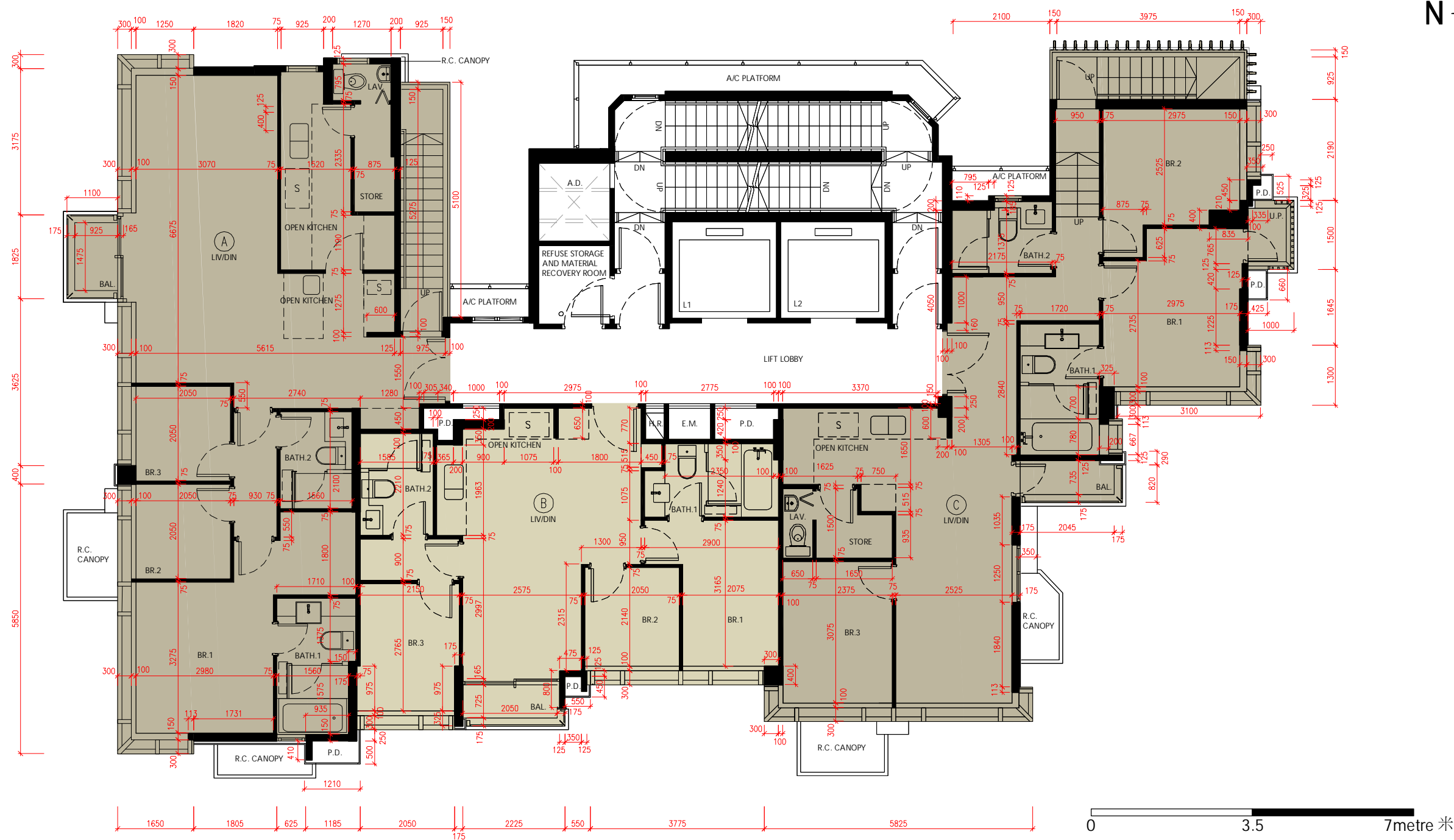
- The dimensions of floor plans are all structural dimensions in millimetre.
- Please refer to Pages AL001 of this sales brochure for remarks, legend of the terms and abbreviations shown in this floor plan.

1. 27樓至30樓每個住宅物業的層與層之間的高度為 3160毫米, 31樓為 2910毫米, 3010毫米, 3060毫米, 3110毫米, 3260毫米, 3285毫米, 3335毫米, 3360毫米, 3390毫米, 3410毫米, 3535毫米, 3580毫米, 3610毫米, 3660毫米, 3690毫米, 3710毫米 及 3760毫米。
2. 27樓至31樓每個住宅物業的樓板 (不包括灰泥) 的厚度為 150 毫米及 200 毫米。
3. 因住宅物業的較高樓層的結構牆的厚度遞減, 較高樓層的內部面積, 一般比較低層的內部面積稍大。

- 註 :
- 平面圖之尺規所列數字以結構尺規毫米標示。
 - 樓面平面圖中顯示之附註, 名詞及簡稱請參閱本售樓說明書第 AL001 頁。

FLOOR PLANS OF RESIDENTIAL PROPERTIES IN THE DEVELOPMENT 發展項目的住宅物業的樓面平面圖

32/F PENTHOUSE PLAN 32樓頂層單位平面圖



1. The floor-to-floor height of each residential property on 32/F Penthouse is 2510mm, 2645mm, 2885mm, 3500mm, 3575mm, 3625mm, 3635mm, 3685mm, 3800mm, 3850mm, 3875mm, 3900mm and 4000mm.
2. The thickness of the floor slabs (excluding plaster) of each residential property on 32/F Penthouse is 150mm and 200mm.
3. The internal areas of the residential properties on the upper floors will generally be slightly larger than those on the lower floors because of reducing thickness of the structural walls on the upper floors..

Notes :

- The dimensions of floor plans are all structural dimensions in millimetre.
- Please refer to Pages AL001 of this sales brochure for remarks, legend of the terms and abbreviations shown in this floor plan.

Remarks :

- Minor works or exempted works under the Buildings Ordinance have been made to residential property Flat A on 32/F. Please refer to the "as-is" layout plan on page AL006A for details.

1. 32樓頂層單位每個住宅物業的層與層之間的高度為 2510毫米, 2645毫米, 2885毫米, 3500毫米, 3575毫米, 3625毫米, 3635毫米, 3685毫米, 3800毫米, 3850毫米, 3875毫米, 3900毫米及4000毫米。
2. 32樓頂層單位每個住宅物業的樓板 (不包括灰泥) 的厚度為 150 毫米及 200 毫米。
3. 因住宅物業的較高樓層的結構牆的厚度遞減, 較高樓層的內部面積, 一般比較低層的內部面積稍大。

註 :

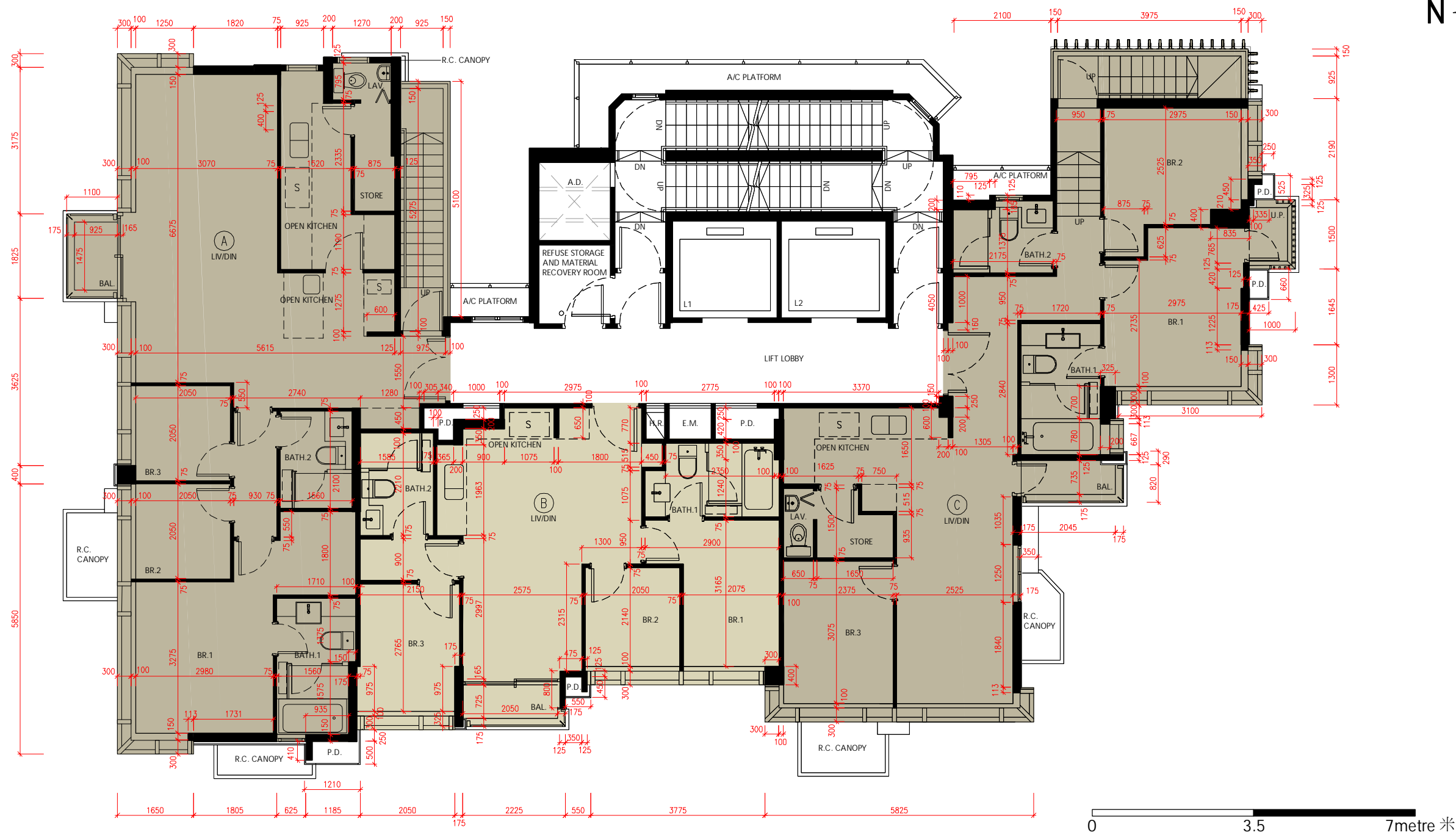
- 平面圖之尺規所列數字以結構尺規毫米標示。
- 樓面平面圖中顯示之附註, 名詞及簡稱請參閱本售樓說明書第 AL001 頁。

備註 :

- 第32樓A單位已施行<建築物條例>下的小型工程或獲豁免的工程。詳情請參閱AL006A頁之現狀平面圖。

FLOOR PLANS OF RESIDENTIAL PROPERTIES IN THE DEVELOPMENT 發展項目的住宅物業的樓面平面圖

32/F PENTHOUSE "AS-IS" LAYOUT PLAN 32樓頂層單位現狀平面圖



1. The floor-to-floor height of each residential property on 32/F Penthouse is 2510mm, 2645mm, 2885mm, 3500mm, 3575mm, 3625mm, 3635mm, 3685mm, 3800mm, 3850mm, 3875mm, 3900mm and 4000mm.
2. The thickness of the floor slabs (excluding plaster) of each residential property on 32/F Penthouse is 150mm and 200mm.
3. The internal areas of the residential properties on the upper floors will generally be slightly larger than those on the lower floors because of reducing thickness of the structural walls on the upper floors..

Notes :

- The dimensions of floor plans are all structural dimensions in millimetre.
- Please refer to Pages AL001 of this sales brochure for remarks, legend of the terms and abbreviations shown in this floor plan.

Remarks :

- This page is the additional information mentioned in the remarks on page AL006.

1. 32樓頂層單位每個住宅物業的層與層之間的高度為 2510毫米, 2645毫米, 2885毫米, 3500毫米, 3575毫米, 3625毫米, 3635毫米, 3685毫米, 3800毫米, 3850毫米, 3875毫米, 3900毫米及4000毫米。
2. 32樓頂層單位每個住宅物業的樓板 (不包括灰泥) 的厚度為 150 毫米及 200 毫米。
3. 因住宅物業的較高樓層的結構牆的厚度遞減, 較高樓層的內部面積, 一般比較低層的內部面積稍大。

註 :

- 平面圖之尺規所列數字以結構尺規毫米標示。
- 樓面平面圖中顯示之附註, 名詞及簡稱請參閱本售樓說明書第 AL001 頁。

備註 :

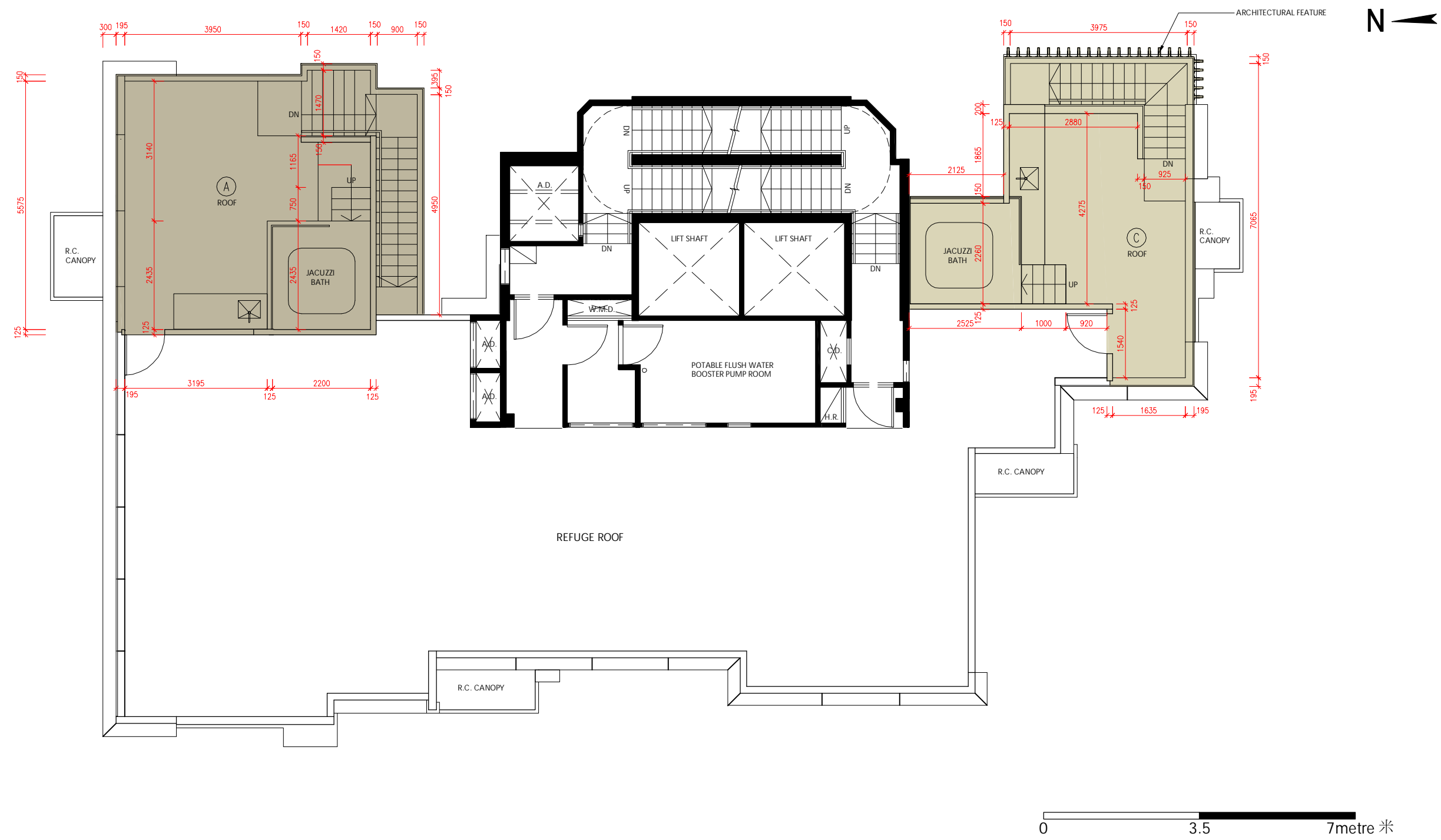
- 本頁是第 AL006 頁備註附加資料。

FLOOR PLANS OF RESIDENTIAL PROPERTIES IN THE DEVELOPMENT 發展項目的住宅物業的樓面平面圖

(This page is left blank intentionally. 此頁保留空白。)

FLOOR PLANS OF RESIDENTIAL PROPERTIES IN THE DEVELOPMENT 發展項目的住宅物業的樓面平面圖

ROOF FLOOR PLAN 天台平面圖



- 1. The floor-to-floor height of each residential property in different locations on roof : Not applicable.
- 2. The thickness of the floor slabs (excluding plaster) of each residential property in different locations on roof : Not applicable.
- 3. The internal areas of the residential properties on the upper floors will generally be slightly larger than those on the lower floors because of reducing thickness of the structural walls on the upper floors..

Notes :

- The dimensions of floor plans are all structural dimensions in millimetre.
- Please refer to Pages AL001 of this sales brochure for remarks, legend of the terms and abbreviations shown in this floor plan.

- 1. 天台每個住宅物業的層與層之間的高度在不同位置為：不適用。
- 2. 天台每個住宅物業的樓板 (不包括灰泥) 的厚度在不同位置為：不適用。
- 3. 因住宅物業的較高樓層的結構牆的厚度遞減，較高樓層的內部面積，一般比較低層的內部面積稍大。

註：

- 平面圖之尺規所列數字以結構尺規毫米標示。
- 樓面平面圖中顯示之附註, 名詞及簡稱請參閱本售樓說明書第 AL001 頁。