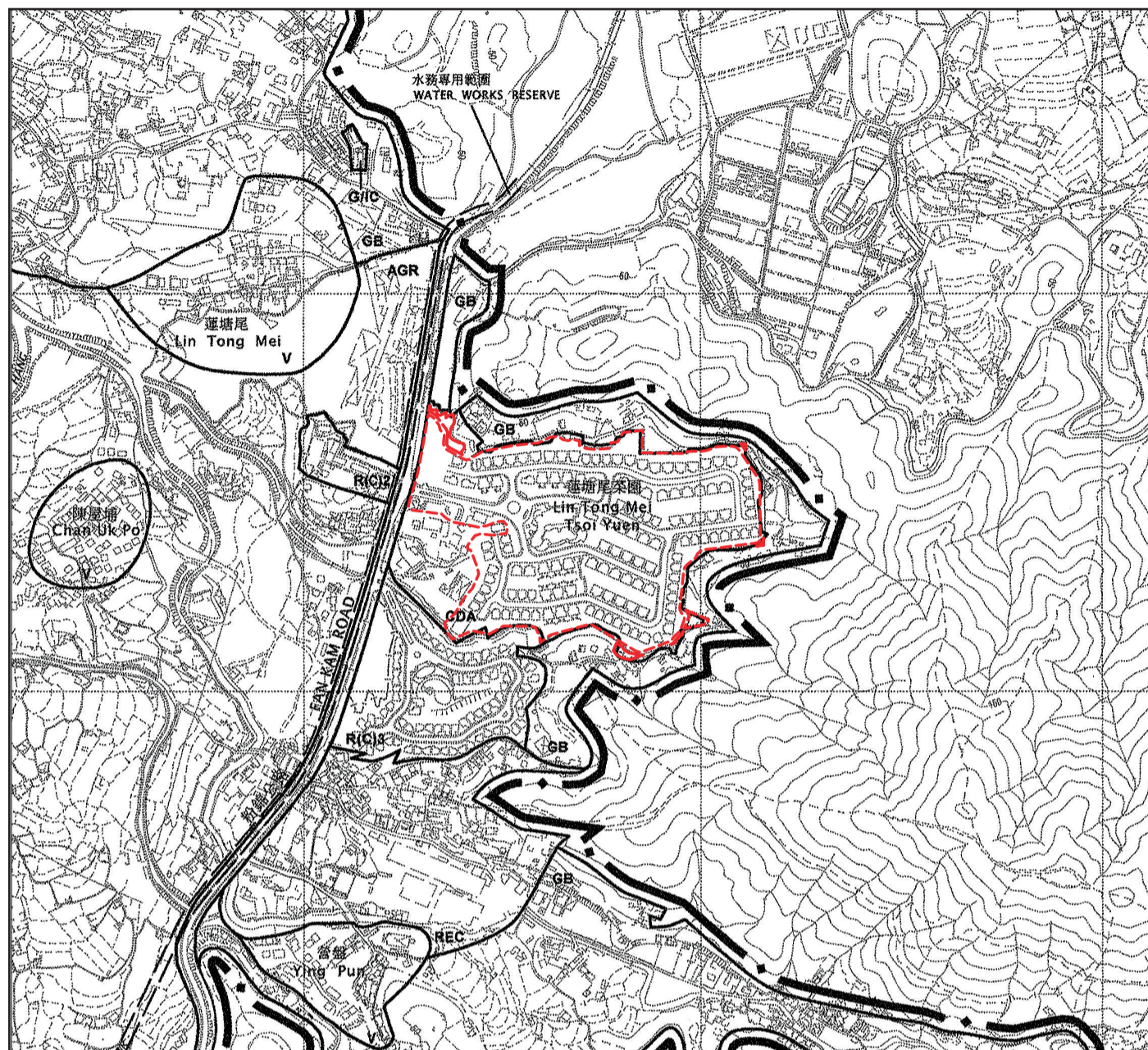


# 關於發展項目的分區計劃大綱圖

## OUTLINE ZONING PLAN RELATING TO THE DEVELOPMENT



歌賦嶺  
The Green

0M/米 500M/米

摘錄自2018年2月9日刊憲之古洞南分區計劃大綱核准圖，圖則編號為 S/NE-KTS/16，經處理以紅色顯示發展項目邊界線。  
Adopted from Approved Kwu Tung South Outline Zoning Plan No. S/NE-KTS/16 gazetted on 9<sup>th</sup> February 2018 with adjustment to show the Development boundary in red.

### 圖例 LEGEND

#### 地帶 Zones

- 綜合發展區 Comprehensive Development Area
- 住宅（丙類） Residential (Group C)
- 住宅（丁類） Residential (Group D)
- 鄉村式發展 Village Type Development
- 政府、機構或社區 Government, Institution or Community
- 休憩用地 Open Space
- 康樂 Recreation
- 農業 Agriculture
- 綠化地帶 Green Belt

CDA
R(C)
R(D)
V
G/IC
O
REC
AGR
GB

#### 交通 Communications

主要道路及路口 Major Road and Junction

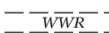


#### 其他 Miscellaneous

規劃範圍界線 Boundary of Planning Scheme



水務專用範圍 Water Works Reserve



#### 註:

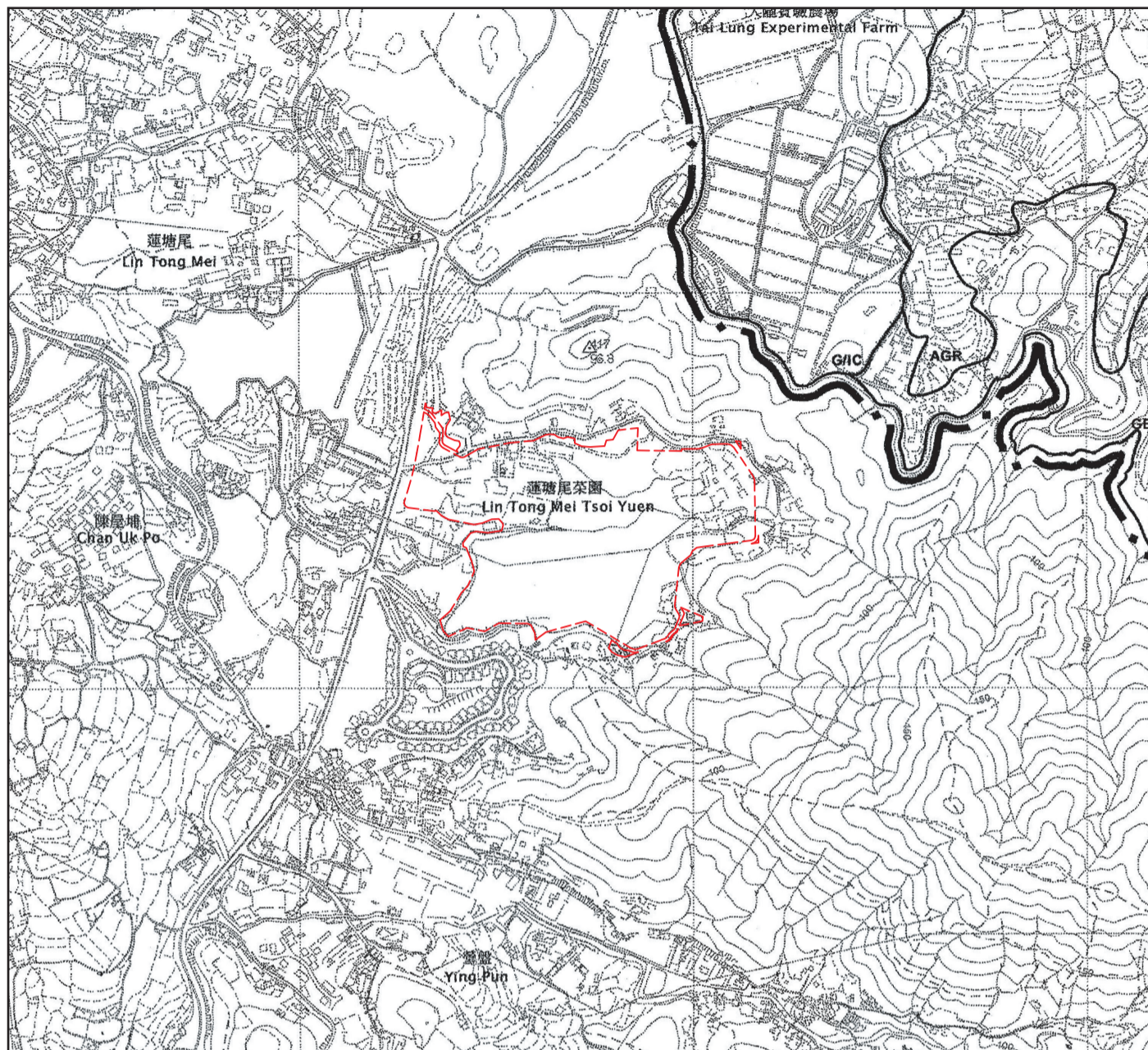
- 由於發展項目的邊界不規則的技術原因，此分區計劃大綱圖所顯示的範圍超過《一手住宅物業銷售條例》（第621章）的規定。

#### Note:

- Due to the technical reason that the boundary of the Development is irregular, this Outline Zoning Plan has shown more than the area required under the Residential Properties (First-hand Sales) Ordinance (Cap 621).

# 關於發展項目的分區計劃大綱圖

## OUTLINE ZONING PLAN RELATING TO THE DEVELOPMENT



歌賦嶺  
 The Green

0M/米  500M/米

摘錄自2006年10月27日刊憲之丙崗分區計劃大綱核准圖，圖則編號為 S/NE-PK/11，經處理以紅色顯示發展項目邊界線。  
 Adopted from the Approved Ping Kong Outline Zoning Plan No. S/NE-PK/11 gazetted on 27<sup>th</sup> October 2006 with adjustment to show the Development boundary in red.

### 圖例 LEGEND

#### 地帶 Zones

政府、機構或社區 Government, Institution or Community  
 農業 Agriculture  
 綠化地帶 Green Belt



#### 其他 Miscellaneous

規劃範圍界線 Boundary of Planning Scheme

註:

- 由於發展項目的邊界不規則的技術原因，此分區計劃大綱圖所顯示的範圍超過《一手住宅物業銷售條例》(第621章)的規定。

Note:

- Due to the technical reason that the boundary of the Development is irregular, this Outline Zoning Plan has shown more than the area required under the Residential Properties (First-hand Sales) Ordinance (Cap 621).