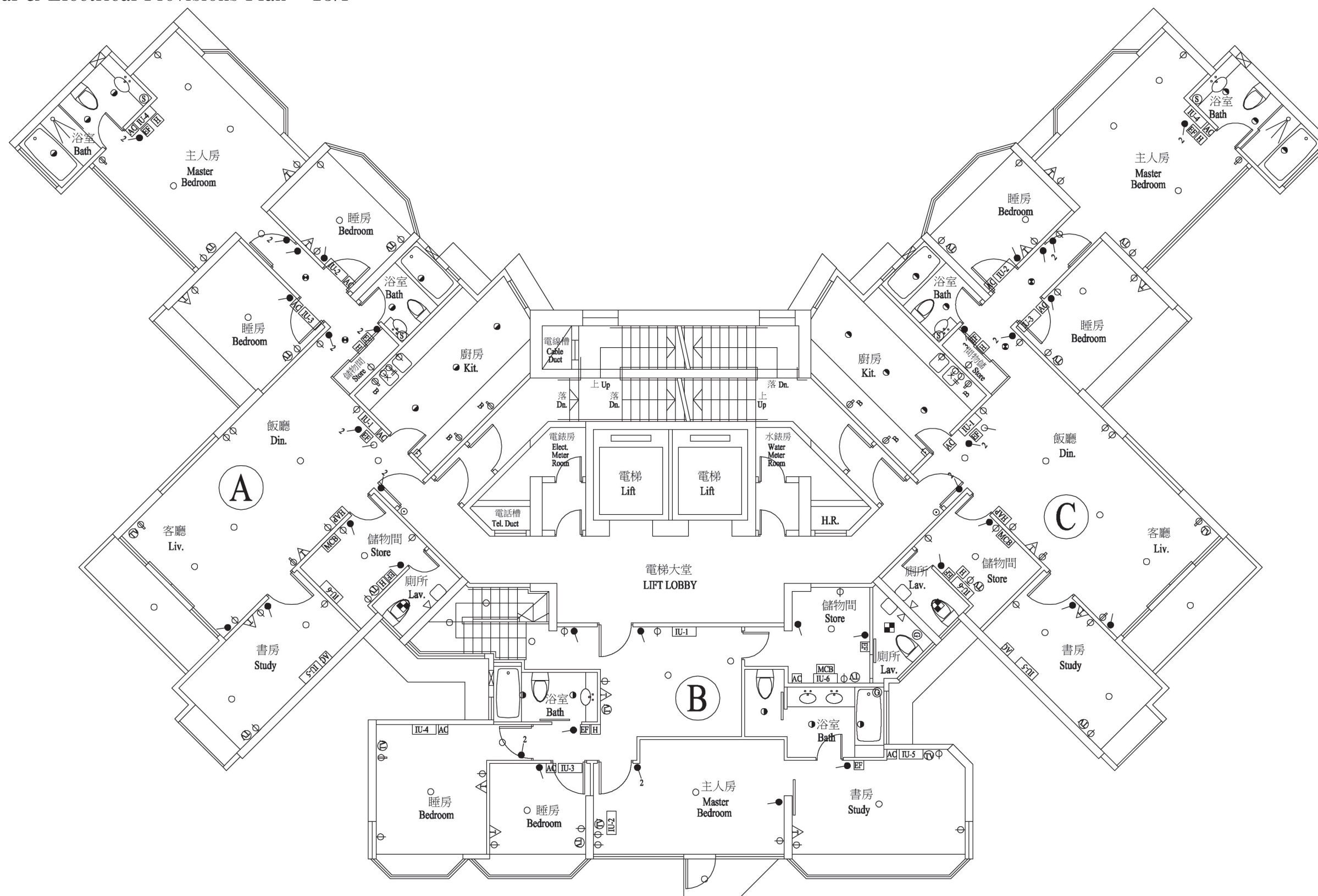


裝置、裝修物料及設備 FITTINGS, FINISHES AND APPLIANCES

機電裝置平面圖－15樓

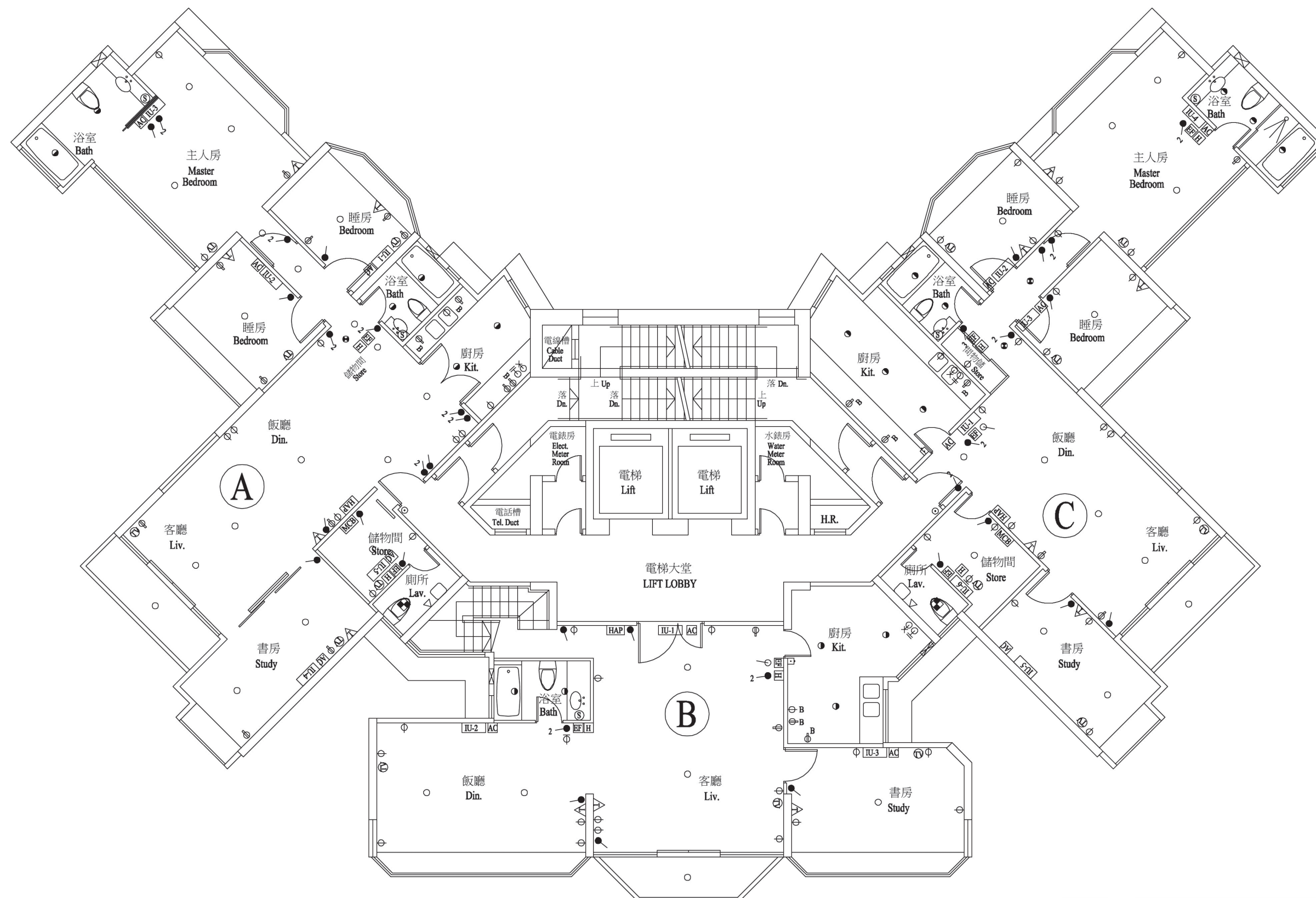
Mechanical & Electrical Provisions Plan – 15/F



裝置、裝修物料及設備 FITTINGS, FINISHES AND APPLIANCES

機電裝置平面圖－16樓

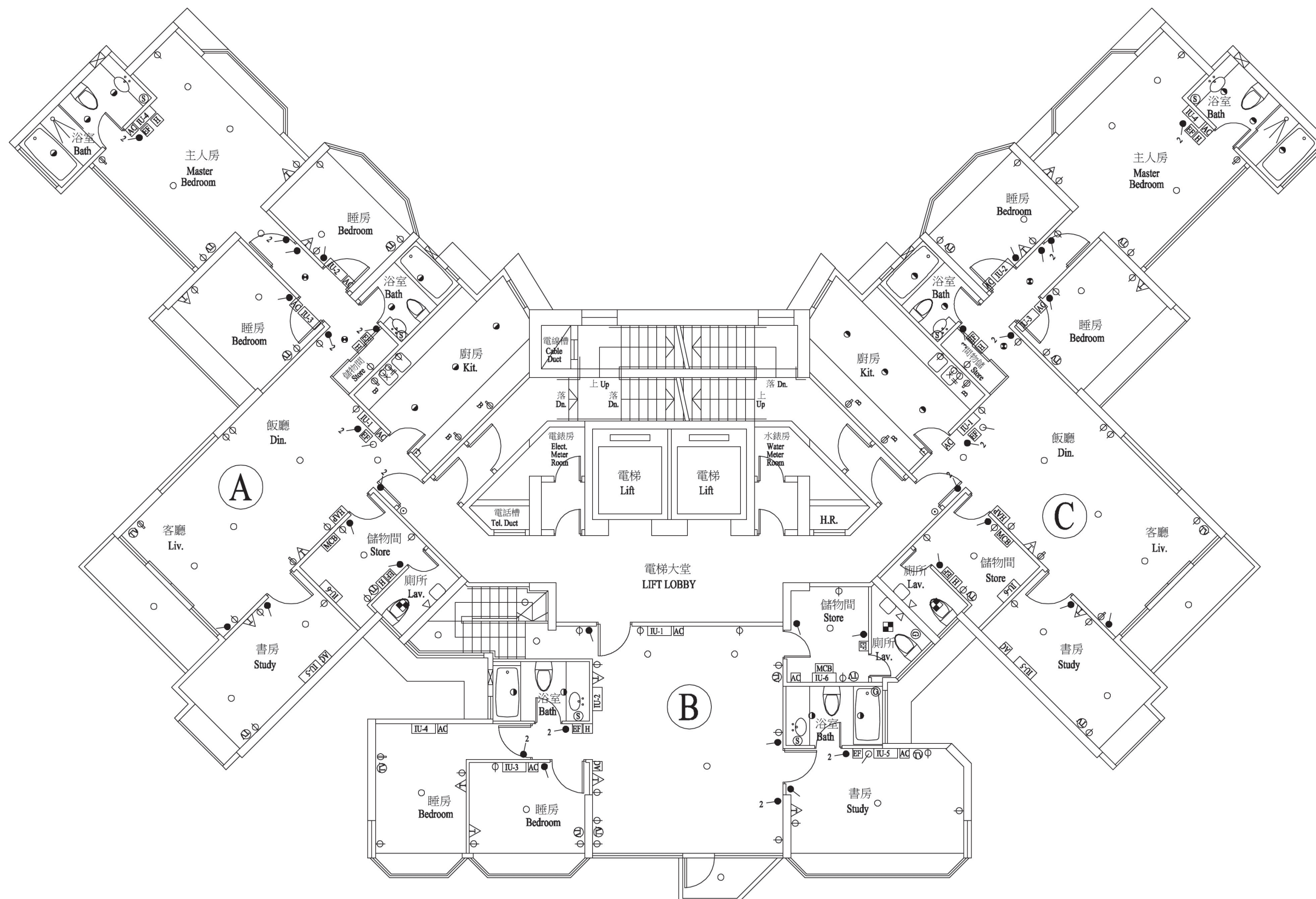
Mechanical & Electrical Provisions Plan – 16/F



裝置、裝修物料及設備 FITTINGS, FINISHES AND APPLIANCES

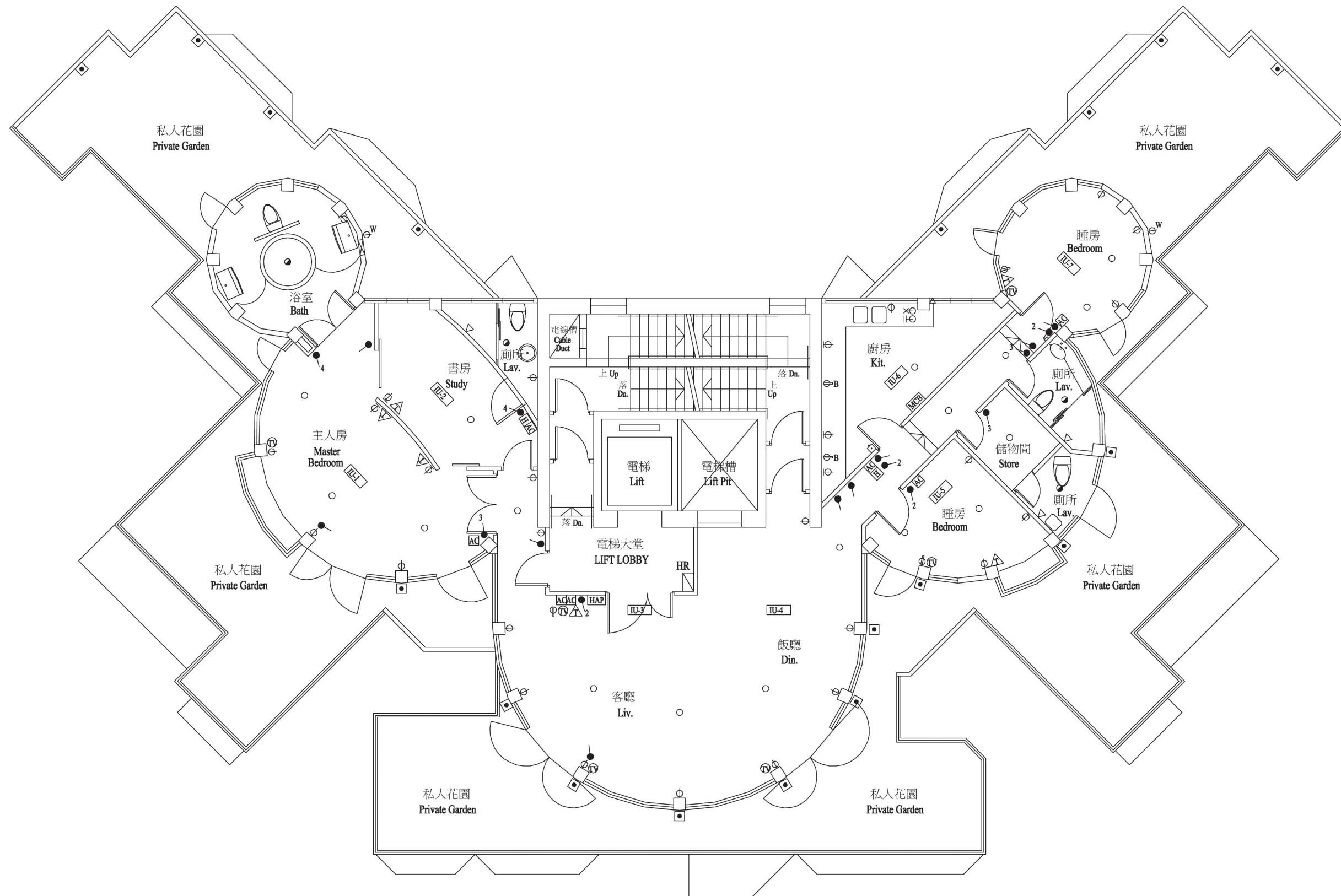
機電裝置平面圖－17樓

Mechanical & Electrical Provisions Plan – 17/F



FITTINGS, FINISHES AND APPLIANCES

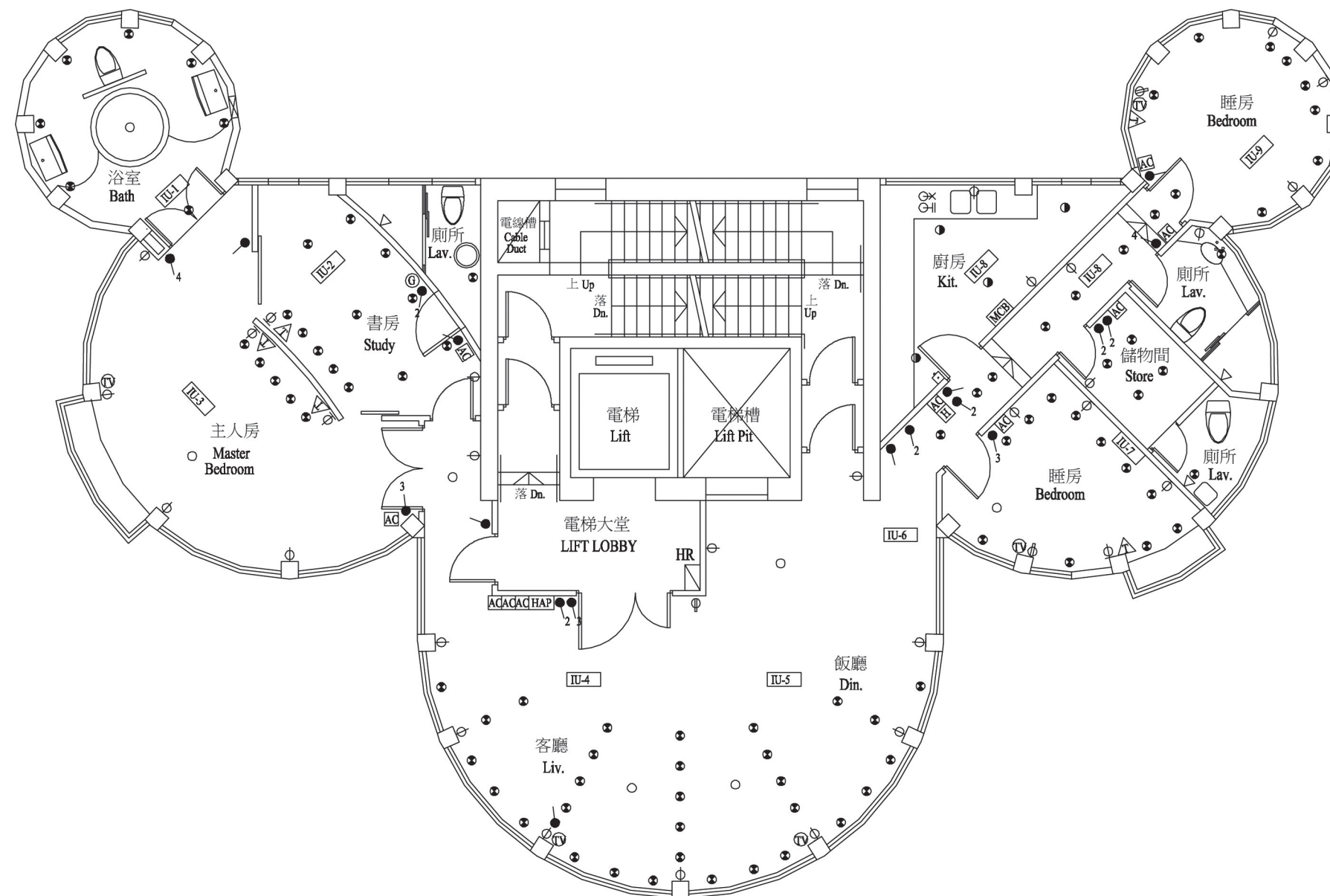
機電裝置平面圖－18樓
Mechanical & Electrical Provisions Plan – 18/F



裝置、裝修物料及設備 FITTINGS, FINISHES AND APPLIANCES

機電裝置平面圖－19樓

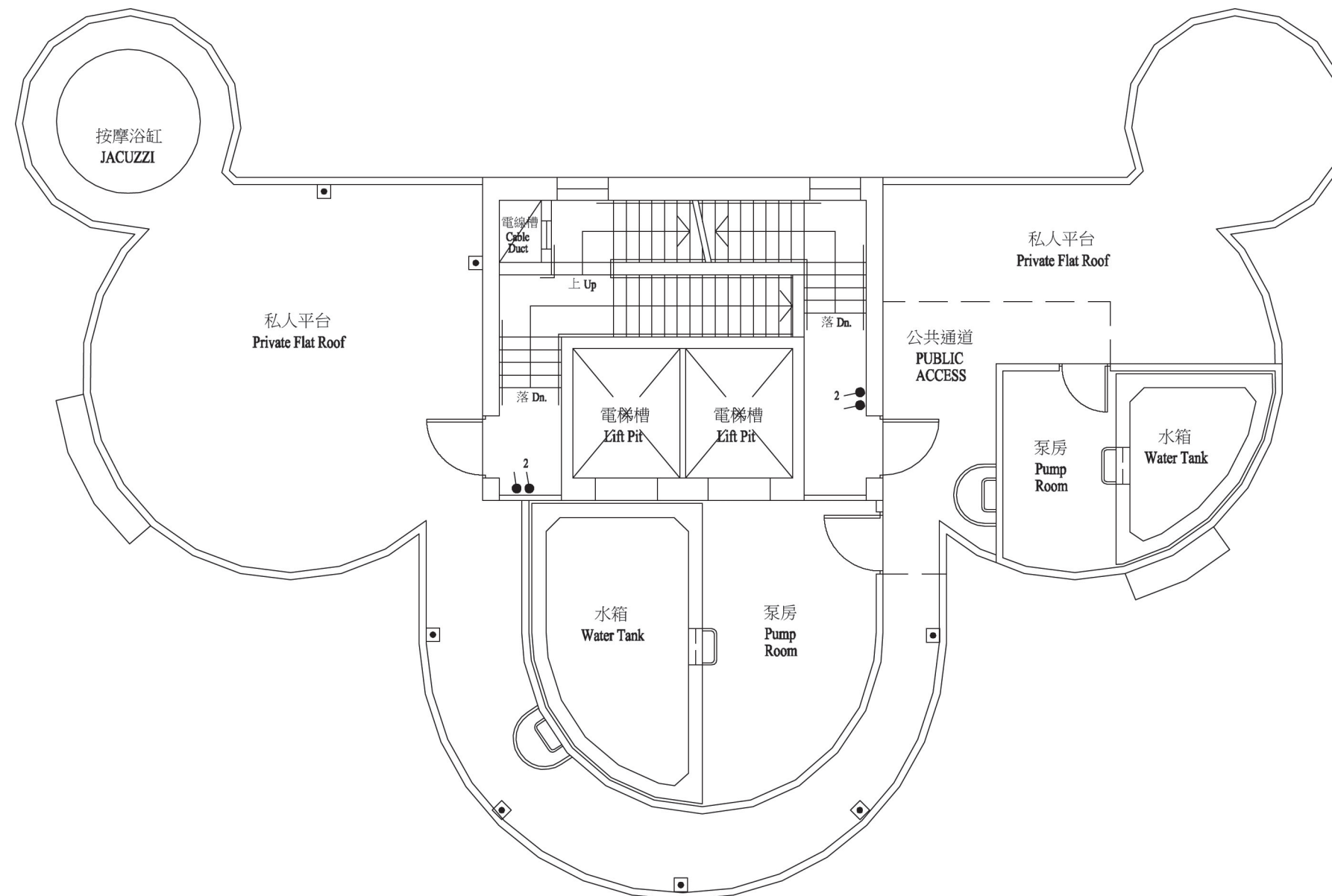
Mechanical & Electrical Provisions Plan – 19/F



裝置、裝修物料及設備 FITTINGS, FINISHES AND APPLIANCES

機電裝置平面圖－天台

Mechanical & Electrical Provisions Plan – Roof



裝置、裝修物料及設備
FITTINGS, FINISHES AND APPLIANCES

機電裝置說明圖例
Legend of E & M Provisions

一位一掣燈掣
10A 1 WAY 1 GANG LIGHTING SWITCH

二位一掣燈掣
10A 1 WAY 2 GANG LIGHTING SWITCH

三位一掣燈掣
10A 1 WAY 3 GANG LIGHTING SWITCH

一掣雙極開關掣
20A 1 WAY 1 GANG D.P. SWITCH

單位掣插座
13A SOCKET OUTLET

防水單位掣插座
13A WEATHERPROOF SOCKET OUTLET

雙位掣插座
13A TWIN SOCKET OUTLET

雙位掣插座高於桌面
13A TWIN SOCKET OUTLET AT BENCH TOP LEVEL

鬚刨掣插座
SHAVE OUTLET

總電掣箱
MCB BOARD

有掣雙極開關掣供冷氣
D.P. SWITCH WITH PILOT LIGHT FOR A/C UNITS

有掣雙極開關掣供抽氣扇
D.P. SWITCH WITH PILOT LIGHT FOR EXHAUST FAN UNITS

有掣雙極開關掣供煤氣熱水爐
D.P. SWITCH WITH PILOT LIGHT FOR GAS WATER HEATER UNITS

煤氣溫度掣
GAS WATER HEATER CONTROLLER

電視 / 電台天線插座
TV/FM OUTLET

電話插座
TELEPHONE OUTLET

門鈴
ELECTRIC DOOR BELL

門鈴按鈕
DOOR BELL PUSH BUTTON

智能控制屏
HOME AUTOMATION TOUCH SCREEN PAD WITH DOORPHONE FUNCTION

螺柱式燈座
SCREW TYPE LAMP HOLDER C/W 100W GLS LAMP

筒燈
DOWNLIGHT

射燈
SPOTLIGHT

光管
FLUO. TUBE

壁燈
WALL MOUNT LIGHT

戶外防水燈
WALL RECESSED LIGHT

室內冷氣機
INDOOR A/C UNIT

洗衣機去水位
DRAIN POINT FOR WASHING MACHINE

洗衣機來水位
WATER POINT FOR WASHING MACHINE

機電裝置說明表
Schedule of Mechanical & Electrical Provisions

物業的描述 Description of residential property		客廳／飯廳 Living Room/Dining Room				主人睡房／睡房及書房 Master Bedroom/Bedrooms and Study Room			
樓層 Floor	單位 Unit	電視／電台 天線插座 TV/FM Outlet	電話插座 Telephone Outlet	單位掣插座 13A Socket Outlet	雙位掣插座 13A Twin Socket Outlet	電視／電台 天線插座 TV/FM Outlet	電話插座 Telephone Outlet	單位掣插座 13A Socket Outlet	雙位掣插座 13A Twin Socket Outlet
1/F	Duplex A	3	3	15	2	3	3	11	—
	Duplex B	1	1	2	5	3	3	10	—
	Duplex C	2	4	8	9	2	3	4	6
	D	1	1	6	2	3	3	9	2
2/F	D	1	1	6	2	3	3	9	2
3/F	A	1	1	7	1	4	4	11	2
	B	1	1	5	1	3	3	9	—
	C	1	1	7	2	4	4	11	2
4/F	A	1	1	7	1	4	4	11	2
	B	1	1	6	1	3	3	10	—
	C	1	1	7	2	4	4	11	2
5/F	A	1	1	7	1	4	4	11	2
	B	1	1	6	1	3	3	10	—
	C	1	1	7	2	4	4	11	2
6/F	A	1	1	7	1	4	4	11	2
	B	1	1	6	1	3	3	10	—
	C	1	1	7	2	4	4	11	2

裝置、裝修物料及設備
FITTINGS, FINISHES AND APPLIANCES

物業的描述 Description of residential property		客廳／飯廳 Living Room/Dining Room				主人睡房／睡房及書房 Master Bedroom/Bedrooms and Study Room			
樓層 Floor	單位 Unit	電視／電台 天線插座 TV/FM Outlet	電話插座 Telephone Outlet	單位掣插座 13A Socket Outlet	雙位掣插座 13A Twin Socket Outlet	電視／電台 天線插座 TV/FM Outlet	電話插座 Telephone Outlet	單位掣插座 13A Socket Outlet	雙位掣插座 13A Twin Socket Outlet
7/F	A	1	1	7	1	4	4	11	2
	B	1	1	6	1	3	3	10	—
	C	1	1	7	2	4	4	11	2
8/F	A	1	1	7	1	4	4	11	2
	B	1	1	6	1	3	3	10	—
	C	1	1	7	2	4	4	11	2
9/F	A	1	1	7	1	4	4	11	2
	B	1	1	6	1	3	3	10	—
	C	1	1	7	2	4	4	11	2
10/F	A	1	1	6	2	4	4	10	3
	B	1	1	5	1	3	3	10	—
	C	1	1	7	2	4	4	11	2
11/F	A	1	1	8	2	4	4	10	2
	B	1	1	6	1	3	3	10	—
	C	1	1	6	2	4	4	11	2
12/F	A	1	1	7	2	4	4	11	1
	Duplex B	4	4	24	2	4	4	12	1
	C	1	1	7	2	4	4	12	1
13/F	A	1	1	7	2	4	4	11	1
	C	1	1	7	2	4	4	12	1
14/F	A	1	1	6	3	4	4	11	1
	Duplex B	3	3	14	2	5	4	13	1
	C	1	1	7	2	4	4	12	1

裝置、裝修物料及設備
FITTINGS, FINISHES AND APPLIANCES

物業的描述 Description of residential property		客廳／飯廳 Living Room/Dining Room				主人睡房／睡房及書房 Master Bedroom/Bedrooms and Study Room			
樓層 Floor	單位 Unit	電視／電台 天線插座 TV/FM Outlet	電話插座 Telephone Outlet	單位掣插座 13A Socket Outlet	雙位掣插座 13A Twin Socket Outlet	電視／電台 天線插座 TV/FM Outlet	電話插座 Telephone Outlet	單位掣插座 13A Socket Outlet	雙位掣插座 13A Twin Socket Outlet
15/F	A	1	1	7	2	4	4	11	1
	C	1	1	6	3	4	4	12	1
16/F	A	1	1	6	2	4	4	2	8
	Duplex B	4	4	23	2	4	4	11	1
	C	1	1	7	2	4	4	12	1
17/F	A	1	1	7	2	4	4	11	1
	C	1	1	8	2	4	4	12	1
18/F	A	2	1	10	1	3	5	12	2
19/F	A	2	–	11	1	3	5	15	2

裝置、裝修物料及設備

1. 室外裝修物料

a.	外牆	牆磚
b.	窗	綠色塗漆玻璃
c.	窗台	拋光花崗岩板
d.	露台及工作平台	(i) 露台及工作平台設有鋼化玻璃欄板或金屬欄板 牆身：露台及工作平台－平滑抹面混凝土，鋪上吸嘴瓷磚 天花：露台及工作平台－室外用油漆 地面：露台及工作平台－防滑磚及鋪上戶外木裝飾
		(ii) 露台及工作平台有上蓋遮蓋

2. 室內裝修物料

a.	升降機大堂(地庫1層)	牆身：雲石／花崗岩磚 天花：鋁板，裝嵌直筒燈 地面：雲石／花崗岩磚
	升降機大堂(地下)	牆身：雲石／花崗岩磚 天花：石膏板懸空式假天花，裝嵌直筒燈 地面：雲石／花崗岩磚
b.	典型單位浴室 (1樓至18樓)(1樓及2樓C，11樓A除外)	牆身：雲石／花崗岩磚 天花：鋁板，裝嵌直筒燈 地面：雲石／花崗岩磚
c.	典型及特色單位廚房 (1樓至19樓)	牆身：雲石／花崗岩磚 天花：鋁板，裝嵌直筒燈 地面：雲石／花崗岩磚
d.	特式單位浴室 (1樓至2樓單位C，11樓單位A及19樓)	牆身：雲石／花崗岩磚／鏡面裝飾 天花：鋁板／石膏板懸空式假天花，裝嵌直筒燈 地面：雲石／花崗岩磚／馬賽克

FITTINGS, FINISHES AND APPLIANCES

1. Exterior Finishes

a.	External Wall	Wall Tiles
b.	Window	Green Tinted Glass
c.	Bay Window	Polished Granite Slab
d.	Balcony and Utility Platform	(i) Balcony and Utility Platform are fitted with tempered glass balustrade or metal balustrade Walls: Balcony and Utility Platform – smooth troweled conc. With nosing tiles Ceiling: Balcony and Utility Platform – external paint Floor: Balcony and Utility Platform – non-slip homogenous tiles decorated with wood plastic composite
		(ii) Balcony and Utility Platform are covered

2. Interior Finishes

a.	Lift Lobby (LG1/F)	Walls: marble / granite tile Ceiling: alum. panel with down light Floor: marble / granite tile
	Lift Lobby (G/F)	Walls: marble / granite tile Ceiling: plaster board suspended false ceiling with down light Floor: marble / granite tile
b.	Typical Unit Bathroom (1/F to 18/F) (except 1/F & 2/F Flat C, 11/F Flat A)	Walls: marble / granite tile Ceiling: alum. Panel with down light Floor: marble / granite tile
c.	Typical and Deluxe Unit Kitchen (1/F to 19/F)	Walls: marble / granite tile Ceiling: alum. Panel with down light Floor: marble / granite tile
d.	Deluxe Unit Bathroom (1/F & 2/F Flat C, 11/F Flat A & 19/F)	Walls: marble / granite tile / glass feature Ceiling: alum. Panel / gypsum board suspended false ceiling with down light Floor: marble / granite tile / mosaic tiles

裝置、裝修物料及設備 FITTINGS, FINISHES AND APPLIANCES

3. 室內裝置

a.	大門 (1樓至19樓)	防火堅固實心塑料門，裝有防盜眼、閉門器、門鎖及門頂
	睡房門 (1樓至19樓)	木飾面空心木門，裝有門鎖及門頂
	浴室門 (1樓至19樓)	木飾面空心木門，裝有門鎖及門頂
b.	浴室 (1樓至17樓) (洗手間除外)	櫃台及潔具及裝置，包括洗手盤、混合水龍頭、浴缸混合水龍頭及花灑套裝、浴缸、座廁、煤氣熱水爐、鏡櫃、玻璃燈光裝置及抽氣扇 電器供應及品牌名稱請見「電器附表」
	浴室 (18樓至19樓) (洗手間除外)	櫃台及潔具及裝置，包括洗手盤、混合水龍頭、浴缸混合水龍頭及花灑套裝、浴缸、座廁、煤氣熱水爐(只限主人浴室)、電熱水爐(其他浴室)、洗手盆櫃、玻璃燈光裝置及抽氣扇 電器供應及品牌名稱請見「電器附表」
	洗手間 (1樓至19樓)	混合水龍頭及花灑套裝、洗手盤及混合水龍頭、電熱水爐、抽氣扇、座廁及鏡 電器供應及品牌名稱請見「電器附表」
c.	典型及特色單位廚房(1樓至19樓) (18樓除外)	供應附櫃門廚櫃、盥洗盆混合水龍頭、內置煤氣煮食爐、抽油煙機、冰箱、洗衣／乾衣機、微波爐、抽氣扇、煤氣熱水爐及焗爐(只限19樓) 電器供應及品牌名稱請見「電器附表」
	18樓廚房	供應附櫃門廚櫃、洗手盤及混合水龍頭
d.	起居室／飯廳／睡房及儲物室	木飾門空心木門，裝有門鎖及門頂 電器供應及品牌名稱請見「電器附表」
e.	電話	起居室／飯廳及睡房設有電話出線位 連接點位置及數目請見「機器及電器供應圖」
f.	天線	起居室／飯廳及睡房設有供本地電視／收音機使用的電視／收音機插座 連接點位置及數目請見「機器及電器供應圖」
g.	電器裝置	電燈及電源位以暗線方式裝設。住宅單位內設有小型斷路器配電箱供應單相電力 請見「機器及電器供應圖」
h.	煤氣供應	設有煤氣錶連供氣喉管，連接煤氣煮食爐及煤氣熱水爐(所有單位的煤氣錶設於廚房)
i.	洗衣機連接點	廚房設有洗衣機去水位及入水位 請見「機器及電器供應圖」
j.	供水	以暗喉方式透過銅管供應冷水，及半硬隔熱銅管供應熱水。浴室及廚房的熱水由設於浴室及廚房的煤氣／電熱水爐供應

裝置、裝修物料及設備 FITTINGS, FINISHES AND APPLIANCES

3. Interior Fittings

a.	Main Entrance Door (1/F to 19/F)	Fire-rated solid core plastic laminated door, fitted with eye view, door closer, lockset and door stopper
	Bedroom Door (1/F to 19/F)	Hollow core timber veneered door, fitted with lockset and door stopper
	Bathroom Door (1/F to 19/F)	Hollow core timber veneered door, fitted with lockset and door stopper
b.	Bathroom (1/F to 17/F) (except lavatory)	Countertop and sanitary wares and fittings include, wash basin, mixer, bath mixer & shower set, bathtub, water closet, gas water heater, mirror cabinet, glass lighting fixtures and exhaust fan For appliances provision and brand names, please refer to “Appliance Schedule”
	Bathroom (18/F to 19/F) (except lavatory)	Countertop and sanitary wares and fittings include, wash basin, mixer, bath mixer & shower set, bathtub, water closet, gas water heater (Master Bathroom only), electric water heaters (other Bathrooms), basin cabinet, glass lighting fixtures and exhaust fan For appliances provision and brand names, please refer to “Appliance Schedule”
	Lavatory (1/F to 19/F)	Shower set & mixer, wash basin & mixer, electric water heater, exhaust fan, water closet and mirror For appliances provision and brand names, please refer to “Appliance Schedule”
c.	Kitchen at Typical and Deluxe Unit (1/F to 19/F) (except 18/F)	Cabinet with door panel, sink, mixer, built-in gas cooker, cooker hood, refrigerator, washer and dryer, microwave oven, exhaust fan, gas water heater and oven (19/F only) are provided For appliances provision and brand names, please refer to “Appliances Schedule”
	Kitchen at 18/F	Cabinet with door panel, sink and mixer
d.	Living/dining room/bedroom and store room	Hollow core timber veneered door, fitted with lockset and door stopper For appliances provision and brand names, please refer to “Appliances Schedule”
e.	Telephone	Telephone outlets are provided for living/dining room and bedrooms For location and number of connection points, please refer to “Mechanical & Electrical Provision Plan”
f.	Aerials	TV/FM outlets for local TV/FM radio provided for living/dining room and bedrooms For location and number of connection points, please refer to “Mechanical & Electrical Provision Plan”
g.	Electrical Installations	Concealed conduit wiring for lighting and power point are provided. Single phase electricity supply with miniature circuit breaker distribution board is provided in residential units Please refer to “Mechanical & Electrical Provision Plan”
h.	Gas Supply	Gas meter with gas supply pipe is provided and connected to gas cooker and gas water heater (Gas meter in kitchen for all units)
i.	Washing Machine Connection Point	Drain point and water point are provided for washing machine in kitchen. Please refer to “Mechanical & Electrical Provision Plan”
j.	Water Supply	Concealed copper water pipes for cold water supply and half hard copper water pipes with thermal insulation for hot water supply. Hot water supply to bathroom and kitchen is provided by gas/electric water heater installed in bathroom and kitchen

裝置、裝修物料及設備 FITTINGS, FINISHES AND APPLIANCES

4. 其他

a.	升降機 (LG1 至 18 樓及 LG1 至 19 樓)	設有兩部升降機。載客升降機內部以天然石頭、玻璃、不銹鋼及塑膠夾板裝飾
b.	水錶／電錶／煤氣錶	各單位設有煤氣錶，而各單位的水錶及電錶設於各住宅樓層的公共錶房

特色單位 19 樓的電器附表

位置	電器	適用單位	品牌	型號
起居室／飯廳／睡房及儲物室	分體式空調	—	東芝	
廚房	煤氣煮食爐	—	TGC	RB3GVB
	抽油煙機	—	西門子	
	電熱水爐	—	斯寶亞創	
	微波爐	—	西門子	HF25G560
	洗衣／乾衣機	—	西門子	Wash & Dry 1641
	冰箱	—	西門子	K1385SA501E
	焗爐	—	西門子	
浴室	煤氣熱水爐	—	TGC	TGW168D
洗手間	電熱水爐	—	斯寶亞創	

5. 複式單位 17 樓至 16 樓、15 樓至 14 樓及 13 樓至 12 樓 (單位 B) 的電器附表

位置	電器	適用單位	品牌	型號
起居室／飯廳／睡房及儲物室	分體式空調	所有單位	開利	
廚房	煤氣煮食爐	16 樓、14 樓及 12 樓	TGC	RB3GVB
	抽油煙機	16 樓、14 樓及 12 樓	西門子	
	抽氣扇	16 樓、14 樓及 12 樓	Xpelair	90800AW
	煤氣熱水爐	16 樓、14 樓及 12 樓	TGC	NJW220TFQL
	電熱水爐	16 樓、14 樓及 12 樓	斯寶亞創	
	微波爐	16 樓、14 樓及 12 樓	西門子	HF25G560
	洗衣／乾衣機	16 樓、14 樓及 12 樓	西門子	Wash & Dry 1641
	冰箱	16 樓、14 樓及 12 樓	西門子	K1385SA501E
浴室	抽氣扇	所有單位	Xpelair	90800AW
	煤氣熱水爐	所有單位	TGC	TGW168D/TGW128D
洗手間	抽氣扇	17 樓、15 樓及 13 樓	Xpelair	90800AW
	電熱水爐	17 樓、15 樓及 13 樓	斯寶亞創	

裝置、裝修物料及設備 FITTINGS, FINISHES AND APPLIANCES

4. Miscellaneous

a.	Lifts (LG1 – 18/F & LG1 – 19/F)	Two lifts to be installed. Passenger lift car interior finished with natural stone, glass, stainless steel and plastic laminated panel
b.	Water/Electricity/Gas Meters	Gas meter is provided in individual units while separate meters of water and electricity for each individual unit are provided in common meter rooms on respective residential floors

Appliances Schedule for Deluxe Unit 19/F

Location	Appliances	Units apply	Brand	Model No.
Living/Dining/Bedroom/Store	Split type air-conditioner	–	Toshiba	
Kitchen	Gas Cooker	–	TGC	RB3GVB
	Cooker Hood	–	Siemens	
	Electric Water Heater	–	Stiebel Eltron	
	Microwave Oven	–	Siemens	HF25G560
	Washer/Dryer	–	Siemens	Wash & Dry 1641
	Refrigerator	–	Siemens	K1385SA501E
	Oven	–	Siemens	
Bathroom	Gas Water Heater	–	TGC	TGW168D
Lavatory	Electric Water Heater	–	Stiebel Eltron	

5. Appliances Schedule for Duplex Units 17/F-16/F, 15/F-14/F & 13/F-12/F (Unit B)

Location	Appliances	Units apply	Brand	Model No.
Living/Dining/Bedroom/Store	Split type air-conditioner	For all units	Carrier	
Kitchen	Gas Cooker	For 16/F, 14/F & 12/F	TGC	RB3GVB
	Cooker hood	For 16/F, 14/F & 12/F	Siemens	
	Exhaust Fan	For 16/F, 14/F & 12/F	Xpelair	90800AW
	Gas Water Heater	For 16/F, 14/F & 12/F	TGC	NJW220TFQL
	Electric Water Heater	For 16/F, 14/F & 12/F	Stiebel Eltron	
	Microwave Oven	For 16/F, 14/F & 12/F	Siemens	HF25G560
	Washer/Dryer	For 16/F, 14/F & 12/F	Siemens	Wash & Dry 1641
	Refrigerator	For 16/F, 14/F & 12/F	Siemens	K1385SA501E
Bathroom	Exhaust Fan	For all units	Xpelair	90800AW
	Gas Water Heater	For all units	TGC	TGW168D/TGW128D
Lavatory	Exhaust Fan	For 17/F, 15/F & 13/F	Xpelair	90800AW
	Electric Water Heater	For 17/F, 15/F & 13/F	Stiebel Eltron	

裝置、裝修物料及設備 FITTINGS, FINISHES AND APPLIANCES

6. 典型單位 17 樓至 3 樓 (單位 A 及 C) 的電器附表

位置	電器	適用單位	品牌	型號
起居室／飯廳／睡房及儲物室	分體式空調	所有單位	開利	
廚房	煤氣煮食爐	所有單位	TGC	RB3GVB
	抽油煙機	所有單位	西門子	
	抽氣扇	所有單位	Xpelair	90800AW
	電熱水爐	所有單位	斯寶亞創	
	微波爐	所有單位	西門子	HF25G560
	洗衣／乾衣機	所有單位	西門子	Wash & Dry 1641
	冰箱	所有單位	西門子	K1385SA501E
浴室	抽氣扇	所有單位 (16 樓單位 A，主廁除外)	Xpelair	90800AW
	煤氣熱水爐	所有單位	TGC	TGW168D/TGW128D
洗手間	抽氣扇	所有單位	Xpelair	90800AW
	電熱水爐	所有單位	斯寶亞創	

7. 典型單位 11 樓至 3 樓 (單位 B) 的電器附表

位置	電器	適用單位	品牌	型號
起居室／飯廳／睡房及儲物室	分體式空調	所有單位	開利	
廚房	煤氣煮食爐	所有單位	TGC	RB3GVB
	抽油煙機	所有單位	西門子	
	抽氣扇	所有單位	Xpelair	90800AW
	煤氣熱水爐	所有單位	TGC	
	電熱水爐	所有單位	斯寶亞創	
	微波爐	所有單位	西門子	HF25G560
	洗衣／乾衣機	所有單位	西門子	Wash & Dry 1641
	冰箱	所有單位	西門子	K1385SA501E
浴室	抽氣扇	所有單位	Xpelair	90800AW
	煤氣熱水爐	所有單位 (浴室 2)	TGC	TGW168D/TGW128D
洗手間	抽氣扇	所有單位	Xpelair	90800AW
	電熱水爐	所有單位	斯寶亞創	

裝置、裝修物料及設備 FITTINGS, FINISHES AND APPLIANCES

6. Appliances Schedule for Typical Units 17/F to 3/F (Unit A & C)

Location	Appliances	Units apply	Brand	Model No.
Living/Dining/Bedroom/Store	Split type air-conditioner	For all units	Carrier	
Kitchen	Gas Cooker	For all units	TGC	RB3GVB
	Cooker Hood	For all units	Siemens	
	Exhaust Fan	For all units	Xpelair	90800AW
	Electric Water Heater	For all units	Stiebel Eltron	
	Microwave Oven	For all units	Siemens	HF25G560
	Washer/Dryer	For all units	Siemens	Wash & Dry 1641
	Refrigerator	For all units	Siemens	K1385SA501E
Bathroom	Exhaust Fan	For all units (except 16/F Unit A Master Bathroom)	Xpelair	90800AW
	Gas Water Heater	For all units	TGC	TGW168D/TGW128D
Lavatory	Exhaust Fan	For all units	Xpelair	90800AW
	Electric Water Heater	For all units	Stiebel Eltron	

7. Appliances Schedule for Typical Units 11/F to 3/F (Unit B)

Location	Appliances	Units apply	Brand	Model No.
Living/Dining/Bedroom/Store	Split type air-conditioner	For all units	Carrier	
Kitchen	Gas Cooker	For all units	TGC	RB3GVB
	Cooker Hood	For all units	Siemens	
	Exhaust Fan	For all units	Xpelair	90800AW
	Gas Water Heater	For all units	TGC	
	Electric Water Heater	For all units	Stiebel Eltron	
	Microwave Oven	For all units	Siemens	HF25G560
	Washer/Dryer	For all units	Siemens	Wash & Dry 1641
	Refrigerator	For all units	Siemens	K1385SA501E
Bathroom	Exhaust Fan	For all units	Xpelair	90800AW
	Gas Water Heater	For all units (Bath 2)	TGC	TGW168D/TGW128D
Lavatory	Exhaust Fan	For all units	Xpelair	90800AW
	Electric Water Heater	For all units	Stiebel Eltron	

裝置、裝修物料及設備 FITTINGS, FINISHES AND APPLIANCES

8. 複式單位 2 樓至 1 樓 (單位 A、B 及 C) 的電器附表

位置	電器	適用單位	品牌	型號
起居室／飯廳／睡房及儲物室	分體式空調	所有單位 (單位 B 儲物室除外)	開利	
廚房	煤氣煮食爐	1 樓	TGC	RB3GVB
	抽油煙機	1 樓	西門子	
	抽氣扇	1 樓	Xpelair	90800AW
	煤氣熱水爐	1 樓 (單位 A)	TGC	TGW168D/TGW128D
	電熱水爐	1 樓	斯寶亞創	
	微波爐	1 樓	西門子	HF25G560
	洗衣／乾衣機	1 樓	西門子	Wash & Dry 1641
	冰箱	1 樓	西門子	K1385SA501E
浴室	抽氣扇	所有單位	Xpelair	90800AW
	煤氣熱水爐	所有單位 (單位 B 及 C 浴室 1 除外)	TGC	TGW168D/TGW128D
洗手間	抽氣扇	所有單位 (單位 B 除外)	Xpelair	90800AW
	電熱水爐	只適用於單位 A	斯寶亞創	

9. 典型單位 2 樓至 1 樓 (單位 D) 的電器附表

位置	電器	適用單位	品牌	型號
起居室／飯廳／睡房及儲物室	分體式空調	所有單位	開利	
廚房	煤氣煮食爐	所有單位	TGC	RB3GVB
	抽油煙機	所有單位	西門子	
	抽氣扇	所有單位	Xpelair	90800AW
	電熱水爐	所有單位	斯寶亞創	
	微波爐	所有單位	西門子	HF25G560
	洗衣／乾衣機	所有單位	西門子	Wash & Dry 1641
	冰箱	所有單位	西門子	K1385SA501E
浴室	抽氣扇	所有單位	Xpelair	90800AW
	煤氣熱水爐	所有單位	TGC	TGW168D/TGW128D
洗手間	抽氣扇	所有單位	Xpelair	90800AW
	電熱水爐	所有單位	斯寶亞創	

裝置、裝修物料及設備 FITTINGS, FINISHES AND APPLIANCES

8. Appliances Schedule for Duplex Units 2/F to 1/F (Unit A, B & C)

Location	Appliances	Units apply	Brand	Model No.
Living/Dining/Bedroom/Store	Split type air-conditioner	For all units (Except Unit B Store)	Carrier	
Kitchen	Gas Cooker	For 1/F	TGC	RB3GVB
	Cooker Hood	For 1/F	Siemens	
	Exhaust Fan	For 1/F	Xpelair	90800AW
	Gas Water Heater	For 1/F (Unit A)	TGC	TGW168D/TGW128D
	Electric Water Heater	For 1/F	Stiebel Eltron	
	Microwave Oven	For 1/F	Siemens	HF25G560
	Washer/Dryer	For 1/F	Siemens	Wash & Dry 1641
	Refrigerator	For 1/F	Siemens	K1385SA501E
Bathroom	Exhaust Fan	For all units	Xpelair	90800AW
	Gas Water Heater	For all units (Except Unit B & C Bathroom 1)	TGC	TGW168D/TGW128D
Lavatory	Exhaust Fan	For all units (Except Unit B)	Xpelair	90800AW
	Electric Water Heater	Only Unit A	Stiebel Eltron	

9. Appliances Schedule for Typical Units 2/F to 1/F (Unit D)

Location	Appliances	Units apply	Brand	Model No.
Living/Dining/Bedroom/Store	Split type air-conditioner	For all units	Carrier	
Kitchen	Gas Cooker	For all units	TGC	RB3GVB
	Cooker Hood	For all units	Siemens	
	Exhaust Fan	For all units	Xpelair	90800AW
	Electric Water Heater	For all units	Stiebel Eltron	
	Microwave Oven	For all units	Siemens	HF25G560
	Washer/Dryer	For all units	Siemens	Wash & Dry 1641
	Refrigerator	For all units	Siemens	K1385SA501E
Bathroom	Exhaust Fan	For all units	Xpelair	90800AW
	Gas Water Heater	For all units	TGC	TGW168D/TGW128D
Lavatory	Exhaust Fan	For all units	Xpelair	90800AW
	Electric Water Heater	For all units	Stiebel Eltron	

服務協議 SERVICE AGREEMENTS

食水及沖廁水由水務署供應
電力由中華電力有限公司供應
煤氣由香港中華煤氣有限公司供應

Potable and flushing water is supplied by Water Supplies Department
Electricity is supplies by CLP Power Hong Kong Limited
Towngas is supplied by The Hong Kong and China Gas Company Limited

地租 GOVERNMENT RENT

賣方(擁有人)將會或已支付(視情況而定)從政府租契日期起至包括與各買方訂立之物業轉讓契約的日期為止，就發展項目所興建於之地段的所有地租。

The Vendor (the owner) will pay or has paid (as the case may be) all outstanding Government rent in respect of the land on which the development is in the course of being erected, from the date of the Government Grant up to and including the date of the respective assignments to the purchasers.

買方應繳付的雜項款 MISCELLANEOUS PAYMENTS BY PURCHASER

- | | |
|---|---|
| <p>1. 在向買方交付住宅物業在空置情況下的管有權時，買方須向賣方(擁有人)補還水、電力及氣體的按金。</p> <p>2. 在交付時，買方不須向賣方(擁有人)支付清理廢料的費。</p> <p>3. 水、電力及氣體的按金及清理廢料的費用的款額於售樓說明書印製日尚未決定。</p> | <p>1. On the delivery of the vacant possession of the residential property to the purchaser, the purchaser is liable to reimburse the vendor (the owner) for the deposits for water, electricity and gas.</p> <p>2. On the delivery, the purchaser is not liable to pay to the vendor (the owner) a debris removal fee.</p> <p>3. The amount of deposits for water, electricity and gas and debris removal fee is yet to be ascertained at the date on which the sales brochure is printed.</p> |
|---|---|

附註：買方須向發展項目經理人而不須向擁有人繳付水、電力及氣體的按金及清理廢料的費用。

Note: The purchaser should pay to the manager and not the owner of the development the deposits for water, electricity and gas and the debris removal fee.

欠妥之處的保養責任期 DEFECTS LIABILITY WARRANTY PERIOD

凡物業或於買賣合約列出裝設於物業內的裝置、裝修物料或設備有欠妥之處，而該欠妥之處並非由買方行為或疏忽造成，則賣方在接獲買方在買賣成交日期後的6個月內送達的書面通知後，須於合理地切實可行的範圍內盡快自費作補救。

The vendor shall, at its own cost and as soon as reasonably practicable after receipt of a written notice served by the purchaser within 6 months after the date of completion of the sale and purchase of the residential property, remedy any defects in that property, or in the fittings, finishes or appliances as set out in the agreement for sale and purchase concerned, caused otherwise than by the act or neglect of the purchaser.

修訂 MODIFICATION

不適用

Not applicable

斜坡維修 MAINTENANCE OF SLOPES

公契指明：

The DMC stipulates that:

業主須自費：

The Owners shall at their own expenses:

- (i) 為各範圍內須保養的斜坡及護土牆開放空間及設施進行保養
- (ii) 在綠色底色黑影區域上執行及完成岩土工程勘察及相關斜坡處理工程，使地政總署署長滿意
- (iii) 按照斜坡示意圖的紅線所示，從該土地建造、敷設及維護直徑不超過350毫米的雨水管道，貫穿上述綠色底色黑影區域
- (iv) 建造、維護、保養及維修啡色區域，以及建造及維護啡色區域或其他獲授取道權區域內的主輸水管
- (v) 美化景觀及種植樹木與灌木

- (i) to maintain all areas Slopes and Retaining Walls open spaces and facilities as are required to be maintained
- (ii) to carry out and complete to the satisfaction of the Director of Lands such geotechnical investigations and such slope treatment and works on the Green Hatched Black Area
- (iii) to construct, lay and maintain a stormwater pipeline of a diameter of not more than 350 millimetres as shown by the red line on the Slope Plans from the Land through the said Green Hatched Black Areas
- (iv) to construct uphold maintain and repair the Brown Area and to construct and maintain the water mains within the Brown Area or such other area over and along which the right-of-way is given
- (v) to landscape and plant with trees and shrubs

經理人獲業主授權根據批地文件、斜坡維修指南及有關政府當局不時就維修斜坡及護土牆發出的所有指引，聘請合資格人員檢查、維護及保養斜坡及護土牆，令其處於良好狀態及就此進行任何所需工程，而各業主須分擔該等工程的成本。

The Manager is given authority by the Owners to engage suitable qualified personnel to inspect keep and maintain in good substantial repair and condition and carry out any necessary works in respect of the Slopes and Retaining Walls in compliance with the Land Grant, the Slope Maintenance Manual and all guidelines issued from time to time by the appropriate Government departments regarding the maintenance of Slopes and Retaining Walls and each Owner shall make contributions toward the costs of such works.

斜坡圖
SLOPE PLAN



申請建築物總樓面面積寬免的資料

INFORMATION IN APPLICATION FOR CONCESSION ON GROSS FLOOR AREA OF BUILDING

獲寬免總樓面面積的設施分項

於印製售樓說明書前呈交予並已獲建築事務監督批准的建築圖則上有關總樓面面積寬免的分項的最新資料，請見下表。如印製售樓說明書時尚未呈交最終修訂圖則予建築事務監督，則有(#)號的資料可以由認可人士提供的資料作為基礎。直至最終修訂圖則於發出入伙紙前呈交予並獲建築事務監督批准前，以下分項資料仍可能有所修改。

		面積 平方米 (平方呎)
根據《建築物(規劃)規例》第23(3)(b)條不計算的總樓面面積)		
1.(#)	停車場及上落客貨地方(公共交通總站除外)	3157.002 (33981.654)
2.	機房及相類設施	
2.1	所佔面積受相關《認可人士、註冊結構工程師及註冊岩土工程師作業備考》或規例限制的強制性設施或必要機房，例如升降機機房、電訊及廣播設備室、垃圾及物料回收房等	77.389 (833.007)

Breakdown of GFA concession obtained for all features

Latest information on breakdown of GFA concessions as shown on the general building plans submitted to and approved by the Building Authority prior to the printing of the sale brochure is tabulated below. Information marked (#) may be based on information provided by the authorized person if the sales brochure is printed prior to the submission of the final amendment plans to the BA. The breakdown of GFA concessions may be subject to further changes until final amendment plans are submitted to and approved by the BA prior to the issuance of the occupation permit for the development.

		Area sq. metre (sq. ft.)
Disregarded GFA under Building (Planning Regulations 23(3)(b)		
1.(#)	Carpark and loading/unloading area excluding public transport terminus	3157.002 (33981.654)
2.	Plant rooms and similar services	
2.1	Mandatory feature or essential plant room, area of which is limited by respective Practice Notes for Authorized Persons, Registered Structural Engineers and Registered Geotechnical Engineers (PNAP) or regulation such as lift machine room, telecommunications and broadcasting (TBE) room, refuse storage and material recovery chamber, etc.	77.389 (833.007)

申請建築物總樓面面積寬免的資料
INFORMATION IN APPLICATION FOR CONCESSION ON GROSS FLOOR AREA OF BUILDING

		面積 平方米 (平方呎)
2.2(#)	所佔面積不受相關《認可人士、註冊結構工程師及註冊岩土工程師作業備考》或規例限制的強制性設施或必要機房，例如僅供消防裝置及設備佔用的房間、電錶房、電力變壓房、食水及鹹水缸等	90.748 (973.918)
2.3	非強制性或非必要機房，例如空調機房、風櫃房等	NIL
根據聯合作業備考第1及第2號提供的環保設施		
3.	露台	168.517 (1813.900)
4.	加闊的公用走廊及升降機大堂	477.942 (5144.520)
5.	公用空中花園	NIL
6.	隔聲鰭	NIL
7.	翼牆、捕風器及風斗	NIL
8.	非結構預製外牆	NIL
	無形模板	NIL
9.	工作平台	74.921 (806.442)
10.	隔音屏障	NIL
適意設施		
11.	供保安人員和管理處員工使用的櫃枱、辦公室、儲物室、警衛室和廁所、業主立案法團辦公室	49.925
12.(#)	住宅康樂設施，包括僅供康樂設施使用的中空、禱房、游泳池的濾水器機房、有蓋行人道等	713.359

		Area sq. metre (sq. ft.)
2.2(#)	Mandatory feature or essential plant room, area of which is NOT limited by any PNAP or regulation such as room occupied solely by fire services installations (FSI) and equipment, meter room, transformer room, potable and flushing water tank, etc.	90.748 (973.918)
2.3	Non-mandatory or non-essential plant room such as air-conditioning plant room, air handling unit (AHU) room, etc.	NIL
Green Features under Joint Practice Notes 1 and 2		
3.	Balcony	168.517 (1813.900)
4.	Wider common corridor and lift lobby	477.942 (5144.520)
5.	Communal sky garden	NIL
6.	Acoustic fin	NIL
7.	Wing wall, wind catcher and funnel	NIL
8.	Non-structural prefabricated external wall	NIL
	Lost form	NIL
9.	Utility platform	74.921 (806.442)
10.	Noise barrier	NIL
Amenity Features		
11.	Counter, office, store, guard room and lavatory for watchman and management staff, Owners' Corporation Office	49.925
12.(#)	Residential Recreational facilities including void, plant room, swimming pool filtration plant room, covered walkway etc serving solely the recreational facilities	713.359

申請建築物總樓面面積寬免的資料
INFORMATION IN APPLICATION FOR CONCESSION ON GROSS FLOOR AREA OF BUILDING

		面積 平方米 (平方呎)
	空間(康樂設施)	NIL
13.	有上蓋的園景區及遊樂場	NIL
14.	橫向屏障／有蓋人行道、花棚	NIL
15.	擴大升降機井道	NIL
16.	煙囪管道	NIL
17.	其他非強制性或非必要機房，例如鍋爐房、衛星電視共用天線房	NIL
18.	強制性設施或必要機房所需的管槽、氣槽	NIL
19.	非強制性設施或非必要機房所需的管槽、氣槽	NIL
20.	環保系統及設施所需的機房、管槽及氣槽	NIL
21.	複式住宅單位及洋房的中空	NIL
22.	伸出物，如空調機箱及伸出外牆超過750毫米的平台	NIL
	設有郵箱的郵件派遞室	NIL
其他項目		
23.	庇護層，包括庇護層兼空中花園	NIL
24.	其他伸出物	NIL
25.	公共交通總站	NIL
26.	共用構築物及樓梯	NIL
27.	僅供獲接納不計入總樓面面積的樓層使用的樓梯、升降機槽及垂直管道的水平面積	NIL

		Area sq. metre (sq. ft.)
	Void (recreational facilities)	NIL
13.	Covered landscaped and play area	NIL
14.	Horizontal screens/covered walkways, trellis	NIL
15.	Larger lift shaft	NIL
16.	Chimney shaft	NIL
17.	Other non-mandatory or non-essential plant room, such as boiler room, satellite master antenna television (SMATV) room	NIL
18.	Pipe duct, air duct for mandatory feature or essential plant room	NIL
19.	Pipe duct, air duct for non-mandatory feature or non-essential plant room	NIL
20.	Plant room, pipe duct, air duct for environmentally friendly system and feature	NIL
21.	Void in duplex domestic flat and house	NIL
22.	Projections such as air-conditioning box and platform with a projection of more than 750 mm from the external wall	NIL
	Mail delivery room with mail boxes	NIL
Other Exempted Items		
23.	Refuge floor including refuge door cum sky garden	NIL
24.	Other projections	NIL
25.	Public transport terminus	NIL
26.	Party structure and common staircase	NIL
27.	Horizontal area of staircase, lift shaft and vertical duct solely serving floor accepted as not being accountable for GFA	NIL

申請建築物總樓面面積寬免的資料
INFORMATION IN APPLICATION FOR CONCESSION ON GROSS FLOOR AREA OF BUILDING

		面積 平方米 (平方呎)
28.	公眾通道	NIL
29.	因建築物後移導致的覆蓋面積	NIL
	空間(商場)	NIL
	游泳池的濾水機房	NIL
額外總樓面面積		
30.	額外總樓面面積	NIL

註： 上述表格是根據屋宇署所發出的《認可人士、註冊結構工程師及註冊岩土工程師作業備考》ADM-2 規定的要求而制訂的。屋宇署會按實際需要不是更改有關要求。

有關建築物的環境評估及發展項目的公用部分的預計能量表現或消耗的資料

本發展項目的經批准一般建築圖則不受由建築事務監督發出的《認可人士、註冊結構工程師及註冊岩土工程師作業備考》APP-151 規定規限。本發展項目的環境評估及公用部份的預計能量表現或消耗的資料無須呈交建築事務監督，以作為批予總樓面面積寬免的先決條件。

		Area sq. metre (sq. ft.)
28.	Public passage	NIL
29.	Covered set back area	NIL
	Void (shopping arcades)	NIL
	Swimming pool filtration plant room	NIL
Bonus GFA		
30.	Bonus GFA	NIL

Note: The above table is based on the requirements as stipulated in the Practice Note for Authorized Persons, Registered Structural Engineers and Registered Geotechnical Engineers ADM-2 issued by the Buildings Department. The Buildings Department may revise such requirements from time to time as appropriate.

Environmental Assessment of the Building and Information on the Estimated
Energy Performance or Consumption of the Common Parts of the Development

The approved general building plans of this development are not subject to the requirements stipulated in the Practice Note for Authorized Persons, Registered Structural Engineers and Registered Geotechnical Engineers APP-151 issued by the Building Authority. Environmental assessment and information on the estimated energy performance or consumption for the common parts of this development were not required to be submitted to the Building Authority as a prerequisite for the granting of gross floor area concessions.

地政總署署長作為給予預售樓花同意書的條件而規定列於售樓說明書的資料
INFORMATION REQUIRED BY THE DIRECTORS OF LANDS TO BE SET OUT IN
THE SALES BROCHURE AS A CONDITION FOR GIVING THE PRESALE CONSENT

1. 買方須與賣方於正式買賣合約的協議，除可用作按揭或押記外，買方不會於完成正式買賣合約之成交及簽署轉讓契之前，以任何方式，或訂立任何協議以達至，提名任何人士接受轉讓正式買賣合約所指定的住宅物業或車位，或轉讓該住宅物業或車位，或轉移該住宅物業或車位的正式合約的權益。
 2. 如正式買賣合約的買方有此要求，並獲賣方(按其自己的酌情決定)同意之情況下取消正式買賣合約或買方於該正式買賣合約所承擔之責任，賣方有權保留相等於該正式買賣合約所指定的住宅物業及車位總售價百份之五的款額。同時買方亦須額外付予賣方或付還賣方(視情況而定)全部就取消該正式買賣合約須付之律師費、收費及代墊付費用(包括任何須繳付之印花稅)。
 3. 賣方將會支付或已經支付(視情況而定)由批地文件之日起直至有關個別買方簽署轉讓契之日(包括簽署轉讓契當日)止，所有有關該正在興建的發展項目所處地段的地稅。
 4. 已簽署正式買賣合約的買方有權要求查閱一份有關完成興建期數所需的建築費用及專業費用總額的最新資料，及有關直至詢問時的上一個曆月底為止已動用及未付的建築費用及專業費用總額，並可於提出要求及在支付不超過港幣一百元象徵式費用後獲提供該資料的副本。
 5. 有關批地文件條款第4(44)及第4(67)條所指的啡色範圍(按批地文件條款第2條闡述)及批地文件第4(60)條所指的綠色底黑影區域(按批地文件條款第4(9)條闡述)的資料：
1. The purchaser is required to agree with the Vendor in the Agreement for Sale and Purchase to the effect that other than entering into a mortgage or charge, the purchaser will not nominate any person to take up the Assignment of the Residential Unit or the Parking Space specified in the Agreement for Sale and Purchase, sub-sell that Residential Unit or the Parking Space or transfer the benefit of the Agreement for Sale and Purchase of that Residential Unit or Parking Space in any manner whatsoever or enter into any agreement so to do before completion of the sale and purchase and execution of the Assignment.
 2. If the Vendor, at the request of the purchaser under an Agreement for Sale and Purchase, agrees (at its own discretion) to cancel the Agreement for Sale and Purchase or the obligations of the purchaser under the Agreement for Sale and Purchase, the Vendor is entitled to retain the sum of five percent (5%) of the total purchase price of the Residential Unit and the Parking Space specified in the Agreement for Sale and Purchase and the purchaser will in addition pay or reimburse (as the case may be) to the Vendor all legal costs, charges and disbursements (including any stamp duty) in connection with the cancellation of the Agreement for Sale and Purchase.
 3. The Vendor will pay or has paid (as the case may be) all outstanding Government rent in respect of the land on which the Development is in the course of being erected, from the date of the Government Grant up to and including the date of the respective Assignments to the purchasers.
 4. The purchaser who has signed an Agreement for Sale and Purchase has the right of access to and will, upon his request, be provided with a hard copy of an updated record of information as to the total construction costs and the total professional fees to complete the Development as well as the total construction costs and the total professional fees expended and paid as at the end of the calendar month preceding the month at which the request is made subject to payment of a nominal fee of not more than HK\$100 per request.
 5. Information relating to the Brown Area (as defined in Clause 2 of the Government Grant) as referred to in Clauses 4(44) and 4(67) of the Government Grant and the Green Hatched Black Area (as defined in Clause 4(9) of the Government Grant) as referred to in Clause 4(60) of the Government Grant:

請參閱「批地文件條款摘要」和「公共設施及公眾休憩用地資料」。

Please refer to the section “Summary of Land Grant”, the section “Information on Public Facilities and Public Open Spaces”.

已簽署正式買賣合約之買方有權取閱及如經該買方要求，並就每單一要求繳付不多於港幣一佰元的象徵式費用，將可獲提供在提出該要求的月份之上一個月份有關完成發展項目的總運建築費用及總專業人士費用及已使用並支付之總建築費用及總專業人士費用最新資料紀錄的複印文本。

賣方就該項目指定的互聯網站的網址：

www.onekowlloonpeak.com.hk

1. 發展項目及其週邊地區日後可能出現改變。
2. 本售樓說明書印製日期：2015年1月19日

The purchaser who has signed an agreement for sale and purchase has the right of access to and will, upon his request, be provided with a hard copy of an up-dated record of information as to the total construction costs and the total professional fees to complete the development as well as the total construction costs and the total professional fees expended and paid as at the end of the month preceding the month at which the request is made subject to payment of a nominal fee of not more than HK\$100 per request.

The address of the website designated by the vendor for the development:

www.onekowlloonpeak.com.hk

1. There may be future changes to the development and the surrounding areas.
2. Date of printing of this Sales Brochure: 19 January 2015

檢視紀錄 EXAMINATION RECORD

檢視／修改日期	所作修改	
	頁次	所作修改
2015年4月17日	12	更正打印錯字及更新資料
	23	更新樓面平面圖
	32	更新樓面平面圖
	34	更新樓面平面圖
	35-40	更正題目：由「花園連泳池」更正為「花園」
	107	更正打印錯字
	108	更新電器品牌的中文名稱
	109	更正打印錯字
	110	更新電器品牌的中文名稱
	111	更正打印錯字
2015年7月13日	沒有作出修改	
2015年10月12日	21	更新佈局圖
	22	更新樓面平面圖
	79	更新平面圖
2016年1月11日	沒有作出修改	
2016年4月9日	沒有作出修改	
2016年7月8日	沒有作出修改	
2016年10月7日	沒有作出修改	

Examination/Revision Date	Revision Made	
	Page Number	Revision Made
17 April 2015	12	Correction of typing error and update information
	23	The floor plan is updated
	32	The floor plan is updated
	34	The floor plan is updated
	35-40	Correction of the heading from “Garden with Swimming Pool” to “Garden”
	107	Correction of typing error
	108	Updated the Chinese brand name of the electrical appliances
	109	Correction of typing error
	110	Updated the Chinese brand name of the electrical appliances
	111	Correction of typing error
13 July 2015	No revision made	
12 October 2015	21	The layout plan is updated
	22	The floor plan is updated
	79	The plan is updated
11 January 2016	No revision made	
9 April 2016	No revision made	
8 July 2016	No revision made	
7 October 2016	No revision made	

ONE KOWLOON PEAK

壹號九龍山頂

荃灣寶豐台8號

8 PO FUNG TERRACE, TSUEN WAN