

FLOOR PLANS OF RESIDENTIAL PROPERTIES IN THE DEVELOPMENT

發展項目的住宅物業的樓面平面圖

Legend of Terms and Abbreviations used on Floor Plans:

樓面平面圖中所使用名詞及簡稱之圖例：

A/C = AIR-CONDITIONING PLATFORM = 冷氣機平台
ACCESS GATE FOR MAINTENANCE (TYPICAL) = 供維修通道用之閘門 (通用)
ARCHITECTURAL FEATURE = 建築裝飾
ARCHITECTURAL FEATURE BELOW = 建築裝飾置下
ARCHITECTURAL FEATURE ABOVE = 建築裝飾置上
BAL. = BALCONY = 露台
BALCONY ABOVE (AT 12/F ONLY) = 露台置上(只限12樓)
BATH = BATHROOM = 浴室
BED RM.1 = BEDROOM 1 = 睡房 1
BED RM.2 = BEDROOM 2 = 睡房 2
BUILDING LINE ABOVE = 建築線置上
CHECK METER CABINET = 檢測錶掣櫃
COMMON FLAT ROOF FOR MAINTENANCE ONLY TO BE DESIGNATED AS COMMON AREA UNDER DMC = 將被納入於大廈公契內公共地方供維修用的公共平台
CORRIDOR = 走廊
COVER FOR 12/F BALCONY BELOW = 12樓露台蓋頂置下
COVER FOR 15/F BALCONY BELOW = 15樓露台蓋頂置下
COVER FOR 12/F UTILITY PLATFORM BELOW = 12樓工作平台蓋頂置下
COVERED LANDSCAPE = 有蓋園景
DIN.= DINING ROOM = 飯廳
DN = DOWN = 落
DOGHOUSE = 管道房
ELECT. METER DUCT = 電錶槽
ELECT. METER ROOM = 電錶房
E.L.V. ROOM = 特低電壓電線房
EMERGENCY GENERATOR ROOM = 應急發電機房
E/M ROOM = ELECTRICAL / MECHANICAL ROOM 電機房
FENCE WALL = 圍牆
FIREMAN'S LIFT LOBBY = 消防員升降機大堂
FIRE CONTROL CENTRE = 消防控制中心
FLAT ROOF BELOW (15/F) = 平台置下(15樓)
FLUSH WATER PUMP ROOM = 咸水水泵房
FLAT ROOF = 平台
FOOTPATH = 行人路
H.R.= HOSE REEL = 消防喉轆
INVERTED BEAM = 逆置橫樑
KIT.= KITCHEN = 廚房
LAV. = LAVATORY = 洗手間
LIFT = 升降機
LIFT LOBBY = 升降機大堂
LIV.= LIVING ROOM = 客廳
LOADING / UNLOADING AREA = 上落貨車範圍
MANAGEMENT OFFICE = 屋苑管理處
MAINTENANCE PLATFORM = 維修用平台
MAINTENANCE PLATFORM ABOVE = 維修用平台置上
M.BED RM = MASTER BEDROOM = 主人睡房
M.BATH = MASTER BATHROOM = 主人浴室
METAL FENCE = 金屬圍欄
OPEN KIT. = OPEN KITCHEN = 開放式廚房
P.D. = PIPE DUCT = 管槽
PLANTER = 花槽
PUBLIC ACCESS = 公眾行人通道
POTABLE WATER PUMP ROOM = 食水水泵房
PRIVATE GARDEN = 私人花園
R.C.PLINTH = REINFORCED CONCRETE PLINTH = 鋼筋混凝土座
REFUSE STORAGE AND MATERIAL RECOVERY CHAMBER = 垃圾及物料回收房
ROOF OF 15/F UNIT A01 = 15樓A01單位天台

ROOF OF 15/F UNIT A02 = 15樓A02單位天台
ROOF OF 15/F UNIT A03 = 15樓A03單位天台
ROOF OF 15/F UNIT B01 = 15樓B01單位天台
ROOF OF 15/F UNIT B02 = 15樓B02單位天台
ROOF OF 15/F UNIT B03 = 15樓B03單位天台
ROOF OF 15/F UNIT C01 = 15樓C01單位天台
ROOF OF 15/F UNIT C02 = 15樓C02單位天台
ROOF OF 15/F UNIT D01 = 15樓D01單位天台
ROOF OF 15/F UNIT D02 = 15樓D02單位天台
R.S. & M.R.R. = REFUSE STORAGE AND MATERIAL RECOVERY ROOM = 垃圾及物料回收房
STAIR HOOD OF 15/F UNIT A01 = 15樓A01單位梯屋
STAIR HOOD OF 15/F UNIT A02 = 15樓A02單位梯屋
STAIR HOOD OF 15/F UNIT A03 = 15樓A03單位梯屋
STAIR HOOD OF 15/F UNIT B01 = 15樓B01單位梯屋
STAIR HOOD OF 15/F UNIT B02 = 15樓B02單位梯屋
STAIR HOOD OF 15/F UNIT B03 = 15樓B03單位梯屋
STAIR HOOD OF 15/F UNIT C01 = 15樓C01單位梯屋
STAIR HOOD OF 15/F UNIT C02 = 15樓C02單位梯屋
STAIR HOOD OF 15/F UNIT D01 = 15樓D01單位梯屋
STAIR HOOD OF 15/F UNIT D02 = 15樓D02單位梯屋
SEPARATION WALL = 分隔牆
SPRINKLER CONTROL VALVE CABINET = 花灑控制閥櫃
STORE = 儲物室
STUDY RM = STUDY ROOM = 書房
SUMP TANK ROOM = 地下水缸房
SUNSHADING DEVICE = 遮陽蓬
SUNSHADING DEVICE ABOVE (AT 12/F ONLY) = 遮陽蓬置上(只限12樓)
SUNSHADING DEVICE ABOVE = 遮陽蓬置上
SUNSHADING DEVICE BELOW = 遮陽蓬置下
T.D. = TELEPHONE DUCT = 電話線槽
TO BE DESIGNATED AS COMMON AREA UNDER DMC (FOR MAINTENANCE) = 將被納入於大廈公契內的公共地方(供維修)
U.P.= UTILITY PLATFORM = 工作平台
UP= 上
WING 1 = 1翼
WING 2 = 2翼
W.M.C. = WATER METER CABINET = 水錶櫃
U.T. = UTILITY ROOM = 多用途房

Explanatory Notes:

1. Symbols of fittings and fitments shown on the floor plans, such as shower compartment, bath tub, floor drain, water closet, shower, sink and sink counter, electric stove etc, are architectural symbols retrieved from the latest approved general building plans and for general indication only.
2. There may be architectural features and exposed pipes, pipe covers on external walls. There are manhole covers and surface channel in private garden.
3. There are dish channels and surface channels at flat roof and roof.
4. Some residential units have ceiling bulkheads and sunken slabs of the residential units on the above floor installed in the living/dining room, bedrooms, open kitchen, kitchen, store room, utility room, study room and/or corridor to conceal the air-conditioning system and/or mechanical and electrical services in the residential unit.
5. The internal ceiling height within some units may vary due to structural, architectural and/or decoration design variations.
6. There may be common pipes and/or mechanical and electrical services within the air conditioning platform, balconies, utility platforms and roofs of some residential units.
7. Balconies and utility platforms are non-enclosed areas.

備註：

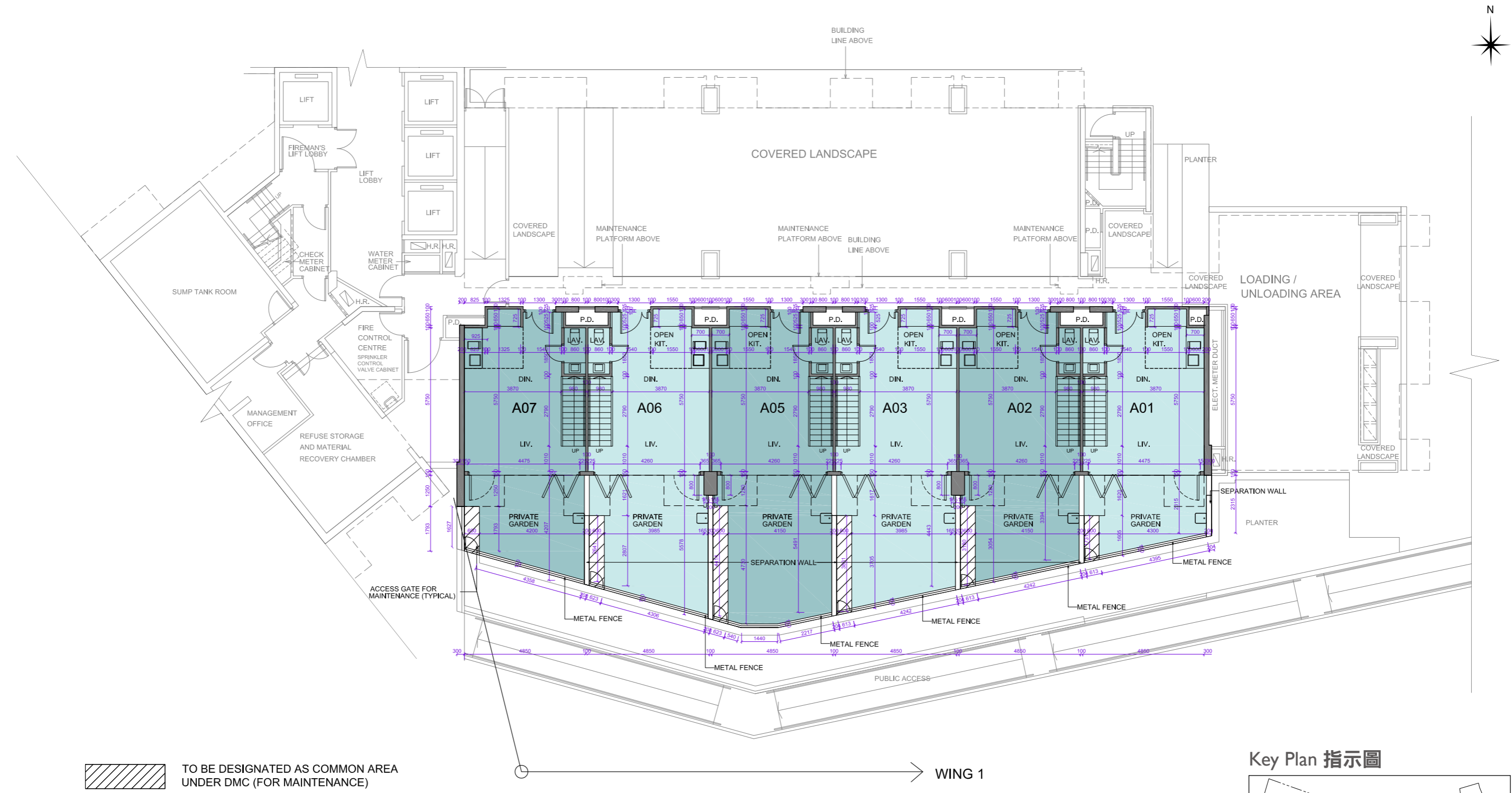
1. 樓面平面圖上所顯示的形象裝置符號，例如淋浴間、浴缸、地台去水、坐廁、花灑、洗手盤、洗手盤櫃、電磁爐等乃摘自最新的經批准的建築圖則，只作一般性標誌。
2. 外牆或設有建築裝飾及外露喉管道、喉管蓋。私人花園設有沙井蓋及去水渠。
3. 平台及天台設有碟型渠及去水渠。
4. 部份住宅單位之客廳/飯廳、睡房、開放式廚房、廚房、儲物室、多用途室、書房及/或走廊或設有假天花及上層單位跌級樓板，用以隱藏裝設在住宅單位內的冷氣及/或其他機電設備。
5. 部份單位之天花高度將會因結構、建築設計及/或裝修設計上的需要而有差異。
6. 部份住宅單位之冷氣機平台、露台、工作平台及天台內或裝有公用喉管及/或其他機電設備。
7. 露台及工作平台為不可封閉的地方。



FLOOR PLANS OF RESIDENTIAL PROPERTIES IN THE DEVELOPMENT 發展項目的住宅物業的樓面平面圖



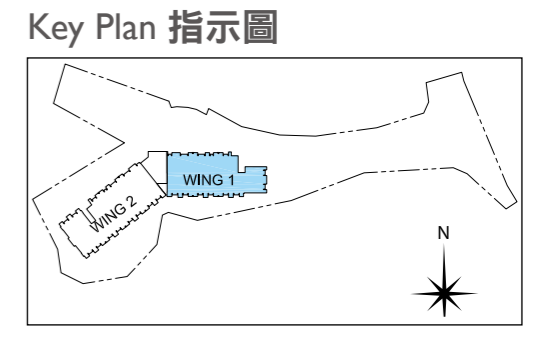
WING I
I翼 G/F FLOOR PLAN
地下平面圖



 TO BE DESIGNATED AS COMMON AREA UNDER DMC (FOR MAINTENANCE)

WING 1

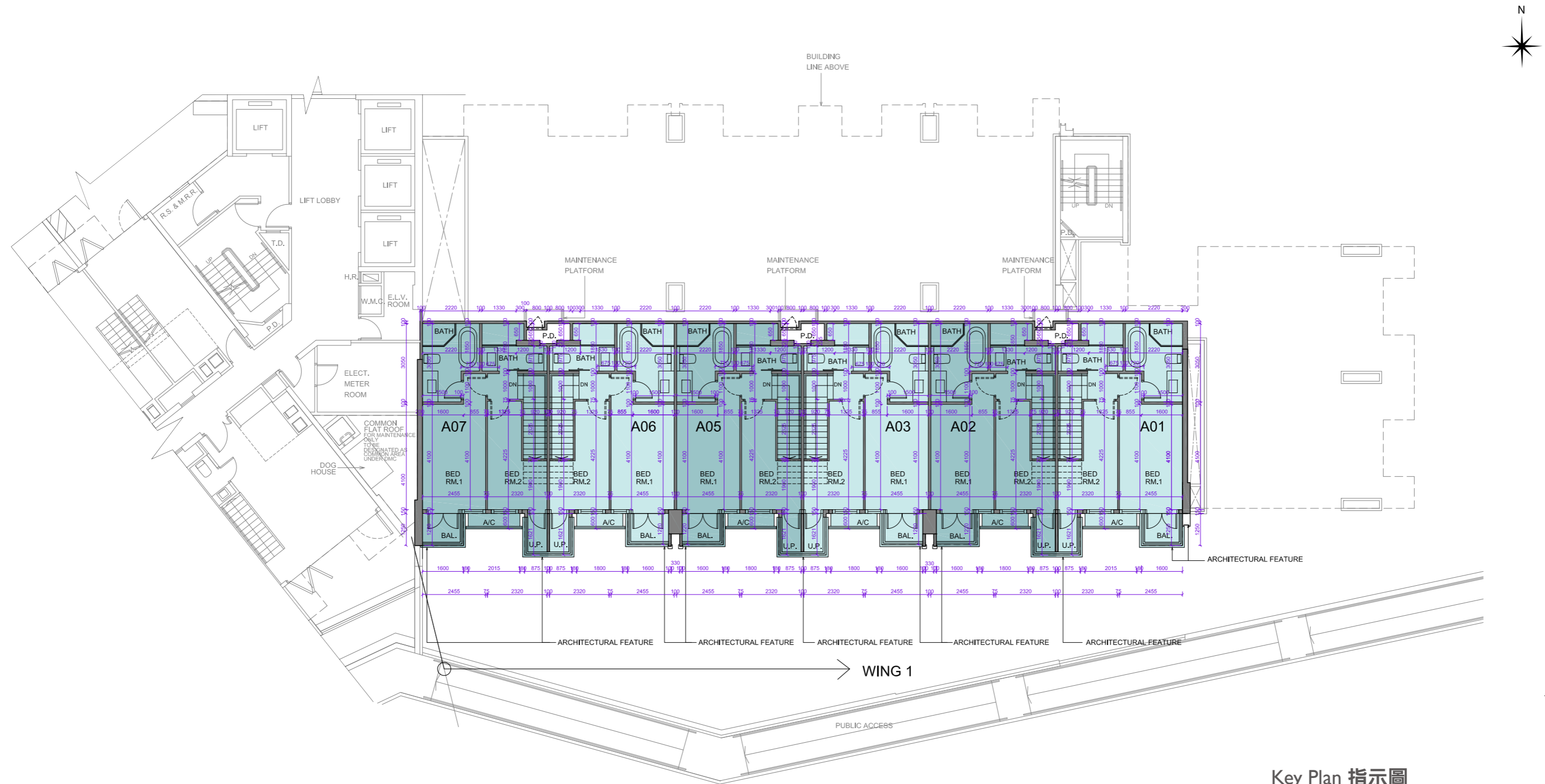
Note: The dimensions in the floor plan are all structural dimensions in millimeter.
備註: 樓面平面圖之尺規所列數字為以毫米標示之建築結構尺寸。



FLOOR PLANS OF RESIDENTIAL PROPERTIES IN THE DEVELOPMENT

發展項目的住宅物業的樓面平面圖

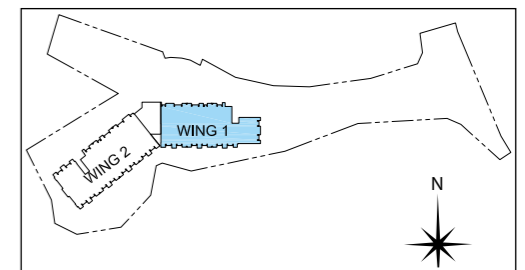
WING I I翼 1/F FLOOR PLAN 1樓平面圖



Note: The dimensions in the floor plan are all structural dimensions in millimeter.
備註：樓面平面圖之尺規所列數字為以毫米標示之建築結構尺寸。



Key Plan 指示圖



FLOOR PLANS OF RESIDENTIAL PROPERTIES IN THE DEVELOPMENT 發展項目的住宅物業的樓面平面圖



WING I G/F & I/F FLOOR PLAN I翼 地下及I樓平面圖

Each of the Residential Property 每個住宅物業	Block Name 大廈名稱	Floor 樓層	Unit 單位					
			A01	A02	A03	A05	A06	A07
Thickness of the floor slabs (excluding plaster)(mm) 樓板(不包括灰泥)的厚度(毫米)	Wing I I翼	G/F 地下	150	150	150	150	150	150
		I/F I樓	150	150	150	150	150	150
G/F 地下		3150	3150	3150	3150	3150	3150	
I/F I樓		3150	3150	3150	3150	3150	3150	
Floor-to-floor height (mm) 層與層之間的高度(毫米)								

Notes:

- The internal areas of the residential properties on the upper floors will generally be slightly larger than those on the lower floors because of the reducing thickness of the structural walls on the upper floors.
- Please refer to page 18 of this Sales Brochure for legend of the terms and abbreviations used on the floor plan above and the explanatory notes that are applicable thereto.

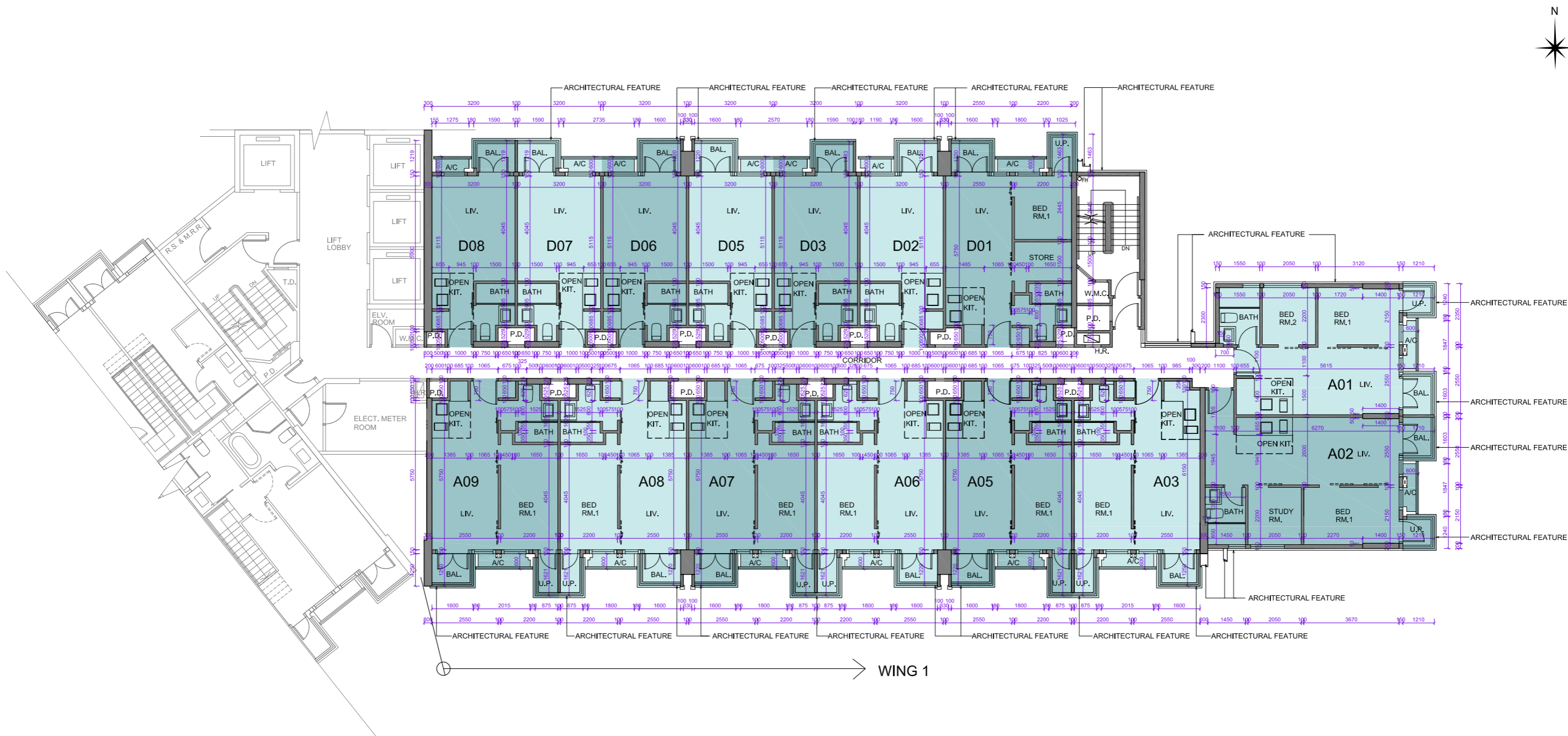
備註:

- 因住宅物業的較高樓層的結構牆的厚度遞減，較高樓層的內部面積，一般比較低樓層的內部面積稍大。
- 樓面平面圖中所使用名詞及簡稱之圖例及其適用的備註，請參閱本售樓說明書第18頁。

FLOOR PLANS OF RESIDENTIAL PROPERTIES IN THE DEVELOPMENT

發展項目的住宅物業的樓面平面圖

WING I
I翼
2/F FLOOR PLAN
2樓平面圖

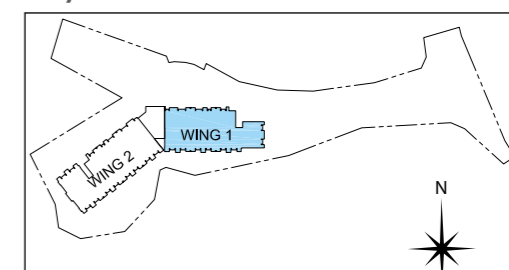


WING 1

Note: The dimensions in the floor plan are all structural dimensions in millimeter.
備註: 樓面平面圖之尺規所列數字為以毫米標示之建築結構尺寸。



Key Plan 指示圖



FLOOR PLANS OF RESIDENTIAL PROPERTIES IN THE DEVELOPMENT

發展項目的住宅物業的樓面平面圖



WING I 2/F FLOOR PLAN I翼 2樓平面圖

Each of the Residential Property 每個住宅物業	Block Name 大廈名稱	Floor 樓層	Unit 單位														
			A01	A02	A03	A05	A06	A07	A08	A09	D01	D02	D03	D05	D06	D07	D08
Thickness of the floor slabs (excluding plaster)(mm) 樓板(不包括灰泥)的厚度(毫米)	Wing I I翼	2/F 2樓	150	150	150	150	150	150	150	150	150	150	150	150	150	150	150
Floor-to-floor height (mm) 層與層之間的高度(毫米)		2/F 2樓	3150	3150	3150	3150	3150	3150	3150	3150	3150	3150	3150	3150	3150	3150	3150

Notes:

- The internal areas of the residential properties on the upper floors will generally be slightly larger than those on the lower floors because of the reducing thickness of the structural walls on the upper floors.
- Please refer to page 18 of this Sales Brochure for legend of the terms and abbreviations used on the floor plan above and the explanatory notes that are applicable thereto.

備註:

- 因住宅物業的較高樓層的結構牆的厚度遞減，較高樓層的內部面積，一般比較低樓層的內部面積稍大。
- 樓面平面圖中所使用名詞及簡稱之圖例及其適用的備註，請參閱本售樓說明書第18頁。

FLOOR PLANS OF RESIDENTIAL PROPERTIES IN THE DEVELOPMENT

發展項目的住宅物業的樓面平面圖

WING I
I翼
3/F FLOOR PLAN
3樓平面圖

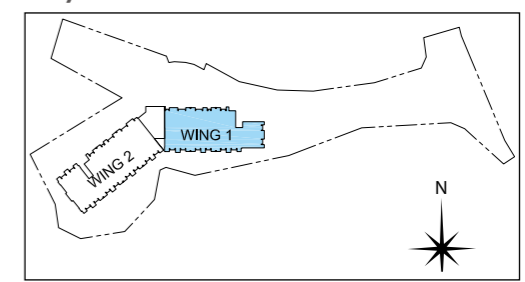


WING 1

Note: The dimensions in the floor plan are all structural dimensions in millimeter.
備註: 樓面平面圖之尺規所列數字為以毫米標示之建築結構尺寸。



Key Plan 指示圖



FLOOR PLANS OF RESIDENTIAL PROPERTIES IN THE DEVELOPMENT

發展項目的住宅物業的樓面平面圖



WING I 3/F FLOOR PLAN I翼 3樓平面圖

Each of the Residential Property 每個住宅物業	Block Name 大廈名稱	Floor 樓層	Unit 單位														
			A01	A02	A03	A05	A06	A07	A08	A09	D01	D02	D03	D05	D06	D07	D08
Thickness of the floor slabs (excluding plaster)(mm) 樓板(不包括灰泥)的厚度(毫米)	Wing I I翼	3/F 3樓	150	150	150	150	150	150	150	150	150	150	150	150	150	150	150
Floor-to-floor height (mm) 層與層之間的高度(毫米)		3/F 3樓	3120	3120	3120	3120	3120	3120	3120	3120	3120	3120	3120	3120	3120	3120	3120

Notes:

- The internal areas of the residential properties on the upper floors will generally be slightly larger than those on the lower floors because of the reducing thickness of the structural walls on the upper floors.
- Please refer to page 18 of this Sales Brochure for legend of the terms and abbreviations used on the floor plan above and the explanatory notes that are applicable thereto.

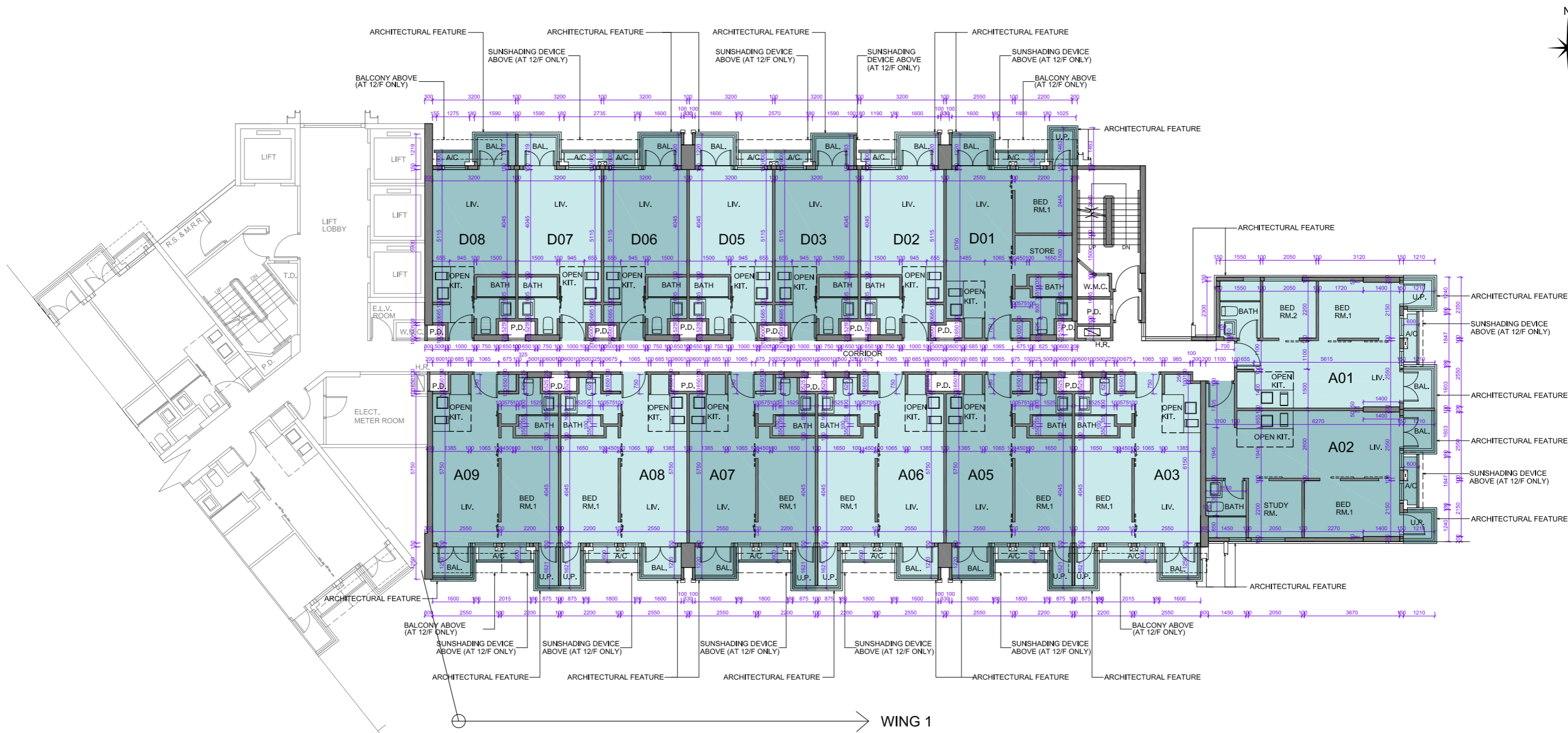
備註:

- 因住宅物業的較高樓層的結構牆的厚度遞減，較高樓層的內部面積，一般比較低樓層的內部面積稍大。
- 樓面平面圖中所使用名詞及簡稱之圖例及其適用的備註，請參閱本售樓說明書第18頁。

FLOOR PLANS OF RESIDENTIAL PROPERTIES IN THE DEVELOPMENT

發展項目的住宅物業的樓面平面圖

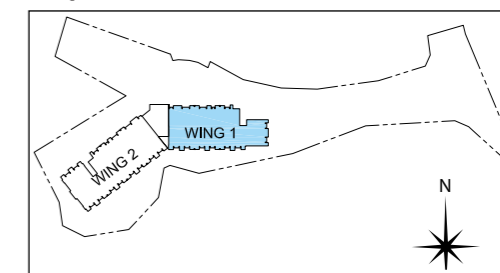
WING I 5/F - 12/F FLOOR PLAN
I翼 5樓至12樓平面圖



Note: The dimensions in the floor plan are all structural dimensions in millimeter.
備註: 樓面平面圖之尺規所列數字為以毫米標示之建築結構尺寸。

Scale 比例 0 5M(米)

Key Plan 指示圖



FLOOR PLANS OF RESIDENTIAL PROPERTIES IN THE DEVELOPMENT

發展項目的住宅物業的樓面平面圖



WING I 5/F - 12/F FLOOR PLAN I翼 5樓至12樓平面圖

Each of the Residential Property 每個住宅物業	Block Name 大廈名稱	Floor 樓層	Unit 單位														
			A01	A02	A03	A05	A06	A07	A08	A09	D01	D02	D03	D05	D06	D07	D08
Thickness of the floor slabs (excluding plaster)(mm) 樓板(不包括灰泥)的厚度(毫米)	Wing I I翼	5/F-11/F 5樓至11樓	150	150	150	150	150	150	150	150	150	150	150	150	150	150	150
		12/F 12樓	150	150	150	150	150	150	150	150	150	150	150	150	150	150	150
5/F-11/F 5樓至11樓		3120	3120	3120	3120	3120	3120	3120	3120	3120	3120	3120	3120	3120	3120	3120	3120
12/F 12樓		3120, 3390	3120, 3390	3390	3120, 3390	3120, 3390	3120, 3390	3120, 3390	3120, 3390	3120, 3390	3120, 3390	3120, 3390	3120, 3390	3120, 3390	3120, 3390	3120, 3390	3120, 3390
Floor-to-floor height (mm) 層與層之間的高度(毫米)																	

Notes:

- The internal areas of the residential properties on the upper floors will generally be slightly larger than those on the lower floors because of the reducing thickness of the structural walls on the upper floors.
- Please refer to page 18 of this Sales Brochure for legend of the terms and abbreviations used on the floor plan above and the explanatory notes that are applicable thereto.

備註:

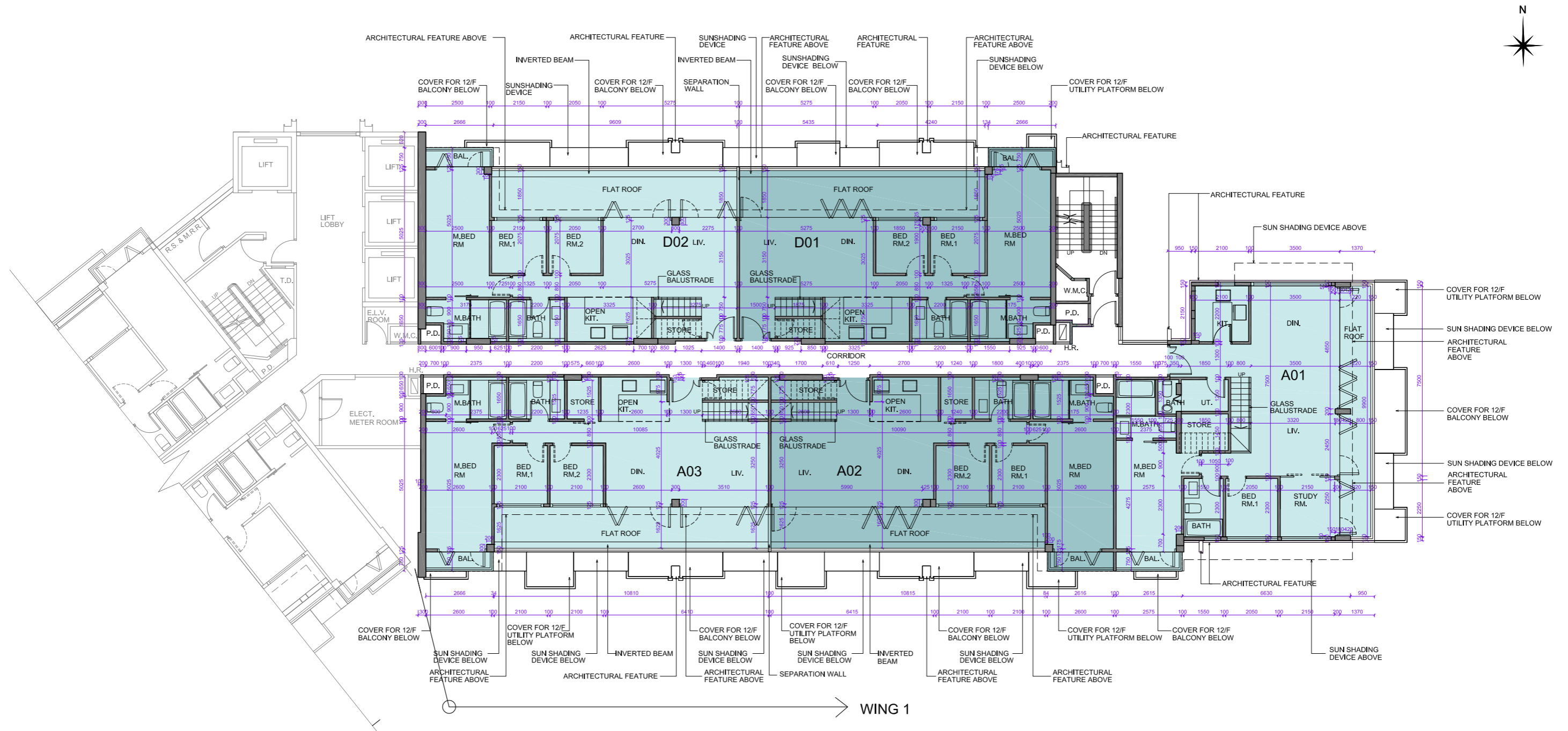
- 因住宅物業的較高樓層的結構牆的厚度遞減，較高樓層的內部面積，一般比較低樓層的內部面積稍大。
- 樓面平面圖中所使用名詞及簡稱之圖例及其適用的備註，請參閱本售樓說明書第18頁。

FLOOR PLANS OF RESIDENTIAL PROPERTIES IN THE DEVELOPMENT

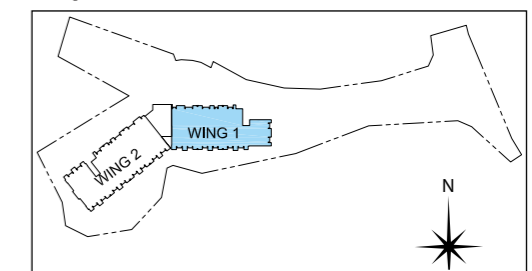
發展項目的住宅物業的樓面平面圖

WING I
I翼

15/F FLOOR PLAN
15樓平面圖



Key Plan 指示圖



Note: The dimensions in the floor plan are all structural dimensions in millimeter.
備註: 樓面平面圖之尺規所列數字為以毫米標示之建築結構尺寸。

Scale 比例 0 5M(米)

FLOOR PLANS OF RESIDENTIAL PROPERTIES IN THE DEVELOPMENT

發展項目的住宅物業的樓面平面圖



WING I 15/F FLOOR PLAN

I翼 15樓平面圖

Each of the Residential Property 每個住宅物業	Block Name 大廈名稱	Floor 樓層	Unit 單位				
			A01	A02	A03	D01	D02
Thickness of the floor slabs (excluding plaster)(mm) 樓板(不包括灰泥)的厚度(毫米)	Wing I I翼	15/F 15樓	175	175	175	175	175
Floor-to-floor height (mm) 層與層之間的高度(毫米)		15/F 15樓	3150	3150	3150	3150	3150

Notes:

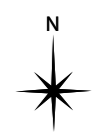
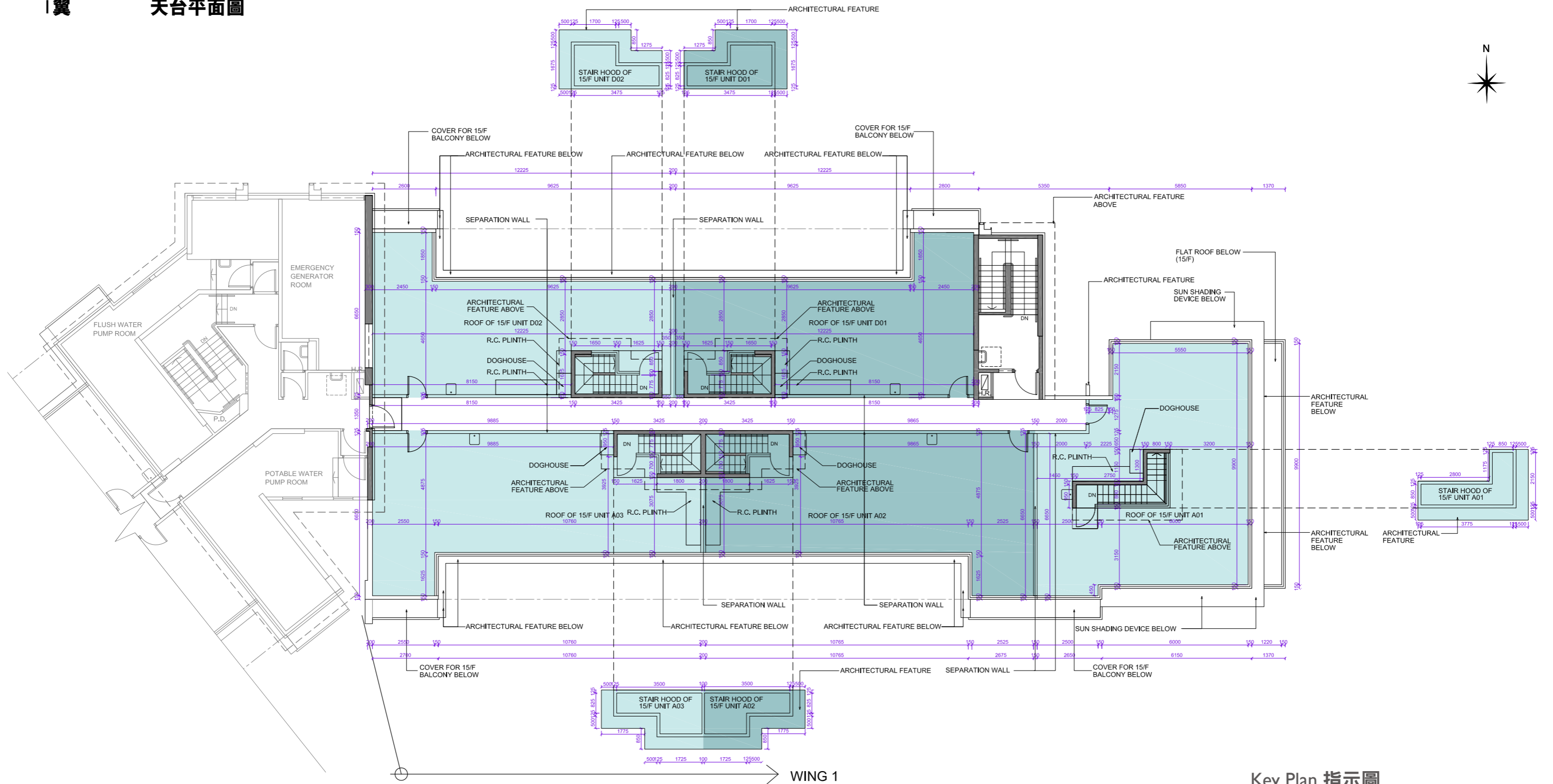
1. The internal areas of the residential properties on the upper floors will generally be slightly larger than those on the lower floors because of the reducing thickness of the structural walls on the upper floors.
2. Please refer to page 18 of this Sales Brochure for legend of the terms and abbreviations used on the floor plan above and the explanatory notes that are applicable thereto.

備註:

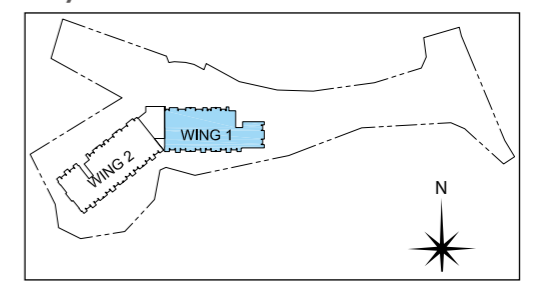
1. 因住宅物業的較高樓層的結構牆的厚度遞減，較高樓層的內部面積，一般比較低樓層的內部面積稍大。
2. 樓面平面圖中所使用名詞及簡稱之圖例及其適用的備註，請參閱本售樓說明書第18頁。

FLOOR PLANS OF RESIDENTIAL PROPERTIES IN THE DEVELOPMENT 發展項目的住宅物業的樓面平面圖

WING I I翼 天台平面圖



Key Plan 指示圖



Note: The dimensions in the floor plan are all structural dimensions in millimeter.
備註: 樓面平面圖之尺規所列數字為以毫米標示之建築結構尺寸。



FLOOR PLANS OF RESIDENTIAL PROPERTIES IN THE DEVELOPMENT 發展項目的住宅物業的樓面平面圖



WING I ROOF FLOOR PLAN I翼 天台平面圖

Each of the Residential Property 每個住宅物業	Block Name 大廈名稱	Floor 樓層	Unit 單位				
			A01	A02	A03	D01	D02
Thickness of the floor slabs (excluding plaster)(mm) 樓板(不包括灰泥)的厚度(毫米)	Wing I I翼	Roof (stairhood) 天台(梯屋)	150	175	175	175	175
Floor-to-floor height (mm) 層與層之間的高度(毫米)		Roof (stairhood) 天台(梯屋)	2850	2850	2850	2850	2850

Notes:

1. The internal areas of the residential properties on the upper floors will generally be slightly larger than those on the lower floors because of the reducing thickness of the structural walls on the upper floors.
2. Please refer to page 18 of this Sales Brochure for legend of the terms and abbreviations used on the floor plan above and the explanatory notes that are applicable thereto.

備註:

1. 因住宅物業的較高樓層的結構牆的厚度遞減，較高樓層的內部面積，一般比較低樓層的內部面積稍大。
2. 樓面平面圖中所使用名詞及簡稱之圖例及其適用的備註，請參閱本售樓說明書第18頁。

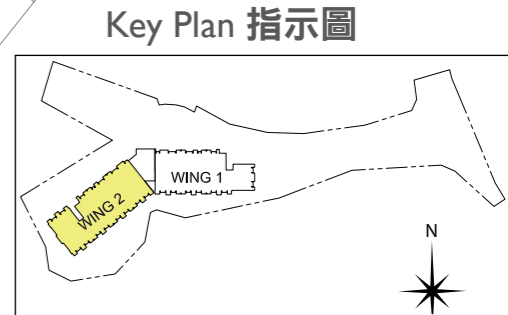
FLOOR PLANS OF RESIDENTIAL PROPERTIES IN THE DEVELOPMENT

發展項目的住宅物業的樓面平面圖

 TO BE DESIGNATED AS COMMON AREA UNDER DMC (FOR MAINTENANCE)



WING 2
2翼
1/F FLOOR PLAN
1樓平面圖



0 5M(米)
Scale 比例

Note: The dimensions in the floor plan are all structural dimensions in millimeter.
備註: 樓面平面圖之尺規所列數字為以毫米標示之建築結構尺寸。

FLOOR PLANS OF RESIDENTIAL PROPERTIES IN THE DEVELOPMENT

發展項目的住宅物業的樓面平面圖



WING 2 I/F FLOOR PLAN 2翼 1樓平面圖

Each of the Residential Property 每個住宅物業	Block Name 大廈名稱	Floor 樓層	Unit 單位																
			B01	B02	B03	B05	B06	B07	B08	B09	C01	C02	C03	C05	C06	C07	C08	C09	C10
Thickness of the floor slabs (excluding plaster)(mm) 樓板(不包括灰泥)的厚度(毫米)	Wing 2 2翼	I/F 1樓	150	150	150	150	150	150	150	150	150	150	150	150	150	150	150	150	150
Floor-to-floor height (mm) 層與層之間的高度(毫米)		I/F 1樓	3150	3150	3150	3150	3150	3150	3150	3150	3150	3150	3150	3150	3150	3150	3150	3150	3150

Notes:

- The internal areas of the residential properties on the upper floors will generally be slightly larger than those on the lower floors because of the reducing thickness of the structural walls on the upper floors.
- Please refer to page 18 of this Sales Brochure for legend of the terms and abbreviations used on the floor plan above and the explanatory notes that are applicable thereto.

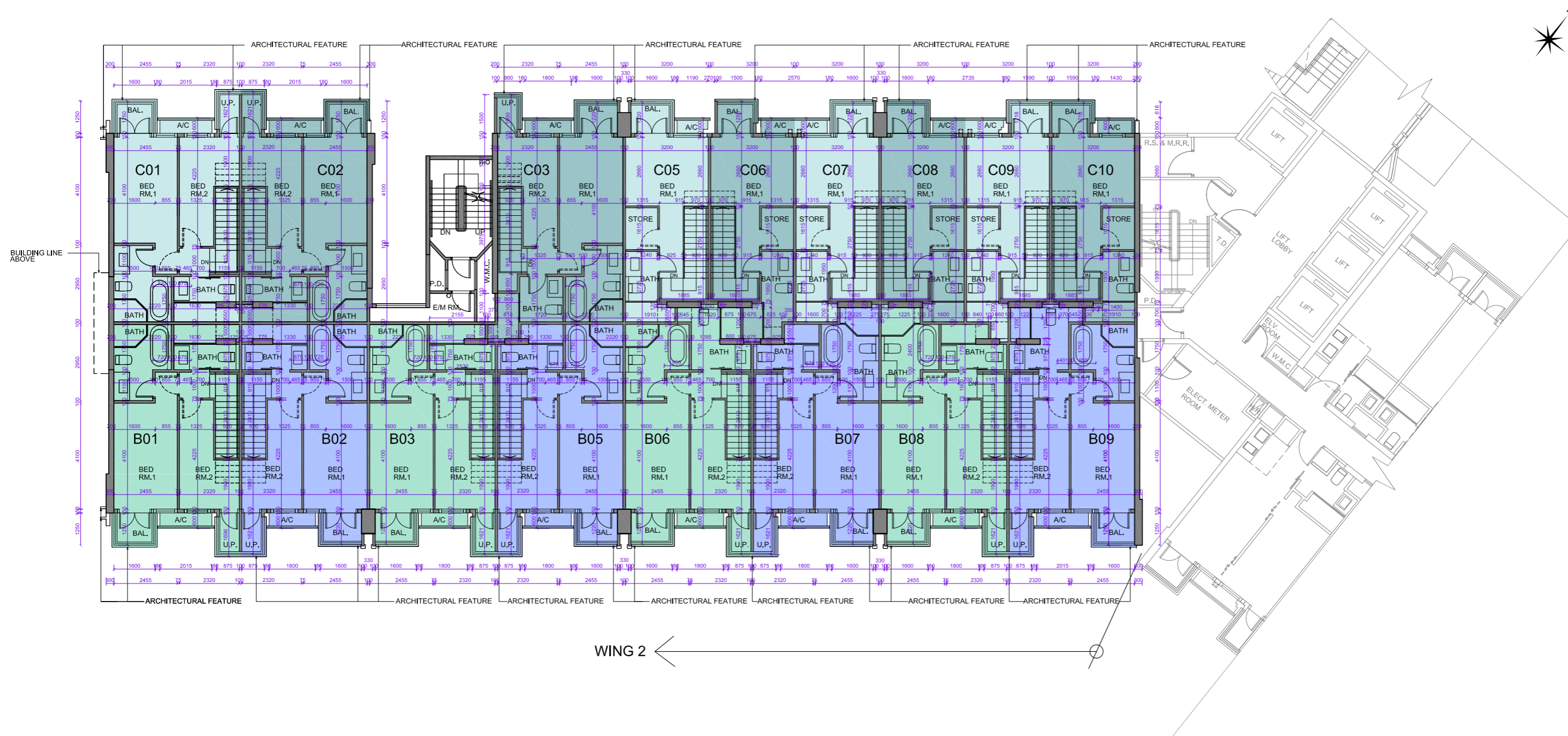
備註:

- 因住宅物業的較高樓層的結構牆的厚度遞減，較高樓層的內部面積，一般比較低樓層的內部面積稍大。
- 樓面平面圖中所使用名詞及簡稱之圖例及其適用的備註，請參閱本售樓說明書第18頁。

FLOOR PLANS OF RESIDENTIAL PROPERTIES IN THE DEVELOPMENT

發展項目的住宅物業的樓面平面圖

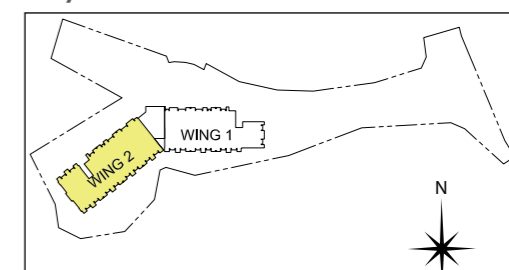
WING 2 2/F FLOOR PLAN
2翼 2樓平面圖



Note: The dimensions in the floor plan are all structural dimensions in millimeter.
備註: 樓面平面圖之尺規所列數字為以毫米標示之建築結構尺寸。



Key Plan 指示圖



FLOOR PLANS OF RESIDENTIAL PROPERTIES IN THE DEVELOPMENT

發展項目的住宅物業的樓面平面圖



WING 2 2/F FLOOR PLAN

2翼 2樓平面圖

Each of the Residential Property 每個住宅物業	Block Name 大廈名稱	Floor 樓層	Unit 單位																
			B01	B02	B03	B05	B06	B07	B08	B09	C01	C02	C03	C05	C06	C07	C08	C09	C10
Thickness of the floor slabs (excluding plaster)(mm) 樓板(不包括灰泥)的厚度(毫米)	Wing 2 2翼	2/F 2樓	125, 150	125, 150	125, 150	125, 150	125, 150	125, 150	125, 150	125, 150	125, 150	125, 150	125, 150	125, 150	125, 150	125, 150	125, 150	125, 150	125, 150
Floor-to-floor height (mm) 層與層之間的高度(毫米)		2/F 2樓	2675, 3150	2675, 3150	2675, 3150	2675, 3150	2675, 3150	2675, 3150	2675, 3150	2675, 3150	2675, 3150	2675, 3150	2675, 3150	2675, 3150	2675, 3150	2675, 3150	2675, 3150	2675, 3150	2675, 3150

Notes:

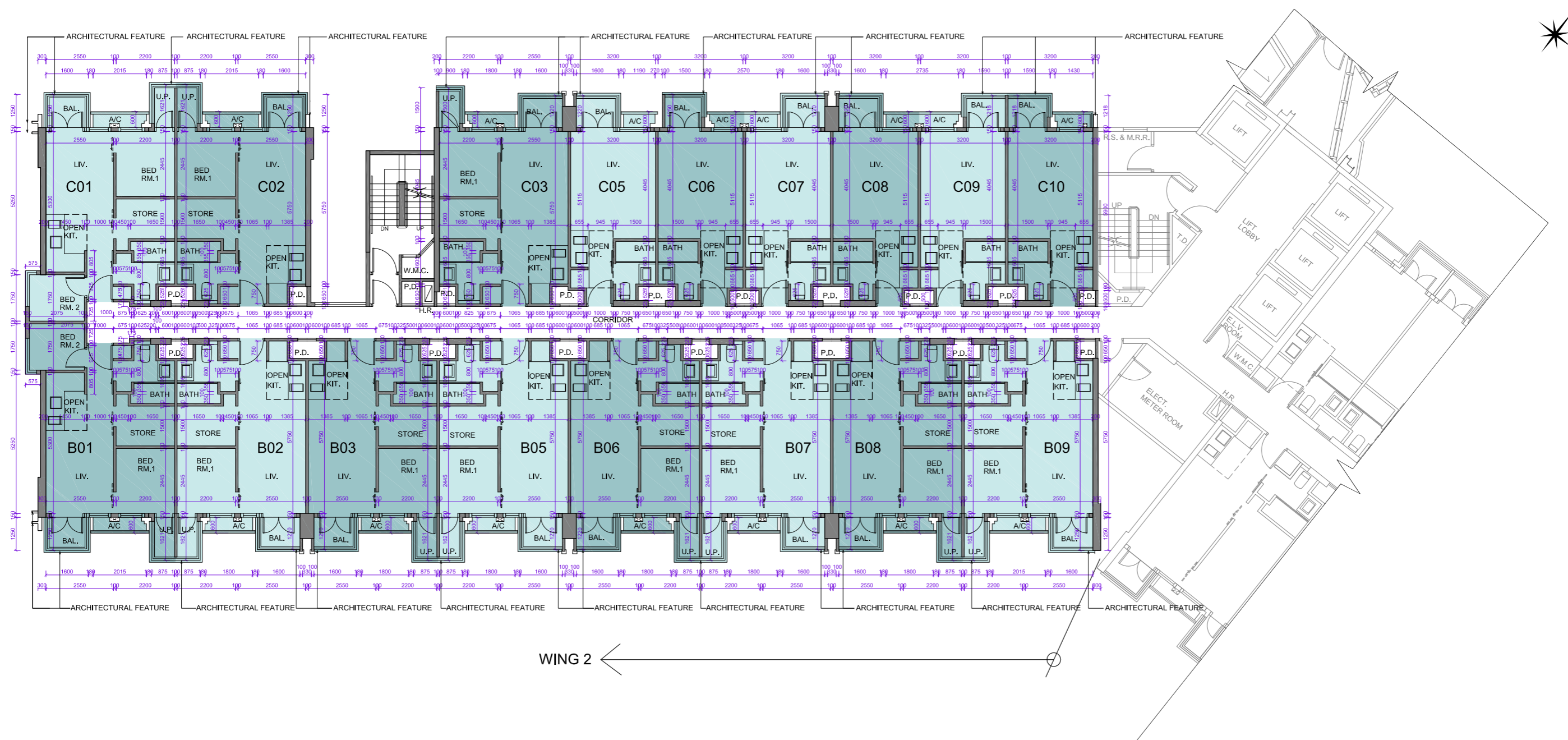
- The internal areas of the residential properties on the upper floors will generally be slightly larger than those on the lower floors because of the reducing thickness of the structural walls on the upper floors.
- Please refer to page 18 of this Sales Brochure for legend of the terms and abbreviations used on the floor plan above and the explanatory notes that are applicable thereto.

備註:

- 因住宅物業的較高樓層的結構牆的厚度遞減，較高樓層的內部面積，一般比較低樓層的內部面積稍大。
- 樓面平面圖中所使用名詞及簡稱之圖例及其適用的備註，請參閱本售樓說明書第18頁。

FLOOR PLANS OF RESIDENTIAL PROPERTIES IN THE DEVELOPMENT 發展項目的住宅物業的樓面平面圖

WING 2 3/F FLOOR PLAN 2翼 3樓平面圖

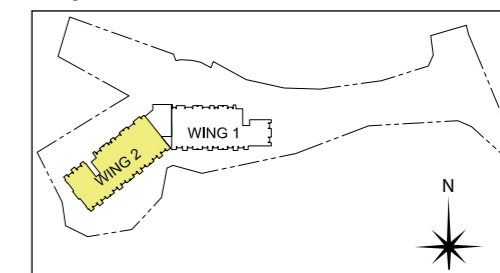


WING 2 ←

Note: The dimensions in the floor plan are all structural dimensions in millimeter.
備註：樓面平面圖之尺規所列數字為以毫米標示之建築結構尺寸。

Scale 比例 0 5M(米)

Key Plan 指示圖



FLOOR PLANS OF RESIDENTIAL PROPERTIES IN THE DEVELOPMENT

發展項目的住宅物業的樓面平面圖



WING 2 3/F FLOOR PLAN 2翼 3樓平面圖

Each of the Residential Property 每個住宅物業	Block Name 大廈名稱	Floor 樓層	Unit 單位																
			B01	B02	B03	B05	B06	B07	B08	B09	C01	C02	C03	C05	C06	C07	C08	C09	C10
Thickness of the floor slabs (excluding plaster)(mm) 樓板(不包括灰泥)的厚度(毫米)	Wing 2 2翼	3/F 3樓	150	150	150	150	150	150	150	150	150	150	150	150	150	150	150	150	150
Floor-to-floor height (mm) 層與層之間的高度(毫米)		3/F 3樓	3120	3120	3120	3120	3120	3120	3120	3120	3120	3120	3120	3120	3120	3120	3120	3120	3120

Notes:

- The internal areas of the residential properties on the upper floors will generally be slightly larger than those on the lower floors because of the reducing thickness of the structural walls on the upper floors.
- Please refer to page 18 of this Sales Brochure for legend of the terms and abbreviations used on the floor plan above and the explanatory notes that are applicable thereto.

備註:

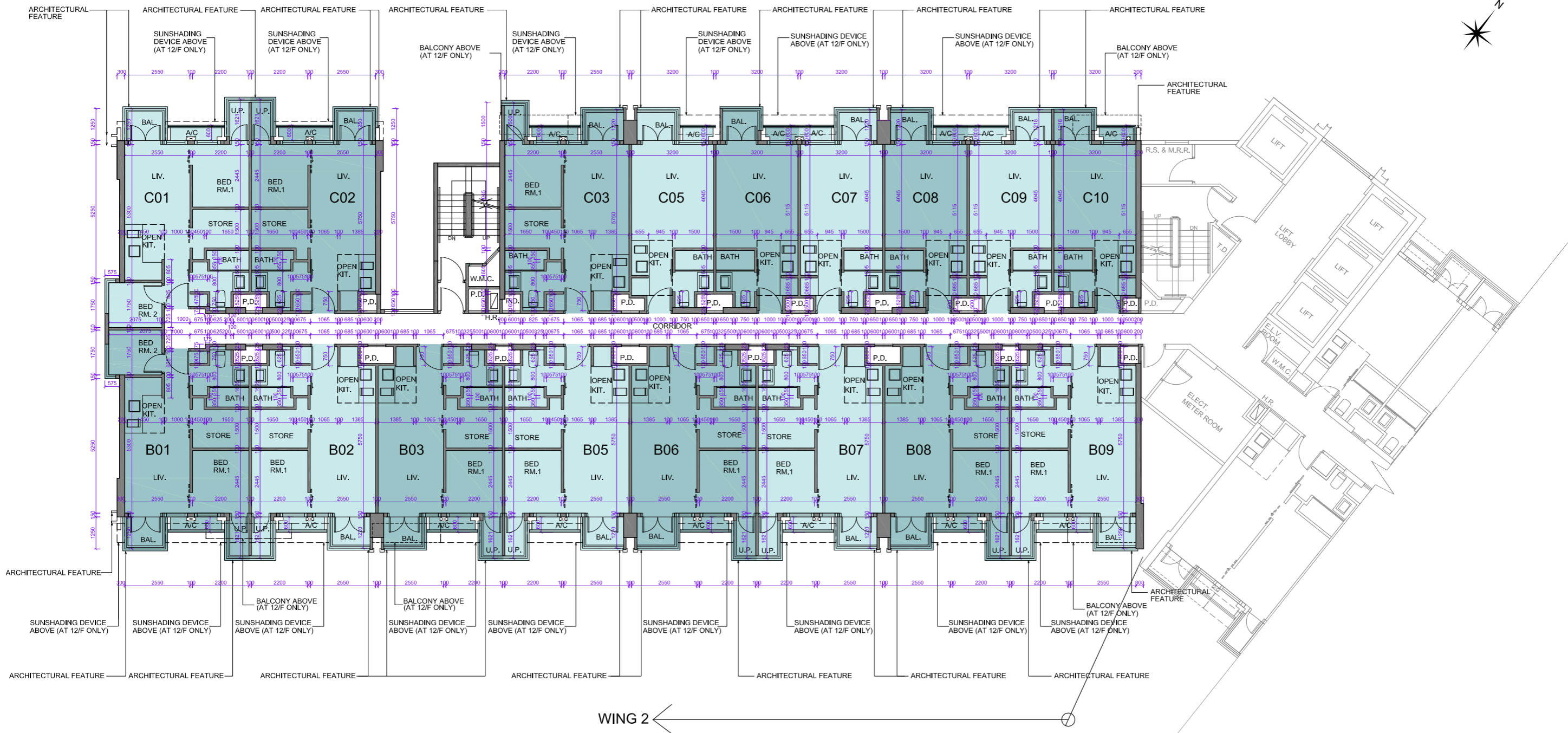
- 因住宅物業的較高樓層的結構牆的厚度遞減，較高樓層的內部面積，一般比較低樓層的內部面積稍大。
- 樓面平面圖中所使用名詞及簡稱之圖例及其適用的備註，請參閱本售樓說明書第18頁。

FLOOR PLANS OF RESIDENTIAL PROPERTIES IN THE DEVELOPMENT

發展項目的住宅物業的樓面平面圖

WING 2 5/F - 12/F FLOOR PLAN

2翼 5樓至12樓平面圖

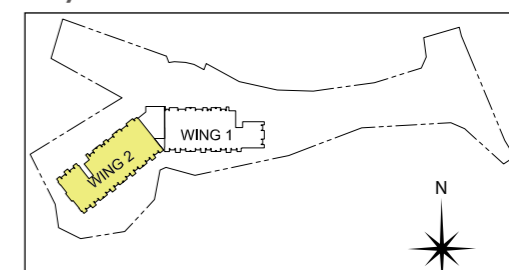


WING 2 ←

Note: The dimensions in the floor plan are all structural dimensions in millimeter.
備註: 樓面平面圖之尺規所列數字為以毫米標示之建築結構尺寸。



Key Plan 指示圖



FLOOR PLANS OF RESIDENTIAL PROPERTIES IN THE DEVELOPMENT

發展項目的住宅物業的樓面平面圖



WING 2 5/F - 12/F FLOOR PLAN 2翼 5樓至12樓平面圖

Each of the Residential Property 每個住宅物業	Block Name 大廈名稱	Floor 樓層	Unit 單位																		
			B01	B02	B03	B05	B06	B07	B08	B09	C01	C02	C03	C05	C06	C07	C08	C09	C10		
Thickness of the floor slabs (excluding plaster)(mm) 樓板(不包括灰泥)的厚度(毫米)	Wing 2 2翼	5/F-11/F 5樓至11樓	150	150	150	150	150	150	150	150	150	150	150	150	150	150	150	150	150		
		12/F 12樓	150, 300	150	150	150	150	150	150	150	150	150, 300	150	150	150	150	150	150	150	150	
5/F-11/F 5樓至11樓		3120	3120	3120	3120	3120	3120	3120	3120	3120	3120	3120	3120	3120	3120	3120	3120	3120	3120	3120	
12/F 12樓		3120, 3390	3390	3120, 3390	3120, 3390	3120, 3390	3120, 3390	3120, 3390	3120, 3390	3120, 3390	3120, 3390	3120, 3390	3390	3120, 3390	3120, 3390	3120, 3390	3120, 3390	3120, 3390	3120, 3390	3120, 3390	
Floor-to-floor height (mm) 層與層之間的高度(毫米)	Wing 2 2翼	5/F-11/F 5樓至11樓	3120	3120	3120	3120	3120	3120	3120	3120	3120	3120	3120	3120	3120	3120	3120	3120	3120	3120	3120
		12/F 12樓	3120, 3390	3390	3120, 3390	3120, 3390	3120, 3390	3120, 3390	3120, 3390	3120, 3390	3120, 3390	3120, 3390	3390	3120, 3390	3120, 3390	3120, 3390	3120, 3390	3120, 3390	3120, 3390	3120, 3390	3120, 3390

Notes:

- The internal areas of the residential properties on the upper floors will generally be slightly larger than those on the lower floors because of the reducing thickness of the structural walls on the upper floors.
- Please refer to page 18 of this Sales Brochure for legend of the terms and abbreviations used on the floor plan above and the explanatory notes that are applicable thereto.

備註:

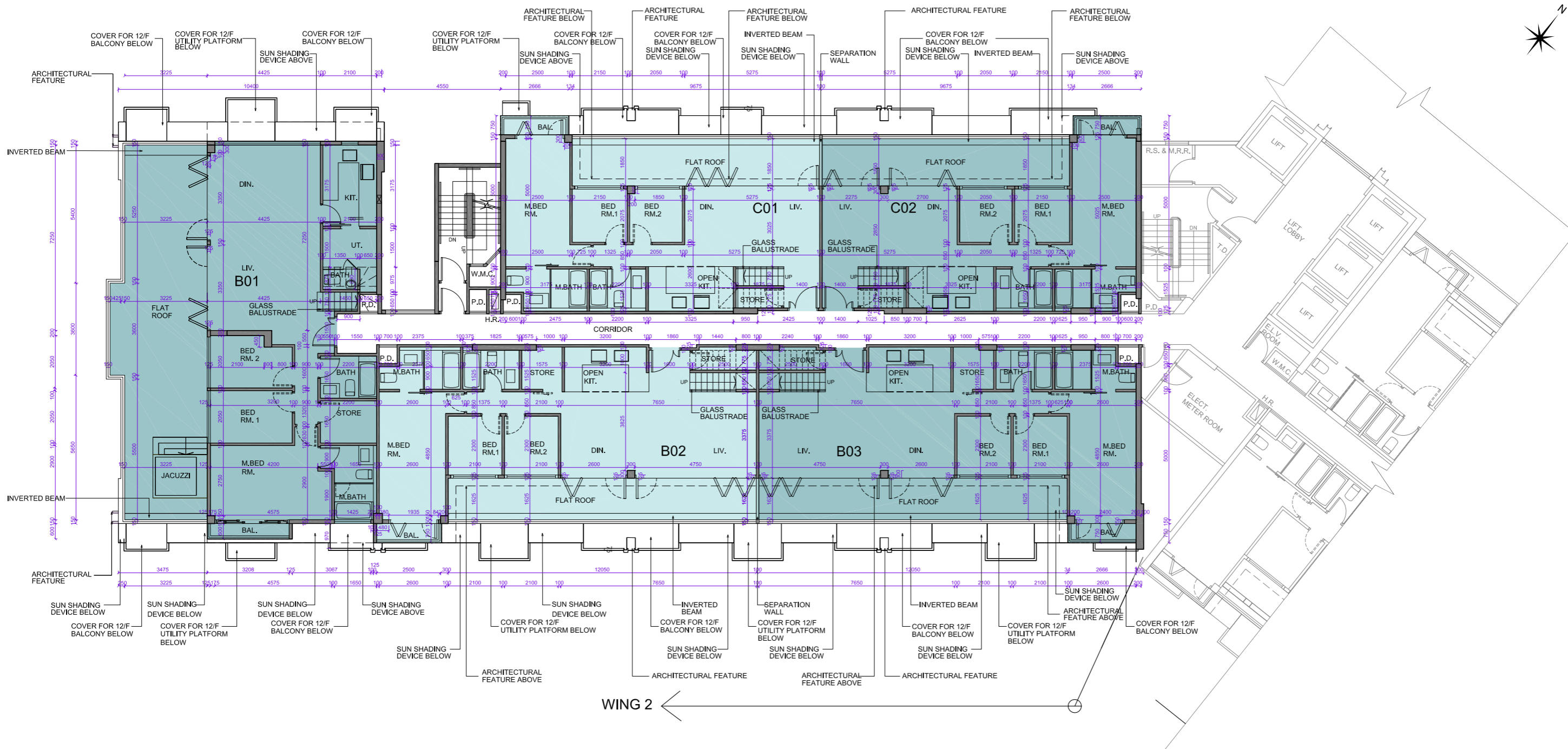
- 因住宅物業的較高樓層的結構牆的厚度遞減，較高樓層的內部面積，一般比較低樓層的內部面積稍大。
- 樓面平面圖中所使用名詞及簡稱之圖例及其適用的備註，請參閱本售樓說明書第18頁。

FLOOR PLANS OF RESIDENTIAL PROPERTIES IN THE DEVELOPMENT

發展項目的住宅物業的樓面平面圖

WING 2 15/F FLOOR PLAN

2翼 15樓平面圖

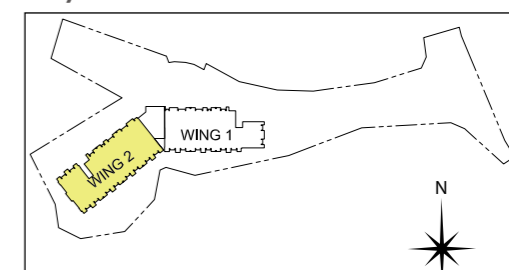


WING 2 ←

Note: The dimensions in the floor plan are all structural dimensions in millimeter.
備註: 樓面平面圖之尺規所列數字為以毫米標示之建築結構尺寸。



Key Plan 指示圖



FLOOR PLANS OF RESIDENTIAL PROPERTIES IN THE DEVELOPMENT

發展項目的住宅物業的樓面平面圖



WING 2 15/F FLOOR PLAN

2翼 15樓平面圖

Each of the Residential Property 每個住宅物業	Block Name 大廈名稱	Floor 樓層	Unit 單位				
			B01	B02	B03	C01	C02
Thickness of the floor slabs (excluding plaster)(mm) 樓板(不包括灰泥)的厚度(毫米)	Wing 2 2翼	15/F 15樓	175	175	175	175	175
Floor-to-floor height (mm) 層與層之間的高度(毫米)		15/F 15樓	3150	3150	3150	3150	3150

Notes:

1. The internal areas of the residential properties on the upper floors will generally be slightly larger than those on the lower floors because of the reducing thickness of the structural walls on the upper floors.
2. Please refer to page 18 of this Sales Brochure for legend of the terms and abbreviations used on the floor plan above and the explanatory notes that are applicable thereto.

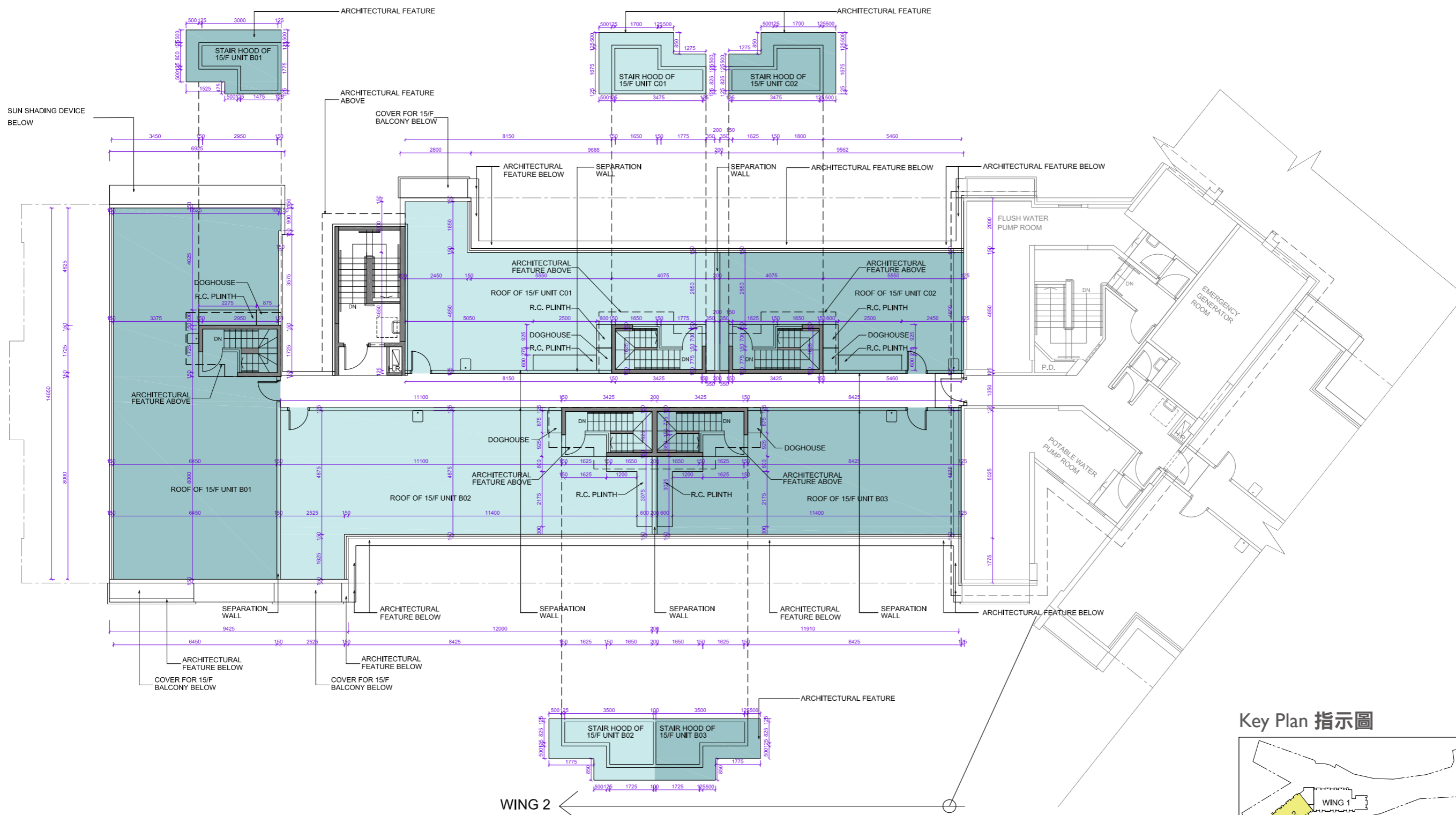
備註:

1. 因住宅物業的較高樓層的結構牆的厚度遞減，較高樓層的內部面積，一般比較低樓層的內部面積稍大。
2. 樓面平面圖中所使用名詞及簡稱之圖例及其適用的備註，請參閱本售樓說明書第18頁。

FLOOR PLANS OF RESIDENTIAL PROPERTIES IN THE DEVELOPMENT 發展項目的住宅物業的樓面平面圖

WING 2 2翼

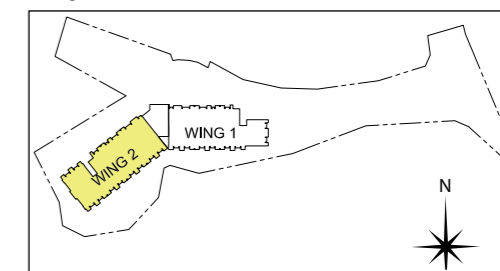
ROOF FLOOR PLAN 天台平面圖



Note: The dimensions in the floor plan are all structural dimensions in millimeter.
備註: 樓面平面圖之尺規所列數字為以毫米標示之建築結構尺寸。

Scale 比例 0 5M(米)

Key Plan 指示圖



FLOOR PLANS OF RESIDENTIAL PROPERTIES IN THE DEVELOPMENT 發展項目的住宅物業的樓面平面圖



WING 2 ROOF FLOOR PLAN 2翼 天台平面圖

Each of the Residential Property 每個住宅物業	Block Name 大廈名稱	Floor 樓層	Unit 單位				
			B01	B02	B03	C01	C02
Thickness of the floor slabs (excluding plaster)(mm) 樓板(不包括灰泥)的厚度(毫米)	Wing 2 2翼	Roof (Stairhood) 天台(梯屋)	175	175	175	175	175
Floor-to-floor height (mm) 層與層之間的高度(毫米)		Roof (Stairhood) 天台(梯屋)	2850	2850	2850	2850	2850

Notes:

1. The internal areas of the residential properties on the upper floors will generally be slightly larger than those on the lower floors because of the reducing thickness of the structural walls on the upper floors.
2. Please refer to page 18 of this Sales Brochure for legend of the terms and abbreviations used on the floor plan above and the explanatory notes that are applicable thereto.

備註:

1. 因住宅物業的較高樓層的結構牆的厚度遞減，較高樓層的內部面積，一般比較低樓層的內部面積稍大。
2. 樓面平面圖中所使用名詞及簡稱之圖例及其適用的備註，請參閱本售樓說明書第18頁。