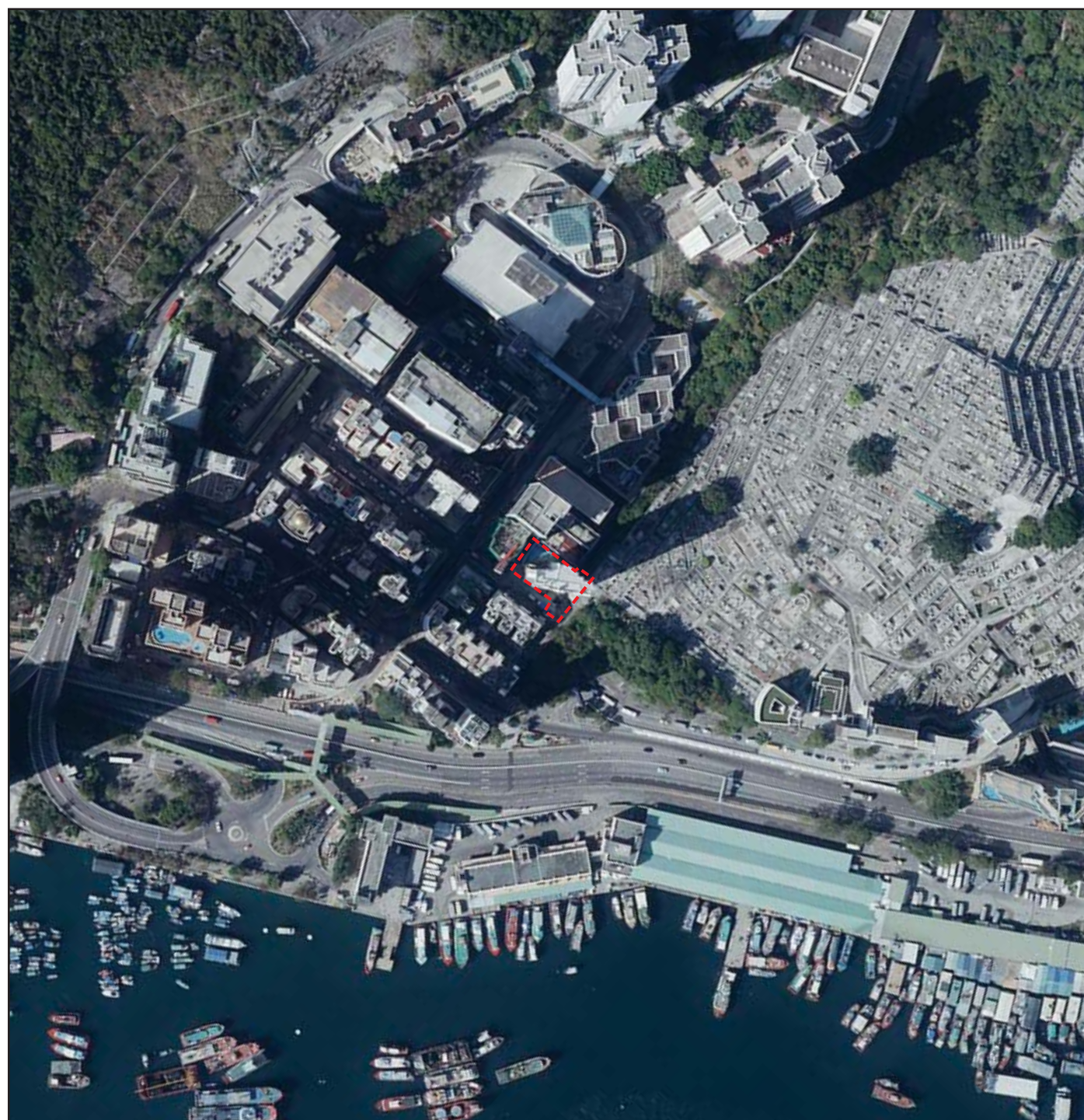



發展項目的鳥瞰照片

AERIAL PHOTOGRAPH OF THE DEVELOPMENT



 發展項目的所在位置
Location of the Development

摘錄自地政總署測繪處於2018年3月10日在香港仔6,000呎飛行高度拍攝之鳥瞰照片之部份，編號為E034357C。

Adopted from part of the aerial photograph taken by the Survey and Mapping Office of Lands Department at a flying height of 6,000 feet in ABERDEEN, Photo No. E034357C, dated 10 March 2018.

香港特別行政區政府地政總署測繪處©版權所有，未經許可，不得複製。

Survey and Mapping Office, Lands Department, The Government of HKSAR © Copyright reserved- reproduction by permission only.

備註：

由於發展項目的不規則界線引致的技術原因，上述鳥瞰照片所顯示的範圍多於《一手住宅物業銷售條例》要求顯示的範圍。

Remark:

The above Aerial Photograph has shown the area more than that required under the Residential Properties (First-hand Sales) Ordinance due to the technical reasons as a result of the irregular boundary of the Development.