

# Floor plans of residential properties in the phase of the development

## 發展項目期數的住宅物業的樓面平面圖

### Towers

Remarks applicable to the floor plans in this section :

1. There are architectural features and/or metal grilles and/or aluminium claddings and/or exposed pipes on the external walls of some of the floors. For details, please refer to the latest approved building plans and/or approved drainage plans and/or other relevant plans.
2. Common pipes exposed and/or enclosed in aluminium cladding are located at/adjacent to the balcony and/or flat roof and/or air-conditioner platform and/or external wall of some residential properties. For details, please refer to the latest approved building plans and/or approved drainage plans and/or other relevant plans.
3. There are sunken slabs for mechanical and electrical services and/or false ceilings/bulkheads for the air-conditioning fittings and/or mechanical and electrical services at some residential properties.
4. Balconies and Utility Platforms are non-enclosed areas.
5. Symbols of fittings and fitments such as bath tub, sink, water closet, shower, sink counter, etc. in the floor plans are prepared based on the latest approved building plans and are for general indication only.

### Houses

Remarks applicable to the floor plans in this section:

1. There are architectural features and/or metal grilles and/or aluminium cladding and/or exposed pipes on the external walls of some of the floors. For details, please refer to the latest approved building plans and/or approved drainage plans and/or other relevant plans.
2. There are sunken slabs for mechanical and electrical services and/or false ceiling/bulkheads at some of the houses for installation of air-conditioning fittings and/or mechanical and electrical services.
3. There are exposed pipes installed in some stores and toilets.
4. The voids inside houses are not to be decked over. For details, please refer to the latest approval building plans.
5. Balconies are non-enclosed areas.
6. The ground floor areas under Balconies are designated as non-enclosed areas. For details, please refer to the latest approval building plan.
7. Symbols of fittings and fitments such as bath tub, sink, water closet, shower, sink counter, etc. in the floor plans are prepared based on the latest approved building plans and are for general indication only.

### 大廈

適用於本節之樓面平面圖之備註：

1. 部分樓層外牆範圍設有建築裝飾及/或金屬格柵及/或鋁面板及/或外露喉管，詳細資料請參考最新經批准的建築圖則及/或經批准的排水設施圖則及/或其他相關圖則。
2. 部分住宅物業的露台及/或平台及/或空調機平台及/或外牆上或附近設有外露及/或鋁質裝飾板內藏之公用喉管，詳細資料請參考最新經批准的建築圖則及/或經批准的排水設施圖則及/或其他相關圖則。
3. 部分住宅物業有用以安裝機電設備的跌級樓板及/或用以裝置空調裝備及/或其他機電設備的假天花/裝飾橫樑。
4. 露台及工作平台為不可封閉的地方。
5. 樓面平面圖上所顯示的裝置符號，如浴缸、洗滌盆、坐廁、花灑、洗滌盆櫃等乃按最新經批准的建築圖則繪製，只作一般示意用途。

### 洋房

適用於本節之樓面平面圖之備註：

1. 部分樓層外牆範圍設有建築裝飾及/或金屬格柵及/或鋁面板及/或外露喉管，詳細資料請參考最新經批准的建築圖則及/或經批准的排水設施圖則及/或其他相關圖則。
2. 部分洋房有用以安裝機電設備的跌級樓板及/或用以裝置空調裝備及/或其他機電設備的假天花/裝飾橫樑。
3. 部分儲物房及廁所裝有外露喉管。
4. 洋房內的中空部分不可覆蓋。詳細資料請參考最新經批准的建築圖則。
5. 露台為不可封閉的地方。
6. 位於露台下方之地下位置為不可封閉的地方。詳細資料請參考最新經批准的建築圖則。
7. 樓面平面圖上所顯示的裝置符號，如浴缸、洗滌盆、坐廁、花灑、洗滌盆櫃等乃按最新的經批准的建築圖則繪製，只作一般示意用途。

## Floor plans of residential properties in the phase of the development

### 發展項目期數的住宅物業的樓面平面圖

Legend for floor plans of residential properties in the Phase of the Development

發展項目期數的住宅物業的樓面平面圖圖例

A/C PLATFORM = Air-conditioner Platform 空調機平台

A/C PLATFORM ABOVE = Air-conditioner Platform Above 上層空調機平台

A/C Plinth = Air-conditioner Plinth 空調機底座

A/C GRILLE = Air-conditioner Grille 空調機格柵

AC = Aluminum Cladding 鋁質裝飾板

AD = Air Duct 通風槽

AF = Architectural Feature 建築裝飾

AF ABOVE = Architectural Feature Above 上層建築裝飾

AF AT 1/F = Architectural Feature at 1/F 建築裝飾設於1樓

AF BELOW = Architectural Feature Below 下層建築裝飾

B = Bathroom 浴室

BAL = Balcony 露台

BAL ABOVE = Balcony Above 上層露台

BL ABOVE = Building Line Above 上層建築物邊線

BR = Bedroom 睡房

CAB = Cabinet 櫃

CANOPY = 簷篷

CANOPY ABOVE = Canopy Above 上層簷篷

COMMON FLAT ROOF = 公用平台

D = Down 下

DIN = Dining Room 飯廳

DOG HOUSE = Mechanical and Electrical Services Duct Connecting to the Floor Below  
連接下層的機電設施管道

EL = Electricity Duct 電線槽

EL & ELV = Electricity Duct and Extra Low Voltage Duct/Cabinet  
電線槽及低電壓槽/箱

EL & ELV RM. = Electricity and Extra Low Voltage Room 電力及低電壓房

ELV = Extra Low Voltage Duct/Cabinet 低電壓槽/箱

FSI = Fire Service Inlet 消防入水掣

FLAT ROOF = 平台

GARDEN = 花園

HR = Hose Reel 消防喉轆

KIT = Kitchen 廚房

LAV = Lavatory 洗手間

LIFT = 升降機

LIFT LOBBY = 升降機大堂

LIGHT WELL = 光井

LIV = Living Room 客廳

MB = Master Bathroom 主人浴室

MBR = Master Bedroom 主人睡房

METAL CLADDING = 金屬裝飾板

OPEN KIT = Open Kitchen 開放式廚房

PD = Pipe Duct 管道槽

RS & MRR = Refuse Storage and Material Recovery Room 垃圾及物料回收室

ROOF = 天台

SPRINKLER CONTROL VALVE = 消防花酒控制閥

STO = Store 儲物房

U = Up 上

UP = Utility Platform 工作平台

UP ABOVE = Utility Platform Above 上層工作平台

UTILITY = Utility Room 工作間

VD = Ventilation Duct 通風槽

VOID = 中空

WMC = Water Meter Cabinet 水錶箱

WMR = Water Meter Room 水錶房

# Floor plans of residential properties in the phase of the development

## 發展項目期數的住宅物業的樓面平面圖

Tower 1  
第1座

G/F  
地下

Description 描述	Flat 單位														
	B1	B2	B3	B5	B6	B7	D1	D2	D3	D5	D6	D7	D8	D9	D10
Floor-to-floor height (refers to the height between the top surface of the structural slab of a floor and the top surface of the structural slab of its immediate upper floor) of each residential property (m) 每個住宅物業的層與層之間的高度(指該樓層之石屎地台面與上一層石屎地台面之高度距離)(米)	3.05 3.40 3.55 3.65 3.90	3.15 3.40 3.55 3.65 3.90	3.15 3.40 3.55 3.90	3.40 3.55 3.90	3.05 3.40 3.55 3.65 3.90	3.40 3.55 3.65 3.90	3.05 3.15 3.40 3.55 3.65 3.90	3.05 3.40 3.55 3.65 3.90	3.05 3.40 3.55 3.65 3.90	3.20 3.40 3.55 3.65 3.90	3.15 3.40 3.55 3.90	3.05 3.15 3.40 3.55 3.65 3.90	3.05 3.15 3.40 3.55 3.65 3.90	3.05 3.15 3.40 3.55 3.65 3.90	3.15 3.40 3.55 3.65 3.90
Thickness of the floor slabs (excluding plaster) of each residential property (mm) 每個住宅物業的樓板(不包括灰泥)厚度(毫米)	150 200	150	150 175		150				150 175	175	150		150 175		150

The internal areas of the residential properties on the upper floors will generally be slightly larger than those on the lower floors because of the reducing thickness of the structural walls on the upper floors.

Remark : The dimensions in the floor plans are all structural dimensions in millimetre.

### Legend 圖例

A/C PLATFORM = Air-conditioner Platform 空調機平台  
 A/C PLATFORM ABOVE = Air-conditioner Platform Above 上層空調機平台  
 A/C Plinth = Air-conditioner Plinth 空調機底座  
 A/C GRILLE = Air-conditioner Grille 空調機格柵  
 AC = Aluminum Cladding 鋁質裝飾板  
 AD = Air Duct 通風槽  
 AF = Architectural Feature 建築裝飾  
 AF ABOVE = Architectural Feature Above 上層建築裝飾  
 AF AT 1/F = Architectural Feature at 1/F 建築裝飾設於1樓  
 AF BELOW = Architectural Feature Below 下層建築裝飾  
 B = Bathroom 浴室  
 BAL = Balcony 露台  
 BAL ABOVE = Balcony Above 上層露台  
 BL ABOVE = Building Line Above 上層建築物邊線  
 BR = Bedroom 睡房  
 CAB = Cabinet 櫃  
 CANOPY = 簷篷  
 CANOPY ABOVE = Canopy Above 上層簷篷  
 COMMON FLAT ROOF = 公用平台  
 D = Down 下  
 DIN = Dining Room 飯廳  
 DOG HOUSE = Mechanical and Electrical Services Duct Connecting to the Floor Below  
 連接下層的機電設施管道  
 EL = Electricity Duct 電線槽  
 EL & ELV = Electricity Duct and Extra Low Voltage Duct/Cabinet  
 電線槽及低電壓槽/箱  
 EL & ELV RM. = Electricity and Extra Low Voltage Room 電力及低電壓房

因住宅物業的較高樓層的結構牆的厚度遞減，較高樓層的內部面積，一般比較低樓層的內部面積稍大。

備註：樓面平面圖之尺規所列數字為以毫米標示之建築結構尺寸。

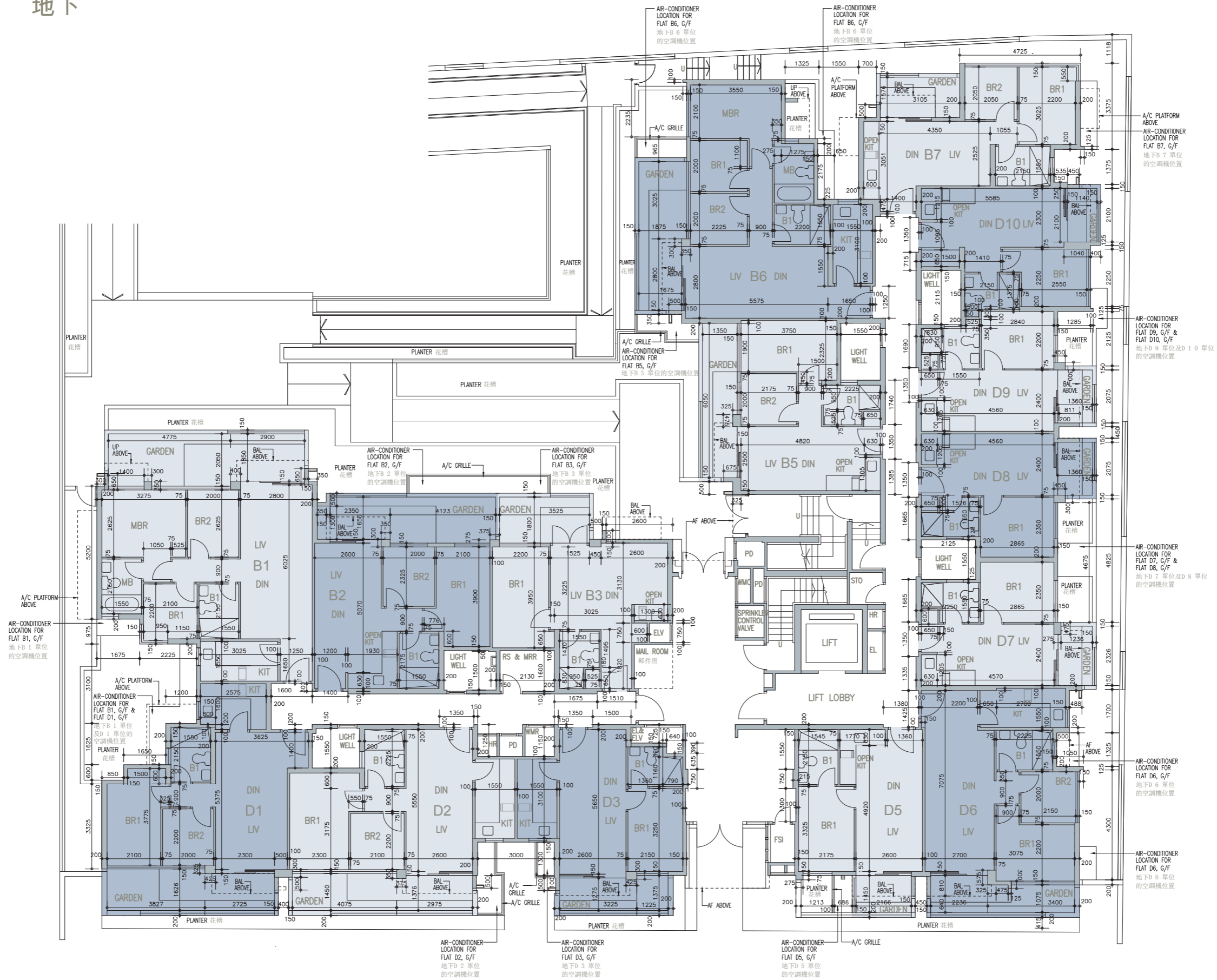
ELV = Extra Low Voltage Duct/Cabinet 低電壓槽/箱  
 FSI = Fire Service Inlet 消防入水掣  
 FLAT ROOF = 平台  
 GARDEN = 花園  
 HR = Hose Reel 消防喉轆  
 KIT = Kitchen 廚房  
 LAV = Lavatory 洗手間  
 LIFT = 升降機  
 LIFT LOBBY = 升降機大堂  
 LIGHT WELL = 光井  
 LIV = Living Room 客廳  
 MB = Master Bathroom 主人浴室  
 MBR = Master Bedroom 主人睡房  
 METAL CLADDING = 金屬裝飾板  
 OPEN KIT = Open Kitchen 開放式廚房  
 PD = Pipe Duct 管道槽  
 RS & MRR = Refuse Storage and Material Recovery Room 垃圾及物料回收室  
 ROOF = 天台  
 SPRINKLER CONTROL VALVE = 消防花酒控制閥  
 STO = Store 儲物房  
 U = Up 上  
 UP = Utility Platform 工作平台  
 UP ABOVE = Utility Platform Above 上層工作平台  
 UTILITY = Utility Room 工作間  
 VD = Ventilation Duct 通風槽  
 VOID = 中空  
 WMC = Water Meter Cabinet 水錶箱  
 WMR = Water Meter Room 水錶房

# Floor plans of residential properties in the phase of the development

## 發展項目期數的住宅物業的樓面平面圖

Tower 1  
第1座

G/F  
地下



Scale 比例  
0 1 2 3 4 5M(米)

## Floor plans of residential properties in the phase of the development

### 發展項目期數的住宅物業的樓面平面圖

Tower 1  
第1座

1/F  
1樓

Description 描述	Flat 單位														
	B1	B2	B3	B5	B6	B7	D1	D2	D3	D5	D6	D7	D8	D9	D10
Floor-to-floor height (refers to the height between the top surface of the structural slab of a floor and the top surface of the structural slab of its immediate upper floor) of each residential property (m) 每個住宅物業的層與層之間的高度(指該樓層之石屎地台面與上一層石屎地台面之高度距離)(米)	3.00														
Thickness of the floor slabs (excluding plaster) of each residential property (mm) 每個住宅物業的樓板(不包括灰泥)厚度(毫米)	150 200				150				150 175	175		150		150 175	150

The internal areas of the residential properties on the upper floors will generally be slightly larger than those on the lower floors because of the reducing thickness of the structural walls on the upper floors.

Remark : The dimensions in the floor plans are all structural dimensions in millimetre.

#### Legend 圖例

A/C PLATFORM = Air-conditioner Platform 空調機平台  
 A/C PLATFORM ABOVE = Air-conditioner Platform Above 上層空調機平台  
 A/C Plinth = Air-conditioner Plinth 空調機底座  
 A/C GRILLE = Air-conditioner Grille 空調機格柵  
 AC = Aluminum Cladding 鋁質裝飾板  
 AD = Air Duct 通風槽  
 AF = Architectural Feature 建築裝飾  
 AF ABOVE = Architectural Feature Above 上層建築裝飾  
 AF AT 1/F = Architectural Feature at 1/F 建築裝飾設於1樓  
 AF BELOW = Architectural Feature Below 下層建築裝飾  
 B = Bathroom 浴室  
 BAL = Balcony 露台  
 BAL ABOVE = Balcony Above 上層露台  
 BL ABOVE = Building Line Above 上層建築物邊線  
 BR = Bedroom 睡房  
 CAB = Cabinet 櫃  
 CANOPY = 簷篷  
 CANOPY ABOVE = Canopy Above 上層簷篷  
 COMMON FLAT ROOF = 公用平台  
 D = Down 下  
 DIN = Dining Room 飯廳  
 DOG HOUSE = Mechanical and Electrical Services Duct Connecting to the Floor Below  
 連接下層的機電設施管道  
 EL = Electricity Duct 電線槽  
 EL & ELV = Electricity Duct and Extra Low Voltage Duct/Cabinet  
 電線槽及低電壓槽/箱  
 EL & ELV RM. = Electricity and Extra Low Voltage Room 電力及低電壓房

因住宅物業的較高樓層的結構牆的厚度遞減，較高樓層的內部面積，一般比較低樓層的內部面積稍大。

備註：樓面平面圖之尺規所列數字為以毫米標示之建築結構尺寸。

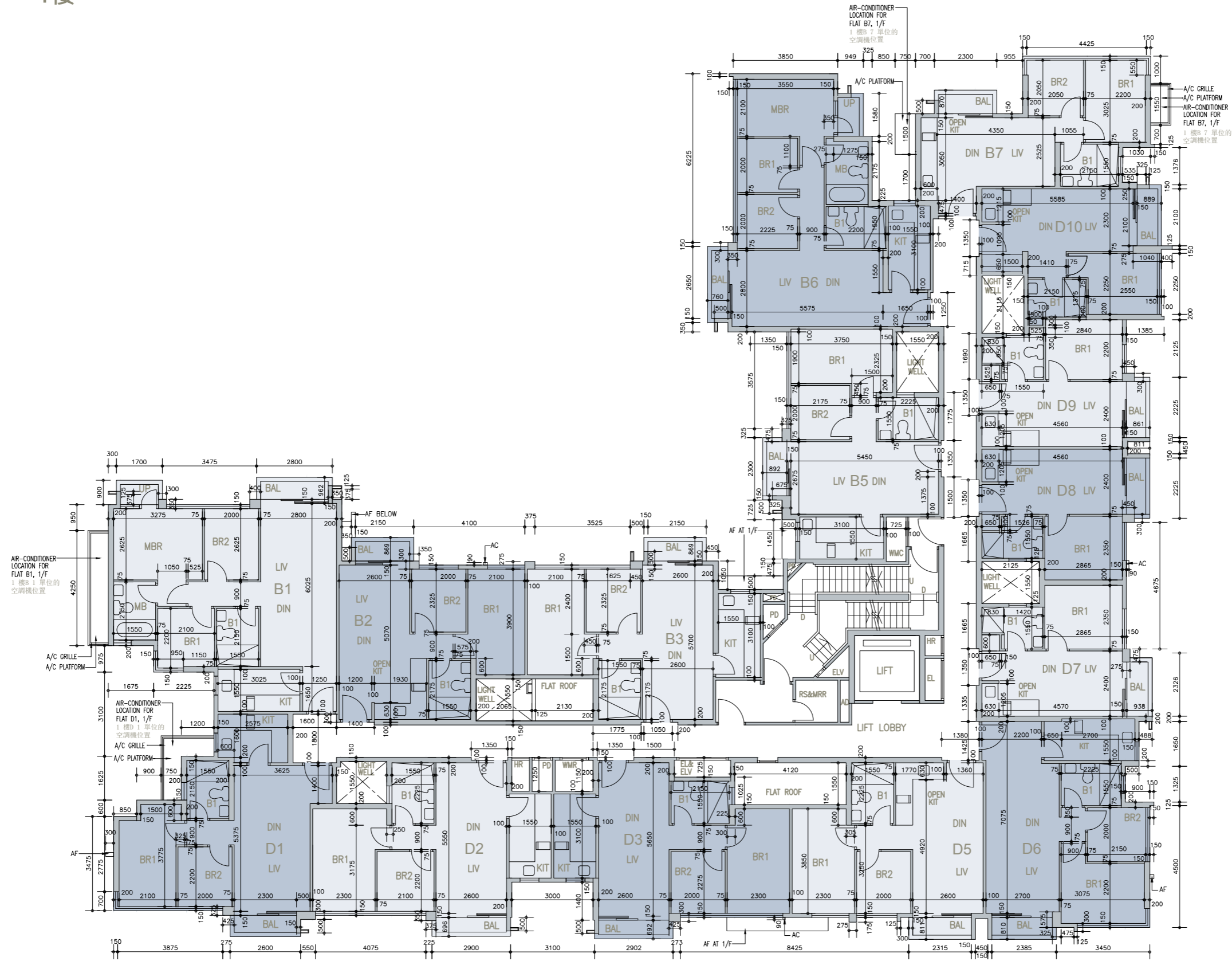
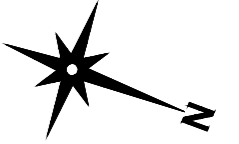
ELV = Extra Low Voltage Duct/Cabinet 低電壓槽/箱  
 FSI = Fire Service Inlet 消防入水掣  
 FLAT ROOF = 平台  
 GARDEN = 花園  
 HR = Hose Reel 消防喉轆  
 KIT = Kitchen 廚房  
 LAV = Lavatory 洗手間  
 LIFT = 升降機  
 LIFT LOBBY = 升降機大堂  
 LIGHT WELL = 光井  
 LIV = Living Room 客廳  
 MB = Master Bathroom 主人浴室  
 MBR = Master Bedroom 主人睡房  
 METAL CLADDING = 金屬裝飾板  
 OPEN KIT = Open Kitchen 開放式廚房  
 PD = Pipe Duct 管道槽  
 RS & MRR = Refuse Storage and Material Recovery Room 垃圾及物料回收室  
 ROOF = 天台  
 SPRINKLER CONTROL VALVE = 消防花灑控制閥  
 STO = Store 儲物房  
 U = Up 上  
 UP = Utility Platform 工作平台  
 UP ABOVE = Utility Platform Above 上層工作平台  
 UTILITY = Utility Room 工作間  
 VD = Ventilation Duct 通風槽  
 VOID = 中空  
 WMC = Water Meter Cabinet 水錶箱  
 WMR = Water Meter Room 水錶房

# Floor plans of residential properties in the phase of the development

## 發展項目期數的住宅物業的樓面平面圖

Tower 1  
第1座

1/F  
1樓



## Floor plans of residential properties in the phase of the development

### 發展項目期數的住宅物業的樓面平面圖

Tower 1      2/F  
第1座      2樓

Description 描述	Flat 單位														
	B1	B2	B3	B5	B6	B7	D1	D2	D3	D5	D6	D7	D8	D9	D10
Floor-to-floor height (refers to the height between the top surface of the structural slab of a floor and the top surface of the structural slab of its immediate upper floor) of each residential property (m) 每個住宅物業的層與層之間的高度(指該樓層之石屎地台面與上一層石屎地台面之高度距離)(米)	3.00														
Thickness of the floor slabs (excluding plaster) of each residential property (mm) 每個住宅物業的樓板(不包括灰泥)厚度(毫米)	150 200				150				150 175	175		150		150 175	150

The internal areas of the residential properties on the upper floors will generally be slightly larger than those on the lower floors because of the reducing thickness of the structural walls on the upper floors.

Remark : The dimensions in the floor plans are all structural dimensions in millimetre.

#### Legend 圖例

A/C PLATFORM = Air-conditioner Platform 空調機平台  
A/C PLATFORM ABOVE = Air-conditioner Platform Above 上層空調機平台  
A/C Plinth = Air-conditioner Plinth 空調機底座  
A/C GRILLE = Air-conditioner Grille 空調機格柵  
AC = Aluminum Cladding 鋁質裝飾板  
AD = Air Duct 通風槽  
AF = Architectural Feature 建築裝飾  
AF ABOVE = Architectural Feature Above 上層建築裝飾  
AF AT 1/F = Architectural Feature at 1/F 建築裝飾設於1樓  
AF BELOW = Architectural Feature Below 下層建築裝飾  
B = Bathroom 浴室  
BAL = Balcony 露台  
BAL ABOVE = Balcony Above 上層露台  
BL ABOVE = Building Line Above 上層建築物邊線  
BR = Bedroom 睡房  
CAB = Cabinet 櫃  
CANOPY = 簷篷  
CANOPY ABOVE = Canopy Above 上層簷篷  
COMMON FLAT ROOF = 公用平台  
D = Down 下  
DIN = Dining Room 飯廳  
DOG HOUSE = Mechanical and Electrical Services Duct Connecting to the Floor Below  
連接下層的機電設施管道  
EL = Electricity Duct 電線槽  
EL & ELV = Electricity Duct and Extra Low Voltage Duct/Cabinet  
電線槽及低電壓槽/箱  
EL & ELV RM. = Electricity and Extra Low Voltage Room 電力及低電壓房

因住宅物業的較高樓層的結構牆的厚度遞減，較高樓層的內部面積，一般比較低樓層的內部面積稍大。

備註：樓面平面圖之尺規所列數字為以毫米標示之建築結構尺寸。

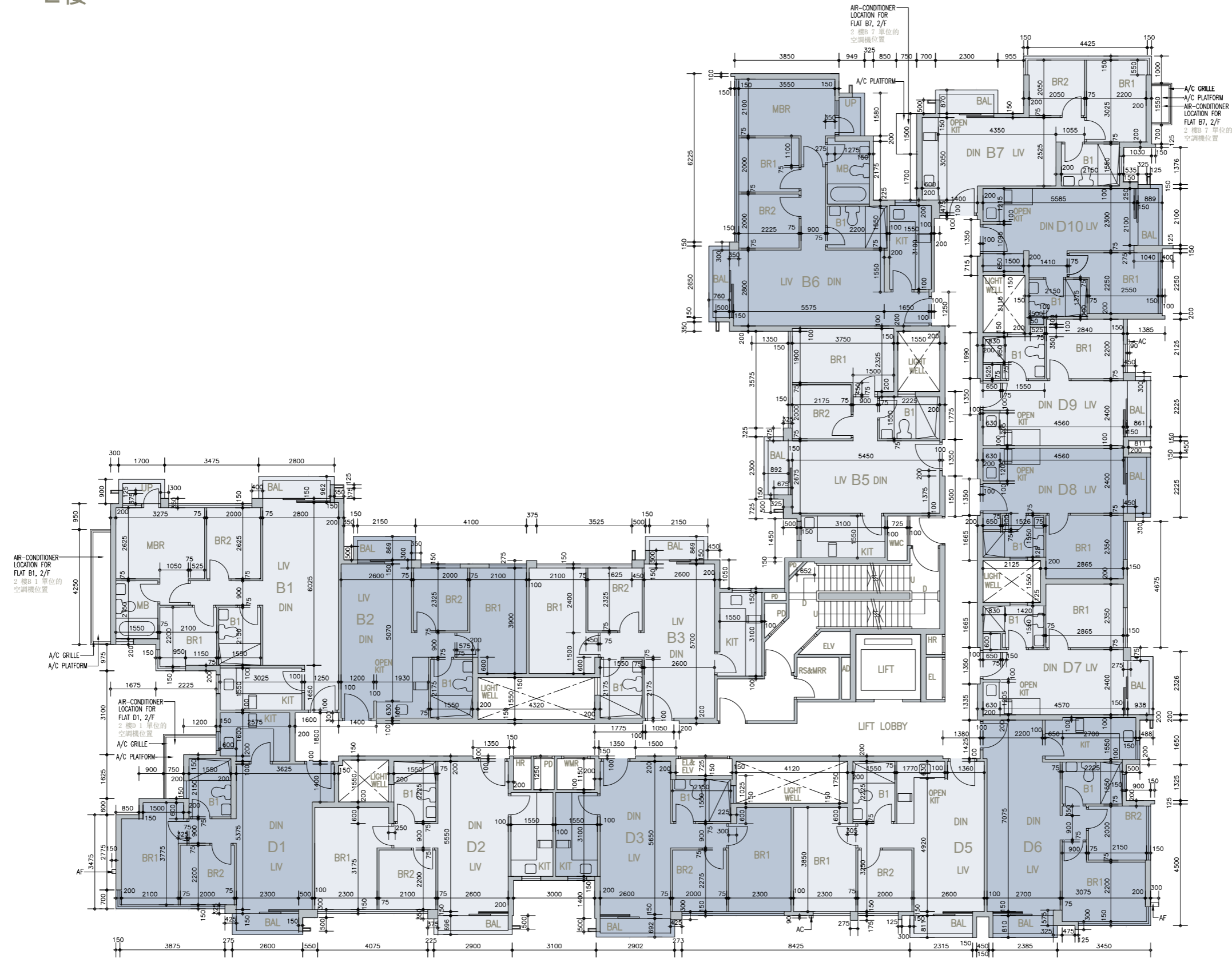
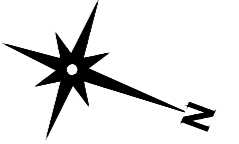
ELV = Extra Low Voltage Duct/Cabinet 低電壓槽/箱  
FSI = Fire Service Inlet 消防入水掣  
FLAT ROOF = 平台  
GARDEN = 花園  
HR = Hose Reel 消防喉轆  
KIT = Kitchen 廚房  
LAV = Lavatory 洗手間  
LIFT = 升降機  
LIFT LOBBY = 升降機大堂  
LIGHT WELL = 光井  
LIV = Living Room 客廳  
MB = Master Bathroom 主人浴室  
MBR = Master Bedroom 主人睡房  
METAL CLADDING = 金屬裝飾板  
OPEN KIT = Open Kitchen 開放式廚房  
PD = Pipe Duct 管道槽  
RS & MRR = Refuse Storage and Material Recovery Room 垃圾及物料回收室  
ROOF = 天台  
SPRINKLER CONTROL VALVE = 消防花酒控制閥  
STO = Store 儲物房  
U = Up 上  
UP = Utility Platform 工作平台  
UP ABOVE = Utility Platform Above 上層工作平台  
UTILITY = Utility Room 工作間  
VD = Ventilation Duct 通風槽  
VOID = 中空  
WMC = Water Meter Cabinet 水錶箱  
WMR = Water Meter Room 水錶房

# Floor plans of residential properties in the phase of the development

## 發展項目期數的住宅物業的樓面平面圖

Tower 1  
第1座

2/F  
2樓





## Floor plans of residential properties in the phase of the development

### 發展項目期數的住宅物業的樓面平面圖

Tower 1      3/F  
第1座      3樓

Description 描述	Flat 單位														
	B1	B2	B3	B5	B6	B7	D1	D2	D3	D5	D6	D7	D8	D9	D10
Floor-to-floor height (refers to the height between the top surface of the structural slab of a floor and the top surface of the structural slab of its immediate upper floor) of each residential property (m) 每個住宅物業的層與層之間的高度(指該樓層之石屎地台面與上一層石屎地台面之高度距離)(米)		3.00 3.25 3.35		3.00 3.20 3.35			3.00 3.25 3.35			3.00 3.20 3.25 3.35			3.00 3.25 3.35		
Thickness of the floor slabs (excluding plaster) of each residential property (mm) 每個住宅物業的樓板(不包括灰泥)厚度(毫米)	175 200						175						175 200		175

The internal areas of the residential properties on the upper floors will generally be slightly larger than those on the lower floors because of the reducing thickness of the structural walls on the upper floors.

Remark : The dimensions in the floor plans are all structural dimensions in millimetre.

#### Legend 圖例

A/C PLATFORM = Air-conditioner Platform 空調機平台  
A/C PLATFORM ABOVE = Air-conditioner Platform Above 上層空調機平台  
A/C Plinth = Air-conditioner Plinth 空調機底座  
A/C GRILLE = Air-conditioner Grille 空調機格柵  
AC = Aluminum Cladding 鋁質裝飾板  
AD = Air Duct 通風槽  
AF = Architectural Feature 建築裝飾  
AF ABOVE = Architectural Feature Above 上層建築裝飾  
AF AT 1/F = Architectural Feature at 1/F 建築裝飾設於1樓  
AF BELOW = Architectural Feature Below 下層建築裝飾  
B = Bathroom 浴室  
BAL = Balcony 露台  
BAL ABOVE = Balcony Above 上層露台  
BL ABOVE = Building Line Above 上層建築物邊線  
BR = Bedroom 睡房  
CAB = Cabinet 櫃  
CANOPY = 簷篷  
CANOPY ABOVE = Canopy Above 上層簷篷  
COMMON FLAT ROOF = 公用平台  
D = Down 下  
DIN = Dining Room 飯廳  
DOG HOUSE = Mechanical and Electrical Services Duct Connecting to the Floor Below  
連接下層的機電設施管道  
EL = Electricity Duct 電線槽  
EL & ELV = Electricity Duct and Extra Low Voltage Duct/Cabinet  
電線槽及低電壓槽/箱  
EL & ELV RM. = Electricity and Extra Low Voltage Room 電力及低電壓房

因住宅物業的較高樓層的結構牆的厚度遞減，較高樓層的內部面積，一般比較低樓層的內部面積稍大。

備註：樓面平面圖之尺規所列數字為以毫米標示之建築結構尺寸。

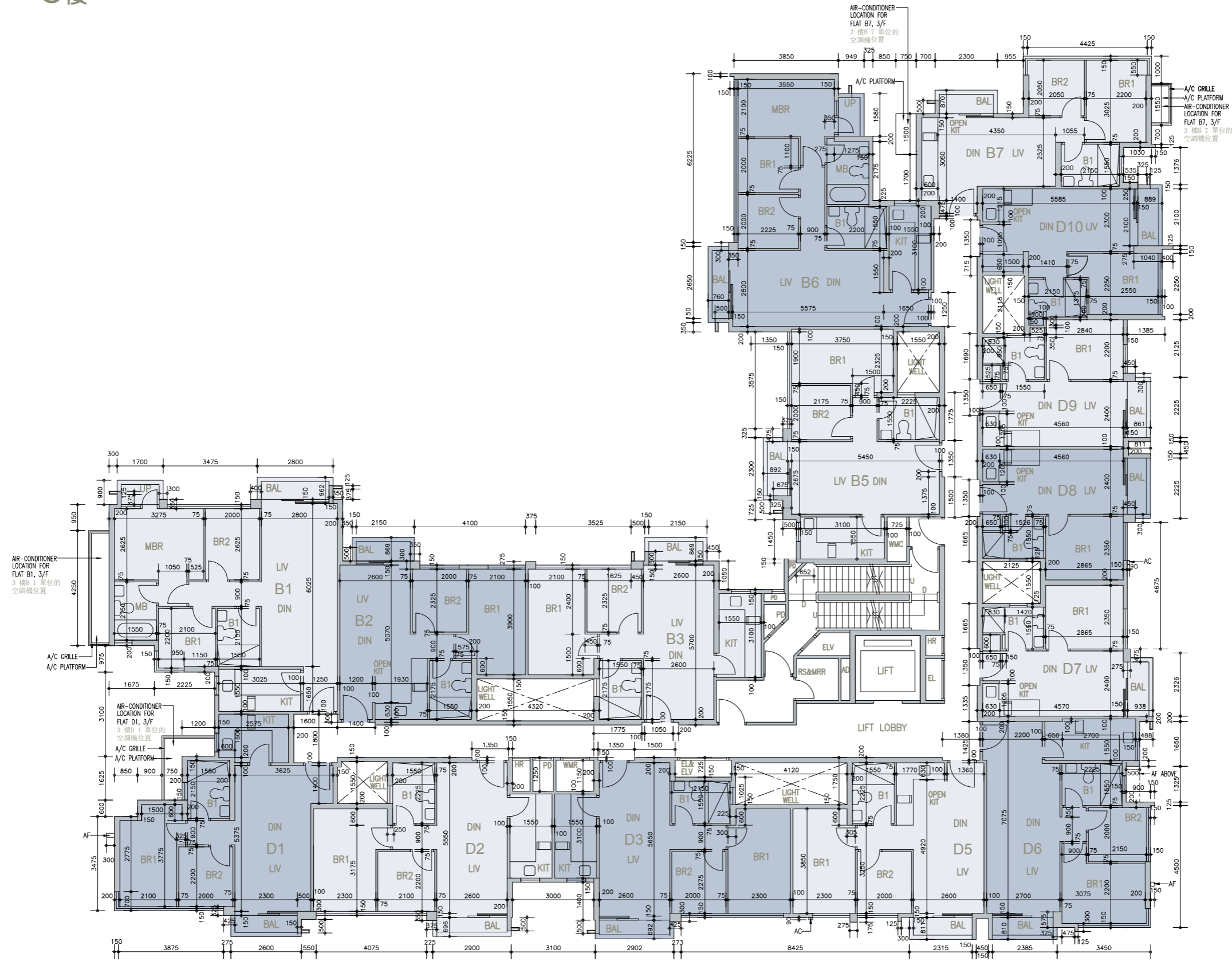
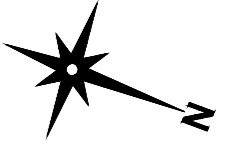
ELV = Extra Low Voltage Duct/Cabinet 低電壓槽/箱  
FSI = Fire Service Inlet 消防入水掣  
FLAT ROOF = 平台  
GARDEN = 花園  
HR = Hose Reel 消防喉轆  
KIT = Kitchen 廚房  
LAV = Lavatory 洗手間  
LIFT = 升降機  
LIFT LOBBY = 升降機大堂  
LIGHT WELL = 光井  
LIV = Living Room 客廳  
MB = Master Bathroom 主人浴室  
MBR = Master Bedroom 主人睡房  
METAL CLADDING = 金屬裝飾板  
OPEN KIT = Open Kitchen 開放式廚房  
PD = Pipe Duct 管道槽  
RS & MRR = Refuse Storage and Material Recovery Room 垃圾及物料回收室  
ROOF = 天台  
SPRINKLER CONTROL VALVE = 消防花酒控制閥  
STO = Store 儲物房  
U = Up 上  
UP = Utility Platform 工作平台  
UP ABOVE = Utility Platform Above 上層工作平台  
UTILITY = Utility Room 工作間  
VD = Ventilation Duct 通風槽  
VOID = 中空  
WMC = Water Meter Cabinet 水錶箱  
WMR = Water Meter Room 水錶房

# Floor plans of residential properties in the phase of the development

## 發展項目期數的住宅物業的樓面平面圖

Tower 1  
第1座

3/F  
3樓



# Floor plans of residential properties in the phase of the development

## 發展項目期數的住宅物業的樓面平面圖

Tower 1  
第1座

Roof  
天台

The internal areas of the residential properties on the upper floors will generally be slightly larger than those on the lower floors because of the reducing thickness of the structural walls on the upper floors.

Remark : The dimensions in the floor plans are all structural dimensions in millimetre.

### Legend 圖例

A/C PLATFORM = Air-conditioner Platform 空調機平台

A/C PLATFORM ABOVE = Air-conditioner Platform Above 上層空調機平台

A/C Plinth = Air-conditioner Plinth 空調機底座

A/C GRILLE = Air-conditioner Grille 空調機格柵

AC = Aluminum Cladding 鋁質裝飾板

AD = Air Duct 通風槽

AF = Architectural Feature 建築裝飾

AF ABOVE = Architectural Feature Above 上層建築裝飾

AF AT 1/F = Architectural Feature at 1/F 建築裝飾設於1樓

AF BELOW = Architectural Feature Below 下層建築裝飾

B = Bathroom 浴室

BAL = Balcony 露台

BAL ABOVE = Balcony Above 上層露台

BL ABOVE = Building Line Above 上層建築物邊線

BR = Bedroom 睡房

CAB = Cabinet 櫃

CANOPY = 簷篷

CANOPY ABOVE = Canopy Above 上層簷篷

COMMON FLAT ROOF = 公用平台

D = Down 下

DIN = Dining Room 飯廳

DOG HOUSE = Mechanical and Electrical Services Duct Connecting to the Floor Below  
連接下層的機電設施管道

EL = Electricity Duct 電線槽

EL & ELV = Electricity Duct and Extra Low Voltage Duct/Cabinet  
電線槽及低電壓槽/箱

EL & ELV RM. = Electricity and Extra Low Voltage Room 電力及低電壓房

因住宅物業的較高樓層的結構牆的厚度遞減，較高樓層的內部面積，一般比較低樓層的內部面積稍大。

備註：樓面平面圖之尺規所列數字為以毫米標示之建築結構尺寸。

ELV = Extra Low Voltage Duct/Cabinet 低電壓槽/箱

FSI = Fire Service Inlet 消防入水掣

FLAT ROOF = 平台

GARDEN = 花園

HR = Hose Reel 消防喉轆

KIT = Kitchen 廚房

LAV = Lavatory 洗手間

LIFT = 升降機

LIFT LOBBY = 升降機大堂

LIGHT WELL = 光井

LIV = Living Room 客廳

MB = Master Bathroom 主人浴室

MBR = Master Bedroom 主人睡房

METAL CLADDING = 金屬裝飾板

OPEN KIT = Open Kitchen 開放式廚房

PD = Pipe Duct 管道槽

RS & MRR = Refuse Storage and Material Recovery Room 垃圾及物料回收室

ROOF = 天台

SPRINKLER CONTROL VALVE = 消防花酒控制閥

STO = Store 儲物房

U = Up 上

UP = Utility Platform 工作平台

UP ABOVE = Utility Platform Above 上層工作平台

UTILITY = Utility Room 工作間

VD = Ventilation Duct 通風槽

VOID = 中空

WMC = Water Meter Cabinet 水錶箱

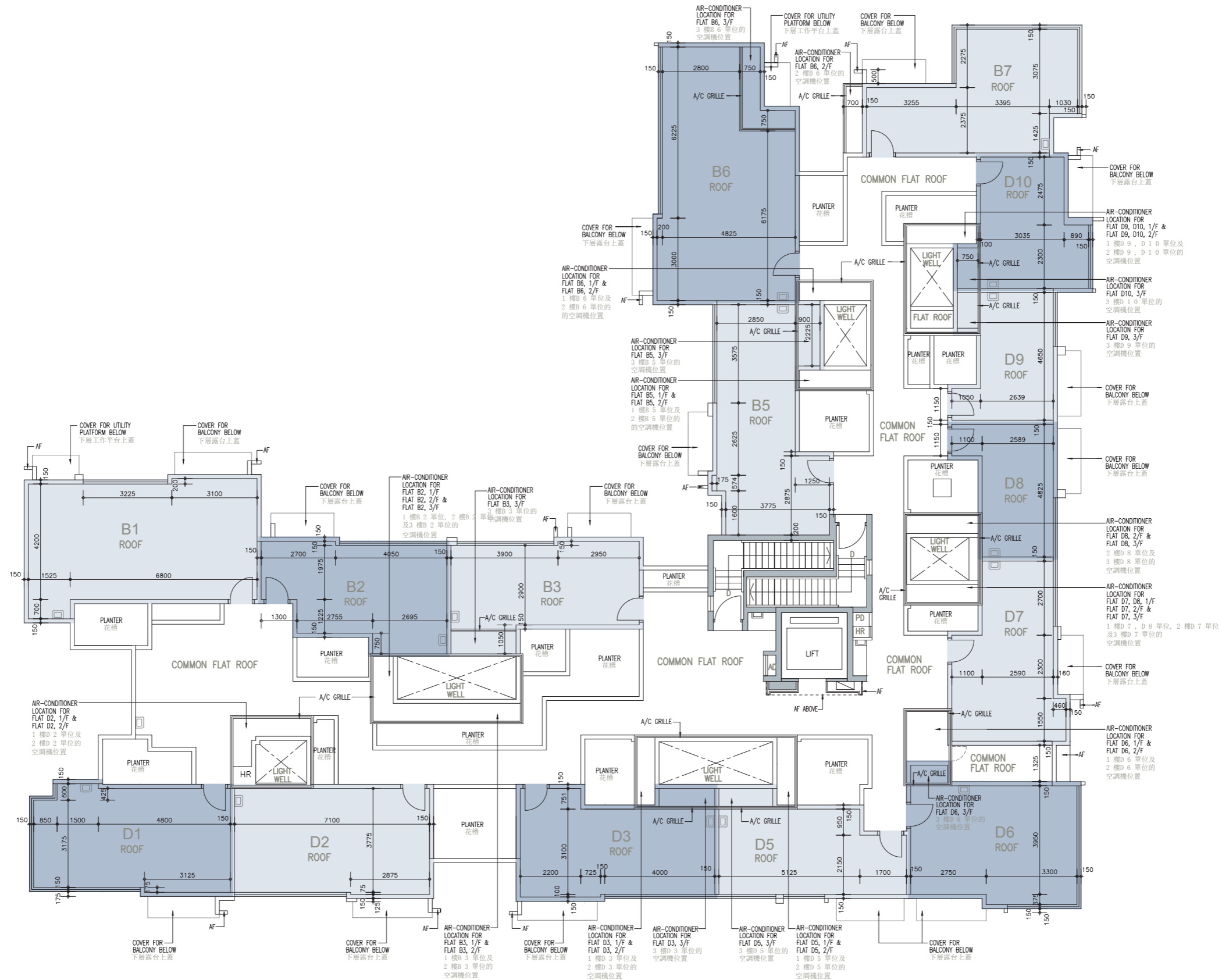
WMR = Water Meter Room 水錶房

# Floor plans of residential properties in the phase of the development

## 發展項目期數的住宅物業的樓面平面圖

Tower 1  
第1座

Roof  
天台



## Floor plans of residential properties in the phase of the development

### 發展項目期數的住宅物業的樓面平面圖

Tower 2  
第2座

G/F  
地下

Description 描述	Flat 單位												
	A1	A2	A3	A5	A6	A7	C1	C2	C3	C5	C6	C7	C8
Floor-to-floor height (refers to the height between the top surface of the structural slab of a floor and the top surface of the structural slab of its immediate upper floor) of each residential property (m) 每個住宅物業的層與層之間的高度(指該樓層之石屎地台面與上一層石屎地台面之高度距離)(米)	3.05	3.40		3.05	3.40	3.40	3.05	3.05	3.05		3.15	3.05	
	3.40	3.55		3.40	3.55	3.55	3.40	3.40	3.40	3.55	3.40	3.40	
	3.55	3.60		3.55	3.60	3.65	3.60	3.55	3.55	3.65	3.55	3.55	
	3.90	3.90		3.60	3.60	3.90	3.90	3.65	3.60	3.90	3.90	3.90	
Thickness of the floor slabs (excluding plaster) of each residential property (mm) 每個住宅物業的樓板(不包括灰泥)厚度(毫米)	150 175	150 200	150 175 200	150 200	150	150	150 175 200	150 200	150	175	150 200	150	150

The internal areas of the residential properties on the upper floors will generally be slightly larger than those on the lower floors because of the reducing thickness of the structural walls on the upper floors.

Remark : The dimensions in the floor plans are all structural dimensions in millimetre.

#### Legend 圖例

A/C PLATFORM = Air-conditioner Platform 空調機平台  
 A/C PLATFORM ABOVE = Air-conditioner Platform Above 上層空調機平台  
 A/C Plinth = Air-conditioner Plinth 空調機底座  
 A/C GRILLE = Air-conditioner Grille 空調機格柵  
 AC = Aluminum Cladding 鋁質裝飾板  
 AD = Air Duct 通風槽  
 AF = Architectural Feature 建築裝飾  
 AF ABOVE = Architectural Feature Above 上層建築裝飾  
 AF AT 1/F = Architectural Feature at 1/F 建築裝飾設於1樓  
 AF BELOW = Architectural Feature Below 下層建築裝飾  
 B = Bathroom 浴室  
 BAL = Balcony 露台  
 BAL ABOVE = Balcony Above 上層露台  
 BL ABOVE = Building Line Above 上層建築物邊線  
 BR = Bedroom 睡房  
 CAB = Cabinet 櫃  
 CANOPY = 簷篷  
 CANOPY ABOVE = Canopy Above 上層簷篷  
 COMMON FLAT ROOF = 公用平台  
 D = Down 下  
 DIN = Dining Room 飯廳  
 DOG HOUSE = Mechanical and Electrical Services Duct Connecting to the Floor Below  
 連接下層的機電設施管道  
 EL = Electricity Duct 電線槽  
 EL & ELV = Electricity Duct and Extra Low Voltage Duct/Cabinet  
 電線槽及低電壓槽/箱  
 EL & ELV RM. = Electricity and Extra Low Voltage Room 電力及低電壓房

因住宅物業的較高樓層的結構牆的厚度遞減，較高樓層的內部面積，一般比較低樓層的內部面積稍大。

備註：樓面平面圖之尺規所列數字為以毫米標示之建築結構尺寸。

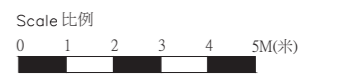
ELV = Extra Low Voltage Duct/Cabinet 低電壓槽/箱  
 FSI = Fire Service Inlet 消防入水掣  
 FLAT ROOF = 平台  
 GARDEN = 花園  
 HR = Hose Reel 消防喉轆  
 KIT = Kitchen 廚房  
 LAV = Lavatory 洗手間  
 LIFT = 升降機  
 LIFT LOBBY = 升降機大堂  
 LIGHT WELL = 光井  
 LIV = Living Room 客廳  
 MB = Master Bathroom 主人浴室  
 MBR = Master Bedroom 主人睡房  
 METAL CLADDING = 金屬裝飾板  
 OPEN KIT = Open Kitchen 開放式廚房  
 PD = Pipe Duct 管道槽  
 RS & MRR = Refuse Storage and Material Recovery Room 垃圾及物料回收室  
 ROOF = 天台  
 SPRINKLER CONTROL VALVE = 消防花酒控制閥  
 STO = Store 儲物房  
 U = Up 上  
 UP = Utility Platform 工作平台  
 UP ABOVE = Utility Platform Above 上層工作平台  
 UTILITY = Utility Room 工作間  
 VD = Ventilation Duct 通風槽  
 VOID = 中空  
 WMC = Water Meter Cabinet 水錶箱  
 WMR = Water Meter Room 水錶房

# Floor plans of residential properties in the phase of the development

## 發展項目期數的住宅物業的樓面平面圖

Tower 2  
第2座

G/F  
地下



## Floor plans of residential properties in the phase of the development

### 發展項目期數的住宅物業的樓面平面圖

**Tower 2**      **1/F**  
**第2座**      **1樓**

Description 描述	Flat 單位												
	A1	A2	A3	A5	A6	A7	C1	C2	C3	C5	C6	C7	C8
Floor-to-floor height (refers to the height between the top surface of the structural slab of a floor and the top surface of the structural slab of its immediate upper floor) of each residential property (m) 每個住宅物業的層與層之間的高度(指該樓層之石屎地台面與上一層石屎地台面之高度距離)(米)	3.00												
Thickness of the floor slabs (excluding plaster) of each residential property (mm) 每個住宅物業的樓板(不包括灰泥)厚度(毫米)	150 175	150 200	150 175 200	150 200	150	150 175 200	150 200		175	150 200	150		

The internal areas of the residential properties on the upper floors will generally be slightly larger than those on the lower floors because of the reducing thickness of the structural walls on the upper floors.

Remark : The dimensions in the floor plans are all structural dimensions in millimetre.

#### Legend 圖例

A/C PLATFORM = Air-conditioner Platform 空調機平台  
A/C PLATFORM ABOVE = Air-conditioner Platform Above 上層空調機平台  
A/C Plinth = Air-conditioner Plinth 空調機底座  
A/C GRILLE = Air-conditioner Grille 空調機格柵  
AC = Aluminum Cladding 鋁質裝飾板  
AD = Air Duct 通風槽  
AF = Architectural Feature 建築裝飾  
AF ABOVE = Architectural Feature Above 上層建築裝飾  
AF AT 1/F = Architectural Feature at 1/F 建築裝飾設於1樓  
AF BELOW = Architectural Feature Below 下層建築裝飾  
B = Bathroom 浴室  
BAL = Balcony 露台  
BAL ABOVE = Balcony Above 上層露台  
BL ABOVE = Building Line Above 上層建築物邊線  
BR = Bedroom 睡房  
CAB = Cabinet 櫃  
CANOPY = 簷篷  
CANOPY ABOVE = Canopy Above 上層簷篷  
COMMON FLAT ROOF = 公用平台  
D = Down 下  
DIN = Dining Room 飯廳  
DOG HOUSE = Mechanical and Electrical Services Duct Connecting to the Floor Below  
連接下層的機電設施管道  
EL = Electricity Duct 電線槽  
EL & ELV = Electricity Duct and Extra Low Voltage Duct/Cabinet  
電線槽及低電壓槽/箱  
EL & ELV RM. = Electricity and Extra Low Voltage Room 電力及低電壓房

因住宅物業的較高樓層的結構牆的厚度遞減，較高樓層的內部面積，一般比較低樓層的內部面積稍大。

備註：樓面平面圖之尺規所列數字為以毫米標示之建築結構尺寸。

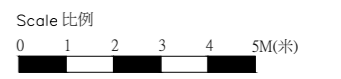
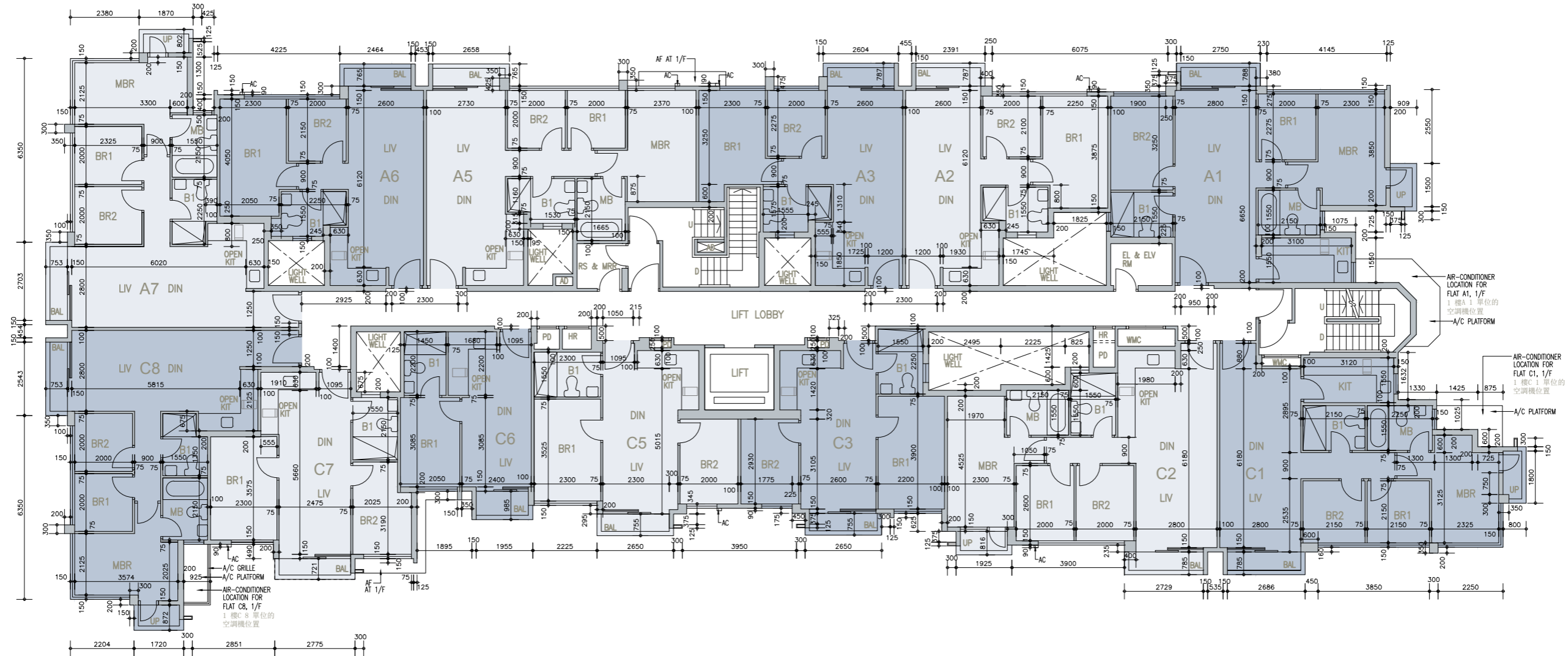
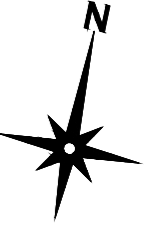
ELV = Extra Low Voltage Duct/Cabinet 低電壓槽/箱  
FSI = Fire Service Inlet 消防入水掣  
FLAT ROOF = 平台  
GARDEN = 花園  
HR = Hose Reel 消防喉轆  
KIT = Kitchen 廚房  
LAV = Lavatory 洗手間  
LIFT = 升降機  
LIFT LOBBY = 升降機大堂  
LIGHT WELL = 光井  
LIV = Living Room 客廳  
MB = Master Bathroom 主人浴室  
MBR = Master Bedroom 主人睡房  
METAL CLADDING = 金屬裝飾板  
OPEN KIT = Open Kitchen 開放式廚房  
PD = Pipe Duct 管道槽  
RS & MRR = Refuse Storage and Material Recovery Room 垃圾及物料回收室  
ROOF = 天台  
SPRINKLER CONTROL VALVE = 消防花灑控制閥  
STO = Store 儲物房  
U = Up 上  
UP = Utility Platform 工作平台  
UP ABOVE = Utility Platform Above 上層工作平台  
UTILITY = Utility Room 工作間  
VD = Ventilation Duct 通風槽  
VOID = 中空  
WMC = Water Meter Cabinet 水錶箱  
WMR = Water Meter Room 水錶房

# Floor plans of residential properties in the phase of the development

## 發展項目期數的住宅物業的樓面平面圖

Tower 2  
第2座

1/F  
1樓





## Floor plans of residential properties in the phase of the development

### 發展項目期數的住宅物業的樓面平面圖

**Tower 2**      **2/F**  
**第2座**      **2樓**

Description 描述	Flat 單位												
	A1	A2	A3	A5	A6	A7	C1	C2	C3	C5	C6	C7	C8
Floor-to-floor height (refers to the height between the top surface of the structural slab of a floor and the top surface of the structural slab of its immediate upper floor) of each residential property (m) 每個住宅物業的層與層之間的高度(指該樓層之石屎地台面與上一層石屎地台面之高度距離)(米)	3.00												
Thickness of the floor slabs (excluding plaster) of each residential property (mm) 每個住宅物業的樓板(不包括灰泥)厚度(毫米)	150 175	150 200	150 175 200	150 200	150	150 175 200	150 200		175	150 200	150		

The internal areas of the residential properties on the upper floors will generally be slightly larger than those on the lower floors because of the reducing thickness of the structural walls on the upper floors.

Remark : The dimensions in the floor plans are all structural dimensions in millimetre.

#### Legend 圖例

A/C PLATFORM = Air-conditioner Platform 空調機平台  
A/C PLATFORM ABOVE = Air-conditioner Platform Above 上層空調機平台  
A/C Plinth = Air-conditioner Plinth 空調機底座  
A/C GRILLE = Air-conditioner Grille 空調機格柵  
AC = Aluminum Cladding 鋁質裝飾板  
AD = Air Duct 通風槽  
AF = Architectural Feature 建築裝飾  
AF ABOVE = Architectural Feature Above 上層建築裝飾  
AF AT 1/F = Architectural Feature at 1/F 建築裝飾設於1樓  
AF BELOW = Architectural Feature Below 下層建築裝飾  
B = Bathroom 浴室  
BAL = Balcony 露台  
BAL ABOVE = Balcony Above 上層露台  
BL ABOVE = Building Line Above 上層建築物邊線  
BR = Bedroom 睡房  
CAB = Cabinet 櫃  
CANOPY = 簷篷  
CANOPY ABOVE = Canopy Above 上層簷篷  
COMMON FLAT ROOF = 公用平台  
D = Down 下  
DIN = Dining Room 飯廳  
DOG HOUSE = Mechanical and Electrical Services Duct Connecting to the Floor Below  
連接下層的機電設施管道  
EL = Electricity Duct 電線槽  
EL & ELV = Electricity Duct and Extra Low Voltage Duct/Cabinet  
電線槽及低電壓槽/箱  
EL & ELV RM. = Electricity and Extra Low Voltage Room 電力及低電壓房

因住宅物業的較高樓層的結構牆的厚度遞減，較高樓層的內部面積，一般比較低樓層的內部面積稍大。

備註：樓面平面圖之尺規所列數字為以毫米標示之建築結構尺寸。

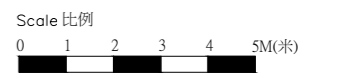
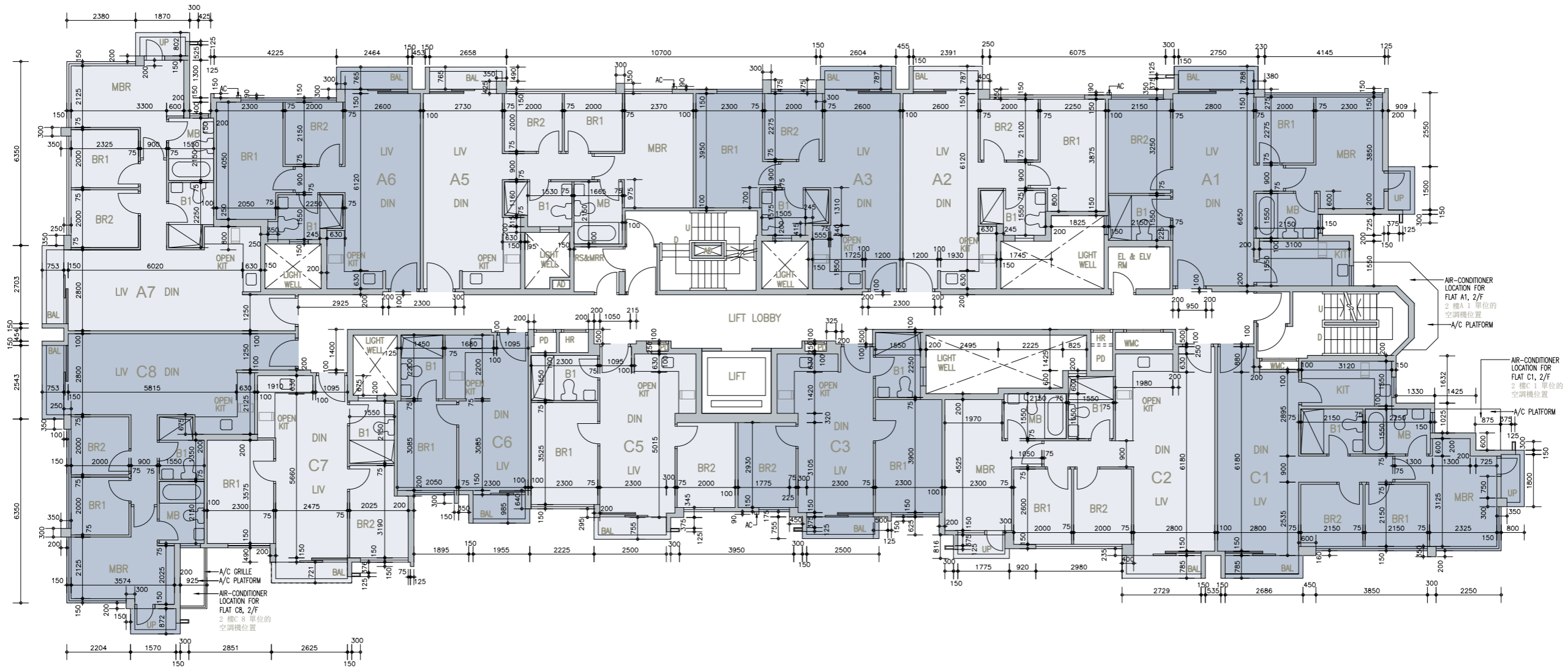
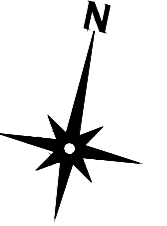
ELV = Extra Low Voltage Duct/Cabinet 低電壓槽/箱  
FSI = Fire Service Inlet 消防入水掣  
FLAT ROOF = 平台  
GARDEN = 花園  
HR = Hose Reel 消防喉轆  
KIT = Kitchen 廚房  
LAV = Lavatory 洗手間  
LIFT = 升降機  
LIFT LOBBY = 升降機大堂  
LIGHT WELL = 光井  
LIV = Living Room 客廳  
MB = Master Bathroom 主人浴室  
MBR = Master Bedroom 主人睡房  
METAL CLADDING = 金屬裝飾板  
OPEN KIT = Open Kitchen 開放式廚房  
PD = Pipe Duct 管道槽  
RS & MRR = Refuse Storage and Material Recovery Room 垃圾及物料回收室  
ROOF = 天台  
SPRINKLER CONTROL VALVE = 消防花酒控制閥  
STO = Store 儲物房  
U = Up 上  
UP = Utility Platform 工作平台  
UP ABOVE = Utility Platform Above 上層工作平台  
UTILITY = Utility Room 工作間  
VD = Ventilation Duct 通風槽  
VOID = 中空  
WMC = Water Meter Cabinet 水錶箱  
WMR = Water Meter Room 水錶房

# Floor plans of residential properties in the phase of the development

## 發展項目期數的住宅物業的樓面平面圖

Tower 2  
第2座

2/F  
2樓



## Floor plans of residential properties in the phase of the development

### 發展項目期數的住宅物業的樓面平面圖

**Tower 2**      **3/F**  
**第2座**      **3樓**

Description 描述	Flat 單位												
	A1	A2	A3	A5	A6	A7	C1	C2	C3	C5	C6	C7	C8
Floor-to-floor height (refers to the height between the top surface of the structural slab of a floor and the top surface of the structural slab of its immediate upper floor) of each residential property (m) 每個住宅物業的層與層之間的高度(指該樓層之石屎地台面與上一層石屎地台面之高度距離)(米)			3.00 3.30 3.35			3.00 3.25 3.35			3.00 3.30 3.35			3.00 3.25 3.35	
Thickness of the floor slabs (excluding plaster) of each residential property (mm) 每個住宅物業的樓板(不包括灰泥)厚度(毫米)	175												

The internal areas of the residential properties on the upper floors will generally be slightly larger than those on the lower floors because of the reducing thickness of the structural walls on the upper floors.

Remark : The dimensions in the floor plans are all structural dimensions in millimetre.

#### Legend 圖例

A/C PLATFORM = Air-conditioner Platform 空調機平台  
A/C PLATFORM ABOVE = Air-conditioner Platform Above 上層空調機平台  
A/C Plinth = Air-conditioner Plinth 空調機底座  
A/C GRILLE = Air-conditioner Grille 空調機格柵  
AC = Aluminum Cladding 鋁質裝飾板  
AD = Air Duct 通風槽  
AF = Architectural Feature 建築裝飾  
AF ABOVE = Architectural Feature Above 上層建築裝飾  
AF AT 1/F = Architectural Feature at 1/F 建築裝飾設於1樓  
AF BELOW = Architectural Feature Below 下層建築裝飾  
B = Bathroom 浴室  
BAL = Balcony 露台  
BAL ABOVE = Balcony Above 上層露台  
BL ABOVE = Building Line Above 上層建築物邊線  
BR = Bedroom 睡房  
CAB = Cabinet 櫃  
CANOPY = 簷篷  
CANOPY ABOVE = Canopy Above 上層簷篷  
COMMON FLAT ROOF = 公用平台  
D = Down 下  
DIN = Dining Room 飯廳  
DOG HOUSE = Mechanical and Electrical Services Duct Connecting to the Floor Below  
連接下層的機電設施管道  
EL = Electricity Duct 電線槽  
EL & ELV = Electricity Duct and Extra Low Voltage Duct/Cabinet  
電線槽及低電壓槽/箱  
EL & ELV RM. = Electricity and Extra Low Voltage Room 電力及低電壓房

因住宅物業的較高樓層的結構牆的厚度遞減，較高樓層的內部面積，一般比較低樓層的內部面積稍大。

備註：樓面平面圖之尺規所列數字為以毫米標示之建築結構尺寸。

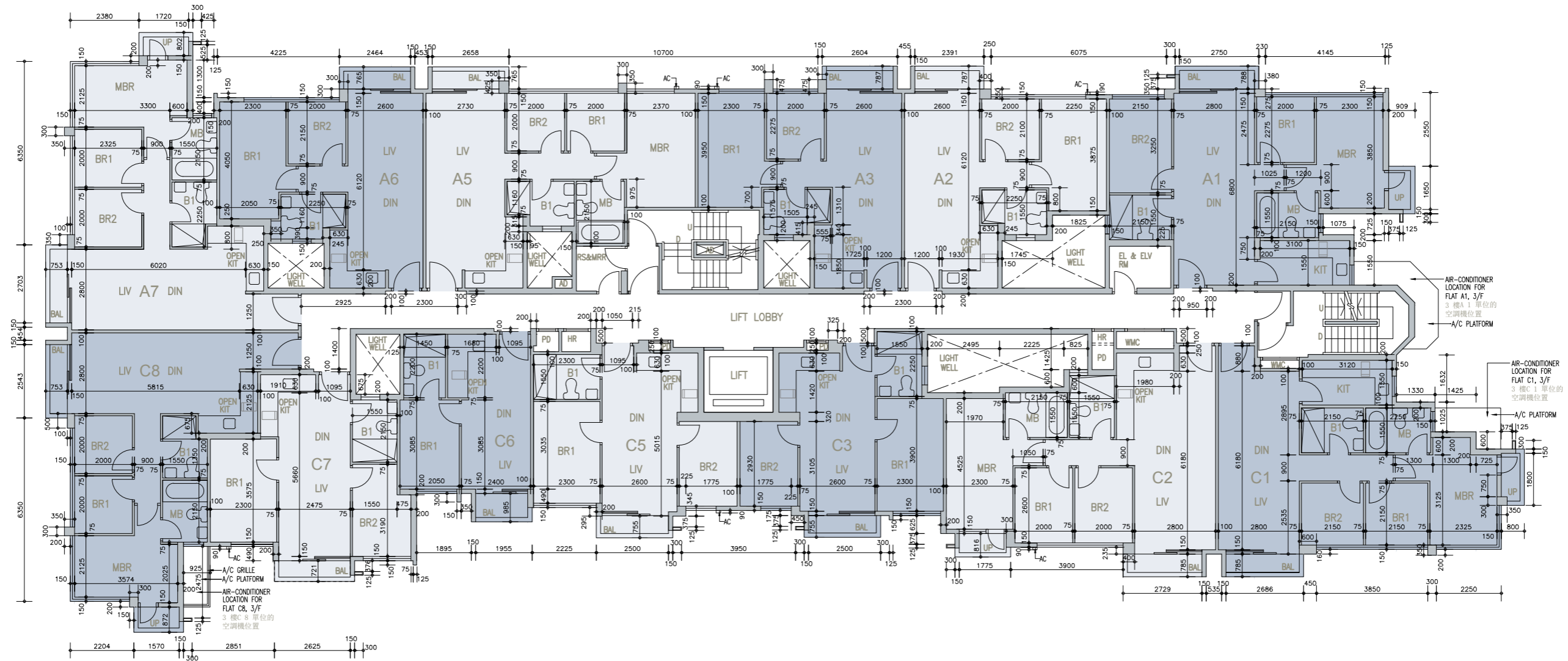
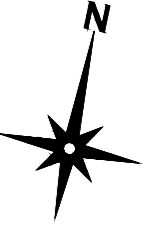
ELV = Extra Low Voltage Duct/Cabinet 低電壓槽/箱  
FSI = Fire Service Inlet 消防入水掣  
FLAT ROOF = 平台  
GARDEN = 花園  
HR = Hose Reel 消防喉轆  
KIT = Kitchen 廚房  
LAV = Lavatory 洗手間  
LIFT = 升降機  
LIFT LOBBY = 升降機大堂  
LIGHT WELL = 光井  
LIV = Living Room 客廳  
MB = Master Bathroom 主人浴室  
MBR = Master Bedroom 主人睡房  
METAL CLADDING = 金屬裝飾板  
OPEN KIT = Open Kitchen 開放式廚房  
PD = Pipe Duct 管道槽  
RS & MRR = Refuse Storage and Material Recovery Room 垃圾及物料回收室  
ROOF = 天台  
SPRINKLER CONTROL VALVE = 消防花灑控制閥  
STO = Store 儲物房  
U = Up 上  
UP = Utility Platform 工作平台  
UP ABOVE = Utility Platform Above 上層工作平台  
UTILITY = Utility Room 工作間  
VD = Ventilation Duct 通風槽  
VOID = 中空  
WMC = Water Meter Cabinet 水錶箱  
WMR = Water Meter Room 水錶房

# Floor plans of residential properties in the phase of the development

## 發展項目期數的住宅物業的樓面平面圖

Tower 2  
第2座

3/F  
3樓



# Floor plans of residential properties in the phase of the development

## 發展項目期數的住宅物業的樓面平面圖

Tower 2  
第2座

Roof  
天台

The internal areas of the residential properties on the upper floors will generally be slightly larger than those on the lower floors because of the reducing thickness of the structural walls on the upper floors.

Remark : The dimensions in the floor plans are all structural dimensions in millimetre.

### Legend 圖例

A/C PLATFORM = Air-conditioner Platform 空調機平台

A/C PLATFORM ABOVE = Air-conditioner Platform Above 上層空調機平台

A/C Plinth = Air-conditioner Plinth 空調機底座

A/C GRILLE = Air-conditioner Grille 空調機格柵

AC = Aluminum Cladding 鋁質裝飾板

AD = Air Duct 通風槽

AF = Architectural Feature 建築裝飾

AF ABOVE = Architectural Feature Above 上層建築裝飾

AF AT 1/F = Architectural Feature at 1/F 建築裝飾設於1樓

AF BELOW = Architectural Feature Below 下層建築裝飾

B = Bathroom 浴室

BAL = Balcony 露台

BAL ABOVE = Balcony Above 上層露台

BL ABOVE = Building Line Above 上層建築物邊線

BR = Bedroom 睡房

CAB = Cabinet 櫃

CANOPY = 簷篷

CANOPY ABOVE = Canopy Above 上層簷篷

COMMON FLAT ROOF = 公用平台

D = Down 下

DIN = Dining Room 飯廳

DOG HOUSE = Mechanical and Electrical Services Duct Connecting to the Floor Below  
連接下層的機電設施管道

EL = Electricity Duct 電線槽

EL & ELV = Electricity Duct and Extra Low Voltage Duct/Cabinet  
電線槽及低電壓槽/箱

EL & ELV RM. = Electricity and Extra Low Voltage Room 電力及低電壓房

因住宅物業的較高樓層的結構牆的厚度遞減，較高樓層的內部面積，一般比較低樓層的內部面積稍大。

備註：樓面平面圖之尺規所列數字為以毫米標示之建築結構尺寸。

ELV = Extra Low Voltage Duct/Cabinet 低電壓槽/箱

FSI = Fire Service Inlet 消防入水掣

FLAT ROOF = 平台

GARDEN = 花園

HR = Hose Reel 消防喉轆

KIT = Kitchen 廚房

LAV = Lavatory 洗手間

LIFT = 升降機

LIFT LOBBY = 升降機大堂

LIGHT WELL = 光井

LIV = Living Room 客廳

MB = Master Bathroom 主人浴室

MBR = Master Bedroom 主人睡房

METAL CLADDING = 金屬裝飾板

OPEN KIT = Open Kitchen 開放式廚房

PD = Pipe Duct 管道槽

RS & MRR = Refuse Storage and Material Recovery Room 垃圾及物料回收室

ROOF = 天台

SPRINKLER CONTROL VALVE = 消防花酒控制閥

STO = Store 儲物房

U = Up 上

UP = Utility Platform 工作平台

UP ABOVE = Utility Platform Above 上層工作平台

UTILITY = Utility Room 工作間

VD = Ventilation Duct 通風槽

VOID = 中空

WMC = Water Meter Cabinet 水錶箱

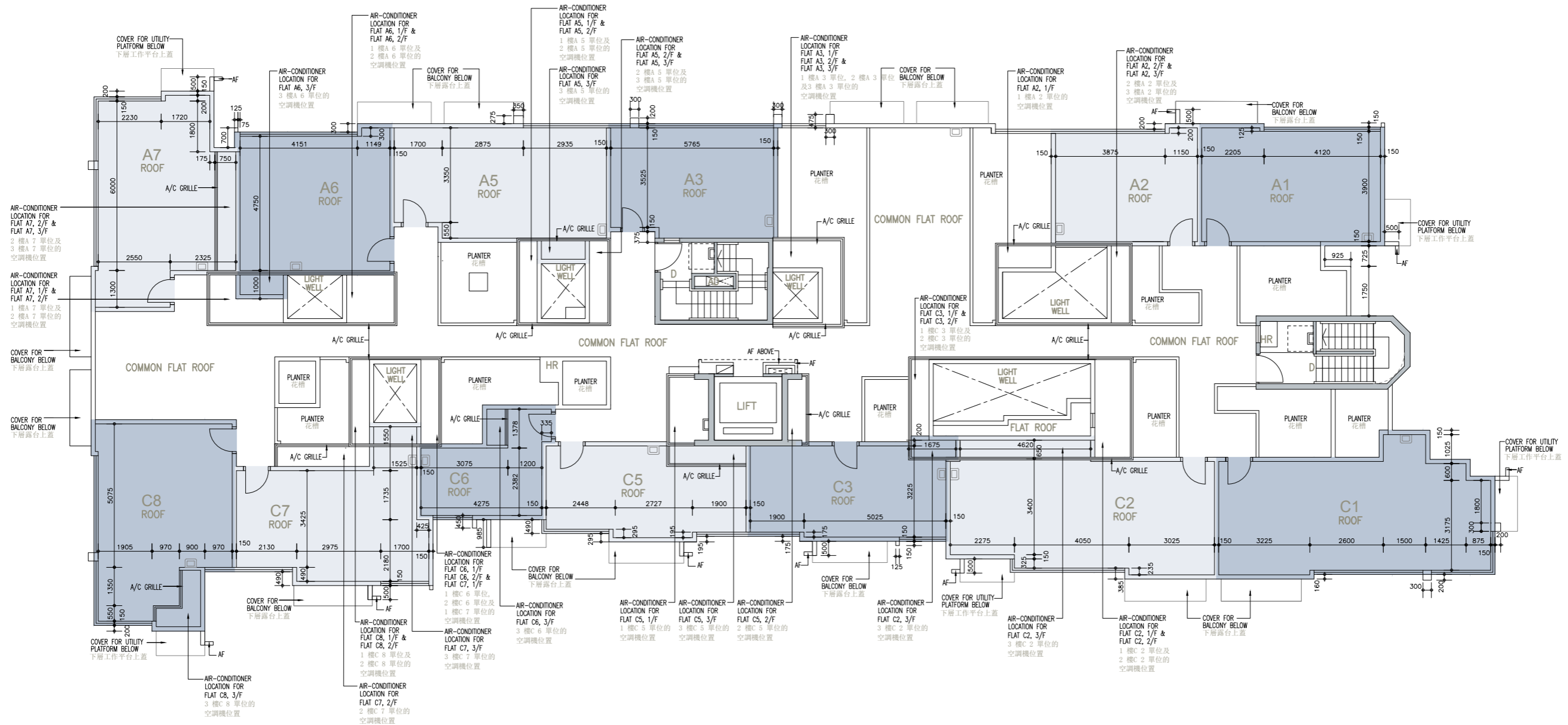
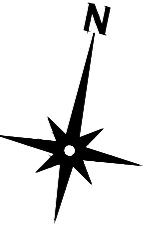
WMR = Water Meter Room 水錶房

# Floor plans of residential properties in the phase of the development

## 發展項目期數的住宅物業的樓面平面圖

Tower 2  
第2座

Roof  
天台



## Floor plans of residential properties in the phase of the development

### 發展項目期數的住宅物業的樓面平面圖

#### HOUSE 1 洋房 1

Floor 樓層	Floor-to-floor height (refers to the height between the top surface of the structural slab of a floor and the top surface of the structural slab of its immediate upper floor) (m) 層與層之間的高度 (指該樓層之石屎地台面與上一層石屎地台面之高度距離) (米)	Thickness of the floor slabs (excluding plaster) (mm) 樓板 (不包括灰泥) 厚度 (毫米)
G/F 地下	3.45	150
	3.60	
	3.80	
	3.825	
	3.95	
	4.125	
1/F 1樓	4.175	175
	3.50	
	3.85	
Roof (Stairhood) 天台 (梯屋)	2.50	200

The internal areas of the residential properties on the upper floors will generally be slightly larger than those on the lower floors because of the reducing thickness of the structural walls on the upper floors.

Remark : The dimensions in the floor plans are all structural dimensions in millimetre.

#### Legend 圖例

A/C PLATFORM = Air-conditioner Platform 空調機平台

A/C PLATFORM ABOVE = Air-conditioner Platform Above 上層空調機平台

A/C Plinth = Air-conditioner Plinth 空調機底座

A/C GRILLE = Air-conditioner Grille 空調機格柵

AC = Aluminum Cladding 鋁質裝飾板

AD = Air Duct 通風槽

AF = Architectural Feature 建築裝飾

AF ABOVE = Architectural Feature Above 上層建築裝飾

AF AT 1/F = Architectural Feature at 1/F 建築裝飾設於1樓

AF BELOW = Architectural Feature Below 下層建築裝飾

B = Bathroom 浴室

BAL = Balcony 露台

BAL ABOVE = Balcony Above 上層露台

BL ABOVE = Building Line Above 上層建築物邊線

BR = Bedroom 睡房

CAB = Cabinet 櫃

CANOPY = 簷篷

CANOPY ABOVE = Canopy Above 上層簷篷

COMMON FLAT ROOF = 公用平台

D = Down 下

DIN = Dining Room 飯廳

DOG HOUSE = Mechanical and Electrical Services Duct Connecting to the Floor Below  
連接下層的機電設施管道

EL = Electricity Duct 電線槽

EL & ELV = Electricity Duct and Extra Low Voltage Duct/Cabinet  
電線槽及低電壓槽/箱

EL & ELV RM. = Electricity and Extra Low Voltage Room 電力及低電壓房

因住宅物業的較高樓層的結構牆的厚度遞減，較高樓層的內部面積，一般比較低樓層的內部面積稍大。

備註：樓面平面圖之尺規所列數字為以毫米標示之建築結構尺寸。

ELV = Extra Low Voltage Duct/Cabinet 低電壓槽/箱

FSI = Fire Service Inlet 消防入水掣

FLAT ROOF = 平台

GARDEN = 花園

HR = Hose Reel 消防喉轆

KIT = Kitchen 廚房

LAV = Lavatory 洗手間

LIFT = 升降機

LIFT LOBBY = 升降機大堂

LIGHT WELL = 光井

LIV = Living Room 客廳

MB = Master Bathroom 主人浴室

MBR = Master Bedroom 主人睡房

METAL CLADDING = 金屬裝飾板

OPEN KIT = Open Kitchen 開放式廚房

PD = Pipe Duct 管道槽

RS & MRR = Refuse Storage and Material Recovery Room 垃圾及物料回收室

ROOF = 天台

SPRINKLER CONTROL VALVE = 消防花酒控制閥

STO = Store 儲物房

U = Up 上

UP = Utility Platform 工作平台

UP ABOVE = Utility Platform Above 上層工作平台

UTILITY = Utility Room 工作間

VD = Ventilation Duct 通風槽

VOID = 中空

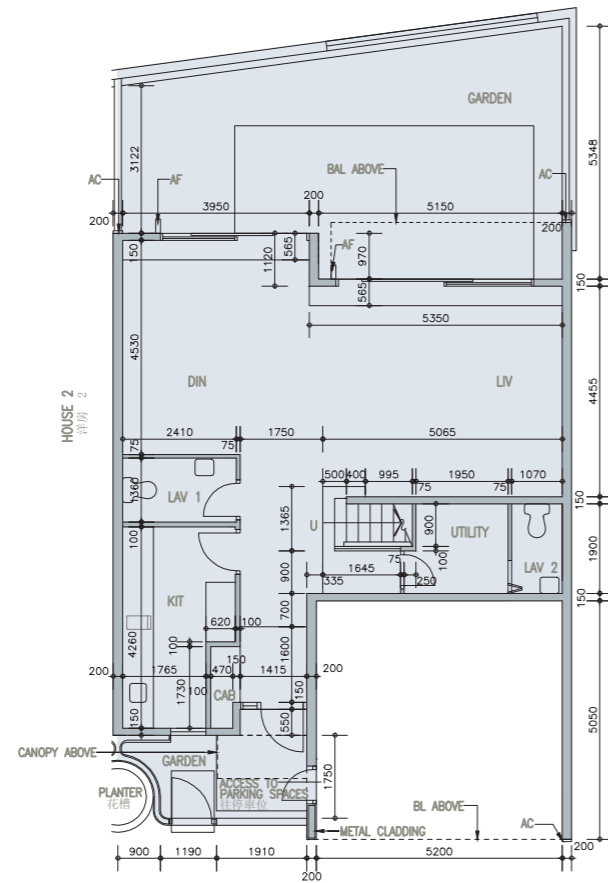
WMC = Water Meter Cabinet 水錶箱

WMR = Water Meter Room 水錶房

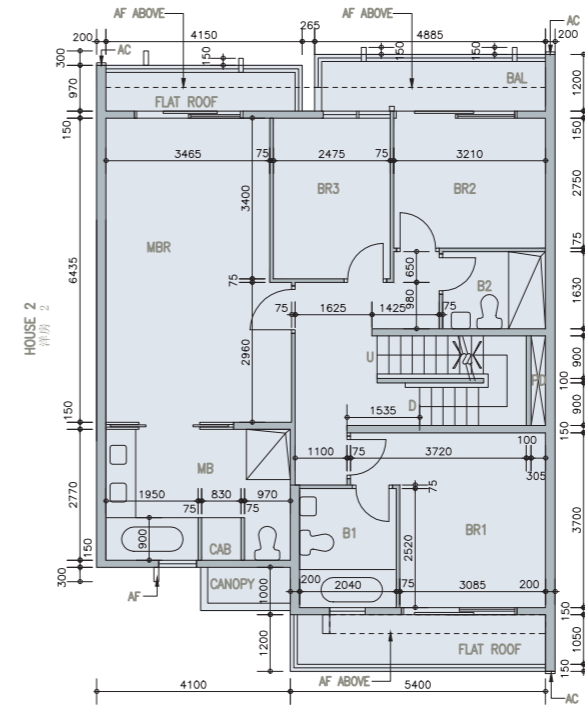
# Floor plans of residential properties in the phase of the development

## 發展項目期數的住宅物業的樓面平面圖

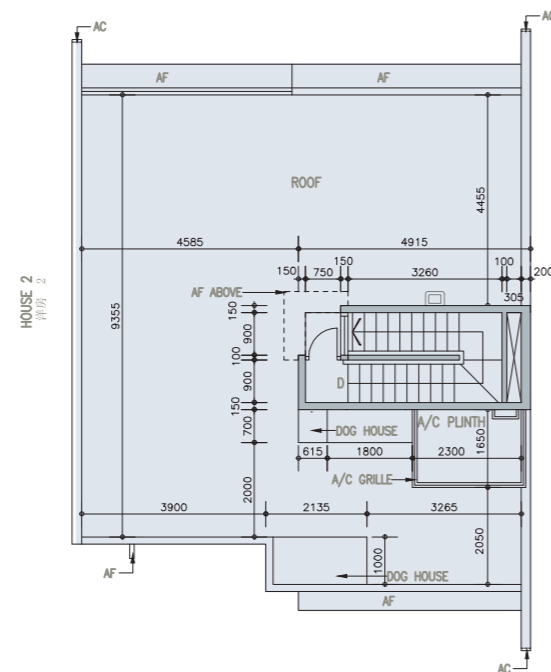
HOUSE 1  
洋房1



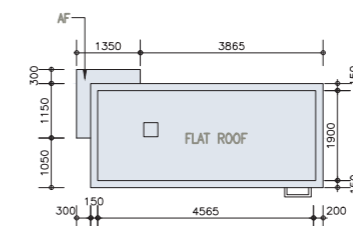
G/F  
地下



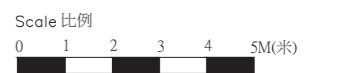
1/F  
1樓



ROOF  
天台



UPPER ROOF  
上層天台





## Floor plans of residential properties in the phase of the development

### 發展項目期數的住宅物業的樓面平面圖

#### HOUSE 2 洋房 2

Floor 樓層	Floor-to-floor height (refers to the height between the top surface of the structural slab of a floor and the top surface of the structural slab of its immediate upper floor) (m) 層與層之間的高度 (指該樓層之石屎地台面與上一層石屎地台面之高度距離) (米)	Thickness of the floor slabs (excluding plaster) (mm) 樓板 (不包括灰泥) 厚度 (毫米)
G/F 地下	3.45	150
	3.60	
	3.80	
	3.825	
	3.95	
	4.125	
1/F 1樓	4.175	175
	3.50	
	3.85	
Roof (Stairhood) 天台 (梯屋)	2.50	200

The internal areas of the residential properties on the upper floors will generally be slightly larger than those on the lower floors because of the reducing thickness of the structural walls on the upper floors.

Remark : The dimensions in the floor plans are all structural dimensions in millimetre.

#### Legend 圖例

A/C PLATFORM = Air-conditioner Platform 空調機平台

A/C PLATFORM ABOVE = Air-conditioner Platform Above 上層空調機平台

A/C Plinth = Air-conditioner Plinth 空調機底座

A/C GRILLE = Air-conditioner Grille 空調機格柵

AC = Aluminum Cladding 鋁質裝飾板

AD = Air Duct 通風槽

AF = Architectural Feature 建築裝飾

AF ABOVE = Architectural Feature Above 上層建築裝飾

AF AT 1/F = Architectural Feature at 1/F 建築裝飾設於1樓

AF BELOW = Architectural Feature Below 下層建築裝飾

B = Bathroom 浴室

BAL = Balcony 露台

BAL ABOVE = Balcony Above 上層露台

BL ABOVE = Building Line Above 上層建築物邊線

BR = Bedroom 睡房

CAB = Cabinet 櫃

CANOPY = 簷篷

CANOPY ABOVE = Canopy Above 上層簷篷

COMMON FLAT ROOF = 公用平台

D = Down 下

DIN = Dining Room 飯廳

DOG HOUSE = Mechanical and Electrical Services Duct Connecting to the Floor Below  
連接下層的機電設施管道

EL = Electricity Duct 電線槽

EL & ELV = Electricity Duct and Extra Low Voltage Duct/Cabinet  
電線槽及低電壓槽/箱

EL & ELV RM. = Electricity and Extra Low Voltage Room 電力及低電壓房

因住宅物業的較高樓層的結構牆的厚度遞減，較高樓層的內部面積，一般比較低樓層的內部面積稍大。

備註：樓面平面圖之尺規所列數字為以毫米標示之建築結構尺寸。

ELV = Extra Low Voltage Duct/Cabinet 低電壓槽/箱

FSI = Fire Service Inlet 消防入水掣

FLAT ROOF = 平台

GARDEN = 花園

HR = Hose Reel 消防喉轆

KIT = Kitchen 廚房

LAV = Lavatory 洗手間

LIFT = 升降機

LIFT LOBBY = 升降機大堂

LIGHT WELL = 光井

LIV = Living Room 客廳

MB = Master Bathroom 主人浴室

MBR = Master Bedroom 主人睡房

METAL CLADDING = 金屬裝飾板

OPEN KIT = Open Kitchen 開放式廚房

PD = Pipe Duct 管道槽

RS & MRR = Refuse Storage and Material Recovery Room 垃圾及物料回收室

ROOF = 天台

SPRINKLER CONTROL VALVE = 消防花酒控制閥

STO = Store 儲物房

U = Up 上

UP = Utility Platform 工作平台

UP ABOVE = Utility Platform Above 上層工作平台

UTILITY = Utility Room 工作間

VD = Ventilation Duct 通風槽

VOID = 中空

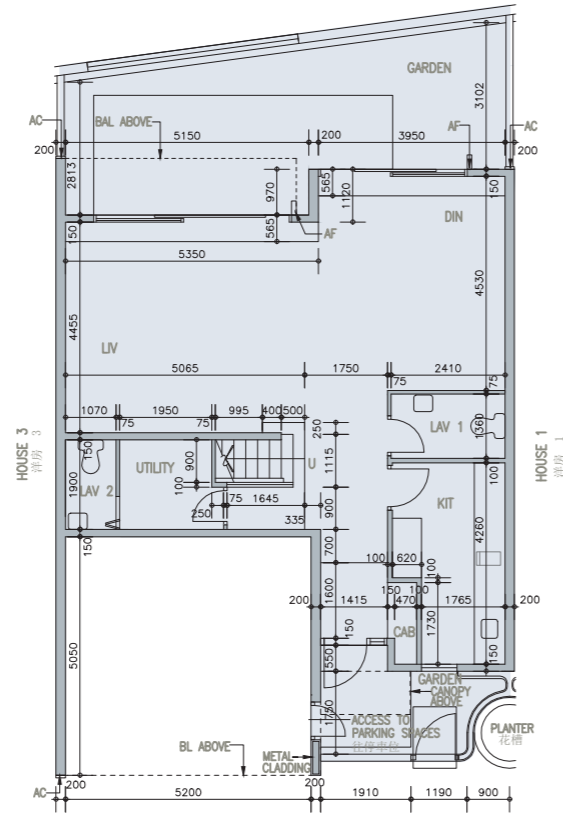
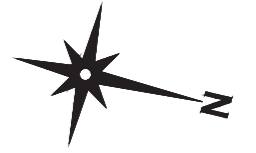
WMC = Water Meter Cabinet 水錶箱

WMR = Water Meter Room 水錶房

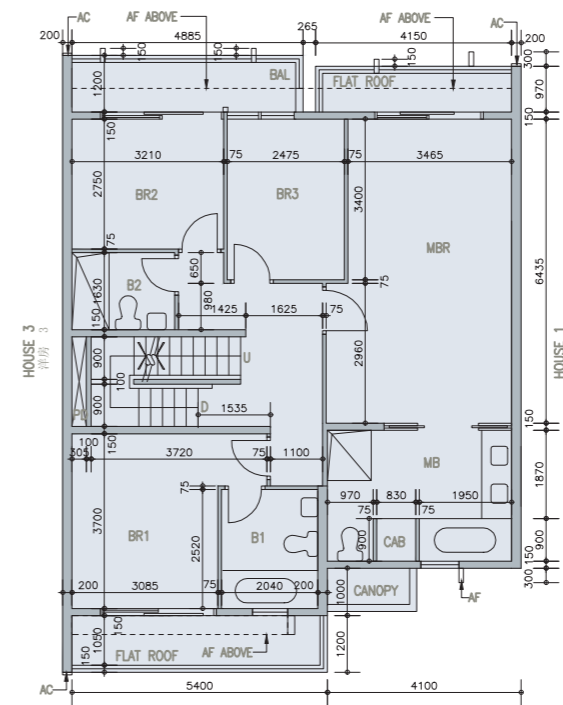
# Floor plans of residential properties in the phase of the development

## 發展項目期數的住宅物業的樓面平面圖

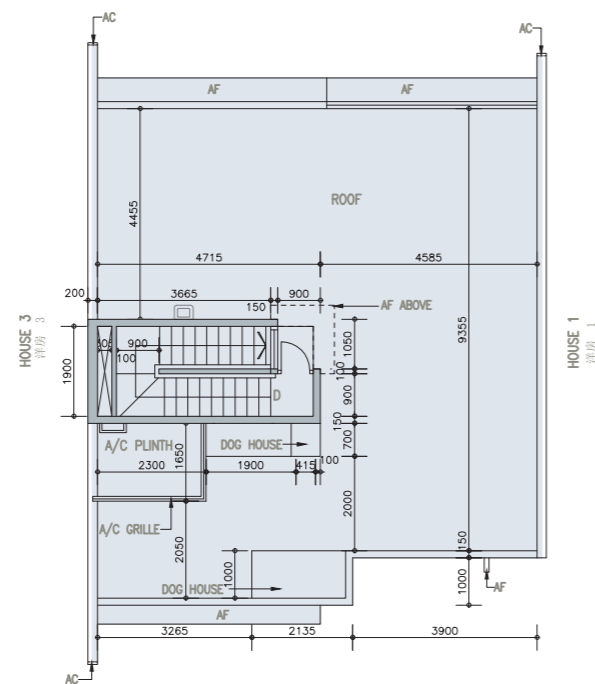
HOUSE 2  
洋房 2



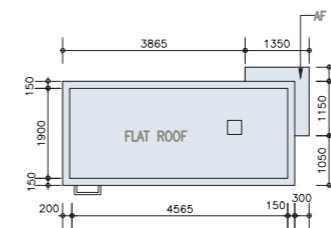
G/F  
地下



1/F  
1樓



ROOF  
天台



UPPER ROOF  
上層天台



## Floor plans of residential properties in the phase of the development

### 發展項目期數的住宅物業的樓面平面圖

#### HOUSE 3 洋房 3

Floor 樓層	Floor-to-floor height (refers to the height between the top surface of the structural slab of a floor and the top surface of the structural slab of its immediate upper floor) (m) 層與層之間的高度 (指該樓層之石屎地台面與上一層石屎地台面之高度距離) (米)	Thickness of the floor slabs (excluding plaster) (mm) 樓板 (不包括灰泥) 厚度 (毫米)
G/F 地下	3.45	150
	3.60	
	3.80	
	3.825	
	3.95	
	4.125	
1/F 1樓	4.175	175
	3.50	
	3.85	
Roof (Stairhood) 天台 (梯屋)	2.50	200

The internal areas of the residential properties on the upper floors will generally be slightly larger than those on the lower floors because of the reducing thickness of the structural walls on the upper floors.

Remark : The dimensions in the floor plans are all structural dimensions in millimetre.

#### Legend 圖例

A/C PLATFORM = Air-conditioner Platform 空調機平台

A/C PLATFORM ABOVE = Air-conditioner Platform Above 上層空調機平台

A/C Plinth = Air-conditioner Plinth 空調機底座

A/C GRILLE = Air-conditioner Grille 空調機格柵

AC = Aluminum Cladding 鋁質裝飾板

AD = Air Duct 通風槽

AF = Architectural Feature 建築裝飾

AF ABOVE = Architectural Feature Above 上層建築裝飾

AF AT 1/F = Architectural Feature at 1/F 建築裝飾設於1樓

AF BELOW = Architectural Feature Below 下層建築裝飾

B = Bathroom 浴室

BAL = Balcony 露台

BAL ABOVE = Balcony Above 上層露台

BL ABOVE = Building Line Above 上層建築物邊線

BR = Bedroom 睡房

CAB = Cabinet 櫃

CANOPY = 簷篷

CANOPY ABOVE = Canopy Above 上層簷篷

COMMON FLAT ROOF = 公用平台

D = Down 下

DIN = Dining Room 飯廳

DOG HOUSE = Mechanical and Electrical Services Duct Connecting to the Floor Below  
連接下層的機電設施管道

EL = Electricity Duct 電線槽

EL & ELV = Electricity Duct and Extra Low Voltage Duct/Cabinet  
電線槽及低電壓槽/箱

EL & ELV RM. = Electricity and Extra Low Voltage Room 電力及低電壓房

因住宅物業的較高樓層的結構牆的厚度遞減，較高樓層的內部面積，一般比較低樓層的內部面積稍大。

備註：樓面平面圖之尺規所列數字為以毫米標示之建築結構尺寸。

ELV = Extra Low Voltage Duct/Cabinet 低電壓槽/箱

FSI = Fire Service Inlet 消防入水掣

FLAT ROOF = 平台

GARDEN = 花園

HR = Hose Reel 消防喉轆

KIT = Kitchen 廚房

LAV = Lavatory 洗手間

LIFT = 升降機

LIFT LOBBY = 升降機大堂

LIGHT WELL = 光井

LIV = Living Room 客廳

MB = Master Bathroom 主人浴室

MBR = Master Bedroom 主人睡房

METAL CLADDING = 金屬裝飾板

OPEN KIT = Open Kitchen 開放式廚房

PD = Pipe Duct 管道槽

RS & MRR = Refuse Storage and Material Recovery Room 垃圾及物料回收室

ROOF = 天台

SPRINKLER CONTROL VALVE = 消防花酒控制閥

STO = Store 儲物房

U = Up 上

UP = Utility Platform 工作平台

UP ABOVE = Utility Platform Above 上層工作平台

UTILITY = Utility Room 工作間

VD = Ventilation Duct 通風槽

VOID = 中空

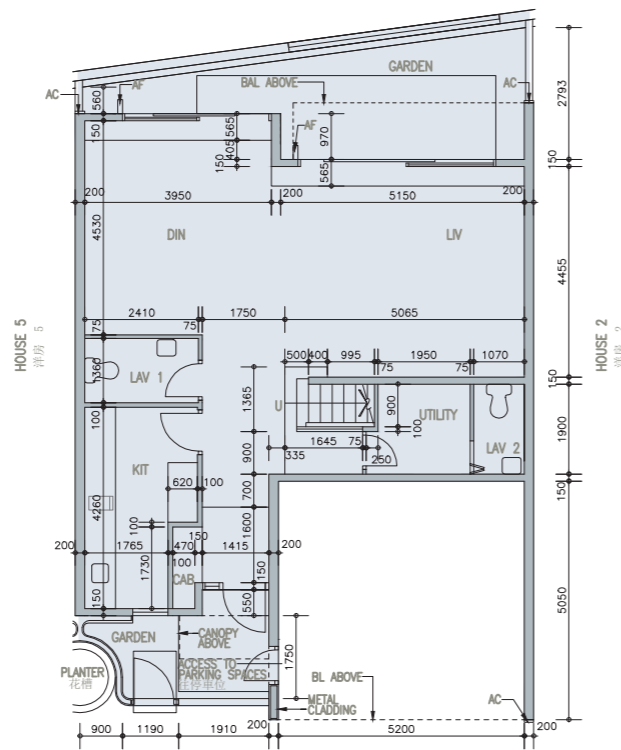
WMC = Water Meter Cabinet 水錶箱

WMR = Water Meter Room 水錶房

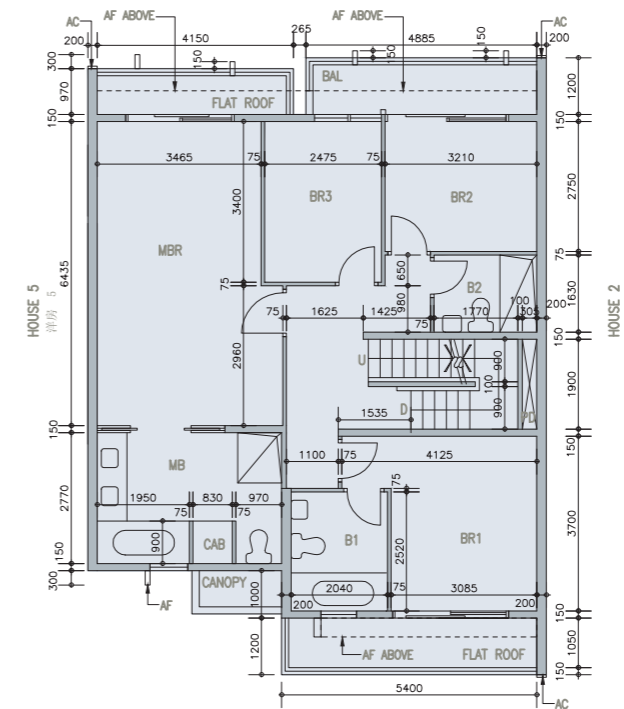
# Floor plans of residential properties in the phase of the development

## 發展項目期數的住宅物業的樓面平面圖

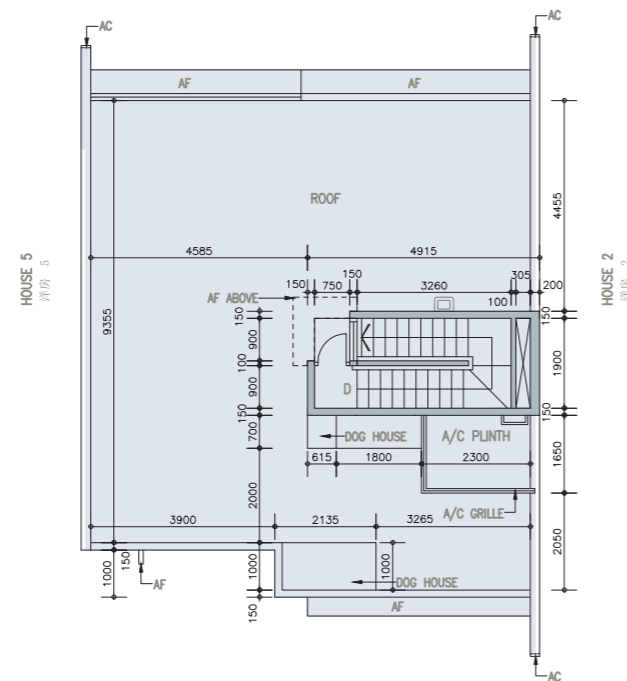
HOUSE 3  
洋房 3



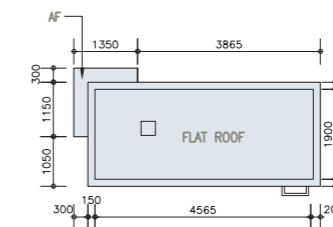
G/F  
地下



1/F  
1樓



ROOF  
天台



UPPER ROOF  
上層天台



## Floor plans of residential properties in the phase of the development

### 發展項目期數的住宅物業的樓面平面圖

#### HOUSE 5 洋房 5

Floor 樓層	Floor-to-floor height (refers to the height between the top surface of the structural slab of a floor and the top surface of the structural slab of its immediate upper floor) (m) 層與層之間的高度 (指該樓層之石屎地台面與上一層石屎地台面之高度距離) (米)	Thickness of the floor slabs (excluding plaster) (mm) 樓板 (不包括灰泥) 厚度 (毫米)
G/F 地下	3.45	150 225
	3.60	
	3.80	
	3.825	
	3.95	
	4.125 4.175	
1/F 1樓	3.50	150
	3.85	175
Roof (Stairhood) 天台 (梯屋)	2.50	150

The internal areas of the residential properties on the upper floors will generally be slightly larger than those on the lower floors because of the reducing thickness of the structural walls on the upper floors.

Remark : The dimensions in the floor plans are all structural dimensions in millimetre.

#### Legend 圖例

A/C PLATFORM = Air-conditioner Platform 空調機平台

A/C PLATFORM ABOVE = Air-conditioner Platform Above 上層空調機平台

A/C Plinth = Air-conditioner Plinth 空調機底座

A/C GRILLE = Air-conditioner Grille 空調機格柵

AC = Aluminum Cladding 鋁質裝飾板

AD = Air Duct 通風槽

AF = Architectural Feature 建築裝飾

AF ABOVE = Architectural Feature Above 上層建築裝飾

AF AT 1/F = Architectural Feature at 1/F 建築裝飾設於1樓

AF BELOW = Architectural Feature Below 下層建築裝飾

B = Bathroom 浴室

BAL = Balcony 露台

BAL ABOVE = Balcony Above 上層露台

BL ABOVE = Building Line Above 上層建築物邊線

BR = Bedroom 睡房

CAB = Cabinet 櫃

CANOPY = 簷篷

CANOPY ABOVE = Canopy Above 上層簷篷

COMMON FLAT ROOF = 公用平台

D = Down 下

DIN = Dining Room 飯廳

DOG HOUSE = Mechanical and Electrical Services Duct Connecting to the Floor Below  
連接下層的機電設施管道

EL = Electricity Duct 電線槽

EL & ELV = Electricity Duct and Extra Low Voltage Duct/Cabinet  
電線槽及低電壓槽/箱

EL & ELV RM. = Electricity and Extra Low Voltage Room 電力及低電壓房

因住宅物業的較高樓層的結構牆的厚度遞減，較高樓層的內部面積，一般比較低樓層的內部面積稍大。

備註：樓面平面圖之尺規所列數字為以毫米標示之建築結構尺寸。

ELV = Extra Low Voltage Duct/Cabinet 低電壓槽/箱

FSI = Fire Service Inlet 消防入水掣

FLAT ROOF = 平台

GARDEN = 花園

HR = Hose Reel 消防喉轆

KIT = Kitchen 廚房

LAV = Lavatory 洗手間

LIFT = 升降機

LIFT LOBBY = 升降機大堂

LIGHT WELL = 光井

LIV = Living Room 客廳

MB = Master Bathroom 主人浴室

MBR = Master Bedroom 主人睡房

METAL CLADDING = 金屬裝飾板

OPEN KIT = Open Kitchen 開放式廚房

PD = Pipe Duct 管道槽

RS & MRR = Refuse Storage and Material Recovery Room 垃圾及物料回收室

ROOF = 天台

SPRINKLER CONTROL VALVE = 消防花酒控制閥

STO = Store 儲物房

U = Up 上

UP = Utility Platform 工作平台

UP ABOVE = Utility Platform Above 上層工作平台

UTILITY = Utility Room 工作間

VD = Ventilation Duct 通風槽

VOID = 中空

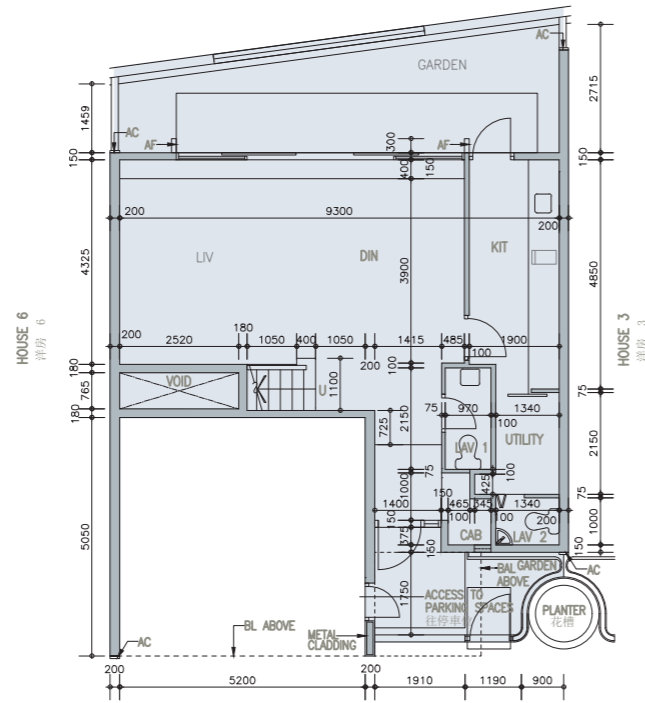
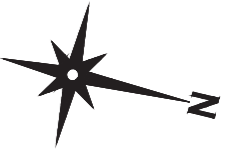
WMC = Water Meter Cabinet 水錶箱

WMR = Water Meter Room 水錶房

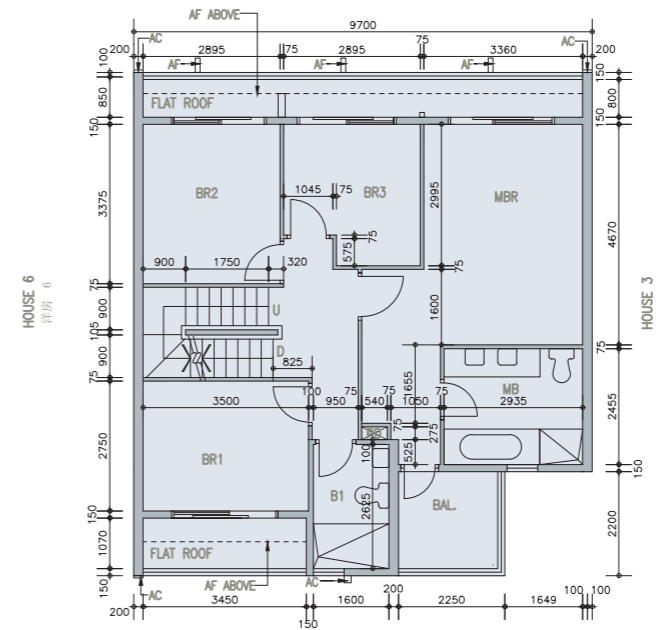
# Floor plans of residential properties in the phase of the development

## 發展項目期數的住宅物業的樓面平面圖

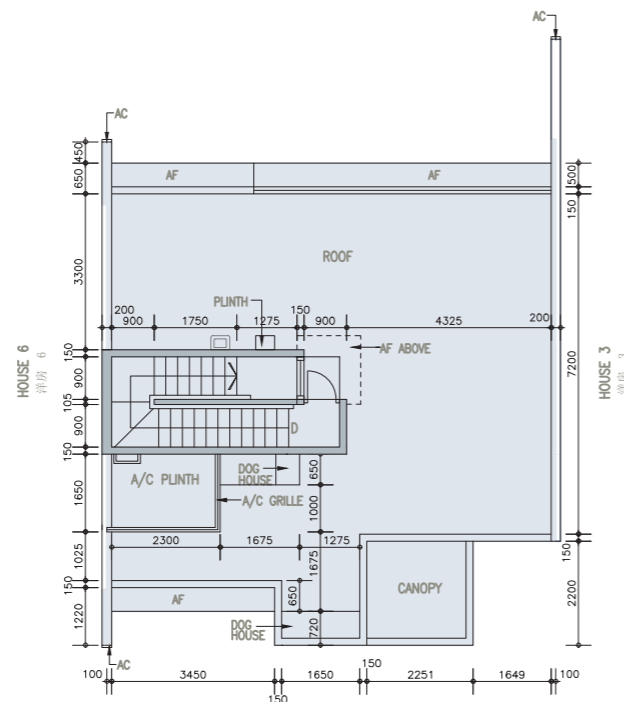
HOUSE 5  
洋房 5



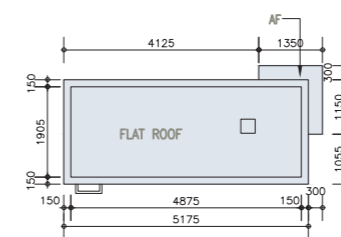
G/F  
地下



1/F  
1樓



ROOF  
天台



UPPER ROOF  
上層天台



## Floor plans of residential properties in the phase of the development

### 發展項目期數的住宅物業的樓面平面圖

#### HOUSE 6 洋房 6

Floor 樓層	Floor-to-floor height (refers to the height between the top surface of the structural slab of a floor and the top surface of the structural slab of its immediate upper floor) (m) 層與層之間的高度 (指該樓層之石屎地台面與上一層石屎地台面之高度距離) (米)	Thickness of the floor slabs (excluding plaster) (mm) 樓板 (不包括灰泥) 厚度 (毫米)
G/F 地下	3.45	150
	3.80	
	3.825	
	3.95	
	4.05	
1/F 1樓	4.175	175
	3.50	
	3.85	
200		
Roof (Stairhood) 天台 (梯屋)	2.50	150

The internal areas of the residential properties on the upper floors will generally be slightly larger than those on the lower floors because of the reducing thickness of the structural walls on the upper floors.

Remark : The dimensions in the floor plans are all structural dimensions in millimetre.

#### Legend 圖例

A/C PLATFORM = Air-conditioner Platform 空調機平台

A/C PLATFORM ABOVE = Air-conditioner Platform Above 上層空調機平台

A/C Plinth = Air-conditioner Plinth 空調機底座

A/C GRILLE = Air-conditioner Grille 空調機格柵

AC = Aluminum Cladding 鋁質裝飾板

AD = Air Duct 通風槽

AF = Architectural Feature 建築裝飾

AF ABOVE = Architectural Feature Above 上層建築裝飾

AF AT 1/F = Architectural Feature at 1/F 建築裝飾設於1樓

AF BELOW = Architectural Feature Below 下層建築裝飾

B = Bathroom 浴室

BAL = Balcony 露台

BAL ABOVE = Balcony Above 上層露台

BL ABOVE = Building Line Above 上層建築物邊線

BR = Bedroom 睡房

CAB = Cabinet 櫃

CANOPY = 簷篷

CANOPY ABOVE = Canopy Above 上層簷篷

COMMON FLAT ROOF = 公用平台

D = Down 下

DIN = Dining Room 飯廳

DOG HOUSE = Mechanical and Electrical Services Duct Connecting to the Floor Below  
連接下層的機電設施管道

EL = Electricity Duct 電線槽

EL & ELV = Electricity Duct and Extra Low Voltage Duct/Cabinet  
電線槽及低電壓槽/箱

EL & ELV RM. = Electricity and Extra Low Voltage Room 電力及低電壓房

因住宅物業的較高樓層的結構牆的厚度遞減，較高樓層的內部面積，一般比較低樓層的內部面積稍大。

備註：樓面平面圖之尺規所列數字為以毫米標示之建築結構尺寸。

ELV = Extra Low Voltage Duct/Cabinet 低電壓槽/箱

FSI = Fire Service Inlet 消防入水掣

FLAT ROOF = 平台

GARDEN = 花園

HR = Hose Reel 消防喉轆

KIT = Kitchen 廚房

LAV = Lavatory 洗手間

LIFT = 升降機

LIFT LOBBY = 升降機大堂

LIGHT WELL = 光井

LIV = Living Room 客廳

MB = Master Bathroom 主人浴室

MBR = Master Bedroom 主人睡房

METAL CLADDING = 金屬裝飾板

OPEN KIT = Open Kitchen 開放式廚房

PD = Pipe Duct 管道槽

RS & MRR = Refuse Storage and Material Recovery Room 垃圾及物料回收室

ROOF = 天台

SPRINKLER CONTROL VALVE = 消防花酒控制閥

STO = Store 儲物房

U = Up 上

UP = Utility Platform 工作平台

UP ABOVE = Utility Platform Above 上層工作平台

UTILITY = Utility Room 工作間

VD = Ventilation Duct 通風槽

VOID = 中空

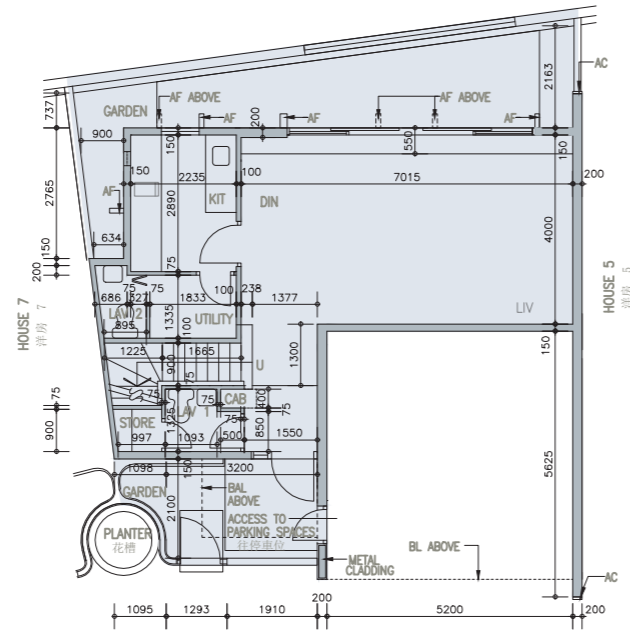
WMC = Water Meter Cabinet 水錶箱

WMR = Water Meter Room 水錶房

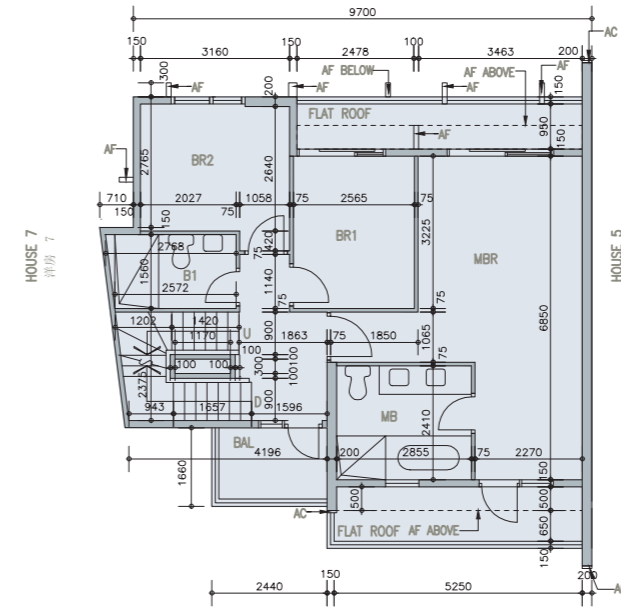
# Floor plans of residential properties in the phase of the development

## 發展項目期數的住宅物業的樓面平面圖

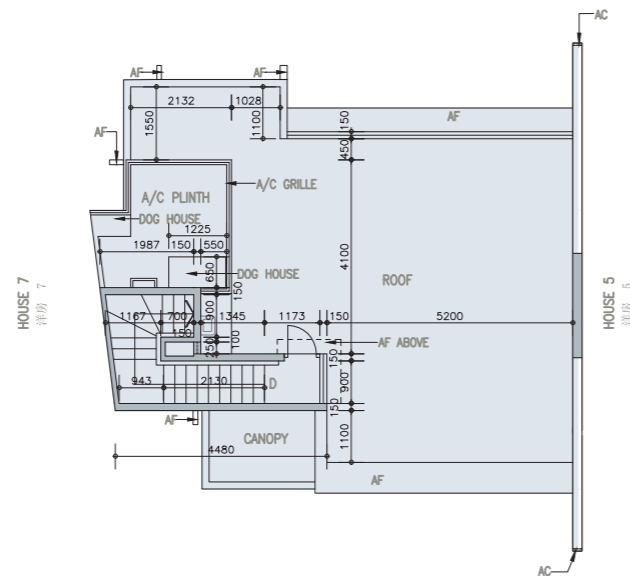
HOUSE 6  
洋房 6



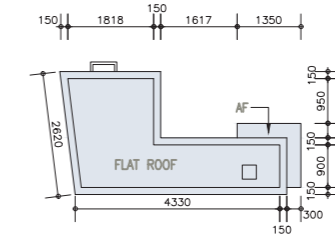
G/F  
地下



1/F  
1樓



ROOF  
天台



UPPER ROOF  
上層天台





## Floor plans of residential properties in the phase of the development

### 發展項目期數的住宅物業的樓面平面圖

#### HOUSE 7 洋房 7

Floor 樓層	Floor-to-floor height (refers to the height between the top surface of the structural slab of a floor and the top surface of the structural slab of its immediate upper floor) (m) 層與層之間的高度 (指該樓層之石屎地台面與上一層石屎地台面之高度距離) (米)	Thickness of the floor slabs (excluding plaster) (mm) 樓板 (不包括灰泥) 厚度 (毫米)
G/F 地下	3.45	150 175
	3.80	
	3.825	
	3.95	
	4.05	
1/F 1樓	4.175	150 175 200
	3.50	
	3.85	
Roof (Stairhood) 天台 (梯屋)	2.50	150

The internal areas of the residential properties on the upper floors will generally be slightly larger than those on the lower floors because of the reducing thickness of the structural walls on the upper floors.

Remark : The dimensions in the floor plans are all structural dimensions in millimetre.

#### Legend 圖例

A/C PLATFORM = Air-conditioner Platform 空調機平台

A/C PLATFORM ABOVE = Air-conditioner Platform Above 上層空調機平台

A/C Plinth = Air-conditioner Plinth 空調機底座

A/C GRILLE = Air-conditioner Grille 空調機格柵

AC = Aluminum Cladding 鋁質裝飾板

AD = Air Duct 通風槽

AF = Architectural Feature 建築裝飾

AF ABOVE = Architectural Feature Above 上層建築裝飾

AF AT 1/F = Architectural Feature at 1/F 建築裝飾設於1樓

AF BELOW = Architectural Feature Below 下層建築裝飾

B = Bathroom 浴室

BAL = Balcony 露台

BAL ABOVE = Balcony Above 上層露台

BL ABOVE = Building Line Above 上層建築物邊線

BR = Bedroom 睡房

CAB = Cabinet 櫃

CANOPY = 簷篷

CANOPY ABOVE = Canopy Above 上層簷篷

COMMON FLAT ROOF = 公用平台

D = Down 下

DIN = Dining Room 飯廳

DOG HOUSE = Mechanical and Electrical Services Duct Connecting to the Floor Below  
連接下層的機電設施管道

EL = Electricity Duct 電線槽

EL & ELV = Electricity Duct and Extra Low Voltage Duct/Cabinet  
電線槽及低電壓槽/箱

EL & ELV RM. = Electricity and Extra Low Voltage Room 電力及低電壓房

因住宅物業的較高樓層的結構牆的厚度遞減，較高樓層的內部面積，一般比較低樓層的內部面積稍大。

備註：樓面平面圖之尺規所列數字為以毫米標示之建築結構尺寸。

ELV = Extra Low Voltage Duct/Cabinet 低電壓槽/箱

FSI = Fire Service Inlet 消防入水掣

FLAT ROOF = 平台

GARDEN = 花園

HR = Hose Reel 消防喉轆

KIT = Kitchen 廚房

LAV = Lavatory 洗手間

LIFT = 升降機

LIFT LOBBY = 升降機大堂

LIGHT WELL = 光井

LIV = Living Room 客廳

MB = Master Bathroom 主人浴室

MBR = Master Bedroom 主人睡房

METAL CLADDING = 金屬裝飾板

OPEN KIT = Open Kitchen 開放式廚房

PD = Pipe Duct 管道槽

RS & MRR = Refuse Storage and Material Recovery Room 垃圾及物料回收室

ROOF = 天台

SPRINKLER CONTROL VALVE = 消防花酒控制閥

STO = Store 儲物房

U = Up 上

UP = Utility Platform 工作平台

UP ABOVE = Utility Platform Above 上層工作平台

UTILITY = Utility Room 工作間

VD = Ventilation Duct 通風槽

VOID = 中空

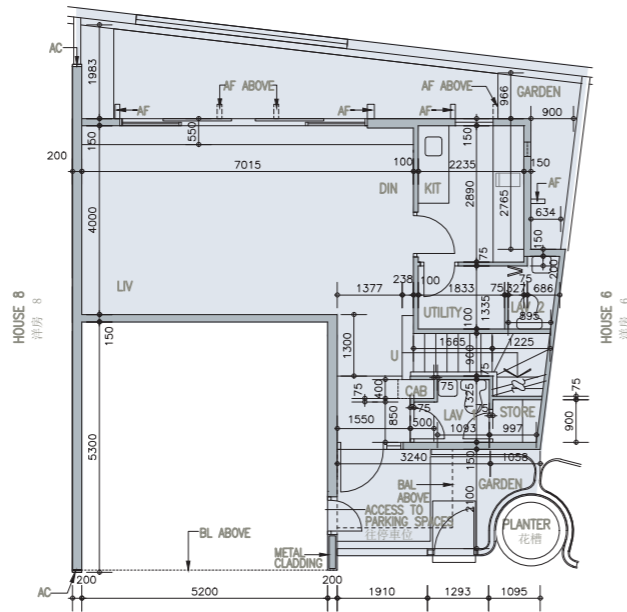
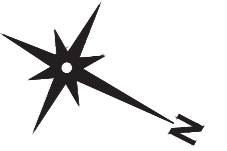
WMC = Water Meter Cabinet 水錶箱

WMR = Water Meter Room 水錶房

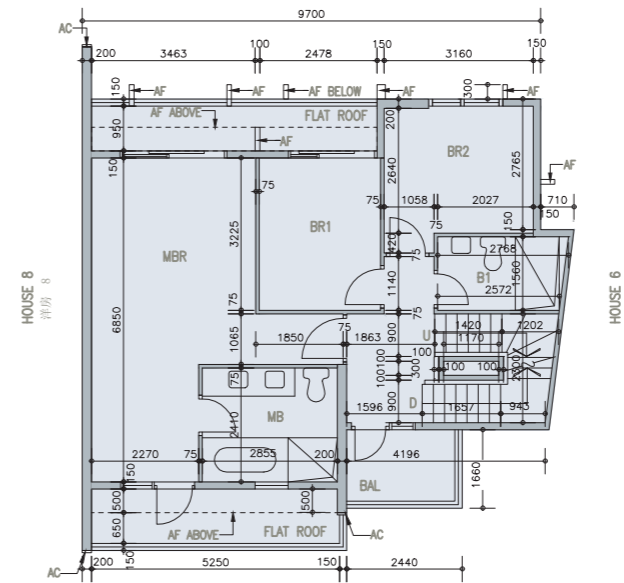
# Floor plans of residential properties in the phase of the development

## 發展項目期數的住宅物業的樓面平面圖

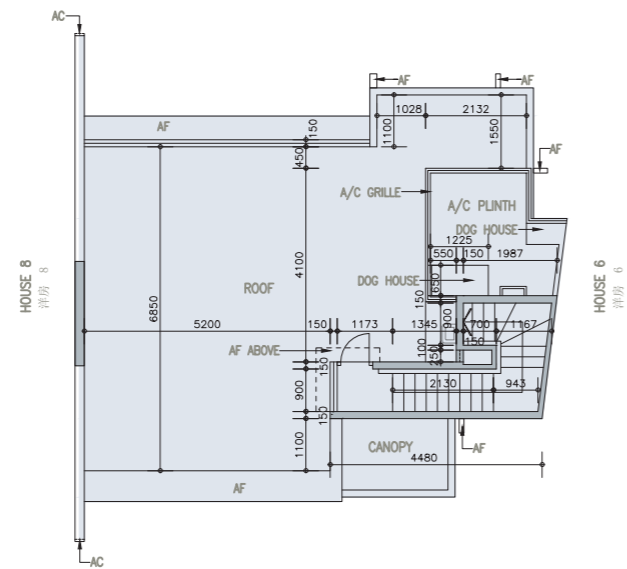
HOUSE 7  
洋房 7



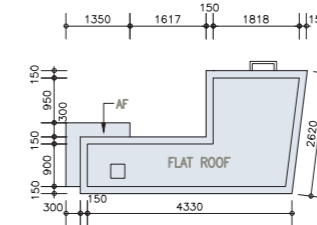
G/F  
地下



1/F  
1樓



ROOF  
天台



UPPER ROOF  
上層天台



## Floor plans of residential properties in the phase of the development

### 發展項目期數的住宅物業的樓面平面圖

#### HOUSE 8 洋房 8

Floor 樓層	Floor-to-floor height (refers to the height between the top surface of the structural slab of a floor and the top surface of the structural slab of its immediate upper floor) (m) 層與層之間的高度 (指該樓層之石屎地台面與上一層石屎地台面之高度距離) (米)	Thickness of the floor slabs (excluding plaster) (mm) 樓板 (不包括灰泥) 厚度 (毫米)
G/F 地下	3.45	150 225
	3.60	
	3.80	
	3.825	
	3.95	
	4.125 4.175	
1/F 1樓	3.50	150 175
	3.85	
Roof (Stairhood) 天台 (梯屋)	2.50	150

The internal areas of the residential properties on the upper floors will generally be slightly larger than those on the lower floors because of the reducing thickness of the structural walls on the upper floors.

Remark : The dimensions in the floor plans are all structural dimensions in millimetre.

#### Legend 圖例

A/C PLATFORM = Air-conditioner Platform 空調機平台

A/C PLATFORM ABOVE = Air-conditioner Platform Above 上層空調機平台

A/C Plinth = Air-conditioner Plinth 空調機底座

A/C GRILLE = Air-conditioner Grille 空調機格柵

AC = Aluminum Cladding 鋁質裝飾板

AD = Air Duct 通風槽

AF = Architectural Feature 建築裝飾

AF ABOVE = Architectural Feature Above 上層建築裝飾

AF AT 1/F = Architectural Feature at 1/F 建築裝飾設於1樓

AF BELOW = Architectural Feature Below 下層建築裝飾

B = Bathroom 浴室

BAL = Balcony 露台

BAL ABOVE = Balcony Above 上層露台

BL ABOVE = Building Line Above 上層建築物邊線

BR = Bedroom 睡房

CAB = Cabinet 櫃

CANOPY = 簷篷

CANOPY ABOVE = Canopy Above 上層簷篷

COMMON FLAT ROOF = 公用平台

D = Down 下

DIN = Dining Room 飯廳

DOG HOUSE = Mechanical and Electrical Services Duct Connecting to the Floor Below  
連接下層的機電設施管道

EL = Electricity Duct 電線槽

EL & ELV = Electricity Duct and Extra Low Voltage Duct/Cabinet  
電線槽及低電壓槽/箱

EL & ELV RM. = Electricity and Extra Low Voltage Room 電力及低電壓房

因住宅物業的較高樓層的結構牆的厚度遞減，較高樓層的內部面積，一般比較低樓層的內部面積稍大。

備註：樓面平面圖之尺規所列數字為以毫米標示之建築結構尺寸。

ELV = Extra Low Voltage Duct/Cabinet 低電壓槽/箱

FSI = Fire Service Inlet 消防入水掣

FLAT ROOF = 平台

GARDEN = 花園

HR = Hose Reel 消防喉轆

KIT = Kitchen 廚房

LAV = Lavatory 洗手間

LIFT = 升降機

LIFT LOBBY = 升降機大堂

LIGHT WELL = 光井

LIV = Living Room 客廳

MB = Master Bathroom 主人浴室

MBR = Master Bedroom 主人睡房

METAL CLADDING = 金屬裝飾板

OPEN KIT = Open Kitchen 開放式廚房

PD = Pipe Duct 管道槽

RS & MRR = Refuse Storage and Material Recovery Room 垃圾及物料回收室

ROOF = 天台

SPRINKLER CONTROL VALVE = 消防花酒控制閥

STO = Store 儲物房

U = Up 上

UP = Utility Platform 工作平台

UP ABOVE = Utility Platform Above 上層工作平台

UTILITY = Utility Room 工作間

VD = Ventilation Duct 通風槽

VOID = 中空

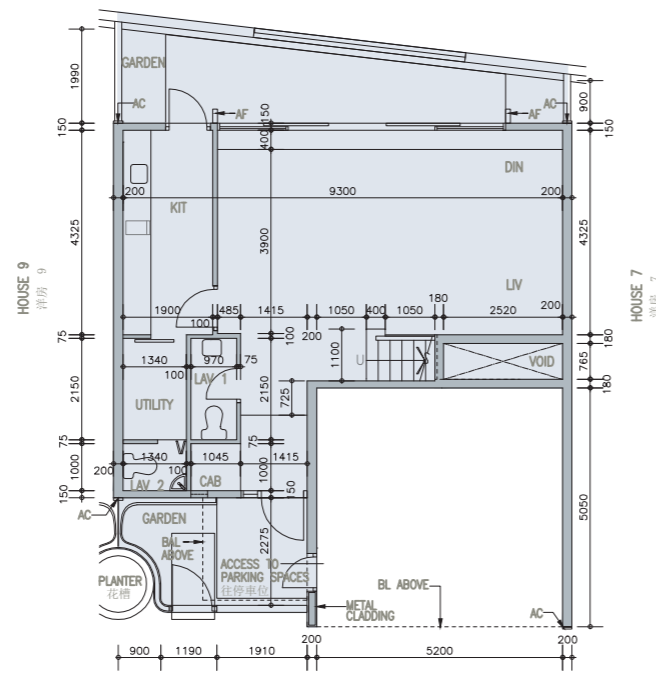
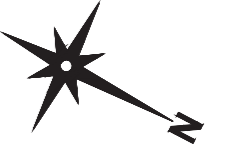
WMC = Water Meter Cabinet 水錶箱

WMR = Water Meter Room 水錶房

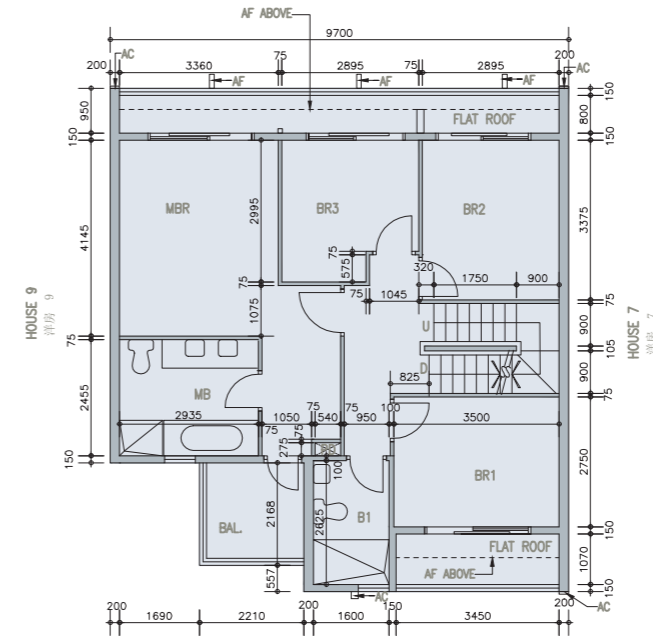
# Floor plans of residential properties in the phase of the development

## 發展項目期數的住宅物業的樓面平面圖

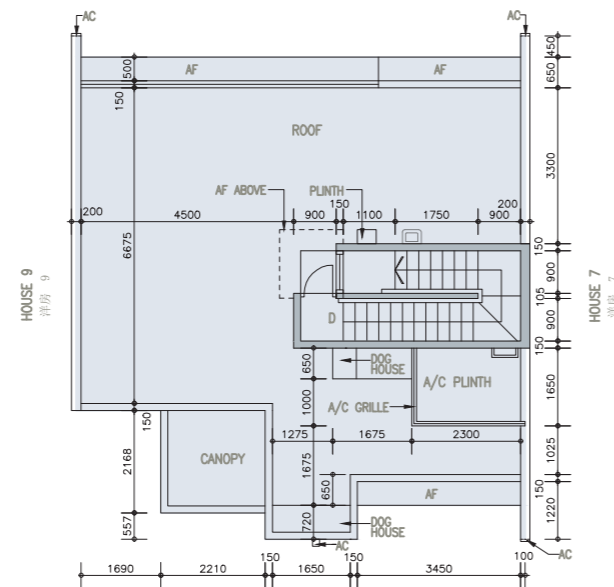
HOUSE 8  
洋房 8



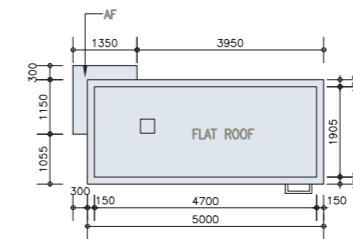
G/F  
地下



1/F  
1樓



ROOF  
天台



UPPER ROOF  
上層天台



## Floor plans of residential properties in the phase of the development

### 發展項目期數的住宅物業的樓面平面圖

#### HOUSE 9 洋房 9

Floor 樓層	Floor-to-floor height (refers to the height between the top surface of the structural slab of a floor and the top surface of the structural slab of its immediate upper floor) (m) 層與層之間的高度 (指該樓層之石屎地台面與上一層石屎地台面之高度距離) (米)	Thickness of the floor slabs (excluding plaster) (mm) 樓板 (不包括灰泥) 厚度 (毫米)
G/F 地下	3.45	150 225
	3.60	
	3.80	
	3.825	
	3.95	
	4.125 4.175	
1/F 1樓	3.50	150
	3.85	175
Roof (Stairhood) 天台 (梯屋)	2.50	150

The internal areas of the residential properties on the upper floors will generally be slightly larger than those on the lower floors because of the reducing thickness of the structural walls on the upper floors.

Remark : The dimensions in the floor plans are all structural dimensions in millimetre.

#### Legend 圖例

A/C PLATFORM = Air-conditioner Platform 空調機平台

A/C PLATFORM ABOVE = Air-conditioner Platform Above 上層空調機平台

A/C Plinth = Air-conditioner Plinth 空調機底座

A/C GRILLE = Air-conditioner Grille 空調機格柵

AC = Aluminum Cladding 鋁質裝飾板

AD = Air Duct 通風槽

AF = Architectural Feature 建築裝飾

AF ABOVE = Architectural Feature Above 上層建築裝飾

AF AT 1/F = Architectural Feature at 1/F 建築裝飾設於1樓

AF BELOW = Architectural Feature Below 下層建築裝飾

B = Bathroom 浴室

BAL = Balcony 露台

BAL ABOVE = Balcony Above 上層露台

BL ABOVE = Building Line Above 上層建築物邊線

BR = Bedroom 睡房

CAB = Cabinet 櫃

CANOPY = 簷篷

CANOPY ABOVE = Canopy Above 上層簷篷

COMMON FLAT ROOF = 公用平台

D = Down 下

DIN = Dining Room 飯廳

DOG HOUSE = Mechanical and Electrical Services Duct Connecting to the Floor Below  
連接下層的機電設施管道

EL = Electricity Duct 電線槽

EL & ELV = Electricity Duct and Extra Low Voltage Duct/Cabinet  
電線槽及低電壓槽/箱

EL & ELV RM. = Electricity and Extra Low Voltage Room 電力及低電壓房

因住宅物業的較高樓層的結構牆的厚度遞減，較高樓層的內部面積，一般比較低樓層的內部面積稍大。

備註：樓面平面圖之尺規所列數字為以毫米標示之建築結構尺寸。

ELV = Extra Low Voltage Duct/Cabinet 低電壓槽/箱

FSI = Fire Service Inlet 消防入水掣

FLAT ROOF = 平台

GARDEN = 花園

HR = Hose Reel 消防喉轆

KIT = Kitchen 廚房

LAV = Lavatory 洗手間

LIFT = 升降機

LIFT LOBBY = 升降機大堂

LIGHT WELL = 光井

LIV = Living Room 客廳

MB = Master Bathroom 主人浴室

MBR = Master Bedroom 主人睡房

METAL CLADDING = 金屬裝飾板

OPEN KIT = Open Kitchen 開放式廚房

PD = Pipe Duct 管道槽

RS & MRR = Refuse Storage and Material Recovery Room 垃圾及物料回收室

ROOF = 天台

SPRINKLER CONTROL VALVE = 消防花酒控制閥

STO = Store 儲物房

U = Up 上

UP = Utility Platform 工作平台

UP ABOVE = Utility Platform Above 上層工作平台

UTILITY = Utility Room 工作間

VD = Ventilation Duct 通風槽

VOID = 中空

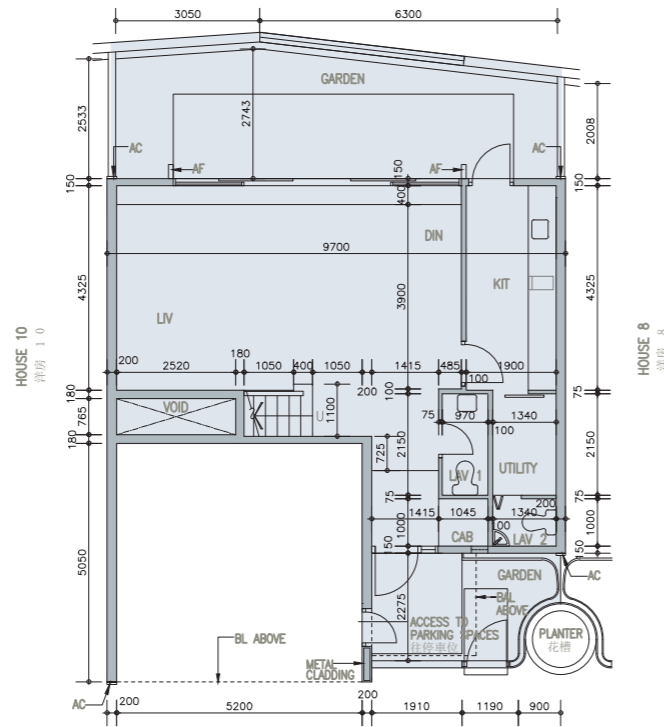
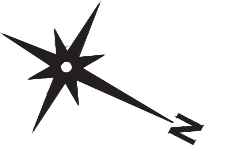
WMC = Water Meter Cabinet 水錶箱

WMR = Water Meter Room 水錶房

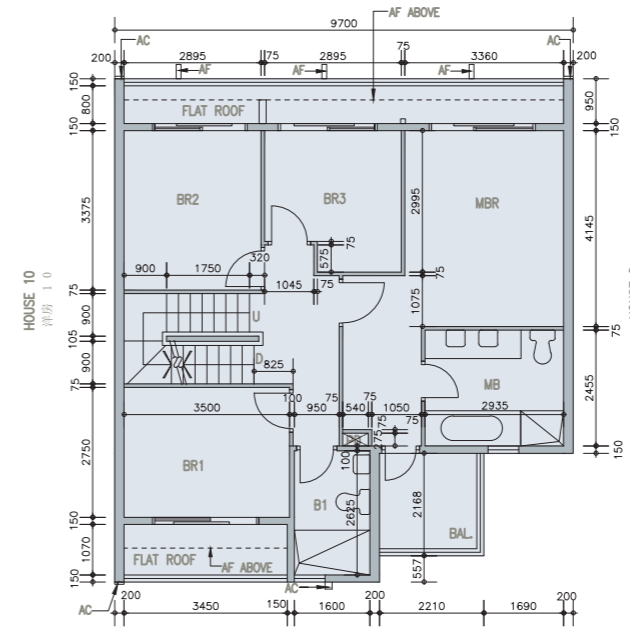
# Floor plans of residential properties in the phase of the development

## 發展項目期數的住宅物業的樓面平面圖

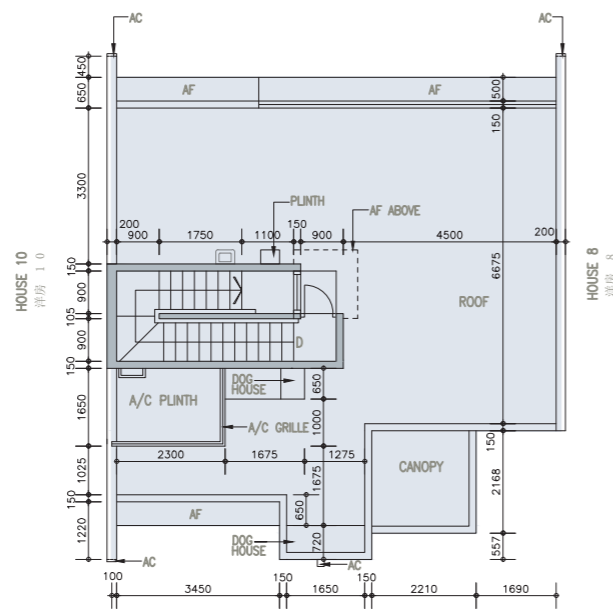
HOUSE 9  
洋房 9



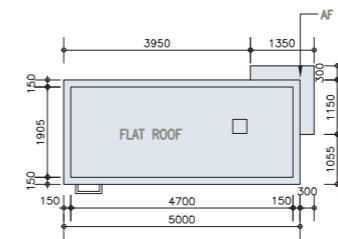
G/F  
地下



1/F  
1樓



ROOF  
天台



UPPER ROOF  
上層天台



## Floor plans of residential properties in the phase of the development

### 發展項目期數的住宅物業的樓面平面圖

#### HOUSE 10 洋房 10

Floor 樓層	Floor-to-floor height (refers to the height between the top surface of the structural slab of a floor and the top surface of the structural slab of its immediate upper floor) (m) 層與層之間的高度 (指該樓層之石屎地台面與上一層石屎地台面之高度距離) (米)	Thickness of the floor slabs (excluding plaster) (mm) 樓板 (不包括灰泥) 厚度 (毫米)
G/F 地下	3.45	150 225
	3.60	
	3.80	
	3.825	
	3.95	
	4.125 4.175	
1/F 1樓	3.50	150 175
	3.85	
Roof (Stairhood) 天台 (梯屋)	2.50	150

The internal areas of the residential properties on the upper floors will generally be slightly larger than those on the lower floors because of the reducing thickness of the structural walls on the upper floors.

Remark : The dimensions in the floor plans are all structural dimensions in millimetre.

#### Legend 圖例

A/C PLATFORM = Air-conditioner Platform 空調機平台

A/C PLATFORM ABOVE = Air-conditioner Platform Above 上層空調機平台

A/C Plinth = Air-conditioner Plinth 空調機底座

A/C GRILLE = Air-conditioner Grille 空調機格柵

AC = Aluminum Cladding 鋁質裝飾板

AD = Air Duct 通風槽

AF = Architectural Feature 建築裝飾

AF ABOVE = Architectural Feature Above 上層建築裝飾

AF AT 1/F = Architectural Feature at 1/F 建築裝飾設於1樓

AF BELOW = Architectural Feature Below 下層建築裝飾

B = Bathroom 浴室

BAL = Balcony 露台

BAL ABOVE = Balcony Above 上層露台

BL ABOVE = Building Line Above 上層建築物邊線

BR = Bedroom 睡房

CAB = Cabinet 櫃

CANOPY = 簷篷

CANOPY ABOVE = Canopy Above 上層簷篷

COMMON FLAT ROOF = 公用平台

D = Down 下

DIN = Dining Room 飯廳

DOG HOUSE = Mechanical and Electrical Services Duct Connecting to the Floor Below  
連接下層的機電設施管道

EL = Electricity Duct 電線槽

EL & ELV = Electricity Duct and Extra Low Voltage Duct/Cabinet  
電線槽及低電壓槽/箱

EL & ELV RM. = Electricity and Extra Low Voltage Room 電力及低電壓房

因住宅物業的較高樓層的結構牆的厚度遞減，較高樓層的內部面積，一般比較低樓層的內部面積稍大。

備註：樓面平面圖之尺規所列數字為以毫米標示之建築結構尺寸。

ELV = Extra Low Voltage Duct/Cabinet 低電壓槽/箱

FSI = Fire Service Inlet 消防入水掣

FLAT ROOF = 平台

GARDEN = 花園

HR = Hose Reel 消防喉轆

KIT = Kitchen 廚房

LAV = Lavatory 洗手間

LIFT = 升降機

LIFT LOBBY = 升降機大堂

LIGHT WELL = 光井

LIV = Living Room 客廳

MB = Master Bathroom 主人浴室

MBR = Master Bedroom 主人睡房

METAL CLADDING = 金屬裝飾板

OPEN KIT = Open Kitchen 開放式廚房

PD = Pipe Duct 管道槽

RS & MRR = Refuse Storage and Material Recovery Room 垃圾及物料回收室

ROOF = 天台

SPRINKLER CONTROL VALVE = 消防花酒控制閥

STO = Store 儲物房

U = Up 上

UP = Utility Platform 工作平台

UP ABOVE = Utility Platform Above 上層工作平台

UTILITY = Utility Room 工作間

VD = Ventilation Duct 通風槽

VOID = 中空

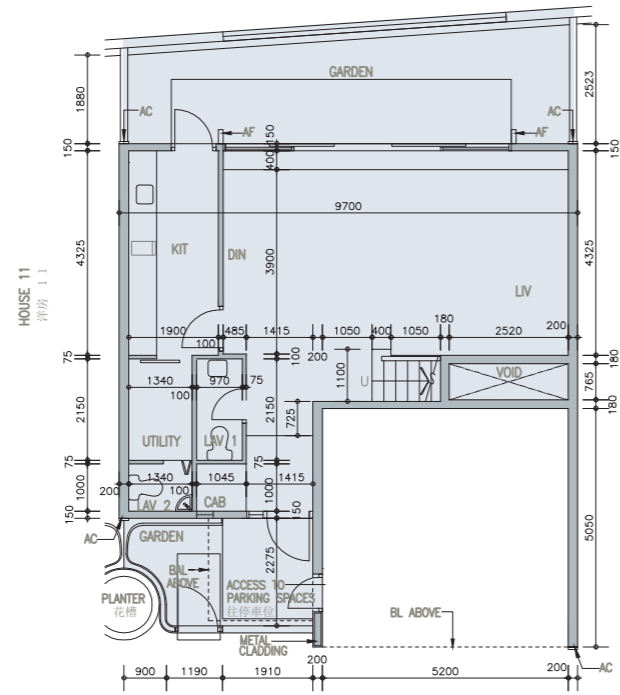
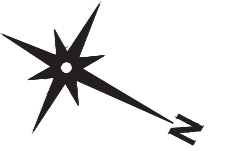
WMC = Water Meter Cabinet 水錶箱

WMR = Water Meter Room 水錶房

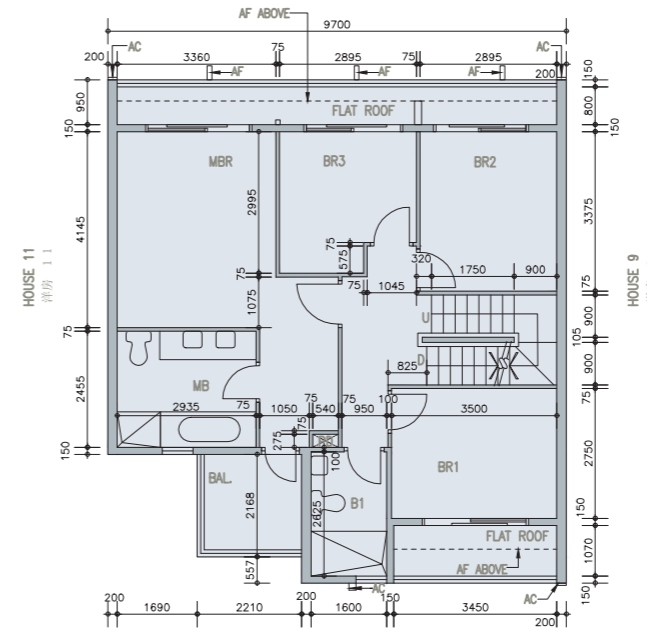
# Floor plans of residential properties in the phase of the development

## 發展項目期數的住宅物業的樓面平面圖

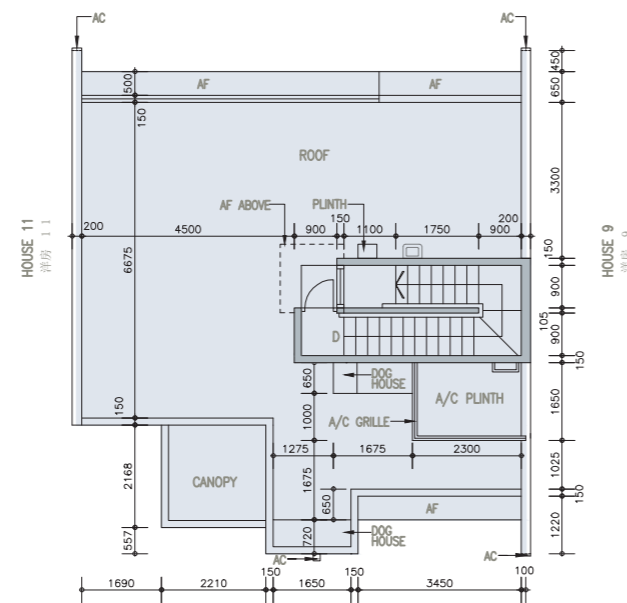
HOUSE 10  
洋房 10



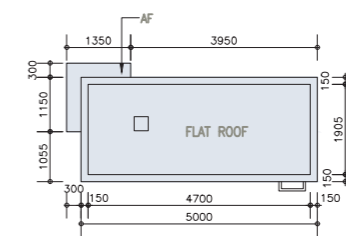
G/F  
地下



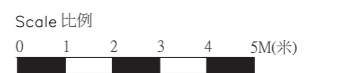
1/F  
1樓



ROOF  
天台



UPPER ROOF  
上層天台





## Floor plans of residential properties in the phase of the development

### 發展項目期數的住宅物業的樓面平面圖

#### HOUSE 11 洋房 11

Floor 樓層	Floor-to-floor height (refers to the height between the top surface of the structural slab of a floor and the top surface of the structural slab of its immediate upper floor) (m) 層與層之間的高度 (指該樓層之石屎地台面與上一層石屎地台面之高度距離) (米)	Thickness of the floor slabs (excluding plaster) (mm) 樓板 (不包括灰泥) 厚度 (毫米)
G/F 地下	3.45	150 225
	3.60	
	3.80	
	3.825	
	3.95	
	4.125 4.175	
1/F 1樓	3.50	150 175
	3.85	
Roof (Stairhood) 天台 (梯屋)	2.50	150

The internal areas of the residential properties on the upper floors will generally be slightly larger than those on the lower floors because of the reducing thickness of the structural walls on the upper floors.

Remark : The dimensions in the floor plans are all structural dimensions in millimetre.

#### Legend 圖例

A/C PLATFORM = Air-conditioner Platform 空調機平台

A/C PLATFORM ABOVE = Air-conditioner Platform Above 上層空調機平台

A/C Plinth = Air-conditioner Plinth 空調機底座

A/C GRILLE = Air-conditioner Grille 空調機格柵

AC = Aluminum Cladding 鋁質裝飾板

AD = Air Duct 通風槽

AF = Architectural Feature 建築裝飾

AF ABOVE = Architectural Feature Above 上層建築裝飾

AF AT 1/F = Architectural Feature at 1/F 建築裝飾設於1樓

AF BELOW = Architectural Feature Below 下層建築裝飾

B = Bathroom 浴室

BAL = Balcony 露台

BAL ABOVE = Balcony Above 上層露台

BL ABOVE = Building Line Above 上層建築物邊線

BR = Bedroom 睡房

CAB = Cabinet 櫃

CANOPY = 簷篷

CANOPY ABOVE = Canopy Above 上層簷篷

COMMON FLAT ROOF = 公用平台

D = Down 下

DIN = Dining Room 飯廳

DOG HOUSE = Mechanical and Electrical Services Duct Connecting to the Floor Below  
連接下層的機電設施管道

EL = Electricity Duct 電線槽

EL & ELV = Electricity Duct and Extra Low Voltage Duct/Cabinet  
電線槽及低電壓槽/箱

EL & ELV RM. = Electricity and Extra Low Voltage Room 電力及低電壓房

因住宅物業的較高樓層的結構牆的厚度遞減，較高樓層的內部面積，一般比較低樓層的內部面積稍大。

備註：樓面平面圖之尺規所列數字為以毫米標示之建築結構尺寸。

ELV = Extra Low Voltage Duct/Cabinet 低電壓槽/箱

FSI = Fire Service Inlet 消防入水掣

FLAT ROOF = 平台

GARDEN = 花園

HR = Hose Reel 消防喉轆

KIT = Kitchen 廚房

LAV = Lavatory 洗手間

LIFT = 升降機

LIFT LOBBY = 升降機大堂

LIGHT WELL = 光井

LIV = Living Room 客廳

MB = Master Bathroom 主人浴室

MBR = Master Bedroom 主人睡房

METAL CLADDING = 金屬裝飾板

OPEN KIT = Open Kitchen 開放式廚房

PD = Pipe Duct 管道槽

RS & MRR = Refuse Storage and Material Recovery Room 垃圾及物料回收室

ROOF = 天台

SPRINKLER CONTROL VALVE = 消防花酒控制閥

STO = Store 儲物房

U = Up 上

UP = Utility Platform 工作平台

UP ABOVE = Utility Platform Above 上層工作平台

UTILITY = Utility Room 工作間

VD = Ventilation Duct 通風槽

VOID = 中空

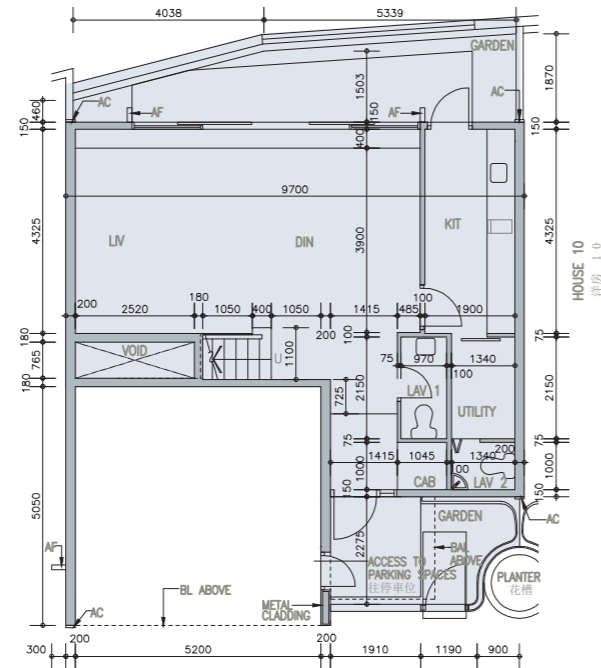
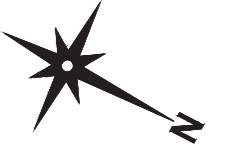
WMC = Water Meter Cabinet 水錶箱

WMR = Water Meter Room 水錶房

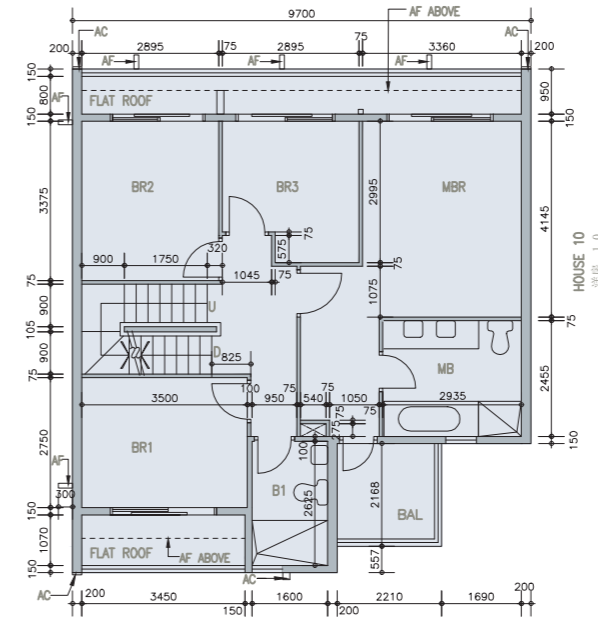
# Floor plans of residential properties in the phase of the development

## 發展項目期數的住宅物業的樓面平面圖

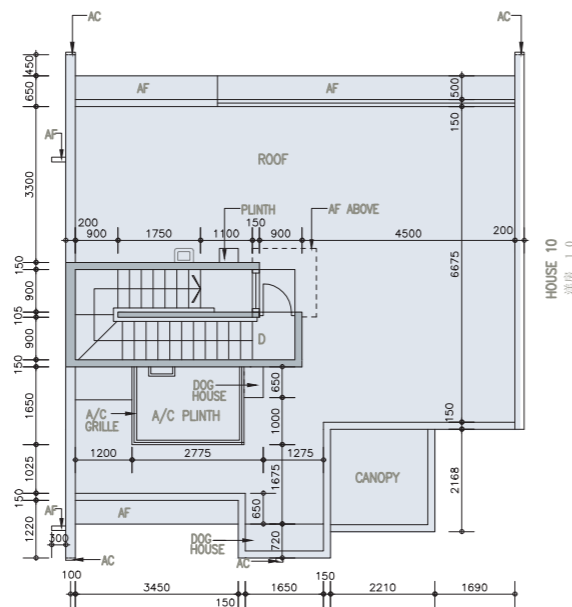
HOUSE 11  
洋房 11



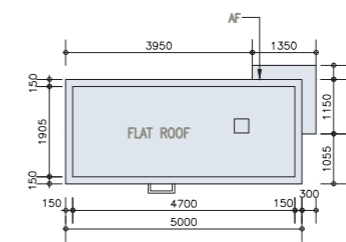
G/F  
地下



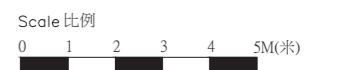
1/F  
1樓



ROOF  
天台



UPPER ROOF  
上層天台



## Floor plans of residential properties in the phase of the development

### 發展項目期數的住宅物業的樓面平面圖

#### HOUSE 12 洋房 12

Floor 樓層	Floor-to-floor height (refers to the height between the top surface of the structural slab of a floor and the top surface of the structural slab of its immediate upper floor) (m) 層與層之間的高度 (指該樓層之石屎地台面與上一層石屎地台面之高度距離) (米)	Thickness of the floor slabs (excluding plaster) (mm) 樓板 (不包括灰泥) 厚度 (毫米)
G/F 地下	3.45	150 225
	3.60	
	3.80	
	3.825	
	3.95	
	4.125 4.175	
1/F 1樓	3.50	150 175
	3.85	
Roof (Stairhood) 天台 (梯屋)	2.50	150

The internal areas of the residential properties on the upper floors will generally be slightly larger than those on the lower floors because of the reducing thickness of the structural walls on the upper floors.

Remark : The dimensions in the floor plans are all structural dimensions in millimetre.

#### Legend 圖例

A/C PLATFORM = Air-conditioner Platform 空調機平台

A/C PLATFORM ABOVE = Air-conditioner Platform Above 上層空調機平台

A/C Plinth = Air-conditioner Plinth 空調機底座

A/C GRILLE = Air-conditioner Grille 空調機格柵

AC = Aluminum Cladding 鋁質裝飾板

AD = Air Duct 通風槽

AF = Architectural Feature 建築裝飾

AF ABOVE = Architectural Feature Above 上層建築裝飾

AF AT 1/F = Architectural Feature at 1/F 建築裝飾設於1樓

AF BELOW = Architectural Feature Below 下層建築裝飾

B = Bathroom 浴室

BAL = Balcony 露台

BAL ABOVE = Balcony Above 上層露台

BL ABOVE = Building Line Above 上層建築物邊線

BR = Bedroom 睡房

CAB = Cabinet 櫃

CANOPY = 簷篷

CANOPY ABOVE = Canopy Above 上層簷篷

COMMON FLAT ROOF = 公用平台

D = Down 下

DIN = Dining Room 飯廳

DOG HOUSE = Mechanical and Electrical Services Duct Connecting to the Floor Below  
連接下層的機電設施管道

EL = Electricity Duct 電線槽

EL & ELV = Electricity Duct and Extra Low Voltage Duct/Cabinet  
電線槽及低電壓槽/箱

EL & ELV RM. = Electricity and Extra Low Voltage Room 電力及低電壓房

因住宅物業的較高樓層的結構牆的厚度遞減，較高樓層的內部面積，一般比較低樓層的內部面積稍大。

備註：樓面平面圖之尺規所列數字為以毫米標示之建築結構尺寸。

ELV = Extra Low Voltage Duct/Cabinet 低電壓槽/箱

FSI = Fire Service Inlet 消防入水掣

FLAT ROOF = 平台

GARDEN = 花園

HR = Hose Reel 消防喉轆

KIT = Kitchen 廚房

LAV = Lavatory 洗手間

LIFT = 升降機

LIFT LOBBY = 升降機大堂

LIGHT WELL = 光井

LIV = Living Room 客廳

MB = Master Bathroom 主人浴室

MBR = Master Bedroom 主人睡房

METAL CLADDING = 金屬裝飾板

OPEN KIT = Open Kitchen 開放式廚房

PD = Pipe Duct 管道槽

RS & MRR = Refuse Storage and Material Recovery Room 垃圾及物料回收室

ROOF = 天台

SPRINKLER CONTROL VALVE = 消防花酒控制閥

STO = Store 儲物房

U = Up 上

UP = Utility Platform 工作平台

UP ABOVE = Utility Platform Above 上層工作平台

UTILITY = Utility Room 工作間

VD = Ventilation Duct 通風槽

VOID = 中空

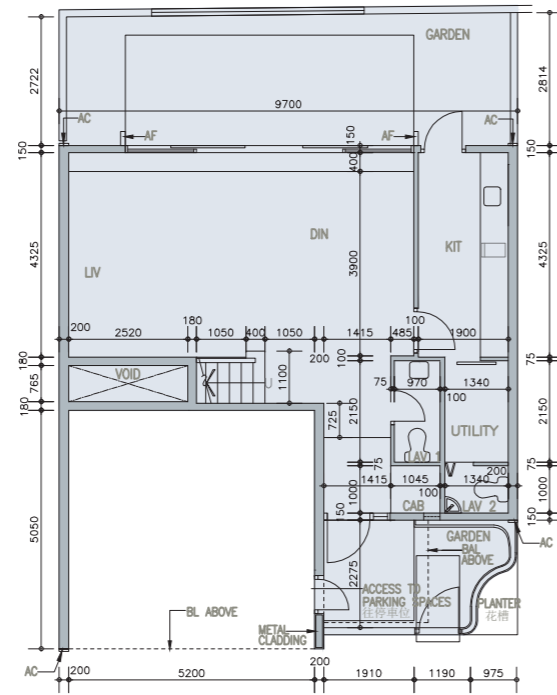
WMC = Water Meter Cabinet 水錶箱

WMR = Water Meter Room 水錶房

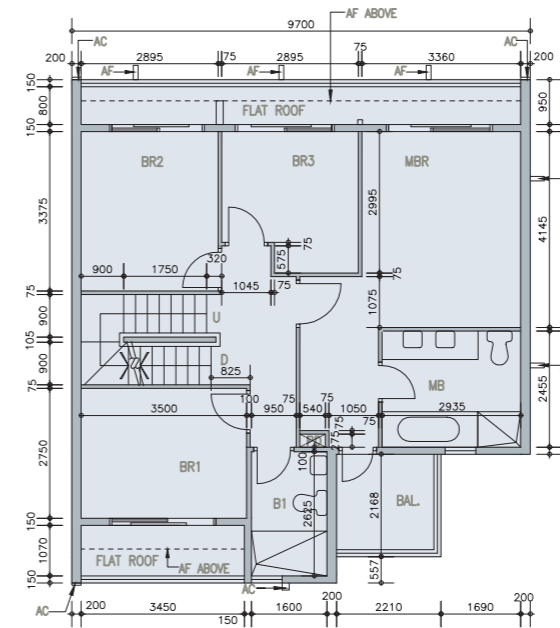
# Floor plans of residential properties in the phase of the development

## 發展項目期數的住宅物業的樓面平面圖

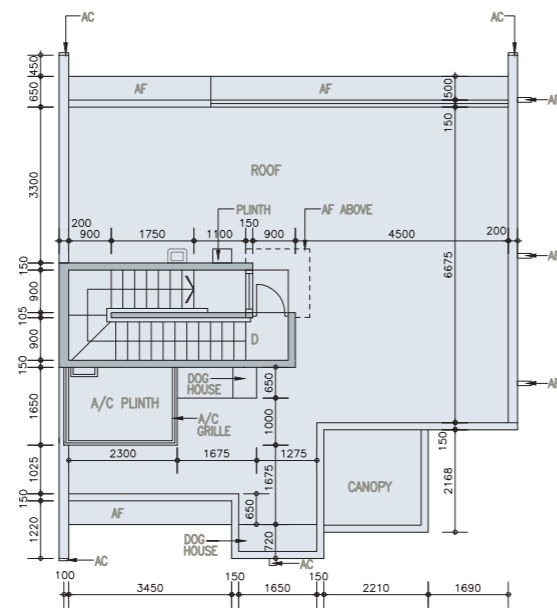
HOUSE 12  
洋房 12



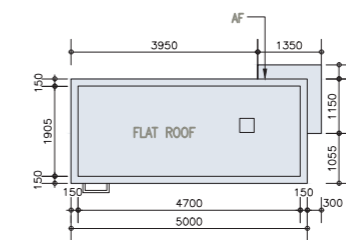
G/F  
地下



1/F  
1樓



ROOF  
天台



UPPER ROOF  
上層天台

