



This blank area falls outside the coverage of the aerial photograph.
此空白範圍不為本鳥瞰照片所覆蓋。

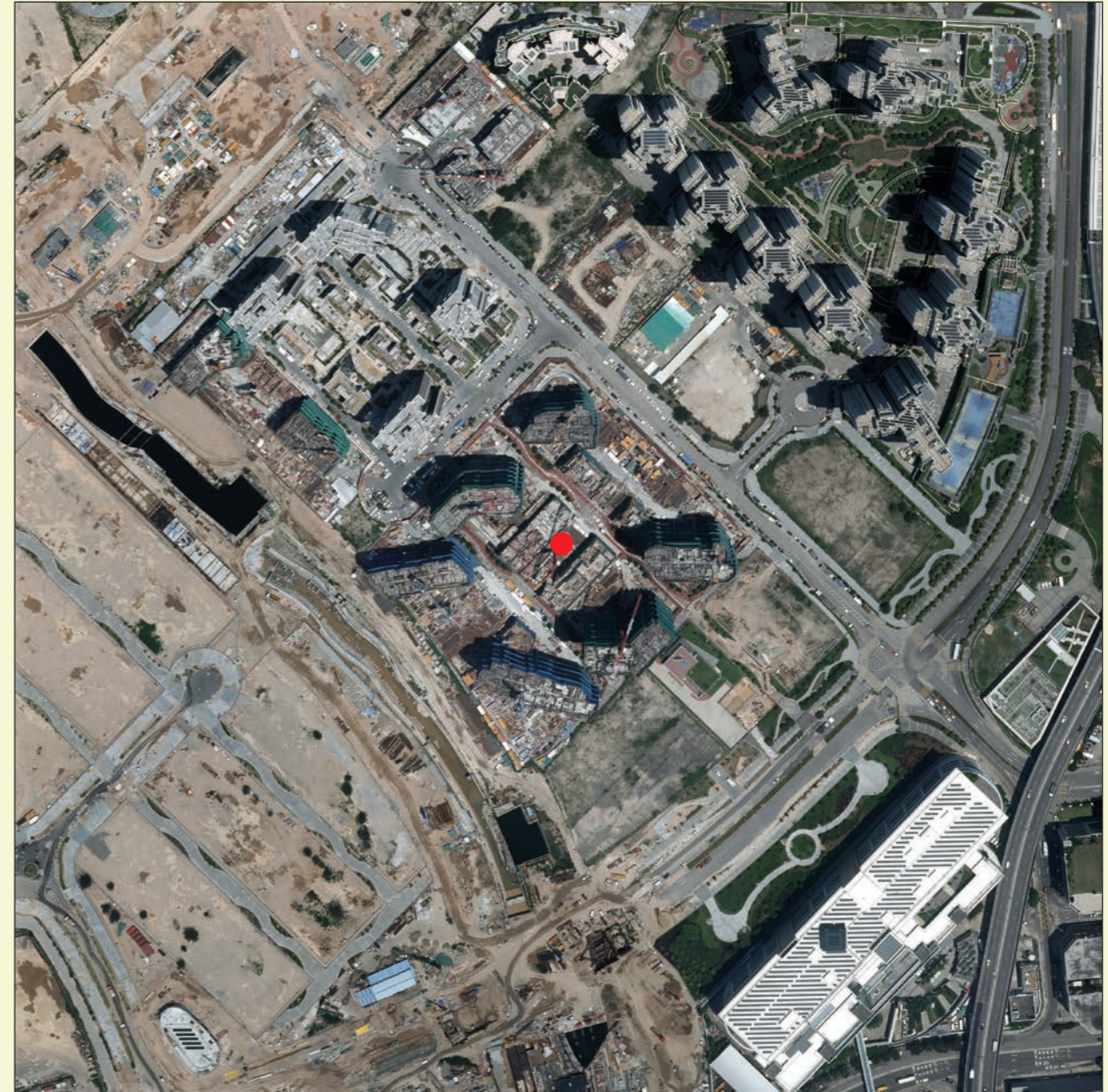
● Location of the Development
發展項目的位置

Adopted from part of the aerial photograph taken by the Survey and Mapping Office of Lands Department at a flying height of 6,000 feet, photo No. E034169C dated 10 March 2018.

摘錄自地政總署測繪處於2018年3月10日在6,000呎飛行高度拍攝之鳥瞰照片，照片編號E034169C。

Notes:

1. The copies of the aerial photographs of the Development are available for free inspection at the sales office during opening hours.
2. Due to technical reasons, the Aerial Photographs have shown more than the area required under the Residential Properties (First-hand Sales) Ordinance.
3. Survey and Mapping Office, Lands Department, The Government of HKSAR © Copyright reserved - reproduction by permission only.



● Location of the Development
發展項目的位置

Adopted from part of the aerial photograph taken by the Survey and Mapping Office of Lands Department at a flying height of 6,900 feet, photo No. E028036C dated 29 May 2017.

摘錄自地政總署測繪處於2017年5月29日在6,900呎飛行高度拍攝之鳥瞰照片，照片編號E028036C。

註：

1. 發展項目的鳥瞰照片之副本可於售樓處開放時間內免費查閱。
2. 因技術原因，鳥瞰照片所顯示之範圍多於《一手住宅物業銷售條例》所要求者。
3. 香港特別行政區政府地政總署測繪處©版權所有，未經許可，不得複製。