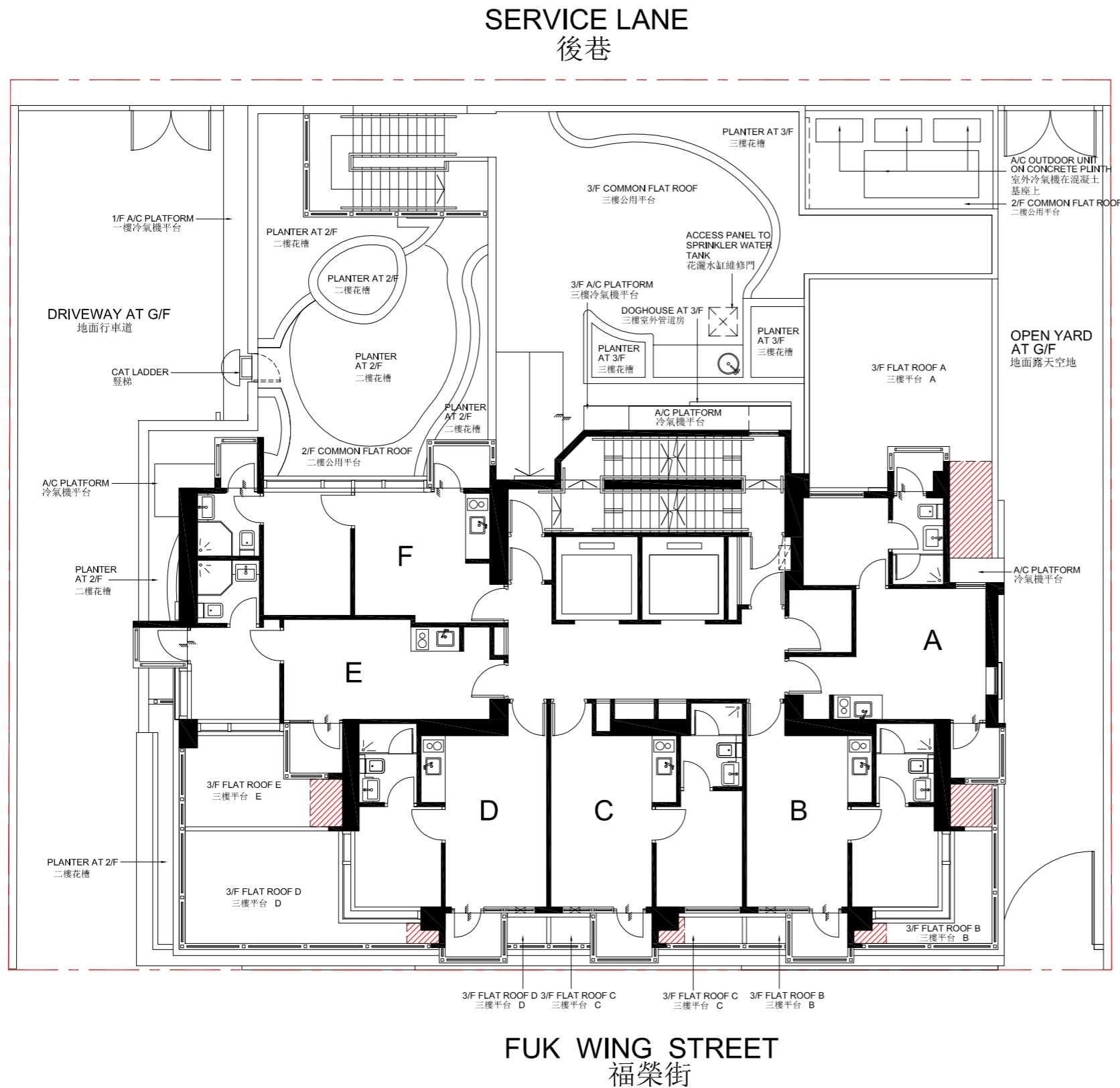


LAYOUT PLAN OF  
THE DEVELOPMENT

ADJOINING BUILDING  
毗連建築物



由發展項目的認可人士提供的該等建築物及設施的預計落成日期為 2018 年 8 月 31 日。

The estimated date of completion of the building and facilities within the Development, as provided by the authorized person for the Development is 31 August 2018.

- 發展項目的界線  
Boundary line of the Development
- A/C PLATFORM = 冷氣機平台  
Air-conditioner Platform
- 大廈公契界定為公共地方以供吊船維修管道的空間  
Common Areas Under Deed of Mutual Covenant For Pipe Works Maintenance Access By Gondola

比例尺 SCALE:   
0m (米) 5m (米)

備註：  
圖中所示之發展項目住宅大樓布局參照適用於 5 樓至 12 樓，15 樓至 23 樓及 25 樓至 27 樓之布局。

Note:  
The layout of the residential tower of the Development shown in the plan is based on the layout applicable to 5/F to 12/F, 15/F to 23/F and 25/F to 27/F.