

# 10 發展項目的住宅物業的樓面平面圖

## FLOOR PLANS OF RESIDENTIAL PROPERTIES IN THE DEVELOPMENT

在本頁上之備註和圖例適用於全部的「發展項目的住宅物業的樓面平面圖」頁數。

The notes and legends on this page apply to all pages of "Floor plans of residential properties in the development".

### 樓面平面圖圖例

#### Legends of the Floor Plans

A/C UNIT	Air-conditioning Unit	冷氣機
BAL.	Balcony	露台
BAL. ABOVE	Balcony Above	上層位置為露台
BATH	Bathroom	浴室
BED RM.	Bedroom	睡房
BED RM. 1	Bedroom 1	睡房 1
BED RM. 2	Bedroom 2	睡房 2
C.D.	Cable Duct	電線管道
DN	Down	落
E.D.	Electric Cable Duct	電線管道
ELEC. ROOM	Electric Meter Room	電錶房
ELV	Extra Low Voltage Duct	弱電電線管道
F.H.	Fire Hydrant	消防栓
H.R.	Hose Reel	消防喉轆
LIV./DIN.	Living Room and Dining Room	客廳及飯廳
MASTER BED RM.	Master Bedroom	主人睡房
M. BATH	Master Bathroom	主人浴室
OPEN KIT.	Open Kitchen	開放式廚房
PD	Pipe Duct	管道
REFUSE RM.	Refuse Storage and Material Recovery Room	垃圾及物料回收室
T.D.	Telephone Duct	電話線管道
T.G.	Town Gas	煤氣
T.G. METER CABINET	Town Gas Meter Cabinet	煤氣錶櫃
TOP OF BAL.	Top of Balcony	露台上蓋
TOP OF U.P.	Top of Utility Platform	工作平台上蓋
U.P.	Utility Platform	工作平台
U.P. ABOVE	Utility Platform Above	上層位置為工作平台
WMC	Water Meter Cabinet	水錶櫃

#### 備註：

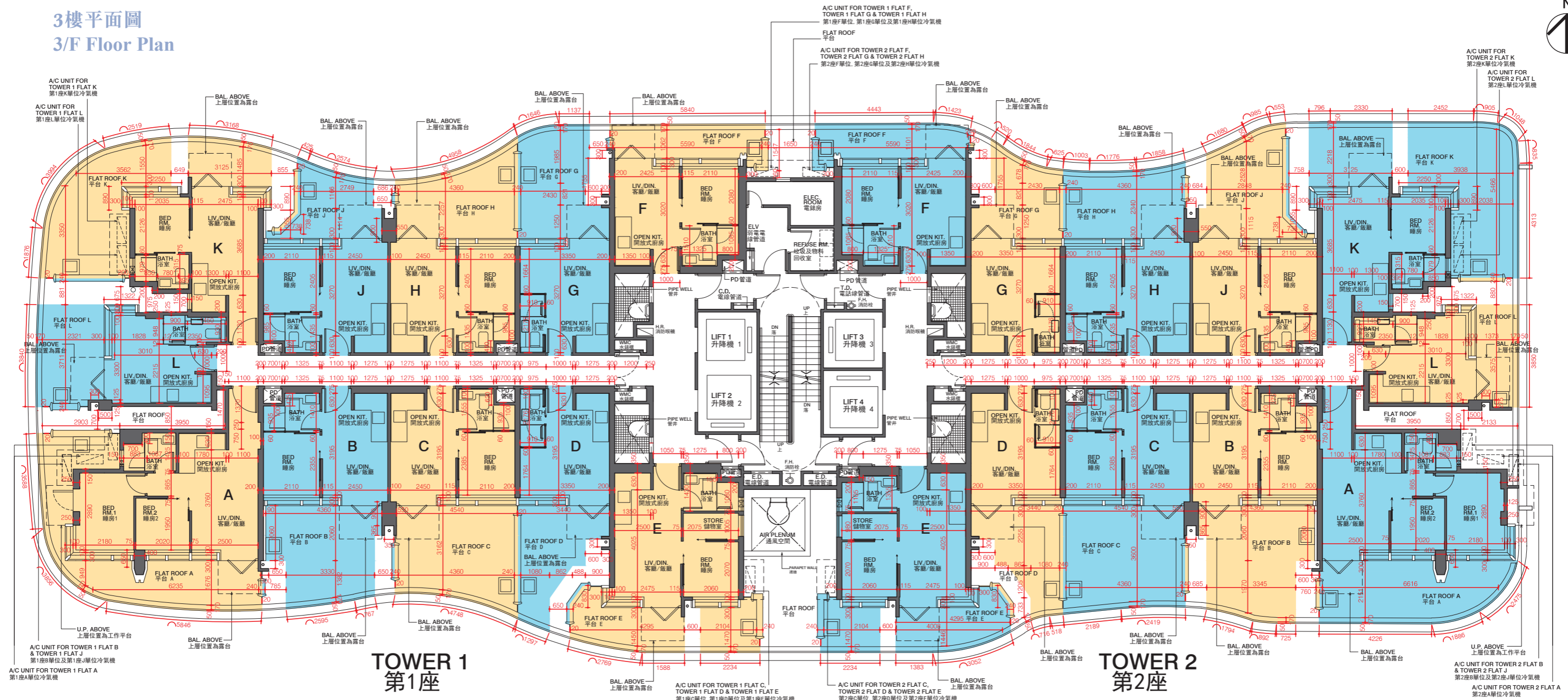
1. 部分住宅單位的露台、平台、天台或外牆或設有外露之公用喉管，或外牆裝飾板內藏有公用喉管。
2. 部分住宅單位內之部分天花或有跌級樓板，用以安裝上層之機電設備或配合上層之結構、建築設計及/或裝修設計上的需要。
3. 部分住宅單位內或設有假陣或假天花用以安裝冷氣喉管及/或其他機電設備。
4. 平面圖所列之數字為以毫米標示之建築結構尺寸。
5. 各住宅物業的樓面平面圖內所展示之裝置及設備的圖標如浴缸、洗面盆、座廁、淋浴間、洗滌盆、櫃(如有)等乃根據最新經批准的建築圖則擬備，並形狀、尺寸、比例或與實際提供的裝置及設備存在差異，僅供示意及參考之用。

#### Notes:

1. Common pipes exposed or enclosed in cladding may be located at the balcony, flat roof, roof or external wall of some residential units.
2. There may be sunken slabs at some parts of the ceiling inside some residential units for the installation of mechanical and electrical services of the floor above or due to the structural, architectural and/or decoration design requirements of the floor above.
3. There may be ceiling bulkheads or false ceiling inside some residential units for the installation of air-conditioning conduits and/or other mechanical and electrical services.
4. The dimensions of the floor plans are all structural dimensions in millimeter.
5. Those icons of fittings and fitments shown on the floor plans of residential properties like bathtubs, wash basins, water closets, shower cubicles, sink units, cabinets (if any) etc. are prepared in accordance with the latest approved building plans. Their shapes, dimensions, scales may be different from the fittings and fitments actually provided and they are for indication and reference only.

# 10 發展項目的住宅物業的樓面平面圖 FLOOR PLANS OF RESIDENTIAL PROPERTIES IN THE DEVELOPMENT

## 3樓平面圖 3/F Floor Plan



比例：0米/M 5米/M  
Scale: 0m/M 5m/M

每個住宅物業 Each Residential Property	座數 Tower	單位 Flat 樓層 Floor	A	B	C	D	E	F	G	H	J	K	L
層與層之間的高度 (毫米) Floor to Floor Height (mm)	1及2	3樓	3500	3500	3500	3500	3500	3500	3500	3500	3500	3500	3500
樓板 (不包括灰泥) 的厚度 (毫米) Thickness of Floor Slab (excluding plaster) (mm)	1 and 2	3/F	150	150	150	150	150	150	150	150	150	150	150

因住宅物業的較高樓層的結構牆的厚度遞減，較高樓層的內部面積，一般比較低樓層的內部面積稍大。  
請參閱本售樓說明書第20頁為住宅物業樓面平面圖而設之備註及名詞及簡稱的圖例。

備註：1. 平面圖所列的數字為以毫米標示之建築結構尺寸。  
2. 平台空白位置為供維修大廈設備使用的公用地方。

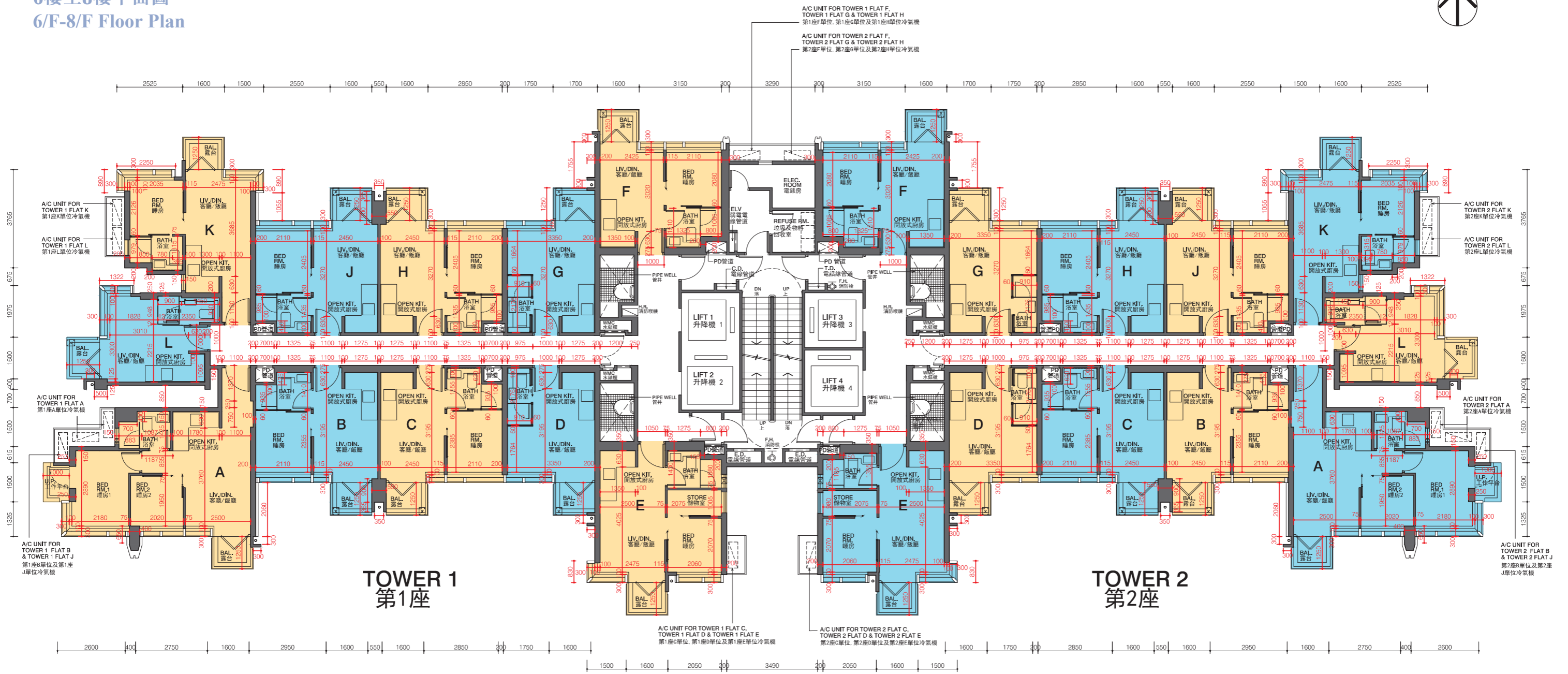
The internal areas of the residential properties on the upper floors will generally be slightly larger than those on the lower floors because of the reducing thickness of the structural walls on the upper floors.  
Please refer to page 20 of this sales brochure for the remarks and legends of the terms and abbreviations for the floor plans of residential properties.  
Notes: 1. The dimensions in floor plans are all structural dimensions in millimeter.  
2. Blank areas on flat roof are common areas for building facility maintenance.

# 10 發展項目的住宅物業的樓面平面圖

## FLOOR PLANS OF RESIDENTIAL PROPERTIES IN THE DEVELOPMENT

### 6樓至8樓平面圖

### 6/F-8/F Floor Plan



比例：0米/M 5米/M  
Scale: 0m/M 5m/M

每個住宅物業 Each Residential Property	座數 Tower	單位 Flat 樓層 Floor	A	B	C	D	E	F	G	H	J	K	L
			層與層之間的高度 (毫米) Floor to Floor Height (mm)	1及2 1 and 2	6樓至8樓 6/F-8/F	3065	3065	3065	3065	3065	3065	3065	3065
樓板 (不包括灰泥) 的厚度 (毫米) Thickness of Floor Slab (excluding plaster) (mm)			150	150	150	150	150	150	150	150	150	150	150

因住宅物業的較高樓層的結構牆的厚度遞減，較高樓層的內部面積，一般比較低樓層的內部面積稍大。請參閱本售樓說明書第20頁為住宅物業樓面平面圖而設之備註及名詞及簡稱的圖例。

備註：1. 平面圖所列的數字為以毫米標示之建築結構尺寸。

The internal areas of the residential properties on the upper floors will generally be slightly larger than those on the lower floors because of the reducing thickness of the structural walls on the upper floors.

Please refer to page 20 of this sales brochure for the remarks and legends of the terms and abbreviations for the floor plans of residential properties.

Notes: 1. The dimensions in floor plans are all structural dimensions in millimeter.

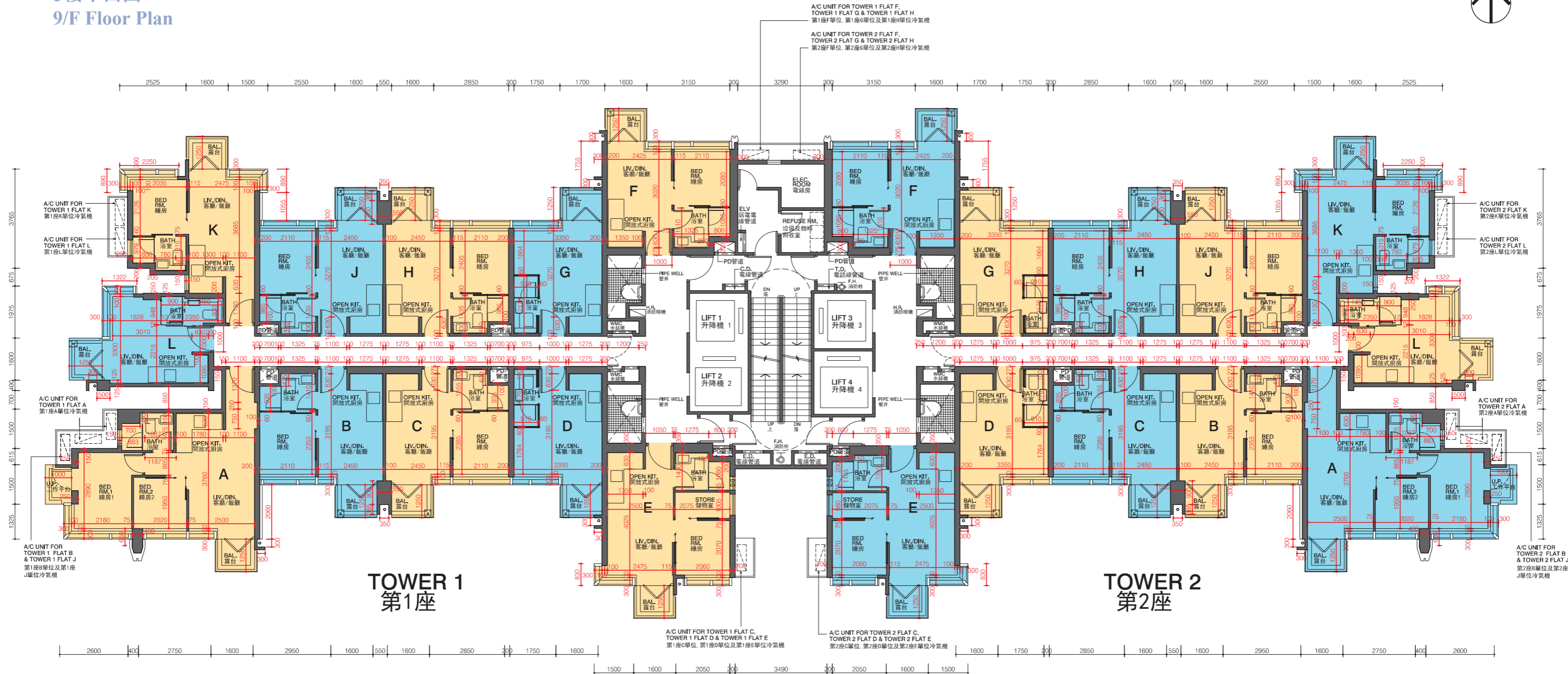


# 10 發展項目的住宅物業的樓面平面圖

## FLOOR PLANS OF RESIDENTIAL PROPERTIES IN THE DEVELOPMENT

### 9樓平面圖

### 9/F Floor Plan



比例：0米/M 5米/M  
Scale: 0m 5m

每個住宅物業 Each Residential Property	座數 Tower	單位 Flat 樓層 Floor	A	B	C	D	E	F	G	H	J	K	L
			層與層之間的高度 (毫米) Floor to Floor Height (mm)	1 及 2	9樓 9/F	3065	3065	3065	3065	3065	3065	3065	3065
樓板 (不包括灰泥) 的厚度 (毫米) Thickness of Floor Slab (excluding plaster) (mm)	1 and 2		150	150	150	150	150	150	150	150	150	150	150

因住宅物業的較高樓層的結構牆的厚度遞減，較高樓層的內部面積，一般比較低樓層的內部面積稍大。請參閱本售樓說明書第20頁為住宅物業樓面平面圖而設之備註及名詞及簡稱的圖例。

備註：平面圖所列的數字為以毫米標示之建築結構尺寸。

The internal areas of the residential properties on the upper floors will generally be slightly larger than those on the lower floors because of the reducing thickness of the structural walls on the upper floors.

Please refer to page 20 of this sales brochure for the remarks and legends of the terms and abbreviations for the floor plans of residential properties.

Notes: The dimensions in floor plans are all structural dimensions in millimeter.

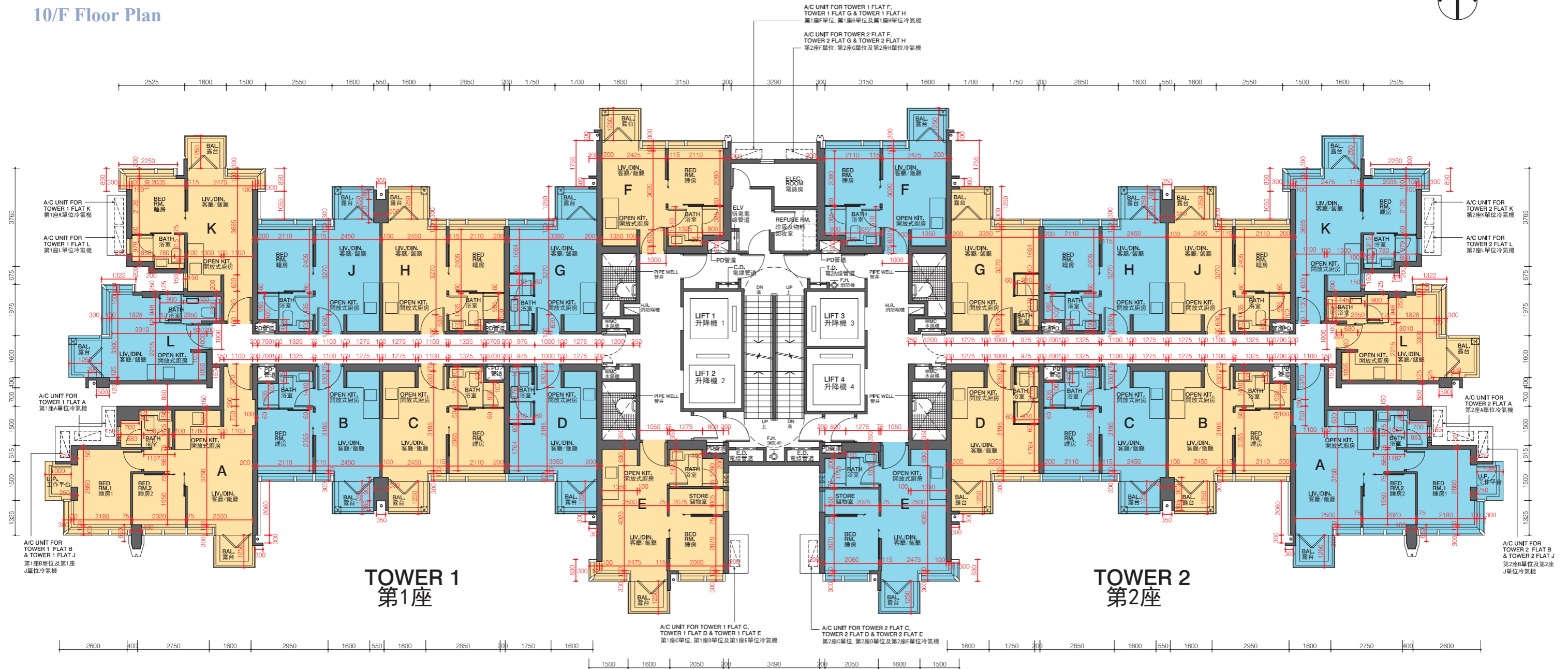


# 10 發展項目的住宅物業的樓面平面圖

## FLOOR PLANS OF RESIDENTIAL PROPERTIES IN THE DEVELOPMENT

### 10樓平面圖

### 10/F Floor Plan



比例：0米/M 5米/M  
Scale: 0m/M 5m/M

每個住宅物業 Each Residential Property	座數 Tower	樓層 Floor	單位 Flat											
			A	B	C	D	E	F	G	H	J	K	L	
層與層之間的高度 (毫米) Floor to Floor Height (mm)	1及2	10樓	3065	3065	3065	3065	3065	3065	3065	3065	3065	3065	3065	3065
樓板 (不包括灰泥) 的厚度 (毫米) Thickness of Floor Slab (excluding plaster) (mm)	1 and 2	10/F	150	150	150	150	150	150	150	150	150	150	150	150

因住宅物業的較高樓層的結構牆的厚度遞減，較高樓層的內部面積，一般比較低樓層的內部面積稍大。請參閱本售樓說明書第20頁為住宅物業樓面平面圖而設之備註及名詞及簡稱的圖例。

備註：平面圖所列的數字為以毫米標示之建築結構尺寸。

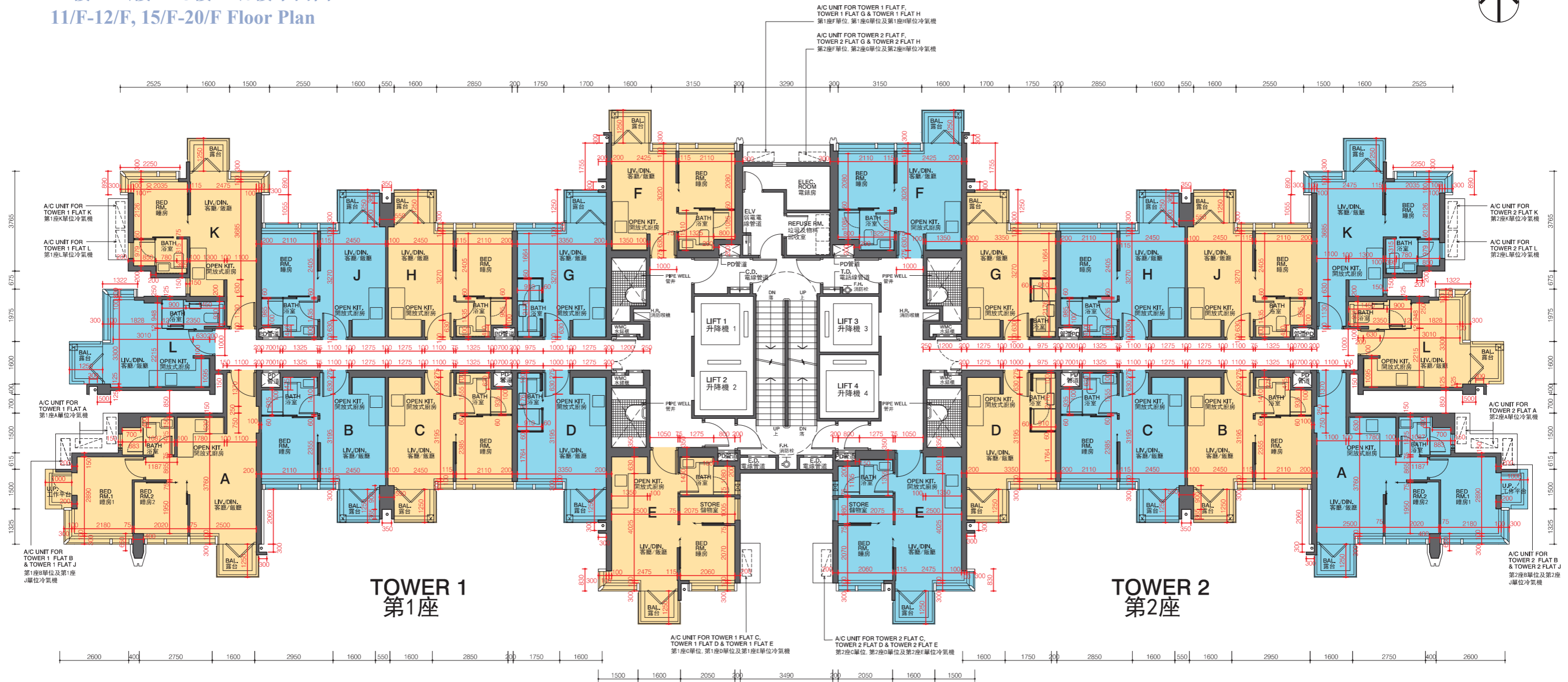
The internal areas of the residential properties on the upper floors will generally be slightly larger than those on the lower floors because of the reducing thickness of the structural walls on the upper floors.

Please refer to page 20 of this sales brochure for the remarks and legends of the terms and abbreviations for the floor plans of residential properties.

Notes: The dimensions in floor plans are all structural dimensions in millimeter.

# 10 發展項目的住宅物業的樓面平面圖 FLOOR PLANS OF RESIDENTIAL PROPERTIES IN THE DEVELOPMENT

## 11樓至12樓、15樓至20樓平面圖 11/F-12/F, 15/F-20/F Floor Plan



比例：0米/M 5米/M  
Scale: 0m/M 5m/M

每個住宅物業 Each Residential Property	座數 Tower	單位 Flat 樓層 Floor	A	B	C	D	E	F	G	H	J	K	L
			層與層之間的高度 (毫米) Floor to Floor Height (mm)	1及2	11樓至12樓, 15樓至20樓 11/F-12/F, 15/F-20/F	3065	3065	3065	3065	3065	3065	3065	3065
樓板 (不包括灰泥) 的厚度 (毫米) Thickness of Floor Slab (excluding plaster) (mm)	1 and 2		150	150	150	150	150	150	150	150	150	150	150

因住宅物業的較高樓層的結構牆的厚度遞減，較高樓層的內部面積，一般比較低樓層的內部面積稍大。請參閱本售樓說明書第20頁為住宅物業樓面平面圖而設之備註及名詞及簡稱的圖例。

備註：平面圖所列的數字為以毫米標示之建築結構尺寸。

The internal areas of the residential properties on the upper floors will generally be slightly larger than those on the lower floors because of the reducing thickness of the structural walls on the upper floors.

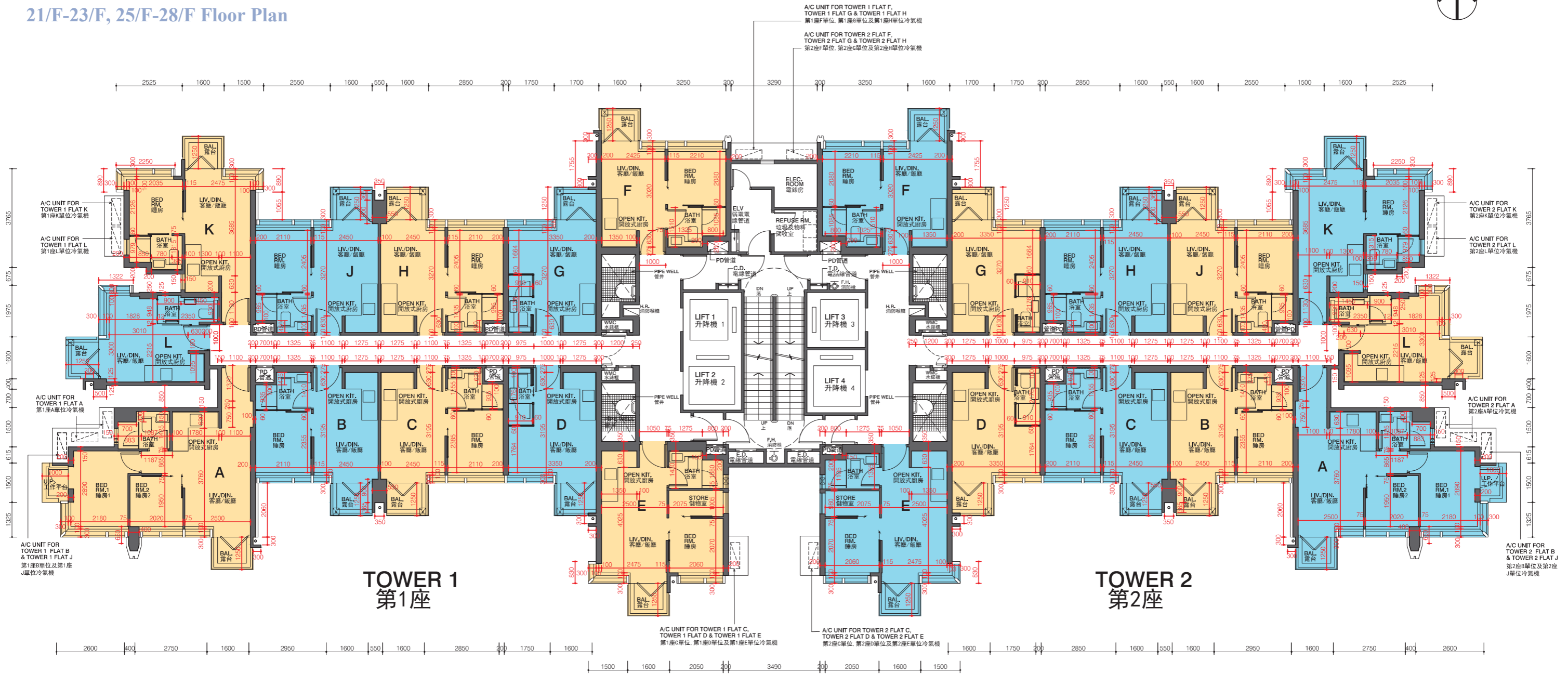
Please refer to page 20 of this sales brochure for the remarks and legends of the terms and abbreviations for the floor plans of residential properties.

Notes: The dimensions in floor plans are all structural dimensions in millimeter.



# 10 發展項目的住宅物業的樓面平面圖 FLOOR PLANS OF RESIDENTIAL PROPERTIES IN THE DEVELOPMENT

## 21樓至23樓、25樓至28樓平面圖 21/F-23/F, 25/F-28/F Floor Plan



比例：0米/M 5米/M  
Scale: 0m/M 5m/M

每個住宅物業 Each Residential Property	座數 Tower	單位 Flat 樓層 Floor	A	B	C	D	E	F	G	H	J	K	L
層與層之間的高度 (毫米) Floor to Floor Height (mm)	1及2	21樓至23樓, 25樓至28樓	3065	3065	3065	3065	3065	3065	3065	3065	3065	3065	3065
樓板 (不包括灰泥) 的厚度 (毫米) Thickness of Floor Slab (excluding plaster) (mm)	1 and 2	21/F-23/F, 25/F-28/F	150	150	150	150	150	150	150	150	150	150	150

因住宅物業的較高樓層的結構牆的厚度遞減，較高樓層的內部面積，一般比較低樓層的內部面積稍大。  
請參閱本售樓說明書第20頁為住宅物業樓面平面圖而設之備註及名詞及簡稱的圖例。

備註：平面圖所列的數字為以毫米標示之建築結構尺寸。

The internal areas of the residential properties on the upper floors will generally be slightly larger than those on the lower floors because of the reducing thickness of the structural walls on the upper floors.

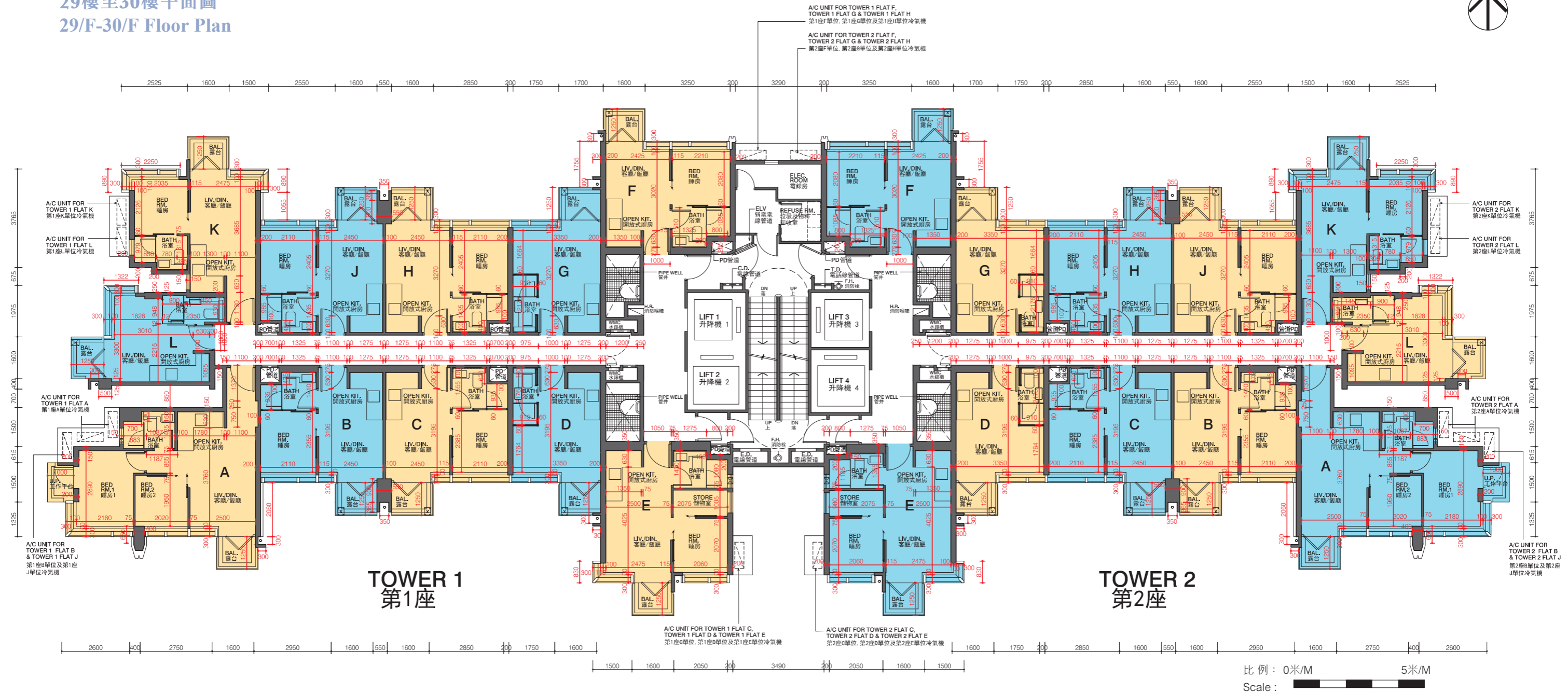
Please refer to page 20 of this sales brochure for the remarks and legends of the terms and abbreviations for the floor plans of residential properties.

Notes: The dimensions in floor plans are all structural dimensions in millimeter.



# 10 發展項目的住宅物業的樓面平面圖 FLOOR PLANS OF RESIDENTIAL PROPERTIES IN THE DEVELOPMENT

## 29樓至30樓平面圖 29/F-30/F Floor Plan



每個住宅物業 Each Residential Property	座數 Tower	單位 Flat 樓層 Floor	A	B	C	D	E	F	G	H	J	K	L
			層與層之間的高度 (毫米) Floor to Floor Height (mm)	1及2 1 and 2	29樓 29/F	3500	3500	3500	3500	3500	3500	3500	3500
樓板 (不包括灰泥) 的厚度 (毫米) Thickness of Floor Slab (excluding plaster) (mm)		30樓 30/F	3150, 3200, 3250, 3400, 3500	3500	3150, 3400, 3425, 3500	3225, 3500	3150, 3200, 3300, 3400, 3425, 3500	3200, 3300, 3500	3225, 3500	3150, 3250, 3400, 3425, 3500	3150, 3400, 3425, 3500	3050, 3200, 3300, 3400, 3500	3200, 3500
		29樓至30樓 29/F-30/F	150	150	150	150	150	150	150	150	150	150	150

因住宅物業的較高樓層的結構牆的厚度遞減，較高樓層的內部面積，一般比較低樓層的內部面積稍大。  
請參閱本售樓說明書第20頁為住宅物業樓面平面圖而設之備註及名詞及簡稱的圖例。

備註：平面圖所列的數字為以毫米標示之建築結構尺寸。

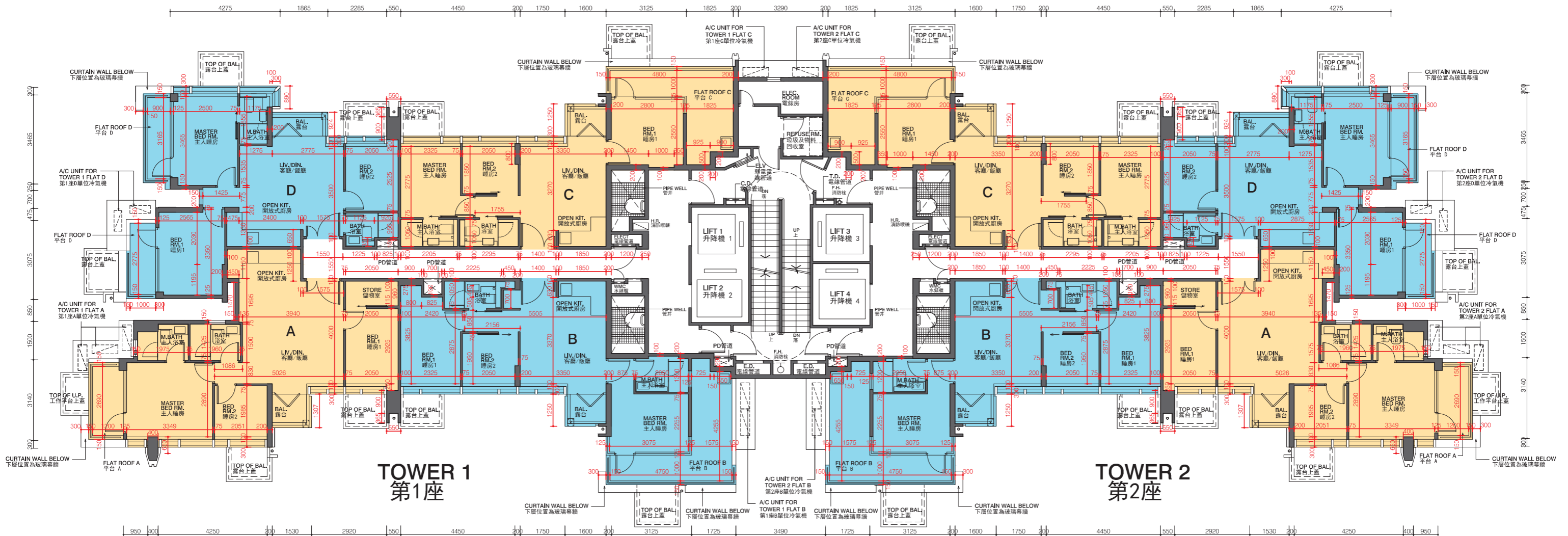
The internal areas of the residential properties on the upper floors will generally be slightly larger than those on the lower floors because of the reducing thickness of the structural walls on the upper floors.

Please refer to page 20 of this sales brochure for the remarks and legends of the terms and abbreviations for the floor plans of residential properties.

Notes: The dimensions in floor plans are all structural dimensions in millimeter.

# 10 發展項目的住宅物業的樓面平面圖 FLOOR PLANS OF RESIDENTIAL PROPERTIES IN THE DEVELOPMENT

## 31樓平面圖 31/F Floor Plan



比例：0米/M 5米/M  
Scale: 0m/M 5m/M

每個住宅物業 Each Residential Property	座數 Tower	單位 Flat 樓層 Floor	A	B	C	D
			層與層之間的高度 (毫米) Floor to Floor Height (mm)	1及2 1 and 2	31樓 31/F	3500
樓板 (不包括灰泥) 的厚度 (毫米) Thickness of Floor Slab (excluding plaster) (mm)			200	200	200	200

因住宅物業的較高樓層的結構牆的厚度遞減，較高樓層的內部面積，一般比較低樓層的內部面積稍大。請參閱本售樓說明書第20頁為住宅物業樓面平面圖而設之備註及名詞及簡稱的圖例。

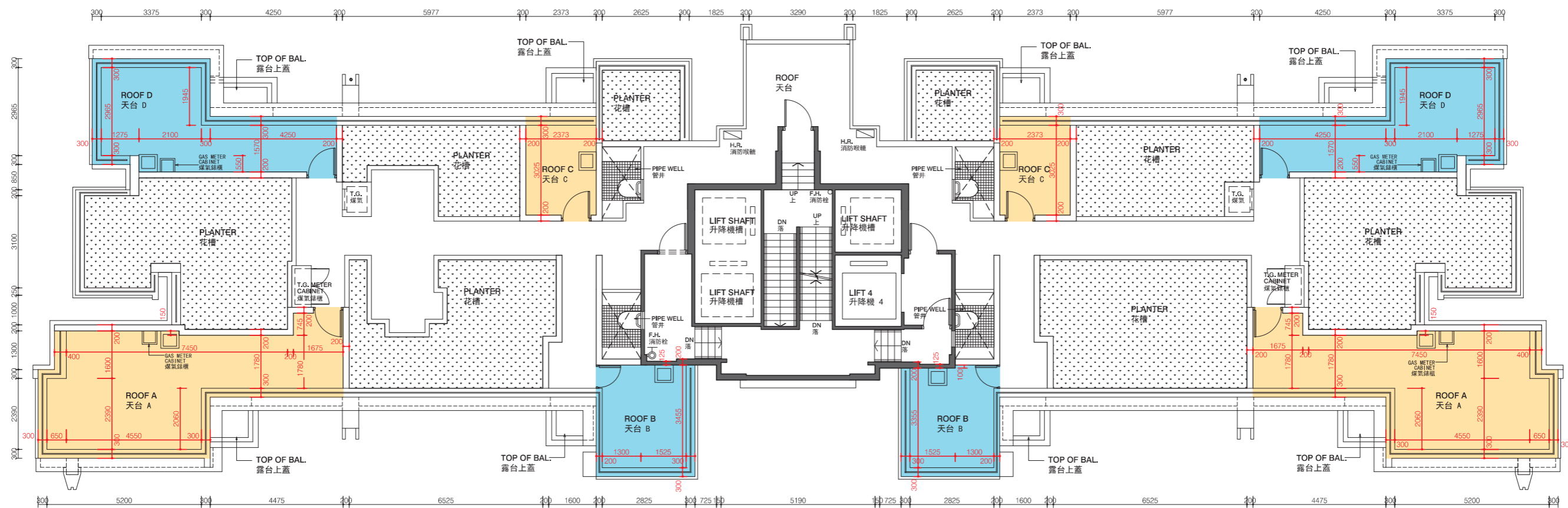
備註：平面圖所列的數字為以毫米標示之建築結構尺寸。

The internal areas of the residential properties on the upper floors will generally be slightly larger than those on the lower floors because of the reducing thickness of the structural walls on the upper floors.

Please refer to page 20 of this sales brochure for the remarks and legends of the terms and abbreviations for the floor plans of residential properties.

Notes: The dimensions in floor plans are all structural dimensions in millimeter.

天台平面圖  
Roof Plan



比例：0米/M 5米/M  
Scale : 0m 5m

每個住宅物業 Each Residential Property	座數 Tower	樓層 Floor	A	B	C	D
層與層之間的高度(毫米) Floor to Floor Height (mm)	1及2 1 and 2	天台 Roof	不適用 Not Applicable	不適用 Not Applicable	不適用 Not Applicable	不適用 Not Applicable
樓板(不包括灰泥)的厚度(毫米) Thickness of Floor Slab (excluding plaster) (mm)			不適用 Not Applicable	不適用 Not Applicable	不適用 Not Applicable	不適用 Not Applicable

因住宅物業的較高樓層的結構牆的厚度遞減，較高樓層的內部面積，一般比較低樓層的內部面積稍大。請參閱本售樓說明書第20頁為住宅物業樓面平面圖而設之備註及名詞及簡稱的圖例。

備註：1. 平面圖所列的數字為以毫米標示之建築結構尺寸。  
2. 有關天台的位置在該發展項目經建築事務監督批准的建築圖則上列為私人天台，實際上其用途為天台，而其面積將以天台計算。

The internal areas of the residential properties on the upper floors will generally be slightly larger than those on the lower floors because of the reducing thickness of the structural walls on the upper floors.

Please refer to page 20 of this sales brochure for the remarks and legends of the terms and abbreviations for the floor plans of residential properties.

Notes: 1. The dimensions in floor plans are all structural dimensions in millimeter.  
2. For the location of the roof, it was specified as private flat roof in the general building plans of the development approved by the Building Authority. In practice, it is a roof and its area is calculated under the roof.