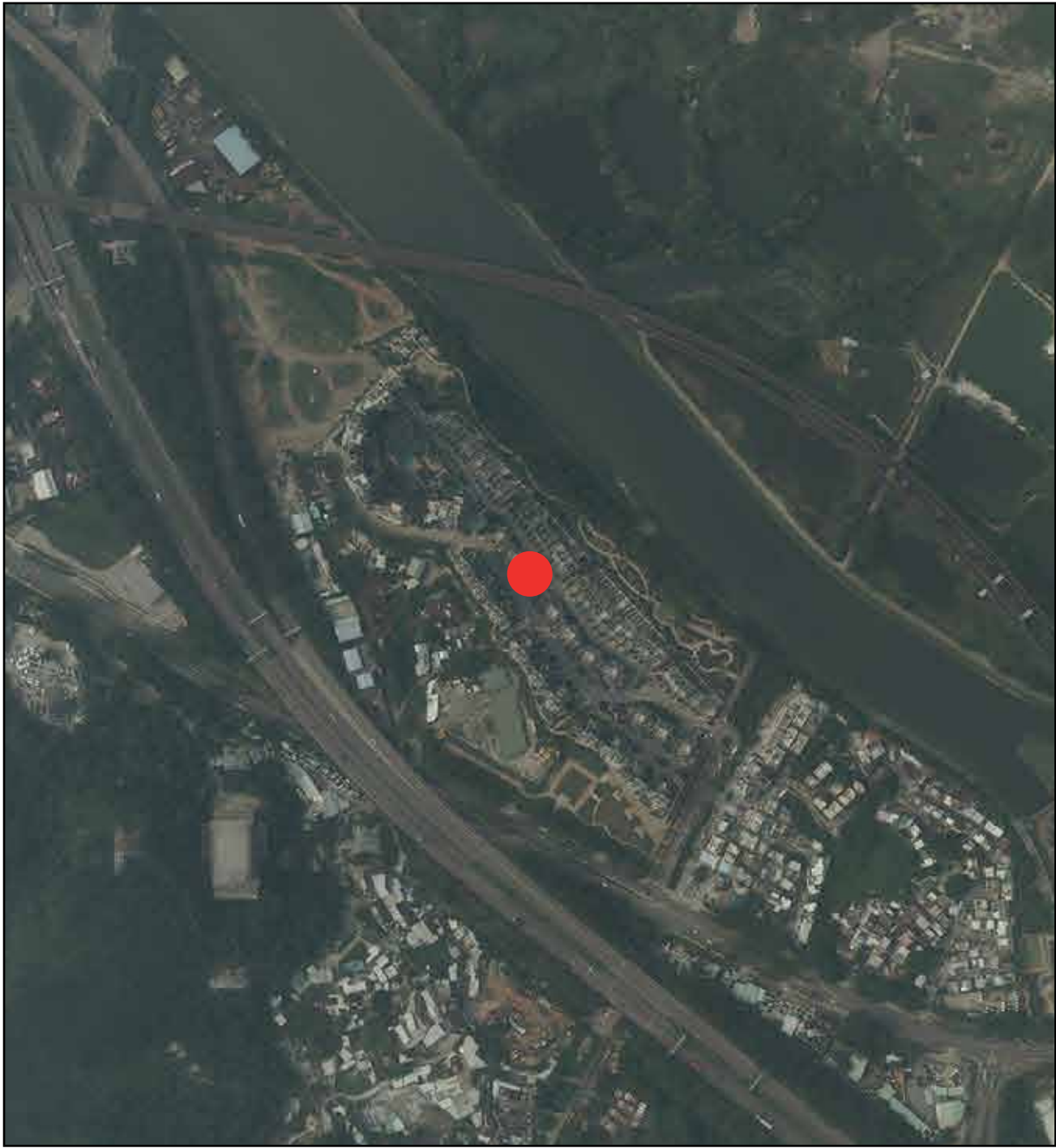



Aerial photograph of the Development 發展項目的鳥瞰照片



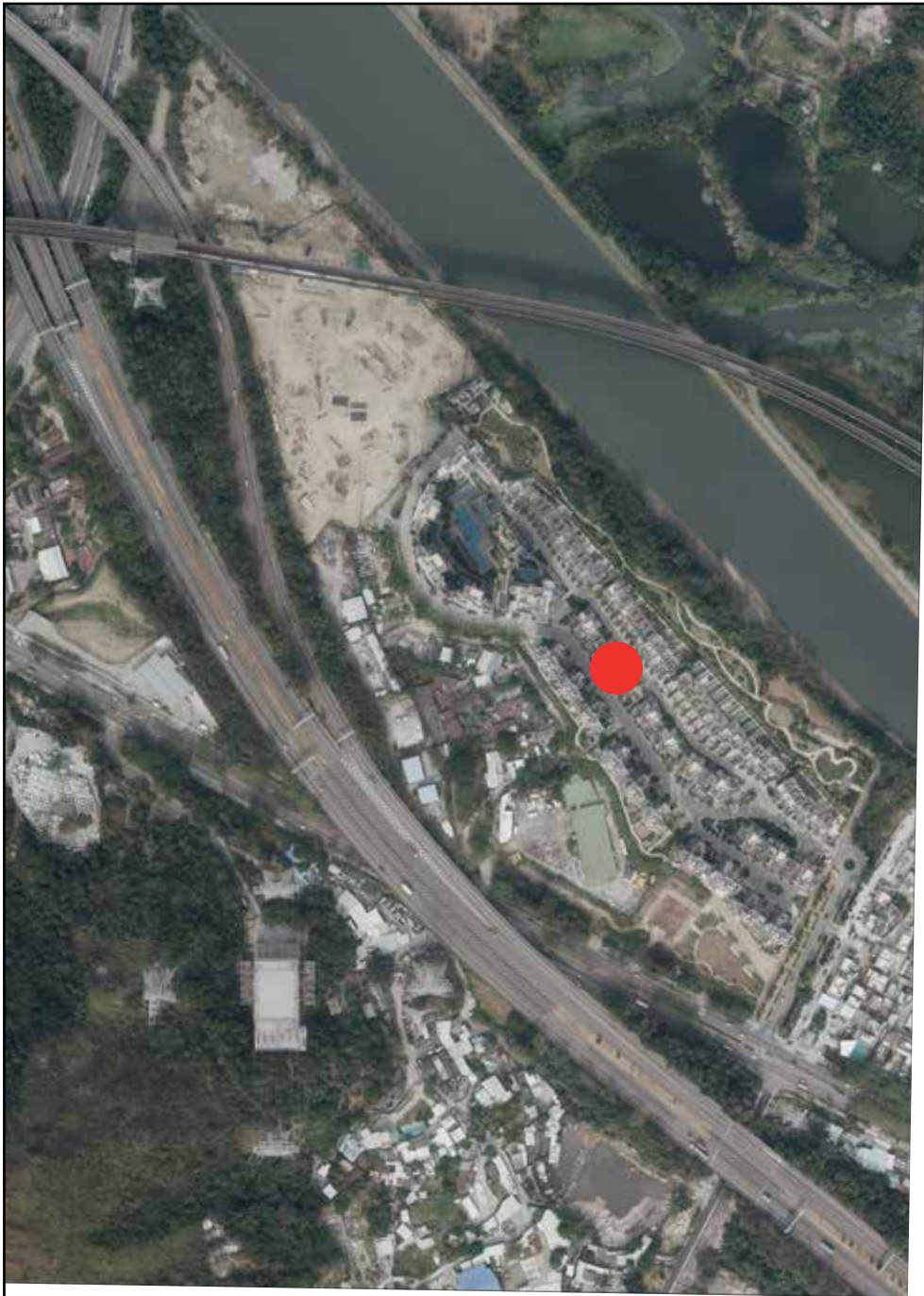
Adopted from part of the aerial photograph taken by the Survey and Mapping Office of Lands Department at a flying height of 6,900 feet, photo No. E023753C, date of flight: 29 April 2017.
摘錄自地政總署測繪處在6,900呎的飛行高度拍攝之鳥瞰照片，照片編號E023753C，飛行日期：2017年4月29日。

 **Location of the Development**
發展項目的位置

Survey and Mapping Office, Lands Department, The Government of HKSAR © Copyright reserved - reproduction by permission only
香港特別行政區政府地政總署測繪處 © 版權所有，未經許可，不得複製。

Note :
The aerial photograph may show more than the area required under the Residential Properties (First-hand Sales) Ordinance due to technical reason that the boundary of the Development is irregular.
備註：
由於發展項目的邊界不規則的技術原因,此鳥瞰照片所顯示的範圍可能超過《一手住宅物業銷售條例》所規定的範圍。

Aerial photograph of the Development 發展項目的鳥瞰照片



This blank area falls outside the coverage of the relevant Aerial Photograph
鳥瞰照片並不覆蓋本空白範圍

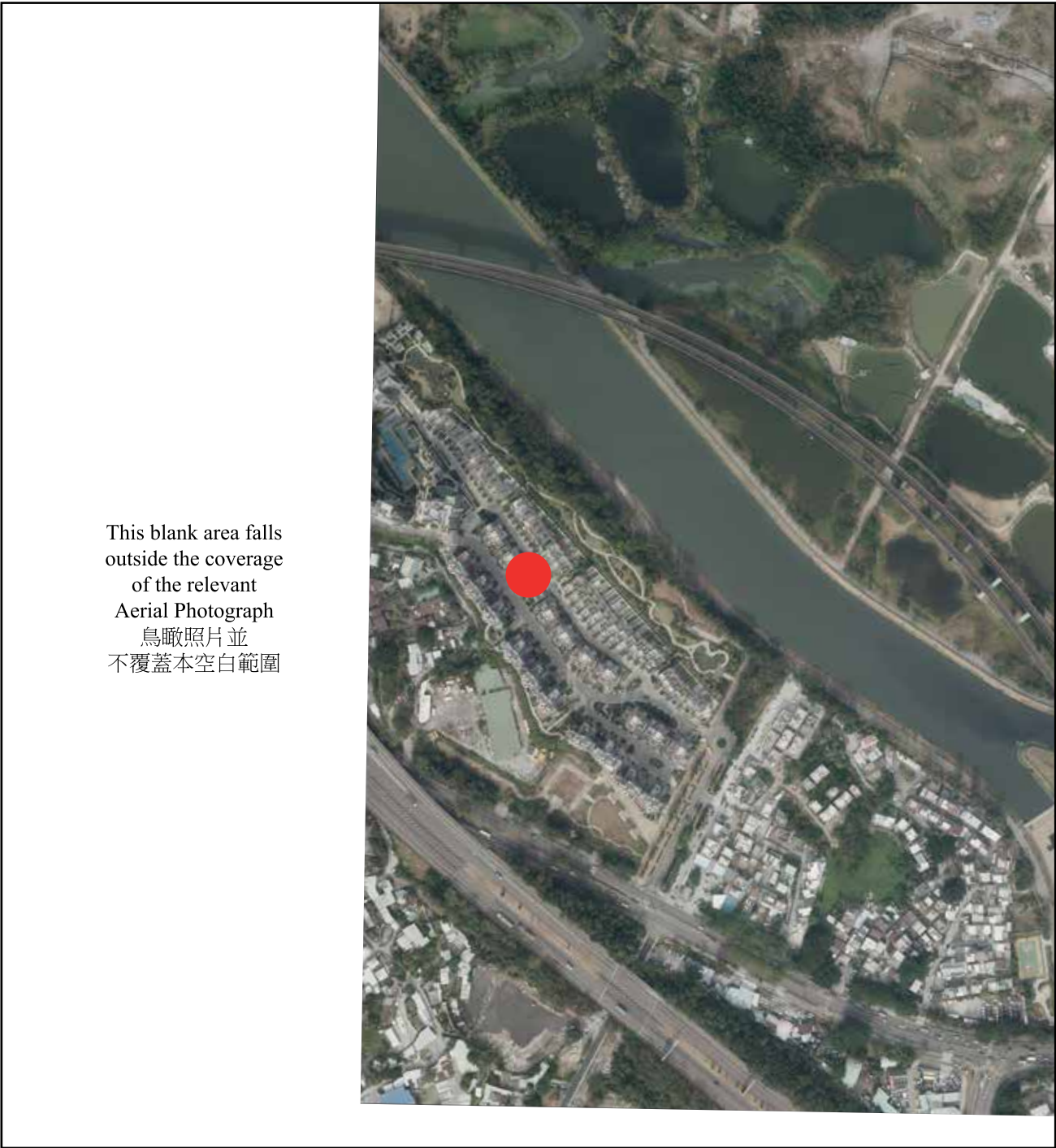
Adopted from part of the aerial photograph taken by the Survey and Mapping Office of Lands Department at a flying height of 6,900 feet, photo No. E032409C, date of flight: 3 January 2018.
摘錄自地政總署測繪處在6,900呎的飛行高度拍攝之鳥瞰照片，照片編號E032409C，飛行日期：2018年1月3日。

● Location of the Development
發展項目的位置

Survey and Mapping Office, Lands Department, The Government of HKSAR © Copyright reserved - reproduction by permission only
香港特別行政區政府地政總署測繪處 © 版權所有，未經許可，不得複製。

Note :
The aerial photograph may show more than the area required under the Residential Properties (First-hand Sales) Ordinance due to technical reason that the boundary of the Development is irregular.
備註：
由於發展項目的邊界不規則的技術原因,此鳥瞰照片所顯示的範圍可能超過《一手住宅物業銷售條例》所規定的範圍。

Aerial photograph of the Development 發展項目的鳥瞰照片



This blank area falls outside the coverage of the relevant Aerial Photograph
鳥瞰照片並不覆蓋本空白範圍

Adopted from part of the aerial photograph taken by the Survey and Mapping Office of Lands Department at a flying height of 6,900 feet, photo No. E032411C, date of flight: 3 January 2018.
摘錄自地政總署測繪處在6,900呎的飛行高度拍攝之鳥瞰照片，照片編號E032411C，飛行日期：2018年1月3日。

Location of the Development 發展項目的位置

Survey and Mapping Office, Lands Department, The Government of HKSAR © Copyright reserved - reproduction by permission only
香港特別行政區政府地政總署測繪處 © 版權所有，未經許可，不得複製。


Note :
The aerial photograph may show more than the area required under the Residential Properties (First-hand Sales) Ordinance due to technical reason that the boundary of the Development is irregular.
備註：
由於發展項目的邊界不規則的技術原因,此鳥瞰照片所顯示的範圍可能超過《一手住宅物業銷售條例》所規定的範圍。

Aerial photograph of the Development 發展項目的鳥瞰照片



This blank area falls
outside the coverage
of the relevant Aerial Photograph
鳥瞰照片並不覆蓋本空白範圍

Adopted from part of the aerial photograph taken by the Survey and Mapping Office of Lands Department at a flying height of 6,900 feet, photo No. E034766C, date of flight: 13 March 2018.
摘錄自地政總署測繪處在6,900呎的飛行高度拍攝之鳥瞰照片，照片編號E034766C，飛行日期：2018年3月13日。

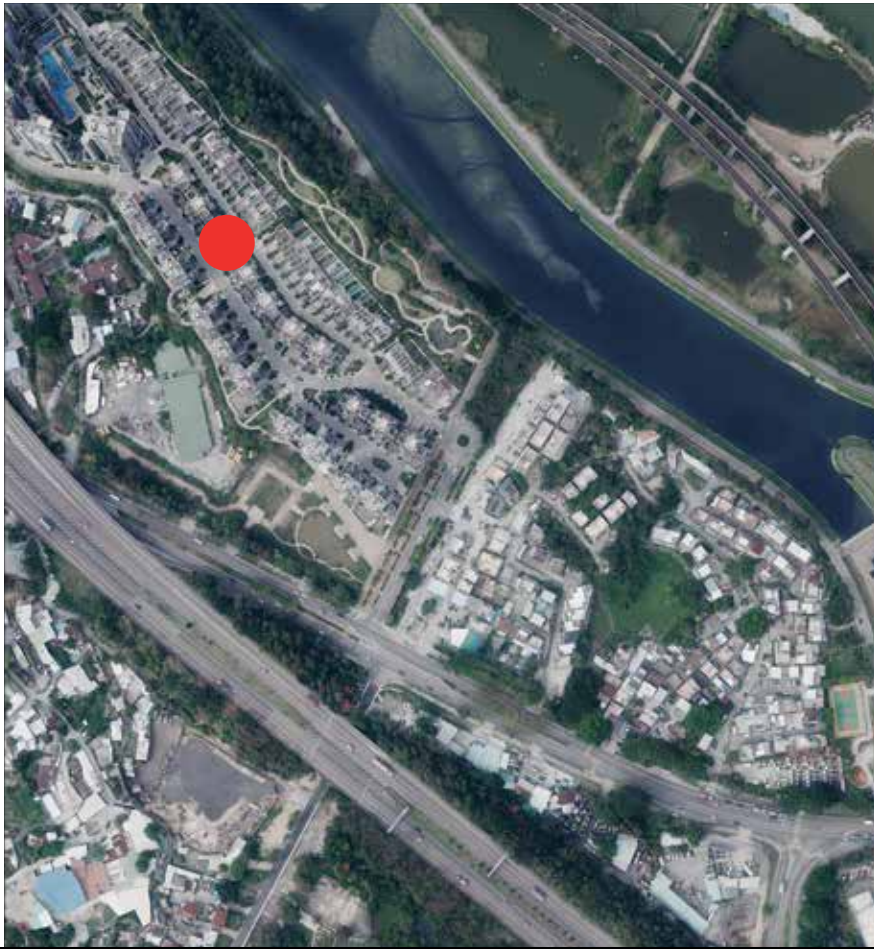
 Location of the Development
發展項目的位置

Survey and Mapping Office, Lands Department, The Government of HKSAR © Copyright reserved - reproduction by permission only
香港特別行政區政府地政總署測繪處 © 版權所有，未經許可，不得複製。


Note :
The aerial photograph may show more than the area required under the Residential Properties (First-hand Sales) Ordinance due to technical reason that the boundary of the Development is irregular.
備註：
由於發展項目的邊界不規則的技術原因,此鳥瞰照片所顯示的範圍可能超過《一手住宅物業銷售條例》所規定的範圍。

Aerial photograph of the Development 發展項目的鳥瞰照片

This blank area falls
outside the coverage
of the relevant Aerial Photograph
鳥瞰照片並不覆蓋本空白範圍



Adopted from part of the aerial photograph taken by the Survey and Mapping Office of Lands Department at a flying height of 6,900 feet, photo No. E035239C, date of flight: 13 March 2018.
摘錄自地政總署測繪處在6,900呎的飛行高度拍攝之鳥瞰照片，照片編號E035239C，飛行日期：2018年3月13日。

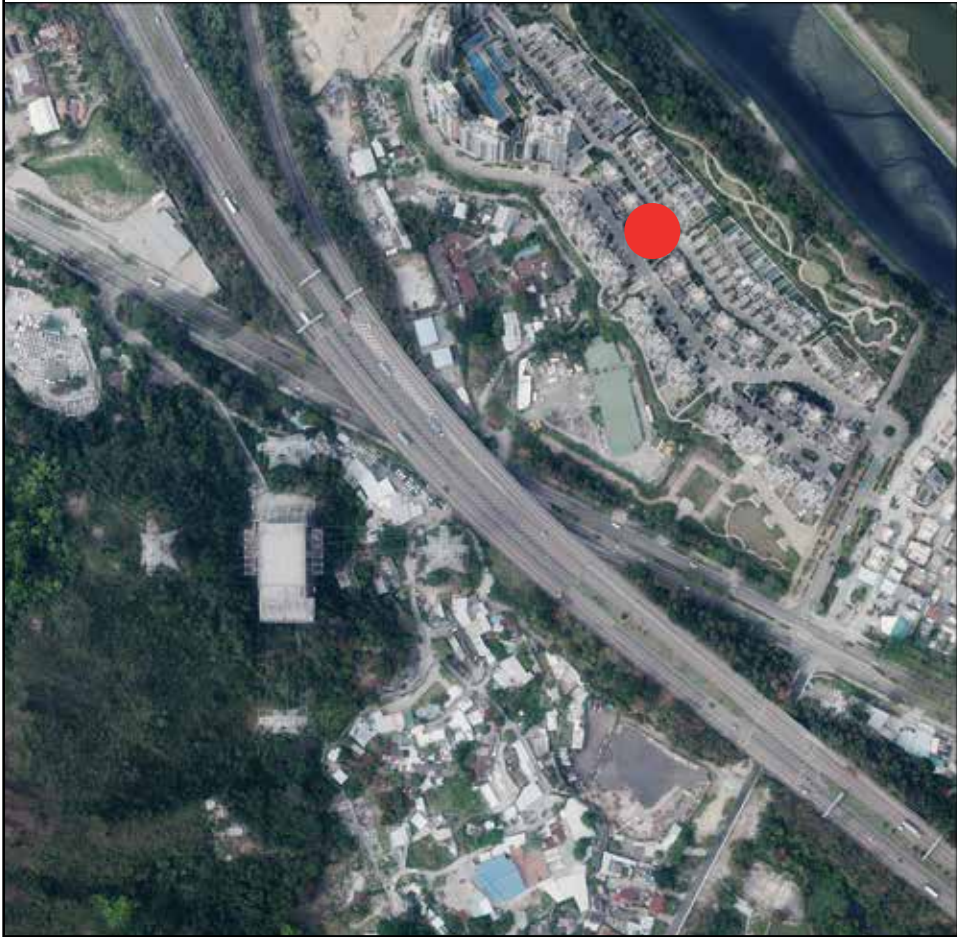
 **Location of the Development**
發展項目的位置

Survey and Mapping Office, Lands Department, The Government of HKSAR © Copyright reserved - reproduction by permission only
香港特別行政區政府地政總署測繪處 © 版權所有，未經許可，不得複製。

Note :
The aerial photograph may show more than the area required under the Residential Properties (First-hand Sales) Ordinance due to technical reason that the boundary of the Development is irregular.
備註：
由於發展項目的邊界不規則的技術原因,此鳥瞰照片所顯示的範圍可能超過《一手住宅物業銷售條例》所規定的範圍。

Aerial photograph of the Development 發展項目的鳥瞰照片

This blank area falls
outside the coverage
of the relevant Aerial Photograph
鳥瞰照片並不覆蓋本空白範圍



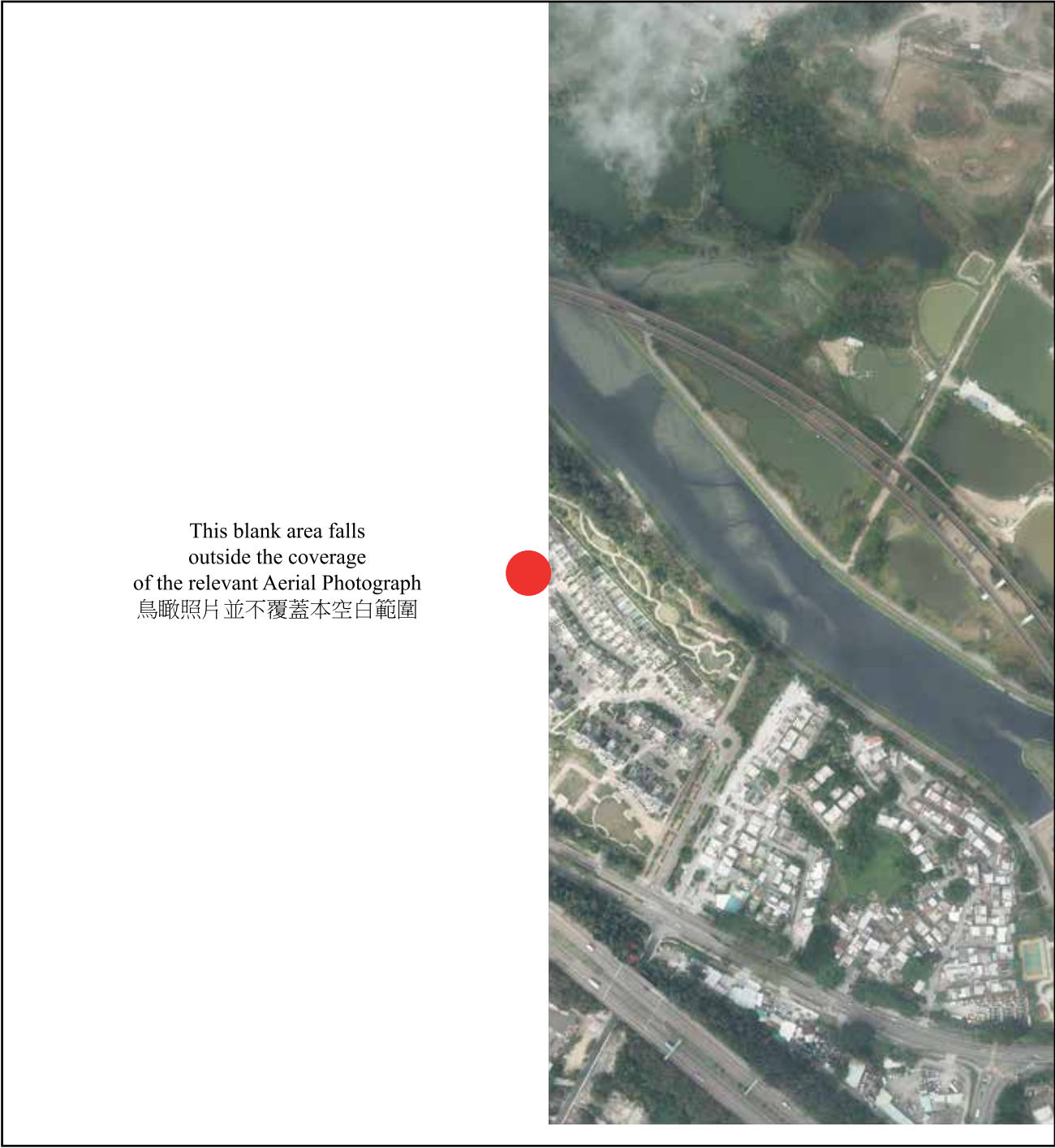
● Location of the Development
發展項目的位置

Survey and Mapping Office, Lands Department, The Government of HKSAR © Copyright reserved - reproduction by permission only
香港特別行政區政府地政總署測繪處 © 版權所有，未經許可，不得複製。

Adopted from part of the aerial photograph taken by the Survey and Mapping Office of Lands Department at a flying height of 6,900 feet, photo No. E035241C, date of flight: 13 March 2018.
摘錄自地政總署測繪處在6,900呎的飛行高度拍攝之鳥瞰照片，照片編號E035241C，飛行日期：2018年3月13日。

Note :
The aerial photograph may show more than the area required under the Residential Properties (First-hand Sales) Ordinance due to technical reason that the boundary of the Development is irregular.
備註：
由於發展項目的邊界不規則的技術原因,此鳥瞰照片所顯示的範圍可能超過《一手住宅物業銷售條例》所規定的範圍。

Aerial photograph of the Development 發展項目的鳥瞰照片



This blank area falls outside the coverage of the relevant Aerial Photograph
鳥瞰照片並不覆蓋本空白範圍

Adopted from part of the aerial photograph taken by the Survey and Mapping Office of Lands Department at a flying height of 6,900 feet, photo No. E034765C, date of flight: 13 March 2018.
摘錄自地政總署測繪處在6,900呎的飛行高度拍攝之鳥瞰照片，照片編號E034765C，飛行日期：2018年3月13日。

Location of the Development 發展項目的位置

Survey and Mapping Office, Lands Department, The Government of HKSAR © Copyright reserved - reproduction by permission only
香港特別行政區政府地政總署測繪處 © 版權所有，未經許可，不得複製。

Note :
The aerial photograph may show more than the area required under the Residential Properties (First-hand Sales) Ordinance due to technical reason that the boundary of the Development is irregular.
備註：
由於發展項目的邊界不規則的技術原因,此鳥瞰照片所顯示的範圍可能超過《一手住宅物業銷售條例》所規定的範圍。