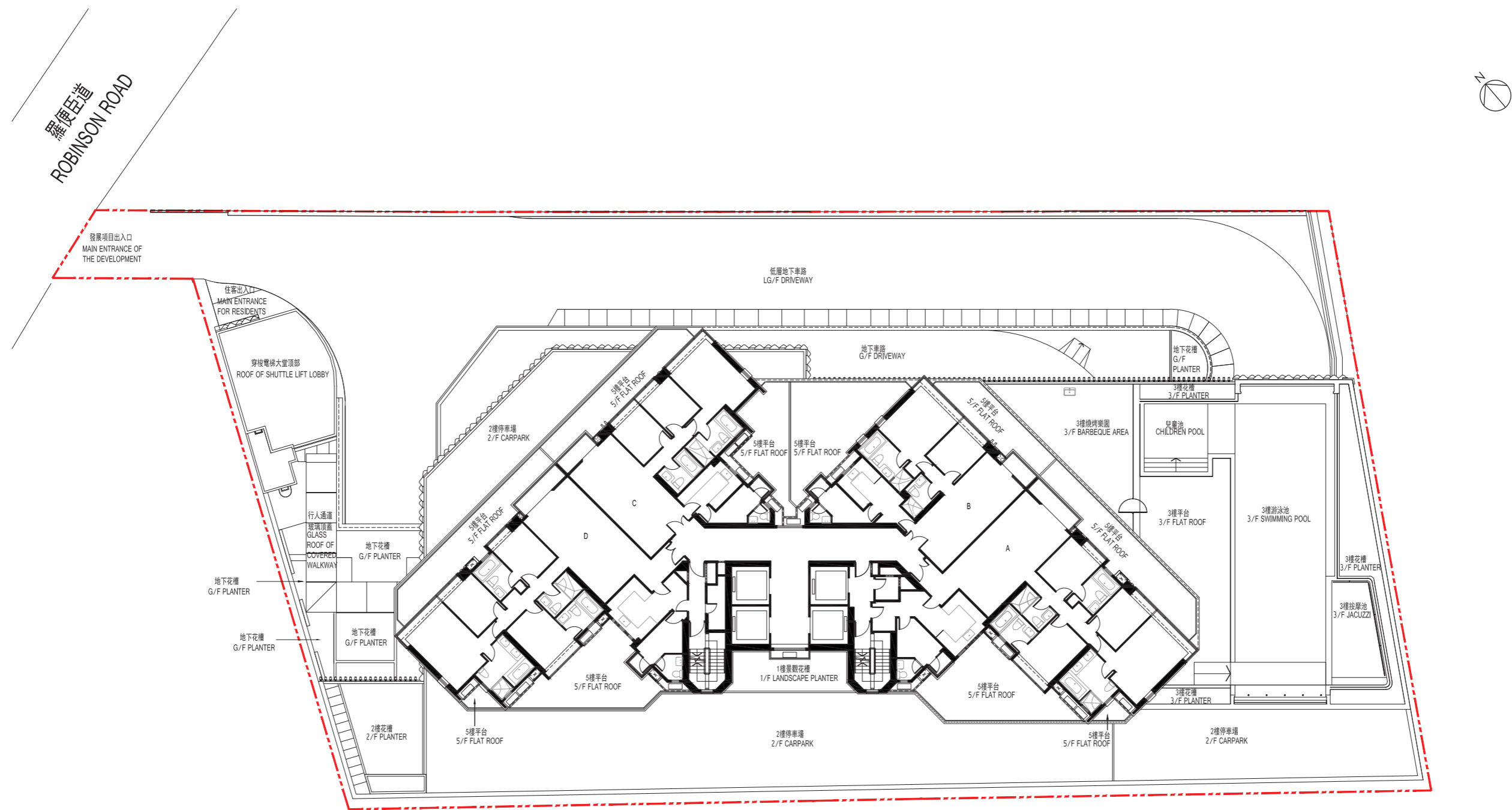



# 9. 發展項目的布局圖 LAYOUT PLAN OF THE DEVELOPMENT



 發展項目的界線  
Site boundary of the development

比例尺 SCALE :  0M (米) 20M (米)

由發展項目的認可人士提供的該等建築物及設施的預計落成日期為2018年12月17日。  
The estimated date of completion of these buildings and facilities as provided by the authorized person for the development is 17th December 2018.