

FLOOR PLANS OF RESIDENTIAL PROPERTIES IN THE DEVELOPMENT

發展項目的住宅物業的樓面平面圖

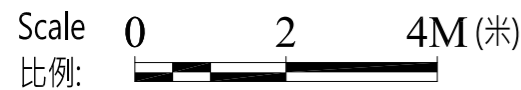
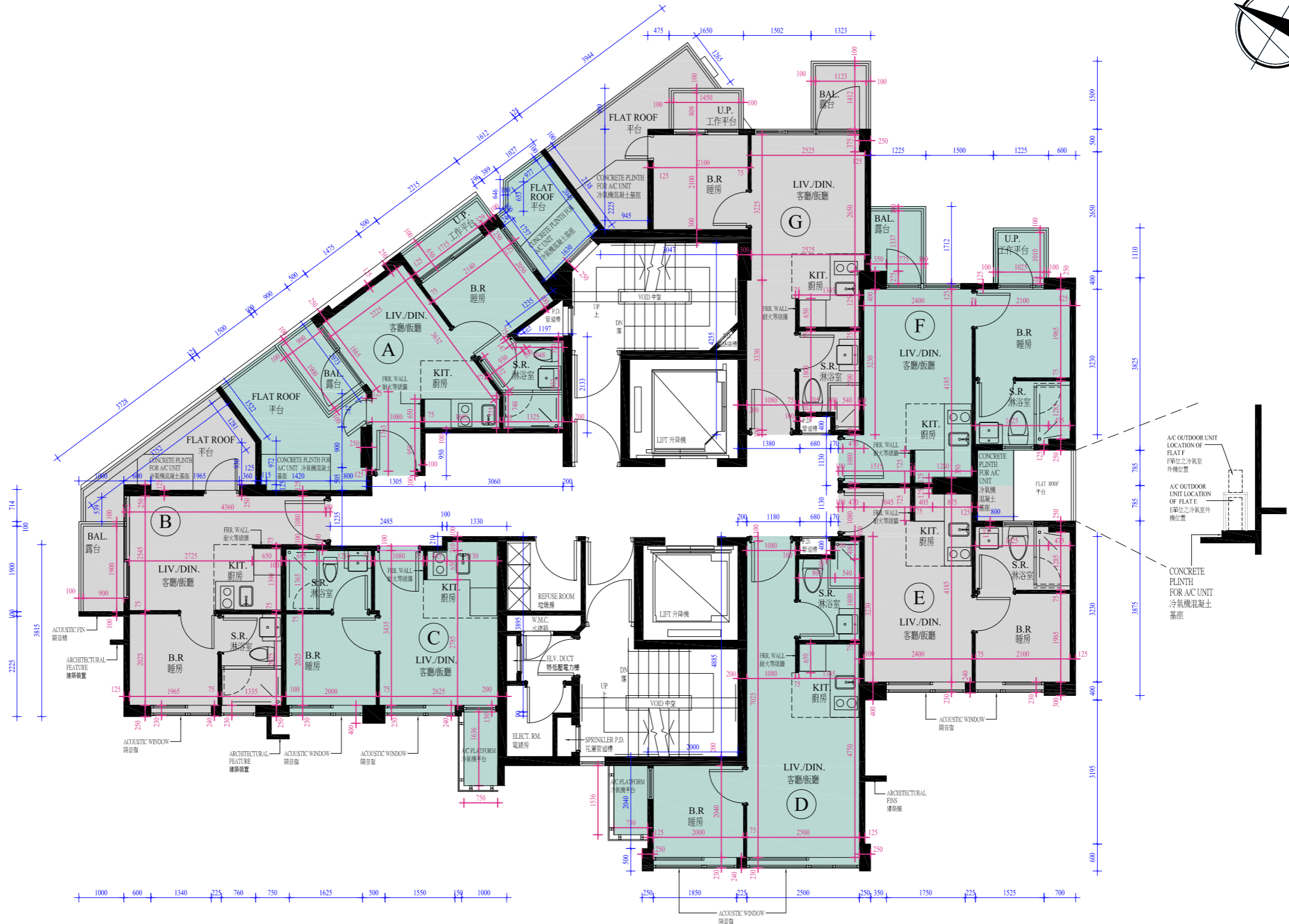
5/F Floor Plan 五樓樓面平面圖

Note:

1. The dimensions on the floor plans are all structural dimensions in millimetre.
2. As provided in the approved building plans for the Development, the floor-to-floor height of each residential property on 5/F of the Development is 3150mm.
3. As provided in the approved building plans for the Development, the thicknesses of the floor slabs (excluding plaster) of each residential property on 5/F of the Development is 125mm.
4. The internal areas of the residential properties on the upper floors will generally be slightly larger than those on the lower floors because of the reducing thickness of the structural walls on the upper floors.

附註:

1. 樓面平面圖所列之數字為以毫米標示之建築結構尺寸。
2. 按發展項目的經批准的建築圖則所規定者，發展項目5樓每個住宅物業的層與層之間的高度為3150毫米。
3. 按發展項目的經批准的建築圖則所規定者，發展項目5樓每個住宅物業的樓板(不包括灰泥)的厚度為125毫米。
4. 因住宅物業的較高樓層的結構牆的厚度遞減，較高樓層的內部面積，一般比較低樓層的內部面積稍大。



Legends of Floor Plan 樓面平面圖圖例:

A/C PLATFORM = Air-conditioning Platform 冷氣機平台 ACOUSTIC FIN = 隔音簷 ACOUSTIC WINDOW = 隔音窗 ARCHITECTURAL FEATURE = 建築裝置 ARCHITECTURAL FIN = 建築簷 B.R. = Bedroom 睡房 BAL. = Balcony 露台 CONCRETE PLINTH FOR A/C UNIT = Concrete Plinth for Air-conditioning Unit 冷氣機混凝土基座 DN = Down 落 ELECT. RM. = Electric Meter Room 電錶房 ELV. DUCT = Extra-low Voltage Duct 特低壓電力槽 FLAT ROOF = 平台 FRR. WALL = Fire Resistant Rating Wall 耐火等級牆 KIT. = Kitchen 廚房 LIFT = 升降機 LIV./DIN. = Living Room/Dining Room 客廳/飯廳 P.D. = Pipe Duct 管道槽 REFUSE ROOM = 垃圾房 S.R. = Shower Room 淋浴室 SPRINKLER P.D. = Sprinkler Pipe Duct 花灑管道槽 T.D. = Telephone Duct 電話線槽 UP = 上 U.P. = Utility Platform 工作平台 VOID = 中空 W.M.C. = Water Meter Cabinet 水錶箱

FLOOR PLANS OF RESIDENTIAL PROPERTIES IN THE DEVELOPMENT

發展項目的住宅物業的樓面平面圖

6/F - 12/F, 15/F - 22/F Floor Plan

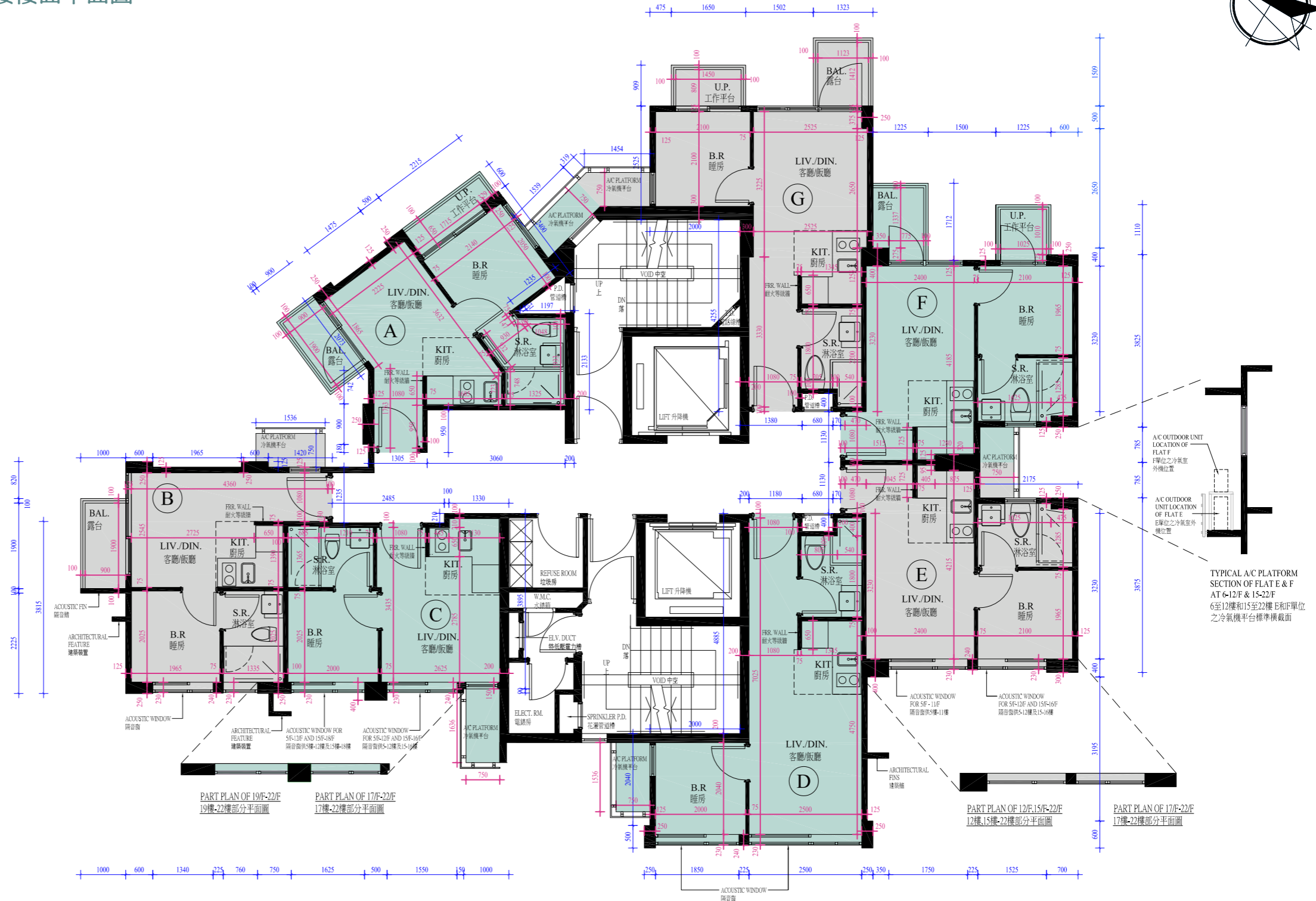
六樓至十二樓、十五樓至二十二樓樓面平面圖

Note:

1. The dimensions on the floor plans are all structural dimensions in millimetre.
2. As provided in the approved building plans for the Development, the floor-to-floor height of each residential property on 6/F-12/F, 15/F - 22/F of the Development is 3150mm.
3. As provided in the approved building plans for the Development, the thicknesses of the floor slabs (excluding plaster) of each residential property on 6/F-12/F, 15/F-22/F of the Development is 125mm.
4. The internal areas of the residential properties on the upper floors will generally be slightly larger than those on the lower floors because of the reducing thickness of the structural walls on the upper floors.

附註:

1. 樓面平面圖所列之數字為以毫米標示之建築結構尺寸。
2. 按發展項目的經批准的建築圖則所規定者，發展項目6樓至12樓、15樓至22樓每個住宅物業的層與層之間的高度為3150毫米。
3. 按發展項目的經批准的建築圖則所規定者，發展項目6樓至12樓、15樓至22樓每個住宅物業的樓板(不包括灰泥)的厚度為125毫米。
4. 因住宅物業的較高樓層的結構牆的厚度遞減，較高樓層的內部面積，一般比較低樓層的內部面積稍大。



Legends of Floor Plan 樓面平面圖圖例:

A/C PLATFORM = Air-conditioning Platform 冷氣機平台 ACOUSTIC FIN = 隔音蟻 ARCHITECTURAL FEATURE = 建築裝置 ARCHITECTURAL FIN = 建築蟻 B.R. = Bedroom 睡房 BAL. = Balcony 露台 DN = Down 落 ELECT. RM. = Electric Meter Room 電錶房 ELV. DUCT = Extra-low Voltage Duct 特低壓電力槽 FRR. WALL = Fire Resistant Rating Wall 耐火等級牆 KIT. = Kitchen 廚房 LIFT = 升降機 LIV./DIN. = Living Room/Dining Room 客廳/飯廳 P.D. = Pipe Duct 管道槽 REFUSE ROOM = 垃圾房 S.R. = Shower Room 淋浴室 SPRINKLER P.D. = Sprinkler Pipe Duct 花灑管道槽 T.D. = Telephone Duct 電話線槽 UP = 上 U.P. = Utility Platform 工作平台 VOID = 中空 W.M.C. = Water Meter Cabinet 水錶箱

FLOOR PLANS OF RESIDENTIAL PROPERTIES IN THE DEVELOPMENT

發展項目的住宅物業的樓面平面圖

23/F Floor Plan 二十三樓樓面平面圖

Note:

- The dimensions on the floor plans are all structural dimensions in millimetre.
- As provided in the approved building plans for the Development, the floor-to-floor height of each residential property on 23/F of the Development is 3150mm.
- As provided in the approved building plans for the Development, the thicknesses of the floor slabs (excluding plaster) of each residential property on 23/F of the Development is 125mm.
- The internal areas of the residential properties on the upper floors will generally be slightly larger than those on the lower floors because of the reducing thickness of the structural walls on the upper floors.

附註:

- 樓面平面圖所列之數字為以毫米標示之建築結構尺寸。
- 按發展項目的經批准的建築圖則所規定者，發展項目23樓每個住宅物業的層與層之間的高度為3150毫米。
- 按發展項目的經批准的建築圖則所規定者，發展項目23樓每個住宅物業的樓板(不包括灰泥)的厚度為125毫米。
- 因住宅物業的較高樓層的結構牆的厚度遞減，較高樓層的內部面積，一般比較低樓層的內部面積稍大。



Legends of Floor Plan 樓面平面圖圖例:

A/C PLATFORM = Air-conditioning Platform 冷氣機平台 ARCHITECTURAL FEATURE = 建築裝置 ARCHITECTURAL FINIS = 建築簷 B.R. = Bedroom 睡房 B.R. 1 = Bedroom 1 睡房1 B.R. 2 = Bedroom 2 睡房2 DN = Down 落 ELECT. RM. = Electric Meter Room 電錶房 ELV. DUCT = Extra-low Voltage Duct 特低壓電力槽 FLAT ROOF = 平台 FRR. WALL = Fire Resistant Rating Wall 耐火等級牆 INACCESSIBLE PITCHED ROOF ABOVE BAL. = Inaccessible Pitched Roof above Balcony 於露台上的不可進入之斜頂 INACCESSIBLE PITCHED ROOF ABOVE U.P. = Inaccessible Pitched Roof above Utility Platform 於工作平台上的不可進入之斜頂 KIT. = Kitchen 廚房 LIFT = 升降機 LIV./DIN. = Living Room/Dining Room 客廳/飯廳 P.D. = Pipe Duct 管道槽 REFUSE ROOM = 垃圾房 S.R. = Shower Room 淋浴室 SPRINKLER P.D. = Sprinkler Pipe Duct 花灑管道槽 T.D. = Telephone Duct 電話線槽 UP = 上 VOID = 中空 W.M.C. = Water Meter Cabinet 水錶箱

FLOOR PLANS OF RESIDENTIAL PROPERTIES IN THE DEVELOPMENT

發展項目的住宅物業的樓面平面圖

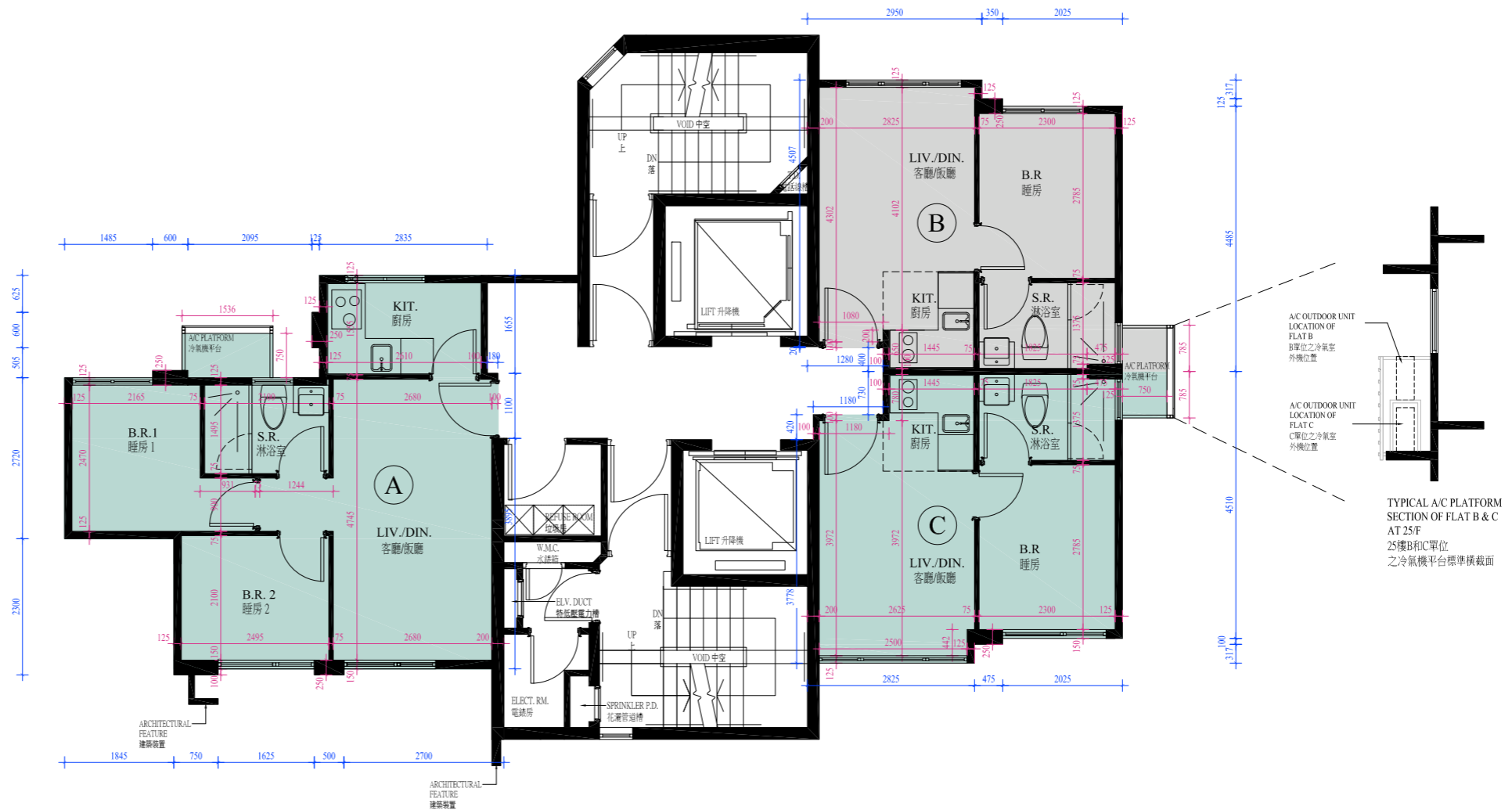
25/F Floor Plan 二十五樓樓面平面圖

Note:

1. The dimensions on the floor plans are all structural dimensions in millimetre.
2. As provided in the approved building plans for the Development, the floor-to-floor height of each residential property on 25/F of the Development is 3150mm.
3. As provided in the approved building plans for the Development, the thicknesses of the floor slabs (excluding plaster) of each residential property on 25/F of the Development is 125mm.
4. The internal areas of the residential properties on the upper floors will generally be slightly larger than those on the lower floors because of the reducing thickness of the structural walls on the upper floors.

附註:

1. 樓面平面圖所列之數字為以毫米標示之建築結構尺寸。
2. 按發展項目的經批准的建築圖則所規定者，發展項目25樓每個住宅物業的層與層之間的高度為3150毫米。
3. 按發展項目的經批准的建築圖則所規定者，發展項目25樓每個住宅物業的樓板(不包括灰泥)的厚度為125毫米。
4. 因住宅物業的較高樓層的結構牆的厚度遞減，較高樓層的内部面積，一般比較低樓層的内部面積稍大。



Scale 0 2 4M(米)
比例:

Legends of Floor Plan 樓面平面圖圖例:

A/C PLATFORM = Air-conditioning Platform 冷氣機平台 ARCHITECTURAL FEATURE = 建築裝置 B.R. = Bedroom 睡房 B.R. 1 = Bedroom 1 睡房1 B.R. 2 = Bedroom 2 睡房2 DN = Down 落 ELECT. RM. = Electric Meter Room 電錶房 ELV. DUCT = Extra-low Voltage Duct 特低壓電力槽 FRR. WALL = Fire Resistant Rating Wall 耐火等級牆 KIT. = Kitchen 廚房 LIFT = 升降機 LIV./DIN. = Living Room/Dining Room 客廳/飯廳 P.D. = Pipe Duct 管道槽 REFUSE ROOM = 垃圾房 S.R. = Shower Room 淋浴室 SPRINKLER P.D. = Sprinkler Pipe Duct 花灑管道槽 T.D. = Telephone Duct 電話線槽 UP = 上 VOID = 中空 W.M.C. = Water Meter Cabinet 水錶箱

FLOOR PLANS OF RESIDENTIAL PROPERTIES IN THE DEVELOPMENT

發展項目的住宅物業的樓面平面圖

Roof Floor Floor Plan

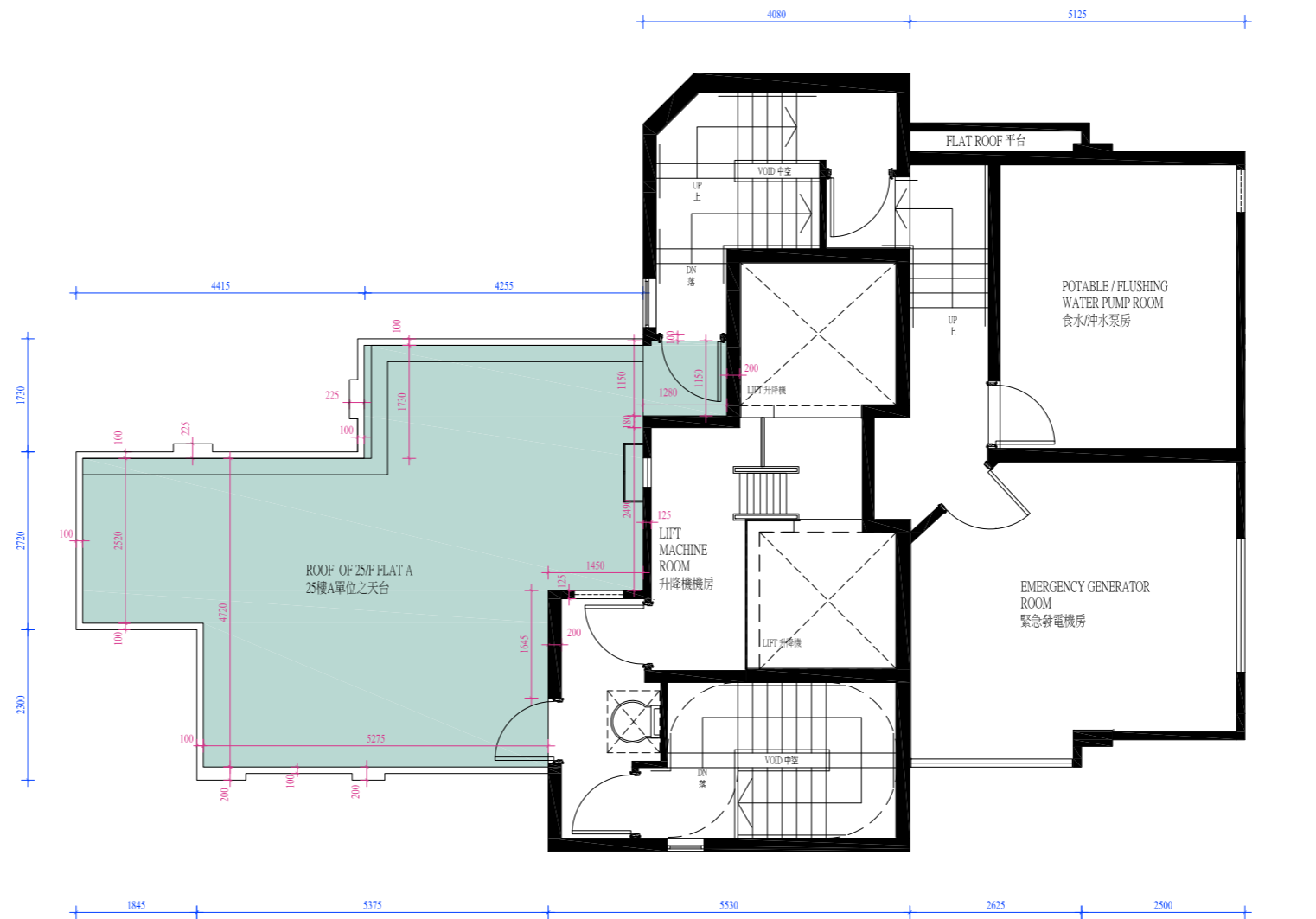
天台樓面平面圖

Note:

1. The dimensions on the floor plans are all structural dimensions in millimetre.
2. As provided in the approved building plans for the Development, the floor-to-floor height of each residential property on Roof Floor of the Development: Not applicable.
3. As provided in the approved building plans for the Development, the thicknesses of the floor slabs (excluding plaster) of each residential property on Roof Floor of the Development: Not applicable.
4. The internal areas of the residential properties on the upper floors will generally be slightly larger than those on the lower floors because of the reducing thickness of the structural walls on the upper floors.

附註:

1. 樓面平面圖所列之數字為以毫米標示之建築結構尺寸。
2. 按發展項目的經批准的建築圖則所規定者，發展項目天台每個住宅單位的層與層之間的高度：不適用。
3. 按發展項目的經批准的建築圖則所規定者，發展項目天台每個住宅物業的樓板(不包括灰泥)的厚度：不適用。
4. 因住宅物業的較高樓層的結構牆的厚度遞減，較高樓層的內部面積，一般比較低樓層的內部面積稍大。



Scale 0 2 4M(米)
比例:

Legends of Floor Plan 樓面平面圖圖例:

DN = Down 落 EMERGENCY GENERATOR ROOM = 緊急發電機房 FLAT ROOF = 平台 LIFT = 升降機 LIFT MACHINE ROOM = 升降機機房 POTABLE/FLUSHING WATER PUMP ROOM = 食水沖水泵房 UP = 上 VOID = 中空