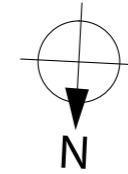
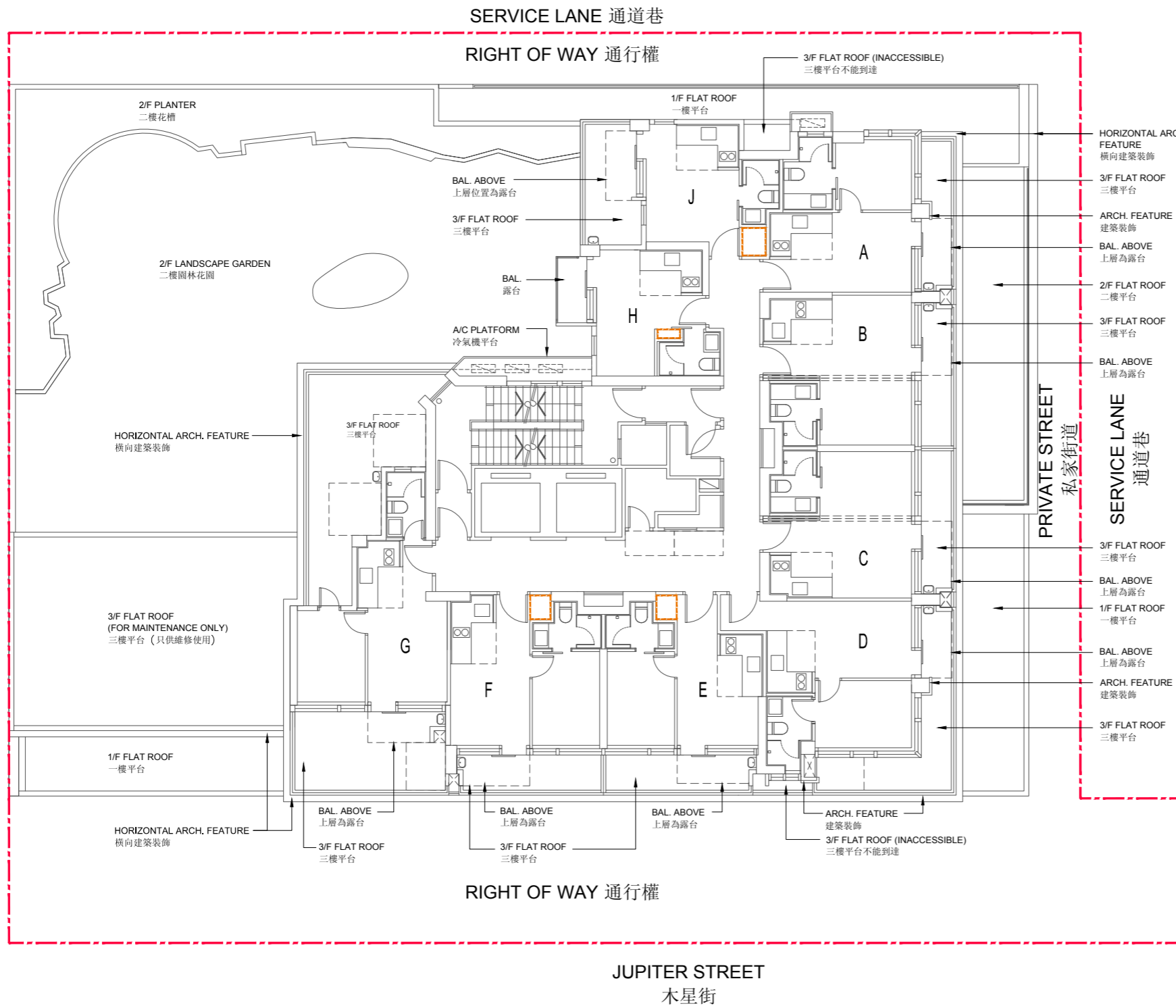


# 9. LAYOUT PLAN OF THE DEVELOPMENT 發展項目的布局圖

ADJOINING BUILDING  
毗鄰建築物



The estimated date of completion of these buildings and facilities, as provided by the authorized person for the development is 31st August 2020.

由發展項目的認可人士提供的該等建築物及設施的預計落成日期為2020年8月31日。

- Boundary of the Development  
發展項目的界線
- A/C PLATFORM = Air-conditioner Platform 冷氣機平台
- ARCH. FEATURE = Architectural Feature 建築裝飾
- BAL. = Balcony 露台
- = Built-in fittings provided in the flats  
隨樓附送嵌入式裝置

SCALE 比例: 0M(米) 5M(米)