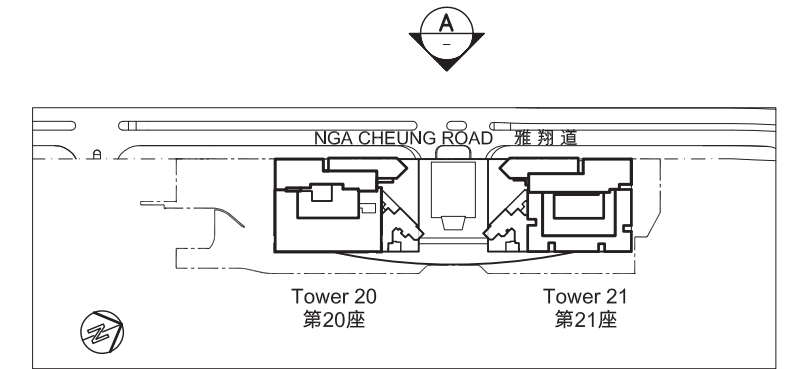
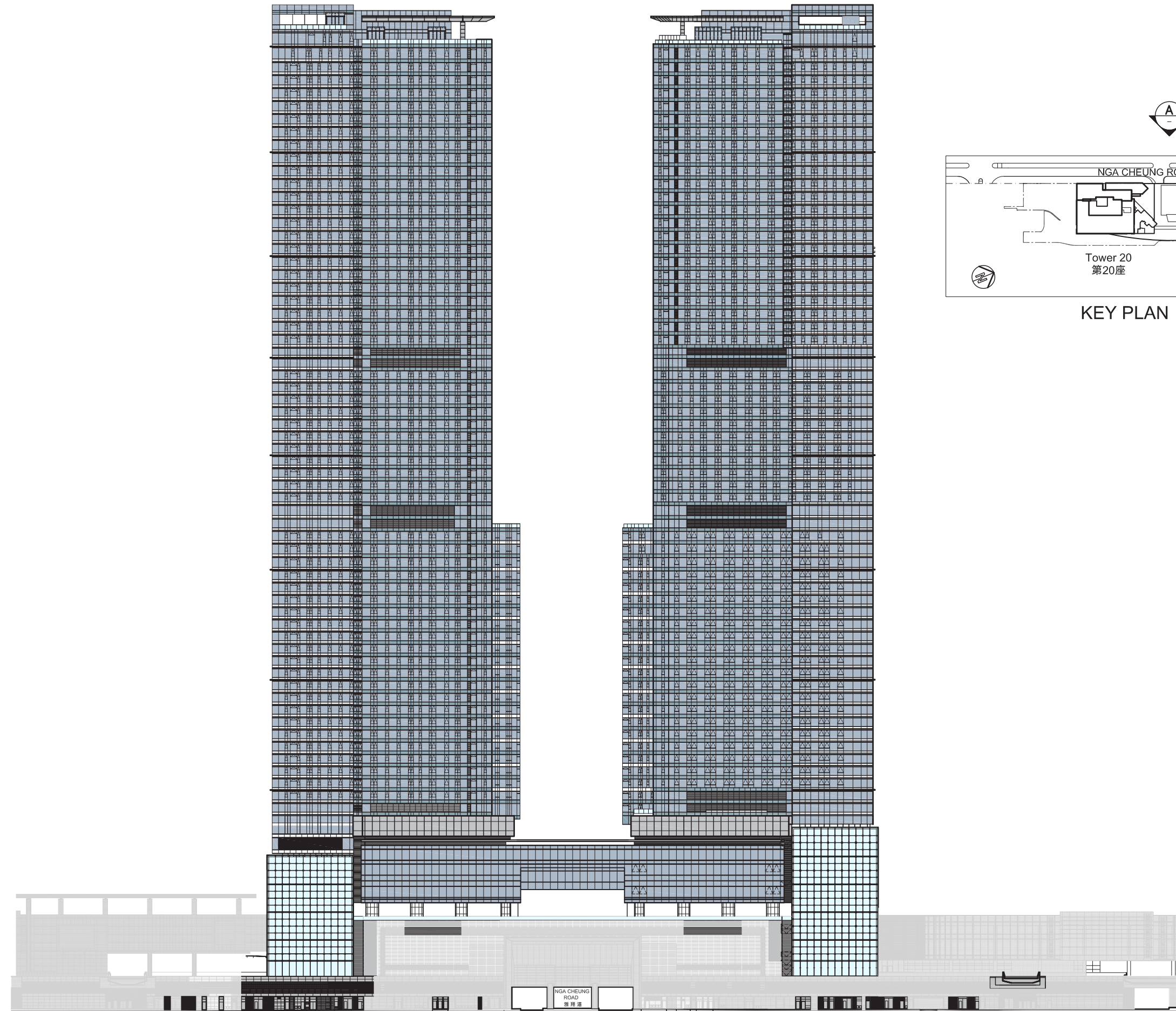


# Elevation plan

立面圖

Tower 21 第21座

Tower 20 第20座



KEY PLAN 索引圖

Authorized person for the Phase has certified that the elevations shown on this plan:-

- (a) are prepared on the basis of the approved building plans for the Phase as of 15 March 2007;
- (b) are in general accordance with the outward appearance of the Phase.

期數的認可人士已證明本圖顯示的立面：

- (a) 以2007年3月15日的情況為準的期數的經批准的建築圖則為基礎擬備；
- (b) 大致上與期數的外觀一致。

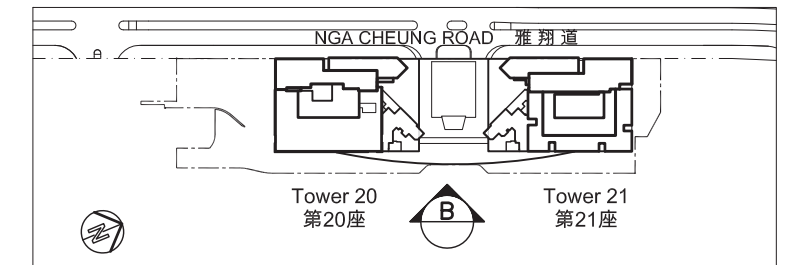
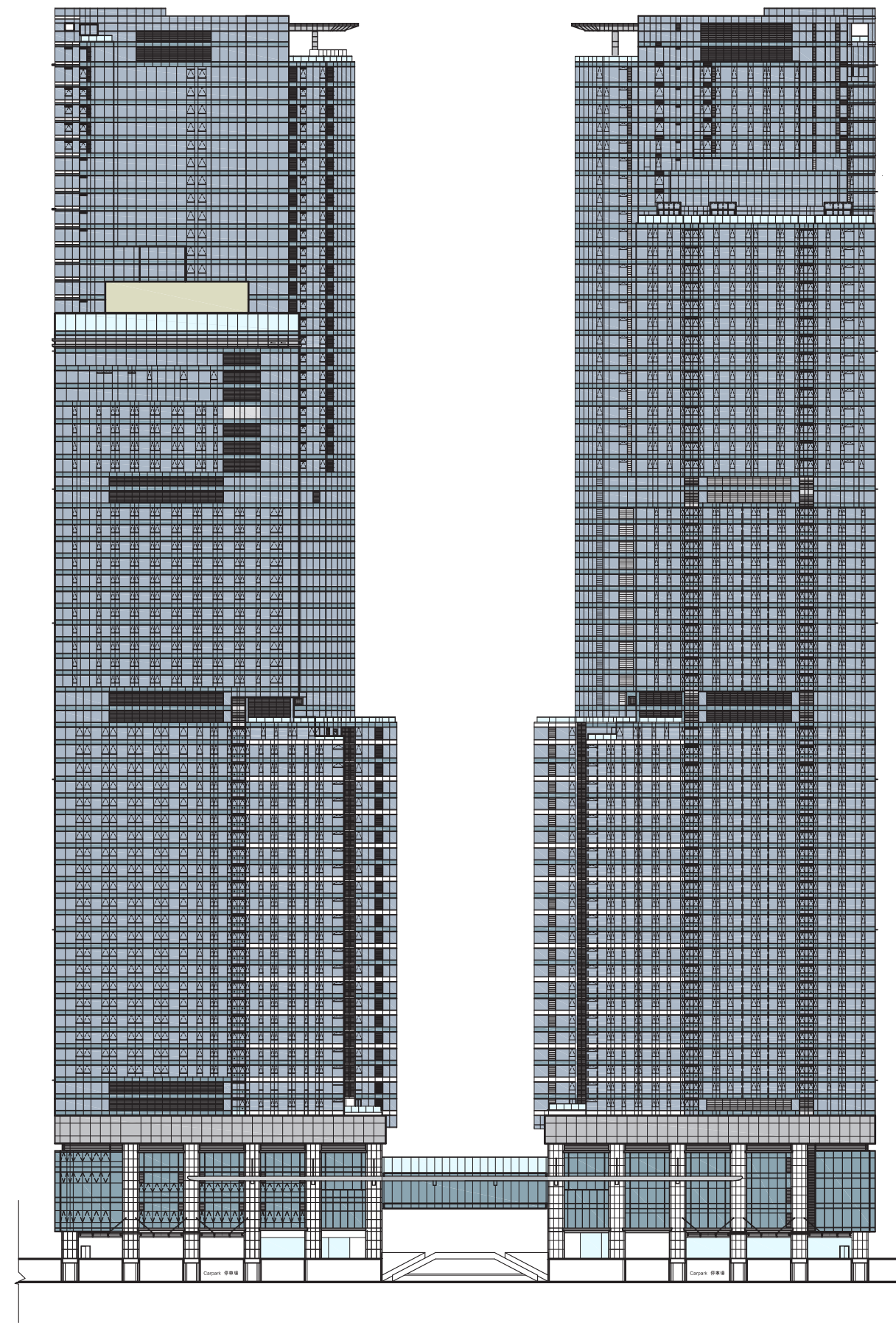
A Elevation 立面圖

# Elevation plan

立面圖

Tower 20 第20座

Tower 21 第21座



KEY PLAN 索引圖

Authorized person for the Phase has certified that the elevations shown on this plan:-

(a) are prepared on the basis of the approved building plans for the Phase as of 15 March 2007;

(b) are in general accordance with the outward appearance of the Phase.

期數的認可人士已證明本圖顯示的立面：

(a) 以2007年3月15日的情況為準的期數的經批准的建築圖則為基礎擬備；

(b) 大致上與期數的外觀一致。

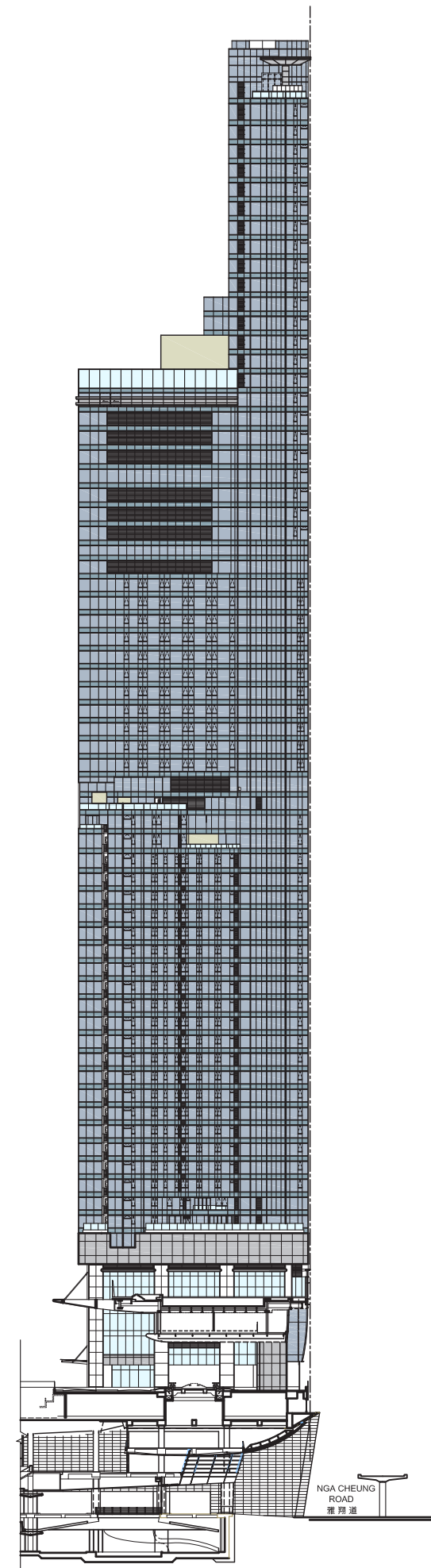
B Elevation 立面圖



# Elevation plan

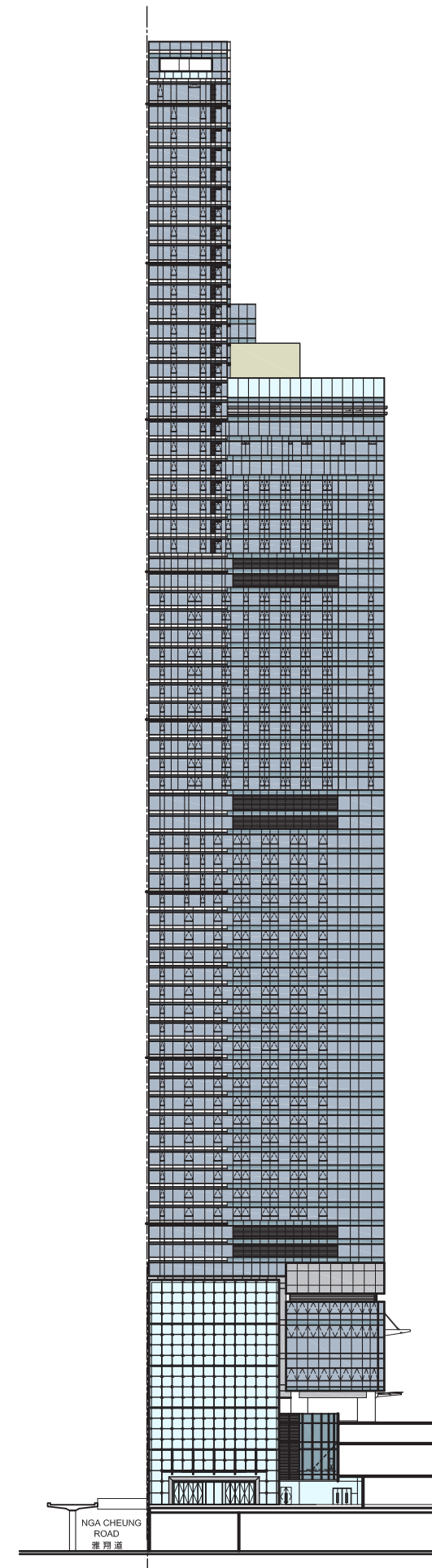
立面圖

Tower 20 第20座

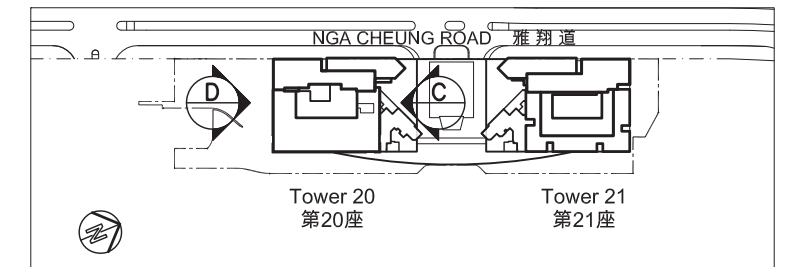


C Elevation 立面圖

Tower 20 第20座



D Elevation 立面圖



KEY PLAN 索引圖

Authorized person for the Phase has certified that the elevations shown on this plan:-

(a) are prepared on the basis of the approved building plans for the Phase as of 15 March 2007;

(b) are in general accordance with the outward appearance of the Phase.

期數的認可人士已證明本圖顯示的立面：

(a) 以2007年3月15日的情況為準的期數的經批准的建築圖則為基礎擬備；

(b) 大致上與期數的外觀一致。

# Elevation plan

立面圖

Authorized person for the Phase has certified that the elevations shown on this plan:-

(a) are prepared on the basis of the approved building plans for the Phase as of 30 November 2007;

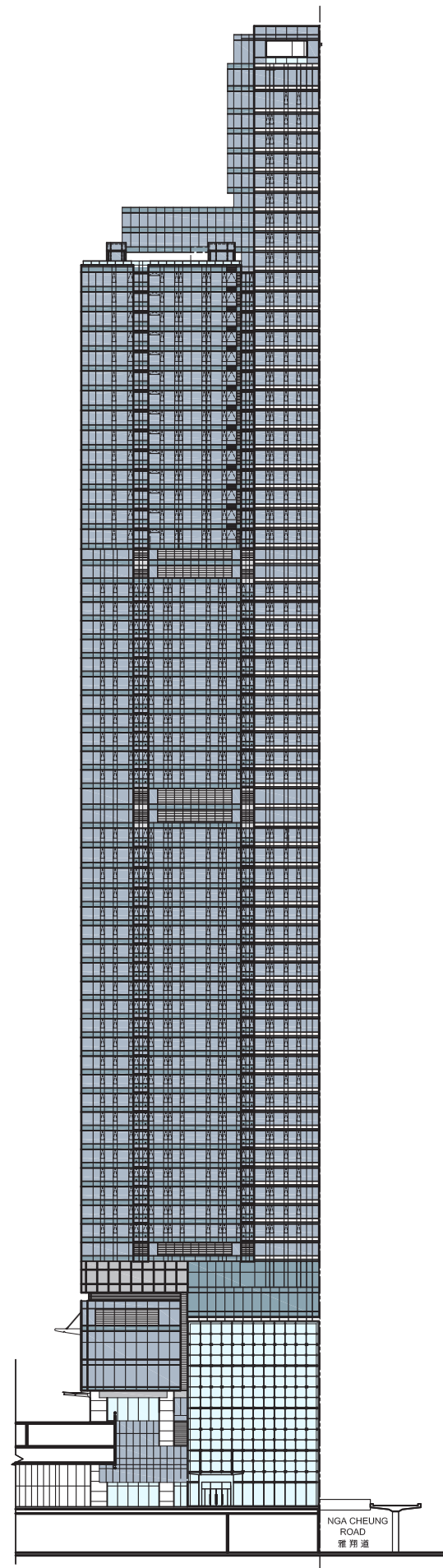
(b) are in general accordance with the outward appearance of the Phase.

期數的認可人士已證明本圖顯示的立面：

(a) 以2007年11月30日的情況為準的期數的經批准的建築圖則為基礎擬備；

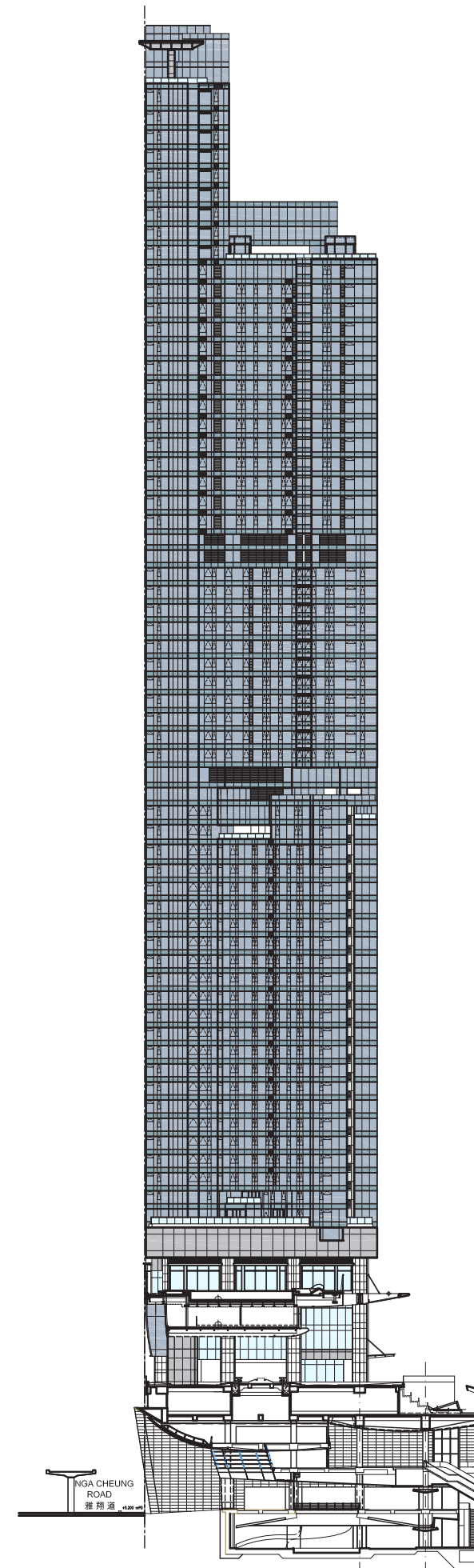
(b) 大致上與期數的外觀一致。

Tower 21 第21座

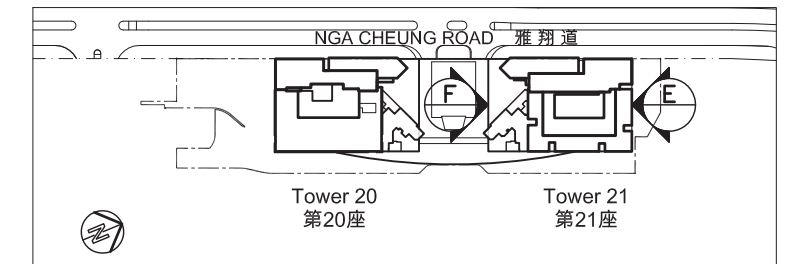


(E) Elevation 立面圖

Tower 21 第21座



(F) Elevation 立面圖



KEY PLAN 索引圖

## Information on common facilities in the Phase

期數中的公用設施的資料

		Area 面積		Total Area 總面積	
		square metre 平方米	square feet 平方呎	square metre 平方米	square feet 平方呎
Resident's clubhouse (including any recreational facilities for residents' use) 住客會所 (包括供住客使用的任何康樂設施)	Covered 有上蓋遮蓋	4681.991	50397	5750.046	61894
	Uncovered 無上蓋遮蓋	1068.055	11497		
Communal garden or play area for residents' use on the roof, or on any floor between the roof and the lowest residential floor, of a building in the Phase (whether known as a communal sky garden or otherwise) 位於期數中的建築物的天台或在天台和最低一層住宅樓層之間的任何一層的、供住客使用的公用花園或遊樂地方 (不論是稱為公用空中花園或有其他名稱)	Covered 有上蓋遮蓋	2701.928	29084	2701.928	29084
	Uncovered 無上蓋遮蓋	-	-		
Communal garden or play area for residents' use below the lowest residential floor of a building in the Phase (whether known as a covered and landscaped play area or otherwise) 位於期數中的建築物的最低一層住宅樓層以下的、供住客使用的公用花園或遊樂地方 (不論是稱為有蓋及園景的遊樂場或有其他名稱)	Covered 有上蓋遮蓋	-	-	-	-
	Uncovered 無上蓋遮蓋	-	-		

Remarks 備註：

Area in square metres are converted into square feet at a rate of 1 square metre = 10.764 square feet and rounded off to the nearest integer.

以平方米列出的面積以1平方米=10.764 平方呎換算至平方呎，並四捨五入至整數。

# Inspection of plans and deed of mutual covenant

## 閱覽圖則及公契

1. A copy of the outline zoning plan relating to the Development is available at [www.ozp.tpb.gov.hk](http://www.ozp.tpb.gov.hk).
2. (a) A copy of the following is available for inspection at the place at which the residential property of the Phase is offered to be sold - every deed of mutual covenant in respect of the residential property that has been executed.  
(b) The inspection is free of charge.

1. 備有關乎本發展項目的分區計劃大綱圖的文本供閱覽的互聯網網站的網址為 [www.ozp.tpb.gov.hk](http://www.ozp.tpb.gov.hk)。
2. (a) 以下文件的文本存放在期數的住宅物業的售樓處，以供閱覽－住宅物業每一已簽立的公契。  
(b) 無須為閱覽付費。



# Fittings, finishes and appliances

裝置、裝修物料及設備

Item	Description
<b>1. Exterior Finishes</b>	
a. External Wall	Tower facade is finished with aluminum claddings, glass louvers, ceramic tiles and curtain wall system. Podium facade is finished with crystallized white stone claddings, aluminum claddings, aluminum louvers and curtain wall system.
b. Window	Windows and curtain walls are made up of fluorocarbon-coated aluminum frame with tinted glass.
c. Bay Window	Nil
d. Planter	Planters at Lobby Floor and flat roofs of the following units are finished with natural stone on the external surface: Tower 20 : Flat A of 91/F, Flat C of 91/F and Flat D of 91/F of Zone 1 ; Tower 20 : Flat A of 12/F, Flat B of 12/F, Flat B of 37/F and Flat C of 38/F of Zone 2 ; Tower 21 : Flat A of 82/F, Flat A of 91/F, Flat B of 91/F and Flat C of 91/F of Zone 1 ; Tower 21 : Flat C of 80/F, Flat A of 81/F, Flat B of 81/F and Flat D of 81/F of Zone 3 ; Tower 21 : Flat A of 12/F, Flat B of 12/F, Flat B of 37/F and Flat C of 38/F of Zone 6.
e. Verandah or balcony	Nil
f. Drying facilities for clothing	Nil

<b>2. Interior Finishes</b>		
a. Lobby	Podium Shuttle Lift Lobby	The floor is finished with natural stone. The walls are finished with natural stone, featured glass, mirror and stainless steel feature panels. The false ceiling is finished with gypsum board.
	Tower Main Entrance Lobby	The floor is finished with natural stone. The walls are finished with natural stone, featured glass, mirror and stainless steel feature panels. The false ceiling is finished with gypsum board.
	Typical Lift Lobby	The floor is finished with natural stone. The walls are finished with natural stone, featured glass and mirror. The false ceiling is finished with gypsum board.
b. Internal Wall and Ceiling	<p>The internal walls of living room, dining room and bedroom are finished with emulsion paint ; The ceiling of living room, dining room and bedroom is finished with emulsion paint and partly finished with gypsum board false ceiling except the following units :</p> <p>For Flat A of 67/F - 85/F of Zone 1 of Tower 20: The internal walls of living room, dining room and bedrooms are finished with emulsion paint, except that there are no wall finishes for the glass wall at Bedroom 1; The ceiling of living room, dining room and bedroom is finished with emulsion paint and partly finished with gypsum board false ceiling.</p> <p>For Flat A of 86/F of Zone 1 of Tower 20 : The internal walls of living room and dining room are finished with wall coverings and partly finished with mirror finishes; The internal walls of all bedrooms are finished with wall coverings, except that there are no wall finishes for the glass wall at Bedroom 1; The ceiling of living room, dining room and bedroom is finished with emulsion paint and partly finished with gypsum board false ceiling.</p> <p>For Flat A of 87/F, Flat A of 88/F and Flat A of 89/F of Zone 1 of Tower 20 : The internal walls of living room and dining room are finished with emulsion paint and partly finished with timber veneer; The internal walls of all bedrooms are finished with emulsion paint; The ceiling of living room, dining room and bedroom is finished with emulsion paint and partly finished with timber and gypsum board false ceiling.</p> <p>For Flat A of 90/F of Zone 1 of Tower 20 : The internal walls of living room and dining room are finished with wall coverings and partly finished with timber veneer and mirror finishes, the ceiling of living room and dining room is finished with emulsion paint and partly finished with timber, stainless steel and gypsum board ceiling; The internal walls of all bedrooms are finished with wall coverings, the ceiling of all bedrooms are finished with emulsion paint and partly finished with gypsum board false ceiling.</p>	

Item	Description
c. Internal Floor	The internal floor of the living room, dining room and bedroom is finished with engineered timber flooring system with timber skirting except the following units :  For all Flat A units of Zone 1 of Tower 20, the internal floor of the living room, dining room and bedroom 1 are finished with natural stone flooring system with natural stone skirting and all other bedrooms are finished with engineered timber flooring system with timber skirting.
d. Bathroom	The walls of bathroom (except Store Toilet) are finished with natural stone and mirror up to false ceiling level. The floor of bathroom is finished with natural stone. The ceiling is finished with gypsum board false ceiling.
e. Kitchen	The walls of kitchen are finished with white crystallized stone and stainless steel up to false ceiling level. The floor is finished with natural stone. The ceiling is finished with metal and gypsum board false ceiling. Cooking bench is finished with solid surfacing material.

<b>3. Interior Fittings</b>		
a. Doors	Entrance Door	Solid core timber with wood veneer finish fitted with metal lockset, door viewer, door stopper and concealed over-head closer.
	Kitchen Door	Solid core timber with wood veneer finish, fitted with metal handle, door stopper, concealed over-head closer and vision glass panel.
	Bedroom Door (except Zone 1 of Tower 20)	Hollow core timber with wood veneer finish fitted with metal lockset and door stopper.
	Bathroom Door (except Zone 1 of Tower 20)	Hollow core timber with wood veneer finish, fitted with metal lockset and door stopper.
	Store Room Door (except Zone 1 of Tower 20)	Hollow core timber with wood veneer finish, fitted with metal lockset.
	Bedroom Door of Zone 1 of Tower 20	Solid core timber with wood veneer finish fitted with metal lockset and door stopper except the following units : Glass sliding Door with metal frame is provided at Bedroom 1 of all Flat A units of Zone 1 of Tower 20.
	Bathroom Door of Zone 1 of Tower 20	Solid core timber with wood veneer finish, fitted with metal lockset and door stopper.
	Store Room Door of Zone 1 of Tower 20	Solid core timber with wood veneer finish, fitted with metal lockset.
	Lavatory Door of Store Room	Frost glass door with metal door frame.
	Flat Roof	Sliding glass door with metal door frame and handle, fitted with metal lockset is provided at following units : Tower 20 : Flat A of 91/F, Flat C of 91/F and Flat D of 91/F of Zone 1 ; Tower 20 : Flat A of 12/F, Flat B of 12/F, Flat B of 37/F and Flat C of 38/F of Zone 2 ; Tower 21 : Flat A of 82/F, Flat A of 91/F, Flat B of 91/F and Flat C of 91/F of Zone 1 ; Tower 21 : Flat C of 80/F, Flat A of 81/F, Flat B of 81/F and Flat D of 81/F of Zone 3 ; Tower 21 : Flat A of 12/F, Flat B of 12/F, Flat B of 37/F and Flat C of 38/F of Zone 6.
b. Bathroom	Bathrooms (except Store Toilet) are fitted with natural stone countertop, chrome-plated wash basin mixer, bath and shower mixer and shower set, vitreous china wash basin, vitreous china water closet with cistern and enameled cast iron bathtub (1500mm long x 700mm width x 420mm high). Other fittings include LCD television, water heater (please refer to Appliances Schedule for the applicable units), concealed ventilation fan, chrome-plated towel bar, towel ring, paper holder and wooden mirror cabinet. Multifunctional dehumidifier is provided in some bathrooms (as indicated under the Mechanical & Electrical Provision Plan). Crystal ceiling light is provided in the bathroom of Bedroom 3 of the following units:	

# Fittings, finishes and appliances

裝置、裝修物料及設備

Item	Description
	Tower 20 : Flat D of 67/F - 90/F of Zone 1; Tower 21 : Flat A of 15/F - 91/F of Zone 1. Shower cubicle (if applicable as shown on the floor plans) is finished with natural stone with tempered glass door and partitions. Indirect feed water supply system is provided. Copper pipes for cold water supply and copper pipes with thermal insulation for hot water supply. For type of equipment please refer to "Appliances Schedule".
c. Kitchen	Wooden cabinets with glass finished door panels are provided in the following units: Flat A of 87/F, Flat A of 88/F, Flat A of 89/F and Flat A of 90/F of Zone 1 of Tower 20. Wooden cabinets with high gloss lacquered and aluminum finished door panels are provided in the following units: All units of Zone 1 of Tower 20 (except Flat A of 87/F, Flat A of 88/F, Flat A of 89/F and Flat A of 90/F) ; All Flat A and Flat B units of Zone 2 of Tower 20, Flat C of 38/F of Zone 2 of Tower 20 ; All units of Zone 1 and Zone 2 and Zone 3 of Tower 21 ; All Flat A and Flat B units of Zone 6 of Tower 21, Flat C of 38/F of Zone 6 of Tower 21. Wooden cabinets with high gloss lacquered door panels are provided in the following units: All Flat C and Flat D units of 12/F - 37/F of Zone 2 of Tower 20 ; All Flat E units of 16/F - 38/F of Zone 2 of Tower 20, all units of Zone 5 of Tower 21 ; All Flat C and Flat D units of 12/F - 37/F of Zone 6 of Tower 21, Flat E of 15/F - 38/F of Zone 6 of Tower 21. Each kitchen is fitted with solid surfacing material countertop and stainless steel sink and chrome-plated sink mixer. Copper pipes for cold water supply and copper pipes with thermal insulation for hot water supply. For type of equipment please refer to "Appliances Schedule".
d. Bedroom	Built-in wooden wardrobe is provided in the following bedrooms: Bedroom 4 of Flat A, Bedroom 2 of Flat B, Bedroom 3 of Flat C and Bedroom 3 of Flat D of 67/F - 90/F of Zone 1 of Tower 20.
e. Telephone	Telephone outlets are provided in living/dining room and bedrooms. For the location and number of the connection points, please refer to "Mechanical & Electrical Provision Plan/Schedule".
f. Aerials	Communal TV/FM/Satellite TV outlets are provided at living/dining room and bedrooms. For the location and number of the connection points, please refer to "Mechanical & Electrical Provision Plan/Schedule".
g. Electrical Installations	Concealed conduits are provided. Three/Single-phase electricity supply with miniature circuit breaker (MCB) distribution board is provided. Ceiling light points, socket outlets, lighting switches, switches for air-conditioner, water heater and exhaust fan are provided. Power point for curtain is provided at living room and bedroom. For the locations and numbers of power points and air-conditioner points, please refer to "Mechanical & Electrical Provision Plan/Schedule".
h. Gas Supply	Gas meter with gas supply pipe is provided and connected to gas hob (except Tower 21 : Flat K of Zone 5) and gas water heater (except Tower 21 : Flat E of 87/F of Zone 1 and Flat E of 90/F of Zone 1). Gas meter is located in kitchen for all units. For the location of gas meter, please refer to "Mechanical & Electrical Provision Plan/Schedule".
i. Washing Machine Connection Point	Drain point and water point are provided for washing machine in kitchen/store room. For the locations of the connection points, please refer to "Mechanical & Electrical Provision Plan/Schedule".
j. Water Supply	Concealed and exposed copper water pipes# for cold water supply. Concealed and exposed copper water pipes# with thermal insulation for hot water supply. Hot water is available.

4. Miscellaneous		
a. Lifts	Tower 21	13 nos. of "Hitachi" passenger lifts and 3 nos. of "Hitachi" service lifts installed serving floors as below: 3 nos. passenger lifts of Model No. HVF3 serving Zone 1 (L/F, 67/F-73/F, 75/F-83/F, 85/F-91/F);

Item	Description
	3 nos. passenger lifts of Model No. HVF3 serving Zone 2 (L/F, 15/F-23/F, 25/F-33/F, 35/F-38/F, 50/F-52/F, 55/F-57/F, 59/F-63/F); 2 nos. passenger lifts of Model No. UVF serving Zone 3 (L/F, 67/F-73/F, 75/F-81/F); 3 nos. passenger lifts of Model No. HVF3 serving Zone 5 (L/F, 15/F-23/F, 25/F-33/F, 35/F-38/F, 50/F-52/F, 55/F-57/F, 59/F-63/F);
a. Lifts	Tower 21 2 nos. passenger lifts of Model No. HVF3 serving Zone 6 (L/F, 12/F, 15/F-23/F, 25/F-33/F, 35/F-38/F); 1 no. service lift of Model No. HVF3 serving B1/F, G/F, 1/F-3/F, L/F, CH1/F, CH2/F, CH3/F, 15/F-23/F, 25/F-33/F, 35/F-38/F, 50/F-52/F, 55/F-57/F, 59/F-63/F, 67/F-73/F, 75/F-83/F and 85/F-91/F of Zone 1, 2, 3 and 5; 1 no. service lift of Model No. UVF4 serving B1/F, G/F, M/F, 1/F-3/F, L/F, CH1/F, CH2/F, CH3/F, 8/F, 12/F, 15-23/F, 25/F-33/F, 35/F-40/F, 50/F-52/F, 55/F-57/F, 59/F-63/F, 65/F-73/F, 75/F-83/F and 85/F-91/F of Zone 1, 2, 3, and 5; and 1 no. service lift of Model No. VF5 serving 3/F, L/F, CH1/F, CH2/F, CH3/F, 8/F, 12/F, 15/F-23/F, 25/F-33/F and 35/F-38/F of Zone 6. Tower 20 5 nos. of "Fujitec" passenger lifts of Model No. VVVF and 2 nos. of "Fujitec" service lifts of Model No. VVVF are installed at Tower 20 serving floors as below: 3 nos. passenger lifts serving Zone 1 (L/F, 67/F-73/F, 75/F-83/F, 85/F-91/F); 2 nos. passenger lifts serving Zone 2 (L/F, 12/F, 15/F-23/F, 25/F-33/F, 35/F-38/F); 1 no. service lift serving B1/F, G/F, 3/F, L/F, 6/F-8/F, U8/F, 16/F-23/F, 25/F-33/F, 35/F-38/F, 50/F-52/F, 55/F-57/F, 59/F-63/F, 66/F-73/F, 75/F-83/F and 85/F-91/F of Zone 1; and 1 no. service lift serving 3/F, L/F, 6/F-8/F, U8/F, 12/F, 15/F-23/F, 25/F-32/F, 33/F and 35/F-39/F of Zone 2. Lobby Floor (L/F) and Carpark 1 no. "Fujitec" passenger lift of Model No. VVVF serves 3/F carpark and L/F. 2 nos. of "Hitachi" passenger lifts of Model No. VF5 serves 1/F, 3/F carpark and L/F.
b. Letter Box	Stainless steel letter boxes are provided.
c. Refuse Collection	Refuse room is provided at each service apartment and residential floor. Collected refuse is centrally handled at Refuse Storage and Material Recovery Room at B1/F.
d. Water Meter, Electricity Meter and Gas Meter	Separate gas meter is provided in the kitchen of individual unit. Separate water and electricity meters for each individual unit are provided in common meter rooms on respective service apartment and residential floors.

5. Security Facilities
The main entrance, car park lift lobbies, lifts, clubhouse and L/F common areas are installed with CCTV system. Colored video door phone is installed in each service apartment and residential unit and linked to the visitor panel at the main entrance and the concierge at main lobby. Visitor panel with build-in card reader and combination lock for residents' access is provided at the main entrance at L/F. Vehicular control system is installed at the carpark entrances at 3/F. Panic alarm push button is installed in master bedroom of each unit and is linked to Security Control Room at 3/F.

6. Appliances
As set out in the "Appliances Schedule".

In relation to item 4(a) and 6 in the Phase specified in the above table, the Vendor undertakes that if lifts or appliances of the specified brand name or model number are not installed in the Phase, lifts or appliances of comparable quality will be installed.

Remark : # Exposed water pipes are not readily visible as they are placed behind false ceilings and cabinets.



# Fittings, finishes and appliances

## 裝置、裝修物料及設備

細項	描述
1. 外部裝修物料	
a. 外牆	大廈外牆裝有鋁飾板、玻璃百葉、瓦片及玻璃幕牆。 平台外牆以白微晶石材及鋁飾板鋪砌，並裝有鋁百葉及玻璃幕牆。
b. 窗	窗戶及玻璃幕牆均以鋁質窗框配以氟碳噴塗及有色玻璃。
c. 窗台	沒有
d. 花槽	大堂樓層及以下單位之平台之花槽的外部表面鋪上天然石材： 第20座：第1區，91樓A室、91樓C室及91樓D室； 第20座：第2區，12樓A室、12樓B室、37樓B室及38樓C室； 第21座：第1區，82樓A室、91樓A室、91樓B室及91樓C室； 第21座：第3區，80樓C室、81樓A室、81樓B室及81樓D室； 第21座：第6區，12樓A室、12樓B室、37樓B室及38樓C室
e. 陽台或露台	沒有
f. 乾衣設施	沒有

2. 室內裝修物料		
a. 大堂	穿梭升降機平台大堂	地台鋪砌天然石材。牆身鋪砌天然石材、裝飾玻璃、鏡及不銹鋼板飾面。天花裝設石膏板假天花。
	住宅升降機入口大堂	地台鋪砌天然石材。牆身鋪砌天然石材、裝飾玻璃、鏡及不銹鋼板飾面。天花裝設石膏板假天花。
	住宅各樓層升降機大堂	地台鋪砌天然石材。牆身鋪砌天然石材、裝飾玻璃及鏡。天花裝設石膏板假天花。
b. 內牆及天花板	各單位客廳、飯廳及睡房內牆身均髹上乳膠漆；客廳、飯廳及睡房天花板髹上乳膠漆及部份裝設石膏板假天花。下列單位除外： 第20座，第1區，67樓至85樓A室之客廳、飯廳及睡房內牆身均髹上乳膠漆，但睡房1的玻璃牆牆身不設裝修物料；客廳、飯廳及睡房天花板髹上乳膠漆及部份裝設石膏板假天花。 第20座，第1區，86樓A室之客廳及飯廳內牆身均鋪貼牆紙，部分牆身位置裝有鏡飾面；睡房內牆身均鋪貼牆紙，但睡房1的玻璃牆牆身不設裝修物料；客廳、飯廳及睡房的天花板均髹上乳膠漆及部份裝設石膏板假天花。 第20座，第1區，87樓A室、88樓A室及89樓A室之客廳及飯廳內牆身均髹上乳膠漆，部分牆身位置裝有木皮飾面；睡房內牆身均髹上乳膠漆；客廳、飯廳及睡房的天花板均髹上乳膠漆及部份裝設木及石膏板假天花。 第20座，第1區，90樓A室之客廳及飯廳內牆身均鋪貼牆紙，部分牆身位置裝有木皮及鏡飾面，天花板均髹上乳膠漆及部份裝設木、不銹鋼及石膏板假天花；睡房內牆身均鋪貼牆紙，天花板均髹上乳膠漆及部份裝設石膏板假天花。	

細項	描述	
c. 內部地板	各單位客廳、飯廳及睡房內地台鋪砌複合木地板及複合木地腳線。下列單位除外： 第20座，第1區所有A室單位之客廳、飯廳及睡房 1 之地台均鋪砌天然石材及天然石材地腳線，其餘睡房內部地台鋪砌複合木地板及複合木地腳線。	
d. 浴室	各單位的浴室（不包括儲物室洗手間）牆身鋪砌天然石材及鏡飾面至假天花底。浴室地台鋪砌天然石材。天花板裝設石膏板假天花。	
e. 廚房	各單位的廚房牆身鋪砌白色微晶人造石及不銹鋼飾面至假天花底。廚房地台鋪砌天然石材。天花板裝設金屬板及石膏板假天花。灶台鋪砌無縫人造塑料。	
3. 室內裝置		
a. 門	單位大門	實心木門配上木皮飾面，裝有金屬門鎖、防盜眼、門擋及隱蔽式氣鼓。
	廚房門	實心木門配上木皮飾面，裝有金屬門手抽、門擋、隱蔽式氣鼓及鑲配玻璃。
	睡房門（第20座第1區除外）	空心木門配上木皮飾面，裝有金屬門鎖及門擋。
	浴室門（第20座第1區除外）	空心木門配上木皮飾面，裝有金屬門鎖及門擋。
	儲物室門（第20座第1區除外）	空心木門配上木皮飾面，裝有金屬門鎖。
	睡房門（第20座第1區）	實心木門配上木皮飾面，裝有金屬門鎖及門擋。下列單位除外： 第20座，第1區，所有A室之睡房 1 裝有玻璃趟門配金屬門框。
	浴室門（第20座第1區）	實心木門配上木皮飾面，裝有金屬門鎖及門擋。
	儲物室門（第20座第1區）	實心木門配上木皮飾面，裝有金屬門鎖。
	儲物室洗手間	磨沙玻璃門配金屬門框。
	平台	以下單位安裝玻璃趟門配金屬門框及手抽，裝有金屬門鎖： 第20座：第1區，91樓A室、91樓C室及91樓D室； 第20座：第2區，12樓A室、12樓B室、37樓B室及38樓C室； 第21座：第1區，82樓A室、91樓A室、91樓B室及91樓C室； 第21座：第3區，80樓C室、81樓A室、81樓B室及81樓D室； 第21座：第6區，12樓A室、12樓B室、37樓B室及38樓C室。
b. 浴室	浴室(不包括儲物室洗手間) 配以天然石檯面; 鍍鉻洗手盆水龍頭、鍍鉻浴缸及花灑龍頭及花灑套裝; 搪瓷洗手盆、搪瓷坐廁連水箱、搪瓷面鑄鐵浴缸(長1500毫米 x 闊700毫米 x 高420毫米)。其他設備包括液晶電視、熱水爐(適用的單位請參考「設備說明」、隱藏式抽氣扇、鍍鉻毛巾掛桿、鍍鉻毛巾架、鍍鉻廁紙架及木製鏡櫃。部份浴室裝有多功能抽濕機(顯示於機電裝置圖內)。 以下單位之睡房3的浴室裝有水晶天花燈飾： 第20座：第1區，67樓至90樓D室 第21座：第1區，15樓至91樓A室 部份浴室(如平面圖顯示)設有淋浴間，地面鋪砌天然石及附設強化玻璃門及間隔。 由間接供水系統供水。冷水供水系統採用銅喉，熱水供水系統採用附有隔熱層之銅喉。 設備類型請參考「設備說明」。	

# Fittings, finishes and appliances

裝置、裝修物料及設備

細項	描述
c. 廚房	以下單位之廚房備有木製櫥櫃組合配以玻璃飾面門板： 第20座，第1區，87樓A室、88樓A室、89樓A室及90樓A室 以下單位之廚房備有木製櫥櫃組合配以高光焗漆及鋁質飾面門板： 第20座，第1區各單位（87樓A室、88樓A室、89樓A室、90樓A室除外） 第20座，第2區各樓層之A室及B室，第20座第2區38樓C室，第21座第1區各單位， 第21座第2區各單位，第21座第3區各單位，第21座第6區之各樓層之A室及B室，第21座第6區38樓C室 以下單位之廚房備有木製櫥櫃組合配以高光焗漆門板： 第20座，第2區12樓至37樓各樓層之C室及D室，第20座第2區16樓至38樓各樓層之E室， 第21座第5區各單位，第21座第6區12樓至37樓各樓層之C室及D室，第21座第6區15樓至38樓各樓層之E室 各廚房均選用無縫人造塑料檯面及不銹鋼洗滌盆及鍍鉻冷熱水龍頭。 冷水供水系統採用銅喉，熱水供水系統採用附有隔熱層之銅喉。設備類型請參考「設備說明」。
d. 睡房	以下單位睡房裝有嵌入式木衣櫃： 第20座第1區67樓至90樓各樓層之A室睡房4、B室睡房2、C室睡房3及D室睡房3
e. 電話	客廳 / 飯廳及睡房均裝有電話插座。有關接駁點的位置及數量請參考「機電裝置圖/機電裝置數量說明」。
f. 天線	客廳 / 飯廳及睡房均裝有公用電視 / 收音機天線 / 衛星電視插座。有關接駁點的位置及數量請參考「機電裝置圖/機電裝置數量說明」。
g. 電力裝置	裝有隱蔽導管。提供配有微型斷路器配電箱的單相/三相電源。裝有天花燈位、電插座、燈制、冷氣機開關制、熱水爐開關制及抽氣扇開關。客廳及睡房裝設有窗簾電源插座。 有關電插座及空調機接駁點的位置及數量請參考「機電裝置圖/機電裝置數量說明」。
h. 氣體供應	裝有煤氣喉接駁煤氣煮食爐(第21座：第5區，K室除外)及煤氣熱水爐(第21座：第1區，87樓E室及90樓E室除外)，並裝有獨立煤氣錶於單位之廚房內。有關煤氣錶位置請參考「機電裝置圖/機電裝置數量說明」。
i. 洗衣機接駁點	洗衣機入水及排水位設於廚房/儲物室內。有關接駁點的位置請參考「機電裝置圖/機電裝置數量說明」。
j. 供水	冷水喉採用隱藏式及外露式銅喉*。熱水喉採用附有隔熱層的隱藏式及外露式銅喉*。有熱水供應。

4. 雜項	
a. 升降機	第21座 共設有13部"日立"牌客用升降機及3部"日立"牌載貨升降機，詳見下列為可達到之樓層： 3部客用升降機(型號HVF3)可到達第1區；大堂樓層、67樓至73樓、75樓至83樓、85樓至91樓； 3部客用升降機(型號HVF3)可到達第2區；大堂樓層、15樓至23樓、25樓至33樓、35樓至38樓、50樓至52樓、55樓至57樓、59樓至63樓； 2部客用升降機(型號UVF)可到達第3區；大堂樓層、67樓至73樓、75樓至81樓； 3部客用升降機(型號HVF3)可到達第5區；大堂樓層、15樓至23樓、25樓至33樓、35樓至38樓、50樓至52樓、55樓至57樓、59樓至63樓； 2部客用升降機(型號HVF3)可到達第6區；大堂樓層、12樓、15樓至23樓、25樓至33樓、35樓至38樓； 1部載貨升降機(型號為HVF3)可到達第1、2、3及5區 B1樓，G樓，1樓-3樓，大堂樓層，CH1樓，CH2樓，CH3樓，15樓-23樓，25樓-33樓，35樓-38樓，50樓至52樓，55樓至57樓，59樓至63樓，67樓至73樓，75樓至83樓及85樓至91樓；

細項	描述
	第20座 1部載貨升降機(型號為UVF4)可到達第1、2、3及5區 B1樓，G樓，M樓，1樓至3樓，大堂樓層，CH1樓，CH2樓，CH3樓，8樓，12樓，15樓至23樓，25樓至33樓，35樓至40樓，50樓至52樓，55樓至57樓，59樓至63樓，65樓至73樓，75樓至83樓及85樓至91樓；及 1部載貨升降機(型號VF5)可到達第6區3樓，大堂樓層，CH1樓，CH2樓，CH3樓，8樓，12樓，15樓至23樓，25樓至33樓及35樓至38樓 共設有5部"富士達"客用升降機(型號VVVF)及2部"富士達"載貨升降機(型號VVVF)，詳見下列為可達到之樓層： 3部客用升降機可到達第1區(大堂樓層，67樓至73樓，75樓至83樓，85樓至91樓)； 2部客用升降機可到達第2區(大堂樓層，12樓，15樓至23樓，25樓至33樓，35樓至38樓)； 1部載貨升降機可到達第1區B1樓，G樓，3樓，大堂樓層，6樓-8樓，U8樓，16樓至23樓，25樓至33樓，35樓至38樓，50樓至52樓，55樓至57樓，59樓至63樓，66樓至73樓，75樓至83樓及85樓至91樓；及 1部載貨升降機可到達第2區3樓，大堂樓層，6樓-8樓，U8樓，12樓，15樓至23樓，25樓至32樓，33樓及35樓至39樓
a. 升降機	大堂樓層及停車場 設有1部"富士達"客用升降機(型號VVVF)到達3樓停車場及大堂樓層。 另有2部"日立"牌客用升降機(型號VF5)到達1樓、3樓停車場及大堂樓層。
b. 信箱	不銹鋼信箱。
c. 垃圾收集	每層服務式公寓及住宅樓層均設有垃圾收集房。收集後的垃圾會在位於地庫1樓的垃圾及物料回收房作中央處理。
d. 水錶、電錶及氣體錶	每戶於單位廚房內裝有獨立煤氣錶。另每層服務式公寓及住宅之錶房均裝有每戶專用之獨立水錶及電錶。

5. 保安設施
住客入口大堂、停車場大堂、升降機、會所及大堂樓層公用位置均設有閉路電視系統。各服務式公寓及住宅單位設有彩色視像對講機，連接大堂樓層住客入口之訪客對講系統及大堂禮賓部。各住客出入口均裝置備有智能咭及密碼鎖之訪客對講系統。於3樓停車場出入口均設有出入控制閘。 主人房備有防盜警鐘按鈕，連接3樓保安控制室。

6. 設備
在「設備說明」表示。

就以上列表所指明的期數中的第4(a)及6細項，賣方承諾如期數中沒有安裝指明的品牌名稱或產品型號的升降機或設備，便會安裝品質相若的升降機或設備。

備註：\* 外露水管被假天花及貯存櫃遮蔽，因而不容易看見。



# Fittings, finishes and appliances

裝置、裝修物料及設備

## Appliances Schedule 設備說明

			Flat A, 91/F, Zone 1, Tower 20 第20座第1區 91樓A室	Flat C, 91/F, Zone 1, Tower 20 第20座第1區 91樓C室	Flat D, 91/F, Zone 1, Tower 20 第20座第1區 91樓D室	Flat A, 12/F, Zone 2, Tower 20 第20座第2區 12樓A室	Flat B, 37/F, Zone 2, Tower 20 第20座第2區 37樓B室	Flat B, 12/F, Zone 2, Tower 20 第20座第2區 12樓B室	Flat C, 38/F, Zone 2, Tower 20 第20座第2區 38樓C室	
Location 位置	Appliance 設備	Brand 品牌	Model No. 型號							
Living/Dining Room/ Bedroom/Store/ Kitchen/Bathroom 客飯廳、睡房、 儲物室、廚房及 浴室	Water Cooled Split Type Air-conditioner 水冷分體式冷氣機	Indoor Unit 室內機	MCC015TP MCC020TP MCC030TP M5WM10JR M5WM15JR M5WM20JR	MCC015TP MCC025TP M5WM10JR M5WM20JR	MCC015TP MCC020TP MCC025TP M5WM10JR M5WM20JR					
		Outdoor Unit 室外機	MCC015TP MCC020TP MCC030TP M5WM10JR M5WM15JR M5WM20JR	MWSC015DRP MWSC025DRP MWSC010DRP MWSC020DRP	MWSC015DRP MWSC020DRP MWSC025DRP MWSC010DRP					
	Air Cooled Split Type Air-conditioner 風冷分體式冷氣機	Indoor Unit 室內機	Daikin 大金							
		Outdoor Unit 室外機								
		Indoor Unit 室內機	Panasonic 樂聲牌				CS-E12JD4H CS-E18JD4H CS-E23JD4H CS-YE9MKA	CS-E12JD4H CS-E18JD4H CS-YE9MKA	CS-E18JD4H CS-YE9MKA	CS-E12JD4H CS-YE9MKA CS-YE18MKA
		Outdoor Unit 室外機					CU-E12JBH CU-E18JBH CU-E23JBH CU-YE9MKA	CU-E12JBH CU-E18JBH CU-YE9MKA	CU-E18JBH CU-YE9MKA	CU-E12JBH CU-YE9MKA CU-YE18MKA
	Living/Dining Room 客飯廳	Exhaust Hood 抽油煙機	Miele							
		Refrigerator 雪櫃	Subzero							
Refrigerator 雪櫃		Siemens 西門子								
Induction Hob (Double-burner) 電磁爐 (雙爐頭)		Miele								
Electric BBQ Grill 電燒烤爐		Miele								
Microwave Oven 微波爐		Miele								
Oven 焗爐		Miele								
Steamer 電蒸爐		Miele								
Coffee Maker 咖啡機		Miele								
Wine Cooler 紅酒冷藏櫃		Miele								
Dishwasher 洗碗碟機		Miele								



# Fittings, finishes and appliances

裝置、裝修物料及設備

## Appliances Schedule 設備說明

			Flat A, 91/F, Zone 1, Tower 20 第20座第1區 91樓A室	Flat C, 91/F, Zone 1, Tower 20 第20座第1區 91樓C室	Flat D, 91/F, Zone 1, Tower 20 第20座第1區 91樓D室	Flat A, 12/F, Zone 2, Tower 20 第20座第2區 12樓A室	Flat B, 37/F, Zone 2, Tower 20 第20座第2區 37樓B室	Flat B, 12/F, Zone 2, Tower 20 第20座第2區 12樓B室	Flat C, 38/F, Zone 2, Tower 20 第20座第2區 38樓C室
Location 位置	Appliance 設備	Brand 品牌	Model No. 型號						
Living/Dining Room 客飯廳	Washer / Dryer 洗衣乾衣機	Miele							
	LCD TV 液晶電視	Sharp 聲寶							
	LCD TV 液晶電視	Sony 索尼							
	Electric Water Heater 電熱水爐	斯寶亞創 Stiebel Eltron							
Kitchen 廚房	Gas Hob (Single-burner) 煤氣煮食爐 (單爐頭)	Miele	KM-416-3	KM-416-3	KM-416-3	KM-416-3	KM-416-3	KM-416-3	KM-416-3
	Gas Hob (Double-burner) 煤氣煮食爐 (雙爐頭)	Miele	KM-405-3	KM-405-3	KM-405-3	KM-405-3	KM-405-3	KM-405-3	KM-405-3
	Induction Hob (Double-burner) 電磁爐 (雙爐頭)	Miele	KM-418						
	Electric BBQ Grill 電燒烤爐	Miele	KM-411-3	KM-411-3	KM-411-3	KM-411-3	KM-411-3	KM-411-3	KM-411-3
	Exhaust Hood 抽油煙機	Miele	DA422	DA422	DA422-4	DA422	DA422	DA422	DA422
	Exhaust Fan (Mounted above false ceiling) 抽氣扇 (置於假天花上)	Ostberg							
	Exhaust Fan (Mounted above false ceiling) 抽氣扇 (置於假天花上)	Panasonic 樂聲牌	FV-20NS1H	FV-20NS1H	FV-20NS1H	FV-18NS1H	FV-20NS1H	FV-20NS1H	FV-20NS1H
	Gas Water Heater 煤氣熱水爐	TGC		NJW160TFQL (for Bathroom of Bedroom 4) (供應睡房4的浴室)			NJW160TFQL (for Bathroom) (供應浴室)	NJW160TFQL (for Bathroom) (供應浴室)	NJW160TFQL (for Bathroom) (供應浴室)
	Microwave Oven 微波爐	Miele	M8261	M8261	M8261	M8261	M8261	M8261	M8261
	Oven 焗爐	Miele	H4900B	H4900B	H4900B	H4900B	H4900B	H4900B	H4900B
	Steamer 電蒸爐	Miele	DG 4060	DG 4060	DG 4060	DG 4060	DG 4060	DG 4060	DG 4060
	Coffee Maker 咖啡機	Miele							
	Wine Cooler 紅酒冷藏櫃	Miele	KWT 4154 UG			KWT 4154 UG			
	Washer / Dryer 洗衣乾衣機	Miele	WT 2679 I WPM	WT 2679 I WPM	WT 2679 I WPM	WT 2679 I WPM	WT 2679 I WPM	WT 2679 I WPM	WT 2679 I WPM
	Refrigerator 雪櫃	Subzero	I650G	I650	I650	I650G	I650G	I650G	I650G
	Refrigerator 雪櫃	Siemens 西門子							
	Dishwasher 洗碗碟機	Miele	G1630 SCI			G1630 SCI			
LCD TV in Kitchen 廚房液晶電視	JSA		B51002D		B51002D	B51002D	B51002D	B51002D	
LCD TV in Kitchen 廚房液晶電視	Sharp 聲寶								
Electric Water Heater 電熱水爐	Stiebel Eltron 斯寶亞創	(Supplied from Toilet inside Store) (由儲物室洗手間供應)	(Supplied from Toilet inside Store) (由儲物室洗手間供應)	(Supplied from Toilet inside Store) (由儲物室洗手間供應)	DT 6	(Supplied from Toilet inside Store) (由儲物室洗手間供應)	(Supplied from Toilet inside Store) (由儲物室洗手間供應)	DT 6	

# Fittings, finishes and appliances

裝置、裝修物料及設備

## Appliances Schedule 設備說明

		Flat A, 91/F, Zone 1, Tower 20 第20座第1區 91樓A室	Flat C, 91/F, Zone 1, Tower 20 第20座第1區 91樓C室	Flat D, 91/F, Zone 1, Tower 20 第20座第1區 91樓D室	Flat A, 12/F, Zone 2, Tower 20 第20座第2區 12樓A室	Flat B, 37/F, Zone 2, Tower 20 第20座第2區 37樓B室	Flat B, 12/F, Zone 2, Tower 20 第20座第2區 12樓B室	Flat C, 38/F, Zone 2, Tower 20 第20座第2區 38樓C室	
Location 位置	Appliance 設備	Brand 品牌	Model No. 型號						
Bathroom 浴室	LCD TV in Bathroom 浴室液晶電視	COMEMON	TM102W	TM102W		TM102W	TM102W	TM102W	
	Gas Water Heater 煤氣熱水爐	TGC					(Supplied from Kitchen) (由廚房供應)	(Supplied from Kitchen) (由廚房供應)	(Supplied from Kitchen) (由廚房供應)
	Electric Water Heater 電熱水爐	Stiebel Eltron 斯寶亞創	DHE 27	DHE 21 DHE 27 (for Bathroom of Bedroom 3) (供應睡房3的浴室)	DHE 21	DHE 21			
	Mirror Defroster 鏡面除霧器	BMB	HKA-179A	HKA-179A	HKA-179A	HKA-179A	HKA-179A	HKA-179A	HKA-179A
	Ventilation Fan 抽氣扇	Ostberg							
	Ventilation Fan 抽氣扇	Panasonic 樂聲牌	FV-18NS1H	FV-15NS1H	FV-15NS1H	FV-15NS1H	FV-15NS1H	FV-15NS1H	FV-15NS1H
	Multifunctional Dehumidifier 多功能抽濕機	Cold Magic 高美		CDH22R2	CDH22R2	CDH22R2	CDH22R2	CDH22R2	CDH22R2
Bathroom inside Bedroom 睡房內的浴室			Bathroom of Bedroom 1 睡房1的浴室	Bathroom of Bedroom 4 睡房4的浴室	Bathroom of Bedroom 4 睡房4的浴室	Bathroom of Bedroom 1 睡房1的浴室	Bathroom of Bedroom 4 睡房4的浴室		
	LCD TV in Bathroom 浴室液晶電視	COMEMON	TM102W	TM102W		TM102W	TM102W		
	LCD TV in Bathroom 浴室液晶電視	COSTEL							
	Gas Water Heater 煤氣熱水爐	TGC		(Supplied from Kitchen) (由廚房供應)					
	Electric Water Heater 電熱水爐	Stiebel Eltron 斯寶亞創	DHE 27		DHE 21	DHE 27	DHE 27		
	Mirror Defroster 鏡面除霧器	BMB	HKA-179A	HKA-179A	HKA-179A	HKA-179A	HKA-179A		
	Ventilation Fan 抽氣扇	Ostberg							
	Ventilation Fan 抽氣扇	Panasonic 樂聲牌	FV-18NS1H	FV-15NS1H	FV-15NS1H	FV-18NS1H	FV-15NS1H		
Multifunctional Dehumidifier 多功能抽濕機	Cold Magic 高美								

# Fittings, finishes and appliances

裝置、裝修物料及設備

## Appliances Schedule 設備說明

		Flat A, 91/F, Zone 1, Tower 20 第20座第1區 91樓A室	Flat C, 91/F, Zone 1, Tower 20 第20座第1區 91樓C室	Flat D, 91/F, Zone 1, Tower 20 第20座第1區 91樓D室	Flat A, 12/F, Zone 2, Tower 20 第20座第2區 12樓A室	Flat B, 37/F, Zone 2, Tower 20 第20座第2區 37樓B室	Flat B, 12/F, Zone 2, Tower 20 第20座第2區 12樓B室	Flat C, 38/F, Zone 2, Tower 20 第20座第2區 38樓C室	
Location 位置	Appliance 設備	Brand 品牌	Model No. 型號						
Bathroom inside Bedroom 睡房內的浴室					Bathroom of Bedroom 4 睡房4的浴室				
	LCD TV in Bathroom 浴室液晶電視	COMEMON			TM102W				
	LCD TV in Bathroom 浴室液晶電視	LG							
	Electric Water Heater 電熱水爐	Stiebel Eltron 斯寶亞創			DHE 27				
	Mirror Defroster 鏡面除霧器	BMB			HKA-179A				
	Ventilation Fan 抽氣扇	Ostberg							
	Ventilation Fan 抽氣扇	Panasonic 樂聲牌			FV-18NS1H				
	Multifunctional Dehumidifier 多功能抽濕機	Cold Magic 高美							
Bathroom inside Bedroom 睡房內的浴室			Bathroom of Bedroom 5 睡房5的浴室	Bathroom of Bedroom 3 睡房3的浴室	Bathroom of Bedroom 3 睡房3的浴室	Bathroom of Bedroom 2 睡房2的浴室	Bathroom of Bedroom 1 睡房1的浴室	Bathroom of Bedroom 1 睡房1的浴室	Bathroom of Bedroom 3 睡房3的浴室
	LCD TV in Bathroom 浴室液晶電視	Toshiba 東芝	20V300H	20V300H	20V300H	20V300H	20V300H	20V300H	20V300H
	LCD TV in Bathroom 浴室液晶電視	COMEMON							
	LCD TV in Bathroom 浴室液晶電視	COSTEL							
	Electric Water Heater 電熱水爐	Stiebel Eltron 斯寶亞創	DHE 27	(Supplied from Bathroom) (由浴室供應)	DHE 27	DHE 27	DHE 27	DHE 27	DHE 27
	Mirror Defroster 鏡面除霧器	BMB	HKA-179A	HKA-179A	HKA-179A	HKA-179A	HKA-179A	HKA-179A	HKA-179A
	Ventilation Fan 抽氣扇	Ostberg							
Ventilation Fan 抽氣扇	Panasonic 樂聲牌	FV-18NS1H	FV-15NS1H	FV-18NS1H:	FV-18NS1H	FV-18NS1H	FV-18NS1H	FV-18NS1H	
Bathroom inside Bedroom 睡房內的浴室									
	LCD TV in Bathroom 浴室液晶電視	LG							
	Electric Water Heater 電熱水爐	Stiebel Eltron 斯寶亞創							
	Ventilation Fan 抽氣扇	Ostberg							



Appliances Schedule 設備說明

			Flat A, 91/F, Zone 1, Tower 20 第20座第1區 91樓A室	Flat C, 91/F, Zone 1, Tower 20 第20座第1區 91樓C室	Flat D, 91/F, Zone 1, Tower 20 第20座第1區 91樓D室	Flat A, 12/F, Zone 2, Tower 20 第20座第2區 12樓A室	Flat B, 37/F, Zone 2, Tower 20 第20座第2區 37樓B室	Flat B, 12/F, Zone 2, Tower 20 第20座第2區 12樓B室	Flat C, 38/F, Zone 2, Tower 20 第20座第2區 38樓C室
Location 位置	Appliance 設備	Brand 品牌	Model No. 型號						
Bathroom inside Study 書房內的浴室	Electric Water Heater 電熱水爐	Stiebel Eltron 斯寶亞創	DHE 21		DHE 21				
	Mirror Defroster 鏡面除霧器	BMB							
	LCD TV in Bathroom 浴室液晶電視	COMEMON	TM102W			TM102W			
	Ventilation Fan 抽氣扇	Ostberg							
	Ventilation Fan 抽氣扇	Panasonic 樂聲牌	FV-12NS1H		FV-12NS1H				
Toilet inside Study 書房內的洗手間	Electric Water Heater 電熱水爐	Stiebel Eltron 斯寶亞創		DHE 27					
	Mirror Defroster 鏡面除霧器	BMB							
	Ventilation Fan 抽氣扇	Ostberg							
	Ventilation Fan 抽氣扇	Panasonic 樂聲牌		FV-12NS1H					
Toilet inside Living/Dining Room 客飯廳的洗手間	Electric Water Heater 電熱水爐	Stiebel Eltron 斯寶亞創	DT 6						
	Mirror Defroster 鏡面除霧器	BMB	HKA179A						
	Ventilation Fan 抽氣扇	Ostberg							
	Ventilation Fan 抽氣扇	Panasonic 樂聲牌	FV-12NS1H						
Toilet inside Store 儲物室洗手間	Electric Water Heater 電熱水爐	Stiebel Eltron 斯寶亞創	HDB 21	HDB 21	HDB 21	HDB 21	HDB 21	HDB 21	HDB 21
	Ventilation Fan 抽氣扇	Ostberg							
	Ventilation Fan 抽氣扇	Panasonic 樂聲牌	FV-12NS1H	FV-12NS1H	FV-12NS1H	FV-12NS1H	FV-12NS1H	FV-12NS1H	FV-12NS1H

# Fittings, finishes and appliances

裝置、裝修物料及設備

## Appliances Schedule 設備說明

Location 位置		Appliance 設備		Brand 品牌	Model No. 型號														
Living/Dining Room/ Bedroom/Store/ Kitchen/Bathroom 客飯廳、睡房、 儲物室、廚房及 浴室	Water Cooled Split Type Air-conditioner 水冷分體式冷氣機	Indoor Unit 室內機	McQuay 麥克維爾	MCC015TP	MCC015TP	MCC025TP	MCC015TP	MCC015TP	MCC015TP										
				MCC025TP	MCC025TP	MCC030TP	MCC020TP	MCC025TP	MCC020TP										
				MCC030TP	MCC030TP	M5WM10JR	M5WM10JR	M5WM10JR	M5WM10JR										
		M5WM15JR		M5WM15JR	M5WM15JR	M5WM15JR	M5WM15JR	M5WM15JR											
		M5WM20JR		M5WM20JR	M5WM20JR	M5WM20JR	M5WM20JR	M5WM20JR											
		M5WM20JR		M5WM20JR	M5WM20JR	M5WM20JR	M5WM20JR	M5WM20JR											
	Air cooled split type Air-conditioner 風冷分體式冷氣機	Indoor Unit 室內機	Outdoor Unit 室外機	Daikin 大金															
		Indoor Unit 室內機	Outdoor Unit 室外機		Panasonic 樂聲牌								CS-E23JD4H	CS-E12JD4H	CS-E12JD4H	CS-YE9MKA	CS-YE12MKA	CS-YE12MKA	
														CS-E18JD4H	CS-E18JD4H	CS-E18JD4H	CS-YE18MKA	CS-YE18MKA	CS-YE18MKA
		Indoor Unit 室內機	Outdoor Unit 室外機			Panasonic 樂聲牌								CU-E23JBH	CU-E12JBH	CU-E12JBH	CU-YE9MKA	CU-YE12MKA	CU-YE12MKA
															CU-E18JBH	CU-E18JBH	CU-E18JBH	CU-YE18MKA	CU-YE18MKA
		Panasonic 樂聲牌										CU-YE9MKA	CU-YE9MKA	CU-YE9MKA	CU-YE18MKA	CU-YE18MKA	CU-YE18MKA		
												CU-YE18MKA	CU-YE18MKA	CU-YE18MKA	CU-YE18MKA	CU-YE18MKA	CU-YE18MKA		
Living/Dining Room 客飯廳	Exhaust Hood 抽油煙機		Miele	DA422-4	DA422-6														
	Refrigerator 雪櫃		Subzero	ICBBI-42 S/O	ICBBI-42 S/O														
	Induction Hob (Double-burner) 電磁爐 (雙爐頭)		Miele	KM 6352	KM 6358														
	Coffee Maker 咖啡機		Miele	CVA6401	CVA6401														
	Microwave Oven 微波爐		Miele	H6400BM	H6400BM														
	Oven 焗爐		Miele	H6890BP	H6890BP														
	Wine Cooler 紅酒冷藏櫃		Miele	KWT 4154 UG-1	KWT 4154 UG-1														
	Ventilation Fan 抽氣扇		Ostberg	REF140A	REF140A														
Ventilation Fan 抽氣扇		Panasonic 樂聲牌																	

# Fittings, finishes and appliances

裝置、裝修物料及設備

## Appliances Schedule 設備說明

Location 位置		Appliance 設備	Brand 品牌	Model No. 型號												
Kitchen 廚房	Gas Hob (Single-burner) 煤氣煮食爐 (單爐頭)	Miele	CS1018	CS1018	CS1018	CS1018	CS1018	CS1018	CS1018	KM-416-3	KM-416-3	KM-416-3	KM-416-3	KM-416-3	KM-416-3	
	Gas Hob (Double-burner) 煤氣煮食爐 (雙爐頭)	Miele	CS1013-1	CS1013-1	CS1013-1	CS1013-1	CS1013-1	CS1013-1	CS1013-1	KM-405-3	KM-405-3	KM-405-3	KM-405-3	KM-405-3	KM-405-3	
	Electric BBQ Grill 電燒烤爐	Miele	CS1312BG	CS1312BG	CS1312BG		CS1312BG	CS1312BG			KM-411-3	KM-411-3				
	Exhaust Hood 抽油煙機	Miele	DA422-4	DA422-6	DA422-6	DA429-6	DA422-6	DA422-6	DA422-6	DA439	DA422	DA422	DA439	DA439	DA439	
	Exhaust Fan (Mounted above false ceiling) 抽氣扇 (置於假天花上)	Ostberg														
	Exhaust Fan (Mounted above false ceiling) 抽氣扇 (置於假天花上)	Panasonic 樂聲牌	FV-20NS1H	FV-20NS1H	FV-20NS1H	FV-20NS1H	FV-20NS1H	FV-20NS1H	FV-20NS1H	FV-20NS1H	FV-20NS1H	FV-20NS1H	FV-20NS1H	FV-20NS1H	FV-20NS1H	FV-20NS1H
	Gas Water Heater 煤氣熱水爐	TGC				NJW160TFQL (for Bathroom) (供應浴室)	NJW160TFQL (for Bathroom of Bedroom 4) (供應睡房4 的浴室)				NJW160TFQL (for Bathroom) (供應浴室)	NJW160TFQL (for Bathroom) (供應浴室)	NJW160TFQL (for Bathroom) (供應浴室)	NJW160TFQL (for Bathroom) (供應浴室)	NJW160TFQL (for Bathroom) (供應浴室)	NJW160TFQL (for Bathroom) (供應浴室)



# Fittings, finishes and appliances

裝置、裝修物料及設備

## Appliances Schedule 設備說明

Location 位置	Appliance 設備	Brand 品牌	Model No. 型號											
Kitchen 廚房	Microwave Oven 微波爐	Miele	Flat A, 90/F, Zone 1, Tower 20 第20座第1區90 樓A室	Flat A, 87/F-89/F, Zone 1, Tower 20 第20座第1區87 至89樓A室	Flat A, 67/F-73/F, 75/F-83/F and 85/F-86/F, Zone 1, Tower 20 第20座第1區 67至73樓， 75至83樓及 85至86樓A室	Flat B, 67/F-73/F, 75/F-83/F and 85/F-90/F, Zone 1, Tower 20 第20座第1區 67至73樓， 75至83樓及 85至90樓B室	Flat C, 67/F-73/F, 75/F-83/F and 85/F-90/F, Zone 1, Tower 20 第20座第1區 67至73樓， 75至83樓及 85至90樓C室	Flat D, 67/F-73/F, 75/F-83/F and 85/F-90/F, Zone 1, Tower 20 第20座第1區 67至73樓， 75至83樓及 85至90樓D室	Flat A, 16/F-23/F, 25/F-33/F and 35/F-36/F, Zone 2, Tower 20 第20座第2區 16至23樓， 25至33樓及 35至36樓A室	Flat B, 38/F, Zone 2, Tower 20 第20座第2區 38樓B室	Flat B, 15/F-23/F, 25/F-33/F and 35/F-36/F, Zone 2, Tower 20 第20座第2區 15至23樓， 25至33樓及 35至36樓B室	Flat C, 12/F, 15/F-23/F, 25/F-33/F, and 35/F-37/F, Zone 2, Tower 20 第20座第2區 12樓， 15至23樓， 25至33樓及 35至37樓C室	Flat D, 12/F, 15/F-23/F, 25/F-33/F, and 35/F-37/F, Zone 2, Tower 20 第20座第2區 12樓， 15至23樓， 25至33樓及 35至37樓D室	Flat E, 16/F-23/F, 25/F-33/F and 35/F-38/F, Zone 2, Tower 20 第20座第2區 16至23樓， 25至33樓及 35至38樓E室
	Oven 焗爐	Miele			M6262	M6262	M6262	M6262	M8261	M8261	M8261	M8261	M8261	M8261
	Steamer 電蒸爐	Miele	DG 6401	DG 6401	DG 6401	DG 6401	DG 6401	DG 6401	DG 5061	DG 4060	DG 4060			
	Wine Cooler 紅酒冷藏櫃	Miele			KWT 4154 UG-1									
	Washer / Dryer 洗衣乾衣機	Miele	WT2789 i WPMLW	WT2789 i WPMLW	WT2789 i WPMLW	WT2789 i WPMLW	WT2789 i WPMLW	WT2789 i WPMLW	WDi1641HK	WDi1641HK	WDi1641HK	WDi1641HK	WDi1641HK	WDi1641HK
	Refrigerator 雪櫃	Subzero			I650	I611	I650	I650	700 Tci	I650	I650			
	Refrigerator 雪櫃	Siemens 西門子										KI34NP60	KI34NP60	KI34NP60
	Dishwasher 洗碗碟機	Miele	G6160SCVi	G6160SCVi	G6160SCVi									
	Dishwasher 洗碗碟機	Miele												
	LED iDTV in Kitchen 廚房液晶電視內置 高清接收器	Oolaa			KTV 2.0	KTV 2.0	KTV 2.0	KTV 2.0						
	LCD TV in Kitchen 廚房液晶電視	JSA							B51002D	B51002D	B51002D	B51002D	B51002D	B51002D
Electric Water Heater 電熱水爐	Stiebel Eltron 斯寶亞創	(Supplied from Toilet inside Store) (由儲物室洗 手間供應)	(Supplied from Toilet inside Store) (由儲物室洗 手間供應)	(Supplied from Toilet inside Store) (由儲物室洗 手間供應)	DT 6	(Supplied from Toilet inside Store) (由儲物室洗 手間供應)	(Supplied from Toilet inside Store) (由儲物室洗 手間供應)	DT 6	(Supplied from Toilet inside Store) (由儲物室洗 手間供應)	(Supplied from Toilet inside Store) (由儲物室洗 手間供應)	DT 6	DT 6	DT 6	
Bathroom 浴室	LED iDTV in Bathroom 浴室液晶電視內 置高清接收器	Oolaa	BTV10(MF)	BTV10(MF)	BTV10(MF)	BTV10(MF)	BTV10(MF)	BTV10(MF)						
	LCD TV in Bathroom 浴室液晶電視	COMEMON							TM102W	TM102W	TM102W	TM102W	TM102W	
	Gas Water Heater 煤氣熱水爐	TGC					(Supplied from Kitchen) (由廚房供應)			(Supplied from Kitchen) (由廚房供應)	(Supplied from Kitchen) (由廚房供應)	(Supplied from Kitchen) (由廚房供應)	(Supplied from Kitchen) (由廚房供應)	
	Electric Water Heater 電熱水爐	Stiebel Eltron 斯寶亞創	(Supplied from Bathroom of Bedroom 2) (由睡房2的浴 室供應)	(Supplied from Bathroom of Bedroom 2) (由睡房2的浴 室供應)	(Supplied from Bathroom of Bedroom 2) (由睡房2的浴 室供應)		DHE 21 DHE 27 (for Bathroom of Bedroom 3) (供應睡房3 的浴室)	DHE 21	DHE 27					

# Fittings, finishes and appliances

裝置、裝修物料及設備

## Appliances Schedule 設備說明

		Flat A, 90/F, Zone 1, Tower 20 第20座第1區90樓A室	Flat A, 87/F-89/F, Zone 1, Tower 20 第20座第1區87至89樓A室	Flat A, 67/F-73/F, 75/F-83/F and 85/F-86/F, Zone 1, Tower 20 第20座第1區67至73樓, 75至83樓及85至86樓A室	Flat B, 67/F-73/F, 75/F-83/F and 85/F-90/F, Zone 1, Tower 20 第20座第1區67至73樓, 75至83樓及85至90樓B室	Flat C, 67/F-73/F, 75/F-83/F and 85/F-90/F, Zone 1, Tower 20 第20座第1區67至73樓, 75至83樓及85至90樓C室	Flat D, 67/F-73/F, 75/F-83/F and 85/F-90/F, Zone 1, Tower 20 第20座第1區67至73樓, 75至83樓及85至90樓D室	Flat A, 16/F-23/F, 25/F-33/F and 35/F-36/F, Zone 2, Tower 20 第20座第2區16至23樓, 25至33樓及35至36樓A室	Flat B, 38/F, Zone 2, Tower 20 第20座第2區38樓B室	Flat B, 15/F-23/F, 25/F-33/F and 35/F-36/F, Zone 2, Tower 20 第20座第2區15至23樓, 25至33樓及35至36樓B室	Flat C, 12/F, 15/F-23/F, 25/F-33/F, and 35/F-37/F, Zone 2, Tower 20 第20座第2區12樓, 15至23樓, 25至33樓及35至37樓C室	Flat D, 12/F, 15/F-23/F, 25/F-33/F, and 35/F-37/F, Zone 2, Tower 20 第20座第2區12樓, 15至23樓, 25至33樓及35至37樓D室	Flat E, 16/F-23/F, 25/F-33/F and 35/F-38/F, Zone 2, Tower 20 第20座第2區16至23樓, 25至33樓及35至38樓E室	
Location 位置	Appliance 設備	Brand 品牌	Model No. 型號											
Bathroom 浴室	Mirror Defogster 鏡面除霧器	BMB	HKA-179A	HKA-179A	HKA-179A	HKA-179A	HKA-179A	HKA-179A	HKA-179A	HKA-179A	HKA-179A	HKA-179A	HKA-179A	HKA-179A
	Ventilation Fan 抽氣扇	Ostberg												
	Ventilation Fan 抽氣扇	Panasonic 樂聲牌	FV-15NS1H (installed in Living & Dinning Room) (在飯客廳)	FV-15NS1H (installed in Living & Dinning Room) (在飯客廳)	FV-15NS1H (installed in Store Room) (在儲物室)	FV-15NS1H	FV-15NS1H	FV-15NS1H	FV-15NS1H	FV-18NS1H	FV-15NS1H	FV-15NS1H (installed in Kitchen) (在廚房)	FV-15NS1H (installed in Kitchen) (在廚房)	FV-18NS1H (installed in pipe duct) (在管道槽)
	Multifunctional Dehumidifier 多功能抽濕機	Cold Magic 高美	CDH22R2	CDH22R2	CDH22R2	CDH22R2	CDH22R2	CDH22R2	CDH22R2	CDH22R2	CDH22R2	CDH22R2	CDH22R2	CDH22R2
Bathroom inside Bedroom 睡房內的浴室			Bathroom of Bedroom 2 睡房2的浴室	Bathroom of Bedroom 2 睡房2的浴室	Bathroom of Bedroom 2 睡房2的浴室		Bathroom of Bedroom 4 睡房4的浴室	Bathroom of Bedroom 4 睡房4的浴室		Bathroom of Bedroom 4 睡房4的浴室				
	LED iDTV in Bathroom 浴室液晶電視內置高清接收器	Oolaa	BTV10(MF)	BTV10(MF)	BTV10(MF)		BTV10(MF)	BTV10(MF)						
	LCD TV in Bathroom 浴室液晶電視	COMEMON								TM102W				
	Gas Water Heater 煤氣熱水爐	TGC					(Supplied from Kitchen) (由廚房供應)							
	Electric Water Heater 電熱水爐	Stiebel Eltron 斯寶亞創	DHE 21 DHE 21 (for Bathroom) (供應浴室)	DHE 21 DHE 21 (for Bathroom) (供應浴室)	DHE 21 DHE 21 (for Bathroom) (供應浴室)			DHE 21		DHE 21				
	Mirror Defogster 鏡面除霧器	BMB	HKA-179A	HKA-179A	HKA-179A		HKA-179A	HKA-179A		HKA-179A				
	Ventilation Fan 抽氣扇	Ostberg												
	Ventilation Fan 抽氣扇	Panasonic	FV-15NS1H	FV-15NS1H	FV-15NS1H		FV-15NS1H	FV-15NS1H		FV-15NS1H				
	Multifunctional Dehumidifier 多功能抽濕機	Cold Magic 高美												

# Fittings, finishes and appliances

裝置、裝修物料及設備

## Appliances Schedule 設備說明

Location 位置		Appliance 設備	Brand 品牌	Model No. 型號												
Bathroom inside Bedroom 睡房內的浴室				Bathroom of Bedroom 4 睡房4的浴室	Bathroom of Bedroom 4 睡房4的浴室	Bathroom of Bedroom 4 睡房4的浴室	Bathroom of Bedroom 2 睡房2的浴室	Bathroom of Bedroom 3 睡房3的浴室	Bathroom of Bedroom 3 睡房3的浴室	Bathroom of Bedroom 1 睡房1的浴室	Bathroom of Bedroom 1 睡房1的浴室	Bathroom of Bedroom 1 睡房1的浴室	Bathroom of Bedroom 2 睡房2的浴室	Bathroom of Bedroom 2 睡房2的浴室	Bathroom of Bedroom 2 睡房2的浴室	
		LED iDTV in Bathroom 浴室液晶電視內置高清接收器	Oolaa	BTV19(MF-WLS)	BTV19(MF-WLS)	BTV19(MF-WLS)	BTV19(MF-WLS)	BTV19(MF-WLS)	BTV17(MF-WLS)							
		LCD TV in Bathroom 浴室液晶電視	Toshiba 東芝							20V 300H	20V 300H	20V 300H	20V 300H	20V 300H	20V 300H	20V 300H
		Electric Water Heater 電熱水爐	Stiebel Eltron 斯寶亞創	DHE 27	DHE 27	DHE 27	DHE 27	(Supplied from Bathroom) (由浴室供應)	DHE 27	DHE 27	DHE 27	DHE 27	DHE 27	DHE 27	DHE 27	DHE 27
		Mirror Defogster 鏡面除霧器	BMB	HKA-179A	HKA-179A	HKA-179A	HKA-179A	HKA-179A	HKA-179A	HKA-179A	HKA-179A	HKA-179A	HKA-179A	HKA-179A	HKA-179A	HKA-179A
		Ventilation Fan 抽氣扇	Ostberg													
		Ventilation Fan 抽氣扇	Panasonic 樂聲牌	FV-18NS1H	FV-18NS1H	FV-18NS1H	FV-18NS1H	FV-18NS1H	FV-18NS1H	FV-18NF1H	FV-18NS1H	FV-18NS1H	FV-18NS1H	FV-18NS1H	FV-18NS1H	FV-18NS1H
Toilet inside Living/Dining 客廳洗手間		Electric Water Heater 電熱水爐	Stiebel Eltron 斯寶亞創													
		Mirror Defogster 鏡面除霧器	BMB													
		Ventilation Fan 抽氣扇	Ostberg													
		Ventilation Fan 抽氣扇	Panasonic 樂聲牌													
Toilet inside Store 儲物室洗手間		Electric Water Heater 電熱水爐	Stiebel Eltron 斯寶亞創	HDB 21	HDB 21	HDB 21		HDB 21	HDB 21	HDB 21	HDB 21	HDB 21				
		Ventilation Fan 抽氣扇	Ostberg													
		Ventilation Fan 抽氣扇	Vortice													
		Ventilation Fan 抽氣扇	Panasonic 樂聲牌	FV-12NS1H	FV-12NS1H	FV-12NS1H		FV-12NS1H	FV-12NS1H	FV-12NS1H	FV-12NS1H	FV-12NS1H	FV-12NS1H			



# Fittings, finishes and appliances

裝置、裝修物料及設備

## Appliances Schedule 設備說明

			Flat A, 91/F, Zone 1, Tower 21 第21座第1區 91樓A室	Flat A, 90/F, Zone 1, Tower 21 第21座第1區 90樓A室	Flat A, 82/F, Zone 1, Tower 21 第21座第1區 82樓A室	Flat B, 91/F, Zone 1, Tower 21 第21座第1區 91樓B室	Flat C, 91/F, Zone 1, Tower 21 第21座第1區 91樓C室	Flat A, 81/F, Zone 3, Tower 21 第21座第3區 81樓A室	Flat B, 81/F, Zone 3, Tower 21 第21座第3區 81樓B室	
Location 位置	Appliance 設備	Brand 品牌	Model No. 型號							
Living/Dining Room/ Bedroom/Store/ Kitchen/Bathroom 客飯廳、睡房、 儲物室、廚房及 浴室	Water Cooled Split Type Air-conditioner 水冷分體式冷氣機	Indoor Unit 室內機	MCC015MR MCC020MR MCC025MR MCC030MR MWM010GR MWM020GR	MCC015MR MCC020MR MCC025MR MWM010GR MWM015GR	MCC015MR MCC020MR MCC025MR MCC030MR MWM010GR MWM015GR	MCC015MR MCC020MR MCC025MR MCC030MR MWM010GR MWM015GR	MCC015MR MCC020MR MCC030MR MWM010GR MWM015GR MWM020GR	MCC015MR MCC025MR MCC030MR MWM010GR	MCC015MR MCC025MR MCC030MR MWM010GR MWM015GR	
		Outdoor Unit 室外機	MWSC015BR MWSC020BR MWSC025BR MWSC030BR MWSC010BR	MWSC015BR MWSC020BR MWSC025BR MWSC010BR	MWSC015BR MWSC020BR MWSC025BR MWSC030BR MWSC010BR	MWSC015BR MWSC020BR MWSC025BR MWSC030BR MWSC010BR	MWSC015BR MWSC020BR MWSC025BR MWSC030BR MWSC010BR	MWSC015BR MWSC020BR MWSC025BR MWSC030BR MWSC010BR	MWSC015BR MWSC025BR MWSC030BR MWSC010BR	MWSC015BR MWSC025BR MWSC030BR MWSC010BR
	Air Cooled Split Type Air-conditioner 風冷分體式冷氣機	Indoor Unit 室內機	Daikin 大金							
		Outdoor Unit 室外機								
		Indoor Unit 室內機	Panasonic 樂聲牌							
		Outdoor Unit 室外機								
Living/Dining Room 客飯廳	Exhaust Hood 抽油煙機	Miele	DA420V	DA 420V	DA420V					
	Refrigerator 雪櫃	Subzero	I650G	I650G	I650G					
	Refrigerator 雪櫃	Siemens 西門子	KU15RA40	KU15R441	KU15RA40		KU15RA40			
	Induction Hob (Double-burner) 電磁爐 (雙爐頭)	Miele	KM-418	KM 418-1	KM-418					
	Electric BBQ Grill 電燒烤爐	Miele	KM-411-3	KM 411-3	KM-411-3					
	Microwave Oven 微波爐	Miele	M8261	M8261	M8261					
	Oven 焗爐	Miele	H4900B		H4900B					
	Steamer 電蒸爐	Miele	DG 4060	DG 4060	DG 4060					
	Coffee Maker 咖啡機	Miele	CVA4060	CVA4060						
	Wine Cooler 紅酒冷藏櫃	Miele	KWT 4154 UG	KWT 4154 UG-1	KWT 4154 UG		KWT 4154 UG-1			
	Dishwasher 洗碗碟機	Miele	G1833 SCi	G1833 SCi	G1833 SCi					
	Washer / Dryer 洗衣乾衣機	Miele		WT 2679i WPM	WT 2679 I WPM					
	LCD TV 液晶電視	Sharp 聲寶			LC-19A35H					
	LCD TV 液晶電視	Sony 索尼		KLV-20S400A						
Electric Water Heater 電熱水爐	斯寶亞創 Stiebel Eltron									

# Fittings, finishes and appliances

裝置、裝修物料及設備

## Appliances Schedule 設備說明

		Flat A, 91/F, Zone 1, Tower 21 第21座第1區 91樓A室	Flat A, 90/F, Zone 1, Tower 21 第21座第1區 90樓A室	Flat A, 82/F, Zone 1, Tower 21 第21座第1區 82樓A室	Flat B, 91/F, Zone 1, Tower 21 第21座第1區 91樓B室	Flat C, 91/F, Zone 1, Tower 21 第21座第1區 91樓C室	Flat A, 81/F, Zone 3, Tower 21 第21座第3區 81樓A室	Flat B, 81/F, Zone 3, Tower 21 第21座第3區 81樓B室	
Location 位置	Appliance 設備	Brand 品牌	Model No. 型號						
Kitchen 廚房	Gas Hob (Single-burner) 煤氣煮食爐 (單爐頭)	Miele	KM-416-3	KM-416-3	KM-416-3	KM-416-3	KM 416	KM-416-3	KM-416-3
	Gas Hob (Double-burner) 煤氣煮食爐 (雙爐頭)	Miele	KM-405-3	KM 405-3	KM-405-3	KM-405-3	KM 405	KM-405-3	KM-405-3
	Induction Hob (Double-burner) 電磁爐 (雙爐頭)	Miele							
	Electric BBQ Grill 電燒烤爐	Miele				KM-411-3	KM-411-3	KM-411-3	KM-411-3
	Exhaust Hood 抽油煙機	Miele	DA422-4	DA 422-4	DA422	DA422	DA 422-4	DA422	DA422
	Exhaust Fan (Mounted above false ceiling) 抽氣扇 (置於假天花上)	Ostberg	LPK 200B	LPK 200B	LPK 200B	LPK 200B	LPK 200B	LPK 200B	LPK 200B
	Exhaust Fan (Mounted above false ceiling) 抽氣扇 (置於假天花上)	Panasonic 樂聲牌							
	Gas Water Heater 煤氣熱水爐	TGC				NJW160TFQL (for Bathroom of Bedroom 4) (供應睡房4的浴室)			
	Microwave Oven 微波爐	Miele				M8261	M8261	M8261	M8261
	Oven 焗爐	Miele		H4900B		H4900B	H4900B	H4900B	H4900B
	Steamer 電蒸爐	Miele				DG 4060	DG 4060	DG 4060	DG 4060
	Coffee Maker 咖啡機	Miele					CVA4060		
	Wine Cooler 紅酒冷藏櫃	Miele				KWT 4154 UG			
	Washer / Dryer 洗衣乾衣機	Miele	WT 2679 I WPM	WT 2679i WPM		WT 2679 I WPN	WT 2679 I WPM	WT 2679 i WPM	WT 2679 i WPM
	Refrigerator 雪櫃	Subzero				I650G	I650	I650	I661
	Refrigerator 雪櫃	Siemens 西門子							
	Dishwasher 洗碗碟機	Miele				G1833 SCi	G1833 SCi		
	LCD TV in Kitchen 廚房液晶體電視	JSA				B51002D		B51002D	B51002D
LCD TV in Kitchen 廚房液晶體電視	Sharp 聲寶								
Electric Water Heater 電熱水爐	Stiebel Eltron 斯寶亞創	(Supplied from Toilet inside Store) (由儲物室洗手間供應)	(Supplied from Toilet inside Store) (由儲物室洗手間供應)	(Supplied from Toilet inside Store) (由儲物室洗手間供應)	DT 6	(Supplied from Toilet inside Store) (由儲物室洗手間供應)	(Supplied from Toilet inside Store) (由儲物室洗手間供應)	DT 6	

# Fittings, finishes and appliances

裝置、裝修物料及設備

## Appliances Schedule 設備說明

		Flat A, 91/F, Zone 1, Tower 21 第21座第1區 91樓A室	Flat A, 90/F, Zone 1, Tower 21 第21座第1區 90樓A室	Flat A, 82/F, Zone 1, Tower 21 第21座第1區 82樓A室	Flat B, 91/F, Zone 1, Tower 21 第21座第1區 91樓B室	Flat C, 91/F, Zone 1, Tower 21 第21座第1區 91樓C室	Flat A, 81/F, Zone 3, Tower 21 第21座第3區 81樓A室	Flat B, 81/F, Zone 3, Tower 21 第21座第3區 81樓B室	
Location 位置	Appliance 設備	Brand 品牌	Model No. 型號						
Bathroom 浴室	LCD TV in Bathroom 浴室液晶電視	COMEMON			TM102W	TM102W		TM102W	TM102W
	Gas Water Heater 煤氣熱水爐	TGC							
	Electric Water Heater 電熱水爐	Stiebel Eltron 斯寶亞創	DHE 21 SL	DHE 21 SL	DHE 21	DHE 21 SL		DHE 21	DHE 21
	Mirror Defroster 鏡面除霧器	BMB	HKA-179A		HKA-179A	HKA-179A		HKA-179A	HKA-179A
	Ventilation Fan 抽氣扇	Ostberg	RFE 140A	RFE 140A	RFE 140A	RFE 140A		RFE 140A (installed in A/C Room) (在冷氣機機房)	RFE 140A (installed in A/C Room) (在冷氣機機房)
	Ventilation Fan 抽氣扇	Panasonic 樂聲牌							
	Multifunctional Dehumidifier 多功能抽濕機	Cold Magic 高美	CDH22R2	CDH22R2	CDH22R2	CDH22R2		CDH22R2	CDH22R2
Bathroom inside Bedroom 睡房內的浴室			Bathroom of Bedroom 4 睡房4的浴室	Bathroom of Bedroom 4 睡房4的浴室	Bathroom of Bedroom 4 睡房4的浴室	Bathroom of Bedroom 4 睡房4的浴室		Bathroom of Bedroom 3 睡房3的浴室	
	LCD TV in Bathroom 浴室液晶電視	COMEMON		TM102W	TM102W	TM102W		TM102W	
	LCD TV in Bathroom 浴室液晶電視	COSTEL	CVB170						
	Gas Water Heater 煤氣熱水爐	TGC				(Supplied from Kitchen) (由廚房供應)			
	Electric Water Heater 電熱水爐	Stiebel Eltron 斯寶亞創	DHE 21 SL	DHE 21 SL	DHE 21			DHE 27	
	Mirror Defroster 鏡面除霧器	BMB	HKA-179A		HKA-179A	HKA-179A		HKA-179A	
	Ventilation Fan 抽氣扇	Ostberg	RFE 140A	RFE 140A	RFE 140A	RFE 140A (installed in Kitchen) (在廚房)		RFE 140B	
	Ventilation Fan 抽氣扇	Panasonic 樂聲牌							
Multifunctional Dehumidifier 多功能抽濕機	Cold Magic 高美								



# Fittings, finishes and appliances

裝置、裝修物料及設備

## Appliances Schedule 設備說明

			Flat A, 91/F, Zone 1, Tower 21 第21座第1區 91樓A室	Flat A, 90/F, Zone 1, Tower 21 第21座第1區 90樓A室	Flat A, 82/F, Zone 1, Tower 21 第21座第1區 82樓A室	Flat B, 91/F, Zone 1, Tower 21 第21座第1區 91樓B室	Flat C, 91/F, Zone 1, Tower 21 第21座第1區 91樓C室	Flat A, 81/F, Zone 3, Tower 21 第21座第3區 81樓A室	Flat B, 81/F, Zone 3, Tower 21 第21座第3區 81樓B室
Location 位置	Appliance 設備	Brand 品牌	Model No. 型號						
Bathroom inside Bedroom 睡房內的浴室					Bathroom of Bedroom 3 睡房3的浴室		Bathroom of Bedroom 3 睡房3的浴室		
	LCD TV in Bathroom 浴室液晶電視	COMEMON			TM102W				
	LCD TV in Bathroom 浴室液晶電視	LG					22LM20R-TA		
	Electric Water Heater 電熱水爐	Stiebel Eltron 斯寶亞創			DHE 27		DHE 21 SL		
	Mirror Defroster 鏡面除霧器	BMB			HKA-179A				
	Ventilation Fan 抽氣扇	Ostberg			LPK 200A		RFE 140A		
	Ventilation Fan 抽氣扇	Panasonic 樂聲牌							
	Multifunctional Dehumidifier 多功能抽濕機	Cold Magic 高美					CDH22R2		
Bathroom inside Bedroom 睡房內的浴室			Bathroom of Bedroom 3 睡房3的浴室	Bathroom of Bedroom 3 睡房3的浴室		Bathroom of Bedroom 3 睡房3的浴室	Bathroom of Bedroom 4 睡房4的浴室		Bathroom of Bedroom 1 睡房1的浴室
	LCD TV in Bathroom 浴室液晶電視	Toshiba 東芝							20V300H
	LCD TV in Bathroom 浴室液晶電視	COMEMON		TM102W		TM102W			
	LCD TV in Bathroom 浴室液晶電視	COSTEL	CVB103						
	Electric Water Heater 電熱水爐	Stiebel Eltron 斯寶亞創	DHE 27	DHE 27		DHE 27	DHE 21 SL		DHE 27
	Mirror Defroster 鏡面除霧器	BMB	HKA-179A	HKA-179A		HKA-179A			HKA-179A
	Ventilation Fan 抽氣扇	Ostberg	LPK 200A	LPK 200A		RFE 140B	RFE 140A		RFE 140B (installed in A/C Room) (在冷氣機機房)
Ventilation Fan 抽氣扇	Panasonic 樂聲牌								
Bathroom inside Bedroom 睡房內的浴室							Bathroom of Bedroom 5 睡房5的浴室		
	LCD TV in Bathroom 浴室液晶電視	LG					20LH20R-TA		
	Electric Water Heater 電熱水爐	Stiebel Eltron 斯寶亞創					DHE 27		
	Ventilation Fan 抽氣扇	Ostberg					RFE 140B		

# Fittings, finishes and appliances

裝置、裝修物料及設備

## Appliances Schedule 設備說明

		Flat A, 91/F, Zone 1, Tower 21 第21座第1區 91樓A室	Flat A, 90/F, Zone 1, Tower 21 第21座第1區 90樓A室	Flat A, 82/F, Zone 1, Tower 21 第21座第1區 82樓A室	Flat B, 91/F, Zone 1, Tower 21 第21座第1區 91樓B室	Flat C, 91/F, Zone 1, Tower 21 第21座第1區 91樓C室	Flat A, 81/F, Zone 3, Tower 21 第21座第3區 81樓A室	Flat B, 81/F, Zone 3, Tower 21 第21座第3區 81樓B室
Location 位置	Appliance 設備	Brand 品牌	Model No. 型號					
Bathroom inside Study 書房內的浴室	Electric Water Heater 電熱水爐	Stiebel Eltron 斯寶亞創	HDB 21				DHE 21 SL	
	Mirror Defroster 鏡面除霧器	BMB	HKA-179A					
	LCD TV in Bathroom 浴室液晶電視	COMEMON						
	Ventilation Fan 抽氣扇	Ostberg	RFE 140A				RFE 140A	
	Ventilation Fan 抽氣扇	Panasonic 樂聲牌						
Toilet inside Study 書房內的洗手間	Electric Water Heater 電熱水爐	Stiebel Eltron 斯寶亞創				DT 6	DT 6	DT 6
	Mirror Defroster 鏡面除霧器	BMB				HKA-179A	HKA-179A	HKA-179A
	Ventilation Fan 抽氣扇	Ostberg				RFE 140A	RFE 140A	REF 140A
	Ventilation Fan 抽氣扇	Panasonic 樂聲牌						
Toilet inside Living/Dinning Room 客飯廳的洗手間	Electric Water Heater 電熱水爐	Stiebel Eltron 斯寶亞創		DT 6			DHE 21	
	Mirror Defroster 鏡面除霧器	BMB						
	Ventilation Fan 抽氣扇	Ostberg		RFE 140A			RFE 140A	
	Ventilation Fan 抽氣扇	Panasonic 樂聲牌						
Toilet inside Store 儲物室洗手間	Electric Water Heater 電熱水爐	Stiebel Eltron 斯寶亞創	HDB 21	HDB 21	HDB 21	HDB 21	HDB 21	HDB 21
	Ventilation Fan 抽氣扇	Ostberg	RFE 140A	RFE 140A	RFE 140A	RFE 140A (installed in Kitchen) (在廚房)	RFE 140A (installed in A/C Room) (在冷氣機機房)	RFE 140A (installed in A/C Room) (在冷氣機機房)
	Ventilation Fan 抽氣扇	Panasonic 樂聲牌						

# Fittings, finishes and appliances

裝置、裝修物料及設備

## Appliances Schedule 設備說明

			Flat C, 80/F, Zone 3, Tower 21 第21座第3區 80樓C室	Flat C, 79/F, Zone 3, Tower 21 第21座第3區 79樓C室	Flat D, 81/F, Zone 3, Tower 21 第21座第3區 81樓D室	Flat A, 12/F, Zone 6, Tower 21 第21座第6區 12樓A室	Flat B, 37/F, Zone 6, Tower 21 第21座第6區 37樓B室	Flat B, 12/F, Zone 6, Tower 21 第21座第6區 12樓B室	Flat C, 38/F, Zone 6, Tower 21 第21座第6區 38樓C室	
Location 位置	Appliance 設備	Brand 品牌	Model No. 型號							
Living/Dining Room/ Bedroom/Store/ Kitchen/Bathroom 客飯廳、睡房、 儲物室、廚房及 浴室	Water Cooled Split Type Air-conditioner 水冷分體式冷氣機	Indoor Unit 室內機	MCC015MR MCC020MR MCC025MR MCC030MR MWM010GR MWM015GR MWM020GR	MCC015MR MCC020MR MCC025MR MWM010GR	MCC015MR MCC020MR MCC025MR MCC030MR MWM010GR					
		Outdoor Unit 室外機	MWSC015BR MWSC020BR MWSC025BR MWSC030BR MWSC010BR	MWSC015BR MWSC020BR MWSC025BR MWSC010BR	MWSC015BR MWSC020BR MWSC025BR MWSC030BR MWSC010BR					
	Air Cooled Split Type Air-conditioner 風冷分體式冷氣機	Indoor Unit 室內機	Daikin 大金				FDYB35KAVE FDYB60KAVE FTXD25DVMA	FDYB35KAVE FTXD25DVMA FTXD35DVMA	FDYB35KAVE FDYB50KAVE FTXD25DVMA	FDYB35KAVE FDYB50KAVE FTXD25DVMA
		Outdoor Unit 室外機					RY35FV1A RY60GAV1A RXD25DVMA	RY35FV1A RXD25DVMA RXD35DVMA	RY35FV1A RY50GV1A RXD25DVMA	RY35FV1A RY50GV1A RXD25DVMA
		Indoor Unit 室內機	Panasonic 樂聲牌							
		Outdoor Unit 室外機								
	Living/Dining Room 客飯廳	Exhaust Hood 抽油煙機	Miele	DA420V						
		Refrigerator 雪櫃	Subzero	I650G						
Refrigerator 雪櫃		Siemens 西門子								
Induction Hob (Double-burner) 電磁爐 (雙爐頭)		Miele	KM-418							
Electric BBQ Grill 電燒烤爐		Miele	KM-411-3							
Microwave Oven 微波爐		Miele								
Oven 焗爐		Miele								
Steamer 電蒸爐		Miele								
Coffee Maker 咖啡機		Miele								
Wine Cooler 紅酒冷藏櫃		Miele	KWT 4154 UG							
Dishwasher 洗碗碟機		Miele								



# Fittings, finishes and appliances

裝置、裝修物料及設備

## Appliances Schedule 設備說明

		Flat C, 80/F, Zone 3, Tower 21 第21座第3區 80樓C室	Flat C, 79/F, Zone 3, Tower 21 第21座第3區 79樓C室	Flat D, 81/F, Zone 3, Tower 21 第21座第3區 81樓D室	Flat A, 12/F, Zone 6, Tower 21 第21座第6區 12樓A室	Flat B, 37/F, Zone 6, Tower 21 第21座第6區 37樓B室	Flat B, 12/F, Zone 6, Tower 21 第21座第6區 12樓B室	Flat C, 38/F, Zone 6, Tower 21 第21座第6區 38樓C室
Location 位置	Appliance 設備	Brand 品牌	Model No. 型號					
Living/Dining Room 客飯廳	Washer / Dryer 洗衣乾衣機	Miele						
	LCD TV 液晶電視	Sharp 聲寶						
	LCD TV 液晶電視	Sony 索尼						
	Electric Water Heater 電熱水爐	斯寶亞創 Stiebel Eltron	DT 6					
Kitchen 廚房	Gas Hob (Single-burner) 煤氣煮食爐 (單爐頭)	Miele	KM-416-3	KM-416-3	KM-416-3	KM-416-3	KM-416-3	KM-416-3
	Gas Hob (Double-burner) 煤氣煮食爐 (雙爐頭)	Miele	KM-405-3	KM-405-3	KM-405-3	KM-405-3	KM-405-3	KM-405-3
	Induction Hob (Double-burner) 電磁爐 (雙爐頭)	Miele						
	Electric BBQ Grill 電燒烤爐	Miele		KM-411-3	KM-411-3	KM-411-3	KM-411-3	KM-411-3
	Exhaust Hood 抽油煙機	Miele	DA422-4	DA422	DA422	DA422	DA422	DA422
	Exhaust Fan (Mounted above false ceiling) 抽氣扇 (置於假天花上)	Ostberg	LPK 200B	LPK 200B	LPK 200B	RFE 140B	LPK 200B	RFE 140B
	Exhaust Fan (Mounted above false ceiling) 抽氣扇 (置於假天花上)	Panasonic 樂聲牌						
	Gas Water Heater 煤氣熱水爐	TGC					NJW160TFQL (for Bathroom) (供應浴室)	NJW160TFQL (for Bathroom) (供應浴室)
	Microwave Oven 微波爐	Miele	M8261	M8261	M8261	M8261	M8261	M8261
	Oven 焗爐	Miele	H4900B	H4900B	H4900B	H4900B	H4900B	H4900B
	Steamer 電蒸爐	Miele	DG 4060	DG 4060	DG 4060	DG 4060	DG 4060	DG 4060
	Coffee Maker 咖啡機	Miele						
	Wine Cooler 紅酒冷藏櫃	Miele	KWT 4154 UG	KWT 4154 UG		KMT 4154 UG		
	Washer / Dryer 洗衣乾衣機	Miele	WT 2679 I WPM	WT 2679 I WPM	WT 2679 I WPM	WT 2679 I WPM	WT 2679 I WPM	WT 2679 I WPM
	Refrigerator 雪櫃	Subzero		I650G	I661	I650	I661	I650
	Refrigerator 雪櫃	Siemens 西門子						
	Dishwasher 洗碗碟機	Miele	G1834 SCi			G1834 SCi		
LCD TV in Kitchen 廚房液晶電視	JSA			B51002D	B51002D	B51002D	B51002D	
LCD TV in Kitchen 廚房液晶電視	Sharp 聲寶		LC-20S5H					
Electric Water Heater 電熱水爐	Stiebel Eltron 斯寶亞創	DT 6	DT 6	DT 6	DT 6	(Supplied from Toilet inside Store) (由儲物室洗手間供應)	(Supplied from Toilet inside Store) (由儲物室洗手間供應)	DT 6

# Fittings, finishes and appliances

裝置、裝修物料及設備

## Appliances Schedule 設備說明

		Flat C, 80/F, Zone 3, Tower 21 第21座第3區 80樓C室	Flat C, 79/F, Zone 3, Tower 21 第21座第3區 79樓C室	Flat D, 81/F, Zone 3, Tower 21 第21座第3區 81樓D室	Flat A, 12/F, Zone 6, Tower 21 第21座第6區 12樓A室	Flat B, 37/F, Zone 6, Tower 21 第21座第6區 37樓B室	Flat B, 12/F, Zone 6, Tower 21 第21座第6區 12樓B室	Flat C, 38/F, Zone 6, Tower 21 第21座第6區 38樓C室	
Location 位置	Appliance 設備	Brand 品牌	Model No. 型號						
Bathroom 浴室	LCD TV in Bathroom 浴室液晶電視	COMEMON	TM102W	TM102W	TM102W	TM102W	TM102W	TM102W	
	Gas Water Heater 煤氣熱水爐	TGC					(Supplied from Kitchen) (由廚房供應)	(Supplied from Kitchen) (由廚房供應)	
	Electric Water Heater 電熱水爐	Stiebel Eltron 斯寶亞創	DHE 21	DHE 27	DHE 21	DHE 21			
	Mirror Defroster 鏡面除霧器	BMB		HKA-179A	HKA-179A	HKA-179A	HKA-179A	HKA-179A	
	Ventilation Fan 抽氣扇	Ostberg	RFE 140A (installed in A/C Room) (在冷氣機機房)	RFE 140B (installed in A/C Room) (在冷氣機機房)	RFE 140A (installed in E&M Room) (在機電房)	RFE 140A(Bathroom of Lower Floor) (下層浴室) RFE 140B (Bathroom of Upper Floor) (上層浴室)	RFE 140A	RFE 140A	RFE 140A
	Ventilation Fan 抽氣扇	Panasonic 樂聲牌							
	Multifunctional Dehumidifier 多功能抽濕機	Cold Magic 高美	CDH22R2		CDH22R2	CDH22R2	CDH22R2		
Bathroom inside Bedroom 睡房內的浴室			Bathroom of Bedroom 3 睡房3的浴室	Bathroom of Bedroom 4 睡房4的浴室		Bathroom of Bedroom 1 睡房1的浴室	Bathroom of Bedroom 4 睡房4的浴室		
	LCD TV in Bathroom 浴室液晶電視	COMEMON	TM102W	TM102W		TM102W	TM102W		
	LCD TV in Bathroom 浴室液晶電視	COSTEL							
	Gas Water Heater 煤氣熱水爐	TGC							
	Electric Water Heater 電熱水爐	Stiebel Eltron 斯寶亞創	DHE 27	DHE 21		DHE 27	DHE 21		
	Mirror Defroster 鏡面除霧器	BMB		HKA-179A		HKA-179A	HKA-179A		
	Ventilation Fan 抽氣扇	Ostberg	RFE 140B	RFE 140A		RFE 140B	RFE 140A		
	Ventilation Fan 抽氣扇	Panasonic 樂聲牌							
Multifunctional Dehumidifier 多功能抽濕機	Cold Magic 高美		CDH22R2						

# Fittings, finishes and appliances

裝置、裝修物料及設備

## Appliances Schedule 設備說明

		Flat C, 80/F, Zone 3, Tower 21 第21座第3區 80樓C室	Flat C, 79/F, Zone 3, Tower 21 第21座第3區 79樓C室	Flat D, 81/F, Zone 3, Tower 21 第21座第3區 81樓D室	Flat A, 12/F, Zone 6, Tower 21 第21座第6區 12樓A室	Flat B, 37/F, Zone 6, Tower 21 第21座第6區 37樓B室	Flat B, 12/F, Zone 6, Tower 21 第21座第6區 12樓B室	Flat C, 38/F, Zone 6, Tower 21 第21座第6區 38樓C室	
Location 位置	Appliance 設備	Brand 品牌	Model No. 型號						
Bathroom inside Bedroom 睡房內的浴室			Bathroom of Bedroom 4 睡房4的浴室			Bathroom of Bedroom 4 睡房4的浴室			
	LCD TV in Bathroom 浴室液晶體電視	COMEMON	TM102W			TM102W			
	LCD TV in Bathroom 浴室液晶體電視	LG							
	Electric Water Heater 電熱水爐	Stiebel Eltron 斯寶亞創	DHE 21			DHE 27			
	Mirror Defroster 鏡面除霧器	BMB				HKA-179A			
	Ventilation Fan 抽氣扇	Ostberg	RFE 140A			RFE 140B			
	Ventilation Fan 抽氣扇	Panasonic 樂聲牌							
	Multifunctional Dehumidifier 多功能抽濕機	Cold Magic 高美							
Bathroom inside Bedroom 睡房內的浴室			Bathroom of Bedroom 5 睡房5的浴室	Bathroom of Bedroom 3 睡房3的浴室	Bathroom of Bedroom 3 睡房3的浴室	Bathroom of Bedroom 2 睡房2的浴室	Bathroom of Bedroom 1 睡房1的浴室	Bathroom of Bedroom 1 睡房1的浴室	Bathroom of Bedroom 3 睡房3的浴室
	LCD TV in Bathroom 浴室液晶體電視	Toshiba 東芝	20V300H	20V300H	20V300H	20V300H	20V300H	20V300H	20V300H
	LCD TV in Bathroom 浴室液晶體電視	COMEMON							
	LCD TV in Bathroom 浴室液晶體電視	COSTEL							
	Electric Water Heater 電熱水爐	Stiebel Eltron 斯寶亞創	DHE 27	DHE 27	DHE 27	DHE 27	DHE 27	DHE 27	DHE 27
	Mirror Defroster 鏡面除霧器	BMB		HKA-179A	HKA-179A	HKA-179A	HKA-179A	HKA-179A	HKA-179A
	Ventilation Fan 抽氣扇	Ostberg	LPK 200A	LPK 200A	LPK 200A	RFE 140B	RFE 140B	RFE 140B	RFE 140B
	Ventilation Fan 抽氣扇	Panasonic 樂聲牌							
Bathroom inside Bedroom 睡房內的浴室									
	LCD TV in Bathroom 浴室液晶體電視	LG							
	Electric Water Heater 電熱水爐	Stiebel Eltron 斯寶亞創							
	Ventilation Fan 抽氣扇	Ostberg							