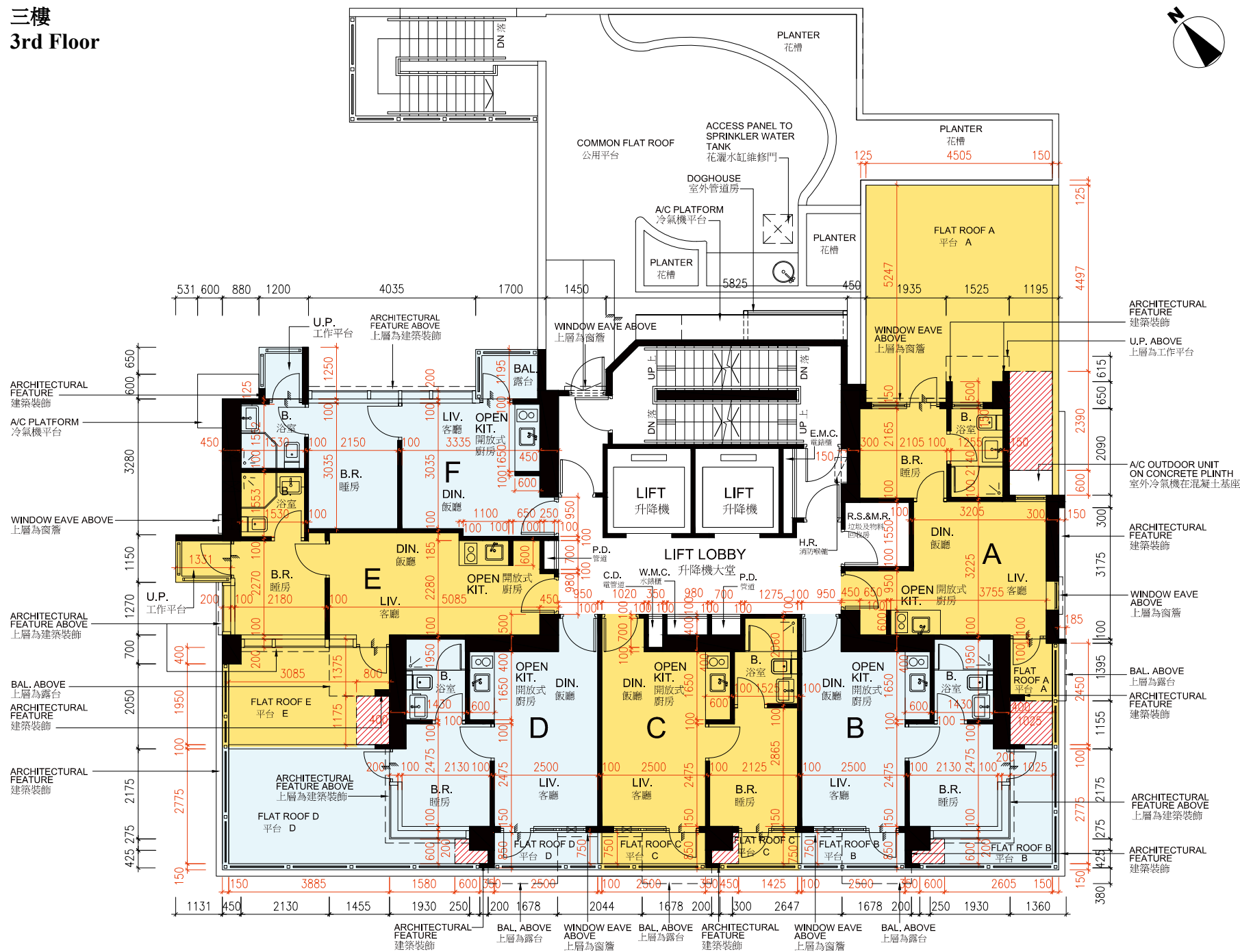


三樓  
3rd Floor



- = 大廈公契界定為公共地方以供吊船維修管道的空間  
Common Areas Under Deed of Mutual Covenant For Pipe Works Maintenance Access By Gondola
- A/C PLATFORM = 冷氣機平台  
Air-conditioner Platform
- B. = 浴室  
Bathroom
- B.R. = 睡房  
Bedroom
- BAL. = 露台  
Balcony
- BAL. ABOVE = 上層為露台  
Balcony above
- C.D. = 電纜導管  
Cable Duct
- COVER OF BAL. = 露台上蓋  
Cover of Balcony
- COVER OF U.P. = 工作平台上蓋  
Cover of Utility Platform
- DIN. = 飯廳  
Dining Room
- E.M.C. = 電錶櫃  
Electric Meter Cabinet
- H.R. = 消防喉轆  
Hose Reel
- LIV. = 客廳  
Living Room
- OPEN KIT. = 開放式廚房  
Open Kitchen
- P.D. = 管道  
Pipe Duct
- R.S. & M.R. = 垃圾及物料回收房  
Refuse Storage & Material Recovery Room
- U.P. = 工作平台  
Utility Platform
- U.P. ABOVE = 上層為工作平台  
Utility Platform above
- W.M.C. = 水錶櫃  
Water Meter Cabinet

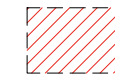
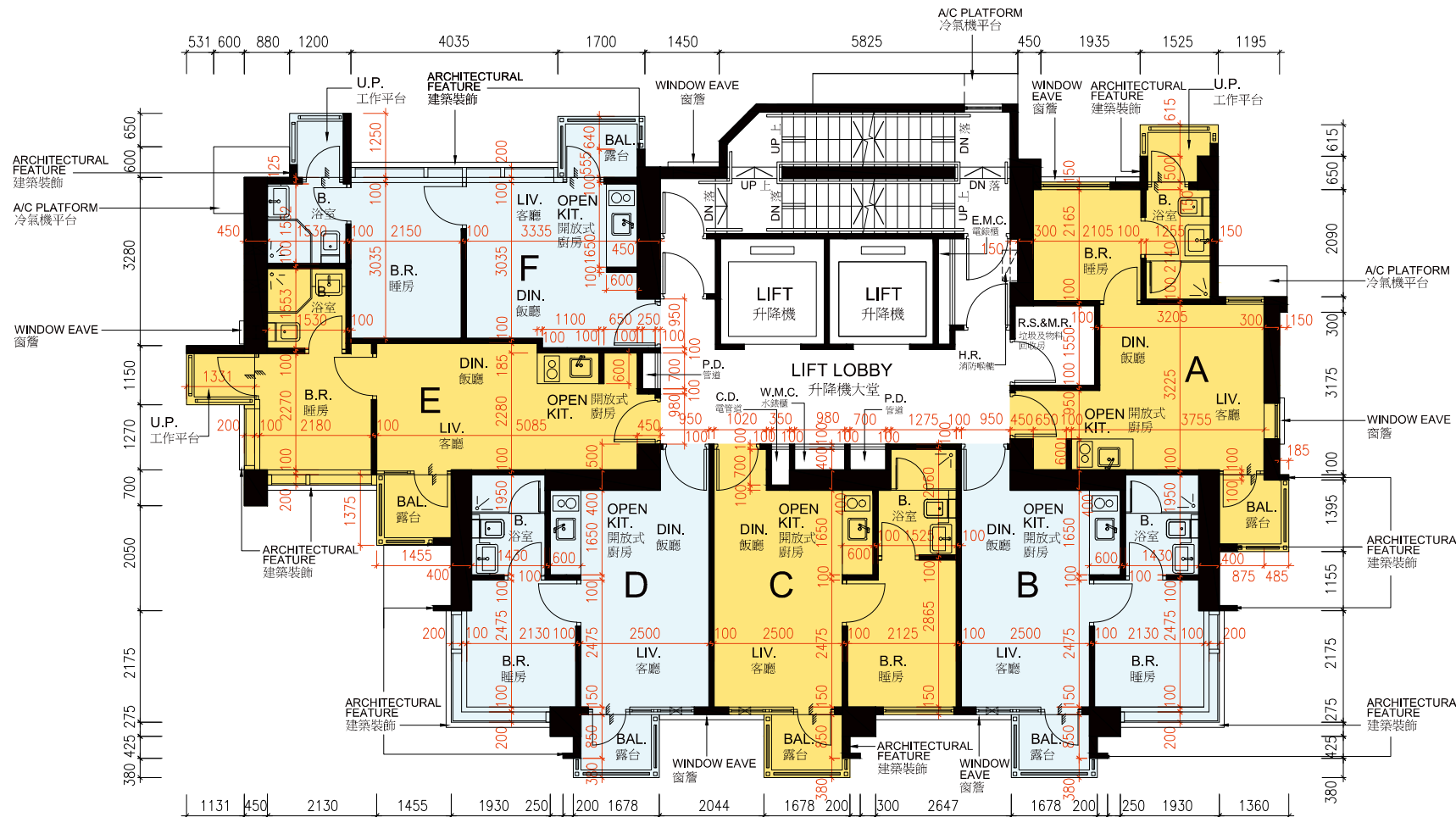


- 備註:
- 因住宅物業的較高樓層的結構牆的厚度遞減，較高層的內部面積，一般比較低層的內部面積稍大。
  - 平面圖所列之數字以毫米標示之建築結構呎吋，並以 2018 年 7 月 26 日經屋宇署批准的建築圖則為基礎。
  - 部分樓層外牆範圍設有建築裝飾。
  - 部分住宅單位的露台及 / 或平台及 / 或工作平台及 / 或冷氣機平台及 / 或外牆或附近設有外露之公用喉管。
  - 部分住宅單位客廳、飯廳、睡房、浴室及開放式廚房天花有跌級樓板及 / 或假天花用以裝置冷氣系統及 / 或其他機電設備。
  - 露台及工作平台為不可封閉地方。
  - 樓面平面圖上所顯示的形象裝置符號，例如浴缸、洗滌盆、坐廁、洗滌盆櫃等乃摘自最新的經批准的建築圖則，只作一般性標誌。

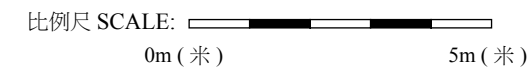
- Notes:
- The internal areas of the residential properties on the upper floor will generally be slightly larger than those on the lower floors because of the reducing thickness of the structural walls on the upper floors.
  - The dimensions in floor plans are all structural dimensions in millimeter which were prepared on the basis of General Building Plan approved by the Buildings Department on 26 July 2018.
  - There may be architectural features on external walls of some of the floors.
  - Common pipes exposed are located at/adjacent to balcony and/or flat roof and/or utility platform and/or air-conditioning platform and/or external wall of some residential units.
  - There are sunken slabs and/or ceiling bulkheads at living rooms, dining rooms, bedrooms, bathrooms, and open kitchens of some residential units for the air-conditioning system and/or M&E service.
  - Balconies and utility platforms are non-enclosed areas.
  - Symbols of fittings shown on the floor plans, such as bathtubs, sink, water closets, sink counter, etc., are architectural symbols retrieved from the latest approved general building plans for general indication only.

每個住宅物業 Each Residential Property	樓層 Floor	單位 Flat					
		A	B	C	D	E	F
層與層之間的高度 (毫米) Floor-to-Floor Height (mm)	3 樓 3/F	3225	3225	3225	3225	3225	3150
		3150	3150	3150	3150	3150	2800
		3050	3050	3050	3050	3050	2800
		2875	2800	2800	2800	2800	
		2800					
樓板 (不包括灰泥) 的厚度 (毫米) Thickness of Floor Slab (excluding plaster) (mm)		125	125	125	125	125	125
		150	150	150	150	175	175

五樓至十二樓、十五樓至二十三樓、二十五樓至二十七樓  
5th-12th, 15th-23rd, 25th-27th Floor



- = 大廈公契界定為公共地方以供吊船維修管道的空間  
Common Areas Under Deed of Mutual Covenant For Pipe Works Maintenance Access By Gondola
- A/C PLATFORM = 冷氣機平台  
Air-conditioner Platform
- B. = 浴室  
Bathroom
- B.R. = 睡房  
Bedroom
- BAL. = 露台  
Balcony
- BAL. ABOVE = 上層為露台  
Balcony above
- C.D. = 電纜導管  
Cable Duct
- COVER OF BAL. = 露台上蓋  
Cover of Balcony
- COVER OF U.P. = 工作平台上蓋  
Cover of Utility Platform
- DIN. = 飯廳  
Dining Room
- E.M.C. = 電錶櫃  
Electric Meter Cabinet
- H.R. = 消防喉轆  
Hose Reel
- LIV. = 客廳  
Living Room
- OPEN KIT. = 開放式廚房  
Open Kitchen
- P.D. = 管道  
Pipe Duct
- R.S. & M.R. = 垃圾及物料回收房  
Refuse Storage & Material Recovery Room
- U.P. = 工作平台  
Utility Platform
- U.P. ABOVE = 上層為工作平台  
Utility Platform above
- W.M.C. = 水錶櫃  
Water Meter Cabinet



備註:

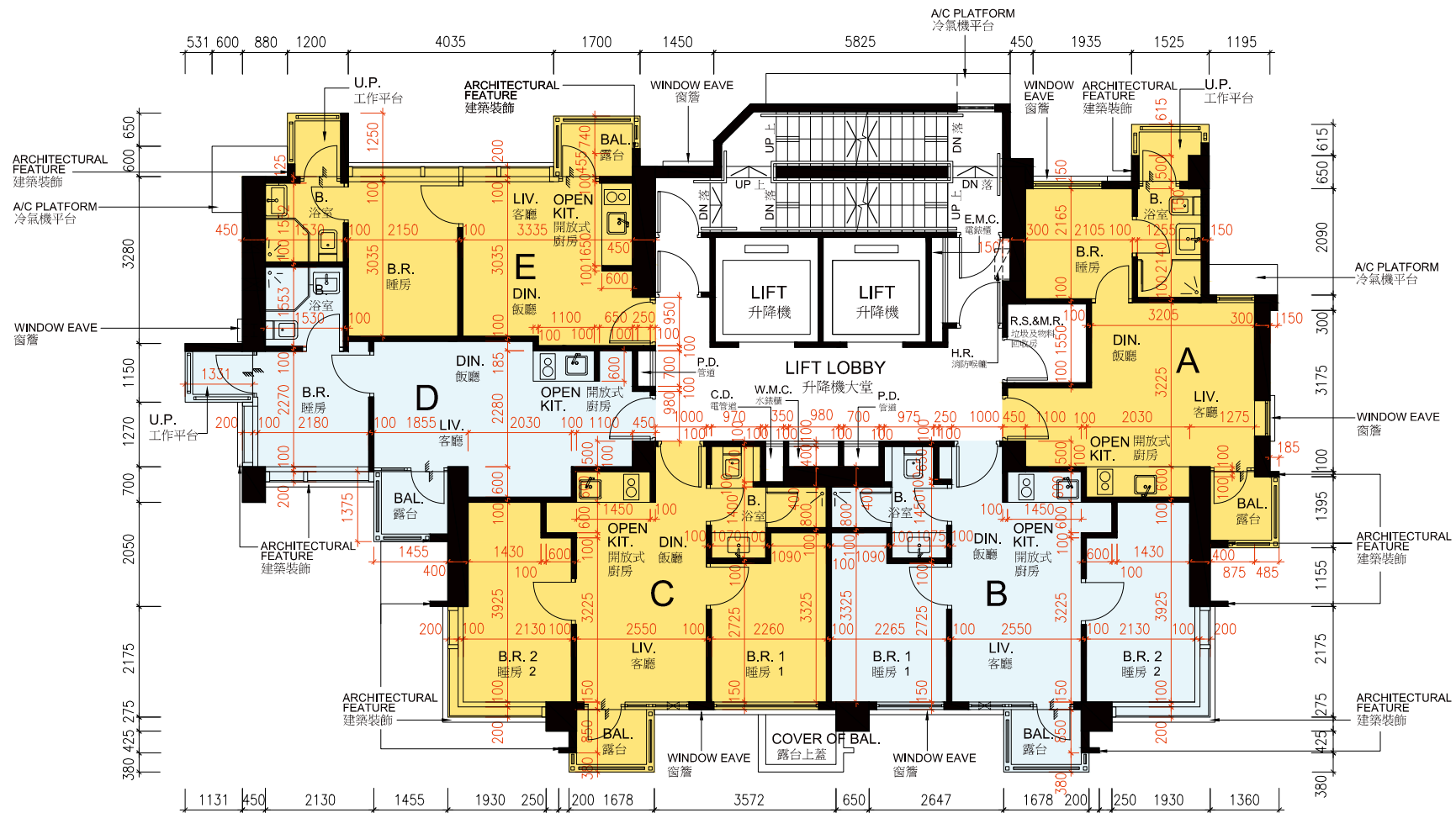
1. 因住宅物業的較高樓層的結構牆的厚度遞減，較高層的內部面積，一般比較低層的內部面積稍大。
2. 平面圖所列之數字以毫米標示之建築結構呎吋，並以 2018 年 7 月 26 日經屋宇署批准的建築圖則為基礎。
3. 部分樓層外牆範圍設有建築裝飾。
4. 部分住宅單位的露台及 / 或平台及 / 或工作平台及 / 或冷氣機平台及 / 或外牆或附近設有外露之公用喉管。
5. 部分住宅單位客廳、飯廳、睡房、浴室及開放式廚房天花有跌級樓板及 / 或假天花用以裝置冷氣系統及 / 或其他機電設備。
6. 露台及工作平台為不可封閉地方。
7. 樓面平面圖上所顯示的形象裝置符號，例如浴缸、洗滌盆、坐廁、洗滌盆櫃等乃摘自最新的經批准的建築圖則，只作一般性標誌。

Notes:

1. The internal areas of the residential properties on the upper floor will generally be slightly larger than those on the lower floors because of the reducing thickness of the structural walls on the upper floors.
2. The dimensions in floor plans are all structural dimensions in millimeter which were prepared on the basis of General Building Plan approved by the Buildings Department on 26 July 2018.
3. There may be architectural features on external walls of some of the floors.
4. Common pipes exposed are located at/adjacent to balcony and/or flat roof and/or utility platform and/or air-conditioning platform and/or external wall of some residential units.
5. There are sunken slabs and/or ceiling bulkheads at living rooms, dining rooms, bedrooms, bathrooms, and open kitchens of some residential units for the air-conditioning system and/or M&E service.
6. Balconies and utility platforms are non-enclosed areas.
7. Symbols of fittings shown on the floor plans, such as bathtubs, sink, water closets, sink counter, etc., are architectural symbols retrieved from the latest approved general building plans for general indication only.

每個住宅物業 Each Residential Property	樓層 Floor	單位 Flat					
		A	B	C	D	E	F
層與層之間的高度 (毫米) Floor-to-Floor Height (mm)	5 樓 - 12 樓, 15 樓 - 23 樓, 25 樓 - 26 樓	3150	3150	3150	3150	3150	3150
樓板 (不包括灰泥) 的厚度 (毫米) Thickness of Floor Slab (excluding plaster) (mm)	5/F-12/F, 15/F-23/F, 25/F-26/F	125 150	125 150	125 150	125 150	125 150 175	125 175
層與層之間的高度 (毫米) Floor-to-Floor Height (mm)	27 樓 27/F	3500 3150 2800	3500 3150 2800	3500 3150 3050 2800	3500 3150 2800	3150	3500 3150
樓板 (不包括灰泥) 的厚度 (毫米) Thickness of Floor Slab (excluding plaster) (mm)		125 150	125 150	125 150	125 150	125 150 175	125 175

二十八樓  
28th Floor



- = 大廈公契界定為公共地方以供吊船維修管道的空間  
Common Areas Under Deed of Mutual Covenant For Pipe Works Maintenance Access By Gondola
- A/C PLATFORM = 冷氣機平台  
Air-conditioner Platform
- B. = 浴室  
Bathroom
- B.R. = 睡房  
Bedroom
- BAL. = 露台  
Balcony
- BAL. ABOVE = 上層為露台  
Balcony above
- C.D. = 電纜導管  
Cable Duct
- COVER OF BAL. = 露台上蓋  
Cover of Balcony
- COVER OF U.P. = 工作平台上蓋  
Cover of Utility Platform
- DIN. = 飯廳  
Dining Room
- E.M.C. = 電錶櫃  
Electric Meter Cabinet
- H.R. = 消防喉轆  
Hose Reel
- LIV. = 客廳  
Living Room
- OPEN KIT. = 開放式廚房  
Open Kitchen
- P.D. = 管道  
Pipe Duct
- R.S. & M.R. = 垃圾及物料回收房  
Refuse Storage & Material Recovery Room
- U.P. = 工作平台  
Utility Platform
- U.P. ABOVE = 上層為工作平台  
Utility Platform above
- W.M.C. = 水錶櫃  
Water Meter Cabinet



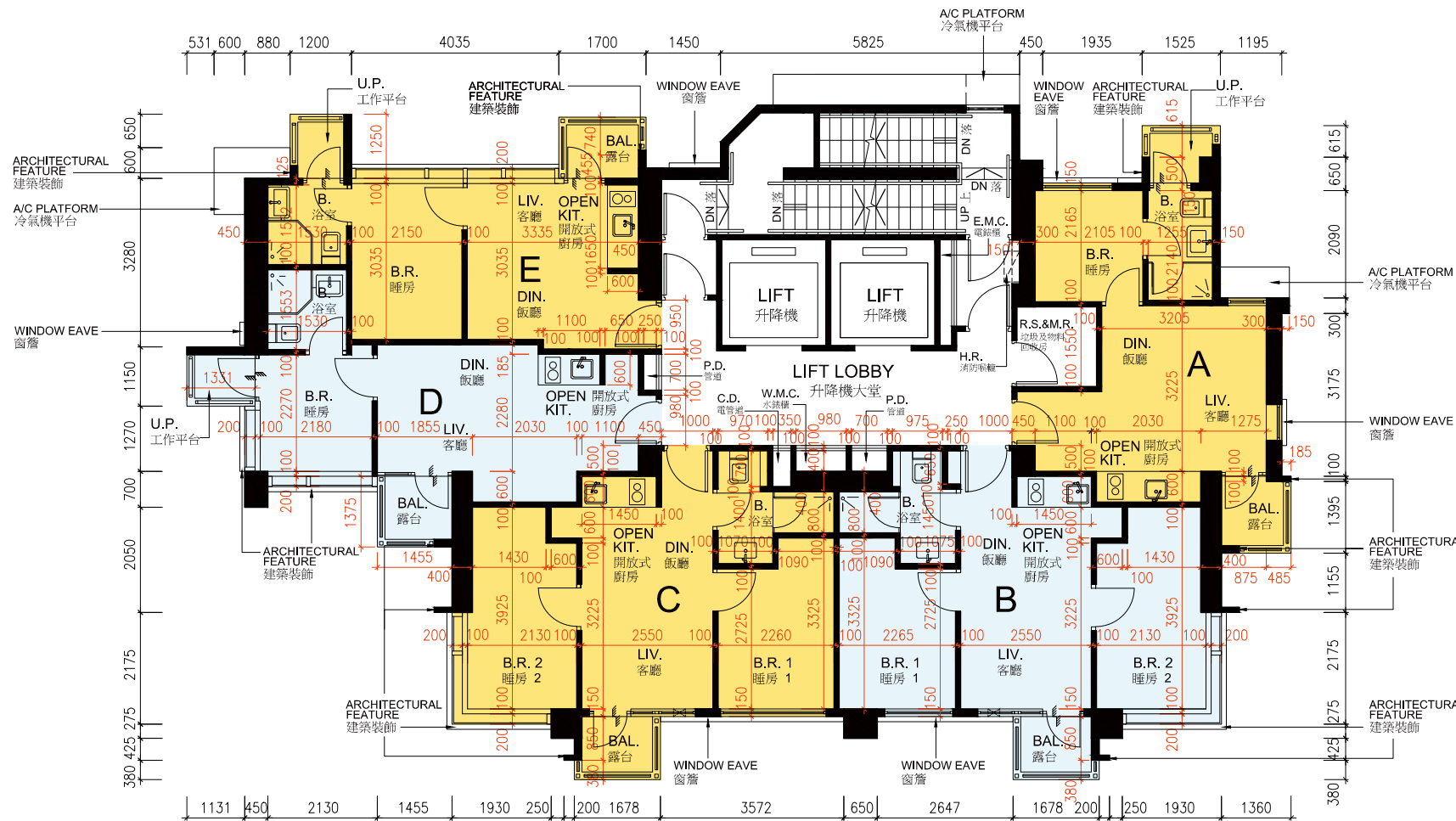
- 備註:
- 因住宅物業的較高樓層的結構牆的厚度遞減，較高層的內部面積，一般比較低層的內部面積稍大。
  - 平面圖所列之數字以毫米標示之建築結構呎吋，並以 2018 年 7 月 26 日經屋宇署批准的建築圖則為基礎。
  - 部分樓層外牆範圍設有建築裝飾。
  - 部分住宅單位的露台及 / 或平台及 / 或工作平台及 / 或冷氣機平台及 / 或外牆或附近設有外露之公用喉管。
  - 部分住宅單位客廳、飯廳、睡房、浴室及開放式廚房天花板有跌級樓板及 / 或假天花用以裝置冷氣系統及 / 或其他機電設備。
  - 露台及工作平台為不可封閉地方。
  - 樓面平面圖上所顯示的形象裝置符號，例如浴缸、洗滌盆、坐廁、洗滌盆櫃等乃摘自最新的經批准的建築圖則，只作一般性標誌。

- Notes:
- The internal areas of the residential properties on the upper floor will generally be slightly larger than those on the lower floors because of the reducing thickness of the structural walls on the upper floors.
  - The dimensions in floor plans are all structural dimensions in millimeter which were prepared on the basis of General Building Plan approved by the Buildings Department on 26 July 2018.
  - There may be architectural features on external walls of some of the floors.
  - Common pipes exposed are located at/adjacent to balcony and/or flat roof and/or utility platform and/or air-conditioning platform and/or external wall of some residential units.
  - There are sunken slabs and/or ceiling bulkheads at living rooms, dining rooms, bedrooms, bathrooms, and open kitchens of some residential units for the air-conditioning system and/or M&E service.
  - Balconies and utility platforms are non-enclosed areas.
  - Symbols of fittings shown on the floor plans, such as bathtubs, sink, water closets, sink counter, etc., are architectural symbols retrieved from the latest approved general building plans for general indication only.

每個住宅物業 Each Residential Property	樓層 Floor	單位 Flat				
		A	B	C	D	E
層與層之間的高度 (毫米) Floor-to-Floor Height (mm)	28 樓 28/F	3150	3150	3150	3150	3150
樓板 (不包括灰泥) 的厚度 (毫米) Thickness of Floor Slab (excluding plaster) (mm)		125 150	125 150	125 150	125 150 175	125 175



二十九樓  
29th Floor



- = 大廈公契界定為公共地方以供吊船維修管道的空間  
Common Areas Under Deed of Mutual Covenant For Pipe Works Maintenance Access By Gondola
- A/C PLATFORM = 冷氣機平台  
Air-conditioner Platform
- B. = 浴室  
Bathroom
- B.R. = 睡房  
Bedroom
- BAL. = 露台  
Balcony
- BAL. ABOVE = 上層為露台  
Balcony above
- C.D. = 電纜導管  
Cable Duct
- COVER OF BAL. = 露台上蓋  
Cover of Balcony
- COVER OF U.P. = 工作平台上蓋  
Cover of Utility Platform
- DIN. = 飯廳  
Dining Room
- E.M.C. = 電錶櫃  
Electric Meter Cabinet
- H.R. = 消防喉轆  
Hose Reel
- LIV. = 客廳  
Living Room
- OPEN KIT. = 開放式廚房  
Open Kitchen
- P.D. = 管道  
Pipe Duct
- R.S. & M.R. = 垃圾及物料回收房  
Refuse Storage & Material Recovery Room
- U.P. = 工作平台  
Utility Platform
- U.P. ABOVE = 上層為工作平台  
Utility Platform above
- W.M.C. = 水錶櫃  
Water Meter Cabinet



備註:

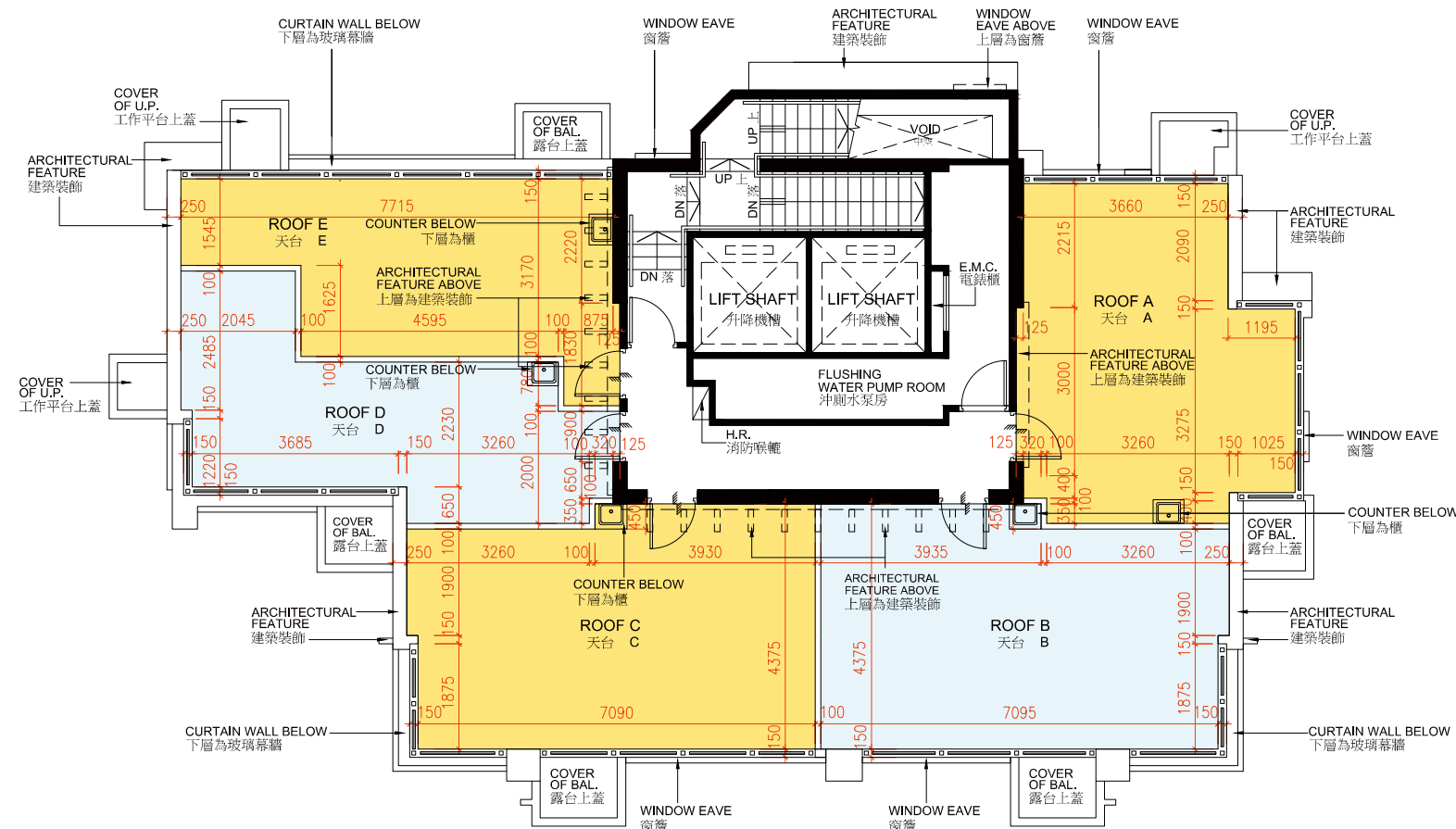
1. 因住宅物業的較高樓層的結構牆的厚度遞減，較高層的內部面積，一般比較低層的內部面積稍大。
2. 平面圖所列之數字以毫米標示之建築結構呎吋，並以 2018 年 7 月 26 日經屋宇署批准的建築圖則為基礎。
3. 部分樓層外牆範圍設有建築裝飾。
4. 部分住宅單位的露台及 / 或平台及 / 或工作平台及 / 或冷氣機平台及 / 或外牆或附近設有外露之公用喉管。
5. 部分住宅單位客廳、飯廳、睡房、浴室及開放式廚房天花板有跌級樓板及 / 或假天花用以裝置冷氣系統及 / 或其他機電設備。
6. 露台及工作平台為不可封閉地方。
7. 樓面平面圖上所顯示的形象裝置符號，例如浴缸、洗滌盆、坐廁、洗滌盆櫃等乃摘自最新的經批准的建築圖則，只作一般性標誌。

Notes:

1. The internal areas of the residential properties on the upper floor will generally be slightly larger than those on the lower floors because of the reducing thickness of the structural walls on the upper floors.
2. The dimensions in floor plans are all structural dimensions in millimeter which were prepared on the basis of General Building Plan approved by the Buildings Department on 26 July 2018.
3. There may be architectural features on external walls of some of the floors.
4. Common pipes exposed are located at/adjacent to balcony and/or flat roof and/or utility platform and/or air-conditioning platform and/or external wall of some residential units.
5. There are sunken slabs and/or ceiling bulkheads at living rooms, dining rooms, bedrooms, bathrooms, and open kitchens of some residential units for the air-conditioning system and/or M&E service.
6. Balconies and utility platforms are non-enclosed areas.
7. Symbols of fittings shown on the floor plans, such as bathtubs, sink, water closets, sink counter, etc., are architectural symbols retrieved from the latest approved general building plans for general indication only.

每個住宅物業 Each Residential Property	樓層 Floor	單位 Flat				
		A	B	C	D	E
層與層之間的高度 (毫米) Floor-to-Floor Height (mm)	29 樓 29/F	3775	3850	3850	3850	3850
		3600	3600	3600	3600	3500
		3500	3500	3500	3500	3500
樓板 (不包括灰泥) 的厚度 (毫米) Thickness of Floor Slab (excluding plaster) (mm)	29 樓 29/F	125	125	125	125	125
		150	150	150	150	175

天台  
Roof



- = 大廈公契界定為公共地方以供吊船維修管道的空間  
Common Areas Under Deed of Mutual Covenant For Pipe Works Maintenance Access By Gondola
- A/C PLATFORM = 冷氣機平台  
Air-conditioner Platform
- B. = 浴室  
Bathroom
- B.R. = 睡房  
Bedroom
- BAL. = 露台  
Balcony
- BAL. ABOVE = 上層為露台  
Balcony above
- C.D. = 電纜導管  
Cable Duct
- COVER OF BAL. = 露台上蓋  
Cover of Balcony
- COVER OF U.P. = 工作平台上蓋  
Cover of Utility Platform
- DIN. = 飯廳  
Dining Room
- E.M.C. = 電錶櫃  
Electric Meter Cabinet
- H.R. = 消防喉轆  
Hose Reel
- LIV. = 客廳  
Living Room
- OPEN KIT. = 開放式廚房  
Open Kitchen
- P.D. = 管道  
Pipe Duct
- R.S. & M.R. = 垃圾及物料回收房  
Refuse Storage & Material Recovery Room
- U.P. = 工作平台  
Utility Platform
- U.P. ABOVE = 上層為工作平台  
Utility Platform above
- W.M.C. = 水錶櫃  
Water Meter Cabinet

比例尺 SCALE: 0m (米) 5m (米)

備註:

1. 因住宅物業的較高樓層的結構牆的厚度遞減，較高層的內部面積，一般比較低層的內部面積稍大。
2. 平面圖所列之數字以毫米標示之建築結構呎吋，並以 2018 年 7 月 26 日經屋宇署批准的建築圖則為基礎。
3. 部分樓層外牆範圍設有建築裝飾。
4. 部分住宅單位的露台及 / 或平台及 / 或工作平台及 / 或冷氣機平台及 / 或外牆或附近設有外露之公用喉管。
5. 部分住宅單位客廳、飯廳、睡房、浴室及開放式廚房天花有跌級樓板及 / 或假天花用以裝置冷氣系統及 / 或其他機電設備。
6. 露台及工作平台為不可封閉地方。
7. 樓面平面圖上所顯示的形象裝置符號，例如浴缸、洗滌盆、坐廁、洗滌盆櫃等乃摘自最新的經批准的建築圖則，只作一般性標誌。

Notes:

1. The internal areas of the residential properties on the upper floor will generally be slightly larger than those on the lower floors because of the reducing thickness of the structural walls on the upper floors.
2. The dimensions in floor plans are all structural dimensions in millimeter which were prepared on the basis of General Building Plan approved by the Buildings Department on 26 July 2018.
3. There may be architectural features on external walls of some of the floors.
4. Common pipes exposed are located at/adjacent to balcony and/or flat roof and/or utility platform and/or air-conditioning platform and/or external wall of some residential units.
5. There are sunken slabs and/or ceiling bulkheads at living rooms, dining rooms, bedrooms, bathrooms, and open kitchens of some residential units for the air-conditioning system and/or M&E service.
6. Balconies and utility platforms are non-enclosed areas.
7. Symbols of fittings shown on the floor plans, such as bathtubs, sink, water closets, sink counter, etc., are architectural symbols retrieved from the latest approved general building plans for general indication only.

每個住宅物業 Each Residential Property	樓層 Floor	單位 Flat				
		A	B	C	D	E
層與層之間的高度 (毫米) Floor-to-Floor Height (mm)	天台 Roof	不適用 Not Applicable	不適用 Not Applicable	不適用 Not Applicable	不適用 Not Applicable	不適用 Not Applicable
樓板 (不包括灰泥) 的厚度 (毫米) Thickness of Floor Slab (excluding plaster) (mm)		不適用 Not Applicable	不適用 Not Applicable	不適用 Not Applicable	不適用 Not Applicable	不適用 Not Applicable