

FLOOR PLANS OF RESIDENTIAL PROPERTIES IN THE DEVELOPMENT

發展項目的住宅物業的樓面平面圖

P.20 7/F FLOOR PLAN
7樓樓面平面圖

P.22 8/F-38/F FLOOR PLAN
8樓至38樓樓面平面圖

P.24 39/F-55/F and 57/F FLOOR
PLAN
39樓至55樓及57樓樓面平面圖

P.26 56/F FLOOR PLAN
56樓樓面平面圖

P.28 58/F FLOOR PLAN
58樓樓面平面圖

P.30 59/F FLOOR PLAN
59樓樓面平面圖

P.32 60/F FLOOR PLAN
60樓樓面平面圖

P.34 ROOF FLOOR PLAN
天台樓面平面圖



FLOOR PLANS OF RESIDENTIAL PROPERTIES IN THE DEVELOPMENT

發展項目的住宅物業的樓面平面圖

7/F FLOOR PLAN

7樓樓面平面圖

The thickness of the floor slabs (excluding plaster) of each residential property on 7/F: 150mm, 175mm and 225mm.
The floor-to-floor height of each residential property on 7/F: 3.15m.
The internal areas of the residential properties on the upper floors will generally be slightly larger than those on the lower floors because of the reducing thickness of the structural walls on the upper floors.

* The description of “Flat Roofs” as shown on the Floor Plan(s) of Flats A, B, C, D and E of 7/F of the Development corresponds to the description in the latest Approved Building Plans of the Development but each of such Flat Roofs (with cover above) is de facto a Balcony in actual use. In this connection, covered areas of each of such Flat Roofs has been respectively counted as part of “saleable area” of each of such Flats in compliance with section 8 of the Residential Properties (First-hand Sales) Ordinance (Cap.621) and section 11(2)(b) in Part 1 of Schedule 1 thereto.

Remarks: The dimensions in floor plans are all structural dimensions in millimetre.

7樓住宅物業的樓板（不包括灰泥）的厚度：150毫米、175毫米及225毫米。
7樓住宅物業的層與層之間的高度：3.15米。

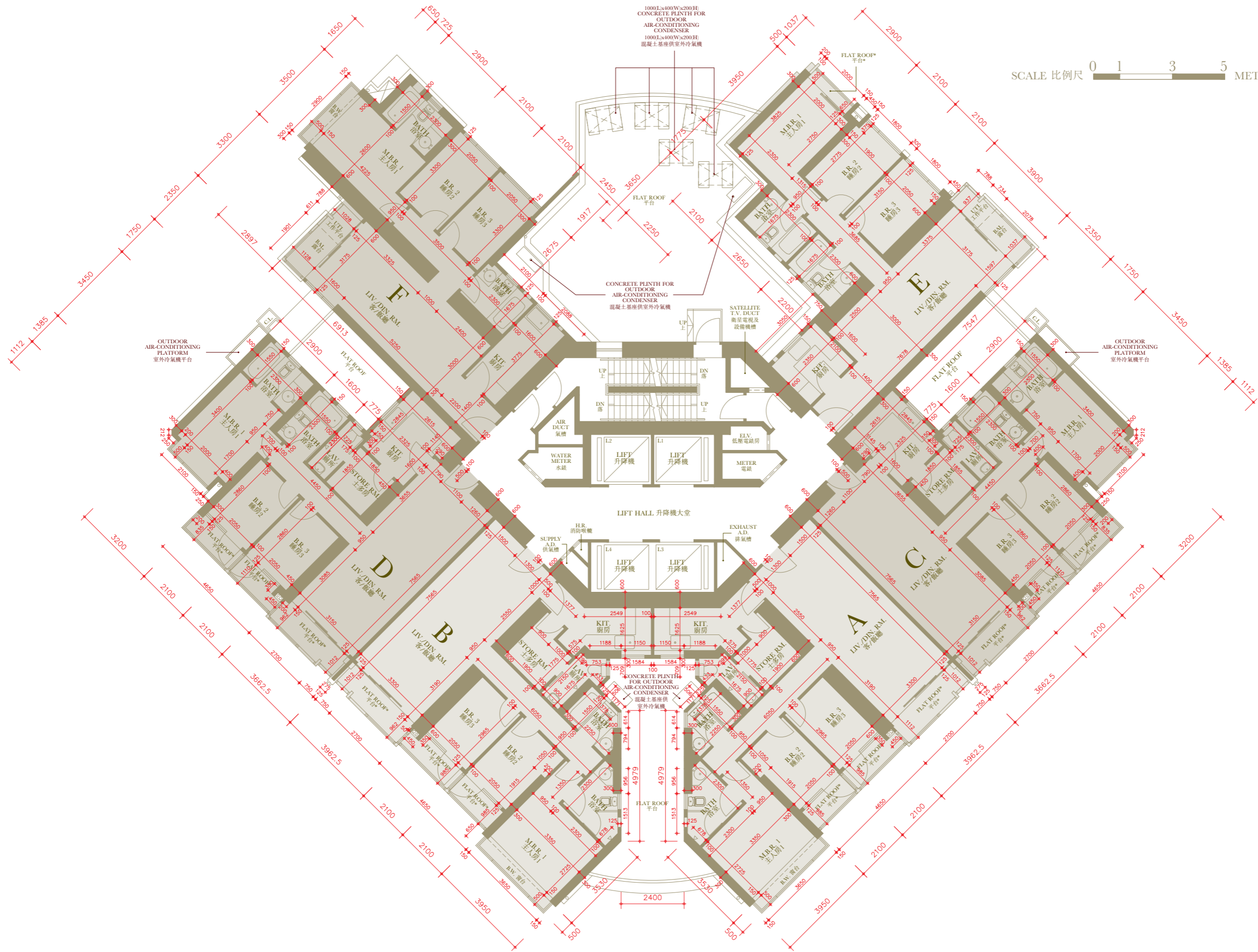
因住宅物業的較高樓層的結構牆的厚度遞減，較高樓層的內部面積，一般比較低樓層的內部面積稍大。

* 發展項目7樓A、B、C、D及E室平面圖上顯示為「平台」之描述，跟發展項目最新版本之批准的建築圖則上所描述的一致，惟每一個這樣的平台（其上有蓋頂）實質上的真正用途為露台。因此，在符合《一手住宅物業銷售條例》（第621章）第8條及該條例附表1第1部第11(2)(b)條下，每一個平台之有蓋面積已分別地被計入為該室的「實用面積」之部份。

備註：平面圖所列之數字為以毫米標示之建築結構呎吋。

Abbreviation 縮寫

BAL. BALCONY 露台	EXHAUST A.D. EXHAUST AIR DUCT 排氣槽	LAV. LAVATORY 廁所
BATH BATHROOM 浴室	H.R. HOSE REEL 消防喉轆	LIV./DIN. RM. LIVING/DINING ROOM 客/飯廳
B.R. 2 BEDROOM 2 睡房2	KIT. KITCHEN 廚房	M.B.R. 1 MASTER BEDROOM 1 主人房1
B.R. 3 BEDROOM 3 睡房3	L1 LIFT 1 升降機1	SATELLITE T.V. DUCT SATELLITE TELEVISION DUCT 衛星電視及設備機槽
B.W. BAY WINDOW 窗台	L2 LIFT 2 升降機2	STORE RM. STORE ROOM 士多房
C.L. CAT LADDER 爬梯	L3 LIFT 3 升降機3	SUPPLY A.D. SUPPLY AIR DUCT 供氣槽
DN DOWN 落	L4 LIFT 4 升降機4	UTI. UTILITY PLATFORM 工作平台
ELV. ELECTRICAL LOW VOLTAGE ROOM 低壓電錶房		



SCALE 比例尺 0 1 3 5 METRES (米)



FLOOR PLANS OF RESIDENTIAL PROPERTIES IN THE DEVELOPMENT

發展項目的住宅物業的樓面平面圖

8/F-38/F FLOOR PLAN (8/F-12/F, 15/F, 17/F-23/F, 25/F-33/F, 35/F-36/F and 38/F)

8樓至38樓樓面平面圖 (8樓至12樓、15樓、17樓至23樓、25樓至33樓、35樓至36樓及38樓)

The thickness of the floor slabs (excluding plaster) of each residential property on 8/F to 12/F, 15/F, 17/F to 23/F, 25/F to 33/F, 35/F to 36/F and 38/F: 125mm, 150mm, 200mm, 210mm and 230mm.

The floor-to-floor height of each residential property on 8/F to 12/F, 15/F, 17/F to 23/F, 25/F to 33/F, 35/F to 36/F and 38/F: 2.8m.

The internal areas of the residential properties on the upper floors will generally be slightly larger than those on the lower floors because of the reducing thickness of the structural walls on the upper floors.

8樓至12樓、15樓、17樓至23樓、25樓至33樓、35樓至36樓及38樓住宅物業的樓板(不包括灰泥)的厚度:125毫米、150毫米、200毫米、210毫米及230毫米。

8樓至12樓、15樓、17樓至23樓、25樓至33樓、35樓至36樓及38樓住宅物業的層與層之間的高度:2.8米。

因住宅物業的較高樓層的結構牆的厚度遞減,較高樓層的內部面積,一般比較低樓層的內部面積稍大。

Remarks: The dimensions in floor plans are all structural dimensions in millimetre.

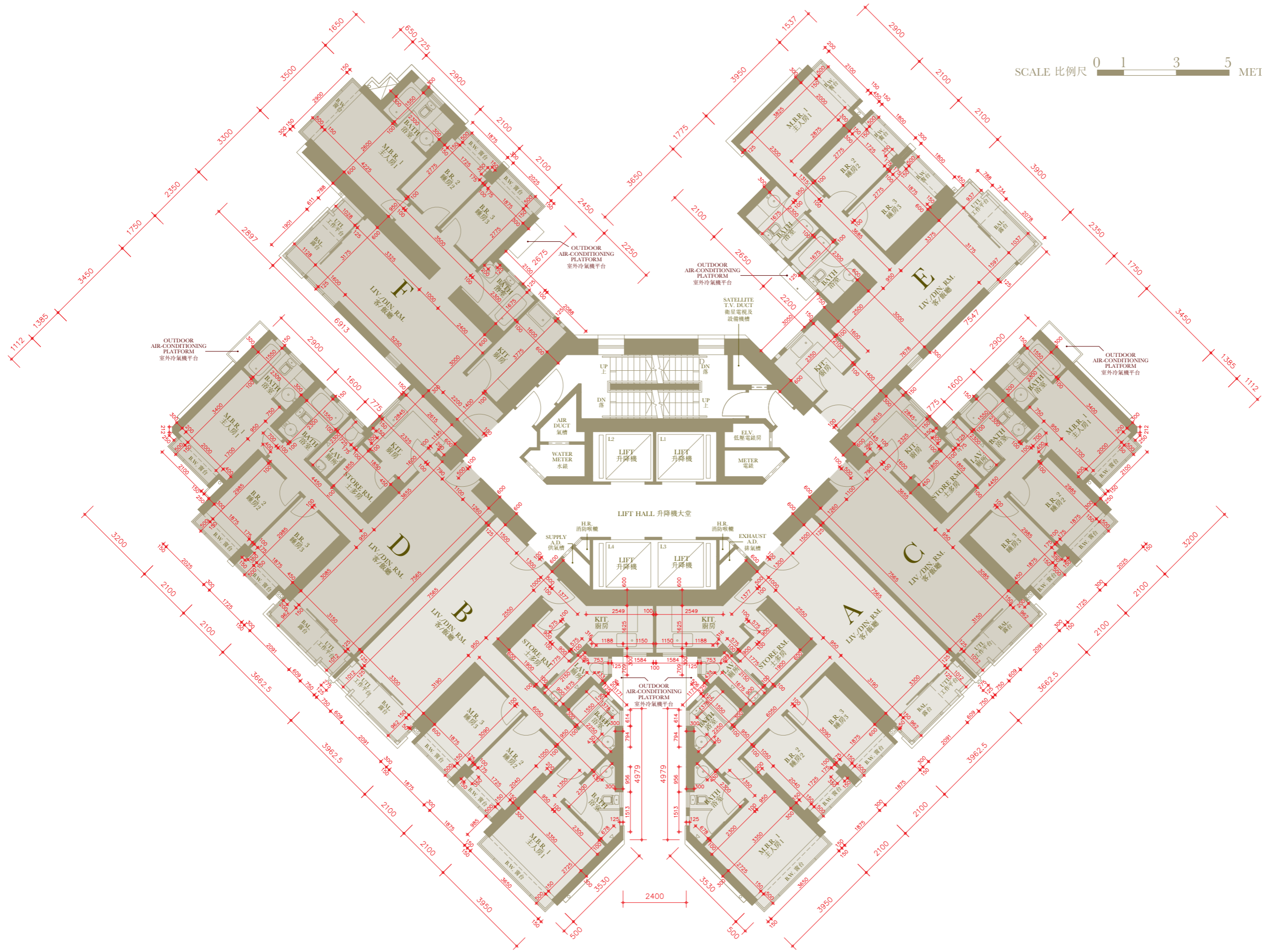
備註: 平面圖所列之數字為以毫米標示之建築結構呎吋。

Abbreviation 縮寫

BAL. BALCONY 露台	EXHAUST A.D. EXHAUST AIR DUCT 排氣槽	LAV. LAVATORY 廁所
BATH BATHROOM 浴室	H.R. HOSE REEL 消防喉轆	LIV./DIN. RM. LIVING/DINING ROOM 客/飯廳
B.R. 2 BEDROOM 2 睡房2	KIT. KITCHEN 廚房	M.B.R. 1 MASTER BEDROOM 1 主人房1
B.R. 3 BEDROOM 3 睡房3	L1 LIFT 1 升降機1	SATELLITE T.V. DUCT SATELLITE TELEVISION DUCT 衛星電視及設備機槽
B.W. BAY WINDOW 窗台	L2 LIFT 2 升降機2	STORE RM. STORE ROOM 士多房
DN DOWN 落	L3 LIFT 3 升降機3	SUPPLY A.D. SUPPLY AIR DUCT 供氣槽
ELV. ELECTRICAL LOW VOLTAGE ROOM 低壓電錶房	L4 LIFT 4 升降機4	UTI. UTILITY PLATFORM 工作平台



SCALE 比例尺 0 1 3 5 METRES (米)



FLOOR PLANS OF RESIDENTIAL PROPERTIES IN THE DEVELOPMENT

發展項目的住宅物業的樓面平面圖

39/F-55/F and 57/F FLOOR PLAN (39/F-43/F, 45/F-53/F, 55/F and 57/F)

39樓至55樓及57樓樓面平面圖 (39樓至43樓、45樓至53樓、55樓及57樓)

The thickness of the floor slabs (excluding plaster) of each residential property on 39/F to 43/F, 45/F to 53/F and 55/F: 125mm, 150mm, 200mm, 210mm and 230mm.

Floor-to-floor height of each residential property on 39/F to 43/F, 45/F to 53/F and 55/F: 2.8m.

The thickness of the floor slabs (excluding plaster) of each residential property on 57/F: 125mm, 150mm, 210mm and 230mm.

The floor-to-floor height of each residential property on 57/F: 3.15m.

The internal areas of the residential properties on the upper floors will generally be slightly larger than those on the lower floors because of the reducing thickness of the structural walls on the upper floors.

Alterations to Flat C and D on 39/F to 43/F, 45/F to 53/F, 55/F and 57/F have been made by way of minor works or exempted works under the Buildings Ordinance (Cap.123) after completion of the Development. The approximate locations of the alterations are indicated in the floor plan and the alterations are set out below (with the numbering below corresponding to the remarks in the floor plan):

(a) Original internal walls removed, replaced with walls of different dimensions and fitted with different fittings.

(b) Door relocated or removed, replaced by a door at a different location or a different design.

Please refer to the as-built plan on page 25.

Remarks: The dimensions in floor plans are all structural dimensions in millimetre.

39樓至43樓、45樓至53樓及55樓住宅物業的樓板(不包括灰泥)的厚度:125毫米、150毫米、200毫米、210毫米及230毫米。

39樓至43樓、45樓至53樓及55樓住宅物業的層與層之間的高度:2.8米。

57樓住宅物業的樓板(不包括灰泥)的厚度:125毫米、150毫米、210毫米及230毫米。

57樓住宅物業的層與層之間的高度:3.15米。

因住宅物業的較高樓層的結構牆的厚度遞減,較高樓層的內部面積,一般比較低樓層的內部面積稍大。

39樓至43樓、45樓至53樓、55樓及57樓C及D室在發展項目落成後因進行小型工程或獲《建築物條例》(第123章)豁免的工程而有所改動。該等改動之大概位置於樓面平面圖標示,及該等改動列出如下(下述編號對應樓面平面圖中的附註):

(a) 原本的內牆拆除,並以不同尺寸的牆及不同的裝置取代。

(b) 門移位或拆除,並以不同位置或不同設計的門取代。

請參考第25頁之實際建造平面圖。

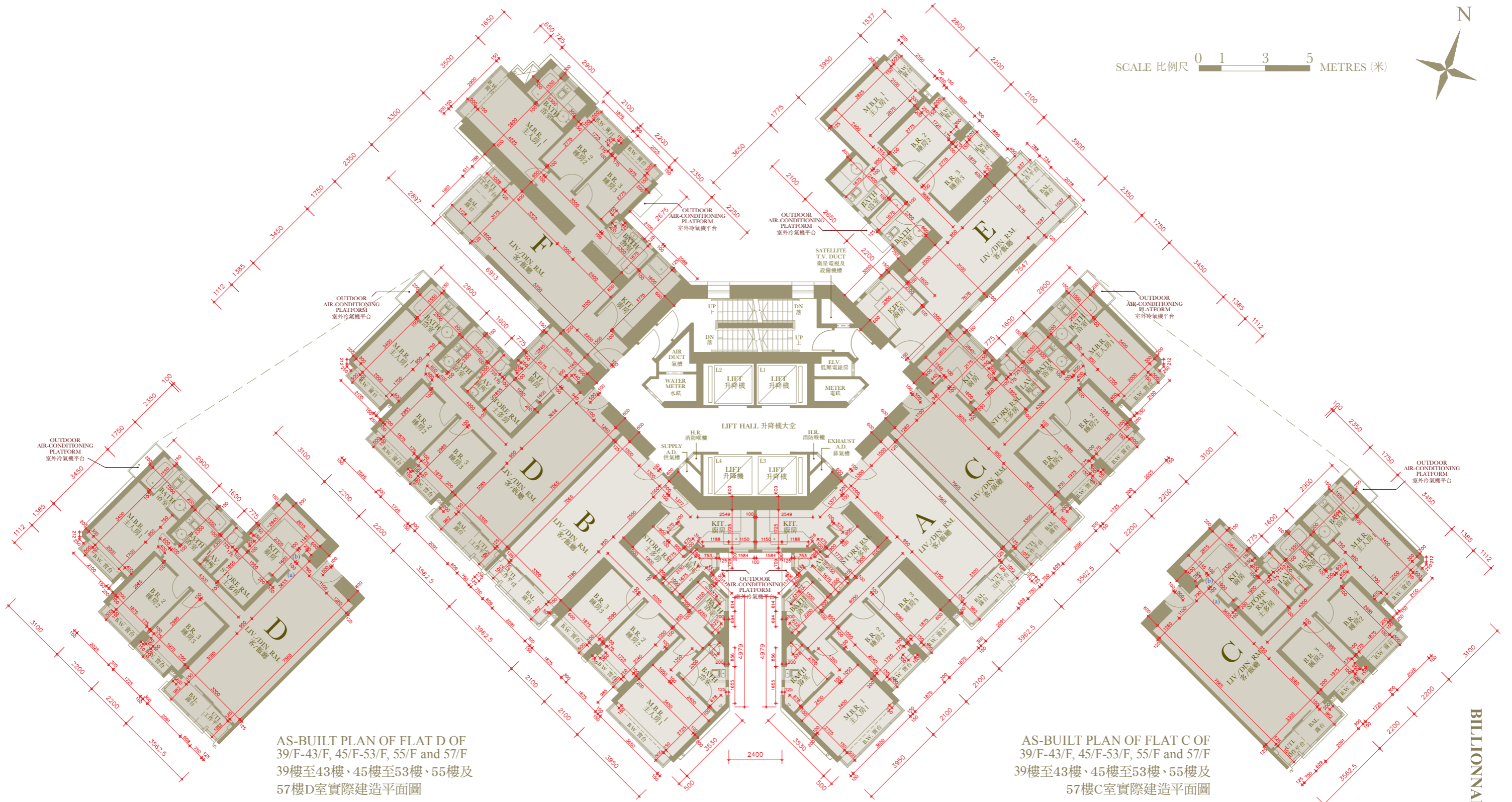
備註: 平面圖所列之數字為以毫米標示之建築結構呎吋。

Abbreviation 縮寫

BAL. BALCONY 露台	EXHAUST A.D. EXHAUST AIR DUCT 排氣槽	LAV. LAVATORY 廁所
BATH BATHROOM 浴室	H.R. HOSE REEL 消防喉轆	LIV./DIN. RM. LIVING/DINING ROOM 客/飯廳
B.R. 2 BEDROOM 2 睡房2	KIT. KITCHEN 廚房	M.B.R. 1 MASTER BEDROOM 1 主人房1
B.R. 3 BEDROOM 3 睡房3	L1 LIFT 1 升降機1	SATELLITE TV. DUCT SATELLITE TELEVISION DUCT 衛星電視及設備機槽
B.W. BAY WINDOW 窗台	L2 LIFT 2 升降機2	STORE RM. STORE ROOM 士多房
DN DOWN 落	L3 LIFT 3 升降機3	SUPPLY A.D. SUPPLY AIR DUCT 供氣槽
ELV. ELECTRICAL LOW VOLTAGE ROOM 低壓電錶房	L4 LIFT 4 升降機4	UTI. UTILITY PLATFORM 工作平台



SCALE 比例尺 0 1 3 5 METRES (米)



AS-BUILT PLAN OF FLAT D OF 39/F-43/F, 45/F-53/F, 55/F and 57/F
39樓至43樓、45樓至53樓、55樓及57樓D室實際建造平面圖

AS-BUILT PLAN OF FLAT C OF 39/F-43/F, 45/F-53/F, 55/F and 57/F
39樓至43樓、45樓至53樓、55樓及57樓C室實際建造平面圖

Remarks: This as-built plan shows the alteration works done to Flat C and D of 39/F to 43/F, 45/F to 53/F, 55/F and 57/F. Please refer to page 24 for details of the exempted works made to this flat.

備註：本39樓至43樓、45樓至53樓、55樓及57樓C及D室實際建造平面圖顯示其已改動工程。有關本室獲豁免的工程改動之詳情，請參考第24頁。

FLOOR PLANS OF RESIDENTIAL PROPERTIES IN THE DEVELOPMENT

發展項目的住宅物業的樓面平面圖

56/F FLOOR PLAN

56樓樓面平面圖

The thickness of the floor slabs (excluding plaster) of each residential property on 56/F: 125mm, 150mm, 200mm, 210mm and 230mm.

Floor-to-floor height of each residential property on 56/F: 2.8m.

The internal areas of the residential properties on the upper floors will generally be slightly larger than those on the lower floors because of the reducing thickness of the structural walls on the upper floors.

Alterations to Flat B, C and D on 56/F have been made by way of minor works or exempted works under the Buildings Ordinance (Cap.123) after completion of the Development. The approximate locations of the alterations are indicated in the floor plan and the alterations are set out below (with the numbering below corresponding to the remarks in the floor plan):

- (a) Original internal walls removed.
- (b) New internal wall.
- (c) Original internal walls removed, replaced with walls of different dimension and fitted with different fittings.
- (d) Original internal walls applied with timber furring.
- (e) Door relocated or removed, replaced by a door at a different location or different design.
- (f) Original internal walls applied with timber furring and metal sliding door is installed.

Please refer to the as-built plan on page 27.

Remarks: The dimensions in floor plans are all structural dimensions in millimetre.

56樓住宅物業的樓板(不包括灰泥)的厚度:125毫米、150毫米、200毫米、210毫米及230毫米。

56樓住宅物業的層與層之間的高度:2.8米。

因住宅物業的較高樓層的結構牆的厚度遞減,較高樓層的內部面積,一般比較低樓層的內部面積稍大。

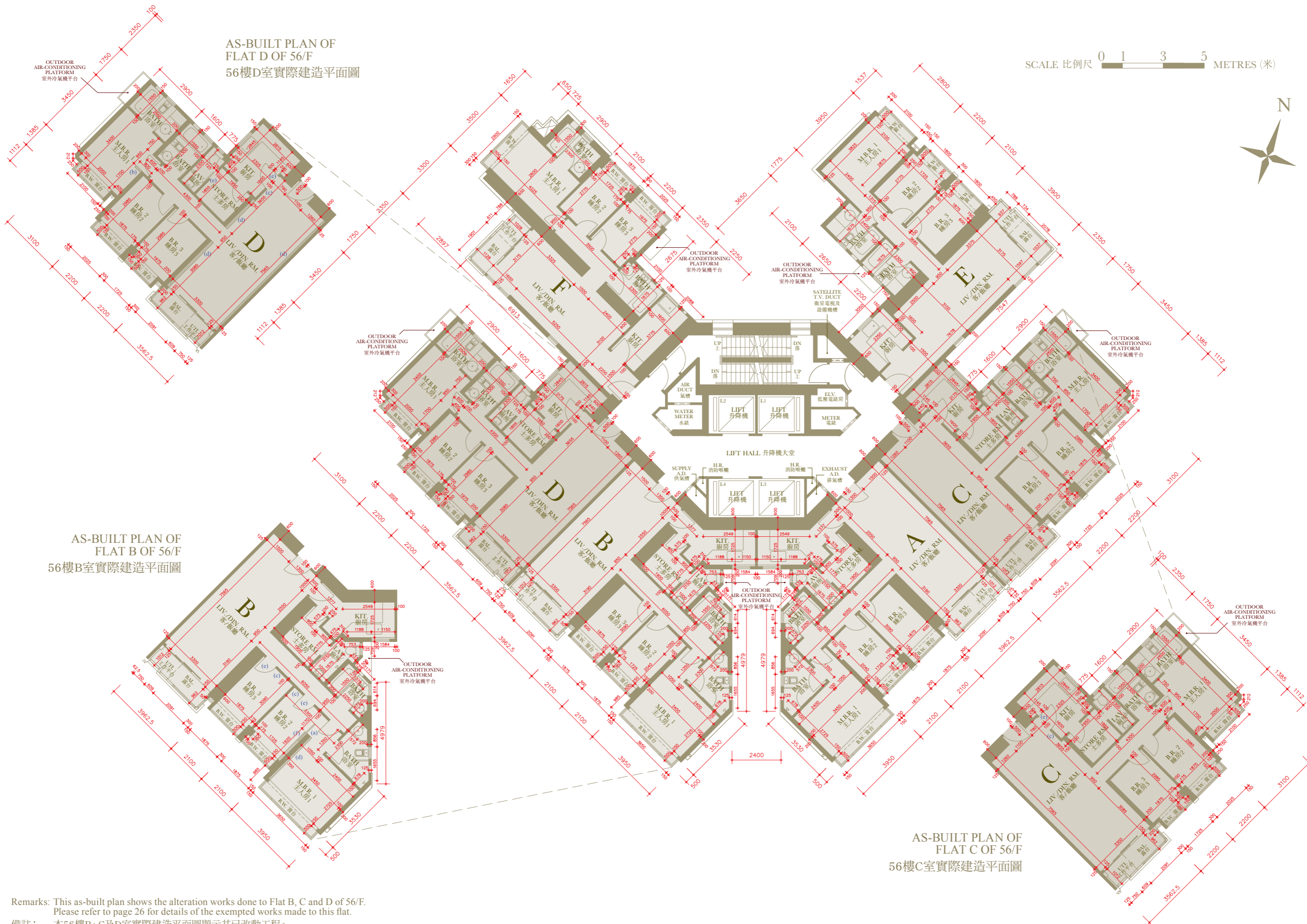
56樓B、C及D室在發展項目落成後因進行小型工程或獲《建築物條例》(第123章)豁免的工程而有所改動。該等改動之大概位置於樓面平面圖標示,及該等改動列出如下(下述編號對應樓面平面圖中的附註):

- (a) 原本的內牆拆除。
 - (b) 新建內牆。
 - (c) 原本的內牆拆除,並以不同尺寸的牆及不同的裝置取代。
 - (d) 原本的內牆加設木製圍身。
 - (e) 門移位或拆除,並以不同位置或不同設計之門取代。
 - (f) 原本的內牆加設木製圍身及安裝金屬滑動門。
- 請參考第27頁之實際建造平面圖。

備註: 平面圖所列之數字為以毫米標示之建築結構呎吋。

Abbreviation 縮寫

BAL. BALCONY 露台	EXHAUST A.D. EXHAUST AIR DUCT 排氣槽	LAV. LAVATORY 廁所
BATH BATHROOM 浴室	H.R. HOSE REEL 消防喉轆	LIV./DIN. RM. LIVING/DINING ROOM 客/飯廳
B.R. 2 BEDROOM 2 睡房2	KIT. KITCHEN 廚房	M.B.R. 1 MASTER BEDROOM 1 主人房1
B.R. 3 BEDROOM 3 睡房3	L1 LIFT 1 升降機1	SATELLITE T.V. DUCT SATELLITE TELEVISION DUCT 衛星電視及設備機槽
B.W. BAY WINDOW 窗台	L2 LIFT 2 升降機2	STORE RM. STORE ROOM 士多房
DN DOWN 落	L3 LIFT 3 升降機3	SUPPLY A.D. SUPPLY AIR DUCT 供氣槽
ELV. ELECTRICAL LOW VOLTAGE ROOM 低壓電錶房	L4 LIFT 4 升降機4	UTI. UTILITY PLATFORM 工作平台



AS-BUILT PLAN OF
FLAT D OF 56/F
56樓D室實際建造平面圖

SCALE 比例尺 0 1 3 5 METRES (米)

AS-BUILT PLAN OF
FLAT B OF 56/F
56樓B室實際建造平面圖

AS-BUILT PLAN OF
FLAT C OF 56/F
56樓C室實際建造平面圖

Remarks: This as-built plan shows the alteration works done to Flat B, C and D of 56/F. Please refer to page 26 for details of the exempted works made to this flat.
備註：本56樓B、C及D室實際建造平面圖顯示其已改動工程。有關本室獲豁免的工程改動之詳情，請參考第26頁。

FLOOR PLANS OF RESIDENTIAL PROPERTIES IN THE DEVELOPMENT

發展項目的住宅物業的樓面平面圖

58/F FLOOR PLAN

58樓樓面平面圖

The thickness of the floor slabs (excluding plaster) of each residential property on 58/F: 125mm, 150mm, 175mm, 200mm, 210mm and 230mm.

The floor-to-floor height of each residential property on 58/F: 3.15m.

The internal areas of the residential properties on the upper floors will generally be slightly larger than those on the lower floors because of the reducing thickness of the structural walls on the upper floors.

Alterations to Flat A, Flat B, Lower Duplex C and Lower Duplex D on 58/F have been made by way of minor works or exempted works under the Buildings Ordinance (Cap.123) after completion of the Development. The approximate locations of the alterations are indicated in the floor plan and the alterations are set out below (with the numbering below corresponding to the remarks in the floor plan):

- (a) Original internal walls removed.
- (b) New internal wall.
- (c) Original internal walls removed, replaced with walls of different dimension and fitted with different fittings.
- (d) Original internal walls applied with timber furring.
- (e) Door relocated or removed, replaced by a door at a different location or different design.
- (f) New door.
- (g) Windows replaced by different design.

Please refer to the as-built plan on page 29.

* The description of "Flat Roofs" as shown on the Floor Plan(s) of Duplex C of 58/F to 59/F of the Development corresponds to the description in the latest Approved Building Plans of the Development but each of such Flat Roofs (with cover above, either wholly or partially) is de facto a Balcony in actual use. In this connection, covered areas of each of such Flat Roofs has been respectively counted as part of "saleable area" of such Duplex in compliance with section 8 of the Residential Properties (First-hand Sales) Ordinance (Cap.621) and section 11(2)(b) in Part 1 of Schedule 1 thereto.

** The description of "Flat Roofs" as shown on the Floor Plan(s) of Duplex D of 58/F to 59/F of the Development corresponds to the description in the latest Approved Building Plans of the Development but each of such Flat Roofs (with cover above) is de facto a Balcony in actual use. In this connection, covered areas of each of such Flat Roofs has been respectively counted as part of "saleable area" of each of such Duplex in compliance with section 8 of the Residential Properties (First-hand Sales) Ordinance (Cap.621) and section 11(2)(b) in Part 1 of Schedule 1 thereto.

Remarks: The dimensions in floor plans are all structural dimensions in millimetre.

58樓住宅物業的樓板(不包括灰泥)的厚度:125毫米、150毫米、175毫米、200毫米、210毫米及230毫米。

58樓住宅物業的層與層之間的高度:3.15米。

因住宅物業的較高樓層的結構牆的厚度遞減,較高樓層的內部面積,一般比較低樓層的內部面積稍大。

58樓A室、B室、下層複式單位C及下層複式單位D在發展項目落成後因進行小型工程或獲《建築物條例》(第123章)豁免的工程而有所改動。該等改動之大概位置於樓面平面圖標示,及該等改動列出如下(下述編號對應樓面平面圖中的附註):

- (a) 原本的內牆拆除。
- (b) 新建內牆。
- (c) 原本的內牆拆除,並以不同尺寸的牆及不同的裝置取代。
- (d) 原本的內牆加設木製圍身。
- (e) 門移位或拆除,並以不同位置或不同設計之門取代。
- (f) 新建門。
- (g) 窗戶以不同的設計代替。

請參考第29頁之實際建造平面圖。

* 發展項目58至59樓複式單位C平面圖上顯示為「平台」之描述,跟發展項目最新版本之批准的建築圖則上所描述的一致,惟每一個這樣的平台(整個或部分其上有蓋頂)實質上的真正用途為露台。因此,在符合《一手住宅物業銷售條例》(第621章)第8條及該條例附表1第1部第11(2)(b)條下,每一個這樣的平台之有蓋面積已分別地被計入為該複式單位的「實用面積」之部份。

** 發展項目58至59樓複式單位D平面圖上顯示為「平台」之描述,跟發展項目最新版本之批准的建築圖則上所描述的一致,惟每一個這樣的平台(其上有蓋頂)實質上的真正用途為露台。因此,在符合《一手住宅物業銷售條例》(第621章)第8條及該條例附表1第1部第11(2)(b)條下,每一個這樣的平台之有蓋面積已分別地被計入為該複式單位的「實用面積」之部份。

備註:平面圖所列之數字為以毫米標示之建築結構呎吋。

Abbreviation 縮寫

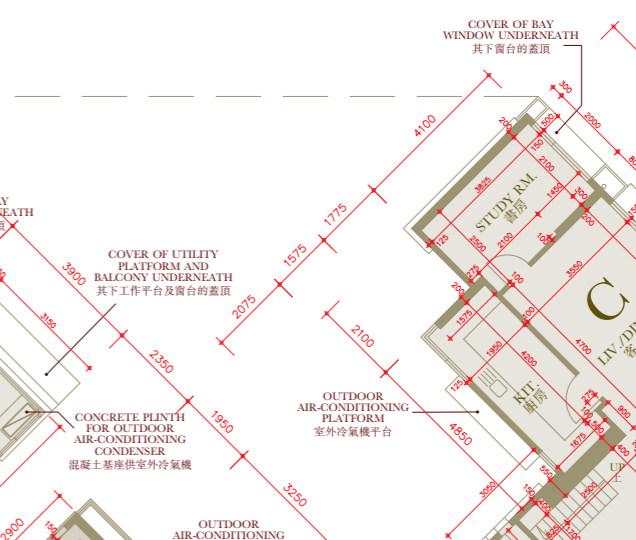
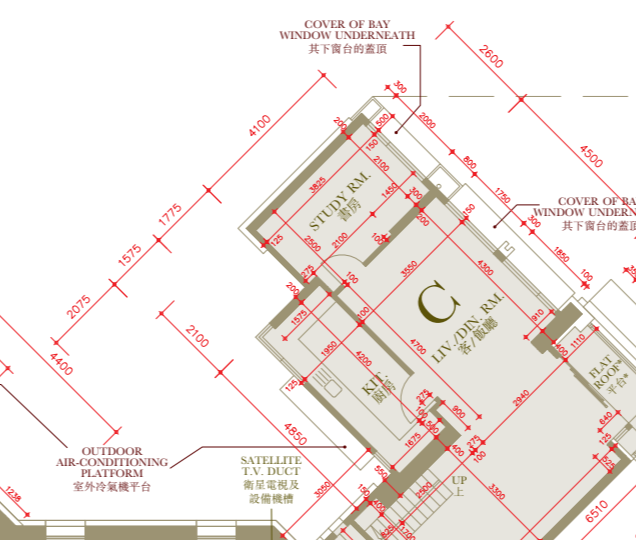
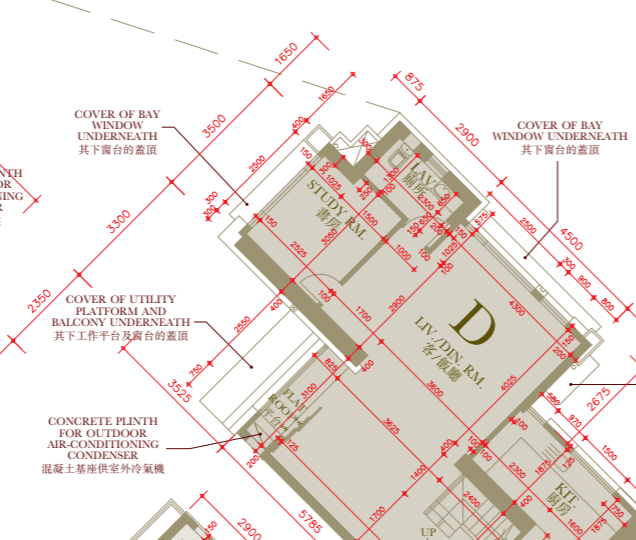
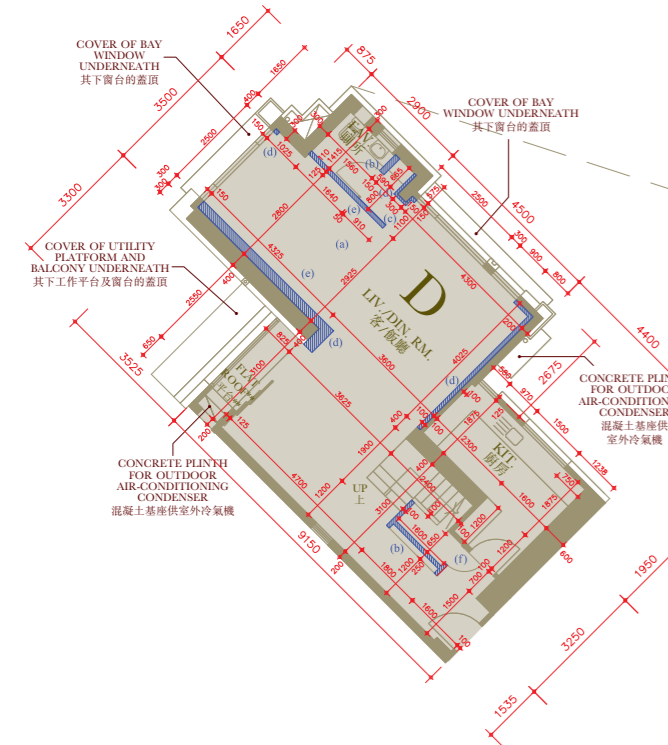
BATH 1 BATHROOM 1 浴室1	ELV. ELECTRICAL LOW VOLTAGE ROOM 低壓電錶房	LAV. LAVATORY 廁所
BATH 2 BATHROOM 2 浴室2	EXHAUST A.D. EXHAUST AIR DUCT 排氣槽	LIV./DIN. RM. LIVING/DINING ROOM 客/飯廳
BATH 3 BATHROOM 3 浴室3	H.R. HOSE REEL 消防喉轆	M.B.R. MASTER BEDROOM 主人房
B.R. 1 BEDROOM 1 睡房1	KIT. KITCHEN 廚房	SATELLITE T.V. DUCT SATELLITE TELEVISION DUCT 衛星電視及設備機槽
B.R. 2 BEDROOM 2 睡房2	L1 LIFT 1 升降機1	STORE STORE ROOM 士多房
B.R. 3 BEDROOM 3 睡房3	L2 LIFT 2 升降機2	STUDY RM. STUDY ROOM 書房
B.W. BAY WINDOW 窗台	L3 LIFT 3 升降機3	SUPPLY A.D. SUPPLY AIR DUCT 供氣槽
DN DOWN 落	L4 LIFT 4 升降機4	



SCALE 比例尺 0 1 3 5 METRES (米)

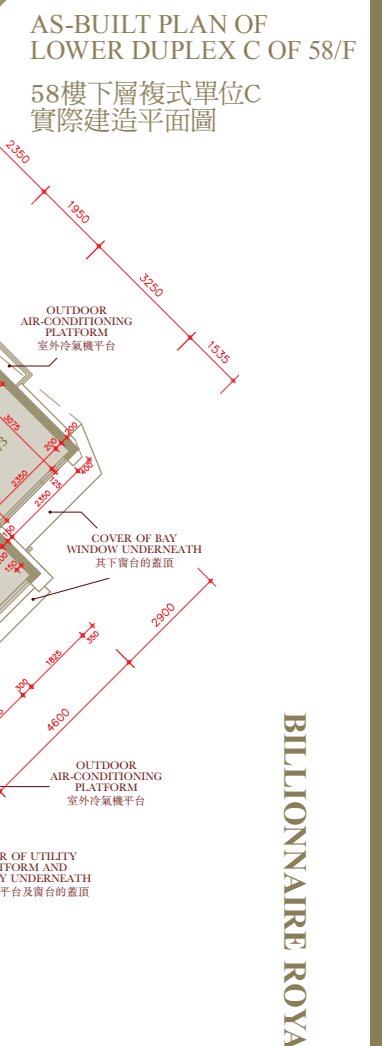
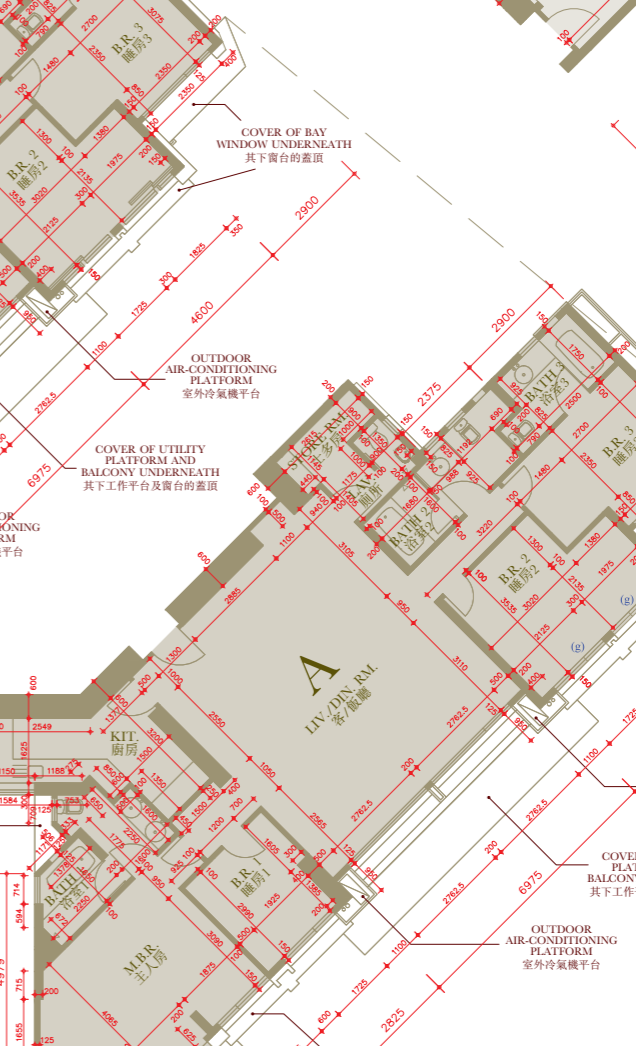
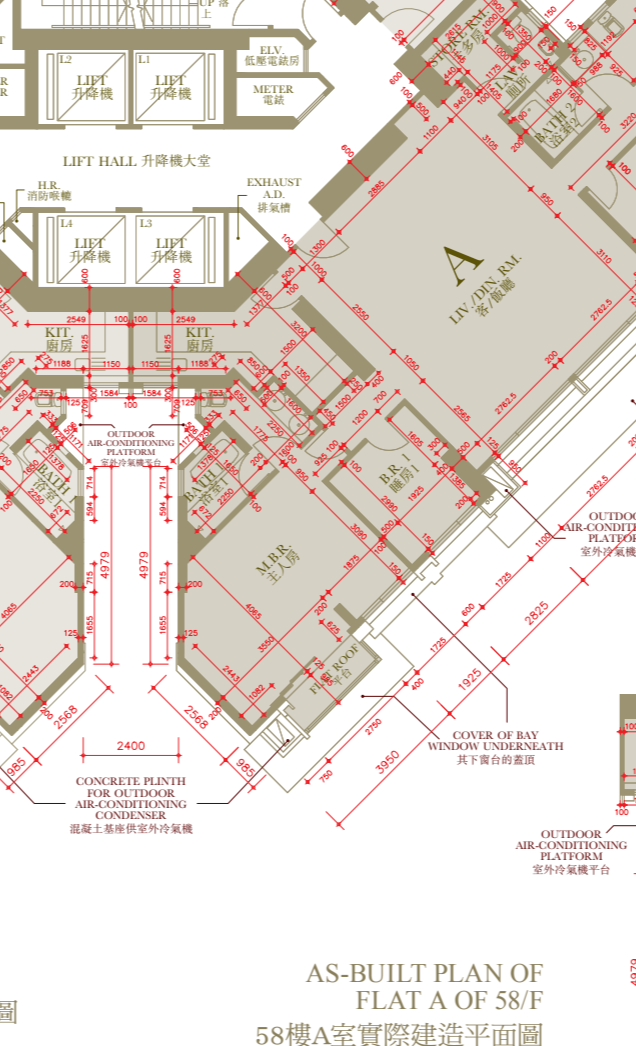
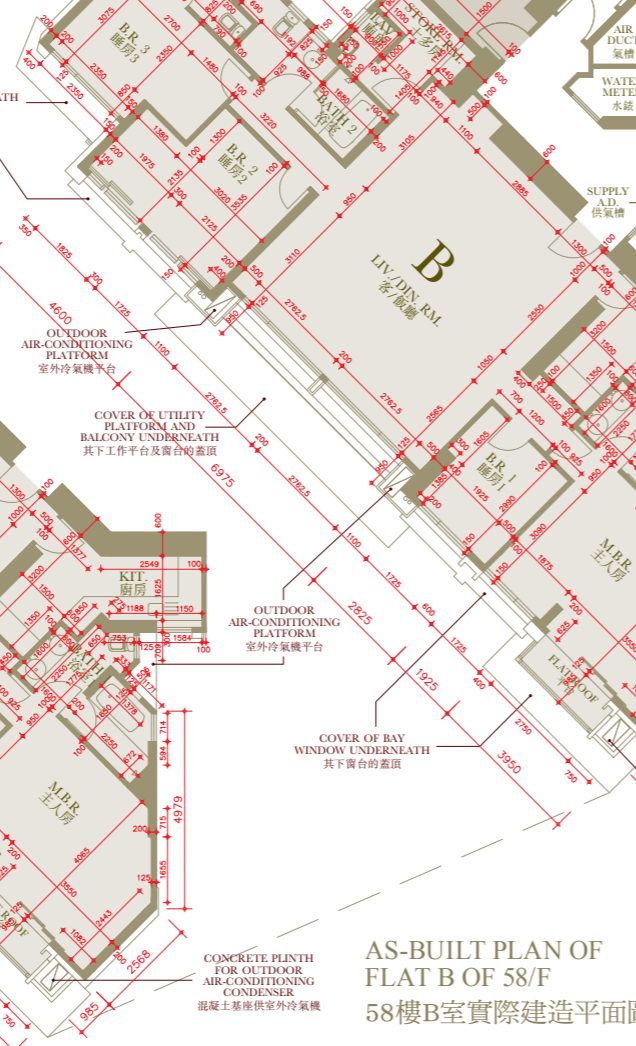
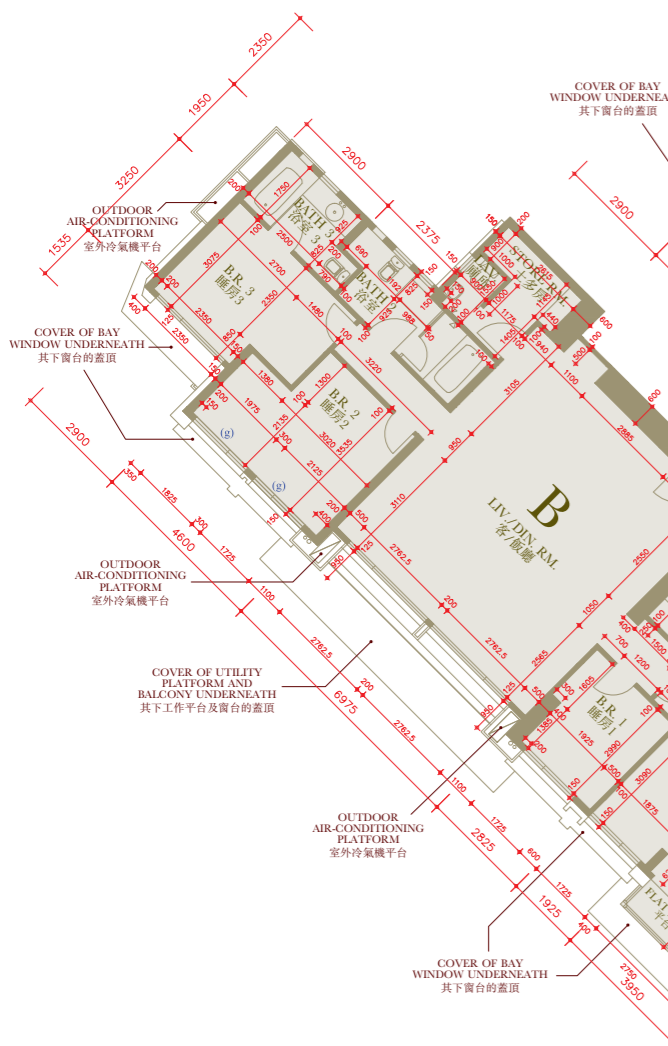
AS-BUILT PLAN OF LOWER DUPLEX D OF 58/F

58樓下層複式單位D
實際建造平面圖



AS-BUILT PLAN OF LOWER DUPLEX C OF 58/F

58樓下層複式單位C
實際建造平面圖



AS-BUILT PLAN OF FLAT B OF 58/F

58樓B室實際建造平面圖

AS-BUILT PLAN OF FLAT A OF 58/F

58樓A室實際建造平面圖

Remarks: This as-built plan shows the alteration works done to Flat A, Flat B, Lower Duplex C and Lower Duplex D of 58/F. Please refer to page 28 for details of the exempted works made to this unit.

備註：本58樓A、B室、下層複式單位C及下層複式單位D實際建造平面圖顯示其已改動工程。有關本單位獲豁免的工程改動之詳情，請參考第28頁。

FLOOR PLANS OF RESIDENTIAL PROPERTIES IN THE DEVELOPMENT

發展項目的住宅物業的樓面平面圖

59/F FLOOR PLAN

59樓樓面平面圖

The thickness of the floor slabs (excluding plaster) of each residential property on 59/F: 125mm, 150mm, 175mm, 200mm and 230mm.

Floor-to-floor height of each residential property on 59/F: 3.15m.

The internal areas of the residential properties on the upper floors will generally be slightly larger than those on the lower floors because of the reducing thickness of the structural walls on the upper floors.

Alterations to Lower Duplex A, Lower Duplex B, Upper Duplex C and Upper Duplex D on 59/F have been made by way of minor works or exempted works under the Buildings Ordinance (Cap.123) after completion of the Development. The approximate locations of the alterations are indicated in the floor plan and the alterations are set out below (with the numbering below corresponding to the remarks in the floor plan):

- (a) Original internal walls removed.
- (b) New internal wall.
- (c) Original internal walls removed, replaced with walls of different dimension and fitted with different fittings.
- (d) Original internal walls applied with timber furring.
- (e) Door relocated or removed, replaced by a door at a different location or different design.
- (f) Shower head relocated

Please refer to the as-built plan on page 31.

* The description of "Flat Roofs" as shown on the Floor Plan(s) of Duplex C of 58/F to 59/F of the Development corresponds to the description in the latest Approved Building Plans of the Development but each of such Flat Roofs (with cover above, either wholly or partially) is de facto a Balcony in actual use. In this connection, covered areas of each of such Flat Roofs has been respectively counted as part of "saleable area" of such Duplex in compliance with section 8 of the Residential Properties (First-hand Sales) Ordinance (Cap.621) and section 11(2)(b) in Part 1 of Schedule 1 thereto.

** The description of "Flat Roofs" as shown on the Floor Plan(s) of Duplex D of 58/F to 59/F of the Development corresponds to the description in the latest Approved Building Plans of the Development but each of such Flat Roofs (with cover above) is de facto a Balcony in actual use. In this connection, covered areas of each of such Flat Roofs has been respectively counted as part of "saleable area" of each of such Duplex in compliance with section 8 of the Residential Properties (First-hand Sales) Ordinance (Cap.621) and section 11(2)(b) in Part 1 of Schedule 1 thereto.

Remarks: The dimensions in floor plans are all structural dimensions in millimetre.

59樓住宅物業的樓板(不包括灰泥)的厚度:125毫米、150毫米、175毫米、200毫米及230毫米。

59樓住宅物業的層與層之間的高度:3.15米。

因住宅物業的較高樓層的結構牆的厚度遞減,較高樓層的內部面積,一般比較低樓層的內部面積稍大。

59樓下層複式單位A、下層複式單位B、上層複式單位C及上層複式單位D在發展項目落成後因進行小型工程或獲《建築物條例》(第123章)豁免的工程而有所改動。該等改動之大概位置於樓面平面圖標示,及該等改動列出如下(下述編號對應樓面平面圖中的附註):

- (a) 原本的內牆拆除。
- (b) 新建內牆。
- (c) 原本的內牆拆除,並以不同尺寸的牆及不同的裝置取代。
- (d) 原本的內牆加設木製圍身。
- (e) 門移位或拆除,並以不同位置或不同設計之門取代。
- (f) 花洒頭移位。

請參考第31頁之實際建造平面圖。

* 發展項目58至59樓複式單位C平面圖上顯示為「平台」之描述,跟發展項目最新版本之批准的建築圖則上所描述的一致,惟每一個這樣的平台(整個或部分其上有蓋頂)實質上的真正用途為露台。因此,在符合《一手住宅物業銷售條例》(第621章)第8條及該條例附表1第1部第11(2)(b)條下,每一個這樣的平台之有蓋面積已分別地被計入為該複式單位的「實用面積」之部份。

** 發展項目58至59樓複式單位D平面圖上顯示為「平台」之描述,跟發展項目最新版本之批准的建築圖則上所描述的一致,惟每一個這樣的平台(其上有蓋頂)實質上的真正用途為露台。因此,在符合《一手住宅物業銷售條例》(第621章)第8條及該條例附表1第1部第11(2)(b)條下,每一個這樣的平台之有蓋面積已分別地被計入為該複式單位的「實用面積」之部份。

備註:平面圖所列之數字為以毫米標示之建築結構呎吋。

Abbreviation 縮寫

BATH 1 BATHROOM 1 浴室1	ELV. ELECTRICAL LOW VOLTAGE ROOM 低壓電錶房	LAV. LAVATORY 廁所
BATH 2 BATHROOM 2 浴室2	EXHAUST A.D. EXHAUST AIR DUCT 排氣槽	LIV./DIN. RM. LIVING/DINING ROOM 客/飯廳
BATH 3 BATHROOM 3 浴室3	H.R. HOSE REEL 消防喉轆	M.B.R. MASTER BEDROOM 主人房
B.R. 1 BEDROOM 1 睡房1	KIT. KITCHEN 廚房	SATELLITE T.V. DUCT SATELLITE TELEVISION DUCT 衛星電視及設備機槽
B.R. 2 BEDROOM 2 睡房2	L1 LIFT 1 升降機1	STORE STORE ROOM 士多房
B.R. 3 BEDROOM 3 睡房3	L2 LIFT 2 升降機2	STORE 1 STORE ROOM 1 士多房1
B.W. BAY WINDOW 窗台	L3 LIFT 3 升降機3	STORE 2 STORE ROOM 2 士多房2
DN DOWN 落	L4 LIFT 4 升降機4	SUPPLY A.D. SUPPLY AIR DUCT 供氣槽



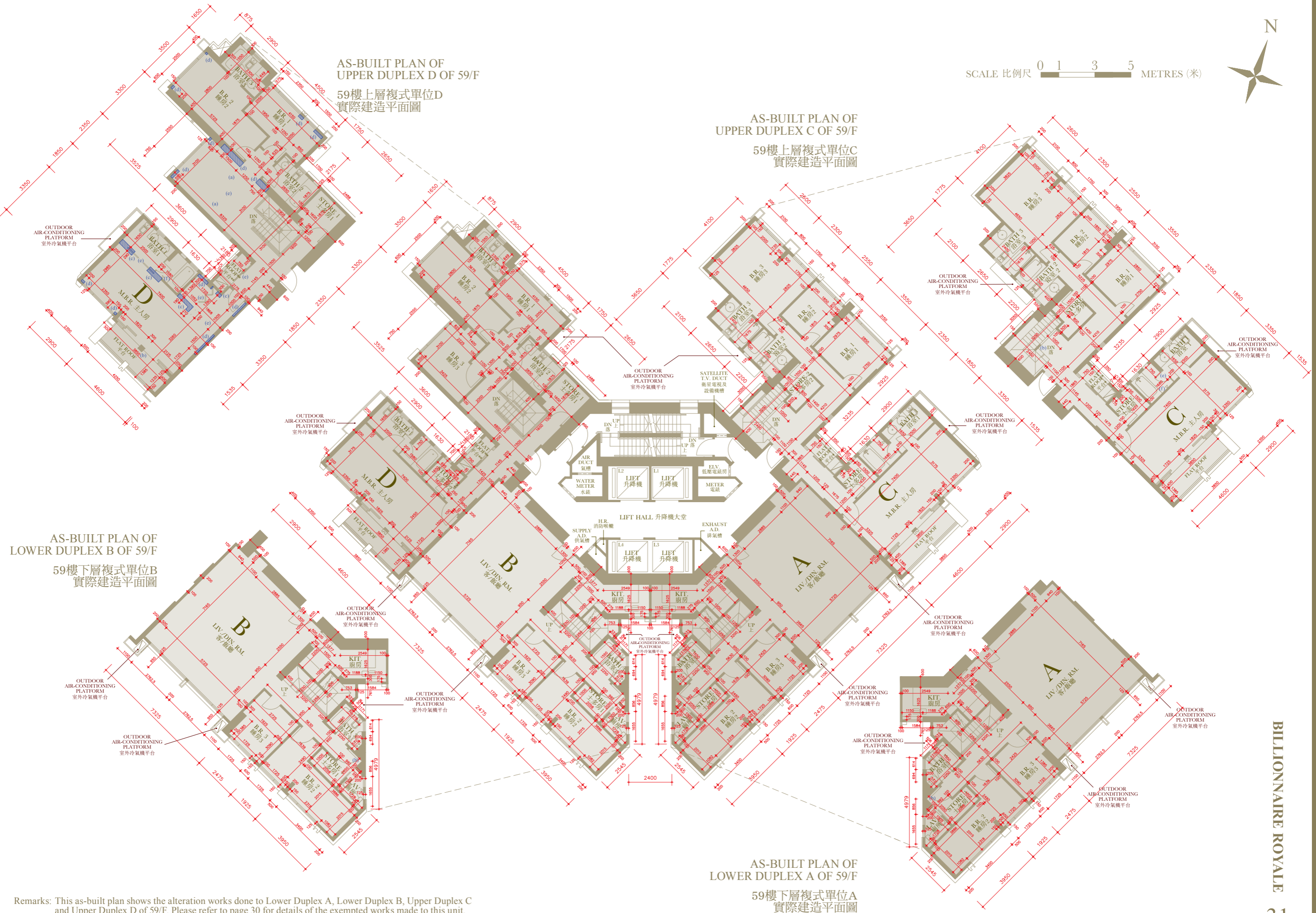
SCALE 比例尺 0 1 3 5 METRES (米)

AS-BUILT PLAN OF UPPER DUPLEX D OF 59/F

59樓上層複式單位D
實際建造平面圖

AS-BUILT PLAN OF UPPER DUPLEX C OF 59/F

59樓上層複式單位C
實際建造平面圖



Remarks: This as-built plan shows the alteration works done to Lower Duplex A, Lower Duplex B, Upper Duplex C and Upper Duplex D of 59/F. Please refer to page 30 for details of the exempted works made to this unit.
 備註：本59樓下層複式單位A、下層複式單位B、上層複式單位C及上層複式單位D實際建造平面圖顯示其已改動工程。有關本單位獲豁免的工程改動之詳情，請參考第30頁。

FLOOR PLANS OF RESIDENTIAL PROPERTIES IN THE DEVELOPMENT

發展項目的住宅物業的樓面平面圖

60/F FLOOR PLAN

60樓樓面平面圖

The thickness of the floor slabs (excluding plaster) of each residential property on 60/F: 125mm, 150mm, 175mm and 230mm.

The floor-to-floor height of each residential property on 60/F: 3.25m.

The internal areas of the residential properties on the upper floors will generally be slightly larger than those on the lower floors because of the reducing thickness of the structural walls on the upper floor.

Alterations to Upper Duplex A, Upper Duplex B, Flat C and Flat D on 60/F have been made by way of minor works or exempted works under the Buildings Ordinance (Cap.123) after completion of the Development. The approximate locations of the alterations are indicated in the floor plan and the alterations are set out below (with the numbering below corresponding to the remarks in the floor plan):

- (a) Shower head relocated
- (b) Door relocated or removed, replaced by a door at a different location or different design.
- (c) Windows replaced by different design.

Please refer to the as-built plan on page 33.

Remarks: The dimensions in floor plans are all structural dimensions in millimetre.

60樓住宅物業的樓板(不包括灰泥)的厚度:125毫米、150毫米、175毫米及230毫米。

60樓住宅物業的層與層之間的高度:3.25米。

因住宅物業的較高樓層的結構牆的厚度遞減,較高樓層的內部面積,一般比較低樓層的內部面積稍大。

60樓上層複式單位A、上層複式單位B、C室及D室在發展項目落成後因進行小型工程或獲<<建築物條例>>(第123章)豁免的工程而有所改動。該等改動之大概位置於樓面平面圖標示,及該等改動列出如下(下述編號對應樓面平面圖中的附註):

- (a) 花洒頭移位。
- (b) 門移位或拆除,並以不同位置或不同設計之門取代。
- (c) 窗戶以不同設計代替。

請參考第33頁之實際建造平面圖。

備註:平面圖所列之數字為以毫米標示之建築結構呎吋。

Abbreviation 縮寫

BATH 1 BATHROOM 1 浴室1

BATH 2 BATHROOM 2 浴室2

B.R. 1 BEDROOM 1 睡房1

B.R. 2 BEDROOM 2 睡房2

B.R. 3 BEDROOM 3 睡房3

B.W. BAY WINDOW 窗台

DN DOWN 落

ELV. ELECTRICAL LOW VOLTAGE ROOM 低壓電錶房

EXHAUST A.D. EXHAUST AIR DUCT 排氣槽

H.R. HOSE REEL 消防喉轆

KIT. KITCHEN 廚房

L1 LIFT 1 升降機1

L2 LIFT 2 升降機2

L3 LIFT 3 升降機3

L4 LIFT 4 升降機4

LAV. LAVATORY 廁所

LIV./DIN. RM. LIVING/DINING ROOM 客/飯廳

M.B.R. MASTER BEDROOM 主人房

SATELLITE T.V. DUCT SATELLITE TELEVISION DUCT 衛星電視及設備機槽

STORE 1/STORE RM. 1 STORE ROOM1 士多房1

STORE 2 STORE ROOM2 士多房2

SUPPLY A.D. SUPPLY AIR DUCT 供氣槽

UTI. UTILITY PLATFORM 工作平台

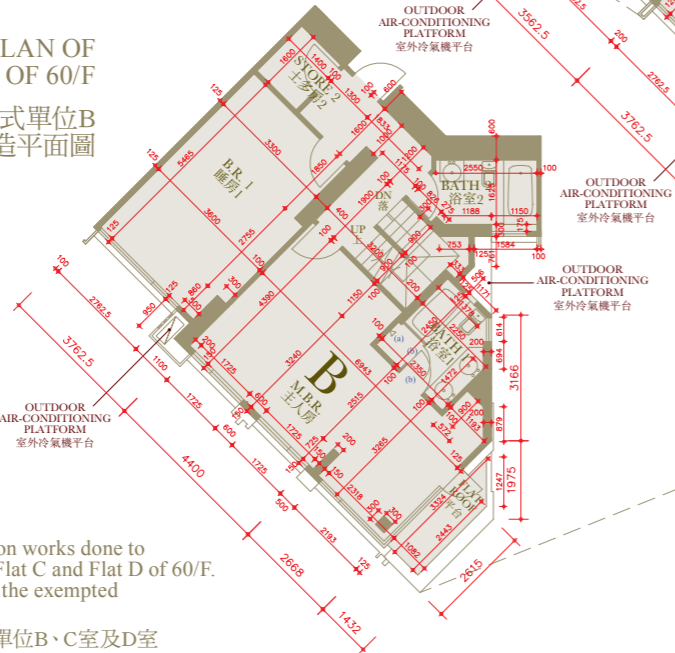


AS-BUILT PLAN OF
FLAT D OF 60/F
60樓D室實際建造平面圖

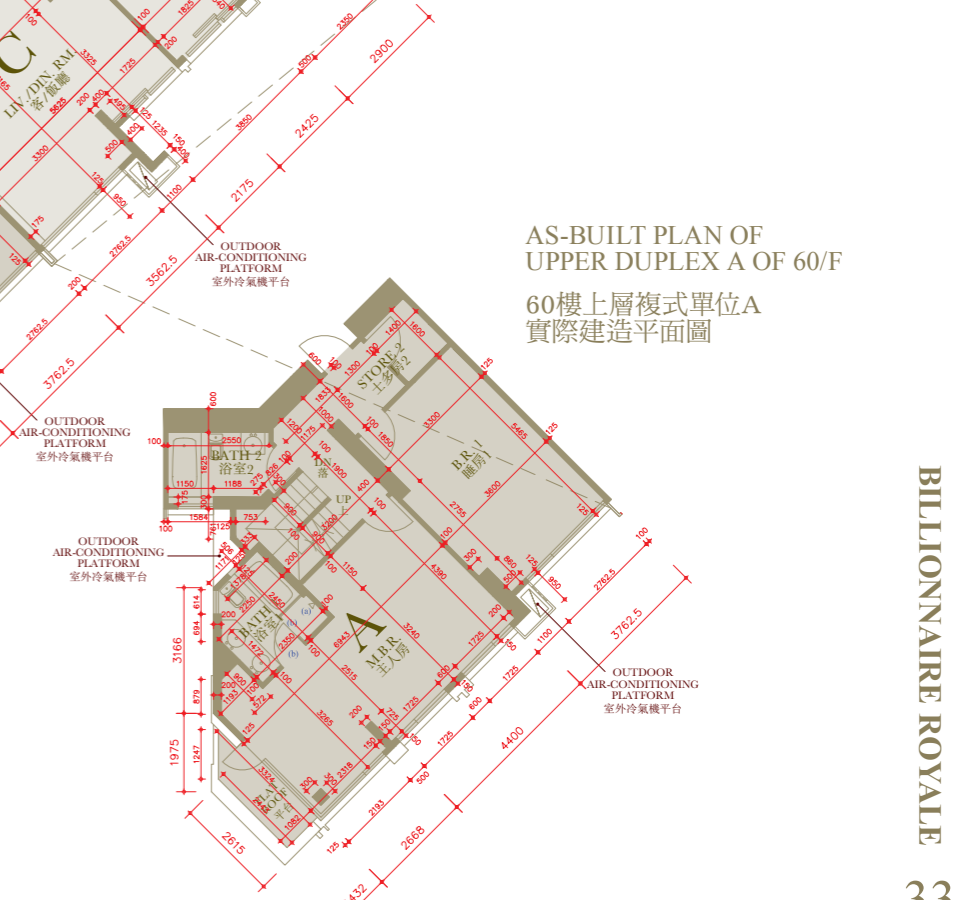
AS-BUILT PLAN OF
FLAT C OF 60/F
60樓C室實際建造平面圖



AS-BUILT PLAN OF
UPPER DUPLEX B OF 60/F
60樓上層複式單位B
實際建造平面圖



AS-BUILT PLAN OF
UPPER DUPLEX A OF 60/F
60樓上層複式單位A
實際建造平面圖



Remarks: This as-built plan shows the alteration works done to Upper Duplex A, Upper Duplex B, Flat C and Flat D of 60/F. Please refer to page 32 for details of the exempted works made to this unit.

備註：本60樓上層複式單位A、上層複式單位B、C室及D室實際建造平面圖顯示其已改動工程。有關本單位獲豁免的工程改動之詳情，請參考第32頁。

SCALE 比例尺 0 1 3 5 METRES (米)



FLOOR PLANS OF RESIDENTIAL PROPERTIES IN THE DEVELOPMENT

發展項目的住宅物業的樓面平面圖

ROOF FLOOR PLAN

天台樓面平面圖

The thickness of the floor slabs (excluding plaster) of each residential property on R/F: 125mm, 150mm and 175mm.
The floor-to-floor height of each residential property on R/F: Not applicable.

The internal areas of the residential properties on the upper floors will generally be slightly larger than those on the lower floors because of the reducing thickness of the structural walls on the upper floors.

* The description of "Flat Roofs" as shown on the Roof Floor Plan(s) of Duplex A of 59/F to 60/F, Duplex B of 59/F to 60/F, Flat C of 60/F and Flat D of 60/F of the Development corresponds to the description in the latest Approved Building Plans of the Development but each of such Flat Roofs is described as Roof in the Area Schedule.

Remarks: The dimensions in floor plans are all structural dimensions in millimetre.

天台住宅物業的樓板（不包括灰泥）的厚度：125毫米、150毫米及175毫米。
天台住宅物業的層與層之間的高度：不適用。

因住宅物業的較高樓層的結構牆的厚度遞減，較高樓層的內部面積，一般比較低樓層的內部面積稍大。

* 發展項目59至60樓複式單位A、59至60樓複式單位B、60樓C室及60樓D室的天台樓面平面圖上顯示為「平台」之描述，跟發展項目最新版本之批准的建築圖則上所描述的一致，惟每一個這樣的平台在面積表內被描述為天台。

備註：平面圖所列之數字為以毫米標示之建築結構呎吋。

Abbreviation 縮寫

C.L.	CAT LADDER	爬梯
DN	DOWN	落
L1 LIFT SHAFT	LIFT 1 LIFT SHAFT	升降機1升降機井
L2 LIFT SHAFT	LIFT 2 LIFT SHAFT	升降機2升降機井
L3 LIFT SHAFT	LIFT 3 LIFT SHAFT	升降機3升降機井
L4 LIFT SHAFT	LIFT 4 LIFT SHAFT	升降機4升降機井
SATELLITE TV. & EQUIPMENT PLANT RM.	SATELLITE TELEVISION & EQUIPMENT PLANT ROOM	衛星電視及設備機房

