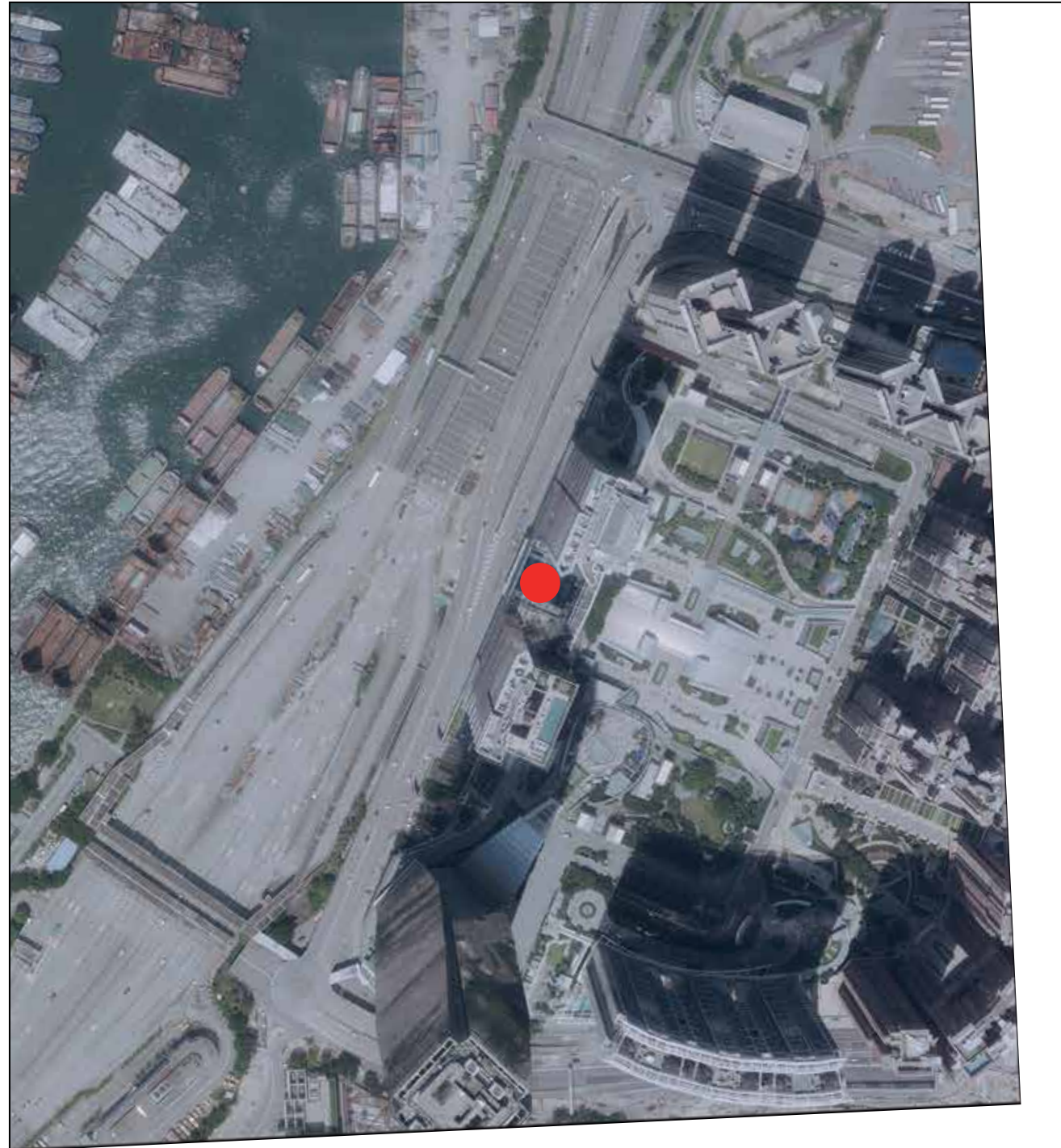


Aerial photograph of the Phase

期數的鳥瞰照片



This blank area falls outside the coverage of the relevant Aerial Photograph
鳥瞰照片並不覆蓋本空白範圍

● Location of the Phase
期數的所在位置

Adopted from part of the aerial photograph taken by the Survey and Mapping Office of Lands Department at a flying height of 6900' feet, photo No. E044877C, dated 11 Sep 2018.

摘錄自地政總署測繪處在6,900呎的飛行高度拍攝之鳥瞰照片，照片編號E044877C，飛行日期：2018年9月11日。

Survey and Mapping Office, Lands Department, The Government of HKSAR © Copyright reserved – reproduction by permission only.
香港特別行政區政府地政總署測繪處©版權所有，未經許可，不得複製。

Remarks :

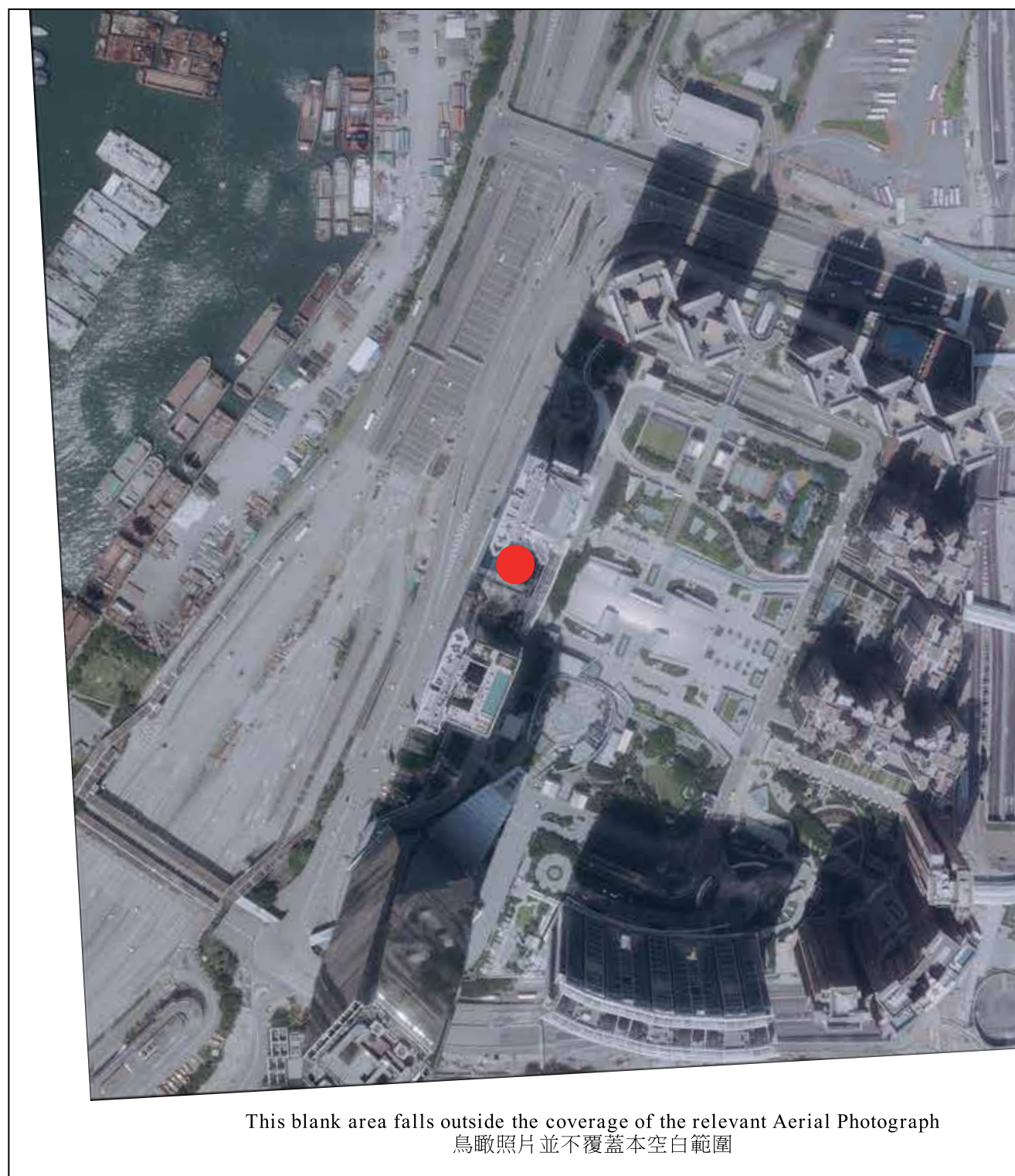
The aerial photograph may show more than the area required under the Residential Properties (First-hand Sales) Ordinance due to technical reason that the boundary of the Phase is irregular.

備註：

由於期數的邊界不規則的技術原因，此照片所顯示的範圍可能超過《一手住宅物業銷售條例》所規定的範圍。

Aerial photograph of the Phase

期數的鳥瞰照片



● Location of the Phase
期數的所在位置

Adopted from part of the aerial photograph taken by the Survey and Mapping Office of Lands Department at a flying height of 6900' feet, photo No. E044878C, dated 11 Sep 2018.

摘錄自地政總署測繪處在6,900呎的飛行高度拍攝之鳥瞰照片，照片編號E044878C，飛行日期：2018年9月11日。

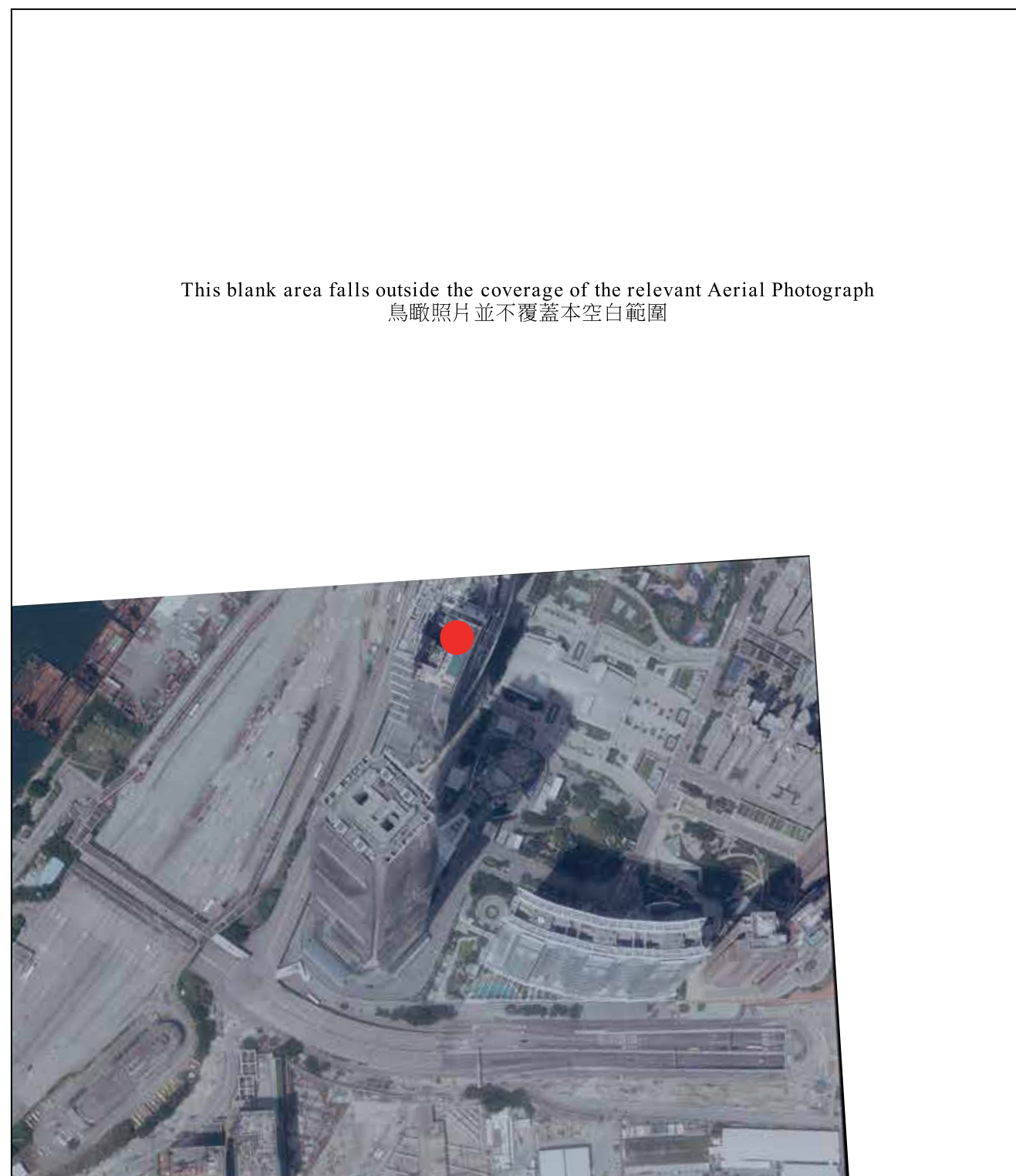
Survey and Mapping Office, Lands Department, The Government of HKSAR © Copyright reserved – reproduction by permission only.
香港特別行政區政府地政總署測繪處©版權所有，未經許可，不得複製。

Remarks :
The aerial photograph may show more than the area required under the Residential Properties (First-hand Sales) Ordinance due to technical reason that the boundary of the Phase is irregular.

備註：
由於期數的邊界不規則的技術原因，此照片所顯示的範圍可能超過《一手住宅物業銷售條例》所規定的範圍。

Aerial photograph of the Phase

期數的鳥瞰照片



● Location of the Phase
期數的所在位置

Adopted from part of the aerial photograph taken by the Survey and Mapping Office of Lands Department at a flying height of 6900' feet, photo No. E045090C, dated 11 Sep 2018.

摘錄自地政總署測繪處在6,900呎的飛行高度拍攝之鳥瞰照片，照片編號E045090C，飛行日期：2018年9月11日。

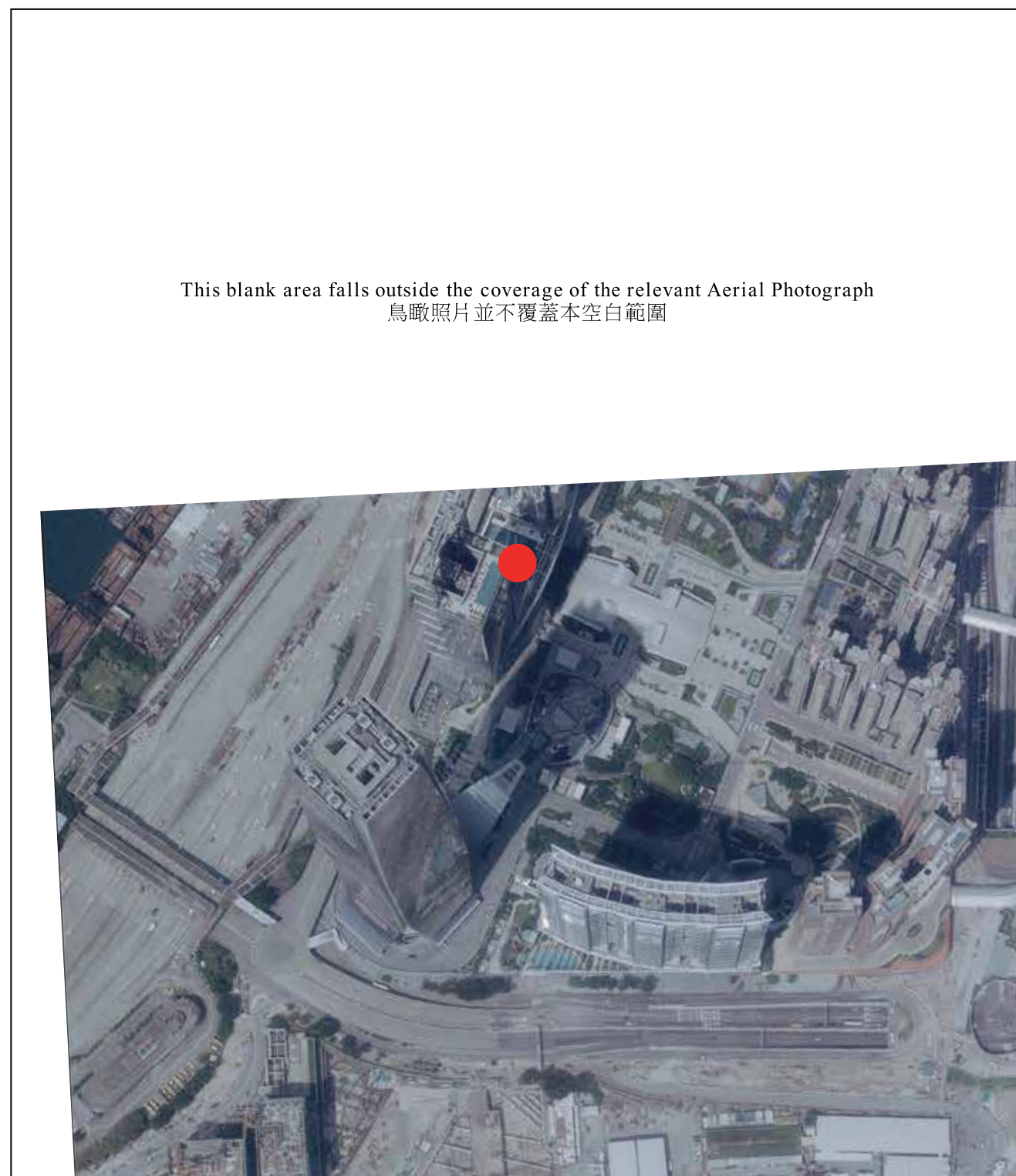
Survey and Mapping Office, Lands Department, The Government of HKSAR © Copyright reserved – reproduction by permission only.
香港特別行政區政府地政總署測繪處©版權所有，未經許可，不得複製。

Remarks :
The aerial photograph may show more than the area required under the Residential Properties (First-hand Sales) Ordinance due to technical reason that the boundary of the Phase is irregular.

備註：
由於期數的邊界不規則的技術原因，此照片所顯示的範圍可能超過《一手住宅物業銷售條例》所規定的範圍。

Aerial photograph of the Phase

期數的鳥瞰照片



This blank area falls outside the coverage of the relevant Aerial Photograph
鳥瞰照片並不覆蓋本空白範圍

● Location of the Phase
期數的所在位置

Adopted from part of the aerial photograph taken by the Survey and Mapping Office of Lands Department at a flying height of 6900' feet, photo No. E045091C, dated 11 Sep 2018.

摘錄自地政總署測繪處在6,900呎的飛行高度拍攝之鳥瞰照片，照片編號E045091C，飛行日期：2018年9月11日。

Survey and Mapping Office, Lands Department, The Government of HKSAR © Copyright reserved – reproduction by permission only.
香港特別行政區政府地政總署測繪處©版權所有，未經許可，不得複製。

Remarks :
The aerial photograph may show more than the area required under the Residential Properties (First-hand Sales) Ordinance due to technical reason that the boundary of the Phase is irregular.

備註：
由於期數的邊界不規則的技術原因，此照片所顯示的範圍可能超過《一手住宅物業銷售條例》所規定的範圍。