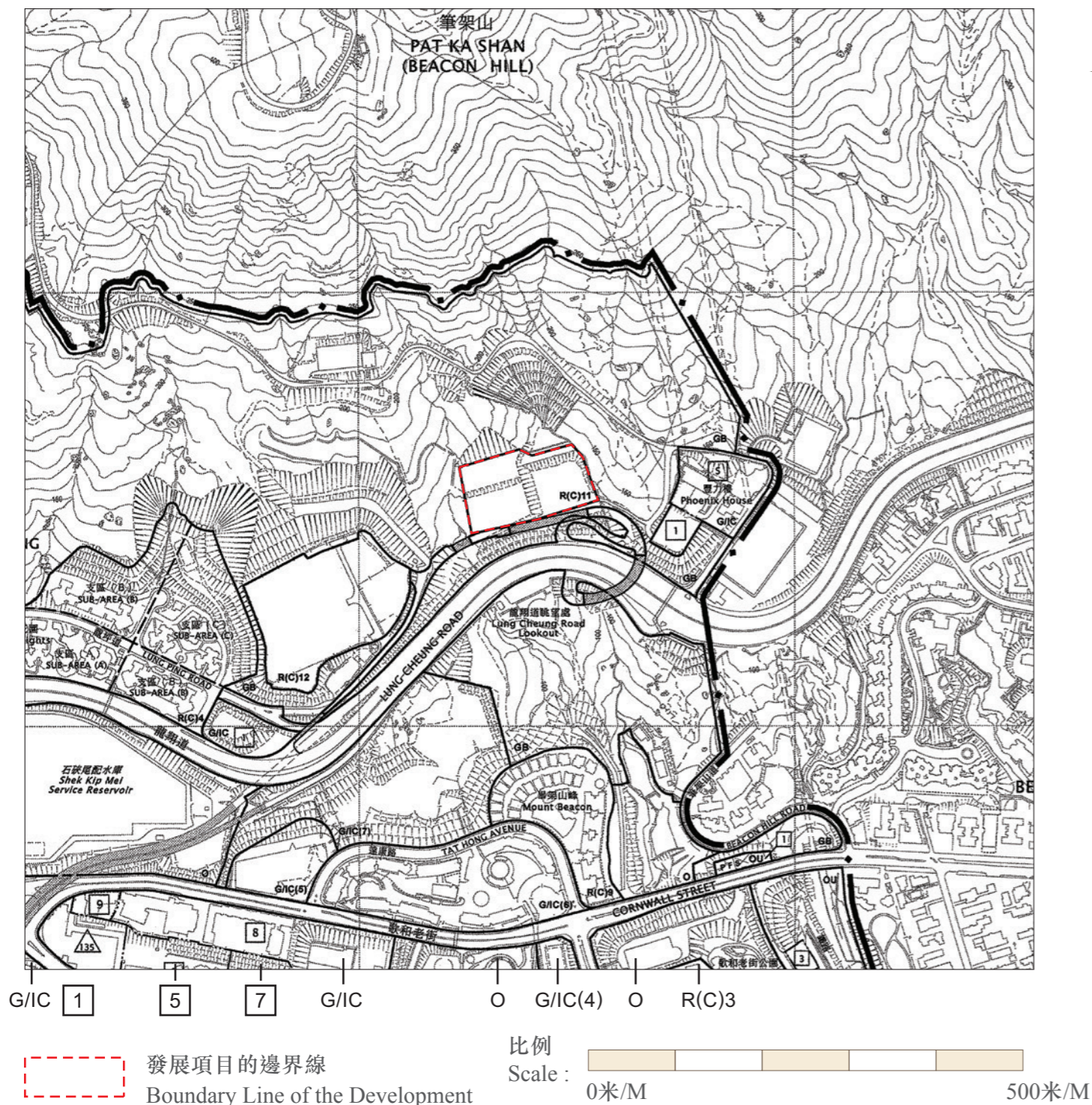


9 關於發展項目的分區計劃大綱圖 OUTLINE ZONING PLAN RELATING TO THE DEVELOPMENT



圖例 Notation

地帶 Zones

- R(C) 住宅 (丙類) Residential (Group C)
- G/I/C 政府、機構或社區 Government, Institution or Community
- O 休憩用地 Open Space
- OU 其他指定用途 Other Specified Uses
- GB 綠化地帶 Green Belt

交通 Communications

- 主要道路及路口 Major Road and Junction
- 高架道路 Elevated Road

其他 Miscellaneous

- 規劃範圍界線 Boundary of Planning Scheme
- 建築物高度管制區界線 Building Height Control Zone Boundary
- 最高建築物高度 (在主水平基準上若干米)
Maximum Building Height (in metres above Principal Datum)
- 最高建築物高度 (樓層數目)
Maximum Building Height (in number of storeys)
- P F S** 加油站 Petrol Filling Station

備註:

1. 上述分區計劃大綱圖可於開放時間向售樓處免費查閱。
2. 賣方亦建議買方到該發展地盤作實地考察，以獲取對該發展地盤，以及周邊地區環境及附近的公共設施有較佳的了解。
3. 因技術原因(例如發展項目之形狀)，分區計劃大綱圖所顯示之範圍多於《一手住宅物業銷售條例》所要求顯示之範圍。

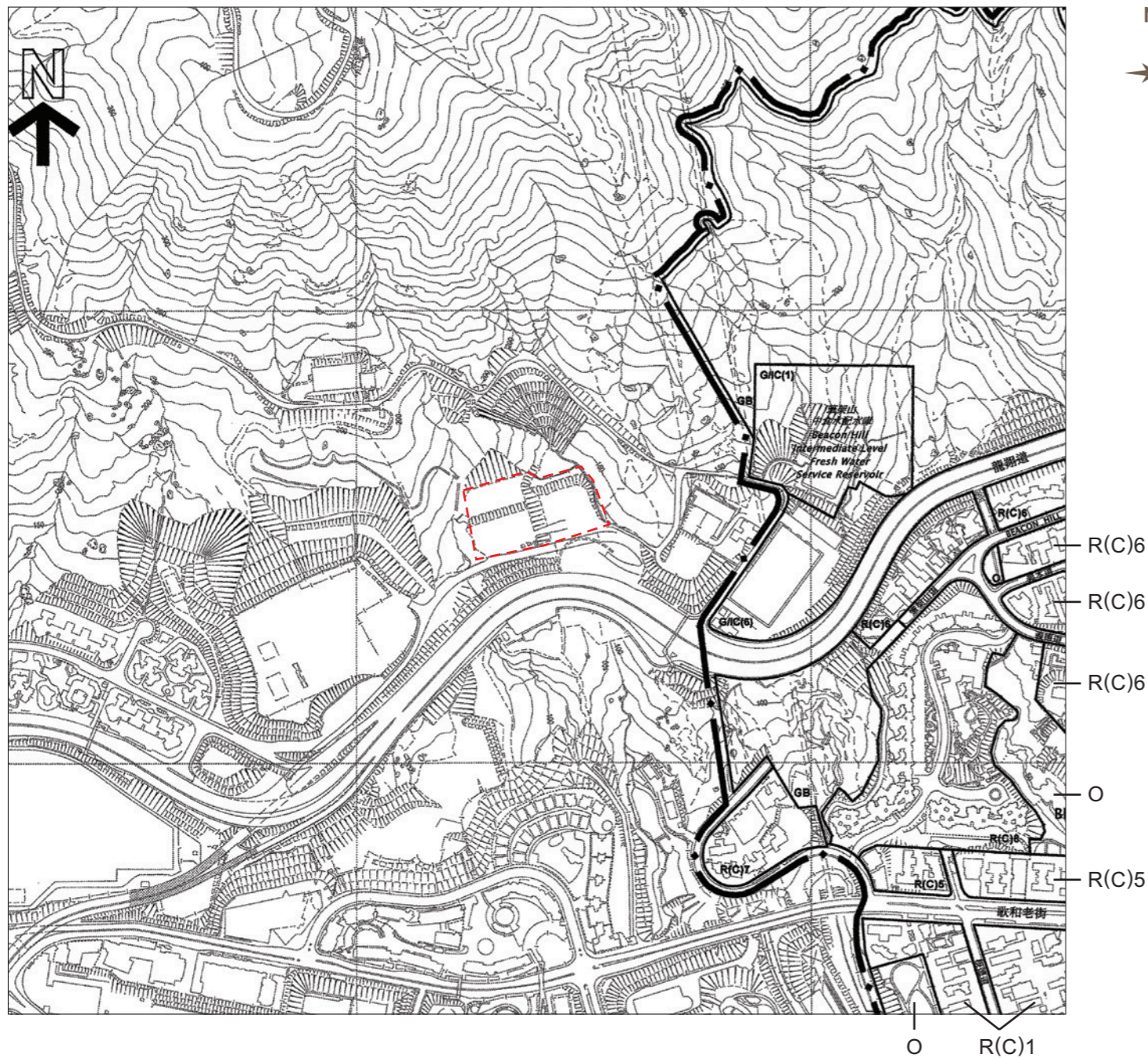
Notes:

1. The above outline zoning plan is available for free inspection at the sales office(s) during opening hours.
2. The Vendor also advises purchasers to conduct on-site visit for a better understanding of the Development site, its surrounding environment and the public facilities nearby.
3. Due to technical reasons (such as the shape of the Development), the outline zoning plan has shown area more than that required under the Residential Properties (First-hand Sales) Ordinance.

摘錄自2015年7月24日刊憲之石硤尾分區計劃大綱核准圖 (圖則編號S/K4/29)。
Extract from the approved Shek Kip Mei Outline Zoning Plan (Plan no. S/K4/29), gazetted on 24 July 2015.

地圖為規劃署遵照城市規劃委員會指示擬備，版權屬香港特別行政區政府，經地政總署准許複印。
The plan, prepared by the Planning Department under the direction of the Town Planning Board, is produced with the permission of the Director of Lands. © The Government of Hong Kong SAR.

9 關於發展項目的分區計劃大綱圖 OUTLINE ZONING PLAN RELATING TO THE DEVELOPMENT



圖例 Notation

地帶 Zones

- R(C) 住宅 (丙類) Residential (Group C)
- G/IC 政府、機構或社區 Government, Institution or Community
- O 休憩用地 Open Space
- GB 綠化地帶 Green Belt

交通 Communications

- 主要道路及路口 Major Road and Junction
- 高架道路 Elevated Road

其他 Miscellaneous

- 規劃範圍界線 Boundary of Planning Scheme

R(C)6
R(C)6
R(C)6
O
R(C)5



備註:

1. 上述分區計劃大綱圖可於開放時間向售樓處免費查閱。
2. 賣方亦建議買方到該發展地盤作實地考察，以獲取對該發展地盤，以及周邊地區環境及附近的公共設施有較佳的了解。
3. 因技術原因(例如發展項目之形狀)，分區計劃大綱圖所顯示之範圍多於《一手住宅物業銷售條例》所要求顯示之範圍。

Notes:

1. The above outline zoning plan is available for free inspection at the sales office(s) during opening hours.
2. The Vendor also advises purchasers to conduct on-site visit for a better understanding of the Development site, its surrounding environment and the public facilities nearby.
3. Due to technical reasons (such as the shape of the Development), the outline zoning plan has shown area more than that required under the Residential Properties (First-hand Sales) Ordinance.

摘錄自2017年12月15日刊憲之九龍塘分區計劃大綱核准圖(圖則編號S/K18/21)。
Extract from the approved Kowloon Tong Outline Zoning Plan (Plan no. S/K18/21), gazetted on 15 December 2017.

地圖為規劃署遵照城市規劃委員會指示擬備，版權屬香港特別行政區政府，經地政總署准許複印。
The plan, prepared by the Planning Department under the direction of the Town Planning Board, is produced with the permission of the Director of Lands. © The Government of Hong Kong SAR.