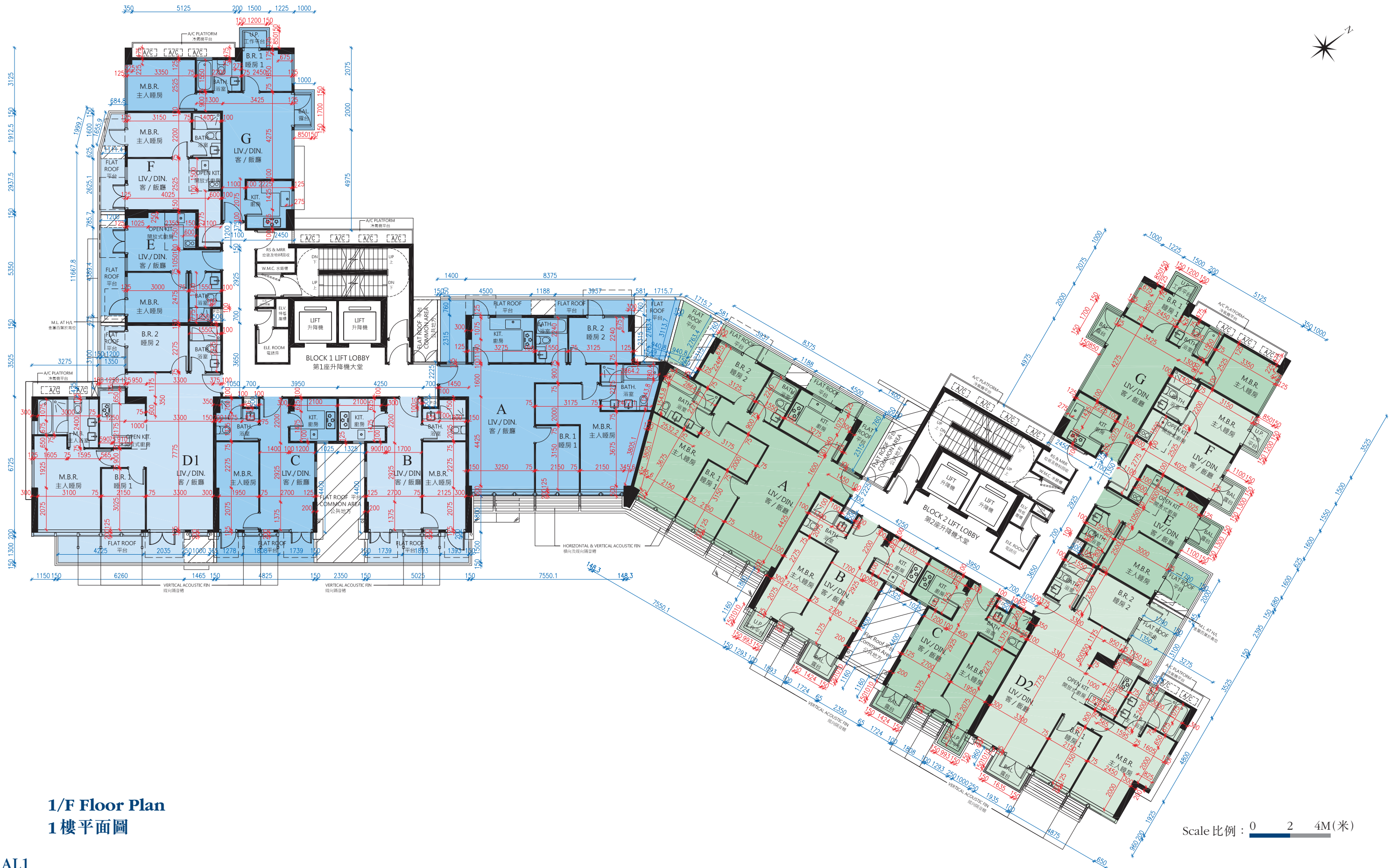


FLOOR PLANS OF RESIDENTIAL PROPERTIES IN THE DEVELOPMENT

發展項目的住宅物業的樓面平面圖



1/F Floor Plan
1樓平面圖

FLOOR PLANS OF RESIDENTIAL PROPERTIES IN THE DEVELOPMENT

發展項目的住宅物業的樓面平面圖

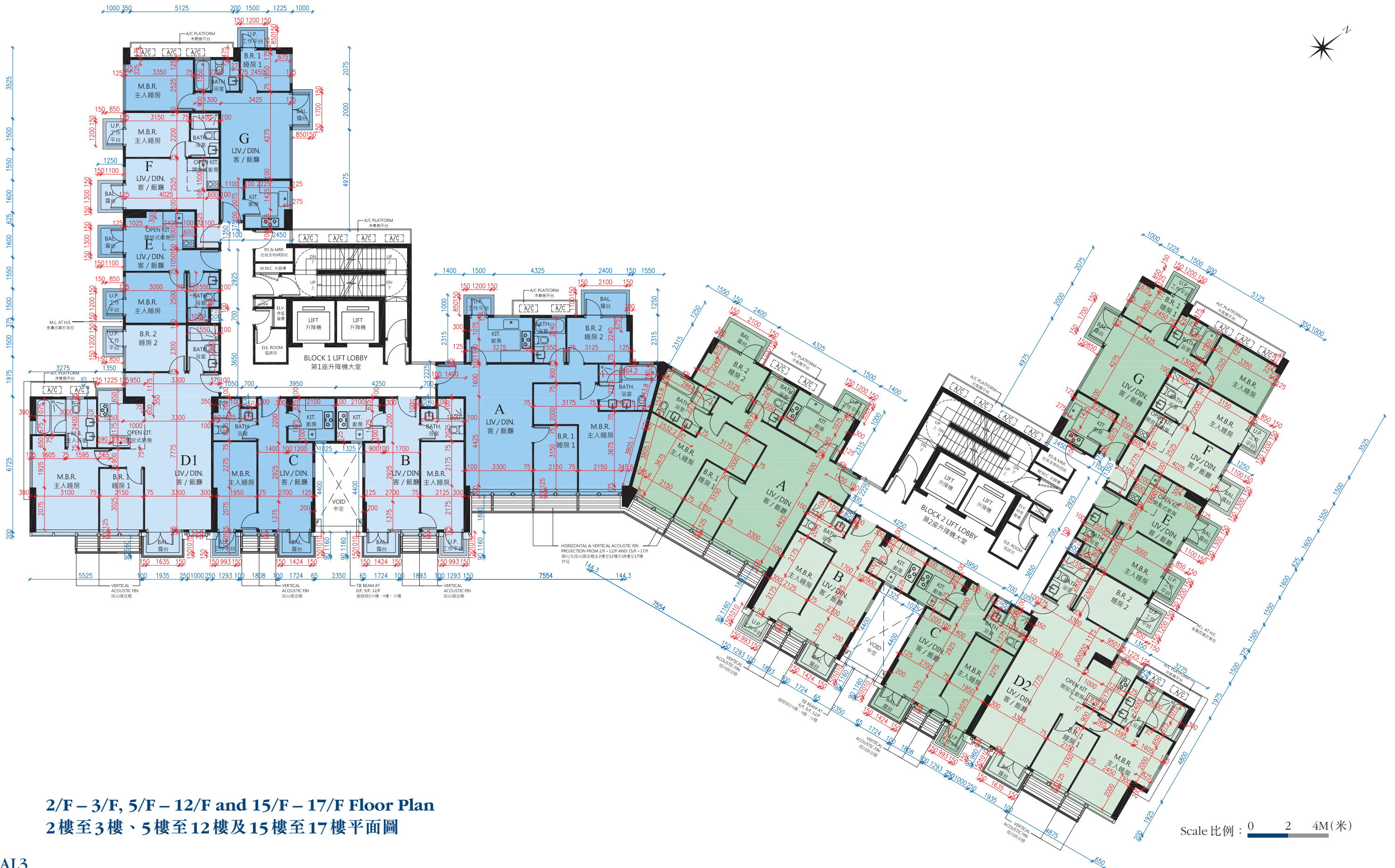
Block 座數	Block 1 第1座							Block 2 第2座						
Floor 樓層	1/F 1樓							1/F 1樓						
Flat 單位	A	B	C	D1	E	F	G	A	B	C	D2	E	F	G
The thickness of the floor slabs (excluding plaster) of each residential property (mm) 每個住宅物業的樓板(不包括灰泥)的厚度(毫米)	125 & 150	125	125	125, 150 & 200	125 & 150	125 & 150	125 & 150	125 & 150	125	125	125 & 150	125 & 150	125 & 150	125 & 150
The floor-to-floor height (refers to the height between the top surface of the structural slab of a floor and the top surface of the structural slab of its immediate upper floor) of each residential property (mm) 每個住宅物業的層與層之間的高度(指該樓層之石屎地台面與上一層石屎地台面之高度距離)(毫米)	3100 & 3150	3100 & 3150	3100 & 3150	2850 & 3150	2850, 3100 & 3150	2675, 2700, 2950 & 3150	3100 & 3150	3100 & 3150	3100 & 3150	3150	2850 & 3150	2850, 3100 & 3150	2675, 2700, 2950 & 3150	3100 & 3150

1. The dimensions of the floor plans are all structural dimensions in millimeter.
2. The internal areas of the residential properties on the upper floors will generally be slightly larger than those on the lower floors because of the reducing thickness of structural walls on the upper floors.
3. Please refer to page AL9 of this sales brochure for legend of the terms and abbreviations shown in the floor plan above and the explanatory notes that are applicable thereto.

1. 樓面平面圖之尺規所列數字為以毫米標示之建築結構尺寸。
2. 因住宅物業的較高樓層的結構牆的厚度遞減，較高樓層的內部面積，一般比較低樓層的內部面積稍大。
3. 以上平面圖中顯示之名詞、簡稱及其適用的附註，請參閱本售樓說明書第AL9頁。

FLOOR PLANS OF RESIDENTIAL PROPERTIES IN THE DEVELOPMENT

發展項目的住宅物業的樓面平面圖



2/F – 3/F, 5/F – 12/F and 15/F – 17/F Floor Plan
2樓至3樓、5樓至12樓及15樓至17樓平面圖

Scale 比例 : 0 2 4M(米)

FLOOR PLANS OF RESIDENTIAL PROPERTIES IN THE DEVELOPMENT

發展項目的住宅物業的樓面平面圖

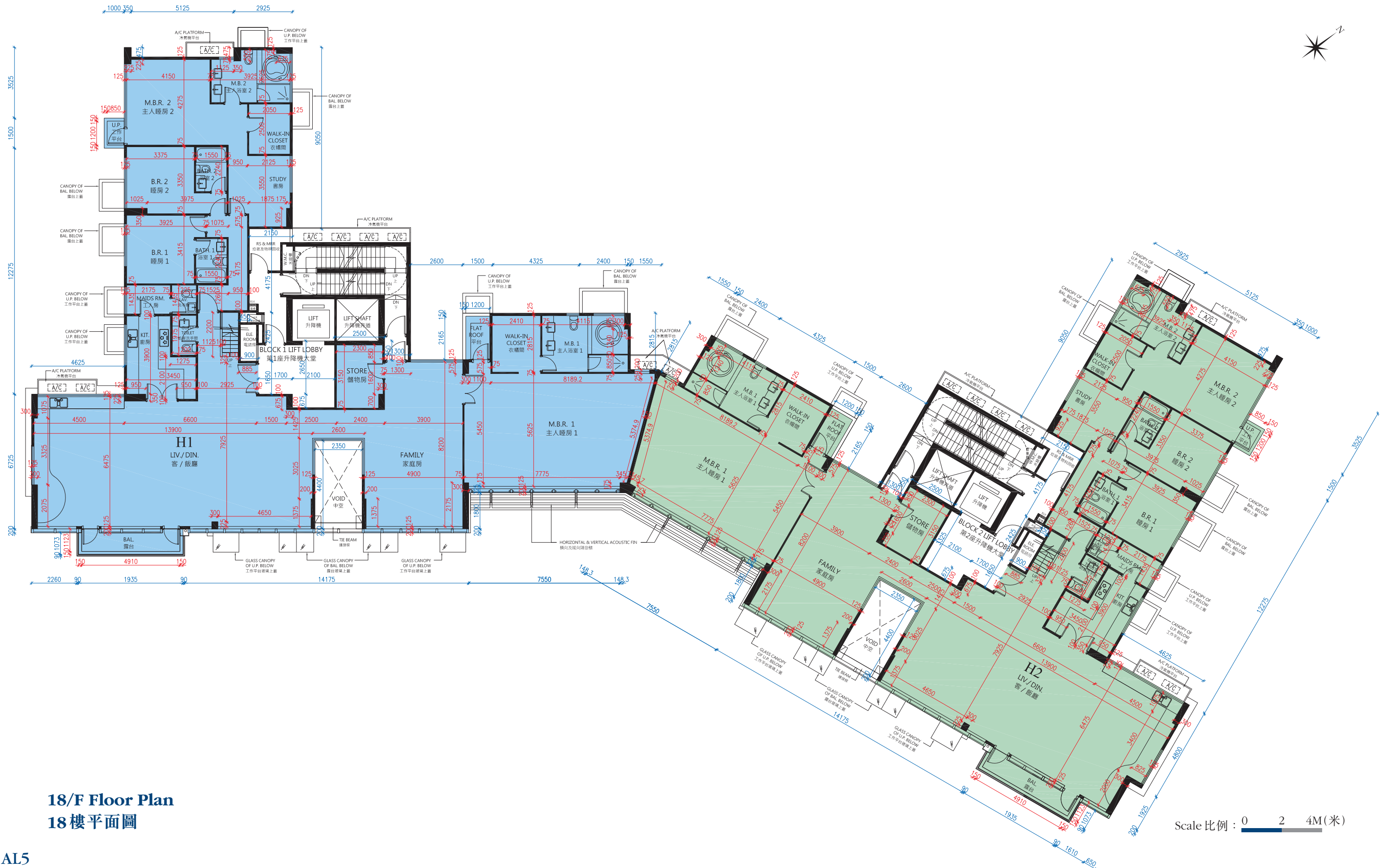
Block 座數	Block 1 第1座														Block 2 第2座													
Floor 樓層	2/F – 3/F, 5/F – 12/F and 15/F – 16/F 2樓至3樓、5樓至12樓及15樓至16樓							17/F 17樓							2/F – 3/F, 5/F – 12/F and 15/F – 16/F 2樓至3樓、5樓至12樓及15樓至16樓						17/F 17樓							
Flat 單位	A	B	C	D1	E	F	G	A	B	C	D1	E	F	G	A	B	C	D2	E	F	G	A	B	C	D2	E	F	G
The thickness of the floor slabs (excluding plaster) of each residential property (mm) 每個住宅物業的樓板(不包括灰泥)的厚度(毫米)	125 & 150	125	125	125 & 150	125 & 150	125 & 150	125 & 150	125 & 150	125	125	125 & 150	125 & 150	125 & 150	125 & 150	125 & 150	125	125	125 & 150	125 & 150	125 & 150	125 & 150	125 & 150	125	125	125 & 150	125 & 150	125 & 150	125 & 150
The floor-to-floor height (refers to the height between the top surface of the structural slab of a floor and the top surface of the structural slab of its immediate upper floor) of each residential property (mm) 每個住宅物業的層與層之間的高度(指該樓層之石屎地台面與上一層石屎地台面之高度距離)(毫米)	3150	3150	3150	3150	3150	3150	3150	2900, 2950 & 3150	3150	3150	2900 & 3150	2900 & 3150	2900 & 3150	2900 & 3150	3150	3150	3150	3150	3150	3150	3150	2900, 2950 & 3150	3150	3150	2900 & 3150	2900 & 3150	2900 & 3150	2900 & 3150

- The dimensions of the floor plans are all structural dimensions in millimeter.
- The internal areas of the residential properties on the upper floors will generally be slightly larger than those on the lower floors because of the reducing thickness of structural walls on the upper floors.
- Please refer to page AL9 of this sales brochure for legend of the terms and abbreviations shown in the floor plan above and the explanatory notes that are applicable thereto.

- 樓面平面圖之尺規所列數字為以毫米標示之建築結構尺寸。
- 因住宅物業的較高樓層的結構牆的厚度遞減，較高樓層的內部面積，一般比較低樓層的內部面積稍大。
- 以上平面圖中顯示之名詞、簡稱及其適用的附註，請參閱本售樓說明書第AL9頁。

FLOOR PLANS OF RESIDENTIAL PROPERTIES IN THE DEVELOPMENT

發展項目的住宅物業的樓面平面圖



18/F Floor Plan
18樓平面圖

Scale 比例: 0 2 4M(米)

FLOOR PLANS OF RESIDENTIAL PROPERTIES IN THE DEVELOPMENT

發展項目的住宅物業的樓面平面圖

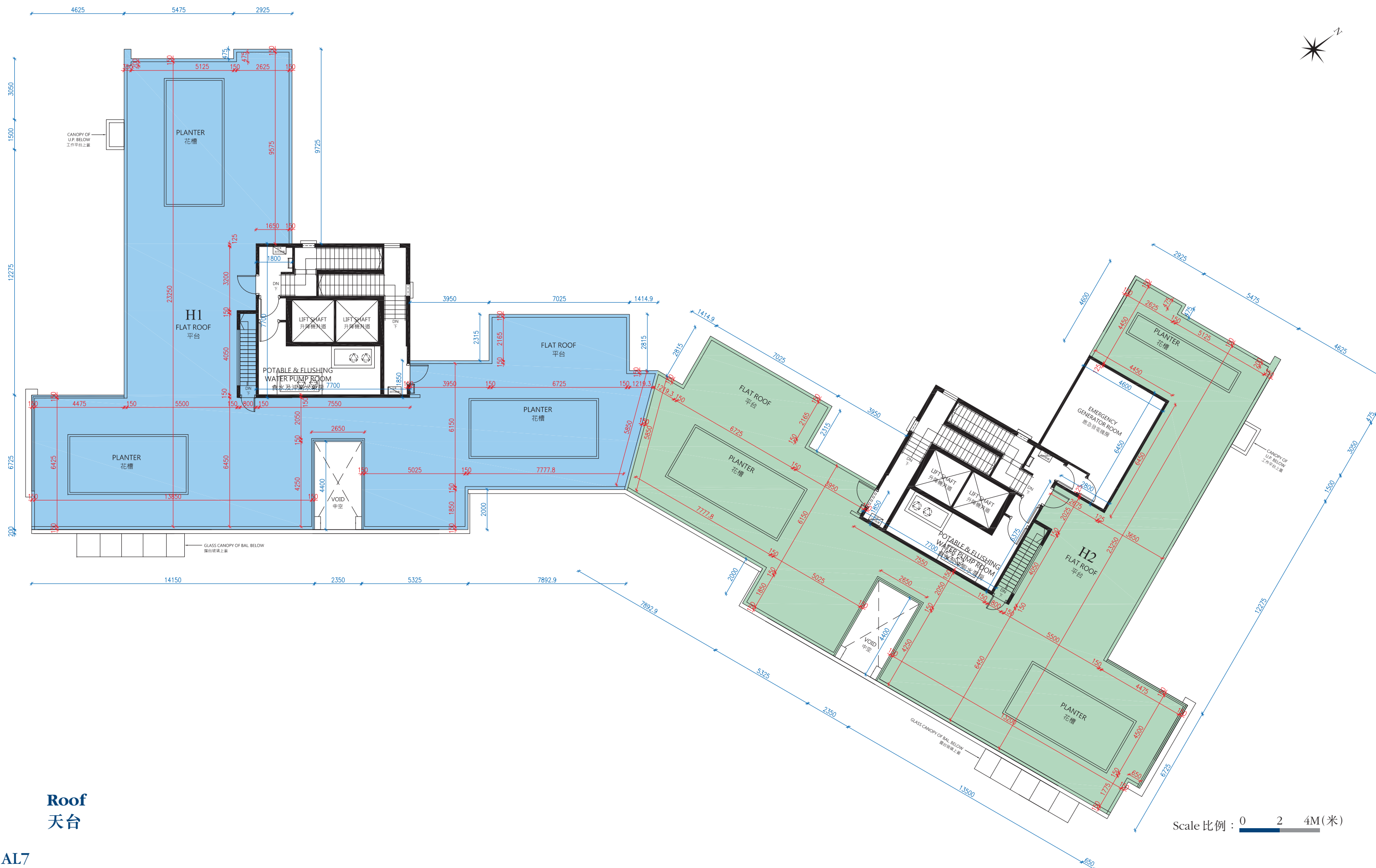
Block 座數	Block 1 第1座	Block 2 第2座
Floor 樓層	18/F 18樓	18/F 18樓
Flat 單位	H1	H2
The thickness of the floor slabs (excluding plaster) of each residential property (mm) 每個住宅物業的樓板(不包括灰泥)的厚度(毫米)	150, 200 & 300	150, 200 & 300
The floor-to-floor height (refers to the height between the top surface of the structural slab of a floor and the top surface of the structural slab of its immediate upper floor) of each residential property (mm) 每個住宅物業的層與層之間的高度(指該樓層之石屎地台面與上一層石屎地台面之高度距離)(毫米)	3500	3500

1. The dimensions of the floor plans are all structural dimensions in millimeter.
2. The internal areas of the residential properties on the upper floors will generally be slightly larger than those on the lower floors because of the reducing thickness of structural walls on the upper floors.
3. Please refer to page AL9 of this sales brochure for legend of the terms and abbreviations shown in the floor plan above and the explanatory notes that are applicable thereto.

1. 樓面平面圖之尺規所列數字為以毫米標示之建築結構尺寸。
2. 因住宅物業的較高樓層的結構牆的厚度遞減，較高樓層的內部面積，一般比較低樓層的內部面積稍大。
3. 以上平面圖中顯示之名詞、簡稱及其適用的附註，請參閱本售樓說明書第AL9頁。

FLOOR PLANS OF RESIDENTIAL PROPERTIES IN THE DEVELOPMENT

發展項目的住宅物業的樓面平面圖



Roof
天台

FLOOR PLANS OF RESIDENTIAL PROPERTIES IN THE DEVELOPMENT

發展項目的住宅物業的樓面平面圖

Block 座數	Block 1 第1座	Block 2 第2座
Floor 樓層	Roof 天台	Roof 天台
Flat 單位	H1	H2
The thickness of the floor slabs (excluding plaster) of each residential property (mm) 每個住宅物業的樓板(不包括灰泥)的厚度(毫米)	N/A 不適用	N/A 不適用
The floor-to-floor height (refers to the height between the top surface of the structural slab of a floor and the top surface of the structural slab of its immediate upper floor) of each residential property (mm) 每個住宅物業的層與層之間的高度(指該樓層之石屎地台面與上一層石屎地台面之高度距離)(毫米)	N/A 不適用	N/A 不適用

1. The dimensions of the floor plans are all structural dimensions in millimeter.
2. The internal areas of the residential properties on the upper floors will generally be slightly larger than those on the lower floors because of the reducing thickness of structural walls on the upper floors.
3. Please refer to page AL9 of this sales brochure for legend of the terms and abbreviations shown in the floor plan above and the explanatory notes that are applicable thereto.

1. 樓面平面圖之尺規所列數字為以毫米標示之建築結構尺寸。
2. 因住宅物業的較高樓層的結構牆的厚度遞減，較高樓層的內部面積，一般比較低樓層的內部面積稍大。
3. 以上平面圖中顯示之名詞、簡稱及其適用的附註，請參閱本售樓說明書第AL9頁。

FLOOR PLANS OF RESIDENTIAL PROPERTIES IN THE DEVELOPMENT

發展項目的住宅物業的樓面平面圖

Legend 圖例

A/C = Air-conditioner 冷氣機

A/C PLATFORM = Air-conditioner Platform 冷氣機平台

BATH. = Bathroom 浴室

BAL. = Balcony 露台

BLOCK 1 LIFT LOBBY = Block 1 lift lobby 第1座升降機大堂

BLOCK 2 LIFT LOBBY = Block 2 lift lobby 第2座升降機大堂

B.R. = Bedroom 睡房

CANOPY OF BAL. BELOW = Canopy of Balcony Below 露台上蓋

CANOPY OF U.P. BELOW = Canopy of Utility Platform Below 工作平台上蓋

COMMON AREA = common area 公共地方

DIN. = Dining Room 飯廳

DN = Down 下

ELE. Room = Electrical Room 電錶房

ELV. = Extra-low Voltage Duct 特低壓電力槽

EMERGENCY GENERATOR ROOM = emergency generator room 應急發電機房

FLAT ROOF = flat roof 平台

FAMILY = Family Room 家庭房

GLASS CANOPY OF BAL. BELOW = Glass Canopy of Balcony Below 露台玻璃上蓋

GLASS CANOPY OF U.P. BELOW = Glass Canopy of Utility Platform Below 工作平台玻璃上蓋

GUEST TOI. = Guest Toilet 訪客洗手間

H.R. = Hose Reel 消防喉轆

HORIZONTAL & VERTICAL ACOUSTIC FIN = horizontal & vertical acoustic fin 橫向及縱向隔音簷

LAV. = Lavatory 洗手間

LIFT = lift 升降機

LIFT SHAFT = lift shaft 升降機井道

LIV. = Living Room 客廳

KIT. = Kitchen 廚房

M.B. = Master Bathroom 主人浴室

M.B.R. = Master Bedroom 主人睡房

MAID RM. = Maid Room 工人房

OPEN KIT. = open kitchen 開放式廚房

P.D. = Pipe Duct 管道槽

PLANTER = planter 花槽

POTABLE & FLUSHING WATER PUMP ROOM = potable & flushing water pump room 食水及沖廁水泵房

RS & MRR = Refuse Storage and Material Recovery Room 垃圾及物料回收房

STORE = Store Room 儲物室

STUDY = Study Room 書房

UP = up 上

U.P. = Utility Platform 工作平台

VERTICAL ACOUSTIC FIN = vertical acoustic fin 縱向隔音簷

VOID = void 中空

WALK-IN CLOSET = walk-in closet 衣帽間

W.M.C. = Water Meter Cabinet 水錶櫃

Notes:

1. Symbols of fittings and fitments shown on the floor plans, such as bathtubs, sink, water closets, shower, sink counter, etc, are architectural symbols retrieved from the latest approved general building plans and for general indication only.
2. There may be architectural features and exposed pipes on external walls of some of the floors.
3. Common pipes exposed and/or enclosed in cladding are located at / adjacent to balcony and/or flat roof and/or utility platform and/or air-conditioning platform and/or external wall of some residential units.
4. There are ceiling bulkheads and/or sunken slabs at living rooms, dining rooms, bedrooms, corridors, bathrooms, store rooms, study rooms, lavatories, maid rooms and/or kitchens of some residential units for the air-conditioning system and/or mechanical and electrical services. There are exposed pipes / ductings for air-conditioning system and/or mechanical and electrical services within some store rooms.
5. The internal ceiling height within some units may vary due to structural, architectural and/or decoration design variations.
6. Balconies and utility platforms are non-enclosed areas.

備註：

1. 樓面平面圖上所顯示的形象裝置符號，例如浴缸、洗滌盆、坐廁、花灑、洗滌盆櫃等乃摘自最新的經批准的建築圖則，只作一般性標誌。
2. 部份樓層外牆或設有建築裝飾及外露喉管道。
3. 部份住宅單位的露台及/或平台及/或工作平台及/或冷氣機平台及/或外牆設有外露及/或外牆裝飾板內藏之公用喉管。
4. 部份住宅單位之客廳、飯廳、睡房、走廊、浴室、儲物室、書房、洗手間、工人房及/或廚房設有假天花有跌級樓板及/或上層跌級樓板，內裝置冷氣喉管及/或其他機電設備。部份儲物室內設有冷氣及/或機電設備之外露喉管/管道。
5. 部份單位之天花高度將會因應上層單位之結構、建築設計及/或裝修設計上的需要而有差異。
6. 露台及工作平台為不可封閉的地方。